

**NEKO**  
THINK DESIGN

NEKO LIGHTING AG



**ABOUT  
NEKO**



# Sven Speissegger



Founder of NEKO

*"I believe everyone should have the chance to enjoy beautiful, well-designed lighting at a fair and affordable price."*

**NEKO**  
THINK DESIGN

Founded in **2013** by Mr. Sven Speissegger, NEKO set out with a clear vision: to deliver high-quality, efficient LED lighting solutions with an exceptional price-to-performance ratio. Under Mr. Speissegger's leadership, NEKO has rapidly evolved into a thriving international lighting company, now serving customers in **over 120 countries** with innovative architectural solutions for both indoor and outdoor applications. Over the past decade, NEKO has grown into a global team of **more than 450 members**, with its own production facility in Asia and dedicated Design, Sales, and Marketing departments in Europe. Mr. Speissegger's commitment to innovation and quality continues to drive NEKO's success and industry leadership.

## PHILOSOPHY



At NEKO Lighting, 'THINK DESIGN' embodies our commitment to combining European aesthetics with the efficiency of Asian craftsmanship.



---

THINK  
DESIGN

# COMMITMENT



## ECONOMY

Energy efficiency  
High-performance LEDs  
CO2 reduction  
Long operating life product

## ENVIRONMENT

Recyclable packaging  
Pollutant-free LEDs  
Light emission control  
PEP eco passport

## PEOPLE

ISO 9001  
ISO 14001  
ISO 45001

NEKO'S

# SUSTAINABILITY PILLARS

# MILESTONES

**2013**

## Foundation

Established NEKO brand, R&D headquarters, and sales center in Zurich, Switzerland.  
Opened manufacturing center in Shenzhen.

Debuted at Light+Building Exhibition in Frankfurt.

## Market Debut

**2014**

Established Beijing, Shanghai, and Shenzhen sales centers.

## Regional Growth

**2017**

## Marketing Expansion

Launched Germany Marketing Center.

**2016**

## Global Expansion

Established the Germany branch.

**2018**

## Continued Growth

Established the France branch.

**2020**

**2024**

## Recognition

Won the US IDEA Design Award and Red Dot "Best of Best" Award.

**2019**

## Industrial Upgrade & Recognition

Completed the 35,000m<sup>2</sup> Huizhou Industrial Park, upgrading production capacity and contributing to the "Museum Lighting Design Specifications" standard.

**2021**

## Expansion, Recognition & Quality Standards

Achieved ISO9001, ISO14001, and ISO45001 certifications. Won Red Dot Award and established an assembly factory in Malaysia.

**2022**

## Recognition

Recognized as an "Enterprise Standard Leader."

**2023**

## Recognition

Contributed to China's GB/T31831 LED technical standard. Won iF Design Award and GOOD DESIGN Award.

**2025**

## Industrial Upgrade

Establishes a new 48,000m<sup>2</sup> modern industrial park.

# NEKO GLOBAL OFFICES



Shenzhen R&D center

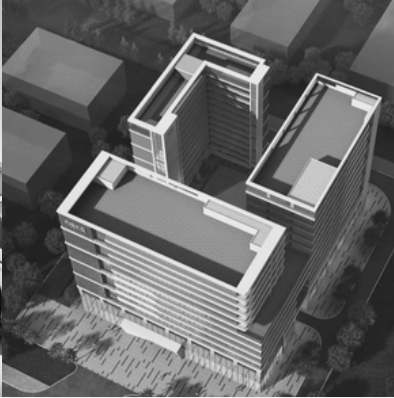
Swiss Headquarter



French Office



German office & warehouse



Huizhou Office & factory



**COMPANY  
STRENGTH**







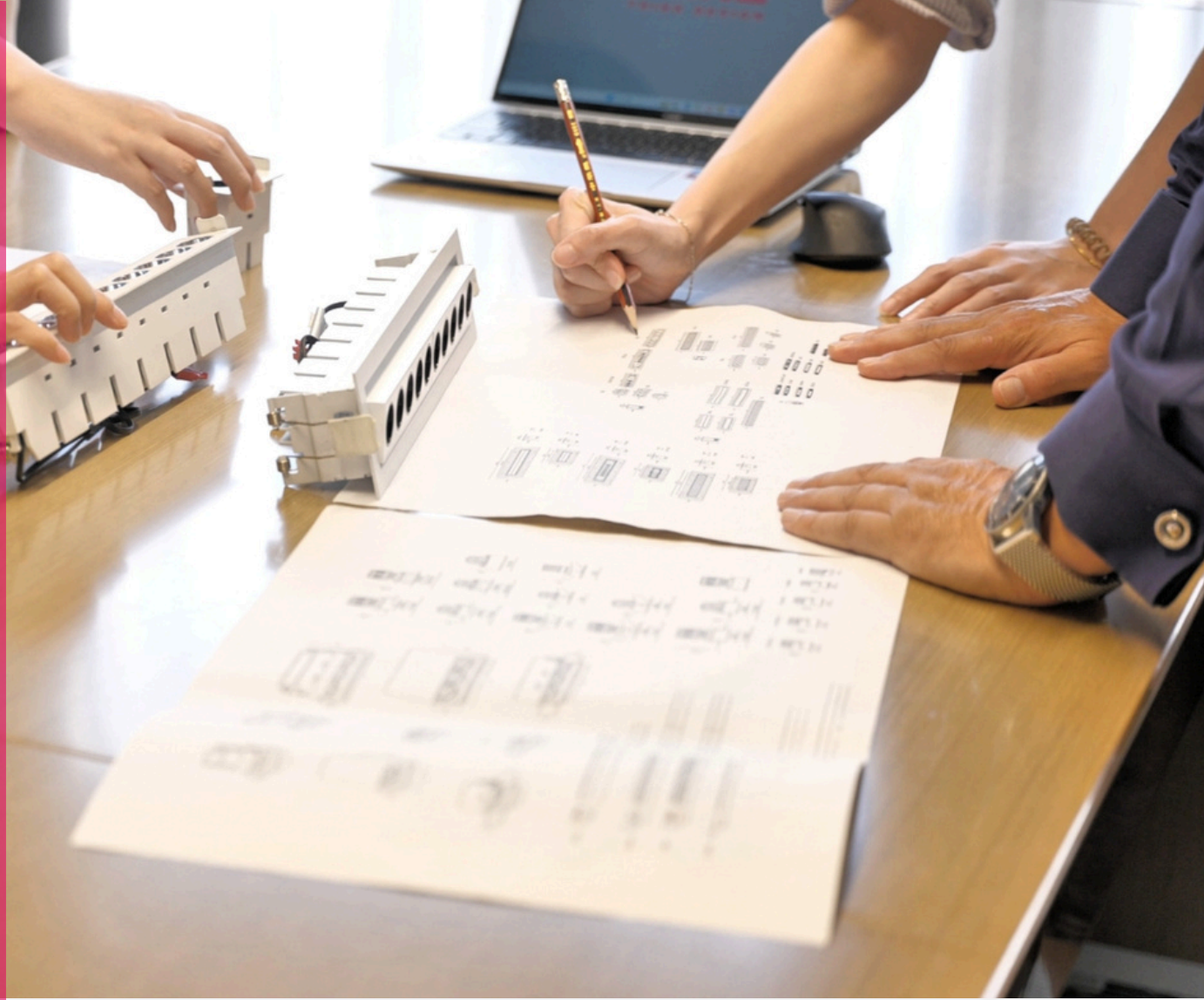
# GLOBAL REACH

# 170+

Offices & distributors across the globe

NEKO's **global reach** is unmatched, with a presence in key markets around the world. We've built a **powerful distribution network** that ensures our products are always within reach. It's this mix of worldwide access and precision that lets us light up spaces with style, no matter where you are.

# Research & Development



NEKO's team of **over 60 global professionals** is at the forefront of innovation, combining diverse expertise to **design and develop cutting-edge lighting solutions**. From initial concept to final production, our team is deeply involved in every stage of the product lifecycle, ensuring creativity, precision, and functionality in every design. This holistic approach allows us to consistently deliver advanced lighting solutions that meet the needs of customers worldwide.



# LABORATORY



NEKO operates its own state-of-the-art testing center, equipped with **over 150 advanced testing instruments**. Every product undergoes rigorous and comprehensive testing to ensure it meets the highest industry standards and delivers reliable performance. By combining precision testing with meticulous quality control, we guarantee that our lighting solutions not only meet but exceed customer expectations in functionality and durability.




# FACTORY

NEKO owns and operates its **independent factory**, spanning an impressive **48,000m<sup>2</sup>**. The facility is equipped with advanced **CNC machines**, a **surface treatment processing center**, a dedicated **manufacturing center**, an **in-house testing laboratory**, and a comprehensive **warehousing and logistics hub**. This integrated system enables a seamless workflow from design and production to rigorous quality inspection and efficient delivery. Our strict processes ensure that every product meets the highest standards, providing customers with reliable, high-quality lighting solutions they can trust.



# EFFECTIVE LOGISTICS

NEKO ensures efficient logistics with strategically located **warehouses in Europe and Asia**. This dual-hub system enables us to optimize delivery times and provide fast, reliable shipping to customers worldwide. By streamlining our supply chain across continents, we ensure that our products reach their destinations with maximum efficiency, meeting the demands of projects on a global scale.



# 120+

## Patents

- 7 Invention patent
- 63 Design patent
- 47 Utility model patent
- 5 Registered Community design, RCD

# Awards

- Red dot design award
- Red dot best of best design award
- iF Design award
- G-MARK design award (GOOD design)
- IDEA design award

NEKO takes pride in its commitment to innovation and design excellence, holding **over 120 patents** that reflect our dedication to advancing lighting technology. Our products have also been recognized with numerous **international design awards**, showcasing their exceptional quality, functionality, and aesthetic appeal on a global stage.



# COLLABORATORS

Lighting Solutions Trusted by the World's Leading Brands

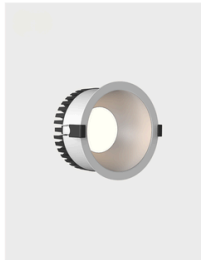
# PRODUCT PORTFOLIO







**NEKO / SENSE 2.0**  
LED Downlight  
Modular system  
Fixed, Adjustable, Wall Washer  
Easy installation



**NEKO / PASSION**  
High efficiency, up to 140lm/W  
General lighting, UGR<19  
IP54



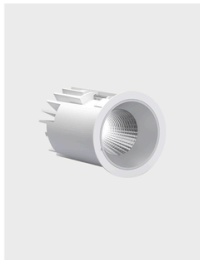
**NEKO / TAKEO / TAKEO Pro**  
Interchangeable Design  
Super eye comfort  
High efficiency



**NEKO / FUSION**  
Linear LED Downlight series  
High performance and visual comfort  
Fixed, Adjustable, Wall Washer, General Light, Spotlight  
Trimless versions



**NEKO / MINUX**  
Modular solution for small  
Ceiling cutout of Ø38mm, Ø44mm and Ø57mm  
Optimal glare control with UGR<19  
High lumen packages



**NEKO / VISION**  
Fixed Downlight and Wall Washer  
Powerful downlight solution  
Ceiling cutout of Ø68mm



**NEKO / CLUB**  
LED module  
Replacement for MR 16 halogen module  
Various fixture designs  
Decorative rings with magnetic design



**NEKO / SKYJACK**  
Downlights with low height  
Incl. Phase Dim Driver  
Incl. Fast Connection Junction Box  
IP55 Downlight Solution



**NEKO / Bollard Lights**  
Wide beam angle illuminates larger areas  
More elegant and welcoming  
Suitable for gardens, parks, and similar spaces



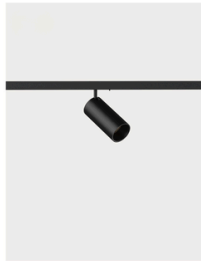
**NEKO / In-ground Lights**  
Waterproof class: IP67 Deep anti-glare design  
Stainless steel cover for enhanced reliability.



**NEKO / FUSION G2**  
Linear LED Downlight series  
High performance and visual comfort  
Fixed, Adjustable, Spotlight  
Higher efficiency and more beam angles



**NEKO / KENZO**  
Compact LED spotlight system  
Powerful light and energy efficient  
Adjustable accent lighting  
Suitable for any architectural ambience



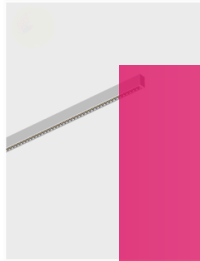
**NEKO / MODULINE 05**  
The ultra-slim linear modular system  
ON-OFF, Phase Dim, 1-10V Dim, DALI Dim



**NEKO / MODULINE 26**  
Wide range of light insets  
Versatile areas of application  
Flexible design options for the tracks  
ON-OFF, 1-10V Dim and DALI Dim



**NEKO / DASH**  
Light lines with 40mm or 50mm light track width  
Optional ON-OFF or DALI Dim  
Recessed, surface-mounted, pendant or wall-mounted luminaire  
Opal or microprismatic optics  
Made in Europe



**NEKO / DASH Smart**  
Replaceable linear light source  
Pendant, surface mount, recessed and panel solution  
Solution for 3-phase track



**NEKO / SPACE 60**  
65mm light track width  
Available in different lengths  
Microprismatic optics  
ON-OFF or DALI dimming options



**NEKO / FUSION LINEAR SYSTEM**  
Linear system with unlimited length  
Various and flexible options  
Suspended, surface-mounted, recessed



**NEKO / Recessed Ceiling Lights**  
Recessed aluminum body  
Various and flexible options  
Various applications



**NEKO / Ceiling Lights**  
Outdoor ceiling lights  
Various types to fit different applications



**NEKO / GAME**  
LED ceiling light for a wide range of application  
Microprismatic cover for super eye comfort  
Four diameters available (350, 450, 600, 900 mm)  
Suitable for ceiling mounted and suspended with wire or rod



**NEKO / SUGAR**  
Special design with recessed reflector  
Perfectly uniform lighting  
Microprism diffuser for a particularly good glare reduction  
Ceiling mounted and suspended with wire or rod



**NEKO / GINGER**  
Aluminum Frame  
Homogen Light  
CCT Switchable (3000K/3500K/4000K)  
IP44



**NEKO / PEPPER**  
Square LED Ceiling Light  
Opal Cover  
CCT Switchable (3000K/3500K/4000K)  
Microwave sensor or phase dim



**NEKO / MINT**  
ON-OFF, emergency light version or microwave sensor  
Power levels adjustable by switch  
2700K/3000K/4000K adjustable by switch  
Homogeneous light



**NEKO / MIU**  
Pendant or ceiling-mounted luminaire  
Various housing and reflector colors  
Decorative accent lighting



**NEKO / SKYDRIVER**  
Round or Square  
Incl. Phase Dim Driver  
Luminaire head rotatable and pivotable



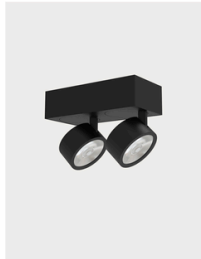
**NEKO / SKYJDY**  
Single or Double  
Low luminaire height of only 60mm  
Phase Dim driver built into housing  
Luminaire head freely movable



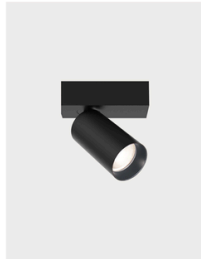
**NEKO / Recessed Ceiling Lights**  
Recessed aluminum body  
Various and flexible options  
Various applications



**NEKO / SKYLINE**  
Accent Lighting  
Linear LED ceiling mounted luminaire  
Phase Dim driver built into housing



**NEKO / VIBES**  
Recessed or surface mounted  
Round or square  
360° rotation  
Phase Dim driver in mounting base



**NEKO / BREEZE**  
Modern ceiling mounted Spotlight  
Driver built into mounting base  
Single, Double or Triple



**NEKO / PURE**  
LED tracklight with lens technology  
Housing with integrated driver  
Different beam angles



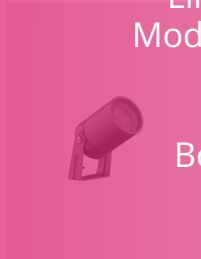
**NEKO / ROXY**  
Modern LED spotlight with lens technology  
Adjustable beam characteristics  
Perfectly suited for accent lighting  
Zoom function



**NEKO / INLINE**  
Available in black (RAL 9005) and white (RAL 9001)  
Direct connection to 230V  
Can be combined with spotlights and pendant luminaires  
Tracks can be shortened as desired



**NEKO / KOI**  
LED Light Up/Down  
Indirect warm white light  
Ideal for staircases, corridors or in rooms  
Dim-to-Warm available



**NEKO / Projectors**  
Available in different sizes  
Dimming options available  
High performance light with diverse lens options

37

# Series of Products

Downlight  
Track System  
Ceiling Light  
Spotlight System

Linear System  
Modular System  
Wall Lights  
Projectors  
Bollard Lights



# 1000+

## Projects across the globe

300+ Office  
150+ Hospitality  
200+ Residential  
200+ Retail  
100+ Public facilities  
50+ Outdoor  
...



A modern office interior featuring a large, tufted orange leather sofa in the foreground. The room is illuminated by several circular pendant lights hanging from a dark ceiling. Large glass windows and partitions offer a view of a city skyline. In the background, there are office desks with chairs and a meeting area with a table and chairs. The floor is a light-colored, textured material.

# Office

Deribit office, Panama



# Hospitality

Mandarin Oriental Hotel, Swiss



# Residential

Private Residence, Israel



# Retail

Maserati showroom , Italy



# Public facilities

Sara Kulturhus center, Norway





# Outdoor

Private Residence, Norway



**CONTACT  
INFO**



## NEKO Lighting AG

Swiss Headquarter  
Kreuzstrasse 2  
CH-8008 Zürich  
Switzerland

Tel. [\*\*+41 44 451 8015\*\*](tel:+41444518015)  
[\*\*sales@nekolighting.com\*\*](mailto:sales@nekolighting.com)

## NEKO Lighting Ltd.

Beijing Office  
Room 218, Huaxi Loft,  
5th Da Yang Fang Road,  
Chaoyang District, Beijing, China

Tel. [\*\*+86 173 2681 1100\*\*](tel:+8617326811100)

Factory  
Nairui Industrial Park,  
No. 5 Xinle Road, Ma'an Town,  
Huicheng District, Huizhou, China

Tel. [\*\*+86 755 3669 7712\*\*](tel:+8675536697712)  
[\*\*sales@nekolighting.com\*\*](mailto:sales@nekolighting.com)

Shanghai Office  
Haiyang Building Room 2811,  
No. 550, Yan'an East Road,  
Huangfu District, Shanghai, China

Tel. [\*\*+86 189 2602 8927\*\*](tel:+8618926028927)  
[\*\*sales@nekolighting.com\*\*](mailto:sales@nekolighting.com)

## NEKO Lighting GmbH

German Office  
Kruppstr. 47,  
59027 Ahlen, Germany

Sales, Marketing and Warehouse  
Lange Reihe 170,  
59071 Hamm, Germany

Tel. [\*\*+49 2381 877 09 60\*\*](tel:+4923818770960)  
[\*\*sales@nekolighting.de\*\*](mailto:sales@nekolighting.de)

## NEKO Lighting UK Ltd.

Head Office and UK Sales  
14E Calderdale Business park  
Club Lane  
Halifax  
HX2 8DB

Tel. [\*\*+44 330 0571 888\*\*](tel:+443300571888)  
[\*\*hello@nekolightinguk.com\*\*](mailto:hello@nekolightinguk.com)

## NEKO Lighting Singapore

The Quartz, Singapore

Tel. [\*\*+65 96442381\*\*](tel:+6596442381)  
[\*\*Jeremy@nekolighting.com\*\*](mailto:Jeremy@nekolighting.com)

## NEKO Lighting

France Office  
41 rue des dames,  
75017 Paris, France

Tel. [\*\*+33 1 44 50 20 30\*\*](tel:+33144502030)  
[\*\*sales@nekolighting.fr\*\*](mailto:sales@nekolighting.fr)

## NEKO Lighting India Pvt Ltd

Indian Office  
M no 901, A.P. Mordaree  
T.Haveli, Dist.Pune  
India

Tel. [\*\*+91 7410700999\*\*](tel:+917410700999)  
[\*\*neko.india@nekolighting.in\*\*](mailto:neko.india@nekolighting.in)

## NEKO Lighting Mexico

Interlomas No. 39 Int: 601 entre  
Calle Via magna y Calle Magno  
Centro,  
Col. La Herradura,  
CP: 52784, Huixquilucan,  
Estado de México, México

[\*\*administracion@nekolighting.com.mx\*\*](mailto:administracion@nekolighting.com.mx)

## NEKO Lighting INC.

Canada Office  
3035 Bates Road, Montreal,  
QC H3S 2W8, Canada

USA Office  
357 Cortlandt St  
Belleville NJ 07109 ,USA

Tel. [\*\*+1 833 837 6992 ext. 201\*\*](tel:+18338376992ext.201)  
[\*\*sales@nekolighting.com\*\*](mailto:sales@nekolighting.com)

## NEKO Lighting Middle East

Office 1905-55 Prism Tower  
Business Bay  
Dubai  
United Arab Emirates

Tel. [\*\*+971502426911\*\*](tel:+971502426911)  
[\*\*david@nekolighting.com\*\*](mailto:david@nekolighting.com)

## FIND US ON SOCIAL MEDIA PLATFORM



LINKEDIN  
@NEKO Lighting



FACEBOOK  
@NEKO Lighting AG



INSTAGRAM  
@nekolighting



YOUTUBE  
@NEKO Lighting

**NEKO**  
THINK DESIGN

# Think Design

Starts  
Here.

Discover more at ↙

[www.nekolighting.com](http://www.nekolighting.com)