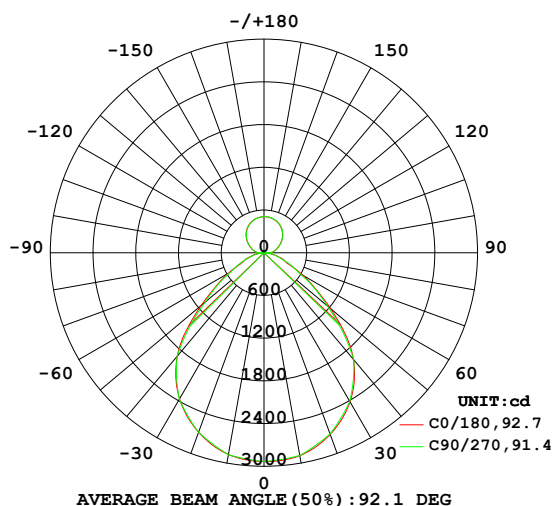


LUMINAIRE PHOTOMETRIC TEST REPORT

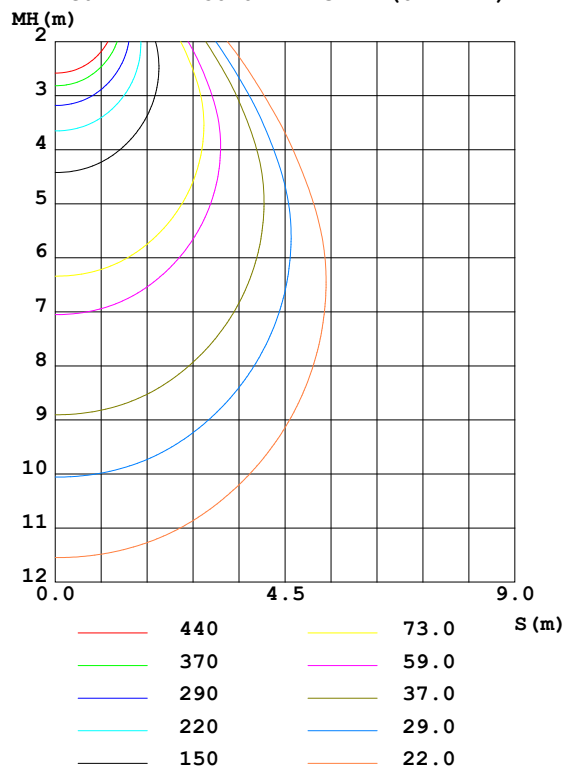
Test:U:220.6V I:0.3134A P:69.12W PF:0.9856 Freq:49.90Hz Lamp Flux:7898.96x1 lm		
NAME: SUGAR 600-U-68W-840	TYPE:Ceiling light	WEIGHT:
SPEC.:4000K	DIM.: ϕ 600mm*H105mm	SERIAL No.:
MFR.: NEKO LIGHTING AG	SUR.: ϕ 600mm	Shielding Angle:

DATA OF LAMP		PHOTOMETRIC DATA Eff: 114.27 lm/W			
MODEL	OSRAM-4000K	I _{max} (cd)	2933	S/MH (C0/180)	1.21
NOMINAL POWER (W)	70	LOR (%)	100.0	S/MH (C90/270)	1.21
RATED VOLTAGE (V)	220.0	TOTAL FLUX (lm)	7899.0	η UP,DN (C0-180)	11.3,39.4
NOMINAL FLUX (lm)	7898.96	CIE CLASS	SEMI-D.	η UP,DN (C180-360)	10.8,38.4
LAMPS INSIDE	1	η up (%)	22.1	CIBSE SHR NOM	1.25
TEST VOLTAGE (V)	220.0	η down (%)	77.9	CIBSE SHR MAX	1.30

LUMINOUS INTENSITY DISTRIBUTION DIAGRAM



C0 PLANE ISOLUX DIAGRAM (UNIT:lx)



C Range: 0 - 360DEG
C Interval: 5.0DEG
Test Speed: MEDIUM
Temperature:25.3DEG
Operators:Jason
Test Date:2019-11-28

γ Range: 0 - 180DEG
 γ Interval: 0.5DEG
Test System:EVERFINE GO-2000_V1 SYSTEM V2.0.362
Humidity:65.0%
Test Distance:5.850m [K=1.7094]
Remarks:

ZONAL FLUX DIAGRAM

ZONAL FLUX DIAGRAM:

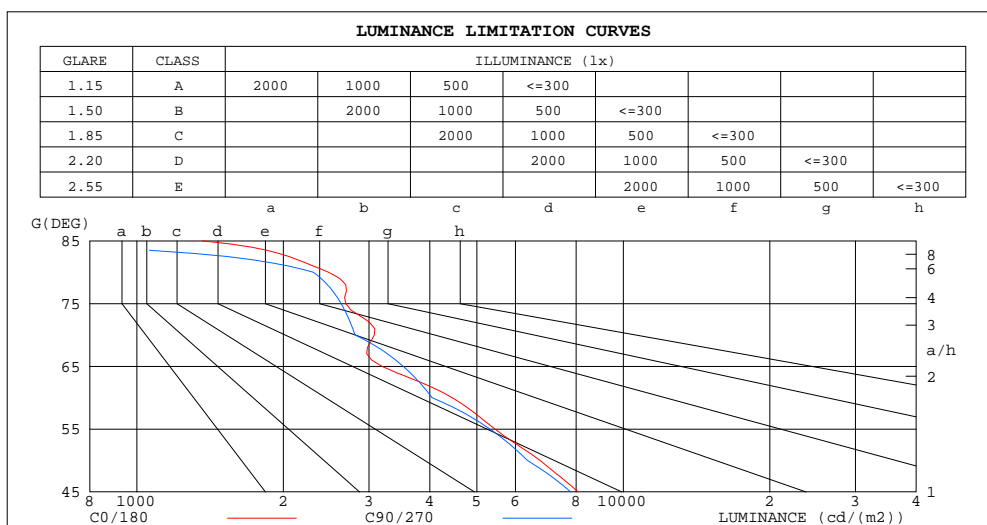
γ	C0	C45	C90	C135	C180	C225	C270	C315	γ	Φ zone	Φ total	Φ lum, lamp
10	2893	2882	2892	2870	2877	2861	2881	2875	0- 10	276.9	276.9	3.51,3.51
20	2716	2707	2710	2679	2684	2663	2685	2687	10- 20	788.7	1066	13.5,13.5
30	2417	2413	2410	2374	2371	2354	2378	2380	20- 30	1174	2239	28.4,28.4
40	1954	1975	1962	1911	1896	1885	1902	1919	30- 40	1355	3595	45.5,45.5
50	1224	1245	1153	1103	1151	1133	1072	1074	40- 50	1184	4778	60.5,60.5
60	628.2	625.7	571.4	554.5	582.2	574.0	532.3	547.9	50- 60	735.0	5513	69.8,69.8
70	297.4	293.8	271.5	264.4	280.1	264.8	259.2	260.1	60- 70	402.2	5915	74.9,74.9
80	121.5	123.1	113.1	106.2	102.9	97.72	90.64	99.10	70- 80	199.9	6115	77.4,77.4
90	94.97	95.73	93.75	86.41	83.10	78.13	84.25	88.55	80- 90	36.87	6152	77.9,77.9
100	146.8	148.9	148.0	141.9	135.8	131.7	133.1	141.9	90-100	124.8	6277	79.5,79.5
110	205.1	209.6	206.3	203.0	192.9	188.9	188.6	201.1	100-110	179.7	6457	81.7,81.7
120	270.7	280.7	274.0	269.6	256.6	251.5	251.7	266.1	110-120	229.7	6686	84.6,84.6
130	338.8	345.5	343.2	335.4	325.2	318.6	320.0	330.7	120-130	268.5	6955	88,88
140	399.1	404.7	404.0	395.9	387.4	381.2	382.1	390.2	130-140	280.9	7236	91.6,91.6
150	447.7	452.4	452.2	445.7	438.6	433.5	433.9	440.4	140-150	262.7	7498	94.9,94.9
160	482.3	485.9	485.8	481.3	476.3	472.6	472.8	477.2	150-160	213.5	7712	97.6,97.6
170	502.5	504.4	504.4	502.1	499.5	497.6	497.7	499.9	160-170	139.0	7851	99.4,99.4
180	508.1	508.1	508.1	508.1	508.1	508.1	508.1	508.1	170-180	48.17	7899	100,100
DEG	LUMINOUS INTENSITY:cd									UNIT:lm		

C Range: 0 - 360DEG
C Interval: 5.0DEG
Test Speed: MEDIUM
Temperature:25.3DEG
Operators:Jason
Test Date:2019-11-28

γ Range: 0 - 180DEG
 γ Interval: 0.5DEG
Test System:EVERFINE GO-2000_V1 SYSTEM V2.0.362
Humidity:65.0%
Test Distance:5.850m [K=1.7094]
Remarks:

LUMINANCE LIMITATION CURVES

Test:U:220.6V I:0.3134A P:69.12W PF:0.9856 Freq:49.90Hz Lamp Flux:7898.96x1 lm		
NAME: SUGAR 600-U-68W-840	TYPE:Ceiling light	WEIGHT:
SPEC.:4000K	DIM.: $\phi 600\text{mm} \times \text{H}105\text{mm}$	SERIAL No.:
MFR.: NEKO LIGHTING AG	SUR.: $\phi 600\text{mm}$	Shielding Angle:



LUMINANCE cd/(m2)		
G(DEG)	C0/180	C90/270
85	1362	0
80	2476	2305
75	2687	2630
70	3077	2809
65	3187	3529
60	4446	4044
55	5447	5321
50	6738	6350
45	8068	7797

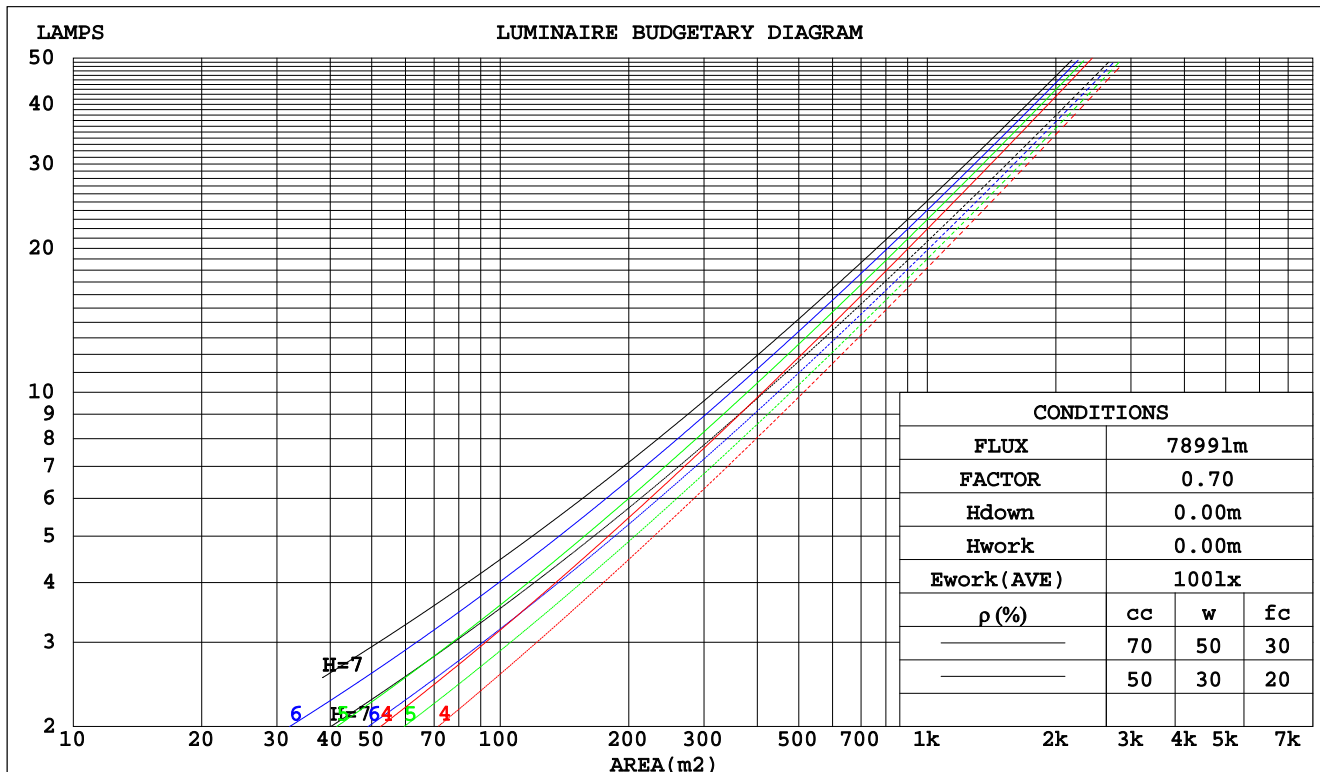
C Range: 0 - 360DEG
C Interval: 5.0DEG
Test Speed: MEDIUM
Temperature:25.3DEG
Operators:Jason
Test Date:2019-11-28

γ Range: 0 - 180DEG
 γ Interval: 0.5DEG
Test System:EVERFINE GO-2000_V1 SYSTEM V2.0.362
Humidity:65.0%
Test Distance:5.850m [K=1.7094]
Remarks:

CU AND LUMINAIRE BUDGETARY ESTIMATE DIAGRAM

Test:U:220.6V I:0.3134A P:69.12W PF:0.9856 Freq:49.90Hz Lamp Flux:7898.96x1 lm		
NAME: SUGAR 600-U-68W-840	TYPE:Ceiling light	WEIGHT:
SPEC.:4000K	DIM.: ϕ 600mm*H105mm	SERIAL No.:
MFR.: NEKO LIGHTING AG	SUR.: ϕ 600mm	Shielding Angle:

ρ_{cc}	80%			70%			50%			30%			10%			0
ρ_w	50%	30%	10%	50%	30%	10%	50%	30%	10%	50%	30%	10%	50%	30%	10%	0
ρ_{fc}	20%			20%			20%			20%			20%			0
RCR	Coefficients of Utilization(CU)															
0.0	1.14	1.14	1.14	1.09	1.09	1.09	.99	.99	.99	.90	.90	.90	.82	.82	.82	.78
1.0	1.01	.98	.95	.97	.94	.91	.89	.86	.84	.81	.79	.78	.74	.73	.72	.68
2.0	.90	.84	.80	.86	.81	.77	.79	.75	.72	.73	.70	.67	.67	.65	.62	.59
3.0	.80	.73	.68	.77	.71	.66	.71	.66	.62	.66	.62	.58	.61	.57	.55	.52
4.0	.72	.64	.59	.69	.62	.57	.64	.58	.54	.59	.55	.51	.55	.51	.48	.45
5.0	.65	.57	.51	.63	.55	.50	.58	.52	.47	.54	.49	.45	.50	.46	.43	.40
6.0	.59	.51	.45	.57	.50	.44	.53	.47	.42	.49	.44	.40	.46	.41	.38	.36
7.0	.54	.46	.40	.52	.45	.39	.48	.42	.38	.45	.40	.36	.42	.38	.34	.32
8.0	.49	.41	.36	.47	.40	.35	.44	.38	.34	.42	.36	.32	.39	.34	.31	.29
9.0	.45	.38	.33	.44	.37	.32	.41	.35	.31	.38	.33	.29	.36	.32	.28	.26
10.0	.42	.34	.30	.40	.34	.29	.38	.32	.28	.36	.31	.27	.34	.29	.26	.24



C Range: 0 - 360DEG
C Interval: 5.0DEG
Test Speed: MEDIUM
Temperature:25.3DEG
Operators:Jason
Test Date:2019-11-28

γ Range: 0 - 180DEG
 γ Interval: 0.5DEG
Test System:EVERFINE GO-2000_V1 SYSTEM V2.0.362
Humidity:65.0%
Test Distance:5.850m [K=1.7094]
Remarks:

WEC AND CCEC

Test:U:220.6V I:0.3134A P:69.12W PF:0.9856 Freq:49.90Hz Lamp Flux:7898.96x1 lm		
NAME: SUGAR 600-U-68W-840	TYPE:Ceiling light	WEIGHT:
SPEC.:4000K	DIM.: φ600mm*H105mm	SERIAL No.:
MFR.: NEKO LIGHTING AG	SUR.:φ600mm	Shielding Angle:

pcc	80%			70%			50%			30%			10%			0	
pw	50%	30%	10%	50%	30%	10%	50%	30%	10%	50%	30%	10%	50%	30%	10%	0	
pfc	20%			20%			20%			20%			20%			0	
RCR	RCR:Room Cavity Ratio						Wall Exitance Coefficients(WEC)										
0.0																	
1.0	.255	.145	.046	.242	.138	.044	.216	.124	.040	.193	.111	.036	.171	.099	.032		
2.0	.244	.134	.041	.231	.127	.039	.209	.116	.036	.187	.105	.033	.168	.095	.030		
3.0	.229	.122	.037	.218	.117	.035	.197	.107	.033	.178	.098	.030	.160	.089	.027		
4.0	.214	.111	.033	.205	.107	.032	.186	.098	.029	.168	.090	.027	.152	.083	.025		
5.0	.201	.102	.030	.192	.098	.029	.175	.091	.027	.159	.084	.025	.144	.077	.023		
6.0	.188	.094	.027	.180	.091	.026	.164	.084	.025	.150	.078	.023	.136	.072	.021		
7.0	.177	.088	.025	.169	.084	.024	.155	.078	.023	.141	.073	.021	.129	.067	.020		
8.0	.167	.081	.023	.160	.079	.022	.146	.073	.021	.134	.068	.020	.122	.063	.018		
9.0	.157	.076	.021	.151	.074	.021	.139	.068	.019	.127	.064	.018	.116	.059	.017		
10.0	.149	.071	.020	.143	.069	.019	.131	.064	.018	.121	.060	.017	.110	.056	.016		

pcc	80%			70%			50%			30%			10%			0
pw	50%	30%	10%	50%	30%	10%	50%	30%	10%	50%	30%	10%	50%	30%	10%	0
pfc	20%			20%			20%			20%			20%			0
RCR	RCR:Room Cavity Ratio						Ceiling Cavity Exitance Coefficients(CCEC)									
0.0	.359	.359	.359	.307	.307	.307	.209	.209	.209	.120	.120	.120	.038	.038	.038	
1.0	.346	.327	.309	.296	.280	.266	.203	.193	.184	.117	.112	.107	.037	.036	.035	
2.0	.337	.303	.275	.289	.261	.238	.198	.181	.166	.114	.105	.097	.037	.034	.032	
3.0	.329	.286	.252	.282	.247	.219	.193	.171	.153	.112	.100	.090	.036	.032	.030	
4.0	.321	.273	.236	.275	.236	.205	.189	.164	.144	.110	.096	.085	.035	.031	.028	
5.0	.314	.263	.225	.270	.227	.196	.186	.159	.138	.108	.093	.082	.035	.030	.027	
6.0	.308	.255	.217	.264	.220	.189	.182	.154	.133	.106	.091	.079	.034	.030	.026	
7.0	.301	.248	.210	.259	.215	.183	.179	.151	.130	.104	.089	.077	.034	.029	.026	
8.0	.296	.242	.206	.255	.210	.179	.176	.148	.127	.102	.087	.076	.033	.029	.025	
9.0	.290	.238	.202	.250	.206	.176	.173	.145	.125	.101	.086	.075	.033	.028	.025	
10.0	.285	.234	.199	.246	.203	.174	.171	.143	.123	.100	.084	.074	.032	.028	.024	

C Range: 0 - 360DEG
C Interval: 5.0DEG
Test Speed: MEDIUM
Temperature:25.3DEG
Operators:Jason
Test Date:2019-11-28

γ Range: 0 - 180DEG
γ Interval: 0.5DEG
Test System:EVERFINE GO-2000_V1 SYSTEM V2.0.362
Humidity:65.0%
Test Distance:5.850m [K=1.7094]
Remarks:

UGR(Unified Glare Rating) Table

Test:U:220.6V I:0.3134A P:69.12W PF:0.9856 Freq:49.90Hz Lamp Flux:7898.96x1 lm										
NAME: SUGAR 600-U-68W-840					TYPE:Ceiling light			WEIGHT:		
SPEC.:4000K					DIM.: ϕ 600mm*H105mm			SERIAL No.:		
MFR.: NEKO LIGHTING AG					SUR.: ϕ 600mm			Shielding Angle:		
ceiling/cavity	0.7	0.7	0.5	0.5	0.3	0.7	0.7	0.5	0.5	0.3
walls	0.5	0.3	0.5	0.3	0.3	0.5	0.3	0.5	0.3	0.3
working plane	0.2	0.2	0.2	0.2	0.2	0.2	0.2	0.2	0.2	0.2
Room dimensions	Viewed crosswise					Viewed endwise				
x = 2H y = 2H	9.9	11.0	10.4	11.5	12.1	9.8	10.9	10.4	11.5	12.1
3H	10.4	11.4	10.9	11.9	12.6	10.3	11.3	10.9	11.9	12.5
4H	10.6	11.5	11.2	12.1	12.8	10.5	11.5	11.1	12.0	12.7
6H	10.7	11.6	11.3	12.2	12.9	10.6	11.5	11.3	12.1	12.8
8H	10.7	11.6	11.3	12.2	12.9	10.6	11.5	11.3	12.1	12.8
12H	10.7	11.5	11.3	12.1	12.8	10.6	11.4	11.2	12.0	12.7
4H 2H	10.0	11.0	10.6	11.5	12.2	10.0	10.9	10.6	11.5	12.1
3H	10.7	11.5	11.3	12.1	12.8	10.7	11.5	11.3	12.1	12.8
4H	11.0	11.7	11.6	12.3	13.1	11.0	11.7	11.6	12.3	13.1
6H	11.2	11.8	11.9	12.5	13.3	11.2	11.8	11.9	12.5	13.3
8H	11.2	11.8	11.9	12.5	13.3	11.2	11.8	11.9	12.5	13.3
12H	11.2	11.7	11.9	12.4	13.2	11.1	11.7	11.9	12.4	13.2
8H 4H	11.0	11.6	11.7	12.3	13.1	11.0	11.6	11.7	12.3	13.1
6H	11.3	11.8	12.1	12.5	13.4	11.3	11.8	12.1	12.5	13.4
8H	11.4	11.8	12.1	12.5	13.4	11.4	11.8	12.1	12.5	13.4
12H	11.4	11.7	12.1	12.5	13.4	11.3	11.7	12.1	12.4	13.4
12H 4H	11.0	11.5	11.7	12.2	13.0	11.0	11.5	11.7	12.2	13.0
6H	11.3	11.7	12.1	12.5	13.3	11.3	11.7	12.1	12.5	13.3
8H	11.4	11.7	12.2	12.5	13.4	11.4	11.7	12.2	12.5	13.4
Variations with the observer position at spacings:										
S = 1.0H	+ 0.6 / - 0.6					+ 0.5 / - 0.5				
1.5H	+ 0.3 / - 0.3					+ 0.3 / - 0.4				
2.0H	+ 1.3 / - 1.0					+ 1.2 / - 1.1				

CIE Pub.117, 7899 lm Total Lamp Luminous Flux Correct ($8\log(F/F_0) = 7.2$)

C Range: 0 - 360DEG
C Interval: 5.0DEG
Test Speed: MEDIUM
Temperature:25.3DEG
Operators:Jason
Test Date:2019-11-28

γ Range: 0 - 180DEG
 γ Interval: 0.5DEG
Test System:EVERFINE GO-2000_V1 SYSTEM V2.0.362
Humidity:65.0%
Test Distance:5.850m [K=1.7094]
Remarks:

UTILIZATION FACTORS TABLE

Test:U:220.6V I:0.3134A P:69.12W PF:0.9856 Freq:49.90Hz Lamp Flux:7898.96x1 lm		
NAME: SUGAR 600-U-68W-840	TYPE:Ceiling light	WEIGHT:
SPEC.:4000K	DIM.: ϕ 600mm*H105mm	SERIAL No.:
MFR.: NEKO LIGHTING AG	SUR.: ϕ 600mm	Shielding Angle:

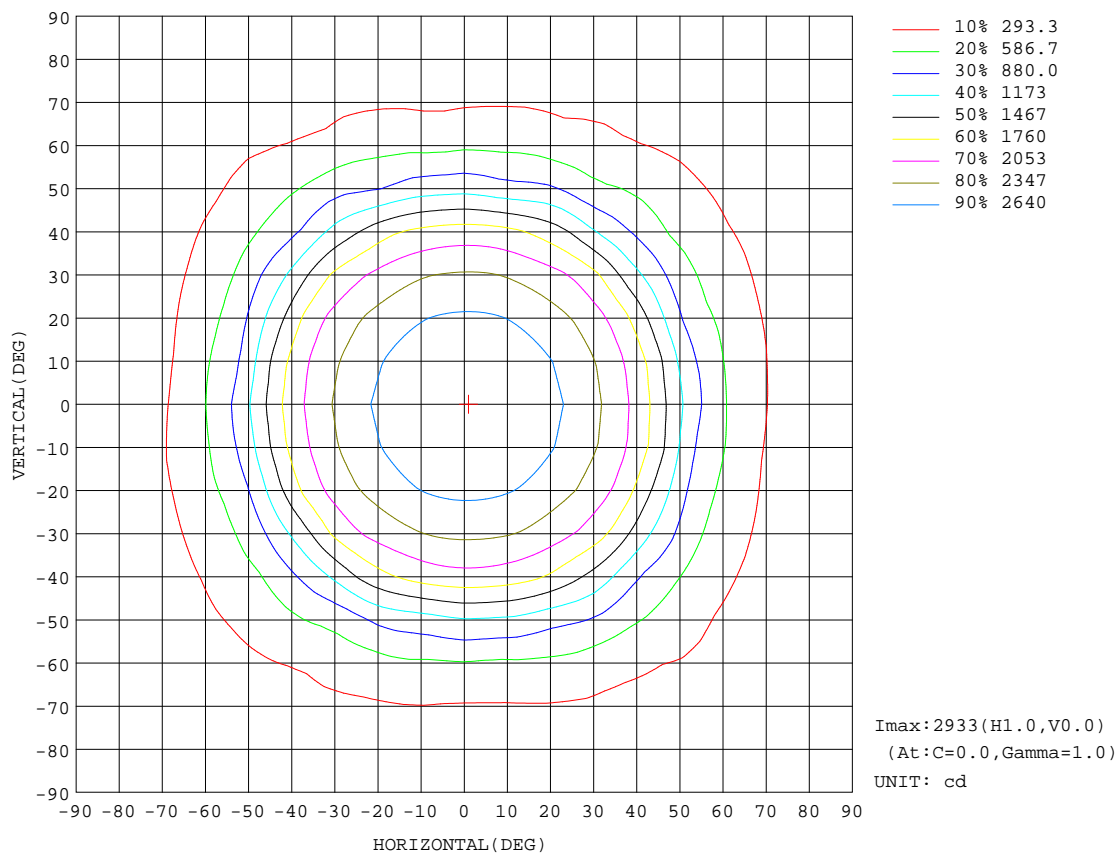
REFLECTANCE										
Ceiling	0.8	0.8	0.8	0.7	0.7	0.7	0.5	0.5	0.5	0
Walls	0.7	0.5	0.3	0.7	0.5	0.3	0.7	0.5	0.3	0
Working plane	0.2	0.2	0.2	0.2	0.2	0.2	0.2	0.2	0.2	0
ROOM INDEX	UTILIZATION FACTORS(PERCENT) $k(RI) \times RCR = 5$									
$k = 0.60$	57	47	41	56	46	41	54	45	40	34
0.80	67	57	50	65	56	50	62	54	48	41
1.00	75	65	59	73	64	58	69	63	56	48
1.25	82	72	66	79	70	65	74	67	62	53
1.50	86	77	71	83	75	70	78	71	67	57
2.00	92	85	79	89	82	77	83	77	73	61
2.50	96	89	83	92	86	81	85	80	76	64
3.00	99	92	87	95	89	85	88	83	80	66
4.00	102	97	93	98	93	90	90	87	84	69
5.00	104	100	96	100	96	93	92	89	86	70
ROOM INDEX	UF(total)									Direct
According to DIN EN 13032-2 2004			Suspended					SHRNOM = 1.25		

C Range: 0 - 360DEG
C Interval: 5.0DEG
Test Speed: MEDIUM
Temperature:25.3DEG
Operators:Jason
Test Date:2019-11-28

γ Range: 0 - 180DEG
 γ Interval: 0.5DEG
Test System:EVERFINE GO-2000_V1 SYSTEM V2.0.362
Humidity:65.0%
Test Distance:5.850m [K=1.7094]
Remarks:

ISOCANDELA DIAGRAM

Test:U:220.6V I:0.3134A P:69.12W PF:0.9856 Freq:49.90Hz Lamp Flux:7898.96x1 lm		
NAME: SUGAR 600-U-68W-840	TYPE:Ceiling light	WEIGHT:
SPEC.:4000K	DIM.: ϕ 600mm*H105mm	SERIAL No.:
MFR.: NEKO LIGHTING AG	SUR.: ϕ 600mm	Shielding Angle:

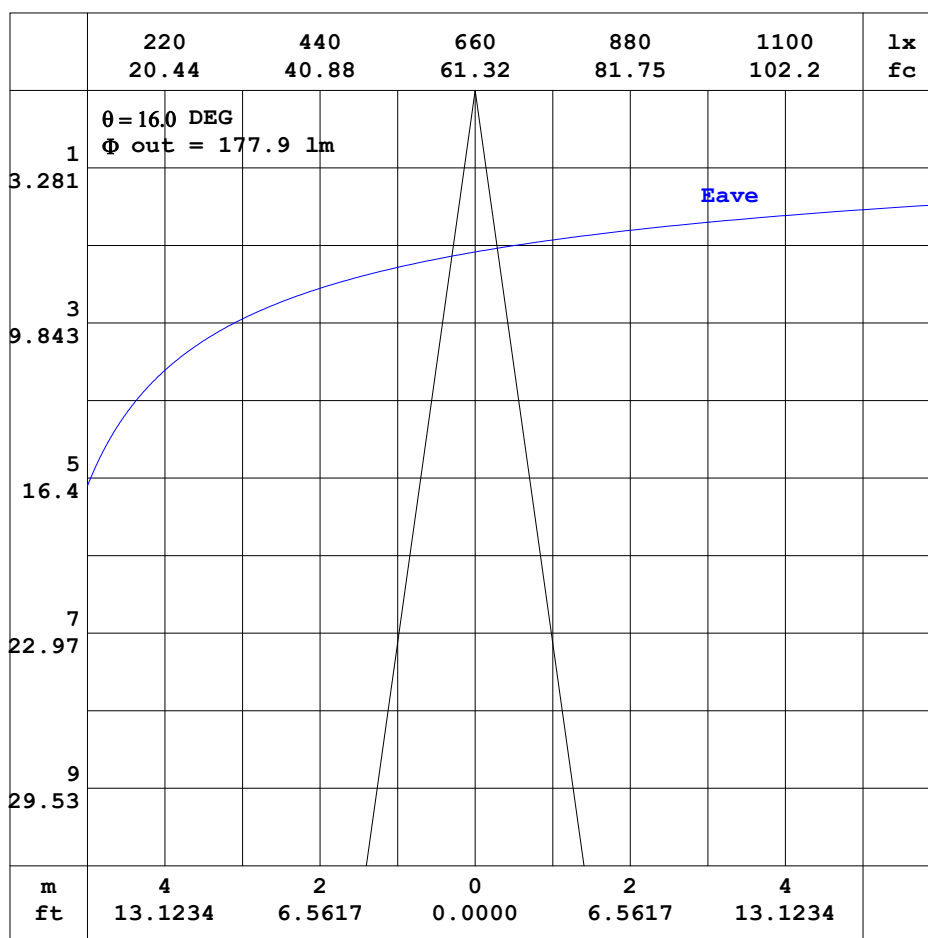


C Range: 0 - 360DEG
C Interval: 5.0DEG
Test Speed: MEDIUM
Temperature:25.3DEG
Operators:Jason
Test Date:2019-11-28

γ Range: 0 - 180DEG
 γ Interval: 0.5DEG
Test System:EVERFINE GO-2000_V1 SYSTEM V2.0.362
Humidity:65.0%
Test Distance:5.850m [K=1.7094]
Remarks:

AAI CURVES

Test:U:220.6V I:0.3134A P:69.12W PF:0.9856 Freq:49.90Hz Lamp Flux:7898.96x1 lm		
NAME: SUGAR 600-U-68W-840	TYPE:Ceiling light	WEIGHT:
SPEC.:4000K	DIM.: ϕ 600mm*H105mm	SERIAL No.:
MFR.: NEKO LIGHTING AG	SUR.: ϕ 600mm	Shielding Angle:



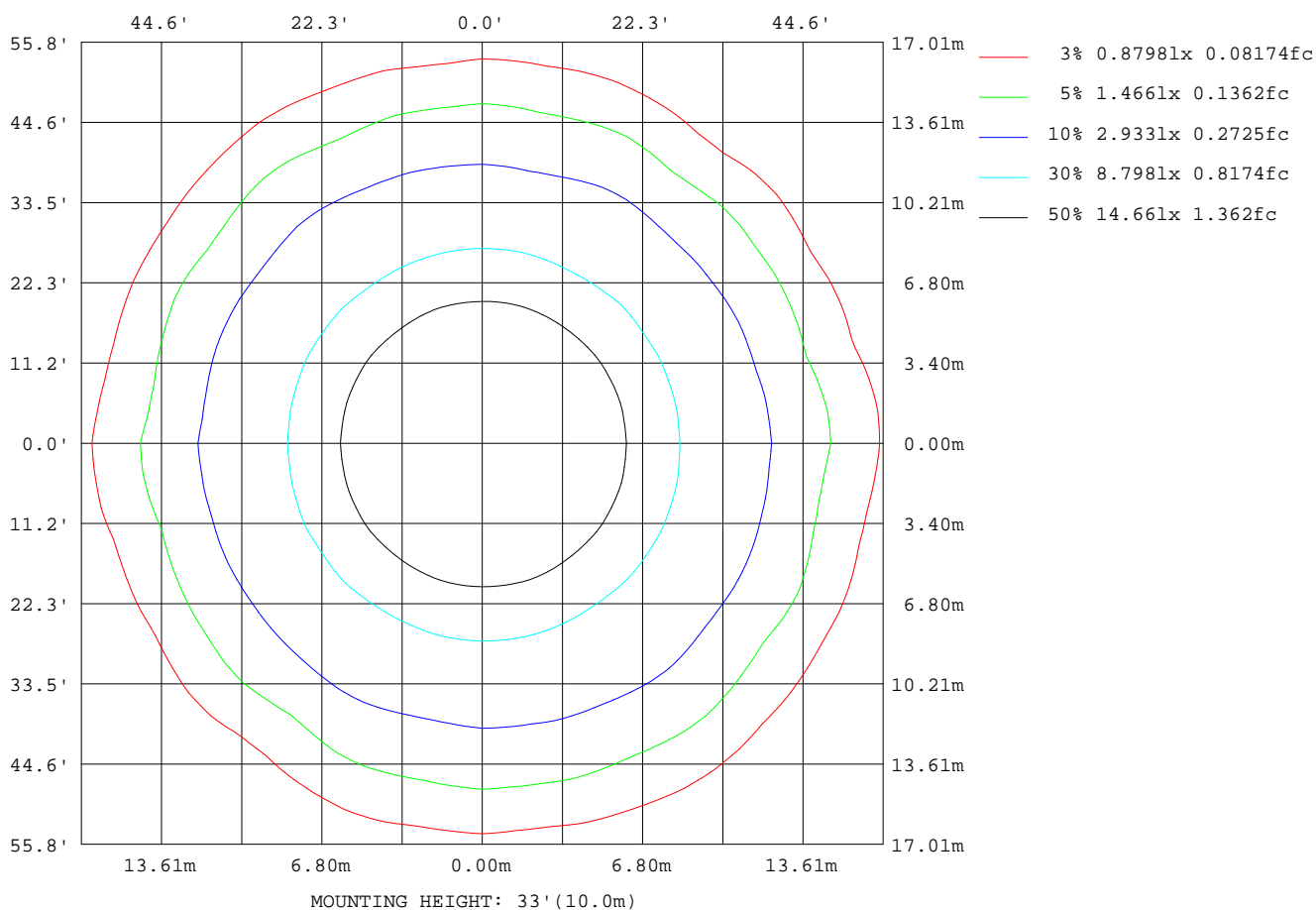
Note:The Curves indicate the illuminated area and the average illumination when the luminaire is at different distance.

C Range: 0 - 360DEG
C Interval: 5.0DEG
Test Speed: MEDIUM
Temperature:25.3DEG
Operators:Jason
Test Date:2019-11-28

γ Range: 0 - 180DEG
 γ Interval: 0.5DEG
Test System:EVERFINE GO-2000_V1 SYSTEM V2.0.362
Humidity:65.0%
Test Distance:5.850m [K=1.7094]
Remarks:

ISOLUX DIAGRAM

Test:U:220.6V I:0.3134A P:69.12W PF:0.9856 Freq:49.90Hz Lamp Flux:7898.96x1 lm		
NAME: SUGAR 600-U-68W-840	TYPE:Ceiling light	WEIGHT:
SPEC.:4000K	DIM.: ϕ 600mm*H105mm	SERIAL No.:
MFR.: NEKO LIGHTING AG	SUR.: ϕ 600mm	Shielding Angle:



C Range: 0 - 360DEG
C Interval: 5.0DEG
Test Speed: MEDIUM
Temperature:25.3DEG
Operators:Jason
Test Date:2019-11-28

γ Range: 0 - 180DEG
 γ Interval: 0.5DEG
Test System:EVERFINE GO-2000_V1 SYSTEM V2.0.362
Humidity:65.0%
Test Distance:5.850m [K=1.7094]
Remarks:

LED Avg.L Report

Test:U:220.6V I:0.3134A P:69.12W PF:0.9856 Freq:49.90Hz Lamp Flux:7898.96x1 lm		
NAME: SUGAR 600-U-68W-840	TYPE:Ceiling light	WEIGHT:
SPEC.:4000K	DIM.: ϕ 600mm*H105mm	SERIAL No.:
MFR.: NEKO LIGHTING AG	SUR.: ϕ 600mm	Shielding Angle:

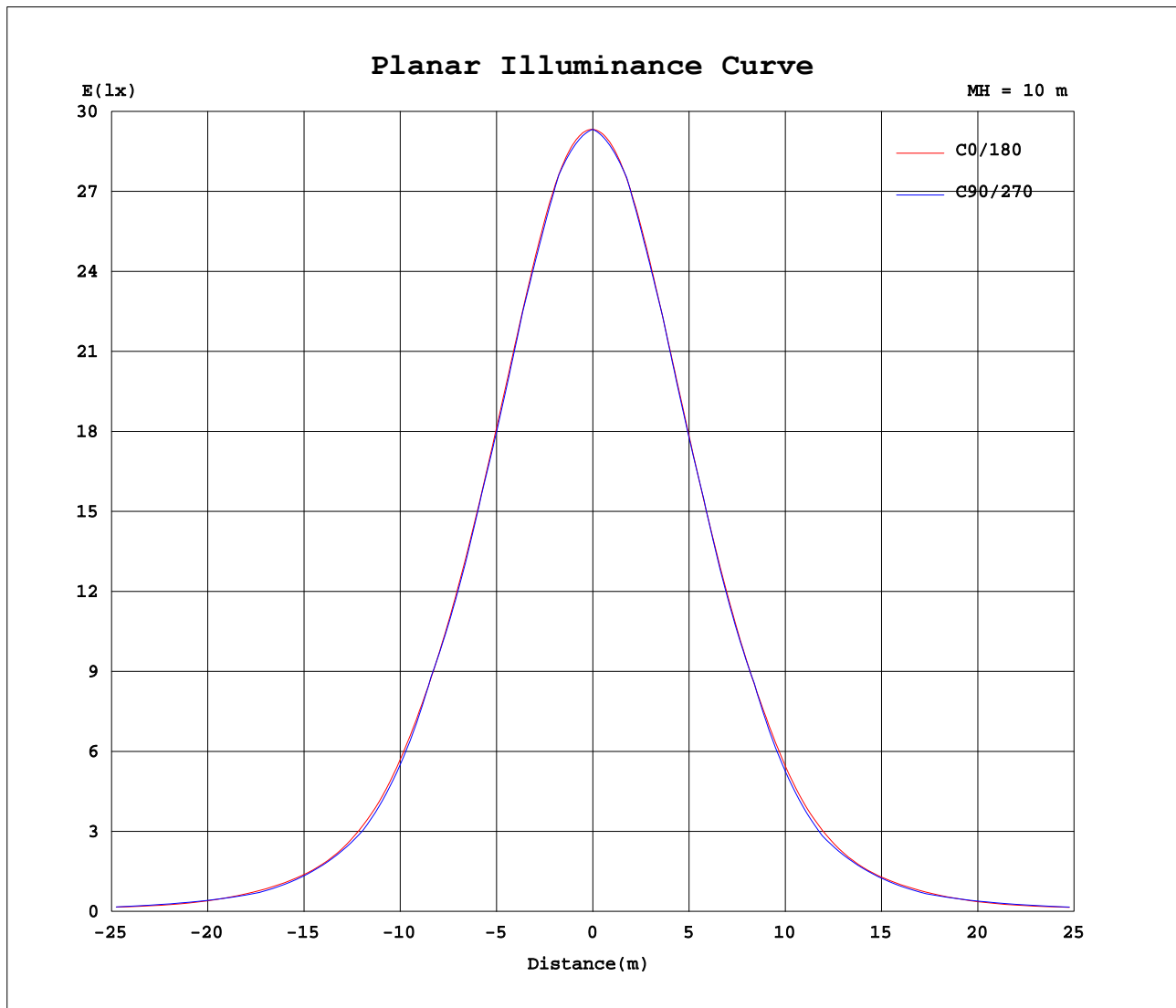
AvgL	cd/m2
L_0~180 (65) av	3078
L_0~180 (75) av	2579
L_0~180 (85) av	1076
L_90~270 (65) av	3421
L_90~270 (75) av	2511
L_90~270 (85) av	0
L_45 (65) av	3334
L_45 (75) av	2606
L_45 (85) av	954

Standard: GB/T 29293-2012

C Range: 0 - 360DEG
C Interval: 5.0DEG
Test Speed: MEDIUM
Temperature:25.3DEG
Operators:Jason
Test Date:2019-11-28

γ Range: 0 - 180DEG
 γ Interval: 0.5DEG
Test System:EVERFINE GO-2000_V1 SYSTEM V2.0.362
Humidity:65.0%
Test Distance:5.850m [K=1.7094]
Remarks:

Planar Illuminance Curve



C Range: 0 - 360DEG
C Interval: 5.0DEG
Test Speed: MEDIUM
Temperature: 25.3DEG
Operators: Jason
Test Date: 2019-11-28

γ Range: 0 - 180DEG
 γ Interval: 0.5DEG
Test System: EVERFINE GO-2000_V1 SYSTEM V2.0.362
Humidity: 65.0%
Test Distance: 5.850m [K=1.7094]
Remarks:

LUMINOUS DISTRIBUTION INTENSITY DATA

Test:U:220.6V I:0.3134A P:69.12W PF:0.9856 Freq:49.90Hz Lamp Flux:7898.96x1 lm		
NAME: SUGAR 600-U-68W-840	TYPE:Ceiling light	WEIGHT:
SPEC.:4000K	DIM.: φ600mm*H105mm	SERIAL No.:
MFR.: NEKO LIGHTING AG	SUR.:φ600mm	Shielding Angle:

Table--1

UNIT: cd

C (DEG) γ (DEG)	0	5	10	15	20	25	30	35	40	45	50	55	60	65	70	75	80	85	90
0	2933	2933	2933	2933	2933	2933	2933	2933	2933	2933	2933	2933	2933	2933	2933	2933	2933	2933	2933
5	2926	2924	2922	2921	2919	2918	2917	2916	2916	2915	2915	2914	2914	2914	2913	2913	2913	2912	2912
10	2893	2889	2885	2883	2881	2880	2880	2880	2881	2882	2884	2886	2887	2889	2890	2891	2892	2892	2892
15	2821	2815	2811	2809	2809	2811	2815	2819	2824	2821	2817	2813	2810	2808	2806	2804	2803	2802	2801
20	2716	2708	2704	2704	2707	2714	2719	2713	2709	2707	2706	2706	2707	2708	2710	2711	2711	2711	2710
25	2583	2574	2571	2573	2581	2580	2575	2573	2575	2579	2585	2582	2576	2572	2569	2566	2563	2561	2560
30	2417	2410	2412	2421	2423	2415	2415	2420	2424	2413	2408	2407	2410	2413	2414	2413	2412	2411	2410
35	2210	2209	2220	2239	2228	2228	2237	2226	2214	2210	2212	2221	2213	2207	2201	2195	2191	2188	2186
40	1954	1954	1975	1975	1971	1990	1978	1974	1980	1975	1947	1940	1945	1952	1957	1960	1963	1964	1962
45	1612	1617	1655	1621	1618	1619	1626	1656	1644	1628	1615	1626	1636	1622	1606	1590	1570	1561	1558
50	1224	1209	1220	1219	1227	1231	1236	1223	1226	1245	1265	1254	1228	1203	1195	1190	1164	1153	1153
55	883	837	825	837	872	904	886	850	868	903	932	918	882	864	871	877	857	854	862
60	628	620	602	595	607	612	610	621	630	626	642	649	645	626	607	592	561	557	571
65	381	417	417	430	443	443	438	430	440	432	410	395	435	446	437	430	414	413	421
70	297	287	291	292	285	281	308	311	291	294	294	299	314	313	307	292	280	274	272
75	197	204	195	205	198	191	195	204	200	213	204	210	215	210	206	202	195	191	192
80	121	115	107	105	112	111	118	114	113	123	123	124	124	123	114	117	112	109	113
85	33.5	21.4	24.5	28.0	31.6	32.4	33.6	34.1	33.1	29.1	25.7	20.7	15.3	11.0	6.57	3.88	1.69	0.41	0.00
90	95.0	95.8	96.5	96.9	97.0	97.0	96.8	96.5	96.1	95.7	95.5	95.3	95.2	95.2	0.00	0.00	94.8	94.3	93.7
95	120	121	122	122	123	123	123	123	122	122	122	122	122	122	122	122	122	122	122
100	147	148	149	149	150	150	150	150	149	149	149	150	150	150	149	149	148	148	148
105	175	176	177	178	179	180	180	180	180	181	181	181	181	180	179	177	177	176	176
110	205	206	207	208	209	209	210	210	210	211	212	212	212	211	210	209	208	207	206
115	237	238	239	240	241	241	242	242	243	243	245	246	246	245	244	242	241	240	239
120	271	272	273	274	276	279	280	281	281	281	281	281	281	280	279	278	277	275	274
125	305	306	308	309	312	314	316	314	313	311	313	315	317	316	316	314	313	311	309
130	339	340	341	343	345	348	349	349	347	346	345	345	346	347	348	349	347	345	343
135	370	372	373	374	375	376	376	376	376	376	376	377	377	377	376	376	376	375	375
140	399	400	401	402	403	404	404	405	405	405	405	405	406	405	405	405	404	404	404
145	425	426	427	428	429	429	430	430	430	430	431	431	431	431	431	430	430	430	430
150	448	449	449	450	451	452	452	452	452	452	453	453	453	453	453	453	453	452	452
155	467	468	468	469	470	470	471	471	471	471	471	472	472	472	471	471	471	471	471
160	482	483	484	484	485	485	485	486	486	486	486	486	487	486	486	486	486	486	486
165	494	495	495	496	496	496	497	497	497	497	497	497	498	497	497	497	497	497	497
170	502	503	503	503	504	504	504	504	504	504	505	505	505	505	505	505	505	504	504
175	507	507	507	508	508	508	508	508	508	508	508	508	508	508	508	508	508	508	508
180	508	508	508	508	508	508	508	508	508	508	508	508	508	508	508	508	508	508	508

C Range: 0 - 360DEG
C Interval: 5.0DEG
Test Speed: MEDIUM
Temperature:25.3DEG
Operators:Jason
Test Date:2019-11-28

γ Range: 0 - 180DEG
γ Interval: 0.5DEG
Test System:EVERFINE GO-2000_V1 SYSTEM V2.0.362
Humidity:65.0%
Test Distance:5.850m [K=1.7094]
Remarks:

LUMINOUS DISTRIBUTION INTENSITY DATA

Test:U:220.6V I:0.3134A P:69.12W PF:0.9856 Freq:49.90Hz Lamp Flux:7898.96x1 lm		
NAME: SUGAR 600-U-68W-840	TYPE:Ceiling light	WEIGHT:
SPEC.:4000K	DIM.: φ600mm*H105mm	SERIAL No.:
MFR.: NEKO LIGHTING AG	SUR.:φ600mm	Shielding Angle:

Table--2

UNIT: cd

C (DEG) γ (DEG)	95	100	105	110	115	120	125	130	135	140	145	150	155	160	165	170	175	180	185
0	2933	2933	2933	2933	2933	2933	2933	2933	2933	2933	2933	2933	2933	2933	2933	2933	2933	2933	2933
5	2912	2911	2911	2911	2910	2910	2910	2910	2910	2910	2910	2911	2911	2912	2914	2915	2917	2919	2916
10	2891	2889	2887	2885	2882	2879	2876	2873	2870	2868	2866	2865	2865	2865	2866	2869	2872	2877	2871
15	2800	2799	2798	2798	2797	2797	2797	2798	2801	2802	2795	2789	2785	2782	2782	2785	2789	2796	2788
20	2708	2706	2703	2699	2695	2690	2685	2682	2679	2678	2679	2684	2677	2671	2668	2669	2674	2684	2672
25	2559	2557	2555	2553	2551	2552	2554	2555	2545	2538	2533	2533	2537	2536	2529	2528	2532	2543	2529
30	2409	2404	2396	2388	2380	2374	2371	2370	2374	2382	2376	2368	2365	2369	2365	2358	2360	2371	2359
35	2184	2179	2173	2167	2165	2170	2182	2172	2165	2164	2172	2180	2163	2154	2158	2145	2144	2158	2147
40	1956	1947	1932	1915	1899	1891	1889	1892	1911	1900	1878	1883	1913	1887	1884	1887	1881	1896	1881
45	1545	1534	1537	1550	1565	1575	1557	1518	1508	1504	1483	1483	1513	1527	1516	1531	1518	1543	1519
50	1126	1103	1110	1139	1164	1160	1132	1110	1103	1099	1093	1099	1105	1101	1094	1114	1126	1151	1105
55	842	823	830	838	825	778	729	759	793	790	770	765	754	746	734	778	811	822	764
60	563	563	588	587	566	555	540	541	554	555	544	528	541	542	550	569	569	582	574
65	419	424	435	419	393	396	390	371	384	393	403	392	381	376	376	374	344	355	371
70	280	295	300	295	289	289	284	261	264	266	266	268	275	272	275	279	287	280	268
75	195	206	205	201	200	196	192	176	182	186	175	185	186	171	181	184	169	181	184
80	111	118	116	116	120	116	116	106	106	106	98.1	103	99.4	95.3	94.5	86.4	92.6	103	97.4
85	0.42	1.78	3.86	6.77	10.8	14.6	19.4	22.3	24.8	27.8	27.8	26.4	25.8	24.7	21.5	17.5	13.5	19.4	19.0
90	93.0	92.0	0.00	0.00	88.8	87.8	87.3	86.8	86.4	85.6	84.9	84.2	83.8	83.6	83.5	83.5	83.4	83.1	81.8
95	121	119	118	117	117	116	115	114	114	113	113	112	112	111	111	110	110	110	109
100	147	146	145	145	144	144	143	143	142	141	140	139	139	138	137	137	136	136	135
105	175	175	174	174	174	174	173	172	172	171	170	169	168	167	166	165	164	164	163
110	206	205	205	205	205	206	205	204	203	202	201	199	198	197	196	195	194	193	192
115	238	237	237	237	238	239	238	237	236	234	232	231	229	227	226	225	224	224	223
120	273	272	271	272	273	274	273	271	270	268	266	264	262	260	259	258	257	257	255
125	308	307	307	308	309	309	309	307	305	303	300	298	296	295	293	293	292	291	290
130	342	341	341	342	343	344	341	338	335	334	333	332	330	329	327	327	326	325	324
135	374	373	372	372	371	371	369	368	366	366	365	364	362	361	360	359	358	357	356
140	403	402	401	401	400	400	398	397	396	395	394	393	392	391	390	389	388	387	386
145	429	428	428	427	426	426	425	424	422	422	421	420	419	418	417	416	415	415	414
150	452	451	450	450	449	449	448	447	446	445	444	444	443	442	440	440	439	439	438
155	470	470	469	469	468	468	467	466	465	465	464	463	463	462	461	460	460	459	458
160	485	485	484	484	484	483	483	482	481	481	480	480	479	478	478	477	477	476	476
165	497	496	496	496	495	495	495	494	494	493	493	492	492	491	491	490	490	490	489
170	504	504	504	504	503	503	503	502	502	502	502	501	501	501	500	500	500	500	499
175	508	508	508	508	508	507	507	507	507	507	507	507	506	506	506	506	506	506	505
180	508	508	508	508	508	508	508	508	508	508	508	508	508	508	508	508	508	508	508

C Range: 0 - 360DEG
C Interval: 5.0DEG
Test Speed: MEDIUM
Temperature:25.3DEG
Operators:Jason
Test Date:2019-11-28

γ Range: 0 - 180DEG
γ Interval: 0.5DEG
Test System:EVERFINE GO-2000_V1 SYSTEM V2.0.362
Humidity:65.0%
Test Distance:5.850m [K=1.7094]
Remarks:

LUMINOUS DISTRIBUTION INTENSITY DATA

Test:U:220.6V I:0.3134A P:69.12W PF:0.9856 Freq:49.90Hz Lamp Flux:7898.96x1 lm		
NAME: SUGAR 600-U-68W-840	TYPE:Ceiling light	WEIGHT:
SPEC.:4000K	DIM.: ϕ 600mm*H105mm	SERIAL No.:
MFR.: NEKO LIGHTING AG	SUR.: ϕ 600mm	Shielding Angle:

Table--3

UNIT: cd

C (DEG) γ (DEG)	190	195	200	205	210	215	220	225	230	235	240	245	250	255	260	265	270	275	280
0	2933	2933	2933	2933	2933	2933	2933	2933	2933	2933	2933	2933	2933	2933	2933	2933	2933	2933	2933
5	2914	2912	2910	2909	2907	2906	2906	2905	2905	2905	2905	2905	2905	2905	2906	2906	2907	2907	2908
10	2866	2863	2860	2859	2858	2858	2859	2861	2863	2865	2868	2870	2873	2875	2878	2879	2881	2881	2881
15	2782	2778	2776	2777	2779	2784	2789	2787	2783	2781	2780	2779	2779	2780	2780	2781	2783	2784	2786
20	2665	2662	2663	2667	2672	2667	2664	2663	2665	2667	2669	2672	2675	2678	2681	2683	2685	2686	2687
25	2522	2520	2525	2524	2520	2520	2524	2529	2537	2534	2530	2529	2528	2528	2528	2529	2531	2534	2536
30	2355	2359	2359	2353	2354	2362	2367	2354	2347	2347	2352	2359	2365	2369	2371	2374	2378	2381	2381
35	2151	2164	2154	2157	2169	2157	2142	2136	2138	2147	2141	2139	2137	2136	2136	2137	2140	2143	2145
40	1889	1884	1881	1904	1886	1880	1889	1885	1856	1850	1860	1871	1878	1884	1891	1898	1902	1902	1900
45	1531	1509	1507	1504	1506	1524	1528	1523	1510	1518	1535	1526	1515	1503	1490	1484	1487	1479	1473
50	1099	1113	1128	1125	1124	1108	1110	1133	1162	1152	1123	1095	1088	1091	1077	1067	1072	1050	1026
55	747	765	783	808	802	771	782	814	842	832	791	770	781	799	789	786	802	788	767
60	558	548	548	556	551	556	570	574	575	584	582	567	554	546	515	508	532	532	532
65	379	384	404	409	396	386	392	392	369	351	392	408	404	399	376	373	396	399	400
70	269	266	257	244	273	284	269	265	260	259	283	288	286	274	249	242	259	270	277
75	169	180	178	170	175	182	176	187	179	173	187	187	184	181	167	164	175	178	185
80	98.8	94.2	96.0	93.6	96.1	94.0	89.7	97.7	98.5	94.7	96.1	95.6	88.8	90.4	87.3	87.0	90.6	86.4	94.9
85	19.7	19.5	20.5	17.5	15.5	18.8	20.1	19.3	17.9	14.8	11.1	8.08	4.95	2.95	1.30	0.33	0.00	0.33	1.42
90	80.4	79.2	78.8	78.7	78.7	78.4	78.2	78.1	78.5	79.1	79.7	80.1	80.6	81.2	82.2	83.3	84.3	84.5	84.7
95	108	107	107	106	106	106	106	106	106	106	106	106	107	107	108	108	108	109	110
100	134	133	133	133	132	132	132	132	132	132	132	132	133	133	133	133	133	134	135
105	162	161	160	160	160	160	160	160	160	160	160	160	160	160	160	160	160	161	162
110	191	190	189	189	189	189	189	189	189	189	190	190	190	190	189	189	189	189	190
115	221	220	219	219	219	219	219	219	219	220	220	220	221	221	220	219	219	219	220
120	254	253	252	251	251	251	251	251	252	253	253	254	254	254	253	252	252	252	253
125	289	287	286	286	285	285	285	285	286	287	288	289	289	290	288	287	286	287	288
130	323	321	320	320	319	319	319	319	319	320	321	322	323	324	323	321	320	320	321
135	355	354	353	352	352	351	351	351	350	350	350	351	352	353	353	352	352	353	354
140	385	384	383	382	382	382	381	381	381	380	380	381	381	381	382	382	382	383	384
145	413	412	411	410	410	409	409	409	409	408	408	408	409	409	409	409	410	410	411
150	437	436	435	435	434	434	434	434	433	433	433	433	433	434	434	434	434	435	435
155	458	457	456	456	455	455	455	455	454	454	454	454	454	455	455	455	455	456	456
160	475	474	474	474	473	473	473	473	472	472	472	472	472	472	473	473	473	473	474
165	489	488	488	488	487	487	487	487	487	486	486	486	487	487	487	487	487	487	488
170	499	498	498	498	498	498	498	498	497	497	497	497	497	498	498	498	498	498	498
175	505	505	505	505	505	505	505	505	505	505	504	505	505	505	505	505	505	505	505
180	508	508	508	508	508	508	508	508	508	508	508	508	508	508	508	508	508	508	508

C Range: 0 - 360DEG
C Interval: 5.0DEG
Test Speed: MEDIUM
Temperature:25.3DEG
Operators:Jason
Test Date:2019-11-28

γ Range: 0 - 180DEG
 γ Interval: 0.5DEG
Test System:EVERFINE GO-2000_V1 SYSTEM V2.0.362
Humidity:65.0%
Test Distance:5.850m [K=1.7094]
Remarks:

LUMINOUS DISTRIBUTION INTENSITY DATA

Test:U:220.6V I:0.3134A P:69.12W PF:0.9856 Freq:49.90Hz Lamp Flux:7898.96x1 lm		
NAME: SUGAR 600-U-68W-840	TYPE:Ceiling light	WEIGHT:
SPEC.:4000K	DIM.: φ600mm*H105mm	SERIAL No.:
MFR.: NEKO LIGHTING AG	SUR.:φ600mm	Shielding Angle:

Table--4

UNIT: cd

C (DEG) γ (DEG)	285	290	295	300	305	310	315	320	325	330	335	340	345	350	355				
0	2933	2933	2933	2933	2933	2933	2933	2933	2933	2933	2933	2933	2933	2933	2933				
5	2908	2908	2909	2909	2910	2911	2911	2912	2913	2915	2916	2918	2919	2921	2924				
10	2881	2881	2880	2878	2877	2876	2875	2874	2874	2875	2877	2880	2883	2887					
15	2788	2790	2792	2795	2799	2803	2808	2813	2808	2805	2803	2803	2804	2808	2813				
20	2687	2687	2686	2685	2685	2685	2687	2691	2697	2706	2703	2698	2697	2699	2706				
25	2538	2539	2541	2545	2552	2557	2552	2551	2552	2557	2566	2570	2565	2565	2571				
30	2379	2374	2370	2368	2369	2372	2380	2394	2393	2391	2396	2407	2409	2403	2406				
35	2145	2144	2147	2159	2179	2175	2174	2177	2189	2201	2194	2197	2213	2201	2199				
40	1893	1879	1866	1863	1871	1886	1919	1915	1899	1906	1936	1924	1937	1949	1941				
45	1483	1502	1522	1534	1519	1493	1496	1515	1509	1502	1537	1559	1574	1619	1597				
50	1041	1085	1129	1137	1108	1080	1074	1095	1100	1125	1142	1138	1141	1181	1198				
55	774	791	799	768	720	742	780	784	774	788	786	780	765	824	869				
60	548	547	531	533	526	531	548	560	550	530	552	563	566	600	623				
65	406	387	357	370	381	371	384	393	406	396	388	387	399	397	375				
70	282	275	263	273	275	259	260	262	271	274	278	279	289	294	302				
75	187	185	180	184	181	169	179	183	178	187	190	183	194	201	186				
80	97.5	101	104	104	101	95.4	99.1	100	97.2	103	103	104	114	114	120				
85	3.21	5.85	9.18	12.6	16.1	18.5	20.8	22.6	22.6	20.7	23.2	26.3	29.0	29.9	31.7				
90	84.8	85.4	86.0	86.7	87.3	87.9	88.5	89.3	90.1	90.9	91.7	92.5	93.3	93.9	94.5				
95	110	111	111	112	112	113	114	115	115	116	117	118	119	119	120				
100	136	137	137	138	139	141	142	143	143	144	145	145	146	146	146				
105	163	164	166	167	168	170	171	172	173	174	175	175	175	175	175				
110	191	193	195	197	198	200	201	203	204	205	206	206	207	206	206				
115	222	223	225	227	229	231	232	234	236	237	238	238	238	238	238				
120	255	257	259	261	263	264	266	268	269	271	272	272	272	272	272				
125	289	291	293	296	298	299	301	302	302	303	305	306	307	307	307				
130	323	325	327	330	330	331	331	331	331	332	335	338	341	341	341				
135	355	356	357	357	359	360	361	362	363	364	365	367	368	369	370				
140	385	385	386	387	388	389	390	391	392	393	394	396	397	398	399				
145	412	412	413	414	415	416	417	418	418	419	420	422	423	424	425				
150	436	437	437	438	438	439	440	441	442	443	444	445	446	447	447				
155	457	457	458	458	459	460	461	461	462	462	463	464	465	466	466				
160	474	474	475	475	476	476	477	478	478	479	479	480	481	481	482				
165	488	488	489	489	489	490	490	491	491	491	492	493	493	494	494				
170	498	499	499	499	499	500	500	500	500	501	501	501	502	502	502				
175	505	505	505	505	505	506	506	506	506	506	506	507	507	507	507				
180	508	508	508	508	508	508	508	508	508	508	508	508	508	508	508				

C Range: 0 - 360DEG
C Interval: 5.0DEG
Test Speed: MEDIUM
Temperature:25.3DEG
Operators:Jason
Test Date:2019-11-28

γ Range: 0 - 180DEG
γ Interval: 0.5DEG
Test System:EVERFINE GO-2000_V1 SYSTEM V2.0.362
Humidity:65.0%
Test Distance:5.850m [K=1.7094]
Remarks: