

# NEKO / ROXY

## In-track Driver LED Tracklight



### ROXY Art

15W 950lm-1000lm

### ROXY S

15W 1200lm-1300lm  
21W 1600lm-1700lm

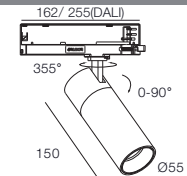


**! NEW**



# NEKO / ROXY Art

## In-track Driver LED Tracklight



15W CRI90 2700K 18° 24° 36° 3000K 4000K  
**CITIZEN** UGR < 19 IP20 5 YEARS GUARANTEE CB CE  
50,000h@L80B10



LED Power	System Power	LED Voltage	LED Current	CRI	CCT	Beam	LED Output	System Output	Code
13 W	15 W	36 V	350 mA	90	2700K	18°	1200lm	900lm	ROA1-9271815X-WB
						24°	1200lm	900lm	ROA1-9272515X-WB
						36°	1200lm	900lm	ROA1-9273615X-WB
						18°	1300lm	950lm	ROA1-9301815X-WB
						24°	1300lm	950lm	ROA1-9302515X-WB
						36°	1300lm	950lm	ROA1-9303615X-WB
						18°	1400lm	1000lm	ROA1-9401815X-WB
						24°	1400lm	1000lm	ROA1-9402515X-WB
						36°	1400lm	1000lm	ROA1-9403615X-WB



13 W	15 W	36 V	350 mA	90	2700K	18°	1200lm	900lm	ROA1-9271815X-BB
						24°	1200lm	900lm	ROA1-9272515X-BB
						36°	1200lm	900lm	ROA1-9273615X-BB
						18°	1300lm	950lm	ROA1-9301815X-BB
						24°	1300lm	950lm	ROA1-9302515X-BB
						36°	1300lm	950lm	ROA1-9303615X-BB
						18°	1400lm	1000lm	ROA1-9401815X-BB
						24°	1400lm	1000lm	ROA1-9402515X-BB
						36°	1400lm	1000lm	ROA1-9403615X-BB

Code Remark: X=F(ON-OFF) X=D(DALI Dim)

### Optional accessory



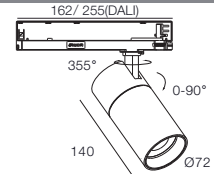
Honeycomb

Code for ROA1-930 1815X-WB with Honeycomb  
 ROA1-930 1815X-WB-H





### Track System



Compatible with GLOBAL / POWERGEAR 3-Circuit Track System.



15W 21W CRI90 2700K 3000K 4000K 15° 25° 30° CITIZEN 50,000h@L80B10 UGR < 19 IP20 5 YEARS GUARANTEE CB CE

	LED Power	System Power	LED Voltage	LED Current	CRI	CCT	Beam	LED Output	System Output	Code	
	13 W	15 W	36 V	350 mA	90	2700K	15°	1400lm	1100lm	ROS1-9271515X-WB	
							25°	1400lm	1100lm	ROS1-9272515X-WB	
							30°	1400lm	1100lm	ROS1-9273015X-WB	
							3000K	15°	1500lm	1200lm	ROS1-9301515X-WB
								25°	1500lm	1200lm	ROS1-9302515X-WB
								30°	1500lm	1200lm	ROS1-9303015X-WB
							4000K	15°	1600lm	1300lm	ROS1-9401515X-WB
								25°	1600lm	1300lm	ROS1-9402515X-WB
								30°	1600lm	1300lm	ROS1-9403015X-WB
		18 W	21 W	36 V	500 mA	90	2700K	15°	1900lm	1500lm	ROS2-9271521X-WB
								25°	1900lm	1500lm	ROS2-9272521X-WB
								30°	1900lm	1500lm	ROS2-9273021X-WB
							3000K	15°	2000lm	1600lm	ROS2-9301521X-WB
								25°	2000lm	1600lm	ROS2-9302521X-WB
								30°	2000lm	1600lm	ROS2-9303021X-WB
							4000K	15°	2100lm	1700lm	ROS2-9401821X-WB
								25°	2100lm	1700lm	ROS2-9402521X-WB
								30°	2100lm	1700lm	ROS2-9403621X-WB
		13 W	15 W	36 V	350 mA	90	2700K	15°	1400lm	1100lm	ROS1-9271515X-BB
								25°	1400lm	1100lm	ROS1-9272515X-BB
								30°	1400lm	1100lm	ROS1-9273015X-BB
							3000K	15°	1500lm	1200lm	ROS1-9301515X-BB
								25°	1500lm	1200lm	ROS1-9302515X-BB
								30°	1500lm	1200lm	ROS1-9303015X-BB
							4000K	15°	1600lm	1300lm	ROS1-9401515X-BB
								25°	1600lm	1300lm	ROS1-9402515X-BB
								30°	1600lm	1300lm	ROS1-9403015X-BB
		18 W	21 W	36 V	500 mA	90	2700K	15°	1900lm	1500lm	ROS2-9271521X-BB
								25°	1900lm	1500lm	ROS2-9272521X-BB
								30°	1900lm	1500lm	ROS2-9273021X-BB
							3000K	15°	2000lm	1600lm	ROS2-9301521X-BB
								25°	2000lm	1600lm	ROS2-9302521X-BB
								30°	2000lm	1600lm	ROS2-9303021X-BB
							4000K	15°	2100lm	1700lm	ROS2-9401821X-BB
								25°	2100lm	1700lm	ROS2-9402521X-BB
								30°	2100lm	1700lm	ROS2-9403621X-BB

Code Remark: X=F(ON-OFF) X=D(DALI Dim)

Optional accessory



Honeycomb

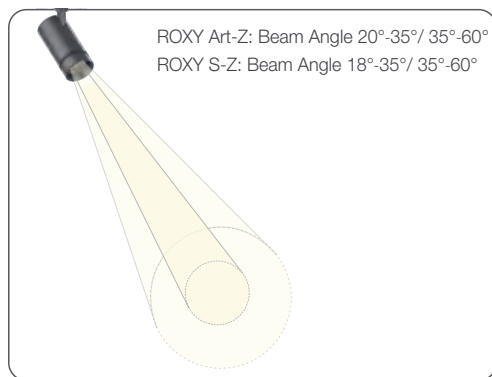
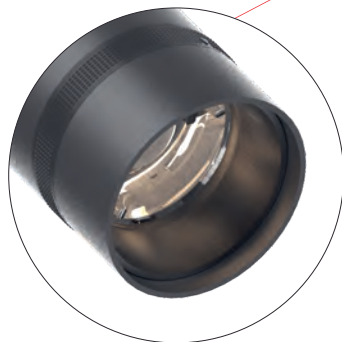
Code for ROS1-9302515X-WB with Honeycomb  
ROS1-9302515X-WB-H

Track System



Compatible with GLOBAL / POWERGEAR 3-Circuit Track System

**NEKO / ROXY-Z**  
In-track Driver LED Tracklight  
Beam Angle Zooming Version



←  
→  
18°-60° Zooming



**ROXY Art-Z**

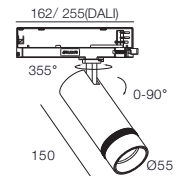
15W 1000lm-1200lm  
20°-35° Zooming  
35°-60° Zooming

**ROXY S-Z**

15W 1200lm-1400lm  
21W 1600lm-1800lm  
18°-35° Zooming  
35°-60° Zooming



**NEKO / ROXY Art-Z**  
**In-track Driver LED Tracklight**  
**Beam Angle Zooming Version**



15W CRI90 2700K 3000K 4000K 20°~35° 35°~60° CITIZEN 50,000h@L80B10 UGR < 19 IP 20 5 YEARS GUARANTEE CB CE



LED Power	System Power	LED Voltage	LED Current	CRI	CCT	Beam	LED Output	System Output	Code					
13 W	15 W	36 V	350 mA	90	2700K	20°~35°	1200lm	1000lm	ROA1-927Z315X-WB					
						3000K	1300lm	1100lm	ROA1-930Z315X-WB					
						4000K	1400lm	1200lm	ROA1-940Z315X-WB					
					2700K	35°~60°	1200lm	950lm	ROA1-927Z615X-WB					
						3000K	1300lm	1000lm	ROA1-930Z615X-WB					
						4000K	1400lm	1100lm	ROA1-940Z615X-WB					
					13 W	15 W	36 V	350 mA	90	2700K	20°~35°	1200lm	1000lm	ROA1-927Z315X-BB
											3000K	1300lm	1100lm	ROA1-930Z315X-BB
											4000K	1400lm	1200lm	ROA1-940Z315X-BB
2700K	35°~60°	1200lm	950lm	ROA1-927Z615X-BB										
	3000K	1300lm	1000lm	ROA1-930Z615X-BB										
	4000K	1400lm	1100lm	ROA1-940Z615X-BB										

Code Remark: X=F(ON-OFF) X=D(DALI Dim)

**Optional accessory**



Honeycomb

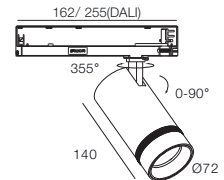
Code for ROA1-930Z315X-WB with Honeycomb  
 ROA1-930Z315X-WB-H

**Track System**



Compatible with GLOBAL / POWERGEAR 3-Circuit Track System

**NEKO / ROXY S-Z**  
In-track Driver LED Tracklight  
Beam Angle Zooming Version



15W 21W CRI90 2700K 3000K 4000K 18°~35° 35°~60° CITIZEN 50,000h@L80B10 UGR < 19 IP20 5 YEARS GUARANTEE CB CE



LED Power	System Power	LED Voltage	LED Current	CRI	CCT	Beam	LED Output	System Output	Code	
13 W	15 W	36 V	350 mA	90	2700K	18°~35°	1400lm	1200lm	ROS1-927Z315X-WB	
						3000K	18°~35°	1500lm	1300lm	ROS1-930Z315X-WB
						4000K	18°~35°	1600lm	1400lm	ROS1-940Z315X-WB
						2700K	35°~60°	1400lm	1100lm	ROS1-927Z615X-WB
						3000K	35°~60°	1500lm	1200lm	ROS1-930Z615X-WB
						4000K	35°~60°	1600lm	1300lm	ROS1-940Z615X-WB
18 W	21 W	36 V	500 mA	90	2700K	18°~35°	1900lm	1600lm	ROS2-927Z321X-WB	
						3000K	18°~35°	2000lm	1700lm	ROS2-930Z321X-WB
						4000K	18°~35°	2100lm	1800lm	ROS2-940Z321X-WB
						2700K	35°~60°	1900lm	1500lm	ROS2-927Z621X-WB
						3000K	35°~60°	2000lm	1600lm	ROS2-930Z621X-WB
						4000K	35°~60°	2100lm	1700lm	ROS2-940Z621X-WB



13 W	15 W	36 V	350 mA	90	2700K	18°~35°	1400lm	1200lm	ROS1-927Z315X-BB	
						3000K	18°~35°	1500lm	1300lm	ROS1-930Z315X-BB
						4000K	18°~35°	1600lm	1400lm	ROS1-940Z315X-BB
						2700K	35°~60°	1400lm	1100lm	ROS1-927Z615X-BB
						3000K	35°~60°	1500lm	1200lm	ROS1-930Z615X-BB
						4000K	35°~60°	1600lm	1300lm	ROS1-940Z615X-BB
18 W	21 W	36 V	500 mA	90	2700K	18°~35°	1900lm	1600lm	ROS2-927Z321X-BB	
						3000K	18°~35°	2000lm	1700lm	ROS2-930Z321X-BB
						4000K	18°~35°	2100lm	1800lm	ROS2-940Z321X-BB
						2700K	35°~60°	1900lm	1500lm	ROS2-927Z621X-BB
						3000K	35°~60°	2000lm	1600lm	ROS2-930Z621X-BB
						4000K	35°~60°	2100lm	1700lm	ROS2-940Z621X-BB

Code Remark: X=F(ON-OFF) X=D(DALI Dim)

Optional accessory



Code for ROS1-930 Z315X-WB with Honeycomb  
ROS1-930 Z315X-WB-H

Honeycomb

Track System



Compatible with GLOBAL / POWERGEAR 3-Circuit Track System