

Low Voltage Track System Module ML26-RT55-10W-927-20-40#40



| | | |
|---------------------|---------|--------------------------|
| Light Output Ratio: | 100.0% | |
| Luminaire Power: | 9.926 W | |
| SHR Nominal: | 0.50 | Calculated using the TM5 |
| SHR Maximum: | 0.60 | fine grid method. |

C Range: 0 - 360DEG
C Interval: 15.0DEG
Test Speed: HIGH
Temperature: 25.3DEG
Operators: Jason
Test Date: 2020-05-11

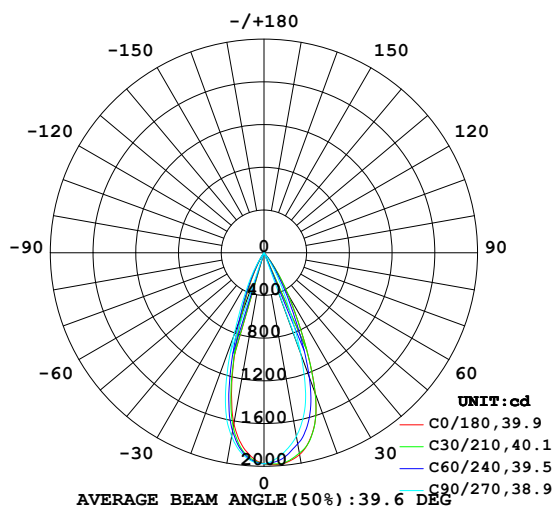
γ Range: 0 - 90DEG
γ Interval: 0.5DEG
Test System: EVERFINE GO-2000B_V1 SYSTEM V2.0.362
Humidity: 58%
Test Distance: 5.850m [K=1.0000]
Remarks:

LUMINAIRE PHOTOMETRIC TEST REPORT

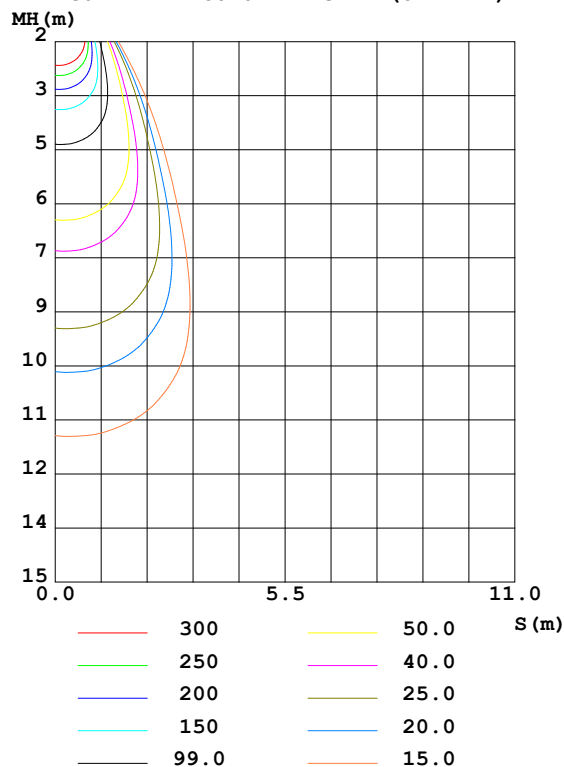
| | | |
|---|--------------------------------------|--|
| Test:U:48.00V I:0.2068A P:9.926W PF:1.000 Freq:0Hz Lamp Flux:869.585x1 lm | | |
| NAME: ML26-RT55-10W-927-20-40#40 | TYPE:Low Voltage Track System Module | |
| SPEC.:2700K | DIM.: ϕ 55mm*H150mm | |
| MFR.: NEKO LIGHTING AG | | |

| DATA OF LAMP | | PHOTOMETRIC DATA Eff: 87.60 lm/W | | | |
|-------------------|---------------|----------------------------------|--------|--------------------------|-----------|
| MODEL | CITIZEN-2700K | I _{max} (cd) | 1991 | S/MH (C0/180) | 0.51 |
| NOMINAL POWER (W) | 10 | LOR (%) | 100.0 | S/MH (C90/270) | 0.58 |
| RATED VOLTAGE (V) | 48 | TOTAL FLUX (lm) | 869.58 | η UP, DN (C0-180) | 0.0, 53.6 |
| NOMINAL FLUX (lm) | 869.585 | CIE CLASS | DIRECT | η UP, DN (C180-360) | 0.0, 46.4 |
| LAMPS INSIDE | 1 | η up (%) | 0.0 | CIBSE SHR NOM | 0.50 |
| TEST VOLTAGE (V) | 48 | η down (%) | 100.0 | CIBSE SHR MAX | 0.60 |

LUMINOUS INTENSITY DISTRIBUTION DIAGRAM



C0 PLANE ISOLUX DIAGRAM (UNIT:lx)



C Range: 0 - 360DEG
C Interval: 15.0DEG
Test Speed: HIGH
Temperature: 25.3DEG
Operators: Jason
Test Date: 2020-05-11

γ Range: 0 - 90DEG
 γ Interval: 0.5DEG
Test System: EVERFINE GO-2000B_V1 SYSTEM V2.0.362
Humidity: 58%
Test Distance: 5.850m [K=1.0000]
Remarks:

ZONAL FLUX DIAGRAM

ZONAL FLUX DIAGRAM:

| γ | C0 | C45 | C90 | C135 | C180 | C225 | C270 | C315 | γ | Φ zone | Φ total | %lum, lamp |
|----------|-----------------------|--------|--------|--------|--------|--------|--------|--------|----------|-------------|--------------|------------|
| 10 | 1919 | 1871 | 1746 | 1643 | 1626 | 1670 | 1746 | 1830 | 0- 10 | 177.9 | 177.9 | 20.5,20.5 |
| 20 | 1404 | 1346 | 1010 | 699.9 | 590.4 | 629.1 | 832.3 | 1147 | 10- 20 | 386.2 | 564.1 | 64.9,64.9 |
| 30 | 446.7 | 416.2 | 234.1 | 123.9 | 95.34 | 107.6 | 169.9 | 299.7 | 20- 30 | 242.0 | 806.0 | 92.7,92.7 |
| 40 | 47.52 | 37.69 | 9.105 | 5.961 | 4.592 | 5.851 | 6.660 | 21.57 | 30- 40 | 58.29 | 864.3 | 99.4,99.4 |
| 50 | 3.017 | 3.047 | 1.649 | 0.9474 | 0.7838 | 0.8605 | 1.366 | 1.946 | 40- 50 | 4.211 | 868.5 | 99.9,99.9 |
| 60 | 0.6388 | 0.6753 | 0.5777 | 0.2790 | 0.1636 | 0.2523 | 0.4626 | 0.5752 | 50- 60 | 0.7803 | 869.3 | 100,100 |
| 70 | 0.0898 | 0.0655 | 0.0656 | 0.0372 | 0.0306 | 0.0438 | 0.0306 | 0.0744 | 60- 70 | 0.1932 | 869.5 | 100,100 |
| 80 | 0.0415 | 0.0350 | 0.0394 | 0.0372 | 0.0284 | 0.0328 | 0.0262 | 0.0350 | 70- 80 | 0.0425 | 869.5 | 100,100 |
| 90 | 0.0372 | 0.0372 | 0.0372 | 0.0394 | 0.0284 | 0.0284 | 0.0262 | 0.0306 | 80- 90 | 0.0368 | 869.6 | 100,100 |
| 100 | | | | | | | | | 90-100 | | | |
| 110 | | | | | | | | | 100-110 | | | |
| 120 | | | | | | | | | 110-120 | | | |
| 130 | | | | | | | | | 120-130 | | | |
| 140 | | | | | | | | | 130-140 | | | |
| 150 | | | | | | | | | 140-150 | | | |
| 160 | | | | | | | | | 150-160 | | | |
| 170 | | | | | | | | | 160-170 | | | |
| 180 | | | | | | | | | 170-180 | | | |
| DEG | LUMINOUS INTENSITY:cd | | | | | | | | | UNIT:lm | | |

Conical surface Flux(90deg): 867.44 lm

%lum = 99.8%

%lamp = 99.8%

Conical surface Flux(120deg): 869.31 lm

%lum = 100.0%

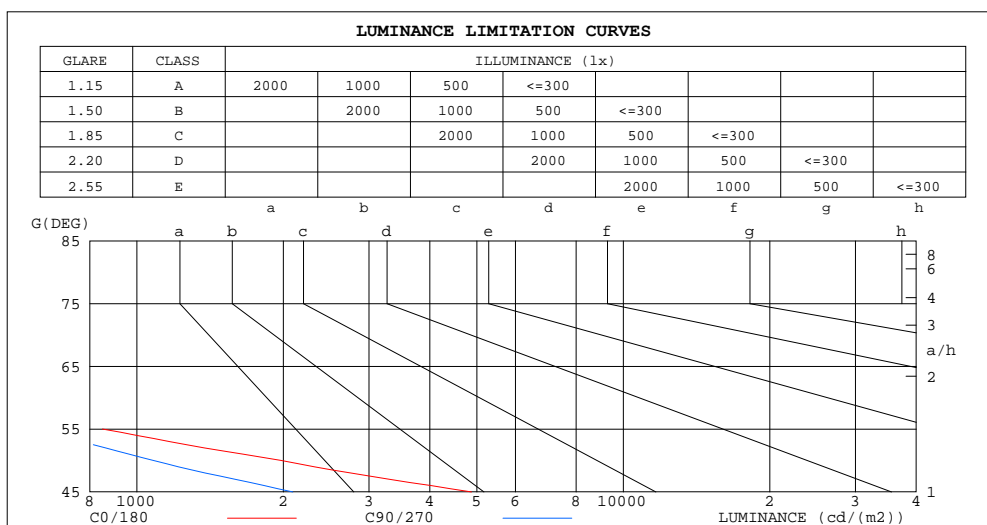
%lamp = 100.0%

C Range: 0 - 360DEG
C Interval: 15.0DEG
Test Speed: HIGH
Temperature:25.3DEG
Operators:Jason
Test Date:2020-05-11

γ Range: 0 - 90DEG
 γ Interval: 0.5DEG
Test System:EVERFINE GO-2000B_V1 SYSTEM V2.0.362
Humidity:58%
Test Distance:5.850m [K=1.0000]
Remarks:

LUMINANCE LIMITATION CURVES

| | | |
|---|--------------------------------------|--|
| Test:U:48.00V I:0.2068A P:9.926W PF:1.000 Freq:0Hz Lamp Flux:869.585x1 lm | | |
| NAME: ML26-RT55-10W-927-20-40#40 | TYPE:Low Voltage Track System Module | |
| SPEC.:2700K | DIM.: ϕ 55mm*H150mm | |
| MFR.: NEKO LIGHTING AG | | |



| LUMINANCE cd/(m2) | | |
|-------------------|--------|---------|
| G(DEG) | C0/180 | C90/270 |
| 85 | 180 | 180 |
| 80 | 101 | 95 |
| 75 | 89 | 78 |
| 70 | 111 | 81 |
| 65 | 367 | 153 |
| 60 | 538 | 487 |
| 55 | 850 | 586 |
| 50 | 1977 | 1081 |
| 45 | 4874 | 2091 |

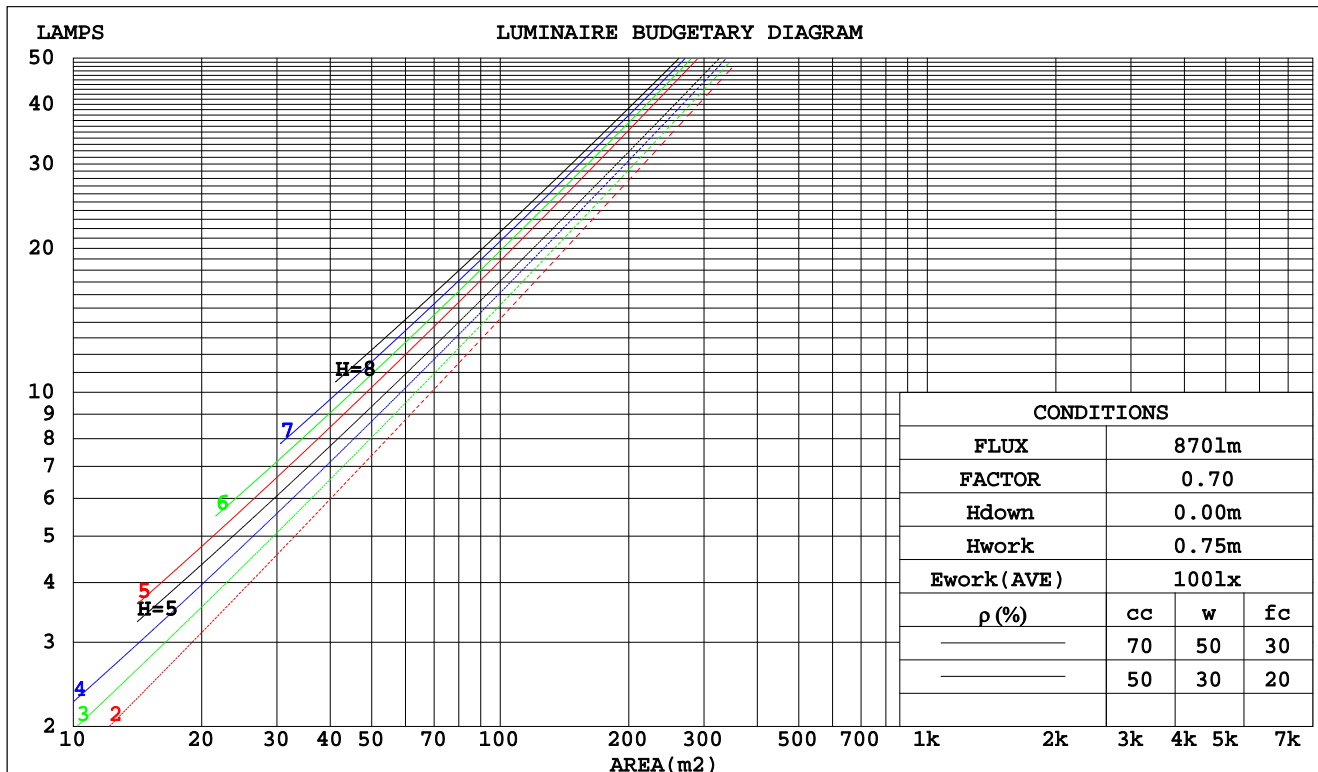
C Range: 0 - 360DEG
C Interval: 15.0DEG
Test Speed: HIGH
Temperature:25.3DEG
Operators:Jason
Test Date:2020-05-11

γ Range: 0 - 90DEG
 γ Interval: 0.5DEG
Test System:EVERFINE GO-2000B_V1 SYSTEM V2.0.362
Humidity:58%
Test Distance:5.850m [K=1.0000]
Remarks:

CU AND LUMINAIRE BUDGETARY ESTIMATE DIAGRAM

| | | |
|---|--------------------------------------|--|
| Test:U:48.00V I:0.2068A P:9.926W PF:1.000 Freq:0Hz Lamp Flux:869.585x1 lm | | |
| NAME: ML26-RT55-10W-927-20-40#40 | TYPE:Low Voltage Track System Module | |
| SPEC.:2700K | DIM.: ϕ 55mm*H150mm | |
| MFR.: NEKO LIGHTING AG | | |

| pcc | 80% | | | 70% | | | 50% | | | 30% | | | 10% | | | 0 |
|------|---------------------------------|------|------|------|------|------|------|------|------|------|------|------|------|------|------|-----|
| pw | 50% | 30% | 10% | 50% | 30% | 10% | 50% | 30% | 10% | 50% | 30% | 10% | 50% | 30% | 10% | 0 |
| pfc | 20% | | | 20% | | | 20% | | | 20% | | | 20% | | | 0 |
| RCR | Coefficients of Utilization(CU) | | | | | | | | | | | | | | | |
| 0.0 | 1.19 | 1.19 | 1.19 | 1.16 | 1.16 | 1.16 | 1.11 | 1.11 | 1.11 | 1.06 | 1.06 | 1.06 | 1.02 | 1.02 | 1.02 | .00 |
| 1.0 | 1.12 | 1.10 | 1.08 | 1.10 | 1.08 | 1.07 | 1.06 | 1.05 | 1.03 | 1.02 | 1.01 | 1.00 | .99 | .98 | .97 | .96 |
| 2.0 | 1.06 | 1.03 | 1.00 | 1.04 | 1.01 | .99 | 1.01 | .99 | .97 | .98 | .96 | .95 | .96 | .94 | .93 | .91 |
| 3.0 | 1.01 | .97 | .94 | .99 | .96 | .93 | .97 | .94 | .91 | .95 | .92 | .90 | .92 | .90 | .89 | .87 |
| 4.0 | .96 | .92 | .88 | .95 | .91 | .88 | .93 | .89 | .87 | .91 | .88 | .86 | .89 | .87 | .85 | .83 |
| 5.0 | .92 | .87 | .83 | .91 | .86 | .83 | .89 | .85 | .82 | .87 | .84 | .82 | .86 | .83 | .81 | .80 |
| 6.0 | .88 | .83 | .79 | .87 | .82 | .79 | .85 | .82 | .79 | .84 | .81 | .78 | .83 | .80 | .78 | .76 |
| 7.0 | .84 | .79 | .76 | .83 | .79 | .76 | .82 | .78 | .75 | .81 | .77 | .75 | .80 | .77 | .74 | .73 |
| 8.0 | .80 | .76 | .72 | .80 | .75 | .72 | .79 | .75 | .72 | .78 | .74 | .72 | .77 | .74 | .71 | .70 |
| 9.0 | .77 | .73 | .69 | .77 | .72 | .69 | .76 | .72 | .69 | .75 | .72 | .69 | .75 | .71 | .69 | .68 |
| 10.0 | .74 | .70 | .67 | .74 | .70 | .67 | .73 | .69 | .66 | .73 | .69 | .66 | .72 | .69 | .66 | .65 |



C Range: 0 - 360DEG
C Interval: 15.0DEG
Test Speed: HIGH
Temperature:25.3DEG
Operators:Jason
Test Date:2020-05-11

γ Range: 0 - 90DEG
 γ Interval: 0.5DEG
Test System:EVERFINE GO-2000B_V1 SYSTEM V2.0.362
Humidity:58%
Test Distance:5.850m [K=1.0000]
Remarks:

WEC AND CCEC

| | | |
|---|--------------------------------------|--|
| Test:U:48.00V I:0.2068A P:9.926W PF:1.000 Freq:0Hz Lamp Flux:869.585x1 lm | | |
| NAME: ML26-RT55-10W-927-20-40#40 | TYPE:Low Voltage Track System Module | |
| SPEC.:2700K | DIM.: \varnothing 55mm*H150mm | |
| MFR.: NEKO LIGHTING AG | | |

| ρ_{cc} | 80% | | | 70% | | | 50% | | | 30% | | | 10% | | | 0 |
|-------------|-----------------------|------|------|------|------|------|---------------------------------|------|------|------|------|------|------|------|------|---|
| ρ_w | 50% | 30% | 10% | 50% | 30% | 10% | 50% | 30% | 10% | 50% | 30% | 10% | 50% | 30% | 10% | 0 |
| ρ_{fc} | 20% | | | 20% | | | 20% | | | 20% | | | 20% | | | 0 |
| RCR | RCR:Room Cavity Ratio | | | | | | Wall Exitance Coefficients(WEC) | | | | | | | | | |
| 0.0 | | | | | | | | | | | | | | | | |
| 1.0 | .150 | .085 | .027 | .143 | .082 | .026 | .131 | .075 | .024 | .120 | .069 | .022 | .109 | .063 | .020 | |
| 2.0 | .141 | .077 | .024 | .135 | .075 | .023 | .125 | .069 | .022 | .115 | .065 | .020 | .107 | .060 | .019 | |
| 3.0 | .133 | .071 | .021 | .128 | .069 | .021 | .119 | .065 | .020 | .111 | .061 | .019 | .104 | .057 | .018 | |
| 4.0 | .125 | .065 | .019 | .121 | .064 | .019 | .114 | .060 | .018 | .107 | .058 | .017 | .101 | .055 | .017 | |
| 5.0 | .119 | .061 | .018 | .116 | .059 | .017 | .109 | .057 | .017 | .103 | .055 | .016 | .098 | .052 | .016 | |
| 6.0 | .113 | .057 | .016 | .111 | .056 | .016 | .105 | .054 | .016 | .100 | .052 | .015 | .095 | .050 | .015 | |
| 7.0 | .108 | .054 | .015 | .106 | .053 | .015 | .101 | .051 | .015 | .096 | .049 | .014 | .092 | .048 | .014 | |
| 8.0 | .104 | .051 | .014 | .102 | .050 | .014 | .097 | .049 | .014 | .093 | .047 | .014 | .089 | .046 | .013 | |
| 9.0 | .100 | .048 | .013 | .098 | .048 | .013 | .094 | .046 | .013 | .090 | .045 | .013 | .087 | .044 | .013 | |
| 10.0 | .096 | .046 | .013 | .094 | .045 | .013 | .091 | .044 | .013 | .087 | .043 | .012 | .084 | .042 | .012 | |

| ρ_{cc} | 80% | | | 70% | | | 50% | | | 30% | | | 10% | | | 0 |
|-------------|-----------------------|------|------|------|------|------|--|------|------|------|------|------|------|------|------|---|
| ρ_w | 50% | 30% | 10% | 50% | 30% | 10% | 50% | 30% | 10% | 50% | 30% | 10% | 50% | 30% | 10% | 0 |
| ρ_{fc} | 20% | | | 20% | | | 20% | | | 20% | | | 20% | | | 0 |
| RCR | RCR:Room Cavity Ratio | | | | | | Ceiling Cavity Exitance Coefficients(CCEC) | | | | | | | | | |
| 0.0 | .190 | .190 | .190 | .163 | .163 | .163 | .111 | .111 | .111 | .064 | .064 | .064 | .020 | .020 | .020 | |
| 1.0 | .169 | .158 | .147 | .145 | .135 | .127 | .099 | .093 | .087 | .057 | .054 | .051 | .018 | .017 | .016 | |
| 2.0 | .152 | .133 | .116 | .130 | .114 | .101 | .089 | .079 | .070 | .051 | .046 | .041 | .017 | .015 | .013 | |
| 3.0 | .138 | .113 | .094 | .118 | .098 | .081 | .081 | .068 | .057 | .047 | .040 | .034 | .015 | .013 | .011 | |
| 4.0 | .126 | .098 | .077 | .108 | .085 | .067 | .075 | .059 | .047 | .043 | .035 | .028 | .014 | .011 | .009 | |
| 5.0 | .117 | .086 | .064 | .100 | .075 | .055 | .069 | .052 | .039 | .040 | .031 | .023 | .013 | .010 | .008 | |
| 6.0 | .108 | .076 | .054 | .093 | .066 | .047 | .064 | .046 | .033 | .037 | .027 | .020 | .012 | .009 | .006 | |
| 7.0 | .101 | .069 | .046 | .087 | .059 | .040 | .060 | .042 | .028 | .035 | .025 | .017 | .011 | .008 | .006 | |
| 8.0 | .095 | .062 | .039 | .082 | .054 | .034 | .057 | .038 | .024 | .033 | .022 | .014 | .011 | .007 | .005 | |
| 9.0 | .090 | .057 | .034 | .077 | .049 | .030 | .054 | .034 | .021 | .031 | .020 | .013 | .010 | .007 | .004 | |
| 10.0 | .085 | .052 | .030 | .074 | .045 | .026 | .051 | .032 | .018 | .030 | .019 | .011 | .010 | .006 | .004 | |

C Range: 0 - 360DEG
C Interval: 15.0DEG
Test Speed: HIGH
Temperature:25.3DEG
Operators:Jason
Test Date:2020-05-11

γ Range: 0 - 90DEG
 γ Interval: 0.5DEG
Test System:EVERFINE GO-2000B_V1 SYSTEM V2.0.362
Humidity:58%
Test Distance:5.850m [K=1.0000]
Remarks:

UGR(Unified Glare Rating) Table

| | | | | | | | | | | |
|---|------------------|------|------|------|--------------------------------------|----------------|------|------|------|------|
| Test:U:48.00V I:0.2068A P:9.926W PF:1.000 Freq:0Hz Lamp Flux:869.585x1 lm | | | | | | | | | | |
| NAME: ML26-RT55-10W-927-20-40#40 | | | | | TYPE:Low Voltage Track System Module | | | | | |
| SPEC.:2700K | | | | | DIM.: ϕ 55mm*H150mm | | | | | |
| MFR.: NEKO LIGHTING AG | | | | | | | | | | |
| ceiling/cavity | 0.7 | 0.7 | 0.5 | 0.5 | 0.3 | 0.7 | 0.7 | 0.5 | 0.5 | 0.3 |
| walls | 0.5 | 0.3 | 0.5 | 0.3 | 0.3 | 0.5 | 0.3 | 0.5 | 0.3 | 0.3 |
| working plane | 0.2 | 0.2 | 0.2 | 0.2 | 0.2 | 0.2 | 0.2 | 0.2 | 0.2 | 0.2 |
| Room dimensions | Viewed crosswise | | | | | Viewed endwise | | | | |
| x = 2H y = 2H | 18.9 | 19.6 | 19.1 | 19.8 | 20.0 | 14.9 | 15.6 | 15.1 | 15.8 | 15.9 |
| 3H | 18.7 | 19.4 | 19.0 | 19.6 | 19.8 | 14.7 | 15.4 | 15.0 | 15.6 | 15.8 |
| 4H | 18.7 | 19.3 | 18.9 | 19.5 | 19.7 | 14.6 | 15.3 | 14.9 | 15.5 | 15.7 |
| 6H | 18.6 | 19.2 | 18.9 | 19.4 | 19.7 | 14.5 | 15.2 | 14.8 | 15.4 | 15.6 |
| 8H | 18.5 | 19.1 | 18.8 | 19.4 | 19.6 | 14.5 | 15.1 | 14.8 | 15.3 | 15.6 |
| 12H | 18.5 | 19.1 | 18.8 | 19.3 | 19.6 | 14.4 | 15.0 | 14.8 | 15.3 | 15.6 |
| 4H 2H | 18.7 | 19.3 | 18.9 | 19.5 | 19.7 | 14.6 | 15.3 | 14.9 | 15.5 | 15.7 |
| 3H | 18.5 | 19.1 | 18.8 | 19.3 | 19.6 | 14.4 | 15.0 | 14.8 | 15.3 | 15.6 |
| 4H | 18.4 | 18.9 | 18.7 | 19.2 | 19.5 | 14.4 | 14.9 | 14.7 | 15.2 | 15.5 |
| 6H | 18.3 | 18.7 | 18.7 | 19.1 | 19.4 | 14.3 | 14.7 | 14.6 | 15.0 | 15.4 |
| 8H | 18.2 | 18.7 | 18.6 | 19.0 | 19.4 | 14.2 | 14.6 | 14.6 | 15.0 | 15.3 |
| 12H | 18.2 | 18.6 | 18.6 | 18.9 | 19.3 | 14.1 | 14.5 | 14.6 | 14.9 | 15.3 |
| 8H 4H | 18.2 | 18.7 | 18.6 | 19.0 | 19.4 | 14.2 | 14.6 | 14.6 | 15.0 | 15.3 |
| 6H | 18.1 | 18.5 | 18.5 | 18.9 | 19.3 | 14.1 | 14.4 | 14.5 | 14.8 | 15.2 |
| 8H | 18.1 | 18.4 | 18.5 | 18.8 | 19.2 | 14.0 | 14.3 | 14.5 | 14.8 | 15.2 |
| 12H | 18.0 | 18.3 | 18.5 | 18.7 | 19.2 | 14.0 | 14.2 | 14.4 | 14.7 | 15.2 |
| 12H 4H | 18.2 | 18.6 | 18.6 | 18.9 | 19.3 | 14.1 | 14.5 | 14.6 | 14.9 | 15.3 |
| 6H | 18.1 | 18.4 | 18.5 | 18.8 | 19.2 | 14.0 | 14.3 | 14.5 | 14.8 | 15.2 |
| 8H | 18.0 | 18.3 | 18.5 | 18.7 | 19.2 | 14.0 | 14.2 | 14.4 | 14.7 | 15.2 |
| Variations with the observer position at spacings: | | | | | | | | | | |
| S = 1.0H | + 4.2 / -21.9 | | | | | + 3.4 / -15.4 | | | | |
| 1.5H | + 7.0 / -19.3 | | | | | + 6.0 / -12.4 | | | | |
| 2.0H | + 6.6 / - 7.0 | | | | | + 4.9 / - 4.7 | | | | |

CIE Pub.117, 869.6 lm Total Lamp Luminous Flux Correct ($8\log(F/F_0) = -0.5$)

C Range: 0 - 360DEG
C Interval: 15.0DEG
Test Speed: HIGH
Temperature:25.3DEG
Operators:Jason
Test Date:2020-05-11

γ Range: 0 - 90DEG
 γ Interval: 0.5DEG
Test System:EVERFINE GO-2000B_V1 SYSTEM V2.0.362
Humidity:58%
Test Distance:5.850m [K=1.0000]
Remarks:

UTILIZATION FACTORS TABLE

| | | |
|---|--|--|
| Test:U:48.00V I:0.2068A P:9.926W PF:1.000 Freq:0Hz Lamp Flux:869.585x1 lm | | |
| NAME: ML26-RT55-10W-927-20-40#40 | TYPE:Low Voltage Track System Module | |
| SPEC.:2700K | DIM.: $\varnothing 55\text{mm} \times H150\text{mm}$ | |
| MFR.: NEKO LIGHTING AG | | |

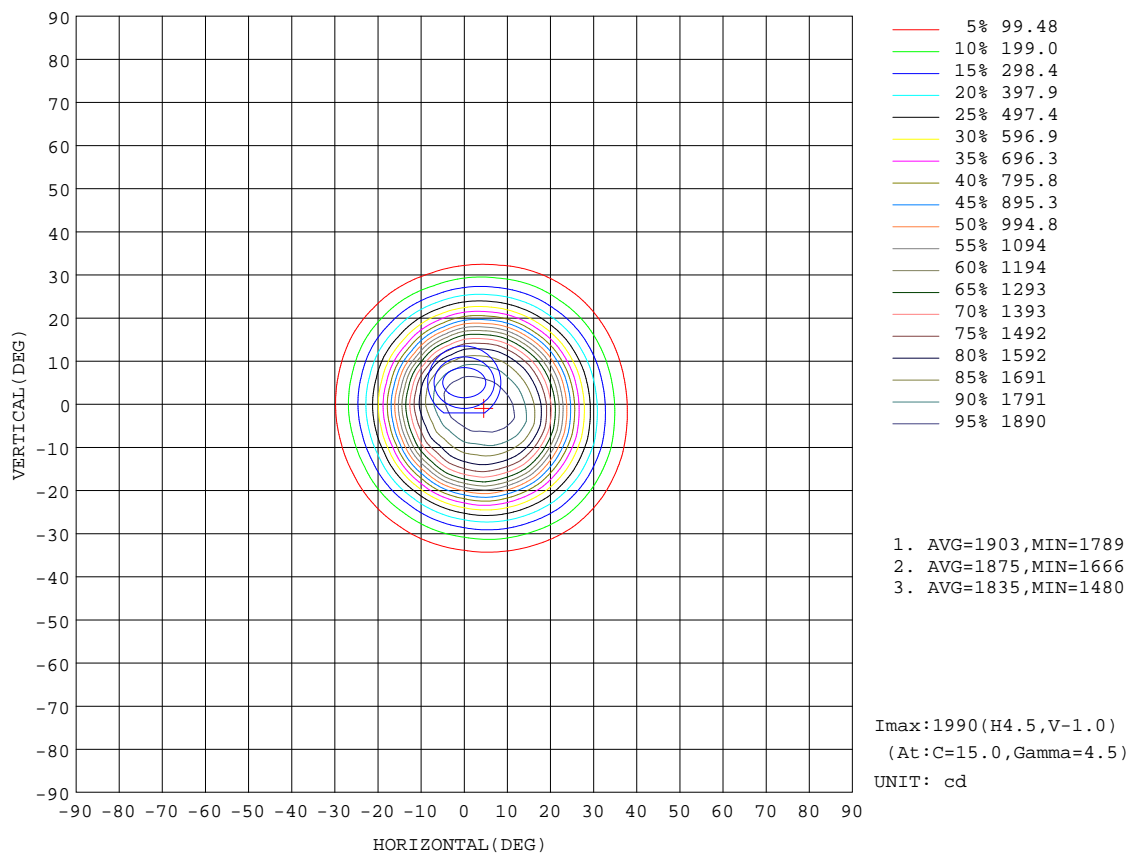
| REFLECTANCE | | | | | | | | | | |
|----------------------------------|---|-----|-----------|-----|-----|-----|-----|---------------|-----|--------|
| Ceiling | 0.8 | 0.8 | 0.8 | 0.7 | 0.7 | 0.7 | 0.5 | 0.5 | 0.5 | 0 |
| Walls | 0.7 | 0.5 | 0.3 | 0.7 | 0.5 | 0.3 | 0.7 | 0.5 | 0.3 | 0 |
| Working plane | 0.2 | 0.2 | 0.2 | 0.2 | 0.2 | 0.2 | 0.2 | 0.2 | 0.2 | 0 |
| ROOM INDEX | UTILIZATION FACTORS(PERCENT) $k(RI) \times RCR = 5$ | | | | | | | | | |
| $k = 0.60$ | 91 | 86 | 82 | 91 | 85 | 82 | 90 | 85 | 82 | 79 |
| 0.80 | 98 | 93 | 90 | 97 | 93 | 90 | 96 | 92 | 89 | 86 |
| 1.00 | 102 | 97 | 94 | 101 | 96 | 93 | 100 | 96 | 93 | 89 |
| 1.25 | 105 | 101 | 98 | 104 | 100 | 97 | 102 | 99 | 97 | 93 |
| 1.50 | 108 | 104 | 101 | 107 | 103 | 100 | 104 | 101 | 99 | 95 |
| 2.00 | 110 | 106 | 103 | 109 | 105 | 103 | 106 | 103 | 101 | 96 |
| 2.50 | 111 | 108 | 105 | 110 | 107 | 104 | 107 | 104 | 102 | 97 |
| 3.00 | 113 | 110 | 107 | 111 | 108 | 106 | 108 | 106 | 104 | 98 |
| 4.00 | 115 | 112 | 110 | 113 | 110 | 109 | 109 | 107 | 106 | 99 |
| 5.00 | 116 | 114 | 112 | 114 | 112 | 111 | 110 | 109 | 107 | 100 |
| ROOM INDEX | UF(total) | | | | | | | | | Direct |
| According to DIN EN 13032-2 2004 | | | Suspended | | | | | SHRNOM = 1.25 | | |

C Range: 0 - 360DEG
 C Interval: 15.0DEG
 Test Speed: HIGH
 Temperature:25.3DEG
 Operators:Jason
 Test Date:2020-05-11

γ Range: 0 - 90DEG
 γ Interval: 0.5DEG
 Test System:EVERFINE GO-2000B_V1 SYSTEM V2.0.362
 Humidity:58%
 Test Distance:5.850m [K=1.0000]
 Remarks:

ISOCANDELA DIAGRAM

| | | |
|---|--------------------------------------|--|
| Test:U:48.00V I:0.2068A P:9.926W PF:1.000 Freq:0Hz Lamp Flux:869.585x1 lm | | |
| NAME: ML26-RT55-10W-927-20-40#40 | TYPE:Low Voltage Track System Module | |
| SPEC.:2700K | DIM.: ϕ 55mm*H150mm | |
| MFR.: NEKO LIGHTING AG | | |



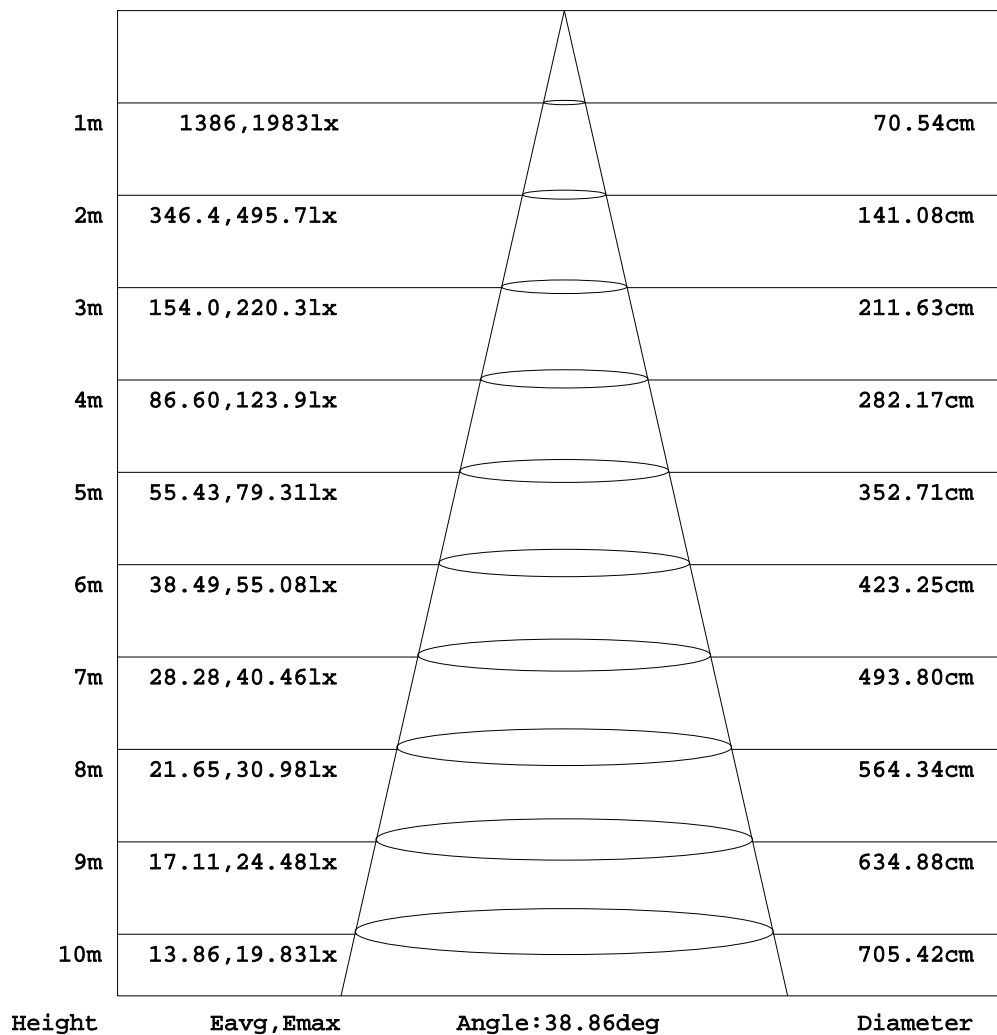
C Range: 0 - 360DEG
C Interval: 15.0DEG
Test Speed: HIGH
Temperature:25.3DEG
Operators:Jason
Test Date:2020-05-11

γ Range: 0 - 90DEG
 γ Interval: 0.5DEG
Test System:EVERFINE GO-2000B_V1 SYSTEM V2.0.362
Humidity:58%
Test Distance:5.850m [K=1.0000]
Remarks:

AAI Figure

| | | |
|---|--------------------------------------|--|
| Test:U:48.00V I:0.2068A P:9.926W PF:1.000 Freq:0Hz Lamp Flux:869.585x1 lm | | |
| NAME: ML26-RT55-10W-927-20-40#40 | TYPE:Low Voltage Track System Module | |
| SPEC.:2700K | DIM.: ϕ 55mm*H150mm | |
| MFR.: NEKO LIGHTING AG | | |

Flux out:545.9 lm



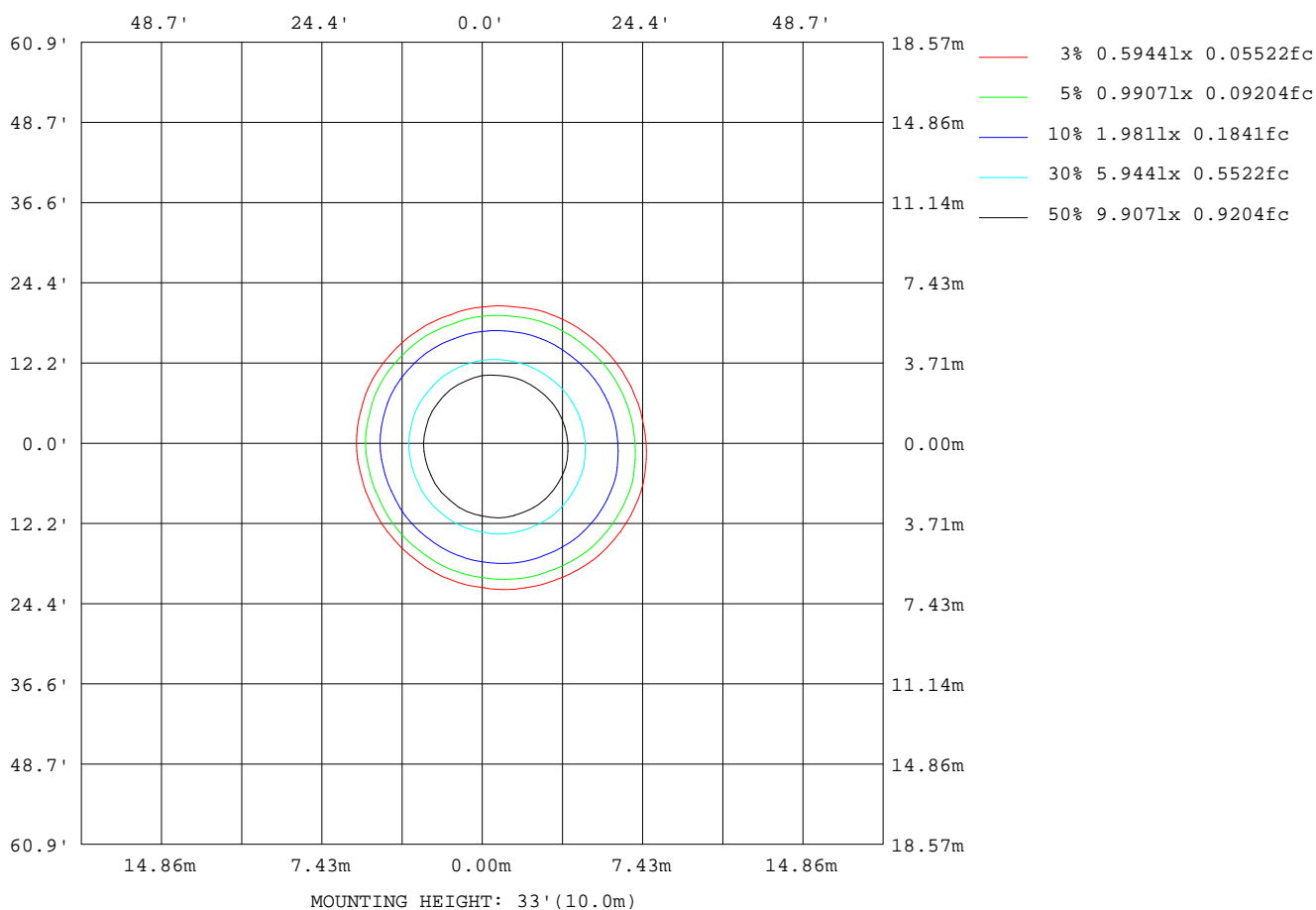
Note:The Curves indicate the illuminated area and the average illumination when the luminaire is at different distance.

C Range: 0 - 360DEG
C Interval: 15.0DEG
Test Speed: HIGH
Temperature:25.3DEG
Operators:Jason
Test Date:2020-05-11

γ Range: 0 - 90DEG
 γ Interval: 0.5DEG
Test System:EVERFINE GO-2000B_V1 SYSTEM V2.0.362
Humidity:58%
Test Distance:5.850m [K=1.0000]
Remarks:

ISOLUX DIAGRAM

| | | |
|---|--------------------------------------|--|
| Test:U:48.00V I:0.2068A P:9.926W PF:1.000 Freq:0Hz Lamp Flux:869.585x1 lm | | |
| NAME: ML26-RT55-10W-927-20-40#40 | TYPE:Low Voltage Track System Module | |
| SPEC.:2700K | DIM.: ϕ 55mm*H150mm | |
| MFR.: NEKO LIGHTING AG | | |



C Range: 0 - 360DEG
C Interval: 15.0DEG
Test Speed: HIGH
Temperature:25.3DEG
Operators:Jason
Test Date:2020-05-11

γ Range: 0 - 90DEG
 γ Interval: 0.5DEG
Test System:EVERFINE GO-2000B_V1 SYSTEM V2.0.362
Humidity:58%
Test Distance:5.850m [K=1.0000]
Remarks:

LED Avg.L Report

| | | |
|---|--------------------------------------|--|
| Test:U:48.00V I:0.2068A P:9.926W PF:1.000 Freq:0Hz Lamp Flux:869.585x1 lm | | |
| NAME: ML26-RT55-10W-927-20-40#40 | TYPE:Low Voltage Track System Module | |
| SPEC.:2700K | DIM.: ϕ 55mm*H150mm | |
| MFR.: NEKO LIGHTING AG | | |

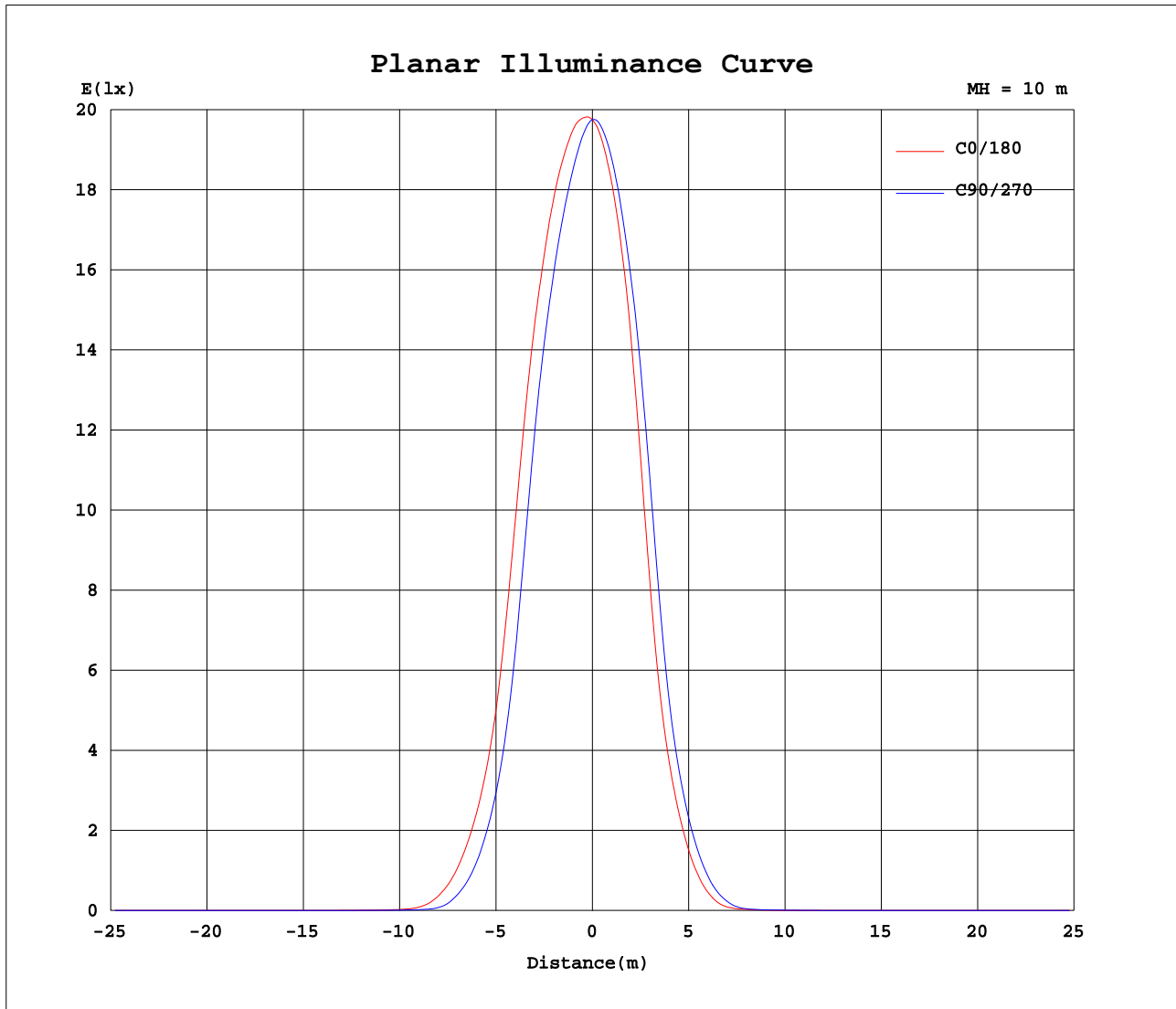
| AvgL | cd/m2 |
|------------------|-------|
| L_0~180 (65) av | 204 |
| L_0~180 (75) av | 68 |
| L_0~180 (85) av | 158 |
| L_90~270 (65) av | 113 |
| L_90~270 (75) av | 60 |
| L_90~270 (85) av | 153 |
| L_45 (65) av | 182 |
| L_45 (75) av | 61 |
| L_45 (85) av | 172 |

Standard: GB/T 29293-2012

C Range: 0 - 360DEG
C Interval: 15.0DEG
Test Speed: HIGH
Temperature:25.3DEG
Operators:Jason
Test Date:2020-05-11

γ Range: 0 - 90DEG
 γ Interval: 0.5DEG
Test System:EVERFINE GO-2000B_V1 SYSTEM V2.0.362
Humidity:58%
Test Distance:5.850m [K=1.0000]
Remarks:

Planar Illuminance Curve



C Range: 0 - 360DEG
C Interval: 15.0DEG
Test Speed: HIGH
Temperature: 25.3DEG
Operators: Jason
Test Date: 2020-05-11

γ Range: 0 - 90DEG
 γ Interval: 0.5DEG
Test System: EVERFINE GO-2000B_V1 SYSTEM V2.0.362
Humidity: 58%
Test Distance: 5.850m [K=1.0000]
Remarks:

```

γ Range: 0 - 90DEG
γ Interval: 0.5DEG
Test System:EVERFINE GO-2000B_V1 SYSTEM V2.0.362
Humidity:58%
Test Distance:5.850m [K=1.0000]
Remarks:

```

```

γ Range: 0 - 90DEG
γ Interval: 0.5DEG
Test System:EVERFINE GO-2000B_V1 SYSTEM V2.0.362
Humidity:58%
Test Distance:5.850m [K=1.0000]
Remarks:

```