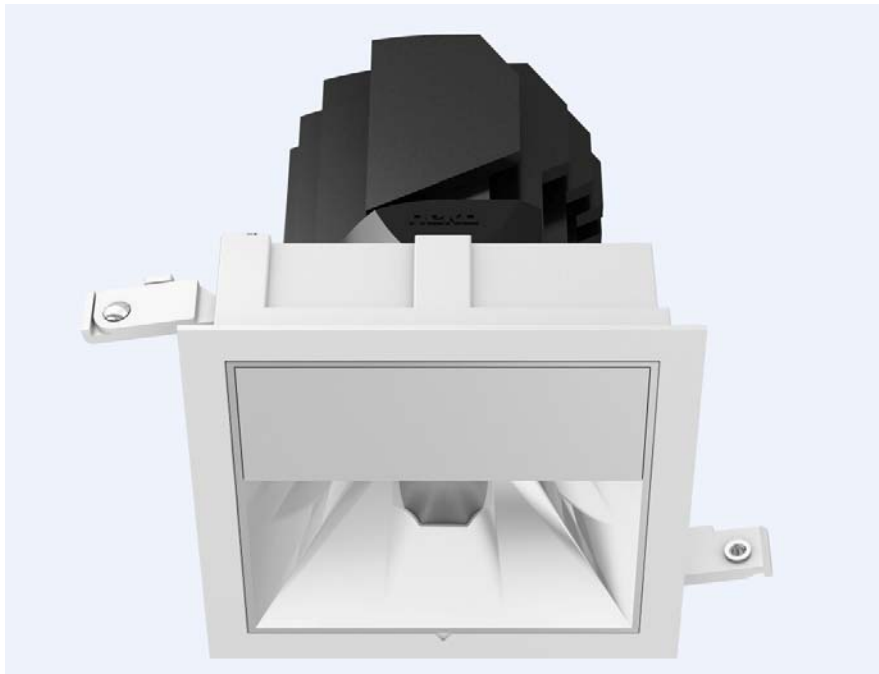


LED Downlight SENSE Series S125S3-18W-930



Light Output Ratio:	100.0%	
Luminaire Power:	19.47 W	
SHR Nominal:	1.00	Calculated using the TM5
SHR Maximum:	1.00	fine grid method.

C Range: 0 - 360DEG
C Interval: 15.0DEG
Test Speed: HIGH
Temperature: 25.3DEG
Operators: Meng Yongjian
Test Date: 2017-07-17

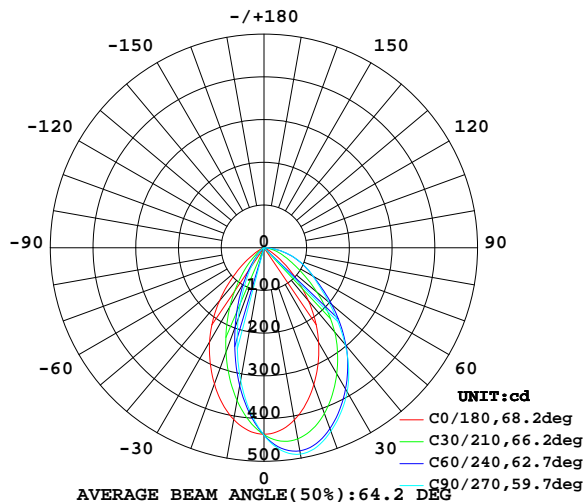
γ Range: 0 - 90DEG
 γ Interval: 1.0DEG
Test System: EVERFINE GO-2000B_V1 SYSTEM V2.0.288
Humidity: 52%
Test Distance: 5.850m [K=1.0000]
Remarks:

LUMINAIRE PHOTOMETRIC TEST REPORT

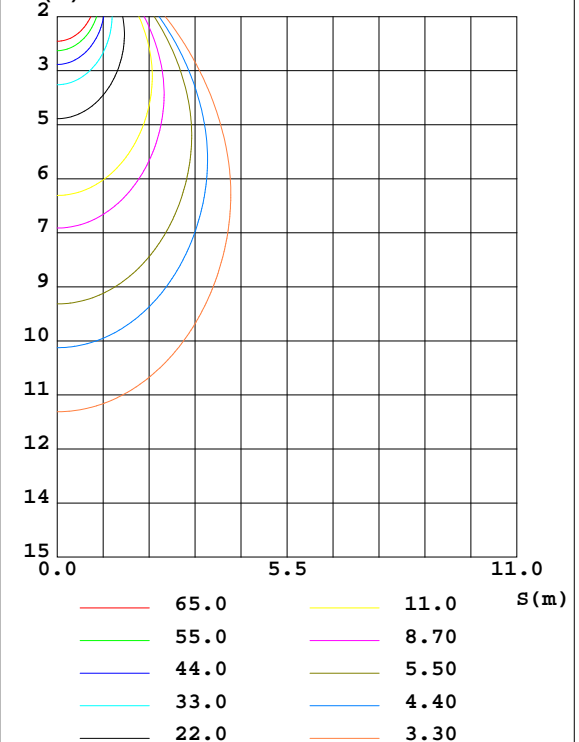
Test:U:220.7V I:0.0936A P:19.47W PF:0.9422 Lamp Flux:630x1 lm		
NAME: S125S3-18W-930	TYPE:Downlight	SERIAL No.:
SPEC.:3000K	DIM.: L135mm*W135mm*H157mm	
MFR.: NEKO LIGHTING AG		

DATA OF LAMP		PHOTOMETRIC DATA Eff: 32.35 lm/W			
MODEL	CITIZEN-3000K	I _{max} (cd)	490.5	S/MH(C0/180)	0.95
NOMINAL POWER(W)	21	LOR(%)	100.0	S/MH(C90/270)	0.54
RATED VOLTAGE(V)	220	TOTAL FLUX(lm)	630.00	η UP,DN(C0-180)	0.0,75.1
NOMINAL FLUX(lm)	630	CIE CLASS	DIRECT	η UP,DN(C180-360)	0.0,24.9
LAMPS INSIDE	1	η up(%)	0.0	CIBSE SHR NOM	1.00
TEST VOLTAGE(V)	220	η down(%)	100.0	CIBSE SHR MAX	1.00

LUMINOUS INTENSITY DISTRIBUTION DIAGRAM



C0 PLANE ISOLUX DIAGRAM (UNIT:lx)



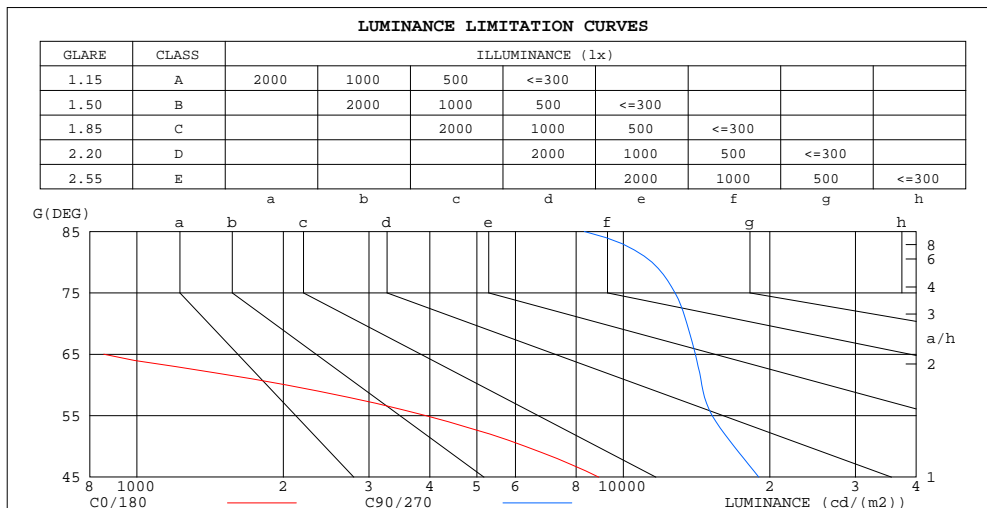
C Range: 0 - 360DEG
 C Interval: 15.0DEG
 Test Speed: HIGH
 Temperature:25.3DEG
 Operators:Meng Yongjian
 Test Date:2017-07-17

γ Range: 0 - 90DEG
 γ Interval: 1.0DEG
 Test System:EVERFINE GO-2000B_V1 SYSTEM V2.0.288
 Humidity:52%
 Test Distance:5.850m [K=1.0000]
 Remarks:

**ZONAL FLUX DIAGRAM
AND LUMINANCE LIMITATION CURVES**

ZONAL FLUX DIAGRAM:

γ	C0	C45	C90	C135	C180	C225	C270	C315	γ	Φ zone	Φ total	Φ lum, lamp
10	409.4	471.3	490.4	468.2	408.4	342.1	315.0	346.7	0- 10	40.33	40.33	6.4,6.4
20	341.2	437.8	457.2	430.8	339.4	223.2	176.8	227.4	10- 20	103.8	144.1	22.9,22.9
30	255.9	368.5	389.3	360.2	254.9	120.6	78.56	123.2	20- 30	131.4	275.5	43.7,43.7
40	161.6	288.2	295.7	280.9	161.8	46.76	27.90	48.10	30- 40	126.8	402.3	63.9,63.9
50	73.68	200.3	197.9	192.8	74.92	10.36	11.34	10.66	40- 50	98.72	501.0	79.5,79.5
60	18.47	117.9	132.1	113.5	20.89	2.836	3.503	2.945	50- 60	63.69	564.7	89.6,89.6
70	3.382	70.72	84.23	69.44	4.321	1.262	1.287	1.297	60- 70	38.82	603.5	95.8,95.8
80	0.5175	30.41	36.24	29.57	0.6498	0.5448	0.5549	0.5929	70- 80	21.43	625.0	99.2,99.2
90	0.0831	0.0853	0.0831	0.1771	0.0765	0.1924	0.2340	0.2536	80- 90	5.046	630.0	100,100
100									90-100			
110									100-110			
120									110-120			
130									120-130			
140									130-140			
150									140-150			
160									150-160			
170									160-170			
180									170-180			
DEG	LUMINOUS INTENSITY:cd									UNIT:lm		



LUMINANCE cd/(m²)		
G(°)	C0/180	C90/270
85	117	8310
80	164	11450
75	315	12774
70	542	13513
65	855	14063
60	2027	14498
55	3930	15232
50	6290	16890
45	8898	18988

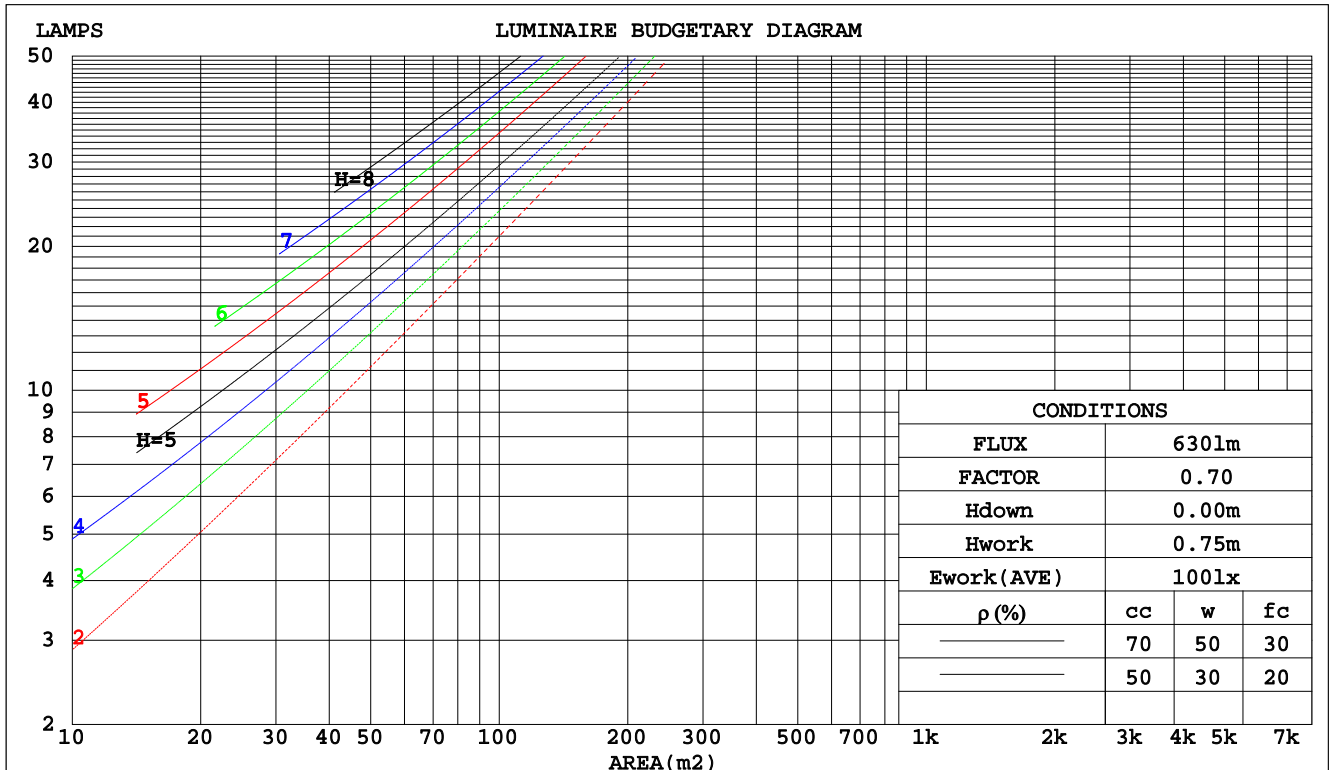
C Range: 0 - 360DEG
C Interval: 15.0DEG
Test Speed: HIGH
Temperature: 25.3DEG
Operators: Meng Yongjian
Test Date: 2017-07-17

γ Range: 0 - 90DEG
 γ Interval: 1.0DEG
Test System: EVERFINE GO-2000B_V1 SYSTEM V2.0.288
Humidity: 52%
Test Distance: 5.850m [K=1.0000]
Remarks:

CU AND LUMINAIRE BUDGETARY ESTIMATE DIAGRAM

Test:U:220.7V I:0.0936A P:19.47W PF:0.9422 Lamp Flux:630x1 lm		
NAME: S125S3-18W-930	TYPE:Downlight	SERIAL No.:
SPEC.:3000K	DIM.: L135mm*W135mm*H157mm	
MFR.: NEKO LIGHTING AG		

pcc	80%			70%			50%			30%			10%			0
pw	50%	30%	10%	50%	30%	10%	50%	30%	10%	50%	30%	10%	50%	30%	10%	0
pfc	20%			20%			20%			20%			20%			0
RCR	RCR:Room Cavity Ratio						Coefficients of Utilization(CU)									
0.0	1.19	1.19	1.19	1.16	1.16	1.16	1.11	1.11	1.11	1.06	1.06	1.06	1.02	1.02	1.02	1.00
1.0	1.07	1.04	1.01	1.05	1.02	.99	1.01	.98	.96	.97	.95	.93	.93	.92	.90	.88
2.0	.96	.91	.86	.94	.89	.85	.91	.87	.83	.88	.84	.81	.85	.82	.79	.78
3.0	.87	.80	.75	.85	.79	.74	.82	.77	.73	.80	.75	.72	.77	.74	.70	.68
4.0	.79	.71	.66	.78	.71	.65	.75	.69	.64	.73	.68	.64	.71	.67	.63	.61
5.0	.72	.64	.59	.71	.64	.58	.69	.63	.58	.67	.61	.57	.65	.60	.57	.55
6.0	.66	.58	.53	.65	.58	.52	.63	.57	.52	.62	.56	.52	.60	.55	.51	.49
7.0	.61	.53	.48	.60	.53	.48	.59	.52	.47	.57	.51	.47	.56	.51	.47	.45
8.0	.56	.49	.44	.56	.48	.44	.54	.48	.43	.53	.47	.43	.52	.47	.43	.41
9.0	.52	.45	.40	.52	.45	.40	.51	.44	.40	.50	.44	.40	.49	.43	.39	.38
10.0	.49	.42	.37	.48	.42	.37	.47	.41	.37	.47	.41	.37	.46	.40	.37	.35



C Range: 0 - 360DEG
C Interval: 15.0DEG
Test Speed: HIGH
Temperature:25.3DEG
Operators:Meng Yongjian
Test Date:2017-07-17

γ Range: 0 - 90DEG
γ Interval: 1.0DEG
Test System:EVERFINE GO-2000B_V1 SYSTEM V2.0.288
Humidity:52%
Test Distance:5.850m [K=1.0000]
Remarks:

WEC AND CCEC

Test:U:220.7V I:0.0936A P:19.47W PF:0.9422 Lamp Flux:630x1 lm		
NAME: S125S3-18W-930	TYPE:Downlight	SERIAL No.:
SPEC.:3000K	DIM.: L135mm*W135mm*H157mm	
MFR.: NEKO LIGHTING AG		

pcc	80%			70%			50%			30%			10%			0	
pw	50%	30%	10%	50%	30%	10%	50%	30%	10%	50%	30%	10%	50%	30%	10%	0	
pfc	20%			20%			20%			20%			20%			0	
RCR	RCR:Room Cavity Ratio						Wall Exitance Coefficients(WEC)										
0.0																	
1.0	.247	.141	.045	.241	.137	.044	.228	.131	.042	.216	.124	.040	.205	.119	.038		
2.0	.236	.130	.040	.230	.127	.039	.219	.122	.038	.209	.117	.037	.199	.113	.036		
3.0	.222	.118	.035	.217	.116	.035	.207	.112	.034	.198	.109	.033	.190	.105	.033		
4.0	.208	.108	.032	.204	.107	.031	.195	.103	.031	.187	.100	.030	.180	.098	.030		
5.0	.195	.099	.029	.191	.098	.029	.183	.096	.028	.176	.093	.028	.170	.091	.027		
6.0	.183	.092	.026	.180	.091	.026	.173	.089	.026	.167	.087	.025	.161	.085	.025		
7.0	.172	.085	.024	.169	.084	.024	.163	.082	.024	.158	.081	.024	.152	.079	.023		
8.0	.163	.079	.022	.160	.079	.022	.154	.077	.022	.149	.076	.022	.145	.074	.022		
9.0	.154	.074	.021	.151	.074	.021	.146	.072	.021	.142	.071	.020	.137	.070	.020		
10.0	.146	.070	.019	.143	.069	.019	.139	.068	.019	.135	.067	.019	.131	.066	.019		

pcc	80%			70%			50%			30%			10%			0
pw	50%	30%	10%	50%	30%	10%	50%	30%	10%	50%	30%	10%	50%	30%	10%	0
pfc	20%			20%			20%			20%			20%			0
RCR	RCR:Room Cavity Ratio						Ceiling Cavity Exitance Coefficients(CCEC)									
0.0	.190	.190	.190	.163	.163	.163	.111	.111	.111	.064	.064	.064	.020	.020	.020	
1.0	.176	.157	.139	.151	.134	.120	.103	.093	.083	.059	.054	.048	.019	.017	.016	
2.0	.165	.132	.105	.141	.114	.091	.097	.079	.063	.056	.046	.037	.018	.015	.012	
3.0	.155	.114	.081	.133	.098	.070	.091	.068	.049	.053	.040	.029	.017	.013	.010	
4.0	.147	.100	.064	.126	.086	.056	.087	.060	.039	.050	.035	.023	.016	.011	.008	
5.0	.139	.089	.052	.119	.077	.046	.082	.054	.032	.048	.032	.019	.015	.010	.006	
6.0	.132	.080	.044	.113	.070	.038	.078	.049	.027	.045	.029	.016	.015	.009	.005	
7.0	.125	.073	.037	.108	.064	.032	.075	.045	.023	.043	.026	.014	.014	.009	.004	
8.0	.119	.067	.032	.103	.058	.028	.071	.041	.020	.041	.024	.012	.013	.008	.004	
9.0	.114	.062	.028	.098	.054	.024	.068	.038	.017	.040	.022	.010	.013	.007	.003	
10.0	.109	.058	.024	.094	.050	.021	.065	.035	.015	.038	.021	.009	.012	.007	.003	

C Range: 0 - 360DEG
C Interval: 15.0DEG
Test Speed: HIGH
Temperature:25.3DEG
Operators:Meng Yongjian
Test Date:2017-07-17

γ Range: 0 - 90DEG
γ Interval: 1.0DEG
Test System:EVERFINE GO-2000B_V1 SYSTEM V2.0.288
Humidity:52%
Test Distance:5.850m [K=1.0000]
Remarks:

UGR(Unified Glare Rating) Table

Test:U:220.7V I:0.0936A P:19.47W PF:0.9422 Lamp Flux:630x1 lm										
NAME: S125S3-18W-930					TYPE:Downlight			SERIAL No.:		
SPEC.:3000K					DIM.: L135mm*W135mm*H157mm					
MFR.: NEKO LIGHTING AG										
ceiling/cavity	0.7	0.7	0.5	0.5	0.3	0.7	0.7	0.5	0.5	0.3
walls	0.5	0.3	0.5	0.3	0.3	0.5	0.3	0.5	0.3	0.3
working plane	0.2	0.2	0.2	0.2	0.2	0.2	0.2	0.2	0.2	0.2
Room dimensions	Viewed crosswise					Viewed endwise				
x = 2H y = 2H	20.4	21.7	20.7	21.9	22.1	24.0	25.3	24.2	25.4	25.6
3H	20.5	21.6	20.7	21.8	22.1	25.3	26.5	25.6	26.7	27.0
4H	20.4	21.5	20.7	21.7	22.0	25.9	27.1	26.2	27.3	27.5
6H	20.3	21.4	20.6	21.6	21.9	26.4	27.4	26.7	27.7	27.9
8H	20.3	21.3	20.6	21.5	21.8	26.5	27.5	26.8	27.8	28.1
12H	20.2	21.2	20.5	21.5	21.8	26.6	27.5	26.9	27.8	28.1
4H 2H	21.6	22.7	21.9	22.9	23.1	24.3	25.4	24.6	25.6	25.9
3H	21.9	22.9	22.3	23.2	23.5	25.9	26.9	26.3	27.2	27.5
4H	22.0	22.9	22.4	23.2	23.5	26.7	27.6	27.1	27.9	28.2
6H	21.9	22.7	22.3	23.1	23.4	27.3	28.1	27.7	28.4	28.8
8H	21.9	22.6	22.3	23.0	23.4	27.5	28.2	27.9	28.6	28.9
12H	21.9	22.5	22.3	22.9	23.3	27.6	28.2	28.0	28.6	29.0
8H 4H	22.8	23.5	23.2	23.9	24.3	26.8	27.5	27.2	27.9	28.3
6H	22.9	23.5	23.3	23.9	24.3	27.6	28.2	28.0	28.6	29.0
8H	22.9	23.4	23.3	23.8	24.3	27.9	28.4	28.3	28.8	29.2
12H	22.8	23.3	23.3	23.7	24.2	28.0	28.5	28.5	28.9	29.4
12H 4H	22.9	23.6	23.3	24.0	24.4	26.8	27.5	27.2	27.8	28.2
6H	23.1	23.7	23.6	24.1	24.5	27.6	28.1	28.0	28.5	29.0
8H	23.1	23.6	23.6	24.0	24.5	27.9	28.3	28.4	28.8	29.3
Variations with the observer position at spacings:										
S = 1.0H	+ 0.8 / - 0.8					+ 0.2 / - 0.3				
1.5H	+ 0.6 / - 1.1					+ 0.1 / - 0.3				
2.0H	+ 1.1 / - 1.8					+ 0.3 / - 0.4				

CIE Pub.117 Corrected 630.0 lm Total Lamp Luminous Flux.(8log(F/F0) = -1.6)

C Range: 0 - 360DEG
C Interval: 15.0DEG
Test Speed: HIGH
Temperature:25.3DEG
Operators:Meng Yongjian
Test Date:2017-07-17

γ Range: 0 - 90DEG
γ Interval: 1.0DEG
Test System:EVERFINE GO-2000B_V1 SYSTEM V2.0.288
Humidity:52%
Test Distance:5.850m [K=1.0000]
Remarks:

UTILIZATION FACTORS TABLE

Test:U:220.7V I:0.0936A P:19.47W PF:0.9422 Lamp Flux:630x1 lm		
NAME: S125S3-18W-930	TYPE:Downlight	SERIAL No.:
SPEC.:3000K	DIM.: L135mm*W135mm*H157mm	
MFR.: NEKO LIGHTING AG		

REFLECTANCE										
Ceiling	0.8	0.8	0.8	0.7	0.7	0.7	0.5	0.5	0.5	0
Walls	0.7	0.5	0.3	0.7	0.5	0.3	0.7	0.5	0.3	0
Working plane	0.2	0.2	0.2	0.2	0.2	0.2	0.2	0.2	0.2	0
ROOM INDEX	UTILIZATION FACTORS(PERCENT) $k(RI) \times RCR = 5$									
$k = 0.60$	69	59	54	68	59	54	67	59	53	48
0.80	78	69	63	78	69	63	76	68	63	57
1.00	86	77	71	85	76	71	83	77	70	64
1.25	92	83	78	90	83	78	88	82	77	71
1.50	96	88	83	94	87	82	92	86	81	75
2.00	101	94	89	99	93	89	96	91	87	81
2.50	104	98	93	102	97	92	99	94	90	83
3.00	107	101	97	105	100	96	101	97	94	86
4.00	110	105	102	107	103	100	103	100	98	89
5.00	111	108	105	109	106	103	105	102	100	91
ROOM INDEX	UF(total)									Direct
According to DIN EN 13032-2 2004			Suspended					SHRNOM = 1.25		

C Range: 0 - 360DEG
 C Interval: 15.0DEG
 Test Speed: HIGH
 Temperature:25.3DEG
 Operators:Meng Yongjian
 Test Date:2017-07-17

γ Range: 0 - 90DEG
 γ Interval: 1.0DEG
 γ Test System:EVERFINE GO-2000B_V1 SYSTEM V2.0.288
 Humidity:52%
 Test Distance:5.850m [K=1.0000]
 Remarks:

ISOCANDELA DIAGRAM

Test:U:220.7V I:0.0936A P:19.47W PF:0.9422 Lamp Flux:630x1 lm		
NAME: S125S3-18W-930	TYPE:Downlight	SERIAL No.:
SPEC.:3000K	DIM.: L135mm*W135mm*H157mm	
MFR.: NEKO LIGHTING AG		

Conical surface Flux(90deg):

456.04 lm

%lum = 72.4%

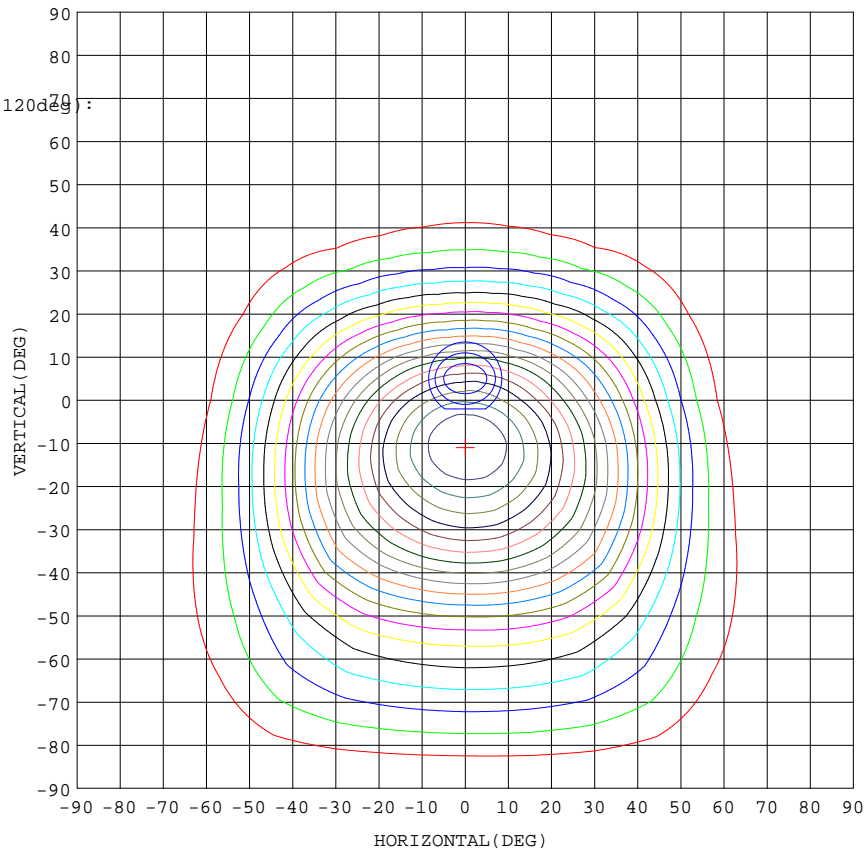
%lamp = 72.4%

Conical surface Flux(120deg):

564.7 lm

%lum = 89.6%

%lamp = 89.6%



5% 24.52
10% 49.05
15% 73.57
20% 98.09
25% 122.6
30% 147.1
35% 171.7
40% 196.2
45% 220.7
50% 245.2
55% 269.8
60% 294.3
65% 318.8
70% 343.3
75% 367.8
80% 392.4
85% 416.9
90% 441.4
95% 465.9

1. AVG=381.1,MIN=336.5
2. AVG=378.1,MIN=300.5
3. AVG=371.6,MIN=264.2

I_{max}:490.5 (H0.0,V-11.0)
(At:C=90.0,Gamma=11.0)

UNIT: cd

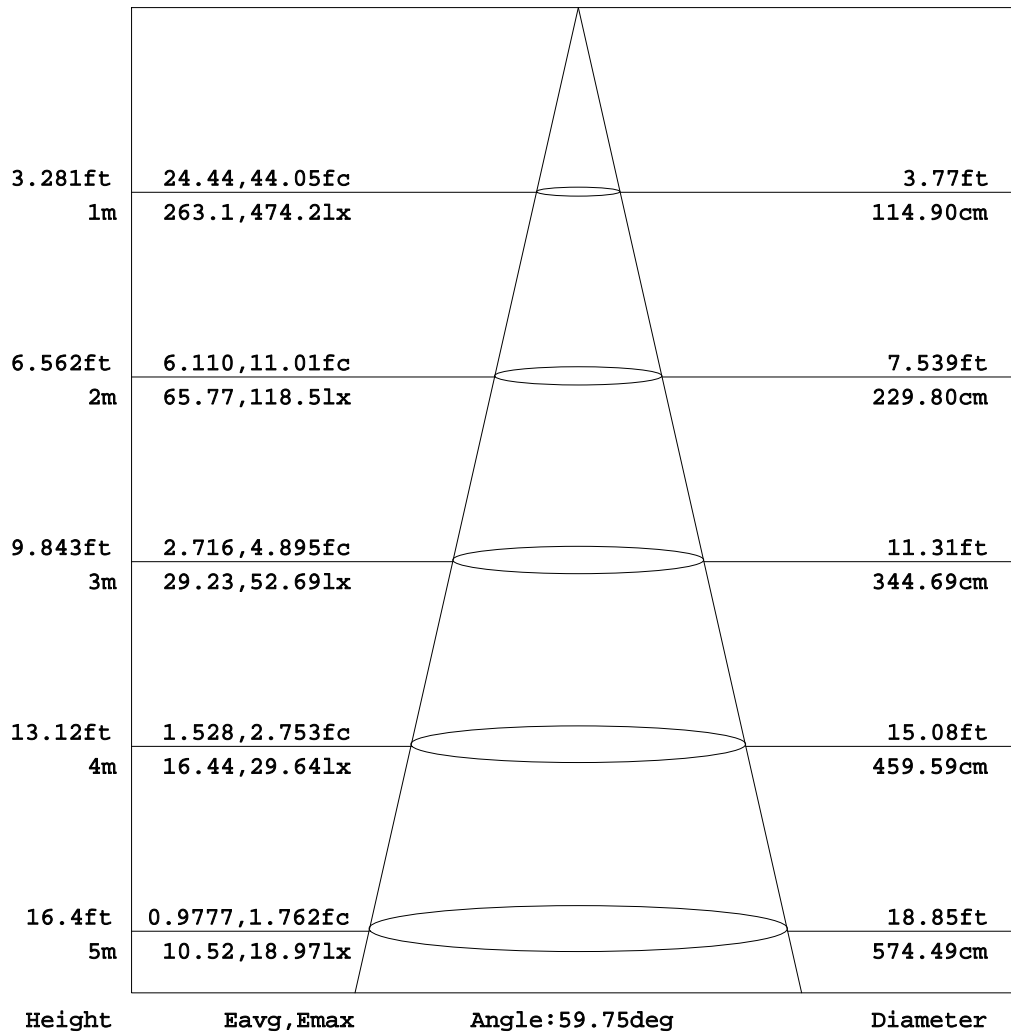
C Range: 0 - 360DEG
C Interval: 15.0DEG
Test Speed: HIGH
Temperature:25.3DEG
Operators:Meng Yongjian
Test Date:2017-07-17

γ Range: 0 - 90DEG
γ Interval: 1.0DEG
Test System:EVERFINE GO-2000B_V1 SYSTEM V2.0.288
Humidity:52%
Test Distance:5.850m [K=1.0000]
Remarks:

AAI Figure

Test:U:220.7V I:0.0936A P:19.47W PF:0.9422 Lamp Flux:630x1 lm		
NAME: S125S3-18W-930	TYPE:Downlight	SERIAL No.:
SPEC.:3000K	DIM.: L135mm*W135mm*H157mm	
MFR.: NEKO LIGHTING AG		

Flux out:275.5 lm



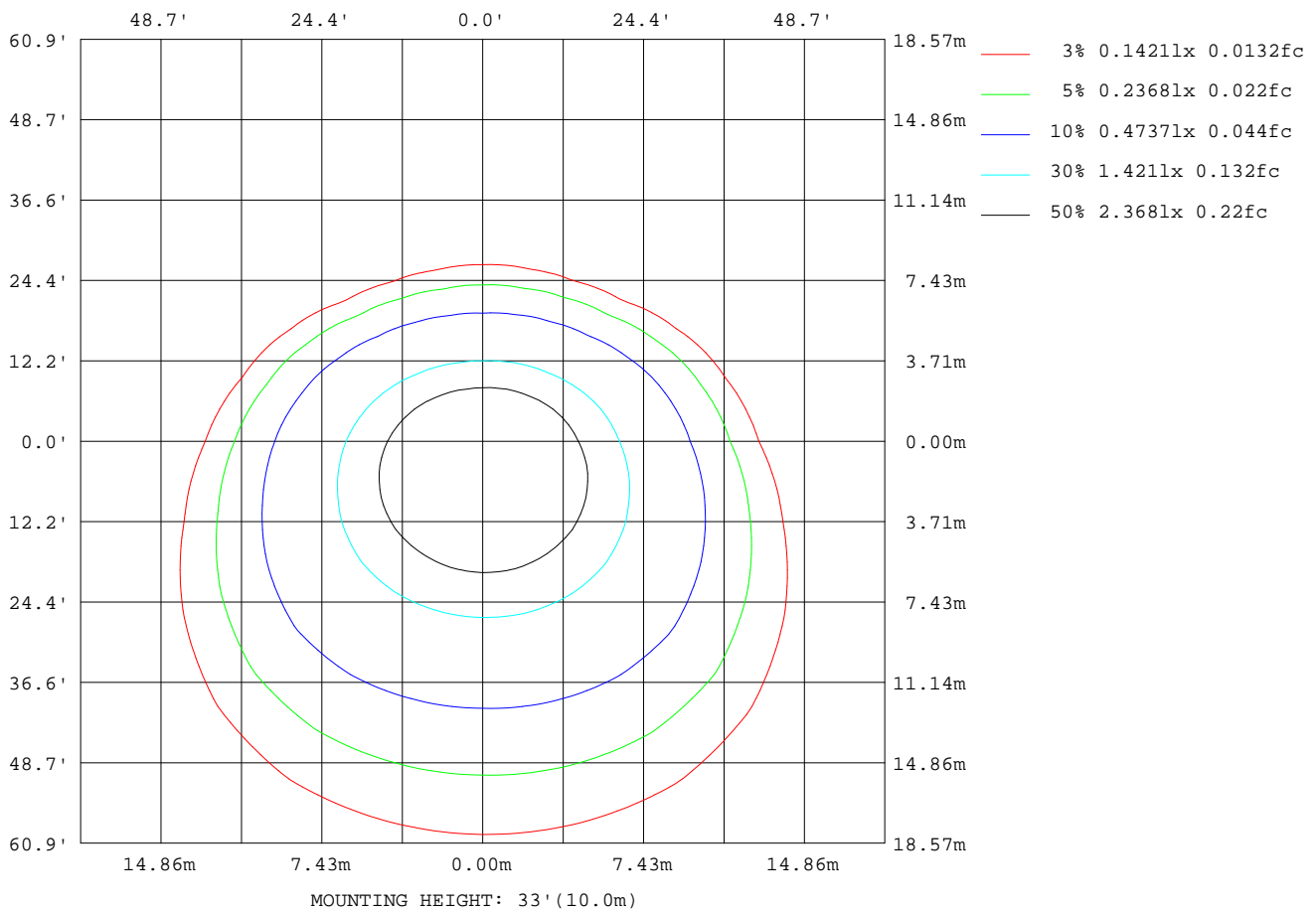
Note: The Curves indicate the illuminated area and the average illumination when the luminaire is at different distance.

C Range: 0 - 360DEG
C Interval: 15.0DEG
Test Speed: HIGH
Temperature: 25.3DEG
Operators: Meng Yongjian
Test Date: 2017-07-17

γ Range: 0 - 90DEG
γ Interval: 1.0DEG
Test System: EVERFINE GO-2000B_V1 SYSTEM V2.0.288
Humidity: 52%
Test Distance: 5.850m [K=1.0000]
Remarks:

ISOLUX DIAGRAM

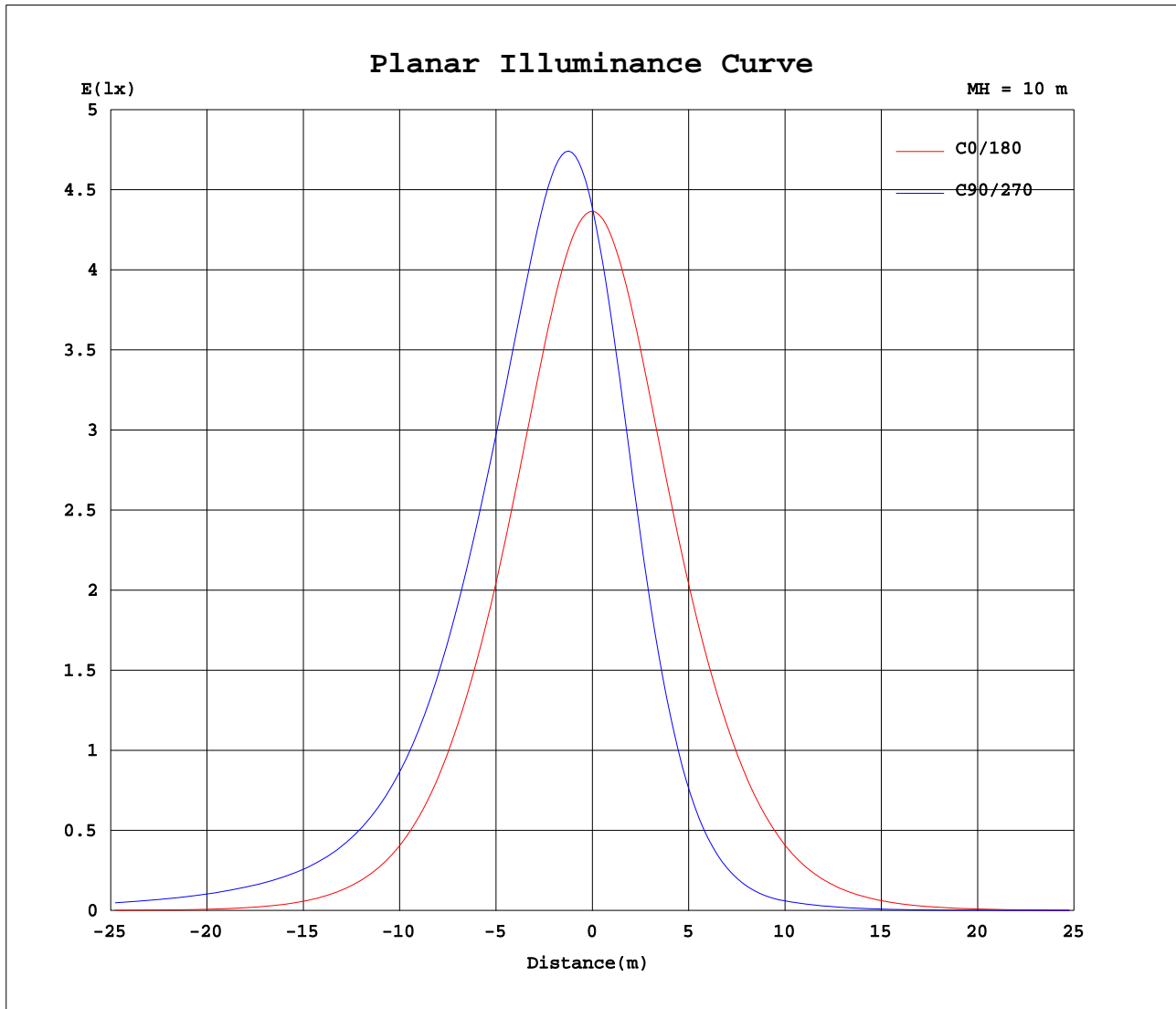
Test:U:220.7V I:0.0936A P:19.47W PF:0.9422 Lamp Flux:630x1 lm		
NAME: S125S3-18W-930	TYPE:Downlight	SERIAL No.:
SPEC.:3000K	DIM.: L135mm*W135mm*H157mm	
MFR.: NEKO LIGHTING AG		



C Range: 0 - 360DEG
C Interval: 15.0DEG
Test Speed: HIGH
Temperature:25.3DEG
Operators:Meng Yongjian
Test Date:2017-07-17

γ Range: 0 - 90DEG
γ Interval: 1.0DEG
Test System:EVERFINE GO-2000B_V1 SYSTEM V2.0.288
Humidity:52%
Test Distance:5.850m [K=1.0000]
Remarks:

Planar Illuminance Curve



C Range: 0 - 360DEG
C Interval: 15.0DEG
Test Speed: HIGH
Temperature: 25.3DEG
Operators: Meng Yongjian
Test Date: 2017-07-17

γ Range: 0 - 90DEG
 γ Interval: 1.0DEG
Test System: EVERFINE GO-2000B_V1 SYSTEM V2.0.288
Humidity: 52%
Test Distance: 5.850m [K=1.0000]
Remarks:

```

γ Range: 0 - 90DEG
γ Interval: 1.0DEG
Test System:EVERFINE GO-2000B_V1 SYSTEM V2.0.288
Humidity:52%
Test Distance:5.850m [K=1.0000]
Remarks:

```

```

γ Range: 0 - 90DEG
γ Interval: 1.0DEG
Test System:EVERFINE GO-2000B_V1 SYSTEM V2.0.288
Humidity:52%
Test Distance:5.850m [K=1.0000]
Remarks:

```

Photometric Data Table [cd]

G/C	0.0	15.0	30.0	45.0	60.0	75.0	90.0	105.0	120.0	135.0
0.0	436.6	436.8	437.6	437.4	438.5	437.4	438.8	439.7	440.6	439.2
3.0	434.1	442.2	449.7	455.6	460.6	462.4	464.1	463.7	461.4	456.0
6.0	426.6	442.0	455.6	466.9	475.2	479.4	481.1	479.6	474.5	465.7
9.0	414.4	436.6	455.5	471.4	482.1	487.9	489.6	487.0	479.9	468.6
12.0	398.2	426.4	449.9	469.2	481.5	488.3	489.5	486.3	478.0	465.2
15.0	378.7	412.2	439.3	461.3	474.3	481.2	481.9	478.3	469.5	456.1
18.0	356.8	394.5	424.7	448.5	461.8	468.3	468.4	464.5	455.7	442.2
21.0	333.0	374.1	406.7	431.9	445.0	451.5	451.5	447.0	438.0	424.7
24.0	308.1	351.8	386.2	412.5	425.7	432.8	432.5	427.7	417.9	404.6
27.0	282.2	328.1	364.0	391.0	404.6	412.2	412.0	406.8	396.4	382.9
30.0	255.9	303.3	340.6	368.5	381.9	389.9	389.3	384.2	373.7	360.2
33.0	228.8	277.6	316.6	345.0	358.1	365.2	363.9	359.4	350.1	336.8
36.0	200.7	250.6	292.2	320.8	333.4	338.3	336.1	332.6	325.6	313.1
39.0	171.4	221.5	266.9	296.4	307.8	309.3	306.1	303.5	299.9	289.1
42.0	142.4	191.8	238.9	271.8	280.2	278.9	275.2	273.4	272.4	264.4
45.0	114.7	162.8	209.8	246.7	252.4	249.4	244.7	244.0	244.9	239.0
48.0	89.17	134.9	180.9	219.2	225.3	220.7	215.8	215.7	218.0	211.5
51.0	66.51	108.0	153.2	190.9	198.7	194.1	189.4	189.6	191.9	183.5
54.0	46.82	84.22	127.3	163.8	173.8	170.3	166.1	166.3	167.6	156.9
57.0	30.81	63.42	104.2	139.4	151.5	149.8	147.2	146.6	146.3	133.7
60.0	18.47	46.75	84.84	117.9	132.7	133.3	132.1	131.1	128.7	113.5
63.0	9.927	34.69	68.89	100.7	116.9	118.4	117.9	116.2	113.8	97.68
66.0	5.837	26.24	55.89	86.94	102.4	103.8	103.5	101.9	99.49	85.01
69.0	3.924	20.49	45.68	74.67	88.16	89.31	89.01	87.59	85.51	73.29
72.0	2.489	15.06	36.60	62.63	73.86	74.97	74.69	73.27	71.41	61.55
75.0	1.486	10.29	27.59	50.62	59.66	60.81	60.26	58.98	57.32	49.74
78.0	0.8089	6.117	18.91	38.49	45.50	46.51	45.81	44.72	43.44	37.66
81.0	0.4100	2.905	11.05	26.35	31.47	32.27	31.46	30.66	29.53	25.52
84.0	0.2126	0.9278	4.840	14.55	17.77	18.38	17.56	17.02	16.11	13.71
87.0	0.1423	0.1811	1.087	4.537	5.598	5.782	5.103	4.738	4.350	3.907
90.0	0.0831	0.0787	0.0853	0.0853	0.1159	0.1159	0.0831	0.0896	0.1399	0.1771
G/C	150.0	165.0	180.0	195.0	210.0	225.0	240.0	255.0	270.0	285.0
0.0	439.5	438.8	436.6	437.6	437.4	438.5	437.4	438.8	439.7	439.2
3.0	450.3	443.0	433.8	426.3	420.2	413.8	410.3	406.4	407.0	409.5
6.0	454.8	441.7	425.9	411.0	398.2	385.4	377.4	370.3	370.2	373.8
9.0	453.3	435.1	413.5	391.6	372.4	353.3	340.8	330.3	329.4	334.1
12.0	446.5	423.8	397.0	369.0	343.8	318.8	301.4	287.8	285.7	291.6
15.0	434.9	408.6	377.3	343.8	313.2	282.5	261.3	245.3	242.7	248.9
18.0	419.3	390.2	355.2	317.3	281.7	246.5	222.6	205.4	202.1	208.7
21.0	400.6	369.3	331.3	289.9	249.9	211.8	186.3	168.4	164.8	171.4
24.0	379.8	346.7	306.4	262.2	218.7	179.1	153.0	135.4	131.6	137.9
27.0	357.3	322.8	280.8	234.5	188.8	148.7	122.4	106.5	102.6	108.6
30.0	334.0	298.0	254.9	206.9	160.1	120.6	96.00	81.89	78.56	83.54
33.0	310.1	272.2	227.9	179.3	132.7	95.08	72.91	61.27	58.89	62.72
36.0	285.4	244.9	200.1	151.7	106.8	72.24	53.43	44.58	43.33	45.72
39.0	259.6	215.9	171.4	124.7	83.44	52.49	37.56	31.72	31.24	32.55
42.0	231.7	186.6	143.1	99.01	63.28	36.57	25.22	21.95	22.32	22.61
45.0	203.1	158.3	115.4	75.86	46.15	24.19	16.11	15.55	17.09	16.09
48.0	175.0	130.6	90.14	55.63	32.22	14.92	10.26	12.05	13.54	12.52
51.0	148.0	104.8	67.81	38.99	21.21	8.503	7.633	9.091	10.29	9.470
54.0	122.8	81.93	48.70	25.49	12.85	4.957	5.670	6.634	7.379	6.923
57.0	100.7	62.24	33.01	15.12	6.945	3.724	4.191	4.721	5.055	4.903
60.0	82.45	46.57	20.89	7.701	3.333	2.836	3.139	3.366	3.503	3.466
63.0	67.72	35.20	12.19	3.155	2.042	2.195	2.394	2.475	2.513	2.524
66.0	55.72	26.78	7.205	1.545	1.586	1.722	1.850	1.845	1.857	1.875
69.0	45.92	20.98	4.952	1.147	1.234	1.363	1.431	1.407	1.407	1.424
72.0	36.97	15.54	3.246	0.9058	0.9611	1.079	1.116	1.090	1.086	1.105
75.0	27.95	10.68	1.953	0.7046	0.7537	0.8425	0.8695	0.8469	0.8521	0.8600
78.0	19.16	6.416	1.051	0.5318	0.5789	0.6521	0.6860	0.6739	0.6772	0.6804
81.0	11.23	3.157	0.4972	0.3852	0.4368	0.4989	0.5351	0.5164	0.5112	0.5142
84.0	4.947	1.149	0.2313	0.2715	0.3122	0.3699	0.4084	0.4049	0.3953	0.4048
87.0	1.166	0.3558	0.1331	0.1818	0.2052	0.2714	0.3080	0.3129	0.2993	0.3129
90.0	0.2121	0.2033	0.0765	0.1115	0.1246	0.1924	0.2208	0.2405	0.2340	0.2514
G/C	300.0	315.0	330.0	345.0						
0.0	440.6	439.2	439.5	438.8						
3.0	413.5	416.7	423.3	429.3						
6.0	381.4	389.2	402.1	414.9						
9.0	345.2	357.8	376.9	396.2						
12.0	305.9	323.6	348.7	374.1						
15.0	265.6	287.2	318.4	349.2						
18.0	226.5	251.1	286.8	323.0						
21.0	189.7	215.9	254.8	295.4						

C Range: 0 - 360DEG
 C Interval: 15.0DEG
 Test Speed: HIGH
 Temperature: 25.3DEG
 Operators: Meng Yongjian
 Test Date: 2017-07-17

γ Range: 0 - 90DEG
 γ Interval: 1.0DEG
 Test System: EVERFINE GO-2000B_V1 SYSTEM V2.0.288
 Humidity: 52%
 Test Distance: 5.850m [K=1.0000]
 Remarks:

Photometric Data Table [cd]

24.0	155.9	182.7	223.2	267.5
27.0	125.4	151.8	192.6	239.3
30.0	97.90	123.2	163.5	211.2
33.0	74.54	97.20	135.8	183.2
36.0	54.84	74.03	109.3	155.6
39.0	38.66	53.96	85.57	128.2
42.0	26.05	37.65	65.04	101.9
45.0	16.78	24.92	47.50	78.24
48.0	10.80	15.37	33.14	57.76
51.0	8.035	8.734	21.78	40.25
54.0	5.957	5.173	13.13	26.25
57.0	4.405	3.877	7.048	15.46
60.0	3.274	2.945	3.398	7.743
63.0	2.470	2.278	2.151	3.101
66.0	1.892	1.799	1.678	1.613
69.0	1.464	1.418	1.330	1.247
72.0	1.129	1.103	1.055	0.9716
75.0	0.8783	0.8687	0.8390	0.7484
78.0	0.6926	0.6914	0.6641	0.5668
81.0	0.5461	0.5491	0.5177	0.4245
84.0	0.4172	0.4289	0.3975	0.3130
87.0	0.3190	0.3326	0.2970	0.2255
90.0	0.2711	0.2536	0.2165	0.1552

C Range: 0 - 360DEG
C Interval: 15.0DEG
Test Speed: HIGH
Temperature: 25.3DEG
Operators: Meng Yongjian
Test Date: 2017-07-17

γ Range: 0 - 90DEG
γ Interval: 1.0DEG
Test System: EVERFINE GO-2000B_V1 SYSTEM V2.0.288
Humidity: 52%
Test Distance: 5.850m [K=1.0000]
Remarks: