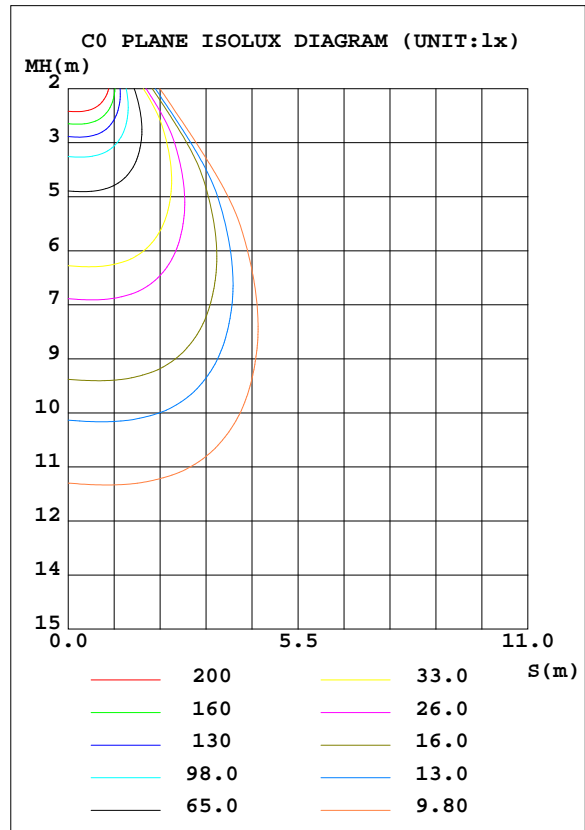
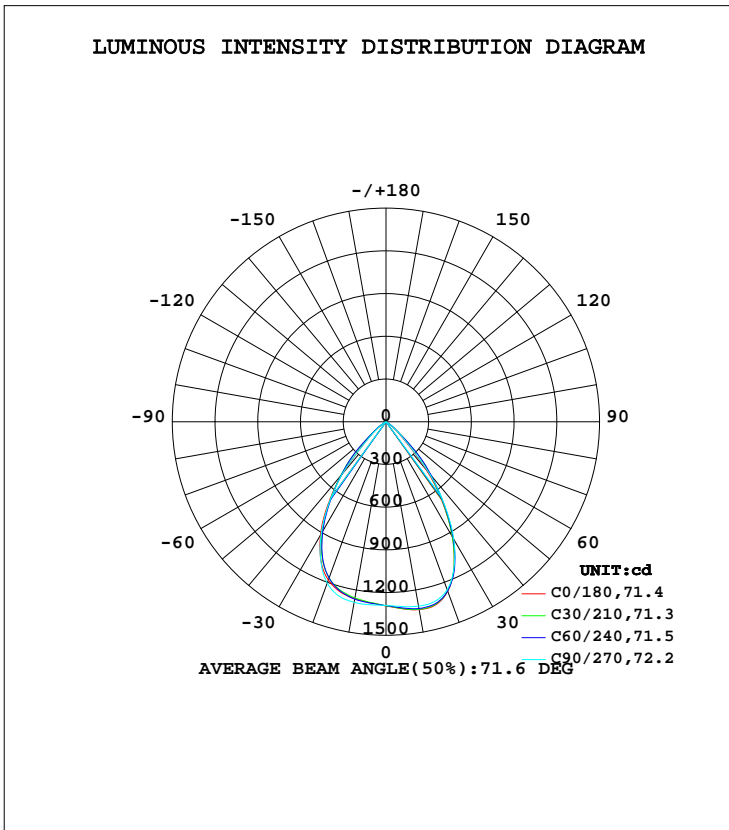


LUMINAIRE PHOTOMETRIC TEST REPORT

Test:U:34.60V I:0.5000A P:17.30W PF:1.000 Freq:0Hz Lamp Flux:1681.2x1 lm		
NAME: TS150-18W-940	TYPE:Downlight	SERIAL No.:
SPEC.:4000K	DIM.: L168mm*W168mm*H80mm	
MFR.: NEKO LIGHTING AG		

DATA OF LAMP		PHOTOMETRIC DATA Eff: 97.18 lm/W			
MODEL	CITIZEN-4000K	Imax(cd)	1342	S/MH(C0/180)	1.06
NOMINAL POWER(W)	18	LOR(%)	100.0	S/MH(C90/270)	1.05
RATED VOLTAGE(V)	36.0	TOTAL FLUX(lm)	1681.2	η UP, DN(C0-180)	0.0,50.4
NOMINAL FLUX(lm)	1681.2	CIE CLASS	DIRECT	η UP, DN(C180-360)	0.0,49.6
LAMPS INSIDE	1	η up(%)	0.0	CIBSE SHR NOM	1.00
TEST VOLTAGE(V)	34.6	η down(%)	100.0	CIBSE SHR MAX	1.10



C Range: 0 - 360DEG
 C Interval: 15.0DEG
 Test Speed: HIGH
 Temperature:25.3DEG
 Operators:Myles
 Test Date:2018-10-12

γ Range: 0 - 90DEG
 γ Interval: 1.0DEG
 Test System:EVERFINE GO-2000B_V1 SYSTEM V2.0.362
 Humidity:56%
 Test Distance:5.850m [K=1.0000]
 Remarks:

ZONAL FLUX DIAGRAM

ZONAL FLUX DIAGRAM:

γ	C0	C45	C90	C135	C180	C225	C270	C315	γ	Φ zone	Φ total	%lum,lamp
10	1339	1336	1315	1286	1262	1258	1288	1329	0- 10	123.9	123.9	7.37,7.37
20	1267	1267	1255	1221	1183	1162	1206	1261	10- 20	361.6	485.5	28.9,28.9
30	933.9	939.6	952.2	923.4	922.5	882.8	911.8	917.1	20- 30	502.0	987.5	58.7,58.7
40	441.7	492.8	470.4	498.7	475.2	481.3	474.6	478.1	30- 40	436.3	1424	84.7,84.7
50	88.19	194.9	100.4	204.7	108.7	201.9	104.0	198.5	40- 50	211.2	1635	97.2,97.2
60	5.713	12.65	6.353	15.82	6.971	17.81	7.296	14.50	50- 60	42.59	1677	99.8,99.8
70	0.9237	0.9066	0.8231	1.162	1.085	1.175	0.8473	0.8930	60- 70	2.884	1680	100,100
80	0.2934	0.2839	0.2715	0.3756	0.3624	0.4050	0.2489	0.2802	70- 80	0.6548	1681	100,100
90	0.0940	0.0875	0.0875	0.0875	0.0525	0.0459	0.0481	0.0459	80- 90	0.1733	1681	100,100
100									90-100			
110									100-110			
120									110-120			
130									120-130			
140									130-140			
150									140-150			
160									150-160			
170									160-170			
180									170-180			
DEG	LUMINOUS INTENSITY:cd									UNIT:lm		

Conical surface Flux(90deg): 1560.3 lm

%lum = 92.8%

%lamp = 92.8%

Conical surface Flux(120deg): 1677.5 lm

%lum = 99.8%

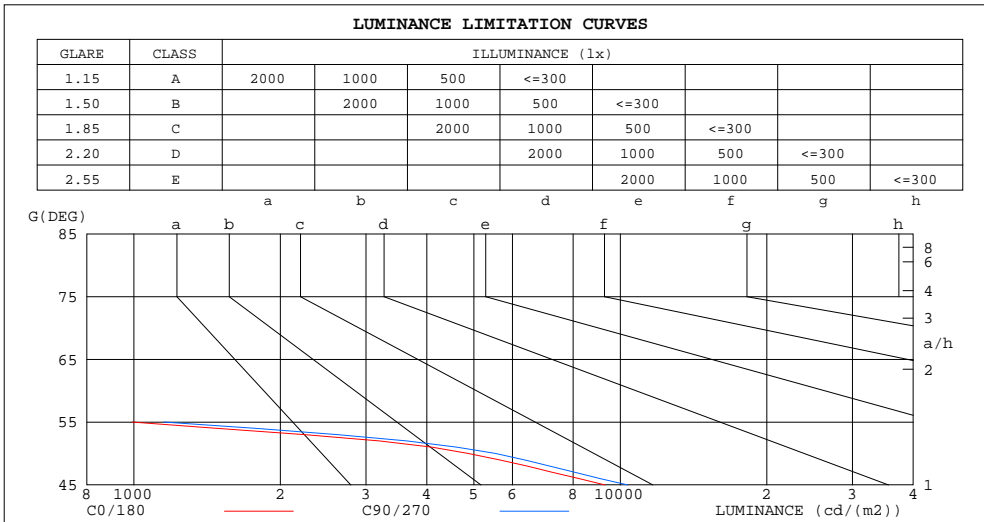
%lamp = 99.8%

C Range: 0 - 360DEG
C Interval: 15.0DEG
Test Speed: HIGH
Temperature:25.3DEG
Operators:Myles
Test Date:2018-10-12

γ Range: 0 - 90DEG
 γ Interval: 1.0DEG
Test System:EVERFINE GO-2000B_V1 SYSTEM V2.0.362
Humidity:56%
Test Distance:5.850m [K=1.0000]
Remarks:

LUMINANCE LIMITATION CURVES

Test:U:34.60V I:0.5000A P:17.30W PF:1.000 Freq:0Hz Lamp Flux:1681.2x1 lm		
NAME: TS150-18W-940	TYPE:Downlight	SERIAL No.:
SPEC.:4000K	DIM.: L168mm*W168mm*H80mm	
MFR.: NEKO LIGHTING AG		



LUMINANCE cd/(m2)		
G(DEG)	C0/180	C90/270
85	63	55
80	60	55
75	74	67
70	96	85
65	131	120
60	405	450
55	992	1153
50	4861	5535
45	9300	10352

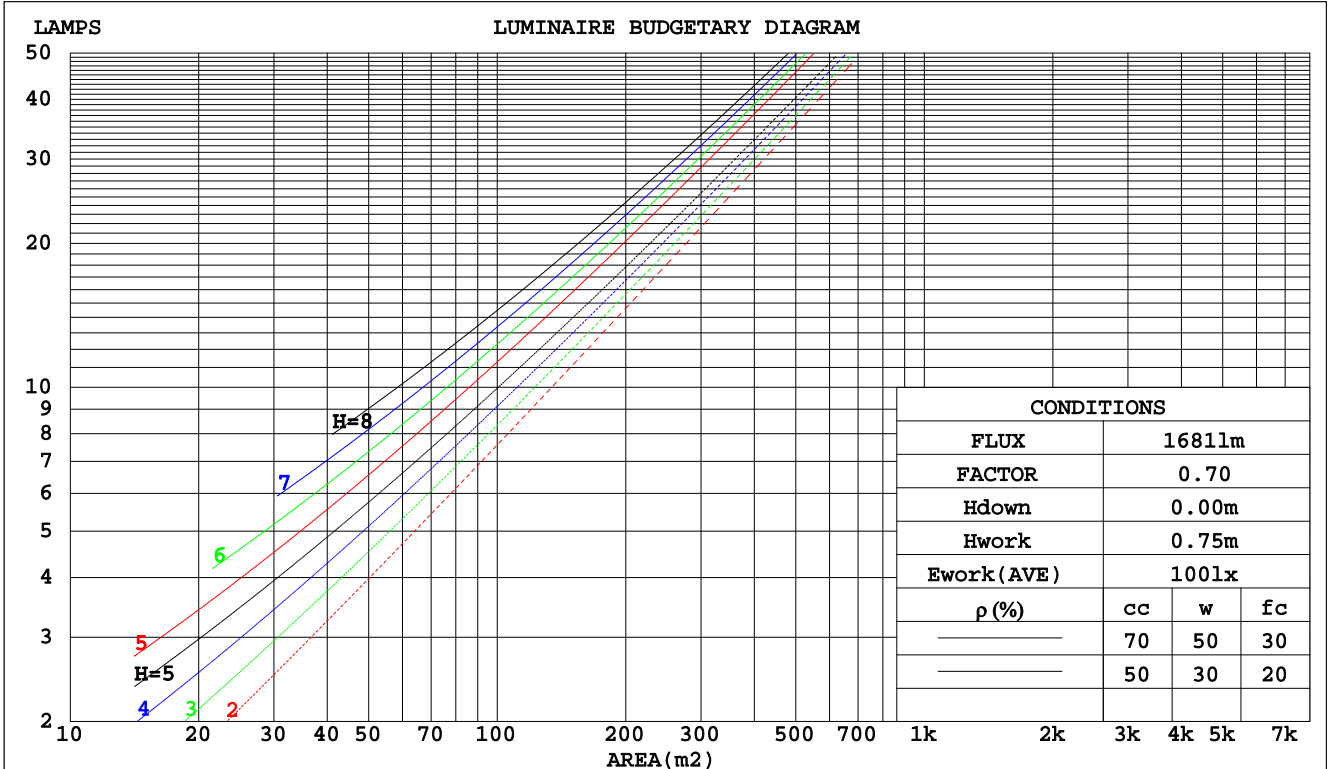
C Range: 0 - 360DEG
 C Interval: 15.0DEG
 Test Speed: HIGH
 Temperature:25.3DEG
 Operators:Myles
 Test Date:2018-10-12

γ Range: 0 - 90DEG
 γ Interval: 1.0DEG
 Test System:EVERFINE GO-2000B_V1 SYSTEM V2.0.362
 Humidity:56%
 Test Distance:5.850m [K=1.0000]
 Remarks:

CU AND LUMINAIRE BUDGETARY ESTIMATE DIAGRAM

Test:U:34.60V I:0.5000A P:17.30W PF:1.000 Freq:0Hz Lamp Flux:1681.2x1 lm		
NAME: TS150-18W-940	TYPE:Downlight	SERIAL No.:
SPEC.:4000K	DIM.: L168mm*W168mm*H80mm	
MFR.: NEKO LIGHTING AG		

pcc	80%			70%			50%			30%			10%			0
pw	50%	30%	10%	50%	30%	10%	50%	30%	10%	50%	30%	10%	50%	30%	10%	0
pfc	20%			20%			20%			20%			20%			0
RCR	RCR:Room Cavity Ratio															
	Coefficients of Utilization(CU)															
0.0	1.19	1.19	1.19	1.16	1.16	1.16	1.11	1.11	1.11	1.06	1.06	1.06	1.02	1.02	1.02	1.00
1.0	1.10	1.07	1.05	1.08	1.06	1.03	1.04	1.02	1.00	1.00	.99	.97	.97	.95	.94	.93
2.0	1.02	.97	.94	.90	.96	.92	.97	.93	.90	.94	.91	.88	.91	.89	.87	.85
3.0	.94	.88	.84	.86	.87	.83	.90	.85	.82	.87	.84	.81	.85	.82	.79	.78
4.0	.87	.81	.76	.86	.80	.76	.83	.78	.75	.81	.77	.74	.79	.76	.73	.71
5.0	.80	.74	.69	.79	.73	.69	.77	.72	.68	.76	.71	.68	.74	.70	.67	.65
6.0	.75	.68	.63	.74	.68	.63	.72	.67	.63	.71	.66	.62	.69	.65	.62	.60
7.0	.69	.63	.58	.69	.62	.58	.67	.62	.58	.66	.61	.57	.65	.60	.57	.56
8.0	.65	.58	.54	.64	.58	.54	.63	.57	.53	.62	.57	.53	.61	.56	.53	.51
9.0	.61	.54	.50	.60	.54	.50	.59	.53	.49	.58	.53	.49	.57	.53	.49	.48
10.0	.57	.50	.46	.56	.50	.46	.55	.50	.46	.55	.49	.46	.54	.49	.46	.44



C Range: 0 - 360DEG
 C Interval: 15.0DEG
 Test Speed: HIGH
 Temperature: 25.3DEG
 Operators: Myles
 Test Date: 2018-10-12

γ Range: 0 - 90DEG
 γ Interval: 1.0DEG
 Test System: EVERFINE GO-2000B_V1 SYSTEM V2.0.362
 Humidity: 56%
 Test Distance: 5.850m [K=1.0000]
 Remarks:

WEC AND CCEC

Test:U:34.60V I:0.5000A P:17.30W PF:1.000 Freq:0Hz Lamp Flux:1681.2x1 lm		
NAME: TS150-18W-940	TYPE:Downlight	SERIAL No.:
SPEC.:4000K	DIM.: L168mm*W168mm*H80mm	
MFR.: NEKO LIGHTING AG		

ρcc	80%			70%			50%			30%			10%			0
ρw	50%	30%	10%	50%	30%	10%	50%	30%	10%	50%	30%	10%	50%	30%	10%	0
ρfc	20%			20%			20%			20%			20%			0
RCR	RCR:Room Cavity Ratio						Wall Exitance Coefficients(WEC)									
0.0																
1.0	.191	.109	.034	.184	.105	.033	.172	.098	.031	.160	.092	.030	.149	.086	.028	
2.0	.185	.102	.031	.180	.099	.030	.169	.094	.029	.159	.089	.028	.150	.085	.027	
3.0	.178	.095	.028	.173	.093	.028	.164	.089	.027	.155	.085	.026	.147	.082	.025	
4.0	.170	.088	.026	.166	.087	.026	.158	.084	.025	.150	.081	.024	.143	.078	.024	
5.0	.163	.083	.024	.159	.082	.024	.152	.079	.023	.145	.077	.023	.139	.074	.022	
6.0	.155	.078	.022	.152	.077	.022	.146	.075	.022	.140	.073	.021	.135	.071	.021	
7.0	.148	.073	.021	.146	.073	.021	.140	.071	.020	.135	.069	.020	.130	.067	.020	
8.0	.142	.069	.020	.139	.069	.019	.134	.067	.019	.130	.066	.019	.125	.064	.019	
9.0	.136	.066	.018	.134	.065	.018	.129	.064	.018	.125	.063	.018	.121	.061	.018	
10.0	.130	.062	.017	.128	.062	.017	.124	.061	.017	.120	.060	.017	.117	.059	.017	

ρcc	80%			70%			50%			30%			10%			0
ρw	50%	30%	10%	50%	30%	10%	50%	30%	10%	50%	30%	10%	50%	30%	10%	0
ρfc	20%			20%			20%			20%			20%			0
RCR	RCR:Room Cavity Ratio						Ceiling Cavity Exitance Coefficients(CCEC)									
0.0	.190	.190	.190	.163	.163	.163	.111	.111	.111	.064	.064	.064	.020	.020	.020	
1.0	.172	.157	.144	.147	.135	.124	.101	.093	.086	.058	.054	.050	.019	.017	.016	
2.0	.158	.132	.111	.135	.114	.096	.093	.079	.067	.053	.046	.039	.017	.015	.013	
3.0	.147	.114	.087	.126	.098	.076	.086	.068	.053	.050	.040	.031	.016	.013	.010	
4.0	.137	.099	.070	.118	.086	.061	.081	.060	.043	.047	.035	.025	.015	.011	.008	
5.0	.129	.088	.057	.111	.076	.050	.077	.053	.035	.044	.031	.021	.014	.010	.007	
6.0	.123	.079	.048	.105	.068	.041	.073	.048	.029	.042	.028	.017	.014	.009	.006	
7.0	.116	.072	.040	.100	.062	.035	.069	.043	.025	.040	.026	.015	.013	.008	.005	
8.0	.111	.065	.034	.096	.057	.030	.066	.040	.021	.038	.024	.013	.012	.008	.004	
9.0	.106	.060	.030	.091	.052	.026	.063	.037	.018	.037	.022	.011	.012	.007	.004	
10.0	.101	.056	.026	.087	.049	.023	.061	.034	.016	.035	.020	.010	.011	.007	.003	

C Range: 0 - 360DEG
 C Interval: 15.0DEG
 Test Speed: HIGH
 Temperature:25.3DEG
 Operators:Myles
 Test Date:2018-10-12

γ Range: 0 - 90DEG
 γ Interval: 1.0DEG
 Test System:EVERFINE GO-2000B_V1 SYSTEM V2.0.362
 Humidity:56%
 Test Distance:5.850m [K=1.0000]
 Remarks:

UGR(Unified Glare Rating) Table

Test:U:34.60V I:0.5000A P:17.30W PF:1.000 Freq:0Hz Lamp Flux:1681.2x1 lm		
NAME: TS150-18W-940	TYPE:Downlight	SERIAL No.:
SPEC.:4000K	DIM.: L168mm*W168mm*H80mm	
MFR.: NEKO LIGHTING AG		

ceiling/cavity	0.7	0.7	0.5	0.5	0.3	0.7	0.7	0.5	0.5	0.3
walls	0.5	0.3	0.5	0.3	0.3	0.5	0.3	0.5	0.3	0.3
working plane	0.2	0.2	0.2	0.2	0.2	0.2	0.2	0.2	0.2	0.2
Room dimensions	Viewed crosswise					Viewed endwise				
x = 2H y = 2H	15.6	16.6	15.8	16.8	17.0	15.8	16.9	16.0	17.0	17.2
3H	15.4	16.4	15.7	16.6	16.8	15.6	16.6	15.9	16.8	17.0
4H	15.3	16.2	15.6	16.4	16.7	15.5	16.4	15.8	16.7	16.9
6H	15.2	16.1	15.5	16.3	16.6	15.4	16.3	15.7	16.5	16.8
8H	15.2	16.0	15.5	16.2	16.5	15.4	16.2	15.7	16.5	16.7
12H	15.1	15.9	15.5	16.2	16.5	15.4	16.1	15.7	16.4	16.7
4H 2H	15.3	16.2	15.6	16.5	16.7	15.6	16.5	15.8	16.7	16.9
3H	15.1	15.9	15.5	16.2	16.5	15.4	16.2	15.7	16.4	16.7
4H	15.0	15.8	15.4	16.1	16.4	15.3	16.0	15.6	16.3	16.6
6H	15.0	15.6	15.3	15.9	16.3	15.2	15.8	15.6	16.1	16.5
8H	14.9	15.5	15.3	15.8	16.2	15.1	15.7	15.5	16.1	16.4
12H	14.9	15.4	15.3	15.8	16.1	15.1	15.6	15.5	16.0	16.4
8H 4H	14.9	15.5	15.3	15.8	16.2	15.1	15.7	15.5	16.1	16.4
6H	14.8	15.3	15.2	15.7	16.1	15.0	15.5	15.5	15.9	16.3
8H	14.8	15.2	15.2	15.6	16.0	15.0	15.4	15.4	15.8	16.3
12H	14.7	15.1	15.2	15.5	16.0	14.9	15.3	15.4	15.7	16.2
12H 4H	14.9	15.4	15.3	15.8	16.1	15.1	15.6	15.5	16.0	16.4
6H	14.8	15.2	15.2	15.6	16.0	15.0	15.4	15.4	15.8	16.3
8H	14.7	15.1	15.2	15.5	16.0	14.9	15.3	15.4	15.7	16.2
Variations with the observer position at spacings:										
S = 1.0H	+ 2.6 / -18.6					+ 2.6 / -18.6				
1.5H	+ 3.9 / - 8.6					+ 4.0 / - 8.7				
2.0H	+ 5.6 / -17.4					+ 5.8 / -18.5				

CIE Pub.117, 1681 lm Total Lamp Luminous Flux Correct (8log(F/F0) = 1.8)

C Range: 0 - 360DEG
 C Interval: 15.0DEG
 Test Speed: HIGH
 Temperature:25.3DEG
 Operators:Myles
 Test Date:2018-10-12

γ Range: 0 - 90DEG
 γ Interval: 1.0DEG
 Test System:EVERFINE GO-2000B_V1 SYSTEM V2.0.362
 Humidity:56%
 Test Distance:5.850m [K=1.0000]
 Remarks:

UTILIZATION FACTORS TABLE

Test:U:34.60V I:0.5000A P:17.30W PF:1.000 Freq:0Hz Lamp Flux:1681.2x1 lm		
NAME: TS150-18W-940	TYPE:Downlight	SERIAL No.:
SPEC.:4000K	DIM.: L168mm*W168mm*H80mm	
MFR.: NEKO LIGHTING AG		

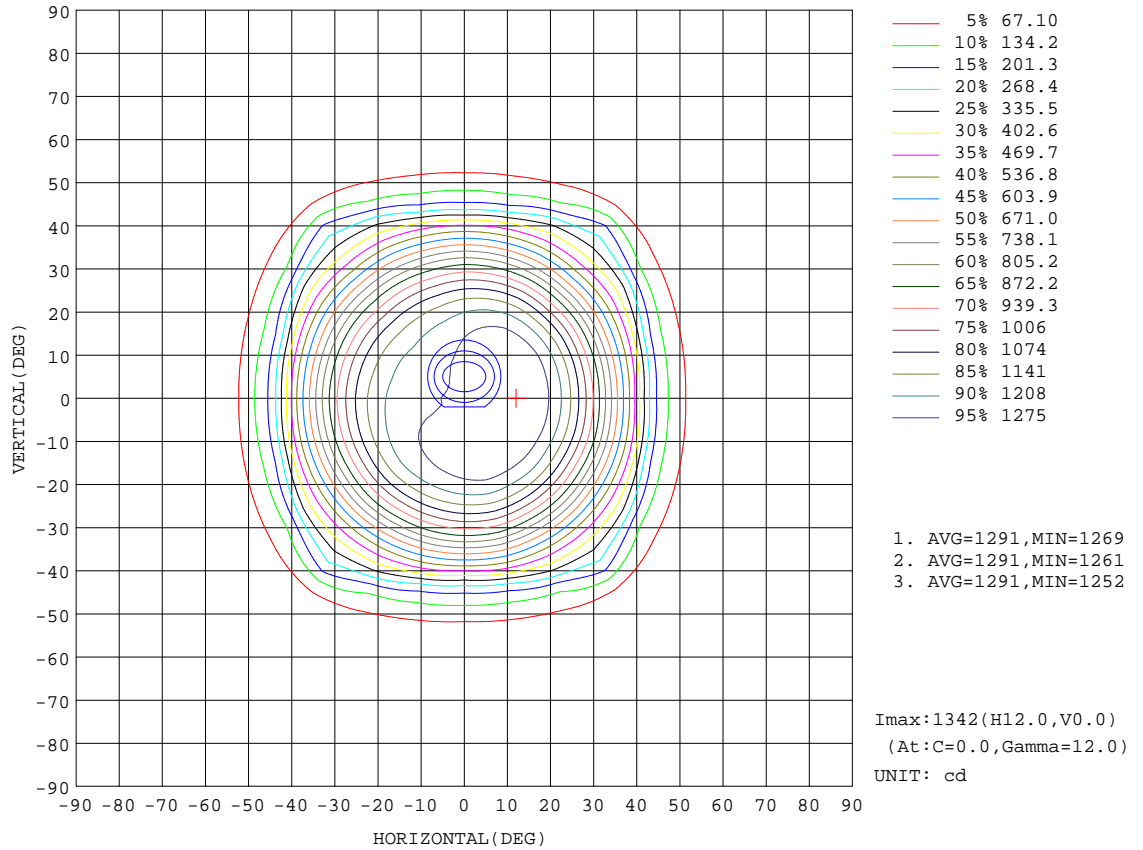
REFLECTANCE										
Ceiling	0.8	0.8	0.8	0.7	0.7	0.7	0.5	0.5	0.5	0
Walls	0.7	0.5	0.3	0.7	0.5	0.3	0.7	0.5	0.3	0
Working plane	0.2	0.2	0.2	0.2	0.2	0.2	0.2	0.2	0.2	0
ROOM INDEX	UTILIZATION FACTORS(PERCENT) $k(RI) \times RCR = 5$									
k = 0.60	82	74	70	81	74	70	80	74	70	66
0.80	90	83	79	89	83	79	88	82	79	74
1.00	96	90	85	95	89	85	93	89	85	80
1.25	101	95	91	100	94	91	98	93	90	85
1.50	104	99	95	103	98	94	100	96	93	88
2.00	107	103	99	106	102	98	103	100	97	91
2.50	109	105	102	107	104	101	104	101	99	93
3.00	111	107	104	109	106	103	106	103	101	94
4.00	113	110	107	111	108	106	107	105	103	96
5.00	114	112	109	112	110	108	108	106	105	97
ROOM INDEX	UF(total)									Direct
According to DIN EN 13032-2 2004			Suspended				SHRNOM = 1.25			

C Range: 0 - 360DEG
 C Interval: 15.0DEG
 Test Speed: HIGH
 Temperature:25.3DEG
 Operators:Myles
 Test Date:2018-10-12

γ Range: 0 - 90DEG
 γ Interval: 1.0DEG
 Test System:EVERFINE GO-2000B_V1 SYSTEM V2.0.362
 Humidity:56%
 Test Distance:5.850m [K=1.0000]
 Remarks:

ISOCANDELA DIAGRAM

Test:U:34.60V I:0.5000A P:17.30W PF:1.000 Freq:0Hz Lamp Flux:1681.2x1 lm		
NAME: TS150-18W-940	TYPE:Downlight	SERIAL No.:
SPEC.:4000K	DIM.: L168mm*W168mm*H80mm	
MFR.: NEKO LIGHTING AG		



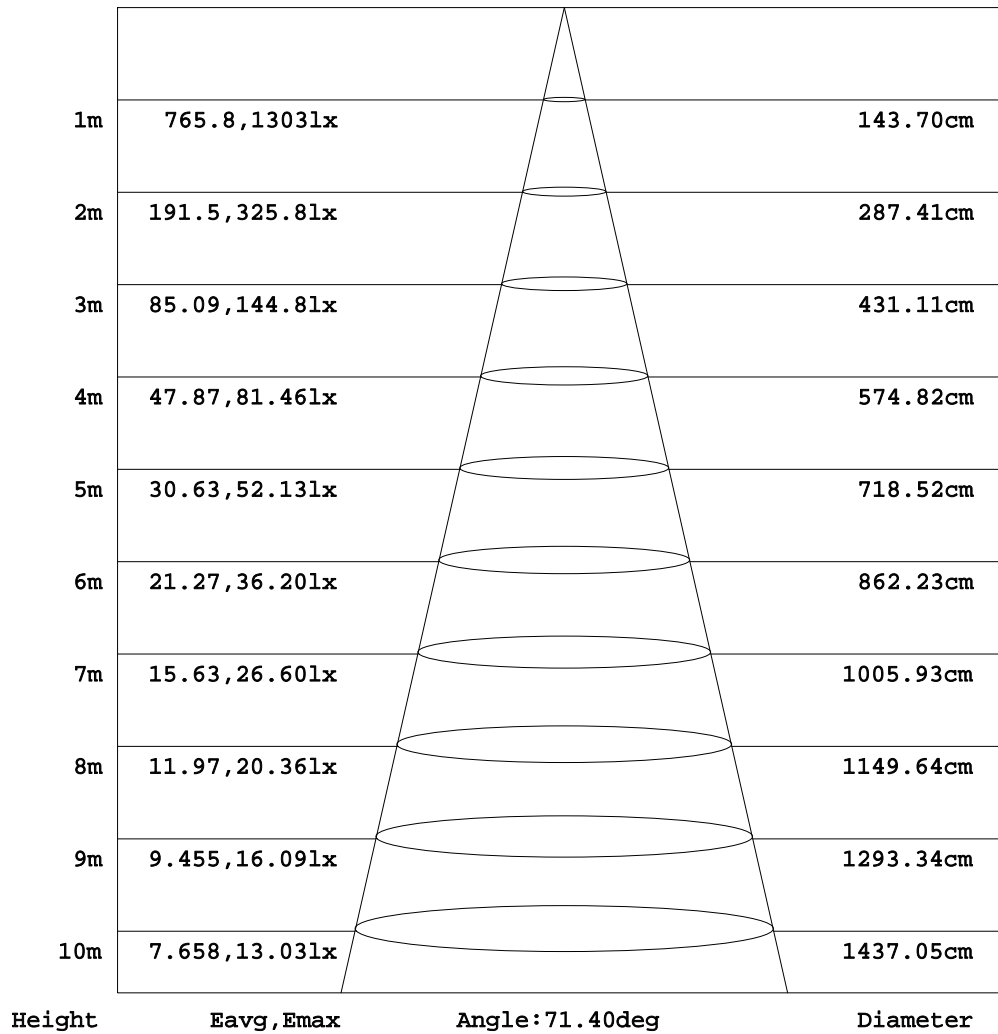
C Range: 0 - 360DEG
C Interval: 15.0DEG
Test Speed: HIGH
Temperature:25.3DEG
Operators:Myles
Test Date:2018-10-12

γ Range: 0 - 90DEG
γ Interval: 1.0DEG
Test System:EVERFINE GO-2000B_V1 SYSTEM V2.0.362
Humidity:56%
Test Distance:5.850m [K=1.0000]
Remarks:

AAI Figure

Test:U:34.60V I:0.5000A P:17.30W PF:1.000 Freq:0Hz Lamp Flux:1681.2x1 lm		
NAME: TS150-18W-940	TYPE:Downlight	SERIAL No.:
SPEC.:4000K	DIM.: L168mm*W168mm*H80mm	
MFR.: NEKO LIGHTING AG		

Flux out:1270 lm



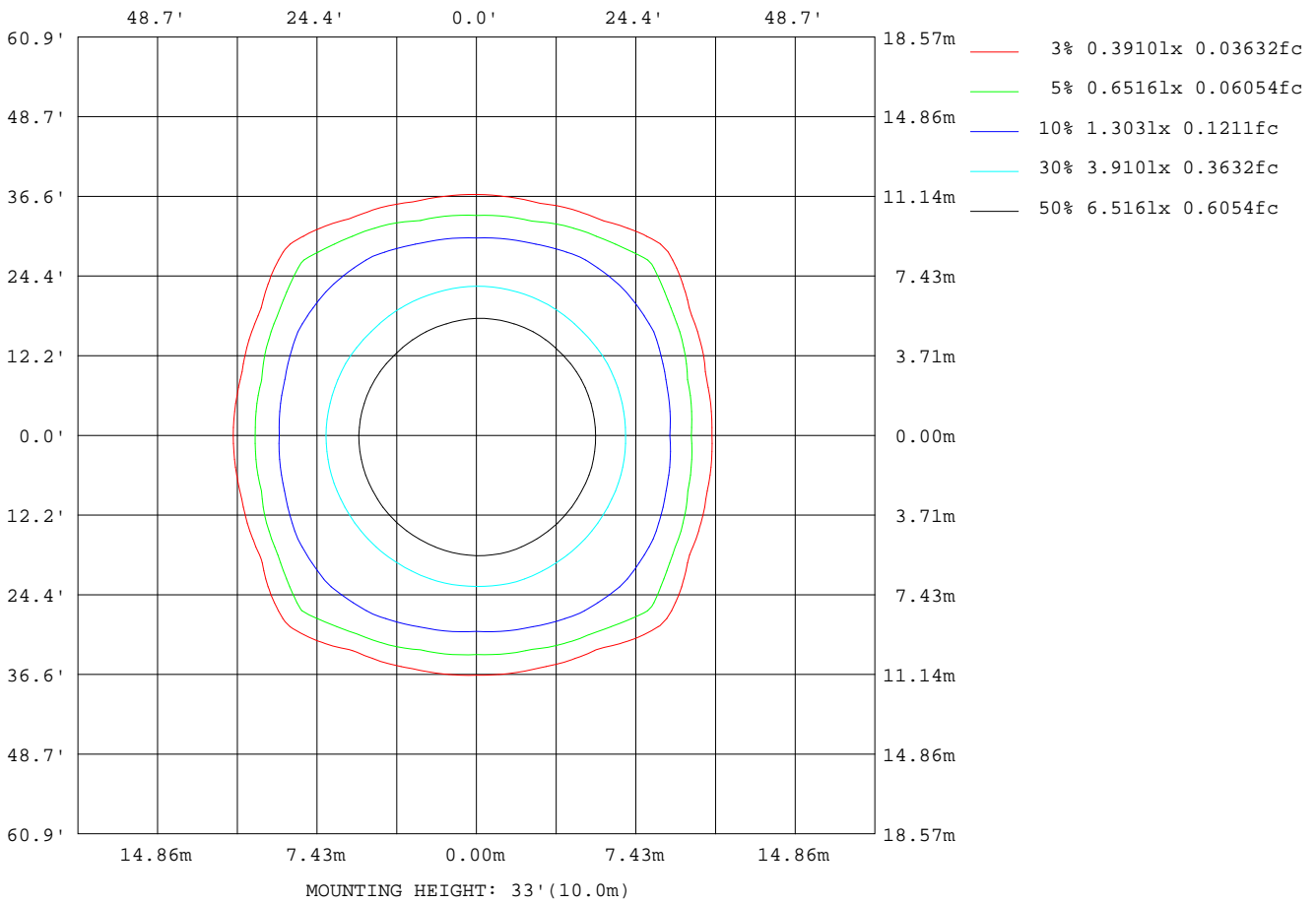
Note:The Curves indicate the illuminated area and the average illumination when the luminaire is at different distance.

C Range: 0 - 360DEG
C Interval: 15.0DEG
Test Speed: HIGH
Temperature:25.3DEG
Operators:Myles
Test Date:2018-10-12

γ Range: 0 - 90DEG
γ Interval: 1.0DEG
Test System:EVERFINE GO-2000B_V1 SYSTEM V2.0.362
Humidity:56%
Test Distance:5.850m [K=1.0000]
Remarks:

ISOLUX DIAGRAM

Test:U:34.60V I:0.5000A P:17.30W PF:1.000 Freq:0Hz Lamp Flux:1681.2x1 lm		
NAME: TS150-18W-940	TYPE:Downlight	SERIAL No.:
SPEC.:4000K	DIM.: L168mm*W168mm*H80mm	
MFR.: NEKO LIGHTING AG		



C Range: 0 - 360DEG
 C Interval: 15.0DEG
 Test Speed: HIGH
 Temperature:25.3DEG
 Operators:Myles
 Test Date:2018-10-12

γ Range: 0 - 90DEG
 γ Interval: 1.0DEG
 Test System:EVERFINE GO-2000B_V1 SYSTEM V2.0.362
 Humidity:56%
 Test Distance:5.850m [K=1.0000]
 Remarks:

LED Avg.L Report

Test:U:34.60V I:0.5000A P:17.30W PF:1.000 Freq:0Hz Lamp Flux:1681.2x1 lm		
NAME: TS150-18W-940	TYPE:Downlight	SERIAL No.:
SPEC.:4000K	DIM.: L168mm*W168mm*H80mm	
MFR.: NEKO LIGHTING AG		

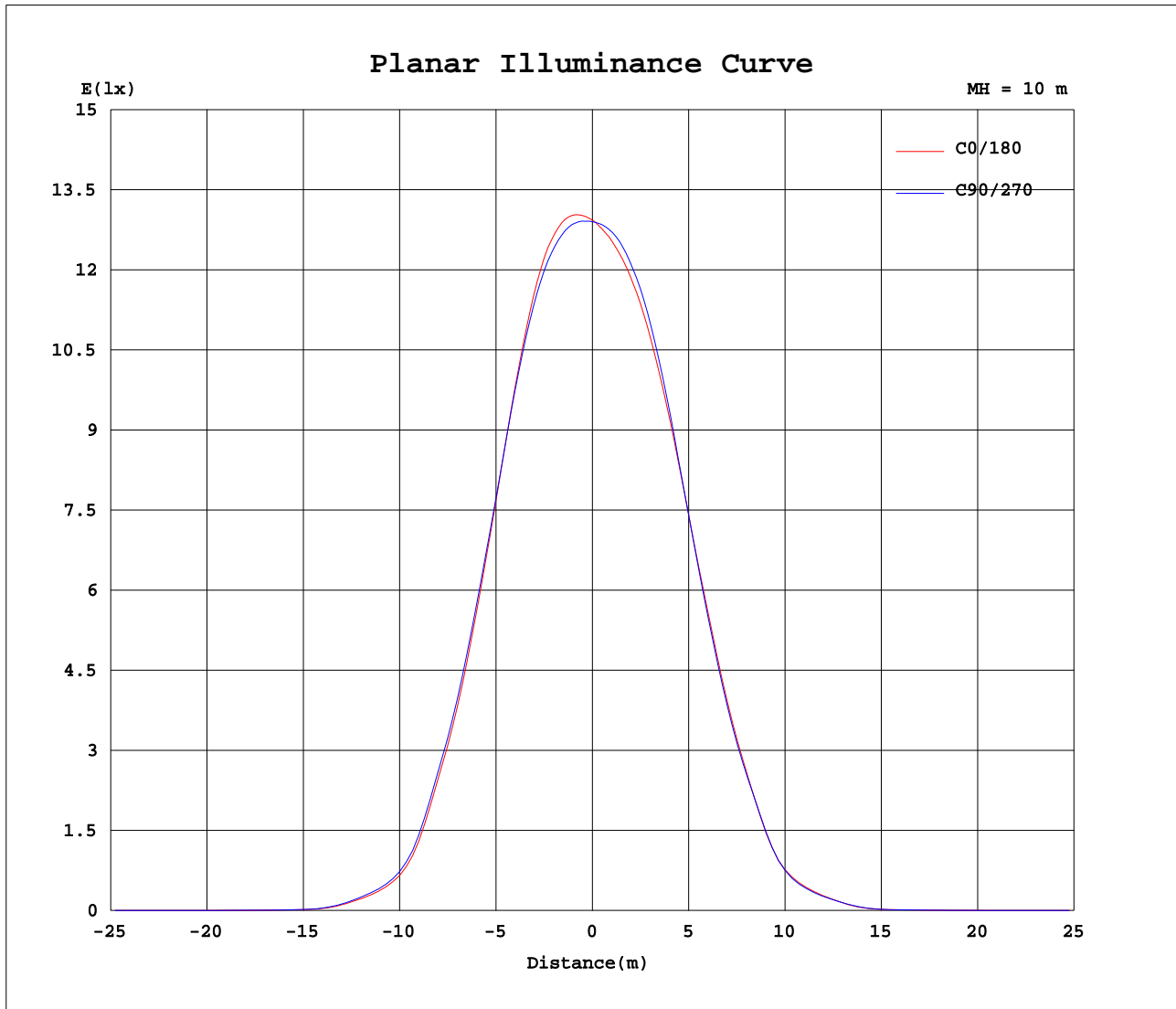
AvgL	cd/m2
L_0~180(65)av	141
L_0~180(75)av	82
L_0~180(85)av	64
L_90~270(65)av	124
L_90~270(75)av	66
L_90~270(85)av	47
L_45(65)av	202
L_45(75)av	86
L_45(85)av	57

Standard: GB/T 29293-2012

C Range: 0 - 360DEG
C Interval: 15.0DEG
Test Speed: HIGH
Temperature:25.3DEG
Operators:Myles
Test Date:2018-10-12

γ Range: 0 - 90DEG
γ Interval: 1.0DEG
Test System:EVERFINE GO-2000B_V1 SYSTEM V2.0.362
Humidity:56%
Test Distance:5.850m [K=1.0000]
Remarks:

Planar Illuminance Curve



C Range: 0 - 360DEG
 C Interval: 15.0DEG
 Test Speed: HIGH
 Temperature: 25.3DEG
 Operators: Myles
 Test Date: 2018-10-12

γ Range: 0 - 90DEG
 γ Interval: 1.0DEG
 Test System: EVERFINE GO-2000B_V1 SYSTEM V2.0.362
 Humidity: 56%
 Test Distance: 5.850m [K=1.0000]
 Remarks:

LUMINOUS DISTRIBUTION INTENSITY DATA

Test:U:34.60V I:0.5000A P:17.30W PF:1.000 Freq:0Hz Lamp Flux:1681.2x1 lm		
NAME: TS150-18W-940	TYPE:Downlight	SERIAL No.:
SPEC.:4000K	DIM.: L168mm*W168mm*H80mm	
MFR.: NEKO LIGHTING AG		

Table--1

UNIT: cd

C(DEG) γ (DEG)	0	15	30	45	60	75	90	105	120	135	150	165	180	195	210	225	240	255	270
0	1293	1292	1292	1291	1291	1290	1290	1290	1290	1290	1290	1290	1293	1292	1292	1291	1291	1290	1290
5	1318	1317	1317	1314	1312	1307	1303	1297	1291	1284	1279	1276	1276	1274	1273	1274	1279	1284	1290
10	1339	1338	1338	1336	1332	1324	1315	1305	1296	1286	1276	1266	1262	1256	1256	1258	1265	1274	1288
15	1333	1332	1330	1327	1325	1320	1309	1295	1284	1273	1261	1247	1238	1229	1228	1225	1233	1246	1269
20	1267	1267	1265	1267	1266	1268	1255	1241	1230	1221	1206	1191	1183	1172	1168	1162	1168	1181	1206
25	1130	1133	1130	1136	1139	1143	1131	1118	1108	1102	1091	1084	1080	1069	1060	1048	1054	1061	1083
30	934	940	932	940	945	958	952	940	926	923	916	920	923	909	898	883	889	893	912
35	695	706	701	708	714	730	722	719	709	707	704	711	712	703	697	680	687	687	698
40	442	474	488	493	497	495	470	492	499	499	498	489	475	483	495	481	489	480	475
45	186	207	283	333	290	222	207	225	299	341	298	226	216	224	301	329	311	230	214
50	88.2	93.5	106	195	110	102	100	105	118	205	119	108	109	109	121	202	128	107	104
55	16.1	22.1	43.1	54.6	44.2	25.4	18.7	26.9	47.9	62.4	51.0	28.5	22.6	28.2	52.7	65.6	54.0	31.1	24.5
60	5.71	6.51	6.77	12.6	6.49	6.61	6.35	7.20	7.38	15.8	8.38	7.49	6.97	7.49	8.89	17.8	8.99	7.78	7.30
65	1.56	1.46	1.96	2.10	1.84	1.25	1.43	1.66	2.12	2.64	2.46	1.73	1.81	1.72	2.66	2.66	2.51	1.69	1.53
70	0.92	0.92	0.95	0.91	0.88	0.78	0.82	1.01	1.16	1.16	1.18	1.12	1.09	1.12	1.18	1.18	1.16	1.04	0.85
75	0.54	0.56	0.59	0.55	0.54	0.47	0.49	0.59	0.70	0.70	0.74	0.71	0.66	0.72	0.74	0.73	0.70	0.62	0.48
80	0.29	0.30	0.33	0.28	0.29	0.25	0.27	0.30	0.36	0.38	0.42	0.41	0.36	0.41	0.41	0.40	0.36	0.32	0.25
85	0.16	0.15	0.16	0.13	0.14	0.11	0.14	0.13	0.16	0.15	0.19	0.19	0.16	0.19	0.15	0.16	0.13	0.12	0.10
90	0.09	0.09	0.09	0.09	0.09	0.09	0.09	0.09	0.09	0.09	0.09	0.09	0.05	0.05	0.05	0.05	0.05	0.05	0.05

C Range: 0 - 360DEG
 C Interval: 15.0DEG
 Test Speed: HIGH
 Temperature:25.3DEG
 Operators:Myles
 Test Date:2018-10-12

γ Range: 0 - 90DEG
 γ Interval: 1.0DEG
 Test System:EVERFINE GO-2000B_V1 SYSTEM V2.0.362
 Humidity:56%
 Test Distance:5.850m [K=1.0000]
 Remarks:

LUMINOUS DISTRIBUTION INTENSITY DATA

Test:U:34.60V I:0.5000A P:17.30W PF:1.000 Freq:0Hz Lamp Flux:1681.2x1 lm		
NAME: TS150-18W-940	TYPE:Downlight	SERIAL No.:
SPEC.:4000K	DIM.: L168mm*W168mm*H80mm	
MFR.: NEKO LIGHTING AG		

Table--2

UNIT: cd

C(DEG) γ (DEG)	285	300	315	330	345													
0	1290	1290	1290	1290	1290													
5	1296	1302	1307	1310	1313													
10	1304	1317	1329	1334	1336													
15	1291	1311	1323	1332	1332													
20	1231	1251	1261	1269	1267													
25	1101	1116	1117	1130	1131													
30	916	922	917	928	931													
35	697	696	686	698	697													
40	482	488	478	488	470													
45	225	304	325	292	205													
50	103	117	198	111	93.2													
55	29.6	49.4	59.5	45.8	22.3													
60	7.33	8.03	14.5	7.81	6.58													
65	1.35	2.08	2.23	2.10	1.49													
70	0.81	0.86	0.89	0.93	0.94													
75	0.48	0.50	0.54	0.56	0.58													
80	0.25	0.25	0.28	0.28	0.30													
85	0.11	0.10	0.12	0.11	0.14													
90	0.05	0.05	0.05	0.05	0.05													

C Range: 0 - 360DEG
C Interval: 15.0DEG
Test Speed: HIGH
Temperature:25.3DEG
Operators:Myles
Test Date:2018-10-12
γ Range: 0 - 90DEG
γ Interval: 1.0DEG
Test System:EVERFINE GO-2000B_V1 SYSTEM V2.0.362
Humidity:56%
Test Distance:5.850m [K=1.0000]
Remarks: