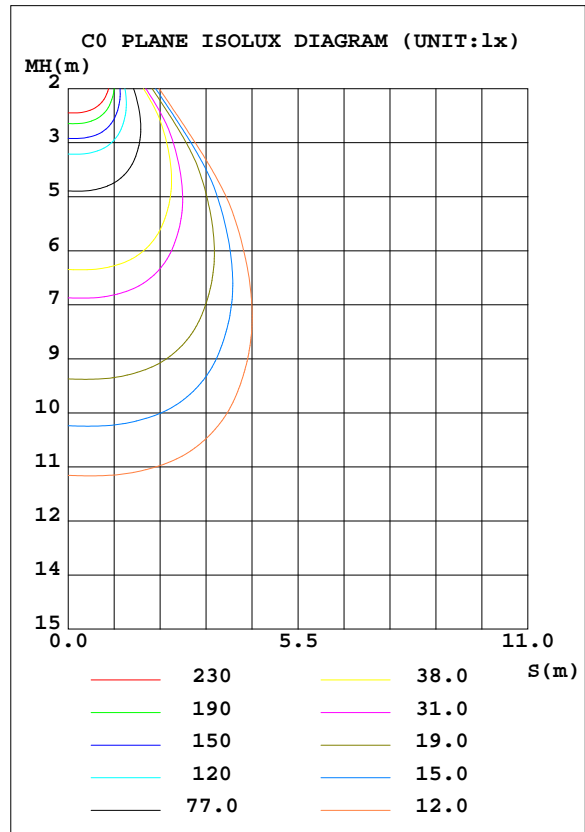
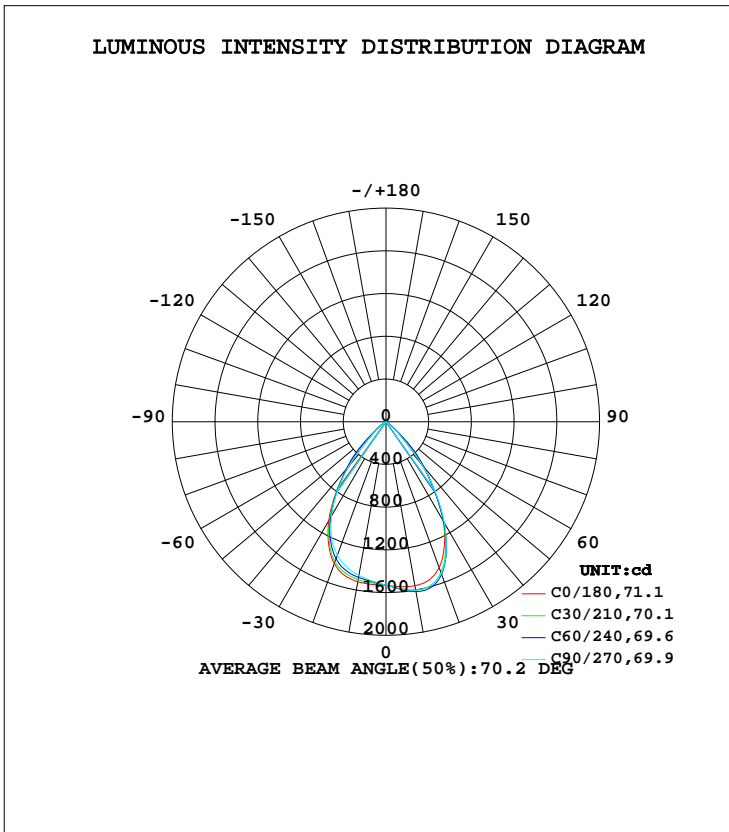


LUMINAIRE PHOTOMETRIC TEST REPORT

Test:U:34.80V I:0.5000A P:17.40W PF:1.000 Freq:0Hz Lamp Flux:1938.5x1 lm		
NAME: TS150-18W-840	TYPE:Downlight	SERIAL No.:
SPEC.:4000K	DIM.: L168mm*W168mm*H80mm	
MFR.: NEKO LIGHTING AG		

DATA OF LAMP		PHOTOMETRIC DATA Eff: 111.41 lm/W			
MODEL	CITIZEN-4000K	I <sub>max</sub> (cd)	1620	S/MH(C0/180)	1.05
NOMINAL POWER(W)	18	LOR(%)	100.0	S/MH(C90/270)	1.04
RATED VOLTAGE(V)	36.0	TOTAL FLUX(lm)	1938.5	η UP, DN(C0-180)	0.0,50.8
NOMINAL FLUX(lm)	1938.5	CIE CLASS	DIRECT	η UP, DN(C180-360)	0.0,49.2
LAMPS INSIDE	1	η up(%)	0.0	CIBSE SHR NOM	1.00
TEST VOLTAGE(V)	34.8	η down(%)	100.0	CIBSE SHR MAX	1.10



C Range: 0 - 360DEG  
 C Interval: 15.0DEG  
 Test Speed: HIGH  
 Temperature:25.3DEG  
 Operators:Myles  
 Test Date:2018-11-05

γ Range: 0 - 90DEG  
 γ Interval: 1.0DEG  
 Test System:EVERFINE GO-2000B\_V1 SYSTEM V2.0.362  
 Humidity:56%  
 Test Distance:5.850m [K=1.0000]  
 Remarks:

**ZONAL FLUX DIAGRAM**

ZONAL FLUX DIAGRAM:

$\gamma$	C0	C45	C90	C135	C180	C225	C270	C315	$\gamma$	$\Phi$ zone	$\Phi$ total	%lum,lamp
10	1558	1611	1603	1561	1521	1490	1461	1484	0- 10	146.6	146.6	7.56,7.56
20	1454	1520	1513	1457	1415	1377	1330	1358	10- 20	423.5	570.0	29.4,29.4
30	1074	1082	1091	1071	1074	1033	1024	1019	20- 30	579.5	1150	59.3,59.3
40	510.2	548.1	524.4	561.6	542.4	566.1	537.1	548.3	30- 40	498.2	1648	85,85
50	105.2	219.9	102.9	224.1	120.2	237.5	122.7	219.4	40- 50	238.8	1886	97.3,97.3
60	6.870	13.85	7.341	14.86	7.429	21.40	8.513	17.66	50- 60	47.69	1934	99.8,99.8
70	1.243	1.311	0.9479	1.040	1.125	1.171	1.046	1.418	60- 70	3.333	1938	99.9,99.9
80	0.4641	0.4455	0.3175	0.3385	0.3339	0.3831	0.3122	0.4663	70- 80	0.7807	1938	100,100
90	0.1356	0.1093	0.1050	0.1050	0.0568	0.0503	0.0481	0.0547	80- 90	0.2119	1939	100,100
100									90-100			
110									100-110			
120									110-120			
130									120-130			
140									130-140			
150									140-150			
160									150-160			
170									160-170			
180									170-180			
DEG	LUMINOUS INTENSITY:cd									UNIT:lm		

Conical surface Flux(90deg): 1802.5 lm

%lum = 93.0%  
%lamp = 93.0%

Conical surface Flux(120deg): 1934.2 lm

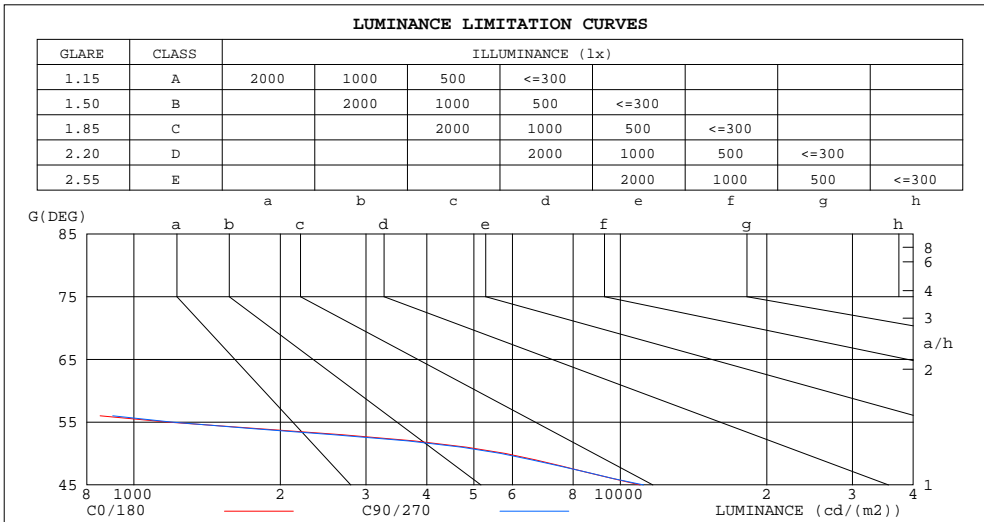
%lum = 99.8%  
%lamp = 99.8%

C Range: 0 - 360DEG  
C Interval: 15.0DEG  
Test Speed: HIGH  
Temperature:25.3DEG  
Operators:Myles  
Test Date:2018-11-05

$\gamma$  Range: 0 - 90DEG  
 $\gamma$  Interval: 1.0DEG  
Test System:EVERFINE GO-2000B\_V1 SYSTEM V2.0.362  
Humidity:56%  
Test Distance:5.850m [K=1.0000]  
Remarks:

**LUMINANCE LIMITATION CURVES**

Test:U:34.80V I:0.5000A P:17.40W PF:1.000 Freq:0Hz Lamp Flux:1938.5x1 lm		
NAME: TS150-18W-840	TYPE:Downlight	SERIAL No.:
SPEC.:4000K	DIM.: L168mm*W168mm*H80mm	
MFR.: NEKO LIGHTING AG		



LUMINANCE cd/(m2)		
G(DEG)	C0/180	C90/270
85	103	67
80	95	65
75	107	77
70	129	98
65	170	141
60	487	520
55	1171	1193
50	5797	5672
45	10990	11163

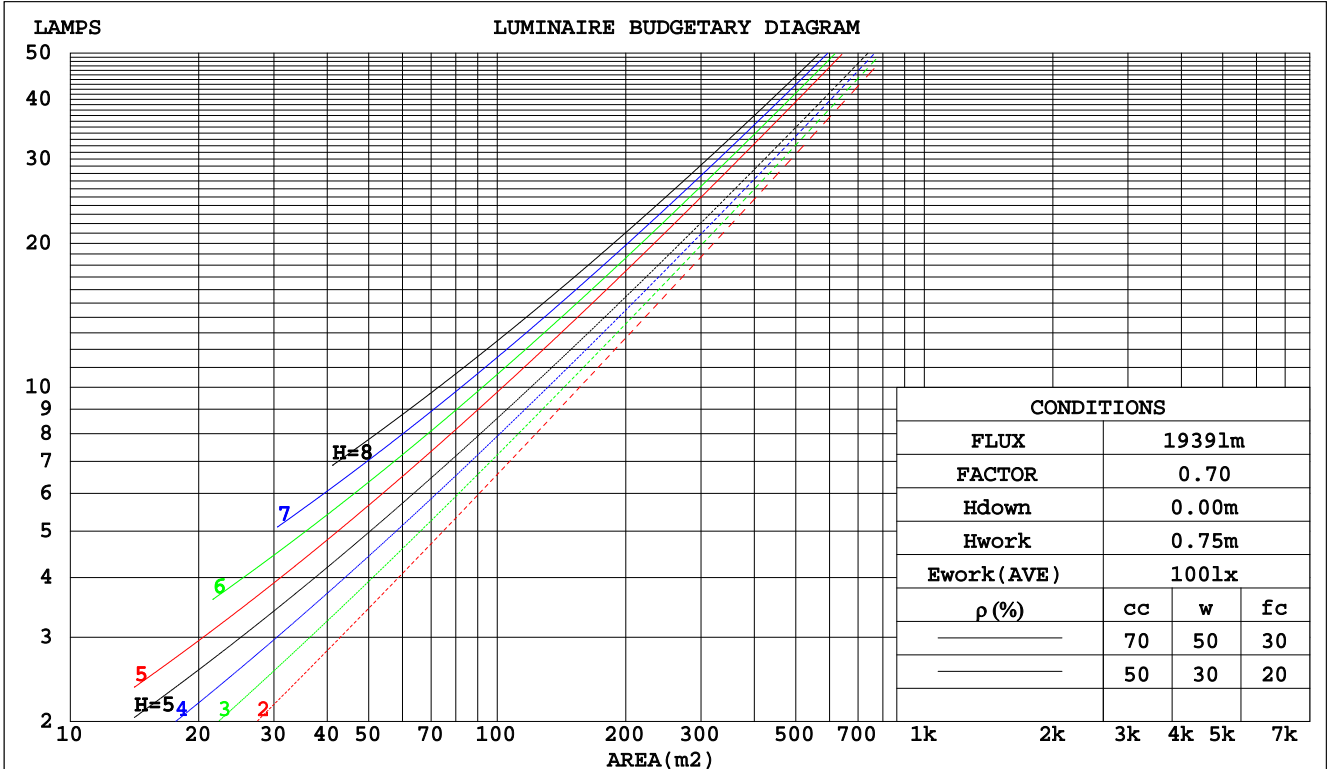
C Range: 0 - 360DEG  
 C Interval: 15.0DEG  
 Test Speed: HIGH  
 Temperature: 25.3DEG  
 Operators: Myles  
 Test Date: 2018-11-05

$\gamma$  Range: 0 - 90DEG  
 $\gamma$  Interval: 1.0DEG  
 Test System: EVERFINE GO-2000B\_V1 SYSTEM V2.0.362  
 Humidity: 56%  
 Test Distance: 5.850m [K=1.0000]  
 Remarks:

**CU AND LUMINAIRE BUDGETARY ESTIMATE DIAGRAM**

Test:U:34.80V I:0.5000A P:17.40W PF:1.000 Freq:0Hz Lamp Flux:1938.5x1 lm		
NAME: TS150-18W-840	TYPE:Downlight	SERIAL No.:
SPEC.:4000K	DIM.: L168mm*W168mm*H80mm	
MFR.: NEKO LIGHTING AG		

pcc	80%			70%			50%			30%			10%			0
pw	50%	30%	10%	50%	30%	10%	50%	30%	10%	50%	30%	10%	50%	30%	10%	0
pfc	20%			20%			20%			20%			20%			0
RCR	RCR:Room Cavity Ratio															
	Coefficients of Utilization(CU)															
0.0	1.19	1.19	1.19	1.16	1.16	1.16	1.11	1.11	1.11	1.06	1.06	1.06	1.02	1.02	1.02	.00
1.0	1.10	1.07	1.05	1.08	1.06	1.03	1.04	1.02	1.00	1.00	.99	.97	.97	.96	.94	.93
2.0	1.02	.97	.94	.90	.96	.93	.97	.93	.91	.94	.91	.89	.91	.89	.87	.85
3.0	.94	.88	.84	.92	.87	.83	.90	.86	.82	.87	.84	.81	.85	.82	.80	.78
4.0	.87	.81	.76	.86	.80	.76	.83	.79	.75	.81	.77	.74	.80	.76	.73	.71
5.0	.80	.74	.69	.80	.74	.69	.78	.72	.68	.76	.71	.68	.74	.70	.67	.66
6.0	.75	.68	.64	.74	.68	.63	.72	.67	.63	.71	.66	.62	.70	.65	.62	.60
7.0	.70	.63	.58	.69	.63	.58	.68	.62	.58	.66	.61	.58	.65	.61	.57	.56
8.0	.65	.58	.54	.64	.58	.54	.63	.58	.54	.62	.57	.53	.61	.57	.53	.52
9.0	.61	.54	.50	.60	.54	.50	.59	.54	.50	.58	.53	.50	.57	.53	.49	.48
10.0	.57	.51	.47	.57	.51	.46	.56	.50	.46	.55	.50	.46	.54	.49	.46	.45



C Range: 0 - 360DEG  
C Interval: 15.0DEG  
Test Speed: HIGH  
Temperature: 25.3DEG  
Operators: Myles  
Test Date: 2018-11-05

γ Range: 0 - 90DEG  
γ Interval: 1.0DEG  
Test System: EVERFINE GO-2000B\_V1 SYSTEM V2.0.362  
Humidity: 56%  
Test Distance: 5.850m [K=1.0000]  
Remarks:

WEC AND CCEC

Test:U:34.80V I:0.5000A P:17.40W PF:1.000 Freq:0Hz Lamp Flux:1938.5x1 lm		
NAME: TS150-18W-840	TYPE:Downlight	SERIAL No.:
SPEC.:4000K	DIM.: L168mm*W168mm*H80mm	
MFR.: NEKO LIGHTING AG		

ρcc	80%			70%			50%			30%			10%			0
ρw	50%	30%	10%	50%	30%	10%	50%	30%	10%	50%	30%	10%	50%	30%	10%	0
ρfc	20%			20%			20%			20%			20%			0
RCR	RCR:Room Cavity Ratio						Wall Exitance Coefficients(WEC)									
0.0																
1.0	.190	.108	.034	.184	.105	.033	.171	.098	.031	.159	.092	.029	.149	.086	.028	
2.0	.185	.101	.031	.179	.098	.030	.168	.093	.029	.158	.089	.028	.149	.084	.027	
3.0	.177	.094	.028	.172	.092	.028	.163	.088	.027	.154	.085	.026	.146	.081	.025	
4.0	.169	.088	.026	.165	.086	.026	.157	.083	.025	.150	.080	.024	.143	.078	.024	
5.0	.162	.082	.024	.158	.081	.024	.151	.079	.023	.145	.076	.023	.138	.074	.022	
6.0	.155	.078	.022	.151	.076	.022	.145	.074	.022	.139	.072	.021	.134	.070	.021	
7.0	.148	.073	.021	.145	.072	.021	.139	.070	.020	.134	.069	.020	.129	.067	.020	
8.0	.141	.069	.019	.139	.068	.019	.134	.067	.019	.129	.065	.019	.125	.064	.019	
9.0	.135	.065	.018	.133	.065	.018	.128	.064	.018	.124	.062	.018	.120	.061	.018	
10.0	.130	.062	.017	.128	.062	.017	.123	.060	.017	.120	.059	.017	.116	.058	.017	

ρcc	80%			70%			50%			30%			10%			0
ρw	50%	30%	10%	50%	30%	10%	50%	30%	10%	50%	30%	10%	50%	30%	10%	0
ρfc	20%			20%			20%			20%			20%			0
RCR	RCR:Room Cavity Ratio						Ceiling Cavity Exitance Coefficients(CCEC)									
0.0	.190	.190	.190	.163	.163	.163	.111	.111	.111	.064	.064	.064	.020	.020	.020	
1.0	.172	.157	.144	.147	.135	.124	.101	.093	.086	.058	.054	.050	.019	.017	.016	
2.0	.158	.132	.111	.135	.114	.096	.093	.079	.067	.053	.046	.039	.017	.015	.013	
3.0	.147	.114	.087	.126	.098	.076	.086	.068	.053	.050	.040	.031	.016	.013	.010	
4.0	.137	.099	.070	.118	.086	.061	.081	.060	.043	.047	.035	.025	.015	.011	.008	
5.0	.129	.088	.057	.111	.076	.050	.076	.053	.035	.044	.031	.021	.014	.010	.007	
6.0	.122	.079	.048	.105	.068	.041	.073	.048	.029	.042	.028	.017	.014	.009	.006	
7.0	.116	.071	.040	.100	.062	.035	.069	.043	.025	.040	.026	.015	.013	.008	.005	
8.0	.111	.065	.034	.095	.057	.030	.066	.040	.021	.038	.024	.013	.012	.008	.004	
9.0	.106	.060	.030	.091	.052	.026	.063	.037	.018	.037	.022	.011	.012	.007	.004	
10.0	.101	.056	.026	.087	.049	.023	.061	.034	.016	.035	.020	.010	.011	.007	.003	

C Range: 0 - 360DEG  
 C Interval: 15.0DEG  
 Test Speed: HIGH  
 Temperature:25.3DEG  
 Operators:Myles  
 Test Date:2018-11-05

γ Range: 0 - 90DEG  
 γ Interval: 1.0DEG  
 Test System:EVERFINE GO-2000B\_V1 SYSTEM V2.0.362  
 Humidity:56%  
 Test Distance:5.850m [K=1.0000]  
 Remarks:

UGR(Unified Glare Rating) Table

Test:U:34.80V I:0.5000A P:17.40W PF:1.000 Freq:0Hz Lamp Flux:1938.5x1 lm		
NAME: TS150-18W-840	TYPE:Downlight	SERIAL No.:
SPEC.:4000K	DIM.: L168mm*W168mm*H80mm	
MFR.: NEKO LIGHTING AG		

ceiling/cavity	0.7	0.7	0.5	0.5	0.3	0.7	0.7	0.5	0.5	0.3
walls	0.5	0.3	0.5	0.3	0.3	0.5	0.3	0.5	0.3	0.3
working plane	0.2	0.2	0.2	0.2	0.2	0.2	0.2	0.2	0.2	0.2
Room dimensions	Viewed crosswise					Viewed endwise				
x = 2H y = 2H	15.5	16.5	15.7	16.7	16.9	15.6	16.6	15.8	16.8	17.0
3H	15.3	16.3	15.6	16.5	16.7	15.4	16.4	15.7	16.6	16.8
4H	15.2	16.1	15.5	16.3	16.6	15.3	16.2	15.6	16.4	16.7
6H	15.1	16.0	15.4	16.2	16.5	15.2	16.1	15.5	16.3	16.6
8H	15.1	15.9	15.4	16.1	16.4	15.2	16.0	15.5	16.2	16.5
12H	15.0	15.8	15.4	16.1	16.4	15.1	15.9	15.5	16.2	16.5
4H 2H	15.2	16.1	15.5	16.4	16.6	15.3	16.2	15.6	16.5	16.7
3H	15.0	15.8	15.4	16.1	16.4	15.1	15.9	15.5	16.2	16.5
4H	15.0	15.7	15.3	16.0	16.3	15.1	15.8	15.4	16.1	16.4
6H	14.9	15.5	15.2	15.8	16.2	15.0	15.6	15.3	15.9	16.3
8H	14.8	15.4	15.2	15.7	16.1	14.9	15.5	15.3	15.8	16.2
12H	14.8	15.3	15.2	15.7	16.0	14.9	15.4	15.3	15.8	16.1
8H 4H	14.8	15.4	15.2	15.7	16.1	14.9	15.5	15.3	15.8	16.2
6H	14.7	15.2	15.1	15.6	16.0	14.8	15.3	15.2	15.7	16.1
8H	14.7	15.1	15.1	15.5	15.9	14.8	15.2	15.2	15.6	16.0
12H	14.6	15.0	15.1	15.4	15.9	14.7	15.1	15.2	15.5	16.0
12H 4H	14.8	15.3	15.2	15.7	16.0	14.9	15.4	15.3	15.8	16.1
6H	14.7	15.1	15.1	15.5	15.9	14.8	15.2	15.2	15.6	16.0
8H	14.6	15.0	15.1	15.4	15.9	14.7	15.1	15.2	15.5	16.0
Variations with the observer position at spacings:										
S = 1.0H	+ 2.6 / -18.1					+ 2.6 / -18.1				
1.5H	+ 4.0 / - 8.8					+ 4.0 / - 8.8				
2.0H	+ 5.7 / -16.5					+ 5.8 / -16.9				

CIE Pub.117, 1939 lm Total Lamp Luminous Flux Correct (8log(F/F0) = 2.3)

C Range: 0 - 360DEG  
 C Interval: 15.0DEG  
 Test Speed: HIGH  
 Temperature:25.3DEG  
 Operators:Myles  
 Test Date:2018-11-05

γ Range: 0 - 90DEG  
 γ Interval: 1.0DEG  
 Test System:EVERFINE GO-2000B\_V1 SYSTEM V2.0.362  
 Humidity:56%  
 Test Distance:5.850m [K=1.0000]  
 Remarks:

**UTILIZATION FACTORS TABLE**

Test:U:34.80V I:0.5000A P:17.40W PF:1.000 Freq:0Hz Lamp Flux:1938.5x1 lm		
NAME: TS150-18W-840	TYPE:Downlight	SERIAL No.:
SPEC.:4000K	DIM.: L168mm*W168mm*H80mm	
MFR.: NEKO LIGHTING AG		

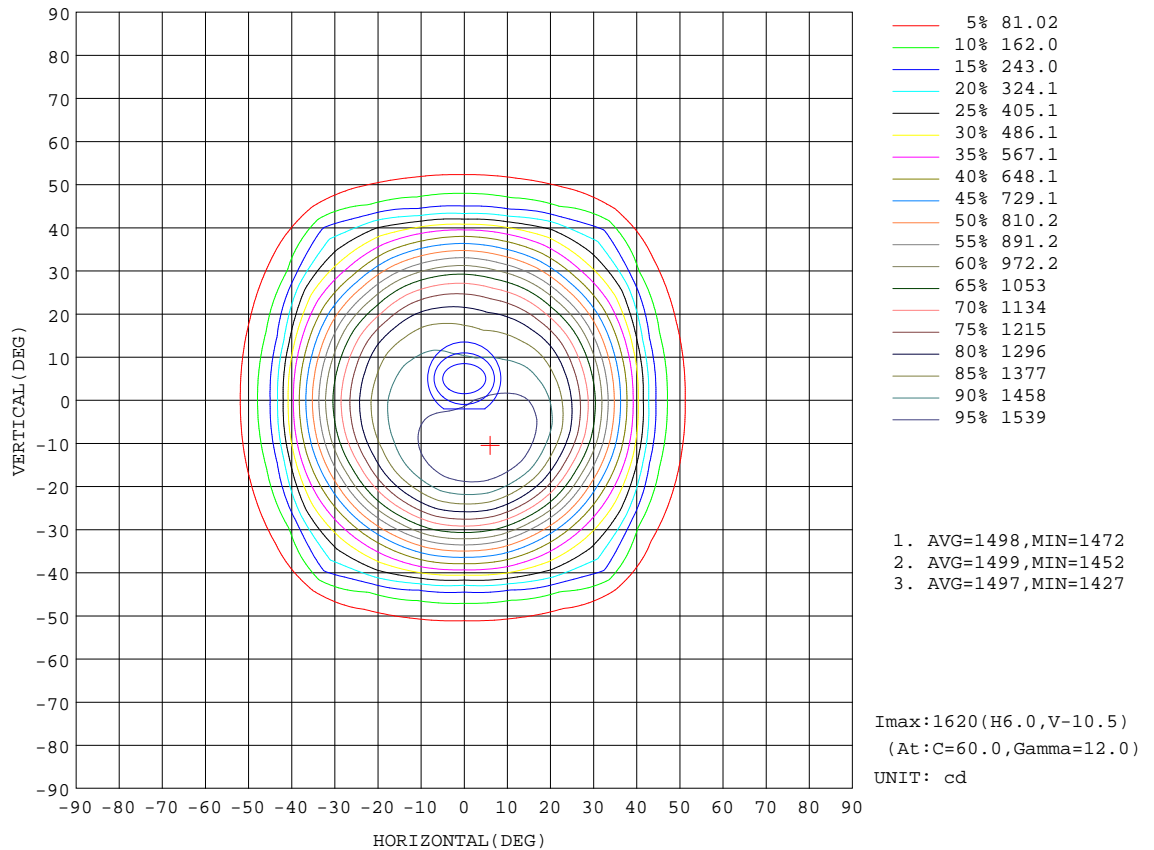
REFLECTANCE										
Ceiling	0.8	0.8	0.8	0.7	0.7	0.7	0.5	0.5	0.5	0
Walls	0.7	0.5	0.3	0.7	0.5	0.3	0.7	0.5	0.3	0
Working plane	0.2	0.2	0.2	0.2	0.2	0.2	0.2	0.2	0.2	0
ROOM INDEX	UTILIZATION FACTORS(PERCENT) $k(RI) \times RCR = 5$									
k = 0.60	82	75	70	81	74	70	81	74	70	66
0.80	90	84	79	90	83	79	88	83	79	75
1.00	96	90	86	95	89	85	94	89	85	80
1.25	101	95	91	100	94	91	98	93	90	85
1.50	104	99	95	103	98	94	100	96	93	89
2.00	107	103	99	106	102	98	103	100	97	92
2.50	109	105	102	107	104	101	104	101	99	93
3.00	111	107	104	109	106	103	106	103	101	94
4.00	113	110	107	111	108	106	107	105	103	96
5.00	114	112	110	112	110	108	108	106	105	97
ROOM INDEX	UF(total)									Direct
According to DIN EN 13032-2 2004			Suspended				SHRNOM = 1.25			

C Range: 0 - 360DEG  
 C Interval: 15.0DEG  
 Test Speed: HIGH  
 Temperature:25.3DEG  
 Operators:Myles  
 Test Date:2018-11-05

$\gamma$  Range: 0 - 90DEG  
 $\gamma$  Interval: 1.0DEG  
 Test System:EVERFINE GO-2000B\_V1 SYSTEM V2.0.362  
 Humidity:56%  
 Test Distance:5.850m [K=1.0000]  
 Remarks:

**ISOCANDELA DIAGRAM**

Test:U:34.80V I:0.5000A P:17.40W PF:1.000 Freq:0Hz Lamp Flux:1938.5x1 lm		
NAME: TS150-18W-840	TYPE:Downlight	SERIAL No.:
SPEC.:4000K	DIM.: L168mm*W168mm*H80mm	
MFR.: NEKO LIGHTING AG		



C Range: 0 - 360DEG  
C Interval: 15.0DEG  
Test Speed: HIGH  
Temperature:25.3DEG  
Operators:Myles  
Test Date:2018-11-05

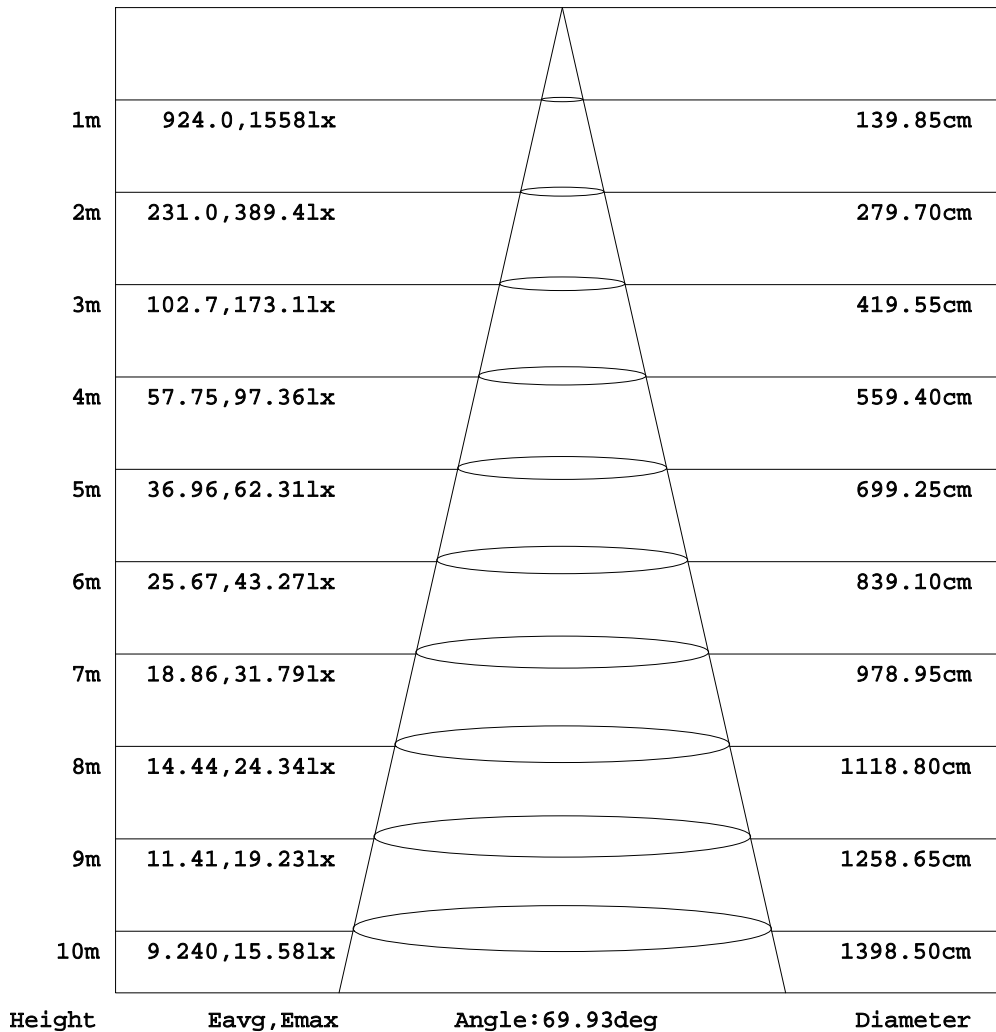
γ Range: 0 - 90DEG  
γ Interval: 1.0DEG  
Test System:EVERFINE GO-2000B\_V1 SYSTEM V2.0.362  
Humidity:56%  
Test Distance:5.850m [K=1.0000]  
Remarks:



**AAI Figure**

Test:U:34.80V I:0.5000A P:17.40W PF:1.000 Freq:0Hz Lamp Flux:1938.5x1 lm		
NAME: TS150-18W-840	TYPE:Downlight	SERIAL No.:
SPEC.:4000K	DIM.: L168mm*W168mm*H80mm	
MFR.: NEKO LIGHTING AG		

Flux out:1423 lm



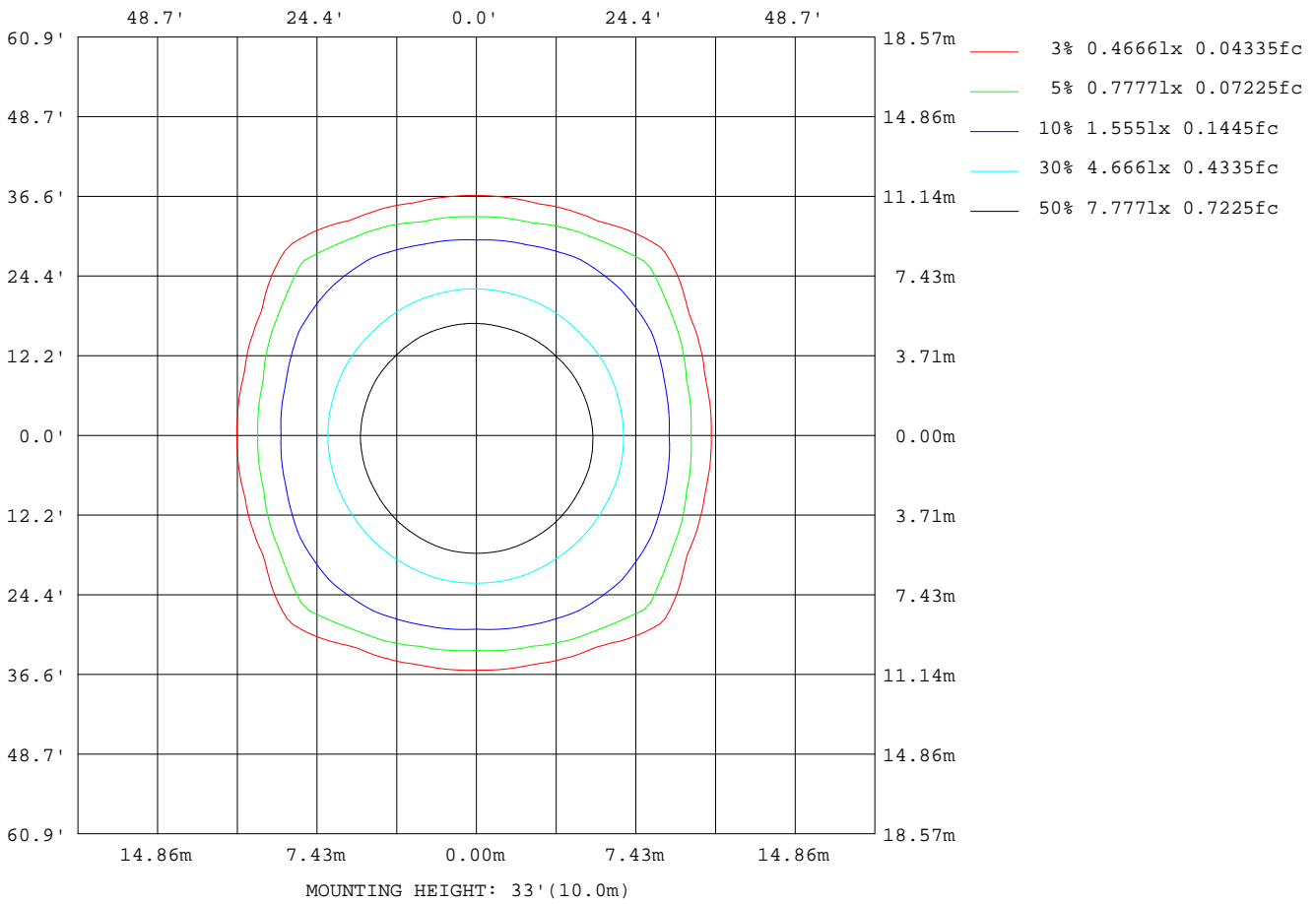
Note:The Curves indicate the illuminated area and the average illumination when the luminaire is at different distance.

C Range: 0 - 360DEG  
C Interval: 15.0DEG  
Test Speed: HIGH  
Temperature:25.3DEG  
Operators:Myles  
Test Date:2018-11-05

γ Range: 0 - 90DEG  
γ Interval: 1.0DEG  
Test System:EVERFINE GO-2000B\_V1 SYSTEM V2.0.362  
Humidity:56%  
Test Distance:5.850m [K=1.0000]  
Remarks:

**ISOLUX DIAGRAM**

Test:U:34.80V I:0.5000A P:17.40W PF:1.000 Freq:0Hz Lamp Flux:1938.5x1 lm		
NAME: TS150-18W-840	TYPE:Downlight	SERIAL No.:
SPEC.:4000K	DIM.: L168mm*W168mm*H80mm	
MFR.: NEKO LIGHTING AG		



C Range: 0 - 360DEG  
 C Interval: 15.0DEG  
 Test Speed: HIGH  
 Temperature:25.3DEG  
 Operators:Myles  
 Test Date:2018-11-05

γ Range: 0 - 90DEG  
 γ Interval: 1.0DEG  
 Test System:EVERFINE GO-2000B\_V1 SYSTEM V2.0.362  
 Humidity:56%  
 Test Distance:5.850m [K=1.0000]  
 Remarks:

LED Avg.L Report

Test:U:34.80V I:0.5000A P:17.40W PF:1.000 Freq:0Hz Lamp Flux:1938.5x1 lm		
NAME: TS150-18W-840	TYPE:Downlight	SERIAL No.:
SPEC.:4000K	DIM.: L168mm*W168mm*H80mm	
MFR.: NEKO LIGHTING AG		

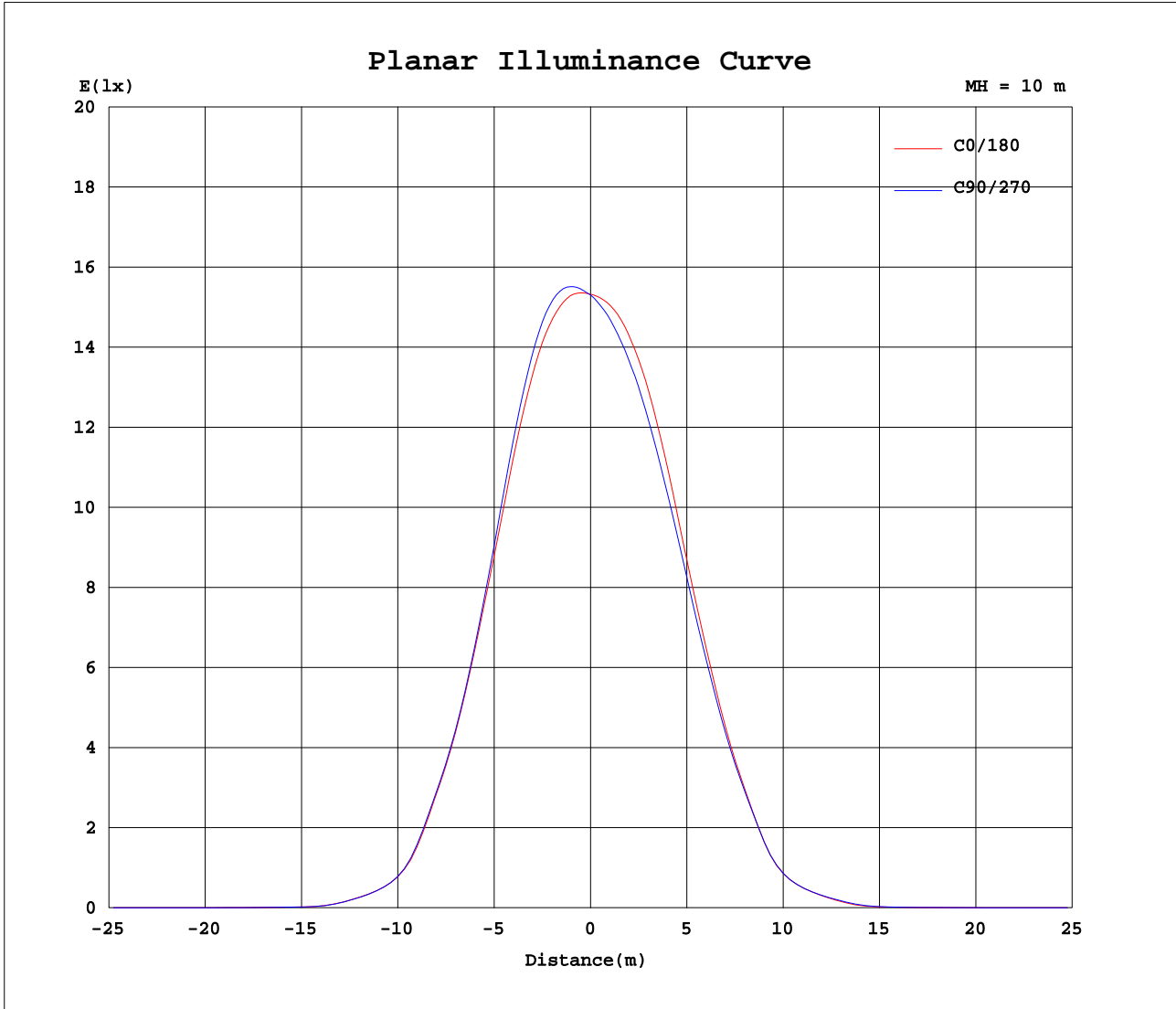
AvgL	cd/m2
L_0~180(65)av	165
L_0~180(75)av	97
L_0~180(85)av	80
L_90~270(65)av	148
L_90~270(75)av	79
L_90~270(85)av	59
L_45(65)av	237
L_45(75)av	103
L_45(85)av	70

Standard: GB/T 29293-2012

C Range: 0 - 360DEG  
C Interval: 15.0DEG  
Test Speed: HIGH  
Temperature:25.3DEG  
Operators:Myles  
Test Date:2018-11-05

$\gamma$  Range: 0 - 90DEG  
 $\gamma$  Interval: 1.0DEG  
Test System:EVERFINE GO-2000B\_V1 SYSTEM V2.0.362  
Humidity:56%  
Test Distance:5.850m [K=1.0000]  
Remarks:

Planar Illuminance Curve



C Range: 0 - 360DEG  
 C Interval: 15.0DEG  
 Test Speed: HIGH  
 Temperature: 25.3DEG  
 Operators: Myles  
 Test Date: 2018-11-05

$\gamma$  Range: 0 - 90DEG  
 $\gamma$  Interval: 1.0DEG  
 Test System: EVERFINE GO-2000B\_V1 SYSTEM V2.0.362  
 Humidity: 56%  
 Test Distance: 5.850m [K=1.0000]  
 Remarks:

LUMINOUS DISTRIBUTION INTENSITY DATA

Test:U:34.80V I:0.5000A P:17.40W PF:1.000 Freq:0Hz Lamp Flux:1938.5x1 lm		
NAME: TS150-18W-840	TYPE:Downlight	SERIAL No.:
SPEC.:4000K	DIM.: L168mm*W168mm*H80mm	
MFR.: NEKO LIGHTING AG		

Table--1

UNIT: cd

C (DEG) γ (DEG)	0	15	30	45	60	75	90	105	120	135	150	165	180	195	210	225	240	255	270
0	1533	1532	1532	1531	1531	1530	1530	1530	1530	1529	1529	1529	1533	1532	1532	1531	1531	1530	1530
5	1550	1558	1567	1572	1574	1571	1569	1563	1556	1547	1538	1531	1529	1521	1514	1507	1503	1499	1498
10	1558	1580	1599	1611	1614	1610	1603	1591	1577	1561	1544	1528	1521	1510	1502	1490	1480	1468	1461
15	1538	1570	1591	1604	1609	1606	1596	1582	1562	1539	1515	1501	1492	1478	1468	1455	1443	1425	1412
20	1454	1487	1503	1520	1521	1522	1513	1502	1479	1457	1433	1421	1415	1402	1396	1377	1366	1346	1330
25	1291	1318	1321	1335	1339	1346	1336	1336	1313	1296	1276	1275	1270	1258	1255	1234	1230	1216	1204
30	1074	1083	1069	1082	1081	1094	1091	1094	1076	1071	1058	1069	1074	1060	1054	1033	1036	1027	1024
35	798	805	790	796	798	813	808	817	805	805	804	819	822	815	816	797	804	798	796
40	510	538	545	548	553	549	524	550	560	562	564	557	542	558	579	566	574	554	537
45	219	237	316	371	328	243	223	244	330	380	331	254	243	256	352	388	359	262	244
50	105	108	118	220	122	107	103	109	125	224	128	120	120	123	144	238	147	125	123
55	19.0	26.3	47.7	60.3	47.2	26.9	19.3	25.5	48.8	64.2	53.5	29.1	23.6	31.3	60.2	73.8	64.3	38.8	29.8
60	6.87	7.56	7.99	13.8	8.36	8.24	7.34	7.79	7.70	14.9	8.07	7.87	7.43	8.07	9.61	21.4	10.9	8.51	8.51
65	2.02	1.90	2.55	2.83	2.58	1.86	1.68	1.53	2.08	2.41	2.36	1.78	1.92	1.81	2.85	2.96	2.70	1.59	1.85
70	1.24	1.25	1.32	1.31	1.29	1.13	0.95	0.93	1.00	1.04	1.11	1.13	1.12	1.15	1.21	1.17	1.11	1.01	1.05
75	0.78	0.80	0.84	0.80	0.78	0.66	0.56	0.55	0.61	0.62	0.69	0.70	0.64	0.71	0.74	0.72	0.68	0.62	0.60
80	0.46	0.47	0.48	0.45	0.42	0.35	0.32	0.29	0.33	0.34	0.39	0.39	0.33	0.38	0.39	0.38	0.35	0.33	0.31
85	0.25	0.23	0.23	0.19	0.18	0.15	0.16	0.14	0.17	0.15	0.19	0.19	0.14	0.17	0.15	0.16	0.14	0.14	0.12
90	0.14	0.12	0.11	0.11	0.10	0.10	0.10	0.10	0.10	0.10	0.10	0.10	0.06	0.06	0.05	0.05	0.05	0.05	0.05

C Range: 0 - 360DEG	γ Range: 0 - 90DEG
C Interval: 15.0DEG	γ Interval: 1.0DEG
Test Speed: HIGH	Test System:EVERFINE GO-2000B_V1 SYSTEM V2.0.362
Temperature:25.3DEG	Humidity:56%
Operators:Myles	Test Distance:5.850m [K=1.0000]
Test Date:2018-11-05	Remarks:

LUMINOUS DISTRIBUTION INTENSITY DATA

Test:U:34.80V I:0.5000A P:17.40W PF:1.000 Freq:0Hz Lamp Flux:1938.5x1 lm		
NAME: TS150-18W-840	TYPE:Downlight	SERIAL No.:
SPEC.:4000K	DIM.: L168mm*W168mm*H80mm	
MFR.: NEKO LIGHTING AG		

Table--2

UNIT: cd

C( DEG) γ (DEG)	285	300	315	330	345														
0	1530	1530	1529	1529	1529														
5	1498	1505	1511	1521	1534														
10	1459	1469	1484	1505	1528														
15	1404	1419	1438	1467	1497														
20	1319	1336	1358	1390	1416														
25	1193	1205	1219	1248	1263														
30	1009	1018	1019	1041	1055														
35	786	790	780	795	794														
40	545	560	548	556	531														
45	255	341	371	330	236														
50	122	138	219	131	109														
55	36.7	59.5	68.1	52.4	24.7														
60	9.07	10.4	17.7	8.85	7.57														
65	2.04	3.05	3.11	2.79	2.00														
70	1.26	1.42	1.42	1.40	1.30														
75	0.74	0.84	0.86	0.85	0.83														
80	0.38	0.43	0.47	0.47	0.47														
85	0.15	0.15	0.19	0.20	0.23														
90	0.05	0.05	0.05	0.06	0.08														

C Range: 0 - 360DEG  
 C Interval: 15.0DEG  
 Test Speed: HIGH  
 Temperature:25.3DEG  
 Operators:Myles  
 Test Date:2018-11-05

γ Range: 0 - 90DEG  
 γ Interval: 1.0DEG  
 Test System:EVERFINE GO-2000B\_V1 SYSTEM V2.0.362  
 Humidity:56%  
 Test Distance:5.850m [K=1.0000]  
 Remarks: