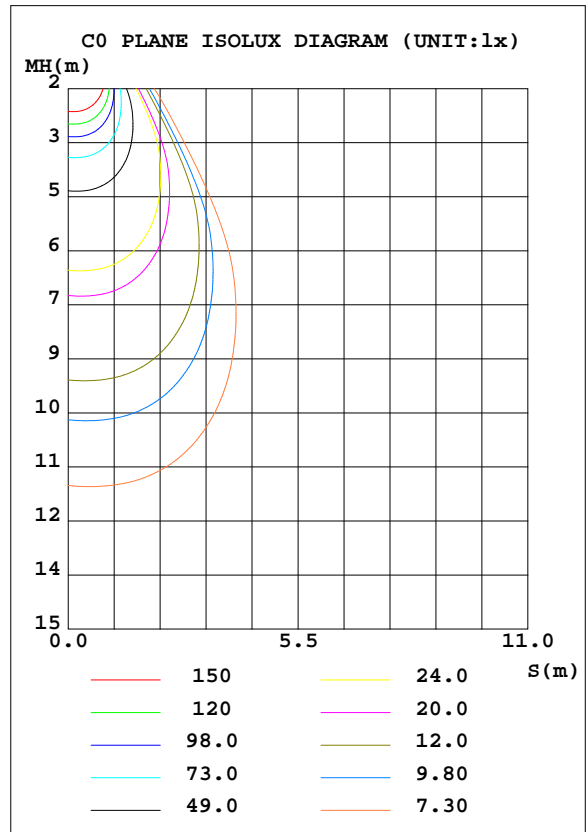
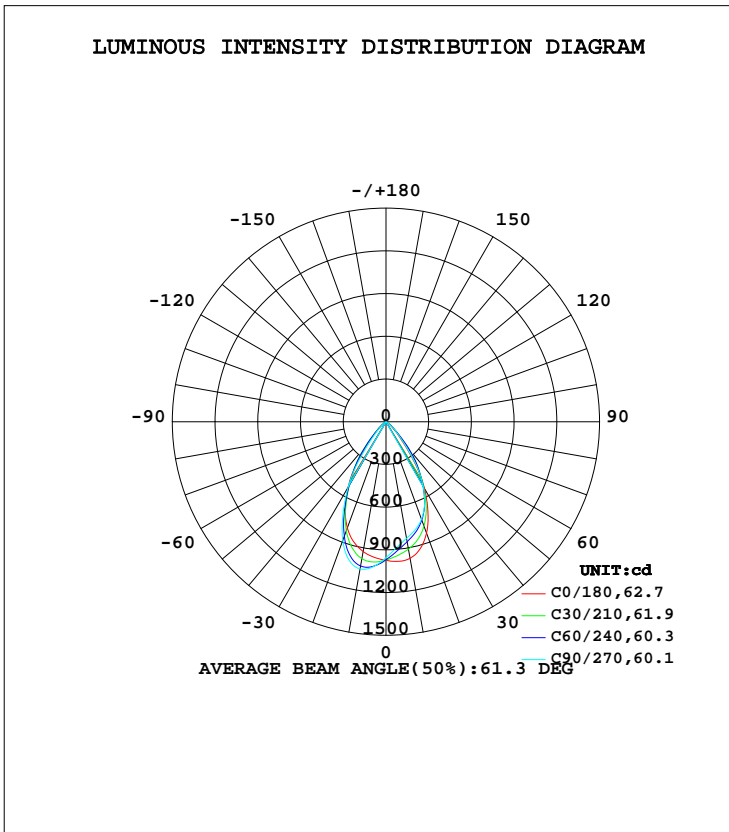


LUMINAIRE PHOTOMETRIC TEST REPORT

Test:U:37.30V I:0.3500A P:13.06W PF:1.000 Freq:0Hz Lamp Flux:987.667x1 lm		
NAME: TS100-13W-940	TYPE:Downlight	SERIAL No.:
SPEC.:4000K	DIM.: L110mm*W110mm*H80mm	
MFR.: NEKO LIGHTING AG		

DATA OF LAMP		PHOTOMETRIC DATA Eff: 75.65 lm/W			
MODEL	CITIZEN-4000K	I _{max} (cd)	1051	S/MH(C0/180)	0.94
NOMINAL POWER(W)	13	LOR(%)	100.0	S/MH(C90/270)	0.93
RATED VOLTAGE(V)	38	TOTAL FLUX(lm)	987.67	η UP, DN(C0-180)	0.0,49.7
NOMINAL FLUX(lm)	987.667	CIE CLASS	DIRECT	η UP, DN(C180-360)	0.0,50.3
LAMPS INSIDE	1	η up(%)	0.0	CIBSE SHR NOM	0.75
TEST VOLTAGE(V)	37.3	η down(%)	100.0	CIBSE SHR MAX	0.95



C Range: 0 - 360DEG
 C Interval: 15.0DEG
 Test Speed: HIGH
 Temperature:25.3DEG
 Operators:Myles
 Test Date:2018-11-03

γ Range: 0 - 90DEG
 γ Interval: 1.0DEG
 Test System:EVERFINE GO-2000B_V1 SYSTEM V2.0.362
 Humidity:56%
 Test Distance:5.850m [K=1.0000]
 Remarks:

ZONAL FLUX DIAGRAM

ZONAL FLUX DIAGRAM:

γ	C0	C45	C90	C135	C180	C225	C270	C315	γ	Φ zone	Φ total	%lum,lamp
10	973.6	880.1	832.1	871.6	925.7	1003	1049	1016	0- 10	91.15	91.15	9.23,9.23
20	832.7	755.7	729.2	762.4	794.3	829.6	888.1	849.8	10- 20	249.6	340.8	34.5,34.5
30	539.6	524.4	521.6	527.8	533.2	509.4	533.5	510.5	20- 30	307.2	647.9	65.6,65.6
40	179.9	283.9	197.8	280.5	188.4	255.5	160.0	249.8	30- 40	228.4	876.4	88.7,88.7
50	44.32	67.66	58.90	66.51	50.72	50.93	32.07	48.11	40- 50	90.34	966.7	97.9,97.9
60	3.555	6.249	4.196	5.657	3.485	3.889	3.022	4.258	50- 60	18.61	985.3	99.8,99.8
70	0.7837	1.011	0.6568	0.8018	0.7053	0.7658	0.5830	0.8797	60- 70	1.728	987.1	99.9,99.9
80	0.2584	0.2882	0.2015	0.2424	0.2074	0.2277	0.1418	0.2365	70- 80	0.4993	987.6	100,100
90	0.0547	0.0503	0.0568	0.0722	0.0568	0.0241	0.0262	0.0262	80- 90	0.1150	987.7	100,100
100									90-100			
110									100-110			
120									110-120			
130									120-130			
140									130-140			
150									140-150			
160									150-160			
170									160-170			
180									170-180			
DEG	LUMINOUS INTENSITY:cd									UNIT:lm		

Conical surface Flux(90deg): 935.12 lm

%lum = 94.7%

%lamp = 94.7%

Conical surface Flux(120deg): 985.32 lm

%lum = 99.8%

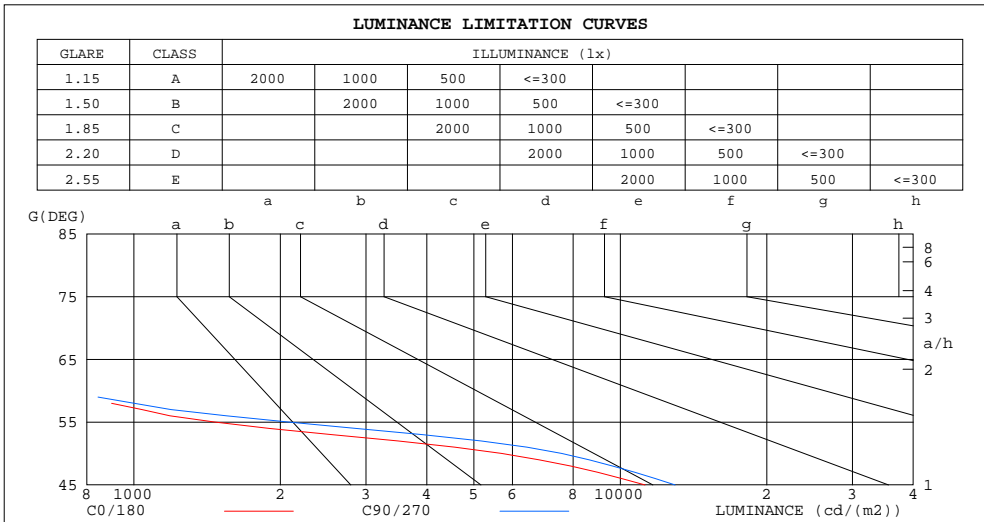
%lamp = 99.8%

C Range: 0 - 360DEG
C Interval: 15.0DEG
Test Speed: HIGH
Temperature:25.3DEG
Operators:Myles
Test Date:2018-11-03

γ Range: 0 - 90DEG
 γ Interval: 1.0DEG
Test System:EVERFINE GO-2000B_V1 SYSTEM V2.0.362
Humidity:56%
Test Distance:5.850m [K=1.0000]
Remarks:

LUMINANCE LIMITATION CURVES

Test:U:37.30V I:0.3500A P:13.06W PF:1.000 Freq:0Hz Lamp Flux:987.667x1 lm		
NAME: TS100-13W-940	TYPE:Downlight	SERIAL No.:
SPEC.:4000K	DIM.: L110mm*W110mm*H80mm	
MFR.: NEKO LIGHTING AG		



LUMINANCE cd/(m2)		
G(DEG)	C0/180	C90/270
85	127	79
80	123	96
75	145	120
70	189	159
65	264	225
60	588	693
55	1466	2080
50	5698	7573
45	11240	12962

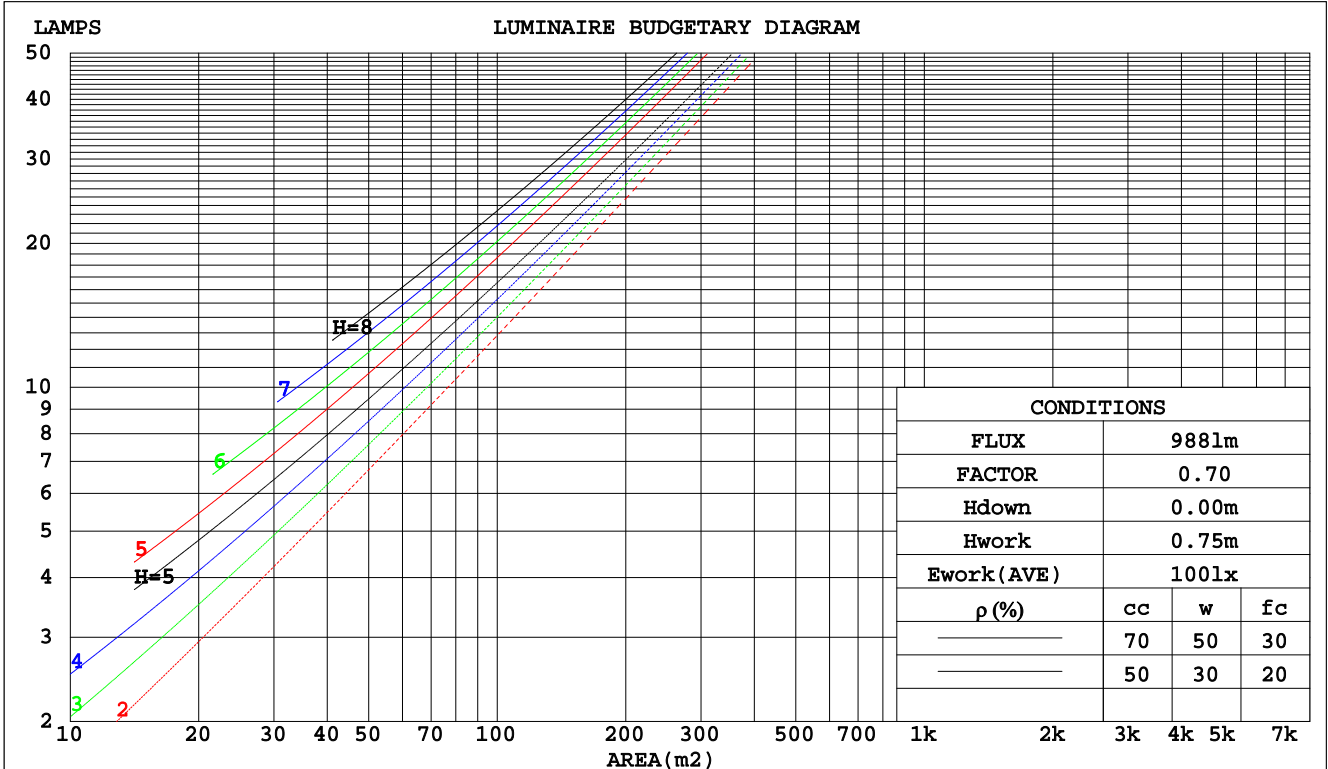
C Range: 0 - 360DEG
 C Interval: 15.0DEG
 Test Speed: HIGH
 Temperature:25.3DEG
 Operators:Myles
 Test Date:2018-11-03

γ Range: 0 - 90DEG
 γ Interval: 1.0DEG
 Test System:EVERFINE GO-2000B_V1 SYSTEM V2.0.362
 Humidity:56%
 Test Distance:5.850m [K=1.0000]
 Remarks:

CU AND LUMINAIRE BUDGETARY ESTIMATE DIAGRAM

Test:U:37.30V I:0.3500A P:13.06W PF:1.000 Freq:0Hz Lamp Flux:987.667x1 lm		
NAME: TS100-13W-940	TYPE:Downlight	SERIAL No.:
SPEC.:4000K	DIM.: L110mm*W110mm*H80mm	
MFR.: NEKO LIGHTING AG		

pcc	80%			70%			50%			30%			10%			0
	50%	30%	10%	50%	30%	10%	50%	30%	10%	50%	30%	10%	50%	30%	10%	0
pw																0
pfc																0
RCR	RCR:Room Cavity Ratio															
	Coefficients of Utilization(CU)															
0.0	1.19	1.19	1.19	1.16	1.16	1.16	1.11	1.11	1.11	1.06	1.06	1.06	1.02	1.02	1.02	.00
1.0	1.10	1.08	1.06	1.08	1.06	1.04	1.04	1.02	1.01	1.01	.99	.98	.97	.96	.95	.93
2.0	1.02	.98	.95	1.01	.97	.94	.97	.94	.92	.94	.92	.90	.92	.90	.88	.86
3.0	.95	.90	.86	.94	.89	.85	.91	.87	.84	.89	.85	.82	.86	.84	.81	.80
4.0	.88	.83	.78	.87	.82	.78	.85	.81	.77	.83	.79	.76	.81	.78	.75	.74
5.0	.82	.76	.72	.81	.76	.72	.80	.75	.71	.78	.74	.70	.76	.73	.70	.68
6.0	.77	.71	.66	.76	.70	.66	.75	.69	.66	.73	.69	.65	.72	.68	.65	.63
7.0	.72	.66	.61	.71	.65	.61	.70	.65	.61	.69	.64	.61	.68	.63	.60	.59
8.0	.68	.61	.57	.67	.61	.57	.66	.61	.57	.65	.60	.56	.64	.60	.56	.55
9.0	.64	.57	.53	.63	.57	.53	.62	.57	.53	.61	.56	.53	.60	.56	.53	.51
10.0	.60	.54	.50	.59	.54	.50	.59	.53	.50	.58	.53	.50	.57	.53	.49	.48



C Range: 0 - 360DEG
 C Interval: 15.0DEG
 Test Speed: HIGH
 Temperature: 25.3DEG
 Operators: Myles
 Test Date: 2018-11-03

γ Range: 0 - 90DEG
 γ Interval: 1.0DEG
 Test System: EVERFINE GO-2000B_V1 SYSTEM V2.0.362
 Humidity: 56%
 Test Distance: 5.850m [K=1.0000]
 Remarks:

WEC AND CCEC

Test:U:37.30V I:0.3500A P:13.06W PF:1.000 Freq:0Hz Lamp Flux:987.667x1 lm		
NAME: TS100-13W-940	TYPE:Downlight	SERIAL No.:
SPEC.:4000K	DIM.: L110mm*W110mm*H80mm	
MFR.: NEKO LIGHTING AG		

ρcc	80%			70%			50%			30%			10%			0
ρw	50%	30%	10%	50%	30%	10%	50%	30%	10%	50%	30%	10%	50%	30%	10%	0
ρfc	20%			20%			20%			20%			20%			0
RCR	RCR:Room Cavity Ratio						Wall Exitance Coefficients(WEC)									
0.0																
1.0	.183	.104	.033	.177	.101	.032	.164	.094	.030	.152	.088	.028	.142	.082	.026	
2.0	.177	.097	.030	.171	.094	.029	.161	.089	.028	.151	.085	.026	.142	.080	.025	
3.0	.169	.090	.027	.164	.088	.027	.155	.084	.026	.147	.080	.025	.139	.077	.024	
4.0	.162	.084	.025	.158	.082	.024	.150	.079	.024	.142	.076	.023	.135	.074	.022	
5.0	.154	.079	.023	.151	.077	.023	.144	.075	.022	.137	.073	.022	.131	.070	.021	
6.0	.148	.074	.021	.144	.073	.021	.138	.071	.021	.133	.069	.020	.127	.067	.020	
7.0	.141	.070	.020	.138	.069	.020	.133	.067	.019	.128	.065	.019	.123	.064	.019	
8.0	.135	.066	.019	.132	.065	.018	.128	.064	.018	.123	.062	.018	.119	.061	.018	
9.0	.129	.063	.017	.127	.062	.017	.123	.061	.017	.119	.059	.017	.115	.058	.017	
10.0	.124	.059	.017	.122	.059	.016	.118	.058	.016	.114	.057	.016	.111	.056	.016	

ρcc	80%			70%			50%			30%			10%			0
ρw	50%	30%	10%	50%	30%	10%	50%	30%	10%	50%	30%	10%	50%	30%	10%	0
ρfc	20%			20%			20%			20%			20%			0
RCR	RCR:Room Cavity Ratio						Ceiling Cavity Exitance Coefficients(CCEC)									
0.0	.190	.190	.190	.163	.163	.163	.111	.111	.111	.064	.064	.064	.020	.020	.020	
1.0	.172	.157	.144	.147	.135	.124	.100	.093	.086	.058	.054	.050	.019	.017	.016	
2.0	.157	.132	.112	.134	.114	.097	.092	.079	.067	.053	.046	.040	.017	.015	.013	
3.0	.145	.114	.089	.124	.098	.077	.085	.068	.054	.049	.040	.032	.016	.013	.010	
4.0	.135	.099	.071	.116	.086	.062	.080	.060	.044	.046	.035	.026	.015	.011	.008	
5.0	.127	.088	.058	.109	.076	.051	.075	.053	.036	.044	.031	.021	.014	.010	.007	
6.0	.120	.078	.049	.103	.068	.042	.071	.048	.030	.041	.028	.018	.013	.009	.006	
7.0	.114	.071	.041	.098	.062	.036	.068	.043	.025	.039	.025	.015	.013	.008	.005	
8.0	.108	.065	.035	.093	.056	.031	.064	.039	.022	.037	.023	.013	.012	.008	.004	
9.0	.103	.060	.030	.089	.052	.027	.062	.036	.019	.036	.022	.011	.012	.007	.004	
10.0	.099	.055	.027	.085	.048	.023	.059	.034	.017	.034	.020	.010	.011	.007	.003	

C Range: 0 - 360DEG
 C Interval: 15.0DEG
 Test Speed: HIGH
 Temperature:25.3DEG
 Operators:Myles
 Test Date:2018-11-03

γ Range: 0 - 90DEG
 γ Interval: 1.0DEG
 Test System:EVERFINE GO-2000B_V1 SYSTEM V2.0.362
 Humidity:56%
 Test Distance:5.850m [K=1.0000]
 Remarks:

UGR(Unified Glare Rating) Table

Test:U:37.30V I:0.3500A P:13.06W PF:1.000 Freq:0Hz Lamp Flux:987.667x1 lm		
NAME: TS100-13W-940	TYPE:Downlight	SERIAL No.:
SPEC.:4000K	DIM.: L110mm*W110mm*H80mm	
MFR.: NEKO LIGHTING AG		

ceiling/cavity	0.7	0.7	0.5	0.5	0.3	0.7	0.7	0.5	0.5	0.3
walls	0.5	0.3	0.5	0.3	0.3	0.5	0.3	0.5	0.3	0.3
working plane	0.2	0.2	0.2	0.2	0.2	0.2	0.2	0.2	0.2	0.2
Room dimensions	Viewed crosswise					Viewed endwise				
x = 2H y = 2H	17.7	18.7	17.9	18.8	19.0	17.9	18.9	18.1	19.0	19.2
3H	17.5	18.4	17.7	18.6	18.8	17.7	18.6	18.0	18.8	19.0
4H	17.4	18.3	17.7	18.5	18.7	17.6	18.5	17.9	18.7	18.9
6H	17.3	18.1	17.6	18.4	18.6	17.5	18.3	17.8	18.6	18.8
8H	17.3	18.0	17.6	18.3	18.6	17.5	18.2	17.8	18.5	18.8
12H	17.2	18.0	17.5	18.2	18.5	17.4	18.2	17.7	18.4	18.7
4H 2H	17.4	18.3	17.7	18.5	18.7	17.6	18.5	17.9	18.7	18.9
3H	17.2	18.0	17.6	18.2	18.5	17.4	18.2	17.8	18.5	18.7
4H	17.1	17.8	17.5	18.1	18.4	17.3	18.0	17.7	18.3	18.6
6H	17.0	17.6	17.4	18.0	18.3	17.3	17.8	17.6	18.2	18.5
8H	17.0	17.5	17.4	17.9	18.3	17.2	17.7	17.6	18.1	18.5
12H	17.0	17.4	17.4	17.8	18.2	17.2	17.7	17.6	18.0	18.4
8H 4H	17.0	17.5	17.4	17.9	18.3	17.2	17.7	17.6	18.1	18.5
6H	16.9	17.3	17.3	17.7	18.2	17.1	17.5	17.5	17.9	18.4
8H	16.8	17.2	17.3	17.7	18.1	17.1	17.4	17.5	17.9	18.3
12H	16.8	17.1	17.3	17.6	18.0	17.0	17.3	17.5	17.8	18.2
12H 4H	16.9	17.4	17.4	17.8	18.2	17.2	17.7	17.6	18.0	18.4
6H	16.8	17.2	17.3	17.7	18.1	17.1	17.4	17.5	17.9	18.3
8H	16.8	17.1	17.3	17.6	18.0	17.0	17.3	17.5	17.8	18.2
Variations with the observer position at spacings:										
S = 1.0H	+ 2.6 / -15.5					+ 2.6 / -15.4				
1.5H	+ 3.8 / - 7.8					+ 3.7 / - 7.2				
2.0H	+ 5.7 / -14.2					+ 5.6 / -15.7				

CIE Pub.117, 987.7 lm Total Lamp Luminous Flux Correct (8log(F/F0) = -0.0)

C Range: 0 - 360DEG
 C Interval: 15.0DEG
 Test Speed: HIGH
 Temperature:25.3DEG
 Operators:Myles
 Test Date:2018-11-03

γ Range: 0 - 90DEG
 γ Interval: 1.0DEG
 Test System:EVERFINE GO-2000B_V1 SYSTEM V2.0.362
 Humidity:56%
 Test Distance:5.850m [K=1.0000]
 Remarks:

UTILIZATION FACTORS TABLE

Test:U:37.30V I:0.3500A P:13.06W PF:1.000 Freq:0Hz Lamp Flux:987.667x1 lm		
NAME: TS100-13W-940	TYPE:Downlight	SERIAL No.:
SPEC.:4000K	DIM.: L110mm*W110mm*H80mm	
MFR.: NEKO LIGHTING AG		

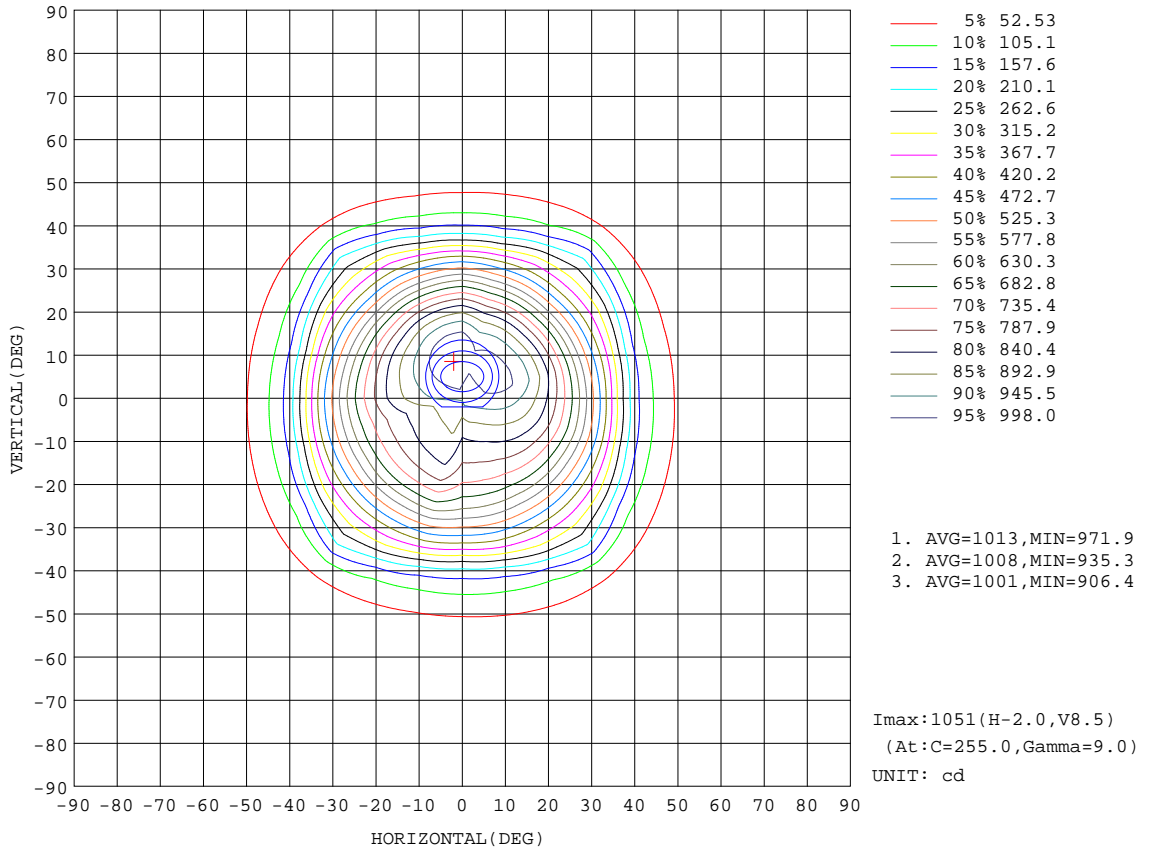
REFLECTANCE										
Ceiling	0.8	0.8	0.8	0.7	0.7	0.7	0.5	0.5	0.5	0
Walls	0.7	0.5	0.3	0.7	0.5	0.3	0.7	0.5	0.3	0
Working plane	0.2	0.2	0.2	0.2	0.2	0.2	0.2	0.2	0.2	0
ROOM INDEX	UTILIZATION FACTORS(PERCENT) $k(RI) \times RCR = 5$									
k = 0.60	84	77	73	84	77	73	83	77	73	69
0.80	92	86	82	92	86	82	90	85	81	78
1.00	98	92	88	97	91	87	95	91	87	83
1.25	102	96	93	101	96	92	99	95	92	87
1.50	105	100	96	104	99	96	101	98	95	90
2.00	108	104	100	107	103	99	104	101	98	93
2.50	110	106	103	108	104	102	105	102	100	94
3.00	111	108	105	110	106	104	106	104	102	95
4.00	113	110	108	111	109	107	108	106	104	97
5.00	115	112	110	112	110	109	108	107	106	98
ROOM INDEX	UF(total)									Direct
According to DIN EN 13032-2 2004			Suspended				SHRNOM = 1.25			

C Range: 0 - 360DEG
 C Interval: 15.0DEG
 Test Speed: HIGH
 Temperature:25.3DEG
 Operators:Myles
 Test Date:2018-11-03

γ Range: 0 - 90DEG
 γ Interval: 1.0DEG
 Test System:EVERFINE GO-2000B_V1 SYSTEM V2.0.362
 Humidity:56%
 Test Distance:5.850m [K=1.0000]
 Remarks:

ISOCANDELA DIAGRAM

Test:U:37.30V I:0.3500A P:13.06W PF:1.000 Freq:0Hz Lamp Flux:987.667x1 lm		
NAME: TS100-13W-940	TYPE:Downlight	SERIAL No.:
SPEC.:4000K	DIM.: L110mm*W110mm*H80mm	
MFR.: NEKO LIGHTING AG		

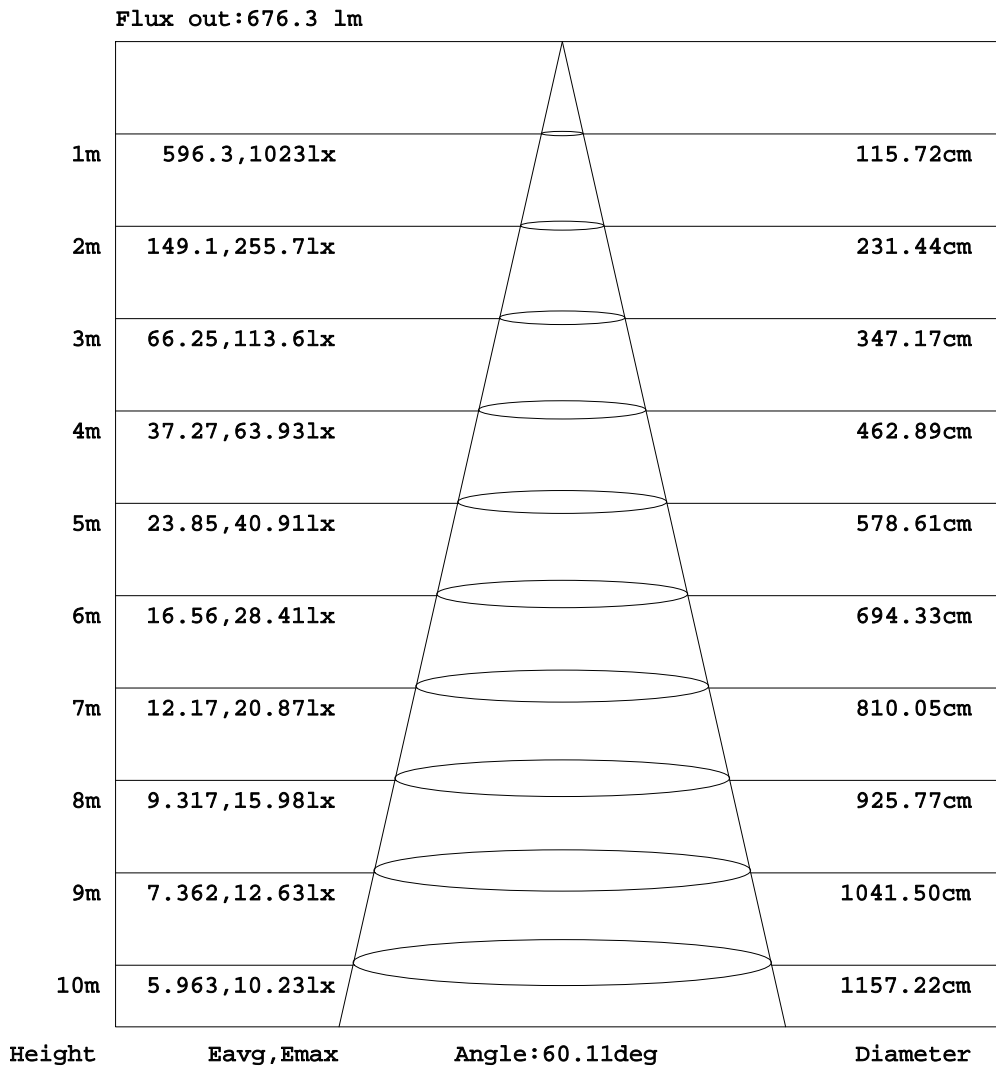


C Range: 0 - 360DEG
C Interval: 15.0DEG
Test Speed: HIGH
Temperature:25.3DEG
Operators:Myles
Test Date:2018-11-03

γ Range: 0 - 90DEG
γ Interval: 1.0DEG
Test System:EVERFINE GO-2000B_V1 SYSTEM V2.0.362
Humidity:56%
Test Distance:5.850m [K=1.0000]
Remarks:

AAI Figure

Test:U:37.30V I:0.3500A P:13.06W PF:1.000 Freq:0Hz Lamp Flux:987.667x1 lm		
NAME: TS100-13W-940	TYPE:Downlight	SERIAL No.:
SPEC.:4000K	DIM.: L110mm*W110mm*H80mm	
MFR.: NEKO LIGHTING AG		



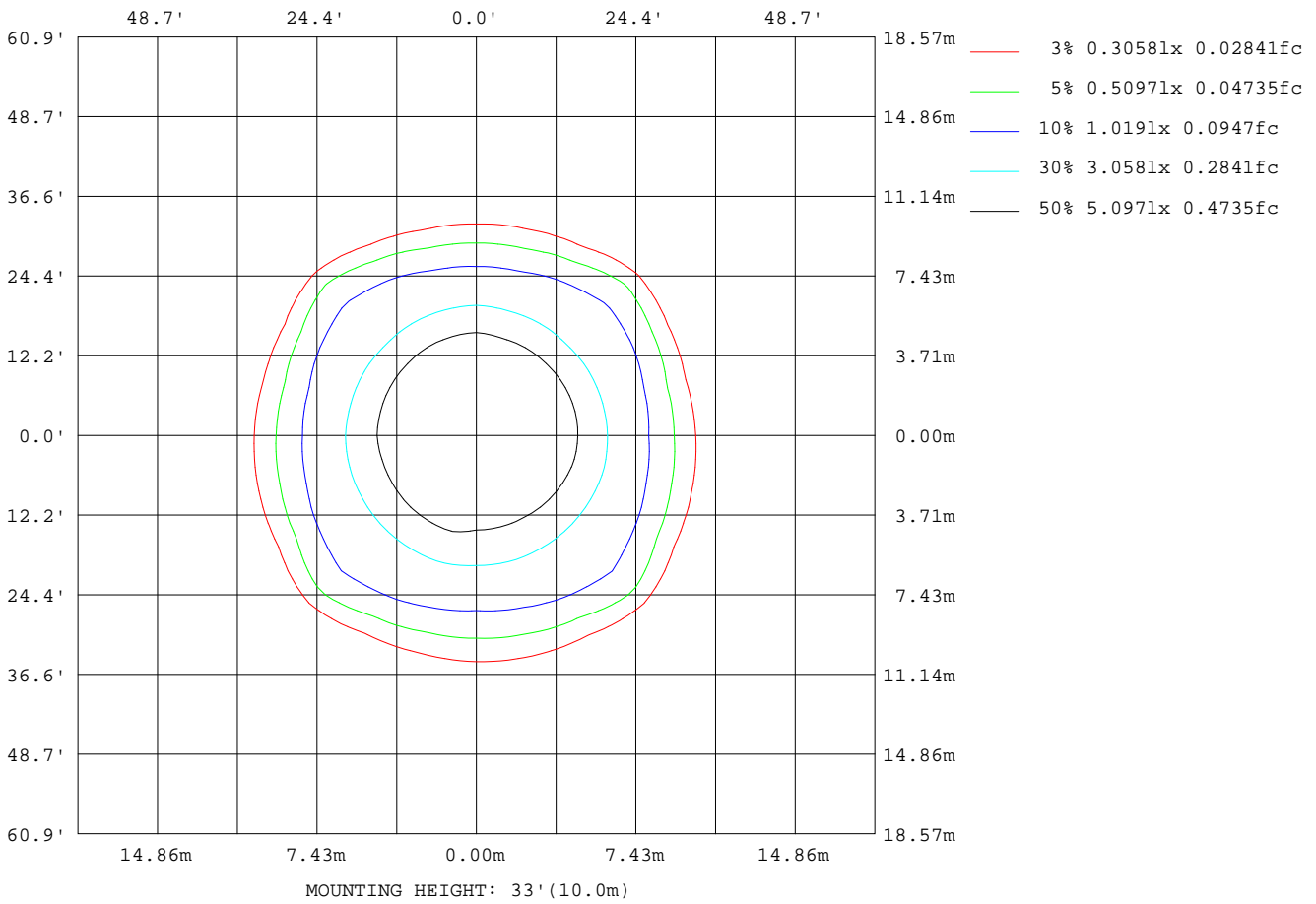
Note:The Curves indicate the illuminated area and the average illumination when the luminaire is at different distance.

C Range: 0 - 360DEG
C Interval: 15.0DEG
Test Speed: HIGH
Temperature:25.3DEG
Operators:Myles
Test Date:2018-11-03

γ Range: 0 - 90DEG
γ Interval: 1.0DEG
Test System:EVERFINE GO-2000B_V1 SYSTEM V2.0.362
Humidity:56%
Test Distance:5.850m [K=1.0000]
Remarks:

ISOLUX DIAGRAM

Test:U:37.30V I:0.3500A P:13.06W PF:1.000 Freq:0Hz Lamp Flux:987.667x1 lm		
NAME: TS100-13W-940	TYPE:Downlight	SERIAL No.:
SPEC.:4000K	DIM.: L110mm*W110mm*H80mm	
MFR.: NEKO LIGHTING AG		



C Range: 0 - 360DEG
 C Interval: 15.0DEG
 Test Speed: HIGH
 Temperature:25.3DEG
 Operators:Myles
 Test Date:2018-11-03

γ Range: 0 - 90DEG
 γ Interval: 1.0DEG
 Test System:EVERFINE GO-2000B_V1 SYSTEM V2.0.362
 Humidity:56%
 Test Distance:5.850m [K=1.0000]
 Remarks:

LED Avg.L Report

Test:U:37.30V I:0.3500A P:13.06W PF:1.000 Freq:0Hz Lamp Flux:987.667x1 lm		
NAME: TS100-13W-940	TYPE:Downlight	SERIAL No.:
SPEC.:4000K	DIM.: L110mm*W110mm*H80mm	
MFR.: NEKO LIGHTING AG		

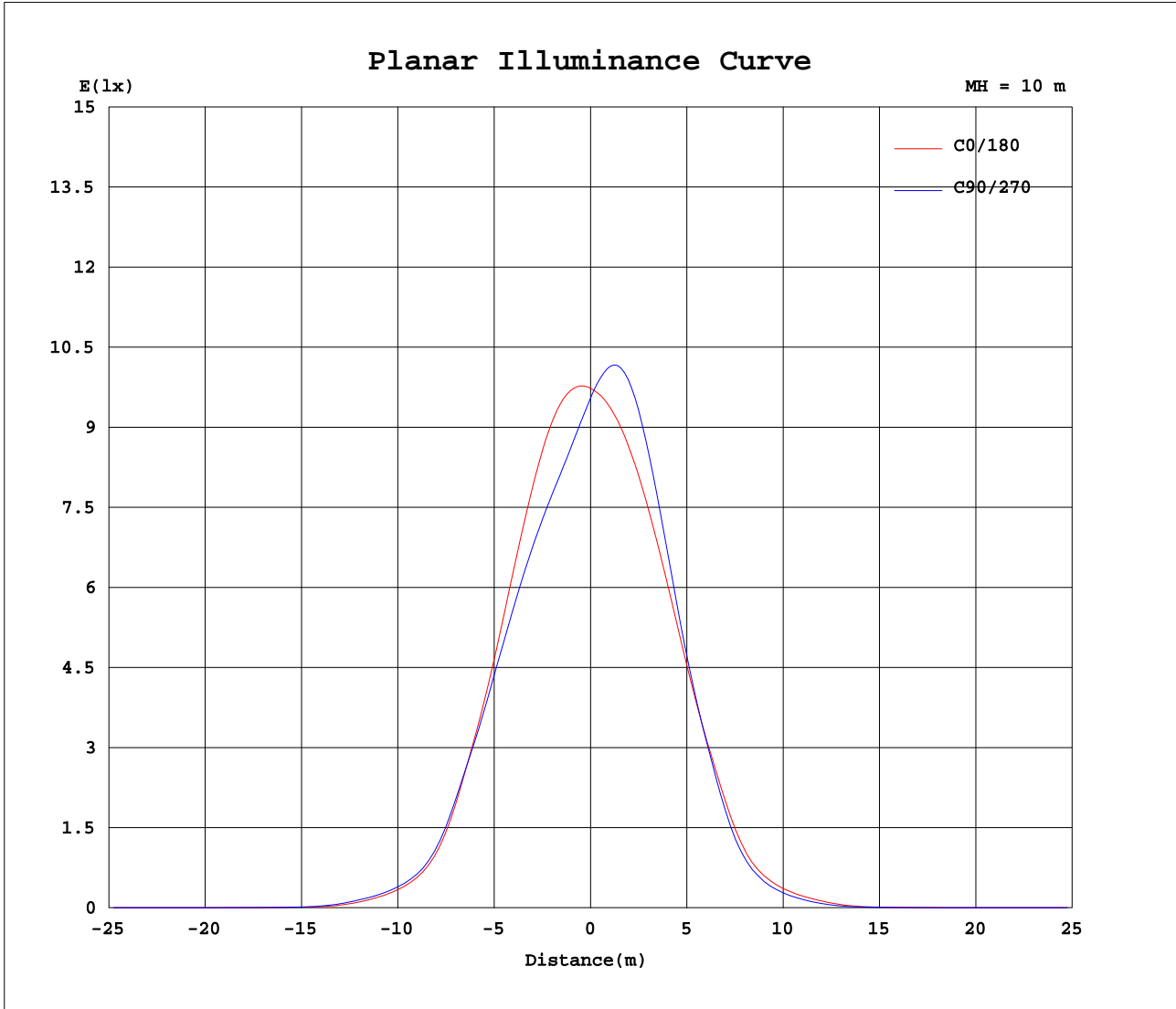
AvgL	cd/m2
L_0~180(65)av	253
L_0~180(75)av	135
L_0~180(85)av	109
L_90~270(65)av	214
L_90~270(75)av	110
L_90~270(85)av	57
L_45(65)av	320
L_45(75)av	159
L_45(85)av	86

Standard: GB/T 29293-2012

C Range: 0 - 360DEG
C Interval: 15.0DEG
Test Speed: HIGH
Temperature:25.3DEG
Operators:Myles
Test Date:2018-11-03

γ Range: 0 - 90DEG
γ Interval: 1.0DEG
Test System:EVERFINE GO-2000B_V1 SYSTEM V2.0.362
Humidity:56%
Test Distance:5.850m [K=1.0000]
Remarks:

Planar Illuminance Curve



C Range: 0 - 360DEG
 C Interval: 15.0DEG
 Test Speed: HIGH
 Temperature: 25.3DEG
 Operators: Myles
 Test Date: 2018-11-03

γ Range: 0 - 90DEG
 γ Interval: 1.0DEG
 Test System: EVERFINE GO-2000B_V1 SYSTEM V2.0.362
 Humidity: 56%
 Test Distance: 5.850m [K=1.0000]
 Remarks:

LUMINOUS DISTRIBUTION INTENSITY DATA

Test:U:37.30V I:0.3500A P:13.06W PF:1.000 Freq:0Hz Lamp Flux:987.667x1 lm		
NAME: TS100-13W-940	TYPE:Downlight	SERIAL No.:
SPEC.:4000K	DIM.: L110mm*W110mm*H80mm	
MFR.: NEKO LIGHTING AG		

Table--1

UNIT: cd

C(DEG)\ γ (DEG)	0	15	30	45	60	75	90	105	120	135	150	165	180	195	210	225	240	255	270
0	973	972	971	971	969	971	955	953	952	953	951	952	973	972	971	971	969	971	955
5	984	964	943	926	910	902	885	915	909	907	905	908	955	972	989	1005	1019	1031	1022
10	974	942	909	880	856	843	832	886	877	872	868	870	926	949	977	1003	1029	1049	1049
15	925	894	858	828	803	791	787	851	839	831	824	825	874	893	918	943	974	996	1005
20	833	811	780	756	736	729	729	783	770	762	757	760	794	802	815	830	857	874	888
25	698	691	669	654	642	641	642	677	665	660	655	661	678	671	673	676	693	703	717
30	540	543	530	524	520	523	522	540	531	528	524	528	533	520	516	509	520	523	533
35	353	376	391	395	392	386	368	389	394	394	388	377	363	361	373	368	370	341	331
40	180	200	245	284	256	213	198	211	251	280	244	202	188	188	223	256	216	168	160
45	96.2	104	118	173	125	114	111	109	119	171	118	108	102	97.3	103	139	97.3	81.4	79.3
50	44.3	51.6	59.0	67.7	64.4	62.6	58.9	57.1	60.0	66.5	60.6	56.4	50.7	49.2	52.2	50.9	45.1	35.4	32.1
55	10.2	13.2	23.3	30.0	27.7	19.5	14.4	16.3	24.5	29.6	25.1	14.3	11.2	11.8	20.0	19.9	15.4	8.67	8.15
60	3.56	4.68	5.13	6.25	4.85	4.77	4.20	4.29	4.31	5.66	4.70	4.02	3.48	3.63	4.08	3.89	3.69	2.99	3.02
65	1.35	1.48	1.82	1.93	1.66	1.39	1.15	1.09	1.29	1.59	1.56	1.30	1.23	1.20	1.39	1.39	1.18	1.04	1.04
70	0.78	0.89	1.01	1.01	0.97	0.80	0.66	0.64	0.76	0.80	0.85	0.78	0.71	0.73	0.78	0.77	0.72	0.63	0.58
75	0.46	0.53	0.61	0.58	0.55	0.44	0.37	0.37	0.44	0.47	0.51	0.46	0.39	0.42	0.45	0.45	0.41	0.37	0.31
80	0.26	0.29	0.33	0.29	0.27	0.21	0.20	0.18	0.23	0.24	0.29	0.26	0.21	0.23	0.23	0.23	0.18	0.17	0.14
85	0.13	0.13	0.15	0.10	0.10	0.07	0.08	0.07	0.09	0.10	0.13	0.13	0.10	0.11	0.07	0.09	0.05	0.06	0.04
90	0.05	0.05	0.05	0.05	0.05	0.06	0.06	0.07	0.07	0.07	0.05	0.05	0.06	0.02	0.02	0.02	0.02	0.03	0.03

C Range: 0 - 360DEG
 C Interval: 15.0DEG
 Test Speed: HIGH
 Temperature: 25.3DEG
 Operators: Myles
 Test Date: 2018-11-03

γ Range: 0 - 90DEG
 γ Interval: 1.0DEG
 Test System: EVERFINE GO-2000B_V1 SYSTEM V2.0.362
 Humidity: 56%
 Test Distance: 5.850m [K=1.0000]
 Remarks:

LUMINOUS DISTRIBUTION INTENSITY DATA

Test:U:37.30V I:0.3500A P:13.06W PF:1.000 Freq:0Hz Lamp Flux:987.667x1 lm		
NAME: TS100-13W-940	TYPE:Downlight	SERIAL No.:
SPEC.:4000K	DIM.: L110mm*W110mm*H80mm	
MFR.: NEKO LIGHTING AG		

Table--2

UNIT: cd

C(DEC) γ (DEC)	285	300	315	330	345														
0	953	952	953	951	952														
5	992	998	1001	999	996														
10	1004	1013	1016	1015	1009														
15	958	966	966	968	964														
20	849	853	850	856	858														
25	688	690	685	695	701														
30	515	516	510	521	530														
35	333	362	363	370	362														
40	164	203	250	227	185														
45	82.1	91.2	133	102	90.5														
50	37.3	45.0	48.1	48.4	43.6														
55	9.32	15.8	19.1	18.6	11.7														
60	3.25	4.13	4.26	4.52	4.28														
65	1.22	1.43	1.62	1.67	1.43														
70	0.72	0.85	0.88	0.89	0.85														
75	0.39	0.46	0.50	0.50	0.49														
80	0.18	0.20	0.24	0.24	0.26														
85	0.05	0.04	0.08	0.07	0.11														
90	0.03	0.02	0.03	0.02	0.03														

C Range: 0 - 360DEG
 C Interval: 15.0DEG
 Test Speed: HIGH
 Temperature:25.3DEG
 Operators:Myles
 Test Date:2018-11-03

γ Range: 0 - 90DEG
 γ Interval: 1.0DEG
 Test System:EVERFINE GO-2000B_V1 SYSTEM V2.0.362
 Humidity:56%
 Test Distance:5.850m [K=1.0000]
 Remarks: