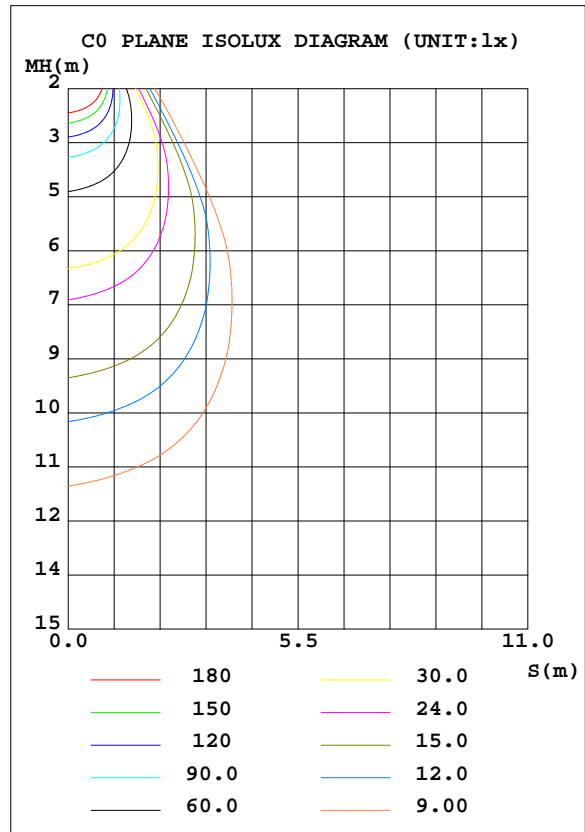
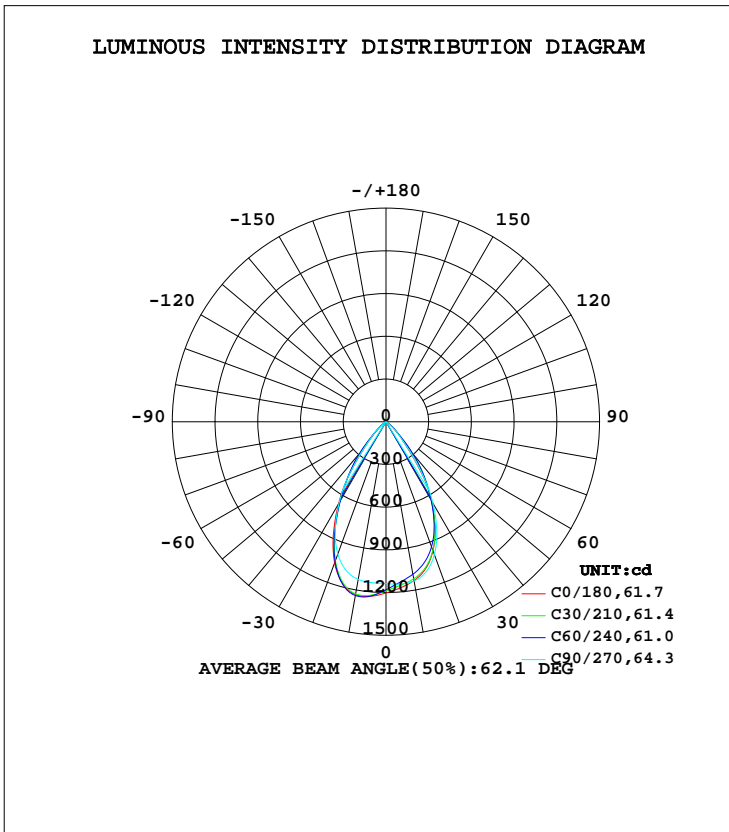


LUMINAIRE PHOTOMETRIC TEST REPORT

Test:U:37.20V I:0.3500A P:13.02W PF:1.000 Freq:0Hz Lamp Flux:1211.18x1 lm		
NAME: TS100-13W-840	TYPE:Downlight	SERIAL No.:
SPEC.:4000K	DIM.: L110mm*W110mm*H80mm	
MFR.: NEKO LIGHTING AG		

DATA OF LAMP		PHOTOMETRIC DATA Eff: 93.02 lm/W			
MODEL	CITIZEN-4000K	I _{max} (cd)	1244	S/MH(C0/180)	0.94
NOMINAL POWER(W)	13	LOR(%)	100.0	S/MH(C90/270)	0.95
RATED VOLTAGE(V)	38	TOTAL FLUX(lm)	1211.2	η UP, DN(C0-180)	0.0,49.9
NOMINAL FLUX(lm)	1211.18	CIE CLASS	DIRECT	η UP, DN(C180-360)	0.0,50.1
LAMPS INSIDE	1	η up(%)	0.0	CIBSE SHR NOM	1.00
TEST VOLTAGE(V)	37.2	η down(%)	100.0	CIBSE SHR MAX	1.00



C Range: 0 - 360DEG
 C Interval: 15.0DEG
 Test Speed: HIGH
 Temperature:25.3DEG
 Operators:Myles
 Test Date:2018-11-05

γ Range: 0 - 90DEG
 γ Interval: 1.0DEG
 Test System:EVERFINE GO-2000B_V1 SYSTEM V2.0.362
 Humidity:56%
 Test Distance:5.850m [K=1.0000]
 Remarks:

ZONAL FLUX DIAGRAM

ZONAL FLUX DIAGRAM:

γ	C0	C45	C90	C135	C180	C225	C270	C315	γ	Φ zone	Φ total	%lum, lamp
10	1134	1105	1136	1122	1233	1233	1125	1098	0- 10	110.2	110.2	9.1,9.1
20	965.6	949.9	994.6	983.8	1055	1035	989.3	950.0	10- 20	305.1	415.3	34.3,34.3
30	636.4	637.9	658.5	652.4	669.4	633.9	659.0	619.2	20- 30	377.4	792.8	65.5,65.5
40	219.7	334.0	226.1	338.9	224.1	314.1	231.0	320.4	30- 40	281.0	1074	88.7,88.7
50	57.73	77.60	57.39	77.61	53.43	67.26	60.40	70.23	40- 50	111.5	1185	97.9,97.9
60	4.246	7.006	4.320	6.689	4.668	5.654	4.127	5.644	50- 60	22.95	1208	99.8,99.8
70	0.8800	1.186	0.8672	1.256	0.8867	0.9607	0.7227	0.9519	60- 70	2.159	1210	99.9,99.9
80	0.3021	0.3122	0.2365	0.3603	0.2926	0.2846	0.1659	0.2628	70- 80	0.6161	1211	100,100
90	0.0743	0.0590	0.0634	0.0590	0.0394	0.0328	0.0328	0.0328	80- 90	0.1404	1211	100,100
100									90-100			
110									100-110			
120									110-120			
130									120-130			
140									130-140			
150									140-150			
160									150-160			
170									160-170			
180									170-180			
DEG	LUMINOUS INTENSITY:cd									UNIT:lm		

Conical surface Flux(90deg): 1146.3 lm

%lum = 94.6%
%lamp = 94.6%

Conical surface Flux(120deg): 1208.3 lm

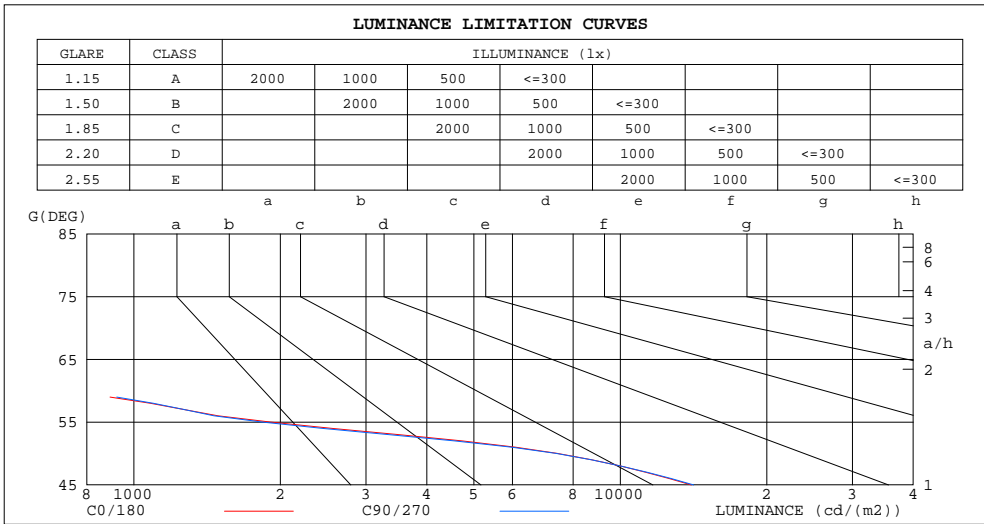
%lum = 99.8%
%lamp = 99.8%

C Range: 0 - 360DEG
C Interval: 15.0DEG
Test Speed: HIGH
Temperature:25.3DEG
Operators:Myles
Test Date:2018-11-05

γ Range: 0 - 90DEG
γ Interval: 1.0DEG
Test System:EVERFINE GO-2000B_V1 SYSTEM V2.0.362
Humidity:56%
Test Distance:5.850m [K=1.0000]
Remarks:

LUMINANCE LIMITATION CURVES

Test:U:37.20V I:0.3500A P:13.02W PF:1.000 Freq:0Hz Lamp Flux:1211.18x1 lm		
NAME: TS100-13W-840	TYPE:Downlight	SERIAL No.:
SPEC.:4000K	DIM.: L110mm*W110mm*H80mm	
MFR.: NEKO LIGHTING AG		



LUMINANCE cd/(m2)		
G(DEG)	C0/180	C90/270
85	154	98
80	144	113
75	167	146
70	213	210
65	292	313
60	702	714
55	1907	1834
50	7423	7379
45	14005	14151

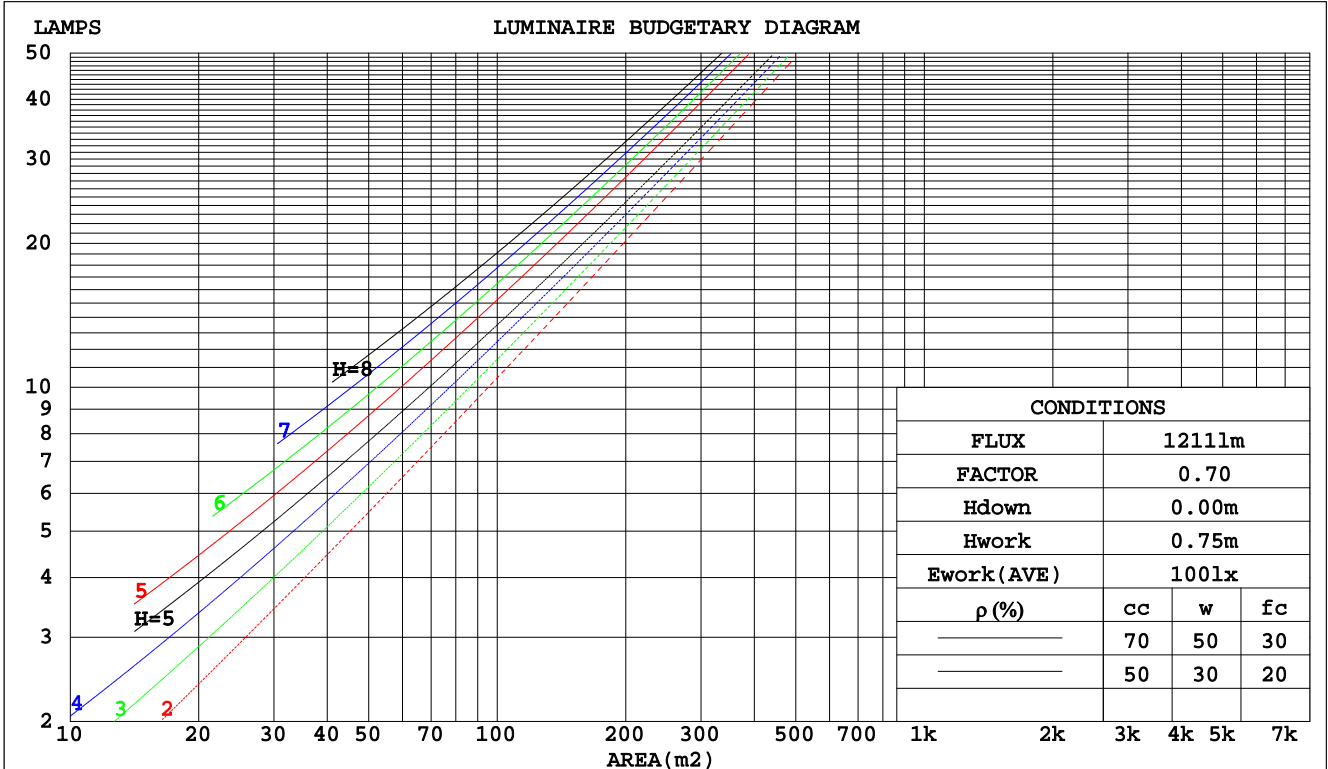
C Range: 0 - 360DEG
 C Interval: 15.0DEG
 Test Speed: HIGH
 Temperature:25.3DEG
 Operators:Myles
 Test Date:2018-11-05

γ Range: 0 - 90DEG
 γ Interval: 1.0DEG
 Test System:EVERFINE GO-2000B_V1 SYSTEM V2.0.362
 Humidity:56%
 Test Distance:5.850m [K=1.0000]
 Remarks:

CU AND LUMINAIRE BUDGETARY ESTIMATE DIAGRAM

Test:U:37.20V I:0.3500A P:13.02W PF:1.000 Freq:0Hz Lamp Flux:1211.18x1 lm		
NAME: TS100-13W-840	TYPE:Downlight	SERIAL No.:
SPEC.:4000K	DIM.: L110mm*W110mm*H80mm	
MFR.: NEKO LIGHTING AG		

pcc	80%			70%			50%			30%			10%			0
	50%	30%	10%	50%	30%	10%	50%	30%	10%	50%	30%	10%	50%	30%	10%	0
pw																0
pfc	20%			20%			20%			20%			20%			0
RCR	RCR:Room Cavity Ratio															
	Coefficients of Utilization(CU)															
0.0	1.19	1.19	1.19	1.16	1.16	1.16	1.11	1.11	1.11	1.06	1.06	1.06	1.02	1.02	1.02	1.00
1.0	1.10	1.08	1.06	1.08	1.06	1.04	1.04	1.02	1.01	1.01	.99	.98	.97	.96	.95	.93
2.0	1.02	.98	.95	1.01	.97	.94	.97	.94	.92	.94	.92	.90	.92	.90	.88	.86
3.0	.95	.90	.86	.94	.89	.85	.91	.87	.84	.89	.85	.82	.86	.83	.81	.79
4.0	.88	.83	.78	.87	.82	.78	.85	.80	.77	.83	.79	.76	.81	.78	.75	.73
5.0	.82	.76	.72	.81	.76	.71	.80	.75	.71	.78	.74	.70	.76	.73	.70	.68
6.0	.77	.71	.66	.76	.70	.66	.75	.69	.66	.73	.69	.65	.72	.68	.65	.63
7.0	.72	.66	.61	.71	.65	.61	.70	.65	.61	.69	.64	.60	.68	.63	.60	.59
8.0	.68	.61	.57	.67	.61	.57	.66	.60	.57	.65	.60	.56	.64	.59	.56	.55
9.0	.63	.57	.53	.63	.57	.53	.62	.57	.53	.61	.56	.53	.60	.56	.53	.51
10.0	.60	.54	.50	.59	.54	.50	.59	.53	.50	.58	.53	.49	.57	.52	.49	.48



C Range: 0 - 360DEG
 C Interval: 15.0DEG
 Test Speed: HIGH
 Temperature: 25.3DEG
 Operators: Myles
 Test Date: 2018-11-05

γ Range: 0 - 90DEG
 γ Interval: 1.0DEG
 Test System: EVERFINE GO-2000B_V1 SYSTEM V2.0.362
 Humidity: 56%
 Test Distance: 5.850m [K=1.0000]
 Remarks:

WEC AND CCEC

Test:U:37.20V I:0.3500A P:13.02W PF:1.000 Freq:0Hz Lamp Flux:1211.18x1 lm		
NAME: TS100-13W-840	TYPE:Downlight	SERIAL No.:
SPEC.:4000K	DIM.: L110mm*W110mm*H80mm	
MFR.: NEKO LIGHTING AG		

ρcc	80%			70%			50%			30%			10%			0
ρw	50%	30%	10%	50%	30%	10%	50%	30%	10%	50%	30%	10%	50%	30%	10%	0
ρfc	20%			20%			20%			20%			20%			0
RCR	RCR:Room Cavity Ratio						Wall Exitance Coefficients(WEC)									
0.0																
1.0	.184	.104	.033	.177	.101	.032	.164	.094	.030	.153	.088	.028	.142	.082	.027	
2.0	.177	.097	.030	.171	.094	.029	.161	.089	.028	.151	.085	.027	.142	.080	.025	
3.0	.170	.090	.027	.165	.088	.027	.156	.084	.026	.147	.081	.025	.139	.077	.024	
4.0	.162	.084	.025	.158	.083	.024	.150	.079	.024	.143	.077	.023	.136	.074	.022	
5.0	.155	.079	.023	.151	.078	.023	.144	.075	.022	.138	.073	.022	.132	.070	.021	
6.0	.148	.074	.021	.145	.073	.021	.138	.071	.021	.133	.069	.020	.127	.067	.020	
7.0	.141	.070	.020	.138	.069	.020	.133	.067	.019	.128	.066	.019	.123	.064	.019	
8.0	.135	.066	.019	.133	.065	.018	.128	.064	.018	.123	.062	.018	.119	.061	.018	
9.0	.130	.063	.017	.127	.062	.017	.123	.061	.017	.119	.060	.017	.115	.058	.017	
10.0	.124	.060	.017	.122	.059	.016	.118	.058	.016	.114	.057	.016	.111	.056	.016	

ρcc	80%			70%			50%			30%			10%			0
ρw	50%	30%	10%	50%	30%	10%	50%	30%	10%	50%	30%	10%	50%	30%	10%	0
ρfc	20%			20%			20%			20%			20%			0
RCR	RCR:Room Cavity Ratio						Ceiling Cavity Exitance Coefficients(CCEC)									
0.0	.190	.190	.190	.163	.163	.163	.111	.111	.111	.064	.064	.064	.020	.020	.020	
1.0	.172	.157	.144	.147	.135	.124	.100	.093	.086	.058	.054	.050	.019	.017	.016	
2.0	.157	.132	.112	.134	.114	.097	.092	.079	.067	.053	.046	.040	.017	.015	.013	
3.0	.145	.114	.088	.124	.098	.077	.085	.068	.054	.049	.040	.032	.016	.013	.010	
4.0	.135	.099	.071	.116	.086	.062	.080	.060	.044	.046	.035	.026	.015	.011	.008	
5.0	.127	.088	.058	.109	.076	.051	.075	.053	.036	.044	.031	.021	.014	.010	.007	
6.0	.120	.078	.049	.103	.068	.042	.071	.048	.030	.041	.028	.018	.013	.009	.006	
7.0	.114	.071	.041	.098	.062	.036	.068	.043	.025	.039	.025	.015	.013	.008	.005	
8.0	.108	.065	.035	.093	.056	.031	.064	.040	.022	.037	.023	.013	.012	.008	.004	
9.0	.103	.060	.030	.089	.052	.027	.062	.036	.019	.036	.022	.011	.012	.007	.004	
10.0	.099	.055	.027	.085	.048	.023	.059	.034	.017	.034	.020	.010	.011	.007	.003	

C Range: 0 - 360DEG
 C Interval: 15.0DEG
 Test Speed: HIGH
 Temperature:25.3DEG
 Operators:Myles
 Test Date:2018-11-05

γ Range: 0 - 90DEG
 γ Interval: 1.0DEG
 Test System:EVERFINE GO-2000B_V1 SYSTEM V2.0.362
 Humidity:56%
 Test Distance:5.850m [K=1.0000]
 Remarks:

UGR(Unified Glare Rating) Table

Test:U:37.20V I:0.3500A P:13.02W PF:1.000 Freq:0Hz Lamp Flux:1211.18x1 lm		
NAME: TS100-13W-840	TYPE:Downlight	SERIAL No.:
SPEC.:4000K	DIM.: L110mm*W110mm*H80mm	
MFR.: NEKO LIGHTING AG		

ceiling/cavity	0.7	0.7	0.5	0.5	0.3	0.7	0.7	0.5	0.5	0.3
walls	0.5	0.3	0.5	0.3	0.3	0.5	0.3	0.5	0.3	0.3
working plane	0.2	0.2	0.2	0.2	0.2	0.2	0.2	0.2	0.2	0.2
Room dimensions	Viewed crosswise					Viewed endwise				
x = 2H y = 2H	17.4	18.4	17.7	18.6	18.8	17.6	18.6	17.8	18.7	18.9
3H	17.3	18.2	17.5	18.4	18.6	17.4	18.3	17.7	18.5	18.7
4H	17.2	18.0	17.5	18.3	18.5	17.3	18.2	17.6	18.4	18.6
6H	17.1	17.9	17.4	18.1	18.4	17.2	18.0	17.5	18.3	18.5
8H	17.0	17.8	17.4	18.1	18.3	17.2	17.9	17.5	18.2	18.5
12H	17.0	17.7	17.3	18.0	18.3	17.1	17.9	17.4	18.1	18.4
4H 2H	17.2	18.1	17.5	18.3	18.5	17.3	18.2	17.6	18.4	18.6
3H	17.0	17.8	17.3	18.0	18.3	17.1	17.9	17.5	18.2	18.4
4H	16.9	17.6	17.3	17.9	18.2	17.0	17.7	17.4	18.0	18.3
6H	16.8	17.4	17.2	17.8	18.1	16.9	17.5	17.3	17.9	18.2
8H	16.8	17.3	17.2	17.7	18.0	16.9	17.4	17.3	17.8	18.2
12H	16.7	17.2	17.1	17.6	18.0	16.9	17.3	17.3	17.7	18.1
8H 4H	16.8	17.3	17.2	17.7	18.0	16.9	17.4	17.3	17.8	18.2
6H	16.7	17.1	17.1	17.5	17.9	16.8	17.2	17.2	17.6	18.1
8H	16.6	17.0	17.1	17.4	17.9	16.7	17.1	17.2	17.6	18.0
12H	16.6	16.9	17.0	17.4	17.8	16.7	17.0	17.2	17.5	17.9
12H 4H	16.7	17.2	17.1	17.6	18.0	16.9	17.3	17.3	17.7	18.1
6H	16.6	17.0	17.1	17.4	17.9	16.7	17.1	17.2	17.6	18.0
8H	16.6	16.9	17.0	17.4	17.8	16.7	17.0	17.2	17.5	17.9
Variations with the observer position at spacings:										
S = 1.0H	+ 2.6 / -15.4					+ 2.6 / -15.9				
1.5H	+ 3.8 / - 8.1					+ 3.8 / - 7.8				
2.0H	+ 5.7 / -14.5					+ 5.9 / -15.3				

CIE Pub.117, 1211 lm Total Lamp Luminous Flux Correct (8log(F/F0) = 0.7)

C Range: 0 - 360DEG
 C Interval: 15.0DEG
 Test Speed: HIGH
 Temperature:25.3DEG
 Operators:Myles
 Test Date:2018-11-05

γ Range: 0 - 90DEG
 γ Interval: 1.0DEG
 Test System:EVERFINE GO-2000B_V1 SYSTEM V2.0.362
 Humidity:56%
 Test Distance:5.850m [K=1.0000]
 Remarks:

UTILIZATION FACTORS TABLE

Test:U:37.20V I:0.3500A P:13.02W PF:1.000 Freq:0Hz Lamp Flux:1211.18x1 lm		
NAME: TS100-13W-840	TYPE:Downlight	SERIAL No.:
SPEC.:4000K	DIM.: L110mm*W110mm*H80mm	
MFR.: NEKO LIGHTING AG		

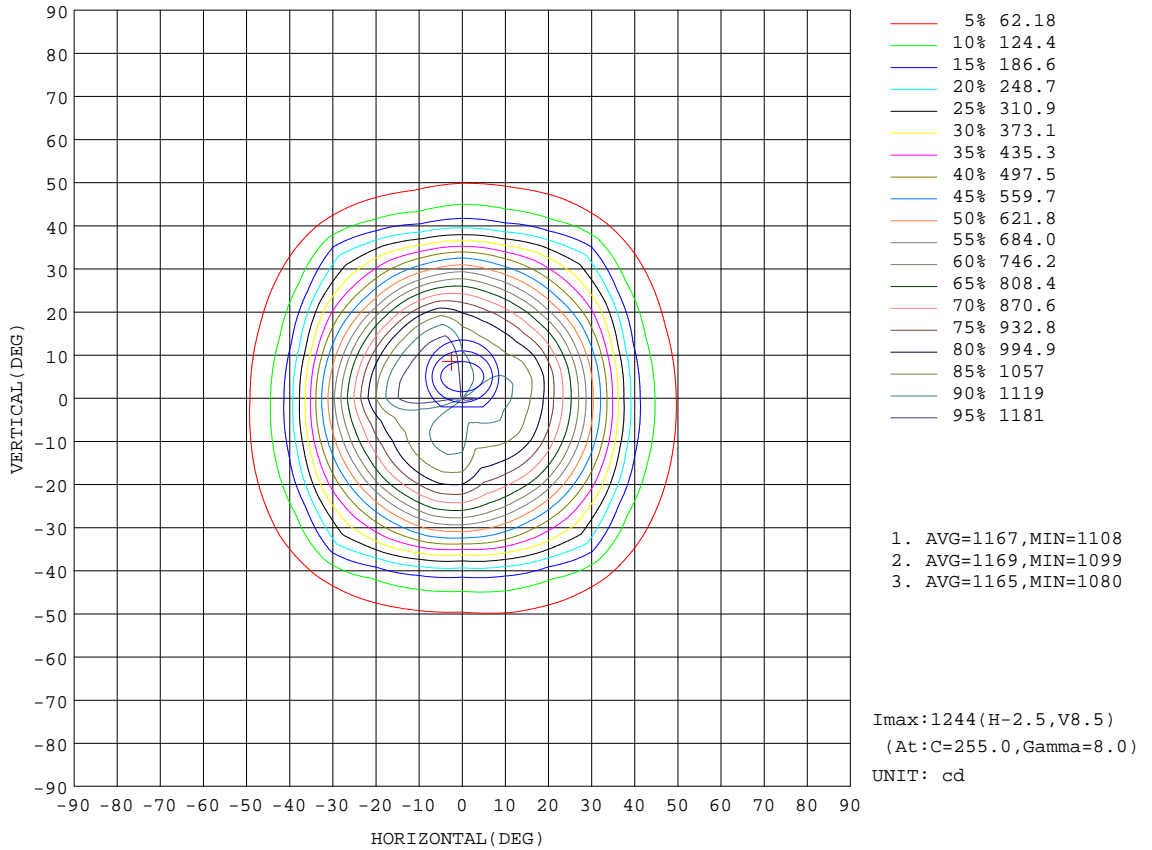
REFLECTANCE										
Ceiling	0.8	0.8	0.8	0.7	0.7	0.7	0.5	0.5	0.5	0
Walls	0.7	0.5	0.3	0.7	0.5	0.3	0.7	0.5	0.3	0
Working plane	0.2	0.2	0.2	0.2	0.2	0.2	0.2	0.2	0.2	0
ROOM INDEX	UTILIZATION FACTORS(PERCENT) $k(RI) \times RCR = 5$									
k = 0.60	84	77	73	84	77	73	83	77	73	69
0.80	92	86	82	92	86	82	90	85	81	77
1.00	98	92	88	97	91	87	95	91	87	83
1.25	102	96	93	101	96	92	99	95	92	87
1.50	105	100	96	104	99	96	101	98	95	90
2.00	108	104	100	106	103	99	104	101	98	93
2.50	110	106	103	108	104	102	105	102	100	94
3.00	111	108	105	110	106	104	106	104	102	95
4.00	113	110	108	111	109	107	108	106	104	97
5.00	115	112	110	112	110	109	108	107	106	98
ROOM INDEX	UF(total)									Direct
According to DIN EN 13032-2 2004			Suspended				SHRNOM = 1.25			

C Range: 0 - 360DEG
 C Interval: 15.0DEG
 Test Speed: HIGH
 Temperature:25.3DEG
 Operators:Myles
 Test Date:2018-11-05

γ Range: 0 - 90DEG
 γ Interval: 1.0DEG
 Test System:EVERFINE GO-2000B_V1 SYSTEM V2.0.362
 Humidity:56%
 Test Distance:5.850m [K=1.0000]
 Remarks:

ISOCANDELA DIAGRAM

Test:U:37.20V I:0.3500A P:13.02W PF:1.000 Freq:0Hz Lamp Flux:1211.18x1 lm		
NAME: TS100-13W-840	TYPE:Downlight	SERIAL No.:
SPEC.:4000K	DIM.: L110mm*W110mm*H80mm	
MFR.: NEKO LIGHTING AG		



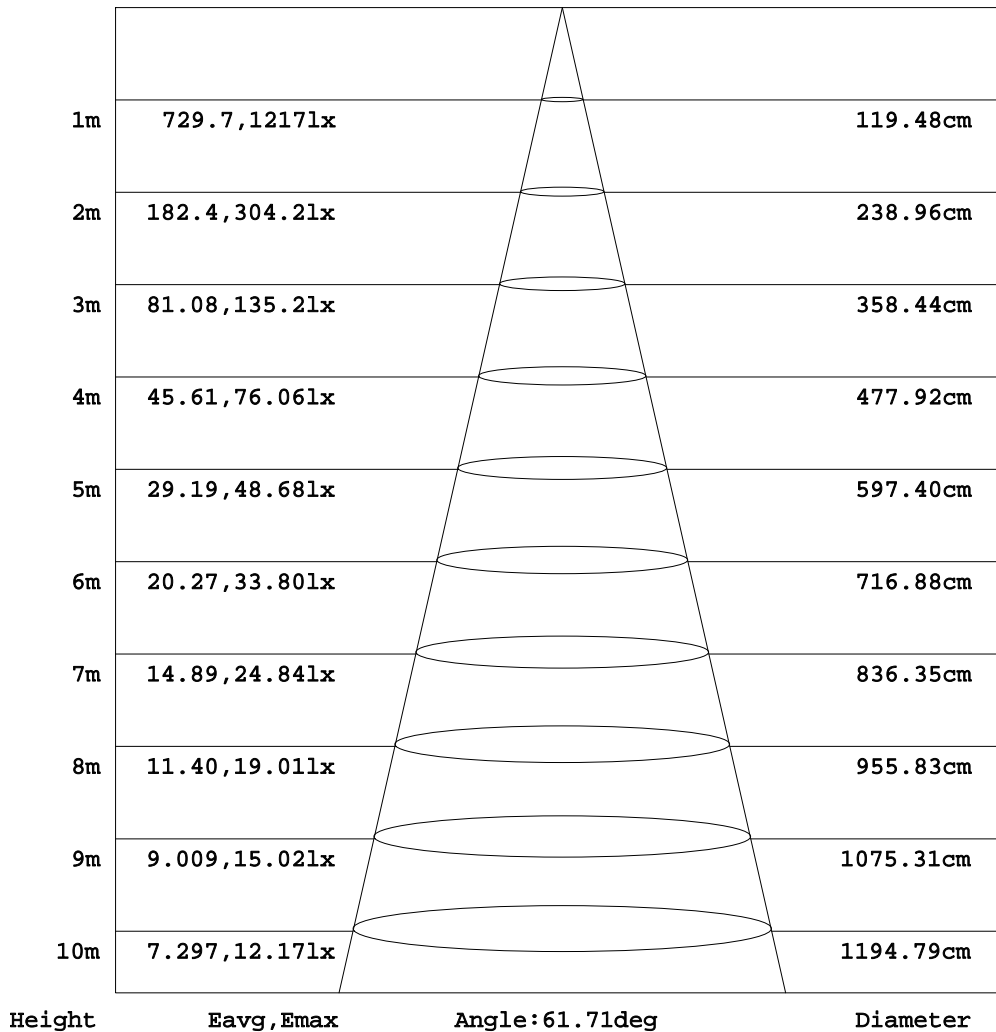
C Range: 0 - 360DEG
C Interval: 15.0DEG
Test Speed: HIGH
Temperature:25.3DEG
Operators:Myles
Test Date:2018-11-05

γ Range: 0 - 90DEG
γ Interval: 1.0DEG
Test System:EVERFINE GO-2000B_V1 SYSTEM V2.0.362
Humidity:56%
Test Distance:5.850m [K=1.0000]
Remarks:

AAI Figure

Test:U:37.20V I:0.3500A P:13.02W PF:1.000 Freq:0Hz Lamp Flux:1211.18x1 lm		
NAME: TS100-13W-840	TYPE:Downlight	SERIAL No.:
SPEC.:4000K	DIM.: L110mm*W110mm*H80mm	
MFR.: NEKO LIGHTING AG		

Flux out:827.6 lm



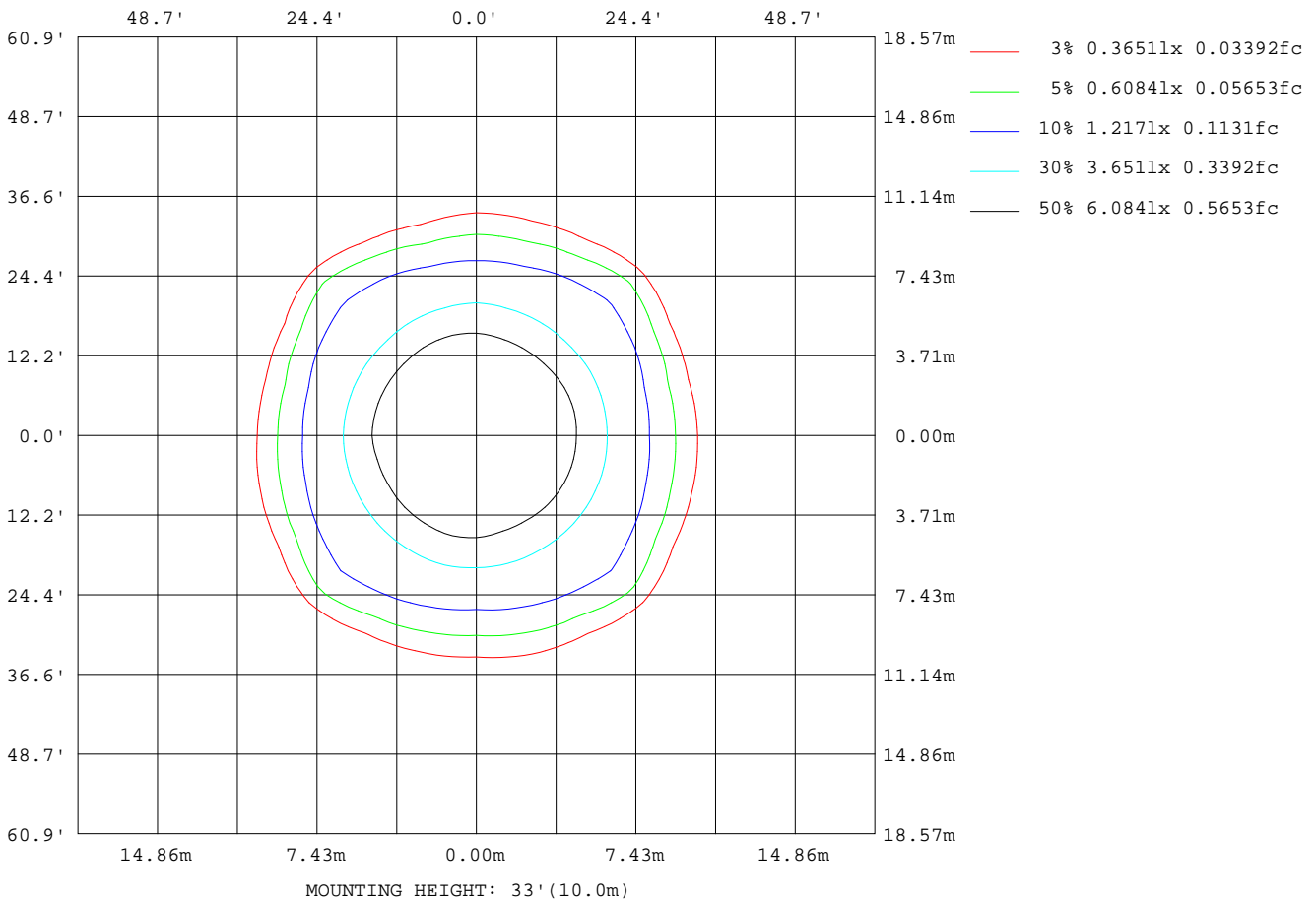
Note:The Curves indicate the illuminated area and the average illumination when the luminaire is at different distance.

C Range: 0 - 360DEG
C Interval: 15.0DEG
Test Speed: HIGH
Temperature:25.3DEG
Operators:Myles
Test Date:2018-11-05

γ Range: 0 - 90DEG
γ Interval: 1.0DEG
Test System:EVERFINE GO-2000B_V1 SYSTEM V2.0.362
Humidity:56%
Test Distance:5.850m [K=1.0000]
Remarks:

ISOLUX DIAGRAM

Test:U:37.20V I:0.3500A P:13.02W PF:1.000 Freq:0Hz Lamp Flux:1211.18x1 lm		
NAME: TS100-13W-840	TYPE:Downlight	SERIAL No.:
SPEC.:4000K	DIM.: L110mm*W110mm*H80mm	
MFR.: NEKO LIGHTING AG		



C Range: 0 - 360DEG
 C Interval: 15.0DEG
 Test Speed: HIGH
 Temperature:25.3DEG
 Operators:Myles
 Test Date:2018-11-05

γ Range: 0 - 90DEG
 γ Interval: 1.0DEG
 Test System:EVERFINE GO-2000B_V1 SYSTEM V2.0.362
 Humidity:56%
 Test Distance:5.850m [K=1.0000]
 Remarks:

LED Avg.L Report

Test:U:37.20V I:0.3500A P:13.02W PF:1.000 Freq:0Hz Lamp Flux:1211.18x1 lm		
NAME: TS100-13W-840	TYPE:Downlight	SERIAL No.:
SPEC.:4000K	DIM.: L110mm*W110mm*H80mm	
MFR.: NEKO LIGHTING AG		

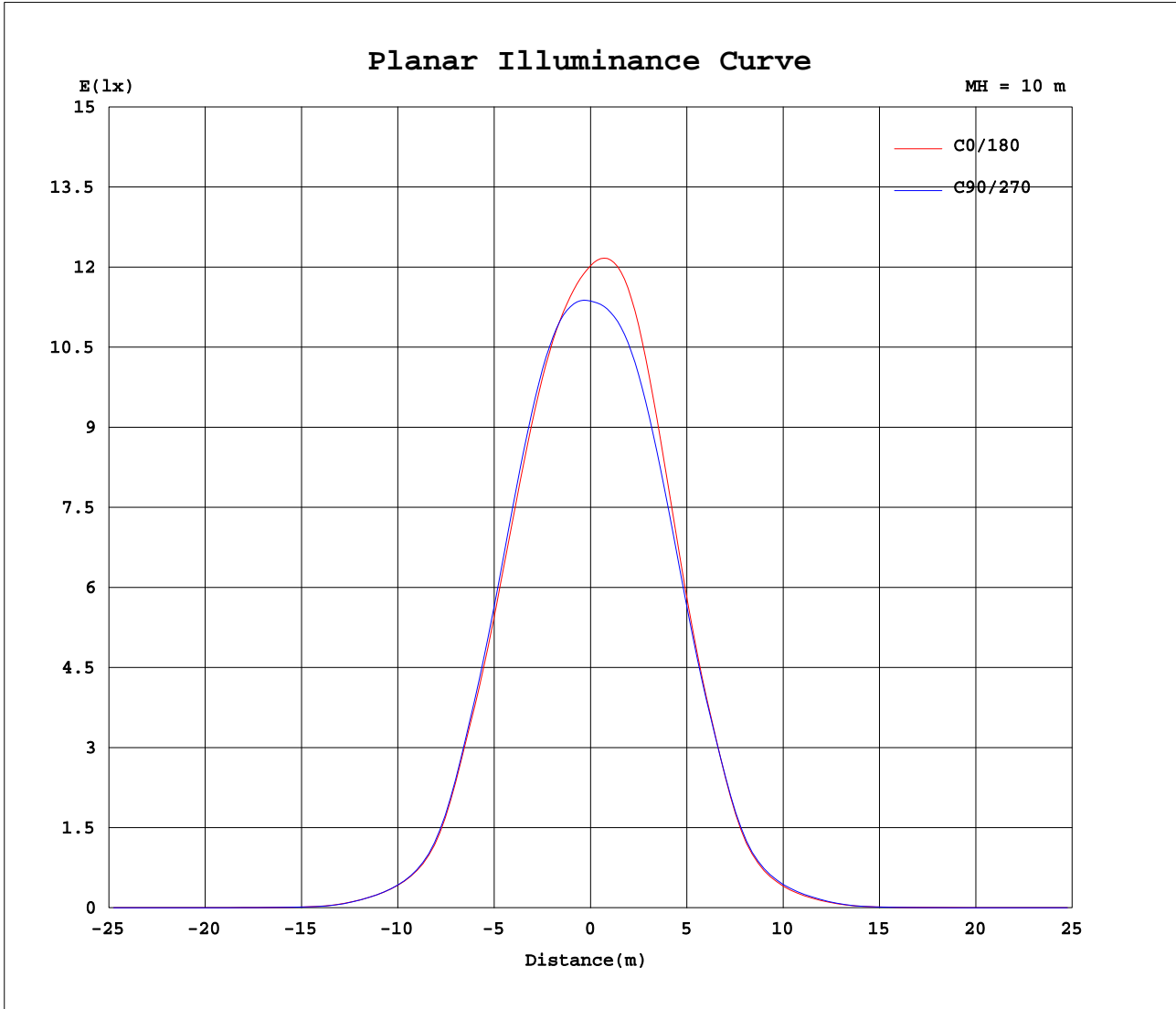
AvgL	cd/m2
L_0~180(65)av	295
L_0~180(75)av	167
L_0~180(85)av	141
L_90~270(65)av	287
L_90~270(75)av	131
L_90~270(85)av	80
L_45(65)av	407
L_45(75)av	200
L_45(85)av	102

Standard: GB/T 29293-2012

C Range: 0 - 360DEG
C Interval: 15.0DEG
Test Speed: HIGH
Temperature:25.3DEG
Operators:Myles
Test Date:2018-11-05

γ Range: 0 - 90DEG
 γ Interval: 1.0DEG
Test System:EVERFINE GO-2000B_V1 SYSTEM V2.0.362
Humidity:56%
Test Distance:5.850m [K=1.0000]
Remarks:

Planar Illuminance Curve



C Range: 0 - 360DEG
 C Interval: 15.0DEG
 Test Speed: HIGH
 Temperature: 25.3DEG
 Operators: Myles
 Test Date: 2018-11-05

γ Range: 0 - 90DEG
 γ Interval: 1.0DEG
 Test System: EVERFINE GO-2000B_V1 SYSTEM V2.0.362
 Humidity: 56%
 Test Distance: 5.850m [K=1.0000]
 Remarks:

LUMINOUS DISTRIBUTION INTENSITY DATA

Test:U:37.20V I:0.3500A P:13.02W PF:1.000 Freq:0Hz Lamp Flux:1211.18x1 lm		
NAME: TS100-13W-840	TYPE:Downlight	SERIAL No.:
SPEC.:4000K	DIM.: L110mm*W110mm*H80mm	
MFR.: NEKO LIGHTING AG		

Table--1

UNIT: cd

C(DEG) γ (DEG)	0	15	30	45	60	75	90	105	120	135	150	165	180	195	210	225	240	255	270
0	1203	1192	1188	1184	1180	1179	1137	1136	1130	1116	1115	1128	1203	1192	1188	1184	1180	1179	1137
5	1170	1155	1154	1143	1132	1127	1144	1148	1143	1125	1111	1124	1230	1227	1223	1226	1228	1229	1134
10	1134	1119	1120	1105	1088	1079	1136	1145	1140	1122	1102	1116	1233	1235	1228	1233	1240	1241	1125
15	1071	1062	1063	1048	1028	1020	1091	1101	1094	1080	1061	1076	1178	1180	1169	1171	1180	1182	1081
20	966	961	962	950	936	934	995	1006	995	984	969	983	1055	1051	1038	1035	1046	1051	989
25	817	817	814	810	800	809	844	855	841	835	826	838	875	863	850	843	853	857	844
30	636	640	639	638	635	645	658	670	657	652	650	656	669	655	645	634	644	648	659
35	427	450	468	473	467	461	437	466	479	481	476	462	444	444	460	454	459	443	447
40	220	237	286	334	293	250	226	249	296	339	296	244	224	225	276	314	284	231	231
45	120	124	136	196	142	133	121	129	142	201	141	126	115	111	127	181	134	112	124
50	57.7	63.4	69.5	77.6	72.7	69.5	57.4	62.9	69.8	77.6	71.8	64.4	53.4	53.9	60.5	67.3	61.2	53.7	60.4
55	13.2	16.9	26.7	33.9	29.2	18.2	12.7	16.2	25.9	32.6	30.2	18.4	13.2	14.4	24.8	25.9	23.6	14.3	13.5
60	4.25	5.28	5.77	7.01	5.42	5.01	4.32	5.40	5.62	6.69	6.13	5.60	4.67	4.77	5.44	5.65	5.38	4.82	4.13
65	1.49	1.70	2.04	2.26	1.97	1.71	1.60	1.79	2.03	2.32	2.18	1.77	1.53	1.37	1.76	1.88	1.76	1.50	1.33
70	0.88	1.05	1.19	1.19	1.13	0.96	0.87	0.99	1.19	1.26	1.24	1.10	0.89	0.83	0.92	0.96	0.99	0.85	0.72
75	0.52	0.63	0.70	0.66	0.60	0.49	0.46	0.54	0.67	0.73	0.75	0.67	0.52	0.51	0.54	0.56	0.54	0.45	0.36
80	0.30	0.35	0.37	0.31	0.28	0.22	0.24	0.25	0.33	0.36	0.41	0.38	0.29	0.29	0.29	0.28	0.24	0.21	0.17
85	0.16	0.15	0.16	0.11	0.11	0.08	0.10	0.09	0.12	0.13	0.15	0.16	0.14	0.12	0.10	0.10	0.07	0.08	0.07
90	0.07	0.07	0.06	0.06	0.06	0.06	0.06	0.06	0.06	0.06	0.06	0.06	0.04	0.04	0.03	0.03	0.03	0.03	0.03

C Range: 0 - 360DEG
 C Interval: 15.0DEG
 Test Speed: HIGH
 Temperature:25.3DEG
 Operators:Myles
 Test Date:2018-11-05

γ Range: 0 - 90DEG
 γ Interval: 1.0DEG
 Test System:EVERFINE GO-2000B_V1 SYSTEM V2.0.362
 Humidity:56%
 Test Distance:5.850m [K=1.0000]
 Remarks:

LUMINOUS DISTRIBUTION INTENSITY DATA

Test:U:37.20V I:0.3500A P:13.02W PF:1.000 Freq:0Hz Lamp Flux:1211.18x1 lm		
NAME: TS100-13W-840	TYPE:Downlight	SERIAL No.:
SPEC.:4000K	DIM.: L110mm*W110mm*H80mm	
MFR.: NEKO LIGHTING AG		

Table--2

UNIT: cd

C(DEG) γ (DEG)	285	300	315	330	345														
0	1136	1130	1116	1115	1128														
5	1127	1120	1111	1124	1136														
10	1108	1101	1098	1122	1133														
15	1058	1049	1050	1077	1087														
20	962	950	950	975	983														
25	814	801	799	816	824														
30	634	625	619	633	637														
35	443	456	455	461	437														
40	233	283	320	282	226														
45	121	135	182	132	115														
50	61.4	67.2	70.2	63.3	54.6														
55	15.7	27.1	29.0	23.2	13.2														
60	4.55	5.25	5.64	5.23	4.46														
65	1.41	1.67	1.85	1.62	1.33														
70	0.81	0.95	0.95	0.92	0.82														
75	0.43	0.51	0.55	0.53	0.50														
80	0.21	0.23	0.26	0.26	0.27														
85	0.08	0.07	0.09	0.09	0.12														
90	0.03	0.03	0.03	0.03	0.04														

C Range: 0 - 360DEG
 C Interval: 15.0DEG
 Test Speed: HIGH
 Temperature:25.3DEG
 Operators:Myles
 Test Date:2018-11-05

γ Range: 0 - 90DEG
 γ Interval: 1.0DEG
 Test System:EVERFINE GO-2000B_V1 SYSTEM V2.0.362
 Humidity:56%
 Test Distance:5.850m [K=1.0000]
 Remarks: