

LED Downlight TAKEO Series T200-25W-930-60



Light Output Ratio:	100.0%	
Luminaire Power:	27.94 W	
SHR Nominal:	0.75	Calculated using the TM5
SHR Maximum:	0.95	fine grid method.

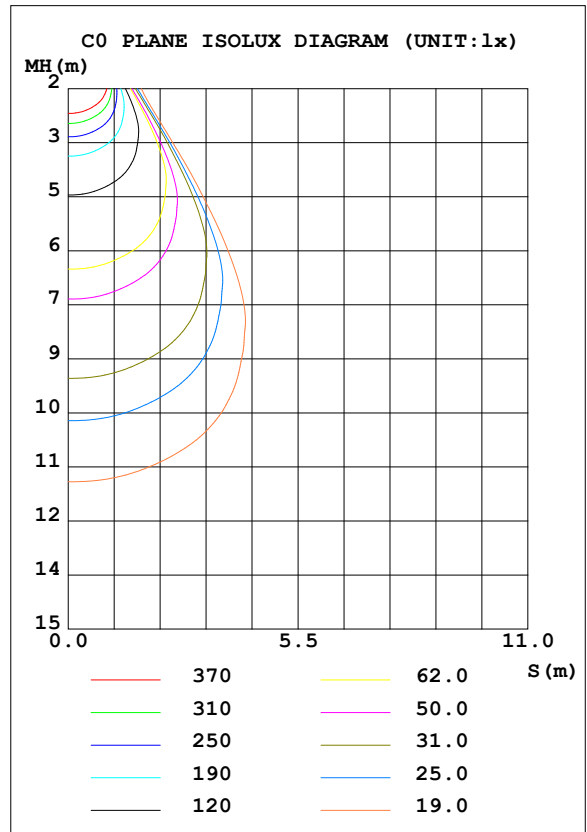
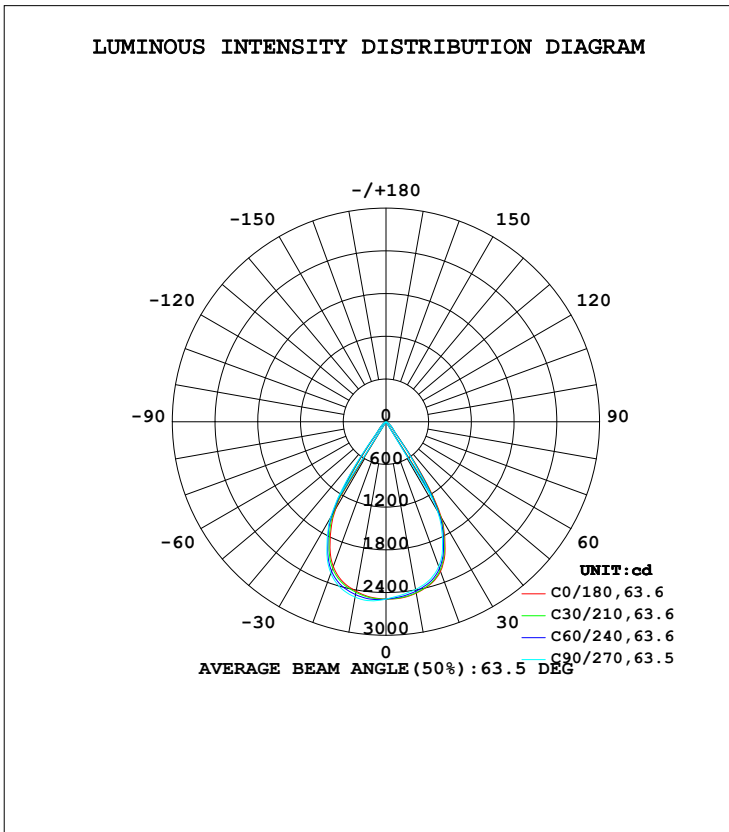
C Range: 0 - 360DEG  
C Interval: 15.0DEG  
Test Speed: HIGH  
Temperature: 25.3DEG  
Operators: Men Yongjian  
Test Date: 2018-07-04

$\gamma$  Range: 0 - 90DEG  
 $\gamma$  Interval: 1.0DEG  
Test System: EVERFINE GO-2000B\_V1 SYSTEM V2.0.288  
Humidity: 56%  
Test Distance: 5.850m [K=1.0000]  
Remarks:

**LUMINAIRE PHOTOMETRIC TEST REPORT**

Test:U:220.3V I:0.1292A P:27.94W PF:0.9663 Freq:49.90Hz Lamp Flux:2373.19x1 lm		
NAME: T200-25W-930-60	TYPE:Downlight	SERIAL No.:
SPEC.:3000K	DIM.: φ218mm*H126mm	
MFR.: NEKO LIGHTING AG		

DATA OF LAMP		PHOTOMETRIC DATA Eff: 84.94 lm/W			
MODEL	CITIZEN-3000K	I <sub>max</sub> (cd)	2532	S/MH (C0/180)	0.90
NOMINAL POWER (W)	28	LOR (%)	100.0	S/MH (C90/270)	0.93
RATED VOLTAGE (V)	220	TOTAL FLUX (lm)	2373.2	η UP, DN (C0-180)	0.0, 49.3
NOMINAL FLUX (lm)	2373.19	CIE CLASS	DIRECT	η UP, DN (C180-360)	0.0, 50.7
LAMPS INSIDE	1	η up (%)	0.0	CIBSE SHR NOM	0.75
TEST VOLTAGE (V)	220	η down (%)	100.0	CIBSE SHR MAX	0.95



C Range: 0 - 360DEG  
 C Interval: 15.0DEG  
 Test Speed: HIGH  
 Temperature: 25.3DEG  
 Operators: Men Yongjian  
 Test Date: 2018-07-04

γ Range: 0 - 90DEG  
 γ Interval: 1.0DEG  
 Test System: EVERFINE GO-2000B\_V1 SYSTEM V2.0.288  
 Humidity: 56%  
 Test Distance: 5.850m [K=1.0000]  
 Remarks:

**ZONAL FLUX DIAGRAM**

ZONAL FLUX DIAGRAM:

$\gamma$	C0	C45	C90	C135	C180	C225	C270	C315	$\gamma$	$\Phi$ zone	$\Phi$ total	%lum,lamp
10	2444	2430	2392	2392	2419	2444	2501	2490	0- 10	235.5	235.5	9.93,9.93
20	2237	2213	2164	2153	2164	2208	2267	2278	10- 20	662.4	897.9	37.8,37.8
30	1563	1529	1444	1403	1420	1491	1573	1602	20- 30	871.1	1769	74.5,74.5
40	206.1	208.7	204.4	193.9	180.7	181.8	192.3	205.6	30- 40	453.4	2222	93.6,93.6
50	81.65	83.83	84.71	80.63	71.62	68.75	68.79	77.35	40- 50	96.60	2319	97.7,97.7
60	25.62	25.93	26.54	26.40	22.43	20.32	19.87	24.23	50- 60	39.86	2359	99.4,99.4
70	5.355	5.738	5.521	4.967	3.672	2.882	2.918	4.331	60- 70	13.17	2372	100,100
80	0.1989	0.1683	0.1991	0.1772	0.1440	0.1596	0.1442	0.1774	70- 80	1.023	2373	100,100
90	0.1507	0.1486	0.1575	0.1489	0.0786	0.0787	0.0831	0.0854	80- 90	0.1517	2373	100,100
100									90-100			
110									100-110			
120									110-120			
130									120-130			
140									130-140			
150									140-150			
160									150-160			
170									160-170			
180									170-180			
DEG	LUMINOUS INTENSITY:cd									UNIT:lm		

Conical surface Flux(90deg): 2279.2 lm

%lum = 96.0%  
%lamp = 96.0%

Conical surface Flux(120deg): 2358.8 lm

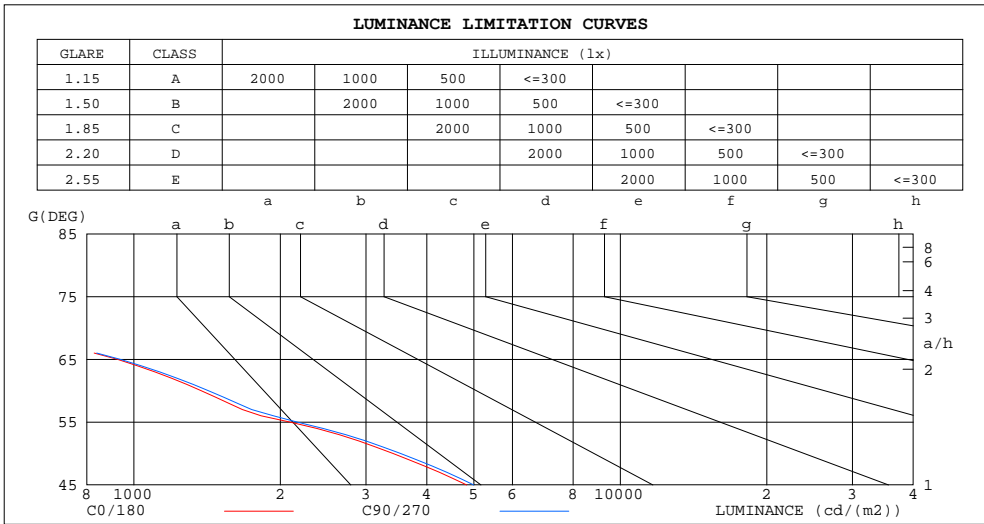
%lum = 99.4%  
%lamp = 99.4%

C Range: 0 - 360DEG  
C Interval: 15.0DEG  
Test Speed: HIGH  
Temperature:25.3DEG  
Operators:Men Yongjian  
Test Date:2018-07-04

$\gamma$  Range: 0 - 90DEG  
 $\gamma$  Interval: 1.0DEG  
Test System:EVERFINE GO-2000B\_V1 SYSTEM V2.0.288  
Humidity:56%  
Test Distance:5.850m [K=1.0000]  
Remarks:

**LUMINANCE LIMITATION CURVES**

Test:U:220.3V I:0.1292A P:27.94W PF:0.9663 Freq:49.90Hz Lamp Flux:2373.19x1 lm		
NAME: T200-25W-930-60	TYPE:Downlight	SERIAL No.:
SPEC.:3000K	DIM.: φ218mm*H126mm	
MFR.: NEKO LIGHTING AG		



LUMINANCE cd/(m2)		
G(DEG)	C0/180	C90/270
85	52	52
80	31	31
75	28	29
70	420	433
65	925	937
60	1375	1423
55	2091	2165
50	3408	3532
45	4832	4997

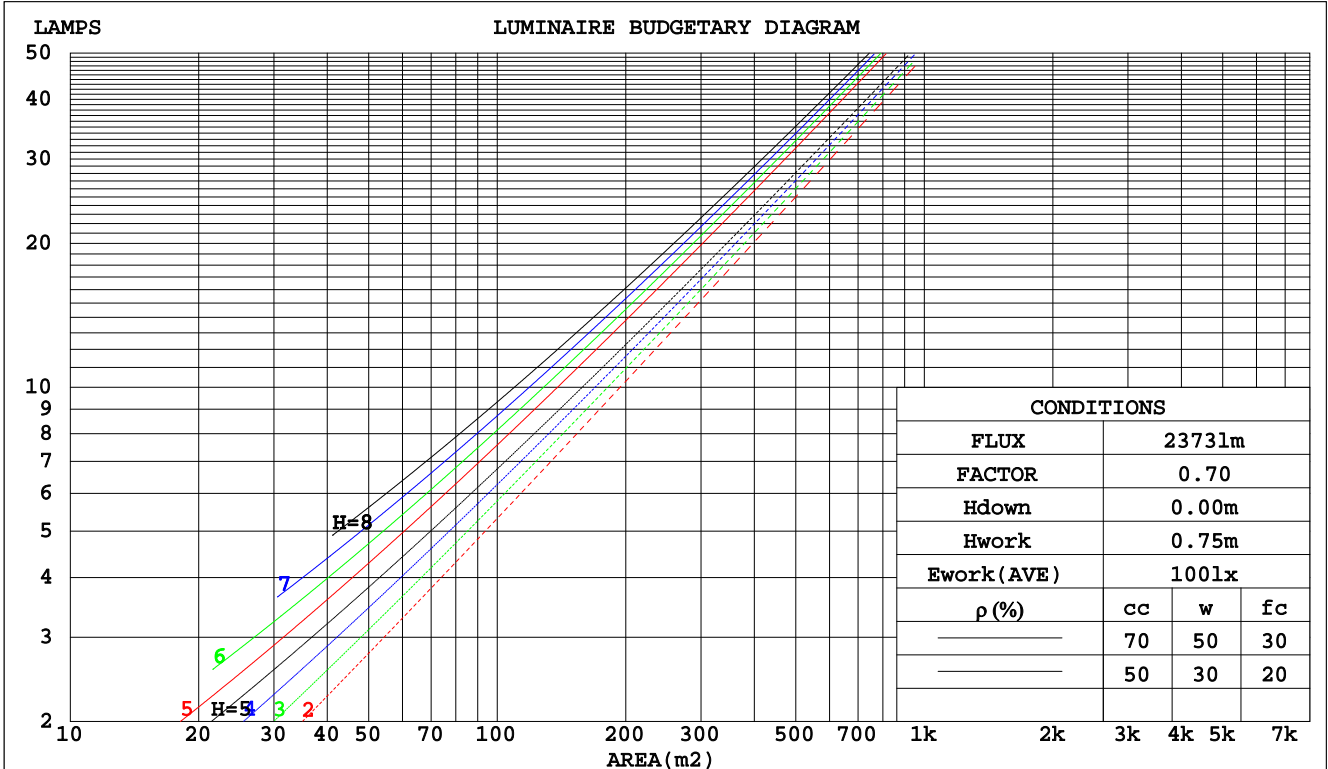
C Range: 0 - 360DEG  
 C Interval: 15.0DEG  
 Test Speed: HIGH  
 Temperature:25.3DEG  
 Operators:Men Yongjian  
 Test Date:2018-07-04

γ Range: 0 - 90DEG  
 γ Interval: 1.0DEG  
 Test System:EVERFINE GO-2000B\_V1 SYSTEM V2.0.288  
 Humidity:56%  
 Test Distance:5.850m [K=1.0000]  
 Remarks:

**CU AND LUMINAIRE BUDGETARY ESTIMATE DIAGRAM**

Test:U:220.3V I:0.1292A P:27.94W PF:0.9663 Freq:49.90Hz Lamp Flux:2373.19x1 lm		
NAME: T200-25W-930-60	TYPE:Downlight	SERIAL No.:
SPEC.:3000K	DIM.: φ218mm*H126mm	
MFR.: NEKO LIGHTING AG		

pcc	80%			70%			50%			30%			10%			0
	50%	30%	10%	50%	30%	10%	50%	30%	10%	50%	30%	10%	50%	30%	10%	0
ρw																0
ρfc	20%			20%			20%			20%			20%			0
RCR	RCR:Room Cavity Ratio      Coefficients of Utilization(CU)															
0.0	1.19	1.19	1.19	1.16	1.16	1.16	1.11	1.11	1.11	1.06	1.06	1.06	1.02	1.02	1.02	.00
1.0	1.11	1.08	1.06	1.09	1.06	1.04	1.05	1.03	1.01	1.01	.99	.98	.97	.96	.95	.94
2.0	1.03	.99	.96	1.01	.98	.95	.98	.95	.93	.95	.93	.91	.92	.91	.89	.87
3.0	.96	.91	.87	.95	.90	.87	.92	.88	.85	.90	.87	.84	.88	.85	.83	.81
4.0	.90	.84	.80	.89	.84	.80	.87	.82	.79	.85	.81	.78	.83	.80	.77	.76
5.0	.84	.79	.74	.83	.78	.74	.82	.77	.73	.80	.76	.73	.78	.75	.72	.70
6.0	.79	.73	.69	.78	.73	.69	.77	.72	.68	.75	.71	.68	.74	.70	.67	.66
7.0	.74	.68	.64	.74	.68	.64	.72	.67	.64	.71	.67	.63	.70	.66	.63	.62
8.0	.70	.64	.60	.70	.64	.60	.68	.63	.60	.67	.63	.60	.67	.62	.59	.58
9.0	.66	.60	.56	.66	.60	.56	.65	.60	.56	.64	.59	.56	.63	.59	.56	.54
10.0	.63	.57	.53	.62	.57	.53	.61	.56	.53	.61	.56	.53	.60	.56	.53	.51



C Range: 0 - 360DEG  
 C Interval: 15.0DEG  
 Test Speed: HIGH  
 Temperature:25.3DEG  
 Operators:Men Yongjian  
 Test Date:2018-07-04

γ Range: 0 - 90DEG  
 γ Interval: 1.0DEG  
 Test System:EVERFINE GO-2000B\_V1 SYSTEM V2.0.288  
 Humidity:56%  
 Test Distance:5.850m [K=1.0000]  
 Remarks:

WEC AND CCEC

Test:U:220.3V I:0.1292A P:27.94W PF:0.9663 Freq:49.90Hz Lamp Flux:2373.19x1 lm		
NAME: T200-25W-930-60	TYPE:Downlight	SERIAL No.:
SPEC.:3000K	DIM.: φ218mm*H126mm	
MFR.: NEKO LIGHTING AG		

ρcc	80%			70%			50%			30%			10%			0
ρw	50%	30%	10%	50%	30%	10%	50%	30%	10%	50%	30%	10%	50%	30%	10%	0
ρfc	20%			20%			20%			20%			20%			0
RCR	RCR:Room Cavity Ratio						Wall Exitance Coefficients(WEC)									
0.0																
1.0	.177	.101	.032	.170	.097	.031	.158	.090	.029	.146	.084	.027	.135	.078	.025	
2.0	.170	.093	.029	.164	.090	.028	.153	.085	.027	.144	.081	.025	.135	.076	.024	
3.0	.162	.086	.026	.157	.084	.025	.148	.080	.024	.140	.077	.023	.132	.073	.023	
4.0	.154	.080	.024	.150	.079	.023	.142	.076	.023	.135	.073	.022	.128	.070	.021	
5.0	.147	.075	.022	.144	.074	.021	.137	.071	.021	.130	.069	.020	.125	.067	.020	
6.0	.141	.071	.020	.137	.069	.020	.131	.067	.020	.126	.065	.019	.121	.064	.019	
7.0	.135	.067	.019	.132	.066	.019	.126	.064	.018	.121	.062	.018	.117	.061	.018	
8.0	.129	.063	.018	.126	.062	.018	.122	.061	.017	.117	.059	.017	.113	.058	.017	
9.0	.124	.060	.017	.121	.059	.017	.117	.058	.016	.113	.057	.016	.109	.056	.016	
10.0	.119	.057	.016	.117	.056	.016	.113	.055	.016	.109	.054	.015	.106	.053	.015	

ρcc	80%			70%			50%			30%			10%			0
ρw	50%	30%	10%	50%	30%	10%	50%	30%	10%	50%	30%	10%	50%	30%	10%	0
ρfc	20%			20%			20%			20%			20%			0
RCR	RCR:Room Cavity Ratio						Ceiling Cavity Exitance Coefficients(CCEC)									
0.0	.190	.190	.190	.163	.163	.163	.111	.111	.111	.064	.064	.064	.020	.020	.020	
1.0	.171	.157	.145	.146	.135	.125	.100	.093	.086	.058	.054	.050	.018	.017	.016	
2.0	.156	.133	.113	.134	.114	.097	.092	.079	.068	.053	.046	.040	.017	.015	.013	
3.0	.144	.114	.090	.123	.098	.078	.085	.068	.054	.049	.040	.032	.016	.013	.011	
4.0	.133	.099	.072	.115	.085	.063	.079	.060	.044	.046	.035	.026	.015	.011	.009	
5.0	.125	.087	.060	.107	.076	.052	.074	.053	.037	.043	.031	.022	.014	.010	.007	
6.0	.118	.078	.050	.101	.068	.043	.070	.047	.031	.040	.028	.018	.013	.009	.006	
7.0	.111	.070	.042	.096	.061	.037	.066	.043	.026	.038	.025	.015	.012	.008	.005	
8.0	.106	.064	.036	.091	.056	.031	.063	.039	.022	.037	.023	.013	.012	.008	.004	
9.0	.101	.059	.031	.087	.051	.027	.060	.036	.019	.035	.021	.012	.011	.007	.004	
10.0	.096	.055	.027	.083	.048	.024	.057	.033	.017	.033	.020	.010	.011	.006	.003	

C Range: 0 - 360DEG  
 C Interval: 15.0DEG  
 Test Speed: HIGH  
 Temperature:25.3DEG  
 Operators:Men Yongjian  
 Test Date:2018-07-04

γ Range: 0 - 90DEG  
 γ Interval: 1.0DEG  
 Test System:EVERFINE GO-2000B\_V1 SYSTEM V2.0.288  
 Humidity:56%  
 Test Distance:5.850m [K=1.0000]  
 Remarks:

UGR(Unified Glare Rating) Table

Test:U:220.3V I:0.1292A P:27.94W PF:0.9663 Freq:49.90Hz Lamp Flux:2373.19x1 lm		
NAME: T200-25W-930-60	TYPE:Downlight	SERIAL No.:
SPEC.:3000K	DIM.: φ218mm*H126mm	
MFR.: NEKO LIGHTING AG		

ceiling/cavity	0.7	0.7	0.5	0.5	0.3	0.7	0.7	0.5	0.5	0.3
walls	0.5	0.3	0.5	0.3	0.3	0.5	0.3	0.5	0.3	0.3
working plane	0.2	0.2	0.2	0.2	0.2	0.2	0.2	0.2	0.2	0.2
Room dimensions	Viewed crosswise					Viewed endwise				
x = 2H y = 2H	11.9	12.9	12.1	13.0	13.2	11.4	12.4	11.6	12.5	12.7
3H	11.8	12.6	12.0	12.8	13.0	11.3	12.1	11.5	12.3	12.5
4H	11.7	12.5	12.0	12.7	13.0	11.2	12.0	11.5	12.2	12.4
6H	11.6	12.4	11.9	12.6	12.9	11.1	11.9	11.4	12.1	12.4
8H	11.6	12.3	11.9	12.5	12.8	11.0	11.8	11.4	12.0	12.3
12H	11.5	12.2	11.8	12.5	12.8	11.0	11.7	11.3	12.0	12.3
4H 2H	11.7	12.5	12.0	12.7	13.0	11.2	12.0	11.5	12.2	12.5
3H	11.6	12.3	11.9	12.5	12.8	11.1	11.8	11.4	12.0	12.3
4H	11.5	12.1	11.8	12.4	12.7	11.0	11.6	11.3	11.9	12.2
6H	11.4	11.9	11.7	12.3	12.6	10.9	11.4	11.2	11.8	12.1
8H	11.3	11.8	11.7	12.2	12.6	10.8	11.3	11.2	11.7	12.1
12H	11.3	11.7	11.7	12.1	12.5	10.8	11.2	11.2	11.6	12.0
8H 4H	11.3	11.8	11.7	12.2	12.6	10.8	11.3	11.2	11.7	12.1
6H	11.2	11.6	11.6	12.0	12.5	10.7	11.1	11.1	11.5	12.0
8H	11.2	11.5	11.6	12.0	12.4	10.7	11.0	11.1	11.5	11.9
12H	11.1	11.4	11.6	11.9	12.3	10.6	10.9	11.1	11.4	11.8
12H 4H	11.3	11.7	11.7	12.1	12.5	10.8	11.2	11.2	11.6	12.0
6H	11.2	11.5	11.6	12.0	12.4	10.7	11.0	11.1	11.5	11.9
8H	11.1	11.4	11.6	11.9	12.3	10.6	10.9	11.1	11.4	11.8
Variations with the observer position at spacings:										
S = 1.0H	+ 3.9 / - 5.9					+ 3.2 / - 5.2				
1.5H	+ 5.3 / - 4.3					+ 4.4 / - 3.9				
2.0H	+ 3.8 / - 4.4					+ 3.8 / - 4.5				

CIE Pub.117, 2373 lm Total Lamp Luminous Flux Correct (8log(F/F0) = 3.0)

C Range: 0 - 360DEG  
 C Interval: 15.0DEG  
 Test Speed: HIGH  
 Temperature:25.3DEG  
 Operators:Men Yongjian  
 Test Date:2018-07-04

γ Range: 0 - 90DEG  
 γ Interval: 1.0DEG  
 Test System:EVERFINE GO-2000B\_V1 SYSTEM V2.0.288  
 Humidity:56%  
 Test Distance:5.850m [K=1.0000]  
 Remarks:

UTILIZATION FACTORS TABLE

Test:U:220.3V I:0.1292A P:27.94W PF:0.9663 Freq:49.90Hz Lamp Flux:2373.19x1 lm		
NAME: T200-25W-930-60	TYPE:Downlight	SERIAL No.:
SPEC.:3000K	DIM.: φ218mm*H126mm	
MFR.: NEKO LIGHTING AG		

REFLECTANCE										
Ceiling	0.8	0.8	0.8	0.7	0.7	0.7	0.5	0.5	0.5	0
Walls	0.7	0.5	0.3	0.7	0.5	0.3	0.7	0.5	0.3	0
Working plane	0.2	0.2	0.2	0.2	0.2	0.2	0.2	0.2	0.2	0
ROOM INDEX	UTILIZATION FACTORS(PERCENT) $k(RI) \times RCR = 5$									
k = 0.60	88	81	77	87	81	77	86	81	77	74
0.80	95	89	85	94	89	85	93	88	85	81
1.00	99	94	90	99	93	90	97	93	89	86
1.25	103	98	95	102	98	94	100	97	94	90
1.50	106	101	98	105	101	98	103	99	97	92
2.00	109	105	102	107	104	101	105	102	99	94
2.50	110	107	104	109	105	103	106	103	101	95
3.00	112	109	106	110	107	105	107	104	103	96
4.00	114	111	109	112	110	108	108	106	105	98
5.00	115	113	111	113	111	110	109	108	106	99
ROOM INDEX	UF(total)									Direct
According to DIN EN 13032-2 2004			Suspended				SHRNOM = 1.25			

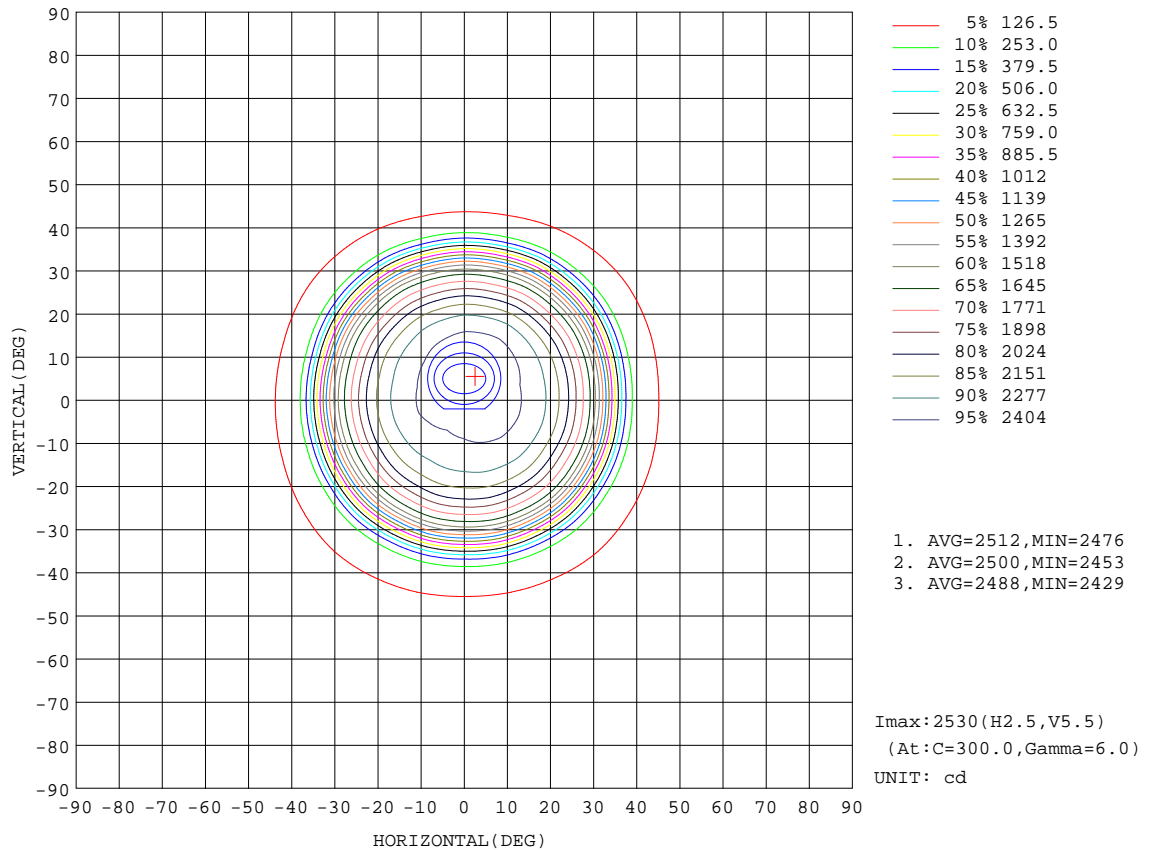
C Range: 0 - 360DEG  
 C Interval: 15.0DEG  
 Test Speed: HIGH  
 Temperature:25.3DEG  
 Operators:Men Yongjian  
 Test Date:2018-07-04

γ Range: 0 - 90DEG  
 γ Interval: 1.0DEG  
 Test System:EVERFINE GO-2000B\_V1 SYSTEM V2.0.288  
 Humidity:56%  
 Test Distance:5.850m [K=1.0000]  
 Remarks:



**ISOCANDELA DIAGRAM**

Test:U:220.3V I:0.1292A P:27.94W PF:0.9663 Freq:49.90Hz Lamp Flux:2373.19x1 lm		
NAME: T200-25W-930-60	TYPE:Downlight	SERIAL No.:
SPEC.:3000K	DIM.: φ218mm*H126mm	
MFR.: NEKO LIGHTING AG		



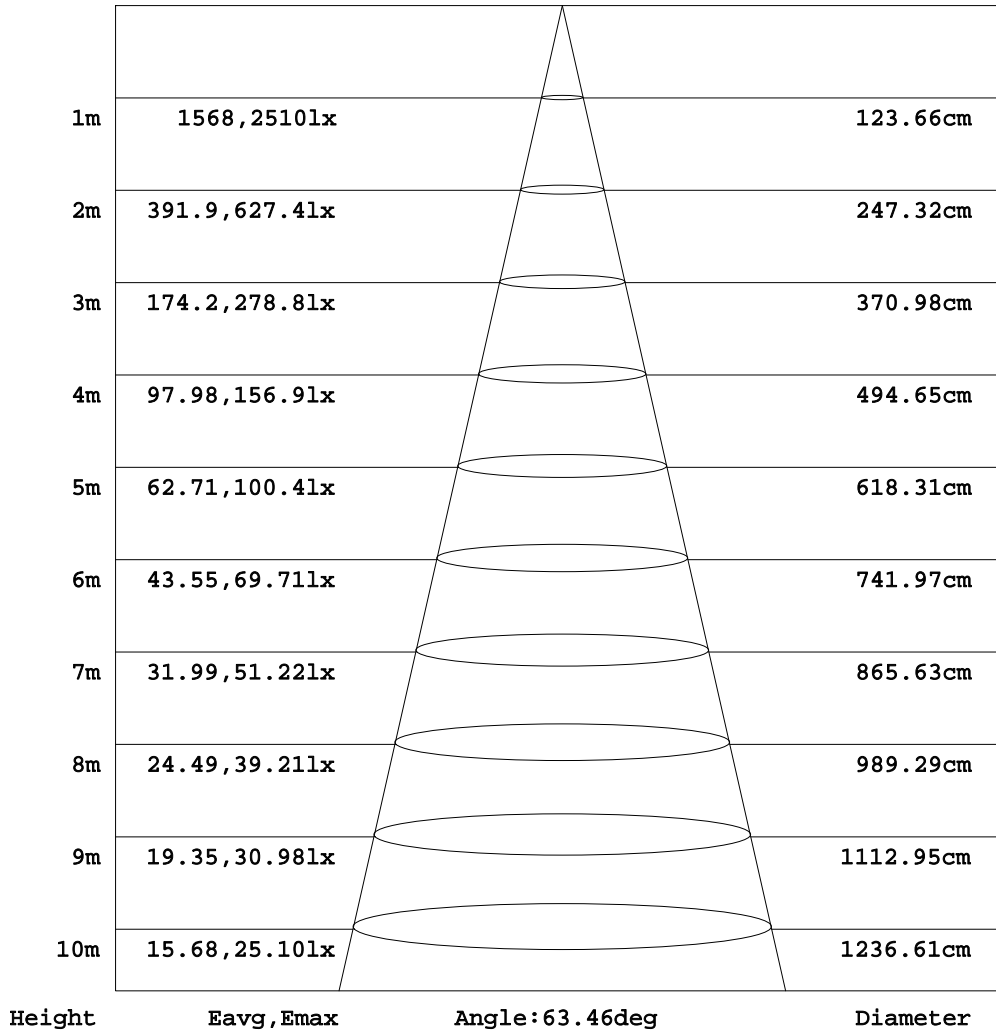
C Range: 0 - 360DEG  
C Interval: 15.0DEG  
Test Speed: HIGH  
Temperature: 25.3DEG  
Operators: Men Yongjian  
Test Date: 2018-07-04

γ Range: 0 - 90DEG  
γ Interval: 1.0DEG  
Test System: EVERFINE GO-2000B\_V1 SYSTEM V2.0.288  
Humidity: 56%  
Test Distance: 5.850m [K=1.0000]  
Remarks:

**AAI Figure**

Test:U:220.3V I:0.1292A P:27.94W PF:0.9663 Freq:49.90Hz Lamp Flux:2373.19x1 lm		
NAME: T200-25W-930-60	TYPE:Downlight	SERIAL No.:
SPEC.:3000K	DIM.: φ218mm*H126mm	
MFR.: NEKO LIGHTING AG		

Flux out:1923 lm



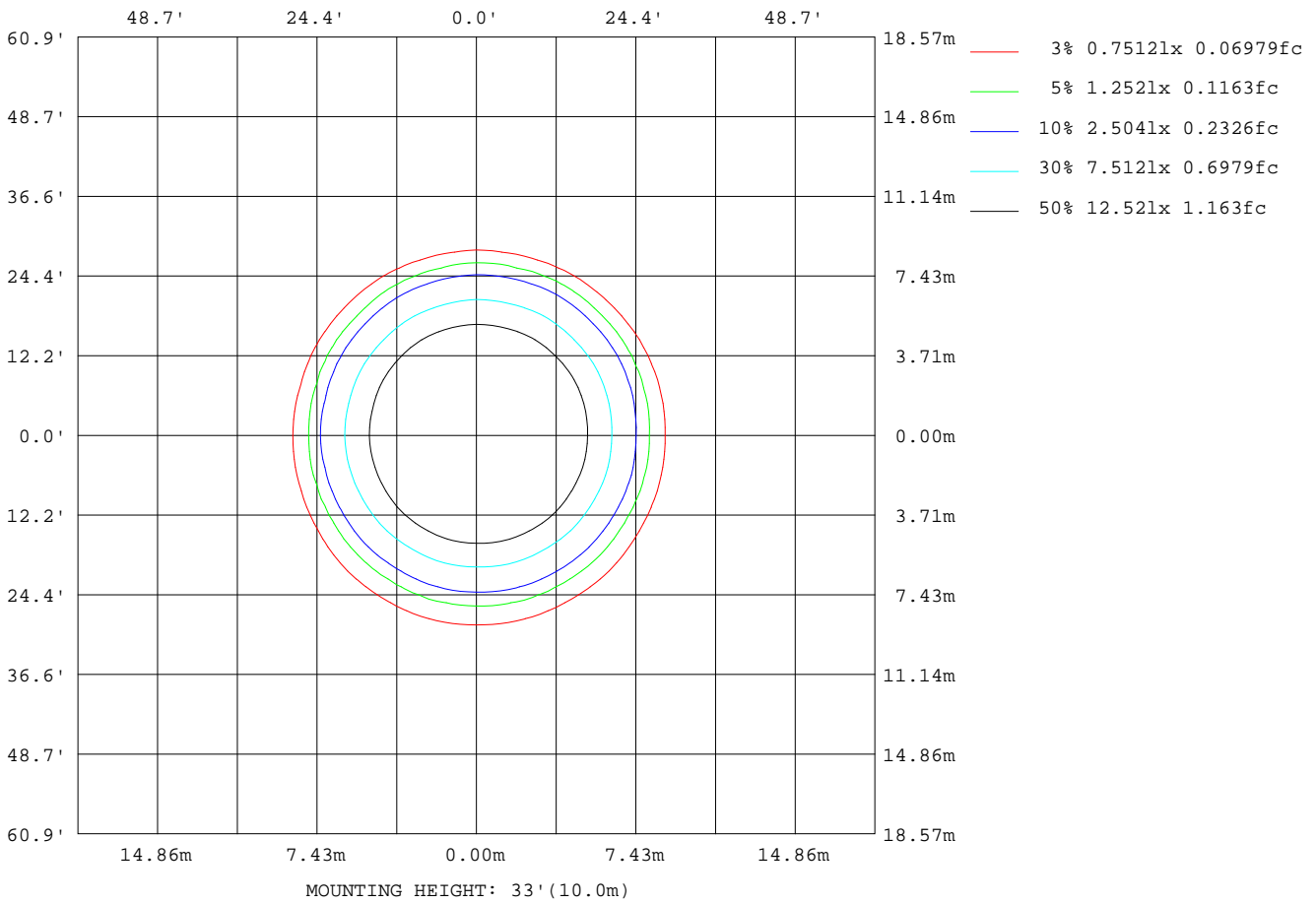
Note:The Curves indicate the illuminated area and the average illumination when the luminaire is at different distance.

C Range: 0 - 360DEG  
C Interval: 15.0DEG  
Test Speed: HIGH  
Temperature:25.3DEG  
Operators:Men Yongjian  
Test Date:2018-07-04

γ Range: 0 - 90DEG  
γ Interval: 1.0DEG  
Test System:EVERFINE GO-2000B\_V1 SYSTEM V2.0.288  
Humidity:56%  
Test Distance:5.850m [K=1.0000]  
Remarks:

**ISOLUX DIAGRAM**

Test:U:220.3V I:0.1292A P:27.94W PF:0.9663 Freq:49.90Hz Lamp Flux:2373.19x1 lm		
NAME: T200-25W-930-60	TYPE:Downlight	SERIAL No.:
SPEC.:3000K	DIM.: φ218mm*H126mm	
MFR.: NEKO LIGHTING AG		



C Range: 0 - 360DEG  
 C Interval: 15.0DEG  
 Test Speed: HIGH  
 Temperature:25.3DEG  
 Operators:Men Yongjian  
 Test Date:2018-07-04

γ Range: 0 - 90DEG  
 γ Interval: 1.0DEG  
 Test System:EVERFINE GO-2000B\_V1 SYSTEM V2.0.288  
 Humidity:56%  
 Test Distance:5.850m [K=1.0000]  
 Remarks:

LED Avg.L Report

Test:U:220.3V I:0.1292A P:27.94W PF:0.9663 Freq:49.90Hz Lamp Flux:2373.19x1 lm		
NAME: T200-25W-930-60	TYPE:Downlight	SERIAL No.:
SPEC.:3000K	DIM.: φ218mm*H126mm	
MFR.: NEKO LIGHTING AG		

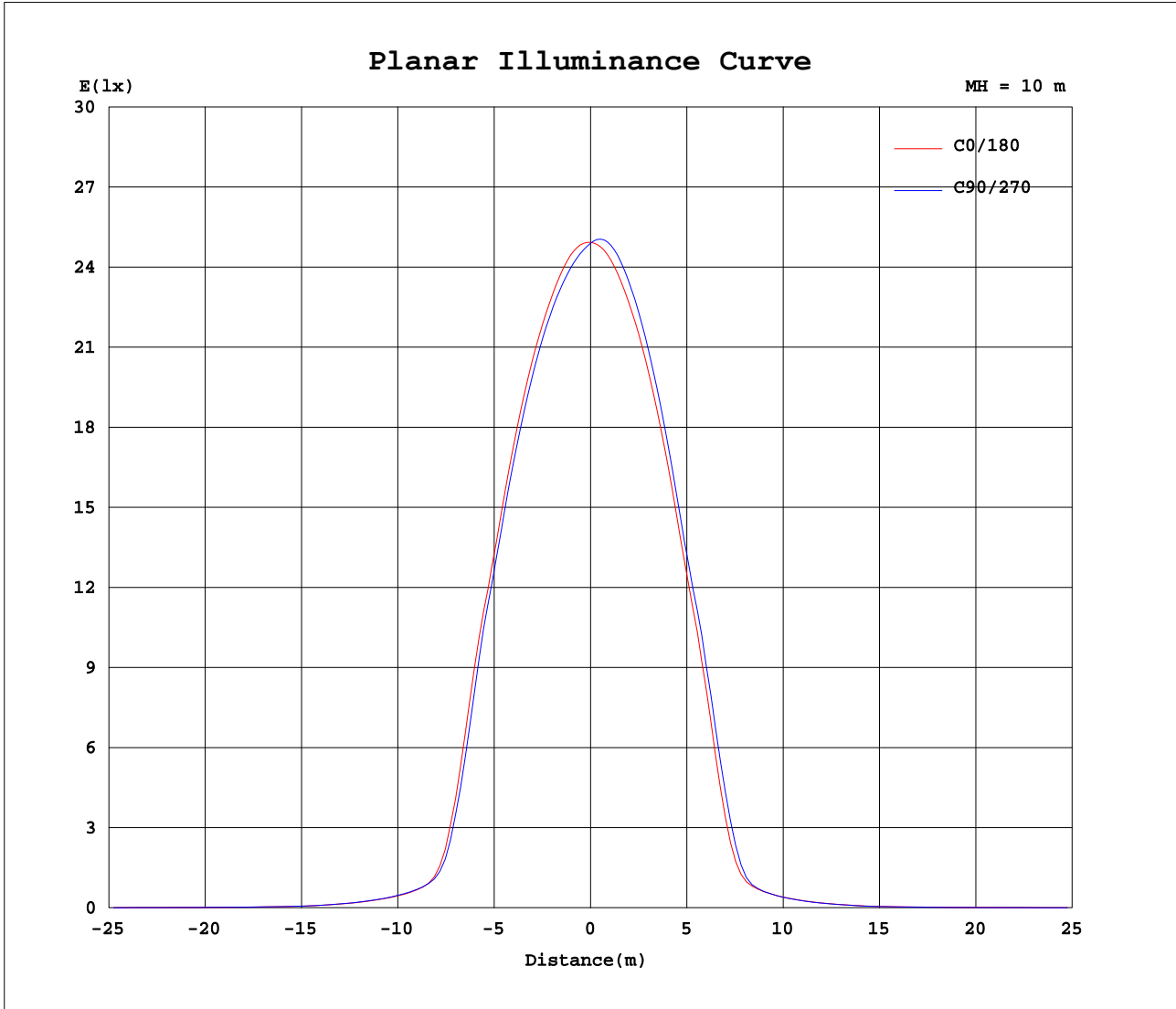
AvgL	cd/m2
L_0~180 (65) av	842
L_0~180 (75) av	25
L_0~180 (85) av	42
L_90~270 (65) av	792
L_90~270 (75) av	25
L_90~270 (85) av	42
L_45 (65) av	837
L_45 (75) av	26
L_45 (85) av	42

Standard: GB/T 29293-2012

C Range: 0 - 360DEG  
C Interval: 15.0DEG  
Test Speed: HIGH  
Temperature:25.3DEG  
Operators:Men Yongjian  
Test Date:2018-07-04

γ Range: 0 - 90DEG  
γ Interval: 1.0DEG  
Test System:EVERFINE GO-2000B\_V1 SYSTEM V2.0.288  
Humidity:56%  
Test Distance:5.850m [K=1.0000]  
Remarks:

Planar Illuminance Curve



C Range: 0 - 360DEG  
 C Interval: 15.0DEG  
 Test Speed: HIGH  
 Temperature: 25.3DEG  
 Operators: Men Yongjian  
 Test Date: 2018-07-04

$\gamma$  Range: 0 - 90DEG  
 $\gamma$  Interval: 1.0DEG  
 Test System: EVERFINE GO-2000B\_V1 SYSTEM V2.0.288  
 Humidity: 56%  
 Test Distance: 5.850m [K=1.0000]  
 Remarks:

**LUMINOUS DISTRIBUTION INTENSITY DATA**

Test:U:220.3V I:0.1292A P:27.94W PF:0.9663 Freq:49.90Hz Lamp Flux:2373.19x1 lm		
NAME: T200-25W-930-60	TYPE:Downlight	SERIAL No.:
SPEC.:3000K	DIM.: $\varnothing$ 218mm*H126mm	
MFR.: NEKO LIGHTING AG		

Table--1

UNIT: cd

C (DEG) γ (DEG)	0	15	30	45	60	75	90	105	120	135	150	165	180	195	210	225	240	255	270
0	2490	2490	2490	2490	2490	2490	2490	2490	2490	2490	2490	2490	2490	2490	2490	2490	2490	2490	2490
5	2486	2483	2479	2472	2463	2453	2444	2438	2437	2446	2459	2473	2473	2476	2482	2489	2501	2512	2524
10	2444	2443	2437	2430	2417	2405	2392	2385	2383	2392	2403	2417	2419	2421	2433	2444	2465	2482	2501
15	2372	2372	2363	2356	2341	2329	2314	2307	2302	2311	2316	2326	2330	2335	2350	2365	2389	2405	2425
20	2237	2233	2220	2213	2194	2182	2164	2157	2146	2153	2152	2155	2164	2169	2192	2208	2236	2247	2267
25	1965	1959	1939	1936	1912	1903	1881	1875	1855	1854	1839	1841	1859	1862	1894	1907	1939	1943	1967
30	1563	1565	1533	1529	1490	1469	1444	1429	1407	1403	1393	1395	1420	1436	1466	1491	1537	1539	1573
35	743	748	703	707	666	666	636	627	600	598	582	584	614	617	657	672	732	738	787
40	206	209	205	209	206	208	204	204	197	194	184	180	181	177	182	182	187	186	192
45	127	130	129	132	131	133	132	133	129	126	119	115	114	112	112	111	112	111	112
50	81.6	82.7	82.5	83.8	83.9	85.0	84.7	84.9	82.5	80.6	75.7	72.5	71.6	69.6	69.8	68.7	68.6	67.7	68.8
55	44.7	45.7	45.2	46.3	45.9	47.1	46.3	46.7	45.2	44.5	39.9	37.5	36.9	34.7	34.9	33.7	33.6	32.7	33.2
60	25.6	25.9	25.6	25.9	25.8	26.5	26.5	27.0	26.6	26.4	24.6	23.3	22.4	21.2	21.0	20.3	20.2	19.5	19.9
65	14.6	14.7	14.3	14.6	14.5	14.8	14.8	15.1	14.8	14.6	13.3	12.5	12.0	11.2	11.0	10.5	10.4	9.89	10.2
70	5.35	5.57	5.45	5.74	5.55	5.68	5.52	5.71	5.22	4.97	4.05	3.70	3.67	3.26	3.20	2.88	2.91	2.69	2.92
75	0.27	0.25	0.27	0.27	0.27	0.28	0.28	0.26	0.27	0.25	0.26	0.23	0.22	0.23	0.20	0.22	0.20	0.23	0.21
80	0.20	0.17	0.19	0.17	0.19	0.18	0.20	0.18	0.20	0.18	0.19	0.17	0.14	0.17	0.14	0.16	0.14	0.16	0.14
85	0.17	0.16	0.17	0.15	0.17	0.16	0.17	0.16	0.17	0.14	0.16	0.15	0.10	0.12	0.10	0.12	0.10	0.12	0.10
90	0.15	0.15	0.15	0.15	0.15	0.15	0.16	0.15	0.15	0.15	0.15	0.14	0.08	0.08	0.08	0.08	0.08	0.09	0.08

C Range: 0 - 360DEG  
 C Interval: 15.0DEG  
 Test Speed: HIGH  
 Temperature:25.3DEG  
 Operators:Men Yongjian  
 Test Date:2018-07-04

γ Range: 0 - 90DEG  
 γ Interval: 1.0DEG  
 Test System:EVERFINE GO-2000B\_V1 SYSTEM V2.0.288  
 Humidity:56%  
 Test Distance:5.850m [K=1.0000]  
 Remarks:

**LUMINOUS DISTRIBUTION INTENSITY DATA**

Test:U:220.3V I:0.1292A P:27.94W PF:0.9663 Freq:49.90Hz Lamp Flux:2373.19x1 lm		
NAME: T200-25W-930-60	TYPE:Downlight	SERIAL No.:
SPEC.:3000K	DIM.: φ218mm*H126mm	
MFR.: NEKO LIGHTING AG		

Table--2

UNIT: cd

C (DEG)\γ (DEG)	285	300	315	330	345													
0	2490	2490	2490	2490	2490													
5	2528	2531	2520	2505	2488													
10	2505	2509	2490	2471	2447													
15	2428	2436	2419	2399	2375													
20	2270	2287	2278	2265	2245													
25	1972	2001	1998	2002	1984													
30	1571	1608	1602	1615	1592													
35	787	837	819	834	793													
40	193	204	206	214	213													
45	113	118	122	128	129													
50	69.8	73.7	77.4	81.4	83.6													
55	34.0	38.2	41.5	45.1	46.5													
60	20.4	22.3	24.2	26.0	26.6													
65	10.6	11.7	13.1	14.5	15.2													
70	3.05	3.68	4.33	5.13	5.68													
75	0.23	0.22	0.25	0.23	0.27													
80	0.17	0.15	0.18	0.16	0.18													
85	0.13	0.11	0.13	0.11	0.14													
90	0.09	0.08	0.09	0.08	0.09													

C Range: 0 - 360DEG      γ Range: 0 - 90DEG  
 C Interval: 15.0DEG      γ Interval: 1.0DEG  
 Test Speed: HIGH      Test System:EVERFINE GO-2000B\_V1 SYSTEM V2.0.288  
 Temperature:25.3DEG      Humidity:56%  
 Operators:Men Yongjian      Test Distance:5.850m [K=1.0000]  
 Test Date:2018-07-04      Remarks: