

T150-25W-TW-965-60



| | | |
|---------------------|---------|--------------------------|
| Light Output Ratio: | 100.0% | |
| Luminaire Power: | 25.13 W | |
| SHR Nominal: | 1.00 | Calculated using the TM5 |
| SHR Maximum: | 1.00 | fine grid method. |

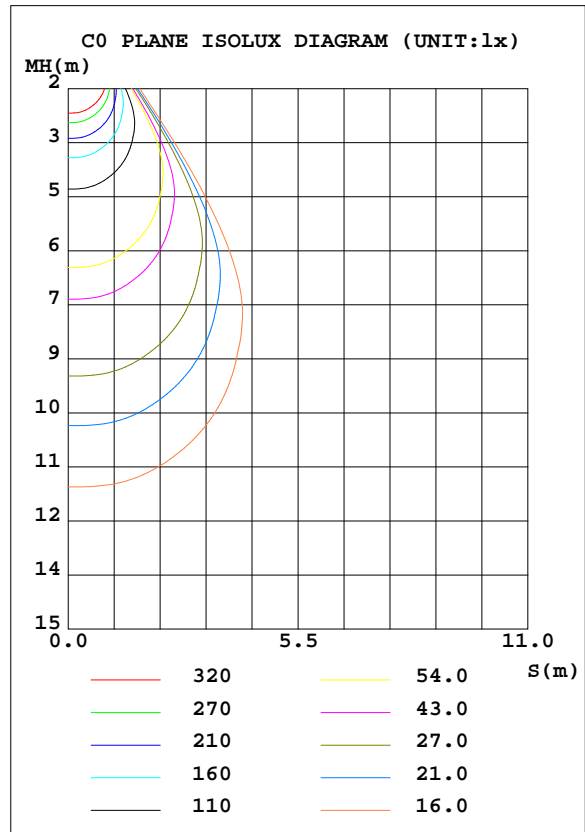
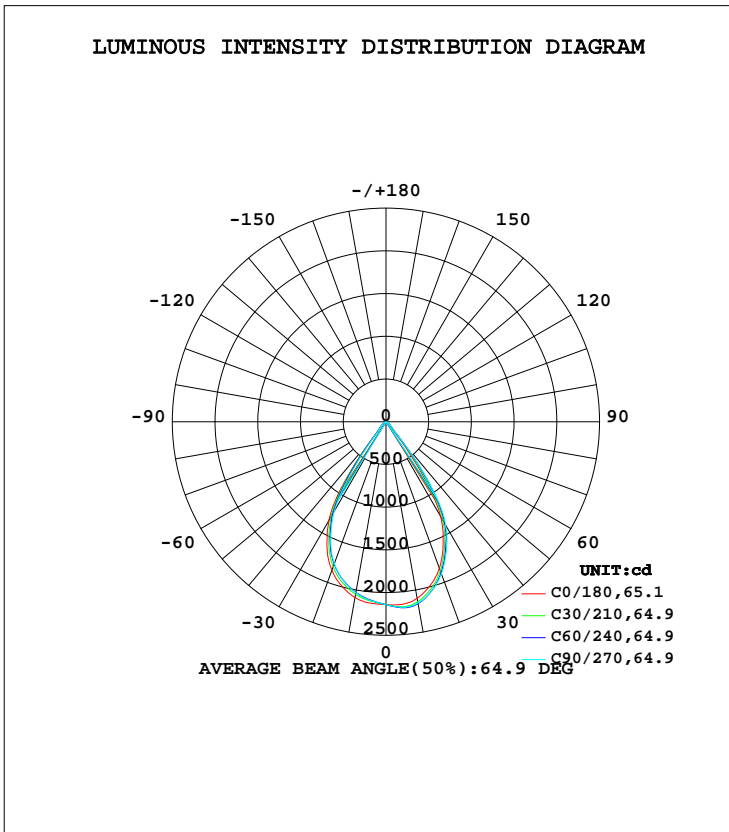
C Range: 0 - 360DEG
C Interval: 15.0DEG
Test Speed: HIGH
Temperature: 25.3DEG
Operators: Jason
Test Date: 2020-08-29

γ Range: 0 - 90DEG
 γ Interval: 0.5DEG
Test System: EVERFINE GO-2000B_V1 SYSTEM V2.0.362
Humidity: 58%
Test Distance: 5.850m [K=1.0000]
Remarks:

LUMINAIRE PHOTOMETRIC TEST REPORT

| | | |
|---|---------------------|-------------|
| Test:U:35.90V I:0.7000A P:25.13W PF:1.000 Freq:0Hz Lamp Flux:2085.79x1 lm | | |
| NAME: T150-25W-TW-965-60 | TYPE:Downlight | SERIAL No.: |
| SPEC.:6500K | DIM.: φ160mm*H100mm | |
| MFR.: NEKO LIGHTING AG | | |

| DATA OF LAMP | | PHOTOMETRIC DATA Eff: 83.00 lm/W | | | |
|------------------|-----------------|----------------------------------|--------|--------------------|----------|
| MODEL | BRIDGELUX-6500K | I _{max} (cd) | 2190 | S/MH(C0/180) | 0.96 |
| NOMINAL POWER(W) | 25 | LOR(%) | 100.0 | S/MH(C90/270) | 0.92 |
| RATED VOLTAGE(V) | 36 | TOTAL FLUX(lm) | 2085.8 | η UP, DN(C0-180) | 0.0,52.2 |
| NOMINAL FLUX(lm) | 2085.79 | CIE CLASS | DIRECT | η UP, DN(C180-360) | 0.0,47.8 |
| LAMPS INSIDE | 1 | η up(%) | 0.0 | CIBSE SHR NOM | 1.00 |
| TEST VOLTAGE(V) | 35.9 | η down(%) | 100.0 | CIBSE SHR MAX | 1.00 |



C Range: 0 - 360DEG
 C Interval: 15.0DEG
 Test Speed: HIGH
 Temperature:25.3DEG
 Operators:Jason
 Test Date:2020-08-29

γ Range: 0 - 90DEG
 γ Interval: 0.5DEG
 Test System:EVERFINE GO-2000B_V1 SYSTEM V2.0.362
 Humidity:58%
 Test Distance:5.850m [K=1.0000]
 Remarks:

ZONAL FLUX DIAGRAM

ZONAL FLUX DIAGRAM:

| γ | C0 | C45 | C90 | C135 | C180 | C225 | C270 | C315 | γ | Φ zone | Φ total | %lum,lamp |
|----------|-----------------------|--------|--------|--------|--------|--------|--------|--------|----------|-------------|--------------|-----------|
| 10 | 2098 | 2158 | 2156 | 2111 | 2090 | 2035 | 2032 | 2061 | 0- 10 | 202.7 | 202.7 | 9.72,9.72 |
| 20 | 1826 | 1877 | 1896 | 1885 | 1850 | 1783 | 1768 | 1791 | 10- 20 | 557.7 | 760.4 | 36.5,36.5 |
| 30 | 1280 | 1369 | 1395 | 1390 | 1340 | 1259 | 1215 | 1213 | 20- 30 | 730.2 | 1491 | 71.5,71.5 |
| 40 | 168.1 | 253.6 | 281.9 | 235.4 | 205.9 | 178.1 | 156.5 | 139.4 | 30- 40 | 460.1 | 1951 | 93.5,93.5 |
| 50 | 62.82 | 67.69 | 70.55 | 69.66 | 66.83 | 67.18 | 62.63 | 57.14 | 40- 50 | 81.99 | 2033 | 97.5,97.5 |
| 60 | 17.49 | 20.77 | 22.52 | 21.84 | 19.92 | 20.44 | 19.61 | 16.81 | 50- 60 | 36.16 | 2069 | 99.2,99.2 |
| 70 | 6.789 | 7.748 | 8.573 | 8.138 | 7.418 | 8.097 | 7.884 | 6.392 | 60- 70 | 12.67 | 2082 | 99.8,99.8 |
| 80 | 0.5283 | 0.7509 | 1.052 | 1.235 | 0.7709 | 0.6985 | 0.4594 | 0.2691 | 70- 80 | 4.017 | 2086 | 100,100 |
| 90 | 0.1354 | 0.1333 | 0.1311 | 0.1335 | 0.0786 | 0.0787 | 0.0787 | 0.0788 | 80- 90 | 0.2037 | 2086 | 100,100 |
| 100 | | | | | | | | | 90-100 | | | |
| 110 | | | | | | | | | 100-110 | | | |
| 120 | | | | | | | | | 110-120 | | | |
| 130 | | | | | | | | | 120-130 | | | |
| 140 | | | | | | | | | 130-140 | | | |
| 150 | | | | | | | | | 140-150 | | | |
| 160 | | | | | | | | | 150-160 | | | |
| 170 | | | | | | | | | 160-170 | | | |
| 180 | | | | | | | | | 170-180 | | | |
| DEG | LUMINOUS INTENSITY:cd | | | | | | | | | UNIT:lm | | |

Conical surface Flux(90deg): 1999.7 lm

%lum = 95.9%
%lamp = 95.9%

Conical surface Flux(120deg): 2068.9 lm

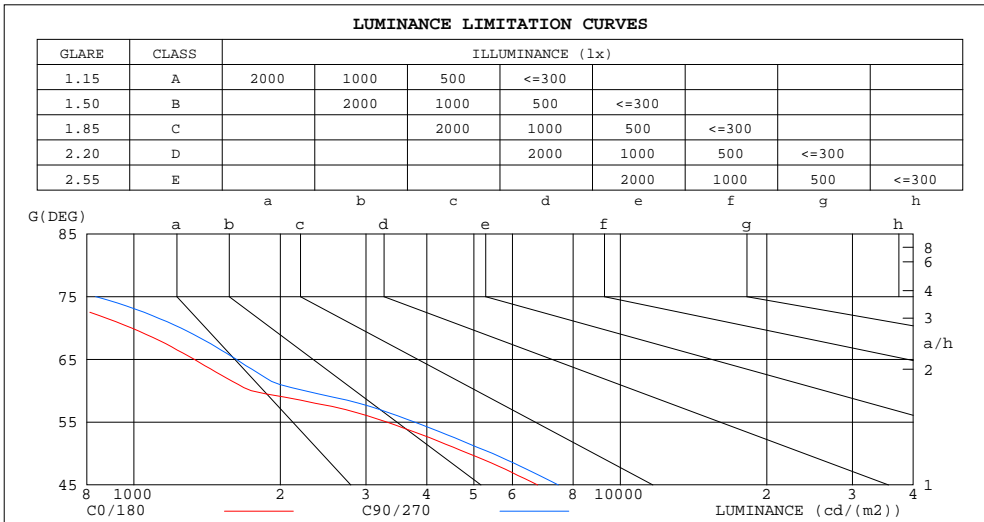
%lum = 99.2%
%lamp = 99.2%

C Range: 0 - 360DEG
C Interval: 15.0DEG
Test Speed: HIGH
Temperature:25.3DEG
Operators:Jason
Test Date:2020-08-29

γ Range: 0 - 90DEG
 γ Interval: 0.5DEG
Test System:EVERFINE GO-2000B_V1 SYSTEM V2.0.362
Humidity:58%
Test Distance:5.850m [K=1.0000]
Remarks:

LUMINANCE LIMITATION CURVES

| | | |
|---|---------------------|-------------|
| Test:U:35.90V I:0.7000A P:25.13W PF:1.000 Freq:0Hz Lamp Flux:2085.79x1 lm | | |
| NAME: T150-25W-TW-965-60 | TYPE:Downlight | SERIAL No.: |
| SPEC.:6500K | DIM.: φ160mm*H100mm | |
| MFR.: NEKO LIGHTING AG | | |



| LUMINANCE cd/(m2) | | |
|-------------------|--------|---------|
| G(DEG) | C0/180 | C90/270 |
| 85 | 81 | 92 |
| 80 | 152 | 302 |
| 75 | 615 | 834 |
| 70 | 989 | 1248 |
| 65 | 1331 | 1624 |
| 60 | 1743 | 2243 |
| 55 | 3311 | 3774 |
| 50 | 4869 | 5465 |
| 45 | 6759 | 7455 |

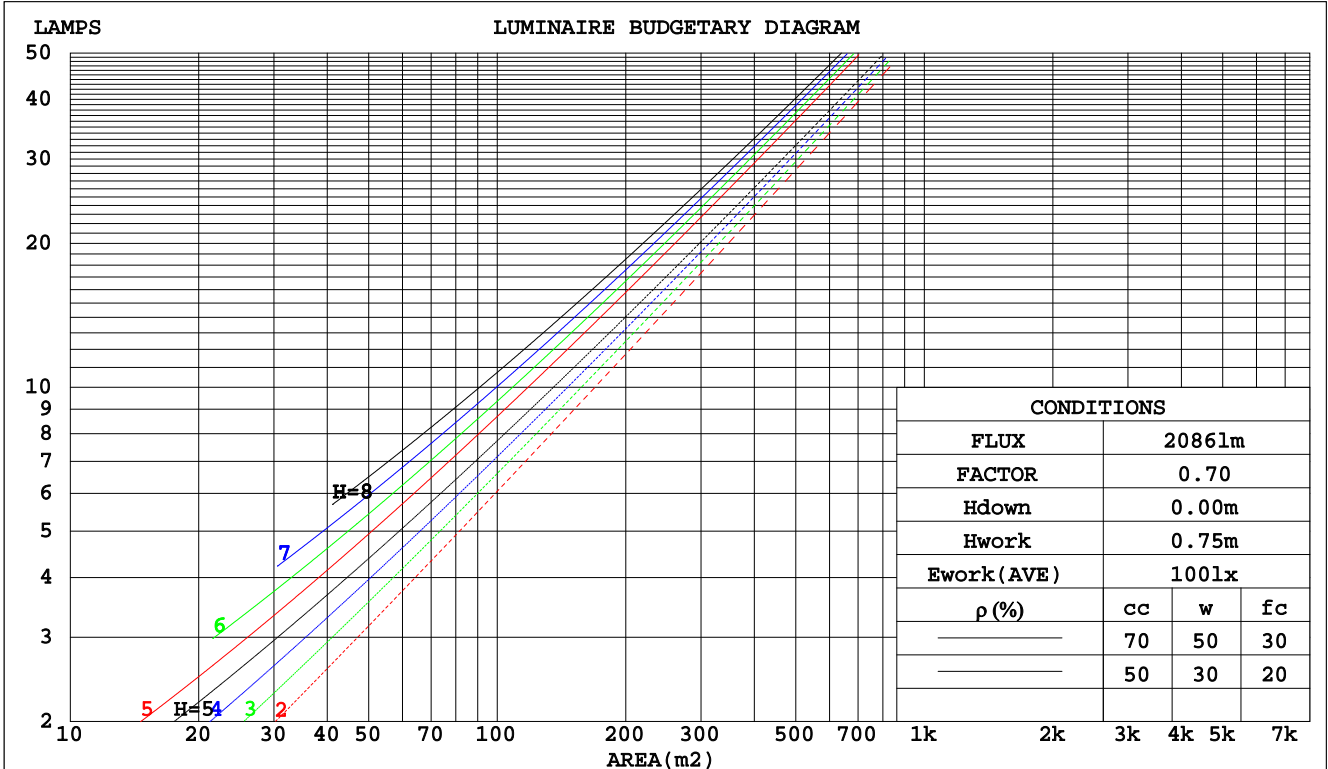
C Range: 0 - 360DEG
 C Interval: 15.0DEG
 Test Speed: HIGH
 Temperature:25.3DEG
 Operators:Jason
 Test Date:2020-08-29

γ Range: 0 - 90DEG
 γ Interval: 0.5DEG
 Test System:EVERFINE GO-2000B_V1 SYSTEM V2.0.362
 Humidity:58%
 Test Distance:5.850m [K=1.0000]
 Remarks:

CU AND LUMINAIRE BUDGETARY ESTIMATE DIAGRAM

| | | |
|---|---------------------|-------------|
| Test:U:35.90V I:0.7000A P:25.13W PF:1.000 Freq:0Hz Lamp Flux:2085.79x1 lm | | |
| NAME: T150-25W-TW-965-60 | TYPE:Downlight | SERIAL No.: |
| SPEC.:6500K | DIM.: φ160mm*H100mm | |
| MFR.: NEKO LIGHTING AG | | |

| ρcc | 80% | | | 70% | | | 50% | | | 30% | | | 10% | | | 0 |
|------|---------------------------------|------|------|------|------|------|------|------|------|------|------|------|------|------|------|------|
| ρw | 50% | 30% | 10% | 50% | 30% | 10% | 50% | 30% | 10% | 50% | 30% | 10% | 50% | 30% | 10% | 0 |
| ρfc | 20% | | | 20% | | | 20% | | | 20% | | | 20% | | | 0 |
| RCR | RCR:Room Cavity Ratio | | | | | | | | | | | | | | | |
| | Coefficients of Utilization(CU) | | | | | | | | | | | | | | | |
| 0.0 | 1.19 | 1.19 | 1.19 | 1.16 | 1.16 | 1.16 | 1.11 | 1.11 | 1.11 | 1.06 | 1.06 | 1.06 | 1.02 | 1.02 | 1.02 | 1.00 |
| 1.0 | 1.11 | 1.08 | 1.06 | 1.09 | 1.06 | 1.04 | 1.04 | 1.03 | 1.01 | 1.01 | .99 | .98 | .97 | .96 | .95 | .93 |
| 2.0 | 1.03 | .99 | .95 | 1.01 | .97 | .94 | .98 | .95 | .92 | .95 | .92 | .90 | .92 | .90 | .88 | .87 |
| 3.0 | .96 | .91 | .87 | .94 | .90 | .86 | .92 | .88 | .85 | .89 | .86 | .83 | .87 | .84 | .82 | .81 |
| 4.0 | .89 | .84 | .80 | .88 | .83 | .79 | .86 | .82 | .78 | .84 | .80 | .77 | .82 | .79 | .76 | .75 |
| 5.0 | .84 | .78 | .73 | .83 | .77 | .73 | .81 | .76 | .72 | .79 | .75 | .72 | .78 | .74 | .71 | .70 |
| 6.0 | .78 | .72 | .68 | .78 | .72 | .68 | .76 | .71 | .67 | .75 | .70 | .67 | .73 | .70 | .67 | .65 |
| 7.0 | .74 | .68 | .63 | .73 | .67 | .63 | .72 | .67 | .63 | .71 | .66 | .63 | .69 | .65 | .62 | .61 |
| 8.0 | .69 | .63 | .59 | .69 | .63 | .59 | .68 | .63 | .59 | .67 | .62 | .59 | .66 | .61 | .58 | .57 |
| 9.0 | .65 | .59 | .55 | .65 | .59 | .55 | .64 | .59 | .55 | .63 | .58 | .55 | .62 | .58 | .55 | .53 |
| 10.0 | .62 | .56 | .52 | .61 | .56 | .52 | .61 | .55 | .52 | .60 | .55 | .52 | .59 | .55 | .52 | .50 |



C Range: 0 - 360DEG
 C Interval: 15.0DEG
 Test Speed: HIGH
 Temperature: 25.3DEG
 Operators: Jason
 Test Date: 2020-08-29

γ Range: 0 - 90DEG
 γ Interval: 0.5DEG
 Test System: EVERFINE GO-2000B_V1 SYSTEM V2.0.362
 Humidity: 58%
 Test Distance: 5.850m [K=1.0000]
 Remarks:

WEC AND CCEC

| | | |
|---|---------------------|-------------|
| Test:U:35.90V I:0.7000A P:25.13W PF:1.000 Freq:0Hz Lamp Flux:2085.79x1 lm | | |
| NAME: T150-25W-TW-965-60 | TYPE:Downlight | SERIAL No.: |
| SPEC.:6500K | DIM.: φ160mm*H100mm | |
| MFR.: NEKO LIGHTING AG | | |

| ρcc | 80% | | | 70% | | | 50% | | | 30% | | | 10% | | | 0 |
|------|-----------------------|------|------|------|------|------|---------------------------------|------|------|------|------|------|------|------|------|---|
| ρw | 50% | 30% | 10% | 50% | 30% | 10% | 50% | 30% | 10% | 50% | 30% | 10% | 50% | 30% | 10% | 0 |
| ρfc | 20% | | | 20% | | | 20% | | | 20% | | | 20% | | | 0 |
| RCR | RCR:Room Cavity Ratio | | | | | | Wall Exitance Coefficients(WEC) | | | | | | | | | |
| 0.0 | | | | | | | | | | | | | | | | |
| 1.0 | .180 | .102 | .032 | .173 | .099 | .031 | .160 | .092 | .029 | .149 | .086 | .028 | .138 | .080 | .026 | |
| 2.0 | .172 | .094 | .029 | .167 | .092 | .028 | .156 | .087 | .027 | .146 | .082 | .026 | .137 | .078 | .024 | |
| 3.0 | .164 | .088 | .026 | .160 | .085 | .026 | .151 | .082 | .025 | .142 | .078 | .024 | .134 | .074 | .023 | |
| 4.0 | .157 | .081 | .024 | .153 | .080 | .024 | .145 | .077 | .023 | .137 | .074 | .022 | .131 | .071 | .022 | |
| 5.0 | .150 | .076 | .022 | .146 | .075 | .022 | .139 | .072 | .021 | .133 | .070 | .021 | .127 | .068 | .020 | |
| 6.0 | .143 | .072 | .020 | .140 | .071 | .020 | .134 | .068 | .020 | .128 | .066 | .020 | .123 | .065 | .019 | |
| 7.0 | .137 | .068 | .019 | .134 | .067 | .019 | .128 | .065 | .019 | .123 | .063 | .018 | .119 | .062 | .018 | |
| 8.0 | .131 | .064 | .018 | .128 | .063 | .018 | .123 | .062 | .018 | .119 | .060 | .017 | .115 | .059 | .017 | |
| 9.0 | .125 | .061 | .017 | .123 | .060 | .017 | .119 | .059 | .017 | .115 | .058 | .016 | .111 | .056 | .016 | |
| 10.0 | .120 | .058 | .016 | .118 | .057 | .016 | .114 | .056 | .016 | .111 | .055 | .016 | .107 | .054 | .015 | |

| ρcc | 80% | | | 70% | | | 50% | | | 30% | | | 10% | | | 0 |
|------|-----------------------|------|------|------|------|------|--|------|------|------|------|------|------|------|------|---|
| ρw | 50% | 30% | 10% | 50% | 30% | 10% | 50% | 30% | 10% | 50% | 30% | 10% | 50% | 30% | 10% | 0 |
| ρfc | 20% | | | 20% | | | 20% | | | 20% | | | 20% | | | 0 |
| RCR | RCR:Room Cavity Ratio | | | | | | Ceiling Cavity Exitance Coefficients(CCEC) | | | | | | | | | |
| 0.0 | .190 | .190 | .190 | .163 | .163 | .163 | .111 | .111 | .111 | .064 | .064 | .064 | .020 | .020 | .020 | |
| 1.0 | .171 | .157 | .145 | .147 | .135 | .125 | .100 | .093 | .086 | .058 | .054 | .050 | .018 | .017 | .016 | |
| 2.0 | .156 | .132 | .112 | .134 | .114 | .097 | .092 | .079 | .068 | .053 | .046 | .040 | .017 | .015 | .013 | |
| 3.0 | .144 | .114 | .089 | .124 | .098 | .077 | .085 | .068 | .054 | .049 | .040 | .032 | .016 | .013 | .010 | |
| 4.0 | .134 | .099 | .072 | .115 | .085 | .063 | .079 | .060 | .044 | .046 | .035 | .026 | .015 | .011 | .009 | |
| 5.0 | .126 | .087 | .059 | .108 | .076 | .051 | .074 | .053 | .036 | .043 | .031 | .022 | .014 | .010 | .007 | |
| 6.0 | .118 | .078 | .049 | .102 | .068 | .043 | .070 | .047 | .030 | .041 | .028 | .018 | .013 | .009 | .006 | |
| 7.0 | .112 | .071 | .042 | .096 | .061 | .036 | .067 | .043 | .026 | .039 | .025 | .015 | .012 | .008 | .005 | |
| 8.0 | .106 | .064 | .036 | .092 | .056 | .031 | .063 | .039 | .022 | .037 | .023 | .013 | .012 | .008 | .004 | |
| 9.0 | .101 | .059 | .031 | .087 | .051 | .027 | .060 | .036 | .019 | .035 | .021 | .011 | .011 | .007 | .004 | |
| 10.0 | .097 | .055 | .027 | .083 | .048 | .024 | .058 | .034 | .017 | .034 | .020 | .010 | .011 | .007 | .003 | |

C Range: 0 - 360DEG
 C Interval: 15.0DEG
 Test Speed: HIGH
 Temperature:25.3DEG
 Operators:Jason
 Test Date:2020-08-29

γ Range: 0 - 90DEG
 γ Interval: 0.5DEG
 Test System:EVERFINE GO-2000B_V1 SYSTEM V2.0.362
 Humidity:58%
 Test Distance:5.850m [K=1.0000]
 Remarks:

UGR(Unified Glare Rating) Table

| | | |
|---|---------------------|-------------|
| Test:U:35.90V I:0.7000A P:25.13W PF:1.000 Freq:0Hz Lamp Flux:2085.79x1 lm | | |
| NAME: T150-25W-TW-965-60 | TYPE:Downlight | SERIAL No.: |
| SPEC.:6500K | DIM.: φ160mm*H100mm | |
| MFR.: NEKO LIGHTING AG | | |

| | | | | | | | | | | |
|--|------------------|------|------|------|------|----------------|------|------|------|------|
| ceiling/cavity | 0.7 | 0.7 | 0.5 | 0.5 | 0.3 | 0.7 | 0.7 | 0.5 | 0.5 | 0.3 |
| walls | 0.5 | 0.3 | 0.5 | 0.3 | 0.3 | 0.5 | 0.3 | 0.5 | 0.3 | 0.3 |
| working plane | 0.2 | 0.2 | 0.2 | 0.2 | 0.2 | 0.2 | 0.2 | 0.2 | 0.2 | 0.2 |
| Room dimensions | Viewed crosswise | | | | | Viewed endwise | | | | |
| x = 2H y = 2H | 14.6 | 15.6 | 14.8 | 15.7 | 15.9 | 15.4 | 16.3 | 15.6 | 16.5 | 16.7 |
| 3H | 14.5 | 15.3 | 14.7 | 15.5 | 15.7 | 15.2 | 16.1 | 15.5 | 16.3 | 16.5 |
| 4H | 14.4 | 15.2 | 14.6 | 15.4 | 15.7 | 15.2 | 16.0 | 15.4 | 16.2 | 16.5 |
| 6H | 14.3 | 15.1 | 14.6 | 15.3 | 15.6 | 15.1 | 15.9 | 15.4 | 16.1 | 16.4 |
| 8H | 14.2 | 15.0 | 14.5 | 15.2 | 15.5 | 15.0 | 15.8 | 15.3 | 16.0 | 16.3 |
| 12H | 14.2 | 14.9 | 14.5 | 15.2 | 15.5 | 15.0 | 15.7 | 15.3 | 16.0 | 16.3 |
| 4H 2H | 14.4 | 15.2 | 14.6 | 15.4 | 15.7 | 15.2 | 16.0 | 15.4 | 16.2 | 16.4 |
| 3H | 14.2 | 15.0 | 14.6 | 15.2 | 15.5 | 15.0 | 15.7 | 15.3 | 16.0 | 16.3 |
| 4H | 14.2 | 14.8 | 14.5 | 15.1 | 15.4 | 14.9 | 15.6 | 15.3 | 15.9 | 16.2 |
| 6H | 14.1 | 14.6 | 14.4 | 15.0 | 15.3 | 14.9 | 15.4 | 15.2 | 15.8 | 16.1 |
| 8H | 14.0 | 14.5 | 14.4 | 14.9 | 15.3 | 14.8 | 15.3 | 15.2 | 15.7 | 16.1 |
| 12H | 14.0 | 14.4 | 14.4 | 14.8 | 15.2 | 14.8 | 15.2 | 15.2 | 15.6 | 16.0 |
| 8H 4H | 14.0 | 14.5 | 14.4 | 14.9 | 15.3 | 14.8 | 15.3 | 15.2 | 15.7 | 16.1 |
| 6H | 13.9 | 14.4 | 14.3 | 14.7 | 15.2 | 14.7 | 15.1 | 15.1 | 15.5 | 16.0 |
| 8H | 13.9 | 14.2 | 14.3 | 14.7 | 15.1 | 14.7 | 15.0 | 15.1 | 15.5 | 15.9 |
| 12H | 13.8 | 14.1 | 14.3 | 14.6 | 15.0 | 14.6 | 14.9 | 15.1 | 15.4 | 15.8 |
| 12H 4H | 14.0 | 14.4 | 14.4 | 14.8 | 15.2 | 14.8 | 15.2 | 15.2 | 15.6 | 16.0 |
| 6H | 13.9 | 14.2 | 14.3 | 14.7 | 15.1 | 14.7 | 15.0 | 15.1 | 15.5 | 15.9 |
| 8H | 13.8 | 14.1 | 14.3 | 14.6 | 15.1 | 14.6 | 14.9 | 15.1 | 15.4 | 15.8 |
| Variations with the observer position at spacings: | | | | | | | | | | |
| S = 1.0H | + 3.4 / - 6.7 | | | | | + 4.0 / - 7.9 | | | | |
| 1.5H | + 5.4 / - 4.6 | | | | | + 6.2 / - 5.8 | | | | |
| 2.0H | + 3.4 / - 4.2 | | | | | + 3.3 / - 4.1 | | | | |

CIE Pub.117, 2086 lm Total Lamp Luminous Flux Correct (8log(F/F0) = 2.6)

C Range: 0 - 360DEG
 C Interval: 15.0DEG
 Test Speed: HIGH
 Temperature:25.3DEG
 Operators:Jason
 Test Date:2020-08-29

γ Range: 0 - 90DEG
 γ Interval: 0.5DEG
 Test System:EVERFINE GO-2000B_V1 SYSTEM V2.0.362
 Humidity:58%
 Test Distance:5.850m [K=1.0000]
 Remarks:

UTILIZATION FACTORS TABLE

| | | |
|---|---------------------|-------------|
| Test:U:35.90V I:0.7000A P:25.13W PF:1.000 Freq:0Hz Lamp Flux:2085.79x1 lm | | |
| NAME: T150-25W-TW-965-60 | TYPE:Downlight | SERIAL No.: |
| SPEC.:6500K | DIM.: φ160mm*H100mm | |
| MFR.: NEKO LIGHTING AG | | |

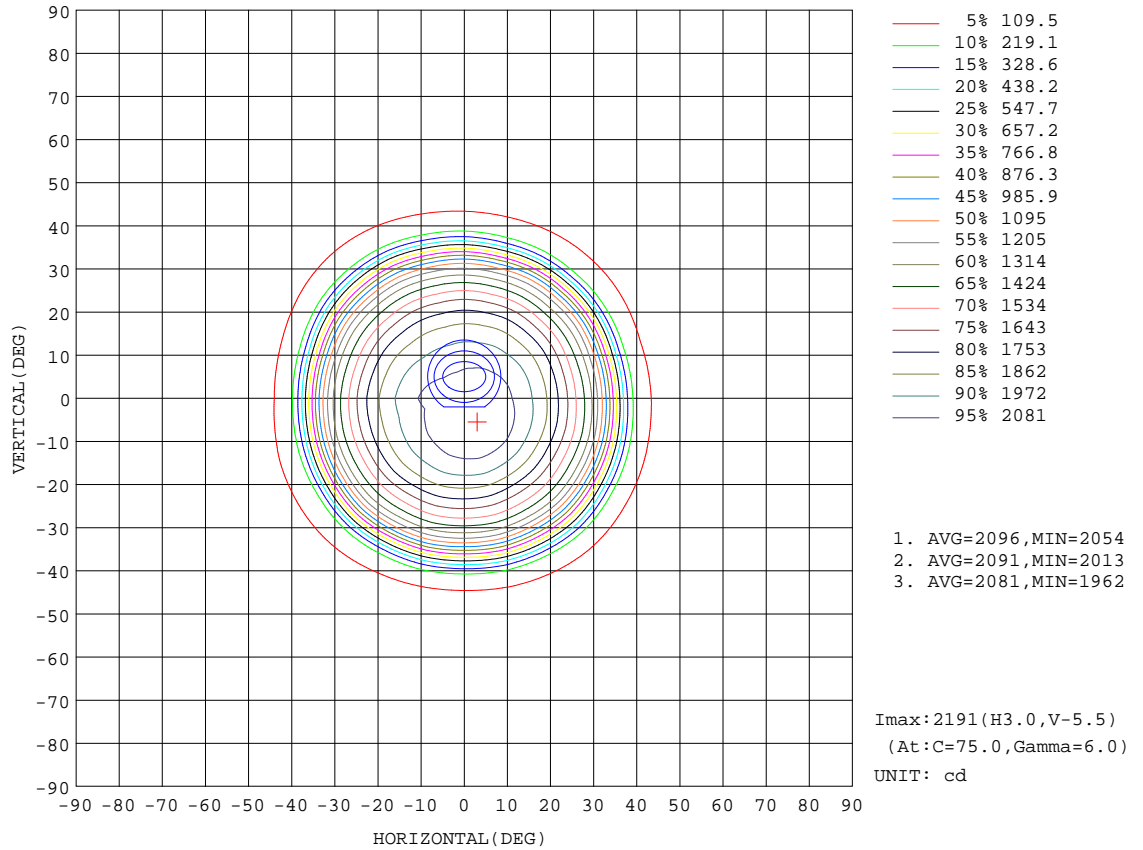
| REFLECTANCE | | | | | | | | | | |
|----------------------------------|---|-----|-----------|-----|-----|-----|---------------|-----|-----|--------|
| Ceiling | 0.8 | 0.8 | 0.8 | 0.7 | 0.7 | 0.7 | 0.5 | 0.5 | 0.5 | 0 |
| Walls | 0.7 | 0.5 | 0.3 | 0.7 | 0.5 | 0.3 | 0.7 | 0.5 | 0.3 | 0 |
| Working plane | 0.2 | 0.2 | 0.2 | 0.2 | 0.2 | 0.2 | 0.2 | 0.2 | 0.2 | 0 |
| ROOM INDEX | UTILIZATION FACTORS(PERCENT) $k(RI) \times RCR = 5$ | | | | | | | | | |
| k = 0.60 | 87 | 81 | 77 | 87 | 81 | 77 | 86 | 81 | 77 | 74 |
| 0.80 | 95 | 89 | 85 | 94 | 89 | 85 | 93 | 88 | 85 | 81 |
| 1.00 | 99 | 94 | 90 | 98 | 93 | 90 | 97 | 93 | 89 | 85 |
| 1.25 | 103 | 98 | 95 | 102 | 98 | 94 | 100 | 96 | 94 | 89 |
| 1.50 | 106 | 101 | 98 | 105 | 101 | 98 | 103 | 99 | 96 | 92 |
| 2.00 | 109 | 105 | 101 | 107 | 103 | 101 | 105 | 102 | 99 | 94 |
| 2.50 | 110 | 107 | 104 | 109 | 105 | 103 | 106 | 103 | 101 | 95 |
| 3.00 | 112 | 108 | 106 | 110 | 107 | 105 | 107 | 104 | 103 | 96 |
| 4.00 | 114 | 111 | 109 | 112 | 110 | 108 | 108 | 106 | 105 | 98 |
| 5.00 | 115 | 113 | 111 | 113 | 111 | 109 | 109 | 108 | 106 | 99 |
| ROOM INDEX | UF(total) | | | | | | | | | Direct |
| According to DIN EN 13032-2 2004 | | | Suspended | | | | SHRNOM = 1.25 | | | |

C Range: 0 - 360DEG
 C Interval: 15.0DEG
 Test Speed: HIGH
 Temperature:25.3DEG
 Operators:Jason
 Test Date:2020-08-29

γ Range: 0 - 90DEG
 γ Interval: 0.5DEG
 Test System:EVERFINE GO-2000B_V1 SYSTEM V2.0.362
 Humidity:58%
 Test Distance:5.850m [K=1.0000]
 Remarks:

ISOCANDELA DIAGRAM

| | | |
|---|---------------------|-------------|
| Test:U:35.90V I:0.7000A P:25.13W PF:1.000 Freq:0Hz Lamp Flux:2085.79x1 lm | | |
| NAME: T150-25W-TW-965-60 | TYPE:Downlight | SERIAL No.: |
| SPEC.:6500K | DIM.: φ160mm*H100mm | |
| MFR.: NEKO LIGHTING AG | | |



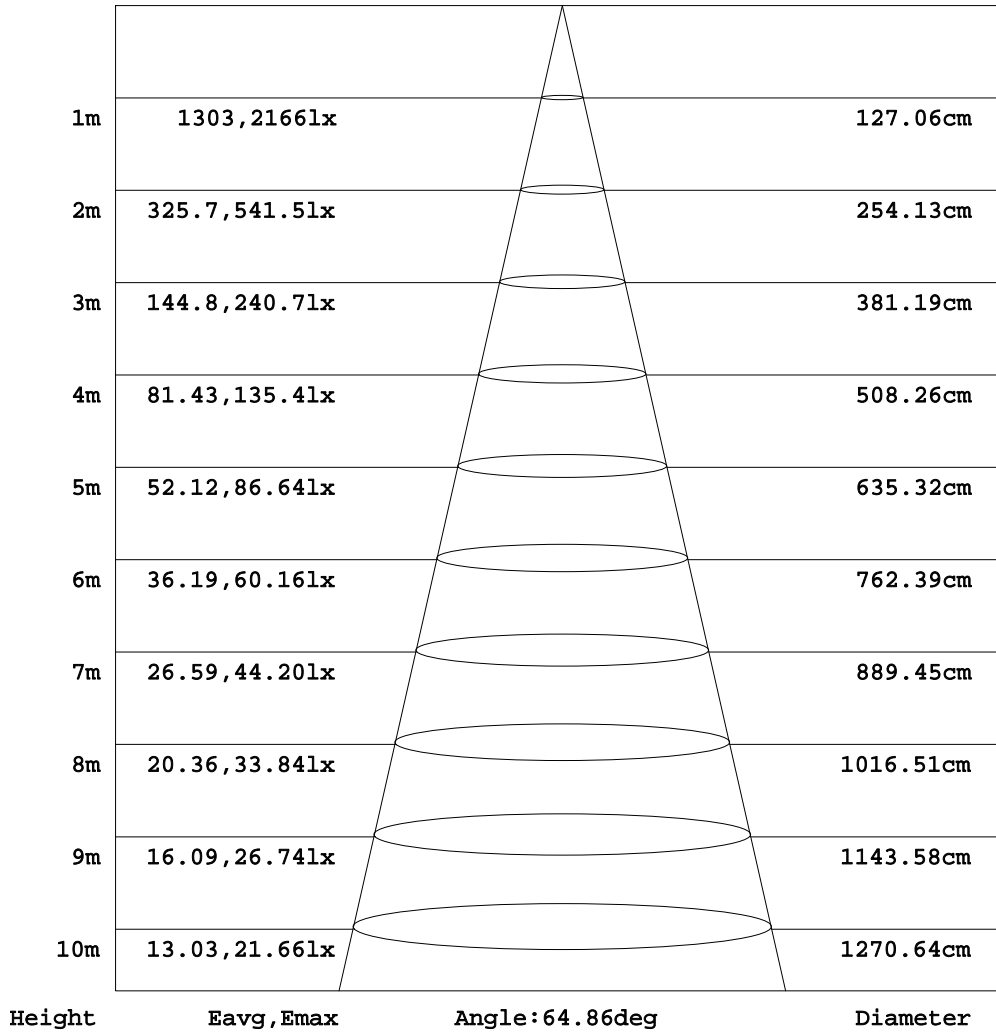
C Range: 0 - 360DEG
 C Interval: 15.0DEG
 Test Speed: HIGH
 Temperature: 25.3DEG
 Operators: Jason
 Test Date: 2020-08-29

γ Range: 0 - 90DEG
 γ Interval: 0.5DEG
 Test System: EVERFINE GO-2000B_V1 SYSTEM V2.0.362
 Humidity: 58%
 Test Distance: 5.850m [K=1.0000]
 Remarks:

AAI Figure

| | | |
|---|---------------------|-------------|
| Test:U:35.90V I:0.7000A P:25.13W PF:1.000 Freq:0Hz Lamp Flux:2085.79x1 lm | | |
| NAME: T150-25W-TW-965-60 | TYPE:Downlight | SERIAL No.: |
| SPEC.:6500K | DIM.: φ160mm*H100mm | |
| MFR.: NEKO LIGHTING AG | | |

Flux out:1661 lm



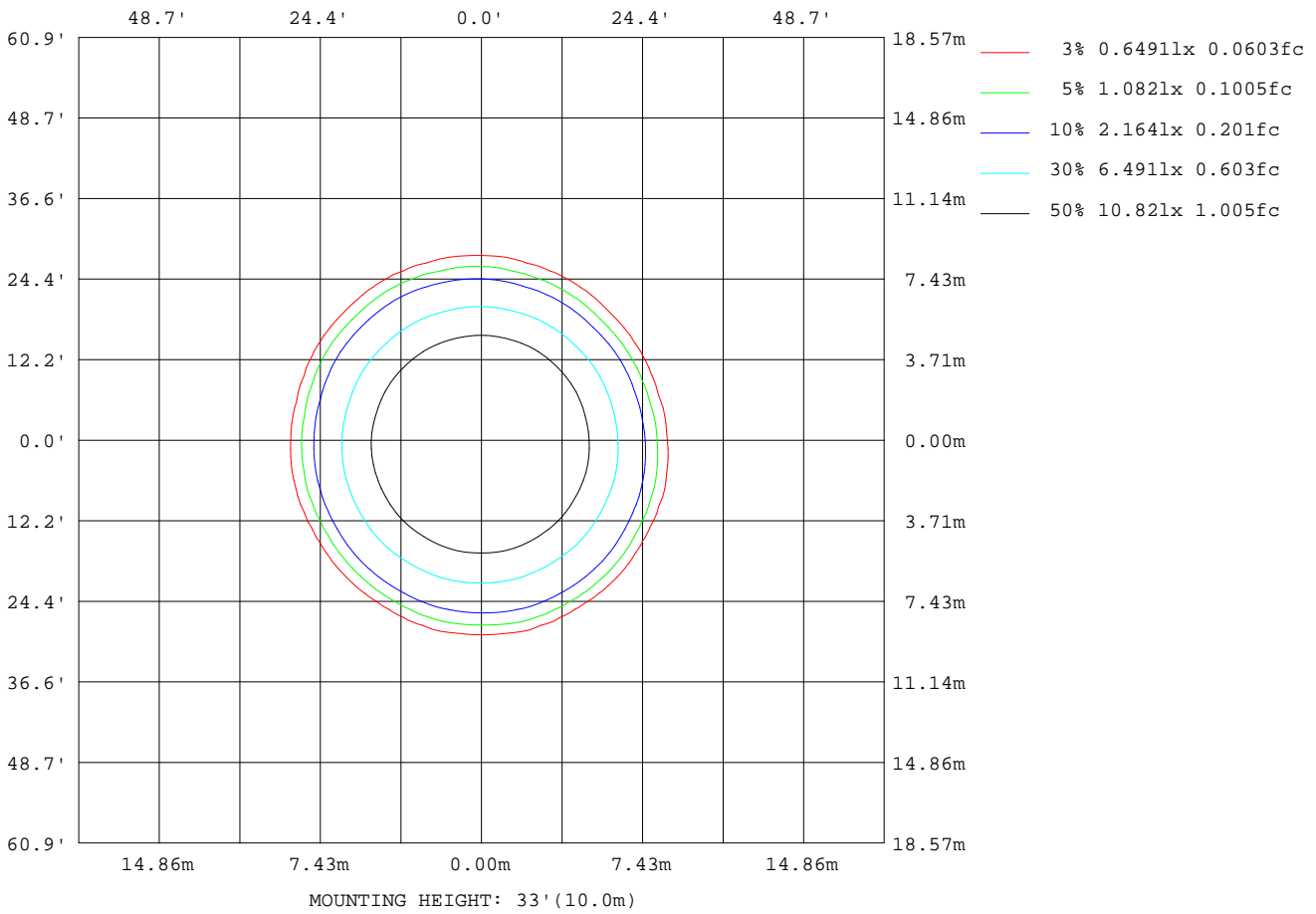
Note:The Curves indicate the illuminated area and the average illumination when the luminaire is at different distance.

C Range: 0 - 360DEG
C Interval: 15.0DEG
Test Speed: HIGH
Temperature:25.3DEG
Operators:Jason
Test Date:2020-08-29

γ Range: 0 - 90DEG
γ Interval: 0.5DEG
Test System:EVERFINE GO-2000B_V1 SYSTEM V2.0.362
Humidity:58%
Test Distance:5.850m [K=1.0000]
Remarks:

ISOLUX DIAGRAM

| | | |
|---|---------------------|-------------|
| Test:U:35.90V I:0.7000A P:25.13W PF:1.000 Freq:0Hz Lamp Flux:2085.79x1 lm | | |
| NAME: T150-25W-TW-965-60 | TYPE:Downlight | SERIAL No.: |
| SPEC.:6500K | DIM.: φ160mm*H100mm | |
| MFR.: NEKO LIGHTING AG | | |



C Range: 0 - 360DEG
 C Interval: 15.0DEG
 Test Speed: HIGH
 Temperature:25.3DEG
 Operators:Jason
 Test Date:2020-08-29

γ Range: 0 - 90DEG
 γ Interval: 0.5DEG
 Test System:EVERFINE GO-2000B_V1 SYSTEM V2.0.362
 Humidity:58%
 Test Distance:5.850m [K=1.0000]
 Remarks:

LED Avg.L Report

| | | |
|---|---------------------|-------------|
| Test:U:35.90V I:0.7000A P:25.13W PF:1.000 Freq:0Hz Lamp Flux:2085.79x1 lm | | |
| NAME: T150-25W-TW-965-60 | TYPE:Downlight | SERIAL No.: |
| SPEC.:6500K | DIM.: φ160mm*H100mm | |
| MFR.: NEKO LIGHTING AG | | |

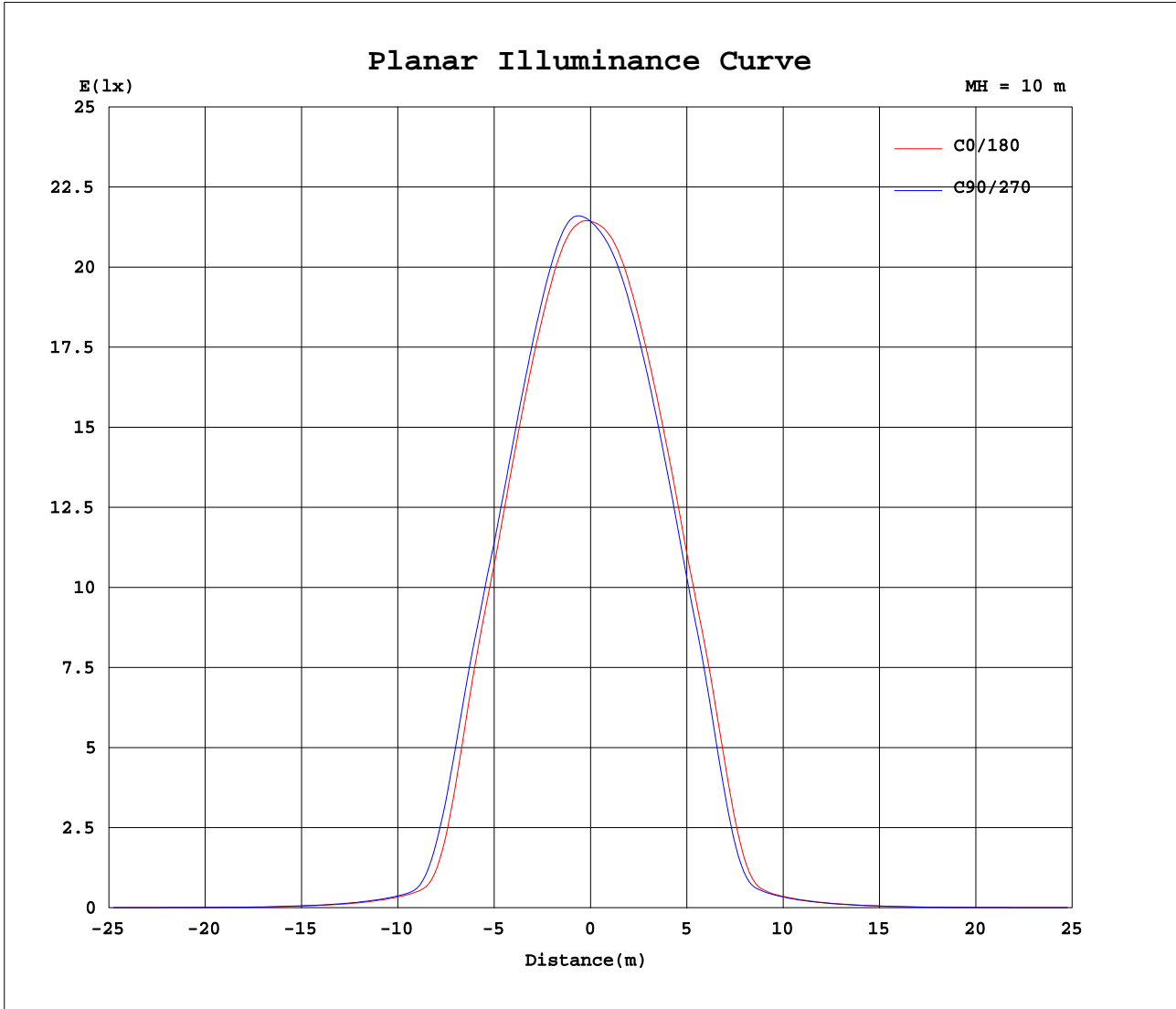
| AvgL | cd/m2 |
|----------------|-------|
| L_0~180(65)av | 1377 |
| L_0~180(75)av | 659 |
| L_0~180(85)av | 70 |
| L_90~270(65)av | 1579 |
| L_90~270(75)av | 758 |
| L_90~270(85)av | 72 |
| L_45(65)av | 1468 |
| L_45(75)av | 696 |
| L_45(85)av | 73 |

Standard: GB/T 29293-2012

C Range: 0 - 360DEG
C Interval: 15.0DEG
Test Speed: HIGH
Temperature:25.3DEG
Operators:Jason
Test Date:2020-08-29

γ Range: 0 - 90DEG
γ Interval: 0.5DEG
Test System:EVERFINE GO-2000B_V1 SYSTEM V2.0.362
Humidity:58%
Test Distance:5.850m [K=1.0000]
Remarks:

Planar Illuminance Curve



C Range: 0 - 360DEG
 C Interval: 15.0DEG
 Test Speed: HIGH
 Temperature: 25.3DEG
 Operators: Jason
 Test Date: 2020-08-29

γ Range: 0 - 90DEG
 γ Interval: 0.5DEG
 Test System: EVERFINE GO-2000B_V1 SYSTEM V2.0.362
 Humidity: 58%
 Test Distance: 5.850m [K=1.0000]
 Remarks:

LUMINOUS DISTRIBUTION INTENSITY DATA

| | | |
|---|---------------------|-------------|
| Test:U:35.90V I:0.7000A P:25.13W PF:1.000 Freq:0Hz Lamp Flux:2085.79x1 lm | | |
| NAME: T150-25W-TW-965-60 | TYPE:Downlight | SERIAL No.: |
| SPEC.:6500K | DIM.: φ160mm*H100mm | |
| MFR.: NEKO LIGHTING AG | | |

Table--1

UNIT: cd

| C(DEG) γ (DEG) | 0 | 15 | 30 | 45 | 60 | 75 | 90 | 105 | 120 | 135 | 150 | 165 | 180 | 195 | 210 | 225 | 240 | 255 | 270 |
|-------------------|------|------|------|------|------|------|------|------|------|------|------|------|------|------|------|------|------|------|------|
| 0 | 2141 | 2141 | 2141 | 2141 | 2141 | 2141 | 2141 | 2141 | 2141 | 2141 | 2141 | 2141 | 2141 | 2141 | 2141 | 2141 | 2141 | 2141 | 2141 |
| 5 | 2146 | 2158 | 2174 | 2182 | 2186 | 2186 | 2180 | 2171 | 2158 | 2145 | 2132 | 2119 | 2131 | 2120 | 2106 | 2098 | 2095 | 2095 | 2099 |
| 10 | 2098 | 2119 | 2139 | 2158 | 2163 | 2166 | 2156 | 2145 | 2126 | 2111 | 2093 | 2078 | 2090 | 2071 | 2052 | 2035 | 2028 | 2026 | 2032 |
| 15 | 1989 | 2011 | 2028 | 2048 | 2054 | 2063 | 2055 | 2050 | 2032 | 2022 | 2005 | 1991 | 1994 | 1974 | 1954 | 1933 | 1924 | 1919 | 1925 |
| 20 | 1826 | 1847 | 1858 | 1877 | 1884 | 1899 | 1896 | 1898 | 1888 | 1885 | 1871 | 1858 | 1850 | 1825 | 1807 | 1783 | 1773 | 1762 | 1768 |
| 25 | 1583 | 1610 | 1619 | 1642 | 1651 | 1671 | 1672 | 1680 | 1671 | 1672 | 1657 | 1647 | 1633 | 1601 | 1585 | 1559 | 1549 | 1529 | 1530 |
| 30 | 1280 | 1321 | 1337 | 1369 | 1377 | 1399 | 1395 | 1403 | 1386 | 1390 | 1373 | 1366 | 1340 | 1305 | 1291 | 1259 | 1248 | 1219 | 1215 |
| 35 | 696 | 771 | 804 | 870 | 886 | 923 | 911 | 932 | 904 | 905 | 860 | 845 | 806 | 758 | 756 | 717 | 702 | 647 | 630 |
| 40 | 168 | 198 | 213 | 254 | 268 | 294 | 282 | 281 | 248 | 235 | 214 | 219 | 206 | 193 | 194 | 178 | 173 | 160 | 157 |
| 45 | 95.9 | 98.6 | 99.0 | 103 | 105 | 107 | 106 | 106 | 104 | 105 | 106 | 107 | 101 | 100 | 102 | 102 | 101 | 98.3 | 96.0 |
| 50 | 62.8 | 64.8 | 64.8 | 67.7 | 69.6 | 71.4 | 70.5 | 70.2 | 69.1 | 69.7 | 70.0 | 71.4 | 66.8 | 65.9 | 67.2 | 67.2 | 66.8 | 64.4 | 62.6 |
| 55 | 38.1 | 39.5 | 39.1 | 41.3 | 42.5 | 44.2 | 43.5 | 43.1 | 41.8 | 42.5 | 42.6 | 44.0 | 41.0 | 40.0 | 40.9 | 40.7 | 40.9 | 39.4 | 38.1 |
| 60 | 17.5 | 18.8 | 19.0 | 20.8 | 21.8 | 23.1 | 22.5 | 22.6 | 21.6 | 21.8 | 21.7 | 22.3 | 19.9 | 19.2 | 20.2 | 20.4 | 20.9 | 20.3 | 19.6 |
| 65 | 11.3 | 11.8 | 12.0 | 12.8 | 13.4 | 14.1 | 13.8 | 13.5 | 12.9 | 12.8 | 12.7 | 12.8 | 12.1 | 12.2 | 12.8 | 13.3 | 13.8 | 13.5 | 13.0 |
| 70 | 6.79 | 7.16 | 7.18 | 7.75 | 8.16 | 8.70 | 8.57 | 8.46 | 8.12 | 8.14 | 7.97 | 8.06 | 7.42 | 7.35 | 7.81 | 8.10 | 8.40 | 8.25 | 7.88 |
| 75 | 3.20 | 3.44 | 3.39 | 3.70 | 3.92 | 4.33 | 4.34 | 4.36 | 4.25 | 4.32 | 4.22 | 4.23 | 3.66 | 3.52 | 3.68 | 3.78 | 3.93 | 3.77 | 3.54 |
| 80 | 0.53 | 0.65 | 0.61 | 0.75 | 0.82 | 1.02 | 1.05 | 1.19 | 1.16 | 1.23 | 1.16 | 1.15 | 0.77 | 0.68 | 0.74 | 0.70 | 0.66 | 0.53 | 0.46 |
| 85 | 0.14 | 0.14 | 0.15 | 0.14 | 0.16 | 0.14 | 0.16 | 0.14 | 0.17 | 0.15 | 0.17 | 0.15 | 0.10 | 0.12 | 0.10 | 0.12 | 0.10 | 0.12 | 0.09 |
| 90 | 0.14 | 0.14 | 0.14 | 0.13 | 0.14 | 0.14 | 0.13 | 0.13 | 0.13 | 0.13 | 0.14 | 0.14 | 0.08 | 0.08 | 0.08 | 0.08 | 0.08 | 0.08 | 0.08 |
| | | | | | | | | | | | | | | | | | | | |
| | | | | | | | | | | | | | | | | | | | |
| | | | | | | | | | | | | | | | | | | | |
| | | | | | | | | | | | | | | | | | | | |
| | | | | | | | | | | | | | | | | | | | |
| | | | | | | | | | | | | | | | | | | | |
| | | | | | | | | | | | | | | | | | | | |
| | | | | | | | | | | | | | | | | | | | |
| | | | | | | | | | | | | | | | | | | | |
| | | | | | | | | | | | | | | | | | | | |
| | | | | | | | | | | | | | | | | | | | |
| | | | | | | | | | | | | | | | | | | | |
| | | | | | | | | | | | | | | | | | | | |
| | | | | | | | | | | | | | | | | | | | |
| | | | | | | | | | | | | | | | | | | | |
| | | | | | | | | | | | | | | | | | | | |

C Range: 0 - 360DEG
 C Interval: 15.0DEG
 Test Speed: HIGH
 Temperature: 25.3DEG
 Operators: Jason
 Test Date: 2020-08-29

γ Range: 0 - 90DEG
 γ Interval: 0.5DEG
 Test System: EVERFINE GO-2000B_V1 SYSTEM V2.0.362
 Humidity: 58%
 Test Distance: 5.850m [K=1.0000]
 Remarks:

LUMINOUS DISTRIBUTION INTENSITY DATA

| | | |
|---|---------------------|-------------|
| Test:U:35.90V I:0.7000A P:25.13W PF:1.000 Freq:0Hz Lamp Flux:2085.79x1 lm | | |
| NAME: T150-25W-TW-965-60 | TYPE:Downlight | SERIAL No.: |
| SPEC.:6500K | DIM.: φ160mm*H100mm | |
| MFR.: NEKO LIGHTING AG | | |

Table--2

UNIT: cd

| C(DEG)\ γ (DEG) | 285 | 300 | 315 | 330 | 345 | | | | | | | | | | | | | | | | | | | |
|--------------------|------|------|------|------|------|--|--|--|--|--|--|--|--|--|--|--|--|--|--|--|--|--|--|--|
| 0 | 2141 | 2141 | 2141 | 2141 | 2141 | | | | | | | | | | | | | | | | | | | |
| 5 | 2105 | 2115 | 2125 | 2138 | 2149 | | | | | | | | | | | | | | | | | | | |
| 10 | 2038 | 2051 | 2061 | 2080 | 2096 | | | | | | | | | | | | | | | | | | | |
| 15 | 1930 | 1945 | 1954 | 1973 | 1987 | | | | | | | | | | | | | | | | | | | |
| 20 | 1770 | 1785 | 1791 | 1809 | 1818 | | | | | | | | | | | | | | | | | | | |
| 25 | 1524 | 1540 | 1541 | 1560 | 1565 | | | | | | | | | | | | | | | | | | | |
| 30 | 1198 | 1214 | 1213 | 1241 | 1250 | | | | | | | | | | | | | | | | | | | |
| 35 | 588 | 594 | 581 | 621 | 641 | | | | | | | | | | | | | | | | | | | |
| 40 | 146 | 145 | 139 | 143 | 146 | | | | | | | | | | | | | | | | | | | |
| 45 | 92.9 | 91.5 | 89.5 | 89.3 | 89.3 | | | | | | | | | | | | | | | | | | | |
| 50 | 60.0 | 59.0 | 57.1 | 57.4 | 57.6 | | | | | | | | | | | | | | | | | | | |
| 55 | 35.8 | 34.9 | 33.4 | 33.8 | 34.3 | | | | | | | | | | | | | | | | | | | |
| 60 | 18.4 | 17.7 | 16.8 | 16.6 | 16.3 | | | | | | | | | | | | | | | | | | | |
| 65 | 12.1 | 11.6 | 10.9 | 10.8 | 10.6 | | | | | | | | | | | | | | | | | | | |
| 70 | 7.28 | 6.88 | 6.39 | 6.34 | 6.22 | | | | | | | | | | | | | | | | | | | |
| 75 | 3.14 | 2.94 | 2.69 | 2.69 | 2.70 | | | | | | | | | | | | | | | | | | | |
| 80 | 0.35 | 0.31 | 0.27 | 0.28 | 0.28 | | | | | | | | | | | | | | | | | | | |
| 85 | 0.11 | 0.08 | 0.10 | 0.08 | 0.10 | | | | | | | | | | | | | | | | | | | |
| 90 | 0.08 | 0.08 | 0.08 | 0.08 | 0.08 | | | | | | | | | | | | | | | | | | | |
| | | | | | | | | | | | | | | | | | | | | | | | | |
| | | | | | | | | | | | | | | | | | | | | | | | | |
| | | | | | | | | | | | | | | | | | | | | | | | | |
| | | | | | | | | | | | | | | | | | | | | | | | | |
| | | | | | | | | | | | | | | | | | | | | | | | | |
| | | | | | | | | | | | | | | | | | | | | | | | | |
| | | | | | | | | | | | | | | | | | | | | | | | | |
| | | | | | | | | | | | | | | | | | | | | | | | | |
| | | | | | | | | | | | | | | | | | | | | | | | | |
| | | | | | | | | | | | | | | | | | | | | | | | | |
| | | | | | | | | | | | | | | | | | | | | | | | | |

C Range: 0 - 360DEG
 C Interval: 15.0DEG
 Test Speed: HIGH
 Temperature:25.3DEG
 Operators:Jason
 Test Date:2020-08-29

γ Range: 0 - 90DEG
 γ Interval: 0.5DEG
 Test System:EVERFINE GO-2000B_V1 SYSTEM V2.0.362
 Humidity:58%
 Test Distance:5.850m [K=1.0000]
 Remarks: