

T150-25W-TW-927-60



Light Output Ratio:	100.0%	
Luminaire Power:	24.55 W	
SHR Nominal:	1.00	Calculated using the TM5
SHR Maximum:	1.00	fine grid method.

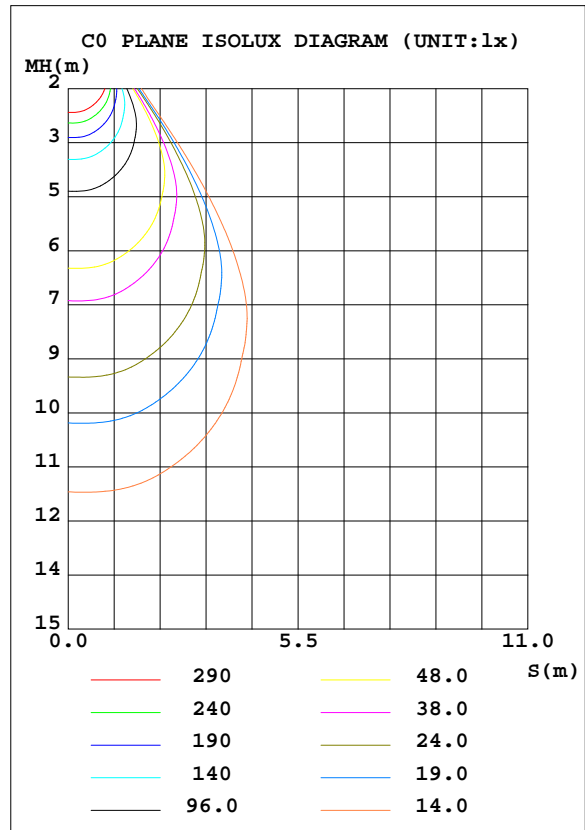
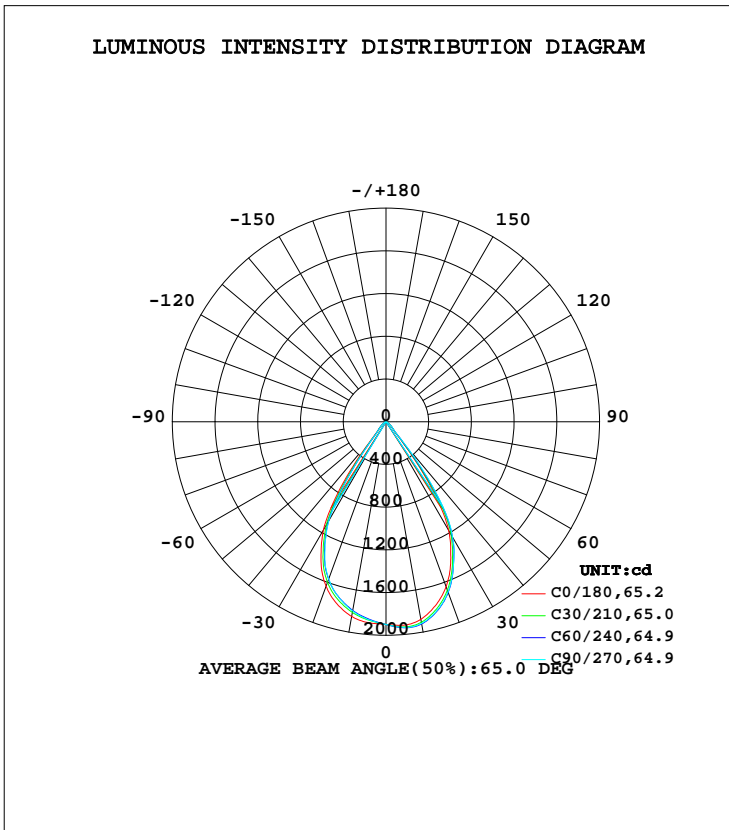
C Range: 0 - 360DEG
C Interval: 15.0DEG
Test Speed: HIGH
Temperature: 25.3DEG
Operators: Jason
Test Date: 2020-08-29

γ Range: 0 - 90DEG
 γ Interval: 0.5DEG
Test System: EVERFINE GO-2000B_V1 SYSTEM V2.0.362
Humidity: 58%
Test Distance: 5.850m [K=1.0000]
Remarks:

LUMINAIRE PHOTOMETRIC TEST REPORT

Test:U:35.08V I:0.7000A P:24.55W PF:1.000 Freq:0Hz Lamp Flux:1869x1 lm		
NAME: T150-25W-TW-927-60	TYPE:Downlight	SERIAL No.:
SPEC.:2700K	DIM.: φ160mm*H100mm	
MFR.: NEKO LIGHTING AG		

DATA OF LAMP		PHOTOMETRIC DATA Eff: 76.12 lm/W			
MODEL	BRIDGELUX-2700K	I _{max} (cd)	1941	S/MH(C0/180)	0.95
NOMINAL POWER(W)	25	LOR(%)	100.0	S/MH(C90/270)	0.91
RATED VOLTAGE(V)	36	TOTAL FLUX(lm)	1869.0	η UP, DN(C0-180)	0.0,52.8
NOMINAL FLUX(lm)	1869	CIE CLASS	DIRECT	η UP, DN(C180-360)	0.0,47.2
LAMPS INSIDE	1	η up(%)	0.0	CIBSE SHR NOM	1.00
TEST VOLTAGE(V)	35.075	η down(%)	100.0	CIBSE SHR MAX	1.00



C Range: 0 - 360DEG
 C Interval: 15.0DEG
 Test Speed: HIGH
 Temperature:25.3DEG
 Operators:Jason
 Test Date:2020-08-29

γ Range: 0 - 90DEG
 γ Interval: 0.5DEG
 Test System:EVERFINE GO-2000B_V1 SYSTEM V2.0.362
 Humidity:58%
 Test Distance:5.850m [K=1.0000]
 Remarks:

ZONAL FLUX DIAGRAM

ZONAL FLUX DIAGRAM:

γ	C0	C45	C90	C135	C180	C225	C270	C315	γ	Φ zone	Φ total	%lum,lamp
10	1879	1920	1918	1889	1851	1798	1799	1840	0- 10	180.1	180.1	9.64,9.64
20	1644	1699	1698	1677	1640	1579	1568	1593	10- 20	496.9	677.0	36.2,36.2
30	1174	1240	1247	1233	1174	1088	1071	1080	20- 30	651.1	1328	71.1,71.1
40	180.0	242.4	266.0	284.1	180.1	143.8	142.1	136.0	30- 40	417.4	1746	93.4,93.4
50	58.71	62.81	63.78	63.33	59.49	58.17	56.09	52.46	40- 50	75.64	1821	97.4,97.4
60	16.58	19.70	20.56	19.82	17.00	17.60	17.40	15.12	50- 60	32.73	1854	99.2,99.2
70	6.283	7.195	7.692	7.261	6.453	6.883	6.940	5.725	60- 70	11.35	1865	99.8,99.8
80	0.5781	0.8061	0.9744	1.092	0.5987	0.4892	0.3731	0.2501	70- 80	3.578	1869	100,100
90	0.1235	0.1221	0.1247	0.1230	0.0715	0.0698	0.0722	0.0703	80- 90	0.1847	1869	100,100
100									90-100			
110									100-110			
120									110-120			
130									120-130			
140									130-140			
150									140-150			
160									150-160			
170									160-170			
180									170-180			
DEG	LUMINOUS INTENSITY:cd									UNIT:lm		

Conical surface Flux(90deg): 1791.2 lm

%lum = 95.8%
%lamp = 95.8%

Conical surface Flux(120deg): 1853.9 lm

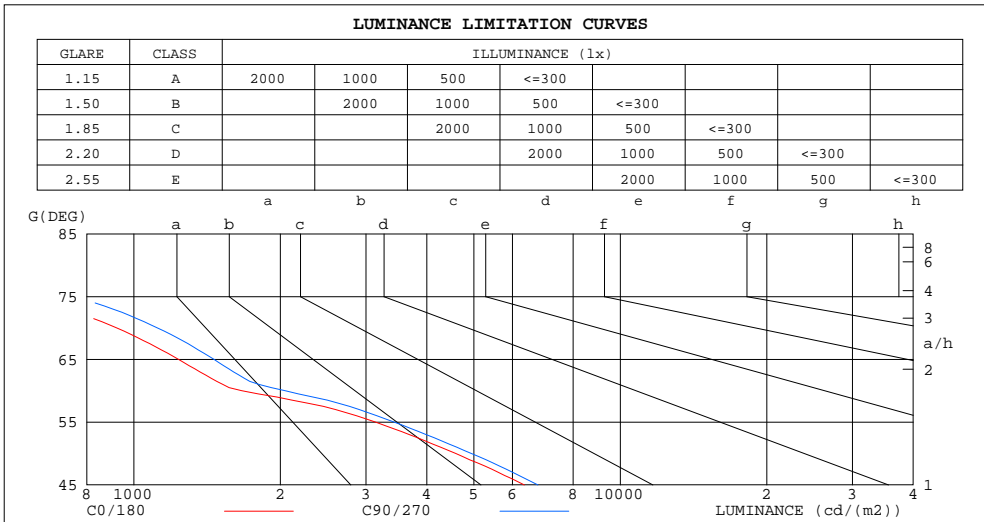
%lum = 99.2%
%lamp = 99.2%

C Range: 0 - 360DEG
C Interval: 15.0DEG
Test Speed: HIGH
Temperature:25.3DEG
Operators:Jason
Test Date:2020-08-29

γ Range: 0 - 90DEG
 γ Interval: 0.5DEG
Test System:EVERFINE GO-2000B_V1 SYSTEM V2.0.362
Humidity:58%
Test Distance:5.850m [K=1.0000]
Remarks:

LUMINANCE LIMITATION CURVES

Test:U:35.08V I:0.7000A P:24.55W PF:1.000 Freq:0Hz Lamp Flux:1869x1 lm		
NAME: T150-25W-TW-927-60	TYPE:Downlight	SERIAL No.:
SPEC.:2700K	DIM.: φ160mm*H100mm	
MFR.: NEKO LIGHTING AG		



LUMINANCE cd/(m2)		
G(DEG)	C0/180	C90/270
85	79	85
80	167	279
75	587	752
70	922	1118
65	1234	1461
60	1665	2045
55	3137	3426
50	4586	4934
45	6349	6769

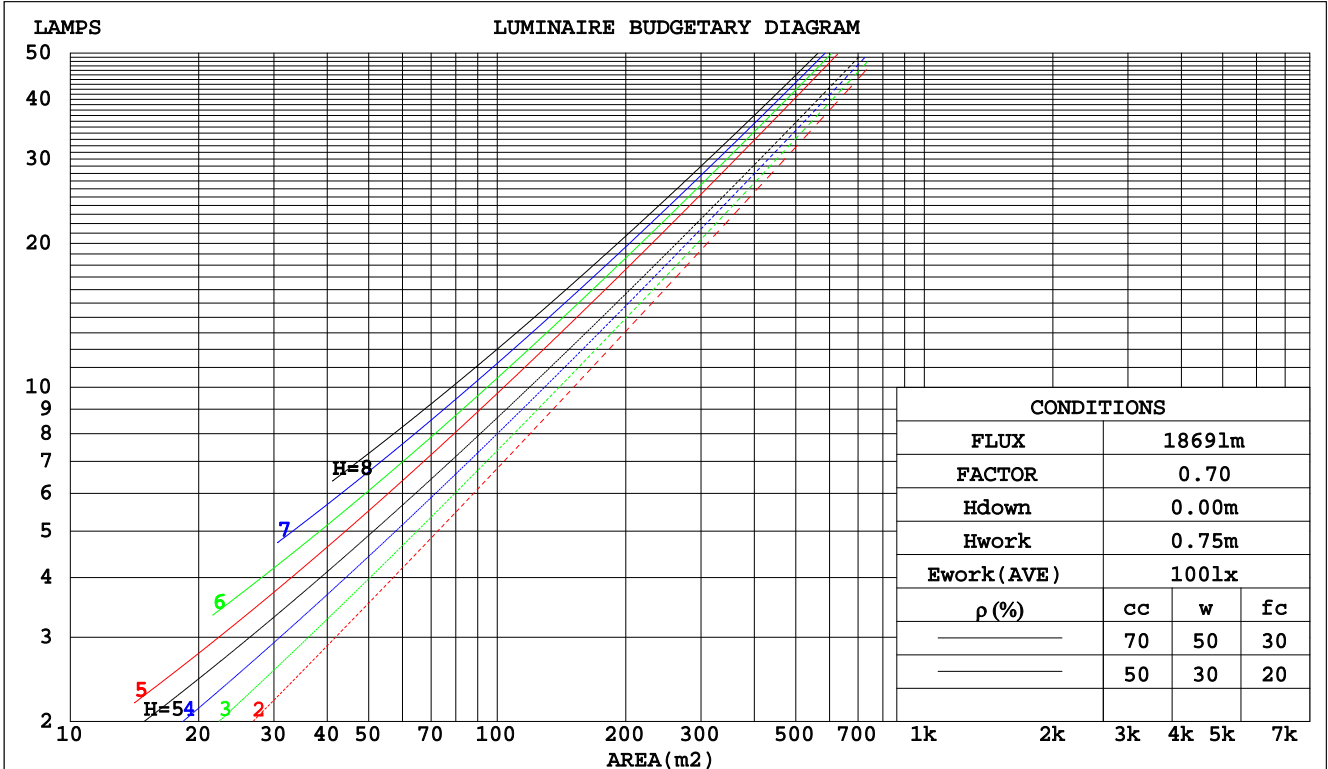
C Range: 0 - 360DEG
 C Interval: 15.0DEG
 Test Speed: HIGH
 Temperature:25.3DEG
 Operators:Jason
 Test Date:2020-08-29

γ Range: 0 - 90DEG
 γ Interval: 0.5DEG
 Test System:EVERFINE GO-2000B_V1 SYSTEM V2.0.362
 Humidity:58%
 Test Distance:5.850m [K=1.0000]
 Remarks:

CU AND LUMINAIRE BUDGETARY ESTIMATE DIAGRAM

Test:U:35.08V I:0.7000A P:24.55W PF:1.000 Freq:0Hz Lamp Flux:1869x1 lm		
NAME: T150-25W-TW-927-60	TYPE:Downlight	SERIAL No.:
SPEC.:2700K	DIM.: φ160mm*H100mm	
MFR.: NEKO LIGHTING AG		

pcc	80%			70%			50%			30%			10%			0
	50%	30%	10%	50%	30%	10%	50%	30%	10%	50%	30%	10%	50%	30%	10%	0
pw																
pfc																
RCR	RCR:Room Cavity Ratio															
	Coefficients of Utilization(CU)															
0.0	1.19	1.19	1.19	1.16	1.16	1.16	1.11	1.11	1.11	1.06	1.06	1.06	1.02	1.02	1.02	.00
1.0	1.11	1.08	1.06	1.08	1.06	1.04	1.04	1.03	1.01	1.01	.99	.98	.97	.96	.95	.93
2.0	1.03	.99	.95	1.01	.97	.94	.98	.95	.92	.95	.92	.90	.92	.90	.88	.87
3.0	.96	.91	.87	.94	.90	.86	.92	.88	.85	.89	.86	.83	.87	.84	.82	.80
4.0	.89	.84	.80	.88	.83	.79	.86	.82	.78	.84	.80	.77	.82	.79	.76	.75
5.0	.84	.78	.73	.83	.77	.73	.81	.76	.72	.79	.75	.72	.78	.74	.71	.70
6.0	.78	.72	.68	.78	.72	.68	.76	.71	.67	.75	.70	.67	.73	.69	.66	.65
7.0	.74	.68	.63	.73	.67	.63	.72	.66	.63	.70	.66	.62	.69	.65	.62	.61
8.0	.69	.63	.59	.69	.63	.59	.68	.62	.59	.67	.62	.58	.66	.61	.58	.57
9.0	.65	.59	.55	.65	.59	.55	.64	.59	.55	.63	.58	.55	.62	.58	.55	.53
10.0	.62	.56	.52	.61	.56	.52	.60	.55	.52	.60	.55	.52	.59	.55	.51	.50



C Range: 0 - 360DEG
 C Interval: 15.0DEG
 Test Speed: HIGH
 Temperature: 25.3DEG
 Operators: Jason
 Test Date: 2020-08-29

γ Range: 0 - 90DEG
 γ Interval: 0.5DEG
 Test System: EVERFINE GO-2000B_V1 SYSTEM V2.0.362
 Humidity: 58%
 Test Distance: 5.850m [K=1.0000]
 Remarks:

WEC AND CCEC

Test:U:35.08V I:0.7000A P:24.55W PF:1.000 Freq:0Hz Lamp Flux:1869x1 lm		
NAME: T150-25W-TW-927-60	TYPE:Downlight	SERIAL No.:
SPEC.:2700K	DIM.: φ160mm*H100mm	
MFR.: NEKO LIGHTING AG		

ρcc	80%			70%			50%			30%			10%			0
ρw	50%	30%	10%	50%	30%	10%	50%	30%	10%	50%	30%	10%	50%	30%	10%	0
ρfc	20%			20%			20%			20%			20%			0
RCR	RCR:Room Cavity Ratio						Wall Exitance Coefficients(WEC)									
0.0																
1.0	.180	.102	.032	.173	.099	.031	.161	.092	.029	.149	.086	.028	.138	.080	.026	
2.0	.173	.095	.029	.167	.092	.028	.156	.087	.027	.147	.082	.026	.138	.078	.025	
3.0	.165	.088	.026	.160	.086	.026	.151	.082	.025	.143	.078	.024	.135	.075	.023	
4.0	.157	.082	.024	.153	.080	.024	.145	.077	.023	.138	.074	.022	.131	.071	.022	
5.0	.150	.076	.022	.146	.075	.022	.139	.073	.021	.133	.070	.021	.127	.068	.020	
6.0	.143	.072	.021	.140	.071	.020	.134	.069	.020	.128	.067	.020	.123	.065	.019	
7.0	.137	.068	.019	.134	.067	.019	.129	.065	.019	.124	.063	.018	.119	.062	.018	
8.0	.131	.064	.018	.129	.063	.018	.124	.062	.018	.119	.060	.017	.115	.059	.017	
9.0	.126	.061	.017	.123	.060	.017	.119	.059	.017	.115	.058	.017	.111	.056	.016	
10.0	.121	.058	.016	.119	.057	.016	.115	.056	.016	.111	.055	.016	.108	.054	.016	

ρcc	80%			70%			50%			30%			10%			0
ρw	50%	30%	10%	50%	30%	10%	50%	30%	10%	50%	30%	10%	50%	30%	10%	0
ρfc	20%			20%			20%			20%			20%			0
RCR	RCR:Room Cavity Ratio						Ceiling Cavity Exitance Coefficients(CCEC)									
0.0	.190	.190	.190	.163	.163	.163	.111	.111	.111	.064	.064	.064	.020	.020	.020	
1.0	.171	.157	.145	.147	.135	.124	.100	.093	.086	.058	.054	.050	.018	.017	.016	
2.0	.156	.132	.112	.134	.114	.097	.092	.079	.068	.053	.046	.040	.017	.015	.013	
3.0	.144	.114	.089	.124	.098	.077	.085	.068	.054	.049	.040	.032	.016	.013	.010	
4.0	.134	.099	.072	.115	.085	.063	.079	.060	.044	.046	.035	.026	.015	.011	.009	
5.0	.126	.087	.059	.108	.076	.051	.074	.053	.036	.043	.031	.022	.014	.010	.007	
6.0	.118	.078	.049	.102	.068	.043	.070	.047	.030	.041	.028	.018	.013	.009	.006	
7.0	.112	.071	.042	.096	.061	.036	.067	.043	.026	.039	.025	.015	.012	.008	.005	
8.0	.106	.064	.036	.092	.056	.031	.063	.039	.022	.037	.023	.013	.012	.008	.004	
9.0	.101	.059	.031	.087	.051	.027	.061	.036	.019	.035	.021	.011	.011	.007	.004	
10.0	.097	.055	.027	.084	.048	.024	.058	.034	.017	.034	.020	.010	.011	.007	.003	

C Range: 0 - 360DEG
 C Interval: 15.0DEG
 Test Speed: HIGH
 Temperature:25.3DEG
 Operators:Jason
 Test Date:2020-08-29

γ Range: 0 - 90DEG
 γ Interval: 0.5DEG
 Test System:EVERFINE GO-2000B_V1 SYSTEM V2.0.362
 Humidity:58%
 Test Distance:5.850m [K=1.0000]
 Remarks:

UGR(Unified Glare Rating) Table

Test:U:35.08V I:0.7000A P:24.55W PF:1.000 Freq:0Hz Lamp Flux:1869x1 lm		
NAME: T150-25W-TW-927-60	TYPE:Downlight	SERIAL No.:
SPEC.:2700K	DIM.: φ160mm*H100mm	
MFR.: NEKO LIGHTING AG		

ceiling/cavity	0.7	0.7	0.5	0.5	0.3	0.7	0.7	0.5	0.5	0.3
walls	0.5	0.3	0.5	0.3	0.3	0.5	0.3	0.5	0.3	0.3
working plane	0.2	0.2	0.2	0.2	0.2	0.2	0.2	0.2	0.2	0.2
Room dimensions	Viewed crosswise					Viewed endwise				
x = 2H y = 2H	15.0	15.9	15.2	16.1	16.3	15.5	16.5	15.7	16.6	16.8
3H	14.8	15.7	15.1	15.9	16.1	15.4	16.2	15.6	16.4	16.6
4H	14.7	15.6	15.0	15.8	16.0	15.3	16.1	15.6	16.3	16.6
6H	14.7	15.4	15.0	15.7	15.9	15.2	16.0	15.5	16.2	16.5
8H	14.6	15.4	14.9	15.6	15.9	15.1	15.9	15.5	16.2	16.4
12H	14.6	15.3	14.9	15.6	15.8	15.1	15.8	15.4	16.1	16.4
4H 2H	14.7	15.6	15.0	15.8	16.0	15.3	16.1	15.5	16.3	16.5
3H	14.6	15.3	14.9	15.6	15.9	15.1	15.9	15.5	16.1	16.4
4H	14.5	15.2	14.9	15.5	15.8	15.1	15.7	15.4	16.0	16.3
6H	14.4	15.0	14.8	15.3	15.7	15.0	15.5	15.3	15.9	16.2
8H	14.4	14.9	14.8	15.3	15.6	14.9	15.4	15.3	15.8	16.2
12H	14.3	14.8	14.7	15.2	15.6	14.9	15.3	15.3	15.7	16.1
8H 4H	14.4	14.9	14.8	15.3	15.6	14.9	15.4	15.3	15.8	16.2
6H	14.3	14.7	14.7	15.1	15.5	14.8	15.3	15.3	15.7	16.1
8H	14.2	14.6	14.7	15.0	15.5	14.8	15.2	15.2	15.6	16.0
12H	14.2	14.5	14.6	15.0	15.4	14.7	15.0	15.2	15.5	16.0
12H 4H	14.3	14.8	14.7	15.2	15.6	14.9	15.4	15.3	15.7	16.1
6H	14.2	14.6	14.7	15.0	15.5	14.8	15.2	15.2	15.6	16.0
8H	14.2	14.5	14.6	15.0	15.4	14.7	15.0	15.2	15.5	16.0
Variations with the observer position at spacings:										
S = 1.0H	+ 3.8 / - 7.4					+ 4.0 / - 7.9				
1.5H	+ 5.9 / - 5.2					+ 6.3 / - 5.8				
2.0H	+ 3.4 / - 4.3					+ 3.3 / - 4.1				

CIE Pub.117, 1869 lm Total Lamp Luminous Flux Correct (8log(F/F0) = 2.2)

C Range: 0 - 360DEG
 C Interval: 15.0DEG
 Test Speed: HIGH
 Temperature:25.3DEG
 Operators:Jason
 Test Date:2020-08-29

γ Range: 0 - 90DEG
 γ Interval: 0.5DEG
 Test System:EVERFINE GO-2000B_V1 SYSTEM V2.0.362
 Humidity:58%
 Test Distance:5.850m [K=1.0000]
 Remarks:

UTILIZATION FACTORS TABLE

Test:U:35.08V I:0.7000A P:24.55W PF:1.000 Freq:0Hz Lamp Flux:1869x1 lm		
NAME: T150-25W-TW-927-60	TYPE:Downlight	SERIAL No.:
SPEC.:2700K	DIM.: φ160mm*H100mm	
MFR.: NEKO LIGHTING AG		

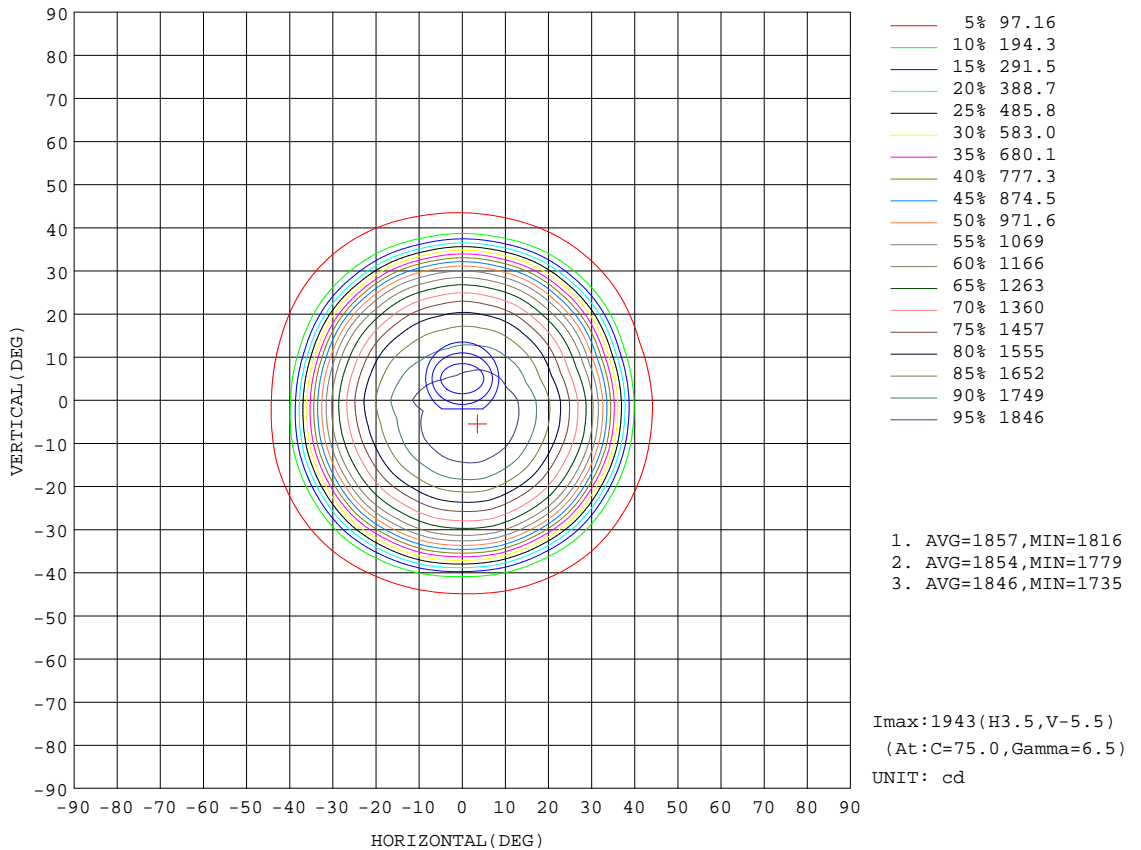
REFLECTANCE										
Ceiling	0.8	0.8	0.8	0.7	0.7	0.7	0.5	0.5	0.5	0
Walls	0.7	0.5	0.3	0.7	0.5	0.3	0.7	0.5	0.3	0
Working plane	0.2	0.2	0.2	0.2	0.2	0.2	0.2	0.2	0.2	0
ROOM INDEX	UTILIZATION FACTORS(PERCENT) $k(RI) \times RCR = 5$									
k = 0.60	87	81	77	87	81	77	86	80	77	73
0.80	95	89	85	94	89	85	93	88	85	81
1.00	99	94	90	98	93	90	97	93	89	85
1.25	103	98	95	102	98	94	100	96	93	89
1.50	106	101	98	105	101	97	103	99	96	92
2.00	109	105	101	107	103	101	105	101	99	94
2.50	110	107	104	109	105	103	106	103	101	95
3.00	112	108	106	110	107	105	107	104	102	96
4.00	114	111	109	112	109	108	108	106	105	98
5.00	115	113	111	113	111	109	109	108	106	99
ROOM INDEX	UF(total)									Direct
According to DIN EN 13032-2 2004			Suspended				SHRNOM = 1.25			

C Range: 0 - 360DEG
 C Interval: 15.0DEG
 Test Speed: HIGH
 Temperature:25.3DEG
 Operators:Jason
 Test Date:2020-08-29

γ Range: 0 - 90DEG
 γ Interval: 0.5DEG
 Test System:EVERFINE GO-2000B_V1 SYSTEM V2.0.362
 Humidity:58%
 Test Distance:5.850m [K=1.0000]
 Remarks:

ISOCANDELA DIAGRAM

Test:U:35.08V I:0.7000A P:24.55W PF:1.000 Freq:0Hz Lamp Flux:1869x1 lm		
NAME: T150-25W-TW-927-60	TYPE:Downlight	SERIAL No.:
SPEC.:2700K	DIM.: φ160mm*H100mm	
MFR.: NEKO LIGHTING AG		



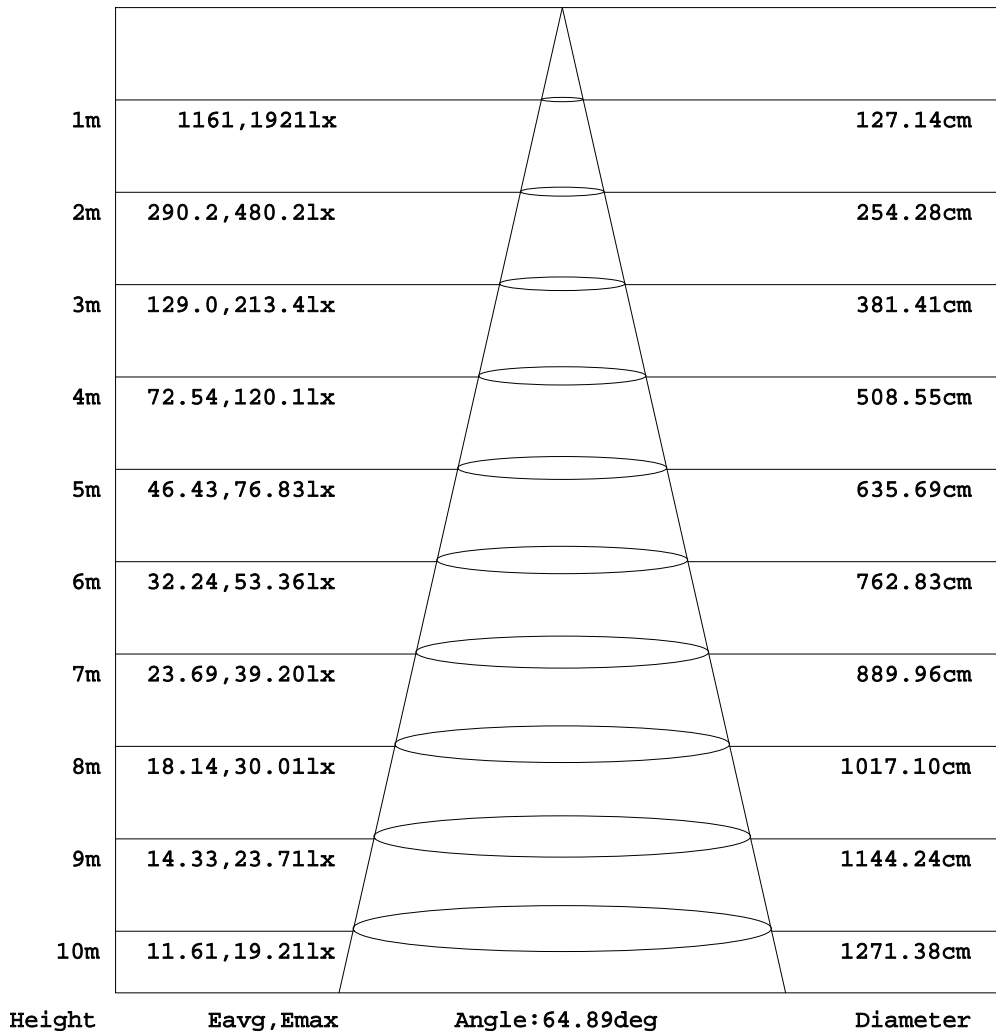
C Range: 0 - 360DEG
C Interval: 15.0DEG
Test Speed: HIGH
Temperature:25.3DEG
Operators:Jason
Test Date:2020-08-29

γ Range: 0 - 90DEG
γ Interval: 0.5DEG
Test System:EVERFINE GO-2000B_V1 SYSTEM V2.0.362
Humidity:58%
Test Distance:5.850m [K=1.0000]
Remarks:

AAI Figure

Test:U:35.08V I:0.7000A P:24.55W PF:1.000 Freq:0Hz Lamp Flux:1869x1 lm		
NAME: T150-25W-TW-927-60	TYPE:Downlight	SERIAL No.:
SPEC.:2700K	DIM.: φ160mm*H100mm	
MFR.: NEKO LIGHTING AG		

Flux out:1480 lm



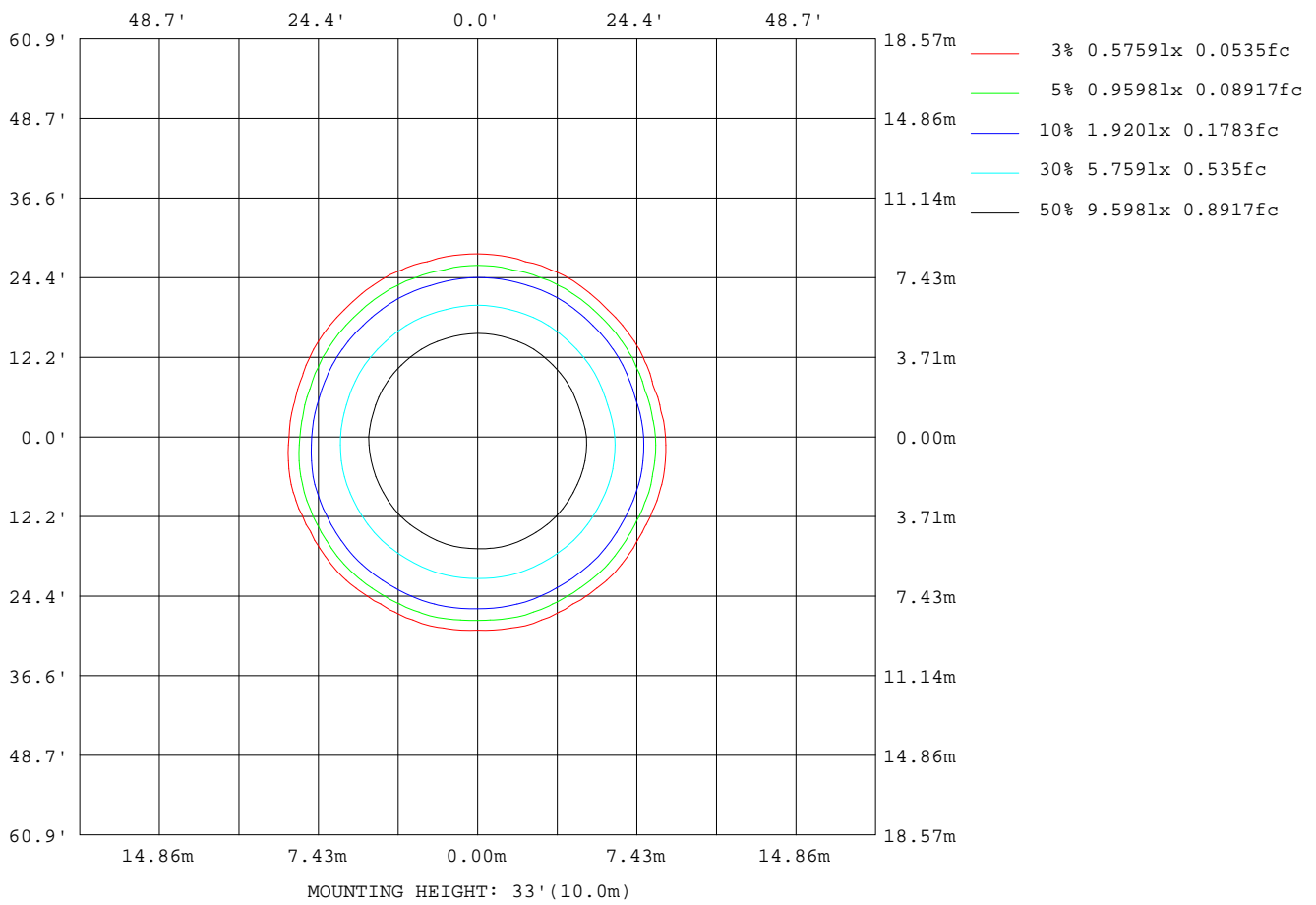
Note:The Curves indicate the illuminated area and the average illumination when the luminaire is at different distance.

C Range: 0 - 360DEG
C Interval: 15.0DEG
Test Speed: HIGH
Temperature:25.3DEG
Operators:Jason
Test Date:2020-08-29

γ Range: 0 - 90DEG
γ Interval: 0.5DEG
Test System:EVERFINE GO-2000B_V1 SYSTEM V2.0.362
Humidity:58%
Test Distance:5.850m [K=1.0000]
Remarks:

ISOLUX DIAGRAM

Test:U:35.08V I:0.7000A P:24.55W PF:1.000 Freq:0Hz Lamp Flux:1869x1 lm		
NAME: T150-25W-TW-927-60	TYPE:Downlight	SERIAL No.:
SPEC.:2700K	DIM.: φ160mm*H100mm	
MFR.: NEKO LIGHTING AG		



C Range: 0 - 360DEG
 C Interval: 15.0DEG
 Test Speed: HIGH
 Temperature:25.3DEG
 Operators:Jason
 Test Date:2020-08-29

γ Range: 0 - 90DEG
 γ Interval: 0.5DEG
 Test System:EVERFINE GO-2000B_V1 SYSTEM V2.0.362
 Humidity:58%
 Test Distance:5.850m [K=1.0000]
 Remarks:

LED Avg.L Report

Test:U:35.08V I:0.7000A P:24.55W PF:1.000 Freq:0Hz Lamp Flux:1869x1 lm		
NAME: T150-25W-TW-927-60	TYPE:Downlight	SERIAL No.:
SPEC.:2700K	DIM.: φ160mm*H100mm	
MFR.: NEKO LIGHTING AG		

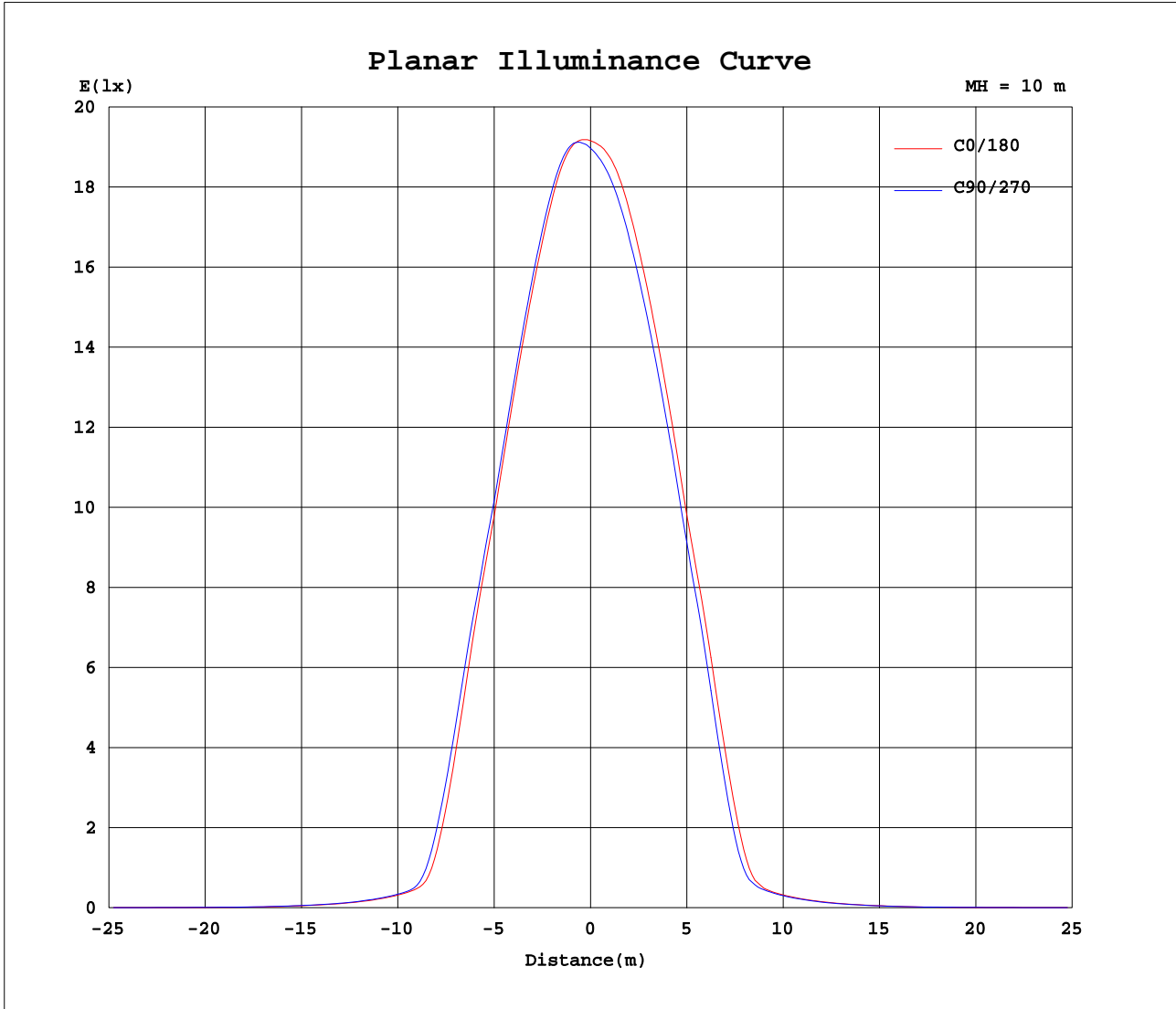
AvgL	cd/m2
L_0~180(65)av	1238
L_0~180(75)av	589
L_0~180(85)av	64
L_90~270(65)av	1409
L_90~270(75)av	671
L_90~270(85)av	64
L_45(65)av	1312
L_45(75)av	619
L_45(85)av	66

Standard: GB/T 29293-2012

C Range: 0 - 360DEG
C Interval: 15.0DEG
Test Speed: HIGH
Temperature:25.3DEG
Operators:Jason
Test Date:2020-08-29

γ Range: 0 - 90DEG
γ Interval: 0.5DEG
Test System:EVERFINE GO-2000B_V1 SYSTEM V2.0.362
Humidity:58%
Test Distance:5.850m [K=1.0000]
Remarks:

Planar Illuminance Curve



C Range: 0 - 360DEG
 C Interval: 15.0DEG
 Test Speed: HIGH
 Temperature: 25.3DEG
 Operators: Jason
 Test Date: 2020-08-29

γ Range: 0 - 90DEG
 γ Interval: 0.5DEG
 Test System: EVERFINE GO-2000B_V1 SYSTEM V2.0.362
 Humidity: 58%
 Test Distance: 5.850m [K=1.0000]
 Remarks:

