

T150-18W-TW-965-60



Light Output Ratio:	100.0%	
Luminaire Power:	17.8 W	
SHR Nominal:	0.75	Calculated using the TM5
SHR Maximum:	0.95	fine grid method.

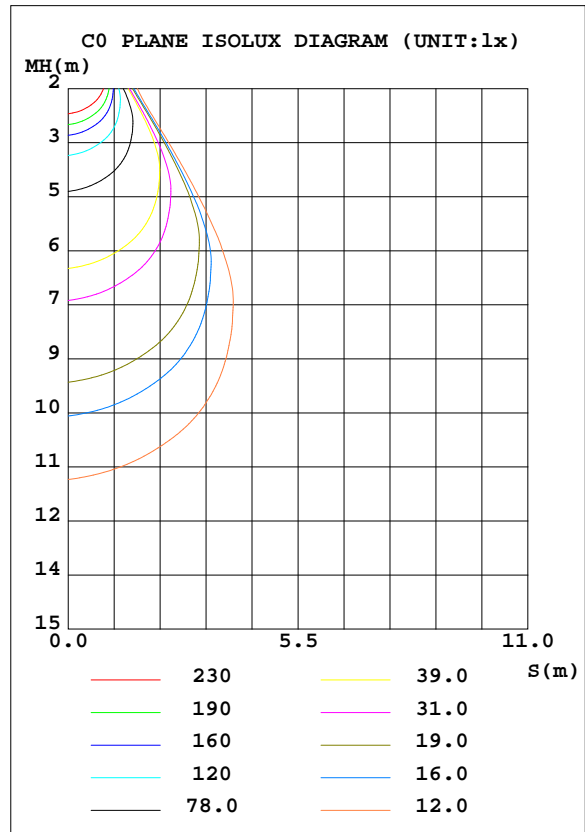
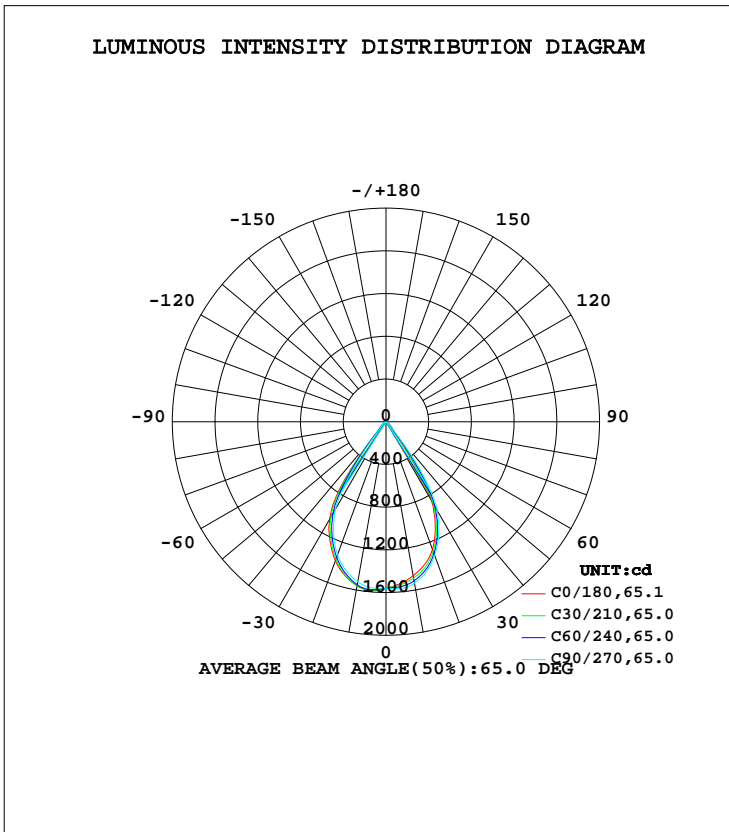
C Range: 0 - 360DEG
C Interval: 15.0DEG
Test Speed: HIGH
Temperature: 25.3DEG
Operators: Jason
Test Date: 2020-08-29

γ Range: 0 - 90DEG
 γ Interval: 0.5DEG
Test System: EVERFINE GO-2000B_V1 SYSTEM V2.0.362
Humidity: 58%
Test Distance: 5.850m [K=1.0000]
Remarks:

LUMINAIRE PHOTOMETRIC TEST REPORT

Test:U:35.60V I:0.5000A P:17.80W PF:1.000 Freq:0Hz Lamp Flux:1510.45x1 lm		
NAME: T150-18W-TW-965-60	TYPE:Downlight	SERIAL No.:
SPEC.:6500K	DIM.: φ160mm*H100mm	
MFR.: NEKO LIGHTING AG		

DATA OF LAMP		PHOTOMETRIC DATA Eff: 84.86 lm/W			
MODEL	BRIDGELUX-6500K	I _{max} (cd)	1589	S/MH(C0/180)	0.99
NOMINAL POWER(W)	18	LOR(%)	100.0	S/MH(C90/270)	0.94
RATED VOLTAGE(V)	36	TOTAL FLUX(lm)	1510.5	η UP, DN(C0-180)	0.0,50.3
NOMINAL FLUX(lm)	1510.45	CIE CLASS	DIRECT	η UP, DN(C180-360)	0.0,49.7
LAMPS INSIDE	1	η up(%)	0.0	CIBSE SHR NOM	0.75
TEST VOLTAGE(V)	35.6	η down(%)	100.0	CIBSE SHR MAX	0.95



C Range: 0 - 360DEG
C Interval: 15.0DEG
Test Speed: HIGH
Temperature:25.3DEG
Operators:Jason
Test Date:2020-08-29

γ Range: 0 - 90DEG
γ Interval: 0.5DEG
Test System:EVERFINE GO-2000B_V1 SYSTEM V2.0.362
Humidity:58%
Test Distance:5.850m [K=1.0000]
Remarks:

ZONAL FLUX DIAGRAM

ZONAL FLUX DIAGRAM:

γ	C0	C45	C90	C135	C180	C225	C270	C315	γ	Φ zone	Φ total	%lum,lamp
10	1464	1501	1535	1566	1560	1556	1523	1466	0- 10	147.6	147.6	9.77,9.77
20	1272	1309	1334	1379	1385	1355	1326	1278	10- 20	404.7	552.3	36.6,36.6
30	856.7	907.3	959.4	1033	1054	1006	948.9	875.1	20- 30	530.7	1083	71.7,71.7
40	100.8	116.3	148.2	182.5	185.0	161.5	127.7	103.0	30- 40	330.1	1413	93.5,93.5
50	42.31	46.80	50.41	53.69	53.51	45.83	43.60	44.22	40- 50	58.94	1472	97.5,97.5
60	13.56	13.69	15.15	17.77	17.78	13.58	12.27	13.34	50- 60	26.17	1498	99.2,99.2
70	5.256	5.352	5.698	6.312	6.707	5.308	4.774	5.162	60- 70	9.255	1507	99.8,99.8
80	0.1944	0.3592	0.6550	0.8545	1.033	0.5998	0.3189	0.2512	70- 80	2.916	1510	100,100
90	0.1006	0.0984	0.0984	0.0962	0.0634	0.0613	0.0612	0.0590	80- 90	0.1525	1510	100,100
100									90-100			
110									100-110			
120									110-120			
130									120-130			
140									130-140			
150									140-150			
160									150-160			
170									160-170			
180									170-180			
DEG	LUMINOUS INTENSITY:cd									UNIT:lm		

Conical surface Flux(90deg): 1448 lm

%lum = 95.9%
%lamp = 95.9%

Conical surface Flux(120deg): 1498.1 lm

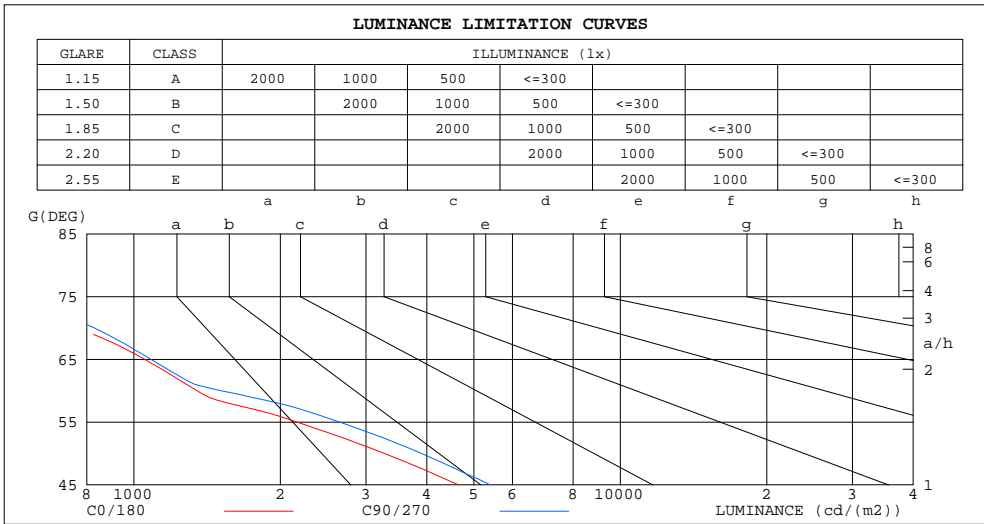
%lum = 99.2%
%lamp = 99.2%

C Range: 0 - 360DEG
C Interval: 15.0DEG
Test Speed: HIGH
Temperature:25.3DEG
Operators:Jason
Test Date:2020-08-29

γ Range: 0 - 90DEG
 γ Interval: 0.5DEG
Test System:EVERFINE GO-2000B_V1 SYSTEM V2.0.362
Humidity:58%
Test Distance:5.850m [K=1.0000]
Remarks:

LUMINANCE LIMITATION CURVES

Test:U:35.60V I:0.5000A P:17.80W PF:1.000 Freq:0Hz Lamp Flux:1510.45x1 lm		
NAME: T150-18W-TW-965-60	TYPE:Downlight	SERIAL No.:
SPEC.:6500K	DIM.: φ160mm*H100mm	
MFR.: NEKO LIGHTING AG		



LUMINANCE cd/(m2)		
G(DEG)	C0/180	C90/270
85	62	65
80	56	188
75	411	549
70	764	829
65	1053	1084
60	1348	1508
55	2165	2647
50	3273	3904
45	4655	5410

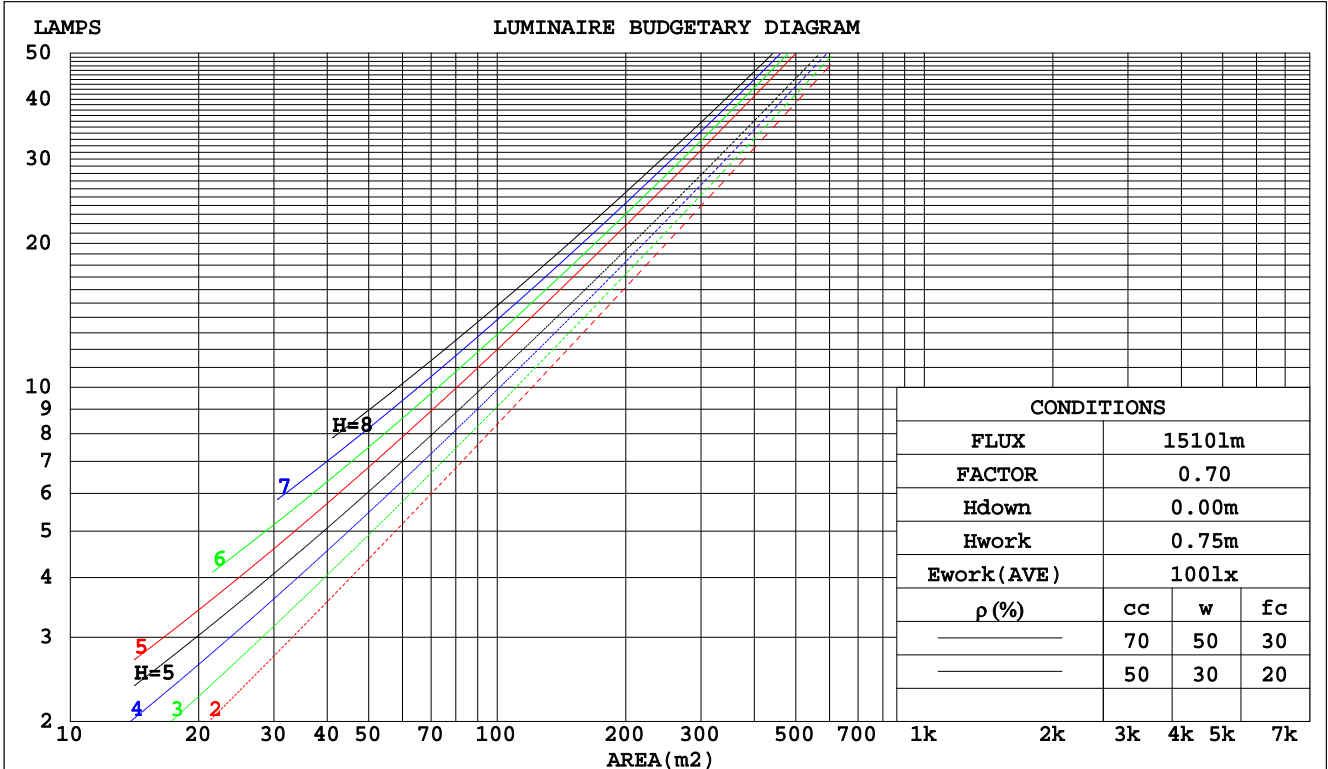
C Range: 0 - 360DEG
 C Interval: 15.0DEG
 Test Speed: HIGH
 Temperature:25.3DEG
 Operators:Jason
 Test Date:2020-08-29

γ Range: 0 - 90DEG
 γ Interval: 0.5DEG
 Test System:EVERFINE GO-2000B_V1 SYSTEM V2.0.362
 Humidity:58%
 Test Distance:5.850m [K=1.0000]
 Remarks:

CU AND LUMINAIRE BUDGETARY ESTIMATE DIAGRAM

Test:U:35.60V I:0.5000A P:17.80W PF:1.000 Freq:0Hz Lamp Flux:1510.45x1 lm		
NAME: T150-18W-TW-965-60	TYPE:Downlight	SERIAL No.:
SPEC.:6500K	DIM.: φ160mm*H100mm	
MFR.: NEKO LIGHTING AG		

ρcc	80%			70%			50%			30%			10%			0
ρw	50%	30%	10%	50%	30%	10%	50%	30%	10%	50%	30%	10%	50%	30%	10%	0
ρfc	20%			20%			20%			20%			20%			0
RCR	RCR:Room Cavity Ratio															
	Coefficients of Utilization(CU)															
0.0	1.19	1.19	1.19	1.16	1.16	1.16	1.11	1.11	1.11	1.06	1.06	1.06	1.02	1.02	1.02	1.00
1.0	1.11	1.08	1.06	1.09	1.06	1.04	1.04	1.03	1.01	1.01	.99	.98	.97	.96	.95	.93
2.0	1.03	.99	.95	1.01	.97	.94	.98	.95	.92	.95	.92	.90	.92	.90	.88	.87
3.0	.96	.91	.87	.94	.90	.86	.92	.88	.85	.89	.86	.83	.87	.84	.82	.81
4.0	.89	.84	.80	.88	.83	.79	.86	.82	.78	.84	.80	.77	.82	.79	.76	.75
5.0	.84	.78	.74	.83	.77	.73	.81	.76	.73	.79	.75	.72	.78	.74	.71	.70
6.0	.79	.73	.68	.78	.72	.68	.76	.71	.67	.75	.70	.67	.73	.70	.67	.65
7.0	.74	.68	.63	.73	.67	.63	.72	.67	.63	.71	.66	.63	.69	.65	.62	.61
8.0	.69	.63	.59	.69	.63	.59	.68	.63	.59	.67	.62	.59	.66	.62	.58	.57
9.0	.65	.60	.56	.65	.59	.55	.64	.59	.55	.63	.58	.55	.62	.58	.55	.54
10.0	.62	.56	.52	.61	.56	.52	.61	.55	.52	.60	.55	.52	.59	.55	.52	.50



C Range: 0 - 360DEG
 C Interval: 15.0DEG
 Test Speed: HIGH
 Temperature: 25.3DEG
 Operators: Jason
 Test Date: 2020-08-29

γ Range: 0 - 90DEG
 γ Interval: 0.5DEG
 Test System: EVERFINE GO-2000B_V1 SYSTEM V2.0.362
 Humidity: 58%
 Test Distance: 5.850m [K=1.0000]
 Remarks:

WEC AND CCEC

Test:U:35.60V I:0.5000A P:17.80W PF:1.000 Freq:0Hz Lamp Flux:1510.45x1 lm		
NAME: T150-18W-TW-965-60	TYPE:Downlight	SERIAL No.:
SPEC.:6500K	DIM.: φ160mm*H100mm	
MFR.: NEKO LIGHTING AG		

ρcc	80%			70%			50%			30%			10%			0
ρw	50%	30%	10%	50%	30%	10%	50%	30%	10%	50%	30%	10%	50%	30%	10%	0
ρfc	20%			20%			20%			20%			20%			0
RCR	RCR:Room Cavity Ratio						Wall Exitance Coefficients(WEC)									
0.0																
1.0	.179	.102	.032	.173	.099	.031	.160	.092	.029	.148	.086	.027	.138	.080	.026	
2.0	.172	.094	.029	.167	.092	.028	.156	.087	.027	.146	.082	.026	.137	.078	.024	
3.0	.164	.087	.026	.159	.085	.026	.150	.081	.025	.142	.078	.024	.134	.074	.023	
4.0	.157	.081	.024	.152	.080	.024	.145	.077	.023	.137	.074	.022	.131	.071	.022	
5.0	.149	.076	.022	.146	.075	.022	.139	.072	.021	.133	.070	.021	.127	.068	.020	
6.0	.143	.072	.020	.139	.070	.020	.133	.068	.020	.128	.066	.020	.123	.065	.019	
7.0	.136	.067	.019	.134	.067	.019	.128	.065	.019	.123	.063	.018	.119	.062	.018	
8.0	.131	.064	.018	.128	.063	.018	.123	.062	.018	.119	.060	.017	.115	.059	.017	
9.0	.125	.061	.017	.123	.060	.017	.119	.059	.017	.115	.057	.016	.111	.056	.016	
10.0	.120	.058	.016	.118	.057	.016	.114	.056	.016	.111	.055	.016	.107	.054	.015	

ρcc	80%			70%			50%			30%			10%			0
ρw	50%	30%	10%	50%	30%	10%	50%	30%	10%	50%	30%	10%	50%	30%	10%	0
ρfc	20%			20%			20%			20%			20%			0
RCR	RCR:Room Cavity Ratio						Ceiling Cavity Exitance Coefficients(CCEC)									
0.0	.190	.190	.190	.163	.163	.163	.111	.111	.111	.064	.064	.064	.020	.020	.020	
1.0	.171	.157	.145	.147	.135	.125	.100	.093	.086	.058	.054	.050	.018	.017	.016	
2.0	.156	.132	.112	.134	.114	.097	.092	.079	.068	.053	.046	.040	.017	.015	.013	
3.0	.144	.114	.089	.124	.098	.077	.085	.068	.054	.049	.040	.032	.016	.013	.010	
4.0	.134	.099	.072	.115	.085	.063	.079	.060	.044	.046	.035	.026	.015	.011	.009	
5.0	.126	.087	.059	.108	.076	.052	.074	.053	.036	.043	.031	.022	.014	.010	.007	
6.0	.118	.078	.049	.102	.068	.043	.070	.047	.030	.041	.028	.018	.013	.009	.006	
7.0	.112	.071	.042	.096	.061	.036	.066	.043	.026	.039	.025	.015	.012	.008	.005	
8.0	.106	.064	.036	.091	.056	.031	.063	.039	.022	.037	.023	.013	.012	.008	.004	
9.0	.101	.059	.031	.087	.051	.027	.060	.036	.019	.035	.021	.011	.011	.007	.004	
10.0	.097	.055	.027	.083	.048	.024	.058	.034	.017	.034	.020	.010	.011	.007	.003	

C Range: 0 - 360DEG
 C Interval: 15.0DEG
 Test Speed: HIGH
 Temperature:25.3DEG
 Operators:Jason
 Test Date:2020-08-29

γ Range: 0 - 90DEG
 γ Interval: 0.5DEG
 Test System:EVERFINE GO-2000B_V1 SYSTEM V2.0.362
 Humidity:58%
 Test Distance:5.850m [K=1.0000]
 Remarks:

UGR(Unified Glare Rating) Table

Test:U:35.60V I:0.5000A P:17.80W PF:1.000 Freq:0Hz Lamp Flux:1510.45x1 lm		
NAME: T150-18W-TW-965-60	TYPE:Downlight	SERIAL No.:
SPEC.:6500K	DIM.: φ160mm*H100mm	
MFR.: NEKO LIGHTING AG		

ceiling/cavity	0.7	0.7	0.5	0.5	0.3	0.7	0.7	0.5	0.5	0.3
walls	0.5	0.3	0.5	0.3	0.3	0.5	0.3	0.5	0.3	0.3
working plane	0.2	0.2	0.2	0.2	0.2	0.2	0.2	0.2	0.2	0.2
Room dimensions	Viewed crosswise					Viewed endwise				
x = 2H y = 2H	13.2	14.2	13.4	14.3	14.5	14.4	15.3	14.6	15.5	15.7
3H	13.1	14.0	13.3	14.2	14.4	14.2	15.1	14.5	15.3	15.5
4H	13.0	13.8	13.3	14.1	14.3	14.2	15.0	14.4	15.2	15.4
6H	12.9	13.7	13.2	13.9	14.2	14.1	14.9	14.4	15.1	15.3
8H	12.9	13.6	13.2	13.9	14.1	14.0	14.8	14.3	15.0	15.3
12H	12.8	13.5	13.1	13.8	14.1	14.0	14.7	14.3	15.0	15.2
4H 2H	13.0	13.8	13.3	14.0	14.3	14.1	15.0	14.4	15.2	15.4
3H	12.9	13.6	13.2	13.9	14.1	14.0	14.7	14.3	15.0	15.3
4H	12.8	13.5	13.2	13.8	14.1	13.9	14.6	14.3	14.9	15.2
6H	12.7	13.3	13.1	13.6	14.0	13.9	14.4	14.2	14.8	15.1
8H	12.7	13.2	13.1	13.5	13.9	13.8	14.3	14.2	14.7	15.1
12H	12.6	13.1	13.0	13.5	13.9	13.8	14.2	14.2	14.6	15.0
8H 4H	12.7	13.2	13.1	13.6	13.9	13.8	14.3	14.2	14.7	15.1
6H	12.6	13.0	13.0	13.4	13.8	13.7	14.1	14.1	14.5	15.0
8H	12.5	12.9	13.0	13.3	13.8	13.7	14.0	14.1	14.5	14.9
12H	12.5	12.8	12.9	13.2	13.7	13.6	13.9	14.1	14.4	14.8
12H 4H	12.6	13.1	13.0	13.5	13.9	13.8	14.2	14.2	14.6	15.0
6H	12.5	12.9	13.0	13.3	13.8	13.7	14.0	14.1	14.5	14.9
8H	12.5	12.8	12.9	13.2	13.7	13.6	13.9	14.1	14.4	14.8
Variations with the observer position at spacings:										
S = 1.0H	+ 2.7 / - 4.4					+ 4.5 / - 6.6				
1.5H	+ 3.8 / - 3.0					+ 6.5 / - 4.9				
2.0H	+ 3.5 / - 3.8					+ 3.6 / - 4.3				

CIE Pub.117, 1510 lm Total Lamp Luminous Flux Correct (8log(F/F0) = 1.4)

C Range: 0 - 360DEG
 C Interval: 15.0DEG
 Test Speed: HIGH
 Temperature:25.3DEG
 Operators:Jason
 Test Date:2020-08-29

γ Range: 0 - 90DEG
 γ Interval: 0.5DEG
 Test System:EVERFINE GO-2000B_V1 SYSTEM V2.0.362
 Humidity:58%
 Test Distance:5.850m [K=1.0000]
 Remarks:

UTILIZATION FACTORS TABLE

Test:U:35.60V I:0.5000A P:17.80W PF:1.000 Freq:0Hz Lamp Flux:1510.45x1 lm		
NAME: T150-18W-TW-965-60	TYPE:Downlight	SERIAL No.:
SPEC.:6500K	DIM.: φ160mm*H100mm	
MFR.: NEKO LIGHTING AG		

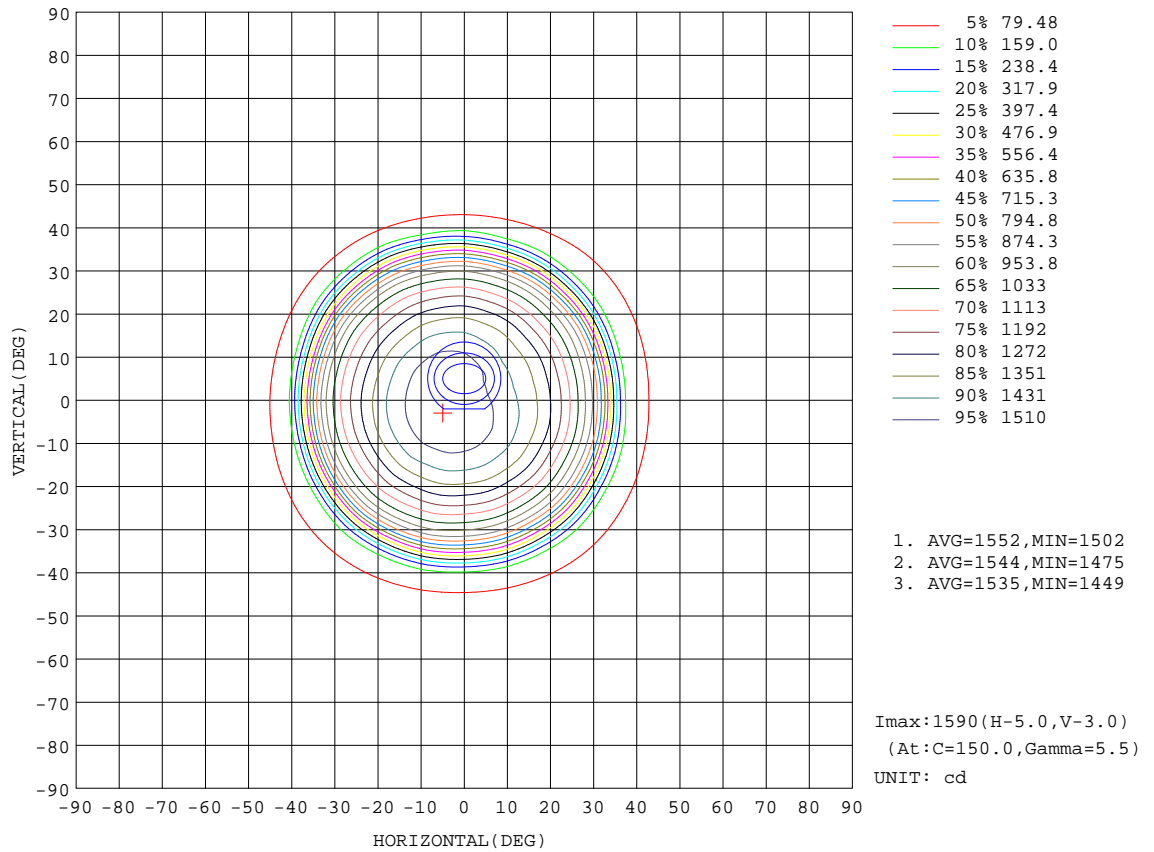
REFLECTANCE										
Ceiling	0.8	0.8	0.8	0.7	0.7	0.7	0.5	0.5	0.5	0
Walls	0.7	0.5	0.3	0.7	0.5	0.3	0.7	0.5	0.3	0
Working plane	0.2	0.2	0.2	0.2	0.2	0.2	0.2	0.2	0.2	0
ROOM INDEX	UTILIZATION FACTORS(PERCENT) $k(RI) \times RCR = 5$									
k = 0.60	87	81	77	87	81	77	86	81	77	74
0.80	95	89	85	94	89	85	93	88	85	81
1.00	99	94	90	99	93	90	97	93	89	85
1.25	103	98	95	102	98	94	100	96	94	89
1.50	106	101	98	105	101	98	103	99	96	92
2.00	109	105	101	107	104	101	105	102	99	94
2.50	110	107	104	109	105	103	106	103	101	95
3.00	112	109	106	110	107	105	107	104	103	96
4.00	114	111	109	112	110	108	108	106	105	98
5.00	115	113	111	113	111	109	109	108	106	99
ROOM INDEX	UF(total)									Direct
According to DIN EN 13032-2 2004			Suspended				SHRNOM = 1.25			

C Range: 0 - 360DEG
 C Interval: 15.0DEG
 Test Speed: HIGH
 Temperature:25.3DEG
 Operators:Jason
 Test Date:2020-08-29

γ Range: 0 - 90DEG
 γ Interval: 0.5DEG
 Test System:EVERFINE GO-2000B_V1 SYSTEM V2.0.362
 Humidity:58%
 Test Distance:5.850m [K=1.0000]
 Remarks:

ISOCANDELA DIAGRAM

Test:U:35.60V I:0.5000A P:17.80W PF:1.000 Freq:0Hz Lamp Flux:1510.45x1 lm		
NAME: T150-18W-TW-965-60	TYPE:Downlight	SERIAL No.:
SPEC.:6500K	DIM.: φ160mm*H100mm	
MFR.: NEKO LIGHTING AG		



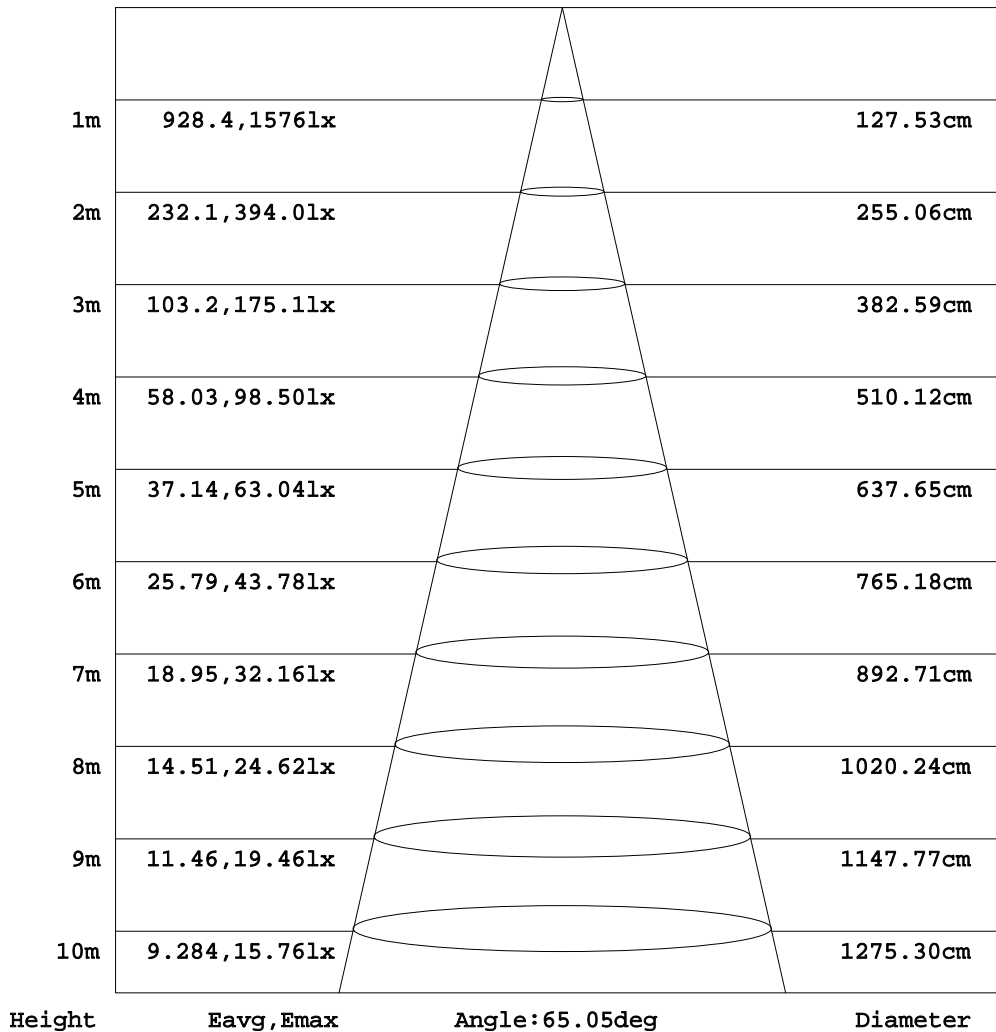
C Range: 0 - 360DEG
C Interval: 15.0DEG
Test Speed: HIGH
Temperature:25.3DEG
Operators:Jason
Test Date:2020-08-29

γ Range: 0 - 90DEG
γ Interval: 0.5DEG
Test System:EVERFINE GO-2000B_V1 SYSTEM V2.0.362
Humidity:58%
Test Distance:5.850m [K=1.0000]
Remarks:

AAI Figure

Test:U:35.60V I:0.5000A P:17.80W PF:1.000 Freq:0Hz Lamp Flux:1510.45x1 lm		
NAME: T150-18W-TW-965-60	TYPE:Downlight	SERIAL No.:
SPEC.:6500K	DIM.: φ160mm*H100mm	
MFR.: NEKO LIGHTING AG		

Flux out:1230 lm



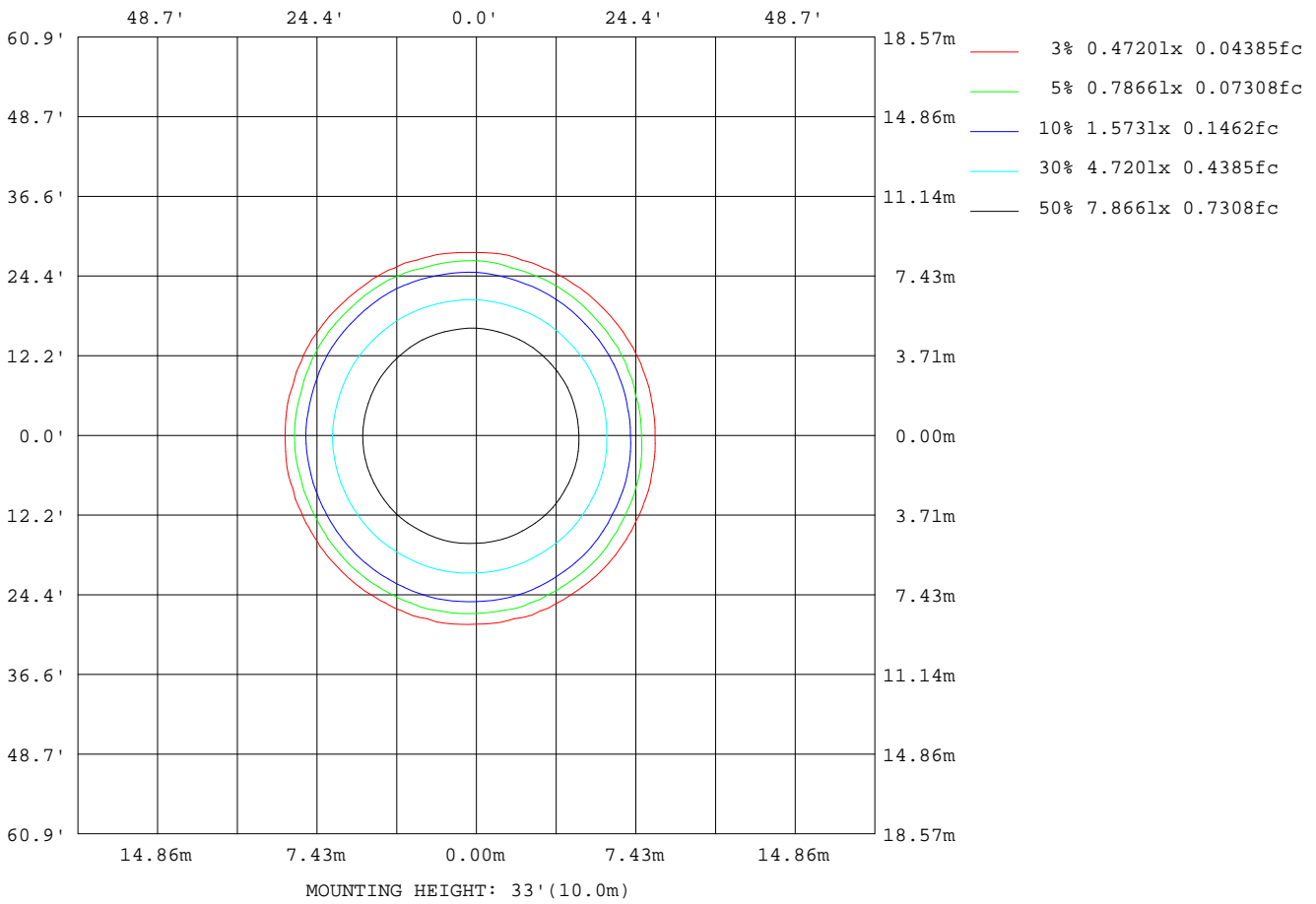
Note:The Curves indicate the illuminated area and the average illumination when the luminaire is at different distance.

C Range: 0 - 360DEG
C Interval: 15.0DEG
Test Speed: HIGH
Temperature:25.3DEG
Operators:Jason
Test Date:2020-08-29

γ Range: 0 - 90DEG
γ Interval: 0.5DEG
Test System:EVERFINE GO-2000B_V1 SYSTEM V2.0.362
Humidity:58%
Test Distance:5.850m [K=1.0000]
Remarks:

ISOLUX DIAGRAM

Test:U:35.60V I:0.5000A P:17.80W PF:1.000 Freq:0Hz Lamp Flux:1510.45x1 lm		
NAME: T150-18W-TW-965-60	TYPE:Downlight	SERIAL No.:
SPEC.:6500K	DIM.: φ160mm*H100mm	
MFR.: NEKO LIGHTING AG		



C Range: 0 - 360DEG
 C Interval: 15.0DEG
 Test Speed: HIGH
 Temperature:25.3DEG
 Operators:Jason
 Test Date:2020-08-29

γ Range: 0 - 90DEG
 γ Interval: 0.5DEG
 Test System:EVERFINE GO-2000B_V1 SYSTEM V2.0.362
 Humidity:58%
 Test Distance:5.850m [K=1.0000]
 Remarks:

LED Avg.L Report

Test:U:35.60V I:0.5000A P:17.80W PF:1.000 Freq:0Hz Lamp Flux:1510.45x1 lm		
NAME: T150-18W-TW-965-60	TYPE:Downlight	SERIAL No.:
SPEC.:6500K	DIM.: φ160mm*H100mm	
MFR.: NEKO LIGHTING AG		

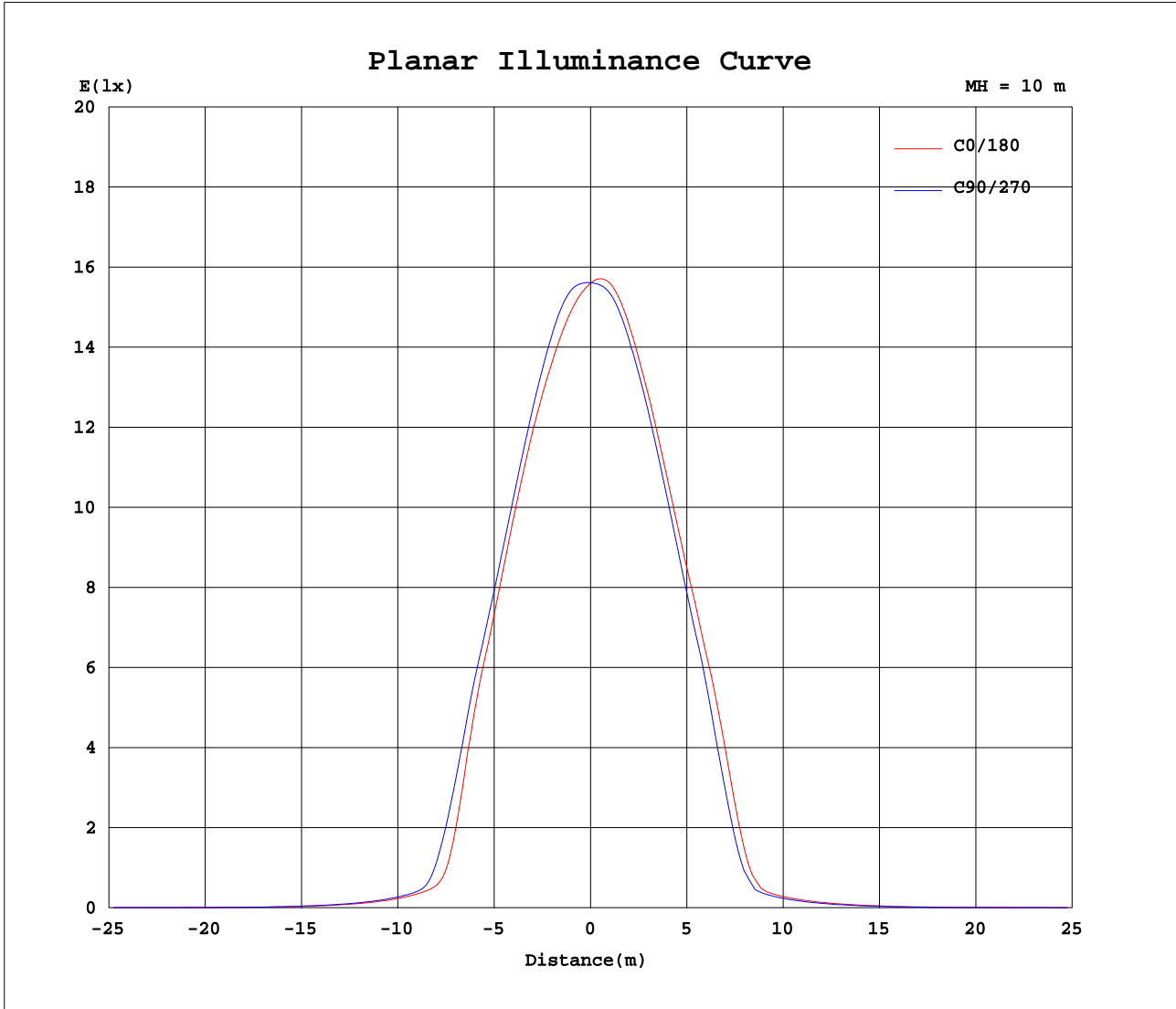
AvgL	cd/m2
L_0~180(65)av	1151
L_0~180(75)av	545
L_0~180(85)av	54
L_90~270(65)av	1011
L_90~270(75)av	486
L_90~270(85)av	51
L_45(65)av	1070
L_45(75)av	503
L_45(85)av	53

Standard: GB/T 29293-2012

C Range: 0 - 360DEG
C Interval: 15.0DEG
Test Speed: HIGH
Temperature:25.3DEG
Operators:Jason
Test Date:2020-08-29

γ Range: 0 - 90DEG
γ Interval: 0.5DEG
Test System:EVERFINE GO-2000B_V1 SYSTEM V2.0.362
Humidity:58%
Test Distance:5.850m [K=1.0000]
Remarks:

Planar Illuminance Curve



C Range: 0 - 360DEG
 C Interval: 15.0DEG
 Test Speed: HIGH
 Temperature: 25.3DEG
 Operators: Jason
 Test Date: 2020-08-29

γ Range: 0 - 90DEG
 γ Interval: 0.5DEG
 Test System: EVERFINE GO-2000B_V1 SYSTEM V2.0.362
 Humidity: 58%
 Test Distance: 5.850m [K=1.0000]
 Remarks:

LUMINOUS DISTRIBUTION INTENSITY DATA

Test:U:35.60V I:0.5000A P:17.80W PF:1.000 Freq:0Hz Lamp Flux:1510.45x1 lm		
NAME: T150-18W-TW-965-60	TYPE:Downlight	SERIAL No.:
SPEC.:6500K	DIM.: φ160mm*H100mm	
MFR.: NEKO LIGHTING AG		

Table--1

UNIT: cd

C(DEG) γ (DEG)	0	15	30	45	60	75	90	105	120	135	150	165	180	195	210	225	240	255	270
0	1561	1561	1561	1561	1561	1561	1561	1561	1561	1561	1561	1561	1561	1561	1561	1561	1561	1561	1561
5	1522	1526	1533	1542	1550	1559	1566	1573	1579	1588	1588	1588	1585	1585	1585	1582	1578	1570	1560
10	1464	1475	1487	1501	1513	1526	1535	1546	1552	1566	1563	1564	1560	1558	1561	1556	1550	1537	1523
15	1388	1401	1412	1427	1435	1448	1455	1467	1473	1490	1491	1492	1488	1482	1482	1473	1468	1455	1445
20	1272	1285	1294	1309	1314	1327	1334	1351	1359	1379	1383	1387	1385	1373	1368	1355	1350	1335	1326
25	1092	1107	1116	1133	1142	1158	1168	1191	1202	1224	1229	1238	1239	1225	1219	1200	1191	1171	1160
30	857	873	882	907	919	944	959	989	1006	1033	1039	1050	1054	1038	1030	1006	992	965	949
35	357	397	422	478	508	559	580	626	641	686	691	712	719	689	676	632	614	564	533
40	101	104	108	116	124	147	148	169	173	183	174	176	185	177	179	162	159	126	128
45	66.2	67.8	69.5	72.3	74.3	76.1	76.8	78.7	79.7	80.4	80.7	80.7	80.0	76.4	73.4	70.7	69.4	67.8	67.3
50	42.3	43.7	44.6	46.8	48.3	49.9	50.4	52.2	52.7	53.7	53.9	54.1	53.5	50.3	48.3	45.8	44.9	43.5	43.6
55	25.0	25.9	26.4	27.8	28.6	30.0	30.5	32.1	32.8	33.5	33.4	33.6	33.2	30.9	29.5	27.6	26.7	25.7	25.9
60	13.6	13.6	13.5	13.7	13.8	14.6	15.2	16.5	17.0	17.8	17.8	17.9	17.8	16.2	15.1	13.6	13.0	12.2	12.3
65	8.95	8.96	8.82	8.91	8.91	9.15	9.20	9.59	9.79	10.2	10.4	10.7	10.6	9.71	9.10	8.51	8.29	7.98	7.97
70	5.26	5.32	5.26	5.35	5.39	5.62	5.70	5.96	6.06	6.31	6.48	6.73	6.71	6.12	5.70	5.31	5.11	4.89	4.77
75	2.14	2.22	2.27	2.39	2.50	2.77	2.86	3.05	3.08	3.20	3.29	3.47	3.53	3.18	2.96	2.67	2.54	2.30	2.20
80	0.19	0.19	0.24	0.36	0.46	0.58	0.66	0.77	0.78	0.85	0.88	0.97	1.03	0.86	0.75	0.60	0.50	0.38	0.32
85	0.11	0.11	0.11	0.10	0.11	0.10	0.11	0.10	0.11	0.10	0.12	0.10	0.08	0.10	0.08	0.09	0.07	0.09	0.06
90	0.10	0.10	0.10	0.10	0.10	0.10	0.10	0.10	0.10	0.10	0.10	0.10	0.06	0.07	0.06	0.06	0.06	0.06	0.06

C Range: 0 - 360DEG
 C Interval: 15.0DEG
 Test Speed: HIGH
 Temperature: 25.3DEG
 Operators: Jason
 Test Date: 2020-08-29

γ Range: 0 - 90DEG
 γ Interval: 0.5DEG
 Test System: EVERFINE GO-2000B_V1 SYSTEM V2.0.362
 Humidity: 58%
 Test Distance: 5.850m [K=1.0000]
 Remarks:

LUMINOUS DISTRIBUTION INTENSITY DATA

Test:U:35.60V I:0.5000A P:17.80W PF:1.000 Freq:0Hz Lamp Flux:1510.45x1 lm		
NAME: T150-18W-TW-965-60	TYPE:Downlight	SERIAL No.:
SPEC.:6500K	DIM.: φ160mm*H100mm	
MFR.: NEKO LIGHTING AG		

Table--2

UNIT: cd

C(DEG) γ (DEG)	285	300	315	330	345												
0	1561	1561	1561	1561	1561												
5	1547	1535	1522	1517	1516												
10	1502	1484	1466	1458	1455												
15	1423	1407	1391	1384	1380												
20	1305	1294	1278	1273	1266												
25	1133	1120	1103	1098	1089												
30	913	897	875	871	858												
35	471	434	390	378	358												
40	107	104	103	103	102												
45	66.3	66.2	67.6	67.8	67.4												
50	43.0	43.2	44.2	44.3	43.7												
55	25.6	26.1	26.7	26.7	26.2												
60	12.3	12.7	13.3	14.0	14.0												
65	7.97	8.27	8.73	9.22	9.28												
70	4.69	4.84	5.16	5.45	5.51												
75	2.06	2.08	2.20	2.33	2.33												
80	0.26	0.23	0.25	0.24	0.22												
85	0.09	0.06	0.08	0.06	0.08												
90	0.06	0.06	0.06	0.06	0.06												

C Range: 0 - 360DEG
 C Interval: 15.0DEG
 Test Speed: HIGH
 Temperature:25.3DEG
 Operators:Jason
 Test Date:2020-08-29

γ Range: 0 - 90DEG
 γ Interval: 0.5DEG
 Test System:EVERFINE GO-2000B_V1 SYSTEM V2.0.362
 Humidity:58%
 Test Distance:5.850m [K=1.0000]
 Remarks: