

T150-18W-TW-927-60



Light Output Ratio:	100.0%	
Luminaire Power:	17.33 W	
SHR Nominal:	0.75	Calculated using the TM5
SHR Maximum:	0.95	fine grid method.

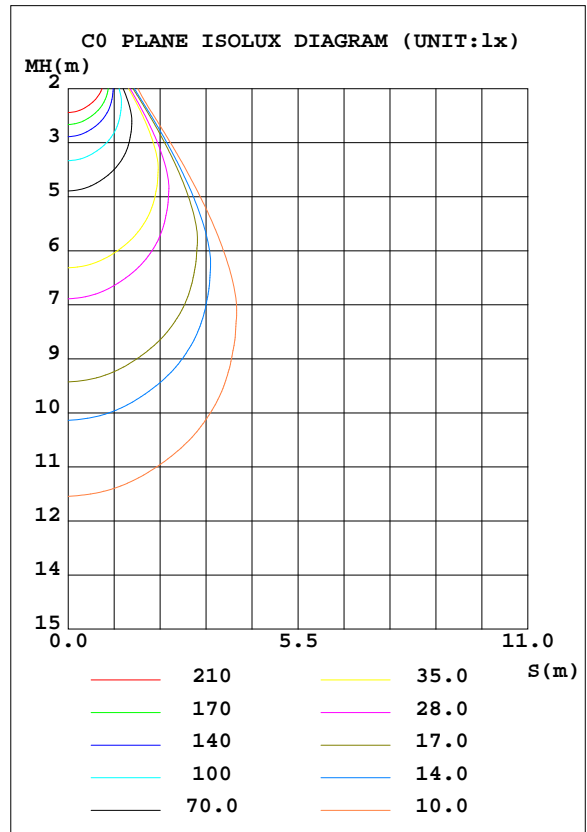
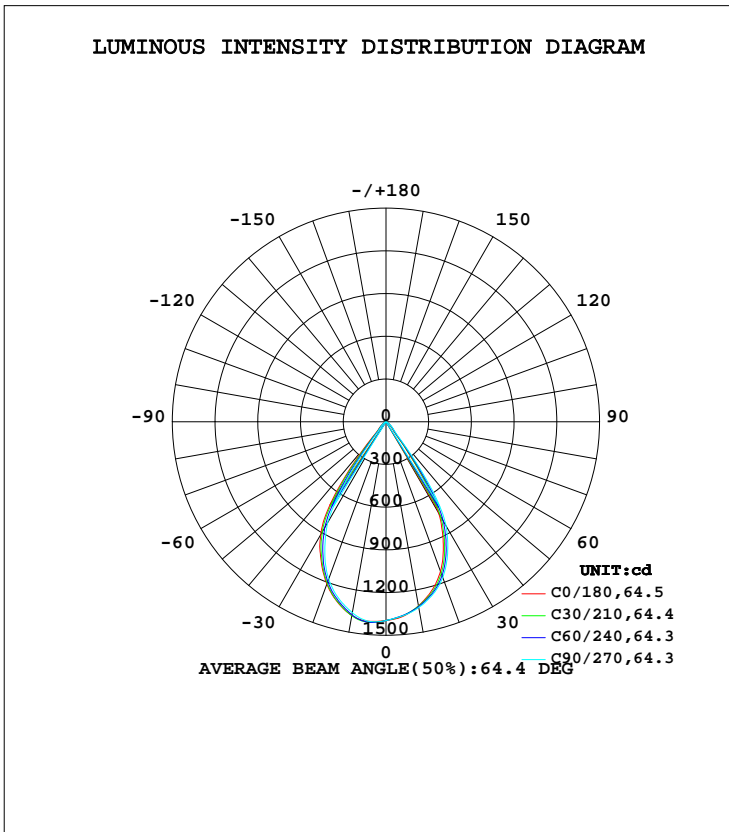
C Range: 0 - 360DEG
 C Interval: 15.0DEG
 Test Speed: HIGH
 Temperature: 25.3DEG
 Operators: Jason
 Test Date: 2020-08-29

γ Range: 0 - 90DEG
 γ Interval: 0.5DEG
 Test System: EVERFINE GO-2000B_V1 SYSTEM V2.0.362
 Humidity: 58%
 Test Distance: 5.850m [K=1.0000]
 Remarks:

LUMINAIRE PHOTOMETRIC TEST REPORT

Test:U:34.67V I:0.5000A P:17.33W PF:1.000 Freq:0Hz Lamp Flux:1324.35x1 lm		
NAME: T150-18W-TW-927-60	TYPE:Downlight	SERIAL No.:
SPEC.:2700K	DIM.: φ160mm*H100mm	
MFR.: NEKO LIGHTING AG		

DATA OF LAMP		PHOTOMETRIC DATA Eff: 76.40 lm/W			
MODEL	BRIDGELUX-2700K	I _{max} (cd)	1416	S/MH(C0/180)	0.99
NOMINAL POWER(W)	18	LOR(%)	100.0	S/MH(C90/270)	0.93
RATED VOLTAGE(V)	36	TOTAL FLUX(lm)	1324.4	η UP, DN(C0-180)	0.0,50.4
NOMINAL FLUX(lm)	1324.35	CIE CLASS	DIRECT	η UP, DN(C180-360)	0.0,49.6
LAMPS INSIDE	1	η up(%)	0.0	CIBSE SHR NOM	0.75
TEST VOLTAGE(V)	34.67	η down(%)	100.0	CIBSE SHR MAX	0.95



C Range: 0 - 360DEG
 C Interval: 15.0DEG
 Test Speed: HIGH
 Temperature:25.3DEG
 Operators:Jason
 Test Date:2020-08-29

γ Range: 0 - 90DEG
 γ Interval: 0.5DEG
 Test System:EVERFINE GO-2000B_V1 SYSTEM V2.0.362
 Humidity:58%
 Test Distance:5.850m [K=1.0000]
 Remarks:

ZONAL FLUX DIAGRAM

ZONAL FLUX DIAGRAM:

γ	C0	C45	C90	C135	C180	C225	C270	C315	γ	Φ zone	Φ total	%lum,lamp
10	1313	1317	1325	1374	1382	1379	1362	1322	0- 10	131.3	131.3	9.91,9.91
20	1119	1145	1165	1209	1214	1198	1176	1132	10- 20	357.0	488.2	36.9,36.9
30	738.0	791.2	843.1	902.3	916.1	873.5	820.8	762.9	20- 30	464.9	953.1	72,72
40	87.15	101.8	129.1	177.8	208.0	121.0	87.28	87.61	30- 40	285.1	1238	93.5,93.5
50	35.75	42.20	48.39	50.29	49.53	39.55	34.08	36.09	40- 50	52.29	1290	97.4,97.4
60	11.37	12.32	15.33	17.12	16.68	11.21	9.428	11.16	50- 60	23.06	1314	99.2,99.2
70	4.266	4.830	5.609	5.867	6.149	4.382	3.489	4.151	60- 70	8.104	1322	99.8,99.8
80	0.1430	0.4043	0.9406	0.9370	1.075	0.4277	0.1087	0.1369	70- 80	2.544	1324	100,100
90	0.0963	0.0917	0.0937	0.0920	0.0591	0.0590	0.0610	0.0548	80- 90	0.1541	1324	100,100
100									90-100			
110									100-110			
120									110-120			
130									120-130			
140									130-140			
150									140-150			
160									150-160			
170									160-170			
180									170-180			
DEG	LUMINOUS INTENSITY:cd									UNIT:lm		

Conical surface Flux(90deg): 1269.3 lm

%lum = 95.8%
%lamp = 95.8%

Conical surface Flux(120deg): 1313.5 lm

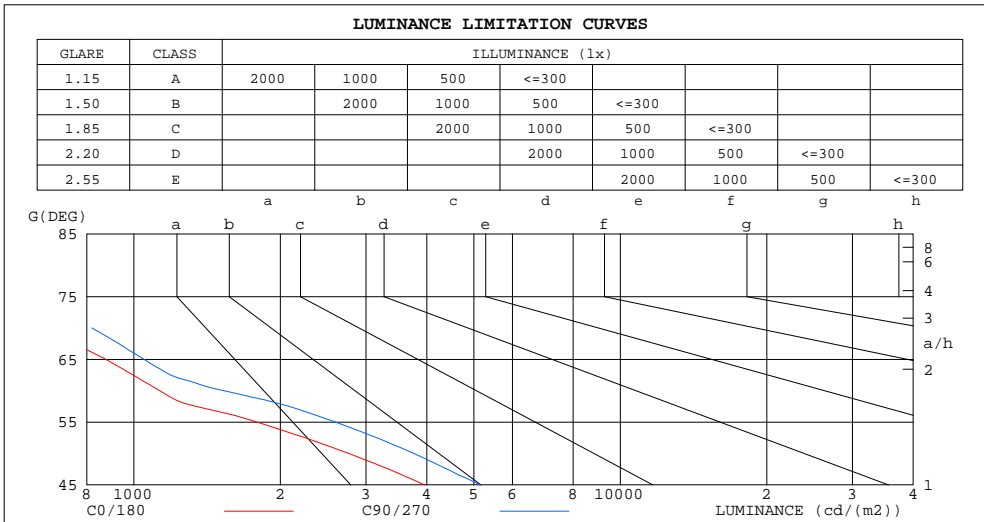
%lum = 99.2%
%lamp = 99.2%

C Range: 0 - 360DEG
C Interval: 15.0DEG
Test Speed: HIGH
Temperature:25.3DEG
Operators:Jason
Test Date:2020-08-29

γ Range: 0 - 90DEG
 γ Interval: 0.5DEG
Test System:EVERFINE GO-2000B_V1 SYSTEM V2.0.362
Humidity:58%
Test Distance:5.850m [K=1.0000]
Remarks:

LUMINANCE LIMITATION CURVES

Test:U:34.67V I:0.5000A P:17.33W PF:1.000 Freq:0Hz Lamp Flux:1324.35x1 lm		
NAME: T150-18W-TW-927-60	TYPE:Downlight	SERIAL No.:
SPEC.:2700K	DIM.: φ160mm*H100mm	
MFR.: NEKO LIGHTING AG		



LUMINANCE cd/(m2)		
G(DEG)	C0/180	C90/270
85	60	63
80	41	271
75	311	578
70	620	819
65	875	1049
60	1130	1531
55	1791	2596
50	2764	3760
45	3961	5145

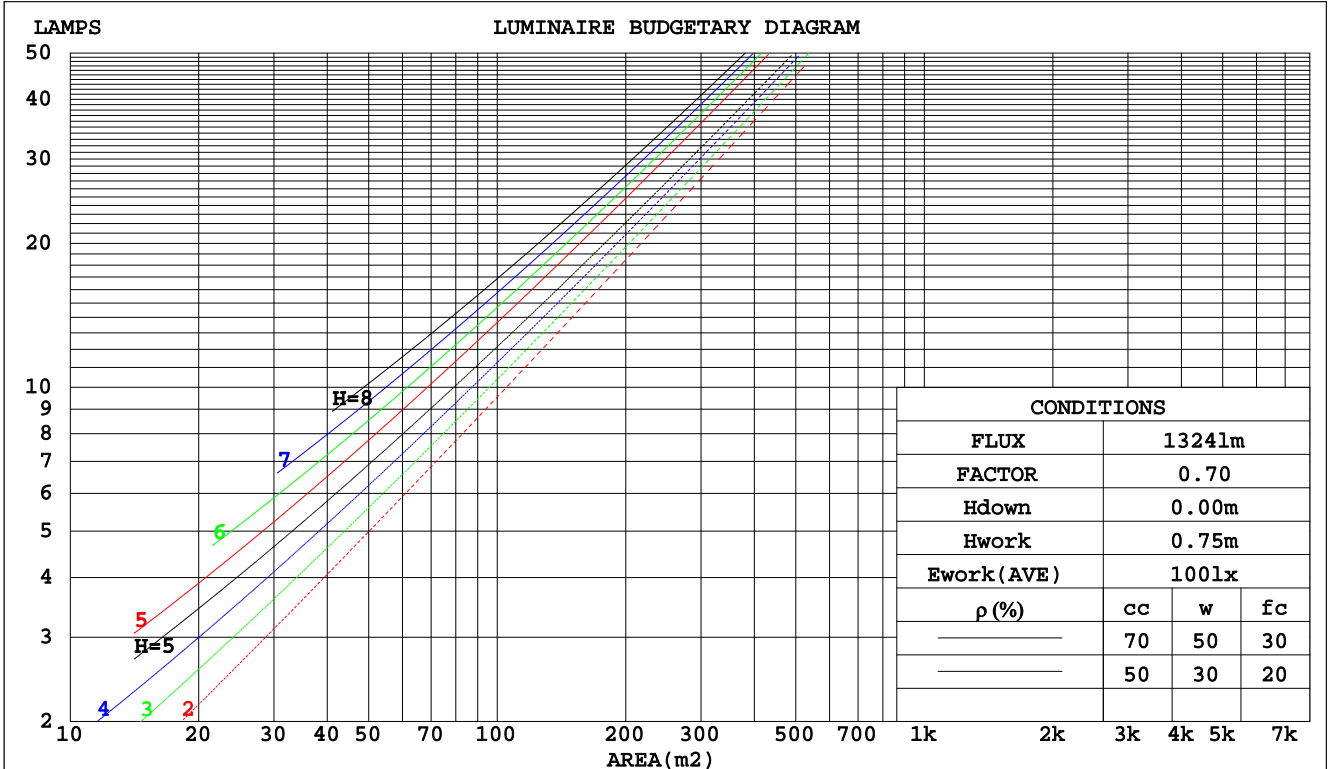
C Range: 0 - 360DEG
 C Interval: 15.0DEG
 Test Speed: HIGH
 Temperature:25.3DEG
 Operators:Jason
 Test Date:2020-08-29

γ Range: 0 - 90DEG
 γ Interval: 0.5DEG
 Test System:EVERFINE GO-2000B_V1 SYSTEM V2.0.362
 Humidity:58%
 Test Distance:5.850m [K=1.0000]
 Remarks:

CU AND LUMINAIRE BUDGETARY ESTIMATE DIAGRAM

Test:U:34.67V I:0.5000A P:17.33W PF:1.000 Freq:0Hz Lamp Flux:1324.35x1 lm		
NAME: T150-18W-TW-927-60	TYPE:Downlight	SERIAL No.:
SPEC.:2700K	DIM.: φ160mm*H100mm	
MFR.: NEKO LIGHTING AG		

pcc	80%			70%			50%			30%			10%			0
ρw	50%	30%	10%	50%	30%	10%	50%	30%	10%	50%	30%	10%	50%	30%	10%	0
ρfc	20%			20%			20%			20%			20%			0
RCR	RCR:Room Cavity Ratio															
	Coefficients of Utilization(CU)															
0.0	1.19	1.19	1.19	1.16	1.16	1.16	1.11	1.11	1.11	1.06	1.06	1.06	1.02	1.02	1.02	1.00
1.0	1.11	1.08	1.06	1.09	1.06	1.04	1.04	1.03	1.01	1.01	.99	.98	.97	.96	.95	.93
2.0	1.03	.99	.95	1.01	.98	.94	.98	.95	.92	.95	.93	.90	.92	.90	.88	.87
3.0	.96	.91	.87	.95	.90	.86	.92	.88	.85	.89	.86	.84	.87	.85	.82	.81
4.0	.90	.84	.80	.88	.83	.79	.86	.82	.78	.84	.80	.77	.82	.79	.77	.75
5.0	.84	.78	.74	.83	.77	.73	.81	.76	.73	.79	.75	.72	.78	.74	.71	.70
6.0	.79	.73	.68	.78	.72	.68	.76	.71	.68	.75	.70	.67	.74	.70	.67	.65
7.0	.74	.68	.64	.73	.67	.63	.72	.67	.63	.71	.66	.63	.70	.66	.62	.61
8.0	.70	.64	.59	.69	.63	.59	.68	.63	.59	.67	.62	.59	.66	.62	.59	.57
9.0	.66	.60	.56	.65	.59	.56	.64	.59	.55	.63	.59	.55	.62	.58	.55	.54
10.0	.62	.56	.52	.62	.56	.52	.61	.56	.52	.60	.55	.52	.59	.55	.52	.51



C Range: 0 - 360DEG
 C Interval: 15.0DEG
 Test Speed: HIGH
 Temperature:25.3DEG
 Operators:Jason
 Test Date:2020-08-29

γ Range: 0 - 90DEG
 γ Interval: 0.5DEG
 Test System:EVERFINE GO-2000B_V1 SYSTEM V2.0.362
 Humidity:58%
 Test Distance:5.850m [K=1.0000]
 Remarks:

WEC AND CCEC

Test:U:34.67V I:0.5000A P:17.33W PF:1.000 Freq:0Hz Lamp Flux:1324.35x1 lm		
NAME: T150-18W-TW-927-60	TYPE:Downlight	SERIAL No.:
SPEC.:2700K	DIM.: φ160mm*H100mm	
MFR.: NEKO LIGHTING AG		

ρcc	80%			70%			50%			30%			10%			0
ρw	50%	30%	10%	50%	30%	10%	50%	30%	10%	50%	30%	10%	50%	30%	10%	0
ρfc	20%			20%			20%			20%			20%			0
RCR	RCR:Room Cavity Ratio						Wall Exitance Coefficients(WEC)									
0.0																
1.0	.179	.102	.032	.172	.098	.031	.160	.092	.029	.148	.086	.027	.138	.080	.026	
2.0	.172	.094	.029	.166	.092	.028	.156	.087	.027	.146	.082	.026	.137	.077	.024	
3.0	.164	.087	.026	.159	.085	.026	.150	.081	.025	.142	.078	.024	.134	.074	.023	
4.0	.156	.081	.024	.152	.080	.024	.144	.077	.023	.137	.074	.022	.130	.071	.022	
5.0	.149	.076	.022	.145	.075	.022	.139	.072	.021	.132	.070	.021	.126	.067	.020	
6.0	.142	.071	.020	.139	.070	.020	.133	.068	.020	.128	.066	.019	.122	.064	.019	
7.0	.136	.067	.019	.133	.066	.019	.128	.065	.019	.123	.063	.018	.118	.061	.018	
8.0	.130	.064	.018	.128	.063	.018	.123	.061	.018	.119	.060	.017	.114	.059	.017	
9.0	.125	.060	.017	.123	.060	.017	.118	.059	.017	.114	.057	.016	.111	.056	.016	
10.0	.120	.057	.016	.118	.057	.016	.114	.056	.016	.110	.055	.016	.107	.054	.015	

ρcc	80%			70%			50%			30%			10%			0
ρw	50%	30%	10%	50%	30%	10%	50%	30%	10%	50%	30%	10%	50%	30%	10%	0
ρfc	20%			20%			20%			20%			20%			0
RCR	RCR:Room Cavity Ratio						Ceiling Cavity Exitance Coefficients(CCEC)									
0.0	.190	.190	.190	.163	.163	.163	.111	.111	.111	.064	.064	.064	.020	.020	.020	
1.0	.171	.157	.145	.147	.135	.125	.100	.093	.086	.058	.054	.050	.018	.017	.016	
2.0	.156	.132	.113	.134	.114	.097	.092	.079	.068	.053	.046	.040	.017	.015	.013	
3.0	.144	.114	.089	.124	.098	.077	.085	.068	.054	.049	.040	.032	.016	.013	.010	
4.0	.134	.099	.072	.115	.085	.063	.079	.060	.044	.046	.035	.026	.015	.011	.009	
5.0	.125	.087	.059	.108	.076	.052	.074	.053	.036	.043	.031	.022	.014	.010	.007	
6.0	.118	.078	.049	.102	.068	.043	.070	.047	.030	.041	.028	.018	.013	.009	.006	
7.0	.112	.071	.042	.096	.061	.036	.066	.043	.026	.039	.025	.015	.012	.008	.005	
8.0	.106	.064	.036	.091	.056	.031	.063	.039	.022	.037	.023	.013	.012	.008	.004	
9.0	.101	.059	.031	.087	.051	.027	.060	.036	.019	.035	.021	.011	.011	.007	.004	
10.0	.097	.055	.027	.083	.048	.024	.058	.034	.017	.034	.020	.010	.011	.007	.003	

C Range: 0 - 360DEG
 C Interval: 15.0DEG
 Test Speed: HIGH
 Temperature:25.3DEG
 Operators:Jason
 Test Date:2020-08-29

γ Range: 0 - 90DEG
 γ Interval: 0.5DEG
 Test System:EVERFINE GO-2000B_V1 SYSTEM V2.0.362
 Humidity:58%
 Test Distance:5.850m [K=1.0000]
 Remarks:

UGR(Unified Glare Rating) Table

Test:U:34.67V I:0.5000A P:17.33W PF:1.000 Freq:0Hz Lamp Flux:1324.35x1 lm		
NAME: T150-18W-TW-927-60	TYPE:Downlight	SERIAL No.:
SPEC.:2700K	DIM.: φ160mm*H100mm	
MFR.: NEKO LIGHTING AG		

ceiling/cavity	0.7	0.7	0.5	0.5	0.3	0.7	0.7	0.5	0.5	0.3
walls	0.5	0.3	0.5	0.3	0.3	0.5	0.3	0.5	0.3	0.3
working plane	0.2	0.2	0.2	0.2	0.2	0.2	0.2	0.2	0.2	0.2
Room dimensions	Viewed crosswise					Viewed endwise				
x = 2H y = 2H	13.1	14.1	13.3	14.2	14.4	14.3	15.3	14.6	15.5	15.6
3H	13.0	13.9	13.2	14.1	14.3	14.2	15.1	14.5	15.3	15.5
4H	12.9	13.7	13.2	14.0	14.2	14.2	15.0	14.4	15.2	15.4
6H	12.8	13.6	13.1	13.8	14.1	14.1	14.8	14.4	15.1	15.3
8H	12.8	13.5	13.1	13.8	14.0	14.0	14.8	14.3	15.0	15.3
12H	12.7	13.4	13.0	13.7	14.0	14.0	14.7	14.3	15.0	15.2
4H 2H	12.9	13.7	13.2	14.0	14.2	14.1	15.0	14.4	15.2	15.4
3H	12.8	13.5	13.1	13.8	14.0	14.0	14.7	14.3	15.0	15.3
4H	12.7	13.4	13.1	13.7	14.0	13.9	14.6	14.3	14.9	15.2
6H	12.6	13.2	13.0	13.5	13.9	13.9	14.4	14.2	14.8	15.1
8H	12.6	13.1	13.0	13.4	13.8	13.8	14.3	14.2	14.7	15.1
12H	12.5	13.0	12.9	13.4	13.8	13.8	14.2	14.2	14.6	15.0
8H 4H	12.6	13.1	13.0	13.5	13.8	13.8	14.3	14.2	14.7	15.1
6H	12.5	12.9	12.9	13.3	13.7	13.7	14.1	14.1	14.5	15.0
8H	12.4	12.8	12.9	13.2	13.7	13.7	14.0	14.1	14.5	14.9
12H	12.4	12.7	12.8	13.1	13.6	13.6	13.9	14.1	14.4	14.8
12H 4H	12.5	13.0	12.9	13.4	13.8	13.8	14.2	14.2	14.6	15.0
6H	12.4	12.8	12.9	13.2	13.7	13.7	14.0	14.1	14.5	14.9
8H	12.4	12.7	12.8	13.1	13.6	13.6	13.9	14.1	14.4	14.8
Variations with the observer position at spacings:										
S = 1.0H	+ 3.2 / - 5.0					+ 4.3 / - 5.6				
1.5H	+ 4.5 / - 3.1					+ 6.2 / - 4.2				
2.0H	+ 3.5 / - 3.8					+ 3.6 / - 4.4				

CIE Pub.117, 1324 lm Total Lamp Luminous Flux Correct (8log(F/F0) = 1.0)

C Range: 0 - 360DEG
 C Interval: 15.0DEG
 Test Speed: HIGH
 Temperature:25.3DEG
 Operators:Jason
 Test Date:2020-08-29

γ Range: 0 - 90DEG
 γ Interval: 0.5DEG
 Test System:EVERFINE GO-2000B_V1 SYSTEM V2.0.362
 Humidity:58%
 Test Distance:5.850m [K=1.0000]
 Remarks:

UTILIZATION FACTORS TABLE

Test:U:34.67V I:0.5000A P:17.33W PF:1.000 Freq:0Hz Lamp Flux:1324.35x1 lm		
NAME: T150-18W-TW-927-60	TYPE:Downlight	SERIAL No.:
SPEC.:2700K	DIM.: φ160mm*H100mm	
MFR.: NEKO LIGHTING AG		

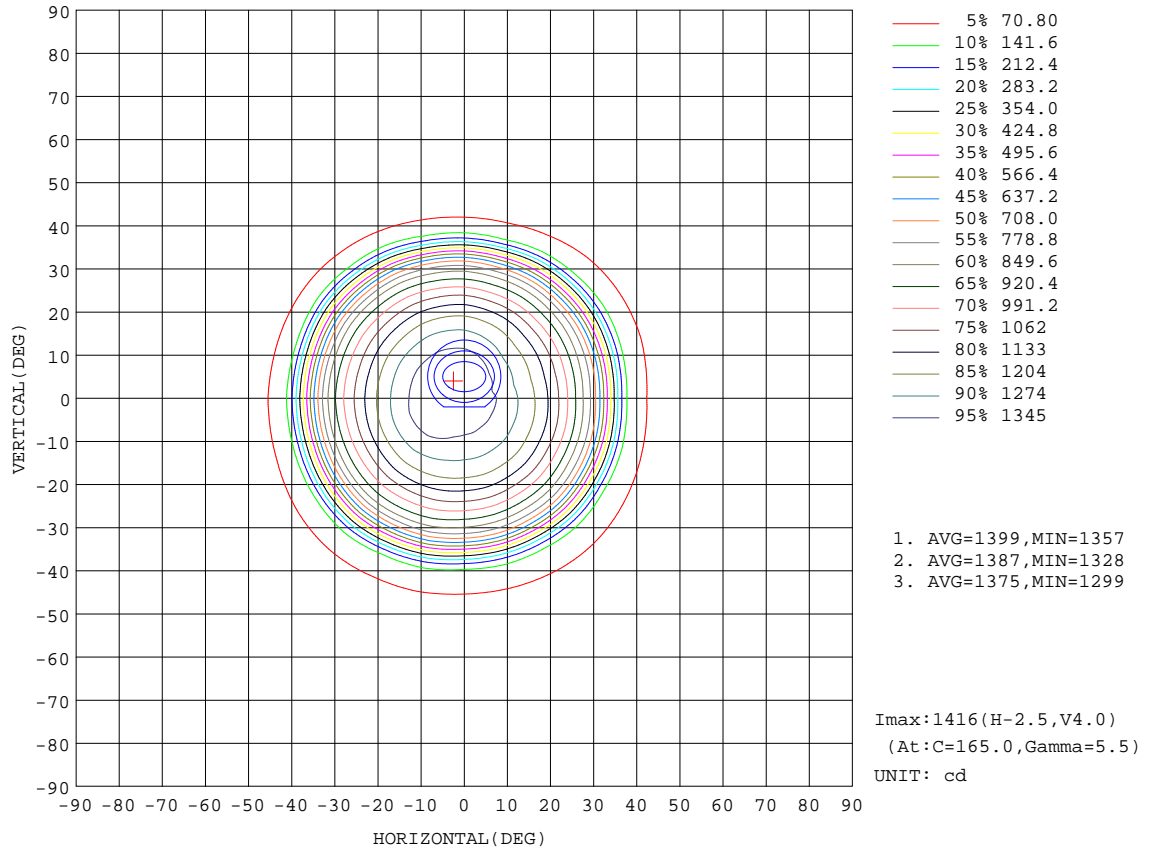
REFLECTANCE										
Ceiling	0.8	0.8	0.8	0.7	0.7	0.7	0.5	0.5	0.5	0
Walls	0.7	0.5	0.3	0.7	0.5	0.3	0.7	0.5	0.3	0
Working plane	0.2	0.2	0.2	0.2	0.2	0.2	0.2	0.2	0.2	0
ROOM INDEX	UTILIZATION FACTORS(PERCENT) $k(RI) \times RCR = 5$									
k = 0.60	87	81	77	87	81	77	86	81	77	74
0.80	95	89	85	94	89	85	93	88	85	81
1.00	99	94	90	98	93	90	97	93	89	85
1.25	103	98	95	102	98	94	100	96	94	89
1.50	106	101	98	105	101	98	103	99	96	92
2.00	109	105	101	107	103	101	105	102	99	94
2.50	110	107	104	109	105	103	106	103	101	95
3.00	112	108	106	110	107	105	107	104	102	96
4.00	114	111	109	112	110	108	108	106	105	98
5.00	115	113	111	113	111	109	109	108	106	99
ROOM INDEX	UF(total)									Direct
According to DIN EN 13032-2 2004			Suspended				SHRNOM = 1.25			

C Range: 0 - 360DEG
 C Interval: 15.0DEG
 Test Speed: HIGH
 Temperature:25.3DEG
 Operators:Jason
 Test Date:2020-08-29

γ Range: 0 - 90DEG
 γ Interval: 0.5DEG
 Test System:EVERFINE GO-2000B_V1 SYSTEM V2.0.362
 Humidity:58%
 Test Distance:5.850m [K=1.0000]
 Remarks:

ISOCANDELA DIAGRAM

Test:U:34.67V I:0.5000A P:17.33W PF:1.000 Freq:0Hz Lamp Flux:1324.35x1 lm		
NAME: T150-18W-TW-927-60	TYPE:Downlight	SERIAL No.:
SPEC.:2700K	DIM.: φ160mm*H100mm	
MFR.: NEKO LIGHTING AG		



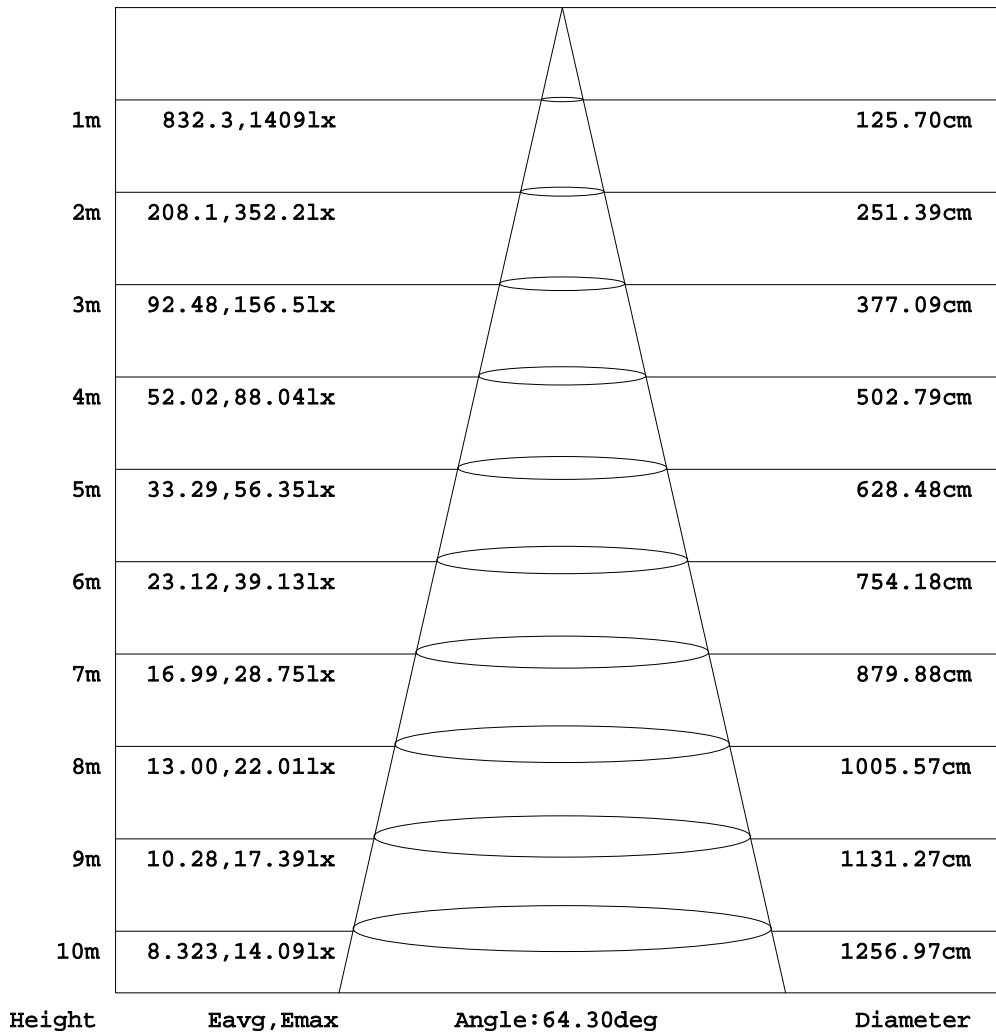
C Range: 0 - 360DEG
 C Interval: 15.0DEG
 Test Speed: HIGH
 Temperature:25.3DEG
 Operators:Jason
 Test Date:2020-08-29

γ Range: 0 - 90DEG
 γ Interval: 0.5DEG
 Test System:EVERFINE GO-2000B_V1 SYSTEM V2.0.362
 Humidity:58%
 Test Distance:5.850m [K=1.0000]
 Remarks:

AAI Figure

Test:U:34.67V I:0.5000A P:17.33W PF:1.000 Freq:0Hz Lamp Flux:1324.35x1 lm		
NAME: T150-18W-TW-927-60	TYPE:Downlight	SERIAL No.:
SPEC.:2700K	DIM.: φ160mm*H100mm	
MFR.: NEKO LIGHTING AG		

Flux out:1061 lm



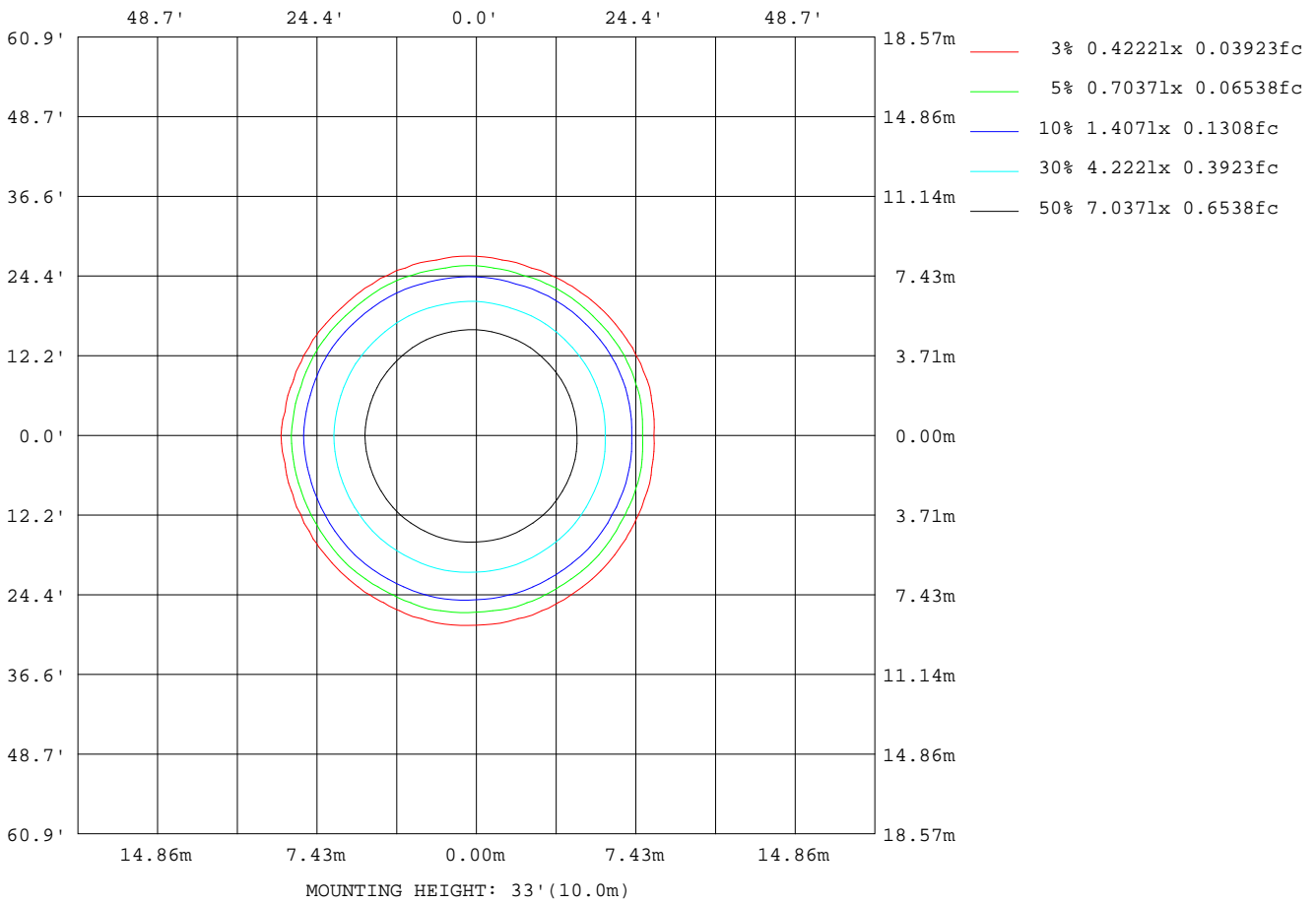
Note:The Curves indicate the illuminated area and the average illumination when the luminaire is at different distance.

C Range: 0 - 360DEG
C Interval: 15.0DEG
Test Speed: HIGH
Temperature:25.3DEG
Operators:Jason
Test Date:2020-08-29

γ Range: 0 - 90DEG
γ Interval: 0.5DEG
Test System:EVERFINE GO-2000B_V1 SYSTEM V2.0.362
Humidity:58%
Test Distance:5.850m [K=1.0000]
Remarks:

ISOLUX DIAGRAM

Test:U:34.67V I:0.5000A P:17.33W PF:1.000 Freq:0Hz Lamp Flux:1324.35x1 lm		
NAME: T150-18W-TW-927-60	TYPE:Downlight	SERIAL No.:
SPEC.:2700K	DIM.: φ160mm*H100mm	
MFR.: NEKO LIGHTING AG		



C Range: 0 - 360DEG
 C Interval: 15.0DEG
 Test Speed: HIGH
 Temperature:25.3DEG
 Operators:Jason
 Test Date:2020-08-29

γ Range: 0 - 90DEG
 γ Interval: 0.5DEG
 Test System:EVERFINE GO-2000B_V1 SYSTEM V2.0.362
 Humidity:58%
 Test Distance:5.850m [K=1.0000]
 Remarks:

LED Avg.L Report

Test:U:34.67V I:0.5000A P:17.33W PF:1.000 Freq:0Hz Lamp Flux:1324.35x1 lm		
NAME: T150-18W-TW-927-60	TYPE:Downlight	SERIAL No.:
SPEC.:2700K	DIM.: φ160mm*H100mm	
MFR.: NEKO LIGHTING AG		

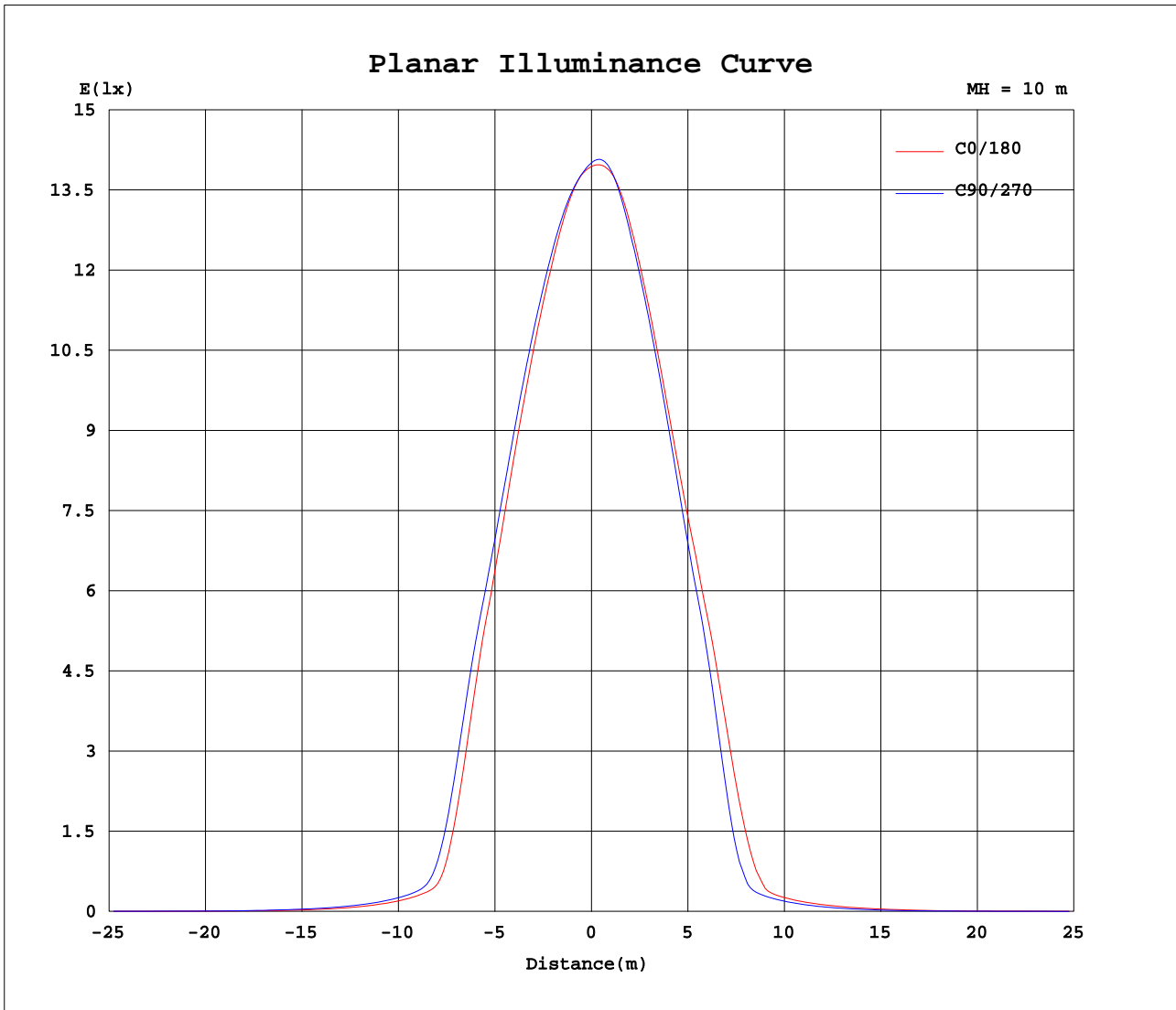
AvgL	cd/m2
L_0~180(65)av	1007
L_0~180(75)av	476
L_0~180(85)av	52
L_90~270(65)av	879
L_90~270(75)av	422
L_90~270(85)av	49
L_45(65)av	933
L_45(75)av	439
L_45(85)av	48

Standard: GB/T 29293-2012

C Range: 0 - 360DEG
C Interval: 15.0DEG
Test Speed: HIGH
Temperature:25.3DEG
Operators:Jason
Test Date:2020-08-29

γ Range: 0 - 90DEG
γ Interval: 0.5DEG
Test System:EVERFINE GO-2000B_V1 SYSTEM V2.0.362
Humidity:58%
Test Distance:5.850m [K=1.0000]
Remarks:

Planar Illuminance Curve



C Range: 0 - 360DEG
 C Interval: 15.0DEG
 Test Speed: HIGH
 Temperature: 25.3DEG
 Operators: Jason
 Test Date: 2020-08-29

γ Range: 0 - 90DEG
 γ Interval: 0.5DEG
 Test System: EVERFINE GO-2000B_V1 SYSTEM V2.0.362
 Humidity: 58%
 Test Distance: 5.850m [K=1.0000]
 Remarks:

LUMINOUS DISTRIBUTION INTENSITY DATA

Test:U:34.67V I:0.5000A P:17.33W PF:1.000 Freq:0Hz Lamp Flux:1324.35x1 lm		
NAME: T150-18W-TW-927-60	TYPE:Downlight	SERIAL No.:
SPEC.:2700K	DIM.: φ160mm*H100mm	
MFR.: NEKO LIGHTING AG		

Table--1

UNIT: cd

C(DEG) γ (DEG)	0	15	30	45	60	75	90	105	120	135	150	165	180	195	210	225	240	255	270
0	1396	1396	1396	1396	1396	1396	1396	1396	1396	1396	1396	1396	1396	1396	1396	1396	1396	1396	1396
5	1372	1369	1367	1366	1365	1366	1368	1372	1387	1401	1409	1415	1406	1410	1413	1413	1413	1410	1406
10	1313	1314	1314	1317	1318	1322	1325	1332	1354	1374	1384	1395	1382	1382	1383	1379	1376	1369	1362
15	1232	1238	1242	1248	1251	1255	1259	1268	1286	1305	1315	1324	1312	1310	1309	1303	1300	1291	1285
20	1119	1128	1135	1145	1151	1159	1165	1177	1194	1209	1214	1222	1214	1209	1207	1198	1195	1183	1176
25	952	965	975	991	1000	1015	1024	1040	1055	1070	1074	1082	1079	1072	1067	1054	1047	1029	1017
30	738	756	767	791	804	827	843	870	884	902	906	914	916	905	896	873	861	836	821
35	333	362	372	406	423	467	493	543	563	596	601	616	627	600	579	530	497	437	408
40	87.2	91.0	94.9	102	109	125	129	153	154	178	184	194	208	178	161	121	107	92.7	87.3
45	56.4	59.0	61.2	64.9	67.8	70.9	72.8	75.3	74.1	74.5	73.9	72.8	73.7	69.2	65.0	60.8	58.6	55.8	54.4
50	35.8	37.9	39.4	42.2	44.4	47.0	48.4	50.5	49.6	50.3	49.7	48.9	49.5	45.7	42.8	39.5	37.7	35.3	34.1
55	20.7	22.2	23.4	25.2	26.6	28.6	29.8	31.6	31.1	31.8	31.2	30.5	31.0	28.1	26.1	23.7	22.1	20.3	19.3
60	11.4	11.6	11.7	12.3	13.1	14.3	15.3	16.9	16.4	17.1	16.6	16.2	16.7	14.8	13.2	11.2	10.2	9.56	9.43
65	7.44	7.60	7.67	7.97	8.21	8.64	8.87	9.33	9.07	9.40	9.46	9.50	9.65	8.63	7.83	7.09	6.67	6.24	6.06
70	4.27	4.46	4.57	4.83	5.06	5.41	5.61	5.91	5.68	5.87	5.91	5.97	6.15	5.46	4.90	4.38	4.03	3.71	3.49
75	1.62	1.84	1.97	2.26	2.47	2.84	2.99	3.25	2.99	3.10	3.07	3.13	3.33	2.85	2.52	2.14	1.88	1.57	1.39
80	0.14	0.15	0.24	0.40	0.57	0.79	0.94	1.11	0.90	0.94	0.90	0.92	1.08	0.82	0.63	0.43	0.28	0.17	0.11
85	0.11	0.09	0.10	0.09	0.10	0.09	0.11	0.09	0.11	0.09	0.11	0.09	0.08	0.09	0.07	0.08	0.06	0.08	0.06
90	0.10	0.10	0.09	0.09	0.09	0.09	0.09	0.09	0.09	0.09	0.09	0.09	0.06	0.06	0.06	0.06	0.06	0.06	0.06

C Range: 0 - 360DEG
C Interval: 15.0DEG
Test Speed: HIGH
Temperature:25.3DEG
Operators:Jason
Test Date:2020-08-29

γ Range: 0 - 90DEG
γ Interval: 0.5DEG
Test System:EVERFINE GO-2000B_V1 SYSTEM V2.0.362
Humidity:58%
Test Distance:5.850m [K=1.0000]
Remarks:

LUMINOUS DISTRIBUTION INTENSITY DATA

Test:U:34.67V I:0.5000A P:17.33W PF:1.000 Freq:0Hz Lamp Flux:1324.35x1 lm		
NAME: T150-18W-TW-927-60	TYPE:Downlight	SERIAL No.:
SPEC.:2700K	DIM.: φ160mm*H100mm	
MFR.: NEKO LIGHTING AG		

Table--2

UNIT: cd

C(DEG) γ (DEG)	285	300	315	330	345														
0	1396	1396	1396	1396	1396														
5	1399	1389	1378	1374	1369														
10	1349	1337	1322	1316	1311														
15	1270	1258	1241	1235	1231														
20	1158	1149	1132	1126	1120														
25	994	985	970	964	959														
30	789	781	763	759	753														
35	367	370	356	360	355														
40	83.1	84.6	87.6	89.9	92.2														
45	52.5	53.9	56.2	58.1	59.9														
50	32.7	33.7	36.1	37.5	38.9														
55	18.4	19.3	21.4	22.4	23.2														
60	9.43	10.1	11.2	11.9	12.4														
65	6.03	6.50	7.23	7.79	8.15														
70	3.37	3.61	4.15	4.50	4.79														
75	1.26	1.37	1.64	1.84	2.00														
80	0.12	0.10	0.14	0.14	0.18														
85	0.08	0.06	0.07	0.05	0.07														
90	0.06	0.06	0.05	0.05	0.06														

C Range: 0 - 360DEG
 C Interval: 15.0DEG
 Test Speed: HIGH
 Temperature:25.3DEG
 Operators:Jason
 Test Date:2020-08-29

γ Range: 0 - 90DEG
 γ Interval: 0.5DEG
 Test System:EVERFINE GO-2000B_V1 SYSTEM V2.0.362
 Humidity:58%
 Test Distance:5.850m [K=1.0000]
 Remarks: