

LED Downlight T150-25W-930-60



| | | |
|---------------------|---------|--------------------------|
| Light Output Ratio: | 100.0% | |
| Luminaire Power: | 27.68 W | |
| SHR Nominal: | 1.00 | Calculated using the TM5 |
| SHR Maximum: | 1.00 | fine grid method. |

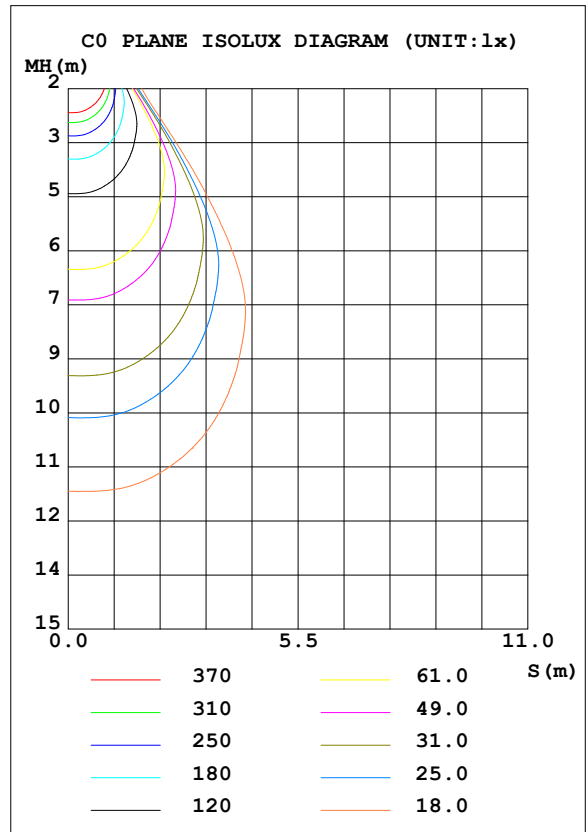
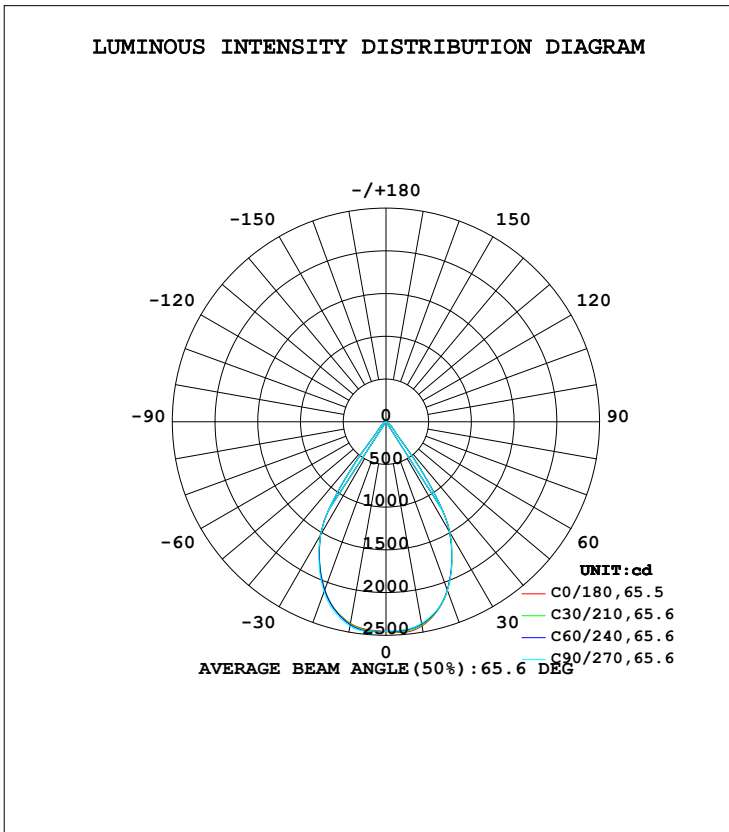
C Range: 0 - 360DEG
C Interval: 15.0DEG
Test Speed: HIGH
Temperature: 25.3DEG
Operators: Men Yongjian
Test Date: 2017-11-08

γ Range: 0 - 90DEG
 γ Interval: 1.0DEG
Test System: EVERFINE GO-2000B_V1 SYSTEM V2.0.288
Humidity: 56%
Test Distance: 5.850m [K=1.0000]
Remarks:

LUMINAIRE PHOTOMETRIC TEST REPORT

| | | |
|--|---------------------|-------------|
| Test:U:220.2V I:0.1291A P:27.68W PF:0.9667 Freq:49.90Hz Lamp Flux:2384.27x1 lm | | |
| NAME: T150-25W-930-60 | TYPE:Downlight | SERIAL No.: |
| SPEC.:3000K | DIM.: φ160mm*H100mm | |
| MFR.: NEKO LIGHTING AG | | |

| DATA OF LAMP | | PHOTOMETRIC DATA Eff: 86.14 lm/W | | | |
|-------------------|---------------|----------------------------------|--------|---------------------|-----------|
| MODEL | CITIZEN-3000K | I _{max} (cd) | 2472 | S/MH (C0/180) | 0.96 |
| NOMINAL POWER (W) | 28 | LOR (%) | 100.0 | S/MH (C90/270) | 0.96 |
| RATED VOLTAGE (V) | 220 | TOTAL FLUX (lm) | 2384.3 | η UP, DN (C0-180) | 0.0, 49.7 |
| NOMINAL FLUX (lm) | 2384.27 | CIE CLASS | DIRECT | η UP, DN (C180-360) | 0.0, 50.3 |
| LAMPS INSIDE | 1 | η up (%) | 0.0 | CIBSE SHR NOM | 1.00 |
| TEST VOLTAGE (V) | 220 | η down (%) | 100.0 | CIBSE SHR MAX | 1.00 |



C Range: 0 - 360DEG
C Interval: 15.0DEG
Test Speed: HIGH
Temperature: 25.3DEG
Operators: Men Yongjian
Test Date: 2017-11-08

γ Range: 0 - 90DEG
γ Interval: 1.0DEG
Test System: EVERFINE GO-2000B_V1 SYSTEM V2.0.288
Humidity: 56%
Test Distance: 5.850m [K=1.0000]
Remarks:

ZONAL FLUX DIAGRAM

ZONAL FLUX DIAGRAM:

| γ | C0 | C45 | C90 | C135 | C180 | C225 | C270 | C315 | γ | Φ zone | Φ total | %lum,lamp |
|----------|-----------------------|--------|--------|--------|--------|--------|--------|--------|----------|-------------|--------------|-----------|
| 10 | 2427 | 2413 | 2396 | 2394 | 2397 | 2404 | 2428 | 2422 | 0- 10 | 233.0 | 233.0 | 9.77,9.77 |
| 20 | 2101 | 2108 | 2102 | 2091 | 2100 | 2083 | 2119 | 2100 | 10- 20 | 641.2 | 874.2 | 36.7,36.7 |
| 30 | 1498 | 1506 | 1492 | 1504 | 1544 | 1525 | 1535 | 1497 | 20- 30 | 834.5 | 1709 | 71.7,71.7 |
| 40 | 215.6 | 219.7 | 202.5 | 199.7 | 220.9 | 207.0 | 211.7 | 209.5 | 30- 40 | 529.5 | 2238 | 93.9,93.9 |
| 50 | 77.36 | 79.11 | 74.84 | 72.96 | 76.94 | 71.91 | 69.56 | 71.61 | 40- 50 | 93.85 | 2332 | 97.8,97.8 |
| 60 | 19.20 | 19.67 | 17.09 | 17.14 | 20.04 | 17.80 | 16.39 | 16.53 | 50- 60 | 38.22 | 2370 | 99.4,99.4 |
| 70 | 6.433 | 6.608 | 5.719 | 5.554 | 6.774 | 6.439 | 5.582 | 5.379 | 60- 70 | 10.64 | 2381 | 99.9,99.9 |
| 80 | 0.7362 | 0.8051 | 0.7091 | 0.6348 | 0.6085 | 0.5614 | 0.5380 | 0.6025 | 70- 80 | 3.210 | 2384 | 100,100 |
| 90 | 0.1508 | 0.1467 | 0.1467 | 0.1440 | 0.0743 | 0.0766 | 0.0745 | 0.0764 | 80- 90 | 0.1974 | 2384 | 100,100 |
| 100 | | | | | | | | | 90-100 | | | |
| 110 | | | | | | | | | 100-110 | | | |
| 120 | | | | | | | | | 110-120 | | | |
| 130 | | | | | | | | | 120-130 | | | |
| 140 | | | | | | | | | 130-140 | | | |
| 150 | | | | | | | | | 140-150 | | | |
| 160 | | | | | | | | | 150-160 | | | |
| 170 | | | | | | | | | 160-170 | | | |
| 180 | | | | | | | | | 170-180 | | | |
| DEG | LUMINOUS INTENSITY:cd | | | | | | | | | UNIT:lm | | |

Conical surface Flux(90deg): 2293.9 lm

%lum = 96.2%

%lamp = 96.2%

Conical surface Flux(120deg): 2370.2 lm

%lum = 99.4%

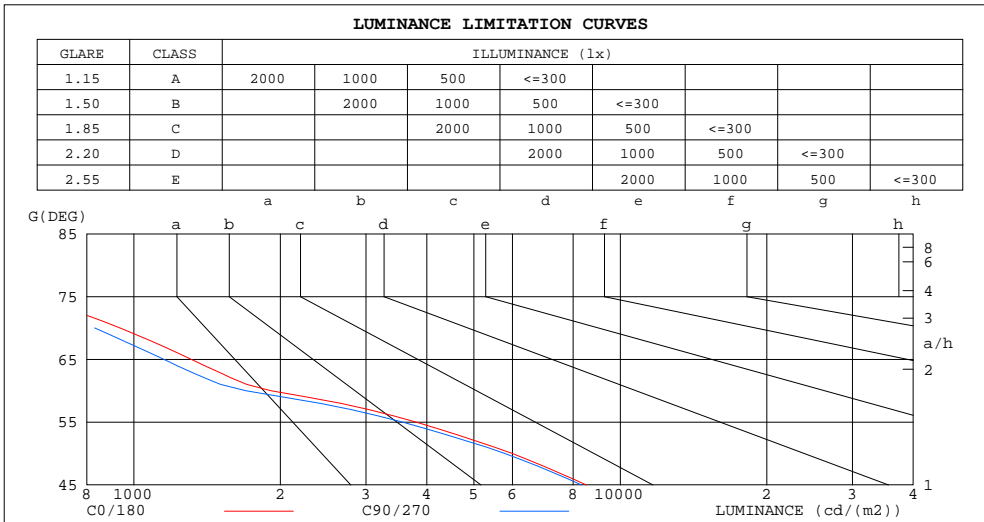
%lamp = 99.4%

C Range: 0 - 360DEG
C Interval: 15.0DEG
Test Speed: HIGH
Temperature:25.3DEG
Operators:Men Yongjian
Test Date:2017-11-08

γ Range: 0 - 90DEG
 γ Interval: 1.0DEG
Test System:EVERFINE GO-2000B_V1 SYSTEM V2.0.288
Humidity:56%
Test Distance:5.850m [K=1.0000]
Remarks:

LUMINANCE LIMITATION CURVES

| | | |
|--|---------------------|-------------|
| Test:U:220.2V I:0.1291A P:27.68W PF:0.9667 Freq:49.90Hz Lamp Flux:2384.27x1 lm | | |
| NAME: T150-25W-930-60 | TYPE:Downlight | SERIAL No.: |
| SPEC.:3000K | DIM.: φ160mm*H100mm | |
| MFR.: NEKO LIGHTING AG | | |



| LUMINANCE cd/(m2) | | |
|-------------------|--------|---------|
| G(DEG) | C0/180 | C90/270 |
| 85 | 96 | 96 |
| 80 | 211 | 203 |
| 75 | 593 | 540 |
| 70 | 936 | 831 |
| 65 | 1312 | 1152 |
| 60 | 1911 | 1698 |
| 55 | 3801 | 3563 |
| 50 | 5990 | 5784 |
| 45 | 8513 | 8318 |

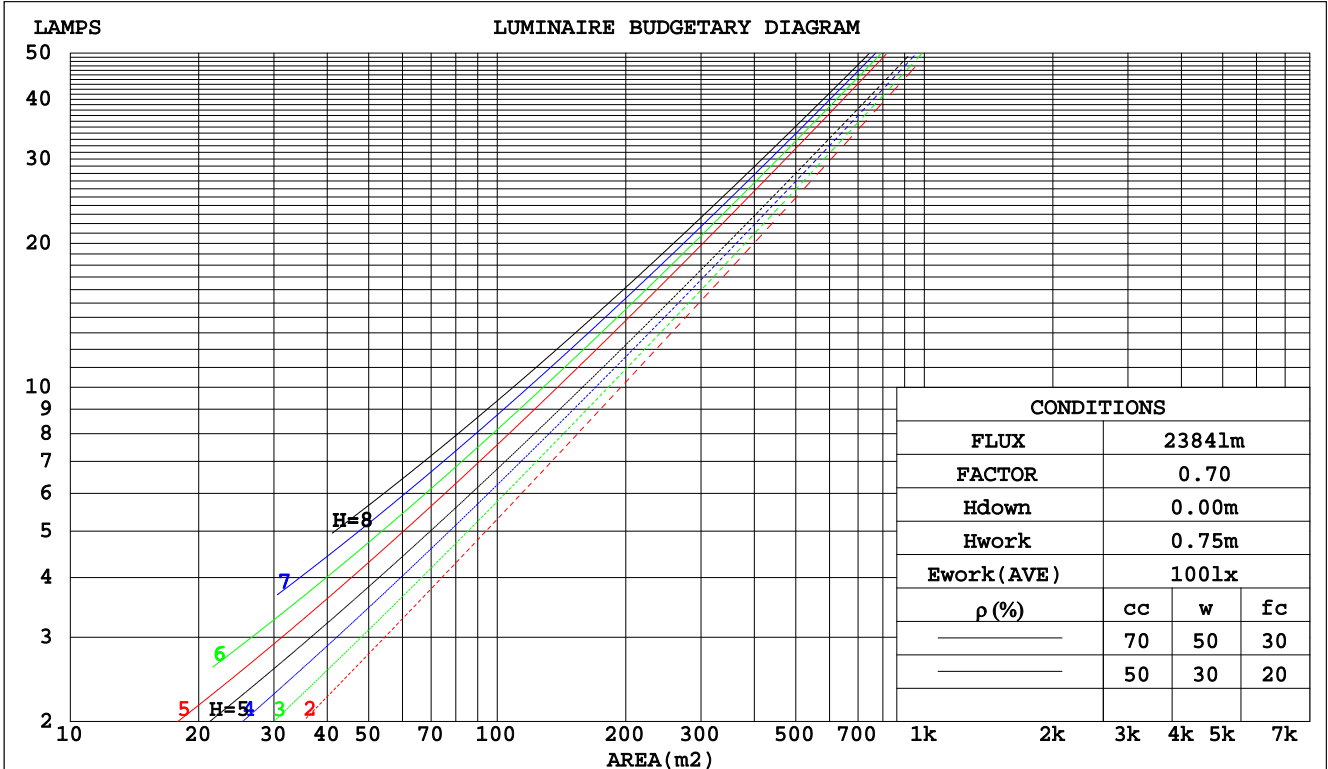
C Range: 0 - 360DEG
 C Interval: 15.0DEG
 Test Speed: HIGH
 Temperature:25.3DEG
 Operators:Men Yongjian
 Test Date:2017-11-08

γ Range: 0 - 90DEG
 γ Interval: 1.0DEG
 Test System:EVERFINE GO-2000B_V1 SYSTEM V2.0.288
 Humidity:56%
 Test Distance:5.850m [K=1.0000]
 Remarks:

CU AND LUMINAIRE BUDGETARY ESTIMATE DIAGRAM

| | | |
|--|---------------------|-------------|
| Test:U:220.2V I:0.1291A P:27.68W PF:0.9667 Freq:49.90Hz Lamp Flux:2384.27x1 lm | | |
| NAME: T150-25W-930-60 | TYPE:Downlight | SERIAL No.: |
| SPEC.:3000K | DIM.: φ160mm*H100mm | |
| MFR.: NEKO LIGHTING AG | | |

| ρcc | 80% | | | 70% | | | 50% | | | 30% | | | 10% | | | 0 |
|------|---------------------------------|------|------|------|------|------|------|------|------|------|------|------|------|------|------|------|
| ρw | 50% | 30% | 10% | 50% | 30% | 10% | 50% | 30% | 10% | 50% | 30% | 10% | 50% | 30% | 10% | 0 |
| ρfc | 20% | | | 20% | | | 20% | | | 20% | | | 20% | | | 0 |
| RCR | RCR:Room Cavity Ratio | | | | | | | | | | | | | | | |
| | Coefficients of Utilization(CU) | | | | | | | | | | | | | | | |
| 0.0 | 1.19 | 1.19 | 1.19 | 1.16 | 1.16 | 1.16 | 1.11 | 1.11 | 1.11 | 1.06 | 1.06 | 1.06 | 1.02 | 1.02 | 1.02 | 1.00 |
| 1.0 | 1.11 | 1.08 | 1.06 | 1.09 | 1.06 | 1.04 | 1.05 | 1.03 | 1.01 | 1.01 | .99 | .98 | .97 | .96 | .95 | .93 |
| 2.0 | 1.03 | .99 | .96 | 1.01 | .98 | .94 | .98 | .95 | .92 | .95 | .93 | .90 | .92 | .90 | .89 | .87 |
| 3.0 | .96 | .91 | .87 | .95 | .90 | .86 | .92 | .88 | .85 | .90 | .86 | .84 | .87 | .85 | .82 | .81 |
| 4.0 | .90 | .84 | .80 | .88 | .83 | .79 | .86 | .82 | .78 | .84 | .81 | .78 | .82 | .79 | .77 | .75 |
| 5.0 | .84 | .78 | .74 | .83 | .77 | .73 | .81 | .76 | .73 | .79 | .75 | .72 | .78 | .74 | .71 | .70 |
| 6.0 | .79 | .73 | .68 | .78 | .72 | .68 | .76 | .71 | .68 | .75 | .71 | .67 | .74 | .70 | .67 | .65 |
| 7.0 | .74 | .68 | .64 | .73 | .67 | .63 | .72 | .67 | .63 | .71 | .66 | .63 | .70 | .66 | .62 | .61 |
| 8.0 | .70 | .64 | .59 | .69 | .63 | .59 | .68 | .63 | .59 | .67 | .62 | .59 | .66 | .62 | .59 | .57 |
| 9.0 | .66 | .60 | .56 | .65 | .59 | .56 | .64 | .59 | .55 | .63 | .59 | .55 | .62 | .58 | .55 | .54 |
| 10.0 | .62 | .56 | .52 | .62 | .56 | .52 | .61 | .56 | .52 | .60 | .55 | .52 | .59 | .55 | .52 | .50 |



C Range: 0 - 360DEG
 C Interval: 15.0DEG
 Test Speed: HIGH
 Temperature:25.3DEG
 Operators:Men Yongjian
 Test Date:2017-11-08

γ Range: 0 - 90DEG
 γ Interval: 1.0DEG
 Test System:EVERFINE GO-2000B_V1 SYSTEM V2.0.288
 Humidity:56%
 Test Distance:5.850m [K=1.0000]
 Remarks:

WEC AND CCEC

| | | |
|--|---------------------|-------------|
| Test:U:220.2V I:0.1291A P:27.68W PF:0.9667 Freq:49.90Hz Lamp Flux:2384.27x1 lm | | |
| NAME: T150-25W-930-60 | TYPE:Downlight | SERIAL No.: |
| SPEC.:3000K | DIM.: φ160mm*H100mm | |
| MFR.: NEKO LIGHTING AG | | |

| ρcc | 80% | | | 70% | | | 50% | | | 30% | | | 10% | | | 0 |
|------|-----------------------|------|------|------|------|------|---------------------------------|------|------|------|------|------|------|------|------|---|
| ρw | 50% | 30% | 10% | 50% | 30% | 10% | 50% | 30% | 10% | 50% | 30% | 10% | 50% | 30% | 10% | 0 |
| ρfc | 20% | | | 20% | | | 20% | | | 20% | | | 20% | | | 0 |
| RCR | RCR:Room Cavity Ratio | | | | | | Wall Exitance Coefficients(WEC) | | | | | | | | | |
| 0.0 | | | | | | | | | | | | | | | | |
| 1.0 | .179 | .102 | .032 | .172 | .098 | .031 | .159 | .091 | .029 | .148 | .085 | .027 | .137 | .079 | .026 | |
| 2.0 | .171 | .094 | .029 | .166 | .091 | .028 | .155 | .086 | .027 | .145 | .082 | .026 | .136 | .077 | .024 | |
| 3.0 | .164 | .087 | .026 | .159 | .085 | .026 | .150 | .081 | .025 | .141 | .077 | .024 | .134 | .074 | .023 | |
| 4.0 | .156 | .081 | .024 | .152 | .079 | .023 | .144 | .076 | .023 | .137 | .073 | .022 | .130 | .071 | .022 | |
| 5.0 | .149 | .076 | .022 | .145 | .075 | .022 | .138 | .072 | .021 | .132 | .070 | .021 | .126 | .067 | .020 | |
| 6.0 | .142 | .071 | .020 | .139 | .070 | .020 | .133 | .068 | .020 | .127 | .066 | .019 | .122 | .064 | .019 | |
| 7.0 | .136 | .067 | .019 | .133 | .066 | .019 | .128 | .065 | .019 | .123 | .063 | .018 | .118 | .061 | .018 | |
| 8.0 | .130 | .064 | .018 | .128 | .063 | .018 | .123 | .061 | .018 | .119 | .060 | .017 | .114 | .059 | .017 | |
| 9.0 | .125 | .060 | .017 | .123 | .060 | .017 | .118 | .059 | .017 | .114 | .057 | .016 | .111 | .056 | .016 | |
| 10.0 | .120 | .058 | .016 | .118 | .057 | .016 | .114 | .056 | .016 | .110 | .055 | .016 | .107 | .054 | .015 | |

| ρcc | 80% | | | 70% | | | 50% | | | 30% | | | 10% | | | 0 |
|------|-----------------------|------|------|------|------|------|--|------|------|------|------|------|------|------|------|---|
| ρw | 50% | 30% | 10% | 50% | 30% | 10% | 50% | 30% | 10% | 50% | 30% | 10% | 50% | 30% | 10% | 0 |
| ρfc | 20% | | | 20% | | | 20% | | | 20% | | | 20% | | | 0 |
| RCR | RCR:Room Cavity Ratio | | | | | | Ceiling Cavity Exitance Coefficients(CCEC) | | | | | | | | | |
| 0.0 | .190 | .190 | .190 | .163 | .163 | .163 | .111 | .111 | .111 | .064 | .064 | .064 | .020 | .020 | .020 | |
| 1.0 | .171 | .157 | .145 | .147 | .135 | .125 | .100 | .093 | .086 | .058 | .054 | .050 | .018 | .017 | .016 | |
| 2.0 | .156 | .132 | .113 | .134 | .114 | .097 | .092 | .079 | .068 | .053 | .046 | .040 | .017 | .015 | .013 | |
| 3.0 | .144 | .114 | .089 | .123 | .098 | .077 | .085 | .068 | .054 | .049 | .040 | .032 | .016 | .013 | .010 | |
| 4.0 | .134 | .099 | .072 | .115 | .085 | .063 | .079 | .060 | .044 | .046 | .035 | .026 | .015 | .011 | .009 | |
| 5.0 | .125 | .087 | .059 | .108 | .076 | .052 | .074 | .053 | .036 | .043 | .031 | .022 | .014 | .010 | .007 | |
| 6.0 | .118 | .078 | .049 | .101 | .068 | .043 | .070 | .047 | .030 | .041 | .028 | .018 | .013 | .009 | .006 | |
| 7.0 | .112 | .071 | .042 | .096 | .061 | .036 | .066 | .043 | .026 | .039 | .025 | .015 | .012 | .008 | .005 | |
| 8.0 | .106 | .064 | .036 | .091 | .056 | .031 | .063 | .039 | .022 | .037 | .023 | .013 | .012 | .008 | .004 | |
| 9.0 | .101 | .059 | .031 | .087 | .051 | .027 | .060 | .036 | .019 | .035 | .021 | .011 | .011 | .007 | .004 | |
| 10.0 | .097 | .055 | .027 | .083 | .048 | .024 | .058 | .034 | .017 | .034 | .020 | .010 | .011 | .007 | .003 | |

C Range: 0 - 360DEG
 C Interval: 15.0DEG
 Test Speed: HIGH
 Temperature:25.3DEG
 Operators:Men Yongjian
 Test Date:2017-11-08

γ Range: 0 - 90DEG
 γ Interval: 1.0DEG
 Test System:EVERFINE GO-2000B_V1 SYSTEM V2.0.288
 Humidity:56%
 Test Distance:5.850m [K=1.0000]
 Remarks:

UGR(Unified Glare Rating) Table

| | | |
|--|---------------------|-------------|
| Test:U:220.2V I:0.1291A P:27.68W PF:0.9667 Freq:49.90Hz Lamp Flux:2384.27x1 lm | | |
| NAME: T150-25W-930-60 | TYPE:Downlight | SERIAL No.: |
| SPEC.:3000K | DIM.: φ160mm*H100mm | |
| MFR.: NEKO LIGHTING AG | | |

| | | | | | | | | | | |
|--|------------------|------|------|------|------|----------------|------|------|------|------|
| ceiling/cavity | 0.7 | 0.7 | 0.5 | 0.5 | 0.3 | 0.7 | 0.7 | 0.5 | 0.5 | 0.3 |
| walls | 0.5 | 0.3 | 0.5 | 0.3 | 0.3 | 0.5 | 0.3 | 0.5 | 0.3 | 0.3 |
| working plane | 0.2 | 0.2 | 0.2 | 0.2 | 0.2 | 0.2 | 0.2 | 0.2 | 0.2 | 0.2 |
| Room dimensions | Viewed crosswise | | | | | Viewed endwise | | | | |
| x = 2H y = 2H | 14.6 | 15.5 | 14.8 | 15.7 | 15.9 | 14.4 | 15.4 | 14.7 | 15.6 | 15.8 |
| 3H | 14.4 | 15.3 | 14.7 | 15.5 | 15.7 | 14.3 | 15.2 | 14.6 | 15.4 | 15.6 |
| 4H | 14.3 | 15.2 | 14.6 | 15.4 | 15.6 | 14.2 | 15.0 | 14.5 | 15.3 | 15.5 |
| 6H | 14.2 | 15.0 | 14.5 | 15.3 | 15.5 | 14.1 | 14.9 | 14.4 | 15.1 | 15.4 |
| 8H | 14.2 | 15.0 | 14.5 | 15.2 | 15.5 | 14.1 | 14.8 | 14.4 | 15.1 | 15.3 |
| 12H | 14.2 | 14.9 | 14.5 | 15.1 | 15.4 | 14.0 | 14.8 | 14.4 | 15.0 | 15.3 |
| 4H 2H | 14.3 | 15.2 | 14.6 | 15.4 | 15.6 | 14.2 | 15.1 | 14.5 | 15.3 | 15.5 |
| 3H | 14.2 | 14.9 | 14.5 | 15.2 | 15.4 | 14.1 | 14.8 | 14.4 | 15.0 | 15.3 |
| 4H | 14.1 | 14.7 | 14.4 | 15.0 | 15.4 | 14.0 | 14.6 | 14.3 | 14.9 | 15.2 |
| 6H | 14.0 | 14.6 | 14.4 | 14.9 | 15.3 | 13.9 | 14.5 | 14.3 | 14.8 | 15.1 |
| 8H | 14.0 | 14.5 | 14.4 | 14.8 | 15.2 | 13.8 | 14.4 | 14.2 | 14.7 | 15.1 |
| 12H | 13.9 | 14.4 | 14.3 | 14.8 | 15.2 | 13.8 | 14.3 | 14.2 | 14.6 | 15.0 |
| 8H 4H | 14.0 | 14.5 | 14.4 | 14.8 | 15.2 | 13.8 | 14.4 | 14.2 | 14.7 | 15.1 |
| 6H | 13.9 | 14.3 | 14.3 | 14.7 | 15.1 | 13.7 | 14.2 | 14.2 | 14.6 | 15.0 |
| 8H | 13.8 | 14.2 | 14.3 | 14.6 | 15.0 | 13.7 | 14.1 | 14.1 | 14.5 | 14.9 |
| 12H | 13.8 | 14.1 | 14.2 | 14.5 | 15.0 | 13.6 | 14.0 | 14.1 | 14.4 | 14.9 |
| 12H 4H | 13.9 | 14.4 | 14.3 | 14.8 | 15.2 | 13.8 | 14.3 | 14.2 | 14.6 | 15.0 |
| 6H | 13.8 | 14.2 | 14.3 | 14.6 | 15.0 | 13.7 | 14.1 | 14.1 | 14.5 | 14.9 |
| 8H | 13.8 | 14.1 | 14.2 | 14.5 | 15.0 | 13.6 | 14.0 | 14.1 | 14.4 | 14.9 |
| Variations with the observer position at spacings: | | | | | | | | | | |
| S = 1.0H | + 4.3 / - 7.3 | | | | | + 4.4 / - 7.3 | | | | |
| 1.5H | + 6.2 / - 4.9 | | | | | + 6.2 / - 4.8 | | | | |
| 2.0H | + 3.9 / - 5.4 | | | | | + 4.0 / - 5.7 | | | | |

CIE Pub.117, 2384 lm Total Lamp Luminous Flux Correct (8log(F/F0) = 3.0)

C Range: 0 - 360DEG
 C Interval: 15.0DEG
 Test Speed: HIGH
 Temperature:25.3DEG
 Operators:Men Yongjian
 Test Date:2017-11-08

γ Range: 0 - 90DEG
 γ Interval: 1.0DEG
 Test System:EVERFINE GO-2000B_V1 SYSTEM V2.0.288
 Humidity:56%
 Test Distance:5.850m [K=1.0000]
 Remarks:

UTILIZATION FACTORS TABLE

| | | |
|--|---------------------|-------------|
| Test:U:220.2V I:0.1291A P:27.68W PF:0.9667 Freq:49.90Hz Lamp Flux:2384.27x1 lm | | |
| NAME: T150-25W-930-60 | TYPE:Downlight | SERIAL No.: |
| SPEC.:3000K | DIM.: φ160mm*H100mm | |
| MFR.: NEKO LIGHTING AG | | |

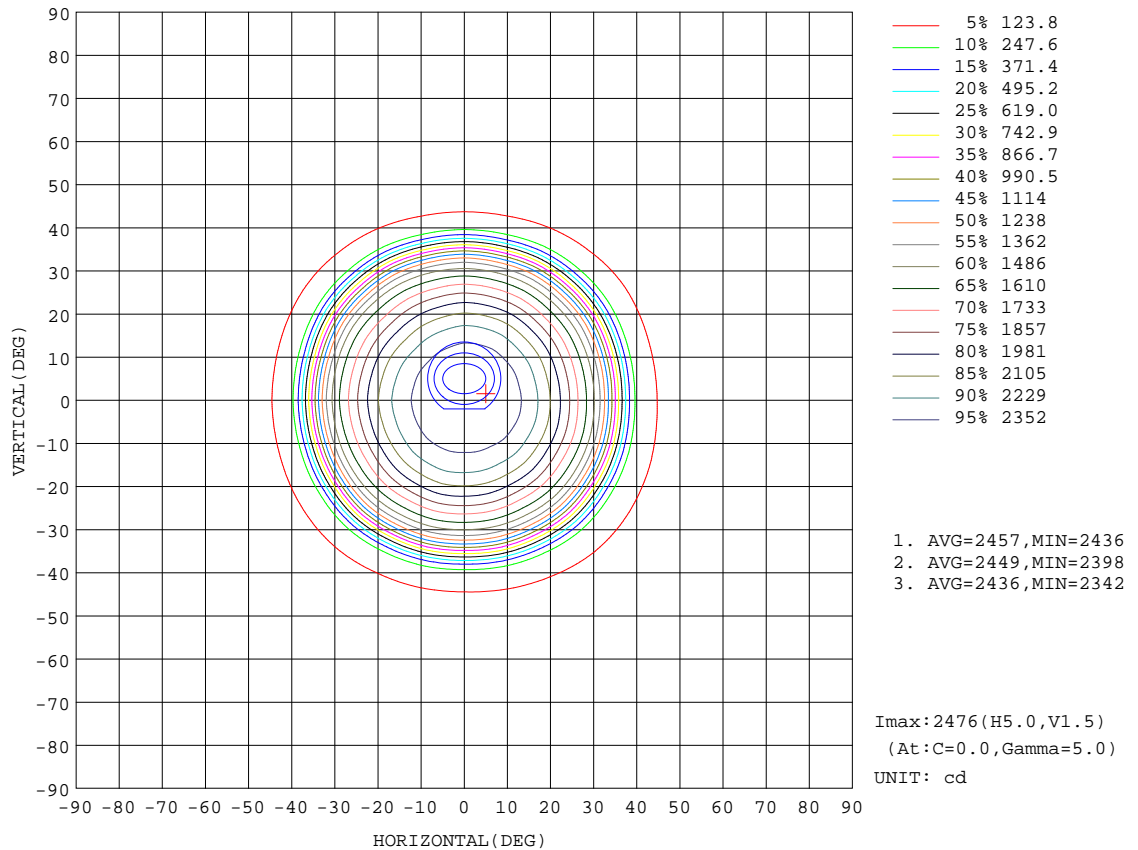
| REFLECTANCE | | | | | | | | | | |
|----------------------------------|---|-----|-----------|-----|-----|-----|---------------|-----|-----|--------|
| Ceiling | 0.8 | 0.8 | 0.8 | 0.7 | 0.7 | 0.7 | 0.5 | 0.5 | 0.5 | 0 |
| Walls | 0.7 | 0.5 | 0.3 | 0.7 | 0.5 | 0.3 | 0.7 | 0.5 | 0.3 | 0 |
| Working plane | 0.2 | 0.2 | 0.2 | 0.2 | 0.2 | 0.2 | 0.2 | 0.2 | 0.2 | 0 |
| ROOM INDEX | UTILIZATION FACTORS(PERCENT) $k(RI) \times RCR = 5$ | | | | | | | | | |
| k = 0.60 | 88 | 81 | 78 | 87 | 81 | 77 | 86 | 81 | 77 | 74 |
| 0.80 | 95 | 89 | 86 | 94 | 89 | 85 | 93 | 88 | 85 | 81 |
| 1.00 | 100 | 94 | 90 | 99 | 94 | 90 | 97 | 93 | 90 | 86 |
| 1.25 | 103 | 98 | 95 | 102 | 98 | 95 | 101 | 97 | 94 | 90 |
| 1.50 | 106 | 102 | 98 | 105 | 101 | 98 | 103 | 99 | 97 | 92 |
| 2.00 | 109 | 105 | 102 | 107 | 104 | 101 | 105 | 102 | 99 | 94 |
| 2.50 | 110 | 107 | 104 | 109 | 105 | 103 | 106 | 103 | 101 | 95 |
| 3.00 | 112 | 109 | 106 | 110 | 107 | 105 | 107 | 105 | 103 | 96 |
| 4.00 | 114 | 111 | 109 | 112 | 110 | 108 | 108 | 106 | 105 | 98 |
| 5.00 | 115 | 113 | 111 | 113 | 111 | 110 | 109 | 108 | 106 | 99 |
| ROOM INDEX | UF(total) | | | | | | | | | Direct |
| According to DIN EN 13032-2 2004 | | | Suspended | | | | SHRNOM = 1.25 | | | |

C Range: 0 - 360DEG
 C Interval: 15.0DEG
 Test Speed: HIGH
 Temperature:25.3DEG
 Operators:Men Yongjian
 Test Date:2017-11-08

γ Range: 0 - 90DEG
 γ Interval: 1.0DEG
 Test System:EVERFINE GO-2000B_V1 SYSTEM V2.0.288
 Humidity:56%
 Test Distance:5.850m [K=1.0000]
 Remarks:

ISOCANDELA DIAGRAM

| | | |
|--|---------------------|-------------|
| Test:U:220.2V I:0.1291A P:27.68W PF:0.9667 Freq:49.90Hz Lamp Flux:2384.27x1 lm | | |
| NAME: T150-25W-930-60 | TYPE:Downlight | SERIAL No.: |
| SPEC.:3000K | DIM.: φ160mm*H100mm | |
| MFR.: NEKO LIGHTING AG | | |



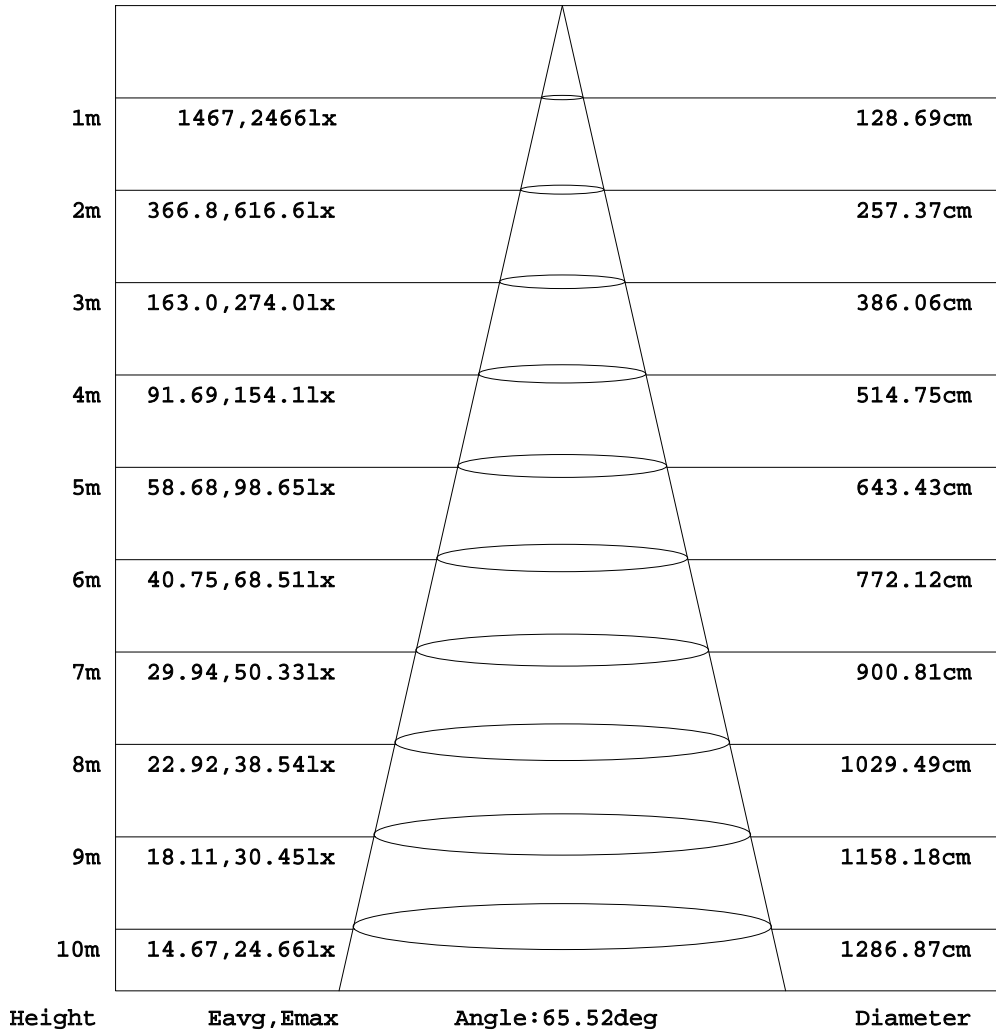
C Range: 0 - 360DEG
C Interval: 15.0DEG
Test Speed: HIGH
Temperature: 25.3DEG
Operators: Men Yongjian
Test Date: 2017-11-08

γ Range: 0 - 90DEG
γ Interval: 1.0DEG
Test System: EVERFINE GO-2000B_V1 SYSTEM V2.0.288
Humidity: 56%
Test Distance: 5.850m [K=1.0000]
Remarks:

AAI Figure

| | | |
|--|---------------------|-------------|
| Test:U:220.2V I:0.1291A P:27.68W PF:0.9667 Freq:49.90Hz Lamp Flux:2384.27x1 lm | | |
| NAME: T150-25W-930-60 | TYPE:Downlight | SERIAL No.: |
| SPEC.:3000K | DIM.: φ160mm*H100mm | |
| MFR.: NEKO LIGHTING AG | | |

Flux out:1944 lm



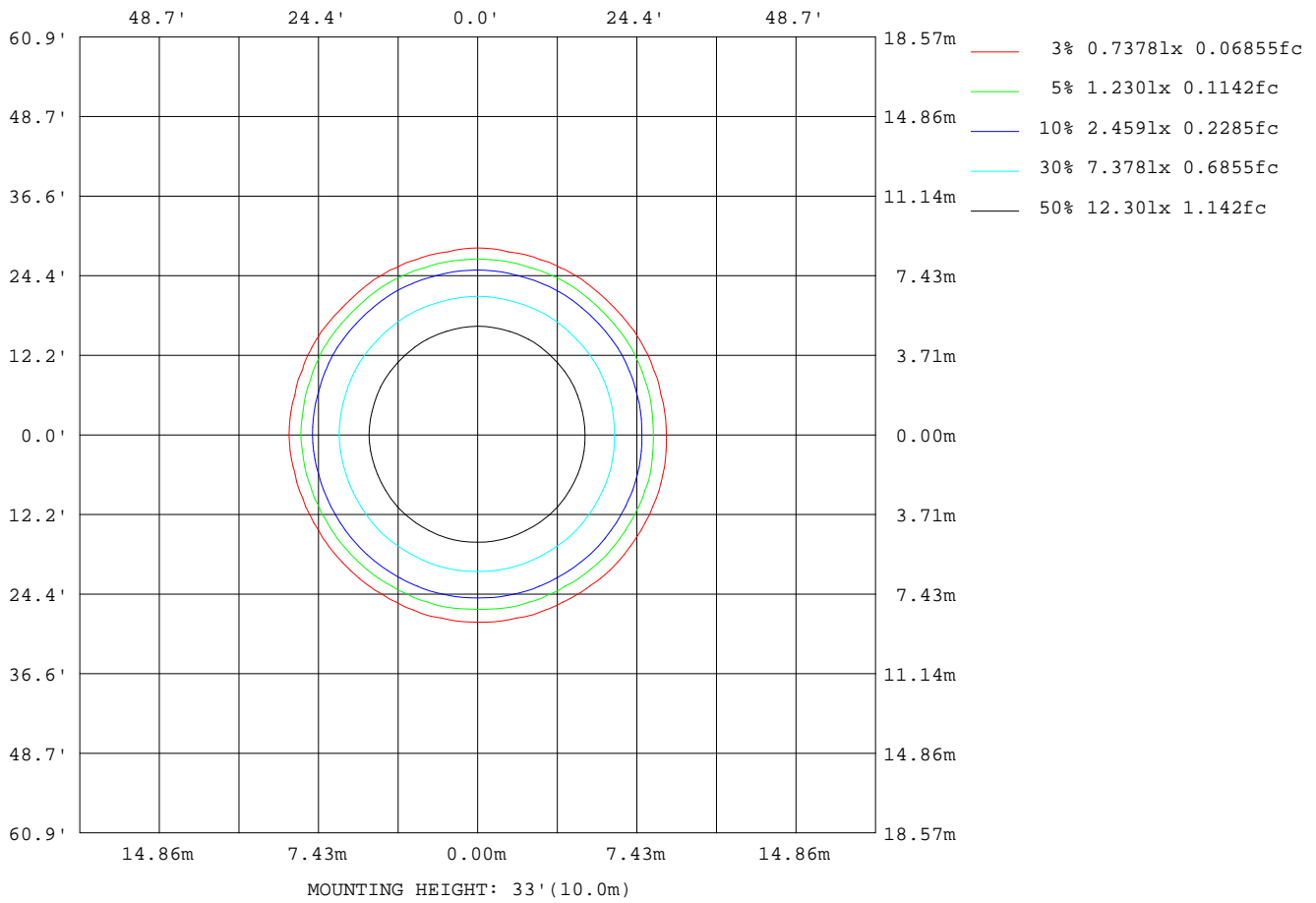
Note:The Curves indicate the illuminated area and the average illumination when the luminaire is at different distance.

C Range: 0 - 360DEG
C Interval: 15.0DEG
Test Speed: HIGH
Temperature:25.3DEG
Operators:Men Yongjian
Test Date:2017-11-08

γ Range: 0 - 90DEG
γ Interval: 1.0DEG
Test System:EVERFINE GO-2000B_V1 SYSTEM V2.0.288
Humidity:56%
Test Distance:5.850m [K=1.0000]
Remarks:

ISOLUX DIAGRAM

| | | |
|--|---------------------|-------------|
| Test:U:220.2V I:0.1291A P:27.68W PF:0.9667 Freq:49.90Hz Lamp Flux:2384.27x1 lm | | |
| NAME: T150-25W-930-60 | TYPE:Downlight | SERIAL No.: |
| SPEC.:3000K | DIM.: φ160mm*H100mm | |
| MFR.: NEKO LIGHTING AG | | |



C Range: 0 - 360DEG
 C Interval: 15.0DEG
 Test Speed: HIGH
 Temperature:25.3DEG
 Operators:Men Yongjian
 Test Date:2017-11-08

γ Range: 0 - 90DEG
 γ Interval: 1.0DEG
 Test System:EVERFINE GO-2000B_V1 SYSTEM V2.0.288
 Humidity:56%
 Test Distance:5.850m [K=1.0000]
 Remarks:

LED Avg.L Report

| | | |
|--|---------------------|-------------|
| Test:U:220.2V I:0.1291A P:27.68W PF:0.9667 Freq:49.90Hz Lamp Flux:2384.27x1 lm | | |
| NAME: T150-25W-930-60 | TYPE:Downlight | SERIAL No.: |
| SPEC.:3000K | DIM.: φ160mm*H100mm | |
| MFR.: NEKO LIGHTING AG | | |

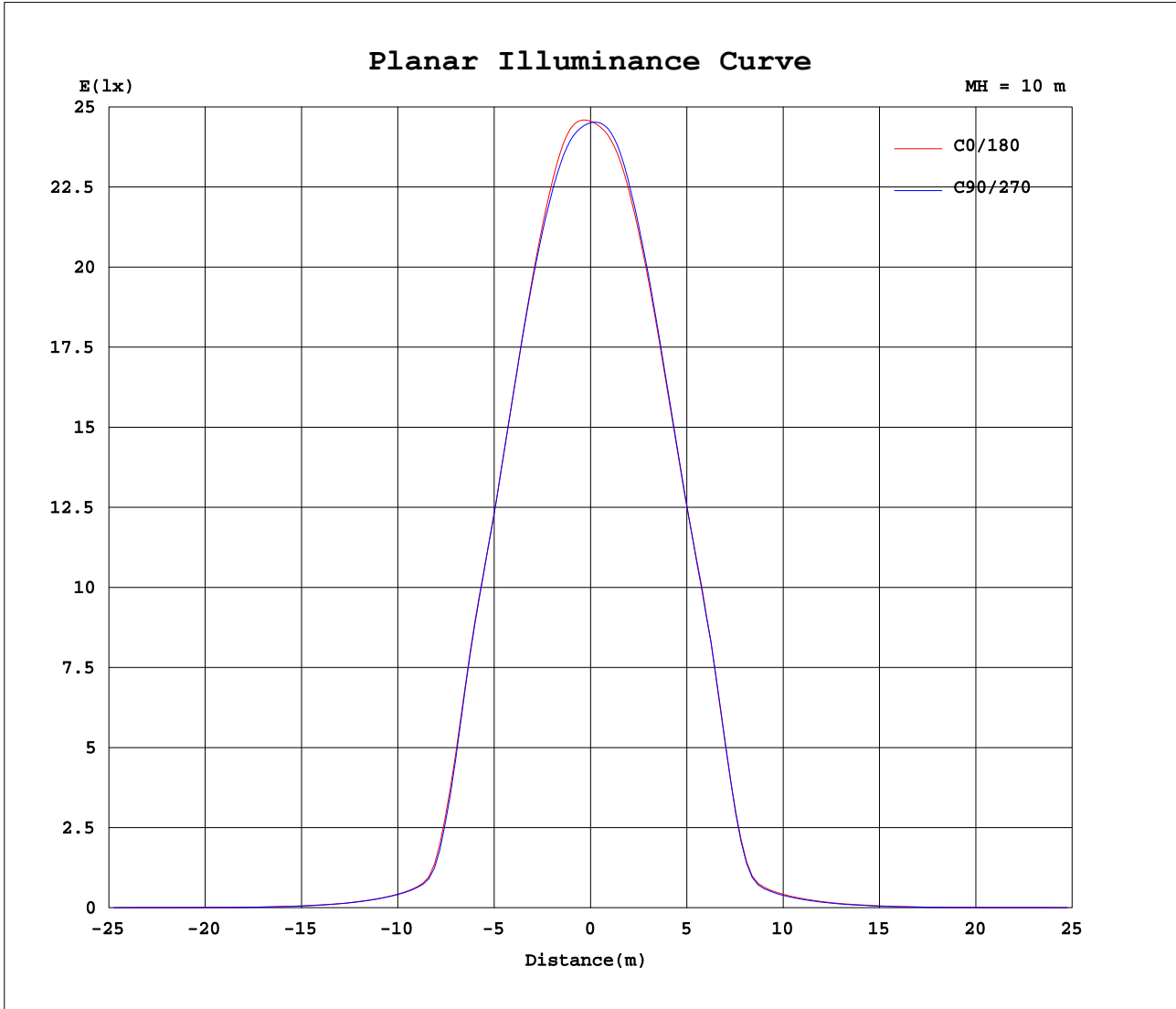
| AvgL | cd/m2 |
|------------------|-------|
| L_0~180 (65) av | 1330 |
| L_0~180 (75) av | 603 |
| L_0~180 (85) av | 75 |
| L_90~270 (65) av | 1135 |
| L_90~270 (75) av | 524 |
| L_90~270 (85) av | 73 |
| L_45 (65) av | 1207 |
| L_45 (75) av | 556 |
| L_45 (85) av | 74 |

Standard: GB/T 29293-2012

C Range: 0 - 360DEG
C Interval: 15.0DEG
Test Speed: HIGH
Temperature:25.3DEG
Operators:Men Yongjian
Test Date:2017-11-08

γ Range: 0 - 90DEG
γ Interval: 1.0DEG
Test System:EVERFINE GO-2000B_V1 SYSTEM V2.0.288
Humidity:56%
Test Distance:5.850m [K=1.0000]
Remarks:

Planar Illuminance Curve



C Range: 0 - 360DEG
 C Interval: 15.0DEG
 Test Speed: HIGH
 Temperature: 25.3DEG
 Operators: Men Yongjian
 Test Date: 2017-11-08

γ Range: 0 - 90DEG
 γ Interval: 1.0DEG
 Test System: EVERFINE GO-2000B_V1 SYSTEM V2.0.288
 Humidity: 56%
 Test Distance: 5.850m [K=1.0000]
 Remarks:

LUMINOUS DISTRIBUTION INTENSITY DATA

| | | |
|--|---------------------|-------------|
| Test:U:220.2V I:0.1291A P:27.68W PF:0.9667 Freq:49.90Hz Lamp Flux:2384.27x1 lm | | |
| NAME: T150-25W-930-60 | TYPE:Downlight | SERIAL No.: |
| SPEC.:3000K | DIM.: φ160mm*H100mm | |
| MFR.: NEKO LIGHTING AG | | |

Table--1

UNIT: cd

| C (DEG) γ (DEG) | 0 | 15 | 30 | 45 | 60 | 75 | 90 | 105 | 120 | 135 | 150 | 165 | 180 | 195 | 210 | 225 | 240 | 255 | 270 |
|--------------------|------|------|------|------|------|------|------|------|------|------|------|------|------|------|------|------|------|------|------|
| 0 | 2455 | 2455 | 2455 | 2455 | 2455 | 2455 | 2455 | 2455 | 2455 | 2455 | 2455 | 2455 | 2455 | 2455 | 2455 | 2455 | 2455 | 2455 | 2455 |
| 5 | 2472 | 2469 | 2463 | 2457 | 2451 | 2447 | 2443 | 2442 | 2442 | 2443 | 2443 | 2442 | 2442 | 2445 | 2450 | 2454 | 2459 | 2463 | 2467 |
| 10 | 2427 | 2425 | 2418 | 2413 | 2404 | 2400 | 2396 | 2396 | 2394 | 2394 | 2389 | 2388 | 2397 | 2397 | 2402 | 2404 | 2413 | 2417 | 2428 |
| 15 | 2301 | 2303 | 2298 | 2299 | 2290 | 2290 | 2288 | 2290 | 2285 | 2281 | 2272 | 2269 | 2284 | 2278 | 2280 | 2276 | 2288 | 2295 | 2309 |
| 20 | 2101 | 2107 | 2103 | 2108 | 2098 | 2103 | 2102 | 2106 | 2095 | 2091 | 2081 | 2080 | 2100 | 2091 | 2092 | 2083 | 2097 | 2102 | 2119 |
| 25 | 1822 | 1831 | 1826 | 1832 | 1820 | 1826 | 1825 | 1832 | 1821 | 1822 | 1813 | 1818 | 1841 | 1832 | 1835 | 1825 | 1837 | 1838 | 1852 |
| 30 | 1498 | 1509 | 1500 | 1506 | 1488 | 1495 | 1492 | 1503 | 1492 | 1504 | 1501 | 1516 | 1544 | 1534 | 1542 | 1525 | 1534 | 1525 | 1535 |
| 35 | 870 | 890 | 863 | 880 | 850 | 867 | 841 | 861 | 836 | 863 | 846 | 878 | 925 | 908 | 931 | 908 | 933 | 911 | 932 |
| 40 | 216 | 225 | 218 | 220 | 209 | 210 | 202 | 206 | 197 | 200 | 195 | 203 | 221 | 214 | 220 | 207 | 213 | 204 | 212 |
| 45 | 121 | 125 | 124 | 124 | 122 | 121 | 118 | 117 | 115 | 115 | 114 | 116 | 119 | 118 | 116 | 112 | 112 | 110 | 110 |
| 50 | 77.4 | 80.3 | 79.7 | 79.1 | 77.1 | 76.4 | 74.8 | 74.6 | 72.8 | 73.0 | 72.4 | 73.9 | 76.9 | 76.0 | 74.7 | 71.9 | 71.0 | 69.5 | 69.6 |
| 55 | 43.8 | 45.8 | 45.0 | 44.6 | 42.8 | 42.5 | 41.1 | 41.2 | 40.1 | 40.7 | 40.4 | 41.9 | 44.3 | 43.5 | 43.2 | 41.0 | 40.2 | 38.7 | 38.8 |
| 60 | 19.2 | 20.7 | 20.0 | 19.7 | 18.3 | 18.0 | 17.1 | 17.2 | 16.6 | 17.1 | 17.1 | 18.3 | 20.0 | 19.7 | 19.5 | 17.8 | 17.3 | 16.3 | 16.4 |
| 65 | 11.1 | 11.9 | 11.7 | 11.3 | 10.6 | 10.3 | 9.80 | 9.68 | 9.46 | 9.61 | 9.77 | 10.5 | 11.5 | 11.6 | 11.4 | 10.8 | 10.3 | 9.73 | 9.48 |
| 70 | 6.43 | 6.97 | 6.81 | 6.61 | 6.19 | 6.03 | 5.72 | 5.68 | 5.48 | 5.55 | 5.62 | 6.10 | 6.77 | 6.89 | 6.86 | 6.44 | 6.16 | 5.73 | 5.58 |
| 75 | 3.08 | 3.35 | 3.29 | 3.20 | 3.03 | 2.98 | 2.81 | 2.80 | 2.65 | 2.69 | 2.69 | 2.90 | 3.19 | 3.26 | 3.28 | 3.09 | 2.93 | 2.72 | 2.64 |
| 80 | 0.74 | 0.82 | 0.77 | 0.81 | 0.73 | 0.75 | 0.71 | 0.73 | 0.64 | 0.63 | 0.55 | 0.58 | 0.61 | 0.61 | 0.63 | 0.56 | 0.56 | 0.52 | 0.54 |
| 85 | 0.17 | 0.15 | 0.18 | 0.15 | 0.17 | 0.15 | 0.17 | 0.14 | 0.16 | 0.14 | 0.15 | 0.14 | 0.09 | 0.11 | 0.09 | 0.11 | 0.09 | 0.11 | 0.09 |
| 90 | 0.15 | 0.15 | 0.15 | 0.15 | 0.15 | 0.14 | 0.15 | 0.14 | 0.14 | 0.14 | 0.14 | 0.14 | 0.07 | 0.08 | 0.08 | 0.08 | 0.07 | 0.08 | 0.07 |
| | | | | | | | | | | | | | | | | | | | |
| | | | | | | | | | | | | | | | | | | | |
| | | | | | | | | | | | | | | | | | | | |
| | | | | | | | | | | | | | | | | | | | |
| | | | | | | | | | | | | | | | | | | | |
| | | | | | | | | | | | | | | | | | | | |
| | | | | | | | | | | | | | | | | | | | |
| | | | | | | | | | | | | | | | | | | | |
| | | | | | | | | | | | | | | | | | | | |
| | | | | | | | | | | | | | | | | | | | |
| | | | | | | | | | | | | | | | | | | | |
| | | | | | | | | | | | | | | | | | | | |

C Range: 0 - 360DEG
 C Interval: 15.0DEG
 Test Speed: HIGH
 Temperature:25.3DEG
 Operators:Men Yongjian
 Test Date:2017-11-08

γ Range: 0 - 90DEG
 γ Interval: 1.0DEG
 Test System:EVERFINE GO-2000B_V1 SYSTEM V2.0.288
 Humidity:56%
 Test Distance:5.850m [K=1.0000]
 Remarks:

LUMINOUS DISTRIBUTION INTENSITY DATA

| | | |
|--|---------------------|-------------|
| Test:U:220.2V I:0.1291A P:27.68W PF:0.9667 Freq:49.90Hz Lamp Flux:2384.27x1 lm | | |
| NAME: T150-25W-930-60 | TYPE:Downlight | SERIAL No.: |
| SPEC.:3000K | DIM.: φ160mm*H100mm | |
| MFR.: NEKO LIGHTING AG | | |

Table--2

UNIT: cd

| C (DEG) γ (DEG) | 285 | 300 | 315 | 330 | 345 | | | | | | | | | | | | | | |
|--------------------|------|------|------|------|------|--|--|--|--|--|--|--|--|--|--|--|--|--|--|
| 0 | 2455 | 2455 | 2455 | 2455 | 2455 | | | | | | | | | | | | | | |
| 5 | 2468 | 2468 | 2467 | 2467 | 2468 | | | | | | | | | | | | | | |
| 10 | 2428 | 2429 | 2422 | 2422 | 2417 | | | | | | | | | | | | | | |
| 15 | 2307 | 2309 | 2297 | 2295 | 2288 | | | | | | | | | | | | | | |
| 20 | 2113 | 2115 | 2100 | 2100 | 2089 | | | | | | | | | | | | | | |
| 25 | 1844 | 1844 | 1825 | 1826 | 1815 | | | | | | | | | | | | | | |
| 30 | 1519 | 1520 | 1497 | 1501 | 1491 | | | | | | | | | | | | | | |
| 35 | 905 | 922 | 893 | 910 | 885 | | | | | | | | | | | | | | |
| 40 | 206 | 215 | 209 | 220 | 215 | | | | | | | | | | | | | | |
| 45 | 110 | 112 | 113 | 116 | 118 | | | | | | | | | | | | | | |
| 50 | 69.4 | 70.8 | 71.6 | 73.6 | 75.1 | | | | | | | | | | | | | | |
| 55 | 38.2 | 39.4 | 39.7 | 41.3 | 42.2 | | | | | | | | | | | | | | |
| 60 | 15.9 | 16.6 | 16.5 | 17.6 | 18.3 | | | | | | | | | | | | | | |
| 65 | 9.24 | 9.25 | 9.34 | 9.79 | 10.3 | | | | | | | | | | | | | | |
| 70 | 5.34 | 5.33 | 5.38 | 5.68 | 5.95 | | | | | | | | | | | | | | |
| 75 | 2.51 | 2.55 | 2.59 | 2.76 | 2.90 | | | | | | | | | | | | | | |
| 80 | 0.53 | 0.57 | 0.60 | 0.67 | 0.71 | | | | | | | | | | | | | | |
| 85 | 0.11 | 0.09 | 0.12 | 0.10 | 0.12 | | | | | | | | | | | | | | |
| 90 | 0.08 | 0.08 | 0.08 | 0.08 | 0.08 | | | | | | | | | | | | | | |

C Range: 0 - 360DEG
 C Interval: 15.0DEG
 Test Speed: HIGH
 Temperature:25.3DEG
 Operators:Men Yongjian
 Test Date:2017-11-08

γ Range: 0 - 90DEG
 γ Interval: 1.0DEG
 Test System:EVERFINE GO-2000B_V1 SYSTEM V2.0.288
 Humidity:56%
 Test Distance:5.850m [K=1.0000]
 Remarks: