

T100-13W-TW-965-50



| | | |
|---------------------|---------|--------------------------|
| Light Output Ratio: | 100.0% | |
| Luminaire Power: | 12.48 W | |
| SHR Nominal: | 0.75 | Calculated using the TM5 |
| SHR Maximum: | 0.80 | fine grid method. |

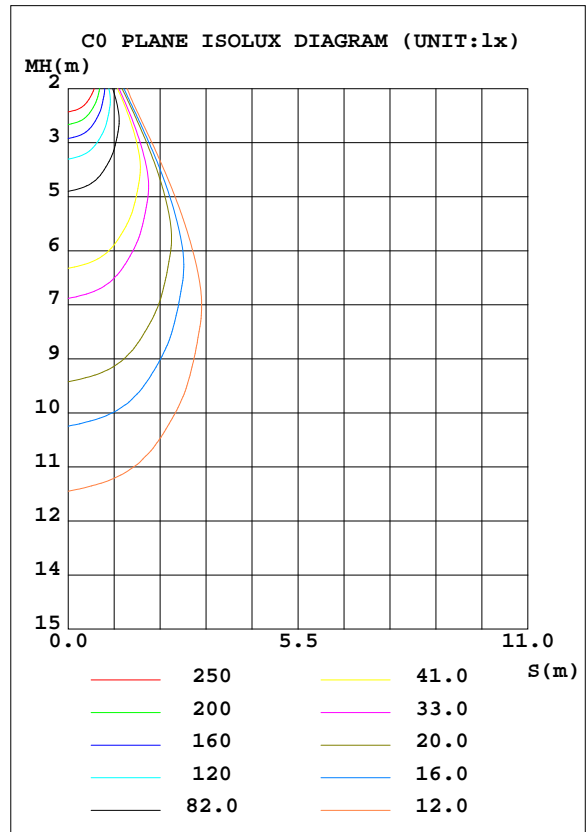
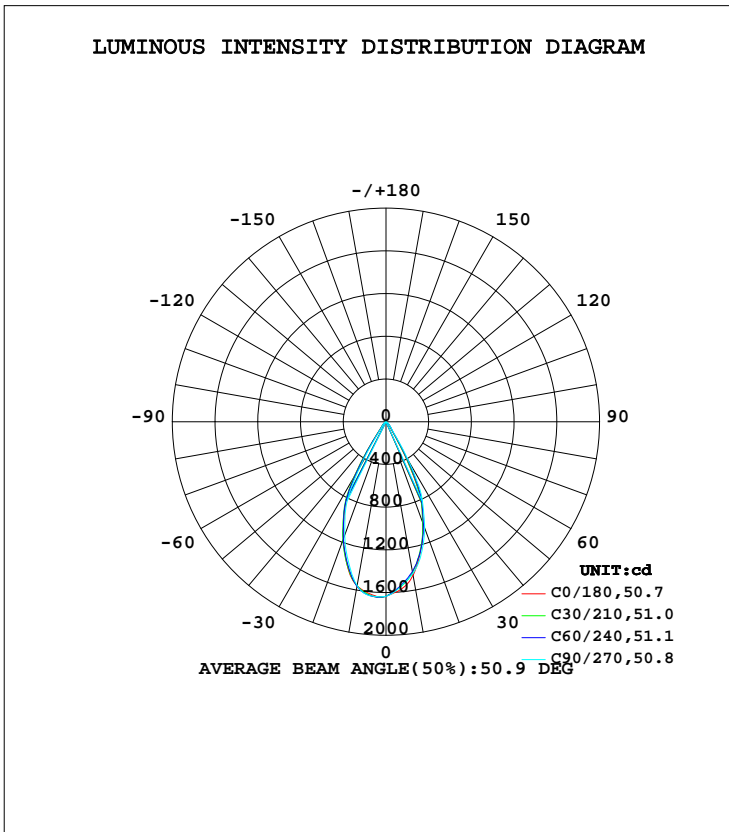
C Range: 0 - 360DEG
C Interval: 15.0DEG
Test Speed: HIGH
Temperature: 25.3DEG
Operators: Jason
Test Date: 2020-08-28

γ Range: 0 - 90DEG
 γ Interval: 0.5DEG
Test System: EVERFINE GO-2000B_V1 SYSTEM V2.0.362
Humidity: 58%
Test Distance: 5.850m [K=1.0000]
Remarks:

LUMINAIRE PHOTOMETRIC TEST REPORT

| | | |
|---|--------------------|-------------|
| Test:U:35.65V I:0.3500A P:12.48W PF:1.000 Freq:0Hz Lamp Flux:1046.91x1 lm | | |
| NAME: T100-13W-TW-965-50 | TYPE:Downlight | SERIAL No.: |
| SPEC.:6500K | DIM.: φ110mm*H79mm | |
| MFR.: NEKO LIGHTING AG | | |

| DATA OF LAMP | | PHOTOMETRIC DATA Eff: 83.90 lm/W | | | |
|------------------|-----------------|----------------------------------|--------|--------------------|----------|
| MODEL | BRIDGELUX-6500K | I _{max} (cd) | 1646 | S/MH(C0/180) | 0.81 |
| NOMINAL POWER(W) | 13 | LOR(%) | 100.0 | S/MH(C90/270) | 0.78 |
| RATED VOLTAGE(V) | 36 | TOTAL FLUX(lm) | 1046.9 | η UP, DN(C0-180) | 0.0,48.6 |
| NOMINAL FLUX(lm) | 1046.91 | CIE CLASS | DIRECT | η UP, DN(C180-360) | 0.0,51.4 |
| LAMPS INSIDE | 1 | η up(%) | 0.0 | CIBSE SHR NOM | 0.75 |
| TEST VOLTAGE(V) | 35.65 | η down(%) | 100.0 | CIBSE SHR MAX | 0.80 |



C Range: 0 - 360DEG
 C Interval: 15.0DEG
 Test Speed: HIGH
 Temperature:25.3DEG
 Operators:Jason
 Test Date:2020-08-28

γ Range: 0 - 90DEG
 γ Interval: 0.5DEG
 Test System:EVERFINE GO-2000B_V1 SYSTEM V2.0.362
 Humidity:58%
 Test Distance:5.850m [K=1.0000]
 Remarks:

ZONAL FLUX DIAGRAM

ZONAL FLUX DIAGRAM:

| γ | C0 | C45 | C90 | C135 | C180 | C225 | C270 | C315 | γ | Φ zone | Φ total | %lum,lamp |
|-----|-----------------------|--------|--------|--------|--------|--------|--------|--------|---------|---------|---------|-----------|
| 10 | 1459 | 1429 | 1444 | 1515 | 1561 | 1558 | 1559 | 1511 | 0- 10 | 149.6 | 149.6 | 14.3,14.3 |
| 20 | 1007 | 1017 | 1057 | 1114 | 1169 | 1171 | 1130 | 1054 | 10- 20 | 366.1 | 515.7 | 49.3,49.3 |
| 30 | 300.0 | 351.4 | 422.0 | 524.9 | 591.3 | 574.2 | 485.3 | 357.0 | 20- 30 | 367.2 | 882.9 | 84.3,84.3 |
| 40 | 56.27 | 65.76 | 70.66 | 74.32 | 74.79 | 69.93 | 58.66 | 53.25 | 30- 40 | 106.6 | 989.5 | 94.5,94.5 |
| 50 | 23.05 | 28.50 | 30.01 | 31.82 | 32.17 | 30.55 | 24.86 | 21.71 | 40- 50 | 34.09 | 1024 | 97.8,97.8 |
| 60 | 7.618 | 9.349 | 9.379 | 9.298 | 9.802 | 9.671 | 7.926 | 7.001 | 50- 60 | 14.69 | 1038 | 99.2,99.2 |
| 70 | 3.070 | 3.882 | 3.939 | 3.999 | 4.163 | 4.045 | 3.288 | 2.835 | 60- 70 | 5.858 | 1044 | 99.7,99.7 |
| 80 | 0.7933 | 1.045 | 1.149 | 1.194 | 1.237 | 1.159 | 0.8474 | 0.7081 | 70- 80 | 2.278 | 1046 | 100,100 |
| 90 | 0.0676 | 0.0677 | 0.0810 | 0.1117 | 0.1025 | 0.0502 | 0.0416 | 0.0416 | 80- 90 | 0.4672 | 1047 | 100,100 |
| 100 | | | | | | | | | 90-100 | | | |
| 110 | | | | | | | | | 100-110 | | | |
| 120 | | | | | | | | | 110-120 | | | |
| 130 | | | | | | | | | 120-130 | | | |
| 140 | | | | | | | | | 130-140 | | | |
| 150 | | | | | | | | | 140-150 | | | |
| 160 | | | | | | | | | 150-160 | | | |
| 170 | | | | | | | | | 160-170 | | | |
| 180 | | | | | | | | | 170-180 | | | |
| DEG | LUMINOUS INTENSITY:cd | | | | | | | | | UNIT:lm | | |

Conical surface Flux(90deg): 1009.3 lm

%lum = 96.4%
%lamp = 96.4%

Conical surface Flux(120deg): 1038.3 lm

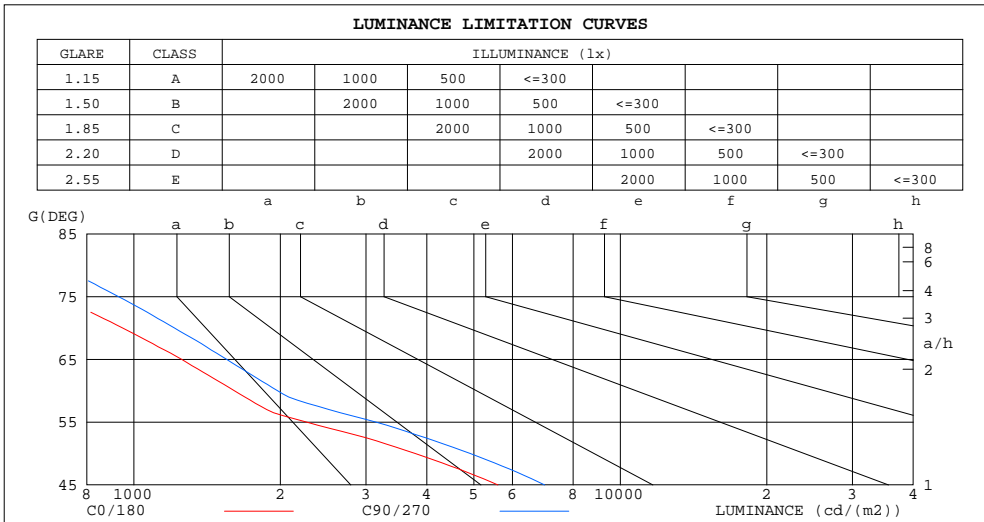
%lum = 99.2%
%lamp = 99.2%

C Range: 0 - 360DEG
C Interval: 15.0DEG
Test Speed: HIGH
Temperature:25.3DEG
Operators:Jason
Test Date:2020-08-28

γ Range: 0 - 90DEG
γ Interval: 0.5DEG
Test System:EVERFINE GO-2000B_V1 SYSTEM V2.0.362
Humidity:58%
Test Distance:5.850m [K=1.0000]
Remarks:

LUMINANCE LIMITATION CURVES

| | | |
|---|--------------------|-------------|
| Test:U:35.65V I:0.3500A P:12.48W PF:1.000 Freq:0Hz Lamp Flux:1046.91x1 lm | | |
| NAME: T100-13W-TW-965-50 | TYPE:Downlight | SERIAL No.: |
| SPEC.:6500K | DIM.: φ110mm*H79mm | |
| MFR.: NEKO LIGHTING AG | | |



| LUMINANCE cd/(m2) | | |
|-------------------|--------|---------|
| G(DEG) | C0/180 | C90/270 |
| 85 | 258 | 551 |
| 80 | 482 | 696 |
| 75 | 695 | 929 |
| 70 | 947 | 1211 |
| 65 | 1253 | 1551 |
| 60 | 1608 | 1973 |
| 55 | 2263 | 3142 |
| 50 | 3784 | 4910 |
| 45 | 5603 | 6991 |

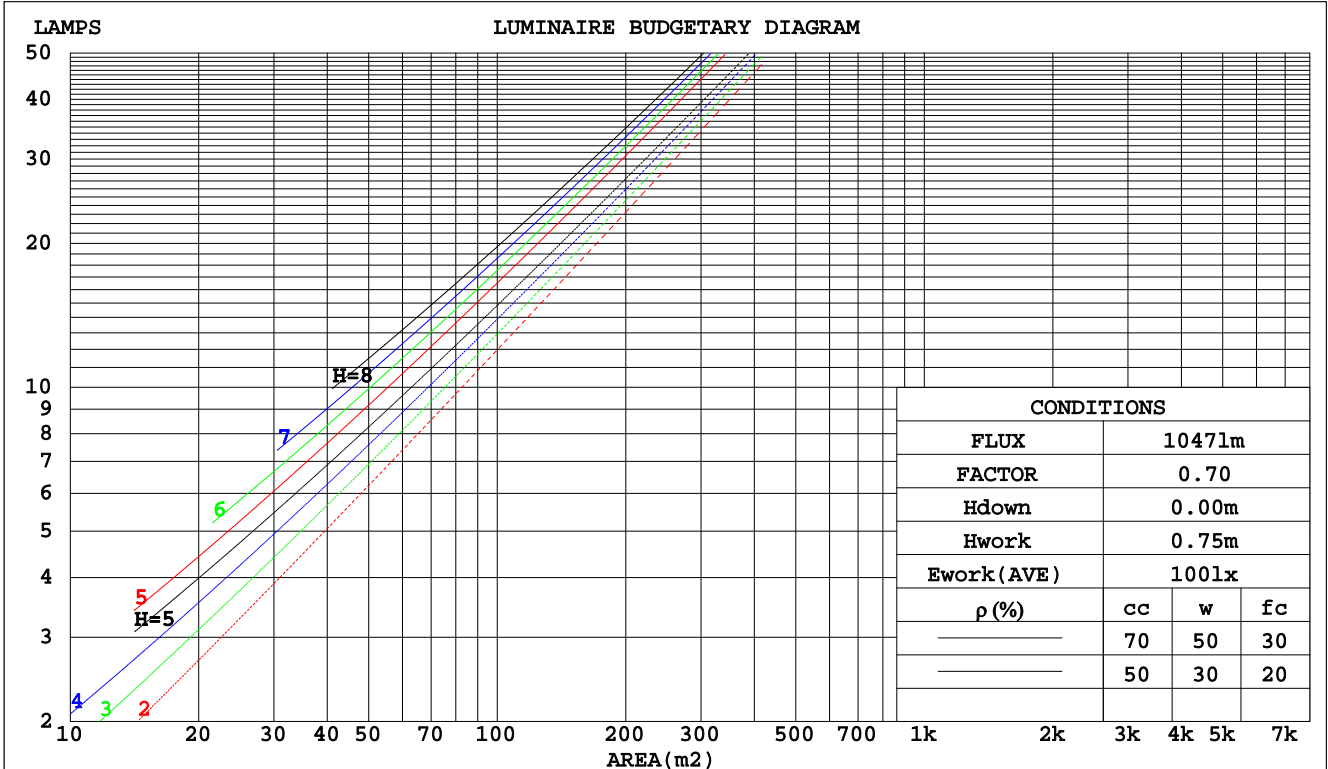
C Range: 0 - 360DEG
 C Interval: 15.0DEG
 Test Speed: HIGH
 Temperature:25.3DEG
 Operators:Jason
 Test Date:2020-08-28

γ Range: 0 - 90DEG
 γ Interval: 0.5DEG
 Test System:EVERFINE GO-2000B_V1 SYSTEM V2.0.362
 Humidity:58%
 Test Distance:5.850m [K=1.0000]
 Remarks:

CU AND LUMINAIRE BUDGETARY ESTIMATE DIAGRAM

| | | |
|---|--------------------|-------------|
| Test:U:35.65V I:0.3500A P:12.48W PF:1.000 Freq:0Hz Lamp Flux:1046.91x1 lm | | |
| NAME: T100-13W-TW-965-50 | TYPE:Downlight | SERIAL No.: |
| SPEC.:6500K | DIM.: φ110mm*H79mm | |
| MFR.: NEKO LIGHTING AG | | |

| ρcc | 80% | | | 70% | | | 50% | | | 30% | | | 10% | | | 0 |
|------|---------------------------------|------|------|------|------|------|------|------|------|------|------|------|------|------|------|------|
| ρw | 50% | 30% | 10% | 50% | 30% | 10% | 50% | 30% | 10% | 50% | 30% | 10% | 50% | 30% | 10% | 0 |
| ρfc | 20% | | | 20% | | | 20% | | | 20% | | | 20% | | | 0 |
| RCR | RCR:Room Cavity Ratio | | | | | | | | | | | | | | | |
| | Coefficients of Utilization(CU) | | | | | | | | | | | | | | | |
| 0.0 | 1.19 | 1.19 | 1.19 | 1.16 | 1.16 | 1.16 | 1.11 | 1.11 | 1.11 | 1.06 | 1.06 | 1.06 | 1.02 | 1.02 | 1.02 | 1.00 |
| 1.0 | 1.11 | 1.09 | 1.07 | 1.09 | 1.07 | 1.05 | 1.05 | 1.03 | 1.02 | 1.01 | 1.00 | .99 | .98 | .97 | .96 | .94 |
| 2.0 | 1.04 | 1.01 | .97 | 1.03 | .99 | .96 | .99 | .97 | .94 | .96 | .94 | .92 | .94 | .92 | .90 | .89 |
| 3.0 | .98 | .93 | .90 | .97 | .92 | .89 | .94 | .91 | .88 | .92 | .89 | .86 | .89 | .87 | .85 | .83 |
| 4.0 | .92 | .87 | .83 | .91 | .87 | .83 | .89 | .85 | .82 | .87 | .84 | .81 | .85 | .82 | .80 | .79 |
| 5.0 | .87 | .82 | .78 | .86 | .81 | .78 | .85 | .80 | .77 | .83 | .79 | .76 | .81 | .78 | .76 | .74 |
| 6.0 | .83 | .77 | .73 | .82 | .77 | .73 | .80 | .76 | .73 | .79 | .75 | .72 | .78 | .74 | .72 | .70 |
| 7.0 | .78 | .73 | .69 | .78 | .73 | .69 | .77 | .72 | .69 | .75 | .71 | .68 | .74 | .71 | .68 | .67 |
| 8.0 | .75 | .69 | .65 | .74 | .69 | .65 | .73 | .68 | .65 | .72 | .68 | .65 | .71 | .67 | .64 | .63 |
| 9.0 | .71 | .66 | .62 | .70 | .65 | .62 | .70 | .65 | .62 | .69 | .64 | .61 | .68 | .64 | .61 | .60 |
| 10.0 | .68 | .62 | .59 | .67 | .62 | .59 | .66 | .62 | .59 | .66 | .61 | .58 | .65 | .61 | .58 | .57 |



C Range: 0 - 360DEG
 C Interval: 15.0DEG
 Test Speed: HIGH
 Temperature: 25.3DEG
 Operators: Jason
 Test Date: 2020-08-28

γ Range: 0 - 90DEG
 γ Interval: 0.5DEG
 Test System: EVERFINE GO-2000B_V1 SYSTEM V2.0.362
 Humidity: 58%
 Test Distance: 5.850m [K=1.0000]
 Remarks:

WEC AND CCEC

| | | |
|---|--------------------|-------------|
| Test:U:35.65V I:0.3500A P:12.48W PF:1.000 Freq:0Hz Lamp Flux:1046.91x1 lm | | |
| NAME: T100-13W-TW-965-50 | TYPE:Downlight | SERIAL No.: |
| SPEC.:6500K | DIM.: φ110mm*H79mm | |
| MFR.: NEKO LIGHTING AG | | |

| ρcc | 80% | | | 70% | | | 50% | | | 30% | | | 10% | | | 0 |
|------|-----------------------|------|------|------|------|------|---------------------------------|------|------|------|------|------|------|------|------|---|
| ρw | 50% | 30% | 10% | 50% | 30% | 10% | 50% | 30% | 10% | 50% | 30% | 10% | 50% | 30% | 10% | 0 |
| ρfc | 20% | | | 20% | | | 20% | | | 20% | | | 20% | | | 0 |
| RCR | RCR:Room Cavity Ratio | | | | | | Wall Exitance Coefficients(WEC) | | | | | | | | | |
| 0.0 | | | | | | | | | | | | | | | | |
| 1.0 | .167 | .095 | .030 | .161 | .092 | .029 | .148 | .085 | .027 | .137 | .079 | .025 | .126 | .073 | .024 | |
| 2.0 | .159 | .087 | .027 | .153 | .084 | .026 | .143 | .079 | .025 | .133 | .075 | .023 | .124 | .070 | .022 | |
| 3.0 | .151 | .080 | .024 | .146 | .078 | .024 | .137 | .074 | .023 | .129 | .071 | .022 | .121 | .067 | .021 | |
| 4.0 | .143 | .074 | .022 | .139 | .073 | .021 | .131 | .070 | .021 | .124 | .067 | .020 | .117 | .064 | .019 | |
| 5.0 | .136 | .069 | .020 | .132 | .068 | .020 | .126 | .065 | .019 | .120 | .063 | .019 | .114 | .061 | .018 | |
| 6.0 | .129 | .065 | .019 | .126 | .064 | .018 | .121 | .062 | .018 | .115 | .060 | .018 | .110 | .058 | .017 | |
| 7.0 | .124 | .061 | .017 | .121 | .060 | .017 | .116 | .059 | .017 | .111 | .057 | .017 | .107 | .055 | .016 | |
| 8.0 | .118 | .058 | .016 | .116 | .057 | .016 | .111 | .056 | .016 | .107 | .054 | .016 | .103 | .053 | .015 | |
| 9.0 | .113 | .055 | .015 | .111 | .054 | .015 | .107 | .053 | .015 | .103 | .052 | .015 | .100 | .051 | .015 | |
| 10.0 | .109 | .052 | .014 | .107 | .052 | .014 | .103 | .051 | .014 | .100 | .050 | .014 | .097 | .049 | .014 | |

| ρcc | 80% | | | 70% | | | 50% | | | 30% | | | 10% | | | 0 |
|------|-----------------------|------|------|------|------|------|--|------|------|------|------|------|------|------|------|---|
| ρw | 50% | 30% | 10% | 50% | 30% | 10% | 50% | 30% | 10% | 50% | 30% | 10% | 50% | 30% | 10% | 0 |
| ρfc | 20% | | | 20% | | | 20% | | | 20% | | | 20% | | | 0 |
| RCR | RCR:Room Cavity Ratio | | | | | | Ceiling Cavity Exitance Coefficients(CCEC) | | | | | | | | | |
| 0.0 | .190 | .190 | .190 | .163 | .163 | .163 | .111 | .111 | .111 | .064 | .064 | .064 | .020 | .020 | .020 | |
| 1.0 | .170 | .157 | .146 | .146 | .135 | .125 | .100 | .093 | .087 | .057 | .054 | .050 | .018 | .017 | .016 | |
| 2.0 | .155 | .133 | .114 | .132 | .114 | .099 | .091 | .079 | .069 | .052 | .046 | .040 | .017 | .015 | .013 | |
| 3.0 | .141 | .113 | .091 | .121 | .098 | .079 | .083 | .068 | .055 | .048 | .040 | .033 | .015 | .013 | .011 | |
| 4.0 | .131 | .099 | .074 | .112 | .085 | .064 | .077 | .059 | .045 | .045 | .035 | .027 | .014 | .011 | .009 | |
| 5.0 | .122 | .087 | .061 | .104 | .075 | .053 | .072 | .052 | .038 | .042 | .031 | .022 | .013 | .010 | .007 | |
| 6.0 | .114 | .077 | .051 | .098 | .067 | .045 | .067 | .047 | .032 | .039 | .028 | .019 | .013 | .009 | .006 | |
| 7.0 | .107 | .070 | .043 | .092 | .060 | .038 | .064 | .042 | .027 | .037 | .025 | .016 | .012 | .008 | .005 | |
| 8.0 | .101 | .063 | .037 | .087 | .055 | .033 | .060 | .039 | .023 | .035 | .023 | .014 | .011 | .007 | .005 | |
| 9.0 | .096 | .058 | .032 | .083 | .050 | .028 | .057 | .035 | .020 | .033 | .021 | .012 | .011 | .007 | .004 | |
| 10.0 | .091 | .054 | .028 | .079 | .047 | .025 | .055 | .033 | .018 | .032 | .019 | .010 | .010 | .006 | .003 | |

C Range: 0 - 360DEG
 C Interval: 15.0DEG
 Test Speed: HIGH
 Temperature:25.3DEG
 Operators:Jason
 Test Date:2020-08-28

γ Range: 0 - 90DEG
 γ Interval: 0.5DEG
 Test System:EVERFINE GO-2000B_V1 SYSTEM V2.0.362
 Humidity:58%
 Test Distance:5.850m [K=1.0000]
 Remarks:

UGR(Unified Glare Rating) Table

| | | |
|---|--------------------|-------------|
| Test:U:35.65V I:0.3500A P:12.48W PF:1.000 Freq:0Hz Lamp Flux:1046.91x1 lm | | |
| NAME: T100-13W-TW-965-50 | TYPE:Downlight | SERIAL No.: |
| SPEC.:6500K | DIM.: φ110mm*H79mm | |
| MFR.: NEKO LIGHTING AG | | |

| | | | | | | | | | | |
|--|------------------|------|------|------|------|----------------|------|------|------|------|
| ceiling/cavity | 0.7 | 0.7 | 0.5 | 0.5 | 0.3 | 0.7 | 0.7 | 0.5 | 0.5 | 0.3 |
| walls | 0.5 | 0.3 | 0.5 | 0.3 | 0.3 | 0.5 | 0.3 | 0.5 | 0.3 | 0.3 |
| working plane | 0.2 | 0.2 | 0.2 | 0.2 | 0.2 | 0.2 | 0.2 | 0.2 | 0.2 | 0.2 |
| Room dimensions | Viewed crosswise | | | | | Viewed endwise | | | | |
| x = 2H y = 2H | 10.7 | 11.5 | 10.9 | 11.7 | 11.9 | 12.1 | 13.0 | 12.3 | 13.1 | 13.3 |
| 3H | 10.7 | 11.5 | 10.9 | 11.7 | 11.9 | 12.1 | 12.9 | 12.3 | 13.1 | 13.3 |
| 4H | 10.7 | 11.4 | 10.9 | 11.6 | 11.9 | 12.1 | 12.8 | 12.3 | 13.0 | 13.3 |
| 6H | 10.6 | 11.3 | 10.9 | 11.6 | 11.8 | 12.0 | 12.7 | 12.3 | 13.0 | 13.2 |
| 8H | 10.6 | 11.3 | 10.9 | 11.5 | 11.8 | 12.0 | 12.7 | 12.3 | 12.9 | 13.2 |
| 12H | 10.5 | 11.2 | 10.8 | 11.4 | 11.7 | 12.0 | 12.6 | 12.3 | 12.9 | 13.1 |
| 4H 2H | 10.6 | 11.4 | 10.9 | 11.6 | 11.8 | 12.0 | 12.7 | 12.2 | 12.9 | 13.2 |
| 3H | 10.7 | 11.3 | 11.0 | 11.6 | 11.9 | 12.0 | 12.7 | 12.3 | 12.9 | 13.2 |
| 4H | 10.7 | 11.3 | 11.0 | 11.6 | 11.9 | 12.0 | 12.6 | 12.4 | 12.9 | 13.2 |
| 6H | 10.6 | 11.2 | 11.0 | 11.5 | 11.8 | 12.0 | 12.5 | 12.4 | 12.8 | 13.2 |
| 8H | 10.6 | 11.1 | 11.0 | 11.4 | 11.8 | 12.0 | 12.4 | 12.3 | 12.8 | 13.2 |
| 12H | 10.6 | 11.0 | 11.0 | 11.4 | 11.8 | 11.9 | 12.4 | 12.3 | 12.7 | 13.1 |
| 8H 4H | 10.6 | 11.1 | 11.0 | 11.4 | 11.8 | 11.9 | 12.4 | 12.3 | 12.8 | 13.1 |
| 6H | 10.6 | 11.0 | 11.0 | 11.4 | 11.8 | 11.9 | 12.3 | 12.3 | 12.7 | 13.1 |
| 8H | 10.5 | 10.9 | 11.0 | 11.3 | 11.8 | 11.9 | 12.2 | 12.3 | 12.6 | 13.1 |
| 12H | 10.5 | 10.8 | 11.0 | 11.2 | 11.7 | 11.8 | 12.1 | 12.3 | 12.6 | 13.0 |
| 12H 4H | 10.6 | 11.0 | 11.0 | 11.4 | 11.8 | 11.9 | 12.3 | 12.3 | 12.7 | 13.1 |
| 6H | 10.5 | 10.9 | 11.0 | 11.3 | 11.7 | 11.8 | 12.2 | 12.3 | 12.6 | 13.1 |
| 8H | 10.5 | 10.8 | 11.0 | 11.3 | 11.7 | 11.8 | 12.1 | 12.3 | 12.6 | 13.0 |
| Variations with the observer position at spacings: | | | | | | | | | | |
| S = 1.0H | + 1.7 / - 3.3 | | | | | + 1.8 / - 3.0 | | | | |
| 1.5H | + 2.0 / - 2.4 | | | | | + 2.4 / - 2.5 | | | | |
| 2.0H | + 3.4 / - 3.0 | | | | | + 3.5 / - 3.0 | | | | |

CIE Pub.117, 1047 lm Total Lamp Luminous Flux Correct (8log(F/F0) = 0.2)

C Range: 0 - 360DEG
 C Interval: 15.0DEG
 Test Speed: HIGH
 Temperature:25.3DEG
 Operators:Jason
 Test Date:2020-08-28

γ Range: 0 - 90DEG
 γ Interval: 0.5DEG
 Test System:EVERFINE GO-2000B_V1 SYSTEM V2.0.362
 Humidity:58%
 Test Distance:5.850m [K=1.0000]
 Remarks:

UTILIZATION FACTORS TABLE

| | | |
|---|--------------------|-------------|
| Test:U:35.65V I:0.3500A P:12.48W PF:1.000 Freq:0Hz Lamp Flux:1046.91x1 lm | | |
| NAME: T100-13W-TW-965-50 | TYPE:Downlight | SERIAL No.: |
| SPEC.:6500K | DIM.: φ110mm*H79mm | |
| MFR.: NEKO LIGHTING AG | | |

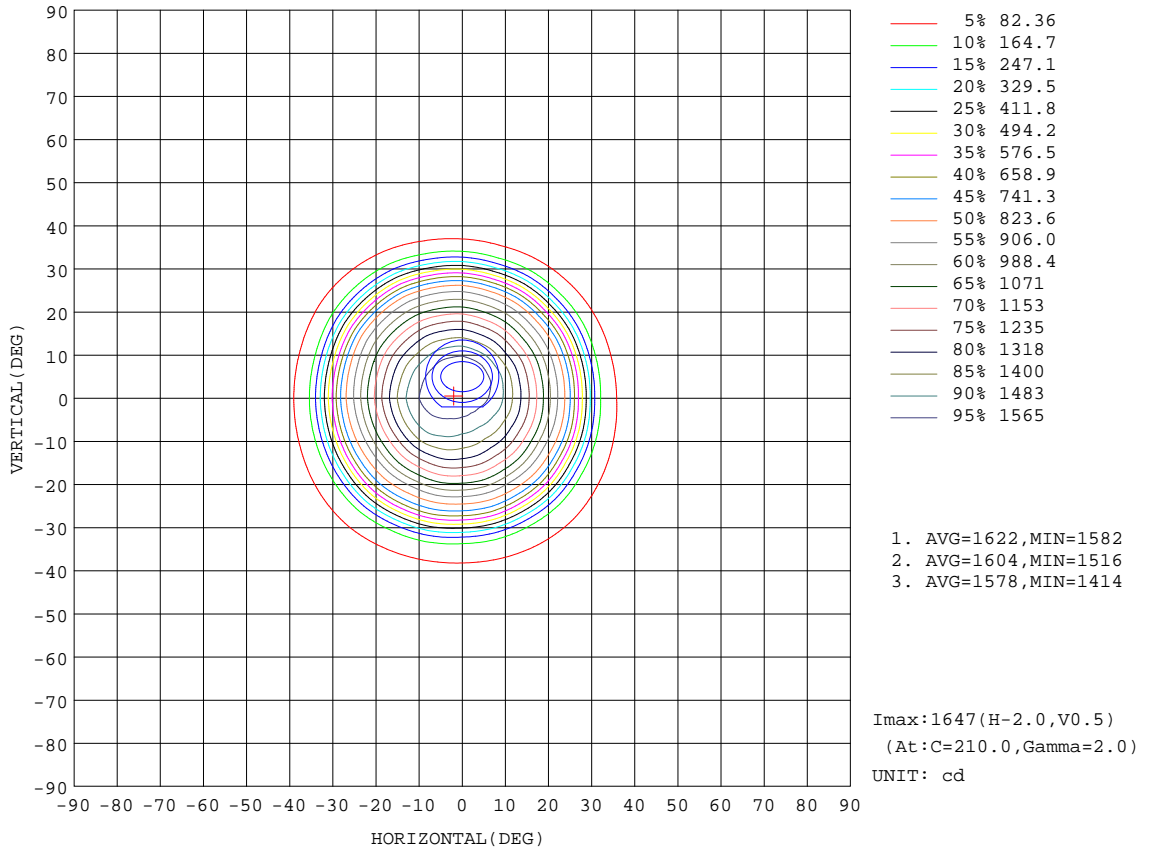
| REFLECTANCE | | | | | | | | | | |
|----------------------------------|---|-----|-----------|-----|-----|-----|---------------|-----|-----|--------|
| Ceiling | 0.8 | 0.8 | 0.8 | 0.7 | 0.7 | 0.7 | 0.5 | 0.5 | 0.5 | 0 |
| Walls | 0.7 | 0.5 | 0.3 | 0.7 | 0.5 | 0.3 | 0.7 | 0.5 | 0.3 | 0 |
| Working plane | 0.2 | 0.2 | 0.2 | 0.2 | 0.2 | 0.2 | 0.2 | 0.2 | 0.2 | 0 |
| ROOM INDEX | UTILIZATION FACTORS(PERCENT) $k(RI) \times RCR = 5$ | | | | | | | | | |
| k = 0.60 | 88 | 82 | 78 | 88 | 82 | 78 | 87 | 81 | 78 | 74 |
| 0.80 | 95 | 90 | 86 | 95 | 89 | 86 | 94 | 89 | 86 | 82 |
| 1.00 | 100 | 94 | 91 | 99 | 94 | 90 | 97 | 94 | 90 | 86 |
| 1.25 | 104 | 99 | 95 | 103 | 98 | 95 | 101 | 97 | 94 | 90 |
| 1.50 | 106 | 102 | 98 | 105 | 101 | 98 | 103 | 99 | 97 | 92 |
| 2.00 | 109 | 105 | 102 | 107 | 104 | 101 | 105 | 102 | 99 | 94 |
| 2.50 | 110 | 107 | 104 | 109 | 106 | 103 | 106 | 103 | 101 | 95 |
| 3.00 | 112 | 109 | 106 | 110 | 107 | 105 | 107 | 105 | 103 | 96 |
| 4.00 | 114 | 111 | 109 | 112 | 110 | 108 | 108 | 107 | 105 | 98 |
| 5.00 | 115 | 113 | 111 | 113 | 111 | 110 | 109 | 108 | 107 | 99 |
| ROOM INDEX | UF(total) | | | | | | | | | Direct |
| According to DIN EN 13032-2 2004 | | | Suspended | | | | SHRNOM = 1.25 | | | |

C Range: 0 - 360DEG
 C Interval: 15.0DEG
 Test Speed: HIGH
 Temperature:25.3DEG
 Operators:Jason
 Test Date:2020-08-28

γ Range: 0 - 90DEG
 γ Interval: 0.5DEG
 Test System:EVERFINE GO-2000B_V1 SYSTEM V2.0.362
 Humidity:58%
 Test Distance:5.850m [K=1.0000]
 Remarks:

ISOCANDELA DIAGRAM

| | | |
|---|--------------------|-------------|
| Test:U:35.65V I:0.3500A P:12.48W PF:1.000 Freq:0Hz Lamp Flux:1046.91x1 lm | | |
| NAME: T100-13W-TW-965-50 | TYPE:Downlight | SERIAL No.: |
| SPEC.:6500K | DIM.: φ110mm*H79mm | |
| MFR.: NEKO LIGHTING AG | | |



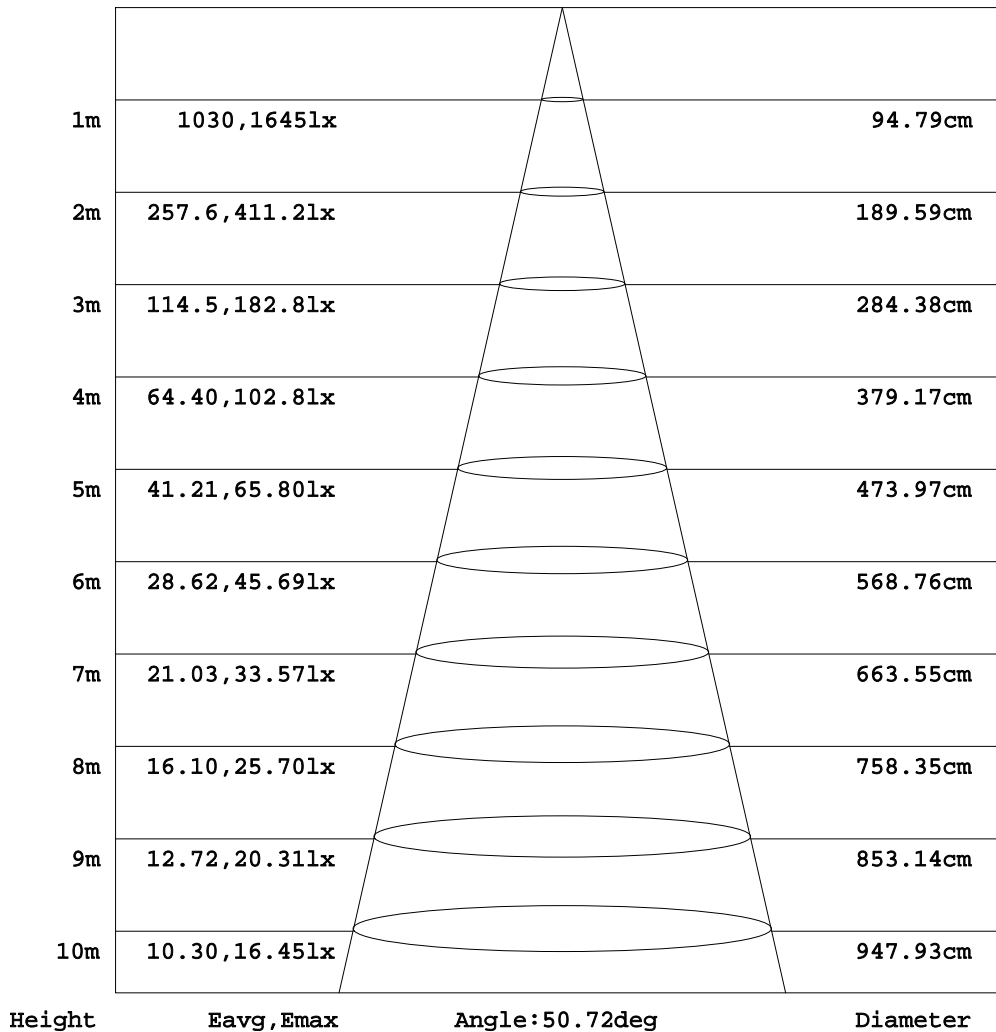
C Range: 0 - 360DEG
C Interval: 15.0DEG
Test Speed: HIGH
Temperature:25.3DEG
Operators:Jason
Test Date:2020-08-28

γ Range: 0 - 90DEG
γ Interval: 0.5DEG
Test System:EVERFINE GO-2000B_V1 SYSTEM V2.0.362
Humidity:58%
Test Distance:5.850m [K=1.0000]
Remarks:

AAI Figure

| | | |
|---|--------------------|-------------|
| Test:U:35.65V I:0.3500A P:12.48W PF:1.000 Freq:0Hz Lamp Flux:1046.91x1 lm | | |
| NAME: T100-13W-TW-965-50 | TYPE:Downlight | SERIAL No.: |
| SPEC.:6500K | DIM.: φ110mm*H79mm | |
| MFR.: NEKO LIGHTING AG | | |

Flux out:736.4 lm



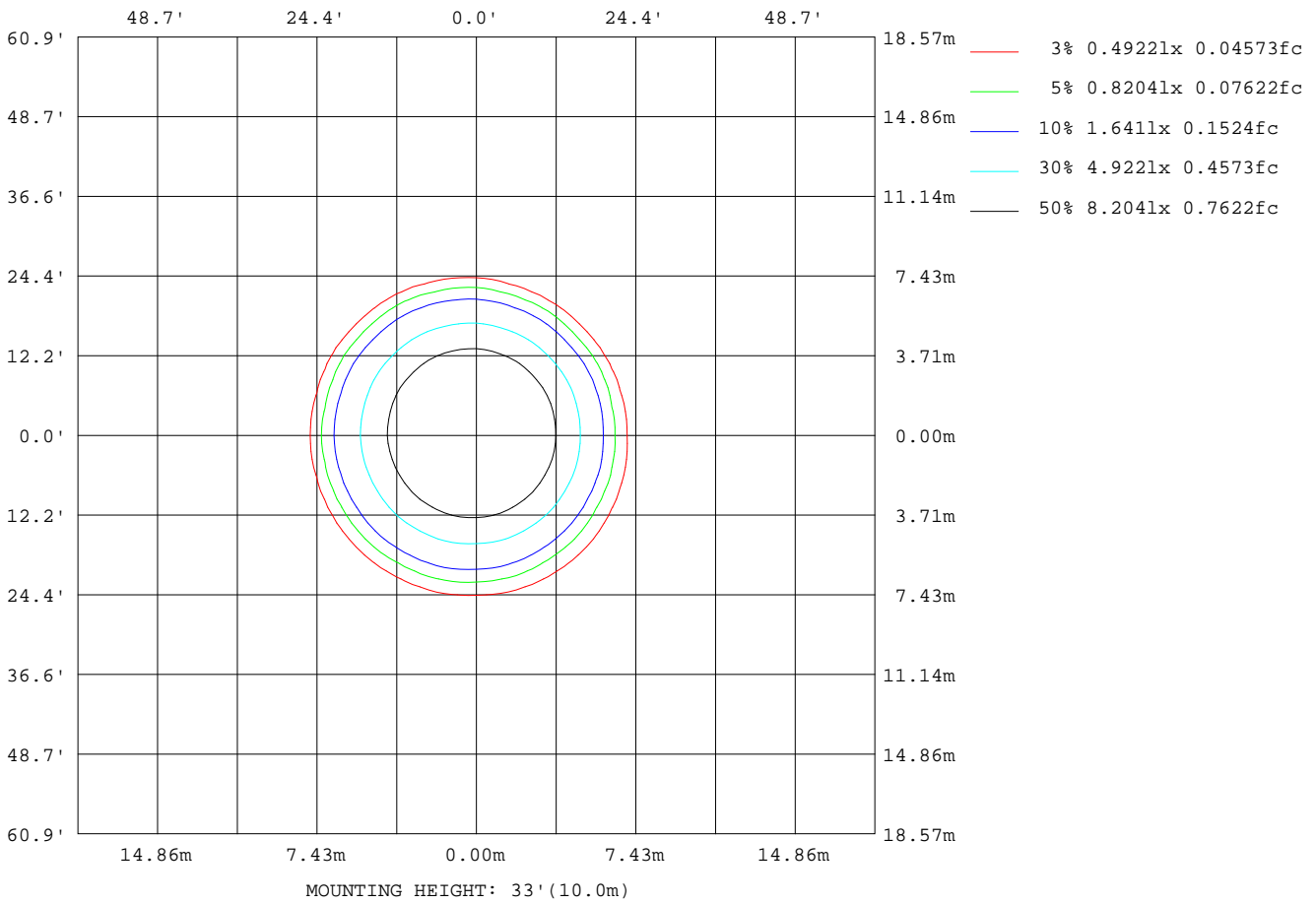
Note:The Curves indicate the illuminated area and the average illumination when the luminaire is at different distance.

C Range: 0 - 360DEG
C Interval: 15.0DEG
Test Speed: HIGH
Temperature:25.3DEG
Operators:Jason
Test Date:2020-08-28

γ Range: 0 - 90DEG
γ Interval: 0.5DEG
Test System:EVERFINE GO-2000B_V1 SYSTEM V2.0.362
Humidity:58%
Test Distance:5.850m [K=1.0000]
Remarks:

ISOLUX DIAGRAM

| | | |
|---|--------------------|-------------|
| Test:U:35.65V I:0.3500A P:12.48W PF:1.000 Freq:0Hz Lamp Flux:1046.9lx1 lm | | |
| NAME: T100-13W-TW-965-50 | TYPE:Downlight | SERIAL No.: |
| SPEC.:6500K | DIM.: φ110mm*H79mm | |
| MFR.: NEKO LIGHTING AG | | |



C Range: 0 - 360DEG
 C Interval: 15.0DEG
 Test Speed: HIGH
 Temperature:25.3DEG
 Operators:Jason
 Test Date:2020-08-28

γ Range: 0 - 90DEG
 γ Interval: 0.5DEG
 Test System:EVERFINE GO-2000B_V1 SYSTEM V2.0.362
 Humidity:58%
 Test Distance:5.850m [K=1.0000]
 Remarks:

LED Avg.L Report

| | | |
|---|--------------------|-------------|
| Test:U:35.65V I:0.3500A P:12.48W PF:1.000 Freq:0Hz Lamp Flux:1046.91x1 lm | | |
| NAME: T100-13W-TW-965-50 | TYPE:Downlight | SERIAL No.: |
| SPEC.:6500K | DIM.: φ110mm*H79mm | |
| MFR.: NEKO LIGHTING AG | | |

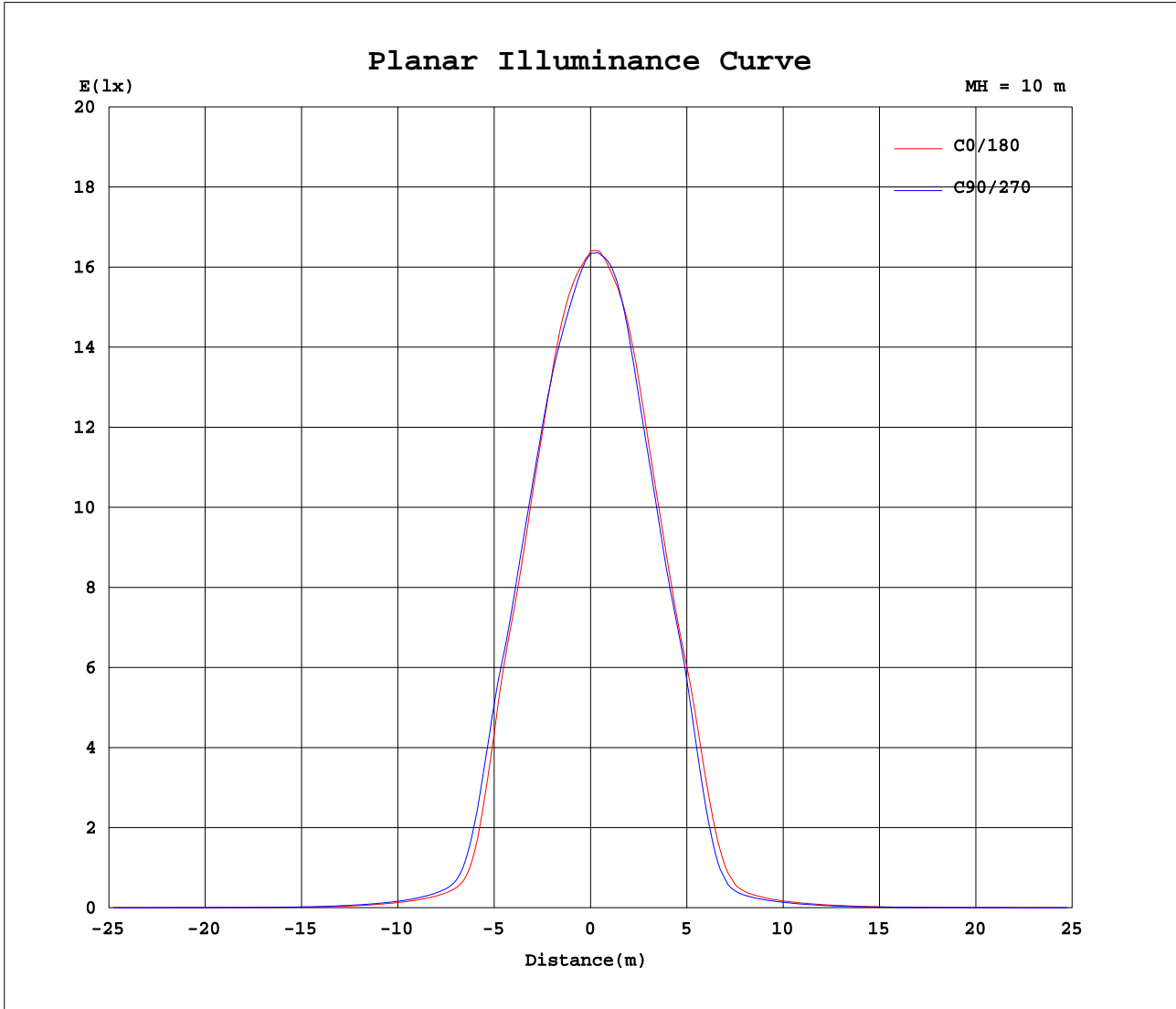
| AvgL | cd/m2 |
|----------------|-------|
| L_0~180(65)av | 1435 |
| L_0~180(75)av | 841 |
| L_0~180(85)av | 427 |
| L_90~270(65)av | 1432 |
| L_90~270(75)av | 833 |
| L_90~270(85)av | 446 |
| L_45(65)av | 1458 |
| L_45(75)av | 854 |
| L_45(85)av | 460 |

Standard: GB/T 29293-2012

C Range: 0 - 360DEG
C Interval: 15.0DEG
Test Speed: HIGH
Temperature:25.3DEG
Operators:Jason
Test Date:2020-08-28

γ Range: 0 - 90DEG
γ Interval: 0.5DEG
Test System:EVERFINE GO-2000B_V1 SYSTEM V2.0.362
Humidity:58%
Test Distance:5.850m [K=1.0000]
Remarks:

Planar Illuminance Curve



C Range: 0 - 360DEG
 C Interval: 15.0DEG
 Test Speed: HIGH
 Temperature: 25.3DEG
 Operators: Jason
 Test Date: 2020-08-28

γ Range: 0 - 90DEG
 γ Interval: 0.5DEG
 Test System: EVERFINE GO-2000B_V1 SYSTEM V2.0.362
 Humidity: 58%
 Test Distance: 5.850m [K=1.0000]
 Remarks:

