

T100-13W-TW-927-50



Light Output Ratio:	100.0%	
Luminaire Power:	12.35 W	
SHR Nominal:	0.75	Calculated using the TM5
SHR Maximum:	0.80	fine grid method.

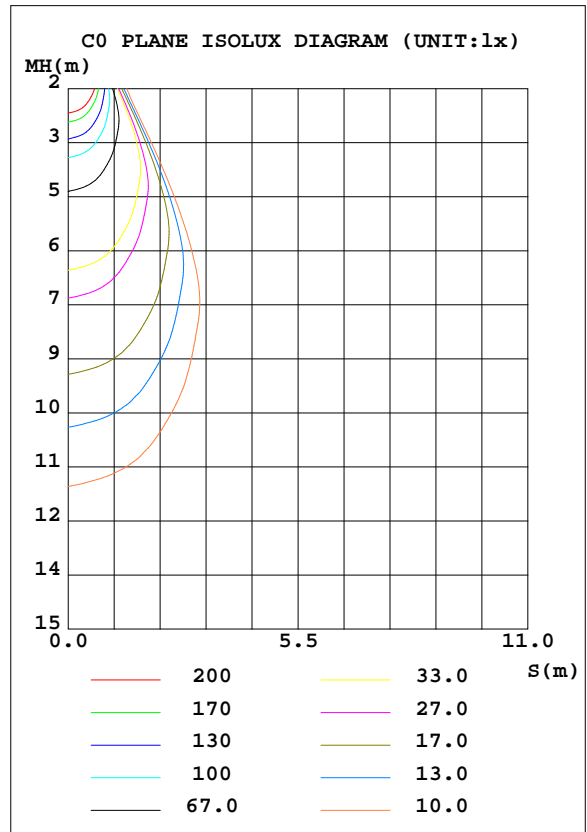
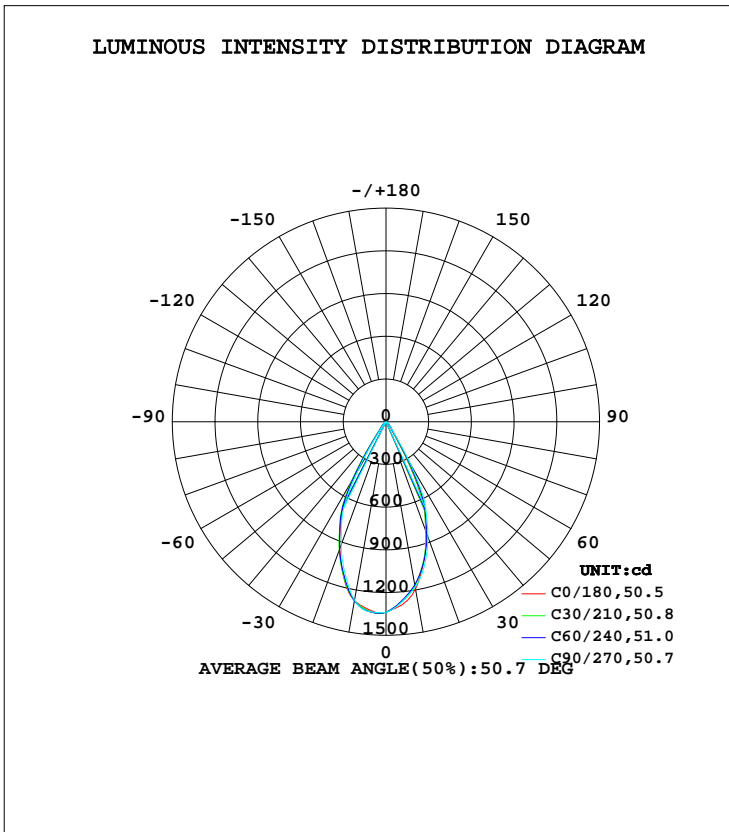
C Range: 0 - 360DEG
C Interval: 15.0DEG
Test Speed: HIGH
Temperature: 25.3DEG
Operators: Jason
Test Date: 2020-08-28

γ Range: 0 - 90DEG
 γ Interval: 0.5DEG
Test System: EVERFINE GO-2000B_V1 SYSTEM V2.0.362
Humidity: 58%
Test Distance: 5.850m [K=1.0000]
Remarks:

LUMINAIRE PHOTOMETRIC TEST REPORT

Test:U:35.30V I:0.3500A P:12.35W PF:1.000 Freq:0Hz Lamp Flux:851.546x1 lm		
NAME: T100-13W-TW-927-50	TYPE:Downlight	SERIAL No.:
SPEC.:2700K	DIM.: φ110mm*H79mm	
MFR.: NEKO LIGHTING AG		

DATA OF LAMP		PHOTOMETRIC DATA Eff: 68.92 lm/W			
MODEL	BRIDGELUX-2700K	I _{max} (cd)	1347	S/MH(C0/180)	0.80
NOMINAL POWER(W)	13	LOR(%)	100.0	S/MH(C90/270)	0.78
RATED VOLTAGE(V)	36	TOTAL FLUX(lm)	851.55	η UP, DN(C0-180)	0.0,48.6
NOMINAL FLUX(lm)	851.546	CIE CLASS	DIRECT	η UP, DN(C180-360)	0.0,51.4
LAMPS INSIDE	1	η up(%)	0.0	CIBSE SHR NOM	0.75
TEST VOLTAGE(V)	35.3	η down(%)	100.0	CIBSE SHR MAX	0.80



C Range: 0 - 360DEG
 C Interval: 15.0DEG
 Test Speed: HIGH
 Temperature:25.3DEG
 Operators:Jason
 Test Date:2020-08-28

γ Range: 0 - 90DEG
 γ Interval: 0.5DEG
 Test System:EVERFINE GO-2000B_V1 SYSTEM V2.0.362
 Humidity:58%
 Test Distance:5.850m [K=1.0000]
 Remarks:

ZONAL FLUX DIAGRAM

ZONAL FLUX DIAGRAM:

γ	C0	C45	C90	C135	C180	C225	C270	C315	γ	Φ zone	Φ total	%lum, lamp
10	1192	1166	1179	1238	1275	1273	1273	1233	0- 10	122.3	122.3	14.4,14.4
20	817.8	829.6	861.6	905.4	949.9	955.9	920.9	853.6	10- 20	298.4	420.7	49.4,49.4
30	237.9	286.1	344.9	423.9	478.7	470.0	394.5	280.2	20- 30	298.3	719.0	84.4,84.4
40	45.81	53.50	57.22	60.55	60.93	56.55	47.72	43.44	30- 40	86.12	805.1	94.5,94.5
50	18.68	23.06	24.35	25.89	26.15	24.75	20.12	17.64	40- 50	27.73	832.8	97.8,97.8
60	6.110	7.471	7.511	7.431	7.853	7.752	6.328	5.609	50- 60	11.86	844.7	99.2,99.2
70	2.445	3.085	3.132	3.171	3.310	3.217	2.607	2.255	60- 70	4.672	849.4	99.7,99.7
80	0.6347	0.8270	0.9118	0.9393	0.9747	0.9190	0.6682	0.5630	70- 80	1.807	851.2	100,100
90	0.0590	0.0590	0.0722	0.0919	0.0830	0.0437	0.0372	0.0372	80- 90	0.3718	851.5	100,100
100									90-100			
110									100-110			
120									110-120			
130									120-130			
140									130-140			
150									140-150			
160									150-160			
170									160-170			
180									170-180			
DEG	LUMINOUS INTENSITY:cd									UNIT:lm		

Conical surface Flux(90deg): 821.23 lm

%lum = 96.4%
 %lamp = 96.4%

Conical surface Flux(120deg): 844.69 lm

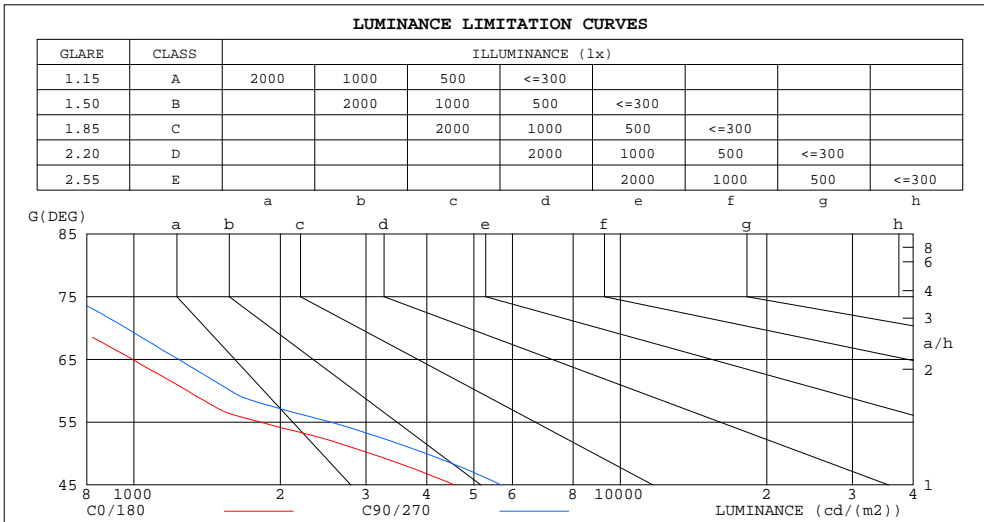
%lum = 99.2%
 %lamp = 99.2%

C Range: 0 - 360DEG
 C Interval: 15.0DEG
 Test Speed: HIGH
 Temperature:25.3DEG
 Operators:Jason
 Test Date:2020-08-28

γ Range: 0 - 90DEG
 γ Interval: 0.5DEG
 Test System:EVERFINE GO-2000B_V1 SYSTEM V2.0.362
 Humidity:58%
 Test Distance:5.850m [K=1.0000]
 Remarks:

LUMINANCE LIMITATION CURVES

Test:U:35.30V I:0.3500A P:12.35W PF:1.000 Freq:0Hz Lamp Flux:851.546x1 lm		
NAME: T100-13W-TW-927-50	TYPE:Downlight	SERIAL No.:
SPEC.:2700K	DIM.: φ110mm*H79mm	
MFR.: NEKO LIGHTING AG		



LUMINANCE cd/(m2)		
G(DEG)	C0/180	C90/270
85	260	440
80	385	552
75	551	738
70	753	963
65	994	1236
60	1288	1580
55	1820	2538
50	3063	3986
45	4554	5688

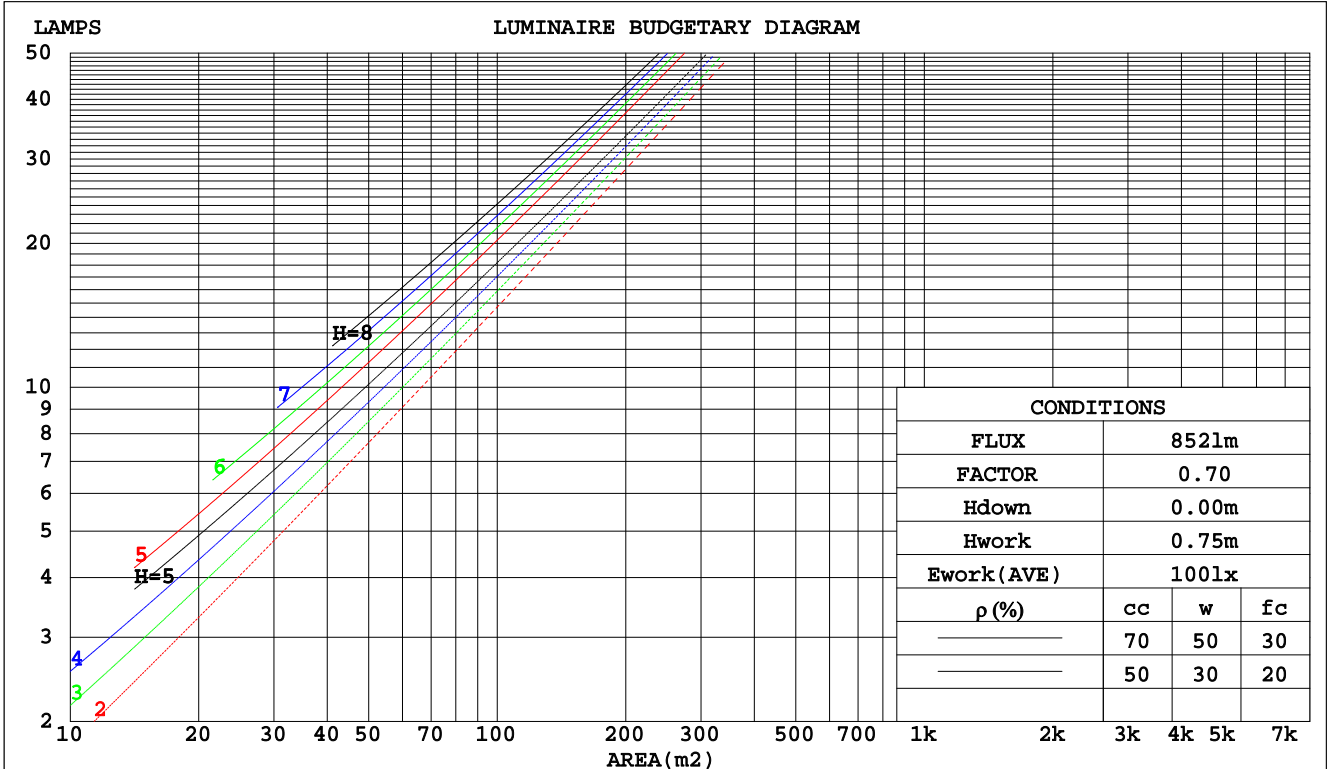
C Range: 0 - 360DEG
 C Interval: 15.0DEG
 Test Speed: HIGH
 Temperature:25.3DEG
 Operators:Jason
 Test Date:2020-08-28

γ Range: 0 - 90DEG
 γ Interval: 0.5DEG
 Test System:EVERFINE GO-2000B_V1 SYSTEM V2.0.362
 Humidity:58%
 Test Distance:5.850m [K=1.0000]
 Remarks:

CU AND LUMINAIRE BUDGETARY ESTIMATE DIAGRAM

Test:U:35.30V I:0.3500A P:12.35W PF:1.000 Freq:0Hz Lamp Flux:851.546x1 lm		
NAME: T100-13W-TW-927-50	TYPE:Downlight	SERIAL No.:
SPEC.:2700K	DIM.: φ110mm*H79mm	
MFR.: NEKO LIGHTING AG		

pcc	80%			70%			50%			30%			10%			0
	50%	30%	10%	50%	30%	10%	50%	30%	10%	50%	30%	10%	50%	30%	10%	0
ρw																0
ρfc	20%			20%			20%			20%			20%			0
RCR	RCR:Room Cavity Ratio															
	Coefficients of Utilization(CU)															
0.0	1.19	1.19	1.19	1.16	1.16	1.16	1.11	1.11	1.11	1.06	1.06	1.06	1.02	1.02	1.02	1.00
1.0	1.11	1.09	1.07	1.09	1.07	1.05	1.05	1.03	1.02	1.01	1.00	.99	.98	.97	.96	.94
2.0	1.04	1.01	.97	1.03	.99	.96	.99	.97	.94	.96	.94	.92	.94	.92	.90	.89
3.0	.98	.93	.90	.97	.92	.89	.94	.91	.88	.92	.89	.86	.89	.87	.85	.84
4.0	.92	.87	.83	.91	.87	.83	.89	.85	.82	.87	.84	.81	.85	.83	.80	.79
5.0	.87	.82	.78	.86	.81	.78	.85	.80	.77	.83	.79	.76	.82	.78	.76	.74
6.0	.83	.77	.73	.82	.77	.73	.80	.76	.73	.79	.75	.72	.78	.74	.72	.70
7.0	.78	.73	.69	.78	.73	.69	.77	.72	.69	.75	.71	.68	.74	.71	.68	.67
8.0	.75	.69	.65	.74	.69	.65	.73	.68	.65	.72	.68	.65	.71	.67	.64	.63
9.0	.71	.66	.62	.71	.65	.62	.70	.65	.62	.69	.65	.62	.68	.64	.61	.60
10.0	.68	.62	.59	.67	.62	.59	.67	.62	.59	.66	.62	.59	.65	.61	.58	.57



C Range: 0 - 360DEG
 C Interval: 15.0DEG
 Test Speed: HIGH
 Temperature: 25.3DEG
 Operators: Jason
 Test Date: 2020-08-28

γ Range: 0 - 90DEG
 γ Interval: 0.5DEG
 Test System: EVERFINE GO-2000B_V1 SYSTEM V2.0.362
 Humidity: 58%
 Test Distance: 5.850m [K=1.0000]
 Remarks:

WEC AND CCEC

Test:U:35.30V I:0.3500A P:12.35W PF:1.000 Freq:0Hz Lamp Flux:851.546x1 lm		
NAME: T100-13W-TW-927-50	TYPE:Downlight	SERIAL No.:
SPEC.:2700K	DIM.: φ110mm*H79mm	
MFR.: NEKO LIGHTING AG		

ρcc	80%			70%			50%			30%			10%			0
ρw	50%	30%	10%	50%	30%	10%	50%	30%	10%	50%	30%	10%	50%	30%	10%	0
ρfc	20%			20%			20%			20%			20%			0
RCR	RCR:Room Cavity Ratio						Wall Exitance Coefficients(WEC)									
0.0																
1.0	.167	.095	.030	.161	.092	.029	.148	.085	.027	.137	.079	.025	.126	.073	.024	
2.0	.159	.087	.027	.153	.084	.026	.143	.079	.025	.133	.075	.023	.124	.070	.022	
3.0	.150	.080	.024	.146	.078	.023	.137	.074	.023	.128	.070	.022	.121	.067	.021	
4.0	.143	.074	.022	.139	.073	.021	.131	.069	.021	.124	.067	.020	.117	.064	.019	
5.0	.136	.069	.020	.132	.068	.020	.126	.065	.019	.119	.063	.019	.114	.061	.018	
6.0	.129	.065	.019	.126	.064	.018	.120	.062	.018	.115	.060	.018	.110	.058	.017	
7.0	.123	.061	.017	.121	.060	.017	.116	.058	.017	.111	.057	.017	.106	.055	.016	
8.0	.118	.058	.016	.116	.057	.016	.111	.056	.016	.107	.054	.016	.103	.053	.015	
9.0	.113	.055	.015	.111	.054	.015	.107	.053	.015	.103	.052	.015	.100	.051	.015	
10.0	.109	.052	.014	.107	.052	.014	.103	.051	.014	.100	.050	.014	.096	.049	.014	

ρcc	80%			70%			50%			30%			10%			0
ρw	50%	30%	10%	50%	30%	10%	50%	30%	10%	50%	30%	10%	50%	30%	10%	0
ρfc	20%			20%			20%			20%			20%			0
RCR	RCR:Room Cavity Ratio						Ceiling Cavity Exitance Coefficients(CCEC)									
0.0	.190	.190	.190	.163	.163	.163	.111	.111	.111	.064	.064	.064	.020	.020	.020	
1.0	.170	.157	.146	.146	.135	.125	.100	.093	.087	.057	.054	.050	.018	.017	.016	
2.0	.154	.133	.114	.132	.114	.099	.091	.079	.069	.052	.046	.040	.017	.015	.013	
3.0	.141	.113	.091	.121	.098	.079	.083	.068	.055	.048	.040	.033	.015	.013	.011	
4.0	.131	.099	.074	.112	.085	.064	.077	.059	.045	.045	.035	.027	.014	.011	.009	
5.0	.121	.087	.061	.104	.075	.053	.072	.052	.038	.042	.031	.022	.013	.010	.007	
6.0	.114	.077	.051	.098	.067	.045	.067	.047	.032	.039	.028	.019	.013	.009	.006	
7.0	.107	.070	.043	.092	.060	.038	.064	.042	.027	.037	.025	.016	.012	.008	.005	
8.0	.101	.063	.037	.087	.055	.033	.060	.039	.023	.035	.023	.014	.011	.007	.005	
9.0	.096	.058	.032	.083	.050	.028	.057	.035	.020	.033	.021	.012	.011	.007	.004	
10.0	.091	.054	.028	.079	.046	.025	.055	.033	.018	.032	.019	.010	.010	.006	.003	

C Range: 0 - 360DEG
 C Interval: 15.0DEG
 Test Speed: HIGH
 Temperature:25.3DEG
 Operators:Jason
 Test Date:2020-08-28

γ Range: 0 - 90DEG
 γ Interval: 0.5DEG
 Test System:EVERFINE GO-2000B_V1 SYSTEM V2.0.362
 Humidity:58%
 Test Distance:5.850m [K=1.0000]
 Remarks:

UGR(Unified Glare Rating) Table

Test:U:35.30V I:0.3500A P:12.35W PF:1.000 Freq:0Hz Lamp Flux:851.546x1 lm		
NAME: T100-13W-TW-927-50	TYPE:Downlight	SERIAL No.:
SPEC.:2700K	DIM.: φ110mm*H79mm	
MFR.: NEKO LIGHTING AG		

ceiling/cavity	0.7	0.7	0.5	0.5	0.3	0.7	0.7	0.5	0.5	0.3
walls	0.5	0.3	0.5	0.3	0.3	0.5	0.3	0.5	0.3	0.3
working plane	0.2	0.2	0.2	0.2	0.2	0.2	0.2	0.2	0.2	0.2
Room dimensions	Viewed crosswise					Viewed endwise				
x = 2H y = 2H	10.6	11.4	10.8	11.6	11.8	12.1	13.0	12.4	13.2	13.3
3H	10.6	11.4	10.8	11.6	11.8	12.1	12.9	12.4	13.1	13.3
4H	10.6	11.3	10.8	11.5	11.7	12.1	12.9	12.4	13.1	13.3
6H	10.5	11.2	10.8	11.4	11.7	12.1	12.8	12.4	13.0	13.3
8H	10.5	11.1	10.8	11.4	11.7	12.0	12.7	12.3	13.0	13.2
12H	10.4	11.1	10.7	11.3	11.6	12.0	12.6	12.3	12.9	13.2
4H 2H	10.5	11.3	10.8	11.5	11.7	12.0	12.8	12.3	13.0	13.2
3H	10.6	11.2	10.9	11.5	11.8	12.1	12.7	12.4	13.0	13.2
4H	10.6	11.2	10.9	11.5	11.8	12.0	12.6	12.4	12.9	13.2
6H	10.5	11.1	10.9	11.4	11.7	12.0	12.5	12.4	12.9	13.2
8H	10.5	11.0	10.9	11.3	11.7	12.0	12.5	12.4	12.8	13.2
12H	10.5	10.9	10.9	11.3	11.7	11.9	12.4	12.3	12.8	13.1
8H 4H	10.5	11.0	10.9	11.3	11.7	11.9	12.4	12.3	12.8	13.1
6H	10.5	10.9	10.9	11.3	11.7	11.9	12.3	12.3	12.7	13.1
8H	10.4	10.8	10.9	11.2	11.6	11.9	12.2	12.3	12.7	13.1
12H	10.4	10.7	10.9	11.1	11.6	11.9	12.2	12.3	12.6	13.1
12H 4H	10.5	10.9	10.9	11.3	11.7	11.9	12.3	12.3	12.7	13.1
6H	10.4	10.8	10.9	11.2	11.6	11.9	12.2	12.3	12.6	13.1
8H	10.4	10.7	10.9	11.1	11.6	11.8	12.1	12.3	12.6	13.1
Variations with the observer position at spacings:										
S = 1.0H	+ 1.8 / - 3.4					+ 1.8 / - 3.0				
1.5H	+ 2.0 / - 2.4					+ 2.5 / - 2.6				
2.0H	+ 3.4 / - 3.1					+ 3.5 / - 3.1				

CIE Pub.117, 851.5 lm Total Lamp Luminous Flux Correct (8log(F/F0) = -0.6)

C Range: 0 - 360DEG
 C Interval: 15.0DEG
 Test Speed: HIGH
 Temperature:25.3DEG
 Operators:Jason
 Test Date:2020-08-28

γ Range: 0 - 90DEG
 γ Interval: 0.5DEG
 Test System:EVERFINE GO-2000B_V1 SYSTEM V2.0.362
 Humidity:58%
 Test Distance:5.850m [K=1.0000]
 Remarks:

UTILIZATION FACTORS TABLE

Test:U:35.30V I:0.3500A P:12.35W PF:1.000 Freq:0Hz Lamp Flux:851.546x1 lm		
NAME: T100-13W-TW-927-50	TYPE:Downlight	SERIAL No.:
SPEC.:2700K	DIM.: φ110mm*H79mm	
MFR.: NEKO LIGHTING AG		

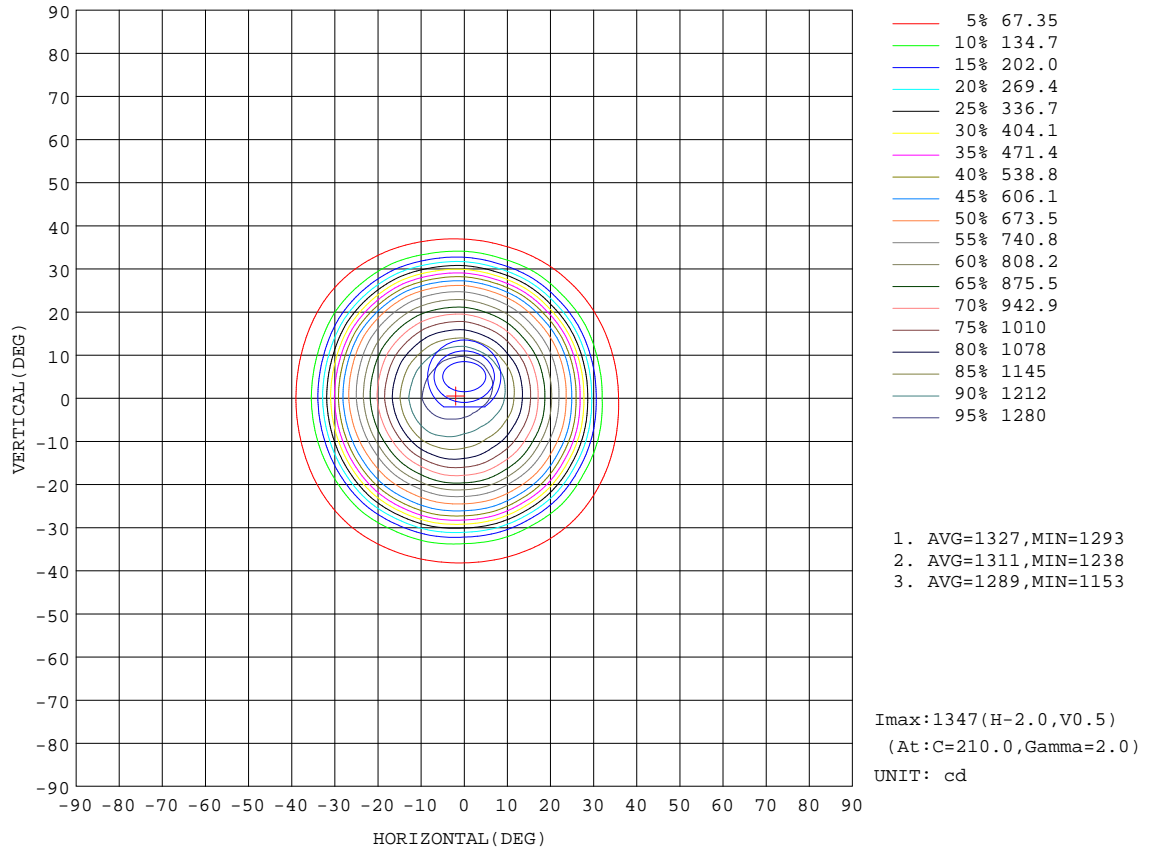
REFLECTANCE										
Ceiling	0.8	0.8	0.8	0.7	0.7	0.7	0.5	0.5	0.5	0
Walls	0.7	0.5	0.3	0.7	0.5	0.3	0.7	0.5	0.3	0
Working plane	0.2	0.2	0.2	0.2	0.2	0.2	0.2	0.2	0.2	0
ROOM INDEX	UTILIZATION FACTORS(PERCENT) $k(RI) \times RCR = 5$									
k = 0.60	88	82	78	88	82	78	87	81	78	74
0.80	95	90	86	95	89	86	94	89	86	82
1.00	100	94	91	99	94	90	97	94	90	86
1.25	104	99	95	103	98	95	101	97	94	90
1.50	106	102	98	105	101	98	103	99	97	92
2.00	109	105	102	107	104	101	105	102	99	94
2.50	110	107	104	109	106	103	106	103	101	95
3.00	112	109	106	110	107	105	107	105	103	96
4.00	114	111	109	112	110	108	108	107	105	98
5.00	115	113	111	113	111	110	109	108	107	99
ROOM INDEX	UF(total)									Direct
According to DIN EN 13032-2 2004			Suspended				SHRNOM = 1.25			

C Range: 0 - 360DEG
 C Interval: 15.0DEG
 Test Speed: HIGH
 Temperature:25.3DEG
 Operators:Jason
 Test Date:2020-08-28

γ Range: 0 - 90DEG
 γ Interval: 0.5DEG
 Test System:EVERFINE GO-2000B_V1 SYSTEM V2.0.362
 Humidity:58%
 Test Distance:5.850m [K=1.0000]
 Remarks:

ISOCANDELA DIAGRAM

Test:U:35.30V I:0.3500A P:12.35W PF:1.000 Freq:0Hz Lamp Flux:851.546x1 lm		
NAME: T100-13W-TW-927-50	TYPE:Downlight	SERIAL No.:
SPEC.:2700K	DIM.: φ110mm*H79mm	
MFR.: NEKO LIGHTING AG		



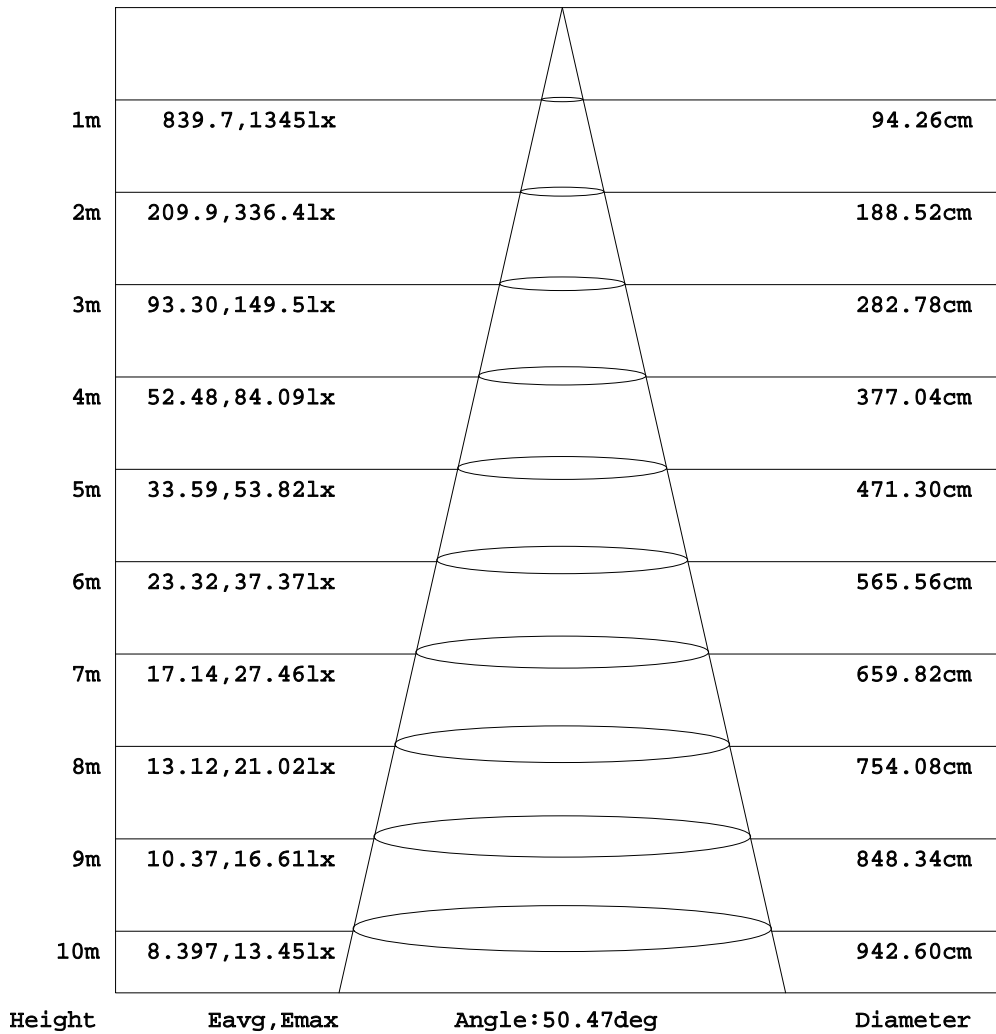
C Range: 0 - 360DEG
C Interval: 15.0DEG
Test Speed: HIGH
Temperature:25.3DEG
Operators:Jason
Test Date:2020-08-28

γ Range: 0 - 90DEG
γ Interval: 0.5DEG
Test System:EVERFINE GO-2000B_V1 SYSTEM V2.0.362
Humidity:58%
Test Distance:5.850m [K=1.0000]
Remarks:

AAI Figure

Test:U:35.30V I:0.3500A P:12.35W PF:1.000 Freq:0Hz Lamp Flux:851.546x1 lm		
NAME: T100-13W-TW-927-50	TYPE:Downlight	SERIAL No.:
SPEC.:2700K	DIM.: φ110mm*H79mm	
MFR.: NEKO LIGHTING AG		

Flux out:600.1 lm



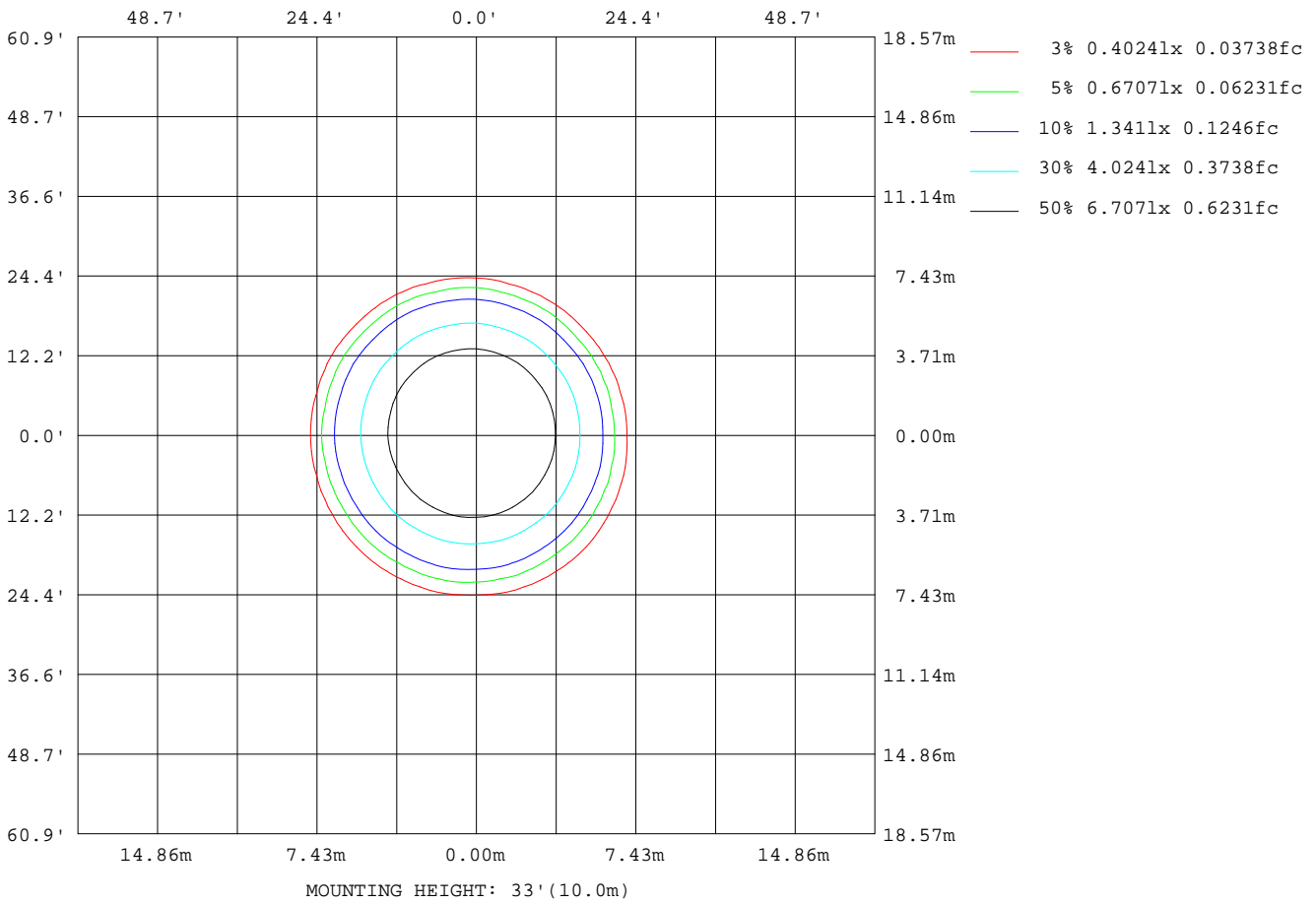
Note:The Curves indicate the illuminated area and the average illumination when the luminaire is at different distance.

C Range: 0 - 360DEG
C Interval: 15.0DEG
Test Speed: HIGH
Temperature:25.3DEG
Operators:Jason
Test Date:2020-08-28

γ Range: 0 - 90DEG
γ Interval: 0.5DEG
Test System:EVERFINE GO-2000B_V1 SYSTEM V2.0.362
Humidity:58%
Test Distance:5.850m [K=1.0000]
Remarks:

ISOLUX DIAGRAM

Test:U:35.30V I:0.3500A P:12.35W PF:1.000 Freq:0Hz Lamp Flux:851.546x1 lm		
NAME: T100-13W-TW-927-50	TYPE:Downlight	SERIAL No.:
SPEC.:2700K	DIM.: ϕ 110mm*H79mm	
MFR.: NEKO LIGHTING AG		



C Range: 0 - 360DEG
 C Interval: 15.0DEG
 Test Speed: HIGH
 Temperature:25.3DEG
 Operators:Jason
 Test Date:2020-08-28

γ Range: 0 - 90DEG
 γ Interval: 0.5DEG
 Test System:EVERFINE GO-2000B_V1 SYSTEM V2.0.362
 Humidity:58%
 Test Distance:5.850m [K=1.0000]
 Remarks:

LED Avg.L Report

Test:U:35.30V I:0.3500A P:12.35W PF:1.000 Freq:0Hz Lamp Flux:851.546x1 lm		
NAME: T100-13W-TW-927-50	TYPE:Downlight	SERIAL No.:
SPEC.:2700K	DIM.: φ110mm*H79mm	
MFR.: NEKO LIGHTING AG		

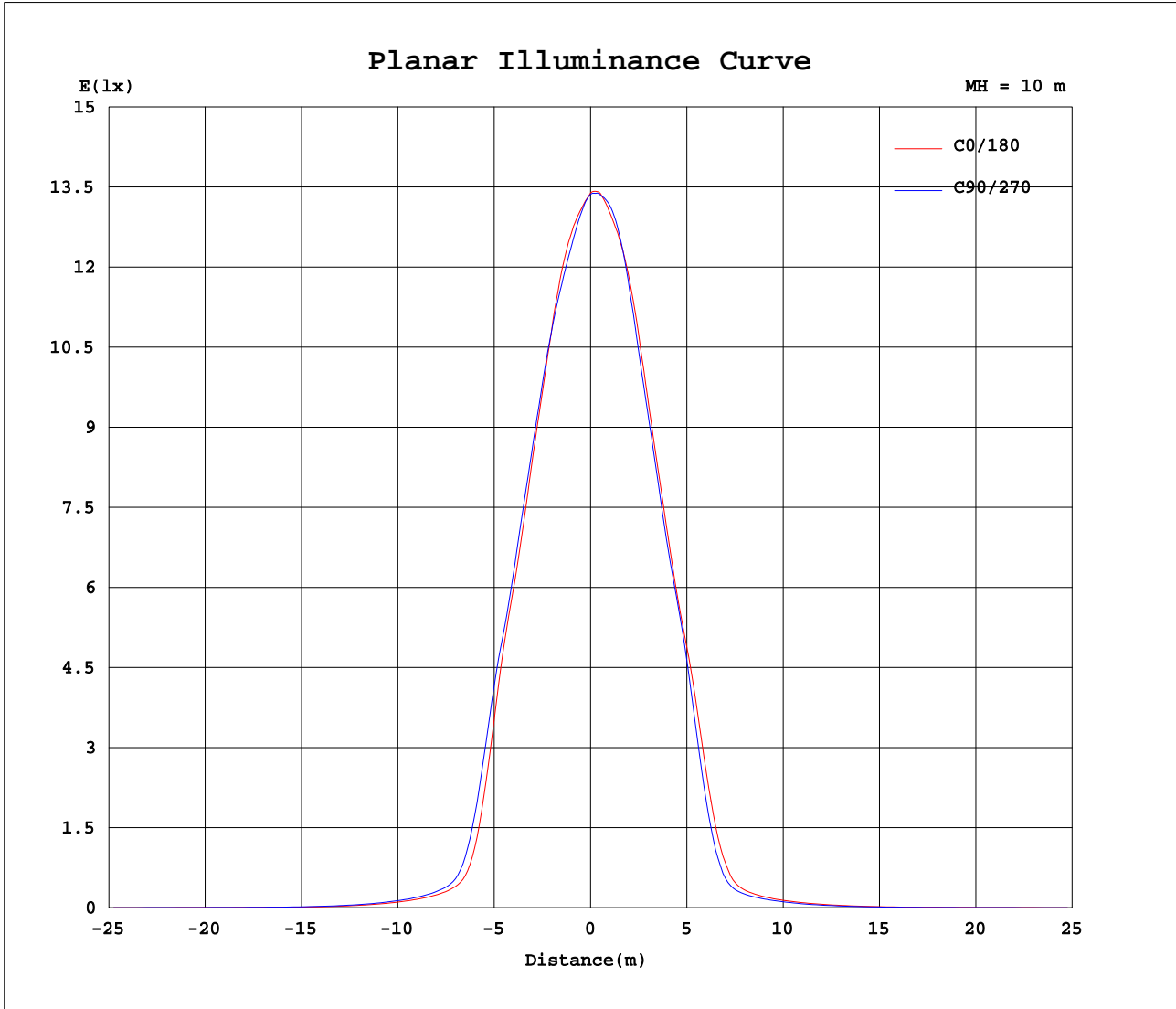
AvgL	cd/m2
L_0~180(65)av	1144
L_0~180(75)av	667
L_0~180(85)av	364
L_90~270(65)av	1142
L_90~270(75)av	661
L_90~270(85)av	353
L_45(65)av	1165
L_45(75)av	678
L_45(85)av	365

Standard: GB/T 29293-2012

C Range: 0 - 360DEG
 C Interval: 15.0DEG
 Test Speed: HIGH
 Temperature:25.3DEG
 Operators:Jason
 Test Date:2020-08-28

γ Range: 0 - 90DEG
 γ Interval: 0.5DEG
 Test System:EVERFINE GO-2000B_V1 SYSTEM V2.0.362
 Humidity:58%
 Test Distance:5.850m [K=1.0000]
 Remarks:

Planar Illuminance Curve



C Range: 0 - 360DEG
 C Interval: 15.0DEG
 Test Speed: HIGH
 Temperature: 25.3DEG
 Operators: Jason
 Test Date: 2020-08-28

γ Range: 0 - 90DEG
 γ Interval: 0.5DEG
 Test System: EVERFINE GO-2000B_V1 SYSTEM V2.0.362
 Humidity: 58%
 Test Distance: 5.850m [K=1.0000]
 Remarks:

LUMINOUS DISTRIBUTION INTENSITY DATA

Test:U:35.30V I:0.3500A P:12.35W PF:1.000 Freq:0Hz Lamp Flux:851.546x1 lm		
NAME: T100-13W-TW-927-50	TYPE:Downlight	SERIAL No.:
SPEC.:2700K	DIM.: ϕ 110mm*H79mm	
MFR.: NEKO LIGHTING AG		

Table--1

UNIT: cd

C(DEC)\ γ (DEC)	0	15	30	45	60	75	90	105	120	135	150	165	180	195	210	225	240	255	270
0	1338	1338	1338	1338	1338	1338	1338	1338	1338	1338	1338	1338	1338	1338	1338	1338	1338	1338	1338
5	1290	1280	1270	1265	1263	1266	1270	1279	1288	1300	1308	1318	1327	1330	1335	1337	1339	1338	1339
10	1192	1182	1170	1166	1164	1170	1179	1197	1215	1238	1252	1266	1275	1272	1274	1273	1278	1273	1273
15	1023	1020	1015	1019	1021	1034	1043	1064	1078	1100	1113	1128	1140	1135	1139	1130	1128	1116	1108
20	818	819	819	830	836	852	862	878	888	905	915	933	950	952	962	956	953	935	921
25	600	607	610	625	634	648	655	668	677	693	704	722	741	748	762	759	758	741	727
30	238	252	258	286	300	330	345	377	393	424	435	457	479	477	489	470	460	421	394
35	73.0	76.7	80.5	86.4	90.0	95.8	99.7	109	115	130	131	143	153	148	155	140	135	112	101
40	45.8	48.3	50.6	53.5	54.8	56.6	57.2	58.5	58.9	60.5	60.5	60.6	60.9	59.8	59.5	56.5	53.6	49.9	47.7
45	30.6	32.5	34.3	36.4	37.1	38.1	38.2	39.0	39.1	40.0	39.9	39.9	40.1	39.5	39.5	37.9	36.2	33.6	32.1
50	18.7	20.1	21.5	23.1	23.6	24.3	24.4	25.0	25.1	25.9	25.8	25.9	26.1	25.8	25.9	24.8	23.4	21.4	20.1
55	9.90	10.9	11.9	13.0	13.4	13.8	13.8	14.2	14.3	14.8	14.8	15.0	15.3	15.1	15.3	14.6	13.6	12.1	11.1
60	6.11	6.58	7.03	7.47	7.60	7.65	7.51	7.47	7.38	7.43	7.43	7.60	7.85	7.91	8.03	7.75	7.37	6.79	6.33
65	3.99	4.33	4.61	4.95	5.02	5.07	4.97	4.96	4.89	4.94	4.92	5.05	5.20	5.24	5.31	5.14	4.90	4.49	4.20
70	2.44	2.67	2.86	3.09	3.13	3.20	3.13	3.16	3.12	3.17	3.15	3.22	3.31	3.30	3.35	3.22	3.07	2.79	2.61
75	1.35	1.48	1.60	1.74	1.78	1.83	1.82	1.84	1.83	1.86	1.86	1.88	1.92	1.91	1.92	1.84	1.72	1.55	1.43
80	0.63	0.69	0.77	0.83	0.88	0.90	0.91	0.92	0.93	0.94	0.95	0.96	0.97	0.98	0.96	0.92	0.84	0.76	0.67
85	0.21	0.22	0.27	0.29	0.33	0.33	0.36	0.36	0.39	0.38	0.40	0.39	0.39	0.40	0.37	0.36	0.31	0.28	0.22
90	0.06	0.06	0.06	0.06	0.06	0.06	0.07	0.07	0.09	0.09	0.10	0.10	0.08	0.08	0.06	0.04	0.04	0.04	0.04

C Range: 0 - 360DEG
 C Interval: 15.0DEG
 Test Speed: HIGH
 Temperature: 25.3DEG
 Operators: Jason
 Test Date: 2020-08-28

γ Range: 0 - 90DEG
 γ Interval: 0.5DEG
 Test System: EVERFINE GO-2000B_V1 SYSTEM V2.0.362
 Humidity: 58%
 Test Distance: 5.850m [K=1.0000]
 Remarks:

LUMINOUS DISTRIBUTION INTENSITY DATA

Test:U:35.30V I:0.3500A P:12.35W PF:1.000 Freq:0Hz Lamp Flux:851.546x1 lm		
NAME: T100-13W-TW-927-50	TYPE:Downlight	SERIAL No.:
SPEC.:2700K	DIM.: φ110mm*H79mm	
MFR.: NEKO LIGHTING AG		

Table--2

UNIT: cd

C(DEG) γ (DEG)	285	300	315	330	345															
0	1338	1338	1338	1338	1338															
5	1335	1331	1322	1313	1302															
10	1258	1250	1233	1223	1207															
15	1087	1075	1054	1046	1033															
20	895	878	854	843	828															
25	698	676	647	632	614															
30	347	320	280	266	247															
35	87.3	80.9	75.0	73.5	72.7															
40	45.4	44.5	43.4	44.1	44.7															
45	30.4	29.8	29.0	29.5	29.8															
50	18.7	18.2	17.6	17.9	18.1															
55	10.1	9.68	9.24	9.42	9.50															
60	5.91	5.73	5.61	5.69	5.84															
65	3.89	3.78	3.68	3.75	3.82															
70	2.41	2.33	2.25	2.30	2.35															
75	1.32	1.27	1.24	1.25	1.30															
80	0.62	0.57	0.56	0.56	0.60															
85	0.21	0.17	0.18	0.16	0.19															
90	0.04	0.04	0.04	0.04	0.04															

C Range: 0 - 360DEG
 C Interval: 15.0DEG
 Test Speed: HIGH
 Temperature:25.3DEG
 Operators:Jason
 Test Date:2020-08-28

γ Range: 0 - 90DEG
 γ Interval: 0.5DEG
 Test System:EVERFINE GO-2000B_V1 SYSTEM V2.0.362
 Humidity:58%
 Test Distance:5.850m [K=1.0000]
 Remarks: