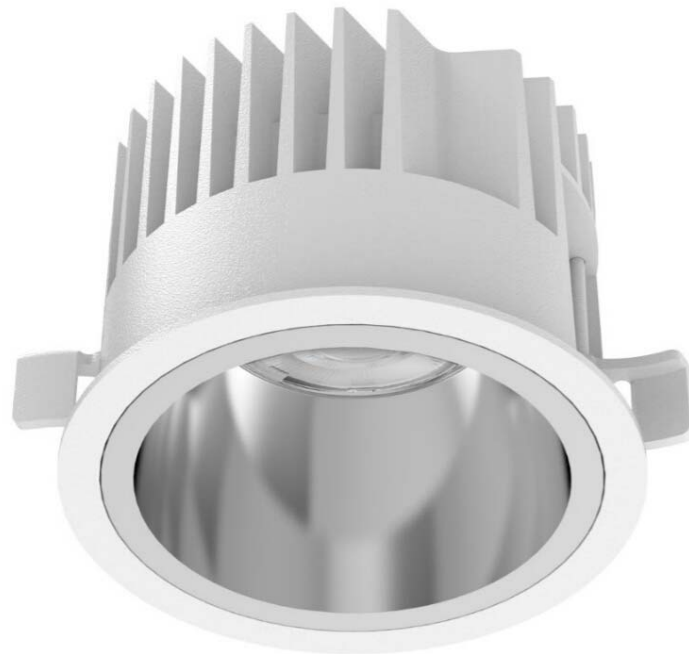


LED Downlight DOME Series T100-9W-940-50



Light Output Ratio:	100.0%	
Luminaire Power:	10.75 W	
SHR Nominal:	0.75	Calculated using the TM5
SHR Maximum:	0.75	fine grid method.

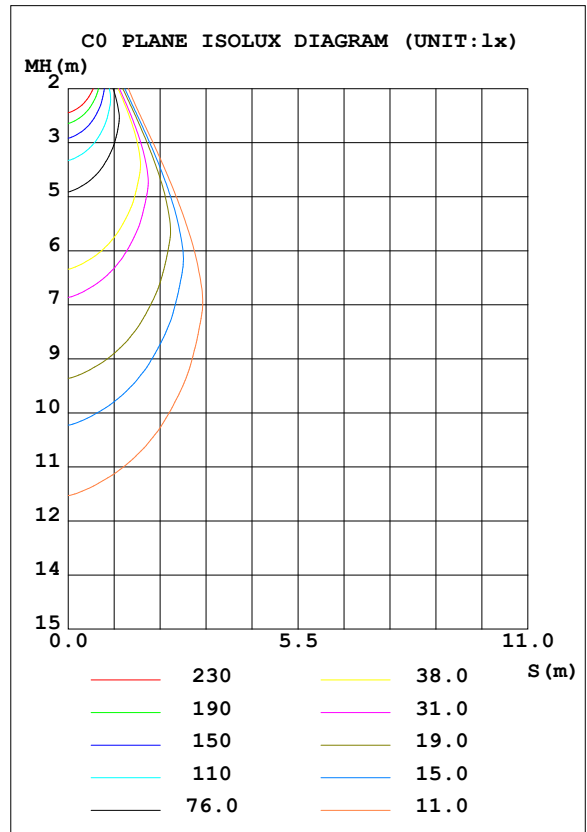
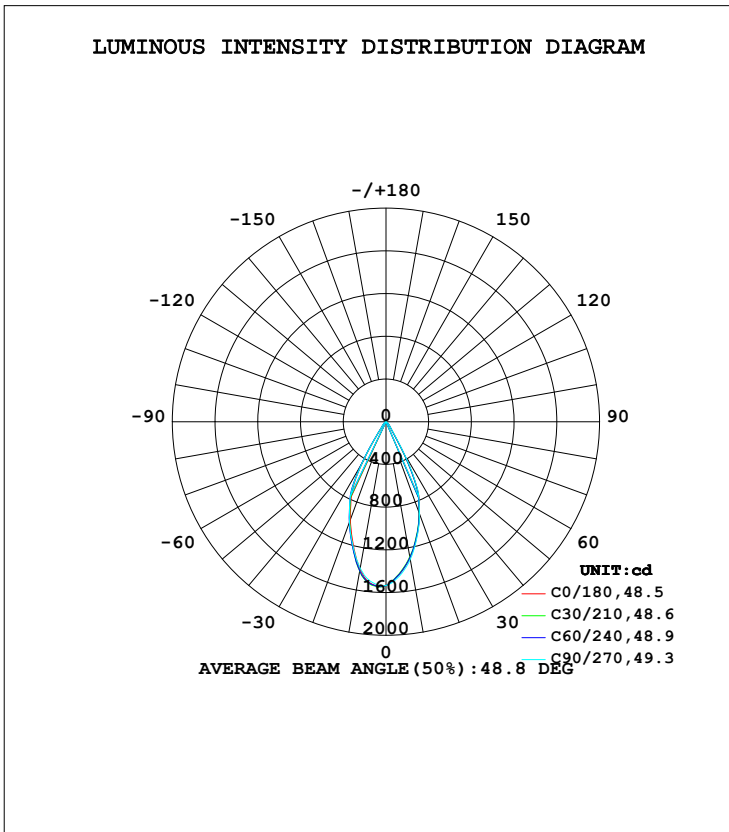
C Range: 0 - 360DEG
 C Interval: 15.0DEG
 Test Speed: HIGH
 Temperature: 25.3DEG
 Operators: Men Yongjian
 Test Date: 2019-07-03

γ Range: 0 - 90DEG
 γ Interval: 1.0DEG
 Test System: EVERFINE GO-2000B_V1 SYSTEM V2.0.288
 Humidity: 56%
 Test Distance: 5.850m [K=1.0000]
 Remarks:

LUMINAIRE PHOTOMETRIC TEST REPORT

Test:U:220.9V I:0.0532A P:10.75W PF:0.9634 Freq:49.90Hz Lamp Flux:922.607x1 lm		
NAME: T100-9W-940-50	TYPE:Downlight	SERIAL No.:
SPEC.:4000K	DIM.: φ110mm*H79mm	
MFR.: NEKO LIGHTING AG		

DATA OF LAMP		PHOTOMETRIC DATA Eff: 85.79 lm/W			
MODEL	CITIZEN-4000K	I _{max} (cd)	1548	S/MH (C0/180)	0.76
NOMINAL POWER (W)	11	LOR (%)	100.0	S/MH (C90/270)	0.77
RATED VOLTAGE (V)	220	TOTAL FLUX (lm)	922.61	η UP, DN (C0-180)	0.0, 47.9
NOMINAL FLUX (lm)	922.607	CIE CLASS	DIRECT	η UP, DN (C180-360)	0.0, 52.1
LAMPS INSIDE	1	η up (%)	0.0	CIBSE SHR NOM	0.75
TEST VOLTAGE (V)	220	η down (%)	100.0	CIBSE SHR MAX	0.75



C Range: 0 - 360DEG
 C Interval: 15.0DEG
 Test Speed: HIGH
 Temperature: 25.3DEG
 Operators: Men Yongjian
 Test Date: 2019-07-03

γ Range: 0 - 90DEG
 γ Interval: 1.0DEG
 Test System: EVERFINE GO-2000B_V1 SYSTEM V2.0.288
 Humidity: 56%
 Test Distance: 5.850m [K=1.0000]
 Remarks:

ZONAL FLUX DIAGRAM

ZONAL FLUX DIAGRAM:

γ	C0	C45	C90	C135	C180	C225	C270	C315	γ	Φ zone	Φ total	%lum,lamp
10	1295	1290	1308	1353	1403	1416	1394	1334	0- 10	137.1	137.1	14.9,14.9
20	915.1	909.7	918.4	948.9	977.0	996.2	1002	958.4	10- 20	321.6	458.7	49.7,49.7
30	300.0	291.7	312.9	372.7	438.6	462.2	458.1	379.9	20- 30	321.1	779.8	84.5,84.5
40	56.51	57.15	58.51	60.90	58.24	57.45	59.07	59.73	30- 40	88.14	868.0	94.1,94.1
50	25.87	25.18	25.90	26.88	25.13	24.77	26.95	28.33	40- 50	31.21	899.2	97.5,97.5
60	9.387	8.638	8.793	9.441	8.501	8.295	9.643	10.75	50- 60	14.35	913.5	99,99
70	4.009	3.650	3.537	3.802	3.498	3.487	4.147	4.676	60- 70	6.171	919.7	99.7,99.7
80	1.195	1.024	0.9397	0.9659	0.9062	0.9747	1.211	1.408	70- 80	2.409	922.1	99.9,99.9
90	0.0504	0.0503	0.0547	0.0524	0.0329	0.0437	0.0415	0.0415	80- 90	0.4942	922.6	100,100
100									90-100			
110									100-110			
120									110-120			
130									120-130			
140									130-140			
150									140-150			
160									150-160			
170									160-170			
180									170-180			
DEG	LUMINOUS INTENSITY:cd									UNIT:lm		

Conical surface Flux(90deg): 885.95 lm

%lum = 96.0%
%lamp = 96.0%

Conical surface Flux(120deg): 913.53 lm

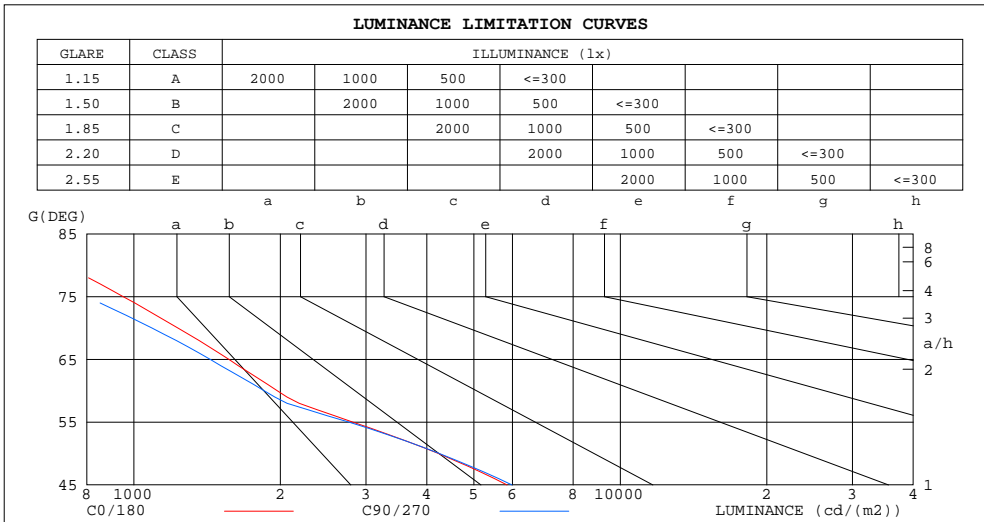
%lum = 99.0%
%lamp = 99.0%

C Range: 0 - 360DEG
C Interval: 15.0DEG
Test Speed: HIGH
Temperature:25.3DEG
Operators:Men Yongjian
Test Date:2019-07-03

γ Range: 0 - 90DEG
 γ Interval: 1.0DEG
Test System:EVERFINE GO-2000B_V1 SYSTEM V2.0.288
Humidity:56%
Test Distance:5.850m [K=1.0000]
Remarks:

LUMINANCE LIMITATION CURVES

Test:U:220.9V I:0.0532A P:10.75W PF:0.9634 Freq:49.90Hz Lamp Flux:922.607x1 lm		
NAME: T100-9W-940-50	TYPE:Downlight	SERIAL No.:
SPEC.:4000K	DIM.: φ110mm*H79mm	
MFR.: NEKO LIGHTING AG		



LUMINANCE cd/(m2)		
G(DEG)	C0/180	C90/270
85	562	421
80	722	570
75	950	799
70	1230	1089
65	1567	1435
60	1971	1852
55	2816	2764
50	4225	4242
45	5849	5986

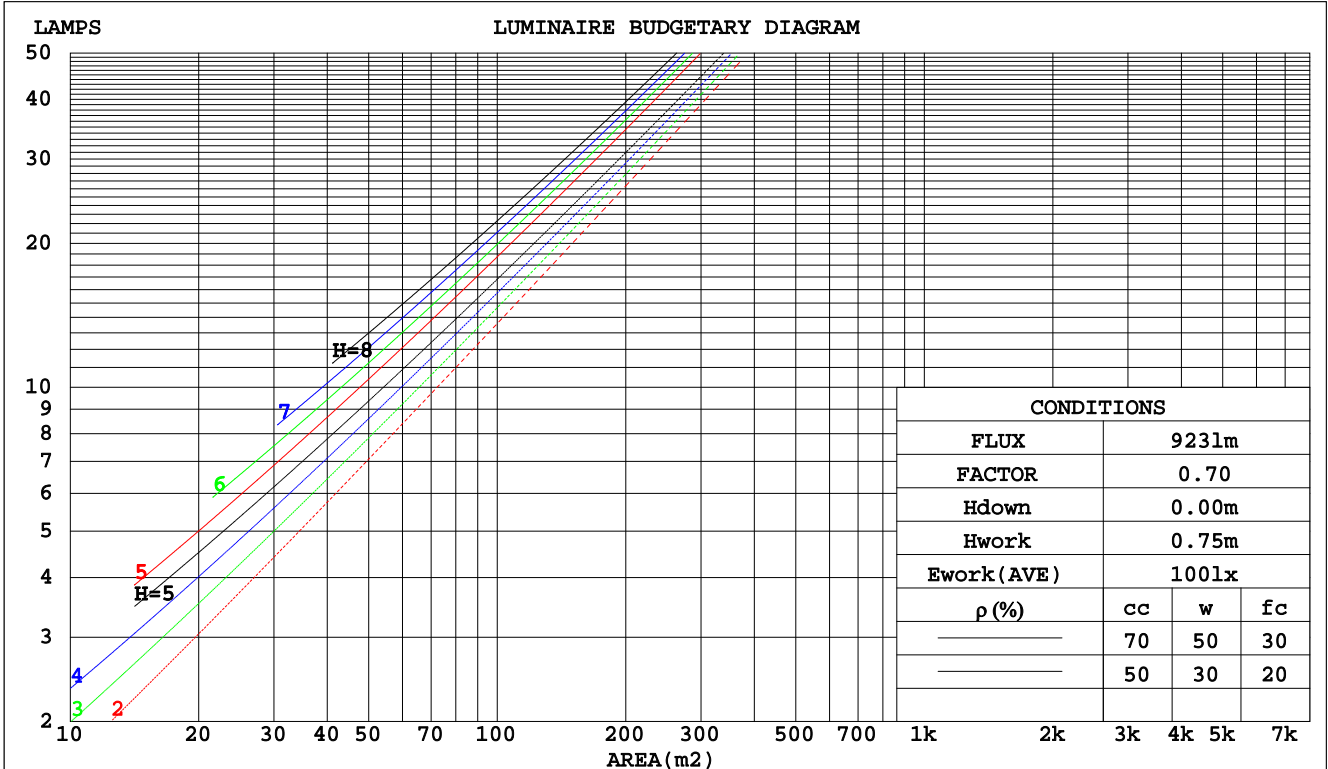
C Range: 0 - 360DEG
 C Interval: 15.0DEG
 Test Speed: HIGH
 Temperature:25.3DEG
 Operators:Men Yongjian
 Test Date:2019-07-03

γ Range: 0 - 90DEG
 γ Interval: 1.0DEG
 Test System:EVERFINE GO-2000B_V1 SYSTEM V2.0.288
 Humidity:56%
 Test Distance:5.850m [K=1.0000]
 Remarks:

CU AND LUMINAIRE BUDGETARY ESTIMATE DIAGRAM

Test:U:220.9V I:0.0532A P:10.75W PF:0.9634 Freq:49.90Hz Lamp Flux:922.607x1 lm		
NAME: T100-9W-940-50	TYPE:Downlight	SERIAL No.:
SPEC.:4000K	DIM.: φ110mm*H79mm	
MFR.: NEKO LIGHTING AG		

ρcc	80%			70%			50%			30%			10%			0
ρw	50%	30%	10%	50%	30%	10%	50%	30%	10%	50%	30%	10%	50%	30%	10%	0
ρfc	20%			20%			20%			20%			20%			0
RCR	RCR:Room Cavity Ratio															
	Coefficients of Utilization(CU)															
0.0	1.19	1.19	1.19	1.16	1.16	1.16	1.11	1.11	1.11	1.06	1.06	1.06	1.02	1.02	1.02	.00
1.0	1.11	1.09	1.07	1.09	1.07	1.05	1.05	1.03	1.02	1.01	1.00	.99	.98	.97	.96	.94
2.0	1.04	1.01	.97	1.03	.99	.96	.99	.97	.94	.96	.94	.92	.94	.92	.90	.89
3.0	.98	.93	.90	.97	.92	.89	.94	.91	.88	.92	.89	.86	.89	.87	.85	.83
4.0	.92	.87	.83	.91	.87	.83	.89	.85	.82	.87	.84	.81	.85	.82	.80	.79
5.0	.87	.82	.78	.86	.81	.78	.85	.80	.77	.83	.79	.76	.82	.78	.76	.74
6.0	.83	.77	.73	.82	.77	.73	.80	.76	.73	.79	.75	.72	.78	.74	.72	.70
7.0	.78	.73	.69	.78	.73	.69	.77	.72	.69	.75	.71	.68	.74	.71	.68	.67
8.0	.75	.69	.65	.74	.69	.65	.73	.68	.65	.72	.68	.65	.71	.67	.65	.63
9.0	.71	.66	.62	.71	.66	.62	.70	.65	.62	.69	.65	.62	.68	.64	.61	.60
10.0	.68	.63	.59	.67	.62	.59	.67	.62	.59	.66	.62	.59	.65	.61	.59	.57



C Range: 0 - 360DEG
 C Interval: 15.0DEG
 Test Speed: HIGH
 Temperature:25.3DEG
 Operators:Men Yongjian
 Test Date:2019-07-03

γ Range: 0 - 90DEG
 γ Interval: 1.0DEG
 Test System:EVERFINE GO-2000B_V1 SYSTEM V2.0.288
 Humidity:56%
 Test Distance:5.850m [K=1.0000]
 Remarks:

WEC AND CCEC

Test:U:220.9V I:0.0532A P:10.75W PF:0.9634 Freq:49.90Hz Lamp Flux:922.607x1 lm		
NAME: T100-9W-940-50	TYPE:Downlight	SERIAL No.:
SPEC.:4000K	DIM.: φ110mm*H79mm	
MFR.: NEKO LIGHTING AG		

ρcc	80%			70%			50%			30%			10%			0
ρw	50%	30%	10%	50%	30%	10%	50%	30%	10%	50%	30%	10%	50%	30%	10%	0
ρfc	20%			20%			20%			20%			20%			0
RCR	RCR:Room Cavity Ratio						Wall Exitance Coefficients(WEC)									
0.0																
1.0	.168	.095	.030	.161	.092	.029	.148	.085	.027	.137	.079	.025	.126	.073	.024	
2.0	.159	.087	.027	.153	.085	.026	.143	.080	.025	.133	.075	.023	.124	.070	.022	
3.0	.151	.080	.024	.146	.078	.024	.137	.074	.023	.129	.071	.022	.121	.067	.021	
4.0	.143	.074	.022	.139	.073	.021	.131	.070	.021	.124	.067	.020	.117	.064	.019	
5.0	.136	.069	.020	.132	.068	.020	.126	.065	.019	.119	.063	.019	.114	.061	.018	
6.0	.129	.065	.019	.126	.064	.018	.120	.062	.018	.115	.060	.018	.110	.058	.017	
7.0	.123	.061	.017	.121	.060	.017	.116	.058	.017	.111	.057	.017	.106	.055	.016	
8.0	.118	.058	.016	.116	.057	.016	.111	.055	.016	.107	.054	.016	.103	.053	.015	
9.0	.113	.055	.015	.111	.054	.015	.107	.053	.015	.103	.052	.015	.099	.051	.015	
10.0	.109	.052	.014	.107	.051	.014	.103	.050	.014	.100	.049	.014	.096	.048	.014	

ρcc	80%			70%			50%			30%			10%			0
ρw	50%	30%	10%	50%	30%	10%	50%	30%	10%	50%	30%	10%	50%	30%	10%	0
ρfc	20%			20%			20%			20%			20%			0
RCR	RCR:Room Cavity Ratio						Ceiling Cavity Exitance Coefficients(CCEC)									
0.0	.190	.190	.190	.163	.163	.163	.111	.111	.111	.064	.064	.064	.020	.020	.020	
1.0	.170	.157	.146	.146	.135	.125	.100	.093	.087	.057	.054	.050	.018	.017	.016	
2.0	.155	.133	.114	.132	.114	.099	.091	.079	.069	.052	.046	.040	.017	.015	.013	
3.0	.141	.113	.091	.121	.098	.079	.083	.068	.055	.048	.040	.033	.015	.013	.011	
4.0	.131	.099	.074	.112	.085	.064	.077	.059	.045	.045	.035	.027	.014	.011	.009	
5.0	.121	.087	.061	.104	.075	.053	.072	.052	.038	.042	.031	.022	.013	.010	.007	
6.0	.114	.077	.051	.098	.067	.045	.067	.047	.032	.039	.028	.019	.013	.009	.006	
7.0	.107	.070	.044	.092	.060	.038	.064	.042	.027	.037	.025	.016	.012	.008	.005	
8.0	.101	.063	.037	.087	.055	.033	.060	.039	.023	.035	.023	.014	.011	.007	.005	
9.0	.096	.058	.032	.083	.050	.028	.057	.035	.020	.033	.021	.012	.011	.007	.004	
10.0	.091	.054	.028	.079	.046	.025	.055	.033	.018	.032	.019	.011	.010	.006	.003	

C Range: 0 - 360DEG
 C Interval: 15.0DEG
 Test Speed: HIGH
 Temperature:25.3DEG
 Operators:Men Yongjian
 Test Date:2019-07-03

γ Range: 0 - 90DEG
 γ Interval: 1.0DEG
 Test System:EVERFINE GO-2000B_V1 SYSTEM V2.0.288
 Humidity:56%
 Test Distance:5.850m [K=1.0000]
 Remarks:

UGR(Unified Glare Rating) Table

Test:U:220.9V I:0.0532A P:10.75W PF:0.9634 Freq:49.90Hz Lamp Flux:922.607x1 lm		
NAME: T100-9W-940-50	TYPE:Downlight	SERIAL No.:
SPEC.:4000K	DIM.: φ110mm*H79mm	
MFR.: NEKO LIGHTING AG		

ceiling/cavity	0.7	0.7	0.5	0.5	0.3	0.7	0.7	0.5	0.5	0.3
walls	0.5	0.3	0.5	0.3	0.3	0.5	0.3	0.5	0.3	0.3
working plane	0.2	0.2	0.2	0.2	0.2	0.2	0.2	0.2	0.2	0.2
Room dimensions	Viewed crosswise					Viewed endwise				
x = 2H y = 2H	11.4	12.3	11.6	12.4	12.6	11.6	12.4	11.8	12.6	12.8
3H	11.5	12.3	11.8	12.5	12.7	11.6	12.4	11.9	12.6	12.8
4H	11.5	12.3	11.8	12.5	12.7	11.6	12.3	11.9	12.6	12.8
6H	11.5	12.2	11.8	12.4	12.7	11.5	12.3	11.8	12.5	12.7
8H	11.5	12.1	11.8	12.4	12.7	11.5	12.2	11.8	12.4	12.7
12H	11.4	12.1	11.7	12.4	12.6	11.5	12.1	11.8	12.4	12.7
4H 2H	11.3	12.1	11.6	12.3	12.5	11.5	12.2	11.8	12.5	12.7
3H	11.5	12.2	11.8	12.4	12.7	11.6	12.2	11.9	12.5	12.8
4H	11.5	12.1	11.9	12.4	12.7	11.6	12.2	11.9	12.5	12.8
6H	11.5	12.1	11.9	12.4	12.7	11.6	12.1	11.9	12.4	12.8
8H	11.5	12.0	11.9	12.3	12.7	11.5	12.0	11.9	12.4	12.7
12H	11.5	11.9	11.9	12.3	12.7	11.5	11.9	11.9	12.3	12.7
8H 4H	11.4	11.9	11.8	12.3	12.7	11.5	12.0	11.9	12.3	12.7
6H	11.5	11.9	11.9	12.3	12.7	11.5	11.9	11.9	12.3	12.7
8H	11.5	11.8	11.9	12.2	12.7	11.5	11.8	11.9	12.2	12.7
12H	11.4	11.7	11.9	12.2	12.6	11.4	11.7	11.9	12.2	12.6
12H 4H	11.4	11.8	11.8	12.2	12.6	11.5	11.9	11.9	12.3	12.7
6H	11.4	11.8	11.9	12.2	12.6	11.4	11.8	11.9	12.2	12.6
8H	11.4	11.7	11.9	12.2	12.6	11.4	11.7	11.9	12.2	12.6
Variations with the observer position at spacings:										
S = 1.0H	+ 1.4 / - 2.4					+ 1.6 / - 2.7				
1.5H	+ 2.0 / - 2.2					+ 2.2 / - 2.3				
2.0H	+ 3.1 / - 2.7					+ 3.3 / - 2.9				

CIE Pub.117, 922.6 lm Total Lamp Luminous Flux Correct (8log(F/F0) = -0.3)

C Range: 0 - 360DEG
 C Interval: 15.0DEG
 Test Speed: HIGH
 Temperature:25.3DEG
 Operators:Men Yongjian
 Test Date:2019-07-03

γ Range: 0 - 90DEG
 γ Interval: 1.0DEG
 Test System:EVERFINE GO-2000B_V1 SYSTEM V2.0.288
 Humidity:56%
 Test Distance:5.850m [K=1.0000]
 Remarks:

UTILIZATION FACTORS TABLE

Test:U:220.9V I:0.0532A P:10.75W PF:0.9634 Freq:49.90Hz Lamp Flux:922.607x1 lm		
NAME: T100-9W-940-50	TYPE:Downlight	SERIAL No.:
SPEC.:4000K	DIM.: φ110mm*H79mm	
MFR.: NEKO LIGHTING AG		

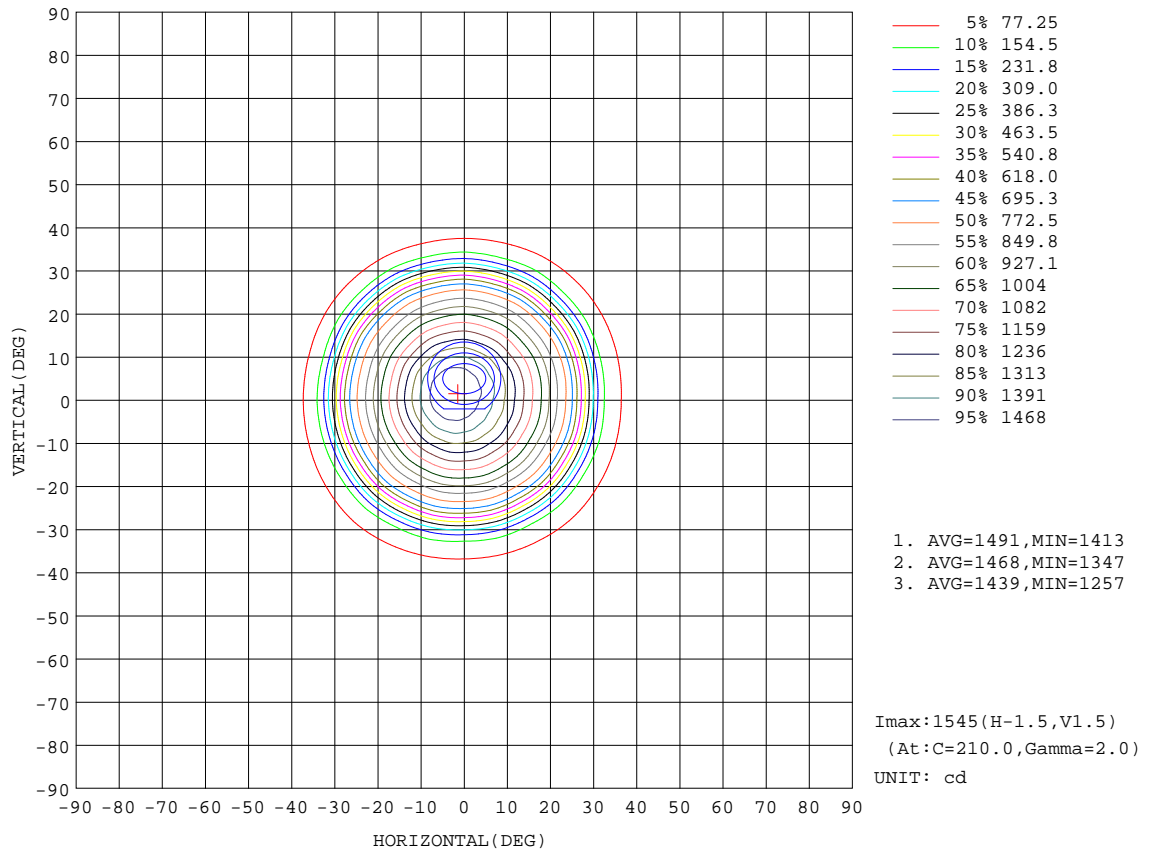
REFLECTANCE										
Ceiling	0.8	0.8	0.8	0.7	0.7	0.7	0.5	0.5	0.5	0
Walls	0.7	0.5	0.3	0.7	0.5	0.3	0.7	0.5	0.3	0
Working plane	0.2	0.2	0.2	0.2	0.2	0.2	0.2	0.2	0.2	0
ROOM INDEX	UTILIZATION FACTORS(PERCENT) $k(RI) \times RCR = 5$									
k = 0.60	88	82	78	87	81	78	87	81	78	74
0.80	95	89	86	95	89	86	93	88	85	82
1.00	100	94	90	99	94	90	97	93	90	86
1.25	103	98	95	102	98	95	100	97	94	90
1.50	106	101	98	105	101	98	103	99	97	92
2.00	109	105	101	107	104	101	105	102	99	94
2.50	110	107	104	109	105	103	106	103	101	95
3.00	112	109	106	110	107	105	107	104	103	96
4.00	114	111	109	112	110	108	108	106	105	98
5.00	115	113	111	113	111	110	109	108	106	99
ROOM INDEX	UF(total)									Direct
According to DIN EN 13032-2 2004			Suspended				SHRNOM = 1.25			

C Range: 0 - 360DEG
 C Interval: 15.0DEG
 Test Speed: HIGH
 Temperature:25.3DEG
 Operators:Men Yongjian
 Test Date:2019-07-03

γ Range: 0 - 90DEG
 γ Interval: 1.0DEG
 Test System:EVERFINE GO-2000B_V1 SYSTEM V2.0.288
 Humidity:56%
 Test Distance:5.850m [K=1.0000]
 Remarks:

ISOCANDELA DIAGRAM

Test:U:220.9V I:0.0532A P:10.75W PF:0.9634 Freq:49.90Hz Lamp Flux:922.607x1 lm		
NAME: T100-9W-940-50	TYPE:Downlight	SERIAL No.:
SPEC.:4000K	DIM.: φ110mm*H79mm	
MFR.: NEKO LIGHTING AG		



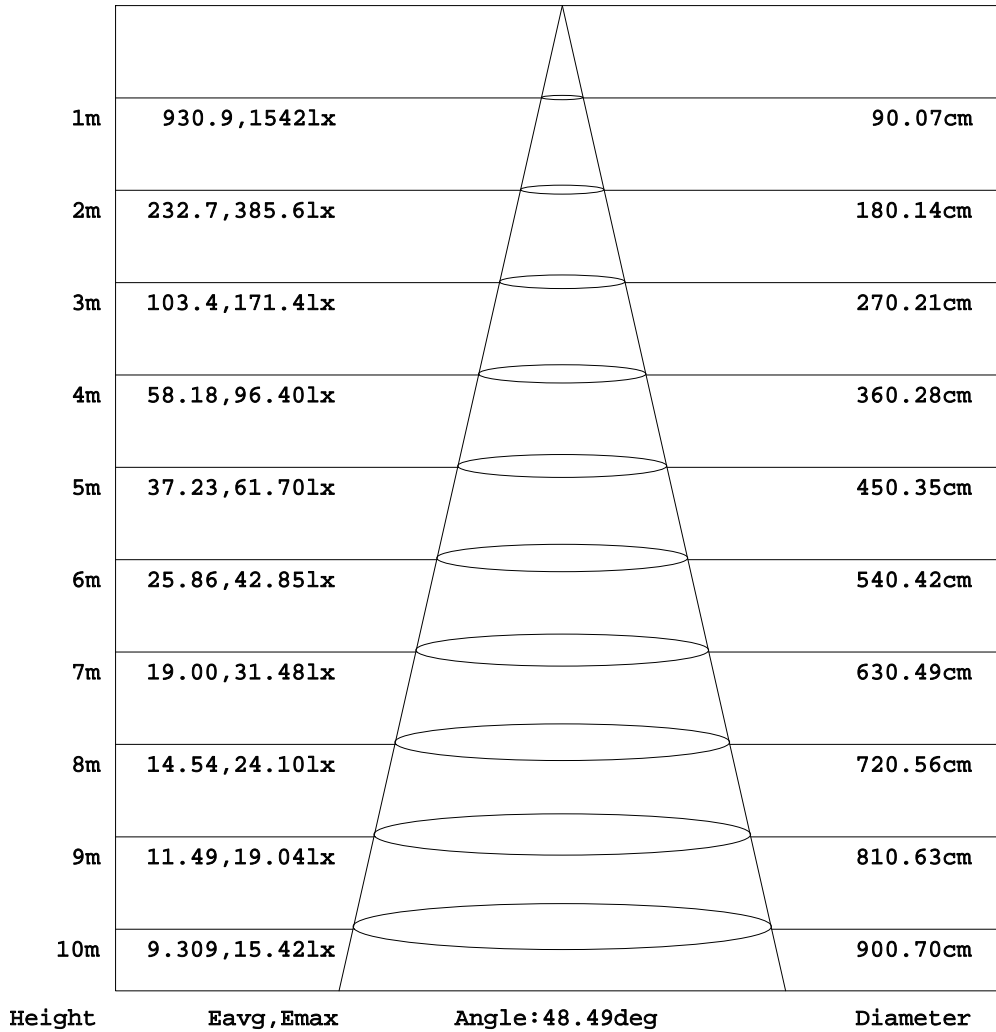
C Range: 0 - 360DEG
 C Interval: 15.0DEG
 Test Speed: HIGH
 Temperature:25.3DEG
 Operators:Men Yongjian
 Test Date:2019-07-03

γ Range: 0 - 90DEG
 γ Interval: 1.0DEG
 Test System:EVERFINE GO-2000B_V1 SYSTEM V2.0.288
 Humidity:56%
 Test Distance:5.850m [K=1.0000]
 Remarks:

AAI Figure

Test:U:220.9V I:0.0532A P:10.75W PF:0.9634 Freq:49.90Hz Lamp Flux:922.607x1 lm		
NAME: T100-9W-940-50	TYPE:Downlight	SERIAL No.:
SPEC.:4000K	DIM.: φ110mm*H79mm	
MFR.: NEKO LIGHTING AG		

Flux out:635.9 lm



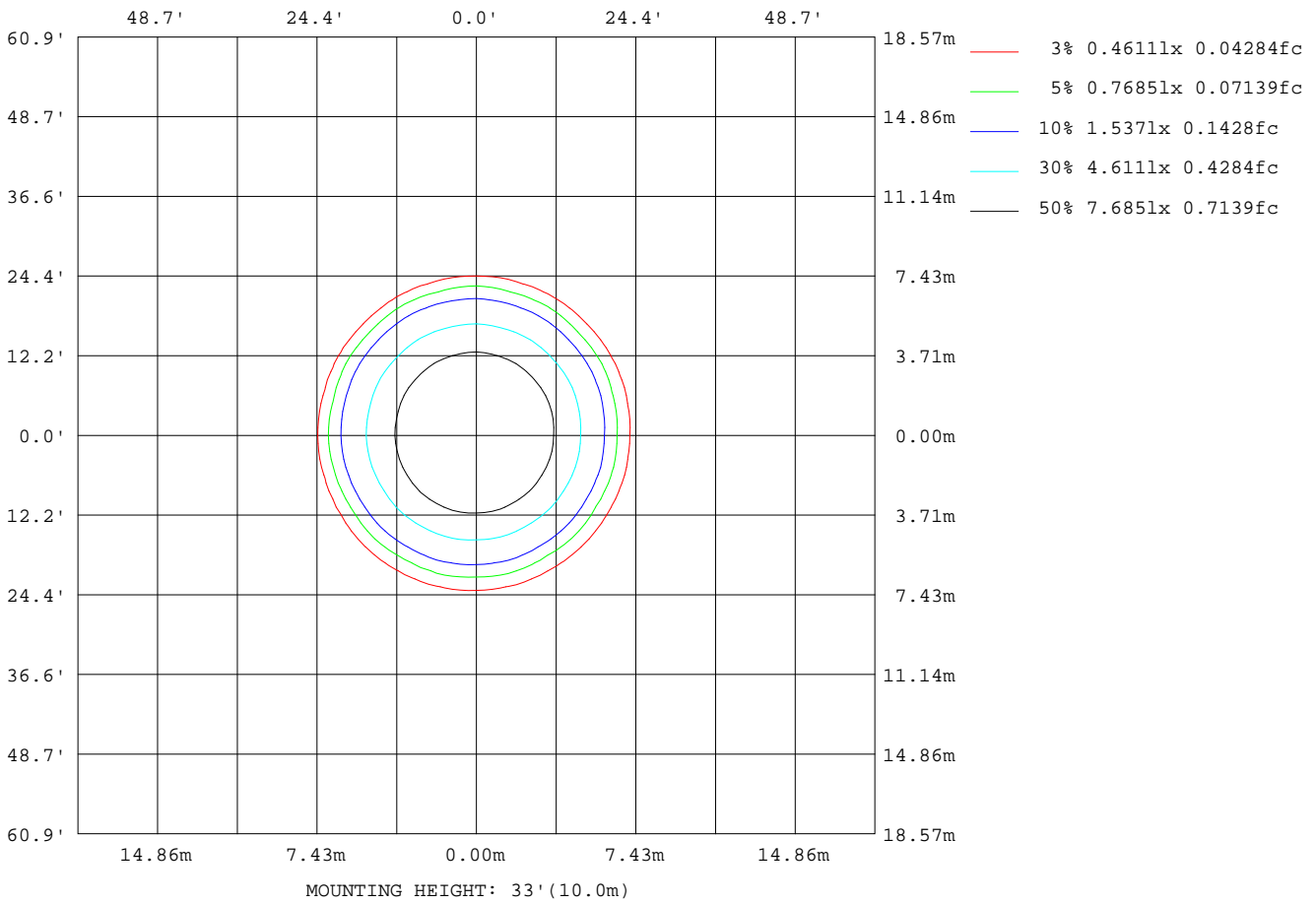
Note:The Curves indicate the illuminated area and the average illumination when the luminaire is at different distance.

C Range: 0 - 360DEG
C Interval: 15.0DEG
Test Speed: HIGH
Temperature:25.3DEG
Operators:Men Yongjian
Test Date:2019-07-03

γ Range: 0 - 90DEG
γ Interval: 1.0DEG
Test System:EVERFINE GO-2000B_V1 SYSTEM V2.0.288
Humidity:56%
Test Distance:5.850m [K=1.0000]
Remarks:

ISOLUX DIAGRAM

Test:U:220.9V I:0.0532A P:10.75W PF:0.9634 Freq:49.90Hz Lamp Flux:922.607x1 lm		
NAME: T100-9W-940-50	TYPE:Downlight	SERIAL No.:
SPEC.:4000K	DIM.: φ110mm*H79mm	
MFR.: NEKO LIGHTING AG		



C Range: 0 - 360DEG
 C Interval: 15.0DEG
 Test Speed: HIGH
 Temperature:25.3DEG
 Operators:Men Yongjian
 Test Date:2019-07-03

γ Range: 0 - 90DEG
 γ Interval: 1.0DEG
 Test System:EVERFINE GO-2000B_V1 SYSTEM V2.0.288
 Humidity:56%
 Test Distance:5.850m [K=1.0000]
 Remarks:

LED Avg.L Report

Test:U:220.9V I:0.0532A P:10.75W PF:0.9634 Freq:49.90Hz Lamp Flux:922.607x1 lm		
NAME: T100-9W-940-50	TYPE:Downlight	SERIAL No.:
SPEC.:4000K	DIM.: φ110mm*H79mm	
MFR.: NEKO LIGHTING AG		

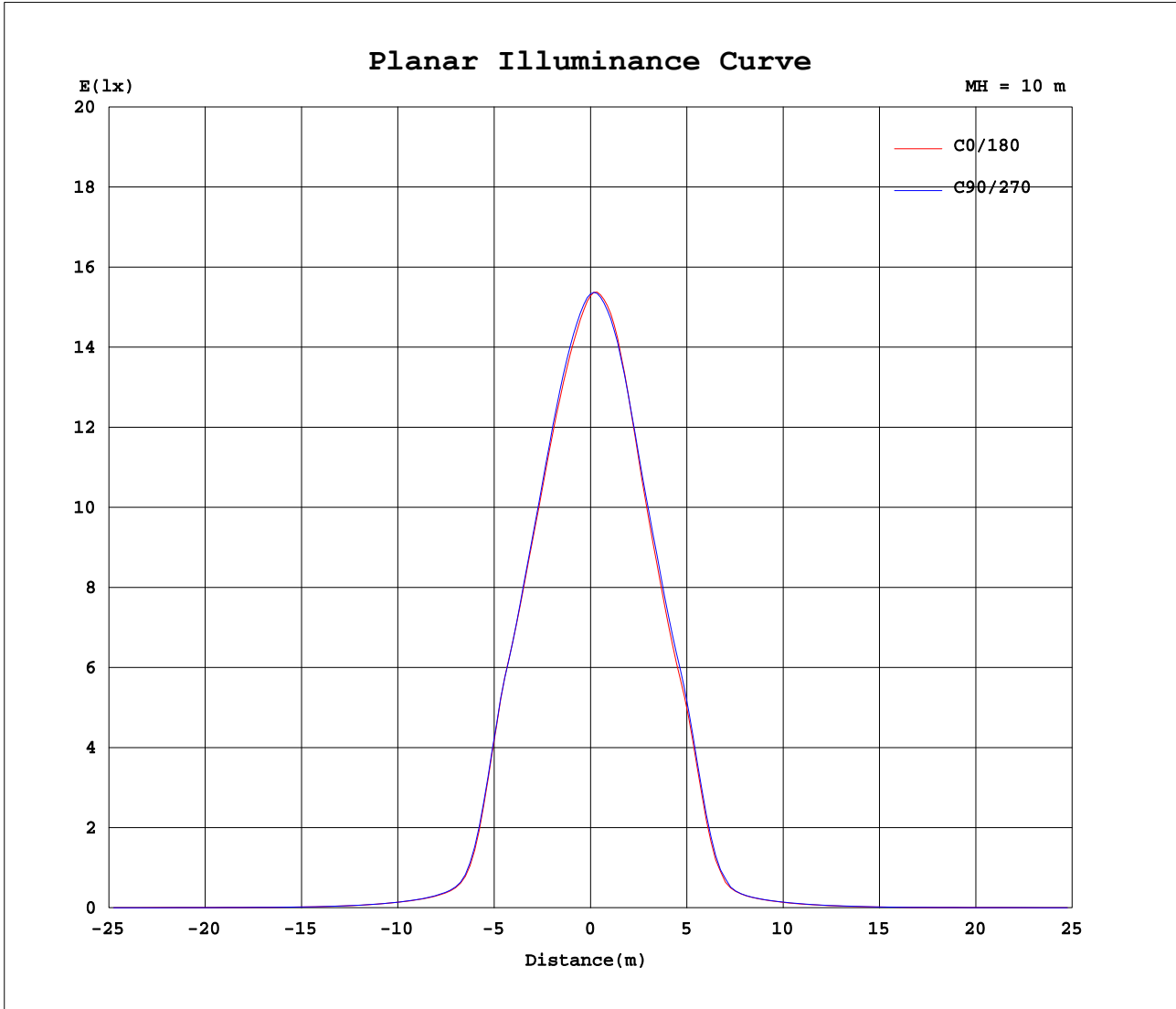
AvgL	cd/m2
L_0~180 (65) av	1484
L_0~180 (75) av	868
L_0~180 (85) av	473
L_90~270 (65) av	1524
L_90~270 (75) av	889
L_90~270 (85) av	486
L_45 (65) av	1540
L_45 (75) av	905
L_45 (85) av	492

Standard: GB/T 29293-2012

C Range: 0 - 360DEG
C Interval: 15.0DEG
Test Speed: HIGH
Temperature:25.3DEG
Operators:Men Yongjian
Test Date:2019-07-03

γ Range: 0 - 90DEG
γ Interval: 1.0DEG
Test System:EVERFINE GO-2000B_V1 SYSTEM V2.0.288
Humidity:56%
Test Distance:5.850m [K=1.0000]
Remarks:

Planar Illuminance Curve



C Range: 0 - 360DEG
 C Interval: 15.0DEG
 Test Speed: HIGH
 Temperature: 25.3DEG
 Operators: Men Yongjian
 Test Date: 2019-07-03

γ Range: 0 - 90DEG
 γ Interval: 1.0DEG
 Test System: EVERFINE GO-2000B_V1 SYSTEM V2.0.288
 Humidity: 56%
 Test Distance: 5.850m [K=1.0000]
 Remarks:

LUMINOUS DISTRIBUTION INTENSITY DATA

Test:U:220.9V I:0.0532A P:10.75W PF:0.9634 Freq:49.90Hz Lamp Flux:922.607x1 lm		
NAME: T100-9W-940-50	TYPE:Downlight	SERIAL No.:
SPEC.:4000K	DIM.: ϕ 110mm*H79mm	
MFR.: NEKO LIGHTING AG		

Table--1

UNIT: cd

C (DEG) \ \gamma (DEG)	0	15	30	45	60	75	90	105	120	135	150	165	180	195	210	225	240	255	270
0	1533	1533	1533	1533	1533	1533	1533	1533	1533	1533	1533	1533	1533	1533	1533	1533	1533	1533	1533
5	1434	1431	1428	1430	1433	1444	1450	1463	1473	1489	1498	1513	1525	1530	1536	1532	1530	1518	1509
10	1295	1292	1285	1290	1292	1303	1308	1325	1333	1353	1360	1381	1403	1407	1421	1416	1416	1402	1394
15	1114	1111	1104	1110	1110	1121	1123	1137	1140	1154	1156	1170	1188	1190	1207	1204	1211	1200	1200
20	915	913	906	910	907	917	918	931	936	949	950	961	977	980	997	996	1007	999	1002
25	701	697	685	690	685	699	703	719	725	742	743	755	768	772	786	787	800	795	799
30	300	297	284	292	289	308	313	336	345	373	379	406	439	441	467	462	475	458	458
35	91.5	90.9	89.0	90.3	90.3	93.6	95.1	99.0	101	105	105	109	117	117	131	123	136	124	133
40	56.5	56.6	56.3	57.2	57.0	58.1	58.5	59.9	60.4	60.9	59.1	58.2	58.2	57.2	57.9	57.5	58.3	57.9	59.1
45	39.4	39.2	38.7	39.2	39.1	39.9	40.2	41.1	41.3	41.5	40.1	39.4	39.2	38.3	38.6	38.5	39.3	39.4	40.8
50	25.9	25.5	25.0	25.2	25.1	25.7	25.9	26.6	26.7	26.9	25.8	25.3	25.1	24.5	24.8	24.8	25.5	25.8	26.9
55	15.4	15.0	14.4	14.5	14.5	15.0	15.1	15.6	15.7	15.8	15.2	14.8	14.7	14.2	14.5	14.4	15.1	15.3	16.3
60	9.39	9.07	8.71	8.64	8.55	8.69	8.79	9.20	9.38	9.44	9.02	8.69	8.50	8.25	8.28	8.29	8.65	8.96	9.64
65	6.31	6.05	5.82	5.73	5.66	5.69	5.76	6.00	6.13	6.18	5.93	5.72	5.60	5.47	5.49	5.53	5.78	6.02	6.47
70	4.01	3.88	3.69	3.65	3.53	3.55	3.54	3.70	3.74	3.80	3.63	3.55	3.50	3.39	3.45	3.49	3.69	3.84	4.15
75	2.34	2.26	2.14	2.09	2.00	1.99	1.96	2.03	2.04	2.08	1.99	1.94	1.93	1.89	1.94	1.99	2.12	2.22	2.41
80	1.20	1.13	1.07	1.02	0.98	0.95	0.94	0.95	0.96	0.97	0.94	0.91	0.91	0.90	0.93	0.97	1.04	1.12	1.21
85	0.47	0.42	0.41	0.38	0.37	0.34	0.35	0.34	0.35	0.34	0.35	0.32	0.32	0.33	0.33	0.37	0.39	0.43	0.46
90	0.05	0.05	0.05	0.05	0.05	0.05	0.05	0.05	0.05	0.05	0.05	0.05	0.03	0.04	0.03	0.04	0.04	0.04	0.04

C Range: 0 - 360DEG	γ Range: 0 - 90DEG
C Interval: 15.0DEG	γ Interval: 1.0DEG
Test Speed: HIGH	Test System:EVERFINE GO-2000B_V1 SYSTEM V2.0.288
Temperature:25.3DEG	Humidity:56%
Operators:Men Yongjian	Test Distance:5.850m [K=1.0000]
Test Date:2019-07-03	Remarks:

LUMINOUS DISTRIBUTION INTENSITY DATA

Test:U:220.9V I:0.0532A P:10.75W PF:0.9634 Freq:49.90Hz Lamp Flux:922.607x1 lm		
NAME: T100-9W-940-50	TYPE:Downlight	SERIAL No.:
SPEC.:4000K	DIM.: φ110mm*H79mm	
MFR.: NEKO LIGHTING AG		

Table--2

UNIT: cd

C (DEG) \ γ (DEG)	285	300	315	330	345											
0	1533	1533	1533	1533	1533											
5	1493	1481	1465	1456	1444											
10	1370	1357	1334	1324	1307											
15	1184	1177	1154	1144	1127											
20	986	980	958	949	931											
25	786	781	759	748	724											
30	429	417	380	365	331											
35	117	114	105	102	96.7											
40	59.4	60.5	59.7	59.3	57.9											
45	41.5	42.5	42.1	41.9	40.7											
50	27.7	28.6	28.3	28.0	27.0											
55	16.9	17.7	17.4	17.2	16.3											
60	10.2	10.8	10.8	10.5	9.95											
65	6.88	7.31	7.29	7.12	6.73											
70	4.41	4.71	4.68	4.58	4.31											
75	2.57	2.76	2.74	2.68	2.52											
80	1.30	1.40	1.41	1.37	1.30											
85	0.51	0.53	0.55	0.53	0.51											
90	0.04	0.04	0.04	0.03	0.03											

C Range: 0 - 360DEG
 C Interval: 15.0DEG
 Test Speed: HIGH
 Temperature:25.3DEG
 Operators:Men Yongjian
 Test Date:2019-07-03

γ Range: 0 - 90DEG
 γ Interval: 1.0DEG
 Test System:EVERFINE GO-2000B_V1 SYSTEM V2.0.288
 Humidity:56%
 Test Distance:5.850m [K=1.0000]
 Remarks: