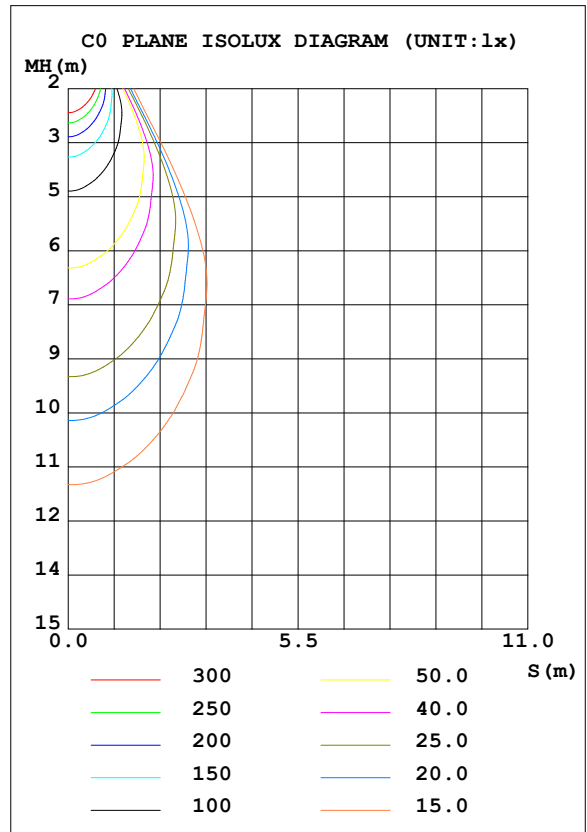
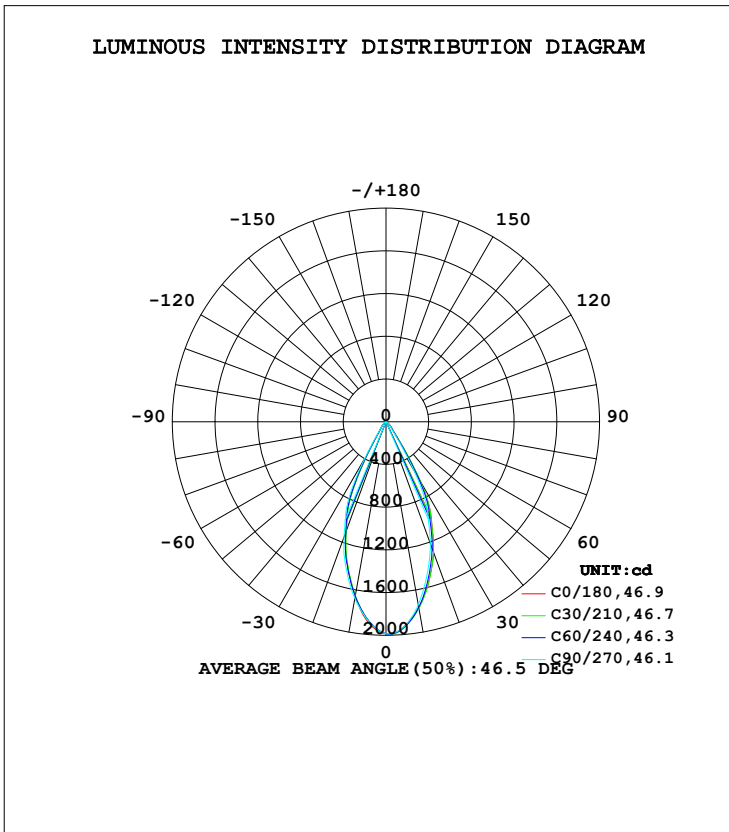


**LUMINAIRE PHOTOMETRIC TEST REPORT**

Test:U:36.50V I:0.3500A P:12.77W PF:1.000 Freq:0Hz Lamp Flux:1163.66x1 lm		
NAME: T100-13W-827-50	TYPE:Downlight	SERIAL No.:
SPEC.:3000K	DIM.: φ110mm*H79mm	
MFR.: NEKO LIGHTING AG		

DATA OF LAMP		PHOTOMETRIC DATA Eff: 91.09 lm/W			
MODEL	CITIZEN-3000K	I <sub>max</sub> (cd)	1991	S/MH (C0/180)	0.68
NOMINAL POWER (W)	13	LOR (%)	100.0	S/MH (C90/270)	0.71
RATED VOLTAGE (V)	38	TOTAL FLUX (lm)	1163.7	η UP, DN (C0-180)	0.0, 51.8
NOMINAL FLUX (lm)	1163.66	CIE CLASS	DIRECT	η UP, DN (C180-360)	0.0, 48.2
LAMPS INSIDE	1	η up (%)	0.0	CIBSE SHR NOM	0.75
TEST VOLTAGE (V)	37.5	η down (%)	100.0	CIBSE SHR MAX	0.75



C Range: 0 - 360DEG  
C Interval: 15.0DEG  
Test Speed: HIGH  
Temperature: 25.3DEG  
Operators: Jason  
Test Date: 2021-10-21

γ Range: 0 - 90DEG  
γ Interval: 0.5DEG  
Test System: EVERFINE GO-2000B\_V1 SYSTEM V2.0.362  
Humidity: 58%  
Test Distance: 8.967m [K=1.0000]  
Remarks:

**ZONAL FLUX DIAGRAM**

ZONAL FLUX DIAGRAM:

$\gamma$	C0	C45	C90	C135	C180	C225	C270	C315	$\gamma$	$\Phi$ zone	$\Phi$ total	%lum,lamp
10	1766	1779	1741	1700	1663	1649	1679	1724	0- 10	175.6	175.6	15.1,15.1
20	1302	1293	1215	1141	1093	1086	1149	1241	10- 20	406.7	582.2	50,50
30	643.4	644.3	516.2	389.6	330.3	321.6	408.3	532.8	20- 30	392.4	974.6	83.8,83.8
40	101.0	95.11	81.86	74.28	71.33	68.34	75.14	88.80	30- 40	119.2	1094	94,94
50	44.96	40.85	33.62	29.48	27.95	26.46	30.95	38.41	40- 50	42.70	1137	97.7,97.7
60	14.11	12.53	10.22	9.236	9.340	8.664	9.550	11.45	50- 60	17.81	1154	99.2,99.2
70	5.417	4.703	3.637	3.074	3.091	2.960	3.429	4.270	60- 70	6.739	1161	99.8,99.8
80	1.410	1.122	0.8117	0.5800	0.5874	0.6332	0.7354	1.080	70- 80	2.202	1163	100,100
90	0.1199	0.0784	0.0523	0.0471	0.0625	0.0679	0.0627	0.0837	80- 90	0.3774	1164	100,100
100									90-100			
110									100-110			
120									110-120			
130									120-130			
140									130-140			
150									140-150			
160									150-160			
170									160-170			
180									170-180			
DEG	LUMINOUS INTENSITY:cd									UNIT:lm		

Conical surface Flux(90deg): 1118.8 lm

%lum = 96.1%  
%lamp = 96.1%

Conical surface Flux(120deg): 1154.3 lm

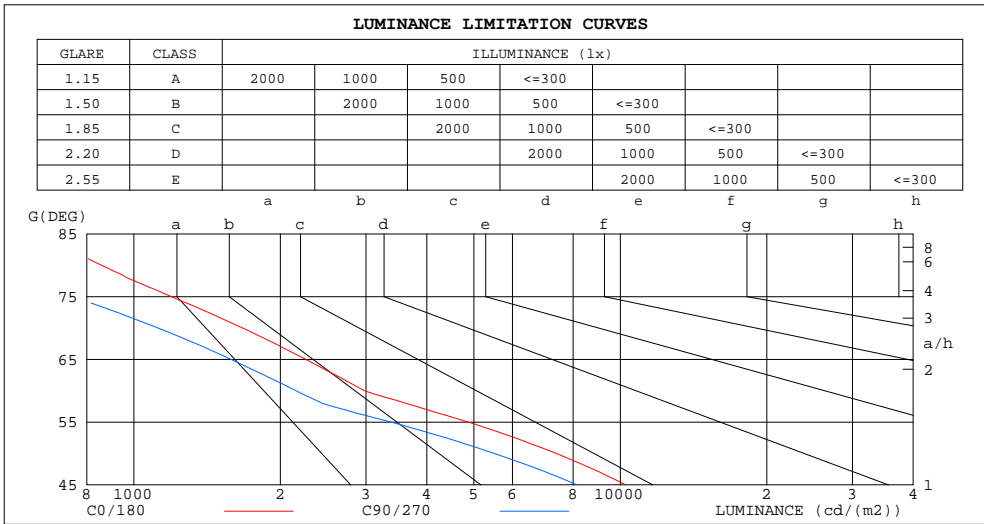
%lum = 99.2%  
%lamp = 99.2%

C Range: 0 - 360DEG  
C Interval: 15.0DEG  
Test Speed: HIGH  
Temperature:25.3DEG  
Operators:Jason  
Test Date:2021-10-21

$\gamma$  Range: 0 - 90DEG  
 $\gamma$  Interval: 0.5DEG  
Test System:EVERFINE GO-2000B\_V1 SYSTEM V2.0.362  
Humidity:58%  
Test Distance:8.967m [K=1.0000]  
Remarks:

**LUMINANCE LIMITATION CURVES**

Test:U:36.50V I:0.3500A P:12.77W PF:1.000 Freq:0Hz Lamp Flux:1163.66x1 lm		
NAME: T100-13W-827-50	TYPE:Downlight	SERIAL No.:
SPEC.:3000K	DIM.: φ110mm*H79mm	
MFR.: NEKO LIGHTING AG		



LUMINANCE cd/(m2)		
G(DEG)	C0/180	C90/270
85	677	323
80	857	492
75	1195	752
70	1672	1120
65	2256	1582
60	2978	2152
55	4868	3374
50	7384	5507
45	10262	8150

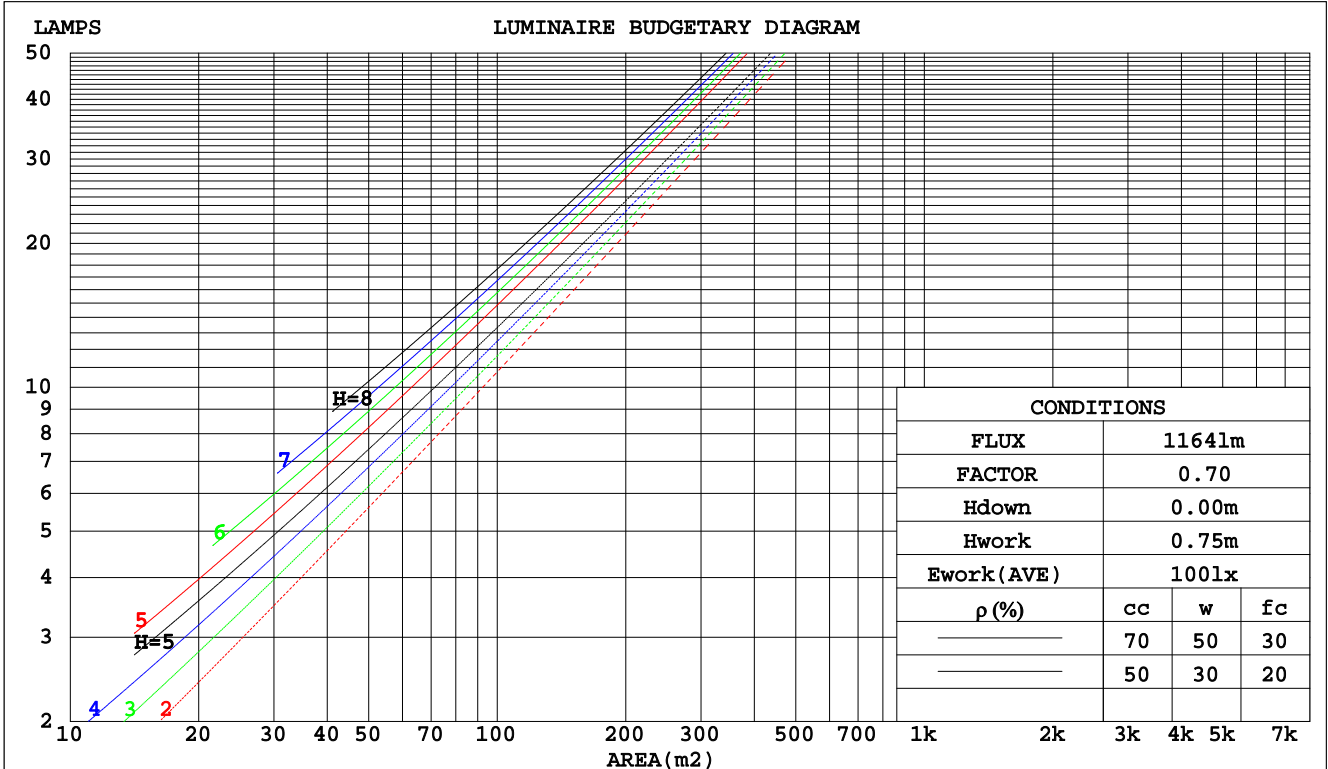
C Range: 0 - 360DEG  
 C Interval: 15.0DEG  
 Test Speed: HIGH  
 Temperature:25.3DEG  
 Operators:Jason  
 Test Date:2021-10-21

γ Range: 0 - 90DEG  
 γ Interval: 0.5DEG  
 Test System:EVERFINE GO-2000B\_V1 SYSTEM V2.0.362  
 Humidity:58%  
 Test Distance:8.967m [K=1.0000]  
 Remarks:

**CU AND LUMINAIRE BUDGETARY ESTIMATE DIAGRAM**

Test:U:36.50V I:0.3500A P:12.77W PF:1.000 Freq:0Hz Lamp Flux:1163.66x1 lm		
NAME: T100-13W-827-50	TYPE:Downlight	SERIAL No.:
SPEC.:3000K	DIM.: φ110mm*H79mm	
MFR.: NEKO LIGHTING AG		

pcc	80%			70%			50%			30%			10%			0
ρw	50%	30%	10%	50%	30%	10%	50%	30%	10%	50%	30%	10%	50%	30%	10%	0
ρfc	20%			20%			20%			20%			20%			0
RCR	RCR:Room Cavity Ratio															
	Coefficients of Utilization(CU)															
0.0	1.19	1.19	1.19	1.16	1.16	1.16	1.11	1.11	1.11	1.06	1.06	1.06	1.02	1.02	1.02	.00
1.0	1.11	1.09	1.07	1.09	1.07	1.05	1.05	1.03	1.02	1.01	1.00	.99	.98	.97	.96	.94
2.0	1.04	1.01	.97	1.03	.99	.96	.99	.97	.94	.96	.94	.92	.94	.92	.90	.89
3.0	.98	.93	.90	.97	.92	.89	.94	.91	.88	.92	.89	.86	.90	.87	.85	.84
4.0	.92	.87	.83	.91	.87	.83	.89	.85	.82	.87	.84	.81	.85	.83	.80	.79
5.0	.87	.82	.78	.86	.81	.78	.85	.80	.77	.83	.79	.76	.82	.78	.76	.74
6.0	.83	.77	.73	.82	.77	.73	.80	.76	.73	.79	.75	.72	.78	.74	.72	.70
7.0	.79	.73	.69	.78	.73	.69	.77	.72	.69	.75	.71	.68	.74	.71	.68	.67
8.0	.75	.69	.65	.74	.69	.65	.73	.68	.65	.72	.68	.65	.71	.67	.65	.63
9.0	.71	.66	.62	.71	.66	.62	.70	.65	.62	.69	.65	.62	.68	.64	.61	.60
10.0	.68	.63	.59	.67	.62	.59	.67	.62	.59	.66	.62	.59	.65	.61	.59	.57



C Range: 0 - 360DEG  
 C Interval: 15.0DEG  
 Test Speed: HIGH  
 Temperature: 25.3DEG  
 Operators: Jason  
 Test Date: 2021-10-21

γ Range: 0 - 90DEG  
 γ Interval: 0.5DEG  
 Test System: EVERFINE GO-2000B\_V1 SYSTEM V2.0.362  
 Humidity: 58%  
 Test Distance: 8.967m [K=1.0000]  
 Remarks:

WEC AND CCEC

Test:U:36.50V I:0.3500A P:12.77W PF:1.000 Freq:0Hz Lamp Flux:1163.66x1 lm		
NAME: T100-13W-827-50	TYPE:Downlight	SERIAL No.:
SPEC.:3000K	DIM.: φ110mm*H79mm	
MFR.: NEKO LIGHTING AG		

ρcc	80%			70%			50%			30%			10%			0
ρw	50%	30%	10%	50%	30%	10%	50%	30%	10%	50%	30%	10%	50%	30%	10%	0
ρfc	20%			20%			20%			20%			20%			0
RCR	RCR:Room Cavity Ratio						Wall Exitance Coefficients(WEC)									
0.0																
1.0	.167	.095	.030	.160	.091	.029	.148	.085	.027	.136	.079	.025	.126	.073	.023	
2.0	.159	.087	.027	.153	.084	.026	.143	.079	.025	.133	.075	.023	.124	.070	.022	
3.0	.150	.080	.024	.146	.078	.023	.137	.074	.023	.128	.070	.022	.121	.067	.021	
4.0	.143	.074	.022	.139	.072	.021	.131	.069	.021	.124	.066	.020	.117	.064	.019	
5.0	.136	.069	.020	.132	.068	.020	.125	.065	.019	.119	.063	.019	.113	.061	.018	
6.0	.129	.065	.019	.126	.064	.018	.120	.062	.018	.115	.060	.018	.110	.058	.017	
7.0	.123	.061	.017	.121	.060	.017	.115	.058	.017	.111	.057	.017	.106	.055	.016	
8.0	.118	.058	.016	.116	.057	.016	.111	.055	.016	.107	.054	.016	.103	.053	.015	
9.0	.113	.055	.015	.111	.054	.015	.107	.053	.015	.103	.052	.015	.099	.050	.015	
10.0	.109	.052	.014	.107	.051	.014	.103	.050	.014	.099	.049	.014	.096	.048	.014	

ρcc	80%			70%			50%			30%			10%			0
ρw	50%	30%	10%	50%	30%	10%	50%	30%	10%	50%	30%	10%	50%	30%	10%	0
ρfc	20%			20%			20%			20%			20%			0
RCR	RCR:Room Cavity Ratio						Ceiling Cavity Exitance Coefficients(CCEC)									
0.0	.190	.190	.190	.163	.163	.163	.111	.111	.111	.064	.064	.064	.020	.020	.020	
1.0	.170	.157	.146	.146	.135	.125	.100	.093	.087	.057	.054	.050	.018	.017	.016	
2.0	.154	.133	.114	.132	.114	.099	.091	.079	.069	.052	.046	.040	.017	.015	.013	
3.0	.141	.113	.091	.121	.098	.079	.083	.068	.055	.048	.040	.033	.015	.013	.011	
4.0	.131	.099	.074	.112	.085	.064	.077	.059	.045	.045	.035	.027	.014	.011	.009	
5.0	.121	.087	.061	.104	.075	.053	.072	.052	.038	.042	.031	.022	.013	.010	.007	
6.0	.114	.077	.051	.098	.067	.045	.067	.047	.032	.039	.028	.019	.013	.009	.006	
7.0	.107	.070	.044	.092	.060	.038	.064	.042	.027	.037	.025	.016	.012	.008	.005	
8.0	.101	.063	.037	.087	.055	.033	.060	.039	.023	.035	.023	.014	.011	.007	.005	
9.0	.096	.058	.032	.083	.050	.028	.057	.035	.020	.033	.021	.012	.011	.007	.004	
10.0	.091	.054	.028	.079	.046	.025	.055	.033	.018	.032	.019	.011	.010	.006	.003	

C Range: 0 - 360DEG  
 C Interval: 15.0DEG  
 Test Speed: HIGH  
 Temperature:25.3DEG  
 Operators:Jason  
 Test Date:2021-10-21

γ Range: 0 - 90DEG  
 γ Interval: 0.5DEG  
 Test System:EVERFINE GO-2000B\_V1 SYSTEM V2.0.362  
 Humidity:58%  
 Test Distance:8.967m [K=1.0000]  
 Remarks:

UGR(Unified Glare Rating) Table

Test:U:36.50V I:0.3500A P:12.77W PF:1.000 Freq:0Hz Lamp Flux:1163.66x1 lm		
NAME: T100-13W-827-50	TYPE:Downlight	SERIAL No.:
SPEC.:3000K	DIM.: φ110mm*H79mm	
MFR.: NEKO LIGHTING AG		

ceiling/cavity	0.7	0.7	0.5	0.5	0.3	0.7	0.7	0.5	0.5	0.3
walls	0.5	0.3	0.5	0.3	0.3	0.5	0.3	0.5	0.3	0.3
working plane	0.2	0.2	0.2	0.2	0.2	0.2	0.2	0.2	0.2	0.2
Room dimensions	Viewed crosswise					Viewed endwise				
x = 2H y = 2H	15.0	15.9	15.2	16.1	16.2	13.7	14.6	13.9	14.7	14.9
3H	15.0	15.8	15.2	16.0	16.2	13.6	14.4	13.9	14.6	14.8
4H	14.9	15.7	15.2	15.9	16.1	13.6	14.3	13.8	14.5	14.8
6H	14.9	15.6	15.2	15.8	16.1	13.5	14.2	13.8	14.4	14.7
8H	14.8	15.5	15.1	15.8	16.0	13.5	14.1	13.8	14.4	14.6
12H	14.8	15.4	15.1	15.7	16.0	13.4	14.1	13.7	14.3	14.6
4H 2H	14.9	15.6	15.1	15.8	16.1	13.6	14.3	13.9	14.6	14.8
3H	14.8	15.5	15.2	15.8	16.0	13.5	14.2	13.9	14.5	14.7
4H	14.8	15.4	15.1	15.7	16.0	13.5	14.1	13.8	14.4	14.7
6H	14.7	15.3	15.1	15.6	15.9	13.4	13.9	13.8	14.3	14.6
8H	14.7	15.2	15.1	15.5	15.9	13.4	13.8	13.7	14.2	14.6
12H	14.6	15.1	15.1	15.5	15.9	13.3	13.8	13.7	14.1	14.5
8H 4H	14.7	15.2	15.1	15.5	15.9	13.4	13.8	13.8	14.2	14.6
6H	14.6	15.0	15.0	15.4	15.8	13.3	13.7	13.7	14.1	14.5
8H	14.6	14.9	15.0	15.3	15.8	13.2	13.6	13.7	14.0	14.5
12H	14.5	14.8	15.0	15.3	15.7	13.2	13.5	13.7	13.9	14.4
12H 4H	14.6	15.1	15.0	15.4	15.8	13.3	13.8	13.7	14.1	14.5
6H	14.6	14.9	15.0	15.3	15.8	13.2	13.6	13.7	14.0	14.4
8H	14.5	14.8	15.0	15.3	15.7	13.2	13.5	13.7	13.9	14.4
Variations with the observer position at spacings:										
S = 1.0H	+ 2.2 / - 3.3					+ 1.9 / - 3.9				
1.5H	+ 3.0 / - 2.7					+ 2.2 / - 2.6				
2.0H	+ 3.5 / - 3.6					+ 3.6 / - 3.6				

CIE Pub.117, 1164 lm Total Lamp Luminous Flux Correct (8log(F/F0) = 0.5)

C Range: 0 - 360DEG  
 C Interval: 15.0DEG  
 Test Speed: HIGH  
 Temperature:25.3DEG  
 Operators:Jason  
 Test Date:2021-10-21

γ Range: 0 - 90DEG  
 γ Interval: 0.5DEG  
 Test System:EVERFINE GO-2000B\_V1 SYSTEM V2.0.362  
 Humidity:58%  
 Test Distance:8.967m [K=1.0000]  
 Remarks:

UTILIZATION FACTORS TABLE

Test:U:36.50V I:0.3500A P:12.77W PF:1.000 Freq:0Hz Lamp Flux:1163.66x1 lm		
NAME: T100-13W-827-50	TYPE:Downlight	SERIAL No.:
SPEC.:3000K	DIM.: φ110mm*H79mm	
MFR.: NEKO LIGHTING AG		

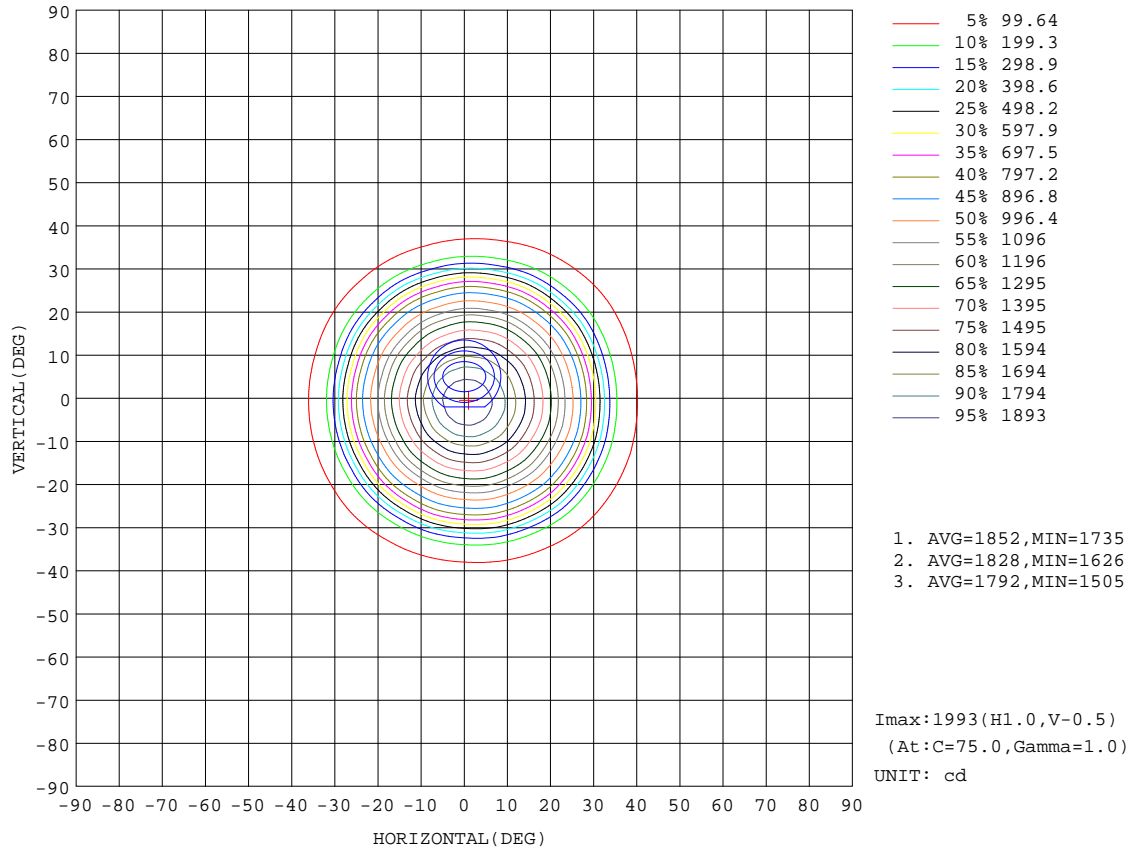
REFLECTANCE										
Ceiling	0.8	0.8	0.8	0.7	0.7	0.7	0.5	0.5	0.5	0
Walls	0.7	0.5	0.3	0.7	0.5	0.3	0.7	0.5	0.3	0
Working plane	0.2	0.2	0.2	0.2	0.2	0.2	0.2	0.2	0.2	0
ROOM INDEX	UTILIZATION FACTORS(PERCENT) $k(RI) \times RCR = 5$									
k = 0.60	88	81	78	87	81	78	86	81	78	74
0.80	95	89	86	94	89	86	93	88	85	82
1.00	100	94	90	99	94	90	97	93	90	86
1.25	103	98	95	102	98	95	100	97	94	90
1.50	106	101	98	105	101	98	103	99	97	92
2.00	109	105	102	107	104	101	105	102	99	94
2.50	110	107	104	109	105	103	106	103	101	95
3.00	112	109	106	110	107	105	107	104	103	96
4.00	114	111	109	112	110	108	108	106	105	98
5.00	115	113	111	113	111	110	109	108	106	99
ROOM INDEX	UF(total)									Direct
According to DIN EN 13032-2 2004			Suspended				SHRNOM = 1.25			

C Range: 0 - 360DEG  
 C Interval: 15.0DEG  
 Test Speed: HIGH  
 Temperature:25.3DEG  
 Operators:Jason  
 Test Date:2021-10-21

$\gamma$  Range: 0 - 90DEG  
 $\gamma$  Interval: 0.5DEG  
 Test System:EVERFINE GO-2000B\_V1 SYSTEM V2.0.362  
 Humidity:58%  
 Test Distance:8.967m [K=1.0000]  
 Remarks:

**ISOCANDELA DIAGRAM**

Test:U:36.50V I:0.3500A P:12.77W PF:1.000 Freq:0Hz Lamp Flux:1163.66x1 lm		
NAME: T100-13W-827-50	TYPE:Downlight	SERIAL No.:
SPEC.:3000K	DIM.: φ110mm*H79mm	
MFR.: NEKO LIGHTING AG		



C Range: 0 - 360DEG  
 C Interval: 15.0DEG  
 Test Speed: HIGH  
 Temperature:25.3DEG  
 Operators:Jason  
 Test Date:2021-10-21

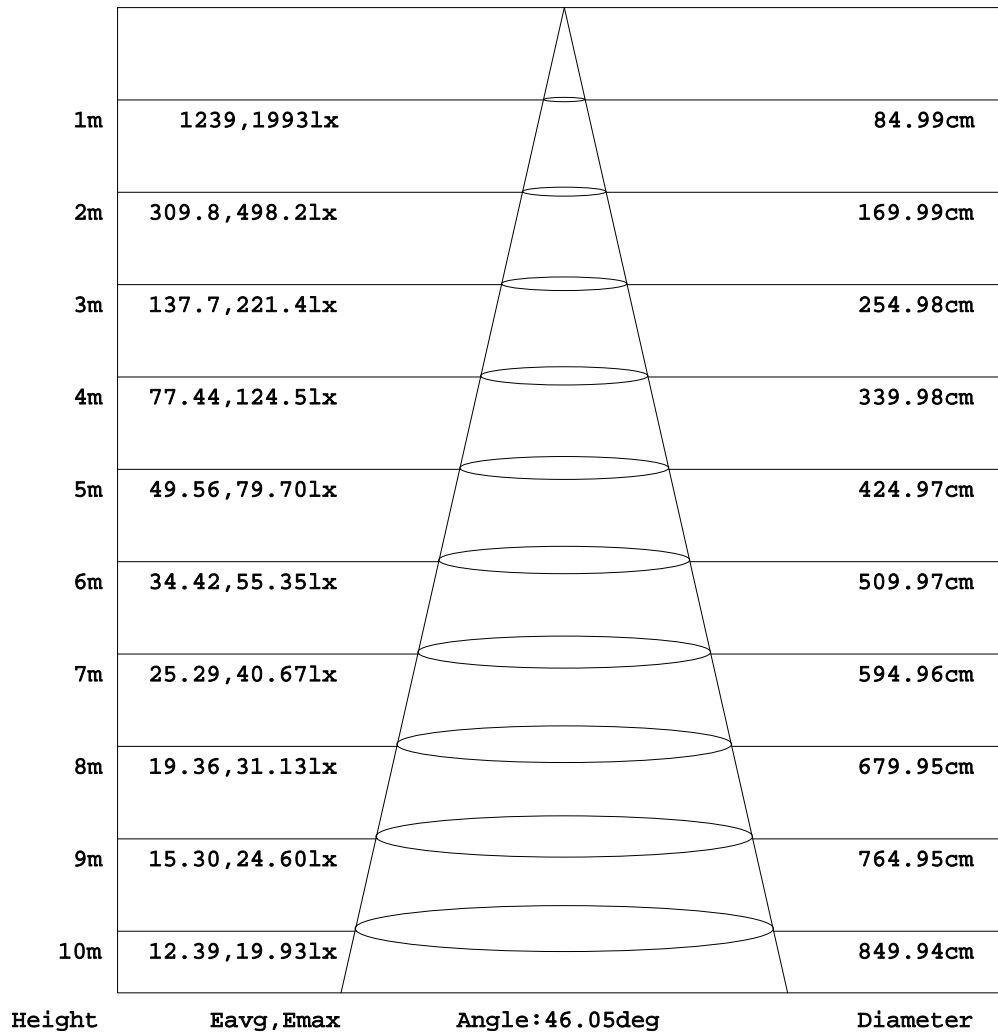
γ Range: 0 - 90DEG  
 γ Interval: 0.5DEG  
 Test System:EVERFINE GO-2000B\_V1 SYSTEM V2.0.362  
 Humidity:58%  
 Test Distance:8.967m [K=1.0000]  
 Remarks:



**AAI Figure**

Test:U:36.50V I:0.3500A P:12.77W PF:1.000 Freq:0Hz Lamp Flux:1163.66x1 lm		
NAME: T100-13W-827-50	TYPE:Downlight	SERIAL No.:
SPEC.:3000K	DIM.: φ110mm*H79mm	
MFR.: NEKO LIGHTING AG		

Flux out:736.0 lm



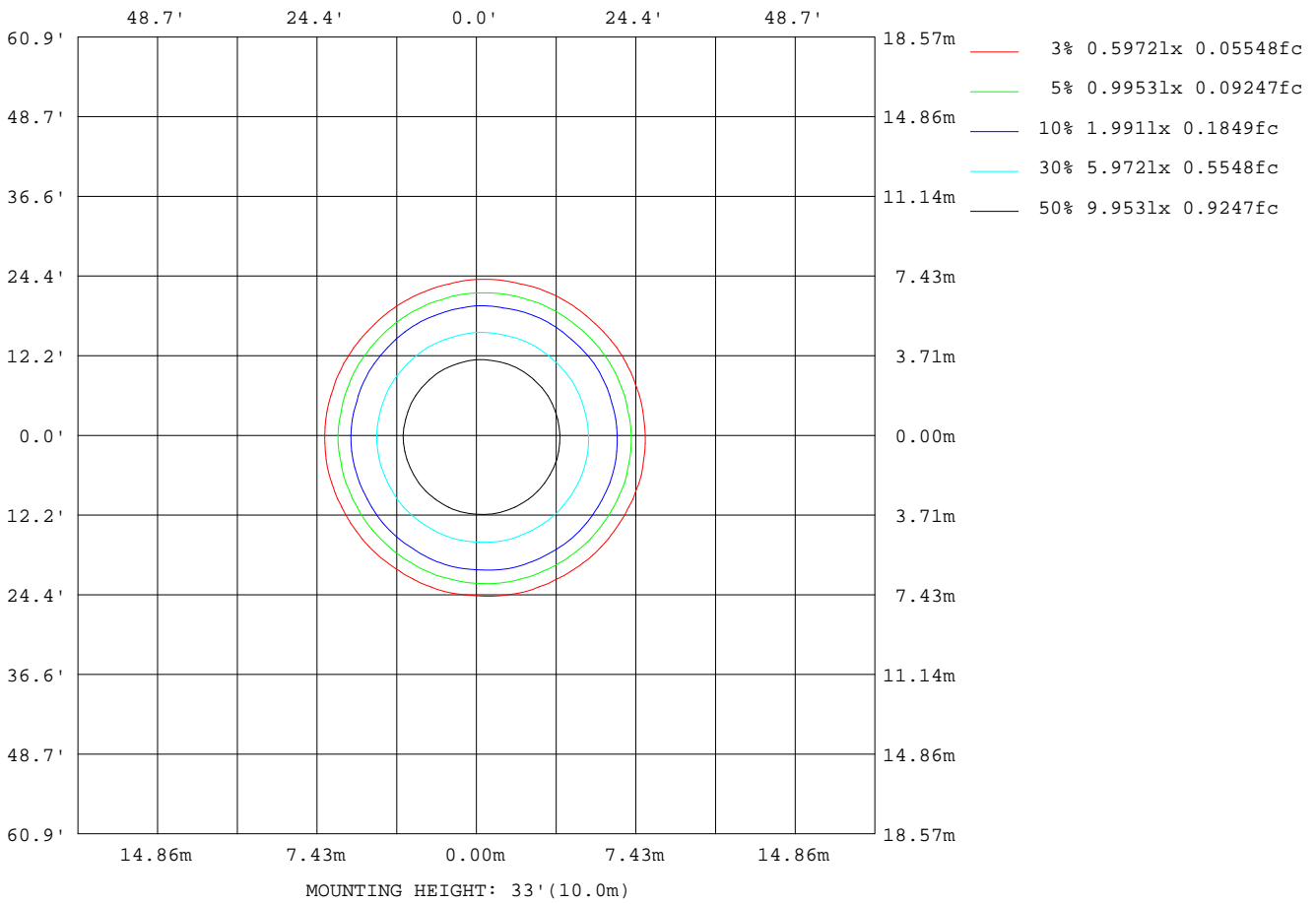
Note:The Curves indicate the illuminated area and the average illumination when the luminaire is at different distance.

C Range: 0 - 360DEG  
C Interval: 15.0DEG  
Test Speed: HIGH  
Temperature:25.3DEG  
Operators:Jason  
Test Date:2021-10-21

γ Range: 0 - 90DEG  
γ Interval: 0.5DEG  
Test System:EVERFINE GO-2000B\_V1 SYSTEM V2.0.362  
Humidity:58%  
Test Distance:8.967m [K=1.0000]  
Remarks:

**ISOLUX DIAGRAM**

Test:U:36.50V I:0.3500A P:12.77W PF:1.000 Freq:0Hz Lamp Flux:1163.66x1 lm		
NAME: T100-13W-827-50	TYPE:Downlight	SERIAL No.:
SPEC.:3000K	DIM.: φ110mm*H79mm	
MFR.: NEKO LIGHTING AG		



C Range: 0 - 360DEG  
 C Interval: 15.0DEG  
 Test Speed: HIGH  
 Temperature:25.3DEG  
 Operators:Jason  
 Test Date:2021-10-21

γ Range: 0 - 90DEG  
 γ Interval: 0.5DEG  
 Test System:EVERFINE GO-2000B\_V1 SYSTEM V2.0.362  
 Humidity:58%  
 Test Distance:8.967m [K=1.0000]  
 Remarks:

LED Avg.L Report

Test:U:36.50V I:0.3500A P:12.77W PF:1.000 Freq:0Hz Lamp Flux:1163.66x1 lm		
NAME: T100-13W-827-50	TYPE:Downlight	SERIAL No.:
SPEC.:3000K	DIM.: φ110mm*H79mm	
MFR.: NEKO LIGHTING AG		

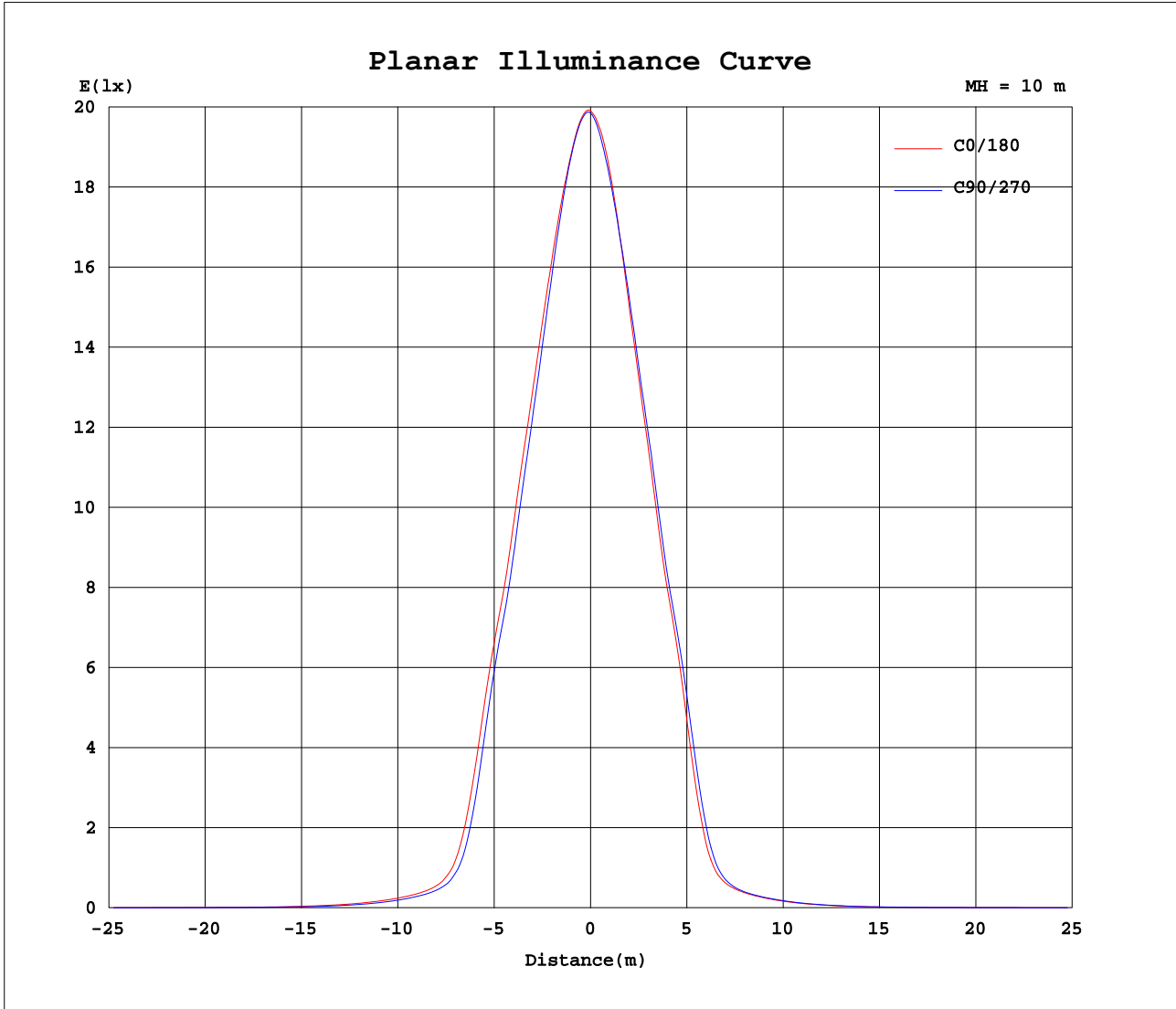
AvgL	cd/m2
L_0~180 (65) av	1830
L_0~180 (75) av	899
L_0~180 (85) av	410
L_90~270 (65) av	1537
L_90~270 (75) av	729
L_90~270 (85) av	294
L_45 (65) av	1626
L_45 (75) av	784
L_45 (85) av	344

Standard: GB/T 29293-2012

C Range: 0 - 360DEG  
C Interval: 15.0DEG  
Test Speed: HIGH  
Temperature:25.3DEG  
Operators:Jason  
Test Date:2021-10-21

γ Range: 0 - 90DEG  
γ Interval: 0.5DEG  
Test System:EVERFINE GO-2000B\_V1 SYSTEM V2.0.362  
Humidity:58%  
Test Distance:8.967m [K=1.0000]  
Remarks:

Planar Illuminance Curve



C Range: 0 - 360DEG  
 C Interval: 15.0DEG  
 Test Speed: HIGH  
 Temperature: 25.3DEG  
 Operators: Jason  
 Test Date: 2021-10-21

$\gamma$  Range: 0 - 90DEG  
 $\gamma$  Interval: 0.5DEG  
 Test System: EVERFINE GO-2000B\_V1 SYSTEM V2.0.362  
 Humidity: 58%  
 Test Distance: 8.967m [K=1.0000]  
 Remarks:

LUMINOUS DISTRIBUTION INTENSITY DATA

Test:U:36.50V I:0.3500A P:12.77W PF:1.000 Freq:0Hz Lamp Flux:1163.66x1 lm		
NAME: T100-13W-827-50	TYPE:Downlight	SERIAL No.:
SPEC.:3000K	DIM.: $\phi$ 110mm*H79mm	
MFR.: NEKO LIGHTING AG		

Table--1

UNIT: cd

C (DEG) γ (DEG)	0	15	30	45	60	75	90	105	120	135	150	165	180	195	210	225	240	255	270
0	1985	1985	1985	1985	1985	1985	1985	1985	1985	1985	1985	1985	1985	1985	1985	1985	1985	1985	1985
5	1926	1937	1937	1941	1935	1935	1927	1925	1914	1911	1900	1895	1889	1880	1876	1869	1870	1868	1874
10	1766	1779	1775	1779	1765	1760	1741	1732	1710	1700	1679	1671	1663	1651	1654	1649	1659	1663	1679
15	1550	1561	1552	1549	1525	1513	1485	1473	1446	1434	1411	1403	1394	1384	1388	1386	1399	1410	1433
20	1302	1313	1301	1293	1265	1248	1215	1194	1160	1141	1112	1102	1093	1081	1086	1086	1104	1116	1149
25	1005	1015	1001	993	967	950	920	901	867	848	817	805	795	778	788	787	812	825	861
30	643	667	651	644	603	575	516	478	419	390	347	339	330	311	323	322	351	364	408
35	217	229	220	214	192	178	159	144	129	123	116	114	113	109	109	109	114	118	129
40	101	102	97.8	95.1	89.8	86.6	81.9	79.4	75.9	74.3	72.0	71.9	71.3	69.7	69.0	68.3	70.0	71.6	75.1
45	68.7	68.8	65.8	63.7	60.2	58.0	54.7	52.8	50.2	49.2	47.6	47.6	47.0	45.6	45.2	44.8	46.3	47.8	50.7
50	45.0	44.9	42.6	40.9	38.1	36.3	33.6	32.2	30.3	29.5	28.4	28.3	27.9	26.9	26.7	26.5	27.6	28.7	30.9
55	26.4	26.5	24.8	23.4	21.4	20.1	18.4	17.3	16.1	15.6	15.0	15.1	15.0	14.4	14.3	14.0	14.7	15.3	16.7
60	14.1	14.1	13.3	12.5	11.6	11.0	10.2	9.88	9.35	9.24	9.04	9.26	9.34	9.03	8.89	8.66	8.88	9.03	9.55
65	9.03	9.08	8.44	7.95	7.27	6.87	6.35	6.08	5.72	5.61	5.48	5.59	5.66	5.49	5.42	5.31	5.47	5.64	5.98
70	5.42	5.44	5.04	4.70	4.27	3.99	3.64	3.42	3.18	3.07	2.99	3.05	3.09	3.03	2.98	2.96	3.06	3.20	3.43
75	2.93	2.92	2.71	2.47	2.24	2.03	1.85	1.69	1.58	1.48	1.47	1.47	1.49	1.50	1.46	1.48	1.52	1.63	1.74
80	1.41	1.37	1.28	1.12	1.02	0.88	0.81	0.69	0.67	0.58	0.61	0.57	0.59	0.62	0.58	0.63	0.62	0.71	0.74
85	0.56	0.50	0.49	0.39	0.37	0.27	0.27	0.18	0.21	0.14	0.17	0.11	0.12	0.17	0.13	0.19	0.15	0.23	0.22
90	0.12	0.11	0.10	0.08	0.07	0.05	0.05	0.05	0.05	0.05	0.05	0.05	0.05	0.06	0.07	0.07	0.07	0.07	0.06

C Range: 0 - 360DEG  
 C Interval: 15.0DEG  
 Test Speed: HIGH  
 Temperature: 25.3DEG  
 Operators: Jason  
 Test Date: 2021-10-21  
 γ Range: 0 - 90DEG  
 γ Interval: 0.5DEG  
 Test System: EVERFINE GO-2000B\_V1 SYSTEM V2.0.362  
 Humidity: 58%  
 Test Distance: 8.967m [K=1.0000]  
 Remarks:

LUMINOUS DISTRIBUTION INTENSITY DATA

Test:U:36.50V I:0.3500A P:12.77W PF:1.000 Freq:0Hz Lamp Flux:1163.66x1 lm		
NAME: T100-13W-827-50	TYPE:Downlight	SERIAL No.:
SPEC.:3000K	DIM.: φ110mm*H79mm	
MFR.: NEKO LIGHTING AG		

Table--2

UNIT: cd

C (DEG) \ γ (DEG)	285	300	315	330	345														
0	1985	1985	1985	1985	1985														
5	1877	1889	1896	1911	1919														
10	1689	1710	1724	1747	1758														
15	1450	1482	1503	1532	1543														
20	1172	1214	1241	1277	1291														
25	883	922	946	979	994														
30	437	495	533	592	619														
35	138	154	169	190	204														
40	78.8	84.5	88.8	94.6	98.5														
45	53.2	57.2	60.2	64.4	67.0														
50	32.9	36.0	38.4	41.8	43.8														
55	17.8	19.9	21.7	24.2	25.7														
60	9.94	10.7	11.4	12.6	13.5														
65	6.27	6.78	7.23	8.00	8.61														
70	3.65	3.96	4.27	4.74	5.16														
75	1.89	2.06	2.27	2.52	2.78														
80	0.86	0.93	1.08	1.18	1.34														
85	0.31	0.31	0.41	0.43	0.54														
90	0.06	0.06	0.08	0.09	0.12														

C Range: 0 - 360DEG  
 C Interval: 15.0DEG  
 Test Speed: HIGH  
 Temperature:25.3DEG  
 Operators:Jason  
 Test Date:2021-10-21

γ Range: 0 - 90DEG  
 γ Interval: 0.5DEG  
 Test System:EVERFINE GO-2000B\_V1 SYSTEM V2.0.362  
 Humidity:58%  
 Test Distance:8.967m [K=1.0000]  
 Remarks: