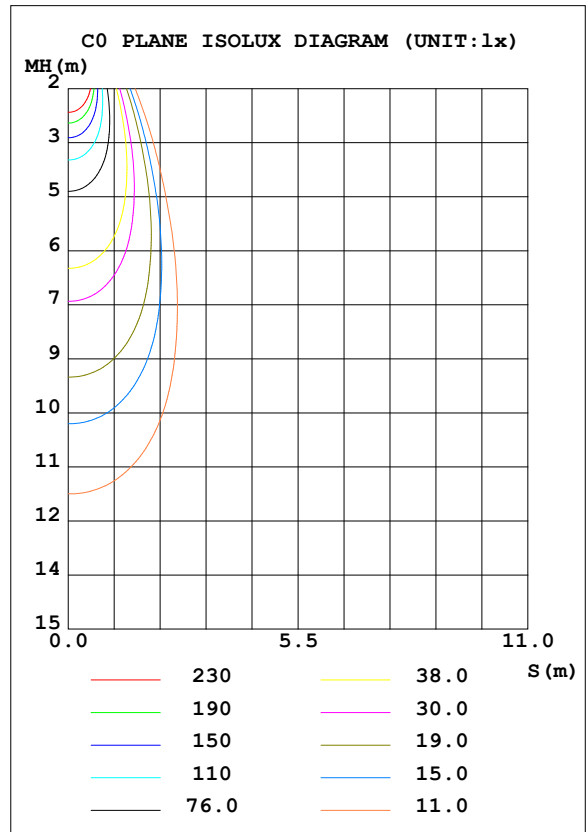
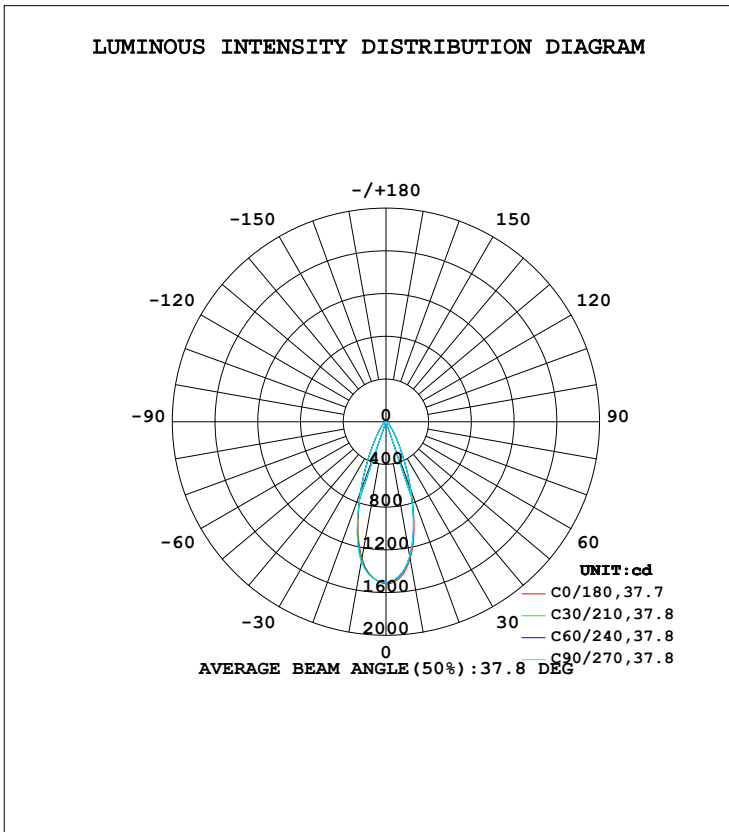


**LUMINAIRE PHOTOMETRIC TEST REPORT**

Test:U:29.50V I:0.3500A P:10.32W PF:1.000 Freq:0Hz Lamp Flux:783.525x1 lm		
NAME: M3-11W-927-35	TYPE:Downlight	SERIAL No.:
SPEC.:2700K	DIM.: φ50mm*H40mm	
MFR.: NEKO LIGHTING AG		

DATA OF LAMP		PHOTOMETRIC DATA Eff: 75.89 lm/W			
MODEL	CITIZEN-2700K	I <sub>max</sub> (cd)	1518	S/MH (C0/180)	0.62
NOMINAL POWER (W)	11	LOR (%)	100.0	S/MH (C90/270)	0.62
RATED VOLTAGE (V)	220	TOTAL FLUX (lm)	783.53	η UP, DN (C0-180)	0.0,49.6
NOMINAL FLUX (lm)	783.525	CIE CLASS	DIRECT	η UP, DN (C180-360)	0.0,50.4
LAMPS INSIDE	1	η up (%)	0.0	CIBSE SHR NOM	0.50
TEST VOLTAGE (V)	220	η down (%)	100.0	CIBSE SHR MAX	0.60



C Range: 0 - 360DEG  
 C Interval: 15.0DEG  
 Test Speed: HIGH  
 Temperature: 25.3DEG  
 Operators: Jason  
 Test Date: 2021-11-09

γ Range: 0 - 90DEG  
 γ Interval: 0.5DEG  
 Test System: EVERFINE GO-2000B\_V1 SYSTEM V2.0.362  
 Humidity: 58%  
 Test Distance: 8.967m [K=1.0000]  
 Remarks:

**ZONAL FLUX DIAGRAM**

ZONAL FLUX DIAGRAM:

$\gamma$	C0	C45	C90	C135	C180	C225	C270	C315	$\gamma$	$\Phi$ zone	$\Phi$ total	%lum,lamp
10	1300	1285	1277	1278	1298	1314	1330	1300	0- 10	133.9	133.9	17.1,17.1
20	683.4	679.4	667.4	673.6	690.6	686.1	694.8	681.0	10- 20	275.1	408.9	52.2,52.2
30	233.7	232.9	228.9	232.6	235.4	235.4	236.0	228.2	20- 30	190.6	599.6	76.5,76.5
40	81.78	83.28	81.53	81.93	83.42	83.52	83.55	78.90	30- 40	87.61	687.2	87.7,87.7
50	39.10	38.41	38.71	39.36	39.75	40.10	40.85	38.29	40- 50	43.21	730.4	93.2,93.2
60	23.20	22.87	23.78	22.81	22.54	22.54	23.74	22.23	50- 60	26.99	757.4	96.7,96.7
70	11.21	11.03	11.37	11.62	12.09	11.87	11.51	10.79	60- 70	16.86	774.2	98.8,98.8
80	3.702	3.725	3.958	3.961	4.158	4.014	3.871	3.595	70- 80	7.823	782.1	99.8,99.8
90	0.0523	0.0523	0.0523	0.0523	0.0836	0.0941	0.0888	0.0836	80- 90	1.460	783.5	100,100
100									90-100			
110									100-110			
120									110-120			
130									120-130			
140									130-140			
150									140-150			
160									150-160			
170									160-170			
180									170-180			
DEG	LUMINOUS INTENSITY:cd									UNIT:lm		

Conical surface Flux(90deg): 711.8 lm

%lum = 90.8%  
%lamp = 90.8%

Conical surface Flux(120deg): 757.38 lm

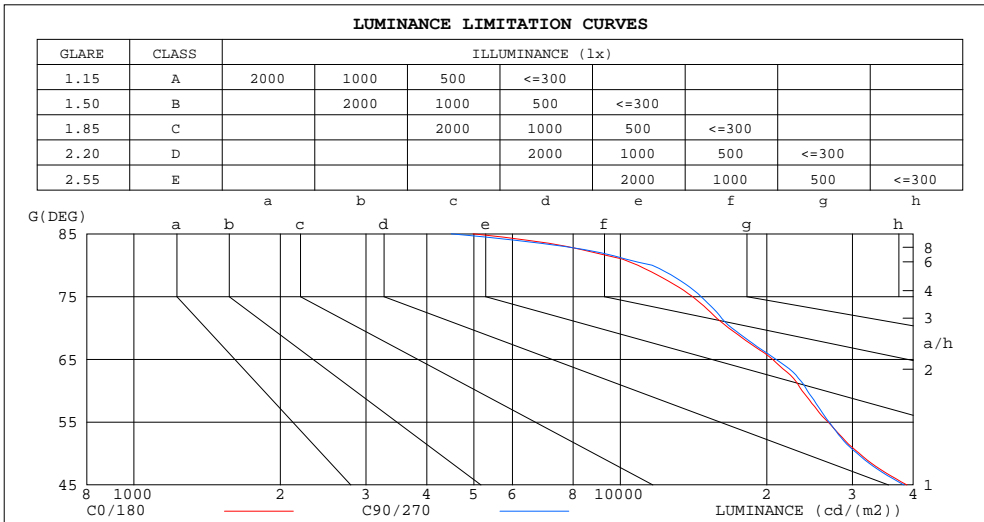
%lum = 96.7%  
%lamp = 96.7%

C Range: 0 - 360DEG  
C Interval: 15.0DEG  
Test Speed: HIGH  
Temperature:25.3DEG  
Operators:Jason  
Test Date:2021-11-09

$\gamma$  Range: 0 - 90DEG  
 $\gamma$  Interval: 0.5DEG  
Test System:EVERFINE GO-2000B\_V1 SYSTEM V2.0.362  
Humidity:58%  
Test Distance:8.967m [K=1.0000]  
Remarks:

**LUMINANCE LIMITATION CURVES**

Test:U:29.50V I:0.3500A P:10.32W PF:1.000 Freq:0Hz Lamp Flux:783.525x1 lm		
NAME: M3-11W-927-35	TYPE:Downlight	SERIAL No.:
SPEC.:2700K	DIM.: φ50mm*H40mm	
MFR.: NEKO LIGHTING AG		



LUMINANCE cd/(m2)		
G(DEG)	C0/180	C90/270
85	4982	4493
80	10862	11616
75	14073	14649
70	16695	16944
65	20560	20891
60	23641	24231
55	26742	26861
50	30996	30685
45	38826	38286

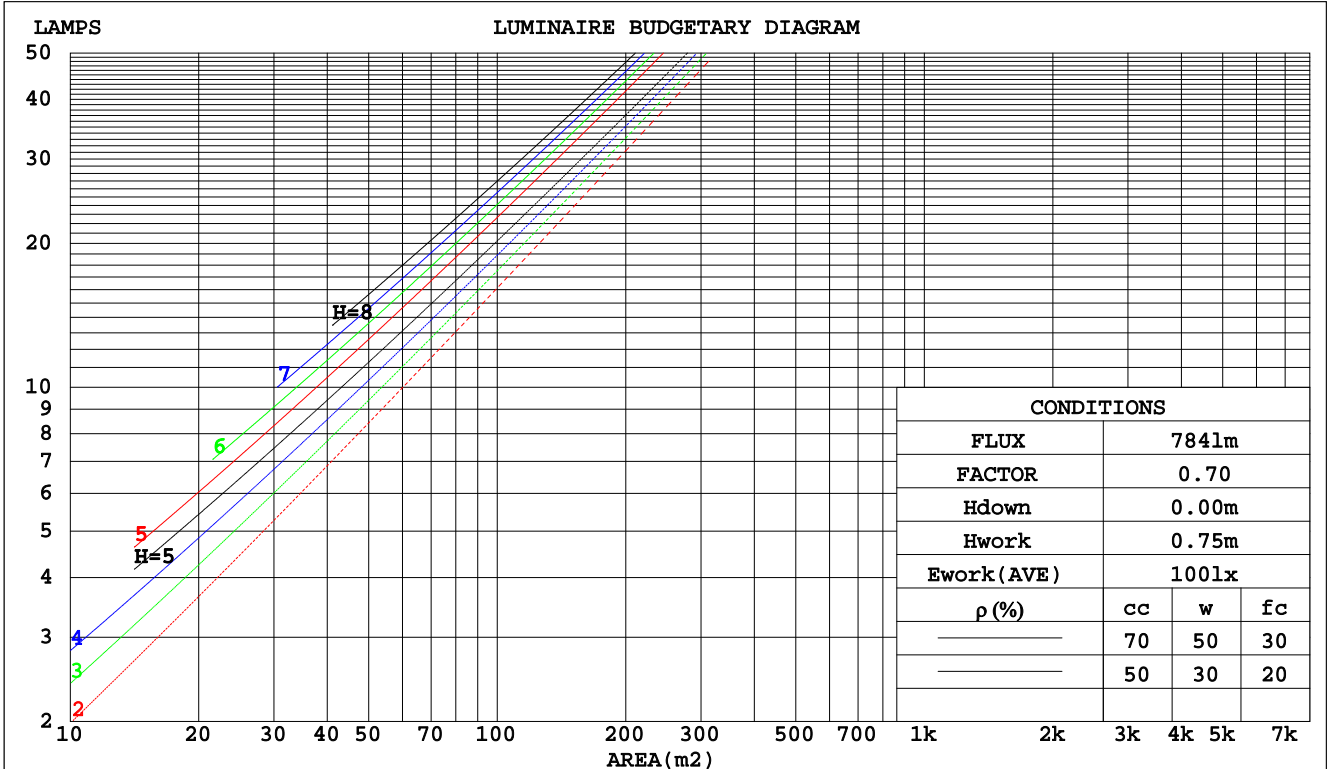
C Range: 0 - 360DEG  
 C Interval: 15.0DEG  
 Test Speed: HIGH  
 Temperature:25.3DEG  
 Operators:Jason  
 Test Date:2021-11-09

γ Range: 0 - 90DEG  
 γ Interval: 0.5DEG  
 Test System:EVERFINE GO-2000B\_V1 SYSTEM V2.0.362  
 Humidity:58%  
 Test Distance:8.967m [K=1.0000]  
 Remarks:

**CU AND LUMINAIRE BUDGETARY ESTIMATE DIAGRAM**

Test:U:29.50V I:0.3500A P:10.32W PF:1.000 Freq:0Hz Lamp Flux:783.525x1 lm		
NAME: M3-11W-927-35	TYPE:Downlight	SERIAL No.:
SPEC.:2700K	DIM.: φ50mm*H40mm	
MFR.: NEKO LIGHTING AG		

pcc	80%			70%			50%			30%			10%			0
pw	50%	30%	10%	50%	30%	10%	50%	30%	10%	50%	30%	10%	50%	30%	10%	0
pfc	20%			20%			20%			20%			20%			0
RCR	RCR:Room Cavity Ratio															
	Coefficients of Utilization(CU)															
0.0	1.19	1.19	1.19	1.16	1.16	1.16	1.11	1.11	1.11	1.06	1.06	1.06	1.02	1.02	1.02	.00
1.0	1.11	1.08	1.06	1.08	1.06	1.04	1.04	1.03	1.01	1.01	.99	.98	.97	.96	.95	.93
2.0	1.03	.99	.96	1.01	.98	.95	.98	.95	.93	.95	.93	.91	.92	.90	.89	.87
3.0	.96	.92	.88	.95	.91	.87	.92	.89	.86	.90	.87	.84	.88	.85	.83	.81
4.0	.91	.85	.81	.89	.84	.81	.87	.83	.80	.85	.82	.79	.83	.80	.78	.76
5.0	.85	.80	.76	.84	.79	.75	.83	.78	.75	.81	.77	.74	.80	.76	.73	.72
6.0	.81	.75	.71	.80	.75	.71	.79	.74	.70	.77	.73	.70	.76	.72	.69	.68
7.0	.77	.71	.67	.76	.71	.67	.75	.70	.67	.74	.69	.66	.73	.69	.66	.64
8.0	.73	.67	.64	.72	.67	.63	.71	.67	.63	.70	.66	.63	.69	.66	.63	.61
9.0	.70	.64	.60	.69	.64	.60	.68	.63	.60	.67	.63	.60	.67	.63	.60	.58
10.0	.67	.61	.58	.66	.61	.57	.65	.61	.57	.65	.60	.57	.64	.60	.57	.56



C Range: 0 - 360DEG  
 C Interval: 15.0DEG  
 Test Speed: HIGH  
 Temperature: 25.3DEG  
 Operators: Jason  
 Test Date: 2021-11-09

γ Range: 0 - 90DEG  
 γ Interval: 0.5DEG  
 Test System: EVERFINE GO-2000B\_V1 SYSTEM V2.0.362  
 Humidity: 58%  
 Test Distance: 8.967m [K=1.0000]  
 Remarks:

WEC AND CCEC

Test:U:29.50V I:0.3500A P:10.32W PF:1.000 Freq:0Hz Lamp Flux:783.525x1 lm		
NAME: M3-11W-927-35	TYPE:Downlight	SERIAL No.:
SPEC.:2700K	DIM.: φ50mm*H40mm	
MFR.: NEKO LIGHTING AG		

ρcc	80%			70%			50%			30%			10%			0
ρw	50%	30%	10%	50%	30%	10%	50%	30%	10%	50%	30%	10%	50%	30%	10%	0
ρfc	20%			20%			20%			20%			20%			0
RCR	RCR:Room Cavity Ratio						Wall Exitance Coefficients(WEC)									
0.0																
1.0	.180	.102	.032	.173	.099	.031	.161	.092	.029	.149	.086	.028	.138	.080	.026	
2.0	.171	.093	.029	.165	.091	.028	.154	.086	.027	.145	.081	.025	.135	.077	.024	
3.0	.161	.085	.026	.156	.083	.025	.147	.080	.024	.138	.076	.023	.131	.072	.022	
4.0	.151	.079	.023	.147	.077	.023	.139	.074	.022	.132	.071	.021	.126	.068	.021	
5.0	.143	.073	.021	.139	.071	.021	.133	.069	.020	.126	.067	.020	.120	.064	.019	
6.0	.135	.068	.019	.132	.067	.019	.126	.065	.019	.121	.063	.018	.115	.061	.018	
7.0	.128	.063	.018	.126	.063	.018	.120	.061	.018	.115	.059	.017	.111	.058	.017	
8.0	.122	.060	.017	.120	.059	.017	.115	.057	.016	.111	.056	.016	.107	.055	.016	
9.0	.116	.056	.016	.114	.056	.016	.110	.054	.015	.106	.053	.015	.102	.052	.015	
10.0	.111	.053	.015	.109	.053	.015	.106	.052	.015	.102	.051	.014	.099	.050	.014	

ρcc	80%			70%			50%			30%			10%			0
ρw	50%	30%	10%	50%	30%	10%	50%	30%	10%	50%	30%	10%	50%	30%	10%	0
ρfc	20%			20%			20%			20%			20%			0
RCR	RCR:Room Cavity Ratio						Ceiling Cavity Exitance Coefficients(CCEC)									
0.0	.190	.190	.190	.163	.163	.163	.111	.111	.111	.064	.064	.064	.020	.020	.020	
1.0	.171	.157	.145	.147	.135	.124	.100	.093	.086	.058	.054	.050	.018	.017	.016	
2.0	.156	.132	.113	.134	.114	.097	.092	.079	.068	.053	.046	.040	.017	.015	.013	
3.0	.143	.114	.090	.123	.098	.078	.084	.068	.055	.049	.040	.032	.016	.013	.011	
4.0	.133	.099	.073	.114	.085	.063	.078	.059	.045	.045	.035	.026	.015	.011	.009	
5.0	.124	.087	.060	.106	.075	.052	.073	.053	.037	.042	.031	.022	.014	.010	.007	
6.0	.116	.078	.050	.099	.067	.044	.069	.047	.031	.040	.028	.018	.013	.009	.006	
7.0	.109	.070	.043	.094	.061	.037	.065	.043	.026	.038	.025	.016	.012	.008	.005	
8.0	.103	.064	.037	.088	.055	.032	.061	.039	.023	.036	.023	.014	.012	.007	.004	
9.0	.097	.058	.032	.084	.051	.028	.058	.036	.020	.034	.021	.012	.011	.007	.004	
10.0	.092	.054	.028	.080	.047	.025	.055	.033	.017	.032	.019	.010	.010	.006	.003	

C Range: 0 - 360DEG  
 C Interval: 15.0DEG  
 Test Speed: HIGH  
 Temperature:25.3DEG  
 Operators:Jason  
 Test Date:2021-11-09

γ Range: 0 - 90DEG  
 γ Interval: 0.5DEG  
 Test System:EVERFINE GO-2000B\_V1 SYSTEM V2.0.362  
 Humidity:58%  
 Test Distance:8.967m [K=1.0000]  
 Remarks:

UGR(Unified Glare Rating) Table

Test:U:29.50V I:0.3500A P:10.32W PF:1.000 Freq:0Hz Lamp Flux:783.525x1 lm		
NAME: M3-11W-927-35	TYPE:Downlight	SERIAL No.:
SPEC.:2700K	DIM.: φ50mm*H40mm	
MFR.: NEKO LIGHTING AG		

ceiling/cavity	0.7	0.7	0.5	0.5	0.3	0.7	0.7	0.5	0.5	0.3
walls	0.5	0.3	0.5	0.3	0.3	0.5	0.3	0.5	0.3	0.3
working plane	0.2	0.2	0.2	0.2	0.2	0.2	0.2	0.2	0.2	0.2
Room dimensions	Viewed crosswise					Viewed endwise				
x = 2H y = 2H	21.2	22.1	21.5	22.3	22.5	21.2	22.1	21.4	22.3	22.4
3H	21.8	22.7	22.1	22.9	23.1	21.8	22.7	22.1	22.9	23.1
4H	22.0	22.8	22.3	23.0	23.3	22.0	22.8	22.3	23.1	23.3
6H	22.1	22.9	22.4	23.1	23.4	22.2	22.9	22.5	23.2	23.4
8H	22.1	22.9	22.4	23.1	23.4	22.2	22.9	22.5	23.2	23.4
12H	22.1	22.8	22.4	23.1	23.4	22.1	22.8	22.5	23.1	23.4
4H 2H	21.5	22.3	21.7	22.5	22.7	21.4	22.2	21.7	22.4	22.7
3H	22.2	22.9	22.5	23.2	23.4	22.2	22.9	22.5	23.2	23.4
4H	22.5	23.1	22.8	23.4	23.7	22.5	23.1	22.9	23.4	23.7
6H	22.7	23.2	23.0	23.6	23.9	22.7	23.3	23.1	23.6	24.0
8H	22.7	23.2	23.1	23.6	23.9	22.7	23.3	23.1	23.6	24.0
12H	22.7	23.1	23.1	23.5	23.9	22.7	23.2	23.1	23.6	24.0
8H 4H	22.5	23.1	22.9	23.4	23.8	22.6	23.1	23.0	23.4	23.8
6H	22.8	23.2	23.2	23.6	24.0	22.8	23.3	23.3	23.7	24.1
8H	22.8	23.2	23.3	23.6	24.1	22.9	23.3	23.3	23.7	24.1
12H	22.8	23.1	23.3	23.6	24.1	22.9	23.2	23.3	23.6	24.1
12H 4H	22.5	23.0	22.9	23.4	23.7	22.5	23.0	22.9	23.4	23.8
6H	22.8	23.1	23.2	23.6	24.0	22.8	23.2	23.3	23.6	24.0
8H	22.8	23.1	23.3	23.6	24.1	22.9	23.2	23.3	23.6	24.1
Variations with the observer position at spacings:										
S = 1.0H	+ 0.7 / - 1.0					+ 0.7 / - 0.9				
1.5H	+ 1.3 / - 0.6					+ 1.3 / - 0.6				
2.0H	+ 1.0 / - 0.6					+ 1.0 / - 0.6				

CIE Pub.117, 783.5 lm Total Lamp Luminous Flux Correct (8log(F/F0) = -0.8)

C Range: 0 - 360DEG  
 C Interval: 15.0DEG  
 Test Speed: HIGH  
 Temperature:25.3DEG  
 Operators:Jason  
 Test Date:2021-11-09

γ Range: 0 - 90DEG  
 γ Interval: 0.5DEG  
 Test System:EVERFINE GO-2000B\_V1 SYSTEM V2.0.362  
 Humidity:58%  
 Test Distance:8.967m [K=1.0000]  
 Remarks:

UTILIZATION FACTORS TABLE

Test:U:29.50V I:0.3500A P:10.32W PF:1.000 Freq:0Hz Lamp Flux:783.525x1 lm		
NAME: M3-11W-927-35	TYPE:Downlight	SERIAL No.:
SPEC.:2700K	DIM.: φ50mm*H40mm	
MFR.: NEKO LIGHTING AG		

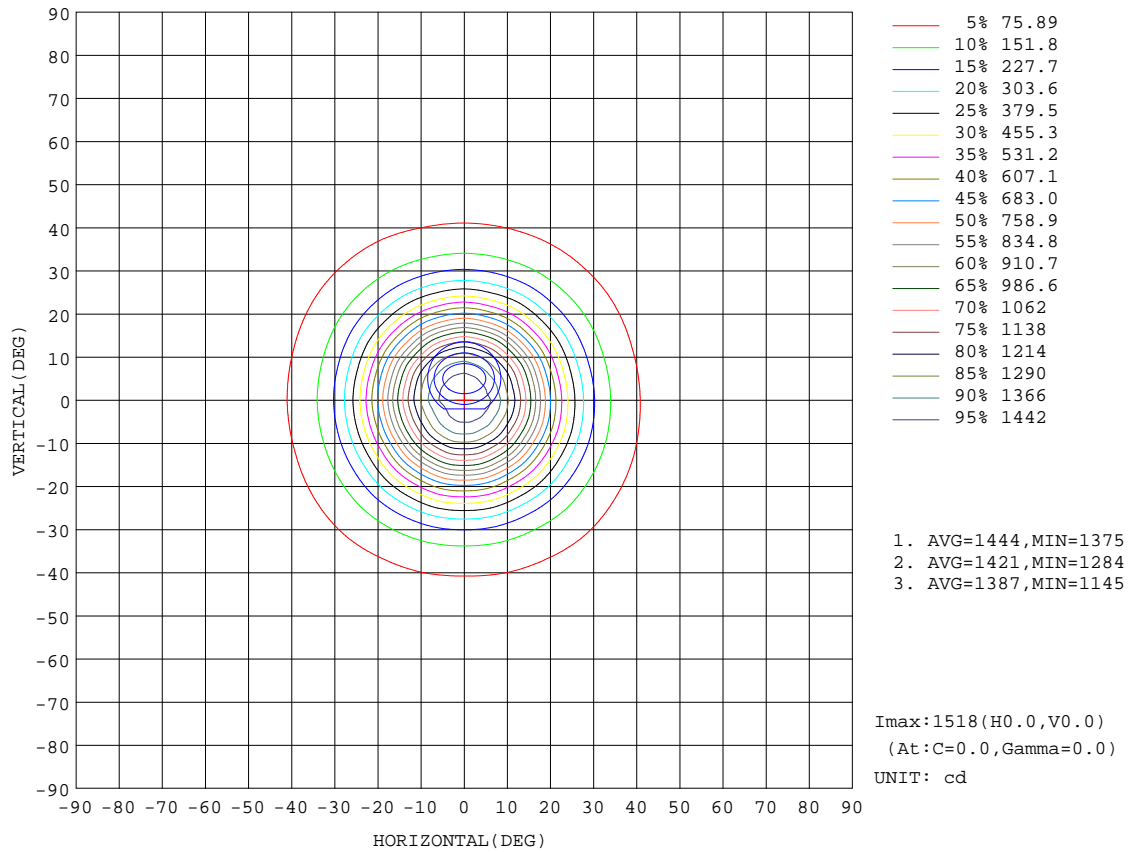
REFLECTANCE										
Ceiling	0.8	0.8	0.8	0.7	0.7	0.7	0.5	0.5	0.5	0
Walls	0.7	0.5	0.3	0.7	0.5	0.3	0.7	0.5	0.3	0
Working plane	0.2	0.2	0.2	0.2	0.2	0.2	0.2	0.2	0.2	0
ROOM INDEX	UTILIZATION FACTORS(PERCENT) $k(RI) \times RCR = 5$									
k = 0.60	84	77	73	83	77	73	83	76	73	69
0.80	92	85	81	91	85	81	90	84	80	76
1.00	97	90	86	96	90	86	94	90	85	81
1.25	101	95	91	100	95	91	98	93	90	86
1.50	104	99	95	103	98	94	100	96	93	88
2.00	107	102	99	106	101	98	103	99	97	91
2.50	109	105	101	107	103	100	104	101	99	92
3.00	111	107	104	109	105	103	105	103	101	94
4.00	113	110	107	111	108	106	107	105	103	96
5.00	114	112	110	112	110	108	108	107	105	97
ROOM INDEX	UF(total)									Direct
According to DIN EN 13032-2 2004			Suspended				SHRNOM = 1.25			

C Range: 0 - 360DEG  
 C Interval: 15.0DEG  
 Test Speed: HIGH  
 Temperature:25.3DEG  
 Operators:Jason  
 Test Date:2021-11-09

γ Range: 0 - 90DEG  
 γ Interval: 0.5DEG  
 Test System:EVERFINE GO-2000B\_V1 SYSTEM V2.0.362  
 Humidity:58%  
 Test Distance:8.967m [K=1.0000]  
 Remarks:

**ISOCANDELA DIAGRAM**

Test:U:29.50V I:0.3500A P:10.32W PF:1.000 Freq:0Hz Lamp Flux:783.525x1 lm		
NAME: M3-11W-927-35	TYPE:Downlight	SERIAL No.:
SPEC.:2700K	DIM.: φ50mm*H40mm	
MFR.: NEKO LIGHTING AG		



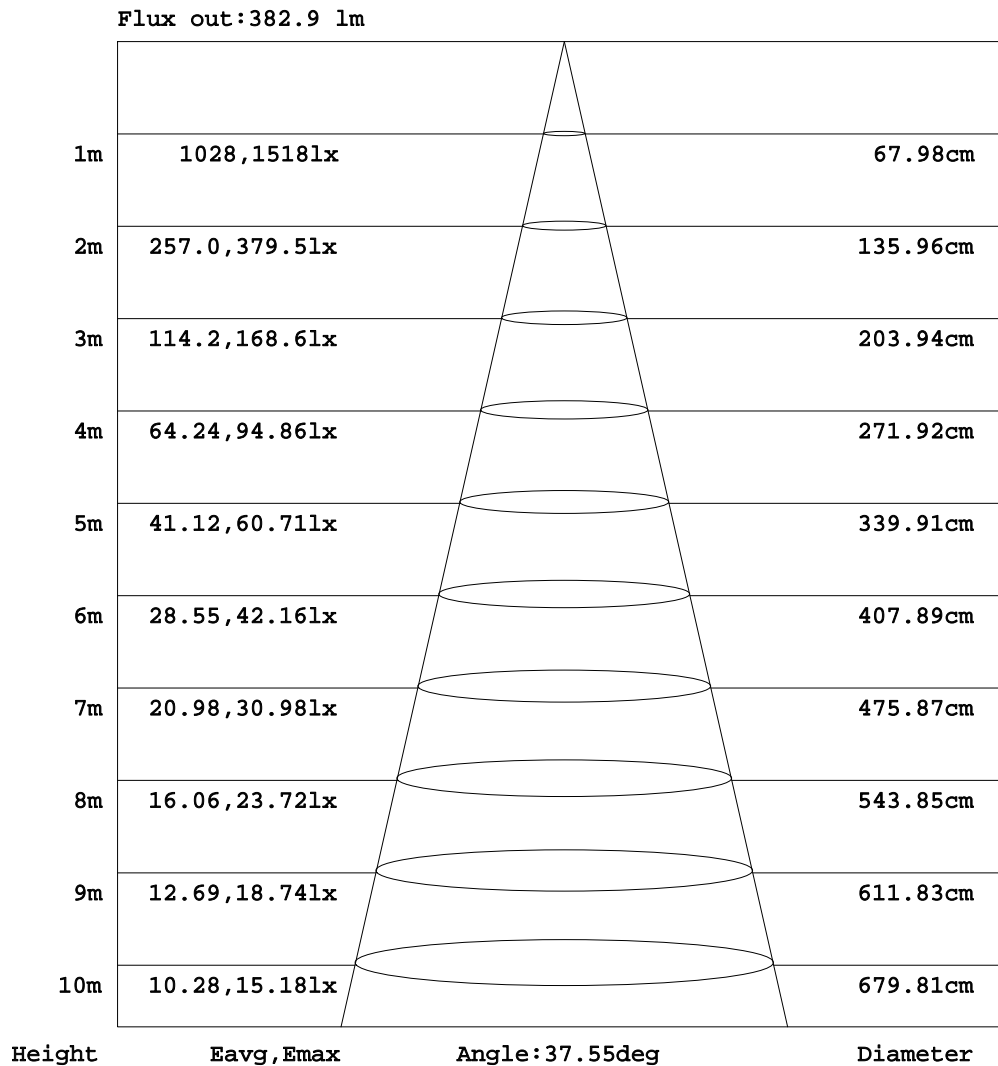
C Range: 0 - 360DEG  
 C Interval: 15.0DEG  
 Test Speed: HIGH  
 Temperature:25.3DEG  
 Operators:Jason  
 Test Date:2021-11-09

γ Range: 0 - 90DEG  
 γ Interval: 0.5DEG  
 Test System:EVERFINE GO-2000B\_V1 SYSTEM V2.0.362  
 Humidity:58%  
 Test Distance:8.967m [K=1.0000]  
 Remarks:



**AAI Figure**

Test:U:29.50V I:0.3500A P:10.32W PF:1.000 Freq:0Hz Lamp Flux:783.525x1 lm		
NAME: M3-11W-927-35	TYPE:Downlight	SERIAL No.:
SPEC.:2700K	DIM.: φ50mm*H40mm	
MFR.: NEKO LIGHTING AG		



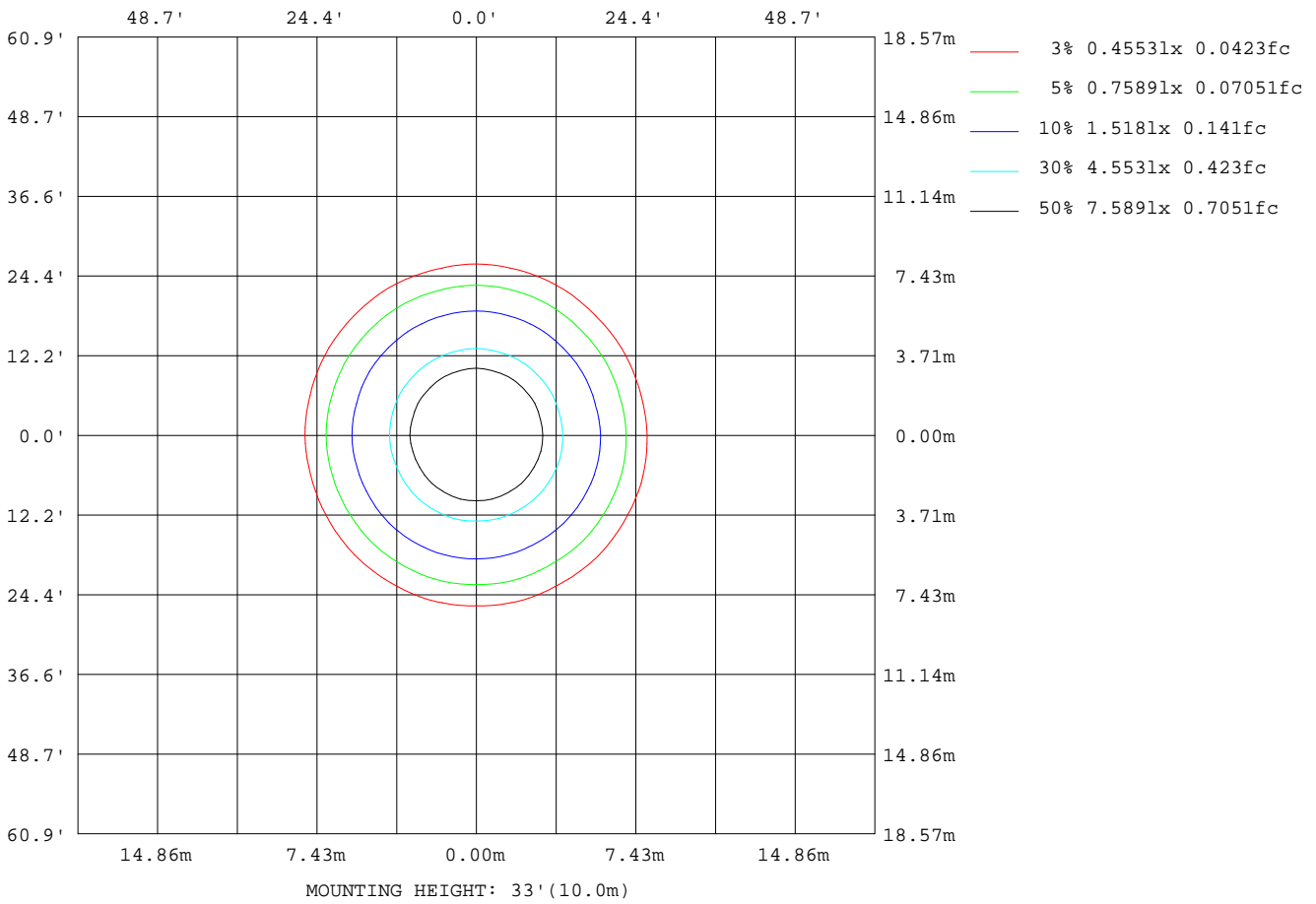
Note:The Curves indicate the illuminated area and the average illumination when the luminaire is at different distance.

C Range: 0 - 360DEG  
C Interval: 15.0DEG  
Test Speed: HIGH  
Temperature:25.3DEG  
Operators:Jason  
Test Date:2021-11-09

γ Range: 0 - 90DEG  
γ Interval: 0.5DEG  
Test System:EVERFINE GO-2000B\_V1 SYSTEM V2.0.362  
Humidity:58%  
Test Distance:8.967m [K=1.0000]  
Remarks:

**ISOLUX DIAGRAM**

Test:U:29.50V I:0.3500A P:10.32W PF:1.000 Freq:0Hz Lamp Flux:783.525x1 lm		
NAME: M3-11W-927-35	TYPE:Downlight	SERIAL No.:
SPEC.:2700K	DIM.: φ50mm*H40mm	
MFR.: NEKO LIGHTING AG		



C Range: 0 - 360DEG  
 C Interval: 15.0DEG  
 Test Speed: HIGH  
 Temperature:25.3DEG  
 Operators:Jason  
 Test Date:2021-11-09

γ Range: 0 - 90DEG  
 γ Interval: 0.5DEG  
 Test System:EVERFINE GO-2000B\_V1 SYSTEM V2.0.362  
 Humidity:58%  
 Test Distance:8.967m [K=1.0000]  
 Remarks:

LED Avg.L Report

Test:U:29.50V I:0.3500A P:10.32W PF:1.000 Freq:0Hz Lamp Flux:783.525x1 lm		
NAME: M3-11W-927-35	TYPE:Downlight	SERIAL No.:
SPEC.:2700K	DIM.: φ50mm*H40mm	
MFR.: NEKO LIGHTING AG		

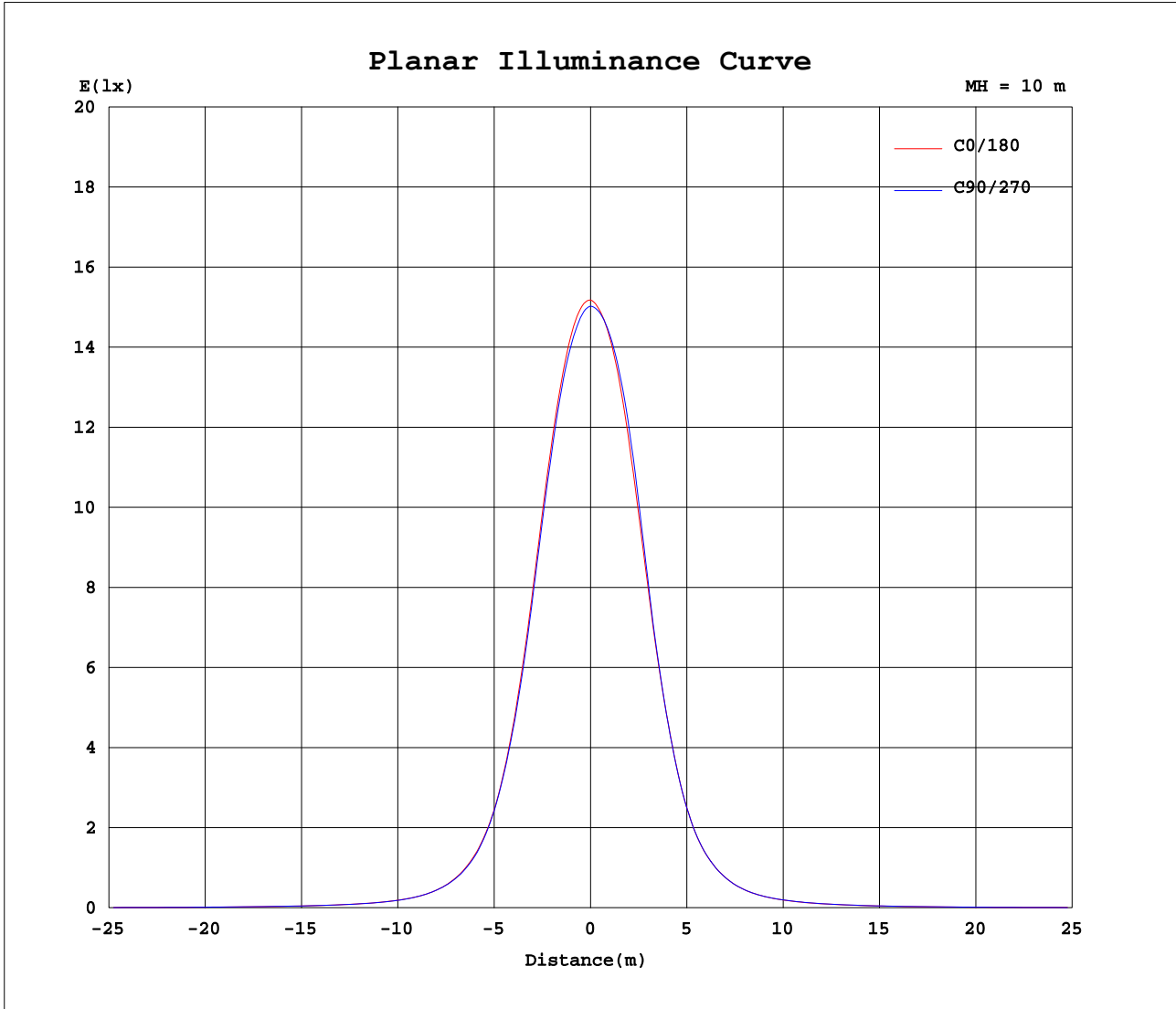
AvgL	cd/m2
L_0~180 (65) av	20558
L_0~180 (75) av	14612
L_0~180 (85) av	6338
L_90~270 (65) av	20857
L_90~270 (75) av	14525
L_90~270 (85) av	5899
L_45 (65) av	20377
L_45 (75) av	14258
L_45 (85) av	5966

Standard: GB/T 29293-2012

C Range: 0 - 360DEG  
C Interval: 15.0DEG  
Test Speed: HIGH  
Temperature:25.3DEG  
Operators:Jason  
Test Date:2021-11-09

γ Range: 0 - 90DEG  
γ Interval: 0.5DEG  
Test System:EVERFINE GO-2000B\_V1 SYSTEM V2.0.362  
Humidity:58%  
Test Distance:8.967m [K=1.0000]  
Remarks:

Planar Illuminance Curve



C Range: 0 - 360DEG  
 C Interval: 15.0DEG  
 Test Speed: HIGH  
 Temperature: 25.3DEG  
 Operators: Jason  
 Test Date: 2021-11-09

$\gamma$  Range: 0 - 90DEG  
 $\gamma$  Interval: 0.5DEG  
 Test System: EVERFINE GO-2000B\_V1 SYSTEM V2.0.362  
 Humidity: 58%  
 Test Distance: 8.967m [K=1.0000]  
 Remarks:

LUMINOUS DISTRIBUTION INTENSITY DATA

Test:U:29.50V I:0.3500A P:10.32W PF:1.000 Freq:0Hz Lamp Flux:783.525x1 lm		
NAME: M3-11W-927-35	TYPE:Downlight	SERIAL No.:
SPEC.:2700K	DIM.: φ50mm*H40mm	
MFR.: NEKO LIGHTING AG		

Table--1

UNIT: cd

C (DEG) \ γ (DEG)	0	15	30	45	60	75	90	105	120	135	150	165	180	195	210	225	240	255	270
0	1518	1513	1510	1507	1505	1503	1503	1503	1502	1500	1498	1498	1518	1513	1510	1507	1505	1503	1503
5	1469	1463	1455	1454	1447	1447	1444	1446	1443	1441	1436	1439	1461	1460	1462	1460	1463	1463	1465
10	1300	1296	1283	1285	1277	1281	1277	1284	1279	1278	1271	1276	1298	1298	1313	1314	1326	1325	1330
15	1016	1016	1001	1005	994	1000	995	1003	994	997	989	997	1016	1010	1025	1022	1038	1035	1045
20	683	688	678	679	669	673	667	675	669	674	666	673	691	687	694	686	695	688	695
25	409	416	410	412	404	409	404	411	405	408	401	408	416	410	419	413	415	410	415
30	234	236	233	233	229	230	229	231	231	233	229	231	235	234	238	235	237	235	236
35	136	137	135	137	133	135	133	136	134	135	134	135	138	136	138	136	138	136	137
40	81.8	83.5	82.5	83.3	81.9	82.9	81.5	82.7	81.2	81.9	81.3	81.1	83.4	83.1	83.8	83.5	84.3	82.6	83.6
45	53.9	54.5	53.8	54.2	53.4	54.1	53.1	54.0	53.2	54.2	53.5	53.3	55.5	55.2	55.6	55.9	56.7	56.0	56.3
50	39.1	39.2	38.5	38.4	38.4	38.7	38.7	39.5	38.8	39.4	38.7	38.2	39.8	39.9	40.0	40.1	40.8	41.0	40.9
55	30.1	30.0	29.4	29.3	29.4	29.9	30.2	30.6	29.9	30.0	29.3	28.9	29.9	29.9	30.2	30.2	30.7	30.7	30.7
60	23.2	23.4	22.9	22.9	23.2	23.7	23.8	23.9	23.1	22.8	22.4	21.9	22.5	22.6	22.7	22.5	23.1	23.4	23.7
65	17.1	17.0	17.0	17.0	16.8	17.2	17.3	17.6	17.2	17.1	16.9	16.8	17.0	16.9	17.1	17.3	17.7	17.3	17.3
70	11.2	11.2	11.1	11.0	11.3	11.4	11.4	11.7	11.6	11.6	11.6	11.7	12.1	11.9	12.1	11.9	11.9	11.6	11.5
75	7.15	7.22	7.12	7.17	7.27	7.49	7.44	7.66	7.47	7.48	7.30	7.37	7.70	7.61	7.71	7.51	7.48	7.35	7.32
80	3.70	3.74	3.67	3.72	3.73	3.93	3.96	3.99	3.93	3.96	3.89	3.93	4.16	4.07	4.11	4.01	3.99	3.90	3.87
85	0.85	0.80	0.75	0.70	0.71	0.72	0.77	0.82	0.87	0.94	1.04	1.14	1.32	1.35	1.35	1.33	1.23	1.28	1.25
90	0.05	0.05	0.06	0.05	0.05	0.05	0.05	0.05	0.05	0.05	0.05	0.05	0.08	0.09	0.09	0.09	0.08	0.09	0.09

C Range: 0 - 360DEG  
 C Interval: 15.0DEG  
 Test Speed: HIGH  
 Temperature: 25.3DEG  
 Operators: Jason  
 Test Date: 2021-11-09

γ Range: 0 - 90DEG  
 γ Interval: 0.5DEG  
 Test System: EVERFINE GO-2000B\_V1 SYSTEM V2.0.362  
 Humidity: 58%  
 Test Distance: 8.967m [K=1.0000]  
 Remarks:

LUMINOUS DISTRIBUTION INTENSITY DATA

Test:U:29.50V I:0.3500A P:10.32W PF:1.000 Freq:0Hz Lamp Flux:783.525x1 lm		
NAME: M3-11W-927-35	TYPE:Downlight	SERIAL No.:
SPEC.:2700K	DIM.: φ50mm*H40mm	
MFR.: NEKO LIGHTING AG		

Table--2

UNIT: cd

C (DEG) γ (DEG)	285	300	315	330	345												
0	1503	1502	1500	1498	1498												
5	1461	1459	1454	1456	1453												
10	1317	1312	1300	1301	1291												
15	1034	1037	1025	1026	1013												
20	684	689	681	683	675												
25	406	413	402	406	400												
30	233	233	228	228	226												
35	135	134	131	132	132												
40	82.4	81.0	78.9	79.4	79.3												
45	55.4	54.4	52.8	52.9	52.1												
50	40.0	39.6	38.3	37.9	37.5												
55	30.3	30.1	29.1	28.8	28.5												
60	23.4	23.2	22.2	21.9	21.8												
65	16.9	16.8	16.3	16.2	16.2												
70	11.1	11.0	10.8	10.9	10.9												
75	7.06	6.97	6.80	7.05	7.03												
80	3.71	3.67	3.60	3.71	3.73												
85	1.22	1.17	1.11	1.04	0.96												
90	0.09	0.08	0.08	0.08	0.08												

C Range: 0 - 360DEG	γ Range: 0 - 90DEG
C Interval: 15.0DEG	γ Interval: 0.5DEG
Test Speed: HIGH	Test System:EVERFINE GO-2000B_V1 SYSTEM V2.0.362
Temperature:25.3DEG	Humidity:58%
Operators:Jason	Test Distance:8.967m [K=1.0000]
Test Date:2021-11-09	Remarks: