

LED Linear Light FL600-GL600-16W-840



Light Output Ratio:	100.0%	
Luminaire Power:	15.57 W	
SHR Nominal:	1.25	Calculated using the TM5
SHR Maximum:	1.35	fine grid method.

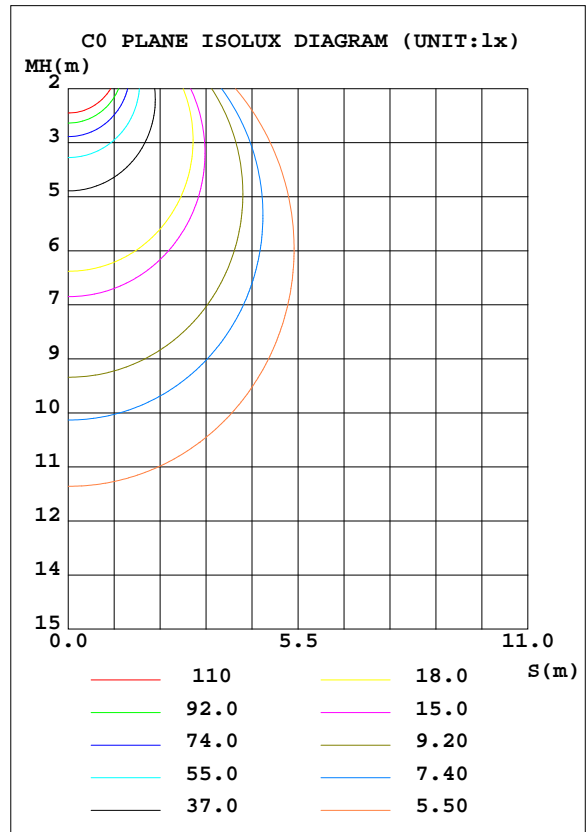
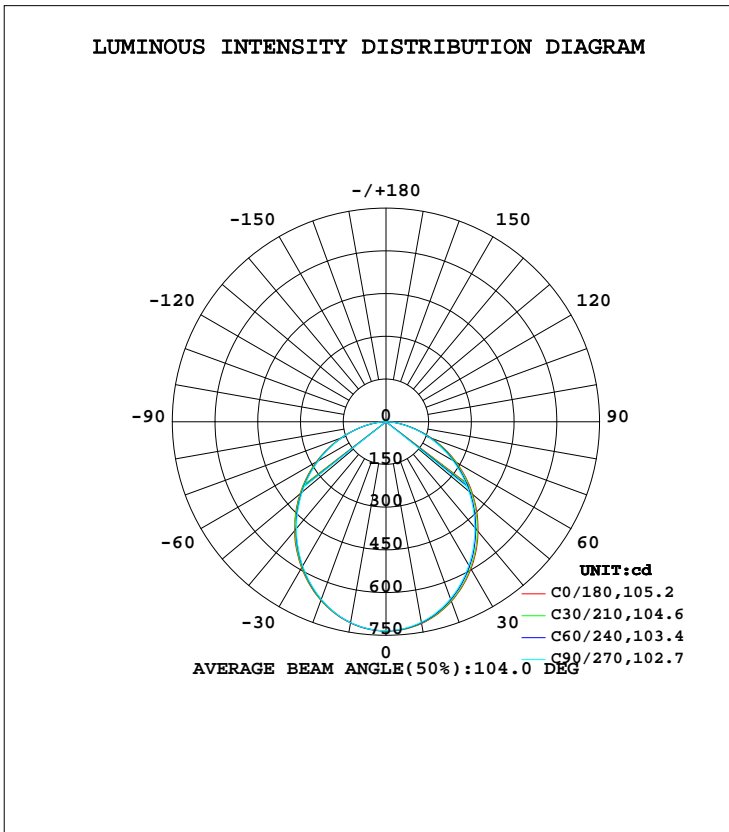
C Range: 0 - 360DEG  
C Interval: 15.0DEG  
Test Speed: HIGH  
Temperature: 25.3DEG  
Operators: Meng yongjian  
Test Date: 2018-04-08

$\gamma$  Range: 0 - 90DEG  
 $\gamma$  Interval: 1.0DEG  
Test System: EVERFINE GO-2000B\_V1 SYSTEM V2.0.288  
Humidity: 52%  
Test Distance: 5.850m [K=1.0000]  
Remarks:

LUMINAIRE PHOTOMETRIC TEST REPORT

Test:U:44.50V I:0.3500A P:15.57W PF:1.000 Freq:0Hz Lamp Flux:1904.49x1 lm		
NAME: FL600-GL600-16W-840	TYPE:Linear Light	SERIAL No.:
SPEC.:4000K	DIM.: L600mm*W50mm*H80mm	
MFR.: NEKO LIGHTING AG		

DATA OF LAMP		PHOTOMETRIC DATA Eff: 122.28 lm/W			
MODEL	SAMSUNG-4000K	I <sub>max</sub> (cd)	735.5	S/MH(C0/180)	1.20
NOMINAL POWER(W)	16	LOR(%)	100.0	S/MH(C90/270)	1.19
RATED VOLTAGE(V)	48	TOTAL FLUX(lm)	1904.5	η UP, DN(C0-180)	0.0,49.8
NOMINAL FLUX(lm)	1904.49	CIE CLASS	DIRECT	η UP, DN(C180-360)	0.0,50.2
LAMPS INSIDE	1	η up(%)	0.0	CIBSE SHR NOM	1.25
TEST VOLTAGE(V)	44.5	η down(%)	100.0	CIBSE SHR MAX	1.35



C Range: 0 - 360DEG  
 C Interval: 15.0DEG  
 Test Speed: HIGH  
 Temperature:25.3DEG  
 Operators:Meng yongjian  
 Test Date:2018-04-08

γ Range: 0 - 90DEG  
 γ Interval: 1.0DEG  
 Test System:EVERFINE GO-2000B\_V1 SYSTEM V2.0.288  
 Humidity:52%  
 Test Distance:5.850m [K=1.0000]  
 Remarks:

**ZONAL FLUX DIAGRAM**

ZONAL FLUX DIAGRAM:

$\gamma$	C0	C45	C90	C135	C180	C225	C270	C315	$\gamma$	$\Phi$ zone	$\Phi$ total	%lum, lamp
10	719.5	717.6	714.7	714.5	717.6	716.1	716.1	717.2	0- 10	69.23	69.23	3.63,3.63
20	671.2	667.5	661.5	662.7	667.9	664.8	663.9	667.4	10- 20	195.8	265.1	13.9,13.9
30	596.6	590.8	581.9	585.1	592.5	587.4	585.2	590.9	20- 30	290.0	555.1	29.1,29.1
40	503.0	495.8	485.2	489.9	499.1	492.6	489.1	496.4	30- 40	339.5	894.6	47,47
50	397.8	390.4	379.4	384.8	394.3	387.9	383.9	391.3	40- 50	341.1	1236	64.9,64.9
60	286.0	279.5	269.6	274.4	283.1	277.3	274.6	280.6	50- 60	298.4	1534	80.6,80.6
70	171.8	167.9	160.9	163.7	169.3	166.4	166.0	169.4	60- 70	219.9	1754	92.1,92.1
80	65.55	65.59	63.13	63.14	64.00	65.83	67.53	67.81	70- 80	120.7	1875	98.4,98.4
90	0.3892	0.3957	0.4001	0.7959	1.113	0.9052	0.8374	0.5510	80- 90	29.77	1904	100,100
100									90-100			
110									100-110			
120									110-120			
130									120-130			
140									130-140			
150									140-150			
160									150-160			
170									160-170			
180									170-180			
DEG	LUMINOUS INTENSITY:cd									UNIT:lm		

Conical surface Flux(90deg): 1067.9 lm

%lum = 56.1%  
%lamp = 56.1%

Conical surface Flux(120deg): 1534.1 lm

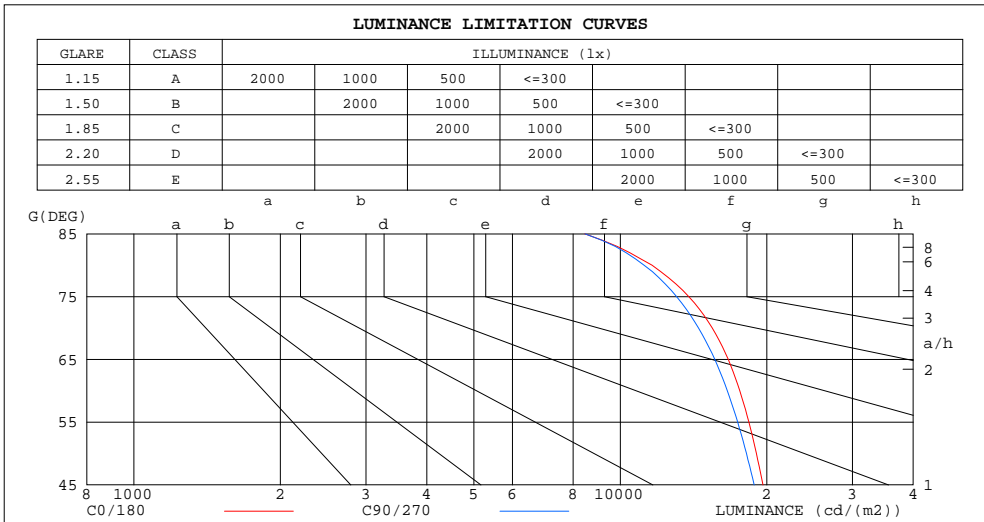
%lum = 80.6%  
%lamp = 80.6%

C Range: 0 - 360DEG  
C Interval: 15.0DEG  
Test Speed: HIGH  
Temperature:25.3DEG  
Operators:Meng yongjian  
Test Date:2018-04-08

$\gamma$  Range: 0 - 90DEG  
 $\gamma$  Interval: 1.0DEG  
Test System:EVERFINE GO-2000B\_V1 SYSTEM V2.0.288  
Humidity:52%  
Test Distance:5.850m [K=1.0000]  
Remarks:

**LUMINANCE LIMITATION CURVES**

Test:U:44.50V I:0.3500A P:15.57W PF:1.000 Freq:0Hz Lamp Flux:1904.49x1 lm		
NAME: FL600-GL600-16W-840	TYPE:Linear Light	SERIAL No.:
SPEC.:4000K	DIM.: L600mm*W50mm*H80mm	
MFR.: NEKO LIGHTING AG		



LUMINANCE cd/(m2)		
G( DEG)	C0/180	C90/270
85	8450	8460
80	11616	11185
75	13826	13043
70	15452	14475
65	16668	15637
60	17598	16593
55	18375	17422
50	19044	18164
45	19646	18845

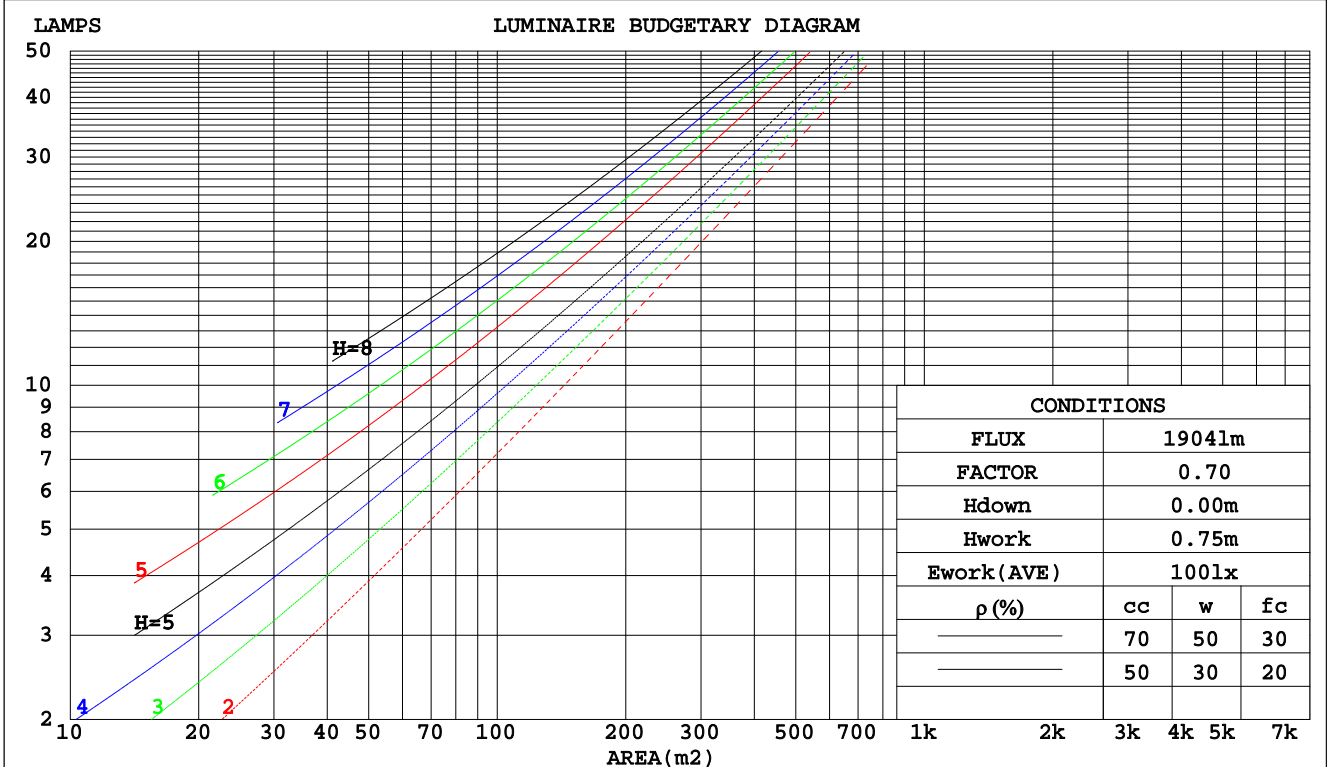
C Range: 0 - 360DEG  
 C Interval: 15.0DEG  
 Test Speed: HIGH  
 Temperature:25.3DEG  
 Operators:Meng yongjian  
 Test Date:2018-04-08

$\gamma$  Range: 0 - 90DEG  
 $\gamma$  Interval: 1.0DEG  
 Test System:EVERFINE GO-2000B\_V1 SYSTEM V2.0.288  
 Humidity:52%  
 Test Distance:5.850m [K=1.0000]  
 Remarks:

**CU AND LUMINAIRE BUDGETARY ESTIMATE DIAGRAM**

Test:U:44.50V I:0.3500A P:15.57W PF:1.000 Freq:0Hz Lamp Flux:1904.49x1 lm		
NAME: FL600-GL600-16W-840	TYPE:Linear Light	SERIAL No.:
SPEC.:4000K	DIM.: L600mm*W50mm*H80mm	
MFR.: NEKO LIGHTING AG		

pcc	80%			70%			50%			30%			10%			0
	50%	30%	10%	50%	30%	10%	50%	30%	10%	50%	30%	10%	50%	30%	10%	0
pw																0
pfc	20%			20%			20%			20%			20%			0
RCR	RCR:Room Cavity Ratio      Coefficients of Utilization(CU)															
0.0	1.19	1.19	1.19	1.16	1.16	1.16	1.11	1.11	1.11	1.06	1.06	1.06	1.02	1.02	1.02	.00
1.0	1.04	1.00	.96	1.02	.98	.95	.98	.95	.92	.94	.91	.89	.90	.88	.86	.84
2.0	.91	.85	.79	.89	.83	.78	.86	.81	.76	.83	.78	.75	.80	.76	.73	.71
3.0	.80	.72	.66	.79	.71	.65	.76	.69	.64	.73	.68	.63	.71	.66	.62	.60
4.0	.71	.63	.56	.70	.62	.56	.68	.61	.55	.65	.59	.54	.63	.58	.53	.51
5.0	.64	.55	.49	.63	.54	.48	.61	.53	.48	.59	.52	.47	.57	.51	.47	.45
6.0	.58	.49	.42	.57	.48	.42	.55	.47	.42	.53	.47	.42	.52	.46	.41	.39
7.0	.52	.44	.38	.52	.43	.37	.50	.43	.37	.49	.42	.37	.47	.41	.37	.35
8.0	.48	.39	.34	.47	.39	.34	.46	.39	.33	.45	.38	.33	.43	.37	.33	.31
9.0	.44	.36	.30	.43	.36	.30	.42	.35	.30	.41	.35	.30	.40	.34	.30	.28
10.0	.41	.33	.28	.40	.33	.27	.39	.32	.27	.38	.32	.27	.37	.31	.27	.25



C Range: 0 - 360DEG  
 C Interval: 15.0DEG  
 Test Speed: HIGH  
 Temperature: 25.3DEG  
 Operators: Meng yongjian  
 Test Date: 2018-04-08

γ Range: 0 - 90DEG  
 γ Interval: 1.0DEG  
 Test System: EVERFINE GO-2000B\_V1 SYSTEM V2.0.288  
 Humidity: 52%  
 Test Distance: 5.850m [K=1.0000]  
 Remarks:

WEC AND CCEC

Test:U:44.50V I:0.3500A P:15.57W PF:1.000 Freq:0Hz Lamp Flux:1904.49x1 lm		
NAME: FL600-GL600-16W-840	TYPE:Linear Light	SERIAL No.:
SPEC.:4000K	DIM.: L600mm*W50mm*H80mm	
MFR.: NEKO LIGHTING AG		

ρcc	80%			70%			50%			30%			10%			0
ρw	50%	30%	10%	50%	30%	10%	50%	30%	10%	50%	30%	10%	50%	30%	10%	0
ρfc	20%			20%			20%			20%			20%			0
RCR	RCR:Room Cavity Ratio						Wall Exitance Coefficients(WEC)									
0.0																
1.0	.299	.170	.054	.292	.167	.053	.279	.160	.051	.267	.154	.049	.256	.148	.048	
2.0	.283	.155	.048	.277	.153	.047	.266	.148	.046	.255	.143	.045	.245	.139	.044	
3.0	.263	.140	.042	.258	.138	.042	.248	.134	.041	.238	.130	.040	.229	.127	.039	
4.0	.244	.127	.037	.239	.125	.037	.230	.122	.036	.221	.119	.036	.213	.116	.035	
5.0	.226	.115	.033	.222	.114	.033	.213	.111	.033	.206	.109	.032	.199	.106	.032	
6.0	.210	.105	.030	.206	.104	.030	.199	.102	.030	.192	.100	.029	.186	.098	.029	
7.0	.196	.097	.027	.192	.096	.027	.186	.094	.027	.180	.092	.027	.174	.090	.027	
8.0	.183	.089	.025	.180	.089	.025	.174	.087	.025	.169	.085	.025	.164	.084	.024	
9.0	.172	.083	.023	.169	.082	.023	.164	.081	.023	.159	.080	.023	.154	.078	.023	
10.0	.162	.077	.021	.159	.077	.021	.154	.076	.021	.150	.074	.021	.146	.073	.021	

ρcc	80%			70%			50%			30%			10%			0
ρw	50%	30%	10%	50%	30%	10%	50%	30%	10%	50%	30%	10%	50%	30%	10%	0
ρfc	20%			20%			20%			20%			20%			0
RCR	RCR:Room Cavity Ratio						Ceiling Cavity Exitance Coefficients(CCEC)									
0.0	.190	.190	.190	.163	.163	.163	.111	.111	.111	.064	.064	.064	.020	.020	.020	
1.0	.180	.156	.135	.154	.134	.116	.105	.092	.080	.060	.053	.047	.019	.017	.015	
2.0	.171	.132	.099	.147	.114	.086	.100	.079	.060	.058	.046	.035	.019	.015	.011	
3.0	.163	.114	.075	.140	.099	.065	.096	.068	.046	.055	.040	.027	.018	.013	.009	
4.0	.156	.101	.059	.133	.087	.051	.092	.061	.036	.053	.036	.021	.017	.012	.007	
5.0	.148	.090	.048	.127	.078	.042	.088	.055	.029	.051	.032	.017	.016	.010	.006	
6.0	.141	.082	.040	.121	.071	.035	.084	.050	.024	.048	.029	.015	.016	.010	.005	
7.0	.134	.075	.034	.115	.065	.029	.080	.046	.021	.046	.027	.012	.015	.009	.004	
8.0	.128	.069	.029	.110	.060	.025	.076	.042	.018	.044	.025	.011	.014	.008	.004	
9.0	.122	.064	.025	.105	.056	.022	.073	.039	.016	.042	.023	.009	.014	.008	.003	
10.0	.116	.060	.023	.100	.052	.020	.069	.037	.014	.041	.022	.008	.013	.007	.003	

C Range: 0 - 360DEG  
 C Interval: 15.0DEG  
 Test Speed: HIGH  
 Temperature:25.3DEG  
 Operators:Meng yongjian  
 Test Date:2018-04-08

γ Range: 0 - 90DEG  
 γ Interval: 1.0DEG  
 Test System:EVERFINE GO-2000B\_V1 SYSTEM V2.0.288  
 Humidity:52%  
 Test Distance:5.850m [K=1.0000]  
 Remarks:

UGR(Unified Glare Rating) Table

Test:U:44.50V I:0.3500A P:15.57W PF:1.000 Freq:0Hz Lamp Flux:1904.49x1 lm		
NAME: FL600-GL600-16W-840	TYPE:Linear Light	SERIAL No.:
SPEC.:4000K	DIM.: L600mm*W50mm*H80mm	
MFR.: NEKO LIGHTING AG		

ceiling/cavity	0.7	0.7	0.5	0.5	0.3	0.7	0.7	0.5	0.5	0.3
walls	0.5	0.3	0.5	0.3	0.3	0.5	0.3	0.5	0.3	0.3
working plane	0.2	0.2	0.2	0.2	0.2	0.2	0.2	0.2	0.2	0.2
Room dimensions	Viewed crosswise					Viewed endwise				
x = 2H y = 2H	20.7	22.2	21.0	22.4	22.6	20.4	21.9	20.7	22.1	22.3
3H	22.1	23.5	22.4	23.7	24.0	21.8	23.2	22.1	23.4	23.7
4H	22.7	24.0	23.0	24.2	24.5	22.3	23.6	22.6	23.9	24.2
6H	23.0	24.2	23.3	24.5	24.8	22.7	23.9	23.0	24.2	24.5
8H	23.1	24.3	23.4	24.6	24.8	22.8	24.0	23.1	24.3	24.5
12H	23.1	24.3	23.5	24.6	24.9	22.8	24.0	23.2	24.3	24.6
4H 2H	21.2	22.6	21.6	22.8	23.1	21.0	22.4	21.4	22.6	22.9
3H	22.8	24.0	23.2	24.3	24.6	22.6	23.7	22.9	24.0	24.3
4H	23.5	24.5	23.9	24.9	25.2	23.2	24.3	23.6	24.6	24.9
6H	24.0	24.9	24.4	25.2	25.6	23.7	24.6	24.1	25.0	25.3
8H	24.1	25.0	24.5	25.3	25.7	23.8	24.7	24.3	25.1	25.5
12H	24.2	25.0	24.6	25.3	25.7	23.9	24.7	24.3	25.1	25.5
8H 4H	23.7	24.6	24.1	24.9	25.3	23.5	24.3	23.9	24.7	25.1
6H	24.3	25.0	24.7	25.4	25.8	24.1	24.8	24.5	25.2	25.6
8H	24.5	25.1	25.0	25.6	26.0	24.3	24.9	24.7	25.3	25.8
12H	24.6	25.2	25.1	25.6	26.1	24.4	25.0	24.9	25.4	25.9
12H 4H	23.7	24.5	24.1	24.9	25.3	23.5	24.3	23.9	24.7	25.1
6H	24.3	25.0	24.8	25.4	25.9	24.1	24.8	24.6	25.2	25.6
8H	24.6	25.1	25.1	25.6	26.0	24.4	24.9	24.8	25.4	25.8
Variations with the observer position at spacings:										
S = 1.0H	+ 0.2 / - 0.2					+ 0.2 / - 0.2				
1.5H	+ 0.2 / - 0.3					+ 0.2 / - 0.3				
2.0H	+ 0.2 / - 0.3					+ 0.2 / - 0.3				

CIE Pub.117, 1904 lm Total Lamp Luminous Flux Correct (8log(F/F0) = 2.2)

C Range: 0 - 360DEG  
 C Interval: 15.0DEG  
 Test Speed: HIGH  
 Temperature:25.3DEG  
 Operators:Meng yongjian  
 Test Date:2018-04-08

γ Range: 0 - 90DEG  
 γ Interval: 1.0DEG  
 Test System:EVERFINE GO-2000B\_V1 SYSTEM V2.0.288  
 Humidity:52%  
 Test Distance:5.850m [K=1.0000]  
 Remarks:

UTILIZATION FACTORS TABLE

Test:U:44.50V I:0.3500A P:15.57W PF:1.000 Freq:0Hz Lamp Flux:1904.49x1 lm		
NAME: FL600-GL600-16W-840	TYPE:Linear Light	SERIAL No.:
SPEC.:4000K	DIM.: L600mm*W50mm*H80mm	
MFR.: NEKO LIGHTING AG		

REFLECTANCE										
Ceiling	0.8	0.8	0.8	0.7	0.7	0.7	0.5	0.5	0.5	0
Walls	0.7	0.5	0.3	0.7	0.5	0.3	0.7	0.5	0.3	0
Working plane	0.2	0.2	0.2	0.2	0.2	0.2	0.2	0.2	0.2	0
ROOM INDEX	UTILIZATION FACTORS(PERCENT) $k(RI) \times RCR = 5$									
k = 0.60	59	47	41	58	47	41	57	47	40	34
0.80	69	58	50	68	57	50	66	56	50	43
1.00	77	66	59	76	66	59	74	67	58	52
1.25	84	74	67	83	73	67	80	72	66	59
1.50	89	80	73	87	79	72	85	77	71	64
2.00	96	88	81	94	86	81	91	84	79	71
2.50	100	92	86	98	91	85	94	88	83	75
3.00	103	96	91	101	95	90	97	92	88	79
4.00	107	101	97	104	99	95	100	96	93	84
5.00	109	104	101	107	102	99	102	99	96	87
ROOM INDEX	UF(total)									Direct
According to DIN EN 13032-2 2004			Suspended				SHRNOM = 1.25			

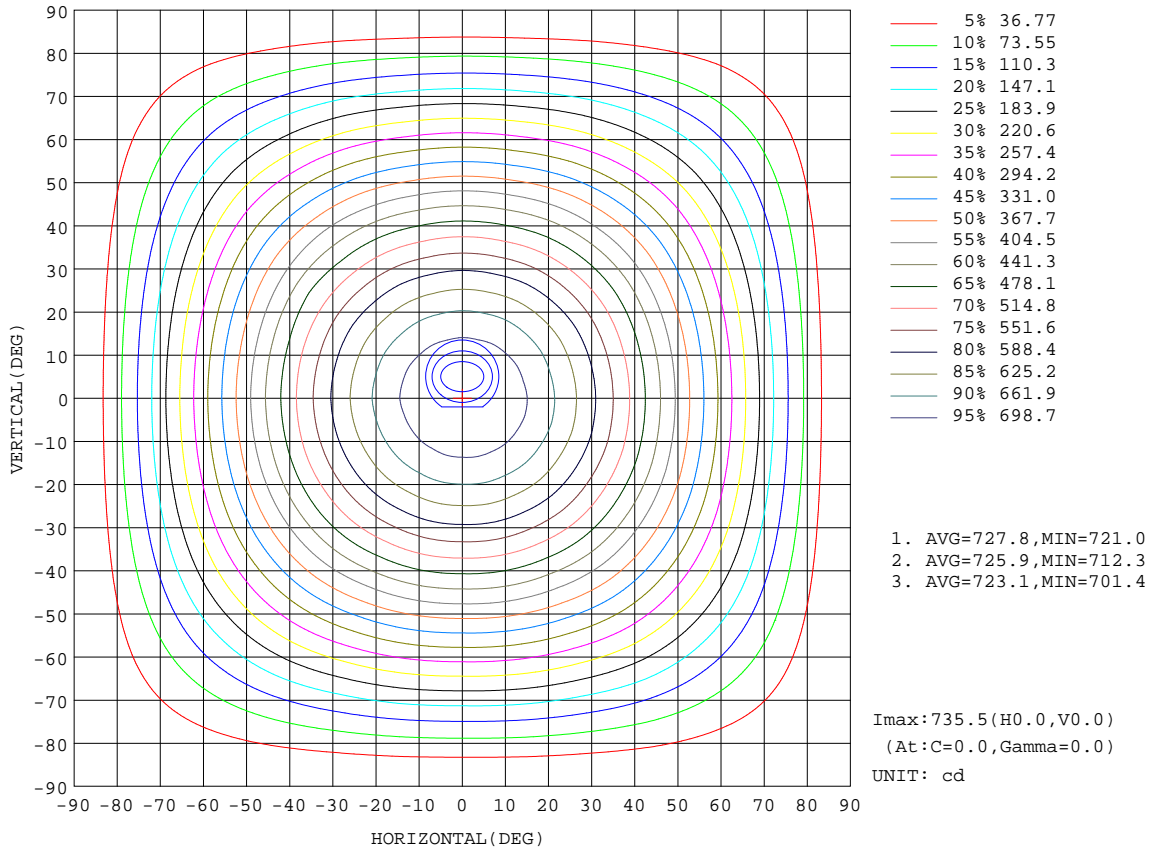
C Range: 0 - 360DEG  
 C Interval: 15.0DEG  
 Test Speed: HIGH  
 Temperature:25.3DEG  
 Operators:Meng yongjian  
 Test Date:2018-04-08

$\gamma$  Range: 0 - 90DEG  
 $\gamma$  Interval: 1.0DEG  
 Test System:EVERFINE GO-2000B\_V1 SYSTEM V2.0.288  
 Humidity:52%  
 Test Distance:5.850m [K=1.0000]  
 Remarks:



**ISOCANDELA DIAGRAM**

Test:U:44.50V I:0.3500A P:15.57W PF:1.000 Freq:0Hz Lamp Flux:1904.49x1 lm		
NAME: FL600-GL600-16W-840	TYPE:Linear Light	SERIAL No.:
SPEC.:4000K	DIM.: L600mm*W50mm*H80mm	
MFR.: NEKO LIGHTING AG		



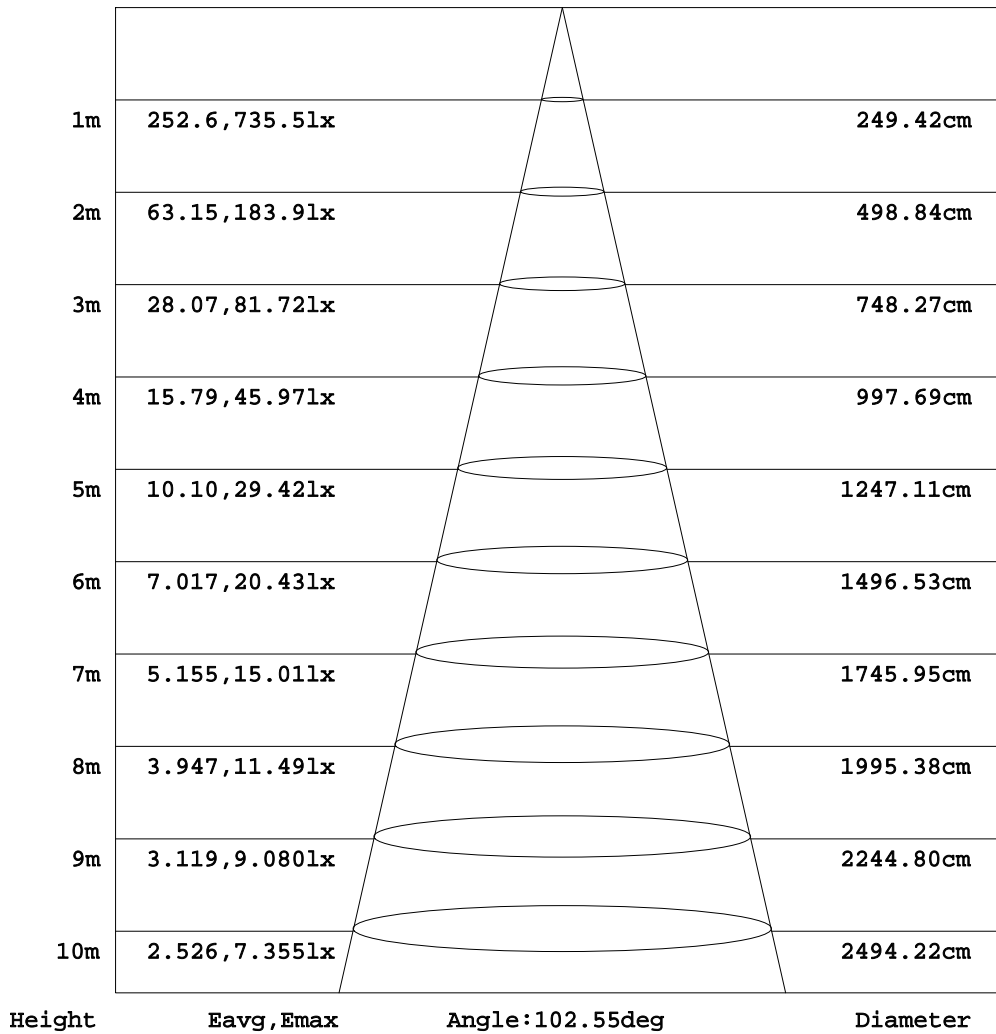
C Range: 0 - 360DEG  
C Interval: 15.0DEG  
Test Speed: HIGH  
Temperature: 25.3DEG  
Operators: Meng yongjian  
Test Date: 2018-04-08

γ Range: 0 - 90DEG  
γ Interval: 1.0DEG  
Test System: EVERFINE GO-2000B\_V1 SYSTEM V2.0.288  
Humidity: 52%  
Test Distance: 5.850m [K=1.0000]  
Remarks:

**AAI Figure**

Test:U:44.50V I:0.3500A P:15.57W PF:1.000 Freq:0Hz Lamp Flux:1904.49x1 lm		
NAME: FL600-GL600-16W-840	TYPE:Linear Light	SERIAL No.:
SPEC.:4000K	DIM.: L600mm*W50mm*H80mm	
MFR.: NEKO LIGHTING AG		

Flux out:1300 lm



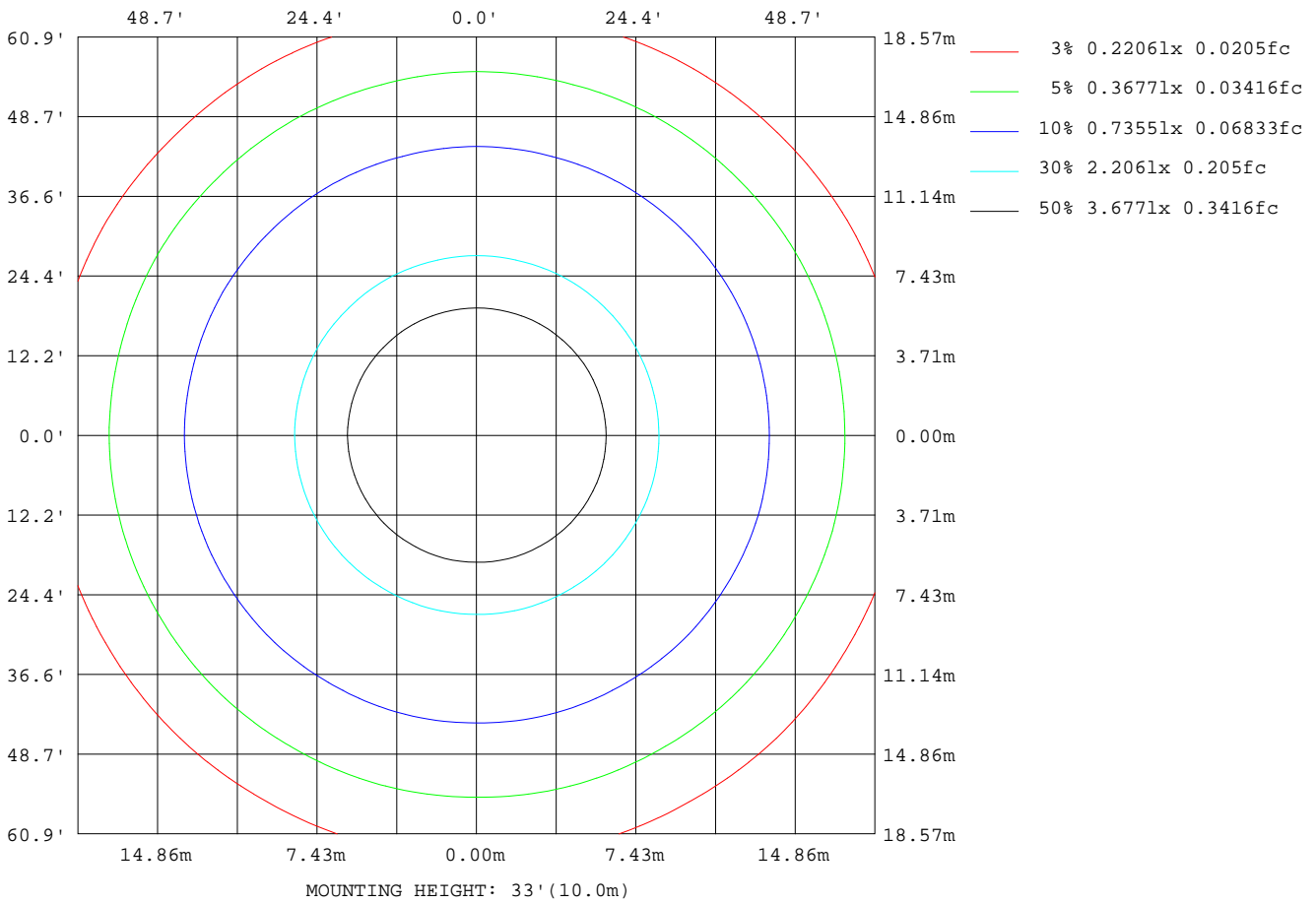
Note: The Curves indicate the illuminated area and the average illumination when the luminaire is at different distance.

C Range: 0 - 360DEG  
C Interval: 15.0DEG  
Test Speed: HIGH  
Temperature: 25.3DEG  
Operators: Meng yongjian  
Test Date: 2018-04-08

γ Range: 0 - 90DEG  
γ Interval: 1.0DEG  
Test System: EVERFINE GO-2000B\_V1 SYSTEM V2.0.288  
Humidity: 52%  
Test Distance: 5.850m [K=1.0000]  
Remarks:

**ISOLUX DIAGRAM**

Test:U:44.50V I:0.3500A P:15.57W PF:1.000 Freq:0Hz Lamp Flux:1904.49x1 lm		
NAME: FL600-GL600-16W-840	TYPE:Linear Light	SERIAL No.:
SPEC.:4000K	DIM.: L600mm*W50mm*H80mm	
MFR.: NEKO LIGHTING AG		



C Range: 0 - 360DEG  
 C Interval: 15.0DEG  
 Test Speed: HIGH  
 Temperature:25.3DEG  
 Operators:Meng yongjian  
 Test Date:2018-04-08

γ Range: 0 - 90DEG  
 γ Interval: 1.0DEG  
 Test System:EVERFINE GO-2000B\_V1 SYSTEM V2.0.288  
 Humidity:52%  
 Test Distance:5.850m [K=1.0000]  
 Remarks:

LED Avg.L Report

Test:U:44.50V I:0.3500A P:15.57W PF:1.000 Freq:0Hz Lamp Flux:1904.49x1 lm		
NAME: FL600-GL600-16W-840	TYPE:Linear Light	SERIAL No.:
SPEC.:4000K	DIM.: L600mm*W50mm*H80mm	
MFR.: NEKO LIGHTING AG		

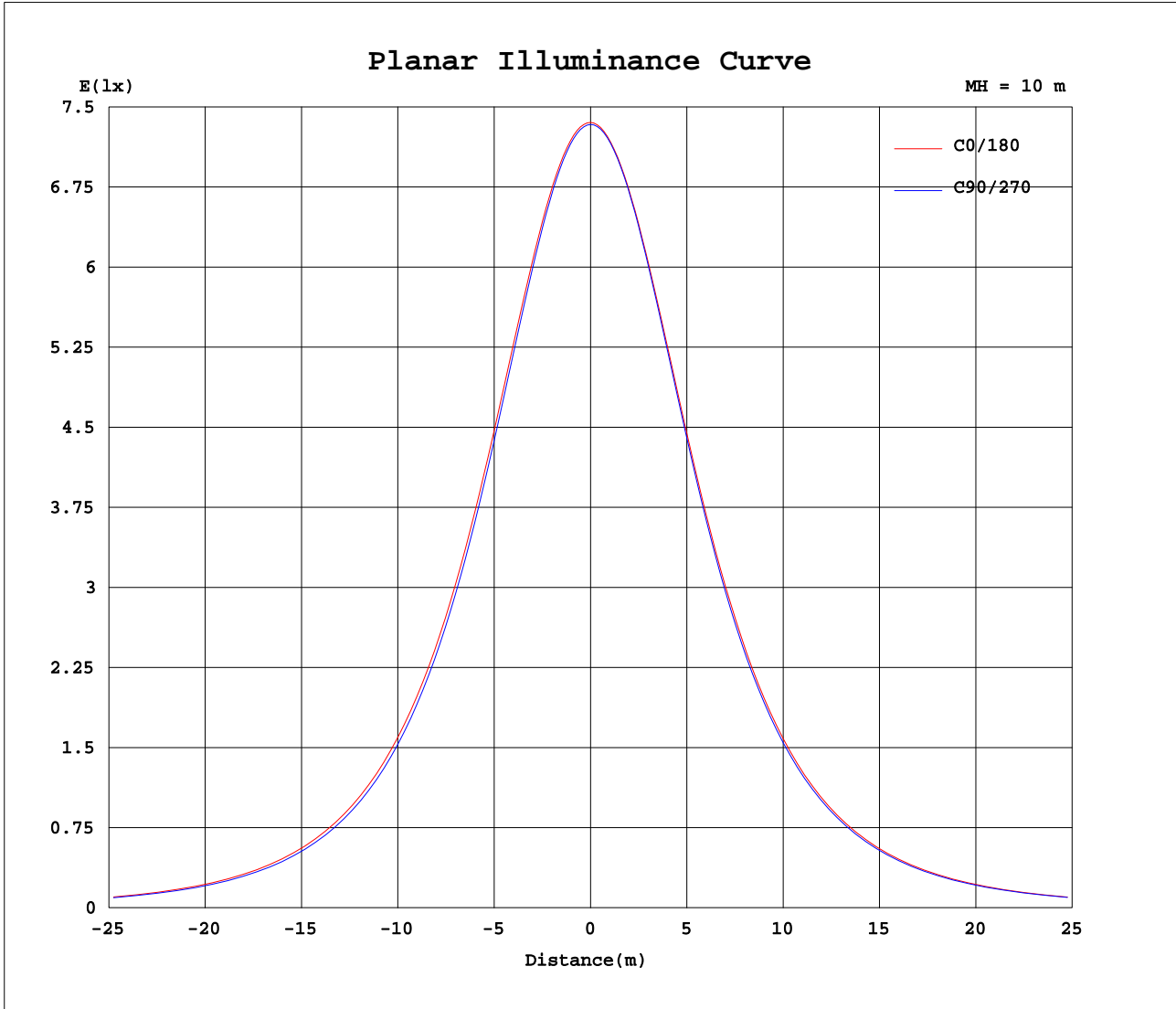
AvgL	cd/m2
L_0~180(65)av	16570
L_0~180(75)av	13681
L_0~180(85)av	8524
L_90~270(65)av	15819
L_90~270(75)av	13310
L_90~270(85)av	9084
L_45(65)av	16173
L_45(75)av	13515
L_45(85)av	8972

Standard: GB/T 29293-2012

C Range: 0 - 360DEG  
C Interval: 15.0DEG  
Test Speed: HIGH  
Temperature:25.3DEG  
Operators:Meng yongjian  
Test Date:2018-04-08

$\gamma$  Range: 0 - 90DEG  
 $\gamma$  Interval: 1.0DEG  
Test System:EVERFINE GO-2000B\_V1 SYSTEM V2.0.288  
Humidity:52%  
Test Distance:5.850m [K=1.0000]  
Remarks:

Planar Illuminance Curve



C Range: 0 - 360DEG  
 C Interval: 15.0DEG  
 Test Speed: HIGH  
 Temperature: 25.3DEG  
 Operators: Meng yongjian  
 Test Date: 2018-04-08

$\gamma$  Range: 0 - 90DEG  
 $\gamma$  Interval: 1.0DEG  
 Test System: EVERFINE GO-2000B\_V1 SYSTEM V2.0.288  
 Humidity: 52%  
 Test Distance: 5.850m [K=1.0000]  
 Remarks:

LUMINOUS DISTRIBUTION INTENSITY DATA

Test:U:44.50V I:0.3500A P:15.57W PF:1.000 Freq:0Hz Lamp Flux:1904.49x1 lm		
NAME: FL600-GL600-16W-840	TYPE:Linear Light	SERIAL No.:
SPEC.:4000K	DIM.: L600mm*W50mm*H80mm	
MFR.: NEKO LIGHTING AG		

Table--1

UNIT: cd

C(DEG) γ (DEG)	0	15	30	45	60	75	90	105	120	135	150	165	180	195	210	225	240	255	270
0	735	735	735	734	734	734	734	733	733	733	733	733	735	735	735	734	734	734	734
5	732	731	731	730	730	729	729	729	728	728	728	728	731	730	730	730	730	729	729
10	720	719	718	718	716	716	715	715	714	714	715	715	718	717	717	716	716	716	716
15	699	699	697	696	694	694	692	692	691	692	693	694	696	695	695	694	694	693	694
20	671	671	669	668	665	663	661	662	661	663	664	665	668	667	667	665	665	663	664
25	637	637	634	632	628	627	624	625	624	627	628	630	633	632	631	629	628	626	627
30	597	597	593	591	586	585	582	583	582	585	587	590	593	591	591	587	587	584	585
35	552	552	548	545	540	538	535	536	536	539	541	545	548	546	545	542	541	538	539
40	503	503	499	496	490	488	485	486	486	490	493	496	499	498	497	493	491	488	489
45	451	452	447	444	439	436	433	434	434	438	441	445	448	446	446	442	440	436	437
50	398	398	393	390	385	383	379	381	381	385	388	391	394	393	392	388	386	383	384
55	343	343	338	335	330	328	325	326	326	330	333	336	339	339	337	333	332	328	329
60	286	286	282	279	274	273	270	271	271	274	277	280	283	281	281	277	276	273	275
65	229	229	225	224	219	217	215	216	215	219	221	224	226	225	225	221	221	219	220
70	172	172	169	168	164	163	161	162	161	164	165	167	169	168	169	166	167	165	166
75	116	117	115	114	112	111	110	110	109	111	111	113	114	113	114	114	114	113	114
80	65.6	66.0	65.3	65.6	64.1	64.4	63.1	63.6	62.5	63.1	62.8	63.3	64.0	63.7	65.5	65.8	66.9	66.7	67.5
85	23.9	24.5	24.3	25.0	24.5	24.7	24.0	24.3	23.5	23.8	23.7	23.9	24.4	24.4	25.7	25.9	27.0	26.7	27.5
90	0.39	0.39	0.40	0.40	0.39	0.39	0.40	0.47	0.64	0.80	0.98	1.05	1.11	1.05	0.98	0.91	0.85	0.81	0.84

C Range: 0 - 360DEG  
C Interval: 15.0DEG  
Test Speed: HIGH  
Temperature:25.3DEG  
Operators:Meng yongjian  
Test Date:2018-04-08

γ Range: 0 - 90DEG  
γ Interval: 1.0DEG  
Test System:EVERFINE GO-2000B\_V1 SYSTEM V2.0.288  
Humidity:52%  
Test Distance:5.850m [K=1.0000]  
Remarks:

LUMINOUS DISTRIBUTION INTENSITY DATA

Test:U:44.50V I:0.3500A P:15.57W PF:1.000 Freq:0Hz Lamp Flux:1904.49x1 lm		
NAME: FL600-GL600-16W-840	TYPE:Linear Light	SERIAL No.:
SPEC.:4000K	DIM.: L600mm*W50mm*H80mm	
MFR.: NEKO LIGHTING AG		

Table--2

UNIT: cd

C(DEG) γ (DEG)	285	300	315	330	345														
0	733	733	733	733	733														
5	729	730	730	730	730														
10	716	717	717	718	718														
15	694	696	696	697	697														
20	664	666	667	669	669														
25	627	630	632	634	635														
30	585	589	591	594	595														
35	539	543	546	549	550														
40	489	494	496	500	502														
45	438	442	445	449	450														
50	384	389	391	395	397														
55	329	334	336	340	342														
60	275	279	281	284	285														
65	220	223	225	228	229														
70	166	169	169	172	172														
75	114	116	116	117	117														
80	67.4	68.2	67.8	67.4	66.3														
85	27.1	27.6	26.9	26.2	24.8														
90	0.82	0.62	0.55	0.45	0.42														

C Range: 0 - 360DEG  
 C Interval: 15.0DEG  
 Test Speed: HIGH  
 Temperature:25.3DEG  
 Operators:Meng yongjian  
 Test Date:2018-04-08

γ Range: 0 - 90DEG  
 γ Interval: 1.0DEG  
 Test System:EVERFINE GO-2000B\_V1 SYSTEM V2.0.288  
 Humidity:52%  
 Test Distance:5.850m [K=1.0000]  
 Remarks: