

GONIOPHOTOMETERS SYSTEM TEST REPORT

LED FUSION Linear Series FL600-GL600-16W-830



Light Output Ratio:	100.0%	
Luminaire Power:	15.51 W	
SHR Nominal:	1.25	Calculated using the TM5
SHR Maximum:	1.35	fine grid method.

C Range: 0 - 360DEG
C Interval: 15.0DEG
Test Speed: HIGH
Temperature:25.3DEG
Operators:Meng yongjian
Test Date:2018-04-08

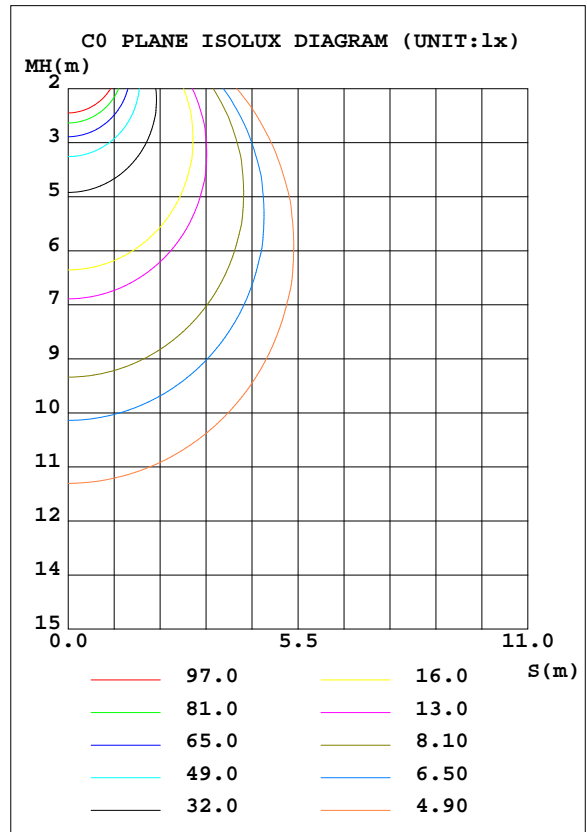
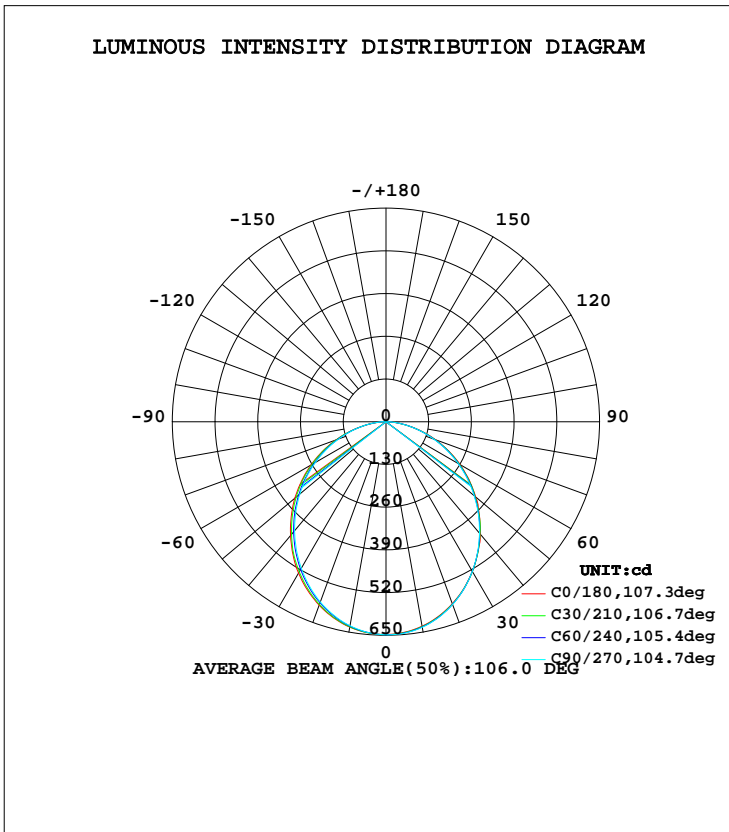
γ Range: 0 - 90DEG
 γ Interval: 1.0DEG
Test System:EVERFINE GO-2000B_V1 SYSTEM V2.0.288
Humidity:52%
Test Distance:5.850m [K=1.0000]
Remarks:

GONIOPHOTOMETERS SYSTEM TEST REPORT

LUMINAIRE PHOTOMETRIC TEST REPORT

Test:U:44.30V I:0.3500A P:15.51W PF:1.000 Lamp Flux:1732.47x1 lm		
NAME: FL600-GL600-16W-830	TYPE:Linear Light	SERIAL No.:
SPEC.:3000K	DIM.: L600mm*W50mm*H95mm	
MFR.: NEKO LIGHTING AG		

DATA OF LAMP		PHOTOMETRIC DATA Eff: 111.74 lm/W			
MODEL	SAMSUNG-3000K	I _{max} (cd)	649.1	S/MH(C0/180)	1.23
NOMINAL POWER(W)	16	LOR(%)	100.0	S/MH(C90/270)	1.19
RATED VOLTAGE(V)	48	TOTAL FLUX(lm)	1732.5	η UP, DN(C0-180)	0.0, 50.2
NOMINAL FLUX(lm)	1732.47	CIE CLASS	DIRECT	η UP, DN(C180-360)	0.0, 49.8
LAMPS INSIDE	1	η up(%)	0.0	CIBSE SHR NOM	1.25
TEST VOLTAGE(V)	44.3	η down(%)	100.0	CIBSE SHR MAX	1.35



C Range: 0 - 360DEG
 C Interval: 15.0DEG
 Test Speed: HIGH
 Temperature:25.3DEG
 Operators:Meng yongjian
 Test Date:2018-04-08

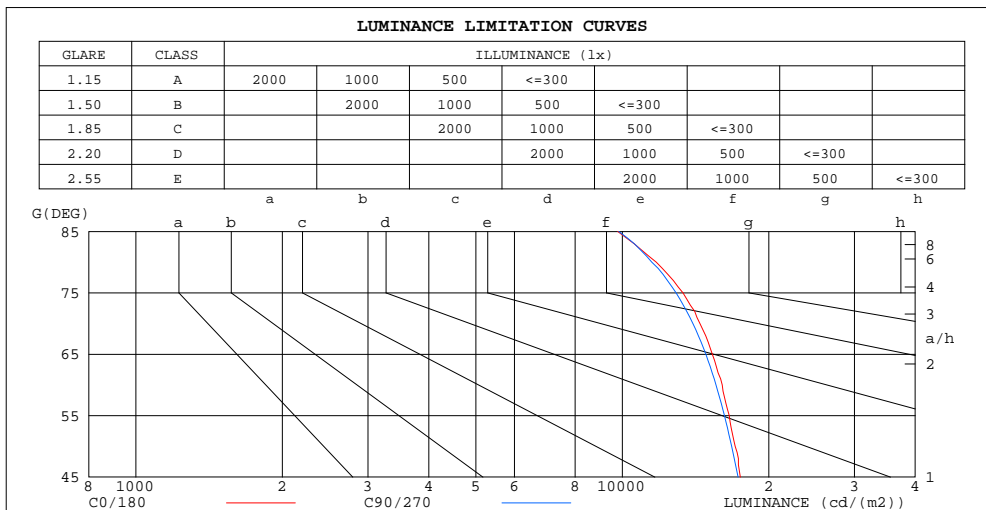
γ Range: 0 - 90DEG
 γ Interval: 1.0DEG
 Test System:EVERFINE GO-2000B_V1 SYSTEM V2.0.288
 Humidity:52%
 Test Distance:5.850m [K=1.0000]
 Remarks:

GONIOPHOTOMETERS SYSTEM TEST REPORT

**ZONAL FLUX DIAGRAM
AND LUMINANCE LIMITATION CURVES**

ZONAL FLUX DIAGRAM:

γ	C0	C45	C90	C135	C180	C225	C270	C315	γ	Φ zone	Φ total	Φ lum, lamp
10	631.8	634.1	635.1	635.9	634.8	632.3	630.5	632.5	0- 10	61.17	61.17	3.53,3.53
20	589.6	591.8	592.2	593.6	594.3	588.4	583.8	588.4	10- 20	173.4	234.6	13.5,13.5
30	525.5	526.9	525.5	528.6	532.3	522.3	515.3	522.3	20- 30	257.9	492.5	28.4,28.4
40	446.7	445.5	442.7	447.0	451.9	442.5	432.7	441.2	30- 40	303.9	796.4	46,46
50	356.6	354.5	350.5	356.0	362.5	350.6	342.4	354.5	40- 50	308.2	1105	63.8,63.8
60	260.7	257.6	253.2	257.5	264.5	254.7	248.1	255.8	50- 60	272.8	1377	79.5,79.5
70	160.5	159.0	155.2	157.8	162.5	157.1	153.8	159.0	60- 70	205.1	1582	91.3,91.3
80	66.28	66.45	64.89	64.59	65.83	66.49	66.38	68.45	70- 80	117.0	1700	98.1,98.1
90	1.568	1.010	0.4679	0.8746	1.063	1.649	1.738	2.678	80- 90	32.95	1732	100,100
100									90-100			
110									100-110			
120									110-120			
130									120-130			
140									130-140			
150									140-150			
160									150-160			
170									160-170			
180									170-180			
DEG	LUMINOUS INTENSITY:cd									UNIT:lm		



C Range: 0 - 360DEG
 C Interval: 15.0DEG
 Test Speed: HIGH
 Temperature: 25.3DEG
 Operators: Meng yongjian
 Test Date: 2018-04-08

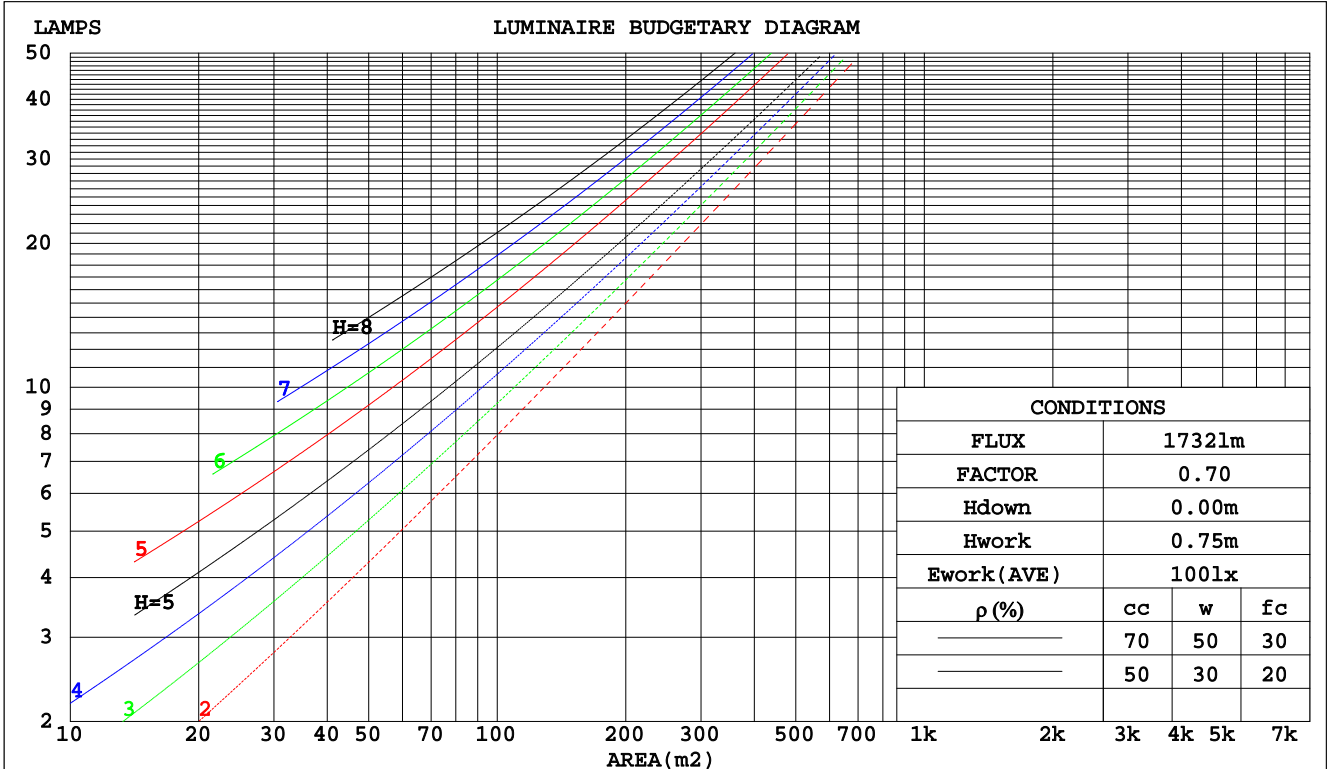
γ Range: 0 - 90DEG
 γ Interval: 1.0DEG
 Test System: EVERFINE GO-2000B_V1 SYSTEM V2.0.288
 Humidity: 52%
 Test Distance: 5.850m [K=1.0000]
 Remarks:

GONIOPHOTOMETERS SYSTEM TEST REPORT

CU AND LUMINAIRE BUDGETARY ESTIMATE DIAGRAM

Test:U:44.30V I:0.3500A P:15.51W PF:1.000 Lamp Flux:1732.47x1 lm		
NAME: FL600-GL600-16W-830	TYPE:Linear Light	SERIAL No.:
SPEC.:3000K	DIM.: L600mm*W50mm*H95mm	
MFR.: NEKO LIGHTING AG		

pcc	80%			70%			50%			30%			10%			0
	50%	30%	10%	50%	30%	10%	50%	30%	10%	50%	30%	10%	50%	30%	10%	0
pw																0
pfc	20%			20%			20%			20%			20%			0
RCR	RCR:Room Cavity Ratio Coefficients of Utilization(CU)															
0.0	1.19	1.19	1.19	1.16	1.16	1.16	1.11	1.11	1.11	1.06	1.06	1.06	1.02	1.02	1.02	1.00
1.0	1.04	.00	.96	1.02	.98	.94	.98	.94	.91	.94	.91	.89	.90	.88	.86	.84
2.0	.91	.84	.78	.89	.83	.77	.85	.80	.76	.82	.78	.74	.79	.75	.72	.70
3.0	.80	.72	.65	.78	.71	.65	.75	.69	.63	.73	.67	.62	.70	.65	.61	.59
4.0	.71	.62	.55	.70	.61	.55	.67	.60	.54	.65	.58	.53	.62	.57	.53	.51
5.0	.63	.54	.48	.62	.54	.48	.60	.53	.47	.58	.52	.46	.56	.51	.46	.44
6.0	.57	.48	.42	.56	.48	.42	.54	.47	.41	.53	.46	.41	.51	.45	.40	.38
7.0	.52	.43	.37	.51	.43	.37	.49	.42	.37	.48	.41	.36	.47	.41	.36	.34
8.0	.47	.39	.33	.47	.39	.33	.45	.38	.33	.44	.37	.33	.43	.37	.32	.30
9.0	.43	.35	.30	.43	.35	.30	.42	.35	.30	.41	.34	.29	.40	.34	.29	.27
10.0	.40	.32	.27	.40	.32	.27	.39	.32	.27	.38	.31	.27	.37	.31	.27	.25



C Range: 0 - 360DEG
 C Interval: 15.0DEG
 Test Speed: HIGH
 Temperature: 25.3DEG
 Operators: Meng yongjian
 Test Date: 2018-04-08

γ Range: 0 - 90DEG
 γ Interval: 1.0DEG
 Test System: EVERFINE GO-2000B_V1 SYSTEM V2.0.288
 Humidity: 52%
 Test Distance: 5.850m [K=1.0000]
 Remarks:

GONIOPHOTOMETERS SYSTEM TEST REPORT

WEC AND CCEC

Test:U:44.30V I:0.3500A P:15.51W PF:1.000 Lamp Flux:1732.47x1 lm		
NAME: FL600-GL600-16W-830	TYPE:Linear Light	SERIAL No.:
SPEC.:3000K	DIM.: L600mm*W50mm*H95mm	
MFR.: NEKO LIGHTING AG		

ρcc	80%			70%			50%			30%			10%			0
ρw	50%	30%	10%	50%	30%	10%	50%	30%	10%	50%	30%	10%	50%	30%	10%	0
ρfc	20%			20%			20%			20%			20%			0
RCR	RCR:Room Cavity Ratio						Wall Exitance Coefficients(WEC)									
0.0																
1.0	.306	.174	.055	.299	.171	.054	.286	.164	.052	.274	.158	.051	.263	.152	.049	
2.0	.288	.158	.048	.282	.155	.048	.270	.150	.047	.260	.146	.046	.250	.141	.045	
3.0	.267	.142	.043	.261	.140	.042	.251	.136	.041	.242	.132	.041	.233	.129	.040	
4.0	.246	.128	.038	.242	.126	.037	.232	.123	.037	.224	.120	.036	.216	.117	.036	
5.0	.228	.116	.034	.224	.115	.033	.216	.112	.033	.208	.110	.033	.201	.107	.032	
6.0	.212	.106	.030	.208	.105	.030	.201	.103	.030	.194	.101	.030	.187	.099	.029	
7.0	.197	.097	.028	.194	.096	.027	.187	.095	.027	.181	.093	.027	.175	.091	.027	
8.0	.184	.090	.025	.181	.089	.025	.175	.088	.025	.170	.086	.025	.165	.085	.025	
9.0	.173	.084	.023	.170	.083	.023	.165	.081	.023	.160	.080	.023	.155	.079	.023	
10.0	.162	.078	.022	.160	.077	.022	.155	.076	.021	.151	.075	.021	.147	.074	.021	

ρcc	80%			70%			50%			30%			10%			0
ρw	50%	30%	10%	50%	30%	10%	50%	30%	10%	50%	30%	10%	50%	30%	10%	0
ρfc	20%			20%			20%			20%			20%			0
RCR	RCR:Room Cavity Ratio						Ceiling Cavity Exitance Coefficients(CCEC)									
0.0	.190	.190	.190	.163	.163	.163	.111	.111	.111	.064	.064	.064	.020	.020	.020	
1.0	.180	.156	.135	.154	.134	.116	.105	.092	.080	.061	.053	.047	.019	.017	.015	
2.0	.172	.132	.098	.147	.114	.085	.101	.079	.059	.058	.046	.035	.019	.015	.011	
3.0	.164	.114	.075	.140	.099	.065	.096	.068	.045	.056	.040	.027	.018	.013	.009	
4.0	.156	.101	.059	.134	.087	.051	.092	.061	.036	.053	.036	.021	.017	.012	.007	
5.0	.149	.090	.048	.128	.078	.041	.088	.055	.029	.051	.032	.017	.016	.010	.006	
6.0	.142	.082	.039	.122	.071	.034	.084	.050	.024	.049	.029	.014	.016	.010	.005	
7.0	.135	.075	.033	.116	.065	.029	.080	.046	.021	.047	.027	.012	.015	.009	.004	
8.0	.128	.069	.029	.110	.060	.025	.076	.042	.018	.044	.025	.011	.014	.008	.004	
9.0	.122	.064	.025	.105	.056	.022	.073	.039	.016	.043	.023	.009	.014	.008	.003	
10.0	.117	.060	.023	.101	.052	.020	.070	.037	.014	.041	.022	.008	.013	.007	.003	

C Range: 0 - 360DEG
 C Interval: 15.0DEG
 Test Speed: HIGH
 Temperature:25.3DEG
 Operators:Meng yongjian
 Test Date:2018-04-08

γ Range: 0 - 90DEG
 γ Interval: 1.0DEG
 Test System:EVERFINE GO-2000B_V1 SYSTEM V2.0.288
 Humidity:52%
 Test Distance:5.850m [K=1.0000]
 Remarks:

GONIOPHOTOMETERS SYSTEM TEST REPORT

UGR(Unified Glare Rating) Table

Test:U:44.30V I:0.3500A P:15.51W PF:1.000 Lamp Flux:1732.47x1 lm		
NAME: FL600-GL600-16W-830	TYPE:Linear Light	SERIAL No.:
SPEC.:3000K	DIM.: L600mm*W50mm*H95mm	
MFR.: NEKO LIGHTING AG		

ceiling/cavity	0.7	0.7	0.5	0.5	0.3	0.7	0.7	0.5	0.5	0.3
walls	0.5	0.3	0.5	0.3	0.3	0.5	0.3	0.5	0.3	0.3
working plane	0.2	0.2	0.2	0.2	0.2	0.2	0.2	0.2	0.2	0.2
Room dimensions	Viewed crosswise					Viewed endwise				
x = 2H y = 2H	22.6	24.1	22.8	24.3	24.5	22.5	24.0	22.7	24.2	24.4
3H	24.1	25.5	24.4	25.7	25.9	23.9	25.3	24.2	25.5	25.8
4H	24.7	26.0	25.0	26.2	26.5	24.5	25.8	24.8	26.1	26.3
6H	25.1	26.3	25.4	26.6	26.9	24.9	26.2	25.2	26.4	26.7
8H	25.2	26.4	25.5	26.7	27.0	25.0	26.2	25.4	26.5	26.8
12H	25.2	26.4	25.6	26.7	27.0	25.1	26.3	25.5	26.6	26.9
4H 2H	23.2	24.5	23.5	24.7	25.0	23.1	24.4	23.4	24.6	24.9
3H	24.8	26.0	25.2	26.3	26.6	24.7	25.9	25.1	26.2	26.5
4H	25.5	26.6	25.9	26.9	27.2	25.4	26.5	25.8	26.8	27.1
6H	26.1	27.0	26.5	27.4	27.7	26.0	26.9	26.4	27.2	27.6
8H	26.2	27.1	26.7	27.5	27.9	26.1	27.0	26.5	27.4	27.8
12H	26.4	27.2	26.8	27.5	28.0	26.3	27.1	26.7	27.4	27.9
8H 4H	25.8	26.7	26.2	27.0	27.4	25.7	26.6	26.1	26.9	27.3
6H	26.5	27.2	26.9	27.6	28.0	26.4	27.1	26.8	27.5	27.9
8H	26.7	27.4	27.2	27.8	28.2	26.6	27.3	27.1	27.7	28.2
12H	26.9	27.5	27.4	27.9	28.4	26.8	27.4	27.3	27.8	28.3
12H 4H	25.8	26.6	26.2	27.0	27.4	25.7	26.5	26.1	26.9	27.3
6H	26.5	27.2	27.0	27.6	28.0	26.4	27.1	26.9	27.5	27.9
8H	26.8	27.4	27.3	27.8	28.3	26.7	27.3	27.2	27.7	28.2
Variations with the observer position at spacings:										
S = 1.0H	+ 0.2 / - 0.2					+ 0.2 / - 0.2				
1.5H	+ 0.2 / - 0.3					+ 0.2 / - 0.3				
2.0H	+ 0.2 / - 0.3					+ 0.2 / - 0.3				

CIE Pub.117 Corrected 1732 lm Total Lamp Luminous Flux.(8log(F/F0) = 1.9)

C Range: 0 - 360DEG
 C Interval: 15.0DEG
 Test Speed: HIGH
 Temperature:25.3DEG
 Operators:Meng yongjian
 Test Date:2018-04-08

γ Range: 0 - 90DEG
 γ Interval: 1.0DEG
 Test System:EVERFINE GO-2000B_V1 SYSTEM V2.0.288
 Humidity:52%
 Test Distance:5.850m [K=1.0000]
 Remarks:

GONIOPHOTOMETERS SYSTEM TEST REPORT

UTILIZATION FACTORS TABLE

Test:U:44.30V I:0.3500A P:15.51W PF:1.000 Lamp Flux:1732.47x1 lm		
NAME: FL600-GL600-16W-830	TYPE:Linear Light	SERIAL No.:
SPEC.:3000K	DIM.: L600mm*W50mm*H95mm	
MFR.: NEKO LIGHTING AG		

REFLECTANCE										
Ceiling	0.8	0.8	0.8	0.7	0.7	0.7	0.5	0.5	0.5	0
Walls	0.7	0.5	0.3	0.7	0.5	0.3	0.7	0.5	0.3	0
Working plane	0.2	0.2	0.2	0.2	0.2	0.2	0.2	0.2	0.2	0
ROOM INDEX	UTILIZATION FACTORS(PERCENT) $k(RI) \times RCR = 5$									
k = 0.60	58	47	40	58	47	40	56	46	40	33
0.80	68	57	50	67	56	49	66	56	49	42
1.00	77	66	58	75	65	58	73	66	58	51
1.25	84	73	66	82	73	66	80	71	65	58
1.50	89	79	72	87	78	71	84	76	70	63
2.00	95	87	81	94	86	80	90	83	78	71
2.50	99	92	86	97	90	85	93	87	83	75
3.00	102	96	90	100	94	89	96	91	87	79
4.00	106	101	96	104	99	95	100	96	92	83
5.00	109	104	100	106	102	98	102	98	95	86
ROOM INDEX	UF(total)									Direct
According to DIN EN 13032-2 2004			Suspended				SHRNOM = 1.25			

C Range: 0 - 360DEG
 C Interval: 15.0DEG
 Test Speed: HIGH
 Temperature:25.3DEG
 Operators:Meng yongjian
 Test Date:2018-04-08

γ Range: 0 - 90DEG
 γ Interval: 1.0DEG
 Test System:EVERFINE GO-2000B_V1 SYSTEM V2.0.288
 Humidity:52%
 Test Distance:5.850m [K=1.0000]
 Remarks:

GONIOPHOTOMETERS SYSTEM TEST REPORT

ISOCANDELA DIAGRAM

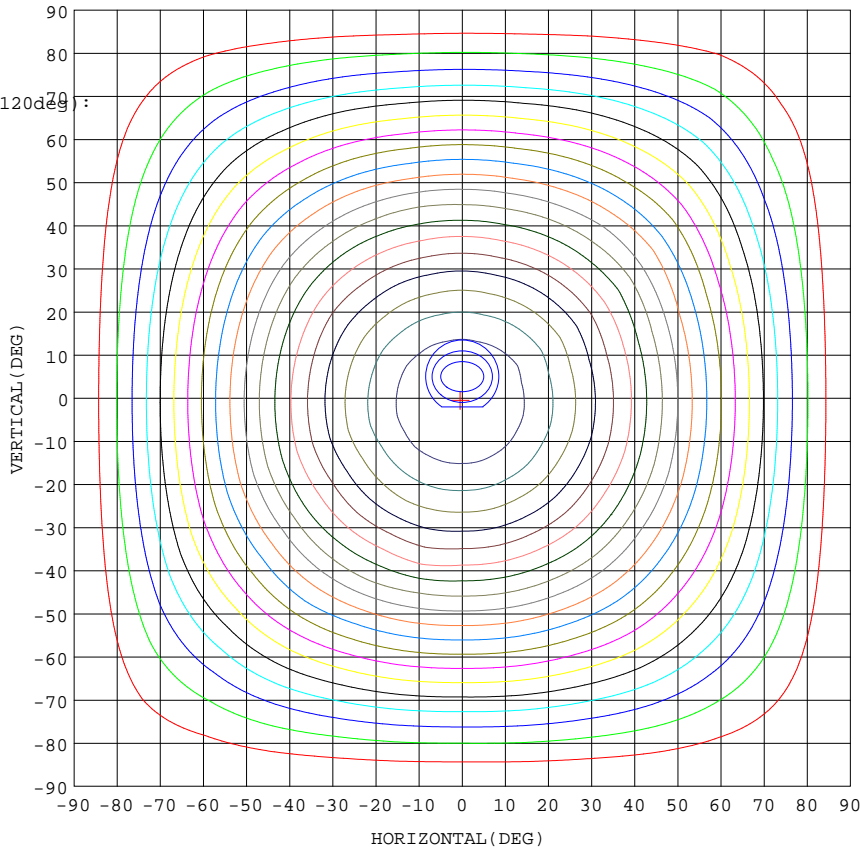
Test:U:44.30V I:0.3500A P:15.51W PF:1.000 Lamp Flux:1732.47x1 lm		
NAME: FL600-GL600-16W-830	TYPE:Linear Light	SERIAL No.:
SPEC.:3000K	DIM.: L600mm*W50mm*H95mm	
MFR.: NEKO LIGHTING AG		

Conical surface Flux(90deg):

952.54 lm
%lum = 55.0%
%lamp = 55.0%

Conical surface Flux(120deg):

1377.4 lm
%lum = 79.5%
%lamp = 79.5%



1. AVG=642.0, MIN=635.1
2. AVG=640.2, MIN=627.0
3. AVG=637.7, MIN=617.1

Imax:648.9(H=0.5,V=0.5)
(At:C=150.0,Gamma=0.0)

UNIT: cd

C Range: 0 - 360DEG
C Interval: 15.0DEG
Test Speed: HIGH
Temperature:25.3DEG
Operators:Meng yongjian
Test Date:2018-04-08

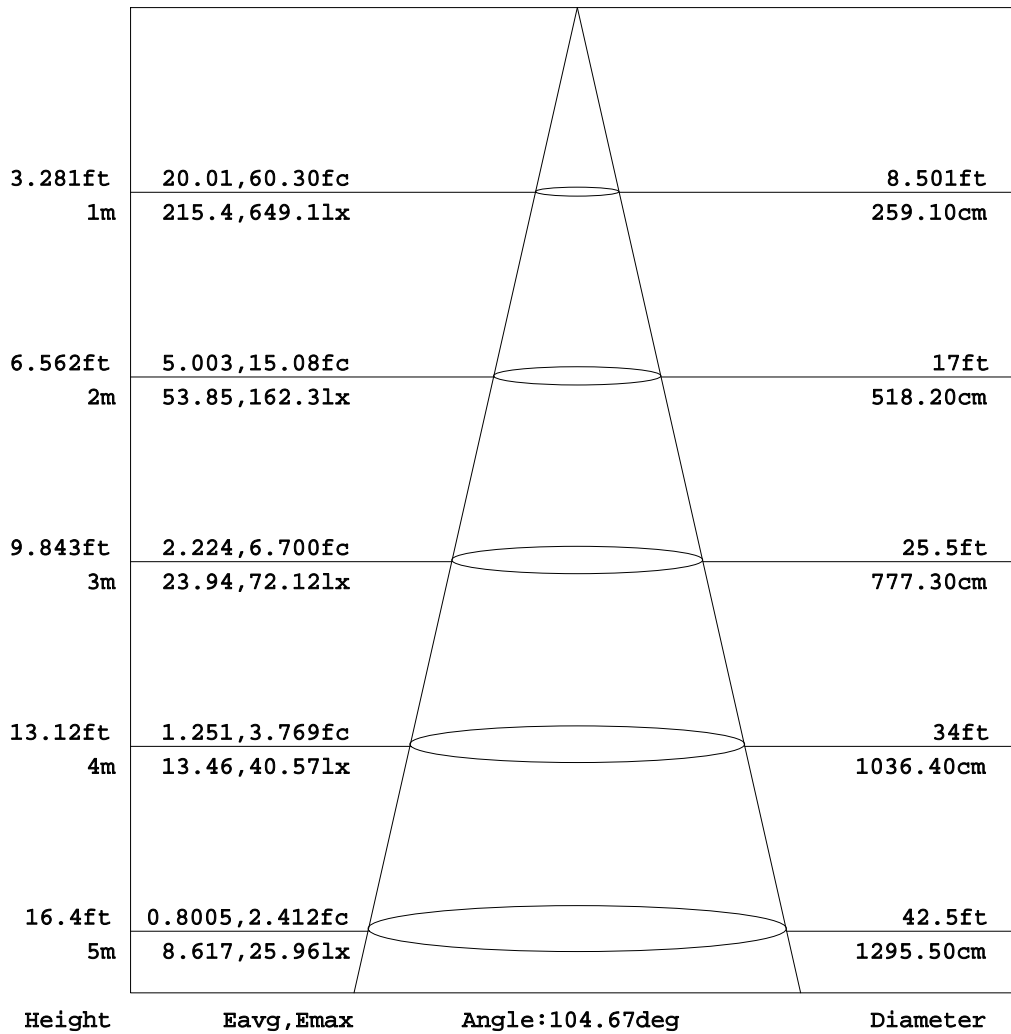
γ Range: 0 - 90DEG
γ Interval: 1.0DEG
Test System:EVERFINE GO-2000B_V1 SYSTEM V2.0.288
Humidity:52%
Test Distance:5.850m [K=1.0000]
Remarks:

GONIOPHOTOMETERS SYSTEM TEST REPORT

AAI Figure

Test:U:44.30V I:0.3500A P:15.51W PF:1.000 Lamp Flux:1732.47x1 lm		
NAME: FL600-GL600-16W-830	TYPE:Linear Light	SERIAL No.:
SPEC.:3000K	DIM.: L600mm*W50mm*H95mm	
MFR.: NEKO LIGHTING AG		

Flux out:1192 lm



Note:The Curves indicate the illuminated area and the average illumination when the luminaire is at different distance.

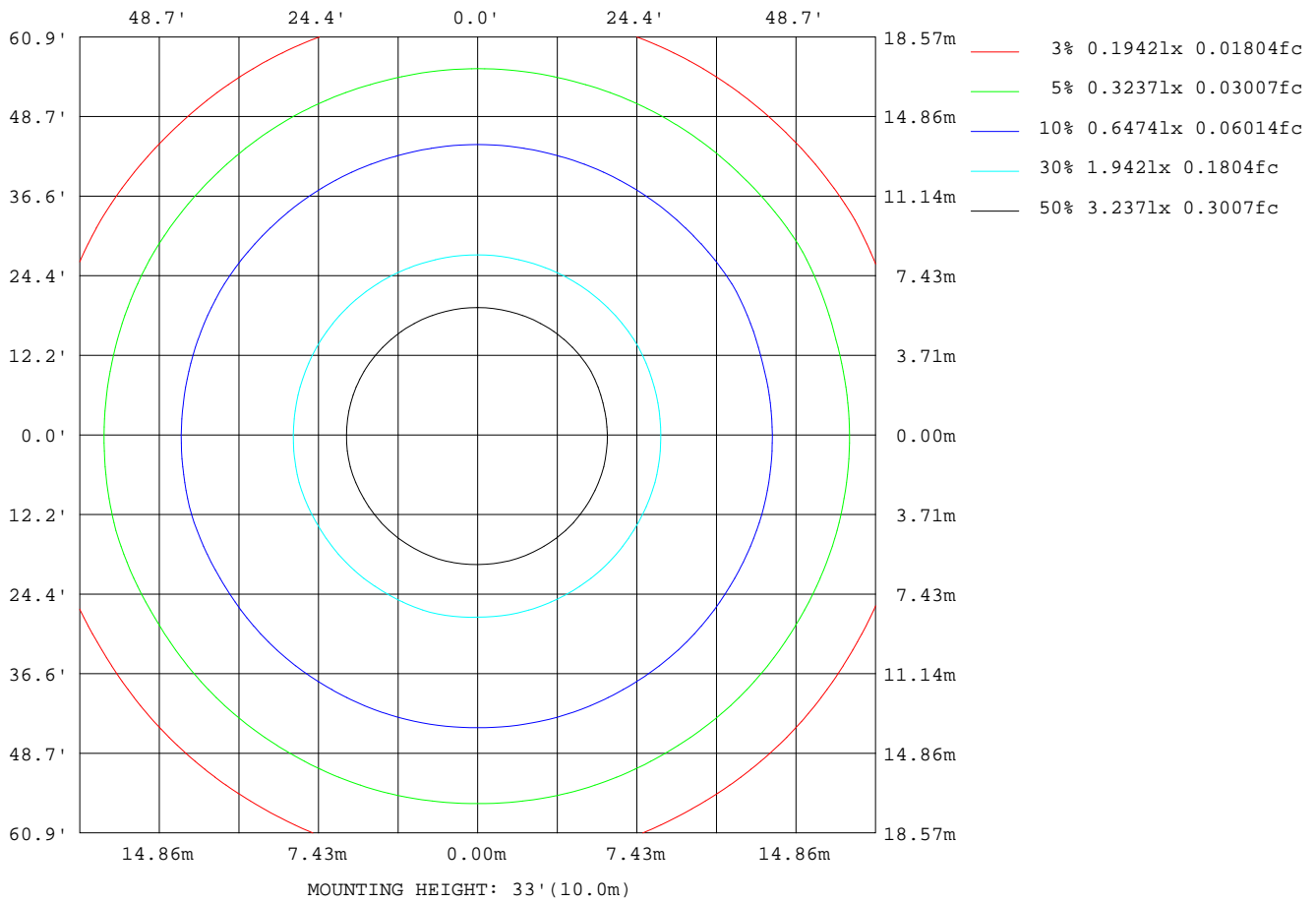
C Range: 0 - 360DEG
C Interval: 15.0DEG
Test Speed: HIGH
Temperature:25.3DEG
Operators:Meng yongjian
Test Date:2018-04-08

γ Range: 0 - 90DEG
γ Interval: 1.0DEG
Test System:EVERFINE GO-2000B_V1 SYSTEM V2.0.288
Humidity:52%
Test Distance:5.850m [K=1.0000]
Remarks:

GONIOPHOTOMETERS SYSTEM TEST REPORT

ISOLUX DIAGRAM

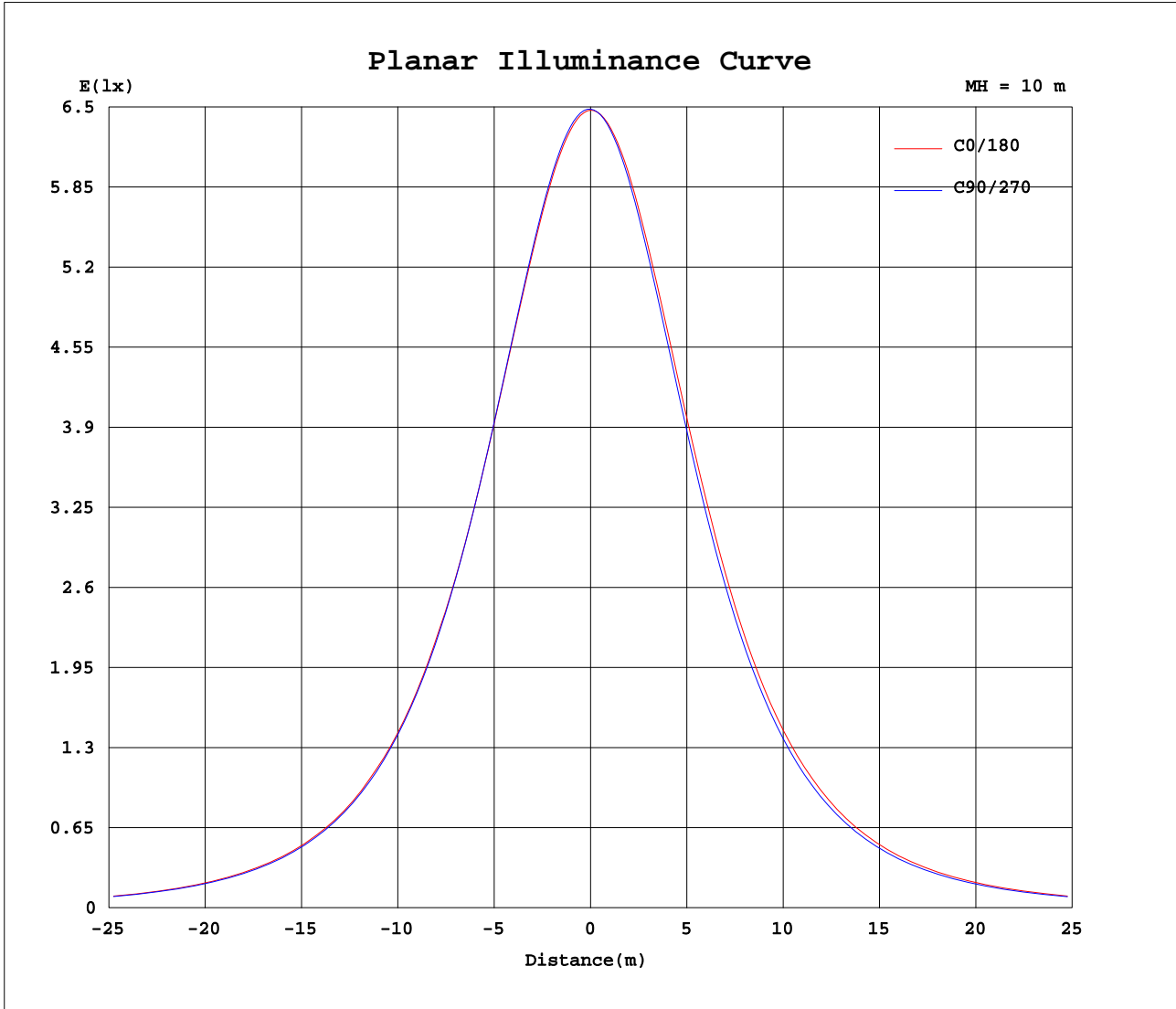
Test:U:44.30V I:0.3500A P:15.51W PF:1.000 Lamp Flux:1732.47x1 lm		
NAME: FL600-GL600-16W-830	TYPE:Linear Light	SERIAL No.:
SPEC.:3000K	DIM.: L600mm*W50mm*H95mm	
MFR.: NEKO LIGHTING AG		



C Range: 0 - 360DEG
 C Interval: 15.0DEG
 Test Speed: HIGH
 Temperature:25.3DEG
 Operators:Meng yongjian
 Test Date:2018-04-08

γ Range: 0 - 90DEG
 γ Interval: 1.0DEG
 Test System:EVERFINE GO-2000B_V1 SYSTEM V2.0.288
 Humidity:52%
 Test Distance:5.850m [K=1.0000]
 Remarks:

Planar Illuminance Curve



C Range: 0 - 360DEG
 C Interval: 15.0DEG
 Test Speed: HIGH
 Temperature: 25.3DEG
 Operators: Meng yongjian
 Test Date: 2018-04-08

γ Range: 0 - 90DEG
 γ Interval: 1.0DEG
 Test System: EVERFINE GO-2000B_V1 SYSTEM V2.0.288
 Humidity: 52%
 Test Distance: 5.850m [K=1.0000]
 Remarks:

GONIOPHOTOMETERS SYSTEM TEST REPORT

LUMINOUS DISTRIBUTION INTENSITY DATA

Test:U:44.30V I:0.3500A P:15.51W PF:1.000 Lamp Flux:1732.47x1 lm		
NAME: FL600-GL600-16W-830	TYPE:Linear Light	SERIAL No.:
SPEC.:3000K	DIM.: L600mm*W50mm*H95mm	
MFR.: NEKO LIGHTING AG		

Table--1

UNIT: cd

C(DEG) γ (DEG)	0	15	30	45	60	75	90	105	120	135	150	165	180	195	210	225	240	255	270
0	647	648	648	648	648	648	648	648	649	649	649	648	647	648	648	648	648	648	648
5	643	644	644	645	645	646	646	646	646	646	646	645	645	644	644	644	644	643	643
10	632	633	633	634	634	635	635	636	636	636	636	636	635	634	634	632	632	630	630
15	614	615	615	616	616	617	617	618	618	620	619	619	618	617	616	614	612	610	610
20	590	591	591	592	592	592	592	593	593	594	594	596	594	593	592	588	587	584	584
25	560	562	561	562	561	562	561	563	565	564	564	567	565	563	562	558	555	552	552
30	526	527	526	527	526	526	526	528	528	529	529	533	532	530	528	522	519	516	515
35	487	489	487	488	486	487	486	490	488	490	490	495	494	492	491	484	480	476	475
40	447	449	445	446	444	444	443	449	445	447	448	454	452	450	447	443	437	434	433
45	402	403	401	401	399	399	397	399	402	402	404	410	408	405	403	397	393	391	388
50	357	358	355	354	353	352	350	352	354	356	356	364	363	359	357	351	347	343	342
55	309	309	307	307	304	304	302	304	305	307	308	315	313	311	309	303	300	295	296
60	261	261	258	258	255	255	253	255	255	258	258	266	264	262	260	255	252	248	248
65	210	211	208	208	206	206	204	205	205	208	208	216	213	212	211	206	204	200	201
70	161	161	159	159	157	157	155	157	156	158	158	165	163	161	161	157	156	153	154
75	112	112	110	111	110	110	109	109	108	109	109	114	112	112	112	110	109	108	108
80	66.3	66.5	65.5	66.5	66.1	66.2	64.9	65.5	64.3	64.6	63.4	68.1	65.8	66.1	67.3	66.5	66.5	65.8	66.4
85	27.7	28.0	27.5	28.6	28.4	28.7	27.8	28.1	27.1	27.1	26.2	29.6	27.7	28.0	29.6	29.2	29.7	29.2	29.9
90	1.57	1.44	1.18	1.01	0.89	0.62	0.47	0.52	0.72	0.87	1.02	1.62	1.06	1.31	1.64	1.65	1.59	1.62	1.74

C Range: 0 - 360DEG
 C Interval: 15.0DEG
 Test Speed: HIGH
 Temperature:25.3DEG
 Operators:Meng yongjian
 Test Date:2018-04-08

γ Range: 0 - 90DEG
 γ Interval: 1.0DEG
 Test System:EVERFINE GO-2000B_V1 SYSTEM V2.0.288
 Humidity:52%
 Test Distance:5.850m [K=1.0000]
 Remarks:

GONIOPHOTOMETERS SYSTEM TEST REPORT

LUMINOUS DISTRIBUTION INTENSITY DATA

Test:U:44.30V I:0.3500A P:15.51W PF:1.000 Lamp Flux:1732.47x1 lm		
NAME: FL600-GL600-16W-830	TYPE:Linear Light	SERIAL No.:
SPEC.:3000K	DIM.: L600mm*W50mm*H95mm	
MFR.: NEKO LIGHTING AG		

Table--2

UNIT: cd

C(DEG) γ (DEG)	285	300	315	330	345																					
0	648	649	649	649	648																					
5	643	644	644	645	643																					
10	630	631	632	634	631																					
15	610	612	614	616	613																					
20	583	586	588	591	588																					
25	551	554	558	561	558																					
30	515	518	522	527	524																					
35	475	479	483	488	485																					
40	433	437	441	446	447																					
45	388	392	397	405	399																					
50	343	347	354	357	355																					
55	295	300	304	310	306																					
60	248	252	256	264	258																					
65	201	204	207	212	209																					
70	154	157	159	163	159																					
75	108	110	112	114	109																					
80	66.5	67.8	68.4	69.4	63.9																					
85	29.9	30.8	30.7	31.0	26.3																					
90	2.08	2.39	2.68	2.77	1.27																					

<p>C Range: 0 - 360DEG C Interval: 15.0DEG Test Speed: HIGH Temperature:25.3DEG Operators:Meng yongjian Test Date:2018-04-08</p>	<p>γ Range: 0 - 90DEG γ Interval: 1.0DEG Test System:EVERFINE GO-2000B_V1 SYSTEM V2.0.288 Humidity:52% Test Distance:5.850m [K=1.0000] Remarks:</p>
---	--

GONIOPHOTOMETERS SYSTEM TEST REPORT

Photometric Data Table [cd]

G/C	0.0	15.0	30.0	45.0	60.0	75.0	90.0	105.0	120.0	135.0
0.0	647.4	647.6	647.8	648.0	648.1	648.2	648.3	648.3	648.7	648.9
3.0	645.7	646.2	646.5	647.0	647.2	647.6	647.7	647.9	648.0	648.0
6.0	641.4	642.1	642.4	643.2	643.6	644.1	644.2	644.6	644.6	644.6
9.0	634.6	635.6	635.9	636.8	637.1	637.8	637.9	638.4	638.4	638.4
12.0	625.4	626.5	626.8	627.8	628.0	628.8	628.8	629.4	629.5	630.0
15.0	613.7	615.0	615.1	616.3	616.4	617.1	617.1	617.9	618.2	619.7
18.0	599.9	601.4	601.2	602.4	602.3	603.0	602.9	603.9	604.0	604.5
21.0	584.1	585.6	585.3	586.3	586.0	586.7	586.4	587.6	587.8	588.1
24.0	566.3	567.9	567.3	568.3	567.7	568.3	567.9	569.3	570.8	570.1
27.0	546.7	548.3	547.5	548.3	547.5	548.1	547.6	549.2	550.9	550.2
30.0	525.5	527.2	526.1	526.9	525.7	526.2	525.5	527.9	528.0	528.6
33.0	502.9	504.6	503.3	503.8	502.4	502.8	502.0	505.5	504.2	505.7
36.0	479.2	480.8	479.1	479.6	478.0	478.2	477.3	482.6	479.6	481.8
39.0	456.4	457.2	454.0	454.3	452.4	452.6	451.5	458.3	454.0	455.8
42.0	428.4	430.2	428.7	427.9	426.0	425.9	424.9	429.6	427.4	429.4
45.0	401.7	403.2	401.1	401.0	398.8	398.8	397.4	399.4	401.6	402.2
48.0	376.7	376.0	373.4	373.3	371.3	370.8	369.5	371.3	375.5	375.8
51.0	346.5	348.1	345.5	345.0	342.9	342.3	340.9	342.7	344.1	345.9
54.0	318.1	319.2	316.6	316.4	313.8	313.6	312.0	313.8	314.4	316.9
57.0	289.1	290.2	287.4	287.2	284.6	284.3	282.7	284.5	284.9	290.1
60.0	260.7	260.6	257.9	257.6	255.1	254.8	253.2	254.8	255.1	257.5
63.0	230.2	230.9	228.1	228.1	225.6	225.3	223.6	225.2	225.3	227.6
66.0	200.3	201.2	198.3	198.4	196.0	196.0	194.1	195.6	195.4	197.6
69.0	170.5	171.3	168.5	168.9	166.7	166.8	164.9	166.3	165.8	167.7
72.0	141.5	141.6	139.1	139.7	137.7	138.0	136.3	137.5	136.6	138.3
75.0	112.1	112.0	110.3	110.8	109.7	109.7	108.5	108.9	108.4	109.0
78.0	83.85	84.10	82.83	83.61	82.94	83.04	81.99	82.30	81.49	81.71
81.0	57.62	58.04	57.05	58.26	57.76	58.17	57.02	57.40	56.31	56.40
84.0	34.58	34.92	34.36	35.52	35.31	35.64	34.72	34.94	33.95	33.92
87.0	15.54	15.61	15.16	15.93	15.74	15.85	15.08	15.15	14.45	14.53
90.0	1.568	1.441	1.179	1.010	0.8877	0.6166	0.4679	0.5204	0.7172	0.8746
G/C	150.0	165.0	180.0	195.0	210.0	225.0	240.0	255.0	270.0	285.0
0.0	649.1	647.8	647.4	647.6	647.8	648.0	648.1	648.2	648.3	648.3
3.0	648.0	647.1	646.5	646.5	646.6	646.3	646.3	646.1	646.2	646.2
6.0	644.4	643.9	643.1	642.8	642.8	642.1	641.8	641.2	641.3	641.2
9.0	638.3	638.6	637.2	636.6	636.5	635.2	634.6	633.5	633.6	633.4
12.0	630.3	631.0	628.9	627.9	627.6	625.6	624.8	623.2	623.3	623.0
15.0	618.5	619.1	617.6	616.5	616.0	613.6	612.2	610.4	610.3	610.0
18.0	603.9	605.8	604.3	603.0	602.2	599.2	597.5	595.3	595.1	594.8
21.0	588.0	590.6	589.0	587.4	586.4	582.7	580.7	578.0	577.9	577.5
24.0	570.1	573.2	571.6	569.8	568.4	564.3	561.8	558.9	558.6	558.3
27.0	550.3	554.1	552.6	550.6	548.7	544.1	541.3	538.0	537.7	537.4
30.0	528.9	533.3	532.3	530.2	527.8	522.3	519.3	515.6	515.3	515.0
33.0	505.9	510.8	510.0	508.3	505.8	499.2	495.9	492.0	491.7	491.5
36.0	481.8	487.1	485.6	483.4	482.3	475.3	471.4	467.4	467.0	466.7
39.0	456.5	462.5	460.4	458.0	456.4	450.8	446.0	442.1	441.5	441.2
42.0	431.6	436.3	434.6	432.1	429.8	424.9	419.8	416.7	415.1	415.0
45.0	404.1	409.6	407.8	405.2	402.9	397.1	392.9	391.4	388.2	388.1
48.0	375.2	382.2	380.9	377.7	375.5	369.2	365.5	363.1	360.9	360.9
51.0	346.9	354.4	352.5	349.5	347.4	341.1	337.5	333.1	333.0	333.4
54.0	317.8	325.0	323.1	320.7	318.7	312.6	309.1	304.9	304.9	304.9
57.0	288.2	295.6	293.9	291.4	289.8	283.8	280.6	276.5	276.7	276.6
60.0	258.3	265.7	264.5	262.2	260.2	254.7	251.7	247.8	248.1	248.1
63.0	230.1	235.6	233.6	231.7	230.6	225.4	222.8	219.3	219.6	219.6
66.0	197.9	205.3	203.5	201.3	200.7	196.0	194.0	190.6	191.3	191.1
69.0	167.6	174.8	172.7	171.0	170.9	166.6	165.3	162.2	163.1	162.8
72.0	137.7	144.6	142.4	141.0	141.5	137.9	137.1	134.5	135.2	135.2
75.0	108.7	114.4	112.2	111.7	112.1	109.9	109.1	107.7	108.1	108.4
78.0	80.90	86.01	83.61	83.54	84.56	83.23	82.96	81.94	82.49	82.70
81.0	55.24	59.68	57.40	57.43	59.13	58.21	58.65	57.75	58.60	58.49
84.0	32.90	36.46	34.42	34.74	36.44	36.02	36.50	35.97	36.68	36.67
87.0	14.03	17.20	15.80	15.97	17.14	16.76	17.09	16.70	17.32	17.38
90.0	1.023	1.622	1.063	1.312	1.642	1.649	1.587	1.616	1.738	2.082
G/C	300.0	315.0	330.0	345.0						
0.0	648.7	648.9	649.1	647.8						
3.0	646.6	647.1	647.6	645.9						
6.0	641.9	642.6	643.4	641.3						
9.0	634.4	635.4	636.7	634.3						
12.0	624.3	625.8	627.6	624.9						
15.0	611.7	613.7	615.8	613.0						
18.0	596.9	599.2	601.9	599.0						
21.0	580.0	582.7	585.9	582.9						

C Range: 0 - 360DEG

C Interval: 15.0DEG

Test Speed: HIGH

Temperature: 25.3DEG

Operators: Meng yongjian

Test Date: 2018-04-08

γ Range: 0 - 90DEG

γ Interval: 1.0DEG

Test System: EVERFINE GO-2000B_V1 SYSTEM V2.0.288

Humidity: 52%

Test Distance: 5.850m [K=1.0000]

Remarks:

GONIOPHOTOMETERS SYSTEM TEST REPORT

Photometric Data Table [cd]

24.0	561.0	564.3	567.8	564.8
27.0	540.5	544.1	548.1	545.0
30.0	518.5	522.3	526.7	523.6
33.0	495.1	499.2	503.9	500.9
36.0	470.7	474.9	480.0	476.8
39.0	445.3	449.8	455.0	454.3
42.0	419.2	423.7	429.5	426.7
45.0	392.4	396.9	405.4	399.2
48.0	365.2	370.0	375.1	374.1
51.0	337.3	344.9	347.2	344.0
54.0	309.1	313.5	321.7	315.1
57.0	280.8	284.8	290.0	286.9
60.0	252.1	255.8	263.6	258.0
63.0	223.5	226.8	231.3	227.2
66.0	194.8	197.6	201.9	197.3
69.0	166.3	168.5	172.4	167.4
72.0	138.3	139.9	143.2	138.4
75.0	110.4	112.0	114.1	109.2
78.0	84.31	85.23	86.68	81.54
81.0	59.93	60.10	61.08	55.66
84.0	37.70	37.58	37.98	33.05
87.0	18.23	18.09	18.31	14.28
90.0	2.394	2.678	2.772	1.266

C Range: 0 - 360DEG
 C Interval: 15.0DEG
 Test Speed: HIGH
 Temperature: 25.3DEG
 Operators: Meng yongjian
 Test Date: 2018-04-08

γ Range: 0 - 90DEG
 γ Interval: 1.0DEG
 Test System: EVERFINE GO-2000B_V1 SYSTEM V2.0.288
 Humidity: 52%
 Test Distance: 5.850m [K=1.0000]
 Remarks: