

GONIOPHOTOMETERS SYSTEM TEST REPORT

LED FUSION Linear Series FL600-GL600-11W-830



Light Output Ratio:	100.0%	
Luminaire Power:	10.93 W	
SHR Nominal:	1.25	Calculated using the TM5
SHR Maximum:	1.35	fine grid method.

C Range: 0 - 360DEG
C Interval: 15.0DEG
Test Speed: HIGH
Temperature: 25.3DEG
Operators: Meng yongjian
Test Date: 2018-04-08

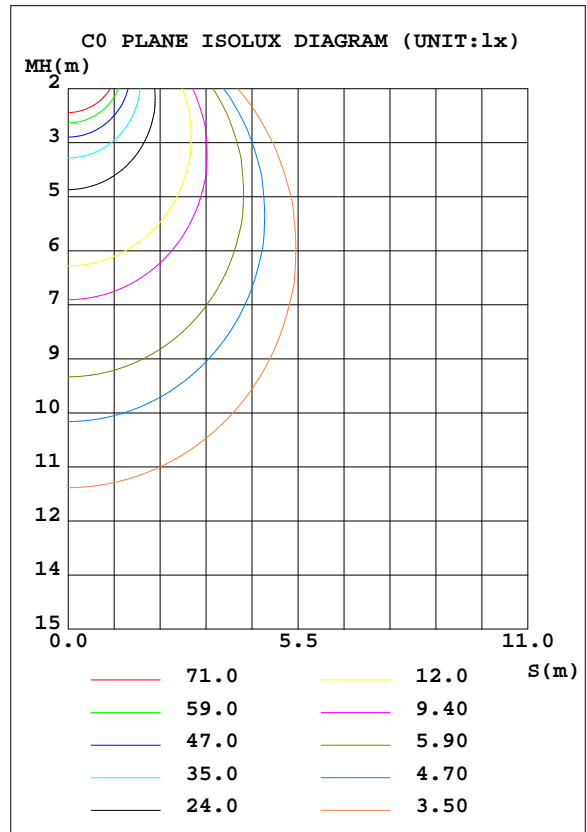
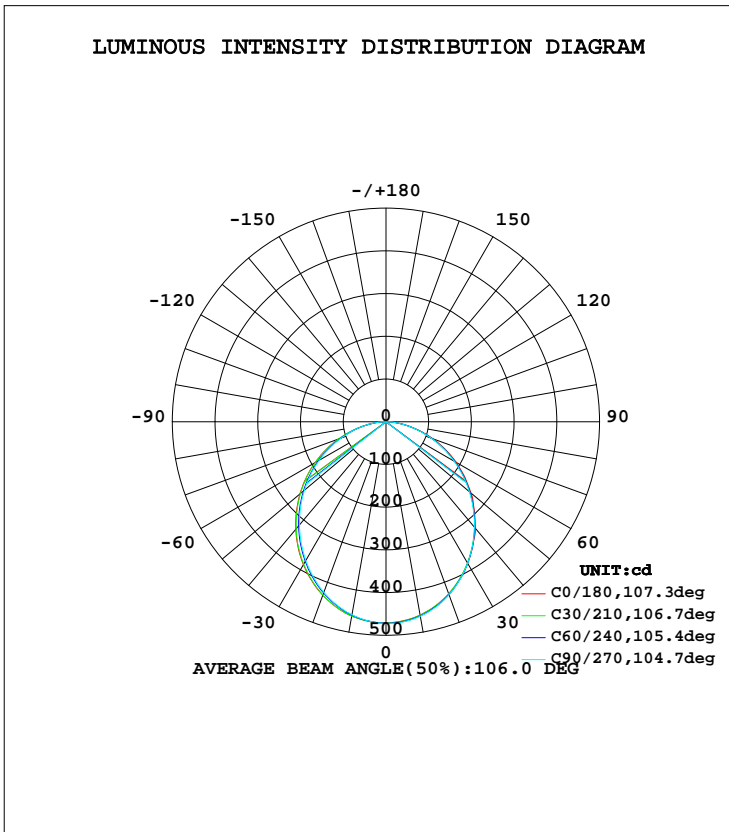
γ Range: 0 - 90DEG
 γ Interval: 1.0DEG
Test System: EVERFINE GO-2000B_V1 SYSTEM V2.0.288
Humidity: 52%
Test Distance: 5.850m [K=1.0000]
Remarks:

GONIOPHOTOMETERS SYSTEM TEST REPORT

LUMINAIRE PHOTOMETRIC TEST REPORT

Test:U:43.70V I:0.2500A P:10.93W PF:1.000 Lamp Flux:1260.77x1 lm		
NAME: FL600-GL600-11W-830	TYPE:Linear Light	SERIAL No.:
SPEC.:3000K	DIM.: L600mm*W50mm*H95mm	
MFR.: NEKO LIGHTING AG		

DATA OF LAMP		PHOTOMETRIC DATA Eff: 115.40 lm/W			
MODEL	SAMSUNG-3000K	I _{max} (cd)	472.6	S/MH(C0/180)	1.23
NOMINAL POWER(W)	11	LOR(%)	100.0	S/MH(C90/270)	1.19
RATED VOLTAGE(V)	48	TOTAL FLUX(lm)	1260.8	η UP, DN(C0-180)	0.0, 50.1
NOMINAL FLUX(lm)	1260.77	CIE CLASS	DIRECT	η UP, DN(C180-360)	0.0, 49.9
LAMPS INSIDE	1	η up(%)	0.0	CIBSE SHR NOM	1.25
TEST VOLTAGE(V)	43.7	η down(%)	100.0	CIBSE SHR MAX	1.35



C Range: 0 - 360DEG
C Interval: 15.0DEG
Test Speed: HIGH
Temperature:25.3DEG
Operators:Meng yongjian
Test Date:2018-04-08

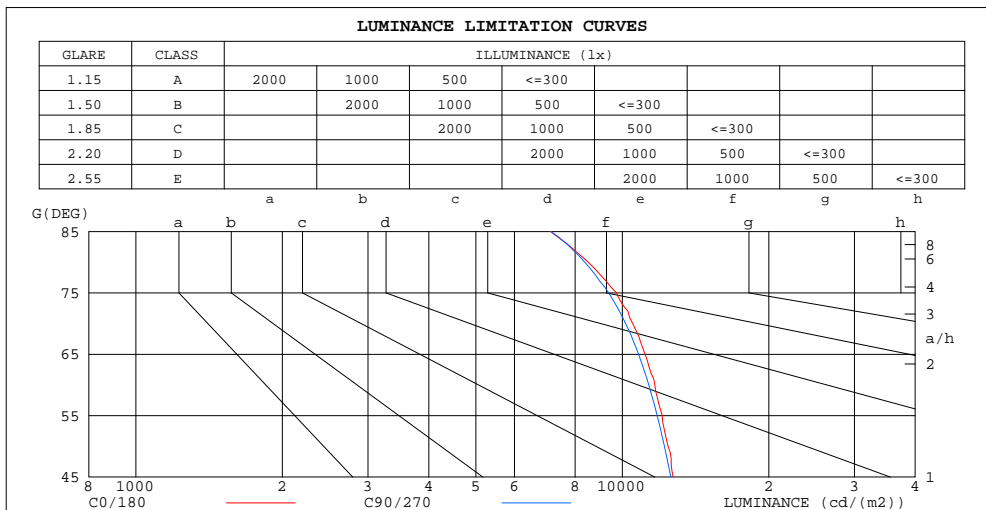
γ Range: 0 - 90DEG
γ Interval: 1.0DEG
Test System:EVERFINE GO-2000B_V1 SYSTEM V2.0.288
Humidity:52%
Test Distance:5.850m [K=1.0000]
Remarks:

GONIOPHOTOMETERS SYSTEM TEST REPORT

**ZONAL FLUX DIAGRAM
AND LUMINANCE LIMITATION CURVES**

ZONAL FLUX DIAGRAM:

γ	C0	C45	C90	C135	C180	C225	C270	C315	γ	Φ zone	Φ total	Φ lum, lamp
10	459.5	460.5	462.3	462.9	461.9	460.9	459.0	460.4	0- 10	44.52	44.52	3.53,3.53
20	428.8	429.1	430.9	432.1	432.1	429.7	425.1	428.3	10- 20	126.2	170.7	13.5,13.5
30	382.2	381.3	382.4	384.7	386.6	382.1	375.3	380.2	20- 30	187.7	358.4	28.4,28.4
40	325.3	321.8	322.1	325.3	328.6	323.7	315.1	321.2	30- 40	221.2	579.6	46,46
50	259.5	255.4	255.0	259.1	263.1	257.6	249.3	258.1	40- 50	224.3	803.9	63.8,63.8
60	189.5	184.9	184.1	187.4	192.0	187.8	180.7	186.3	50- 60	198.6	1002	79.5,79.5
70	116.8	112.8	112.9	114.2	117.7	116.8	111.6	115.9	60- 70	149.2	1152	91.3,91.3
80	48.04	46.24	47.25	46.85	47.84	50.33	48.34	49.81	70- 80	85.08	1237	98.1,98.1
90	1.144	0.6406	0.3389	0.6319	0.7718	2.099	1.264	2.029	80- 90	23.98	1261	100,100
100									90-100			
110									100-110			
120									110-120			
130									120-130			
140									130-140			
150									140-150			
160									150-160			
170									160-170			
180									170-180			
DEG	LUMINOUS INTENSITY:cd									UNIT:lm		



LUMINANCE cd/(m2)		
G(DEG)	C0/180	C90/270
85	7117	7132
80	8512	8372
75	9728	9375
70	10507	10155
65	11139	10799
60	11661	11330
55	12079	11791
50	12421	12204
45	12715	12581

C Range: 0 - 360DEG
 C Interval: 15.0DEG
 Test Speed: HIGH
 Temperature: 25.3DEG
 Operators: Meng yongjian
 Test Date: 2018-04-08

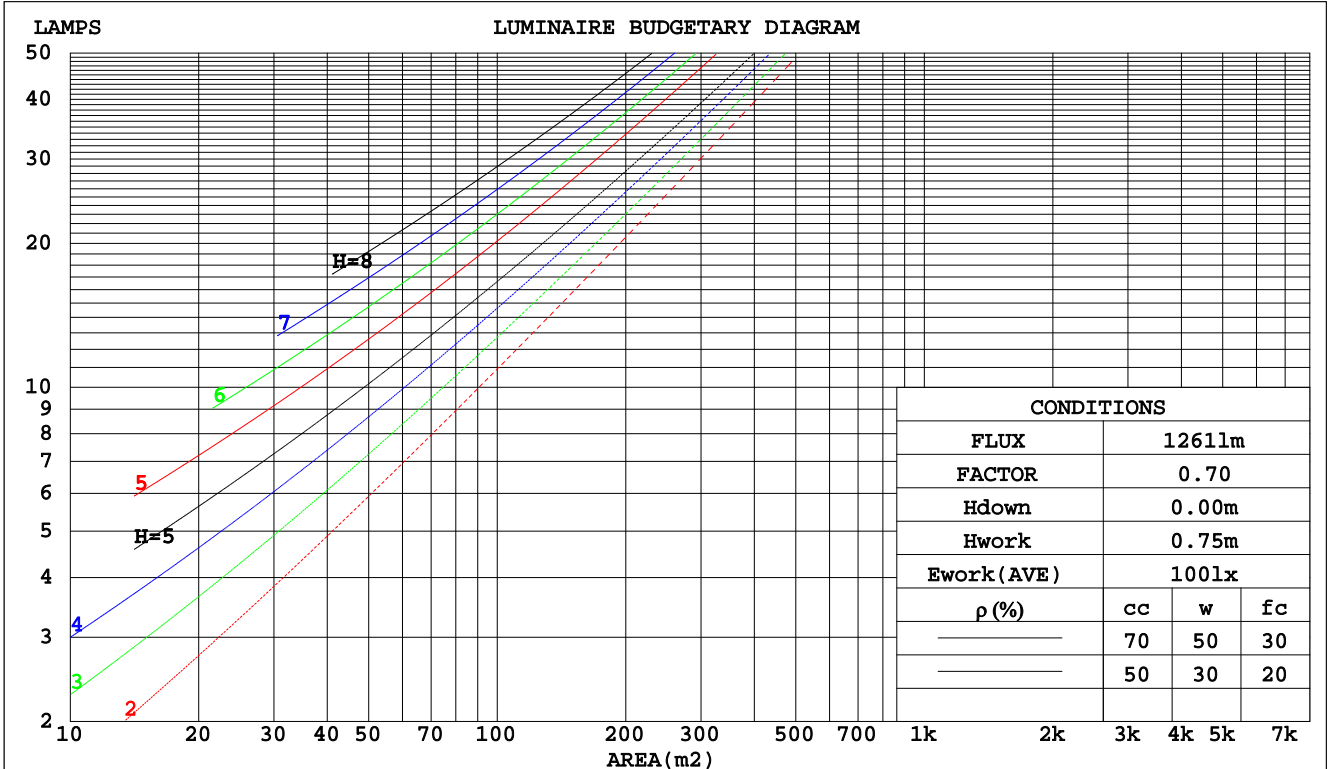
γ Range: 0 - 90DEG
 γ Interval: 1.0DEG
 Test System: EVERFINE GO-2000B_V1 SYSTEM V2.0.288
 Humidity: 52%
 Test Distance: 5.850m [K=1.0000]
 Remarks:

GONIOPHOTOMETERS SYSTEM TEST REPORT

CU AND LUMINAIRE BUDGETARY ESTIMATE DIAGRAM

Test:U:43.70V I:0.2500A P:10.93W PF:1.000 Lamp Flux:1260.77x1 lm		
NAME: FL600-GL600-11W-830	TYPE:Linear Light	SERIAL No.:
SPEC.:3000K	DIM.: L600mm*W50mm*H95mm	
MFR.: NEKO LIGHTING AG		

pcc	80%			70%			50%			30%			10%			0
	50%	30%	10%	50%	30%	10%	50%	30%	10%	50%	30%	10%	50%	30%	10%	0
pw																
pfc																
RCR	RCR:Room Cavity Ratio															
	Coefficients of Utilization(CU)															
0.0	1.19	1.19	1.19	1.16	1.16	1.16	1.11	1.11	1.11	1.06	1.06	1.06	1.02	1.02	1.02	1.00
1.0	1.04	.90	.96	1.02	.98	.94	.98	.94	.91	.94	.91	.89	.90	.88	.86	.84
2.0	.91	.84	.78	.89	.83	.77	.85	.80	.76	.82	.78	.74	.79	.75	.72	.70
3.0	.80	.72	.65	.78	.71	.65	.75	.69	.64	.73	.67	.62	.70	.65	.61	.59
4.0	.71	.62	.55	.70	.61	.55	.67	.60	.54	.65	.58	.54	.62	.57	.53	.51
5.0	.63	.54	.48	.62	.54	.48	.60	.53	.47	.58	.52	.46	.56	.51	.46	.44
6.0	.57	.48	.42	.56	.48	.42	.54	.47	.41	.53	.46	.41	.51	.45	.41	.38
7.0	.52	.43	.37	.51	.43	.37	.49	.42	.37	.48	.41	.36	.47	.41	.36	.34
8.0	.47	.39	.33	.47	.39	.33	.45	.38	.33	.44	.37	.33	.43	.37	.32	.30
9.0	.43	.35	.30	.43	.35	.30	.42	.35	.30	.41	.34	.29	.40	.34	.29	.27
10.0	.40	.32	.27	.40	.32	.27	.39	.32	.27	.38	.31	.27	.37	.31	.27	.25



C Range: 0 - 360DEG
 C Interval: 15.0DEG
 Test Speed: HIGH
 Temperature:25.3DEG
 Operators:Meng yongjian
 Test Date:2018-04-08

γ Range: 0 - 90DEG
 γ Interval: 1.0DEG
 Test System:EVERFINE GO-2000B_V1 SYSTEM V2.0.288
 Humidity:52%
 Test Distance:5.850m [K=1.0000]
 Remarks:

GONIOPHOTOMETERS SYSTEM TEST REPORT

WEC AND CCEC

Test:U:43.70V I:0.2500A P:10.93W PF:1.000 Lamp Flux:1260.77x1 lm		
NAME: FL600-GL600-11W-830	TYPE:Linear Light	SERIAL No.:
SPEC.:3000K	DIM.: L600mm*W50mm*H95mm	
MFR.: NEKO LIGHTING AG		

ρcc	80%			70%			50%			30%			10%			0
ρw	50%	30%	10%	50%	30%	10%	50%	30%	10%	50%	30%	10%	50%	30%	10%	0
ρfc	20%			20%			20%			20%			20%			0
RCR	RCR:Room Cavity Ratio						Wall Exitance Coefficients(WEC)									
0.0																
1.0	.306	.174	.055	.299	.171	.054	.286	.164	.052	.274	.158	.051	.262	.152	.049	
2.0	.288	.158	.048	.282	.155	.048	.270	.150	.047	.260	.146	.046	.250	.141	.045	
3.0	.267	.142	.043	.261	.140	.042	.251	.136	.041	.241	.132	.041	.233	.129	.040	
4.0	.246	.128	.038	.242	.126	.037	.232	.123	.037	.224	.120	.036	.216	.117	.036	
5.0	.228	.116	.034	.224	.115	.033	.216	.112	.033	.208	.110	.033	.201	.107	.032	
6.0	.212	.106	.030	.208	.105	.030	.201	.103	.030	.194	.101	.030	.187	.099	.029	
7.0	.197	.097	.028	.194	.096	.027	.187	.095	.027	.181	.093	.027	.175	.091	.027	
8.0	.184	.090	.025	.181	.089	.025	.175	.088	.025	.170	.086	.025	.165	.085	.025	
9.0	.173	.084	.023	.170	.083	.023	.165	.081	.023	.160	.080	.023	.155	.079	.023	
10.0	.162	.078	.022	.160	.077	.022	.155	.076	.021	.151	.075	.021	.147	.074	.021	

ρcc	80%			70%			50%			30%			10%			0
ρw	50%	30%	10%	50%	30%	10%	50%	30%	10%	50%	30%	10%	50%	30%	10%	0
ρfc	20%			20%			20%			20%			20%			0
RCR	RCR:Room Cavity Ratio						Ceiling Cavity Exitance Coefficients(CCEC)									
0.0	.190	.190	.190	.163	.163	.163	.111	.111	.111	.064	.064	.064	.020	.020	.020	
1.0	.180	.156	.135	.154	.134	.116	.105	.092	.080	.061	.053	.047	.019	.017	.015	
2.0	.172	.132	.098	.147	.114	.085	.101	.079	.059	.058	.046	.035	.019	.015	.011	
3.0	.164	.114	.075	.140	.099	.065	.096	.068	.045	.056	.040	.027	.018	.013	.009	
4.0	.156	.101	.059	.134	.087	.051	.092	.061	.036	.053	.036	.021	.017	.012	.007	
5.0	.149	.090	.048	.128	.078	.041	.088	.055	.029	.051	.032	.017	.016	.010	.006	
6.0	.142	.082	.039	.122	.071	.034	.084	.050	.024	.049	.029	.014	.016	.010	.005	
7.0	.135	.075	.033	.116	.065	.029	.080	.046	.021	.047	.027	.012	.015	.009	.004	
8.0	.128	.069	.029	.110	.060	.025	.076	.042	.018	.044	.025	.011	.014	.008	.004	
9.0	.122	.064	.025	.105	.056	.022	.073	.039	.016	.043	.023	.009	.014	.008	.003	
10.0	.117	.060	.023	.101	.052	.020	.070	.037	.014	.041	.022	.008	.013	.007	.003	

C Range: 0 - 360DEG
 C Interval: 15.0DEG
 Test Speed: HIGH
 Temperature:25.3DEG
 Operators:Meng yongjian
 Test Date:2018-04-08

γ Range: 0 - 90DEG
 γ Interval: 1.0DEG
 Test System:EVERFINE GO-2000B_V1 SYSTEM V2.0.288
 Humidity:52%
 Test Distance:5.850m [K=1.0000]
 Remarks:

GONIOPHOTOMETERS SYSTEM TEST REPORT

UGR(Unified Glare Rating) Table

Test:U:43.70V I:0.2500A P:10.93W PF:1.000 Lamp Flux:1260.77x1 lm		
NAME: FL600-GL600-11W-830	TYPE:Linear Light	SERIAL No.:
SPEC.:3000K	DIM.: L600mm*W50mm*H95mm	
MFR.: NEKO LIGHTING AG		

ceiling/cavity	0.7	0.7	0.5	0.5	0.3	0.7	0.7	0.5	0.5	0.3
walls	0.5	0.3	0.5	0.3	0.3	0.5	0.3	0.5	0.3	0.3
working plane	0.2	0.2	0.2	0.2	0.2	0.2	0.2	0.2	0.2	0.2
Room dimensions	Viewed crosswise					Viewed endwise				
x = 2H y = 2H	21.4	22.9	21.7	23.1	23.3	21.4	22.9	21.6	23.1	23.3
3H	22.9	24.3	23.2	24.5	24.8	22.8	24.2	23.1	24.4	24.7
4H	23.5	24.8	23.8	25.1	25.3	23.4	24.7	23.7	25.0	25.2
6H	23.9	25.2	24.2	25.4	25.7	23.8	25.0	24.1	25.3	25.6
8H	24.0	25.2	24.4	25.5	25.8	23.9	25.1	24.3	25.4	25.7
12H	24.1	25.3	24.4	25.6	25.9	24.0	25.2	24.4	25.5	25.8
4H 2H	22.0	23.3	22.3	23.6	23.8	22.0	23.3	22.3	23.5	23.8
3H	23.7	24.8	24.0	25.1	25.4	23.6	24.8	23.9	25.0	25.3
4H	24.4	25.4	24.7	25.7	26.1	24.3	25.4	24.7	25.7	26.0
6H	24.9	25.8	25.3	26.2	26.6	24.8	25.8	25.2	26.1	26.5
8H	25.1	25.9	25.5	26.3	26.7	25.0	25.9	25.4	26.3	26.6
12H	25.2	26.0	25.6	26.4	26.8	25.1	25.9	25.6	26.3	26.7
8H 4H	24.6	25.5	25.0	25.9	26.2	24.5	25.4	25.0	25.8	26.2
6H	25.3	26.0	25.7	26.4	26.8	25.2	26.0	25.7	26.4	26.8
8H	25.5	26.2	26.0	26.6	27.0	25.5	26.1	26.0	26.6	27.0
12H	25.7	26.3	26.2	26.7	27.2	25.7	26.3	26.2	26.7	27.2
12H 4H	24.6	25.4	25.0	25.8	26.2	24.6	25.4	25.0	25.7	26.1
6H	25.3	26.0	25.8	26.4	26.8	25.3	25.9	25.7	26.4	26.8
8H	25.6	26.2	26.1	26.6	27.1	25.6	26.1	26.1	26.6	27.1
Variations with the observer position at spacings:										
S = 1.0H	+ 0.2 / - 0.2					+ 0.2 / - 0.2				
1.5H	+ 0.2 / - 0.3					+ 0.2 / - 0.3				
2.0H	+ 0.2 / - 0.2					+ 0.2 / - 0.3				

CIE Pub.117 Corrected 1261 lm Total Lamp Luminous Flux.(8log(F/F0) = 0.8)

C Range: 0 - 360DEG
 C Interval: 15.0DEG
 Test Speed: HIGH
 Temperature:25.3DEG
 Operators:Meng yongjian
 Test Date:2018-04-08

γ Range: 0 - 90DEG
 γ Interval: 1.0DEG
 Test System:EVERFINE GO-2000B_V1 SYSTEM V2.0.288
 Humidity:52%
 Test Distance:5.850m [K=1.0000]
 Remarks:

GONIOPHOTOMETERS SYSTEM TEST REPORT

UTILIZATION FACTORS TABLE

Test:U:43.70V I:0.2500A P:10.93W PF:1.000 Lamp Flux:1260.77x1 lm		
NAME: FL600-GL600-11W-830	TYPE:Linear Light	SERIAL No.:
SPEC.:3000K	DIM.: L600mm*W50mm*H95mm	
MFR.: NEKO LIGHTING AG		

REFLECTANCE										
Ceiling	0.8	0.8	0.8	0.7	0.7	0.7	0.5	0.5	0.5	0
Walls	0.7	0.5	0.3	0.7	0.5	0.3	0.7	0.5	0.3	0
Working plane	0.2	0.2	0.2	0.2	0.2	0.2	0.2	0.2	0.2	0
ROOM INDEX	UTILIZATION FACTORS(PERCENT) $k(RI) \times RCR = 5$									
k = 0.60	58	47	40	58	47	40	56	46	40	33
0.80	68	57	50	67	56	49	66	56	49	42
1.00	77	66	58	75	65	58	73	66	58	51
1.25	84	73	66	82	73	66	80	71	65	58
1.50	89	79	72	87	78	71	84	76	70	63
2.00	95	87	81	94	86	80	90	84	78	71
2.50	99	92	86	97	90	85	93	87	83	75
3.00	102	96	90	100	94	89	96	91	87	79
4.00	106	101	96	104	99	95	100	96	92	83
5.00	109	104	100	106	102	98	102	98	95	86
ROOM INDEX	UF(total)									Direct
According to DIN EN 13032-2 2004			Suspended				SHRNOM = 1.25			

C Range: 0 - 360DEG
 C Interval: 15.0DEG
 Test Speed: HIGH
 Temperature:25.3DEG
 Operators:Meng yongjian
 Test Date:2018-04-08

γ Range: 0 - 90DEG
 γ Interval: 1.0DEG
 Test System:EVERFINE GO-2000B_V1 SYSTEM V2.0.288
 Humidity:52%
 Test Distance:5.850m [K=1.0000]
 Remarks:

GONIOPHOTOMETERS SYSTEM TEST REPORT

ISOCANDELA DIAGRAM

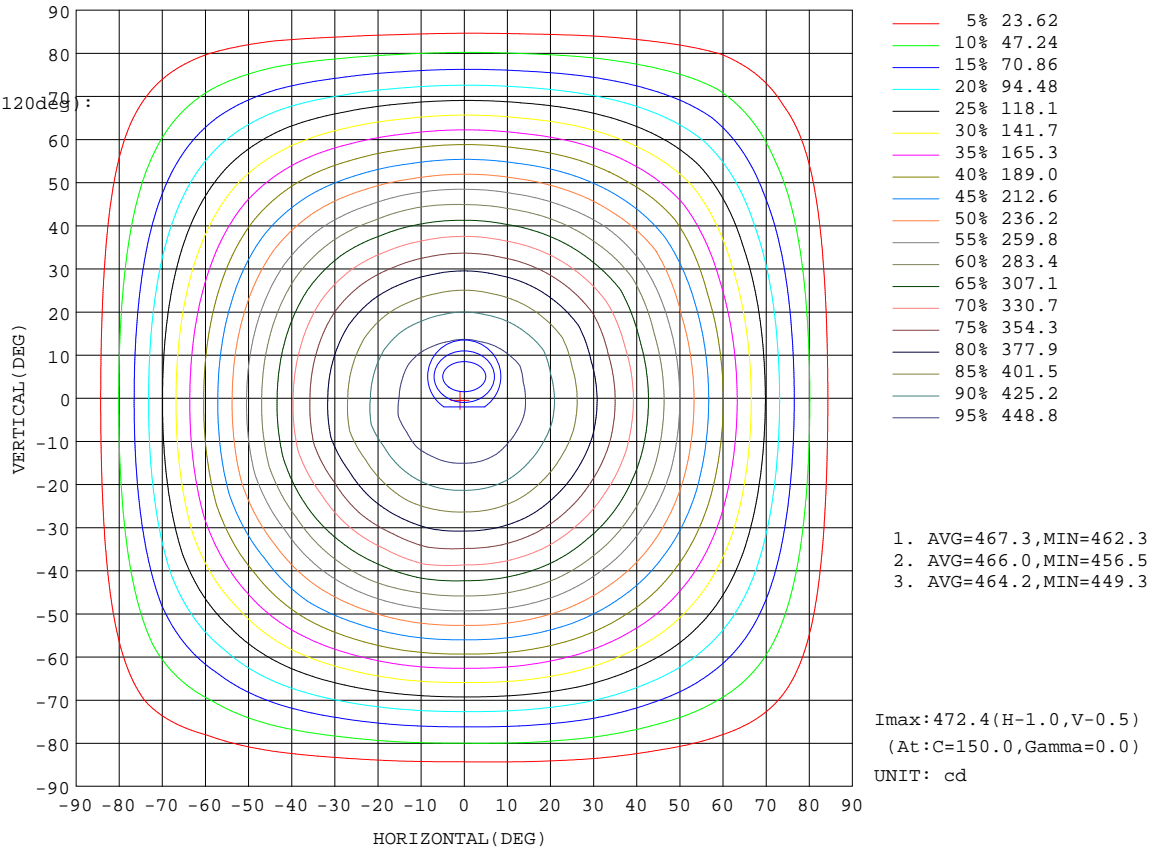
Test:U:43.70V I:0.2500A P:10.93W PF:1.000 Lamp Flux:1260.77x1 lm		
NAME: FL600-GL600-11W-830	TYPE:Linear Light	SERIAL No.:
SPEC.:3000K	DIM.: L600mm*W50mm*H95mm	
MFR.: NEKO LIGHTING AG		

Conical surface Flux(90deg):

693.28 lm
%lum = 55.0%
%lamp = 55.0%

Conical surface Flux(120deg):

1002.5 lm
%lum = 79.5%
%lamp = 79.5%



C Range: 0 - 360DEG
C Interval: 15.0DEG
Test Speed: HIGH
Temperature: 25.3DEG
Operators: Meng yongjian
Test Date: 2018-04-08

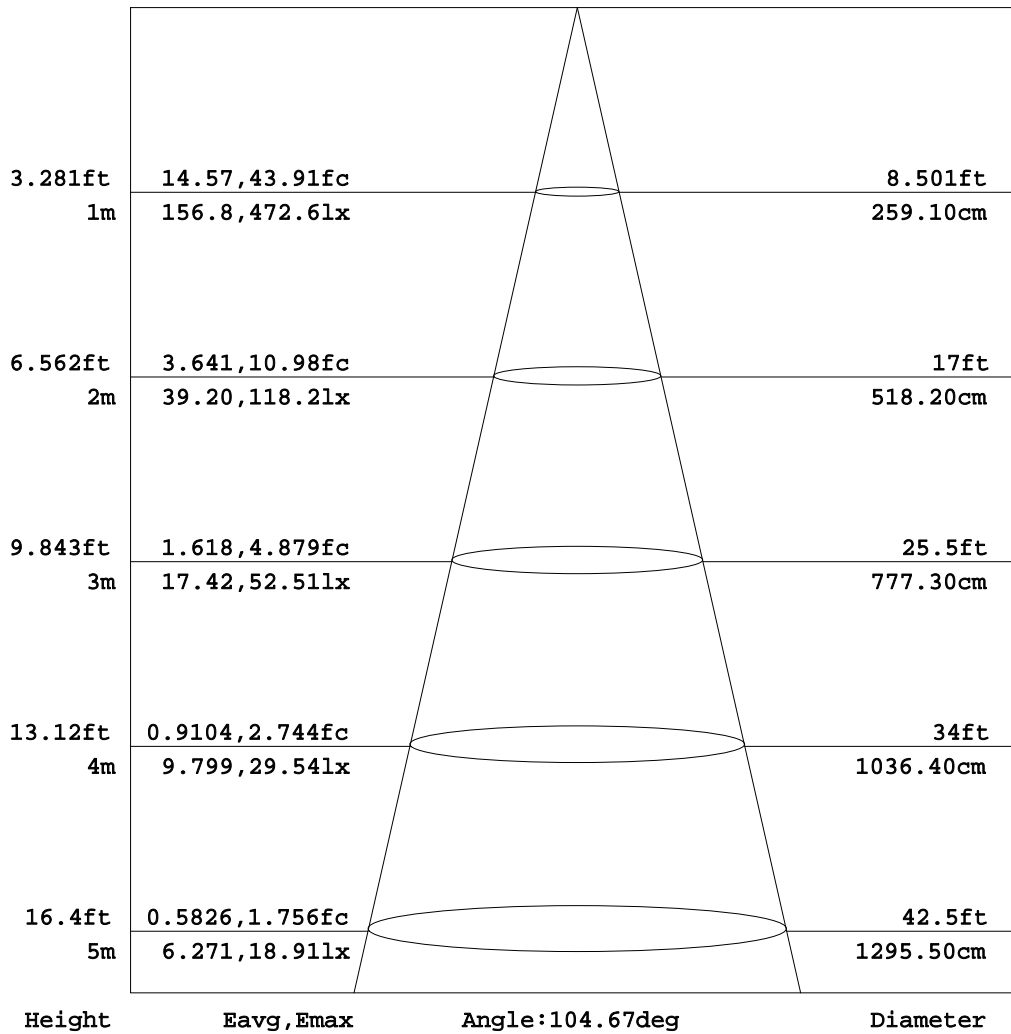
γ Range: 0 - 90DEG
γ Interval: 1.0DEG
Test System: EVERFINE GO-2000B_V1 SYSTEM V2.0.288
Humidity: 52%
Test Distance: 5.850m [K=1.0000]
Remarks:

GONIOPHOTOMETERS SYSTEM TEST REPORT

AAI Figure

Test:U:43.70V I:0.2500A P:10.93W PF:1.000 Lamp Flux:1260.77x1 lm		
NAME: FL600-GL600-11W-830	TYPE:Linear Light	SERIAL No.:
SPEC.:3000K	DIM.: L600mm*W50mm*H95mm	
MFR.: NEKO LIGHTING AG		

Flux out:867.4 lm



Note:The Curves indicate the illuminated area and the average illumination when the luminaire is at different distance.

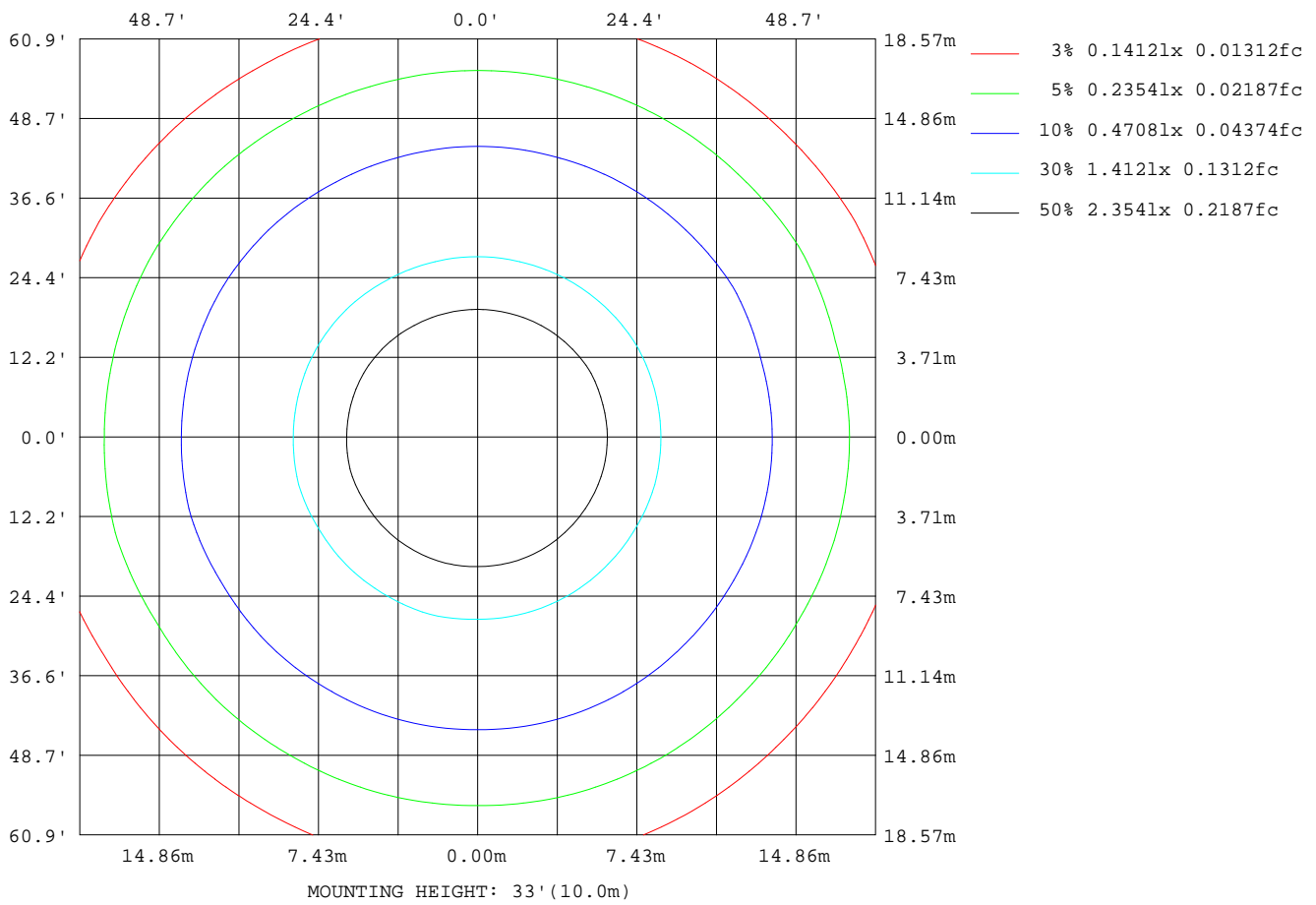
C Range: 0 - 360DEG
C Interval: 15.0DEG
Test Speed: HIGH
Temperature:25.3DEG
Operators:Meng yongjian
Test Date:2018-04-08

γ Range: 0 - 90DEG
γ Interval: 1.0DEG
Test System:EVERFINE GO-2000B_V1 SYSTEM V2.0.288
Humidity:52%
Test Distance:5.850m [K=1.0000]
Remarks:

GONIOPHOTOMETERS SYSTEM TEST REPORT

ISOLUX DIAGRAM

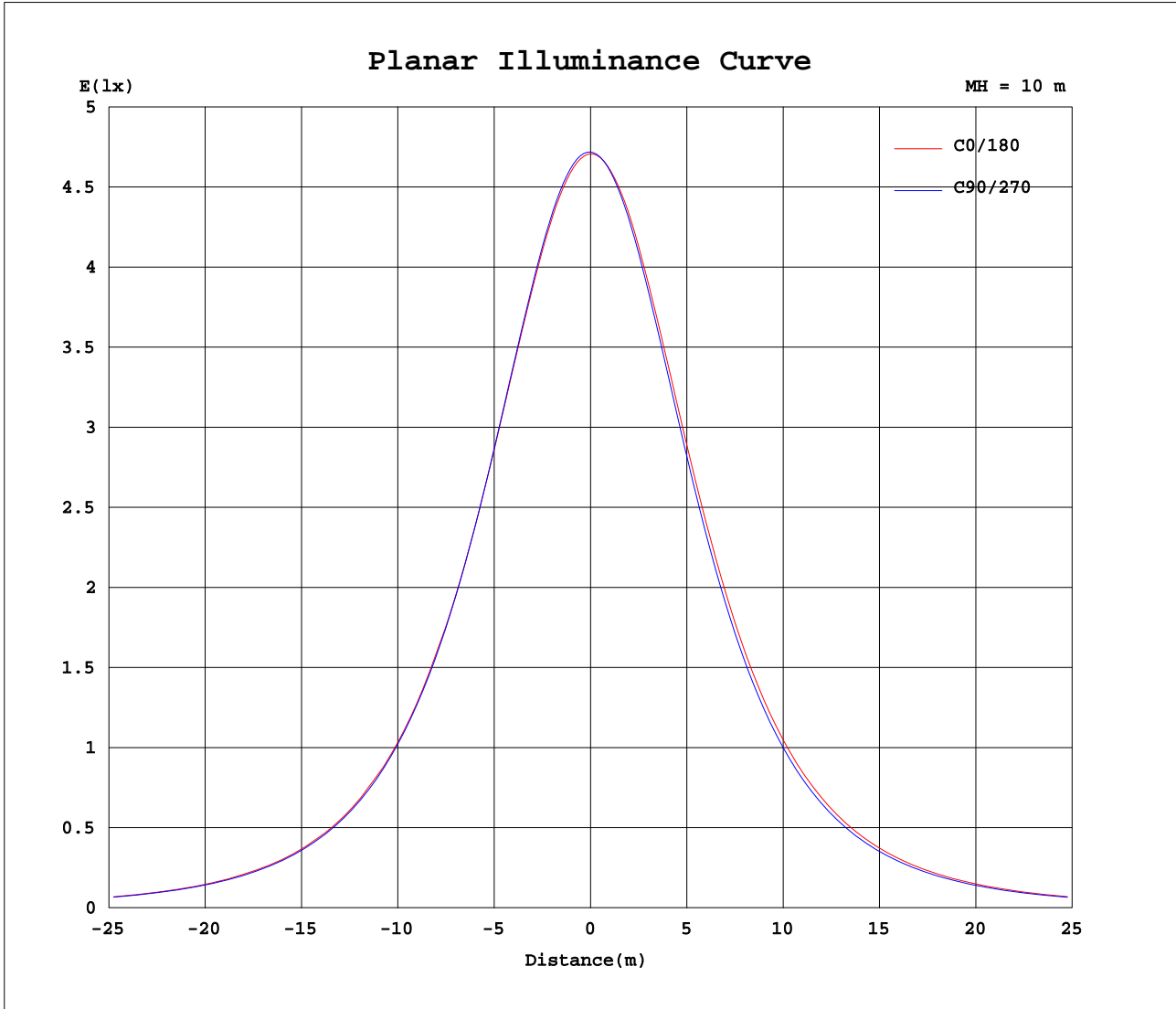
Test:U:43.70V I:0.2500A P:10.93W PF:1.000 Lamp Flux:1260.77x1 lm		
NAME: FL600-GL600-11W-830	TYPE:Linear Light	SERIAL No.:
SPEC.:3000K	DIM.: L600mm*W50mm*H95mm	
MFR.: NEKO LIGHTING AG		



C Range: 0 - 360DEG
 C Interval: 15.0DEG
 Test Speed: HIGH
 Temperature:25.3DEG
 Operators:Meng yongjian
 Test Date:2018-04-08

γ Range: 0 - 90DEG
 γ Interval: 1.0DEG
 Test System:EVERFINE GO-2000B_V1 SYSTEM V2.0.288
 Humidity:52%
 Test Distance:5.850m [K=1.0000]
 Remarks:

Planar Illuminance Curve



C Range: 0 - 360DEG
 C Interval: 15.0DEG
 Test Speed: HIGH
 Temperature: 25.3DEG
 Operators: Meng yongjian
 Test Date: 2018-04-08

γ Range: 0 - 90DEG
 γ Interval: 1.0DEG
 Test System: EVERFINE GO-2000B_V1 SYSTEM V2.0.288
 Humidity: 52%
 Test Distance: 5.850m [K=1.0000]
 Remarks:

GONIOPHOTOMETERS SYSTEM TEST REPORT

LUMINOUS DISTRIBUTION INTENSITY DATA

Test:U:43.70V I:0.2500A P:10.93W PF:1.000 Lamp Flux:1260.77x1 lm		
NAME: FL600-GL600-11W-830	TYPE:Linear Light	SERIAL No.:
SPEC.:3000K	DIM.: L600mm*W50mm*H95mm	
MFR.: NEKO LIGHTING AG		

Table--1

UNIT: cd

C(DEG) γ (DEG)	0	15	30	45	60	75	90	105	120	135	150	165	180	195	210	225	240	255	270
0	471	471	471	472	472	472	472	472	472	472	473	472	471	471	471	472	472	472	472
5	468	468	468	469	470	470	470	470	470	470	470	470	469	469	469	469	468	468	468
10	459	460	460	461	462	462	462	463	463	463	463	464	462	461	462	461	460	459	459
15	446	447	447	447	449	449	449	450	450	451	450	451	449	449	449	448	446	444	444
20	429	429	429	429	431	431	431	432	432	432	432	435	432	432	432	430	427	425	425
25	407	408	407	407	408	409	408	409	411	410	410	414	411	410	410	408	404	402	402
30	382	383	381	381	383	383	382	384	384	385	385	389	387	386	385	382	378	375	375
35	354	355	353	353	354	354	353	357	355	357	356	362	359	358	358	354	349	346	346
40	325	326	322	322	323	323	322	327	324	325	326	332	329	328	327	324	318	316	315
45	292	292	290	289	290	290	289	291	292	293	294	299	296	296	295	291	286	285	283
50	259	260	256	255	257	256	255	256	258	259	259	266	263	262	261	258	252	249	249
55	225	224	221	220	221	221	220	221	222	223	224	230	228	227	227	223	218	215	215
60	189	189	186	185	186	186	184	185	186	187	188	194	192	191	191	188	183	180	181
65	153	153	150	149	150	150	148	149	149	151	151	158	155	155	155	152	148	146	146
70	117	116	114	113	114	114	113	113	113	114	114	120	118	118	118	117	113	111	112
75	81.8	80.5	78.5	78.2	80.1	79.8	78.9	79.2	78.8	79.2	78.8	83.9	81.5	82.1	83.3	82.4	79.2	78.3	78.8
80	48.0	47.5	45.9	46.2	48.1	48.2	47.2	47.5	46.7	46.8	45.9	50.1	47.8	48.7	50.6	50.3	48.2	47.7	48.3
85	20.2	19.7	18.8	19.1	20.8	21.0	20.2	20.3	19.6	19.6	18.9	21.9	20.1	21.0	22.8	23.0	21.4	21.2	21.8
90	1.14	0.89	0.77	0.64	0.72	0.46	0.34	0.37	0.52	0.63	0.75	1.29	0.77	1.20	1.82	2.10	1.09	1.15	1.26

C Range: 0 - 360DEG
 C Interval: 15.0DEG
 Test Speed: HIGH
 Temperature:25.3DEG
 Operators:Meng yongjian
 Test Date:2018-04-08

γ Range: 0 - 90DEG
 γ Interval: 1.0DEG
 Test System:EVERFINE GO-2000B_V1 SYSTEM V2.0.288
 Humidity:52%
 Test Distance:5.850m [K=1.0000]
 Remarks:

GONIOPHOTOMETERS SYSTEM TEST REPORT

LUMINOUS DISTRIBUTION INTENSITY DATA

Test:U:43.70V I:0.2500A P:10.93W PF:1.000 Lamp Flux:1260.77x1 lm		
NAME: FL600-GL600-11W-830	TYPE:Linear Light	SERIAL No.:
SPEC.:3000K	DIM.: L600mm*W50mm*H95mm	
MFR.: NEKO LIGHTING AG		

Table--2

UNIT: cd

C(DEG) γ (DEG)	285	300	315	330	345															
0	472	472	472	473	472															
5	468	469	469	470	468															
10	459	460	460	462	460															
15	444	445	447	449	446															
20	425	427	428	431	428															
25	402	404	406	409	406															
30	375	378	380	384	381															
35	346	349	352	356	353															
40	315	318	321	325	325															
45	283	286	289	296	290															
50	250	253	258	260	259															
55	215	218	221	226	222															
60	181	184	186	192	187															
65	146	149	151	154	152															
70	112	114	116	118	115															
75	79.0	80.6	81.7	83.4	79.1															
80	48.4	49.5	49.8	50.8	46.2															
85	21.9	22.6	22.5	22.8	18.9															
90	1.55	1.80	2.03	2.11	0.91															

C Range: 0 - 360DEG
 C Interval: 15.0DEG
 Test Speed: HIGH
 Temperature:25.3DEG
 Operators:Meng yongjian
 Test Date:2018-04-08

γ Range: 0 - 90DEG
 γ Interval: 1.0DEG
 Test System:EVERFINE GO-2000B_V1 SYSTEM V2.0.288
 Humidity:52%
 Test Distance:5.850m [K=1.0000]
 Remarks:

GONIOPHOTOMETERS SYSTEM TEST REPORT

Photometric Data Table [cd]

24.0	408.6	410.8	413.6	411.0
27.0	393.7	396.1	399.3	396.5
30.0	377.6	380.2	383.7	380.9
33.0	360.7	363.4	367.1	364.2
36.0	342.9	345.8	349.7	346.8
39.0	324.5	327.5	331.5	330.0
42.0	305.4	308.5	312.9	310.5
45.0	286.0	289.0	295.7	290.2
48.0	266.2	269.3	273.4	271.1
51.0	245.7	251.4	253.0	250.3
54.0	225.3	228.4	234.6	229.0
57.0	204.7	207.4	211.4	208.7
60.0	183.7	186.3	192.2	186.8
63.0	162.9	165.2	168.7	165.0
66.0	142.1	143.9	147.2	143.3
69.0	120.8	122.7	125.3	121.4
72.0	100.4	102.0	104.1	100.3
75.0	80.58	81.69	83.35	79.11
78.0	61.54	62.05	63.34	58.83
81.0	43.75	43.90	44.72	40.21
84.0	27.55	27.51	27.86	23.83
87.0	13.38	13.27	13.50	10.20
90.0	1.795	2.029	2.110	0.9096

C Range: 0 - 360DEG
 C Interval: 15.0DEG
 Test Speed: HIGH
 Temperature: 25.3DEG
 Operators: Meng yongjian
 Test Date: 2018-04-08

γ Range: 0 - 90DEG
 γ Interval: 1.0DEG
 Test System: EVERFINE GO-2000B_V1 SYSTEM V2.0.288
 Humidity: 52%
 Test Distance: 5.850m [K=1.0000]
 Remarks: