

LED Ceiling Light GAME-600-46W-930



Light Output Ratio:	100.0%	
Luminaire Power:	49.13 W	
SHR Nominal:	1.25	Calculated using the TM5
SHR Maximum:	1.35	fine grid method.

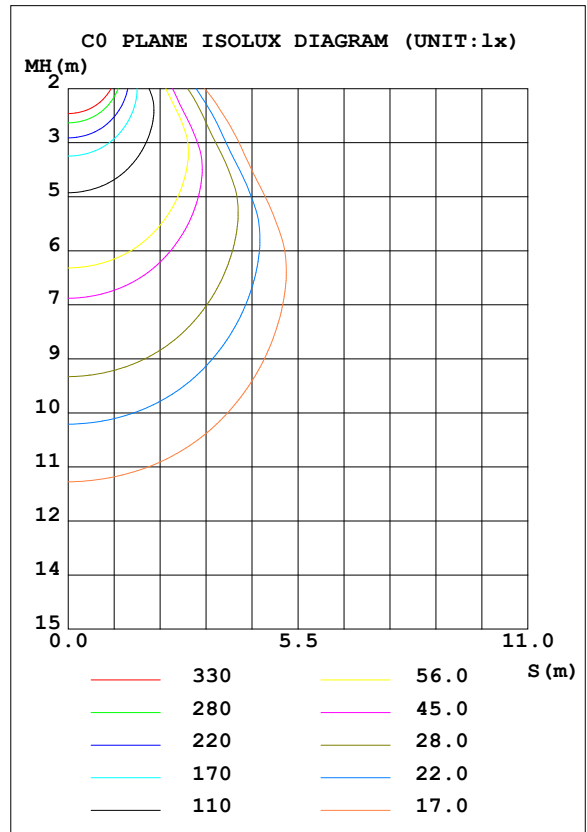
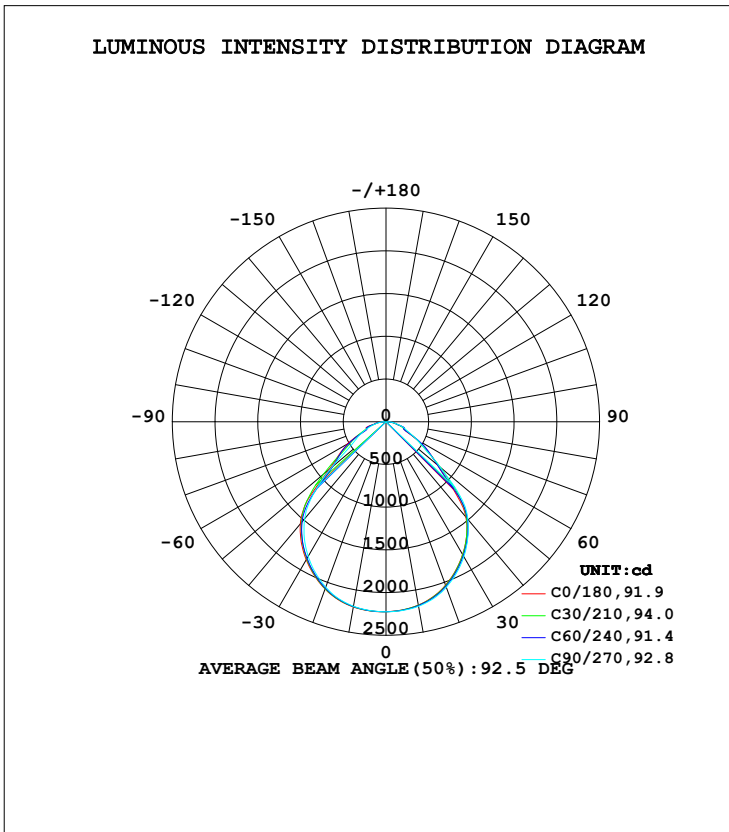
C Range: 0 - 360DEG
 C Interval: 15.0DEG
 Test Speed: HIGH
 Temperature: 25.3DEG
 Operators: Jason
 Test Date: 2020-06-17

γ Range: 0 - 90DEG
 γ Interval: 1.0DEG
 Test System: EVERFINE GO-2000B_V1 SYSTEM V2.0.362
 Humidity: 58%
 Test Distance: 5.850m [K=1.0000]
 Remarks:

LUMINAIRE PHOTOMETRIC TEST REPORT

Test:U:220.5V I:0.2273A P:49.13W PF:0.9255 Freq:49.90Hz Lamp Flux:4754.97x1 lm		
NAME: GAME-600-46W-930	TYPE:Ceiling light	SERIAL No.:
SPEC.:3000K	DIM.: φ600mm*H78mm	
MFR.: NEKO LIGHTING AG		

DATA OF LAMP		PHOTOMETRIC DATA Eff: 96.79 lm/W			
MODEL	OSRAM-3000K	I _{max} (cd)	2225	S/MH (C0/180)	1.24
NOMINAL POWER (W)	40	LOR (%)	100.0	S/MH (C90/270)	1.22
RATED VOLTAGE (V)	220	TOTAL FLUX (lm)	4755.0	η UP, DN (C0-180)	0.0,49.6
NOMINAL FLUX (lm)	4754.97	CIE CLASS	DIRECT	η UP, DN (C180-360)	0.0,50.4
LAMPS INSIDE	1	η up (%)	0.0	CIBSE SHR NOM	1.25
TEST VOLTAGE (V)	220	η down (%)	100.0	CIBSE SHR MAX	1.35



C Range: 0 - 360DEG
C Interval: 15.0DEG
Test Speed: HIGH
Temperature: 25.3DEG
Operators: Jason
Test Date: 2020-06-17

γ Range: 0 - 90DEG
γ Interval: 1.0DEG
Test System: EVERFINE GO-2000B_V1 SYSTEM V2.0.362
Humidity: 58%
Test Distance: 5.850m [K=1.0000]
Remarks:

ZONAL FLUX DIAGRAM

ZONAL FLUX DIAGRAM:

γ	C0	C45	C90	C135	C180	C225	C270	C315	γ	Φ zone	Φ total	%lum,lamp
10	2179	2184	2193	2198	2201	2196	2193	2188	0- 10	210.8	210.8	4.43,4.43
20	2037	2048	2063	2074	2084	2076	2061	2047	10- 20	603.6	814.4	17.1,17.1
30	1794	1812	1823	1842	1867	1850	1822	1802	20- 30	899.4	1714	36,36
40	1456	1476	1490	1511	1559	1536	1481	1453	30- 40	1045	2759	58,58
50	787.3	752.6	828.0	880.2	871.4	823.7	827.2	779.0	40- 50	906.6	3666	77.1,77.1
60	416.2	458.3	421.6	404.0	520.4	516.9	402.2	400.0	50- 60	531.1	4197	88.3,88.3
70	226.6	245.7	233.6	234.4	244.6	254.4	234.6	217.9	60- 70	310.7	4507	94.8,94.8
80	107.5	116.8	109.1	110.1	126.3	134.5	108.4	101.9	70- 80	184.6	4692	98.7,98.7
90	0.7822	0.7728	0.7677	3.719	9.874	4.816	0.6386	0.6421	80- 90	63.05	4755	100,100
100									90-100			
110									100-110			
120									110-120			
130									120-130			
140									130-140			
150									140-150			
160									150-160			
170									160-170			
180									170-180			
DEG	LUMINOUS INTENSITY:cd									UNIT:lm		

Conical surface Flux(90deg): 3263.6 lm

%lum = 68.6%
%lamp = 68.6%

Conical surface Flux(120deg): 4196.6 lm

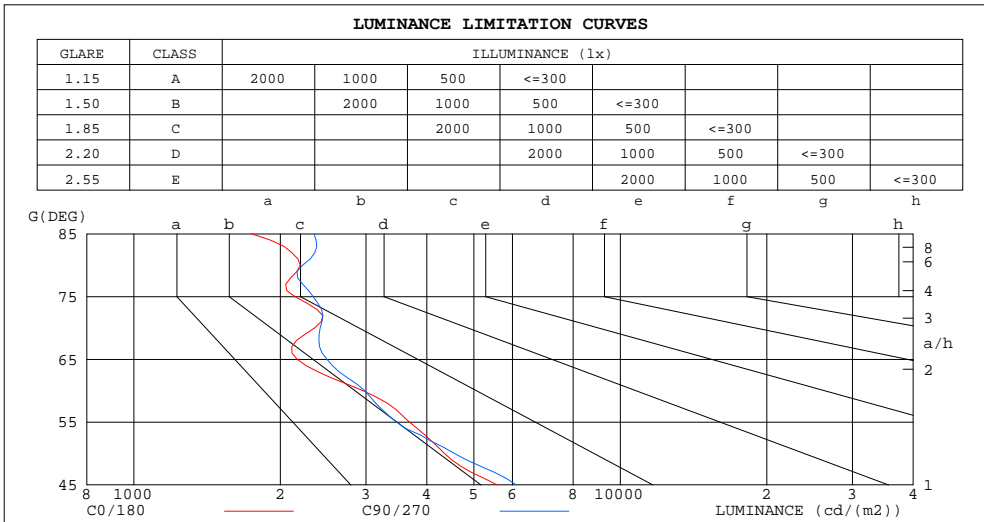
%lum = 88.3%
%lamp = 88.3%

C Range: 0 - 360DEG
C Interval: 15.0DEG
Test Speed: HIGH
Temperature:25.3DEG
Operators:Jason
Test Date:2020-06-17

γ Range: 0 - 90DEG
γ Interval: 1.0DEG
Test System:EVERFINE GO-2000B_V1 SYSTEM V2.0.362
Humidity:58%
Test Distance:5.850m [K=1.0000]
Remarks:

LUMINANCE LIMITATION CURVES

Test:U:220.5V I:0.2273A P:49.13W PF:0.9255 Freq:49.90Hz Lamp Flux:4754.97x1 lm		
NAME: GAME-600-46W-930	TYPE:Ceiling light	SERIAL No.:
SPEC.:3000K	DIM.: φ600mm*H78mm	
MFR.: NEKO LIGHTING AG		



LUMINANCE cd/(m2)		
G(DEG)	C0/180	C90/270
85	1746	2347
80	2197	2222
75	2141	2337
70	2353	2416
65	2166	2494
60	2956	2982
55	3683	3466
50	4350	4557
45	5581	6111

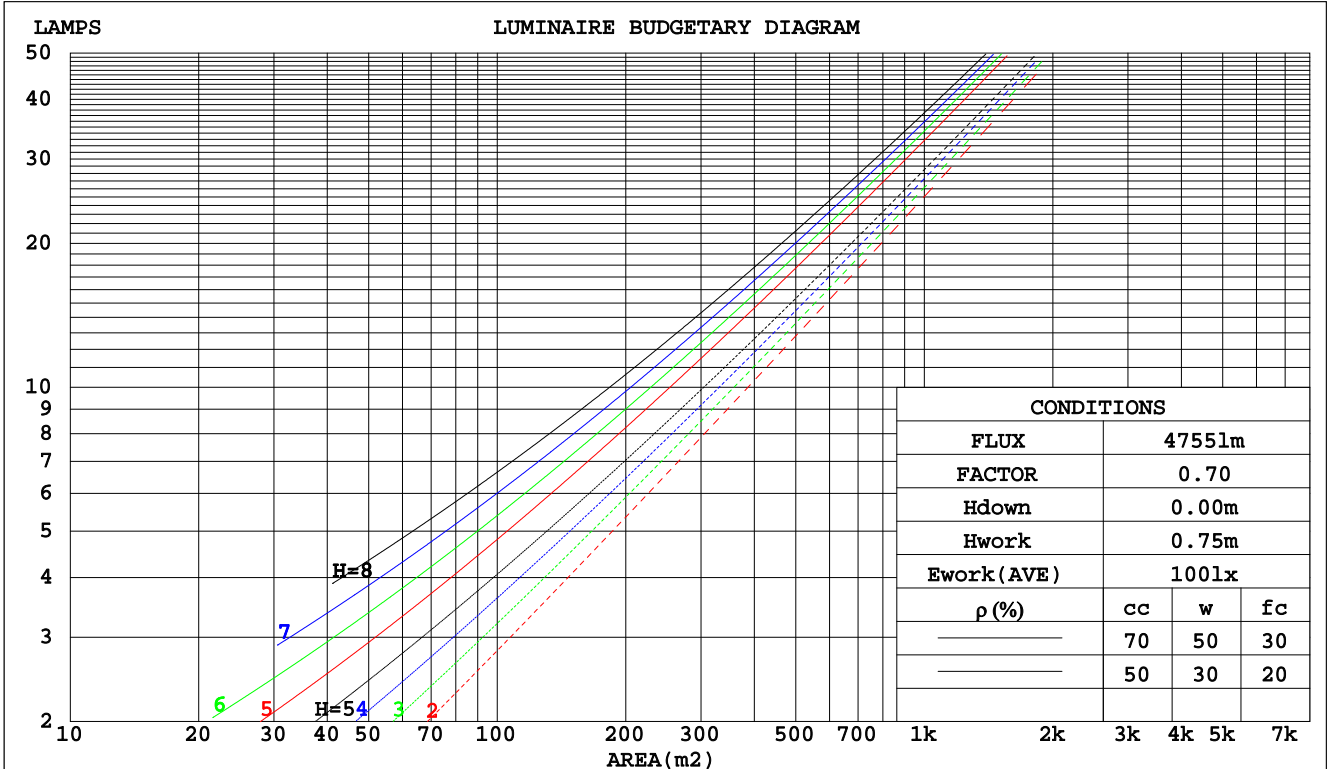
C Range: 0 - 360DEG
 C Interval: 15.0DEG
 Test Speed: HIGH
 Temperature:25.3DEG
 Operators:Jason
 Test Date:2020-06-17

γ Range: 0 - 90DEG
 γ Interval: 1.0DEG
 Test System:EVERFINE GO-2000B_V1 SYSTEM V2.0.362
 Humidity:58%
 Test Distance:5.850m [K=1.0000]
 Remarks:

CU AND LUMINAIRE BUDGETARY ESTIMATE DIAGRAM

Test:U:220.5V I:0.2273A P:49.13W PF:0.9255 Freq:49.90Hz Lamp Flux:4754.97x1 lm		
NAME: GAME-600-46W-930	TYPE:Ceiling light	SERIAL No.:
SPEC.:3000K	DIM.: φ600mm*H78mm	
MFR.: NEKO LIGHTING AG		

pcc	80%			70%			50%			30%			10%			0
	50%	30%	10%	50%	30%	10%	50%	30%	10%	50%	30%	10%	50%	30%	10%	0
ρw																0
ρfc																0
RCR	RCR:Room Cavity Ratio															
	Coefficients of Utilization(CU)															
0.0	1.19	1.19	1.19	1.16	1.16	1.16	1.11	1.11	1.11	1.06	1.06	1.06	1.02	1.02	1.02	1.00
1.0	1.06	1.03	.99	1.04	1.01	.98	.90	.97	.95	.96	.94	.92	.92	.91	.89	.87
2.0	.95	.89	.84	.93	.87	.83	.89	.85	.81	.86	.82	.79	.83	.80	.77	.75
3.0	.85	.78	.72	.83	.77	.71	.80	.75	.70	.78	.73	.69	.75	.71	.68	.66
4.0	.76	.68	.62	.75	.68	.62	.73	.66	.61	.70	.65	.60	.68	.64	.60	.58
5.0	.69	.61	.55	.68	.60	.55	.66	.59	.54	.64	.58	.54	.62	.57	.53	.51
6.0	.63	.55	.49	.62	.54	.49	.60	.53	.48	.59	.52	.48	.57	.52	.47	.45
7.0	.57	.49	.44	.57	.49	.44	.55	.48	.43	.54	.48	.43	.52	.47	.43	.41
8.0	.53	.45	.39	.52	.45	.39	.51	.44	.39	.50	.43	.39	.48	.43	.39	.37
9.0	.49	.41	.36	.48	.41	.36	.47	.40	.36	.46	.40	.35	.45	.39	.35	.33
10.0	.45	.38	.33	.45	.37	.33	.44	.37	.32	.43	.37	.32	.42	.36	.32	.31



C Range: 0 - 360DEG
 C Interval: 15.0DEG
 Test Speed: HIGH
 Temperature: 25.3DEG
 Operators: Jason
 Test Date: 2020-06-17

γ Range: 0 - 90DEG
 γ Interval: 1.0DEG
 Test System: EVERFINE GO-2000B_V1 SYSTEM V2.0.362
 Humidity: 58%
 Test Distance: 5.850m [K=1.0000]
 Remarks:

WEC AND CCEC

Test:U:220.5V I:0.2273A P:49.13W PF:0.9255 Freq:49.90Hz Lamp Flux:4754.97x1 lm		
NAME: GAME-600-46W-930	TYPE:Ceiling light	SERIAL No.:
SPEC.:3000K	DIM.: φ600mm*H78mm	
MFR.: NEKO LIGHTING AG		

ρcc	80%			70%			50%			30%			10%			0
ρw	50%	30%	10%	50%	30%	10%	50%	30%	10%	50%	30%	10%	50%	30%	10%	0
ρfc	20%			20%			20%			20%			20%			0
RCR	RCR:Room Cavity Ratio						Wall Exitance Coefficients(WEC)									
0.0																
1.0	.265	.151	.048	.258	.147	.047	.245	.140	.045	.233	.134	.043	.222	.128	.041	
2.0	.251	.138	.042	.245	.135	.042	.234	.130	.040	.224	.125	.039	.214	.121	.038	
3.0	.236	.125	.038	.230	.123	.037	.220	.119	.036	.211	.116	.036	.203	.112	.035	
4.0	.220	.115	.034	.216	.113	.033	.207	.110	.033	.199	.107	.032	.191	.104	.032	
5.0	.206	.105	.030	.202	.104	.030	.194	.101	.030	.187	.099	.029	.180	.096	.029	
6.0	.193	.097	.028	.190	.096	.028	.183	.094	.027	.176	.092	.027	.170	.090	.027	
7.0	.182	.090	.025	.178	.089	.025	.172	.087	.025	.166	.085	.025	.161	.084	.025	
8.0	.171	.084	.024	.168	.083	.023	.163	.081	.023	.157	.080	.023	.153	.078	.023	
9.0	.162	.078	.022	.159	.077	.022	.154	.076	.022	.149	.075	.021	.145	.074	.021	
10.0	.153	.073	.020	.151	.073	.020	.146	.072	.020	.142	.070	.020	.138	.069	.020	

ρcc	80%			70%			50%			30%			10%			0
ρw	50%	30%	10%	50%	30%	10%	50%	30%	10%	50%	30%	10%	50%	30%	10%	0
ρfc	20%			20%			20%			20%			20%			0
RCR	RCR:Room Cavity Ratio						Ceiling Cavity Exitance Coefficients(CCEC)									
0.0	.190	.190	.190	.163	.163	.163	.111	.111	.111	.064	.064	.064	.020	.020	.020	
1.0	.177	.157	.138	.152	.134	.119	.104	.092	.082	.060	.053	.048	.019	.017	.015	
2.0	.167	.132	.103	.143	.114	.089	.098	.079	.062	.056	.046	.036	.018	.015	.012	
3.0	.158	.114	.079	.135	.098	.069	.093	.068	.048	.054	.040	.028	.017	.013	.009	
4.0	.150	.100	.063	.129	.087	.054	.088	.060	.038	.051	.035	.023	.016	.012	.007	
5.0	.142	.090	.051	.122	.078	.044	.084	.054	.031	.049	.032	.018	.016	.010	.006	
6.0	.135	.081	.042	.116	.070	.037	.080	.049	.026	.047	.029	.015	.015	.009	.005	
7.0	.129	.074	.036	.111	.064	.031	.077	.045	.022	.045	.027	.013	.014	.009	.004	
8.0	.123	.068	.031	.106	.059	.027	.073	.042	.019	.043	.024	.011	.014	.008	.004	
9.0	.117	.063	.027	.101	.055	.023	.070	.039	.017	.041	.023	.010	.013	.007	.003	
10.0	.112	.059	.024	.097	.051	.021	.067	.036	.015	.039	.021	.009	.013	.007	.003	

C Range: 0 - 360DEG
 C Interval: 15.0DEG
 Test Speed: HIGH
 Temperature:25.3DEG
 Operators:Jason
 Test Date:2020-06-17

γ Range: 0 - 90DEG
 γ Interval: 1.0DEG
 Test System:EVERFINE GO-2000B_V1 SYSTEM V2.0.362
 Humidity:58%
 Test Distance:5.850m [K=1.0000]
 Remarks:

UGR(Unified Glare Rating) Table

Test:U:220.5V I:0.2273A P:49.13W PF:0.9255 Freq:49.90Hz Lamp Flux:4754.97x1 lm		
NAME: GAME-600-46W-930	TYPE:Ceiling light	SERIAL No.:
SPEC.:3000K	DIM.: φ600mm*H78mm	
MFR.: NEKO LIGHTING AG		

ceiling/cavity	0.7	0.7	0.5	0.5	0.3	0.7	0.7	0.5	0.5	0.3
walls	0.5	0.3	0.5	0.3	0.3	0.5	0.3	0.5	0.3	0.3
working plane	0.2	0.2	0.2	0.2	0.2	0.2	0.2	0.2	0.2	0.2
Room dimensions	Viewed crosswise					Viewed endwise				
x = 2H y = 2H	11.1	12.4	11.3	12.6	12.8	11.2	12.5	11.4	12.7	12.9
3H	11.7	13.0	12.0	13.2	13.4	11.8	13.1	12.1	13.3	13.5
4H	12.0	13.2	12.3	13.5	13.7	12.2	13.4	12.5	13.6	13.9
6H	12.3	13.4	12.6	13.7	14.0	12.5	13.6	12.8	13.9	14.1
8H	12.4	13.5	12.8	13.8	14.1	12.6	13.7	12.9	14.0	14.2
12H	12.5	13.5	12.8	13.8	14.1	12.7	13.7	13.1	14.0	14.3
4H 2H	11.3	12.5	11.6	12.7	13.0	11.4	12.6	11.7	12.8	13.1
3H	12.2	13.2	12.5	13.5	13.8	12.3	13.3	12.6	13.6	13.9
4H	12.6	13.6	13.0	13.9	14.2	12.8	13.7	13.2	14.0	14.4
6H	13.0	13.9	13.4	14.2	14.6	13.2	14.0	13.6	14.4	14.7
8H	13.2	14.0	13.6	14.3	14.7	13.4	14.2	13.8	14.5	14.9
12H	13.3	14.0	13.7	14.4	14.8	13.6	14.3	14.0	14.7	15.1
8H 4H	12.8	13.6	13.2	14.0	14.3	13.0	13.7	13.4	14.1	14.5
6H	13.4	14.0	13.8	14.4	14.8	13.5	14.2	14.0	14.6	15.0
8H	13.6	14.2	14.0	14.6	15.0	13.8	14.4	14.3	14.8	15.3
12H	13.8	14.2	14.2	14.7	15.2	14.1	14.5	14.5	15.0	15.5
12H 4H	12.8	13.5	13.3	13.9	14.3	13.0	13.7	13.4	14.0	14.4
6H	13.4	14.0	13.9	14.4	14.9	13.6	14.2	14.0	14.6	15.0
8H	13.7	14.2	14.2	14.6	15.1	13.9	14.4	14.4	14.8	15.3
Variations with the observer position at spacings:										
S = 1.0H	+ 0.7 / - 0.6					+ 0.6 / - 0.6				
1.5H	+ 0.5 / - 0.4					+ 0.5 / - 0.4				
2.0H	+ 1.5 / - 0.8					+ 1.4 / - 0.9				

CIE Pub.117, 4755 lm Total Lamp Luminous Flux Correct (8log(F/F0) = 5.4)

C Range: 0 - 360DEG
 C Interval: 15.0DEG
 Test Speed: HIGH
 Temperature:25.3DEG
 Operators:Jason
 Test Date:2020-06-17

γ Range: 0 - 90DEG
 γ Interval: 1.0DEG
 Test System:EVERFINE GO-2000B_V1 SYSTEM V2.0.362
 Humidity:58%
 Test Distance:5.850m [K=1.0000]
 Remarks:

UTILIZATION FACTORS TABLE

Test:U:220.5V I:0.2273A P:49.13W PF:0.9255 Freq:49.90Hz Lamp Flux:4754.97x1 lm		
NAME: GAME-600-46W-930	TYPE:Ceiling light	SERIAL No.:
SPEC.:3000K	DIM.: φ600mm*H78mm	
MFR.: NEKO LIGHTING AG		

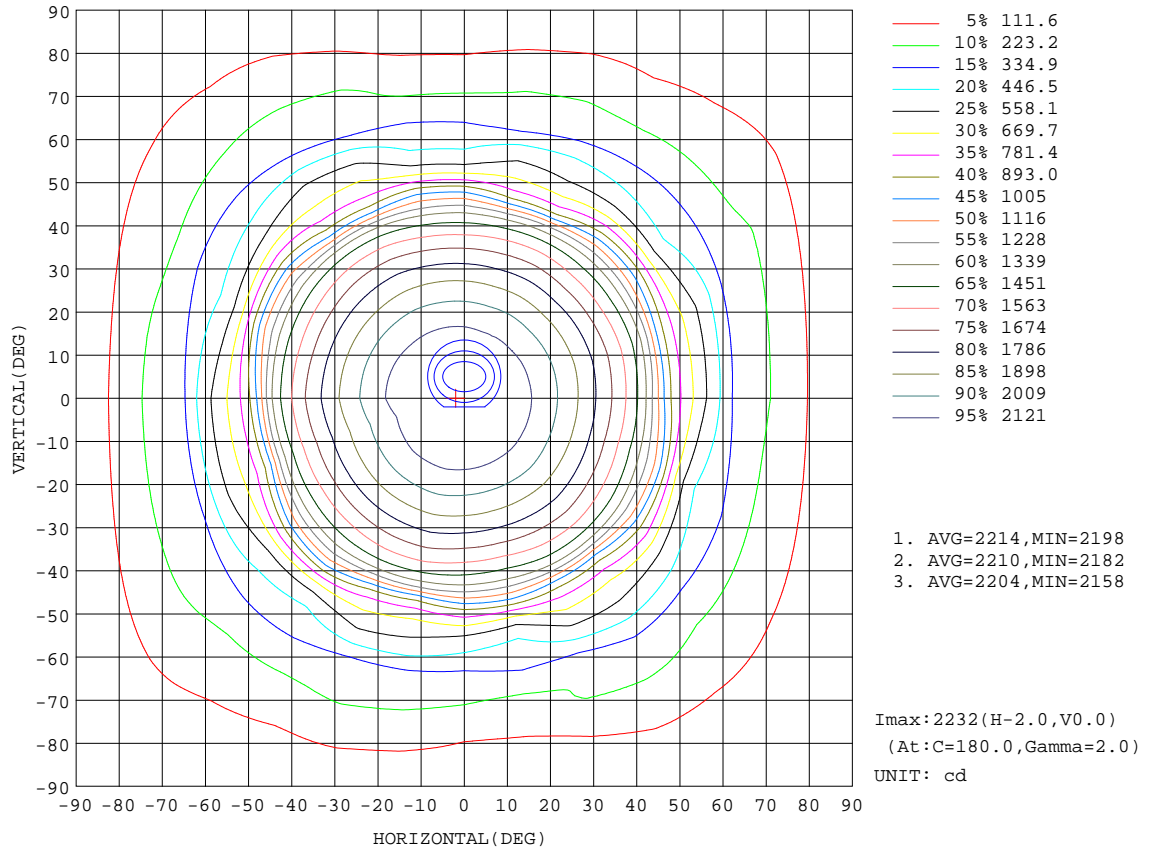
REFLECTANCE										
Ceiling	0.8	0.8	0.8	0.7	0.7	0.7	0.5	0.5	0.5	0
Walls	0.7	0.5	0.3	0.7	0.5	0.3	0.7	0.5	0.3	0
Working plane	0.2	0.2	0.2	0.2	0.2	0.2	0.2	0.2	0.2	0
ROOM INDEX	UTILIZATION FACTORS(PERCENT) $k(RI) \times RCR = 5$									
k = 0.60	65	55	49	65	55	49	64	54	49	43
0.80	75	65	59	74	65	59	73	64	58	52
1.00	83	74	67	82	73	67	80	74	67	61
1.25	90	81	75	88	80	74	86	79	74	67
1.50	94	86	80	92	85	79	90	83	78	72
2.00	100	93	87	98	91	86	95	89	85	78
2.50	103	96	91	101	95	90	97	92	88	81
3.00	105	100	95	103	98	94	100	95	92	84
4.00	109	104	100	106	102	99	102	99	96	88
5.00	111	106	103	108	105	102	104	101	98	90
ROOM INDEX	UF(total)									Direct
According to DIN EN 13032-2 2004			Suspended				SHRNOM = 1.25			

C Range: 0 - 360DEG
 C Interval: 15.0DEG
 Test Speed: HIGH
 Temperature:25.3DEG
 Operators:Jason
 Test Date:2020-06-17

γ Range: 0 - 90DEG
 γ Interval: 1.0DEG
 Test System:EVERFINE GO-2000B_V1 SYSTEM V2.0.362
 Humidity:58%
 Test Distance:5.850m [K=1.0000]
 Remarks:

ISOCANDELA DIAGRAM

Test:U:220.5V I:0.2273A P:49.13W PF:0.9255 Freq:49.90Hz Lamp Flux:4754.97x1 lm		
NAME: GAME-600-46W-930	TYPE:Ceiling light	SERIAL No.:
SPEC.:3000K	DIM.: φ600mm*H78mm	
MFR.: NEKO LIGHTING AG		



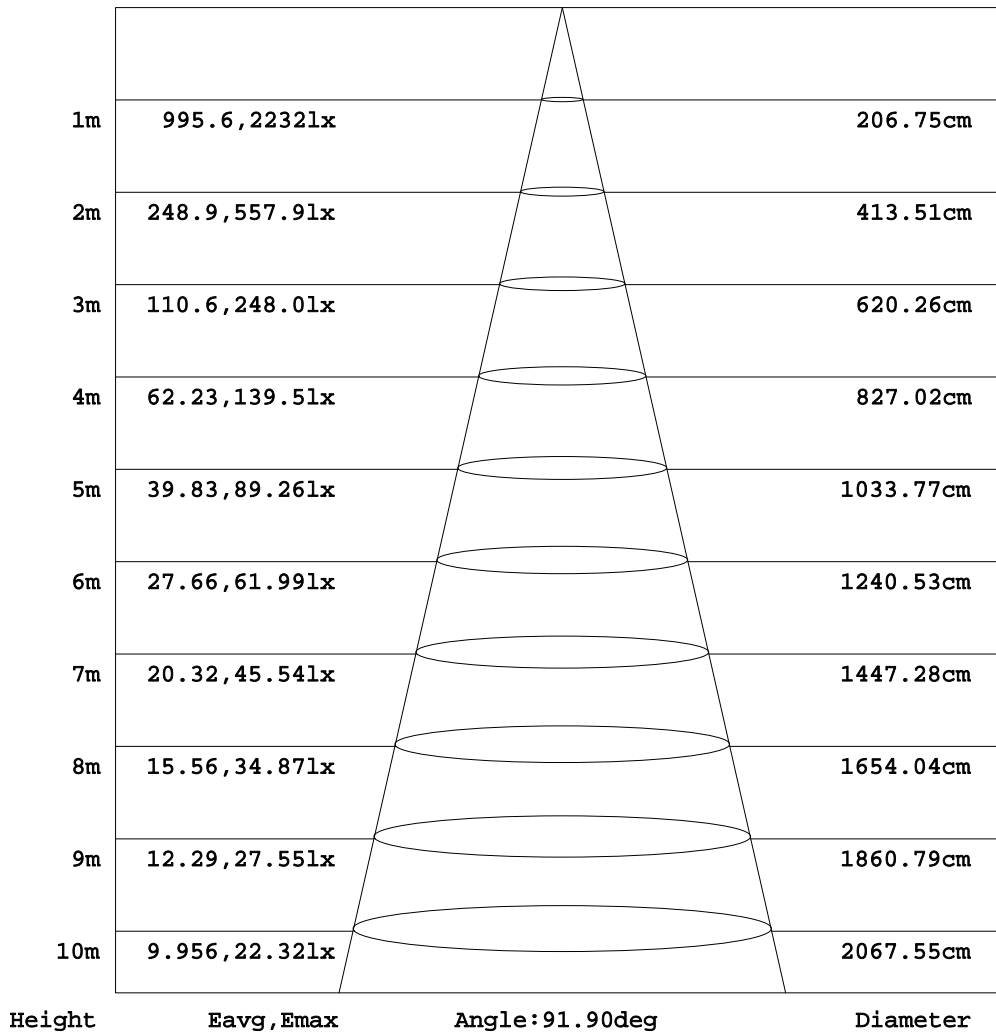
C Range: 0 - 360DEG
C Interval: 15.0DEG
Test Speed: HIGH
Temperature: 25.3DEG
Operators: Jason
Test Date: 2020-06-17

γ Range: 0 - 90DEG
γ Interval: 1.0DEG
Test System: EVERFINE GO-2000B_V1 SYSTEM V2.0.362
Humidity: 58%
Test Distance: 5.850m [K=1.0000]
Remarks:

AAI Figure

Test:U:220.5V I:0.2273A P:49.13W PF:0.9255 Freq:49.90Hz Lamp Flux:4754.97x1 lm		
NAME: GAME-600-46W-930	TYPE:Ceiling light	SERIAL No.:
SPEC.:3000K	DIM.: φ600mm*H78mm	
MFR.: NEKO LIGHTING AG		

Flux out:3354 lm



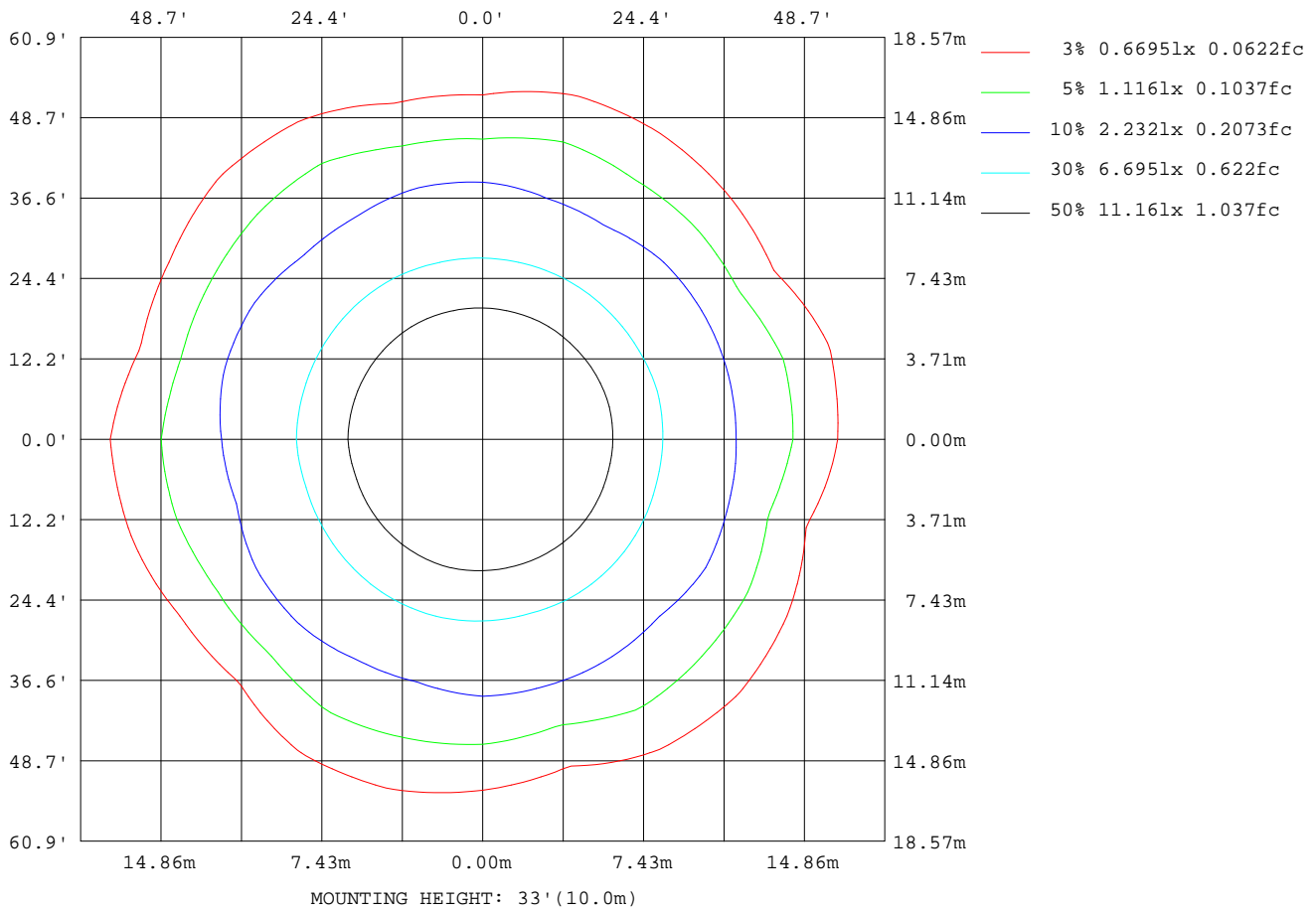
Note:The Curves indicate the illuminated area and the average illumination when the luminaire is at different distance.

C Range: 0 - 360DEG
C Interval: 15.0DEG
Test Speed: HIGH
Temperature:25.3DEG
Operators:Jason
Test Date:2020-06-17

γ Range: 0 - 90DEG
γ Interval: 1.0DEG
Test System:EVERFINE GO-2000B_V1 SYSTEM V2.0.362
Humidity:58%
Test Distance:5.850m [K=1.0000]
Remarks:

ISOLUX DIAGRAM

Test:U:220.5V I:0.2273A P:49.13W PF:0.9255 Freq:49.90Hz Lamp Flux:4754.97x1 lm		
NAME: GAME-600-46W-930	TYPE:Ceiling light	SERIAL No.:
SPEC.:3000K	DIM.: φ600mm*H78mm	
MFR.: NEKO LIGHTING AG		



C Range: 0 - 360DEG
 C Interval: 15.0DEG
 Test Speed: HIGH
 Temperature:25.3DEG
 Operators:Jason
 Test Date:2020-06-17

γ Range: 0 - 90DEG
 γ Interval: 1.0DEG
 Test System:EVERFINE GO-2000B_V1 SYSTEM V2.0.362
 Humidity:58%
 Test Distance:5.850m [K=1.0000]
 Remarks:

LED Avg.L Report

Test:U:220.5V I:0.2273A P:49.13W PF:0.9255 Freq:49.90Hz Lamp Flux:4754.97x1 lm		
NAME: GAME-600-46W-930	TYPE:Ceiling light	SERIAL No.:
SPEC.:3000K	DIM.: φ600mm*H78mm	
MFR.: NEKO LIGHTING AG		

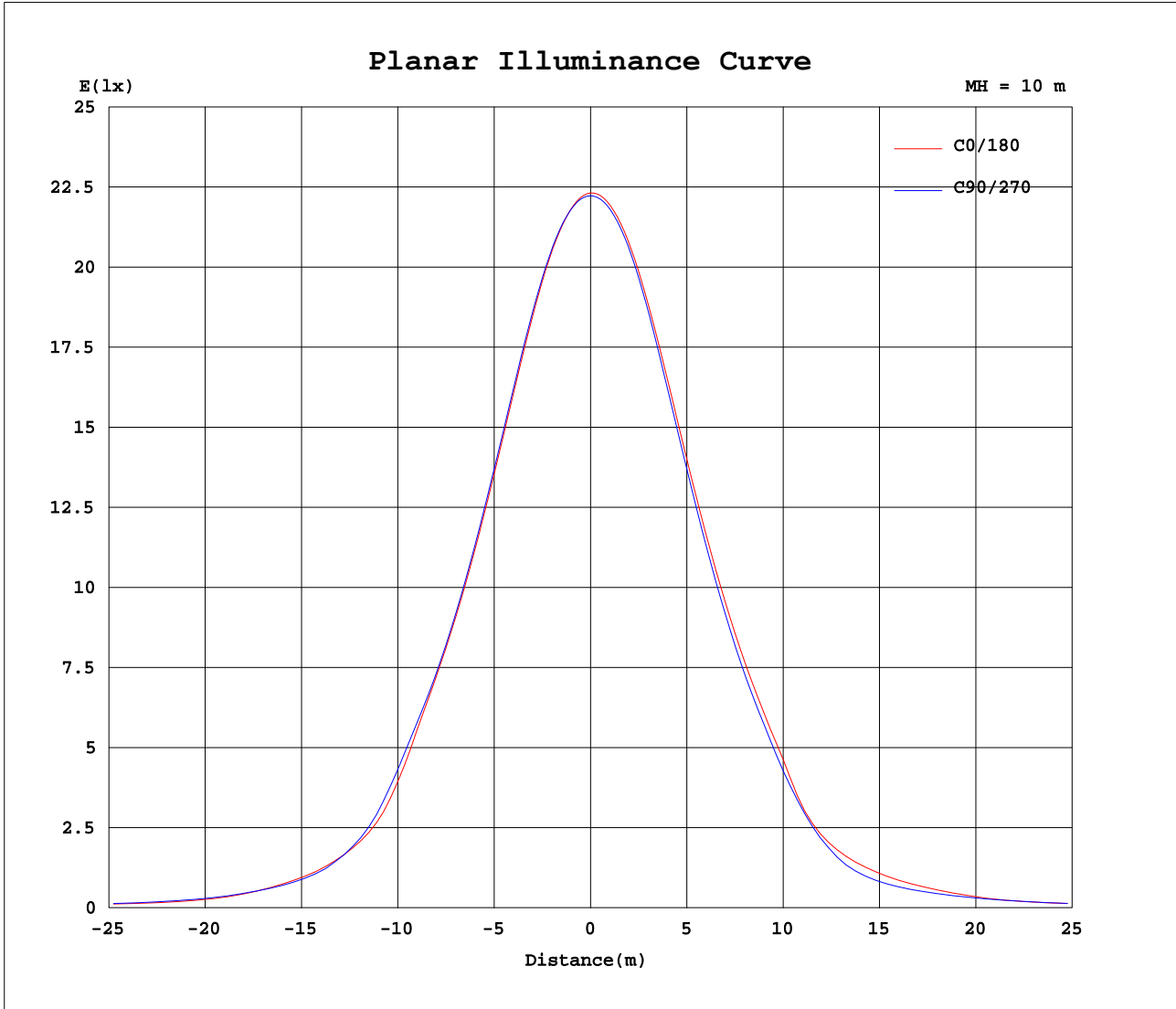
AvgL	cd/m2
L_0~180 (65) av	2434
L_0~180 (75) av	2549
L_0~180 (85) av	2477
L_90~270 (65) av	2572
L_90~270 (75) av	2314
L_90~270 (85) av	2306
L_45 (65) av	2620
L_45 (75) av	2352
L_45 (85) av	2383

Standard: GB/T 29293-2012

C Range: 0 - 360DEG
C Interval: 15.0DEG
Test Speed: HIGH
Temperature:25.3DEG
Operators:Jason
Test Date:2020-06-17

γ Range: 0 - 90DEG
γ Interval: 1.0DEG
Test System:EVERFINE GO-2000B_V1 SYSTEM V2.0.362
Humidity:58%
Test Distance:5.850m [K=1.0000]
Remarks:

Planar Illuminance Curve



C Range: 0 - 360DEG
 C Interval: 15.0DEG
 Test Speed: HIGH
 Temperature: 25.3DEG
 Operators: Jason
 Test Date: 2020-06-17

γ Range: 0 - 90DEG
 γ Interval: 1.0DEG
 Test System: EVERFINE GO-2000B_V1 SYSTEM V2.0.362
 Humidity: 58%
 Test Distance: 5.850m [K=1.0000]
 Remarks:

LUMINOUS DISTRIBUTION INTENSITY DATA

Test:U:220.5V I:0.2273A P:49.13W PF:0.9255 Freq:49.90Hz Lamp Flux:4754.97x1 lm		
NAME: GAME-600-46W-930	TYPE:Ceiling light	SERIAL No.:
SPEC.:3000K	DIM.: φ600mm*H78mm	
MFR.: NEKO LIGHTING AG		

Table--1

UNIT: cd

C (DEG) \ γ (DEG)	0	15	30	45	60	75	90	105	120	135	150	165	180	195	210	225	240	255	270
0	2224	2224	2224	2224	2224	2224	2224	2224	2224	2224	2224	2224	2224	2224	2224	2224	2224	2224	2224
5	2211	2210	2211	2213	2214	2215	2217	2219	2219	2219	2218	2218	2221	2221	2220	2219	2219	2218	2217
10	2179	2179	2181	2184	2185	2189	2193	2197	2198	2198	2196	2194	2201	2200	2199	2196	2196	2195	2193
15	2122	2123	2126	2131	2133	2137	2142	2149	2150	2152	2147	2144	2157	2156	2153	2150	2150	2147	2143
20	2037	2035	2041	2048	2050	2054	2063	2072	2073	2074	2069	2066	2084	2084	2081	2076	2073	2067	2061
25	1925	1921	1929	1939	1940	1943	1953	1967	1968	1968	1964	1963	1985	1982	1978	1973	1971	1961	1952
30	1794	1788	1797	1812	1810	1811	1823	1842	1842	1842	1839	1841	1867	1861	1856	1850	1848	1834	1822
35	1643	1629	1643	1664	1661	1654	1668	1695	1695	1690	1687	1697	1727	1714	1709	1708	1704	1681	1667
40	1456	1442	1464	1476	1481	1470	1490	1516	1520	1511	1507	1517	1559	1544	1539	1536	1527	1497	1481
45	1111	1187	1185	1101	1143	1197	1222	1213	1225	1275	1259	1210	1304	1325	1309	1244	1224	1220	1210
50	787	777	831	753	785	789	828	763	791	880	879	800	871	978	949	824	814	862	827
55	595	483	565	586	606	496	562	589	616	538	561	634	668	615	630	646	653	550	525
60	416	370	418	458	433	379	422	466	468	404	426	480	520	437	464	517	492	412	402
65	258	302	287	311	258	312	298	299	283	316	318	300	324	355	345	328	305	327	316
70	227	209	214	246	228	209	234	245	235	234	231	245	245	245	244	254	237	232	235
75	156	156	155	161	164	165	171	188	190	174	174	190	217	184	187	195	200	178	168
80	107	93.6	99.1	117	111	98.3	109	136	134	110	110	128	126	127	118	135	126	109	108
85	42.9	38.4	42.8	49.3	49.2	48.4	57.8	70.2	70.5	62.3	58.5	64.6	79.2	68.4	68.4	75.2	68.1	58.6	55.8
90	0.78	0.79	0.77	0.77	0.77	0.76	0.77	1.80	4.07	3.72	2.93	1.10	9.87	10.5	6.96	4.82	2.64	1.58	0.64

C Range: 0 - 360DEG	γ Range: 0 - 90DEG
C Interval: 15.0DEG	γ Interval: 1.0DEG
Test Speed: HIGH	Test System:EVERFINE GO-2000B_V1 SYSTEM V2.0.362
Temperature:25.3DEG	Humidity:58%
Operators:Jason	Test Distance:5.850m [K=1.0000]
Test Date:2020-06-17	Remarks:

LUMINOUS DISTRIBUTION INTENSITY DATA

Test:U:220.5V I:0.2273A P:49.13W PF:0.9255 Freq:49.90Hz Lamp Flux:4754.97x1 lm		
NAME: GAME-600-46W-930	TYPE:Ceiling light	SERIAL No.:
SPEC.:3000K	DIM.: φ600mm*H78mm	
MFR.: NEKO LIGHTING AG		

Table--2

UNIT: cd

C (DEG) γ (DEG)	285	300	315	330	345											
0	2224	2224	2224	2224	2224											
5	2216	2216	2215	2216	2216											
10	2190	2190	2188	2189	2189											
15	2136	2136	2133	2135	2135											
20	2053	2052	2047	2049	2051											
25	1943	1943	1936	1940	1944											
30	1812	1812	1802	1808	1815											
35	1660	1660	1643	1650	1666											
40	1470	1464	1453	1460	1485											
45	1099	1076	1147	1155	1155											
50	746	706	779	784	796											
55	585	545	533	493	605											
60	435	433	400	369	447											
65	261	285	296	305	276											
70	228	233	218	218	231											
75	174	172	158	161	174											
80	125	126	102	99.5	116											
85	55.7	56.7	48.0	48.3	54.7											
90	0.65	0.66	0.64	0.64	0.66											

C Range: 0 - 360DEG
 C Interval: 15.0DEG
 Test Speed: HIGH
 Temperature:25.3DEG
 Operators:Jason
 Test Date:2020-06-17

γ Range: 0 - 90DEG
 γ Interval: 1.0DEG
 Test System:EVERFINE GO-2000B_V1 SYSTEM V2.0.362
 Humidity:58%
 Test Distance:5.850m [K=1.0000]
 Remarks: