

LED Ceiling Light GAME-600-36W-930



Light Output Ratio:	100.0%	
Luminaire Power:	39.99 W	
SHR Nominal:	1.25	Calculated using the TM5
SHR Maximum:	1.35	fine grid method.

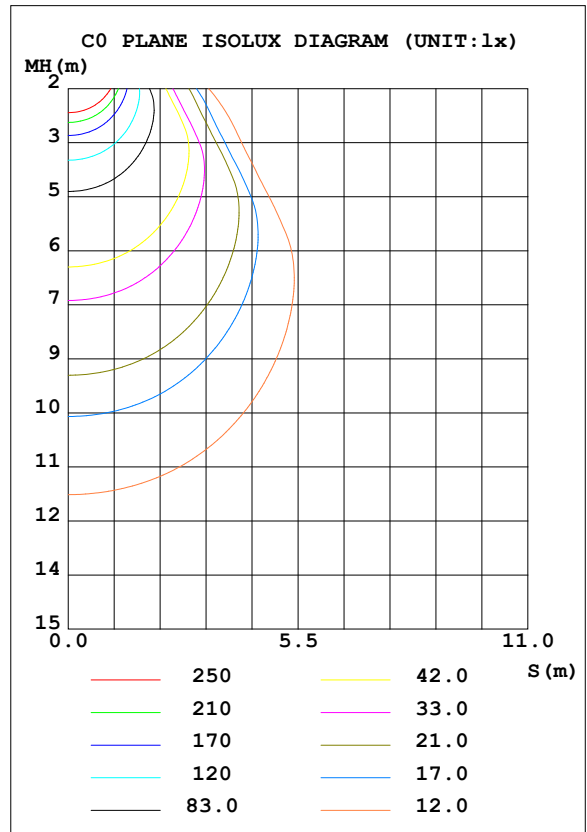
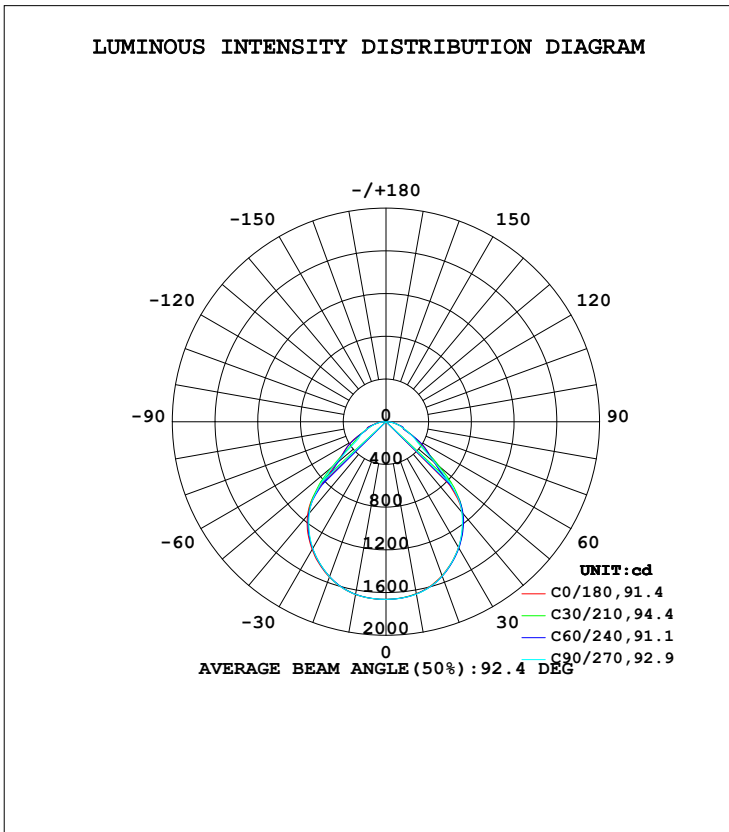
C Range: 0 - 360DEG
C Interval: 15.0DEG
Test Speed: HIGH
Temperature: 25.3DEG
Operators: Jason
Test Date: 2020-06-17

γ Range: 0 - 90DEG
 γ Interval: 1.0DEG
Test System: EVERFINE GO-2000B_V1 SYSTEM V2.0.362
Humidity: 58%
Test Distance: 5.850m [K=1.0000]
Remarks:

LUMINAIRE PHOTOMETRIC TEST REPORT

Test:U:220.6V I:0.1812A P:39.99W PF:0.9034 Freq:49.90Hz Lamp Flux:3558.09x1 lm		
NAME: GAME-600-36W-930	TYPE:Ceiling light	SERIAL No.:
SPEC.:3000K	DIM.: φ600mm*H78mm	
MFR.: NEKO LIGHTING AG		

DATA OF LAMP		PHOTOMETRIC DATA Eff: 88.97 lm/W			
MODEL	OSRAM-3000K	I _{max} (cd)	1663	S/MH (C0/180)	1.24
NOMINAL POWER (W)	40	LOR (%)	100.0	S/MH (C90/270)	1.23
RATED VOLTAGE (V)	220	TOTAL FLUX (lm)	3558.1	η UP, DN (C0-180)	0.0,50.1
NOMINAL FLUX (lm)	3558.09	CIE CLASS	DIRECT	η UP, DN (C180-360)	0.0,49.9
LAMPS INSIDE	1	η up (%)	0.0	CIBSE SHR NOM	1.25
TEST VOLTAGE (V)	220	η down (%)	100.0	CIBSE SHR MAX	1.35



C Range: 0 - 360DEG
C Interval: 15.0DEG
Test Speed: HIGH
Temperature:25.3DEG
Operators:Jason
Test Date:2020-06-17

γ Range: 0 - 90DEG
γ Interval: 1.0DEG
Test System:EVERFINE GO-2000B_V1 SYSTEM V2.0.362
Humidity:58%
Test Distance:5.850m [K=1.0000]
Remarks:

ZONAL FLUX DIAGRAM

ZONAL FLUX DIAGRAM:

γ	C0	C45	C90	C135	C180	C225	C270	C315	γ	Φ zone	Φ total	%lum,lamp
10	1635	1637	1639	1643	1643	1641	1643	1639	0- 10	157.7	157.7	4.43,4.43
20	1533	1538	1538	1548	1549	1546	1545	1534	10- 20	451.5	609.2	17.1,17.1
30	1358	1366	1358	1375	1383	1375	1370	1353	20- 30	672.9	1282	36,36
40	1110	1120	1104	1126	1143	1137	1116	1094	30- 40	782.2	2064	58,58
50	589.4	586.7	603.9	643.5	611.7	616.6	633.9	593.8	40- 50	678.4	2743	77.1,77.1
60	339.2	351.3	304.6	309.1	372.7	370.8	289.1	305.6	50- 60	397.6	3140	88.3,88.3
70	174.3	180.6	169.5	174.0	189.6	180.4	176.6	166.0	60- 70	232.8	3373	94.8,94.8
80	87.08	87.28	76.10	81.21	96.76	94.46	83.54	78.84	70- 80	138.1	3511	98.7,98.7
90	0.5734	0.5686	0.5640	1.567	1.908	0.8616	0.5836	0.4808	80- 90	46.95	3558	100,100
100									90-100			
110									100-110			
120									110-120			
130									120-130			
140									130-140			
150									140-150			
160									150-160			
170									160-170			
180									170-180			
DEG	LUMINOUS INTENSITY:cd									UNIT:lm		

Conical surface Flux(90deg): 2442.2 lm

%lum = 68.6%
%lamp = 68.6%

Conical surface Flux(120deg): 3140.3 lm

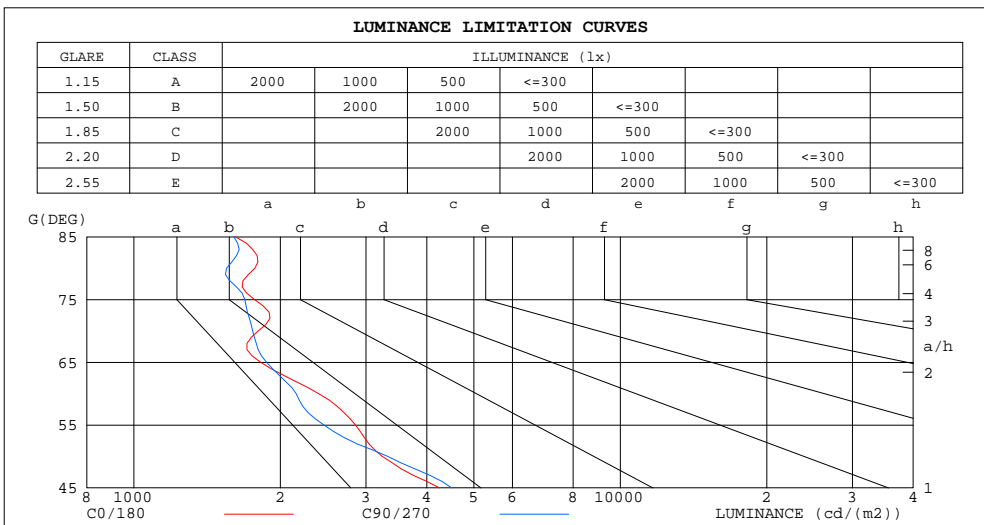
%lum = 88.3%
%lamp = 88.3%

C Range: 0 - 360DEG
C Interval: 15.0DEG
Test Speed: HIGH
Temperature:25.3DEG
Operators:Jason
Test Date:2020-06-17

γ Range: 0 - 90DEG
 γ Interval: 1.0DEG
Test System:EVERFINE GO-2000B_V1 SYSTEM V2.0.362
Humidity:58%
Test Distance:5.850m [K=1.0000]
Remarks:

LUMINANCE LIMITATION CURVES

Test:U:220.6V I:0.1812A P:39.99W PF:0.9034 Freq:49.90Hz Lamp Flux:3558.09x1 lm		
NAME: GAME-600-36W-930	TYPE:Ceiling light	SERIAL No.:
SPEC.:3000K	DIM.: φ600mm*H78mm	
MFR.: NEKO LIGHTING AG		



LUMINANCE cd/(m2)		
G(DEG)	C0/180	C90/270
85	1617	1604
80	1773	1551
75	1770	1690
70	1801	1754
65	1822	1875
60	2398	2156
55	2856	2459
50	3241	3325
45	4251	4504

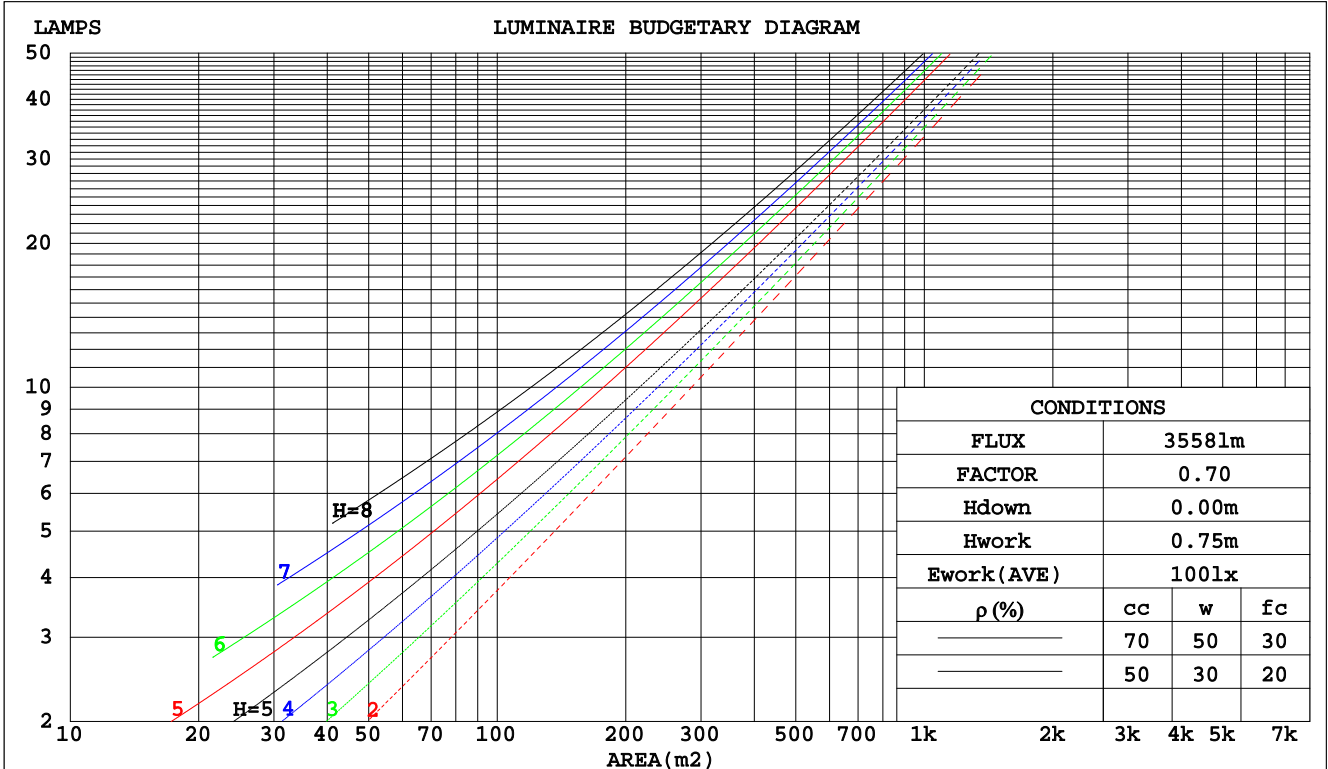
C Range: 0 - 360DEG
 C Interval: 15.0DEG
 Test Speed: HIGH
 Temperature:25.3DEG
 Operators:Jason
 Test Date:2020-06-17

γ Range: 0 - 90DEG
 γ Interval: 1.0DEG
 Test System:EVERFINE GO-2000B_V1 SYSTEM V2.0.362
 Humidity:58%
 Test Distance:5.850m [K=1.0000]
 Remarks:

CU AND LUMINAIRE BUDGETARY ESTIMATE DIAGRAM

Test:U:220.6V I:0.1812A P:39.99W PF:0.9034 Freq:49.90Hz Lamp Flux:3558.09x1 lm		
NAME: GAME-600-36W-930	TYPE:Ceiling light	SERIAL No.:
SPEC.:3000K	DIM.: φ600mm*H78mm	
MFR.: NEKO LIGHTING AG		

pcc	80%			70%			50%			30%			10%			0
	50%	30%	10%	50%	30%	10%	50%	30%	10%	50%	30%	10%	50%	30%	10%	0
pw																0
pfc																0
RCR	RCR:Room Cavity Ratio															
	Coefficients of Utilization(CU)															
0.0	1.19	1.19	1.19	1.16	1.16	1.16	1.11	1.11	1.11	1.06	1.06	1.06	1.02	1.02	1.02	1.00
1.0	1.06	1.03	.99	1.04	1.01	.98	.90	.97	.95	.96	.94	.92	.92	.91	.89	.87
2.0	.95	.89	.84	.93	.87	.83	.89	.85	.81	.86	.82	.79	.83	.80	.77	.75
3.0	.85	.78	.72	.83	.77	.71	.80	.75	.70	.78	.73	.69	.75	.71	.68	.66
4.0	.76	.68	.62	.75	.68	.62	.73	.66	.61	.70	.65	.60	.68	.64	.60	.58
5.0	.69	.61	.55	.68	.60	.55	.66	.59	.54	.64	.58	.54	.62	.57	.53	.51
6.0	.63	.55	.49	.62	.54	.49	.60	.53	.48	.59	.52	.48	.57	.52	.47	.45
7.0	.57	.49	.44	.57	.49	.44	.55	.48	.43	.54	.48	.43	.52	.47	.43	.41
8.0	.53	.45	.39	.52	.45	.39	.51	.44	.39	.50	.43	.39	.48	.43	.39	.37
9.0	.49	.41	.36	.48	.41	.36	.47	.40	.36	.46	.40	.35	.45	.39	.35	.33
10.0	.45	.38	.33	.45	.37	.33	.44	.37	.32	.43	.37	.32	.42	.36	.32	.31



C Range: 0 - 360DEG
C Interval: 15.0DEG
Test Speed: HIGH
Temperature: 25.3DEG
Operators: Jason
Test Date: 2020-06-17

γ Range: 0 - 90DEG
γ Interval: 1.0DEG
Test System: EVERFINE GO-2000B_V1 SYSTEM V2.0.362
Humidity: 58%
Test Distance: 5.850m [K=1.0000]
Remarks:

WEC AND CCEC

Test:U:220.6V I:0.1812A P:39.99W PF:0.9034 Freq:49.90Hz Lamp Flux:3558.09x1 lm		
NAME: GAME-600-36W-930	TYPE:Ceiling light	SERIAL No.:
SPEC.:3000K	DIM.: φ600mm*H78mm	
MFR.: NEKO LIGHTING AG		

ρcc	80%			70%			50%			30%			10%			0
ρw	50%	30%	10%	50%	30%	10%	50%	30%	10%	50%	30%	10%	50%	30%	10%	0
ρfc	20%			20%			20%			20%			20%			0
RCR	RCR:Room Cavity Ratio						Wall Exitance Coefficients(WEC)									
0.0																
1.0	.265	.150	.048	.258	.147	.047	.245	.140	.045	.233	.134	.043	.222	.128	.041	
2.0	.251	.138	.042	.245	.135	.042	.234	.130	.040	.224	.125	.039	.214	.121	.038	
3.0	.236	.125	.038	.230	.123	.037	.220	.119	.036	.211	.116	.036	.203	.112	.035	
4.0	.220	.115	.034	.216	.113	.033	.207	.110	.033	.199	.107	.032	.191	.104	.032	
5.0	.206	.105	.030	.202	.104	.030	.194	.101	.030	.187	.099	.029	.180	.096	.029	
6.0	.193	.097	.028	.190	.096	.028	.183	.094	.027	.176	.092	.027	.170	.090	.027	
7.0	.182	.090	.025	.178	.089	.025	.172	.087	.025	.166	.085	.025	.161	.084	.025	
8.0	.171	.084	.024	.168	.083	.023	.163	.081	.023	.158	.080	.023	.153	.078	.023	
9.0	.162	.078	.022	.159	.077	.022	.154	.076	.022	.149	.075	.021	.145	.074	.021	
10.0	.153	.073	.020	.151	.073	.020	.146	.072	.020	.142	.070	.020	.138	.069	.020	

ρcc	80%			70%			50%			30%			10%			0
ρw	50%	30%	10%	50%	30%	10%	50%	30%	10%	50%	30%	10%	50%	30%	10%	0
ρfc	20%			20%			20%			20%			20%			0
RCR	RCR:Room Cavity Ratio						Ceiling Cavity Exitance Coefficients(CCEC)									
0.0	.190	.190	.190	.163	.163	.163	.111	.111	.111	.064	.064	.064	.020	.020	.020	
1.0	.177	.157	.138	.152	.134	.119	.104	.092	.082	.060	.053	.048	.019	.017	.015	
2.0	.167	.132	.103	.143	.114	.089	.098	.079	.062	.056	.046	.036	.018	.015	.012	
3.0	.158	.114	.079	.135	.098	.069	.093	.068	.048	.054	.040	.028	.017	.013	.009	
4.0	.150	.100	.063	.129	.087	.054	.088	.060	.038	.051	.035	.023	.016	.012	.007	
5.0	.142	.090	.051	.122	.078	.044	.084	.054	.031	.049	.032	.018	.016	.010	.006	
6.0	.135	.081	.042	.116	.070	.037	.080	.049	.026	.047	.029	.015	.015	.009	.005	
7.0	.129	.074	.036	.111	.064	.031	.077	.045	.022	.045	.027	.013	.014	.009	.004	
8.0	.123	.068	.031	.106	.059	.027	.073	.042	.019	.043	.024	.011	.014	.008	.004	
9.0	.117	.063	.027	.101	.055	.023	.070	.039	.017	.041	.023	.010	.013	.007	.003	
10.0	.112	.059	.024	.097	.051	.021	.067	.036	.015	.039	.021	.009	.013	.007	.003	

C Range: 0 - 360DEG
 C Interval: 15.0DEG
 Test Speed: HIGH
 Temperature:25.3DEG
 Operators:Jason
 Test Date:2020-06-17

γ Range: 0 - 90DEG
 γ Interval: 1.0DEG
 Test System:EVERFINE GO-2000B_V1 SYSTEM V2.0.362
 Humidity:58%
 Test Distance:5.850m [K=1.0000]
 Remarks:

UGR(Unified Glare Rating) Table

Test:U:220.6V I:0.1812A P:39.99W PF:0.9034 Freq:49.90Hz Lamp Flux:3558.09x1 lm		
NAME: GAME-600-36W-930	TYPE:Ceiling light	SERIAL No.:
SPEC.:3000K	DIM.: φ600mm*H78mm	
MFR.: NEKO LIGHTING AG		

ceiling/cavity	0.7	0.7	0.5	0.5	0.3	0.7	0.7	0.5	0.5	0.3
walls	0.5	0.3	0.5	0.3	0.3	0.5	0.3	0.5	0.3	0.3
working plane	0.2	0.2	0.2	0.2	0.2	0.2	0.2	0.2	0.2	0.2
Room dimensions	Viewed crosswise					Viewed endwise				
x = 2H y = 2H	11.5	12.8	11.7	13.0	13.2	11.3	12.7	11.6	12.9	13.1
3H	12.1	13.4	12.4	13.6	13.8	12.0	13.2	12.3	13.4	13.7
4H	12.5	13.7	12.8	13.9	14.1	12.3	13.5	12.6	13.7	14.0
6H	12.8	13.9	13.1	14.1	14.4	12.6	13.7	12.9	13.9	14.2
8H	12.9	14.0	13.2	14.2	14.5	12.7	13.8	13.0	14.0	14.3
12H	13.0	14.0	13.3	14.3	14.6	12.8	13.8	13.1	14.1	14.4
4H 2H	11.7	12.9	12.0	13.1	13.4	11.5	12.7	11.8	13.0	13.2
3H	12.6	13.6	12.9	13.9	14.2	12.4	13.5	12.8	13.8	14.1
4H	13.0	14.0	13.4	14.3	14.6	12.9	13.9	13.3	14.2	14.5
6H	13.5	14.3	13.9	14.6	15.0	13.3	14.1	13.7	14.5	14.8
8H	13.7	14.4	14.1	14.8	15.2	13.5	14.3	13.9	14.6	15.0
12H	13.8	14.5	14.2	14.9	15.3	13.6	14.3	14.1	14.7	15.1
8H 4H	13.2	14.0	13.6	14.3	14.7	13.1	13.9	13.5	14.2	14.6
6H	13.8	14.4	14.2	14.8	15.2	13.7	14.3	14.1	14.7	15.1
8H	14.1	14.6	14.5	15.0	15.5	14.0	14.5	14.4	14.9	15.4
12H	14.3	14.8	14.8	15.2	15.7	14.2	14.7	14.7	15.1	15.6
12H 4H	13.2	13.9	13.6	14.3	14.7	13.1	13.8	13.5	14.2	14.6
6H	13.8	14.4	14.3	14.8	15.3	13.7	14.3	14.2	14.7	15.2
8H	14.2	14.6	14.6	15.1	15.6	14.1	14.6	14.5	15.0	15.5
Variations with the observer position at spacings:										
S = 1.0H	+ 0.6 / - 0.5					+ 0.6 / - 0.6				
1.5H	+ 0.5 / - 0.5					+ 0.5 / - 0.4				
2.0H	+ 1.5 / - 0.8					+ 1.4 / - 0.8				

CIE Pub.117, 3558 lm Total Lamp Luminous Flux Correct (8log(F/F0) = 4.4)

C Range: 0 - 360DEG
 C Interval: 15.0DEG
 Test Speed: HIGH
 Temperature:25.3DEG
 Operators:Jason
 Test Date:2020-06-17

γ Range: 0 - 90DEG
 γ Interval: 1.0DEG
 Test System:EVERFINE GO-2000B_V1 SYSTEM V2.0.362
 Humidity:58%
 Test Distance:5.850m [K=1.0000]
 Remarks:

UTILIZATION FACTORS TABLE

Test:U:220.6V I:0.1812A P:39.99W PF:0.9034 Freq:49.90Hz Lamp Flux:3558.09x1 lm		
NAME: GAME-600-36W-930	TYPE:Ceiling light	SERIAL No.:
SPEC.:3000K	DIM.: φ600mm*H78mm	
MFR.: NEKO LIGHTING AG		

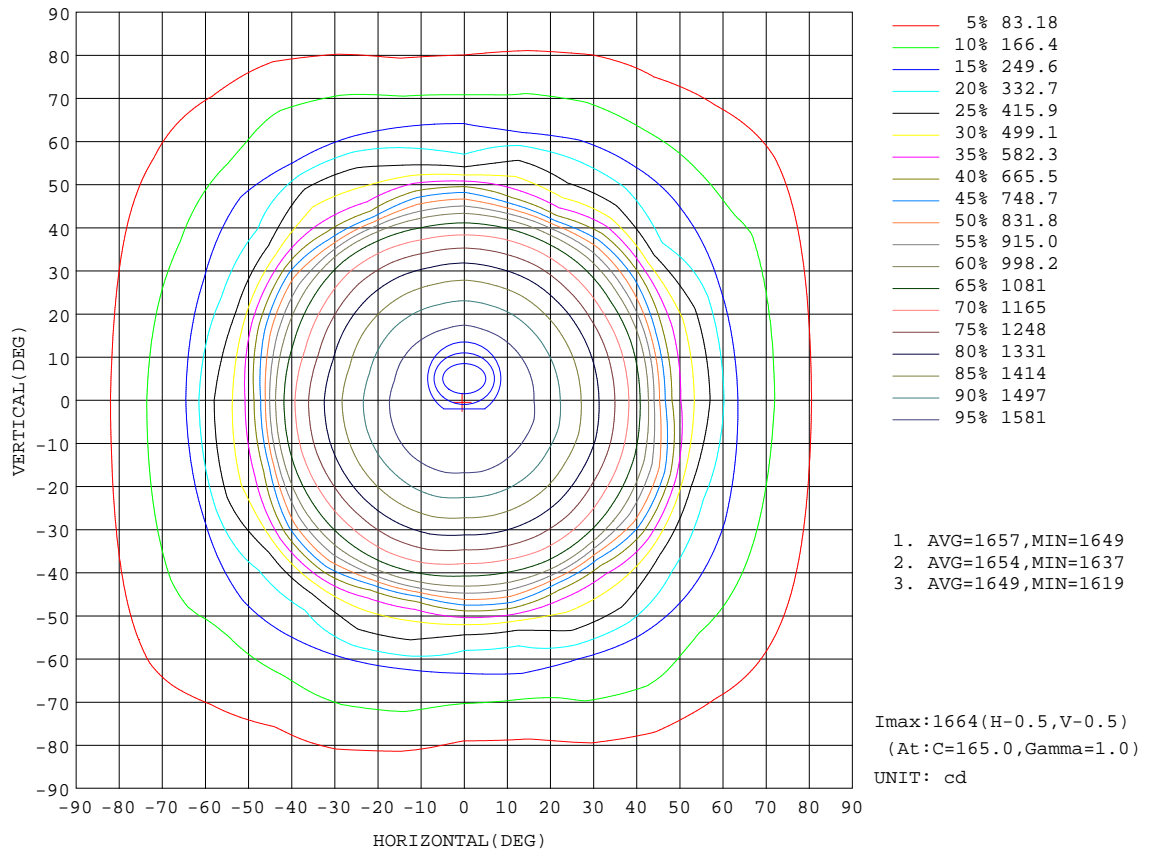
REFLECTANCE										
Ceiling	0.8	0.8	0.8	0.7	0.7	0.7	0.5	0.5	0.5	0
Walls	0.7	0.5	0.3	0.7	0.5	0.3	0.7	0.5	0.3	0
Working plane	0.2	0.2	0.2	0.2	0.2	0.2	0.2	0.2	0.2	0
ROOM INDEX	UTILIZATION FACTORS(PERCENT) $k(RI) \times RCR = 5$									
k = 0.60	65	55	49	65	55	49	64	54	49	43
0.80	75	65	59	74	65	59	73	64	58	52
1.00	83	74	67	82	73	67	80	74	67	61
1.25	90	81	75	88	80	74	86	79	74	67
1.50	94	86	80	92	85	79	90	83	78	72
2.00	100	93	87	98	91	86	95	89	85	78
2.50	103	96	91	101	95	90	97	92	88	81
3.00	105	100	95	103	98	94	100	95	92	84
4.00	109	104	100	106	102	99	102	99	96	88
5.00	111	106	103	108	105	102	104	101	98	90
ROOM INDEX	UF(total)									Direct
According to DIN EN 13032-2 2004			Suspended				SHRNOM = 1.25			

C Range: 0 - 360DEG
 C Interval: 15.0DEG
 Test Speed: HIGH
 Temperature:25.3DEG
 Operators:Jason
 Test Date:2020-06-17

γ Range: 0 - 90DEG
 γ Interval: 1.0DEG
 Test System:EVERFINE GO-2000B_V1 SYSTEM V2.0.362
 Humidity:58%
 Test Distance:5.850m [K=1.0000]
 Remarks:

ISOCANDELA DIAGRAM

Test:U:220.6V I:0.1812A P:39.99W PF:0.9034 Freq:49.90Hz Lamp Flux:3558.09x1 lm		
NAME: GAME-600-36W-930	TYPE:Ceiling light	SERIAL No.:
SPEC.:3000K	DIM.: φ600mm*H78mm	
MFR.: NEKO LIGHTING AG		



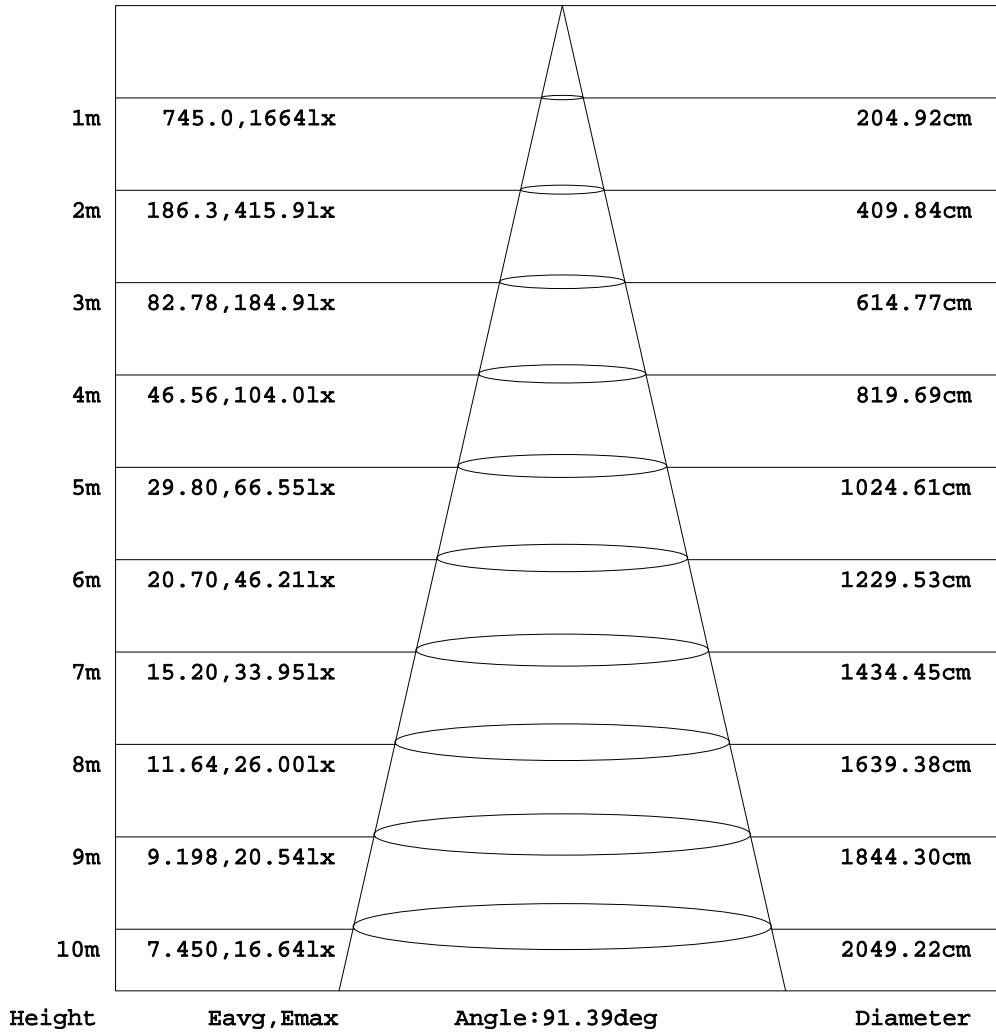
C Range: 0 - 360DEG
 C Interval: 15.0DEG
 Test Speed: HIGH
 Temperature:25.3DEG
 Operators:Jason
 Test Date:2020-06-17

γ Range: 0 - 90DEG
 γ Interval: 1.0DEG
 Test System:EVERFINE GO-2000B_V1 SYSTEM V2.0.362
 Humidity:58%
 Test Distance:5.850m [K=1.0000]
 Remarks:

AAI Figure

Test:U:220.6V I:0.1812A P:39.99W PF:0.9034 Freq:49.90Hz Lamp Flux:3558.09x1 lm		
NAME: GAME-600-36W-930	TYPE:Ceiling light	SERIAL No.:
SPEC.:3000K	DIM.: φ600mm*H78mm	
MFR.: NEKO LIGHTING AG		

Flux out:2510 lm



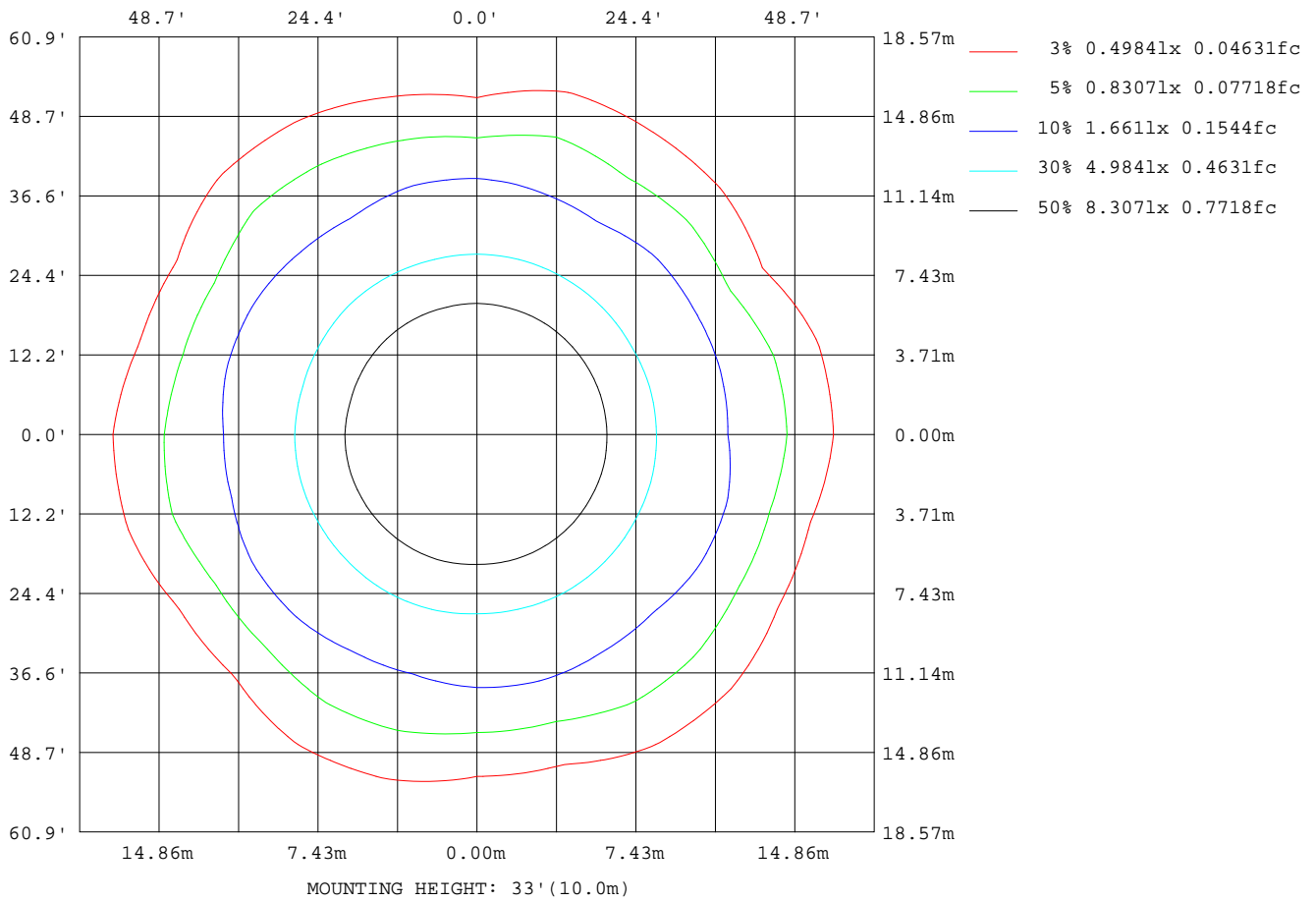
Note:The Curves indicate the illuminated area and the average illumination when the luminaire is at different distance.

C Range: 0 - 360DEG
C Interval: 15.0DEG
Test Speed: HIGH
Temperature:25.3DEG
Operators:Jason
Test Date:2020-06-17

γ Range: 0 - 90DEG
γ Interval: 1.0DEG
Test System:EVERFINE GO-2000B_V1 SYSTEM V2.0.362
Humidity:58%
Test Distance:5.850m [K=1.0000]
Remarks:

ISOLUX DIAGRAM

Test:U:220.6V I:0.1812A P:39.99W PF:0.9034 Freq:49.90Hz Lamp Flux:3558.09x1 lm		
NAME: GAME-600-36W-930	TYPE:Ceiling light	SERIAL No.:
SPEC.:3000K	DIM.: φ600mm*H78mm	
MFR.: NEKO LIGHTING AG		



C Range: 0 - 360DEG
 C Interval: 15.0DEG
 Test Speed: HIGH
 Temperature:25.3DEG
 Operators:Jason
 Test Date:2020-06-17

γ Range: 0 - 90DEG
 γ Interval: 1.0DEG
 Test System:EVERFINE GO-2000B_V1 SYSTEM V2.0.362
 Humidity:58%
 Test Distance:5.850m [K=1.0000]
 Remarks:

LED Avg.L Report

Test:U:220.6V I:0.1812A P:39.99W PF:0.9034 Freq:49.90Hz Lamp Flux:3558.09x1 lm		
NAME: GAME-600-36W-930	TYPE:Ceiling light	SERIAL No.:
SPEC.:3000K	DIM.: φ600mm*H78mm	
MFR.: NEKO LIGHTING AG		

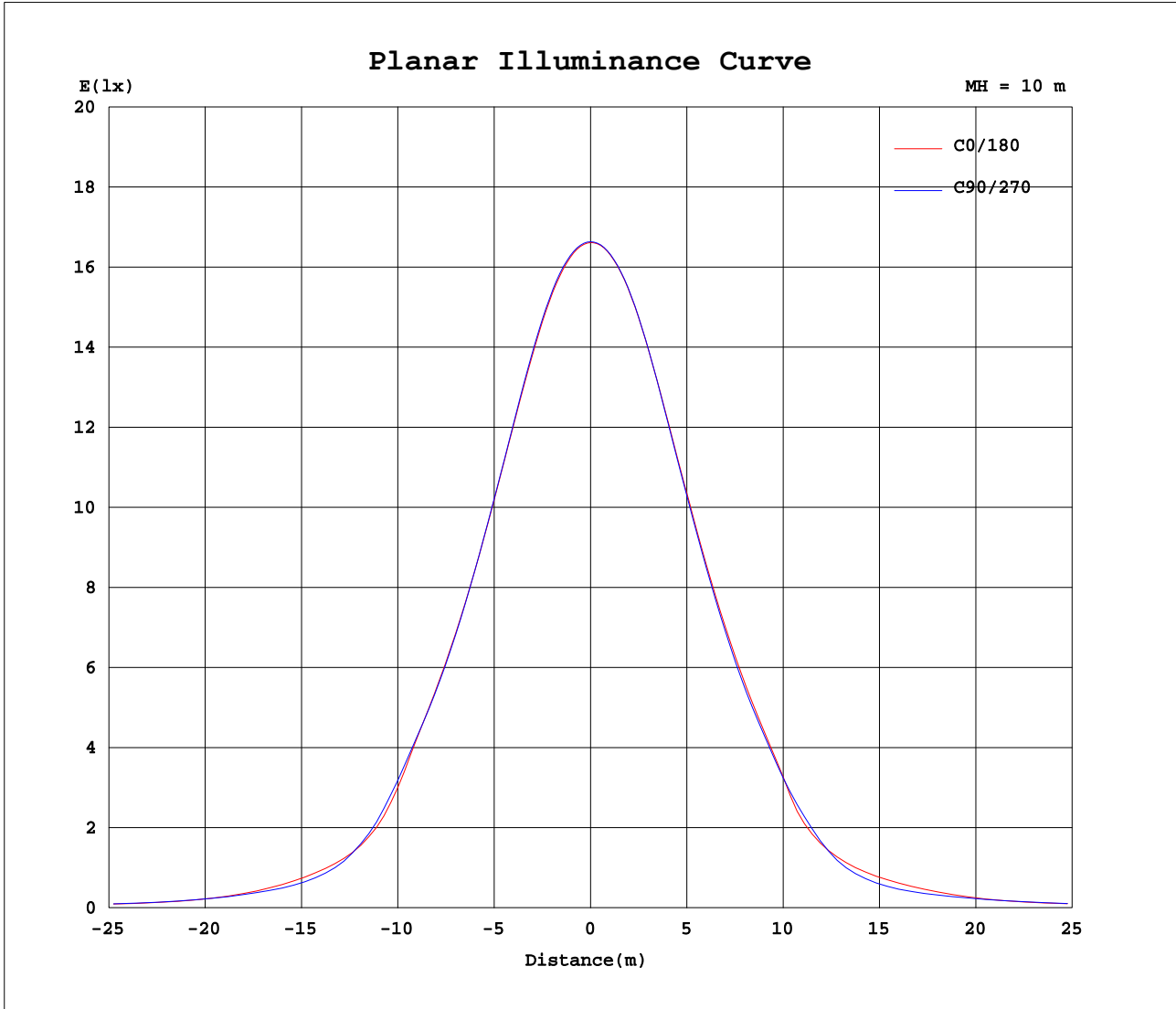
AvgL	cd/m2
L_0~180 (65) av	1913
L_0~180 (75) av	1886
L_0~180 (85) av	1874
L_90~270 (65) av	1940
L_90~270 (75) av	1718
L_90~270 (85) av	1691
L_45 (65) av	1883
L_45 (75) av	1793
L_45 (85) av	1774

Standard: GB/T 29293-2012

C Range: 0 - 360DEG
C Interval: 15.0DEG
Test Speed: HIGH
Temperature:25.3DEG
Operators:Jason
Test Date:2020-06-17

γ Range: 0 - 90DEG
γ Interval: 1.0DEG
Test System:EVERFINE GO-2000B_V1 SYSTEM V2.0.362
Humidity:58%
Test Distance:5.850m [K=1.0000]
Remarks:

Planar Illuminance Curve



C Range: 0 - 360DEG
 C Interval: 15.0DEG
 Test Speed: HIGH
 Temperature: 25.3DEG
 Operators: Jason
 Test Date: 2020-06-17

γ Range: 0 - 90DEG
 γ Interval: 1.0DEG
 Test System: EVERFINE GO-2000B_V1 SYSTEM V2.0.362
 Humidity: 58%
 Test Distance: 5.850m [K=1.0000]
 Remarks:

