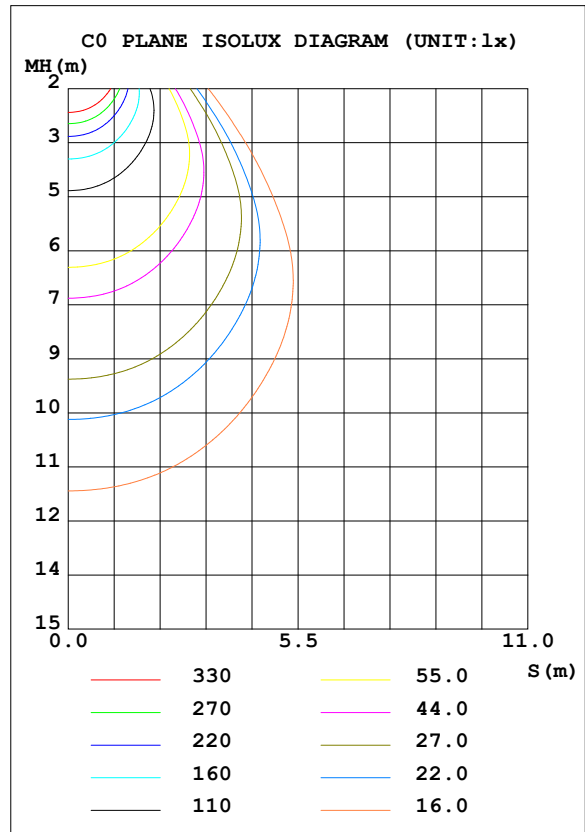
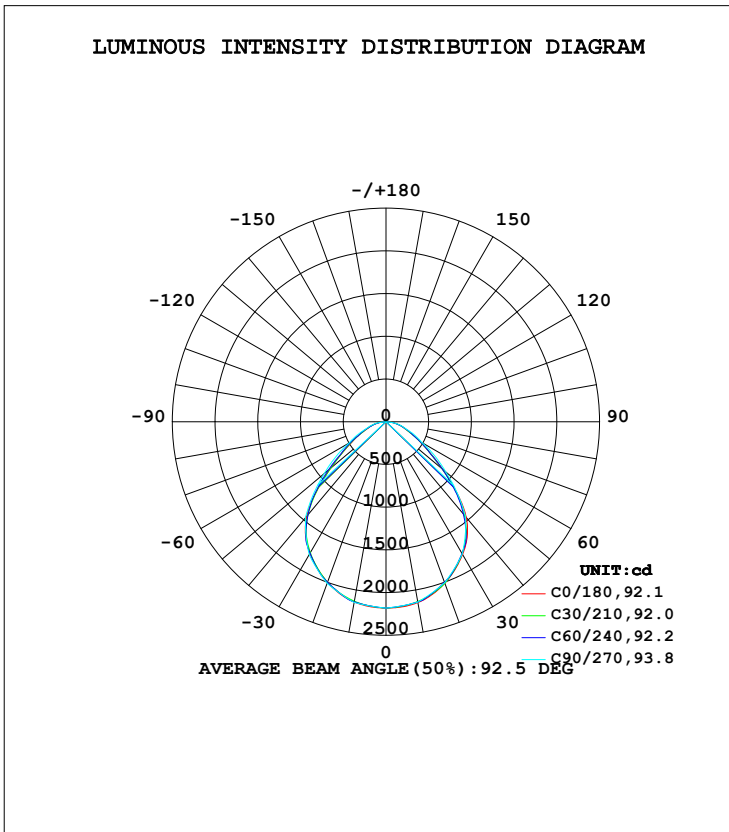


**LUMINAIRE PHOTOMETRIC TEST REPORT**

Test:U:220.9V I:0.1862A P:40.52W PF:0.9852 Freq:49.89Hz Lamp Flux:4740.04x1 lm		
NAME: GAME-600-36W-830	TYPE:Ceiling light	SERIAL No.:
SPEC.:3000K	DIM.: φ600mm*H78mm	
MFR.: NEKO LIGHTING AG		

DATA OF LAMP		PHOTOMETRIC DATA Eff: 116.97 lm/W			
MODEL	OSRAM-3000K	I <sub>max</sub> (cd)	2181	S/MH (C0/180)	1.22
NOMINAL POWER (W)	38	LOR (%)	100.0	S/MH (C90/270)	1.22
RATED VOLTAGE (V)	220	TOTAL FLUX (lm)	4740.0	η UP, DN (C0-180)	0.0,49.8
NOMINAL FLUX (lm)	4740.04	CIE CLASS	DIRECT	η UP, DN (C180-360)	0.0,50.2
LAMPS INSIDE	1	η up (%)	0.0	CIBSE SHR NOM	1.25
TEST VOLTAGE (V)	220	η down (%)	100.0	CIBSE SHR MAX	1.35



H(β) Range:-90 - 90DEG  
 H(β) Interval: 1.0DEG  
 Test Speed: HIGH  
 Temperature:25.3DEG  
 Operators:Myles  
 Test Date:2019-01-05

V(B) Range:-80 - 80DEG  
 V(B) Interval: 5.0DEG  
 Test System:EVERFINE GO-2000B\_V1 SYSTEM V2.0.362  
 Humidity:56%  
 Test Distance:5.850m [K=1.0000]  
 Remarks:

**ZONAL FLUX DIAGRAM**

ZONAL FLUX DIAGRAM:

$\gamma$	C0	C45	C90	C135	C180	C225	C270	C315	$\gamma$	$\Phi$ zone	$\Phi$ total	%lum,lamp
10	2149	2138	2144	2132	2143	2136	2147	2140	0- 10	205.9	205.9	4.34,4.34
20	2012	1999	2006	1992	2001	1994	2013	2007	10- 20	586.9	792.8	16.7,16.7
30	1794	1782	1786	1778	1780	1778	1797	1796	20- 30	875.6	1668	35.2,35.2
40	1464	1447	1449	1442	1442	1440	1466	1474	30- 40	1018	2687	56.7,56.7
50	869.2	844.5	910.2	915.9	847.3	847.3	939.5	939.3	40- 50	902.1	3589	75.7,75.7
60	452.7	442.0	484.2	473.1	442.8	445.0	500.4	486.9	50- 60	581.9	4171	88,88
70	234.7	230.2	252.1	243.8	227.1	229.0	251.1	243.9	60- 70	338.2	4509	95.1,95.1
80	114.0	108.1	120.4	120.5	110.0	105.9	125.1	118.0	70- 80	187.5	4696	99.1,99.1
90	0.6472	0	0	0	0.9679	0	0	0	80- 90	43.83	4740	100,100
100									90-100			
110									100-110			
120									110-120			
130									120-130			
140									130-140			
150									140-150			
160									150-160			
170									160-170			
180									170-180			
DEG	LUMINOUS INTENSITY:cd									UNIT:lm		

Conical surface Flux(90deg): 3173.6 lm

%lum = 67.0%

%lamp = 67.0%

Conical surface Flux(120deg): 4170.6 lm

%lum = 88.0%

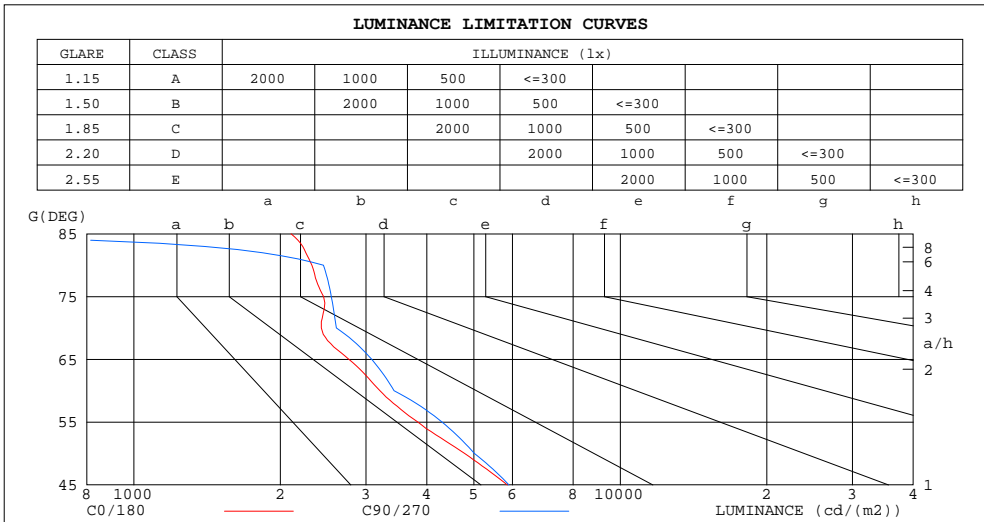
%lamp = 88.0%

H( $\beta$ ) Range:-90 - 90DEG  
H( $\beta$ ) Interval: 1.0DEG  
Test Speed: HIGH  
Temperature:25.3DEG  
Operators:Myles  
Test Date:2019-01-05

V(B) Range:-80 - 80DEG  
V(B) Interval: 5.0DEG  
Test System:EVERFINE GO-2000B\_V1 SYSTEM V2.0.362  
Humidity:56%  
Test Distance:5.850m [K=1.0000]  
Remarks:

**LUMINANCE LIMITATION CURVES**

Test:U:220.9V I:0.1862A P:40.52W PF:0.9852 Freq:49.89Hz Lamp Flux:4740.04x1 lm		
NAME: GAME-600-36W-830	TYPE:Ceiling light	SERIAL No.:
SPEC.:3000K	DIM.: φ600mm*H78mm	
MFR.: NEKO LIGHTING AG		



LUMINANCE cd/(m2)		
G(DEG)	C0/180	C90/270
85	2104	0
80	2323	2453
75	2454	2546
70	2429	2608
65	2767	3082
60	3204	3427
55	3834	4301
50	4785	5011
45	5859	5902

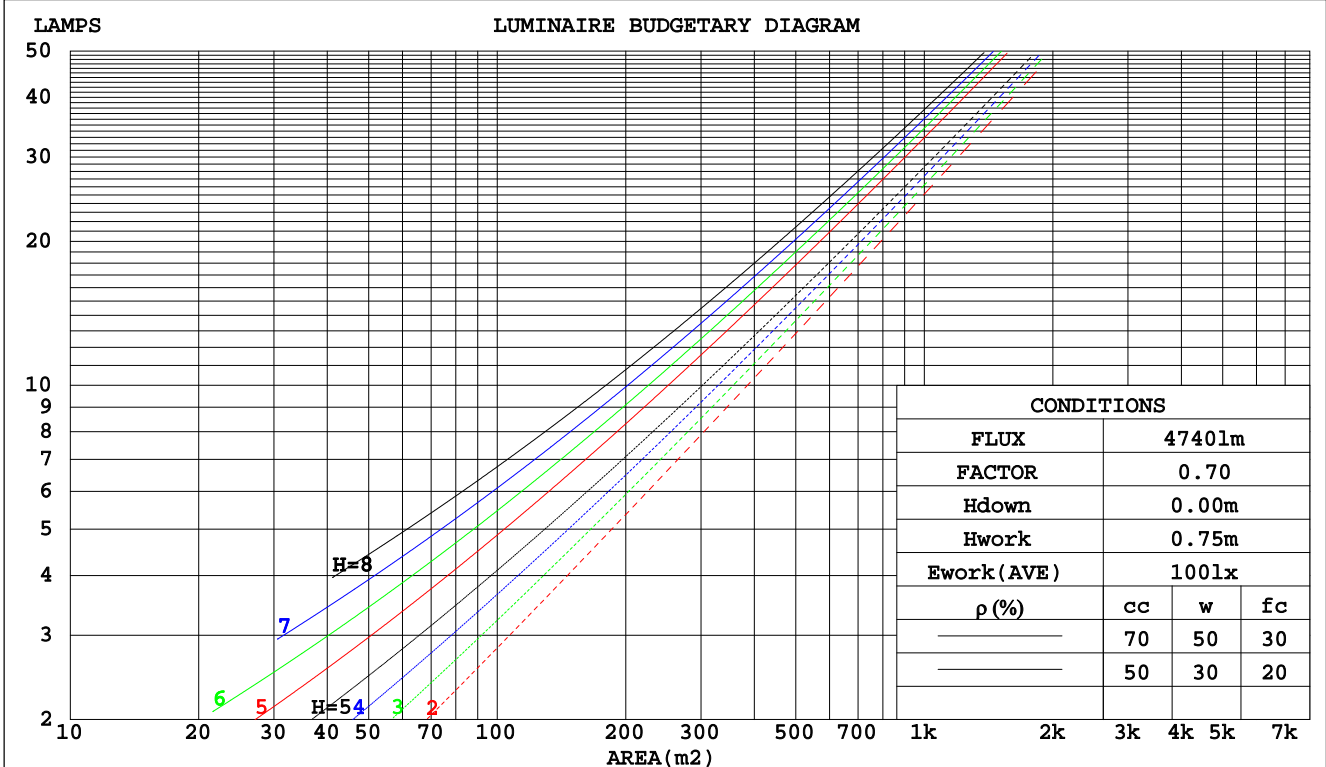
H( $\beta$ ) Range:-90 - 90DEG  
H( $\beta$ ) Interval: 1.0DEG  
Test Speed: HIGH  
Temperature:25.3DEG  
Operators:Myles  
Test Date:2019-01-05

V(B) Range:-80 - 80DEG  
V(B) Interval: 5.0DEG  
Test System:EVERFINE GO-2000B\_V1 SYSTEM V2.0.362  
Humidity:56%  
Test Distance:5.850m [K=1.0000]  
Remarks:

**CU AND LUMINAIRE BUDGETARY ESTIMATE DIAGRAM**

Test:U:220.9V I:0.1862A P:40.52W PF:0.9852 Freq:49.89Hz Lamp Flux:4740.04x1 lm		
NAME: GAME-600-36W-830	TYPE:Ceiling light	SERIAL No.:
SPEC.:3000K	DIM.: φ600mm*H78mm	
MFR.: NEKO LIGHTING AG		

ρcc	80%			70%			50%			30%			10%			0
ρw	50%	30%	10%	50%	30%	10%	50%	30%	10%	50%	30%	10%	50%	30%	10%	0
ρfc	20%			20%			20%			20%			20%			0
RCR	RCR:Room Cavity Ratio															
	Coefficients of Utilization(CU)															
0.0	1.19	1.19	1.19	1.16	1.16	1.16	1.11	1.11	1.11	1.06	1.06	1.06	1.02	1.02	1.02	1.00
1.0	1.06	1.03	.99	1.04	1.01	.98	.90	.97	.95	.96	.94	.92	.92	.91	.89	.87
2.0	.95	.89	.84	.93	.87	.83	.89	.85	.81	.86	.82	.79	.83	.80	.77	.75
3.0	.84	.77	.71	.83	.76	.71	.80	.74	.70	.77	.72	.68	.75	.71	.67	.65
4.0	.76	.68	.62	.75	.67	.61	.72	.66	.61	.70	.64	.60	.68	.63	.59	.57
5.0	.69	.60	.54	.67	.60	.54	.65	.59	.53	.63	.58	.53	.62	.57	.52	.50
6.0	.62	.54	.48	.61	.54	.48	.60	.53	.48	.58	.52	.47	.56	.51	.47	.45
7.0	.57	.49	.43	.56	.48	.43	.55	.48	.43	.53	.47	.42	.52	.46	.42	.40
8.0	.52	.44	.39	.52	.44	.39	.50	.43	.38	.49	.43	.38	.48	.42	.38	.36
9.0	.48	.40	.35	.48	.40	.35	.46	.40	.35	.45	.39	.35	.44	.39	.35	.33
10.0	.45	.37	.32	.44	.37	.32	.43	.36	.32	.42	.36	.32	.41	.36	.32	.30



H(β) Range:-90 - 90DEG  
H(β) Interval: 1.0DEG  
Test Speed: HIGH  
Temperature:25.3DEG  
Operators:Myles  
Test Date:2019-01-05

V(B) Range:-80 - 80DEG  
V(B) Interval: 5.0DEG  
Test System:EVERFINE GO-2000B\_V1 SYSTEM V2.0.362  
Humidity:56%  
Test Distance:5.850m [K=1.0000]  
Remarks:

WEC AND CCEC

Test:U:220.9V I:0.1862A P:40.52W PF:0.9852 Freq:49.89Hz Lamp Flux:4740.04x1 lm		
NAME: GAME-600-36W-830	TYPE:Ceiling light	SERIAL No.:
SPEC.:3000K	DIM.: φ600mm*H78mm	
MFR.: NEKO LIGHTING AG		

ρcc	80%			70%			50%			30%			10%			0
ρw	50%	30%	10%	50%	30%	10%	50%	30%	10%	50%	30%	10%	50%	30%	10%	0
ρfc	20%			20%			20%			20%			20%			0
RCR	RCR:Room Cavity Ratio						Wall Exitance Coefficients(WEC)									
0.0																
1.0	.264	.150	.048	.257	.147	.047	.244	.140	.045	.232	.134	.043	.221	.128	.041	
2.0	.253	.139	.042	.247	.136	.042	.235	.131	.041	.225	.126	.039	.215	.122	.038	
3.0	.238	.126	.038	.232	.124	.037	.222	.120	.037	.213	.117	.036	.205	.113	.035	
4.0	.222	.116	.034	.218	.114	.034	.209	.111	.033	.201	.108	.033	.193	.105	.032	
5.0	.208	.106	.031	.204	.105	.030	.196	.102	.030	.189	.100	.030	.182	.097	.029	
6.0	.195	.098	.028	.191	.097	.028	.184	.095	.027	.178	.092	.027	.172	.090	.027	
7.0	.183	.091	.026	.180	.090	.026	.174	.088	.025	.168	.086	.025	.162	.084	.025	
8.0	.172	.084	.024	.170	.083	.024	.164	.082	.023	.159	.080	.023	.154	.079	.023	
9.0	.163	.079	.022	.160	.078	.022	.155	.077	.022	.150	.075	.022	.146	.074	.021	
10.0	.154	.074	.020	.152	.073	.020	.147	.072	.020	.143	.071	.020	.139	.070	.020	

ρcc	80%			70%			50%			30%			10%			0
ρw	50%	30%	10%	50%	30%	10%	50%	30%	10%	50%	30%	10%	50%	30%	10%	0
ρfc	20%			20%			20%			20%			20%			0
RCR	RCR:Room Cavity Ratio						Ceiling Cavity Exitance Coefficients(CCEC)									
0.0	.190	.190	.190	.163	.163	.163	.111	.111	.111	.064	.064	.064	.020	.020	.020	
1.0	.177	.157	.138	.152	.134	.119	.104	.092	.082	.060	.053	.048	.019	.017	.015	
2.0	.167	.132	.103	.143	.114	.089	.098	.079	.062	.057	.046	.036	.018	.015	.012	
3.0	.158	.114	.079	.136	.098	.068	.093	.068	.048	.054	.040	.028	.017	.013	.009	
4.0	.150	.100	.062	.129	.087	.054	.089	.060	.038	.051	.035	.023	.017	.012	.007	
5.0	.143	.090	.050	.123	.078	.044	.084	.054	.031	.049	.032	.018	.016	.010	.006	
6.0	.136	.081	.042	.117	.070	.036	.081	.049	.026	.047	.029	.015	.015	.009	.005	
7.0	.130	.074	.035	.111	.064	.031	.077	.045	.022	.045	.027	.013	.014	.009	.004	
8.0	.123	.068	.030	.106	.059	.026	.074	.042	.019	.043	.025	.011	.014	.008	.004	
9.0	.118	.063	.027	.102	.055	.023	.070	.039	.016	.041	.023	.010	.013	.007	.003	
10.0	.113	.059	.023	.097	.051	.020	.067	.036	.015	.039	.021	.009	.013	.007	.003	

H(β) Range:-90 - 90DEG  
H(β) Interval: 1.0DEG  
Test Speed: HIGH  
Temperature:25.3DEG  
Operators:Myles  
Test Date:2019-01-05

V(B) Range:-80 - 80DEG  
V(B) Interval: 5.0DEG  
Test System:EVERFINE GO-2000B\_V1 SYSTEM V2.0.362  
Humidity:56%  
Test Distance:5.850m [K=1.0000]  
Remarks:

UGR(Unified Glare Rating) Table

Test:U:220.9V I:0.1862A P:40.52W PF:0.9852 Freq:49.89Hz Lamp Flux:4740.04x1 lm		
NAME: GAME-600-36W-830	TYPE:Ceiling light	SERIAL No.:
SPEC.:3000K	DIM.: φ600mm*H78mm	
MFR.: NEKO LIGHTING AG		

ceiling/cavity	0.7	0.7	0.5	0.5	0.3	0.7	0.7	0.5	0.5	0.3
walls	0.5	0.3	0.5	0.3	0.3	0.5	0.3	0.5	0.3	0.3
working plane	0.2	0.2	0.2	0.2	0.2	0.2	0.2	0.2	0.2	0.2
Room dimensions	Viewed crosswise					Viewed endwise				
x = 2H y = 2H	11.5	12.9	11.8	13.1	13.3	11.7	13.1	12.0	13.3	13.5
3H	12.2	13.5	12.5	13.7	13.9	12.6	13.8	12.8	14.0	14.3
4H	12.6	13.8	12.9	14.0	14.3	12.9	14.1	13.2	14.4	14.6
6H	12.9	14.0	13.2	14.2	14.5	13.2	14.4	13.6	14.6	14.9
8H	12.9	14.0	13.3	14.3	14.6	13.3	14.4	13.6	14.7	14.9
12H	13.0	14.0	13.3	14.3	14.6	13.3	14.3	13.6	14.6	14.9
4H 2H	11.7	12.9	12.1	13.2	13.4	12.0	13.2	12.3	13.4	13.6
3H	12.7	13.7	13.0	14.0	14.3	13.0	14.0	13.3	14.3	14.6
4H	13.2	14.1	13.6	14.4	14.8	13.5	14.4	13.8	14.7	15.1
6H	13.6	14.5	14.0	14.8	15.2	13.9	14.8	14.3	15.1	15.5
8H	13.8	14.5	14.2	14.9	15.3	14.0	14.8	14.4	15.2	15.5
12H	13.8	14.5	14.2	14.9	15.3	14.0	14.7	14.4	15.1	15.5
8H 4H	13.4	14.1	13.8	14.5	14.9	13.6	14.4	14.0	14.8	15.1
6H	14.0	14.6	14.4	15.0	15.4	14.2	14.8	14.6	15.2	15.7
8H	14.2	14.7	14.6	15.2	15.6	14.3	14.9	14.8	15.3	15.8
12H	14.3	14.8	14.8	15.2	15.7	14.3	14.8	14.8	15.3	15.7
12H 4H	13.4	14.1	13.8	14.5	14.9	13.6	14.3	14.0	14.7	15.1
6H	14.0	14.6	14.5	15.0	15.4	14.2	14.8	14.7	15.2	15.7
8H	14.3	14.7	14.7	15.2	15.7	14.4	14.9	14.9	15.3	15.8
Variations with the observer position at spacings:										
S = 1.0H	+ 0.5 / - 0.5					+ 0.4 / - 0.4				
1.5H	+ 0.3 / - 0.3					+ 0.3 / - 0.3				
2.0H	+ 1.2 / - 0.7					+ 1.0 / - 0.8				

CIE Pub.117, 4740 lm Total Lamp Luminous Flux Correct (8log(F/F0) = 5.4)

H(β) Range:-90 - 90DEG  
H(β) Interval: 1.0DEG  
Test Speed: HIGH  
Temperature:25.3DEG  
Operators:Myles  
Test Date:2019-01-05

V(B) Range:-80 - 80DEG  
V(B) Interval: 5.0DEG  
Test System:EVERFINE GO-2000B\_V1 SYSTEM V2.0.362  
Humidity:56%  
Test Distance:5.850m [K=1.0000]  
Remarks:

**UTILIZATION FACTORS TABLE**

Test:U:220.9V I:0.1862A P:40.52W PF:0.9852 Freq:49.89Hz Lamp Flux:4740.04x1 lm		
NAME: GAME-600-36W-830	TYPE:Ceiling light	SERIAL No.:
SPEC.:3000K	DIM.: φ600mm*H78mm	
MFR.: NEKO LIGHTING AG		

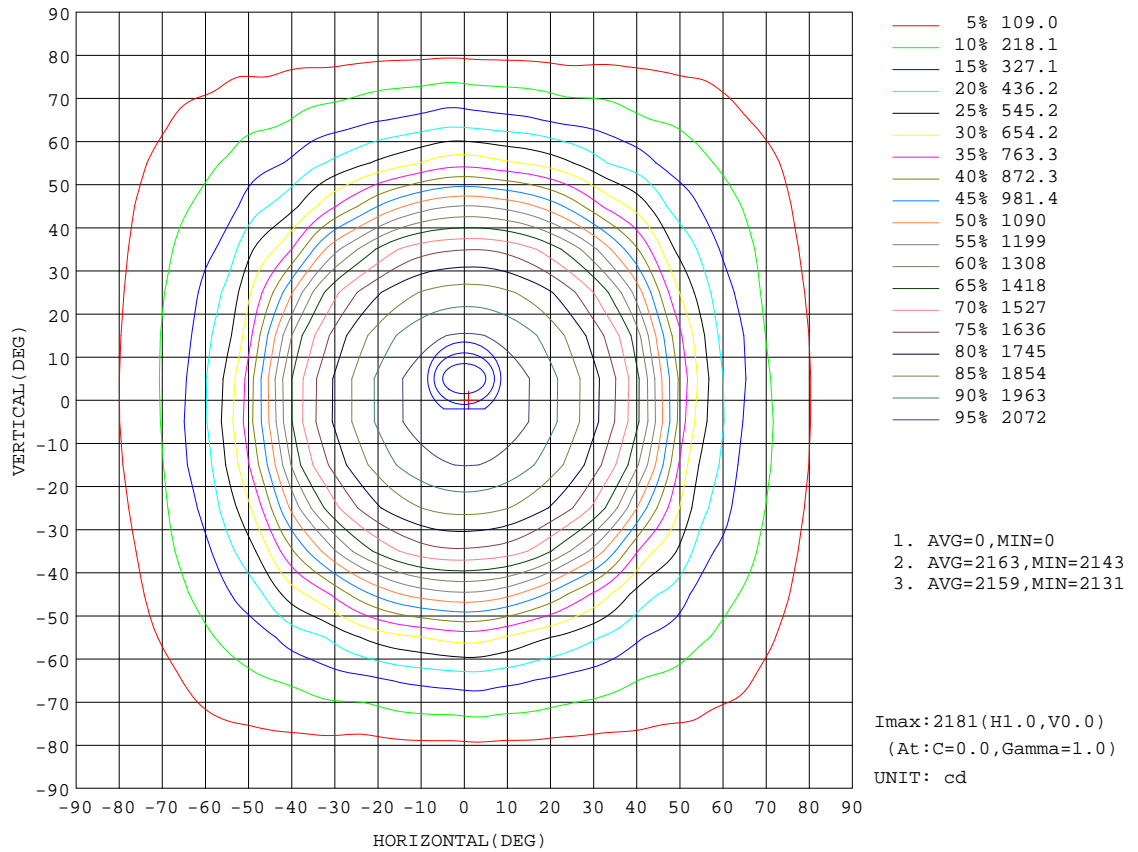
REFLECTANCE										
Ceiling	0.8	0.8	0.8	0.7	0.7	0.7	0.5	0.5	0.5	0
Walls	0.7	0.5	0.3	0.7	0.5	0.3	0.7	0.5	0.3	0
Working plane	0.2	0.2	0.2	0.2	0.2	0.2	0.2	0.2	0.2	0
ROOM INDEX	UTILIZATION FACTORS(PERCENT) k(RI) x RCR = 5									
k = 0.60	64	54	48	64	54	48	63	53	48	42
0.80	74	64	58	74	64	58	72	63	57	51
1.00	82	73	67	81	72	66	79	73	66	60
1.25	89	80	74	88	79	74	85	78	73	66
1.50	94	85	79	92	84	79	89	83	78	71
2.00	99	92	87	98	91	86	94	89	85	78
2.50	103	96	91	101	95	90	97	92	88	81
3.00	105	100	95	103	98	94	99	95	92	84
4.00	109	104	100	106	102	99	102	99	96	88
5.00	111	106	103	108	105	101	104	101	98	90
ROOM INDEX	UF(total)									Direct
According to DIN EN 13032-2 2004			Suspended				SHRNOM = 1.25			

H(β) Range:-90 - 90DEG  
H(β) Interval: 1.0DEG  
Test Speed: HIGH  
Temperature:25.3DEG  
Operators:Myles  
Test Date:2019-01-05

V(B) Range:-80 - 80DEG  
V(B) Interval: 5.0DEG  
Test System:EVERFINE GO-2000B\_V1 SYSTEM V2.0.362  
Humidity:56%  
Test Distance:5.850m [K=1.0000]  
Remarks:

**ISOCANDELA DIAGRAM**

Test:U:220.9V I:0.1862A P:40.52W PF:0.9852 Freq:49.89Hz Lamp Flux:4740.04x1 lm		
NAME: GAME-600-36W-830	TYPE:Ceiling light	SERIAL No.:
SPEC.:3000K	DIM.: φ600mm*H78mm	
MFR.: NEKO LIGHTING AG		



H(β) Range:-90 - 90DEG  
 H(β) Interval: 1.0DEG  
 Test Speed: HIGH  
 Temperature:25.3DEG  
 Operators:Myles  
 Test Date:2019-01-05

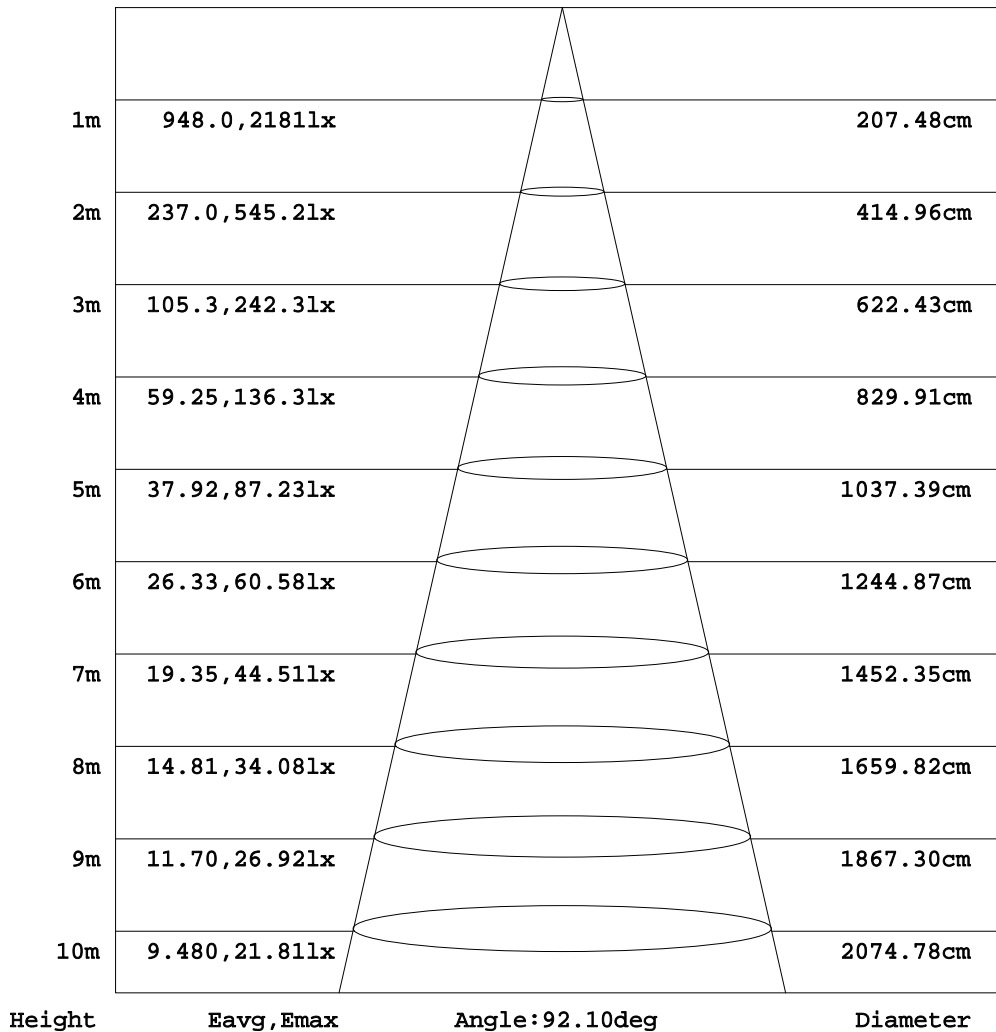
V(B) Range:-80 - 80DEG  
 V(B) Interval: 5.0DEG  
 Test System:EVERFINE GO-2000B\_V1 SYSTEM V2.0.362  
 Humidity:56%  
 Test Distance:5.850m [K=1.0000]  
 Remarks:



**AAI Figure**

Test:U:220.9V I:0.1862A P:40.52W PF:0.9852 Freq:49.89Hz Lamp Flux:4740.04x1 lm		
NAME: GAME-600-36W-830	TYPE:Ceiling light	SERIAL No.:
SPEC.:3000K	DIM.: φ600mm*H78mm	
MFR.: NEKO LIGHTING AG		

Flux out:3307 lm



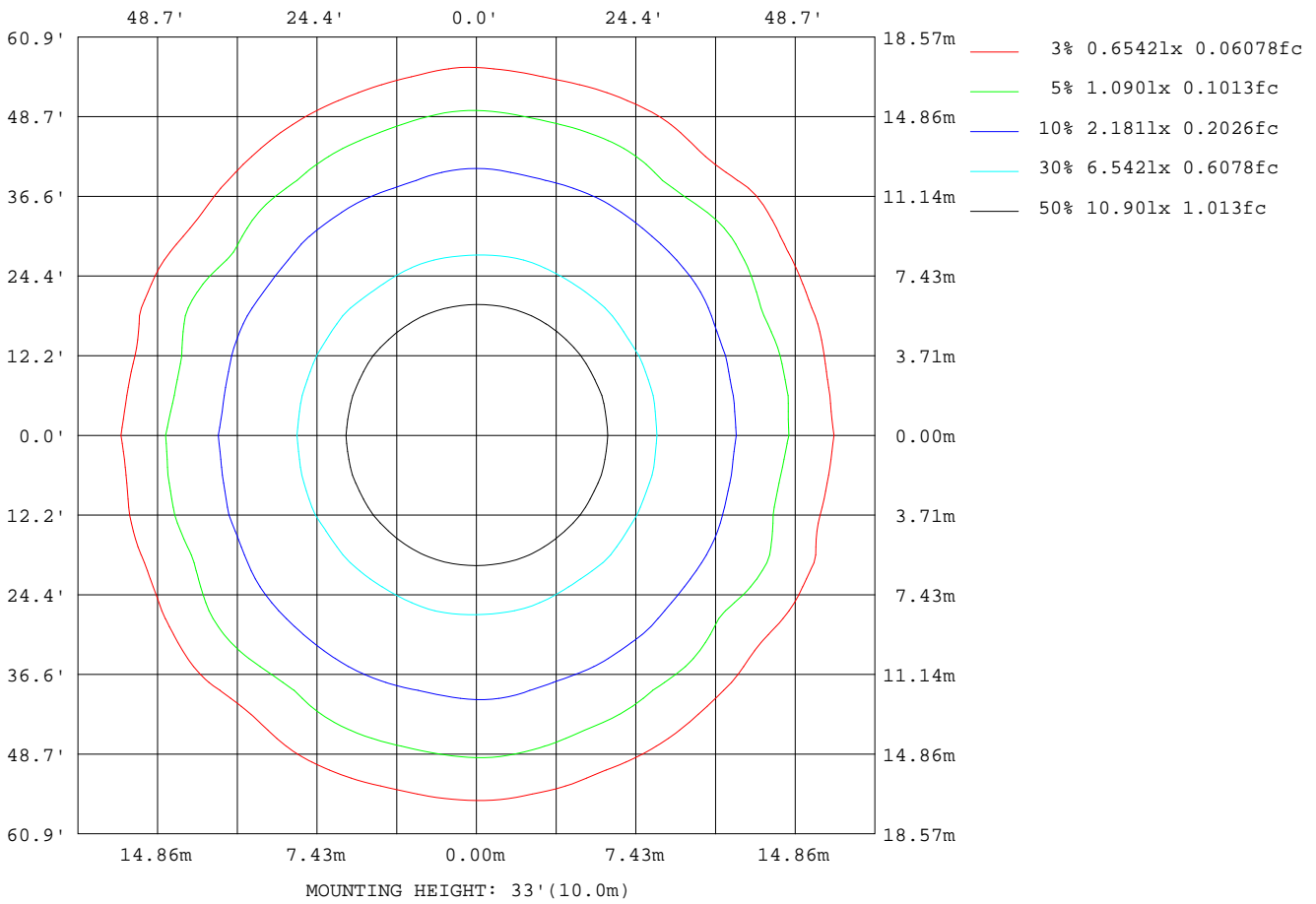
Note:The Curves indicate the illuminated area and the average illumination when the luminaire is at different distance.

H(β) Range:-90 - 90DEG  
H(β) Interval: 1.0DEG  
Test Speed: HIGH  
Temperature:25.3DEG  
Operators:Myles  
Test Date:2019-01-05

V(B) Range:-80 - 80DEG  
V(B) Interval: 5.0DEG  
Test System:EVERFINE GO-2000B\_V1 SYSTEM V2.0.362  
Humidity:56%  
Test Distance:5.850m [K=1.0000]  
Remarks:

**ISOLUX DIAGRAM**

Test:U:220.9V I:0.1862A P:40.52W PF:0.9852 Freq:49.89Hz Lamp Flux:4740.04x1 lm		
NAME: GAME-600-36W-830	TYPE:Ceiling light	SERIAL No.:
SPEC.:3000K	DIM.: φ600mm*H78mm	
MFR.: NEKO LIGHTING AG		



H( $\beta$ ) Range:-90 - 90DEG  
H( $\beta$ ) Interval: 1.0DEG  
Test Speed: HIGH  
Temperature:25.3DEG  
Operators:Myles  
Test Date:2019-01-05

V(B) Range:-80 - 80DEG  
V(B) Interval: 5.0DEG  
Test System:EVERFINE GO-2000B\_V1 SYSTEM V2.0.362  
Humidity:56%  
Test Distance:5.850m [K=1.0000]  
Remarks:

LED Avg.L Report

Test:U:220.9V I:0.1862A P:40.52W PF:0.9852 Freq:49.89Hz Lamp Flux:4740.04x1 lm		
NAME: GAME-600-36W-830	TYPE:Ceiling light	SERIAL No.:
SPEC.:3000K	DIM.: φ600mm*H78mm	
MFR.: NEKO LIGHTING AG		

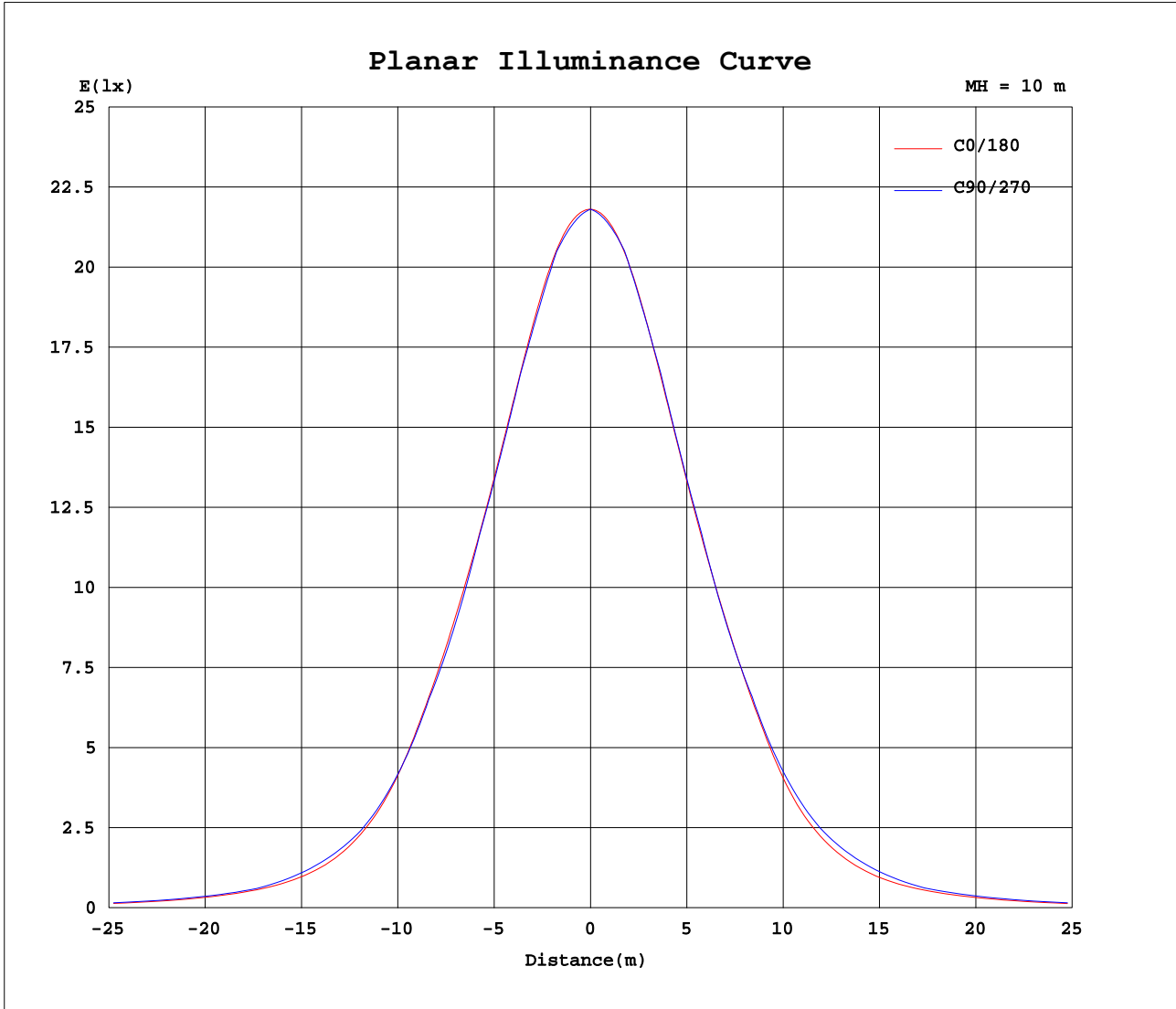
AvgL	cd/m2
L_0~180 (65) av	2751
L_0~180 (75) av	2424
L_0~180 (85) av	2060
L_90~270 (65) av	3114
L_90~270 (75) av	2559
L_90~270 (85) av	0
L_45 (65) av	2781
L_45 (75) av	2420
L_45 (85) av	1278

Standard: GB/T 29293-2012

H( $\beta$ ) Range:-90 - 90DEG  
H( $\beta$ ) Interval: 1.0DEG  
Test Speed: HIGH  
Temperature:25.3DEG  
Operators:Myles  
Test Date:2019-01-05

V(B) Range:-80 - 80DEG  
V(B) Interval: 5.0DEG  
Test System:EVERFINE GO-2000B\_V1 SYSTEM V2.0.362  
Humidity:56%  
Test Distance:5.850m [K=1.0000]  
Remarks:

Planar Illuminance Curve



H( $\beta$ ) Range:-90 - 90DEG  
H( $\beta$ ) Interval: 1.0DEG  
Test Speed: HIGH  
Temperature:25.3DEG  
Operators:Myles  
Test Date:2019-01-05

V(B) Range:-80 - 80DEG  
V(B) Interval: 5.0DEG  
Test System:EVERFINE GO-2000B\_V1 SYSTEM V2.0.362  
Humidity:56%  
Test Distance:5.850m [K=1.0000]  
Remarks:

**LUMINOUS DISTRIBUTION INTENSITY DATA**

Test:U:220.9V I:0.1862A P:40.52W PF:0.9852 Freq:49.89Hz Lamp Flux:4740.04x1 lm		
NAME: GAME-600-36W-830	TYPE:Ceiling light	SERIAL No.:
SPEC.:3000K	DIM.: φ600mm*H78mm	
MFR.: NEKO LIGHTING AG		

Table--1

UNIT: cd

γ (DEG) \ C (DEG)																			
	0	5	10	15	20	25	30	35	40	45	50	55	60	65	70	75	80	85	90
0	2181	2181	2181	2181	2181	2181	2181	2181	2181	2181	2181	2181	2181	2181	2181	2181	2181	2181	2181
5	2175	2173	2172	2170	2169	2168	2167	2166	2166	2165	2165	2164	2164	2164	2163	2163	2163	2162	2162
10	2149	2145	2142	2140	2139	2138	2137	2137	2138	2138	2140	2141	2142	2143	2144	2144	2144	2144	2144
15	2094	2088	2085	2083	2082	2083	2085	2088	2092	2089	2086	2083	2081	2080	2078	2077	2076	2076	2075
20	2012	2006	2003	2003	2005	2009	2012	2006	2002	1999	1998	1999	2000	2001	2003	2005	2006	2006	2006
25	1910	1904	1902	1905	1912	1911	1905	1902	1901	1902	1904	1902	1900	1899	1898	1897	1897	1896	1896
30	1794	1786	1785	1790	1790	1783	1782	1786	1789	1782	1779	1779	1780	1782	1784	1785	1785	1786	1786
35	1656	1643	1641	1646	1632	1628	1634	1632	1630	1634	1641	1649	1636	1628	1625	1622	1618	1616	1618
40	1464	1452	1456	1446	1435	1440	1430	1432	1444	1447	1417	1404	1410	1425	1439	1446	1445	1445	1449
45	1171	1171	1199	1175	1168	1159	1160	1185	1172	1153	1130	1123	1146	1163	1168	1171	1175	1178	1179
50	869	846	848	849	861	863	856	842	837	844	858	855	861	862	855	866	890	908	910
55	621	589	575	583	630	649	616	564	580	610	616	607	619	628	631	652	675	694	697
60	453	444	441	438	461	453	454	436	432	442	448	456	458	457	455	467	471	481	484
65	330	314	315	326	309	292	319	322	324	318	324	333	330	333	340	352	358	369	368
70	235	238	243	247	242	241	239	244	243	230	239	247	245	248	254	254	253	260	252
75	179	166	168	179	176	180	175	178	173	170	175	171	171	174	179	183	182	190	186
80	114	107	105	107	111	119	112	118	111	108	111	105	108	107	107	116	113	120	120
85	51.8	32.6	36.0	40.7	46.9	50.7	53.6	45.7	37.3	30.3	24.5	17.9	13.9	9.79	6.25	3.90	1.70	0.45	0.00
90	0.65	0.00	0.00	0.00	0.00	0.00	0.00	0.00	0.00	0.00	0.00	0.00	0.00	0.00	0.00	0.00	0.00	0.00	0.00

H(β) Range:-90 - 90DEG  
 H(β) Interval: 1.0DEG  
 Test Speed: HIGH  
 Temperature:25.3DEG  
 Operators:Myles  
 Test Date:2019-01-05

V(B) Range:-80 - 80DEG  
 V(B) Interval: 5.0DEG  
 Test System:EVERFINE GO-2000B\_V1 SYSTEM V2.0.362  
 Humidity:56%  
 Test Distance:5.850m [K=1.0000]  
 Remarks:

LUMINOUS DISTRIBUTION INTENSITY DATA

Test:U:220.9V I:0.1862A P:40.52W PF:0.9852 Freq:49.89Hz Lamp Flux:4740.04x1 lm		
NAME: GAME-600-36W-830	TYPE:Ceiling light	SERIAL No.:
SPEC.:3000K	DIM.: $\phi$ 600mm*H78mm	
MFR.: NEKO LIGHTING AG		

Table--2 UNIT: cd

C (DEG)\y (DEG)	95	100	105	110	115	120	125	130	135	140	145	150	155	160	165	170	175	180	185
0	2181	2181	2181	2181	2181	2181	2181	2181	2181	2181	2181	2181	2181	2181	2181	2181	2181	2181	2181
5	2162	2162	2162	2162	2162	2162	2162	2162	2162	2163	2163	2164	2165	2166	2167	2169	2170	2172	2170
10	2143	2142	2141	2139	2138	2137	2135	2133	2132	2131	2131	2130	2131	2132	2133	2136	2139	2143	2139
15	2074	2074	2074	2074	2074	2075	2076	2078	2081	2082	2078	2075	2073	2072	2073	2075	2079	2085	2080
20	2005	2004	2001	1999	1997	1995	1993	1992	1992	1994	1995	1999	1996	1991	1990	1991	1994	2001	1995
25	1896	1896	1895	1895	1895	1897	1901	1903	1898	1894	1892	1891	1895	1894	1889	1887	1890	1898	1891
30	1787	1786	1784	1782	1779	1778	1777	1777	1778	1782	1775	1769	1768	1774	1774	1769	1771	1780	1770
35	1621	1625	1626	1627	1629	1636	1646	1634	1625	1620	1624	1629	1622	1623	1634	1627	1628	1639	1624
40	1455	1459	1457	1448	1437	1429	1428	1432	1442	1434	1423	1430	1448	1436	1434	1432	1427	1442	1428
45	1179	1181	1188	1194	1196	1197	1195	1187	1182	1180	1179	1174	1181	1176	1145	1130	1124	1146	1137
50	898	890	897	909	918	920	918	916	916	916	913	895	874	867	852	835	832	847	817
55	688	678	677	681	680	663	638	644	668	688	687	651	606	604	618	610	606	609	575
60	481	475	476	485	490	489	471	460	473	487	475	465	454	447	443	431	427	443	431
65	362	357	354	349	344	347	335	332	341	336	316	331	336	322	321	328	331	327	309
70	245	248	250	238	230	246	255	248	244	249	255	248	243	240	239	232	226	227	230
75	181	182	179	168	158	171	184	181	187	185	186	188	181	172	171	167	170	175	167
80	118	118	115	112	107	113	117	118	120	119	122	124	115	102	99.1	91.2	93.2	110	108
85	0.45	1.78	3.88	6.74	10.0	14.9	20.3	27.0	33.2	42.1	50.4	57.1	52.5	45.2	40.9	34.5	30.5	49.6	50.5
90	0.00	0.00	0.00	0.00	0.00	0.00	0.00	0.00	0.00	0.00	0.00	0.00	0.00	0.00	0.00	0.00	0.00	0.97	0.00

H( $\beta$ ) Range:-90 - 90DEG	V(B) Range:-80 - 80DEG
H( $\beta$ ) Interval: 1.0DEG	V(B) Interval: 5.0DEG
Test Speed: HIGH	Test System:EVERFINE GO-2000B_V1 SYSTEM V2.0.362
Temperature:25.3DEG	Humidity:56%
Operators:Myles	Test Distance:5.850m [K=1.0000]
Test Date:2019-01-05	Remarks:

LUMINOUS DISTRIBUTION INTENSITY DATA

Test:U:220.9V I:0.1862A P:40.52W PF:0.9852 Freq:49.89Hz Lamp Flux:4740.04x1 lm		
NAME: GAME-600-36W-830	TYPE:Ceiling light	SERIAL No.:
SPEC.:3000K	DIM.: φ600mm*H78mm	
MFR.: NEKO LIGHTING AG		

Table--3

UNIT: cd

C (DEG) γ (DEG)	190	195	200	205	210	215	220	225	230	235	240	245	250	255	260	265	270	275	280
0	2181	2181	2181	2181	2181	2181	2181	2181	2181	2181	2181	2181	2181	2181	2181	2181	2181	2181	2181
5	2169	2168	2167	2166	2165	2165	2164	2164	2164	2164	2164	2164	2164	2164	2164	2164	2164	2164	2164
10	2137	2134	2133	2133	2133	2133	2134	2136	2137	2139	2141	2142	2144	2145	2146	2147	2147	2148	2147
15	2076	2074	2073	2075	2077	2081	2086	2084	2082	2081	2080	2079	2079	2079	2080	2080	2080	2081	2081
20	1991	1991	1993	1997	2001	1997	1995	1994	1995	1997	1999	2002	2005	2008	2010	2012	2013	2013	2012
25	1888	1890	1896	1896	1893	1892	1894	1897	1903	1901	1900	1900	1901	1901	1902	1903	1905	1906	1907
30	1767	1771	1772	1768	1770	1778	1783	1778	1776	1777	1779	1783	1787	1790	1792	1794	1797	1799	1800
35	1619	1623	1614	1615	1625	1623	1622	1627	1635	1645	1636	1633	1632	1631	1629	1629	1631	1636	1641
40	1430	1424	1420	1429	1421	1423	1437	1440	1416	1410	1421	1439	1455	1460	1462	1462	1466	1473	1478
45	1156	1145	1155	1150	1145	1170	1166	1154	1138	1139	1167	1186	1190	1191	1195	1199	1203	1204	1206
50	813	826	844	851	845	831	834	847	868	870	880	887	883	891	914	932	939	932	919
55	561	568	615	638	613	568	581	614	624	621	635	648	655	670	693	714	720	710	697
60	430	430	451	448	453	442	437	445	457	465	468	471	471	476	481	498	500	491	482
65	313	320	305	291	319	327	326	320	334	341	335	342	350	356	364	379	376	365	359
70	238	243	238	245	239	248	239	229	245	248	243	252	259	252	254	263	251	242	245
75	162	175	176	175	172	183	170	165	179	170	167	176	183	183	184	193	188	181	180
80	115	117	119	122	115	121	112	106	113	108	108	110	110	118	117	123	125	121	117
85	53.0	55.3	56.8	56.9	56.8	48.2	39.2	30.5	25.2	18.7	14.2	10.1	6.47	3.99	1.76	0.47	0.00	0.46	1.76
90	0.00	0.00	0.00	0.00	0.00	0.00	0.00	0.00	0.00	0.00	0.00	0.00	0.00	0.00	0.00	0.00	0.00	0.00	0.00

H(β) Range:-90 - 90DEG  
 H(β) Interval: 1.0DEG  
 Test Speed: HIGH  
 Temperature:25.3DEG  
 Operators:Myles  
 Test Date:2019-01-05

V(B) Range:-80 - 80DEG  
 V(B) Interval: 5.0DEG  
 Test System:EVERFINE GO-2000B\_V1 SYSTEM V2.0.362  
 Humidity:56%  
 Test Distance:5.850m [K=1.0000]  
 Remarks:

LUMINOUS DISTRIBUTION INTENSITY DATA

Test:U:220.9V I:0.1862A P:40.52W PF:0.9852 Freq:49.89Hz Lamp Flux:4740.04x1 lm		
NAME: GAME-600-36W-830	TYPE:Ceiling light	SERIAL No.:
SPEC.:3000K	DIM.: φ600mm*H78mm	
MFR.: NEKO LIGHTING AG		

Table--4

UNIT: cd

γ (DEG) \ C (DEG)	285	290	295	300	305	310	315	320	325	330	335	340	345	350	355				
0	2181	2181	2181	2181	2181	2181	2181	2181	2181	2181	2181	2181	2181	2181	2181				
5	2164	2165	2165	2165	2165	2165	2166	2166	2167	2168	2168	2169	2171	2172	2173				
10	2147	2146	2145	2143	2142	2141	2140	2139	2139	2139	2139	2140	2141	2143	2146				
15	2081	2082	2083	2085	2087	2090	2093	2096	2092	2089	2086	2085	2085	2086	2089				
20	2011	2009	2008	2007	2006	2006	2007	2009	2012	2017	2013	2008	2005	2004	2007				
25	1907	1908	1908	1911	1914	1917	1913	1911	1909	1910	1915	1915	1908	1904	1905				
30	1799	1797	1796	1795	1795	1795	1796	1799	1794	1789	1790	1797	1796	1789	1789				
35	1644	1646	1650	1659	1671	1660	1650	1644	1646	1649	1644	1649	1663	1653	1650				
40	1479	1472	1463	1455	1454	1461	1474	1466	1455	1456	1471	1465	1469	1468	1456				
45	1213	1221	1224	1224	1220	1213	1212	1217	1220	1211	1212	1203	1181	1177	1159				
50	924	934	943	946	942	938	939	940	943	934	905	889	875	864	861				
55	696	699	701	686	659	661	683	702	695	666	624	621	634	633	628				
60	484	493	499	501	485	470	487	505	485	471	468	462	452	439	438				
65	358	355	347	354	345	340	349	348	326	338	341	330	336	340	345				
70	250	244	236	250	262	254	244	250	262	248	244	244	244	233	229				
75	179	172	162	173	189	185	186	186	188	189	179	176	177	176	176				
80	114	113	109	113	117	118	118	117	122	124	116	111	114	109	108				
85	3.84	6.75	10.2	14.8	19.9	26.5	31.8	41.0	48.3	54.6	52.8	49.8	51.3	48.3	49.9				
90	0.00	0.00	0.00	0.00	0.00	0.00	0.00	0.00	0.00	0.00	0.00	0.00	0.00	0.00	0.00				

H(β) Range:-90 - 90DEG	V(B) Range:-80 - 80DEG
H(β) Interval: 1.0DEG	V(B) Interval: 5.0DEG
Test Speed: HIGH	Test System:EVERFINE GO-2000B_V1 SYSTEM V2.0.362
Temperature:25.3DEG	Humidity:56%
Operators:Myles	Test Distance:5.850m [K=1.0000]
Test Date:2019-01-05	Remarks: