

LED Ceiling Light GAME-350-12W-930



Light Output Ratio:	100.0%	
Luminaire Power:	13.22 W	
SHR Nominal:	1.25	Calculated using the TM5
SHR Maximum:	1.35	fine grid method.

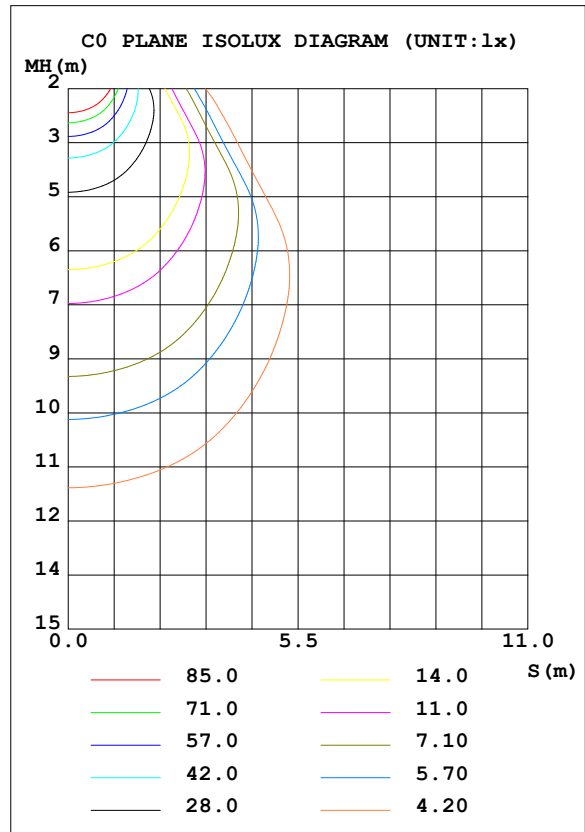
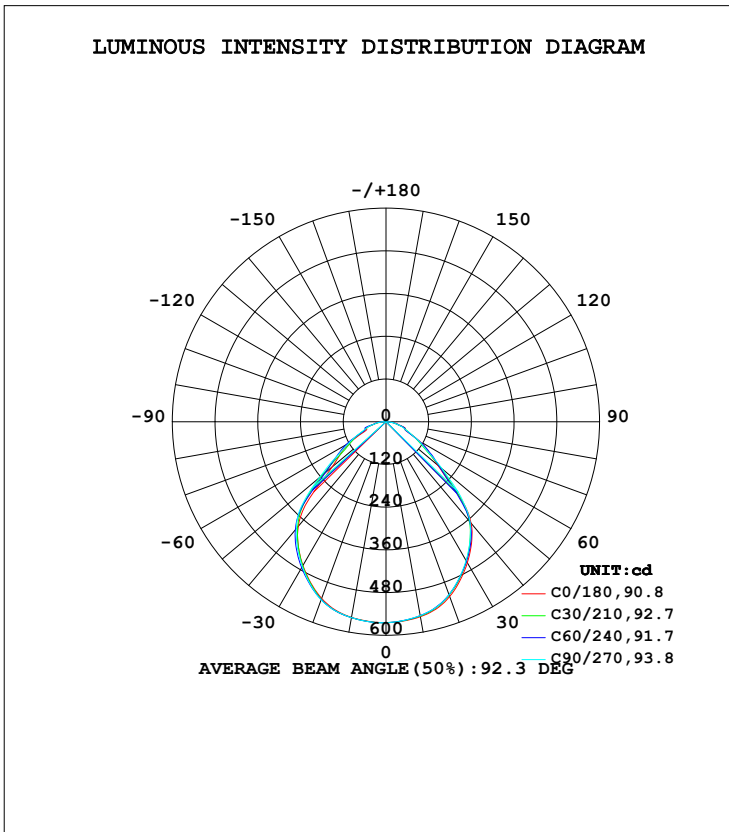
C Range: 0 - 360DEG  
 C Interval: 15.0DEG  
 Test Speed: HIGH  
 Temperature: 25.3DEG  
 Operators: Jason  
 Test Date: 2020-06-16

$\gamma$  Range: 0 - 90DEG  
 $\gamma$  Interval: 1.0DEG  
 Test System: EVERFINE GO-2000B\_V1 SYSTEM V2.0.362  
 Humidity: 58%  
 Test Distance: 5.850m [K=1.0000]  
 Remarks:

**LUMINAIRE PHOTOMETRIC TEST REPORT**

Test:U:220.4V I:0.0645A P:13.22W PF:0.9045 Freq:49.90Hz Lamp Flux:1204.5x1 lm		
NAME: GAME-350-12W-930	TYPE:Ceiling light	SERIAL No.:
SPEC.:4000K	DIM.: φ350mm*H78mm	
MFR.: NEKO LIGHTING AG		

DATA OF LAMP		PHOTOMETRIC DATA			
MODEL	OSRAM-4000K	Imax (cd)	564.7	S/MH (C0/180)	1.23
NOMINAL POWER (W)	14	LOR (%)	100.0	S/MH (C90/270)	1.24
RATED VOLTAGE (V)	220	TOTAL FLUX (lm)	1204.5	η UP, DN (C0-180)	0.0, 48.4
NOMINAL FLUX (lm)	1204.5	CIE CLASS	DIRECT	η UP, DN (C180-360)	0.0, 51.6
LAMPS INSIDE	1	η up (%)	0.0	CIBSE SHR NOM	1.25
TEST VOLTAGE (V)	220	η down (%)	100.0	CIBSE SHR MAX	1.35



C Range: 0 - 360DEG  
 C Interval: 15.0DEG  
 Test Speed: HIGH  
 Temperature: 25.3DEG  
 Operators: Jason  
 Test Date: 2020-06-16

γ Range: 0 - 90DEG  
 γ Interval: 1.0DEG  
 Test System: EVERFINE GO-2000B\_V1 SYSTEM V2.0.362  
 Humidity: 58%  
 Test Distance: 5.850m [K=1.0000]  
 Remarks:

**ZONAL FLUX DIAGRAM**

ZONAL FLUX DIAGRAM:

$\gamma$	C0	C45	C90	C135	C180	C225	C270	C315	$\gamma$	$\Phi$ zone	$\Phi$ total	%lum,lamp
10	556.1	553.6	553.1	554.9	558.2	558.8	558.8	558.2	0- 10	53.48	53.48	4.44,4.44
20	522.7	518.3	517.4	520.7	528.2	531.0	532.5	529.5	10- 20	153.7	207.2	17.2,17.2
30	457.2	455.9	450.1	453.3	466.6	472.2	470.6	465.4	20- 30	228.1	435.3	36.1,36.1
40	371.7	365.0	367.2	366.7	383.7	393.3	392.2	381.1	30- 40	264.0	699.3	58.1,58.1
50	190.1	183.2	206.1	191.5	197.9	211.8	244.0	224.3	40- 50	228.7	927.9	77,77
60	107.5	109.0	104.5	94.42	116.2	129.5	121.4	100.1	50- 60	134.3	1062	88.2,88.2
70	57.00	59.23	53.48	51.20	57.83	64.60	62.31	59.97	60- 70	79.43	1142	94.8,94.8
80	30.50	28.89	24.73	24.04	33.20	34.91	30.78	29.48	70- 80	46.94	1189	98.7,98.7
90	0.2292	0.2318	0.2297	0.2298	0.4476	2.149	2.271	1.263	80- 90	15.89	1205	100,100
100									90-100			
110									100-110			
120									110-120			
130									120-130			
140									130-140			
150									140-150			
160									150-160			
170									160-170			
180									170-180			
DEG	LUMINOUS INTENSITY:cd									UNIT:lm		

Conical surface Flux(90deg): 826.51 lm

%lum = 68.6%  
%lamp = 68.6%

Conical surface Flux(120deg): 1062.2 lm

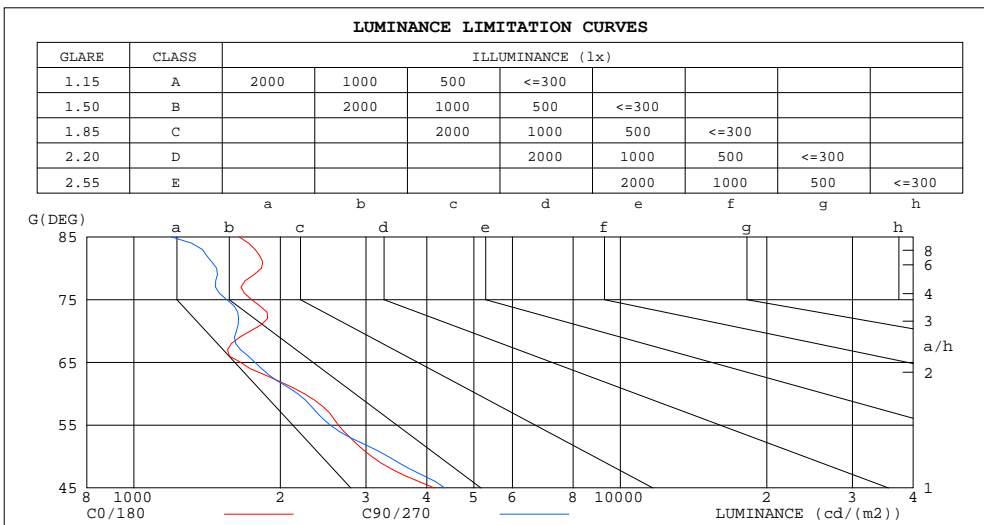
%lum = 88.2%  
%lamp = 88.2%

C Range: 0 - 360DEG  
C Interval: 15.0DEG  
Test Speed: HIGH  
Temperature:25.3DEG  
Operators:Jason  
Test Date:2020-06-16

$\gamma$  Range: 0 - 90DEG  
 $\gamma$  Interval: 1.0DEG  
Test System:EVERFINE GO-2000B\_V1 SYSTEM V2.0.362  
Humidity:58%  
Test Distance:5.850m [K=1.0000]  
Remarks:

**LUMINANCE LIMITATION CURVES**

Test:U:220.4V I:0.0645A P:13.22W PF:0.9045 Freq:49.90Hz Lamp Flux:1204.5x1 lm		
NAME: GAME-350-12W-930	TYPE:Ceiling light	SERIAL No.:
SPEC.:4000K	DIM.: φ350mm*H78mm	
MFR.: NEKO LIGHTING AG		



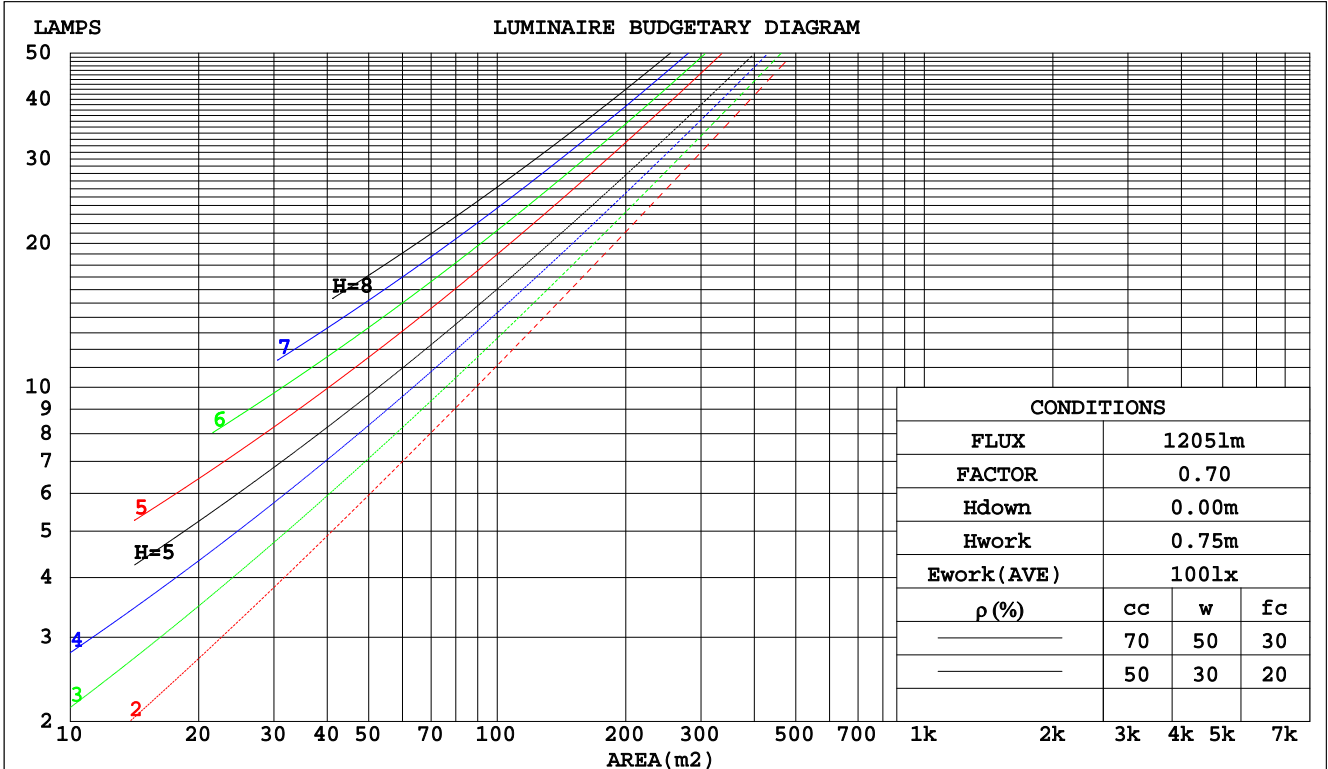
C Range: 0 - 360DEG  
 C Interval: 15.0DEG  
 Test Speed: HIGH  
 Temperature:25.3DEG  
 Operators:Jason  
 Test Date:2020-06-16

γ Range: 0 - 90DEG  
 γ Interval: 1.0DEG  
 Test System:EVERFINE GO-2000B\_V1 SYSTEM V2.0.362  
 Humidity:58%  
 Test Distance:5.850m [K=1.0000]  
 Remarks:

**CU AND LUMINAIRE BUDGETARY ESTIMATE DIAGRAM**

Test:U:220.4V I:0.0645A P:13.22W PF:0.9045 Freq:49.90Hz Lamp Flux:1204.5x1 lm		
NAME: GAME-350-12W-930	TYPE:Ceiling light	SERIAL No.:
SPEC.:4000K	DIM.: φ350mm*H78mm	
MFR.: NEKO LIGHTING AG		

pcc	80%			70%			50%			30%			10%			0
ρw	50%	30%	10%	50%	30%	10%	50%	30%	10%	50%	30%	10%	50%	30%	10%	0
ρfc	20%			20%			20%			20%			20%			0
RCR	RCR:Room Cavity Ratio															
	Coefficients of Utilization(CU)															
0.0	1.19	1.19	1.19	1.16	1.16	1.16	1.11	1.11	1.11	1.06	1.06	1.06	1.02	1.02	1.02	1.00
1.0	1.06	1.03	.99	1.04	1.01	.98	.90	.97	.95	.96	.94	.92	.92	.91	.89	.87
2.0	.95	.89	.84	.93	.87	.83	.89	.85	.81	.86	.82	.79	.83	.80	.77	.75
3.0	.85	.78	.72	.83	.77	.71	.80	.75	.70	.78	.73	.69	.75	.71	.68	.66
4.0	.76	.68	.62	.75	.68	.62	.73	.66	.61	.70	.65	.60	.68	.64	.60	.58
5.0	.69	.61	.55	.68	.60	.55	.66	.59	.54	.64	.58	.54	.62	.57	.53	.51
6.0	.63	.55	.49	.62	.54	.49	.60	.53	.48	.59	.52	.48	.57	.52	.47	.46
7.0	.57	.49	.44	.57	.49	.44	.55	.48	.43	.54	.48	.43	.52	.47	.43	.41
8.0	.53	.45	.39	.52	.45	.39	.51	.44	.39	.50	.43	.39	.48	.43	.39	.37
9.0	.49	.41	.36	.48	.41	.36	.47	.40	.36	.46	.40	.35	.45	.39	.35	.34
10.0	.45	.38	.33	.45	.37	.33	.44	.37	.33	.43	.37	.32	.42	.36	.32	.31



C Range: 0 - 360DEG  
 C Interval: 15.0DEG  
 Test Speed: HIGH  
 Temperature:25.3DEG  
 Operators:Jason  
 Test Date:2020-06-16

γ Range: 0 - 90DEG  
 γ Interval: 1.0DEG  
 Test System:EVERFINE GO-2000B\_V1 SYSTEM V2.0.362  
 Humidity:58%  
 Test Distance:5.850m [K=1.0000]  
 Remarks:

WEC AND CCEC

Test:U:220.4V I:0.0645A P:13.22W PF:0.9045 Freq:49.90Hz Lamp Flux:1204.5x1 lm		
NAME: GAME-350-12W-930	TYPE:Ceiling light	SERIAL No.:
SPEC.:4000K	DIM.: φ350mm*H78mm	
MFR.: NEKO LIGHTING AG		

ρcc	80%			70%			50%			30%			10%			0
ρw	50%	30%	10%	50%	30%	10%	50%	30%	10%	50%	30%	10%	50%	30%	10%	0
ρfc	20%			20%			20%			20%			20%			0
RCR	RCR:Room Cavity Ratio						Wall Exitance Coefficients(WEC)									
0.0																
1.0	.265	.151	.048	.258	.147	.047	.245	.140	.045	.233	.134	.043	.222	.128	.041	
2.0	.251	.138	.042	.245	.135	.042	.234	.130	.040	.224	.125	.039	.214	.121	.038	
3.0	.236	.125	.038	.230	.123	.037	.220	.119	.036	.211	.116	.036	.203	.112	.035	
4.0	.220	.115	.034	.216	.113	.033	.207	.110	.033	.199	.107	.032	.191	.104	.032	
5.0	.206	.105	.030	.202	.104	.030	.194	.101	.030	.187	.099	.029	.180	.096	.029	
6.0	.193	.097	.028	.190	.096	.028	.183	.094	.027	.176	.092	.027	.170	.090	.027	
7.0	.182	.090	.025	.178	.089	.025	.172	.087	.025	.166	.085	.025	.161	.084	.025	
8.0	.171	.084	.024	.168	.083	.023	.163	.081	.023	.157	.080	.023	.153	.078	.023	
9.0	.162	.078	.022	.159	.077	.022	.154	.076	.022	.149	.075	.021	.145	.074	.021	
10.0	.153	.073	.020	.150	.073	.020	.146	.072	.020	.142	.070	.020	.138	.069	.020	

ρcc	80%			70%			50%			30%			10%			0
ρw	50%	30%	10%	50%	30%	10%	50%	30%	10%	50%	30%	10%	50%	30%	10%	0
ρfc	20%			20%			20%			20%			20%			0
RCR	RCR:Room Cavity Ratio						Ceiling Cavity Exitance Coefficients(CCEC)									
0.0	.190	.190	.190	.163	.163	.163	.111	.111	.111	.064	.064	.064	.020	.020	.020	
1.0	.177	.157	.138	.152	.134	.119	.104	.092	.082	.060	.053	.048	.019	.017	.015	
2.0	.167	.132	.103	.143	.114	.089	.098	.079	.062	.056	.046	.036	.018	.015	.012	
3.0	.158	.114	.079	.135	.098	.069	.093	.068	.048	.054	.040	.028	.017	.013	.009	
4.0	.150	.100	.063	.128	.087	.054	.088	.060	.038	.051	.035	.023	.016	.012	.007	
5.0	.142	.090	.051	.122	.078	.044	.084	.054	.031	.049	.032	.018	.016	.010	.006	
6.0	.135	.081	.042	.116	.070	.037	.080	.049	.026	.047	.029	.015	.015	.009	.005	
7.0	.129	.074	.036	.111	.064	.031	.077	.045	.022	.045	.027	.013	.014	.009	.004	
8.0	.123	.068	.031	.106	.059	.027	.073	.042	.019	.043	.024	.011	.014	.008	.004	
9.0	.117	.063	.027	.101	.055	.023	.070	.039	.017	.041	.023	.010	.013	.007	.003	
10.0	.112	.059	.024	.097	.051	.021	.067	.036	.015	.039	.021	.009	.013	.007	.003	

C Range: 0 - 360DEG  
 C Interval: 15.0DEG  
 Test Speed: HIGH  
 Temperature:25.3DEG  
 Operators:Jason  
 Test Date:2020-06-16

γ Range: 0 - 90DEG  
 γ Interval: 1.0DEG  
 Test System:EVERFINE GO-2000B\_V1 SYSTEM V2.0.362  
 Humidity:58%  
 Test Distance:5.850m [K=1.0000]  
 Remarks:

UGR(Unified Glare Rating) Table

Test:U:220.4V I:0.0645A P:13.22W PF:0.9045 Freq:49.90Hz Lamp Flux:1204.5x1 lm		
NAME: GAME-350-12W-930	TYPE:Ceiling light	SERIAL No.:
SPEC.:4000K	DIM.: φ350mm*H78mm	
MFR.: NEKO LIGHTING AG		

ceiling/cavity	0.7	0.7	0.5	0.5	0.3	0.7	0.7	0.5	0.5	0.3
walls	0.5	0.3	0.5	0.3	0.3	0.5	0.3	0.5	0.3	0.3
working plane	0.2	0.2	0.2	0.2	0.2	0.2	0.2	0.2	0.2	0.2
Room dimensions	Viewed crosswise					Viewed endwise				
x = 2H y = 2H	14.6	16.0	14.9	16.2	16.4	14.7	16.1	15.0	16.3	16.5
3H	15.3	16.6	15.6	16.8	17.0	15.4	16.7	15.7	16.9	17.1
4H	15.7	16.9	16.0	17.1	17.4	15.7	16.9	16.0	17.2	17.4
6H	16.1	17.2	16.4	17.4	17.7	16.0	17.1	16.3	17.4	17.6
8H	16.2	17.3	16.5	17.6	17.8	16.1	17.2	16.4	17.4	17.7
12H	16.3	17.3	16.7	17.6	17.9	16.1	17.2	16.5	17.4	17.7
4H 2H	14.9	16.1	15.2	16.3	16.6	15.0	16.1	15.3	16.4	16.6
3H	15.8	16.8	16.1	17.1	17.4	15.9	16.9	16.2	17.2	17.5
4H	16.3	17.3	16.7	17.6	17.9	16.3	17.3	16.7	17.6	17.9
6H	16.8	17.6	17.2	18.0	18.3	16.7	17.5	17.1	17.9	18.3
8H	17.0	17.8	17.4	18.1	18.5	16.9	17.6	17.3	18.0	18.4
12H	17.2	17.9	17.6	18.2	18.6	17.0	17.7	17.4	18.0	18.4
8H 4H	16.5	17.3	16.9	17.6	18.0	16.5	17.3	16.9	17.6	18.0
6H	17.1	17.7	17.5	18.1	18.6	17.1	17.7	17.5	18.1	18.5
8H	17.4	18.0	17.8	18.4	18.8	17.3	17.9	17.7	18.3	18.7
12H	17.6	18.1	18.1	18.6	19.0	17.4	17.9	17.9	18.4	18.8
12H 4H	16.5	17.2	16.9	17.6	18.0	16.5	17.2	16.9	17.6	18.0
6H	17.2	17.7	17.6	18.1	18.6	17.1	17.7	17.6	18.1	18.5
8H	17.5	18.0	18.0	18.4	18.9	17.4	17.9	17.9	18.3	18.8
Variations with the observer position at spacings:										
S = 1.0H	+ 0.6 / - 0.5					+ 0.6 / - 0.6				
1.5H	+ 0.4 / - 0.5					+ 0.5 / - 0.4				
2.0H	+ 1.3 / - 0.7					+ 1.5 / - 1.0				

CIE Pub.117, 1205 lm Total Lamp Luminous Flux Correct (8log(F/F0) = 0.6)

C Range: 0 - 360DEG  
 C Interval: 15.0DEG  
 Test Speed: HIGH  
 Temperature:25.3DEG  
 Operators:Jason  
 Test Date:2020-06-16

γ Range: 0 - 90DEG  
 γ Interval: 1.0DEG  
 Test System:EVERFINE GO-2000B\_V1 SYSTEM V2.0.362  
 Humidity:58%  
 Test Distance:5.850m [K=1.0000]  
 Remarks:

**UTILIZATION FACTORS TABLE**

Test:U:220.4V I:0.0645A P:13.22W PF:0.9045 Freq:49.90Hz Lamp Flux:1204.5x1 lm		
NAME: GAME-350-12W-930	TYPE:Ceiling light	SERIAL No.:
SPEC.:4000K	DIM.: φ350mm*H78mm	
MFR.: NEKO LIGHTING AG		

REFLECTANCE										
Ceiling	0.8	0.8	0.8	0.7	0.7	0.7	0.5	0.5	0.5	0
Walls	0.7	0.5	0.3	0.7	0.5	0.3	0.7	0.5	0.3	0
Working plane	0.2	0.2	0.2	0.2	0.2	0.2	0.2	0.2	0.2	0
ROOM INDEX	UTILIZATION FACTORS(PERCENT) $k(RI) \times RCR = 5$									
k = 0.60	65	55	49	65	55	49	64	54	49	43
0.80	75	65	59	74	65	59	73	64	58	52
1.00	83	74	67	82	73	67	80	74	67	61
1.25	90	81	75	88	80	74	86	79	74	67
1.50	94	86	80	92	85	79	90	83	78	72
2.00	100	93	87	98	91	86	95	89	85	78
2.50	103	96	91	101	95	90	97	92	88	81
3.00	105	100	95	103	98	94	100	95	92	84
4.00	109	104	100	106	102	99	102	99	96	88
5.00	111	107	103	108	105	102	104	101	98	90
ROOM INDEX	UF(total)									Direct
According to DIN EN 13032-2 2004			Suspended				SHRNOM = 1.25			

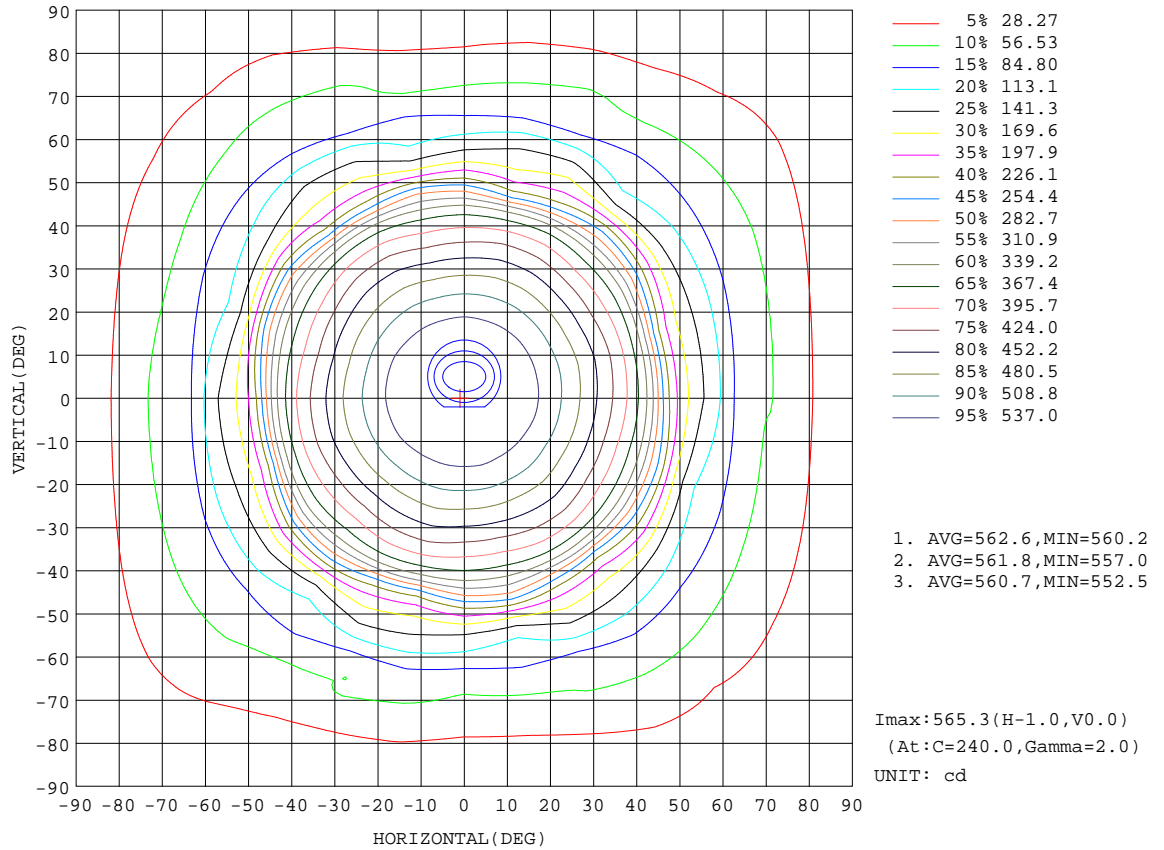
C Range: 0 - 360DEG  
 C Interval: 15.0DEG  
 Test Speed: HIGH  
 Temperature:25.3DEG  
 Operators:Jason  
 Test Date:2020-06-16

$\gamma$  Range: 0 - 90DEG  
 $\gamma$  Interval: 1.0DEG  
 Test System:EVERFINE GO-2000B\_V1 SYSTEM V2.0.362  
 Humidity:58%  
 Test Distance:5.850m [K=1.0000]  
 Remarks:



**ISOCANDELA DIAGRAM**

Test:U:220.4V I:0.0645A P:13.22W PF:0.9045 Freq:49.90Hz Lamp Flux:1204.5x1 lm		
NAME: GAME-350-12W-930	TYPE:Ceiling light	SERIAL No.:
SPEC.:4000K	DIM.: φ350mm*H78mm	
MFR.: NEKO LIGHTING AG		



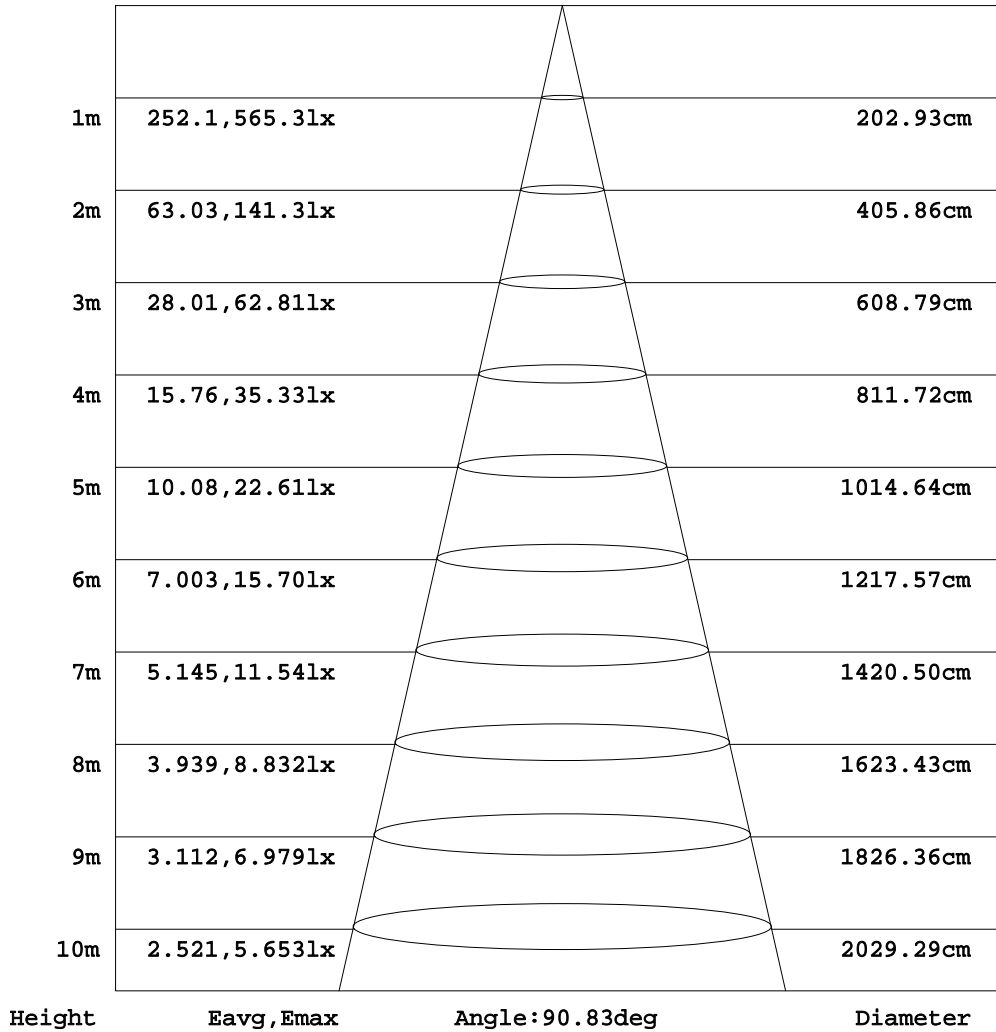
C Range: 0 - 360DEG  
C Interval: 15.0DEG  
Test Speed: HIGH  
Temperature:25.3DEG  
Operators:Jason  
Test Date:2020-06-16

γ Range: 0 - 90DEG  
γ Interval: 1.0DEG  
Test System:EVERFINE GO-2000B\_V1 SYSTEM V2.0.362  
Humidity:58%  
Test Distance:5.850m [K=1.0000]  
Remarks:

**AAI Figure**

Test:U:220.4V I:0.0645A P:13.22W PF:0.9045 Freq:49.90Hz Lamp Flux:1204.5x1 lm		
NAME: GAME-350-12W-930	TYPE:Ceiling light	SERIAL No.:
SPEC.:4000K	DIM.: φ350mm*H78mm	
MFR.: NEKO LIGHTING AG		

Flux out:849.3 lm



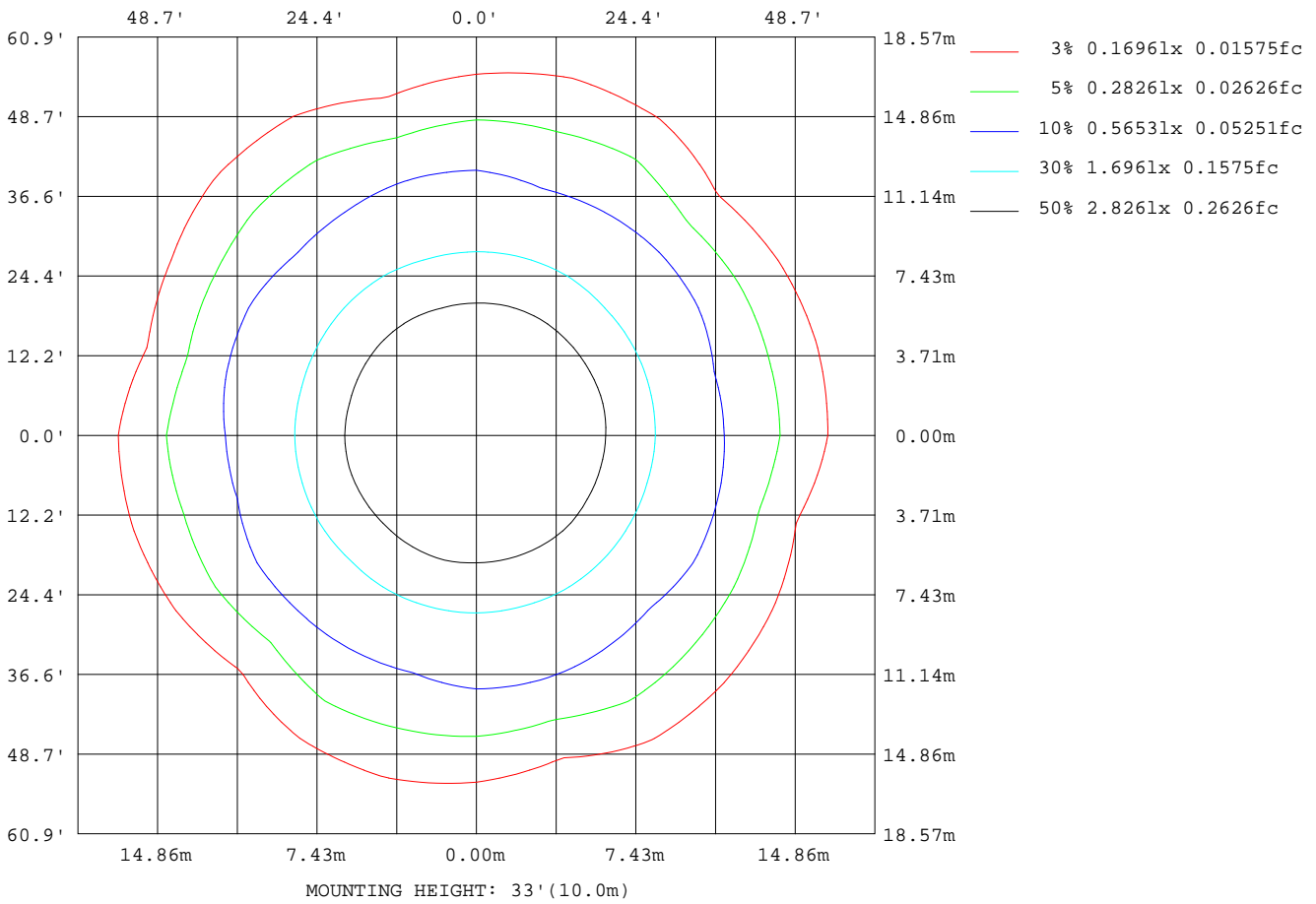
Note:The Curves indicate the illuminated area and the average illumination when the luminaire is at different distance.

C Range: 0 - 360DEG  
C Interval: 15.0DEG  
Test Speed: HIGH  
Temperature:25.3DEG  
Operators:Jason  
Test Date:2020-06-16

γ Range: 0 - 90DEG  
γ Interval: 1.0DEG  
Test System:EVERFINE GO-2000B\_V1 SYSTEM V2.0.362  
Humidity:58%  
Test Distance:5.850m [K=1.0000]  
Remarks:

**ISOLUX DIAGRAM**

Test:U:220.4V I:0.0645A P:13.22W PF:0.9045 Freq:49.90Hz Lamp Flux:1204.5x1 lm		
NAME: GAME-350-12W-930	TYPE:Ceiling light	SERIAL No.:
SPEC.:4000K	DIM.: φ350mm*H78mm	
MFR.: NEKO LIGHTING AG		



C Range: 0 - 360DEG  
 C Interval: 15.0DEG  
 Test Speed: HIGH  
 Temperature:25.3DEG  
 Operators:Jason  
 Test Date:2020-06-16

γ Range: 0 - 90DEG  
 γ Interval: 1.0DEG  
 Test System:EVERFINE GO-2000B\_V1 SYSTEM V2.0.362  
 Humidity:58%  
 Test Distance:5.850m [K=1.0000]  
 Remarks:

LED Avg.L Report

Test:U:220.4V I:0.0645A P:13.22W PF:0.9045 Freq:49.90Hz Lamp Flux:1204.5x1 lm		
NAME: GAME-350-12W-930	TYPE:Ceiling light	SERIAL No.:
SPEC.:4000K	DIM.: φ350mm*H78mm	
MFR.: NEKO LIGHTING AG		

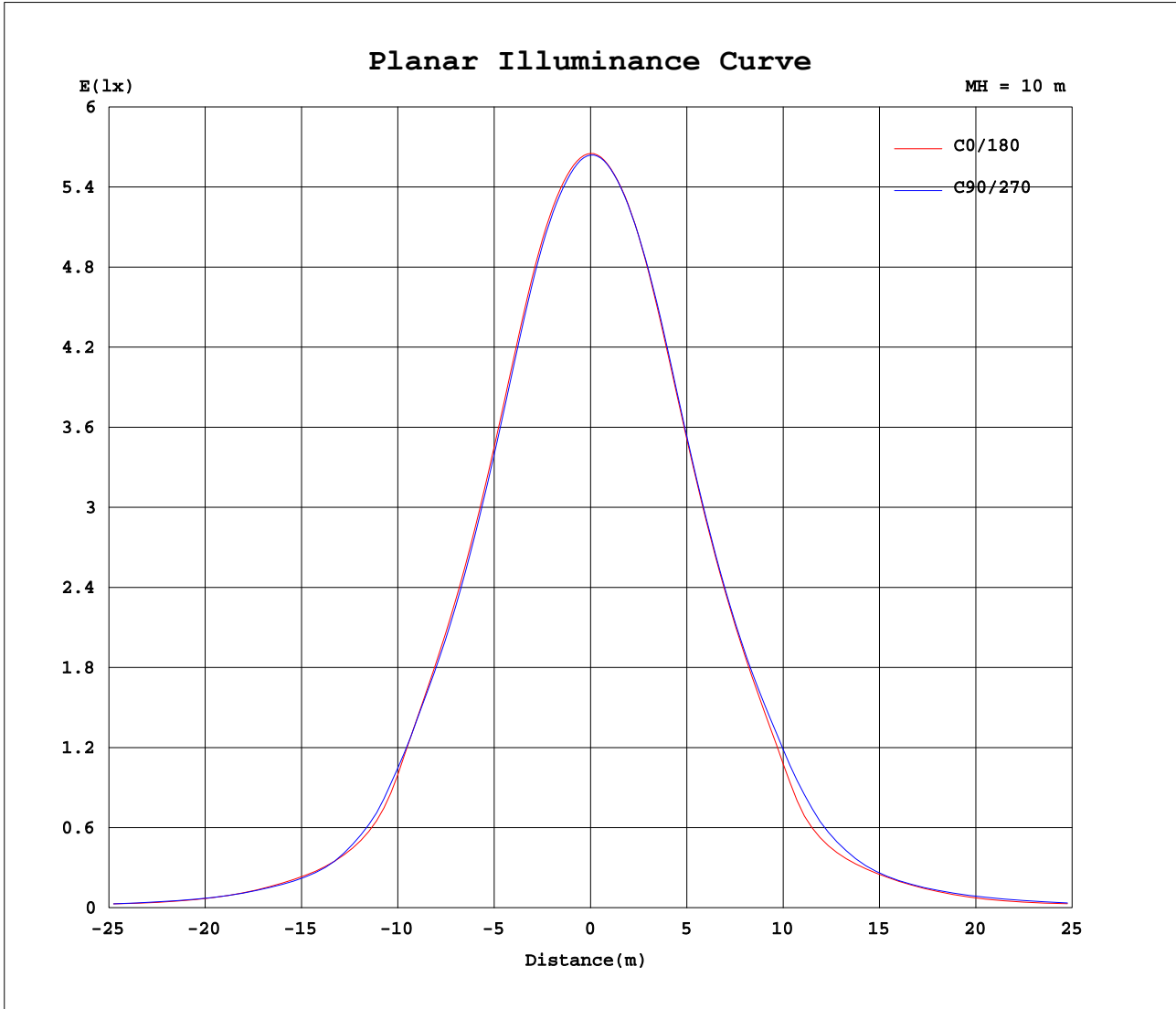
AvgL	cd/m2
L_0~180 (65) av	1687
L_0~180 (75) av	1836
L_0~180 (85) av	1786
L_90~270 (65) av	1970
L_90~270 (75) av	1762
L_90~270 (85) av	1680
L_45 (65) av	1988
L_45 (75) av	1799
L_45 (85) av	1727

Standard: GB/T 29293-2012

C Range: 0 - 360DEG  
C Interval: 15.0DEG  
Test Speed: HIGH  
Temperature:25.3DEG  
Operators:Jason  
Test Date:2020-06-16

γ Range: 0 - 90DEG  
γ Interval: 1.0DEG  
Test System:EVERFINE GO-2000B\_V1 SYSTEM V2.0.362  
Humidity:58%  
Test Distance:5.850m [K=1.0000]  
Remarks:

Planar Illuminance Curve



C Range: 0 - 360DEG  
 C Interval: 15.0DEG  
 Test Speed: HIGH  
 Temperature: 25.3DEG  
 Operators: Jason  
 Test Date: 2020-06-16

$\gamma$  Range: 0 - 90DEG  
 $\gamma$  Interval: 1.0DEG  
 Test System: EVERFINE GO-2000B\_V1 SYSTEM V2.0.362  
 Humidity: 58%  
 Test Distance: 5.850m [K=1.0000]  
 Remarks:

LUMINOUS DISTRIBUTION INTENSITY DATA

Table with test parameters: NAME: GAME-350-12W-930, TYPE: Ceiling light, SERIAL No.: , SPEC.: 4000K, DIM.: ϕ350mm\*H78mm, MFR.: NEKO LIGHTING AG

Table--1: Luminous distribution data table with columns for C (DEG) and γ (DEG) and values for various angles, including values like 564, 562, 556, etc.

C Range: 0 - 360DEG
C Interval: 15.0DEG
Test Speed: HIGH
Temperature: 25.3DEG
Operators: Jason
Test Date: 2020-06-16
γ Range: 0 - 90DEG
γ Interval: 1.0DEG
Test System: EVERFINE GO-2000B\_V1 SYSTEM V2.0.362
Humidity: 58%
Test Distance: 5.850m [K=1.0000]
Remarks:

LUMINOUS DISTRIBUTION INTENSITY DATA

Test:U:220.4V I:0.0645A P:13.22W PF:0.9045 Freq:49.90Hz Lamp Flux:1204.5x1 lm		
NAME: GAME-350-12W-930	TYPE:Ceiling light	SERIAL No.:
SPEC.:4000K	DIM.: φ350mm*H78mm	
MFR.: NEKO LIGHTING AG		

Table--2

UNIT: cd

C (DEG) \ γ (DEG)	285	300	315	330	345															
0	564	564	564	564	564															
5	564	564	563	563	562															
10	559	559	558	558	557															
15	549	549	549	547	546															
20	532	531	530	527	525															
25	504	503	500	497	496															
30	473	471	465	461	463															
35	438	435	426	422	424															
40	394	392	381	378	374															
45	322	321	315	309	279															
50	212	218	224	214	184															
55	162	170	136	143	143															
60	134	127	100	109	111															
65	90.0	79.4	84.3	80.4	76.3															
70	67.7	58.7	60.0	60.4	60.3															
75	50.7	52.7	46.1	43.7	45.3															
80	35.4	32.2	29.5	28.8	32.6															
85	20.2	18.4	15.9	14.9	15.6															
90	2.28	1.77	1.26	0.24	0.22															

C Range: 0 - 360DEG  
 C Interval: 15.0DEG  
 Test Speed: HIGH  
 Temperature:25.3DEG  
 Operators:Jason  
 Test Date:2020-06-16

γ Range: 0 - 90DEG  
 γ Interval: 1.0DEG  
 Test System:EVERFINE GO-2000B\_V1 SYSTEM V2.0.362  
 Humidity:58%  
 Test Distance:5.850m [K=1.0000]  
 Remarks: