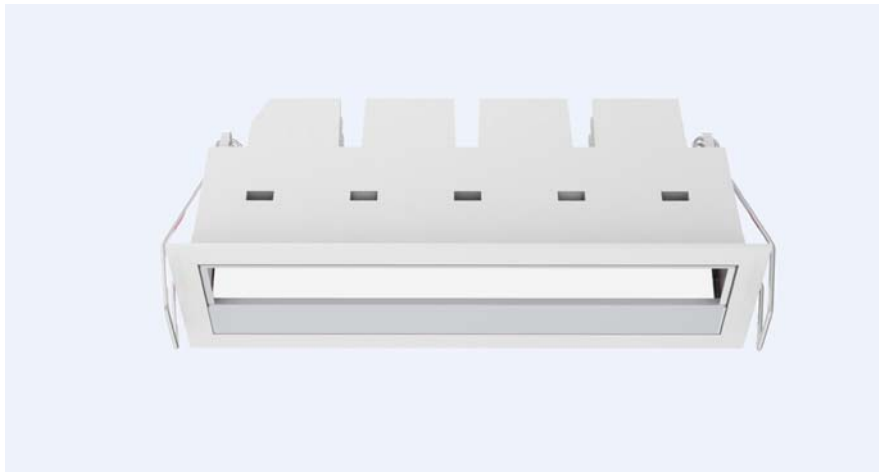


LED Downlight FUSION Series FW5-11W-830



Light Output Ratio:	100.0%	
Luminaire Power:	12.16 W	
SHR Nominal:	1.25	Calculated using the TM5
SHR Maximum:	1.30	fine grid method.

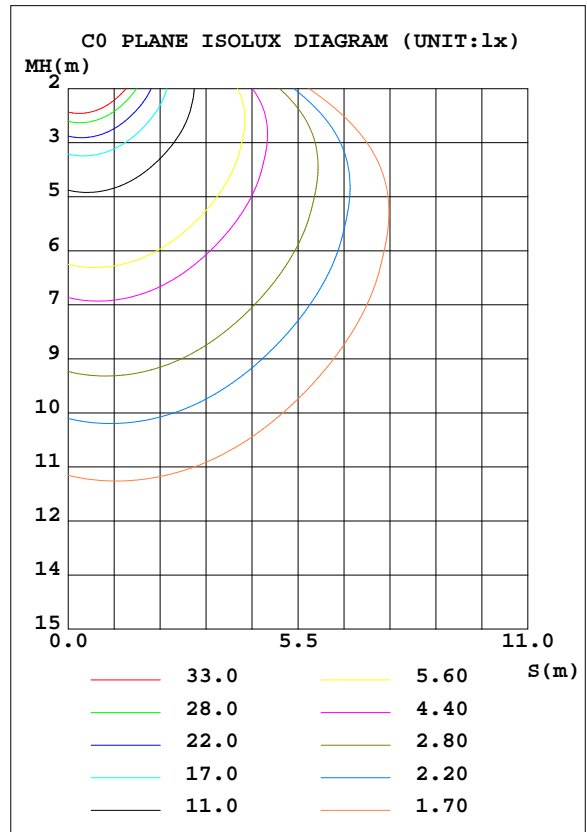
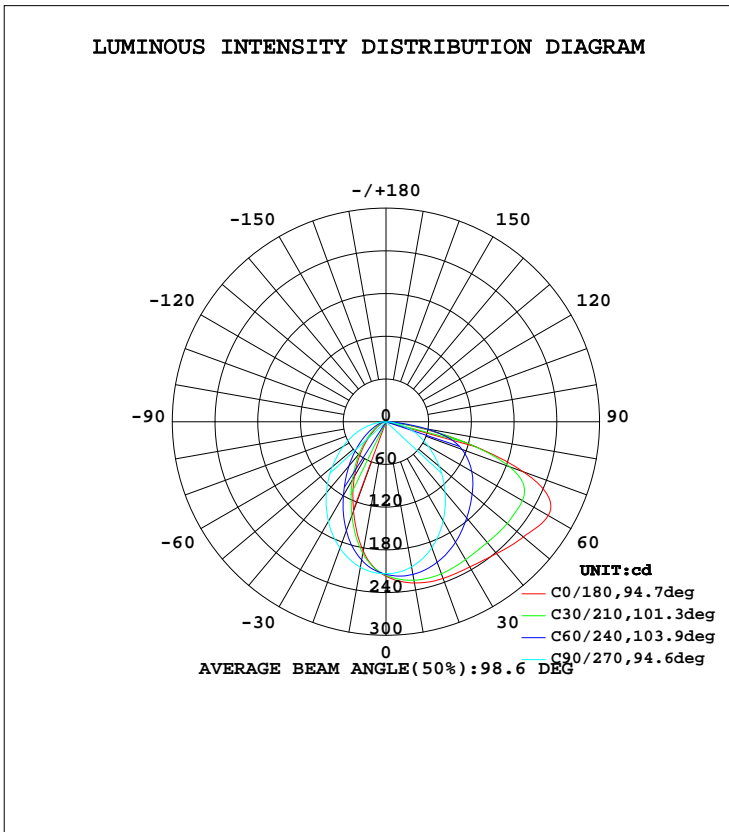
C Range: 0 - 360DEG
C Interval: 15.0DEG
Test Speed: HIGH
Temperature: 25.3DEG
Operators: Meng Yongjian
Test Date: 2017-01-09

γ Range: 0 - 90DEG
 γ Interval: 1.0DEG
Test System: EVERFINE GO-2000B_V1 SYSTEM V2.0.288
Humidity: 52%
Test Distance: 5.850m [K=1.0000]
Remarks:

LUMINAIRE PHOTOMETRIC TEST REPORT

Test:U:220.6V I:0.0620A P:12.16W PF:0.8892 Lamp Flux:596.266x1 lm		
NAME: FW5-11W-830	TYPE:Downlight	SERIAL No.:
SPEC.:3000K	DIM.: L153mm*W45mm*H60mm	
MFR.: NEKO LIGHTING AG		

DATA OF LAMP		PHOTOMETRIC DATA				Eff: 49.04 lm/W
MODEL	CREE-3000K	I _{max} (cd)	263.3	S/MH(C0/180)	0.74	
NOMINAL POWER(W)	13.0	LOR(%)	100.0	S/MH(C90/270)	1.14	
RATED VOLTAGE(V)	220	TOTAL FLUX(lm)	596.27	η UP, DN(C0-180)	0.0, 53.3	
NOMINAL FLUX(lm)	596.266	CIE CLASS	DIRECT	η UP, DN(C180-360)	0.0, 46.7	
LAMPS INSIDE	1	η up(%)	0.0	CIBSE SHR NOM	1.25	
TEST VOLTAGE(V)	220	η down(%)	100.0	CIBSE SHR MAX	1.30	



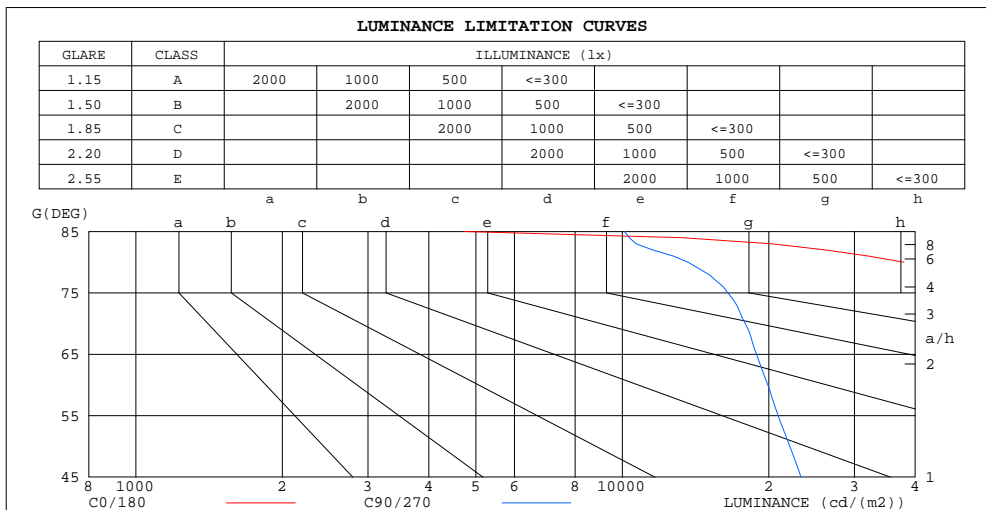
C Range: 0 - 360DEG
 C Interval: 15.0DEG
 Test Speed: HIGH
 Temperature:25.3DEG
 Operators:Meng Yongjian
 Test Date:2017-01-09

γ Range: 0 - 90DEG
 γ Interval: 1.0DEG
 Test System:EVERFINE GO-2000B_V1 SYSTEM V2.0.288
 Humidity:52%
 Test Distance:5.850m [K=1.0000]
 Remarks:

**ZONAL FLUX DIAGRAM
AND LUMINANCE LIMITATION CURVES**

ZONAL FLUX DIAGRAM:

γ	C0	C45	C90	C135	C180	C225	C270	C315	γ	Φ zone	Φ total	#lum,lamp
10	230.0	222.3	207.0	190.0	184.5	191.8	207.5	220.1	0- 10	20.06	20.06	3.36,3.36
20	234.2	219.8	188.3	148.1	133.4	149.1	189.0	217.8	10- 20	55.27	75.33	12.6,12.6
30	235.5	211.0	160.6	103.0	88.81	103.9	161.6	209.0	20- 30	79.15	154.5	25.9,25.9
40	241.7	200.4	129.2	65.96	53.47	66.35	130.4	198.3	30- 40	91.85	246.3	41.3,41.3
50	251.8	191.6	97.81	38.66	27.74	39.01	98.73	189.1	40- 50	96.85	343.2	57.6,57.6
60	263.3	180.1	68.54	20.65	12.82	20.95	69.49	177.5	50- 60	97.05	440.2	73.8,73.8
70	205.1	153.3	42.15	10.08	5.784	10.34	43.30	151.1	60- 70	90.39	530.6	89,89
80	45.32	55.81	16.31	3.706	2.144	3.859	17.90	57.89	70- 80	55.85	586.5	98.4,98.4
90	0.1640	0.2514	0.2274	0.3520	0.3170	0.3083	0.3455	0.2143	80- 90	9.794	596.3	100,100
100									90-100			
110									100-110			
120									110-120			
130									120-130			
140									130-140			
150									140-150			
160									150-160			
170									160-170			
180									170-180			
DEG	LUMINOUS INTENSITY:cd									UNIT:lm		



LUMINANCE cd/(m2)		
G(DEG)	C0/180	C90/270
85	4724	10099
80	37907	13645
75	67540	16478
70	87088	17898
65	86807	18866
60	76482	19909
55	65505	20915
50	56888	22100
45	50687	23301

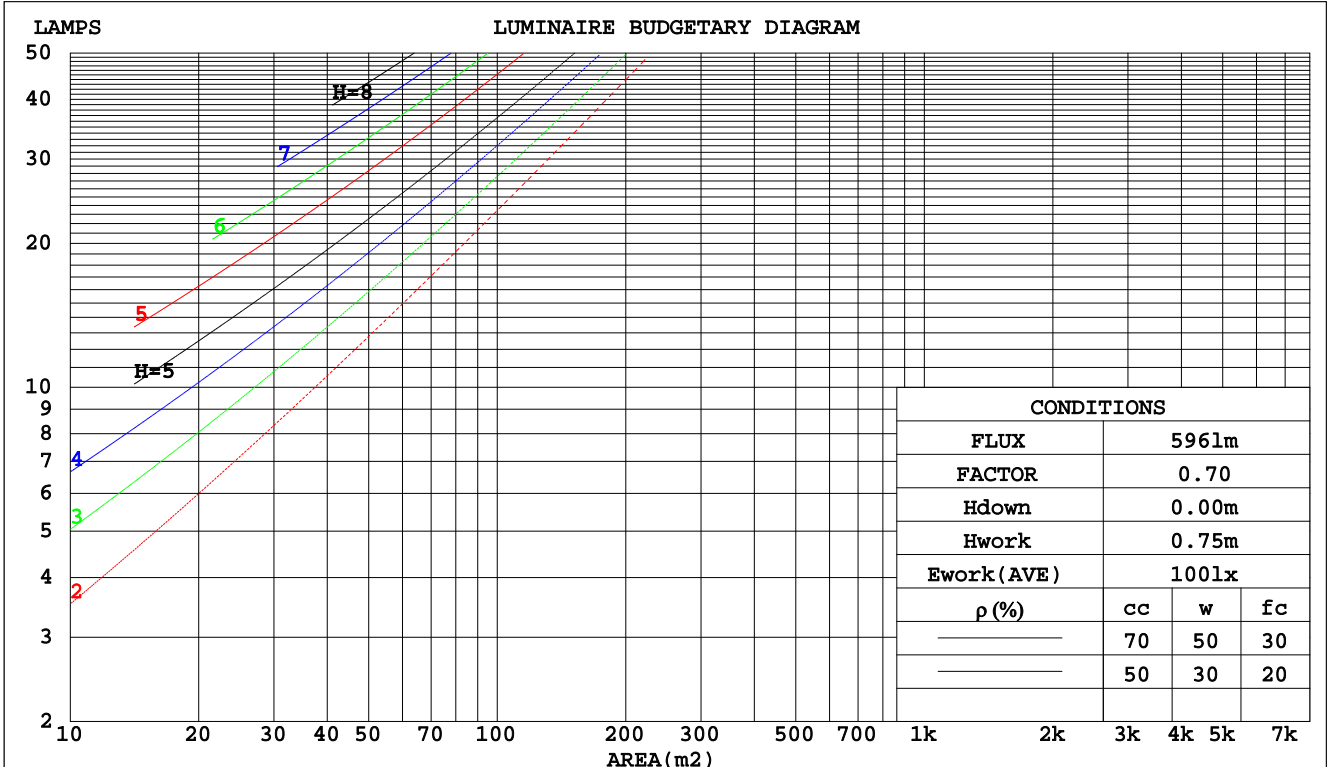
C Range: 0 - 360DEG
 C Interval: 15.0DEG
 Test Speed: HIGH
 Temperature:25.3DEG
 Operators:Meng Yongjian
 Test Date:2017-01-09

γ Range: 0 - 90DEG
 γ Interval: 1.0DEG
 Test System:EVERFINE GO-2000B_V1 SYSTEM V2.0.288
 Humidity:52%
 Test Distance:5.850m [K=1.0000]
 Remarks:

CU AND LUMINAIRE BUDGETARY ESTIMATE DIAGRAM

Test:U:220.6V I:0.0620A P:12.16W PF:0.8892 Lamp Flux:596.266x1 lm		
NAME: FW5-11W-830	TYPE:Downlight	SERIAL No.:
SPEC.:3000K	DIM.: L153mm*W45mm*H60mm	
MFR.: NEKO LIGHTING AG		

pcc	80%			70%			50%			30%			10%			0
	50%	30%	10%	50%	30%	10%	50%	30%	10%	50%	30%	10%	50%	30%	10%	0
pw																
pfc																
RCR	RCR:Room Cavity Ratio															
	Coefficients of Utilization(CU)															
0.0	1.19	1.19	1.19	1.16	1.16	1.16	1.11	1.11	1.11	1.06	1.06	1.06	1.02	1.02	1.02	1.00
1.0	1.03	.99	.94	1.01	.97	.93	.96	.93	.90	.93	.90	.87	.89	.87	.85	.82
2.0	.89	.82	.76	.87	.80	.75	.83	.78	.73	.80	.75	.71	.77	.73	.70	.67
3.0	.77	.69	.62	.76	.68	.61	.73	.66	.60	.70	.64	.59	.67	.62	.58	.56
4.0	.68	.59	.52	.67	.58	.52	.64	.57	.51	.62	.56	.50	.60	.54	.50	.47
5.0	.61	.51	.45	.60	.51	.44	.58	.50	.44	.55	.49	.43	.54	.48	.43	.41
6.0	.55	.45	.39	.54	.45	.39	.52	.44	.38	.50	.43	.38	.49	.42	.38	.35
7.0	.50	.41	.34	.49	.40	.34	.47	.39	.34	.46	.39	.34	.44	.38	.33	.31
8.0	.45	.36	.30	.44	.36	.30	.43	.36	.30	.42	.35	.30	.41	.34	.30	.28
9.0	.41	.33	.27	.41	.33	.27	.40	.32	.27	.39	.32	.27	.38	.31	.27	.25
10.0	.38	.30	.25	.38	.30	.25	.37	.30	.25	.36	.29	.25	.35	.29	.24	.23



C Range: 0 - 360DEG
 C Interval: 15.0DEG
 Test Speed: HIGH
 Temperature: 25.3DEG
 Operators: Meng Yongjian
 Test Date: 2017-01-09

γ Range: 0 - 90DEG
 γ Interval: 1.0DEG
 Test System: EVERFINE GO-2000B_V1 SYSTEM V2.0.288
 Humidity: 52%
 Test Distance: 5.850m [K=1.0000]
 Remarks:

WEC AND CCEC

Test:U:220.6V I:0.0620A P:12.16W PF:0.8892 Lamp Flux:596.266x1 lm		
NAME: FW5-11W-830	TYPE:Downlight	SERIAL No.:
SPEC.:3000K	DIM.: L153mm*W45mm*H60mm	
MFR.: NEKO LIGHTING AG		

ρcc	80%			70%			50%			30%			10%			0
ρw	50%	30%	10%	50%	30%	10%	50%	30%	10%	50%	30%	10%	50%	30%	10%	0
ρfc	20%			20%			20%			20%			20%			0
RCR	RCR:Room Cavity Ratio						Wall Exitance Coefficients(WEC)									
0.0																
1.0	.326	.185	.059	.319	.182	.058	.305	.175	.056	.293	.169	.054	.282	.163	.053	
2.0	.306	.168	.052	.300	.165	.051	.288	.160	.050	.277	.156	.049	.267	.151	.048	
3.0	.282	.150	.045	.276	.148	.045	.266	.144	.044	.256	.140	.043	.247	.137	.042	
4.0	.259	.134	.040	.254	.133	.039	.244	.130	.039	.236	.127	.038	.228	.124	.038	
5.0	.238	.121	.035	.233	.120	.035	.225	.117	.035	.217	.115	.034	.210	.112	.034	
6.0	.219	.110	.031	.216	.109	.031	.208	.107	.031	.201	.105	.031	.195	.103	.030	
7.0	.203	.101	.029	.200	.100	.028	.193	.098	.028	.187	.096	.028	.181	.094	.028	
8.0	.189	.093	.026	.186	.092	.026	.180	.090	.026	.175	.089	.026	.170	.087	.025	
9.0	.177	.086	.024	.174	.085	.024	.169	.084	.024	.164	.082	.024	.159	.081	.023	
10.0	.166	.080	.022	.163	.079	.022	.159	.078	.022	.154	.077	.022	.150	.075	.022	

ρcc	80%			70%			50%			30%			10%			0
ρw	50%	30%	10%	50%	30%	10%	50%	30%	10%	50%	30%	10%	50%	30%	10%	0
ρfc	20%			20%			20%			20%			20%			0
RCR	RCR:Room Cavity Ratio						Ceiling Cavity Exitance Coefficients(CCEC)									
0.0	.190	.190	.190	.163	.163	.163	.111	.111	.111	.064	.064	.064	.020	.020	.020	
1.0	.181	.156	.133	.155	.134	.115	.106	.092	.079	.061	.053	.046	.020	.017	.015	
2.0	.174	.132	.096	.149	.113	.083	.102	.079	.058	.059	.046	.034	.019	.015	.011	
3.0	.167	.114	.073	.143	.099	.063	.098	.069	.044	.057	.040	.026	.018	.013	.009	
4.0	.159	.101	.057	.137	.087	.049	.094	.061	.035	.054	.036	.021	.017	.012	.007	
5.0	.152	.091	.046	.130	.079	.040	.090	.055	.028	.052	.032	.017	.017	.011	.006	
6.0	.144	.083	.038	.124	.071	.033	.086	.050	.024	.050	.029	.014	.016	.010	.005	
7.0	.137	.076	.033	.118	.066	.028	.082	.046	.020	.047	.027	.012	.015	.009	.004	
8.0	.130	.070	.028	.112	.061	.025	.078	.043	.017	.045	.025	.010	.015	.008	.003	
9.0	.124	.065	.025	.107	.056	.022	.074	.040	.015	.043	.023	.009	.014	.008	.003	
10.0	.118	.061	.022	.102	.053	.019	.071	.037	.014	.041	.022	.008	.013	.007	.003	

C Range: 0 - 360DEG
 C Interval: 15.0DEG
 Test Speed: HIGH
 Temperature:25.3DEG
 Operators:Meng Yongjian
 Test Date:2017-01-09

γ Range: 0 - 90DEG
 γ Interval: 1.0DEG
 Test System:EVERFINE GO-2000B_V1 SYSTEM V2.0.288
 Humidity:52%
 Test Distance:5.850m [K=1.0000]
 Remarks:

UGR(Unified Glare Rating) Table

Test:U:220.6V I:0.0620A P:12.16W PF:0.8892 Lamp Flux:596.266x1 lm		
NAME: FW5-11W-830	TYPE:Downlight	SERIAL No.:
SPEC.:3000K	DIM.: L153mm*W45mm*H60mm	
MFR.: NEKO LIGHTING AG		

ceiling/cavity	0.7	0.7	0.5	0.5	0.3	0.7	0.7	0.5	0.5	0.3
walls	0.5	0.3	0.5	0.3	0.3	0.5	0.3	0.5	0.3	0.3
working plane	0.2	0.2	0.2	0.2	0.2	0.2	0.2	0.2	0.2	0.2
Room dimensions	Viewed crosswise					Viewed endwise				
x = 2H y = 2H	30.4	31.9	30.6	32.1	32.3	25.5	27.1	25.8	27.3	27.5
3H	33.2	34.6	33.5	34.9	35.1	27.0	28.4	27.3	28.7	28.9
4H	33.9	35.3	34.3	35.6	35.8	27.5	28.9	27.9	29.2	29.4
6H	34.2	35.5	34.5	35.8	36.0	27.9	29.2	28.3	29.5	29.8
8H	34.2	35.4	34.5	35.7	36.0	28.0	29.3	28.4	29.6	29.9
12H	34.1	35.3	34.5	35.6	36.0	28.0	29.2	28.4	29.5	29.9
4H 2H	30.9	32.3	31.2	32.5	32.8	27.7	29.1	28.0	29.3	29.6
3H	33.9	35.1	34.3	35.4	35.7	29.4	30.7	29.8	31.0	31.3
4H	34.8	35.9	35.2	36.2	36.6	30.2	31.3	30.6	31.6	32.0
6H	35.1	36.1	35.5	36.5	36.8	30.7	31.7	31.1	32.1	32.4
8H	35.1	36.1	35.6	36.4	36.8	30.9	31.8	31.3	32.2	32.5
12H	35.1	36.0	35.5	36.4	36.8	30.9	31.8	31.3	32.2	32.6
8H 4H	35.0	35.9	35.4	36.3	36.7	31.3	32.2	31.7	32.6	33.0
6H	35.4	36.2	35.9	36.6	37.0	32.0	32.8	32.5	33.2	33.6
8H	35.5	36.2	35.9	36.6	37.0	32.3	33.0	32.7	33.4	33.8
12H	35.4	36.0	35.9	36.5	37.0	32.4	33.0	32.9	33.5	33.9
12H 4H	35.0	35.8	35.4	36.2	36.6	31.3	32.2	31.8	32.6	33.0
6H	35.4	36.1	35.9	36.5	37.0	32.1	32.8	32.6	33.2	33.7
8H	35.5	36.1	36.0	36.5	37.0	32.4	33.0	32.9	33.5	33.9
Variations with the observer position at spacings:										
S = 1.0H	+ 0.1 / - 0.1					+ 0.1 / - 0.2				
1.5H	+ 0.1 / - 0.2					+ 0.2 / - 0.4				
2.0H	+ 0.3 / - 0.4					+ 0.3 / - 0.6				

CIE Pub.117 Corrected 596.3 lm Total Lamp Luminous Flux. (8log(F/F0) = -1.8)

C Range: 0 - 360DEG
 C Interval: 15.0DEG
 Test Speed: HIGH
 Temperature:25.3DEG
 Operators:Meng Yongjian
 Test Date:2017-01-09

γ Range: 0 - 90DEG
 γ Interval: 1.0DEG
 Test System:EVERFINE GO-2000B_V1 SYSTEM V2.0.288
 Humidity:52%
 Test Distance:5.850m [K=1.0000]
 Remarks:

UTILIZATION FACTORS TABLE

Test:U:220.6V I:0.0620A P:12.16W PF:0.8892 Lamp Flux:596.266x1 lm		
NAME: FW5-11W-830	TYPE:Downlight	SERIAL No.:
SPEC.:3000K	DIM.: L153mm*W45mm*H60mm	
MFR.: NEKO LIGHTING AG		

REFLECTANCE										
Ceiling	0.8	0.8	0.8	0.7	0.7	0.7	0.5	0.5	0.5	0
Walls	0.7	0.5	0.3	0.7	0.5	0.3	0.7	0.5	0.3	0
Working plane	0.2	0.2	0.2	0.2	0.2	0.2	0.2	0.2	0.2	0
ROOM INDEX	UTILIZATION FACTORS(PERCENT) $k(RI) \times RCR = 5$									
k = 0.60	56	44	37	55	44	37	54	43	37	30
0.80	66	54	46	65	53	46	63	52	46	38
1.00	74	62	55	73	62	54	70	63	54	46
1.25	81	70	62	79	69	62	77	68	61	54
1.50	86	76	68	84	75	68	81	73	67	59
2.00	93	84	77	91	83	77	88	81	75	67
2.50	98	89	83	95	88	82	92	85	80	72
3.00	101	94	88	99	92	87	95	89	85	76
4.00	105	100	95	103	98	93	99	94	91	82
5.00	108	103	99	106	101	97	101	98	94	85
ROOM INDEX	UF(total)									Direct
According to DIN EN 13032-2 2004			Suspended				SHRNOM = 1.25			

C Range: 0 - 360DEG
 C Interval: 15.0DEG
 Test Speed: HIGH
 Temperature:25.3DEG
 Operators:Meng Yongjian
 Test Date:2017-01-09

γ Range: 0 - 90DEG
 γ Interval: 1.0DEG
 Test System:EVERFINE GO-2000B_V1 SYSTEM V2.0.288
 Humidity:52%
 Test Distance:5.850m [K=1.0000]
 Remarks:

ISOCANDELA DIAGRAM

Test:U:220.6V I:0.0620A P:12.16W PF:0.8892 Lamp Flux:596.266x1 lm		
NAME: FW5-11W-830	TYPE:Downlight	SERIAL No.:
SPEC.:3000K	DIM.: L153mm*W45mm*H60mm	
MFR.: NEKO LIGHTING AG		

Conical surface Flux(90deg):

294.48 lm

%lum = 49.4%

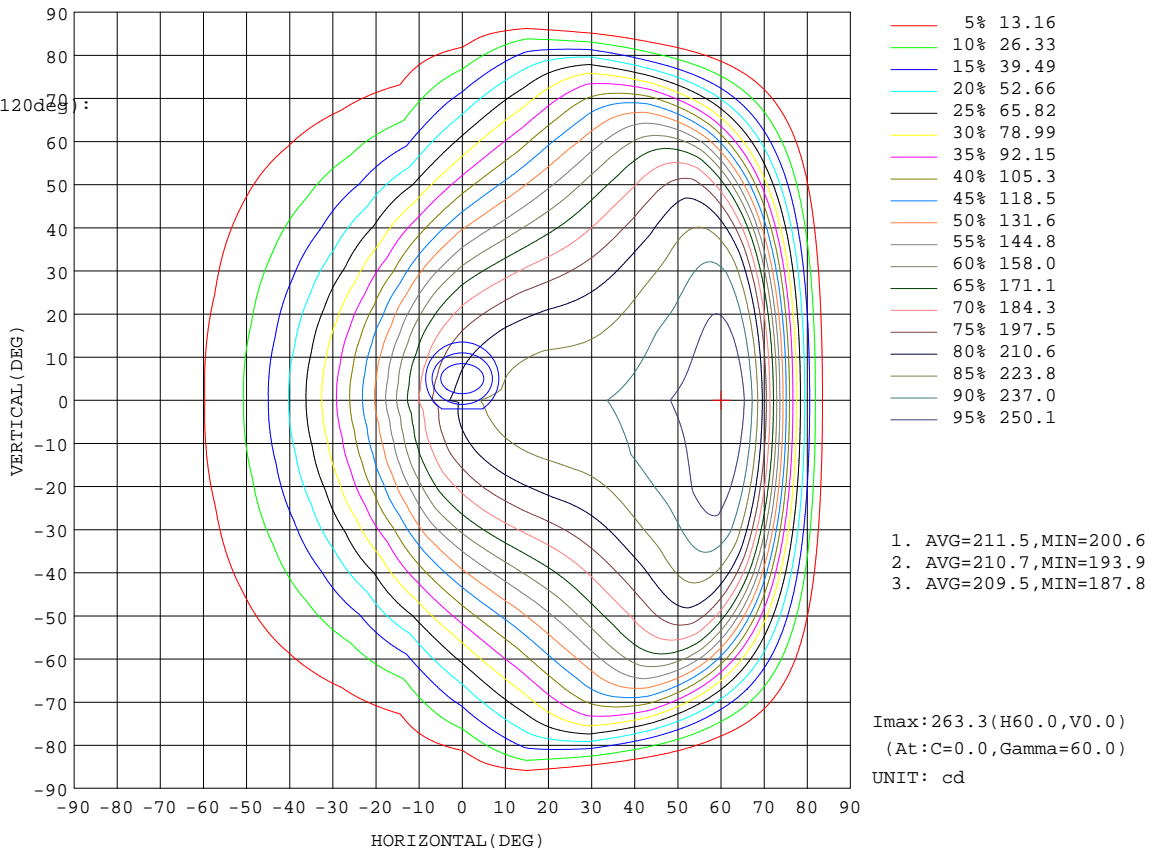
%lamp = 49.4%

Conical surface Flux(120deg):

440.23 lm

%lum = 73.8%

%lamp = 73.8%



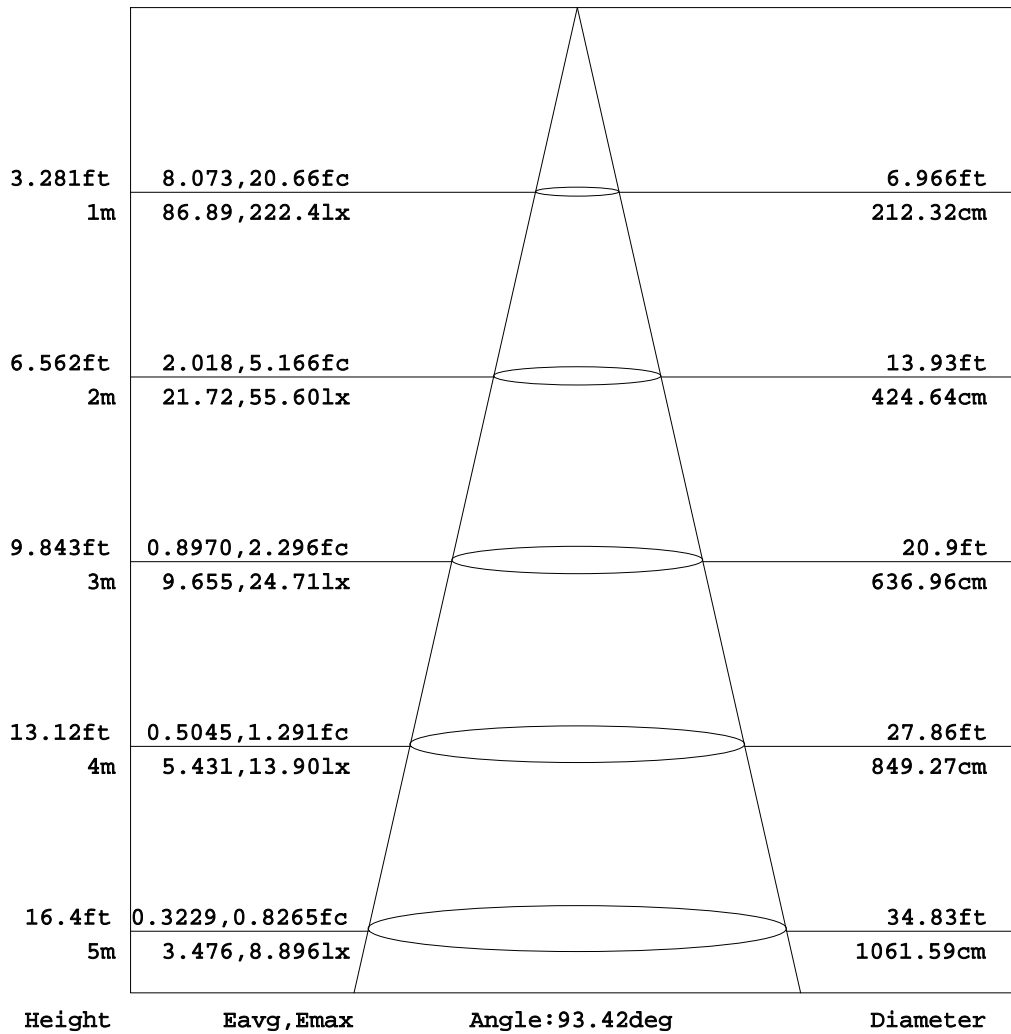
C Range: 0 - 360DEG
C Interval: 15.0DEG
Test Speed: HIGH
Temperature: 25.3DEG
Operators: Meng Yongjian
Test Date: 2017-01-09

γ Range: 0 - 90DEG
γ Interval: 1.0DEG
Test System: EVERFINE GO-2000B_V1 SYSTEM V2.0.288
Humidity: 52%
Test Distance: 5.850m [K=1.0000]
Remarks:

AAI Figure

Test:U:220.6V I:0.0620A P:12.16W PF:0.8892 Lamp Flux:596.266x1 lm		
NAME: FW5-11W-830	TYPE:Downlight	SERIAL No.:
SPEC.:3000K	DIM.: L153mm*W45mm*H60mm	
MFR.: NEKO LIGHTING AG		

Flux out:313.9 lm



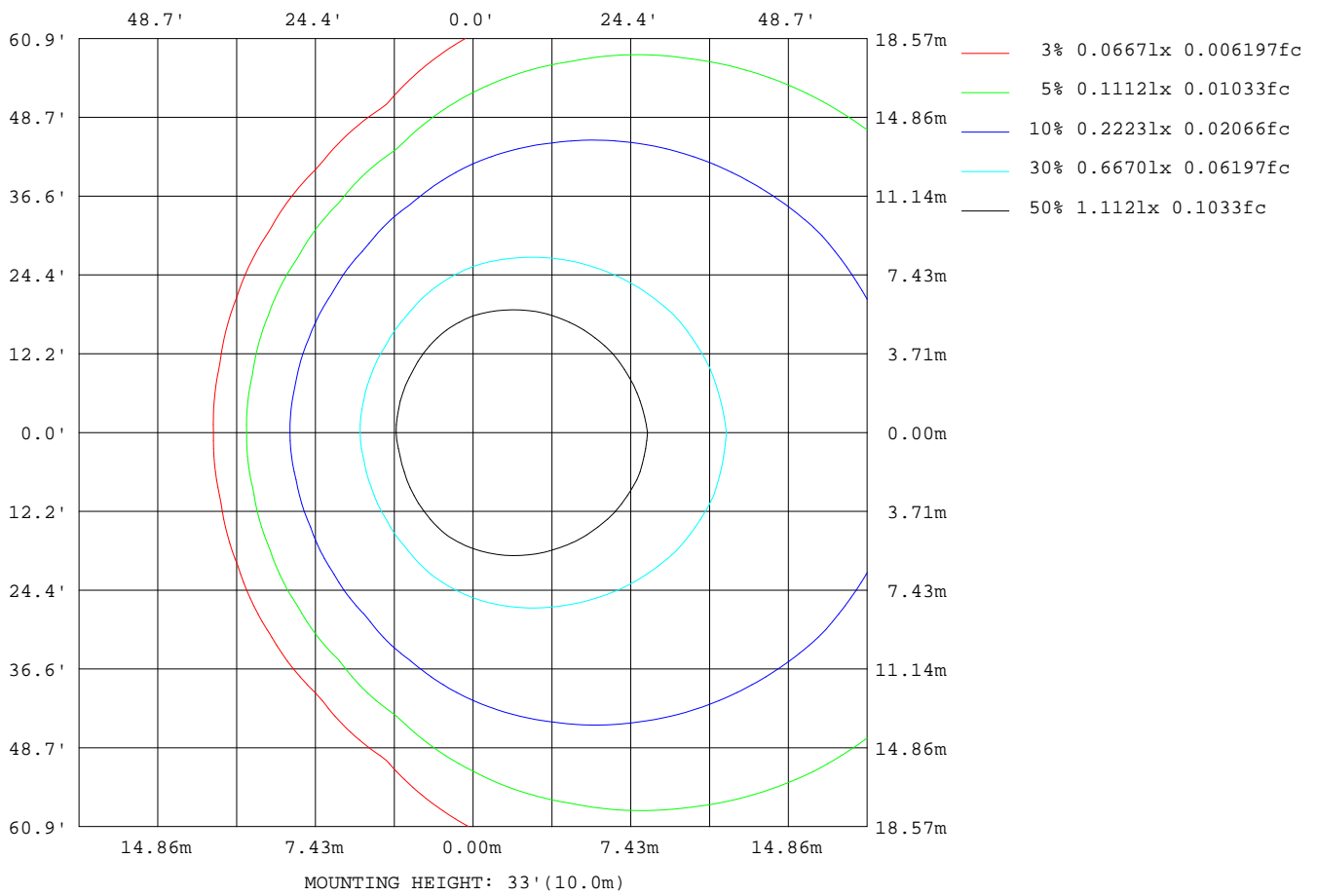
Note:The Curves indicate the illuminated area and the average illumination when the luminaire is at different distance.

C Range: 0 - 360DEG
C Interval: 15.0DEG
Test Speed: HIGH
Temperature:25.3DEG
Operators:Meng Yongjian
Test Date:2017-01-09

γ Range: 0 - 90DEG
γ Interval: 1.0DEG
Test System:EVERFINE GO-2000B_V1 SYSTEM V2.0.288
Humidity:52%
Test Distance:5.850m [K=1.0000]
Remarks:

ISOLUX DIAGRAM

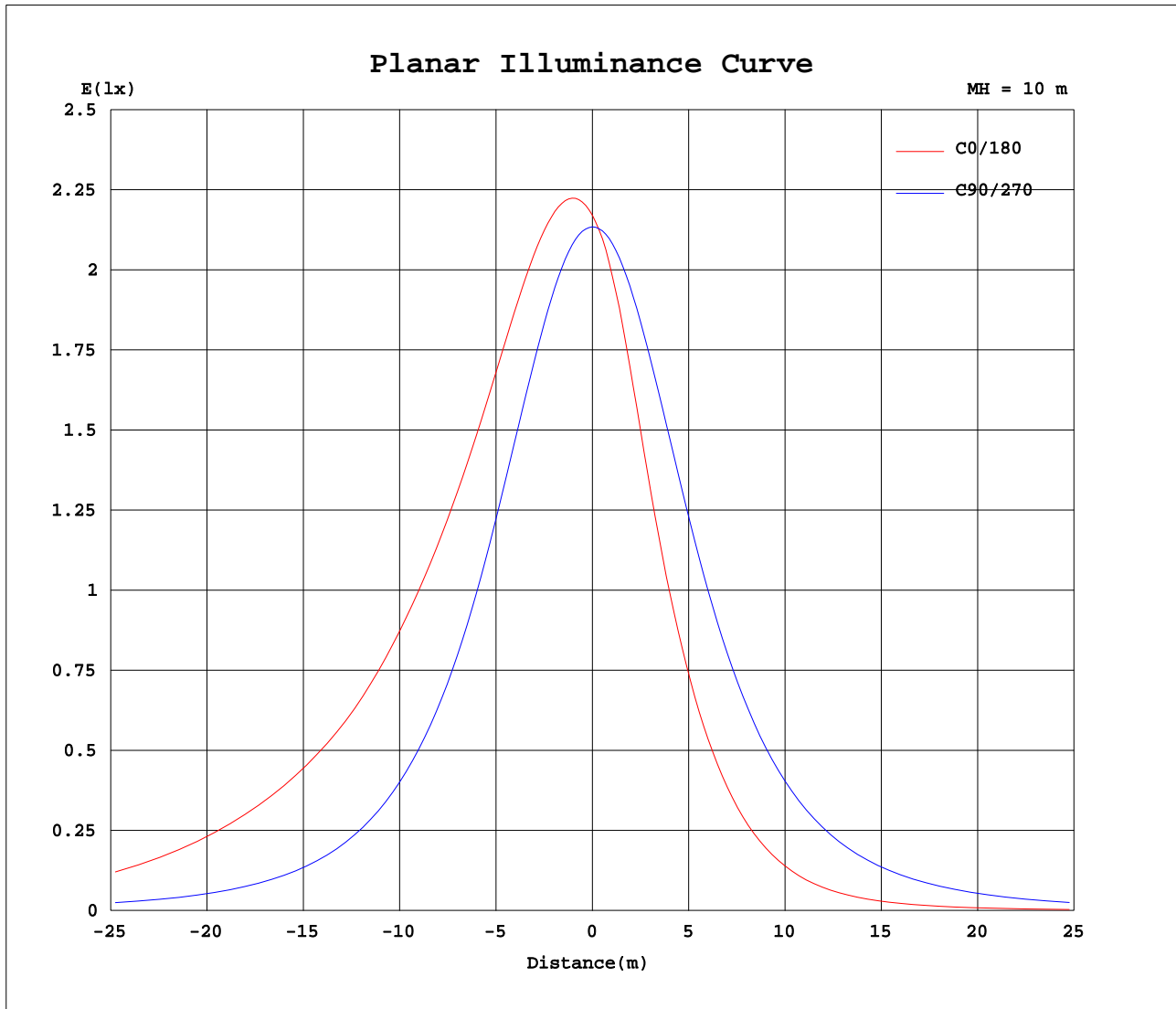
Test:U:220.6V I:0.0620A P:12.16W PF:0.8892 Lamp Flux:596.266x1 lm		
NAME: FW5-11W-830	TYPE:Downlight	SERIAL No.:
SPEC.:3000K	DIM.: L153mm*W45mm*H60mm	
MFR.: NEKO LIGHTING AG		



C Range: 0 - 360DEG
 C Interval: 15.0DEG
 Test Speed: HIGH
 Temperature:25.3DEG
 Operators:Meng Yongjian
 Test Date:2017-01-09

γ Range: 0 - 90DEG
 γ Interval: 1.0DEG
 Test System:EVERFINE GO-2000B_V1 SYSTEM V2.0.288
 Humidity:52%
 Test Distance:5.850m [K=1.0000]
 Remarks:

Planar Illuminance Curve



C Range: 0 - 360DEG
 C Interval: 15.0DEG
 Test Speed: HIGH
 Temperature: 25.3DEG
 Operators: Meng Yongjian
 Test Date: 2017-01-09

γ Range: 0 - 90DEG
 γ Interval: 1.0DEG
 Test System: EVERFINE GO-2000B_V1 SYSTEM V2.0.288
 Humidity: 52%
 Test Distance: 5.850m [K=1.0000]
 Remarks:

Photometric Data Table [cd]

G/C	0.0	15.0	30.0	45.0	60.0	75.0	90.0	105.0	120.0	135.0
0.0	217.1	216.0	215.6	214.8	214.4	213.8	213.4	213.1	212.7	212.5
3.0	222.1	220.9	219.9	218.3	216.7	214.8	212.9	211.1	209.3	207.9
6.0	226.1	224.8	223.1	220.7	217.9	214.7	211.3	208.0	204.6	201.6
9.0	229.1	227.7	225.4	222.1	218.0	213.4	208.3	203.6	197.9	193.0
12.0	231.3	229.8	226.9	222.5	216.9	210.9	204.1	197.8	189.6	182.8
15.0	233.0	231.3	227.6	222.0	215.0	207.4	198.9	190.8	180.2	170.4
18.0	233.9	232.1	227.6	220.9	212.3	203.1	192.8	182.4	169.2	157.4
21.0	234.3	232.3	227.0	219.2	208.9	197.9	185.8	173.2	157.3	143.4
24.0	234.6	232.3	226.0	216.9	205.0	192.0	178.1	163.3	144.9	128.7
27.0	234.9	232.3	224.8	214.1	200.4	185.5	169.6	152.9	132.0	115.6
30.0	235.5	232.4	223.6	211.0	195.4	178.4	160.6	141.9	119.1	103.0
33.0	236.7	233.0	222.5	207.8	189.9	170.8	151.3	130.4	106.5	91.04
36.0	238.5	234.1	221.8	204.6	184.1	163.1	141.9	118.9	94.69	79.65
39.0	240.8	235.8	221.5	201.4	178.4	155.4	132.4	107.9	83.68	69.20
42.0	243.6	237.9	221.5	198.5	172.7	147.7	122.9	96.94	73.27	59.82
45.0	246.8	240.3	221.8	195.9	167.1	140.1	113.4	86.17	63.30	51.16
48.0	249.9	242.7	222.2	193.3	161.6	132.3	104.1	75.57	54.25	43.33
51.0	252.8	244.7	222.2	190.7	156.3	124.4	94.74	65.37	46.23	36.50
54.0	257.2	247.7	221.8	187.9	150.9	116.6	85.52	55.75	38.85	30.54
57.0	261.3	250.9	222.0	184.4	145.2	108.8	76.86	46.91	32.25	25.17
60.0	263.3	252.5	221.3	180.1	139.1	101.1	68.54	38.86	26.52	20.65
63.0	260.0	249.8	218.4	175.5	132.3	93.27	60.27	31.52	21.58	16.87
66.0	246.7	238.8	210.4	168.6	124.8	85.31	52.31	25.03	17.26	13.66
69.0	218.4	214.4	193.3	158.1	117.0	77.13	44.79	19.54	13.69	10.88
72.0	173.8	173.9	163.1	141.0	106.9	68.70	37.04	14.90	10.68	8.578
75.0	120.4	122.8	121.1	114.2	93.85	59.80	29.36	11.13	8.130	6.546
78.0	71.38	74.12	76.27	79.61	74.72	50.26	21.57	8.000	5.979	4.692
81.0	34.58	36.76	39.08	44.82	48.60	39.43	13.72	5.433	3.980	3.236
84.0	9.541	10.96	12.94	17.72	22.50	24.93	7.442	3.291	2.383	1.846
87.0	0.4250	0.5346	0.6889	0.9266	3.395	7.764	3.700	1.430	0.9475	0.7215
90.0	0.1640	0.2033	0.2558	0.2514	0.2427	0.2186	0.2274	0.2514	0.3127	0.3520
G/C	150.0	165.0	180.0	195.0	210.0	225.0	240.0	255.0	270.0	285.0
0.0	212.1	212.1	212.1	216.0	215.6	214.8	214.4	213.8	213.4	213.1
3.0	206.5	205.9	210.5	209.7	209.9	210.1	211.1	211.9	213.0	214.1
6.0	198.3	196.7	201.0	200.3	201.9	203.7	206.5	208.8	211.5	214.1
9.0	188.4	185.7	189.2	189.0	191.9	194.9	199.8	204.3	208.7	212.7
12.0	175.7	171.9	174.8	174.9	179.2	184.5	191.5	198.5	204.7	210.3
15.0	161.8	157.1	159.2	159.7	165.1	171.8	182.1	191.3	199.6	206.8
18.0	147.1	141.9	143.5	144.2	150.1	158.5	170.9	182.8	193.6	202.6
21.0	132.5	127.0	128.3	129.5	135.3	144.3	158.8	173.5	186.6	197.4
24.0	118.8	113.6	114.5	115.7	120.8	130.2	146.3	163.5	178.9	191.6
27.0	105.7	100.6	101.3	102.5	107.5	116.6	133.0	152.9	170.5	185.0
30.0	93.20	88.22	88.81	89.76	94.78	103.9	119.7	141.7	161.6	178.0
33.0	81.41	77.02	77.41	78.43	82.73	91.80	107.2	130.4	152.4	170.5
36.0	70.77	66.42	66.58	67.50	71.96	80.28	95.40	119.1	143.0	162.8
39.0	60.61	56.56	56.58	57.35	61.87	69.72	84.36	108.1	133.8	155.2
42.0	51.50	47.69	47.58	48.35	52.66	60.18	74.04	97.11	123.8	147.5
45.0	43.46	39.80	39.41	40.28	44.50	51.47	64.26	86.23	114.4	139.9
48.0	36.43	32.58	31.99	32.99	37.30	43.66	55.21	75.64	105.0	132.4
51.0	30.10	26.45	25.76	26.78	30.87	36.81	47.14	65.23	95.60	124.7
54.0	24.74	21.39	20.58	21.60	25.40	30.83	39.70	55.71	86.47	117.0
57.0	20.31	17.18	16.33	17.34	20.87	25.44	33.05	47.02	77.76	109.1
60.0	16.56	13.70	12.82	13.84	17.09	20.95	27.28	39.02	69.49	101.4
63.0	13.42	10.96	10.17	11.08	13.87	17.14	22.30	31.77	61.31	93.67
66.0	10.88	8.787	8.057	8.898	11.31	13.94	17.93	25.41	53.37	85.65
69.0	8.751	7.000	6.354	7.117	9.116	11.13	14.30	19.95	45.91	77.46
72.0	6.839	5.350	4.818	5.443	7.168	8.834	11.26	15.40	38.27	68.92
75.0	5.118	4.095	3.685	4.149	5.385	6.760	8.616	11.62	30.66	59.96
78.0	3.802	3.071	2.758	3.110	4.018	4.865	6.384	8.426	23.05	50.45
81.0	2.552	2.053	1.840	2.084	2.728	3.367	4.340	5.822	15.32	39.91
84.0	1.439	1.176	1.060	1.199	1.548	1.937	2.637	3.558	8.749	26.39
87.0	0.5607	0.4669	0.4206	0.4787	0.6029	0.7749	1.076	1.591	4.534	9.430
90.0	0.3717	0.3761	0.3170	0.3323	0.3411	0.3083	0.2777	0.2165	0.3455	0.2427
G/C	300.0	315.0	330.0	345.0						
0.0	212.7	212.5	212.1	212.1						
3.0	215.1	216.0	216.5	216.9						
6.0	216.5	218.5	219.8	220.7						
9.0	216.6	219.9	222.2	223.5						
12.0	215.8	220.3	223.7	225.6						
15.0	214.0	219.9	224.5	227.0						
18.0	211.4	218.8	224.6	227.9						
21.0	208.2	217.2	224.2	228.1						

C Range: 0 - 360DEG

C Interval: 15.0DEG

Test Speed: HIGH

Temperature: 25.3DEG

Operators: Meng Yongjian

Test Date: 2017-01-09

γ Range: 0 - 90DEG

γ Interval: 1.0DEG

Test System: EVERFINE GO-2000B_V1 SYSTEM V2.0.288

Humidity: 52%

Test Distance: 5.850m [K=1.0000]

Remarks:

Photometric Data Table [cd]

24.0	204.3	214.9	223.2	228.0
27.0	199.8	212.1	222.0	228.0
30.0	194.8	209.0	220.7	228.0
33.0	189.4	205.8	219.6	228.6
36.0	183.6	202.5	218.8	229.6
39.0	177.9	199.3	218.4	231.2
42.0	172.2	196.3	218.3	233.2
45.0	166.7	193.5	218.5	235.5
48.0	161.2	190.9	218.7	237.8
51.0	155.8	188.2	218.7	239.7
54.0	150.4	185.3	218.2	242.4
57.0	144.7	181.9	218.0	245.3
60.0	138.6	177.5	217.2	246.8
63.0	131.7	172.8	214.5	244.2
66.0	124.1	165.8	207.4	233.6
69.0	116.1	155.7	192.0	210.2
72.0	106.6	139.6	164.4	171.5
75.0	94.29	114.7	124.0	122.2
78.0	76.80	81.42	80.07	74.36
81.0	52.47	46.88	42.53	37.16
84.0	26.04	19.59	15.49	11.76
87.0	5.786	1.183	0.6754	0.5112
90.0	0.2143	0.2143	0.2012	0.1815

C Range: 0 - 360DEG
C Interval: 15.0DEG
Test Speed: HIGH
Temperature: 25.3DEG
Operators: Meng Yongjian
Test Date: 2017-01-09

γ Range: 0 - 90DEG
γ Interval: 1.0DEG
Test System: EVERFINE GO-2000B_V1 SYSTEM V2.0.288
Humidity: 52%
Test Distance: 5.850m [K=1.0000]
Remarks: