

LED Downlight FUSION Series FS3-7W-830-15D



Light Output Ratio:	100.0%	
Luminaire Power:	8.206 W	
SHR Nominal:	0.00	Calculated using the TM5
SHR Maximum:	1.00	fine grid method.

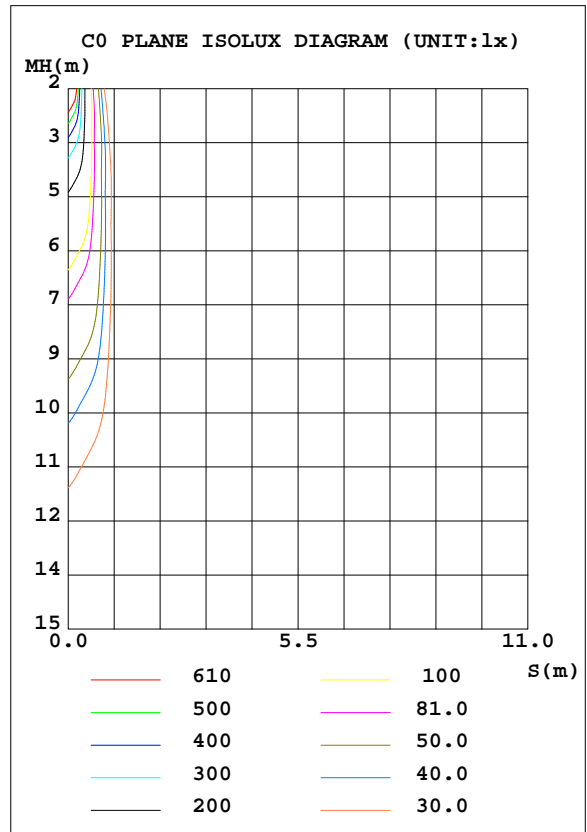
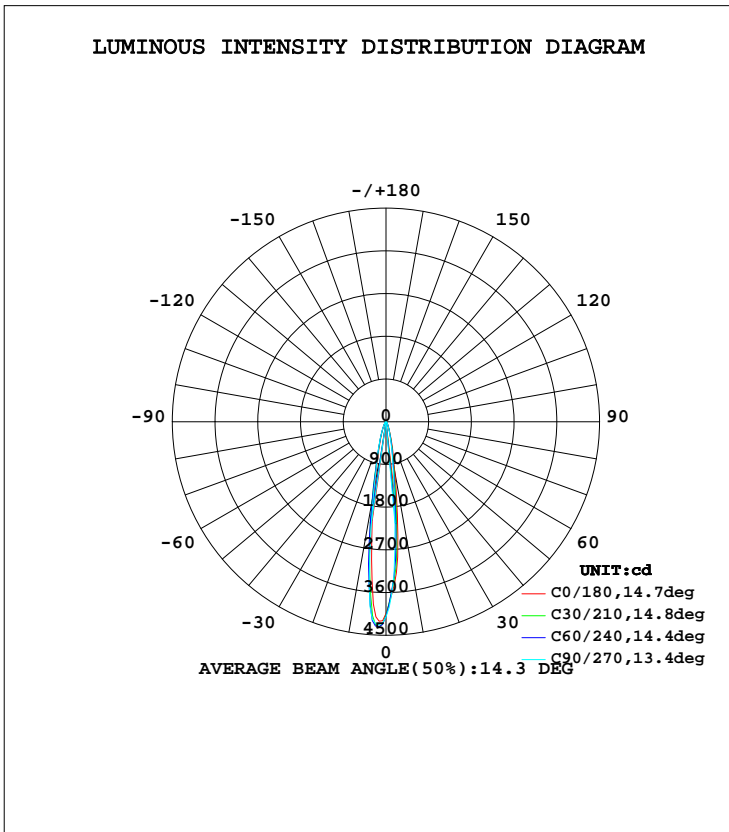
C Range: 0 - 360DEG
C Interval: 15.0DEG
Test Speed: HIGH
Temperature: 25.2DEG
Operators: Cao Chengpei
Test Date: 2017-01-07

γ Range: 0 - 90DEG
 γ Interval: 1.0DEG
Test System: EVERFINE GO-2000B_V1 SYSTEM V2.0.288
Humidity: 52%
Test Distance: 5.850m [K=1.0000]
Remarks:

LUMINAIRE PHOTOMETRIC TEST REPORT

Test:U:220.8V I:0.0455A P:8.206W PF:0.8178 Lamp Flux:551.029x1 lm		
NAME: FS3-7W-830-15D	TYPE:Downlight	SERIAL No.:
SPEC.:3000K	DIM.: L152mm*W45mm*H60mm	
MFR.: NEKO LIGHTING AG		

DATA OF LAMP		PHOTOMETRIC DATA				Eff: 67.15 lm/W
MODEL	CREE-3000K	I _{max} (cd)	4326	S/MH(C0/180)	0.28	
NOMINAL POWER(W)	9.0	LOR(%)	100.0	S/MH(C90/270)	0.29	
RATED VOLTAGE(V)	220	TOTAL FLUX(lm)	551.03	η UP, DN(C0-180)	0.0, 42.1	
NOMINAL FLUX(lm)	551.029	CIE CLASS	DIRECT	η UP, DN(C180-360)	0.0, 57.9	
LAMPS INSIDE	1	η up(%)	0.0	CIBSE SHR NOM	0.00	
TEST VOLTAGE(V)	220	η down(%)	100.0	CIBSE SHR MAX	1.00	



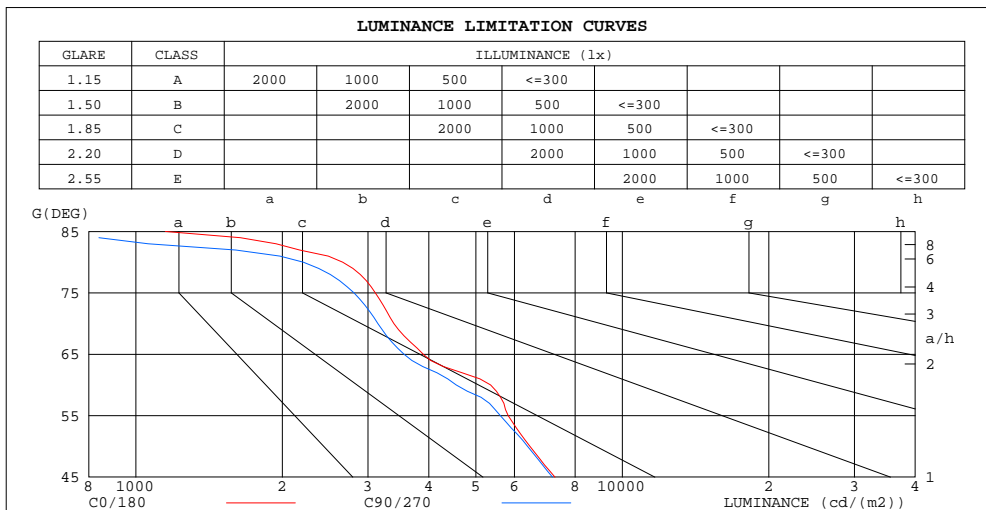
C Range: 0 - 360DEG
 C Interval: 15.0DEG
 Test Speed: HIGH
 Temperature:25.2DEG
 Operators:Cao Chengpei
 Test Date:2017-01-07

γ Range: 0 - 90DEG
 γ Interval: 1.0DEG
 Test System:EVERFINE GO-2000B_V1 SYSTEM V2.0.288
 Humidity:52%
 Test Distance:5.850m [K=1.0000]
 Remarks:

**ZONAL FLUX DIAGRAM
AND LUMINANCE LIMITATION CURVES**

ZONAL FLUX DIAGRAM:

γ	C0	C45	C90	C135	C180	C225	C270	C315	γ	Φ zone	Φ total	Φ lum,lamp
10	1076	935.2	816.9	870.4	1405	1673	1500	1433	0- 10	225.1	225.1	40.8,40.8
20	235.4	212.4	198.3	210.5	278.3	310.7	320.0	294.0	10- 20	152.3	377.3	68.5,68.5
30	78.87	77.09	74.37	77.82	93.04	98.16	94.94	89.38	20- 30	67.86	445.2	80.8,80.8
40	43.17	43.35	42.71	43.68	46.45	45.98	45.50	45.40	30- 40	37.60	482.8	87.6,87.6
50	28.40	28.59	28.08	28.04	29.49	29.59	29.69	29.89	40- 50	27.85	510.6	92.7,92.7
60	18.34	17.32	15.58	15.77	18.54	19.43	19.18	19.33	50- 60	20.83	531.5	96.4,96.4
70	7.937	7.678	7.357	7.530	8.351	8.647	8.894	9.009	60- 70	12.09	543.6	98.6,98.6
80	3.162	2.964	2.623	2.744	3.595	4.032	4.177	4.181	70- 80	6.068	549.6	99.7,99.7
90	0.0426	0.0362	0.0362	0.0362	0.0937	0.1406	0.1619	0.1576	80- 90	1.407	551.0	100,100
100									90-100			
110									100-110			
120									110-120			
130									120-130			
140									130-140			
150									140-150			
160									150-160			
170									160-170			
180									170-180			
DEG	LUMINOUS INTENSITY:cd									UNIT:lm		



LUMINANCE cd/(m2)		
G(DEG)	C0/180	C90/270
85	1150	665
80	2662	2209
75	3108	2808
70	3393	3145
65	3897	3557
60	5362	4555
55	5827	5614
50	6459	6387
45	7271	7188

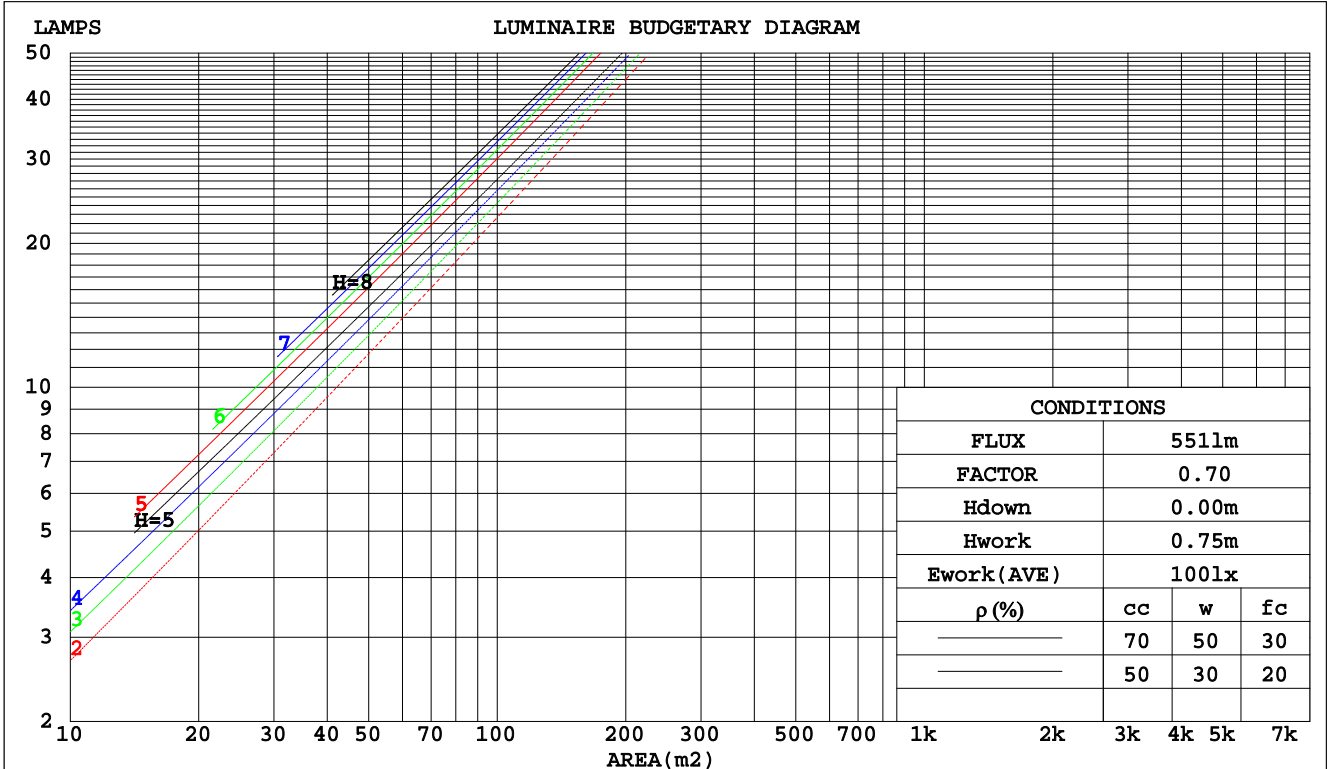
C Range: 0 - 360DEG
C Interval: 15.0DEG
Test Speed: HIGH
Temperature:25.2DEG
Operators:Cao Chengpei
Test Date:2017-01-07

γ Range: 0 - 90DEG
 γ Interval: 1.0DEG
Test System:EVERFINE GO-2000B_V1 SYSTEM V2.0.288
Humidity:52%
Test Distance:5.850m [K=1.0000]
Remarks:

CU AND LUMINAIRE BUDGETARY ESTIMATE DIAGRAM

Test:U:220.8V I:0.0455A P:8.206W PF:0.8178 Lamp Flux:551.029x1 lm		
NAME: FS3-7W-830-15D	TYPE:Downlight	SERIAL No.:
SPEC.:3000K	DIM.: L152mm*W45mm*H60mm	
MFR.: NEKO LIGHTING AG		

pcc	80%			70%			50%			30%			10%			0
pw	50%	30%	10%	50%	30%	10%	50%	30%	10%	50%	30%	10%	50%	30%	10%	0
pfc	20%			20%			20%			20%			20%			0
RCR	RCR:Room Cavity Ratio															
	Coefficients of Utilization(CU)															
0.0	1.19	1.19	1.19	1.16	1.16	1.16	1.11	1.11	1.11	1.06	1.06	1.06	1.02	1.02	1.02	.00
1.0	1.12	1.09	1.07	1.09	1.07	1.06	1.05	1.04	1.02	1.02	1.01	.99	.98	.97	.97	.95
2.0	1.05	1.02	.99	1.03	1.00	.98	1.00	.98	.95	.97	.95	.93	.95	.93	.91	.90
3.0	.00	.95	.92	.98	.94	.91	.96	.92	.90	.93	.91	.88	.91	.89	.87	.86
4.0	.95	.90	.87	.94	.90	.86	.92	.88	.85	.90	.87	.84	.88	.86	.83	.82
5.0	.91	.86	.83	.90	.86	.82	.88	.84	.81	.87	.83	.81	.85	.82	.80	.79
6.0	.87	.83	.79	.87	.82	.79	.85	.81	.78	.84	.80	.78	.83	.80	.77	.76
7.0	.84	.79	.76	.84	.79	.76	.82	.78	.76	.81	.78	.75	.80	.77	.75	.74
8.0	.81	.77	.74	.81	.77	.73	.80	.76	.73	.79	.75	.73	.78	.75	.73	.72
9.0	.79	.74	.71	.79	.74	.71	.78	.74	.71	.77	.73	.71	.76	.73	.71	.70
10.0	.77	.72	.69	.76	.72	.69	.76	.72	.69	.75	.71	.69	.74	.71	.69	.68



C Range: 0 - 360DEG
 C Interval: 15.0DEG
 Test Speed: HIGH
 Temperature:25.2DEG
 Operators:Cao Chengpei
 Test Date:2017-01-07

γ Range: 0 - 90DEG
 γ Interval: 1.0DEG
 Test System:EVERFINE GO-2000B_V1 SYSTEM V2.0.288
 Humidity:52%
 Test Distance:5.850m [K=1.0000]
 Remarks:

WEC AND CCEC

Test:U:220.8V I:0.0455A P:8.206W PF:0.8178 Lamp Flux:551.029x1 lm		
NAME: FS3-7W-830-15D	TYPE:Downlight	SERIAL No.:
SPEC.:3000K	DIM.: L152mm*W45mm*H60mm	
MFR.: NEKO LIGHTING AG		

ρcc	80%			70%			50%			30%			10%			0
ρw	50%	30%	10%	50%	30%	10%	50%	30%	10%	50%	30%	10%	50%	30%	10%	0
ρfc	20%			20%			20%			20%			20%			0
RCR	RCR:Room Cavity Ratio						Wall Exitance Coefficients(WEC)									
0.0																
1.0	.161	.092	.029	.155	.088	.028	.142	.081	.026	.131	.075	.024	.120	.070	.022	
2.0	.151	.083	.025	.145	.080	.025	.135	.075	.023	.125	.070	.022	.116	.066	.021	
3.0	.140	.075	.022	.135	.072	.022	.127	.069	.021	.118	.065	.020	.111	.061	.019	
4.0	.130	.068	.020	.126	.066	.020	.119	.063	.019	.112	.060	.018	.106	.057	.017	
5.0	.122	.062	.018	.118	.061	.018	.112	.058	.017	.106	.056	.017	.101	.054	.016	
6.0	.114	.057	.016	.111	.056	.016	.106	.054	.016	.101	.052	.015	.096	.050	.015	
7.0	.107	.053	.015	.105	.052	.015	.100	.051	.015	.096	.049	.014	.091	.047	.014	
8.0	.101	.050	.014	.099	.049	.014	.095	.047	.014	.091	.046	.013	.087	.045	.013	
9.0	.096	.046	.013	.094	.046	.013	.090	.045	.013	.087	.044	.012	.084	.042	.012	
10.0	.091	.044	.012	.090	.043	.012	.086	.042	.012	.083	.041	.012	.080	.040	.012	

ρcc	80%			70%			50%			30%			10%			0
ρw	50%	30%	10%	50%	30%	10%	50%	30%	10%	50%	30%	10%	50%	30%	10%	0
ρfc	20%			20%			20%			20%			20%			0
RCR	RCR:Room Cavity Ratio						Ceiling Cavity Exitance Coefficients(CCEC)									
0.0	.190	.190	.190	.163	.163	.163	.111	.111	.111	.064	.064	.064	.020	.020	.020	
1.0	.170	.157	.146	.145	.135	.126	.100	.093	.087	.057	.054	.051	.018	.017	.016	
2.0	.153	.133	.115	.131	.114	.099	.090	.079	.069	.052	.046	.041	.017	.015	.013	
3.0	.139	.113	.093	.120	.098	.080	.082	.068	.056	.047	.040	.033	.015	.013	.011	
4.0	.128	.098	.076	.109	.085	.066	.075	.059	.046	.044	.035	.028	.014	.011	.009	
5.0	.117	.086	.063	.101	.075	.055	.069	.052	.039	.040	.031	.023	.013	.010	.008	
6.0	.109	.076	.053	.093	.066	.047	.064	.046	.033	.037	.027	.020	.012	.009	.006	
7.0	.101	.068	.046	.087	.059	.040	.060	.042	.028	.035	.025	.017	.011	.008	.006	
8.0	.094	.062	.039	.081	.054	.034	.056	.038	.024	.033	.022	.015	.011	.007	.005	
9.0	.088	.056	.034	.076	.049	.030	.053	.034	.021	.031	.020	.013	.010	.007	.004	
10.0	.083	.051	.030	.072	.045	.026	.050	.031	.019	.029	.019	.011	.009	.006	.004	

C Range: 0 - 360DEG
 C Interval: 15.0DEG
 Test Speed: HIGH
 Temperature:25.2DEG
 Operators:Cao Chengpei
 Test Date:2017-01-07

γ Range: 0 - 90DEG
 γ Interval: 1.0DEG
 Test System:EVERFINE GO-2000B_V1 SYSTEM V2.0.288
 Humidity:52%
 Test Distance:5.850m [K=1.0000]
 Remarks:

UGR(Unified Glare Rating) Table

Test:U:220.8V I:0.0455A P:8.206W PF:0.8178 Lamp Flux:551.029x1 lm		
NAME: FS3-7W-830-15D	TYPE:Downlight	SERIAL No.:
SPEC.:3000K	DIM.: L152mm*W45mm*H60mm	
MFR.: NEKO LIGHTING AG		

ceiling/cavity	0.7	0.7	0.5	0.5	0.3	0.7	0.7	0.5	0.5	0.3
walls	0.5	0.3	0.5	0.3	0.3	0.5	0.3	0.5	0.3	0.3
working plane	0.2	0.2	0.2	0.2	0.2	0.2	0.2	0.2	0.2	0.2
Room dimensions	Viewed crosswise					Viewed endwise				
x = 2H y = 2H	14.2	14.9	14.4	15.1	15.2	13.9	14.7	14.1	14.8	15.0
3H	14.9	15.6	15.1	15.8	16.0	14.6	15.3	14.8	15.5	15.7
4H	15.2	15.9	15.4	16.1	16.3	14.8	15.5	15.1	15.7	16.0
6H	15.4	16.0	15.7	16.3	16.5	15.0	15.7	15.3	15.9	16.1
8H	15.4	16.1	15.7	16.3	16.6	15.0	15.7	15.3	15.9	16.2
12H	15.4	16.0	15.7	16.3	16.5	15.0	15.6	15.3	15.9	16.1
4H 2H	14.5	15.2	14.8	15.4	15.6	14.3	14.9	14.5	15.2	15.4
3H	15.3	15.9	15.6	16.2	16.5	15.1	15.7	15.4	15.9	16.2
4H	15.7	16.3	16.1	16.6	16.9	15.5	16.0	15.8	16.3	16.6
6H	16.0	16.5	16.4	16.9	17.2	15.7	16.2	16.1	16.5	16.9
8H	16.1	16.6	16.5	16.9	17.3	15.7	16.2	16.1	16.5	16.9
12H	16.1	16.5	16.5	16.9	17.3	15.7	16.1	16.1	16.5	16.9
8H 4H	15.8	16.3	16.2	16.6	17.0	15.6	16.0	16.0	16.4	16.7
6H	16.2	16.6	16.6	17.0	17.4	15.9	16.3	16.3	16.7	17.1
8H	16.3	16.6	16.7	17.0	17.5	15.9	16.3	16.4	16.7	17.1
12H	16.3	16.6	16.8	17.0	17.5	15.9	16.2	16.4	16.6	17.1
12H 4H	15.8	16.2	16.2	16.6	17.0	15.5	16.0	15.9	16.3	16.7
6H	16.2	16.5	16.6	16.9	17.4	15.9	16.2	16.3	16.6	17.1
8H	16.3	16.6	16.7	17.0	17.5	15.9	16.2	16.4	16.7	17.1
Variations with the observer position at spacings:										
S = 1.0H	+ 0.3 / - 0.5					+ 0.4 / - 0.5				
1.5H	+ 0.2 / - 0.3					+ 0.2 / - 0.3				
2.0H	+ 0.5 / - 1.1					+ 0.7 / - 1.1				

CIE Pub.117 Corrected 551.0 lm Total Lamp Luminous Flux. (8log(F/F0) = -2.1)

C Range: 0 - 360DEG
 C Interval: 15.0DEG
 Test Speed: HIGH
 Temperature:25.2DEG
 Operators:Cao Chengpei
 Test Date:2017-01-07

γ Range: 0 - 90DEG
 γ Interval: 1.0DEG
 Test System:EVERFINE GO-2000B_V1 SYSTEM V2.0.288
 Humidity:52%
 Test Distance:5.850m [K=1.0000]
 Remarks:

UTILIZATION FACTORS TABLE

Test:U:220.8V I:0.0455A P:8.206W PF:0.8178 Lamp Flux:551.029x1 lm		
NAME: FS3-7W-830-15D	TYPE:Downlight	SERIAL No.:
SPEC.:3000K	DIM.: L152mm*W45mm*H60mm	
MFR.: NEKO LIGHTING AG		

REFLECTANCE										
Ceiling	0.8	0.8	0.8	0.7	0.7	0.7	0.5	0.5	0.5	0
Walls	0.7	0.5	0.3	0.7	0.5	0.3	0.7	0.5	0.3	0
Working plane	0.2	0.2	0.2	0.2	0.2	0.2	0.2	0.2	0.2	0
ROOM INDEX	UTILIZATION FACTORS(PERCENT) $k(RI) \times RCR = 5$									
k = 0.60	84	77	73	83	77	73	82	76	72	69
0.80	92	85	81	91	85	81	90	84	80	76
1.00	96	90	86	96	90	86	94	90	85	81
1.25	101	95	91	100	94	91	98	93	90	85
1.50	104	98	95	102	98	94	100	96	93	88
2.00	107	102	99	105	101	98	103	99	96	91
2.50	109	105	101	107	103	100	104	101	98	92
3.00	111	107	104	109	105	103	105	103	101	94
4.00	113	110	107	111	108	106	107	105	103	96
5.00	114	112	110	112	110	108	108	106	105	97
ROOM INDEX	UF(total)									Direct
According to DIN EN 13032-2 2004			Suspended				SHRNOM = 1.25			

C Range: 0 - 360DEG
 C Interval: 15.0DEG
 Test Speed: HIGH
 Temperature:25.2DEG
 Operators:Cao Chengpei
 Test Date:2017-01-07

γ Range: 0 - 90DEG
 γ Interval: 1.0DEG
 Test System:EVERFINE GO-2000B_V1 SYSTEM V2.0.288
 Humidity:52%
 Test Distance:5.850m [K=1.0000]
 Remarks:

ISOCANDELA DIAGRAM

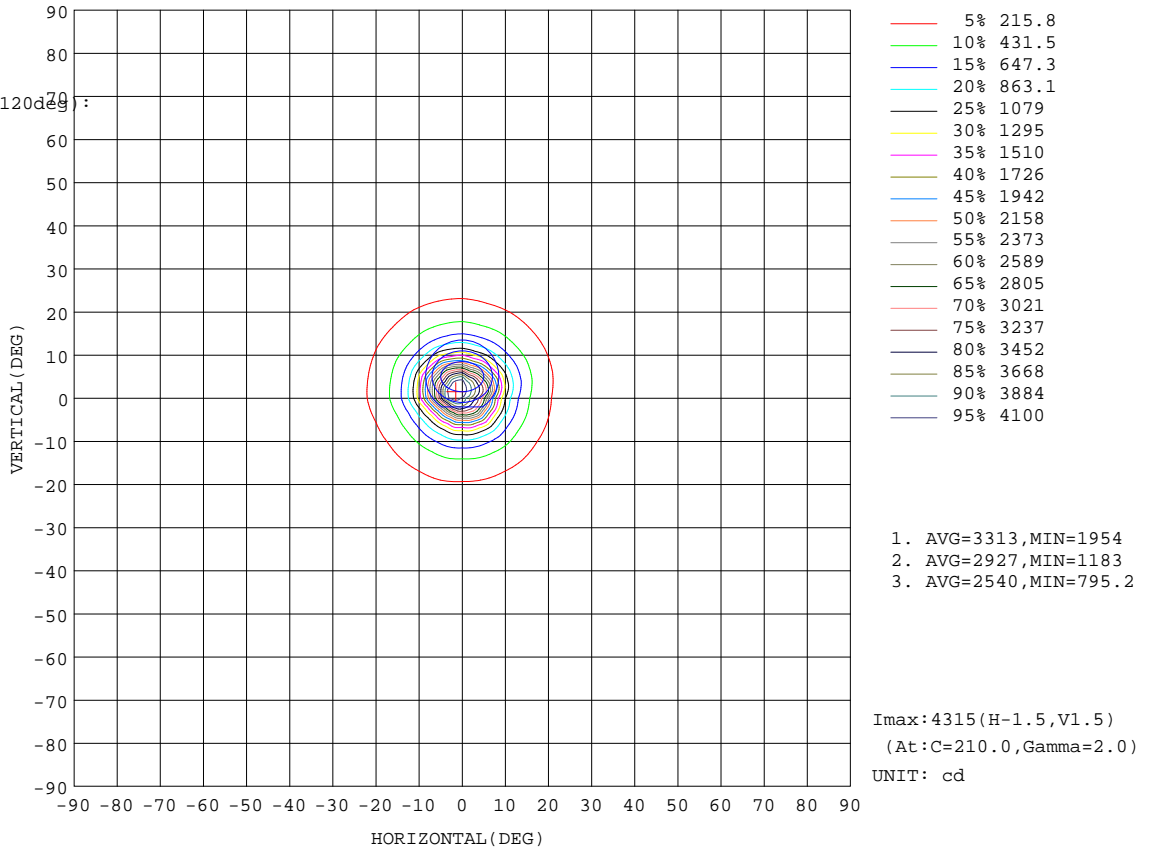
Test:U:220.8V I:0.0455A P:8.206W PF:0.8178 Lamp Flux:551.029x1 lm		
NAME: FS3-7W-830-15D	TYPE:Downlight	SERIAL No.:
SPEC.:3000K	DIM.: L152mm*W45mm*H60mm	
MFR.: NEKO LIGHTING AG		

Conical surface Flux(90deg):

497.58 lm
%lum = 90.3%
%lamp = 90.3%

Conical surface Flux(120deg):

531.47 lm
%lum = 96.4%
%lamp = 96.4%

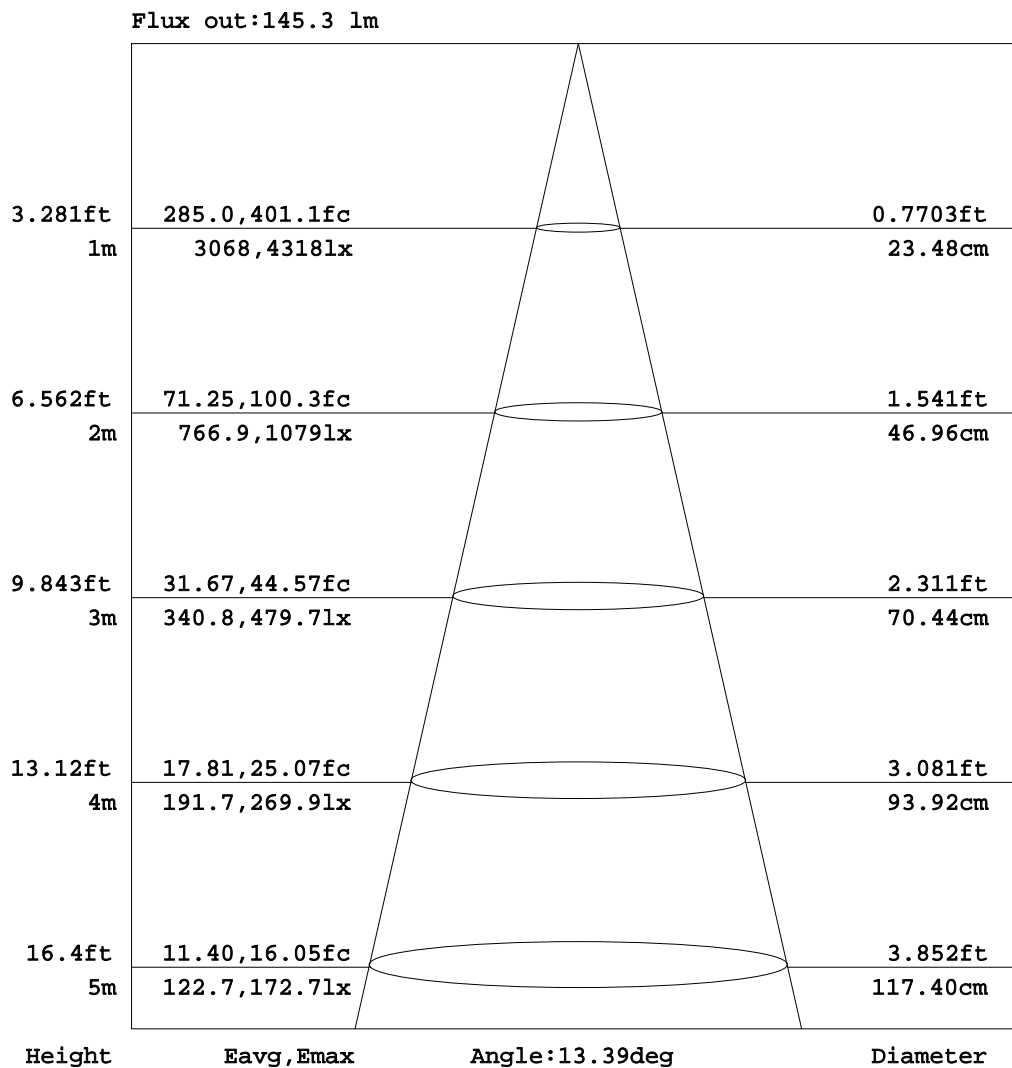


C Range: 0 - 360DEG
C Interval: 15.0DEG
Test Speed: HIGH
Temperature: 25.2DEG
Operators: Cao Chengpei
Test Date: 2017-01-07

γ Range: 0 - 90DEG
γ Interval: 1.0DEG
Test System: EVERFINE GO-2000B_V1 SYSTEM V2.0.288
Humidity: 52%
Test Distance: 5.850m [K=1.0000]
Remarks:

AAI Figure

Test:U:220.8V I:0.0455A P:8.206W PF:0.8178 Lamp Flux:551.029x1 lm		
NAME: FS3-7W-830-15D	TYPE:Downlight	SERIAL No.:
SPEC.:3000K	DIM.: L152mm*W45mm*H60mm	
MFR.: NEKO LIGHTING AG		



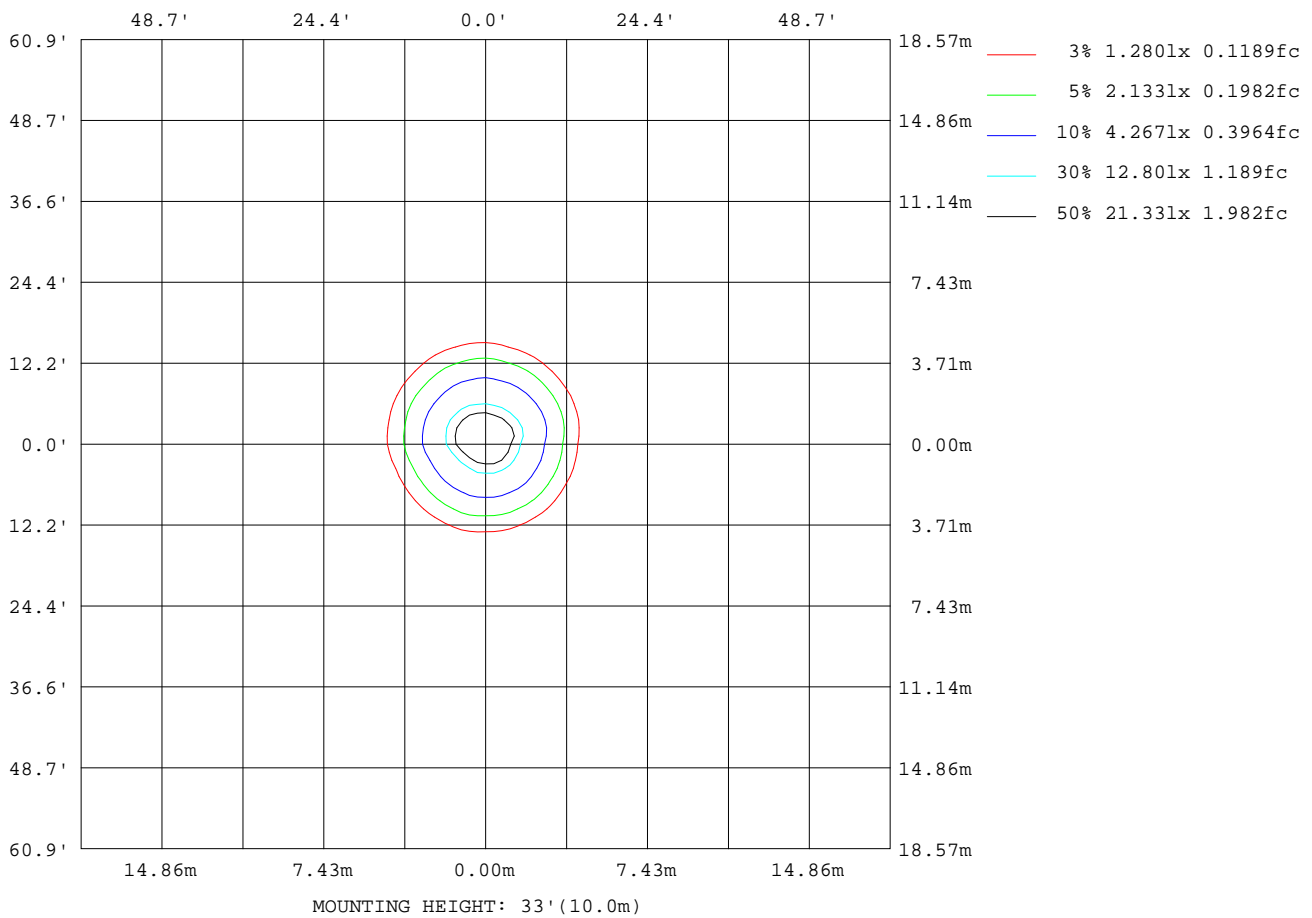
Note:The Curves indicate the illuminated area and the average illumination when the luminaire is at different distance.

C Range: 0 - 360DEG
C Interval: 15.0DEG
Test Speed: HIGH
Temperature:25.2DEG
Operators:Cao Chengpei
Test Date:2017-01-07

γ Range: 0 - 90DEG
γ Interval: 1.0DEG
Test System:EVERFINE GO-2000B_V1 SYSTEM V2.0.288
Humidity:52%
Test Distance:5.850m [K=1.0000]
Remarks:

ISOLUX DIAGRAM

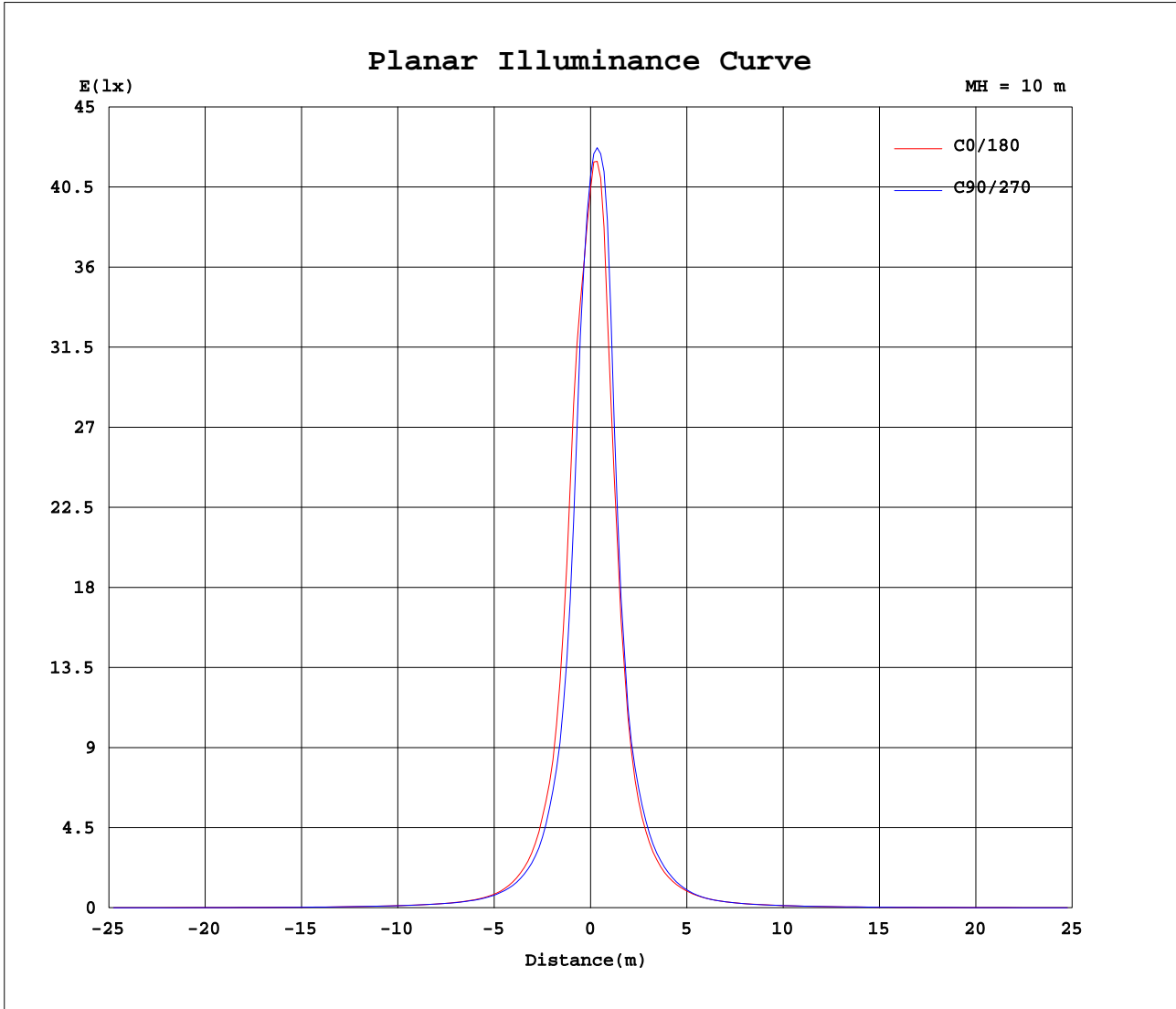
Test:U:220.8V I:0.0455A P:8.206W PF:0.8178 Lamp Flux:551.029x1 lm		
NAME: FS3-7W-830-15D	TYPE:Downlight	SERIAL No.:
SPEC.:3000K	DIM.: L152mm*W45mm*H60mm	
MFR.: NEKO LIGHTING AG		



C Range: 0 - 360DEG
C Interval: 15.0DEG
Test Speed: HIGH
Temperature:25.2DEG
Operators:Cao Chengpei
Test Date:2017-01-07

γ Range: 0 - 90DEG
γ Interval: 1.0DEG
Test System:EVERFINE GO-2000B_V1 SYSTEM V2.0.288
Humidity:52%
Test Distance:5.850m [K=1.0000]
Remarks:

Planar Illuminance Curve



C Range: 0 - 360DEG
 C Interval: 15.0DEG
 Test Speed: HIGH
 Temperature: 25.2DEG
 Operators: Cao Chengpei
 Test Date: 2017-01-07

γ Range: 0 - 90DEG
 γ Interval: 1.0DEG
 Test System: EVERFINE GO-2000B_V1 SYSTEM V2.0.288
 Humidity: 52%
 Test Distance: 5.850m [K=1.0000]
 Remarks:

LUMINOUS DISTRIBUTION INTENSITY DATA

Test:U:220.8V I:0.0455A P:8.206W PF:0.8178 Lamp Flux:551.029x1 lm		
NAME: FS3-7W-830-15D	TYPE:Downlight	SERIAL No.:
SPEC.:3000K	DIM.: L152mm*W45mm*H60mm	
MFR.: NEKO LIGHTING AG		

Table--2

UNIT: cd

C(DEG) γ (DEG)	285	300	315	330	345														
0	4117	4104	4119	4127	4133														
5	3569	3547	3421	3368	3234														
10	1372	1462	1433	1508	1365														
15	620	623	616	609	575														
20	305	306	294	288	269														
25	160	160	154	152	144														
30	90.8	90.7	89.4	88.4	85.6														
35	60.9	61.3	60.7	60.1	58.7														
40	44.9	45.3	45.4	45.5	44.9														
45	36.6	37.1	37.1	37.0	36.4														
50	29.6	29.9	29.9	30.0	29.4														
55	23.7	23.9	24.0	24.2	23.7														
60	19.2	19.3	19.3	19.5	18.9														
65	12.9	13.4	13.3	13.0	12.2														
70	8.84	8.98	9.01	8.98	8.53														
75	6.30	6.37	6.43	6.38	5.98														
80	4.06	4.10	4.18	4.10	3.70														
85	1.64	1.68	1.78	1.68	1.32														
90	0.15	0.14	0.16	0.14	0.10														

C Range: 0 - 360DEG
 C Interval: 15.0DEG
 Test Speed: HIGH
 Temperature:25.2DEG
 Operators:Cao Chengpei
 Test Date:2017-01-07

γ Range: 0 - 90DEG
 γ Interval: 1.0DEG
 Test System:EVERFINE GO-2000B_V1 SYSTEM V2.0.288
 Humidity:52%
 Test Distance:5.850m [K=1.0000]
 Remarks:

Photometric Data Table [cd]

G/C	0.0	15.0	30.0	45.0	60.0	75.0	90.0	105.0	120.0	135.0
0.0	4039	4077	4069	4106	4093	4116	4112	4117	4104	4119
3.0	3417	3373	3335	3341	3257	3260	3228	3324	3325	3486
6.0	2417	2328	2155	2149	1952	1864	1763	1827	1782	1901
9.0	1318	1258	1155	1146	1046	1012	963.2	992.6	965.5	1019
12.0	753.7	726.5	680.8	675.7	630.9	616.2	603.1	616.9	616.7	644.4
15.0	473.7	455.6	427.3	423.8	397.7	388.6	374.8	387.7	383.5	402.7
18.0	304.9	293.8	277.0	275.4	260.5	258.1	253.7	262.7	260.1	268.4
21.0	206.6	199.8	188.5	187.7	179.7	178.8	176.5	183.7	182.6	187.9
24.0	142.4	138.5	132.4	133.9	128.5	129.6	128.2	133.5	132.1	137.0
27.0	103.1	101.6	99.24	99.14	96.71	96.18	95.81	98.62	98.25	101.2
30.0	78.87	78.07	76.95	77.09	75.30	74.72	74.37	75.94	75.90	77.82
33.0	62.81	62.55	61.88	62.07	60.91	60.60	60.35	61.70	61.47	62.78
36.0	52.39	52.26	51.80	51.98	51.31	51.11	50.94	51.77	51.71	52.82
39.0	45.06	45.18	44.86	45.18	44.75	44.66	44.54	45.18	44.97	45.70
42.0	39.92	40.04	39.74	40.07	39.51	39.33	39.33	39.90	39.58	40.01
45.0	35.16	35.41	35.07	35.43	34.95	34.99	34.77	35.14	34.76	35.02
48.0	30.93	31.11	30.86	31.20	30.86	30.95	30.63	30.80	30.49	30.64
51.0	27.17	27.33	27.06	27.39	27.25	27.24	26.85	26.98	26.76	26.82
54.0	23.88	24.08	23.71	23.90	23.73	23.63	23.16	23.39	23.20	23.29
57.0	21.26	21.37	21.08	21.04	20.55	20.33	19.87	20.00	19.71	19.97
60.0	18.34	18.31	17.57	17.32	16.24	15.88	15.58	15.92	15.66	15.77
63.0	13.31	13.04	12.63	12.68	12.37	12.36	12.07	12.30	12.14	12.46
66.0	10.53	10.44	10.06	10.10	9.848	9.769	9.600	9.743	9.634	9.794
69.0	8.500	8.414	8.144	8.203	8.022	7.980	7.866	7.978	7.915	8.052
72.0	6.927	6.847	6.659	6.717	6.563	6.495	6.390	6.480	6.427	6.533
75.0	5.502	5.444	5.259	5.327	5.148	5.105	4.971	5.069	4.988	5.109
78.0	4.114	4.037	3.884	3.937	3.750	3.705	3.571	3.665	3.580	3.688
81.0	2.660	2.555	2.345	2.365	2.207	2.231	2.116	2.221	2.138	2.251
84.0	1.173	0.9658	0.7772	0.7539	0.6626	0.6158	0.6000	0.6667	0.6997	0.8765
87.0	0.3023	0.2378	0.2104	0.1803	0.1549	0.1187	0.1228	0.1315	0.1485	0.1698
90.0	0.0426	0.0341	0.0383	0.0362	0.0362	0.0362	0.0362	0.0362	0.0383	0.0362
G/C	150.0	165.0	180.0	195.0	210.0	225.0	240.0	255.0	270.0	285.0
0.0	4127	4133	4039	4077	4069	4106	4093	4116	4112	4117
3.0	3557	3825	4118	4199	4273	4271	4307	4290	4255	4113
6.0	2023	2388	2921	3075	3272	3271	3441	3409	3417	3067
9.0	1093	1285	1684	1893	2100	2065	2096	1887	1814	1693
12.0	670.0	742.5	941.0	1013	1106	1084	1084	1023	996.5	947.5
15.0	421.8	468.3	564.4	599.1	624.8	637.6	643.0	634.9	640.3	619.7
18.0	277.5	305.2	364.5	384.3	407.1	406.7	421.1	414.5	416.0	396.3
21.0	193.3	208.5	244.6	255.8	272.0	272.5	283.1	279.7	280.9	267.9
24.0	140.4	149.8	173.5	181.0	190.1	190.4	197.6	194.3	192.8	181.8
27.0	103.8	109.7	125.9	130.4	138.2	136.1	139.3	135.8	134.7	125.8
30.0	79.57	83.45	93.04	95.65	98.69	98.16	99.32	97.07	94.94	90.78
33.0	63.63	66.08	72.45	74.14	75.61	74.84	74.62	72.96	71.74	70.24
36.0	53.46	54.80	58.44	59.31	60.02	59.12	59.04	58.14	58.01	56.82
39.0	45.88	46.75	48.93	49.02	49.42	48.52	48.42	47.93	47.92	47.21
42.0	39.89	40.50	42.13	42.08	42.27	41.91	41.64	41.39	41.50	41.14
45.0	34.88	35.39	36.66	36.67	37.09	36.75	36.73	36.69	36.84	36.64
48.0	30.57	31.03	32.14	32.14	32.51	32.17	32.17	32.20	32.50	32.35
51.0	26.75	27.26	28.28	28.31	28.70	28.38	28.43	28.29	28.42	28.30
54.0	23.21	23.72	24.86	24.92	25.27	25.04	25.12	24.94	25.00	24.79
57.0	19.98	20.54	21.64	21.89	22.30	22.10	22.07	21.87	21.92	21.71
60.0	15.82	16.39	18.54	19.03	19.54	19.43	19.42	19.18	19.18	19.18
63.0	12.50	13.09	14.20	14.41	15.17	15.18	15.84	15.90	16.24	15.95
66.0	9.822	10.17	10.93	11.08	11.35	11.26	11.41	11.46	11.70	11.75
69.0	8.058	8.342	8.915	9.052	9.256	9.221	9.387	9.423	9.517	9.451
72.0	6.559	6.821	7.354	7.506	7.659	7.661	7.721	7.761	7.812	7.744
75.0	5.120	5.414	5.934	6.095	6.273	6.271	6.359	6.369	6.408	6.303
78.0	3.716	3.995	4.526	4.707	4.901	4.929	5.025	5.040	5.063	4.952
81.0	2.287	2.562	3.120	3.314	3.531	3.578	3.695	3.721	3.734	3.616
84.0	0.9733	1.130	1.497	1.670	1.973	2.004	2.232	2.352	2.411	2.241
87.0	0.2363	0.3120	0.5156	0.6160	0.6790	0.6884	0.7026	0.6676	0.6562	0.6274
90.0	0.0447	0.0426	0.0937	0.0405	0.1086	0.1406	0.1385	0.1683	0.1619	0.1512
G/C	300.0	315.0	330.0	345.0						
0.0	4104	4119	4127	4133						
3.0	4012	3889	3767	3624						
6.0	3115	3065	3079	2960						
9.0	1763	1766	1814	1678						
12.0	976.5	968.2	975.9	901.2						
15.0	623.0	615.9	609.2	575.1						
18.0	399.7	389.4	384.9	358.5						
21.0	268.2	258.4	252.1	237.0						

C Range: 0 - 360DEG
C Interval: 15.0DEG
Test Speed: HIGH
Temperature: 25.2DEG
Operators: Cao Chengpei
Test Date: 2017-01-07

γ Range: 0 - 90DEG
γ Interval: 1.0DEG
Test System: EVERFINE GO-2000B_V1 SYSTEM V2.0.288
Humidity: 52%
Test Distance: 5.850m [K=1.0000]
Remarks:

Photometric Data Table [cd]

24.0	181.7	174.5	171.4	162.0
27.0	126.5	121.6	119.4	114.5
30.0	90.73	89.38	88.36	85.57
33.0	70.24	69.68	68.98	67.43
36.0	57.31	56.82	56.53	55.41
39.0	47.62	47.68	47.72	47.03
42.0	41.56	41.63	41.84	41.20
45.0	37.06	37.06	36.97	36.40
48.0	32.70	32.66	32.68	32.04
51.0	28.60	28.63	28.78	28.16
54.0	24.98	25.10	25.33	24.80
57.0	21.82	21.91	22.19	21.79
60.0	19.27	19.33	19.46	18.92
63.0	16.23	16.11	16.00	15.13
66.0	12.04	11.97	11.84	11.25
69.0	9.624	9.636	9.626	9.159
72.0	7.829	7.889	7.842	7.429
75.0	6.367	6.429	6.380	5.982
78.0	4.999	5.072	5.003	4.612
81.0	3.652	3.721	3.635	3.222
84.0	2.236	2.301	2.137	1.736
87.0	0.6115	0.6096	0.5562	0.4965
90.0	0.1449	0.1576	0.1449	0.1001

C Range: 0 - 360DEG
 C Interval: 15.0DEG
 Test Speed: HIGH
 Temperature: 25.2DEG
 Operators: Cao Chengpei
 Test Date: 2017-01-07

γ Range: 0 - 90DEG
 γ Interval: 1.0DEG
 Test System: EVERFINE GO-2000B_V1 SYSTEM V2.0.288
 Humidity: 52%
 Test Distance: 5.850m [K=1.0000]
 Remarks: