

LED Downlight FUSION Series FS2-4W-830-15D



Light Output Ratio:	100.0%	
Luminaire Power:	5.703 W	
SHR Nominal:	0.00	Calculated using the TM5
SHR Maximum:	1.00	fine grid method.

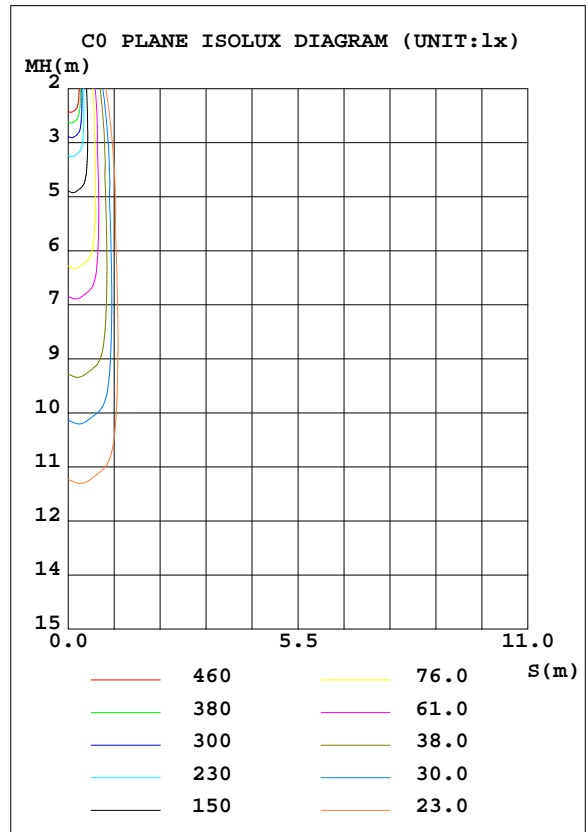
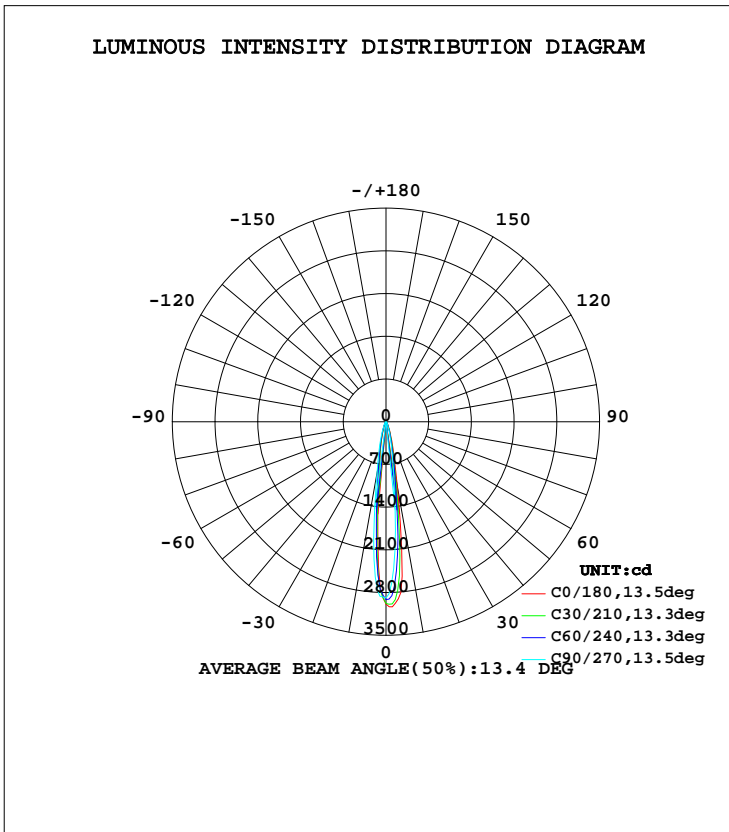
C Range: 0 - 360DEG
C Interval: 15.0DEG
Test Speed: HIGH
Temperature: 25.2DEG
Operators: Cao Chengpei
Test Date: 2017-01-07

γ Range: 0 - 90DEG
 γ Interval: 1.0DEG
Test System: EVERFINE GO-2000B_V1 SYSTEM V2.0.288
Humidity: 52%
Test Distance: 5.850m [K=1.0000]
Remarks:

LUMINAIRE PHOTOMETRIC TEST REPORT

Test:U:220.6V I:0.0329A P:5.703W PF:0.7856 Lamp Flux:366.918x1 lm		
NAME: FS2-4W-830-15D	TYPE:Downlight	SERIAL No.:
SPEC.:3000K	DIM.: L98mm*W45mm*H60mm	
MFR.: NEKO LIGHTING AG		

DATA OF LAMP		PHOTOMETRIC DATA				Eff: 64.34 lm/W
MODEL	CREE-3000K	I _{max} (cd)	3035	S/MH(C0/180)	0.18	
NOMINAL POWER(W)	6.0	LOR(%)	100.0	S/MH(C90/270)	0.26	
RATED VOLTAGE(V)	220	TOTAL FLUX(lm)	366.92	η UP, DN(C0-180)	0.0, 46.2	
NOMINAL FLUX(lm)	366.918	CIE CLASS	DIRECT	η UP, DN(C180-360)	0.0, 53.8	
LAMPS INSIDE	1	η up(%)	0.0	CIBSE SHR NOM	0.00	
TEST VOLTAGE(V)	220	η down(%)	100.0	CIBSE SHR MAX	1.00	



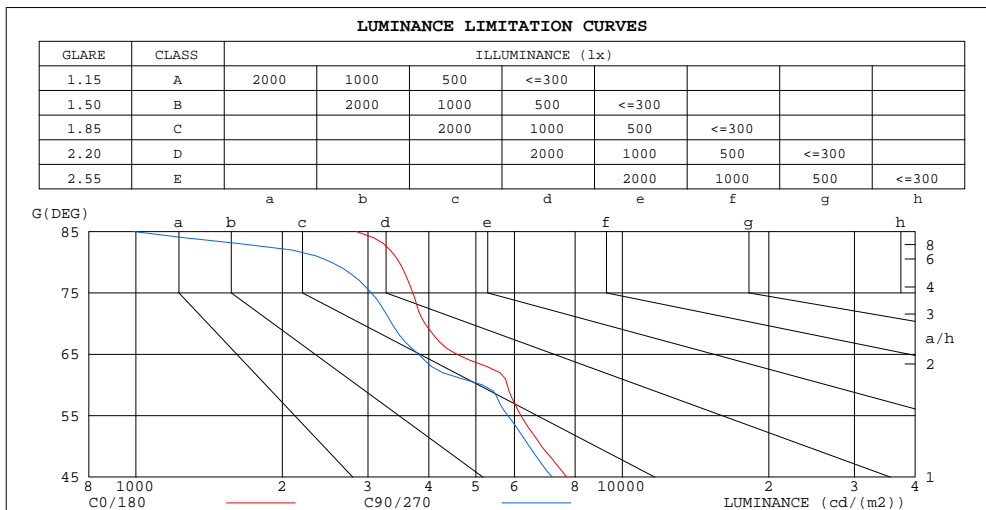
C Range: 0 - 360DEG
C Interval: 15.0DEG
Test Speed: HIGH
Temperature:25.2DEG
Operators:Cao Chengpei
Test Date:2017-01-07

γ Range: 0 - 90DEG
γ Interval: 1.0DEG
Test System:EVERFINE GO-2000B_V1 SYSTEM V2.0.288
Humidity:52%
Test Distance:5.850m [K=1.0000]
Remarks:

**ZONAL FLUX DIAGRAM
AND LUMINANCE LIMITATION CURVES**

ZONAL FLUX DIAGRAM:

γ	C0	C45	C90	C135	C180	C225	C270	C315	γ	Φ zone	Φ total	#lum,lamp
10	1059	843.6	640.8	515.9	560.9	640.3	860.1	1205	0- 10	152.0	152.0	41.4,41.4
20	210.4	172.3	140.3	117.7	130.1	154.3	197.5	245.2	10- 20	102.0	254.0	69.2,69.2
30	63.71	56.37	49.62	45.08	47.31	52.19	59.81	68.27	20- 30	44.44	298.5	81.3,81.3
40	30.03	29.05	27.36	26.21	26.39	27.50	29.44	31.01	30- 40	24.20	322.7	87.9,87.9
50	19.36	19.04	18.25	17.41	17.70	18.32	19.12	19.78	40- 50	17.79	340.4	92.8,92.8
60	12.79	12.15	11.37	10.13	11.05	12.13	12.63	12.99	50- 60	13.59	354.0	96.5,96.5
70	5.926	5.587	5.065	4.741	4.887	5.309	5.790	6.143	60- 70	7.962	362.0	98.7,98.7
80	2.664	2.351	1.931	1.591	1.803	2.156	2.546	2.846	70- 80	4.005	366.0	99.8,99.8
90	0.0788	0.0213	0.0234	0.0213	0.0170	0.0170	0.0618	0.1619	80- 90	0.9165	366.9	100,100
100									90-100			
110									100-110			
120									110-120			
130									120-130			
140									130-140			
150									140-150			
160									150-160			
170									160-170			
180									170-180			
DEG	LUMINOUS INTENSITY:cd									UNIT:lm		



LUMINANCE cd/(m2)		
G(DEG)	C0/180	C90/270
85	2837	987
80	3479	2522
75	3708	3049
70	3929	3358
65	4564	3812
60	5799	5159
55	6189	5819
50	6828	6439
45	7680	7177

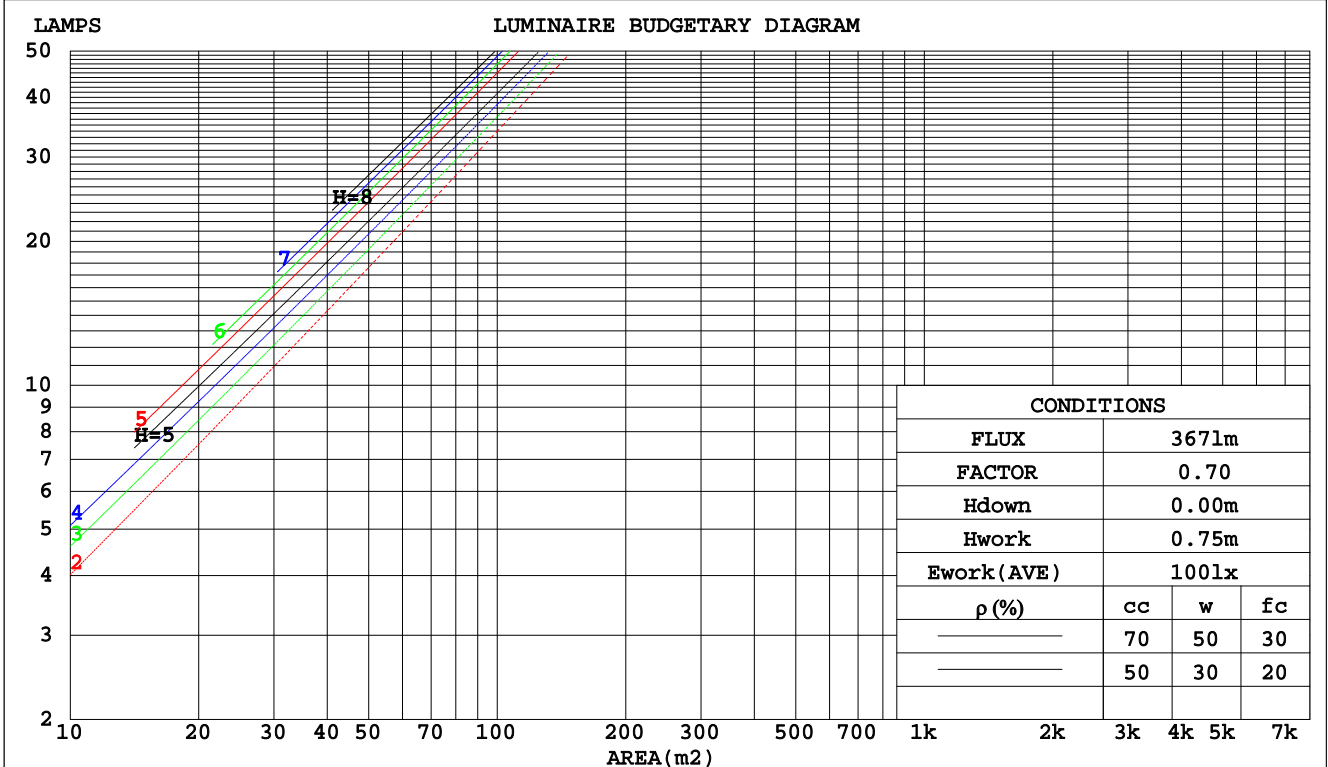
C Range: 0 - 360DEG
C Interval: 15.0DEG
Test Speed: HIGH
Temperature: 25.2DEG
Operators: Cao Chengpei
Test Date: 2017-01-07

γ Range: 0 - 90DEG
 γ Interval: 1.0DEG
Test System: EVERFINE GO-2000B_V1 SYSTEM V2.0.288
Humidity: 52%
Test Distance: 5.850m [K=1.0000]
Remarks:

CU AND LUMINAIRE BUDGETARY ESTIMATE DIAGRAM

Test:U:220.6V I:0.0329A P:5.703W PF:0.7856 Lamp Flux:366.918x1 lm		
NAME: FS2-4W-830-15D	TYPE:Downlight	SERIAL No.:
SPEC.:3000K	DIM.: L98mm*W45mm*H60mm	
MFR.: NEKO LIGHTING AG		

pcc	80%			70%			50%			30%			10%			0
	50%	30%	10%	50%	30%	10%	50%	30%	10%	50%	30%	10%	50%	30%	10%	0
pw																0
pfc																0
RCR	RCR:Room Cavity Ratio															
	Coefficients of Utilization(CU)															
0.0	1.19	1.19	1.19	1.16	1.16	1.16	1.11	1.11	1.11	1.06	1.06	1.06	1.02	1.02	1.02	1.00
1.0	1.12	1.09	1.07	1.10	1.08	1.06	1.06	1.04	1.03	1.02	1.01	.99	.98	.97	.97	.95
2.0	1.05	1.02	.99	1.04	1.00	.98	1.00	.98	.96	.97	.95	.94	.95	.93	.92	.90
3.0	.90	.96	.92	.98	.95	.91	.96	.93	.90	.94	.91	.89	.91	.89	.87	.86
4.0	.95	.91	.87	.94	.90	.87	.92	.88	.86	.90	.87	.85	.88	.86	.84	.82
5.0	.91	.86	.83	.90	.86	.83	.89	.85	.82	.87	.84	.81	.86	.83	.80	.79
6.0	.88	.83	.79	.87	.82	.79	.86	.82	.79	.84	.81	.78	.83	.80	.78	.77
7.0	.85	.80	.77	.84	.80	.76	.83	.79	.76	.82	.78	.76	.81	.78	.75	.74
8.0	.82	.77	.74	.81	.77	.74	.80	.76	.74	.79	.76	.73	.79	.75	.73	.72
9.0	.79	.75	.72	.79	.75	.72	.78	.74	.72	.77	.74	.71	.77	.73	.71	.70
10.0	.77	.73	.70	.77	.73	.70	.76	.72	.70	.75	.72	.69	.75	.72	.69	.68



C Range: 0 - 360DEG
 C Interval: 15.0DEG
 Test Speed: HIGH
 Temperature:25.2DEG
 Operators:Cao Chengpei
 Test Date:2017-01-07

γ Range: 0 - 90DEG
 γ Interval: 1.0DEG
 Test System:EVERFINE GO-2000B_V1 SYSTEM V2.0.288
 Humidity:52%
 Test Distance:5.850m [K=1.0000]
 Remarks:

WEC AND CCEC

Test:U:220.6V I:0.0329A P:5.703W PF:0.7856 Lamp Flux:366.918x1 lm		
NAME: FS2-4W-830-15D	TYPE:Downlight	SERIAL No.:
SPEC.:3000K	DIM.: L98mm*W45mm*H60mm	
MFR.: NEKO LIGHTING AG		

ρcc	80%			70%			50%			30%			10%			0
ρw	50%	30%	10%	50%	30%	10%	50%	30%	10%	50%	30%	10%	50%	30%	10%	0
ρfc	20%			20%			20%			20%			20%			0
RCR	RCR:Room Cavity Ratio						Wall Exitance Coefficients(WEC)									
0.0																
1.0	.160	.091	.029	.153	.088	.028	.141	.081	.026	.129	.075	.024	.119	.069	.022	
2.0	.149	.082	.025	.144	.079	.024	.133	.074	.023	.124	.070	.022	.115	.065	.021	
3.0	.139	.074	.022	.134	.072	.022	.125	.068	.021	.117	.064	.020	.110	.061	.019	
4.0	.129	.067	.020	.125	.066	.019	.118	.063	.019	.111	.060	.018	.105	.057	.017	
5.0	.121	.062	.018	.117	.060	.018	.111	.058	.017	.105	.055	.016	.099	.053	.016	
6.0	.113	.057	.016	.110	.056	.016	.105	.054	.016	.100	.052	.015	.095	.050	.015	
7.0	.107	.053	.015	.104	.052	.015	.099	.050	.014	.095	.049	.014	.090	.047	.014	
8.0	.101	.049	.014	.098	.048	.014	.094	.047	.013	.090	.046	.013	.086	.044	.013	
9.0	.095	.046	.013	.093	.045	.013	.090	.044	.013	.086	.043	.012	.083	.042	.012	
10.0	.090	.043	.012	.089	.043	.012	.085	.042	.012	.082	.041	.012	.079	.040	.011	

ρcc	80%			70%			50%			30%			10%			0
ρw	50%	30%	10%	50%	30%	10%	50%	30%	10%	50%	30%	10%	50%	30%	10%	0
ρfc	20%			20%			20%			20%			20%			0
RCR	RCR:Room Cavity Ratio						Ceiling Cavity Exitance Coefficients(CCEC)									
0.0	.190	.190	.190	.163	.163	.163	.111	.111	.111	.064	.064	.064	.020	.020	.020	
1.0	.170	.157	.146	.145	.135	.126	.099	.093	.087	.057	.054	.051	.018	.017	.016	
2.0	.153	.133	.115	.131	.114	.100	.090	.079	.069	.052	.046	.041	.017	.015	.013	
3.0	.139	.113	.093	.119	.098	.080	.082	.068	.056	.047	.040	.033	.015	.013	.011	
4.0	.127	.098	.076	.109	.085	.066	.075	.059	.047	.043	.035	.028	.014	.011	.009	
5.0	.117	.086	.063	.101	.075	.055	.069	.052	.039	.040	.031	.023	.013	.010	.008	
6.0	.108	.076	.054	.093	.066	.047	.064	.046	.033	.037	.027	.020	.012	.009	.006	
7.0	.101	.068	.046	.087	.059	.040	.060	.042	.028	.035	.024	.017	.011	.008	.006	
8.0	.094	.062	.040	.081	.053	.034	.056	.038	.024	.033	.022	.015	.011	.007	.005	
9.0	.088	.056	.034	.076	.049	.030	.052	.034	.021	.031	.020	.013	.010	.007	.004	
10.0	.083	.051	.030	.071	.045	.026	.049	.031	.019	.029	.019	.011	.009	.006	.004	

C Range: 0 - 360DEG
 C Interval: 15.0DEG
 Test Speed: HIGH
 Temperature:25.2DEG
 Operators:Cao Chengpei
 Test Date:2017-01-07

γ Range: 0 - 90DEG
 γ Interval: 1.0DEG
 Test System:EVERFINE GO-2000B_V1 SYSTEM V2.0.288
 Humidity:52%
 Test Distance:5.850m [K=1.0000]
 Remarks:

UGR(Unified Glare Rating) Table

Test:U:220.6V I:0.0329A P:5.703W PF:0.7856 Lamp Flux:366.918x1 lm		
NAME: FS2-4W-830-15D	TYPE:Downlight	SERIAL No.:
SPEC.:3000K	DIM.: L98mm*W45mm*H60mm	
MFR.: NEKO LIGHTING AG		

ceiling/cavity	0.7	0.7	0.5	0.5	0.3	0.7	0.7	0.5	0.5	0.3
walls	0.5	0.3	0.5	0.3	0.3	0.5	0.3	0.5	0.3	0.3
working plane	0.2	0.2	0.2	0.2	0.2	0.2	0.2	0.2	0.2	0.2
Room dimensions	Viewed crosswise					Viewed endwise				
x = 2H y = 2H	14.6	15.4	14.8	15.5	15.7	14.2	14.9	14.4	15.1	15.3
3H	15.4	16.1	15.7	16.3	16.5	14.9	15.6	15.1	15.8	16.0
4H	15.8	16.5	16.0	16.7	16.9	15.2	15.9	15.5	16.1	16.3
6H	16.1	16.7	16.4	16.9	17.2	15.4	16.0	15.7	16.3	16.5
8H	16.2	16.8	16.5	17.0	17.3	15.4	16.1	15.7	16.3	16.6
12H	16.2	16.8	16.5	17.1	17.4	15.4	16.0	15.7	16.3	16.5
4H 2H	15.0	15.6	15.2	15.9	16.1	14.6	15.3	14.9	15.5	15.7
3H	15.9	16.5	16.2	16.8	17.0	15.5	16.1	15.8	16.3	16.6
4H	16.4	16.9	16.7	17.2	17.5	15.9	16.4	16.2	16.7	17.0
6H	16.8	17.3	17.2	17.6	17.9	16.2	16.7	16.5	17.0	17.3
8H	16.9	17.4	17.3	17.7	18.1	16.2	16.7	16.6	17.0	17.4
12H	17.0	17.4	17.4	17.8	18.2	16.2	16.6	16.6	17.0	17.4
8H 4H	16.5	16.9	16.9	17.3	17.7	16.0	16.5	16.4	16.8	17.2
6H	17.0	17.4	17.4	17.8	18.2	16.4	16.8	16.9	17.2	17.6
8H	17.2	17.5	17.7	18.0	18.4	16.5	16.9	17.0	17.3	17.7
12H	17.3	17.6	17.8	18.1	18.5	16.5	16.8	17.0	17.3	17.7
12H 4H	16.5	16.9	16.9	17.3	17.6	16.0	16.4	16.4	16.8	17.2
6H	17.0	17.3	17.5	17.8	18.2	16.5	16.8	16.9	17.2	17.6
8H	17.2	17.5	17.7	18.0	18.4	16.6	16.9	17.1	17.3	17.8
Variations with the observer position at spacings:										
S = 1.0H	+ 0.4 / - 0.4					+ 0.3 / - 0.4				
1.5H	+ 0.1 / - 0.3					+ 0.2 / - 0.3				
2.0H	+ 0.4 / - 0.7					+ 0.5 / - 0.8				

CIE Pub.117 Corrected 366.9 lm Total Lamp Luminous Flux. (8log(F/F0) = -3.5)

C Range: 0 - 360DEG
 C Interval: 15.0DEG
 Test Speed: HIGH
 Temperature:25.2DEG
 Operators:Cao Chengpei
 Test Date:2017-01-07

γ Range: 0 - 90DEG
 γ Interval: 1.0DEG
 Test System:EVERFINE GO-2000B_V1 SYSTEM V2.0.288
 Humidity:52%
 Test Distance:5.850m [K=1.0000]
 Remarks:

UTILIZATION FACTORS TABLE

Test:U:220.6V I:0.0329A P:5.703W PF:0.7856 Lamp Flux:366.918x1 lm		
NAME: FS2-4W-830-15D	TYPE:Downlight	SERIAL No.:
SPEC.:3000K	DIM.: L98mm*W45mm*H60mm	
MFR.: NEKO LIGHTING AG		

REFLECTANCE										
Ceiling	0.8	0.8	0.8	0.7	0.7	0.7	0.5	0.5	0.5	0
Walls	0.7	0.5	0.3	0.7	0.5	0.3	0.7	0.5	0.3	0
Working plane	0.2	0.2	0.2	0.2	0.2	0.2	0.2	0.2	0.2	0
ROOM INDEX	UTILIZATION FACTORS(PERCENT) $k(RI) \times RCR = 5$									
k = 0.60	84	77	73	83	77	73	83	77	73	69
0.80	92	85	81	91	85	81	90	84	81	77
1.00	97	90	86	96	90	86	94	90	86	81
1.25	101	95	91	100	95	91	98	93	90	86
1.50	104	99	95	103	98	94	100	96	93	88
2.00	107	102	99	106	101	98	103	99	97	91
2.50	109	105	101	107	103	100	104	101	99	92
3.00	111	107	104	109	105	103	105	103	101	94
4.00	113	110	107	111	108	106	107	105	103	96
5.00	114	112	110	112	110	108	108	107	105	97
ROOM INDEX	UF(total)									Direct
According to DIN EN 13032-2 2004			Suspended				SHRNOM = 1.25			

C Range: 0 - 360DEG
 C Interval: 15.0DEG
 Test Speed: HIGH
 Temperature:25.2DEG
 Operators:Cao Chengpei
 Test Date:2017-01-07

γ Range: 0 - 90DEG
 γ Interval: 1.0DEG
 Test System:EVERFINE GO-2000B_V1 SYSTEM V2.0.288
 Humidity:52%
 Test Distance:5.850m [K=1.0000]
 Remarks:

ISOCANDELA DIAGRAM

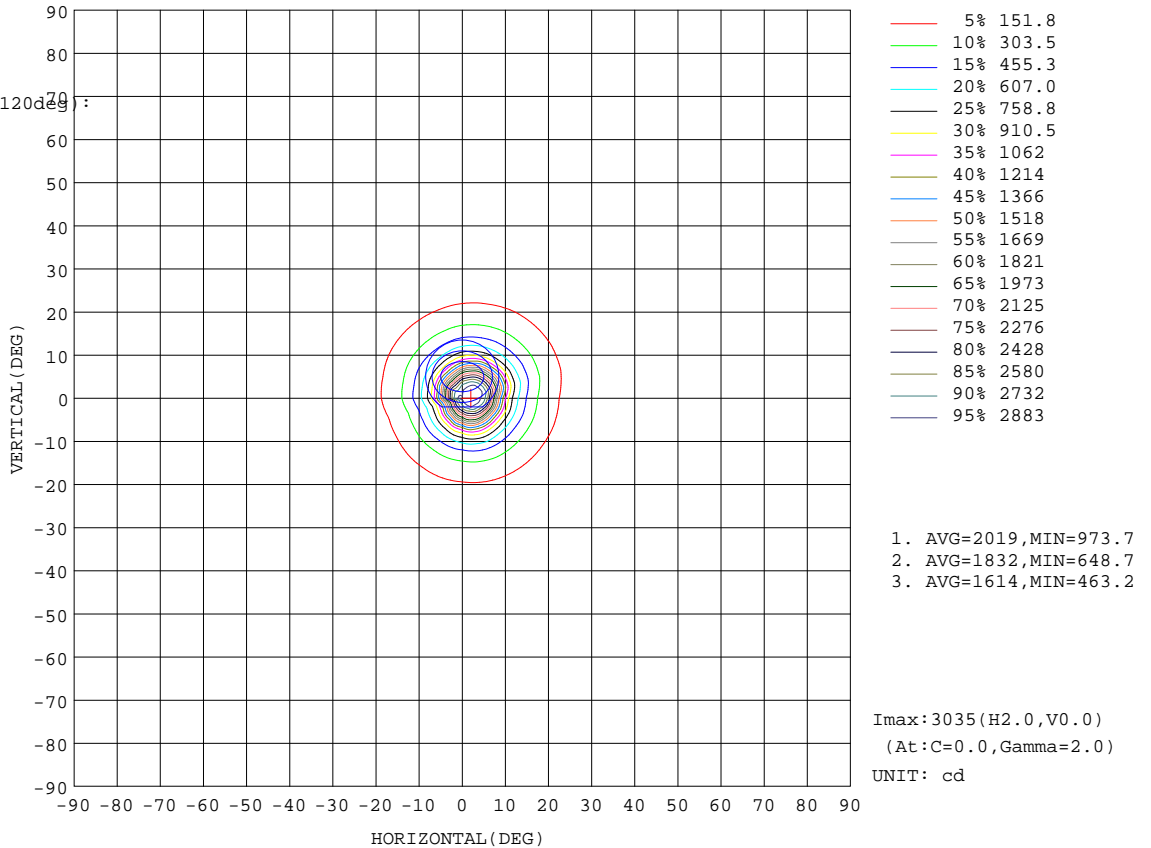
Test:U:220.6V I:0.0329A P:5.703W PF:0.7856 Lamp Flux:366.918x1 lm		
NAME: FS2-4W-830-15D	TYPE:Downlight	SERIAL No.:
SPEC.:3000K	DIM.: L98mm*W45mm*H60mm	
MFR.: NEKO LIGHTING AG		

Conical surface Flux(90deg):

332.09 lm
%lum = 90.5%
%lamp = 90.5%

Conical surface Flux(120deg):

354.03 lm
%lum = 96.5%
%lamp = 96.5%

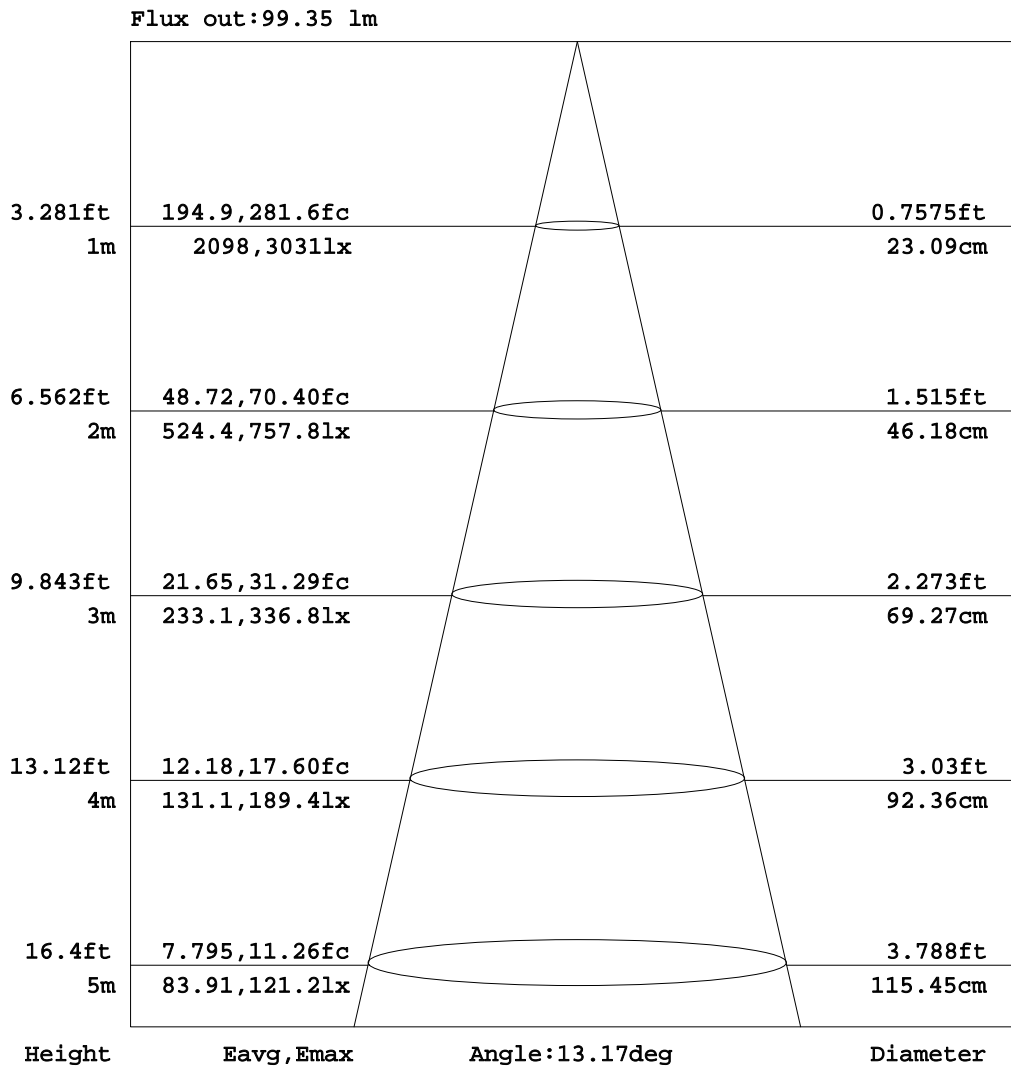


C Range: 0 - 360DEG
C Interval: 15.0DEG
Test Speed: HIGH
Temperature:25.2DEG
Operators:Cao Chengpei
Test Date:2017-01-07

γ Range: 0 - 90DEG
γ Interval: 1.0DEG
Test System:EVERFINE GO-2000B_V1 SYSTEM V2.0.288
Humidity:52%
Test Distance:5.850m [K=1.0000]
Remarks:

AAI Figure

Test:U:220.6V I:0.0329A P:5.703W PF:0.7856 Lamp Flux:366.918x1 lm		
NAME: FS2-4W-830-15D	TYPE:Downlight	SERIAL No.:
SPEC.:3000K	DIM.: L98mm*W45mm*H60mm	
MFR.: NEKO LIGHTING AG		



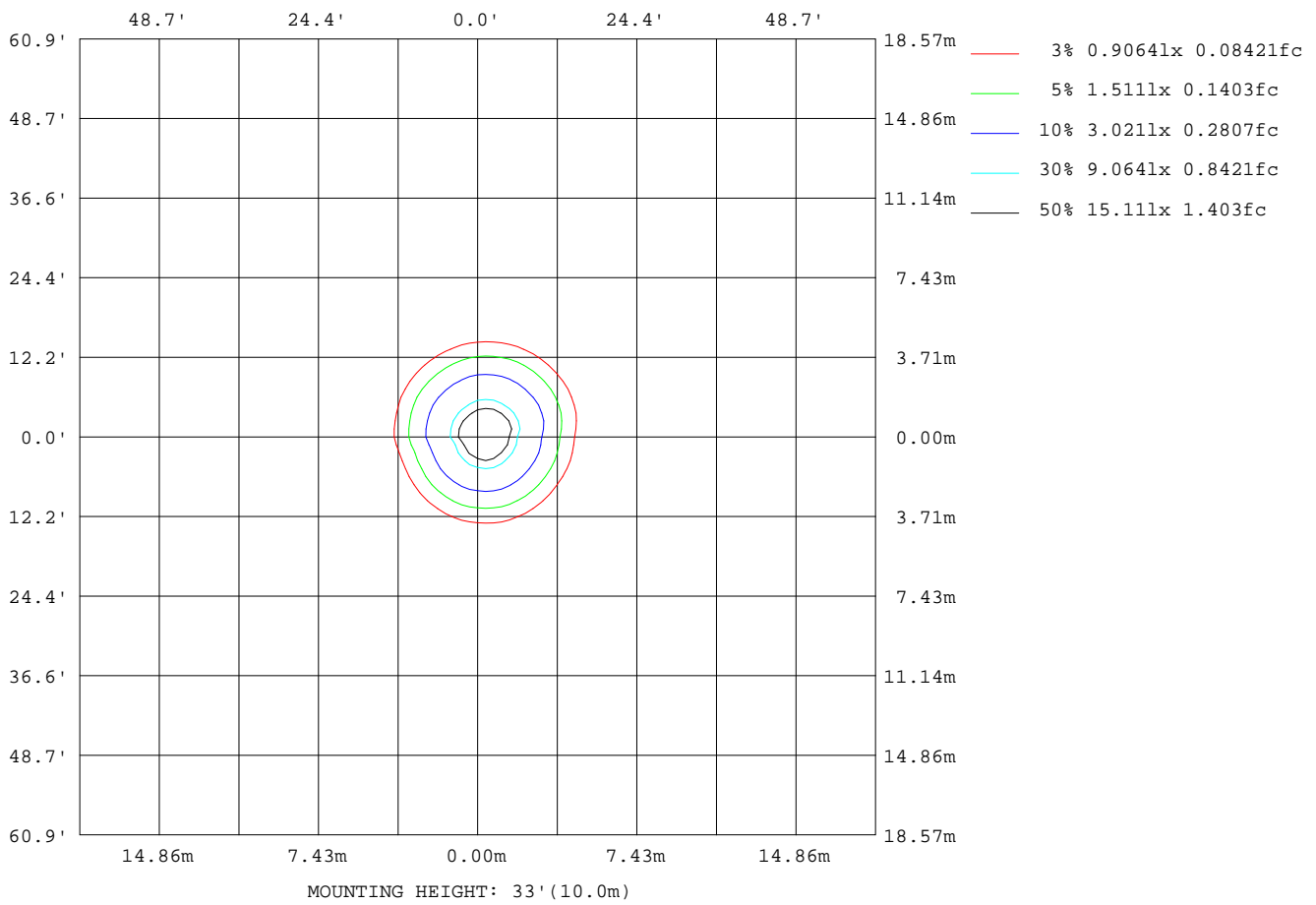
Note:The Curves indicate the illuminated area and the average illumination when the luminaire is at different distance.

C Range: 0 - 360DEG
C Interval: 15.0DEG
Test Speed: HIGH
Temperature:25.2DEG
Operators:Cao Chengpei
Test Date:2017-01-07

γ Range: 0 - 90DEG
γ Interval: 1.0DEG
Test System:EVERFINE GO-2000B_V1 SYSTEM V2.0.288
Humidity:52%
Test Distance:5.850m [K=1.0000]
Remarks:

ISOLUX DIAGRAM

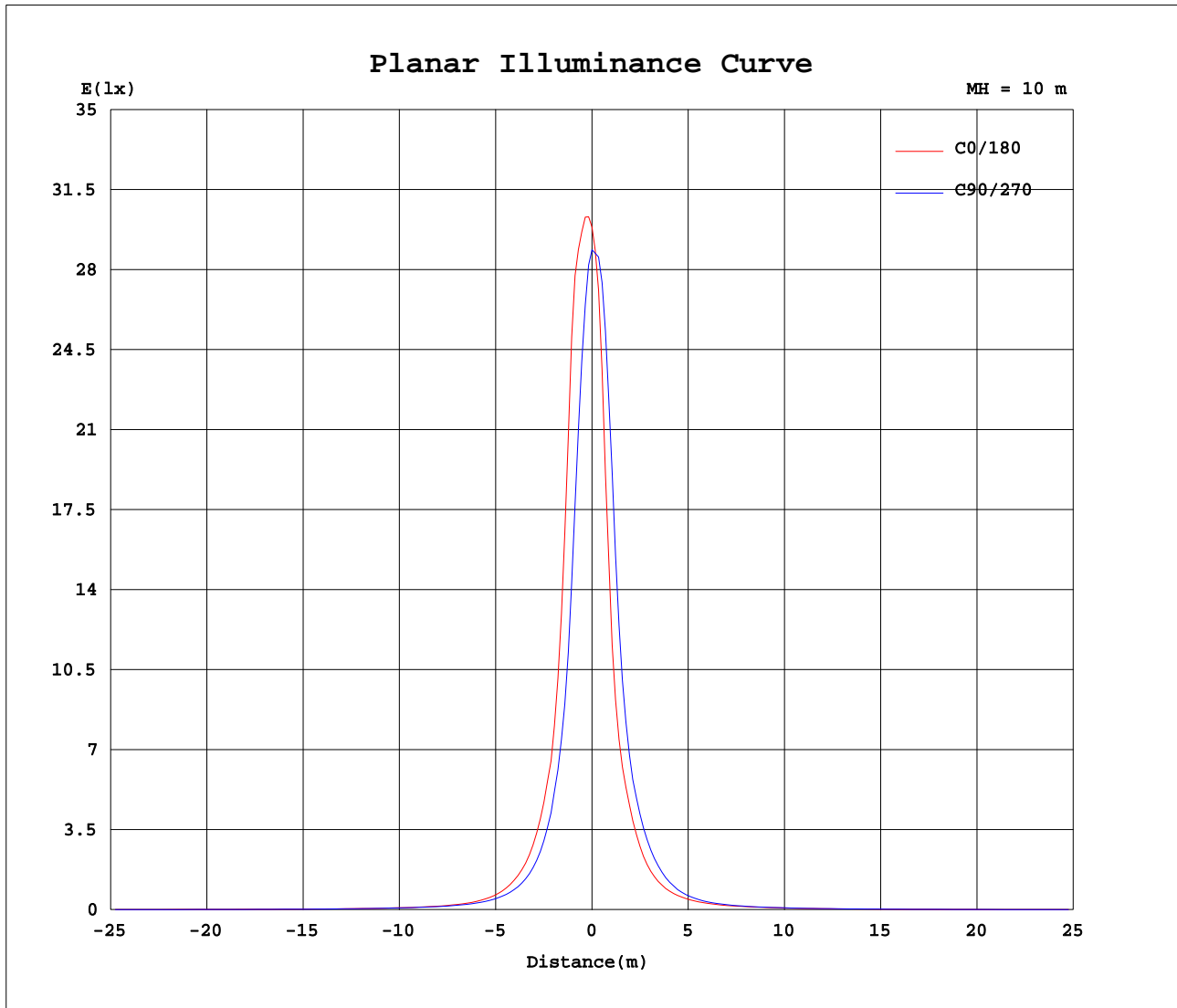
Test:U:220.6V I:0.0329A P:5.703W PF:0.7856 Lamp Flux:366.918x1 lm		
NAME: FS2-4W-830-15D	TYPE:Downlight	SERIAL No.:
SPEC.:3000K	DIM.: L98mm*W45mm*H60mm	
MFR.: NEKO LIGHTING AG		



C Range: 0 - 360DEG
 C Interval: 15.0DEG
 Test Speed: HIGH
 Temperature:25.2DEG
 Operators:Cao Chengpei
 Test Date:2017-01-07

γ Range: 0 - 90DEG
 γ Interval: 1.0DEG
 Test System:EVERFINE GO-2000B_V1 SYSTEM V2.0.288
 Humidity:52%
 Test Distance:5.850m [K=1.0000]
 Remarks:

Planar Illuminance Curve



C Range: 0 - 360DEG
C Interval: 15.0DEG
Test Speed: HIGH
Temperature: 25.2DEG
Operators: Cao Chengpei
Test Date: 2017-01-07

γ Range: 0 - 90DEG
 γ Interval: 1.0DEG
Test System: EVERFINE GO-2000B_V1 SYSTEM V2.0.288
Humidity: 52%
Test Distance: 5.850m [K=1.0000]
Remarks:

LUMINOUS DISTRIBUTION INTENSITY DATA

Test:U:220.6V I:0.0329A P:5.703W PF:0.7856 Lamp Flux:366.918x1 lm		
NAME: FS2-4W-830-15D	TYPE:Downlight	SERIAL No.:
SPEC.:3000K	DIM.: L98mm*W45mm*H60mm	
MFR.: NEKO LIGHTING AG		

Table--1

UNIT: cd

γ (DEG)	C(DEG)																		
	0	15	30	45	60	75	90	105	120	135	150	165	180	195	210	225	240	255	270
0	2986	2977	2978	2969	2914	2905	2887	2877	2857	2856	2839	2858	2986	2977	2978	2969	2914	2905	2887
5	2806	2722	2530	2377	2186	2036	1792	1653	1452	1380	1224	1196	1547	1521	1681	1782	1832	2024	2257
10	1059	1012	904	844	802	731	641	591	549	516	489	485	561	575	609	640	676	753	860
15	442	423	383	361	340	312	283	268	245	233	220	219	259	268	291	309	328	358	397
20	210	201	184	172	162	152	140	135	124	118	112	111	130	133	145	154	164	177	197
25	110	104	96.9	92.3	89.0	84.5	79.1	75.2	71.5	68.9	66.9	66.5	74.0	76.5	81.0	84.8	88.5	94.9	102
30	63.7	61.5	58.3	56.4	54.8	52.4	49.6	47.9	46.0	45.1	43.9	44.0	47.3	48.2	50.6	52.2	53.8	56.4	59.8
35	41.4	40.9	39.7	38.8	37.8	36.5	35.0	34.3	33.3	32.9	32.1	32.1	33.6	34.1	35.3	36.1	36.9	38.3	39.8
40	30.0	29.8	29.3	29.1	28.7	28.1	27.4	27.0	26.6	26.2	25.5	25.4	26.4	26.6	27.4	27.5	27.9	28.7	29.4
45	23.9	23.9	23.7	23.6	23.3	22.9	22.4	21.9	21.6	21.3	20.8	20.7	21.5	21.8	22.2	22.3	22.6	23.0	23.6
50	19.4	19.3	18.9	19.0	19.0	18.7	18.3	17.9	17.5	17.4	17.1	17.0	17.7	18.0	18.3	18.3	18.5	18.8	19.1
55	15.7	15.7	15.3	15.3	15.3	15.1	14.7	14.5	14.3	14.1	13.9	13.8	14.5	14.8	15.0	15.0	15.1	15.3	15.5
60	12.8	12.8	12.4	12.1	12.2	12.0	11.4	11.1	10.4	10.1	9.65	9.67	11.0	11.3	11.8	12.1	12.2	12.4	12.6
65	8.51	8.42	8.03	7.84	7.64	7.38	7.10	6.90	6.68	6.59	6.44	6.42	6.88	6.98	7.23	7.40	7.51	7.79	8.08
70	5.93	5.88	5.68	5.59	5.46	5.28	5.07	4.94	4.79	4.74	4.62	4.61	4.89	4.94	5.14	5.31	5.39	5.59	5.79
75	4.23	4.17	4.01	3.93	3.82	3.67	3.48	3.36	3.21	3.16	3.05	3.05	3.32	3.38	3.55	3.71	3.78	3.96	4.12
80	2.66	2.58	2.44	2.35	2.26	2.10	1.93	1.81	1.67	1.59	1.49	1.50	1.80	1.87	2.02	2.16	2.22	2.39	2.55
85	1.09	0.99	0.79	0.65	0.61	0.47	0.38	0.30	0.26	0.21	0.20	0.17	0.28	0.33	0.38	0.46	0.55	0.67	0.81
90	0.08	0.05	0.04	0.02	0.03	0.02	0.02	0.02	0.02	0.02	0.02	0.02	0.02	0.02	0.02	0.02	0.02	0.04	0.06

C Range: 0 - 360DEG	γ Range: 0 - 90DEG
C Interval: 15.0DEG	γ Interval: 1.0DEG
Test Speed: HIGH	Test System:EVERFINE GO-2000B_V1 SYSTEM V2.0.288
Temperature:25.2DEG	Humidity:52%
Operators:Cao Chengpei	Test Distance:5.850m [K=1.0000]
Test Date:2017-01-07	Remarks:

LUMINOUS DISTRIBUTION INTENSITY DATA

Test:U:220.6V I:0.0329A P:5.703W PF:0.7856 Lamp Flux:366.918x1 lm		
NAME: FS2-4W-830-15D	TYPE:Downlight	SERIAL No.:
SPEC.:3000K	DIM.: L98mm*W45mm*H60mm	
MFR.: NEKO LIGHTING AG		

Table--2

UNIT: cd

C(DEG) γ (DEG)	285	300	315	330	345														
0	2877	2857	2856	2839	2858														
5	2406	2604	2742	2838	2870														
10	959	1087	1205	1354	1343														
15	427	464	490	518	518														
20	214	233	245	255	246														
25	110	118	125	131	128														
30	62.6	65.6	68.3	70.4	70.4														
35	40.9	42.3	43.4	44.3	44.4														
40	29.9	30.5	31.0	31.8	31.9														
45	24.0	24.4	24.6	24.9	24.9														
50	19.3	19.7	19.8	20.0	20.2														
55	15.7	16.0	16.1	16.3	16.4														
60	12.8	13.1	13.0	13.2	13.2														
65	8.36	8.72	8.88	9.19	9.30														
70	5.89	6.07	6.14	6.26	6.30														
75	4.19	4.32	4.40	4.48	4.50														
80	2.64	2.76	2.85	2.92	2.94														
85	0.96	1.17	1.29	1.37	1.40														
90	0.10	0.11	0.16	0.17	0.19														

C Range: 0 - 360DEG
 C Interval: 15.0DEG
 Test Speed: HIGH
 Temperature:25.2DEG
 Operators:Cao Chengpei
 Test Date:2017-01-07

γ Range: 0 - 90DEG
 γ Interval: 1.0DEG
 Test System:EVERFINE GO-2000B_V1 SYSTEM V2.0.288
 Humidity:52%
 Test Distance:5.850m [K=1.0000]
 Remarks:

Photometric Data Table [cd]

G/C	0.0	15.0	30.0	45.0	60.0	75.0	90.0	105.0	120.0	135.0
0.0	2986	2977	2978	2969	2914	2905	2887	2877	2857	2856
3.0	2977	2964	2919	2867	2693	2570	2407	2318	2173	2092
6.0	2546	2434	2205	2048	1893	1708	1454	1348	1147	1067
9.0	1342	1275	1125	1040	972.6	882.2	773.4	713.6	637.4	603.3
12.0	695.6	673.8	628.2	576.6	562.6	502.1	453.1	428.5	394.4	378.3
15.0	442.1	423.4	383.4	360.7	339.7	312.1	283.2	267.9	245.5	233.5
18.0	279.5	265.9	242.8	227.2	213.7	199.4	182.8	173.5	160.4	152.8
21.0	184.3	176.3	161.1	150.9	142.2	135.2	123.9	117.8	110.2	104.7
24.0	124.6	117.7	109.0	103.5	99.62	94.20	87.85	83.64	79.07	76.14
27.0	86.69	82.99	78.15	74.83	72.46	68.95	65.05	61.84	58.89	57.26
30.0	63.71	61.47	58.33	56.37	54.77	52.40	49.62	47.90	46.01	45.08
33.0	47.93	47.14	45.49	44.39	43.23	41.69	39.94	38.88	37.60	36.97
36.0	38.72	38.31	37.22	36.29	35.29	34.26	33.05	32.42	31.63	31.21
39.0	31.79	31.55	30.80	30.47	30.03	29.35	28.55	28.11	27.65	27.33
42.0	27.23	27.19	26.80	26.68	26.32	25.85	25.23	24.89	24.55	24.18
45.0	23.95	23.95	23.68	23.58	23.29	22.91	22.38	21.95	21.60	21.28
48.0	21.15	21.13	20.80	20.75	20.56	20.24	19.78	19.44	19.06	18.89
51.0	18.58	18.54	18.10	18.23	18.21	17.97	17.53	17.18	16.82	16.71
54.0	16.33	16.38	15.96	16.07	16.01	15.84	15.41	15.13	14.90	14.73
57.0	14.41	14.43	14.05	13.95	13.91	13.76	13.45	13.32	13.19	13.00
60.0	12.79	12.76	12.37	12.15	12.15	11.95	11.37	11.07	10.45	10.13
63.0	10.55	10.26	9.653	9.306	8.971	8.523	8.117	7.911	7.697	7.573
66.0	7.801	7.739	7.437	7.299	7.148	6.896	6.614	6.424	6.226	6.151
69.0	6.344	6.289	6.072	5.966	5.822	5.638	5.408	5.267	5.114	5.067
72.0	5.200	5.139	4.981	4.897	4.780	4.618	4.424	4.300	4.158	4.102
75.0	4.232	4.167	4.011	3.932	3.821	3.670	3.480	3.361	3.212	3.161
78.0	3.284	3.201	3.063	2.974	2.886	2.733	2.549	2.430	2.291	2.226
81.0	2.355	2.266	2.131	2.038	1.952	1.797	1.624	1.492	1.341	1.251
84.0	1.421	1.328	1.193	1.072	0.9252	0.7599	0.5789	0.4755	0.3989	0.3354
87.0	0.4395	0.3781	0.3300	0.2612	0.2551	0.1783	0.1439	0.0911	0.0797	0.0403
90.0	0.0788	0.0469	0.0426	0.0213	0.0256	0.0213	0.0234	0.0213	0.0213	0.0213
G/C	150.0	165.0	180.0	195.0	210.0	225.0	240.0	255.0	270.0	285.0
0.0	2839	2858	2977	2986	2978	2969	2914	2905	2887	2877
3.0	1950	1947	2369	2390	2504	2560	2522	2625	2754	2828
6.0	969.5	952.3	1177	1202	1370	1419	1517	1671	1945	2132
9.0	576.9	561.9	648.5	656.0	707.1	753.8	806.7	907.3	1042	1176
12.0	355.7	354.2	416.4	426.2	459.4	484.3	508.0	556.2	608.1	661.3
15.0	220.4	219.2	259.3	267.5	290.8	309.0	328.0	358.2	397.3	426.9
18.0	143.9	143.6	168.0	175.4	190.9	203.0	214.0	234.1	260.8	282.7
21.0	100.1	99.53	113.5	118.0	128.8	135.6	143.9	155.4	172.0	186.5
24.0	73.28	73.24	81.68	84.50	89.85	94.23	99.06	106.4	115.7	124.7
27.0	55.34	55.42	61.04	63.28	66.46	69.33	71.91	76.37	81.75	86.13
30.0	43.88	44.01	47.31	48.24	50.57	52.19	53.76	56.37	59.81	62.61
33.0	36.09	36.04	38.41	39.07	40.61	41.75	42.55	44.07	45.95	47.19
36.0	30.50	30.46	31.79	32.14	33.22	33.86	34.51	35.90	37.23	38.16
39.0	26.63	26.51	27.50	27.75	28.62	28.86	29.19	30.10	30.97	31.60
42.0	23.55	23.42	24.34	24.64	25.16	25.02	25.56	26.10	26.86	27.20
45.0	20.77	20.67	21.48	21.76	22.23	22.33	22.62	23.03	23.61	24.00
48.0	18.48	18.39	19.14	19.39	19.72	19.74	19.91	20.28	20.74	21.10
51.0	16.41	16.36	17.02	17.29	17.58	17.64	17.82	18.12	18.39	18.56
54.0	14.47	14.44	15.07	15.38	15.60	15.64	15.75	16.01	16.20	16.41
57.0	12.77	12.76	13.31	13.56	13.77	13.79	13.86	14.07	14.19	14.39
60.0	9.653	9.667	11.05	11.34	11.78	12.13	12.20	12.45	12.63	12.85
63.0	7.394	7.375	7.840	7.987	8.336	8.661	8.923	9.531	10.09	10.42
66.0	6.008	5.994	6.393	6.493	6.759	6.959	7.072	7.317	7.521	7.696
69.0	4.946	4.935	5.215	5.273	5.494	5.668	5.767	5.983	6.199	6.324
72.0	3.994	3.981	4.255	4.313	4.500	4.660	4.725	4.909	5.081	5.157
75.0	3.050	3.053	3.320	3.384	3.552	3.707	3.776	3.957	4.117	4.189
78.0	2.127	2.132	2.415	2.478	2.632	2.780	2.847	3.019	3.173	3.253
81.0	1.131	1.151	1.487	1.564	1.715	1.837	1.903	2.082	2.233	2.316
84.0	0.3086	0.2844	0.4201	0.4777	0.5623	0.7112	0.7706	0.9606	1.211	1.364
87.0	0.0518	0.0255	0.0803	0.1244	0.1461	0.2076	0.2482	0.3038	0.3651	0.4516
90.0	0.0234	0.0234	0.0170	0.0170	0.0170	0.0170	0.0170	0.0426	0.0618	0.1044
G/C	300.0	315.0	330.0	345.0						
0.0	2857	2856	2839	2858						
3.0	2909	2966	3005	3018						
6.0	2348	2484	2604	2674						
9.0	1392	1509	1646	1671						
12.0	730.1	781.6	854.4	851.0						
15.0	464.3	489.6	518.3	518.4						
18.0	306.0	321.7	336.1	330.6						
21.0	203.5	213.9	222.3	215.6						

C Range: 0 - 360DEG
C Interval: 15.0DEG
Test Speed: HIGH
Temperature: 25.2DEG
Operators: Cao Chengpei
Test Date: 2017-01-07

γ Range: 0 - 90DEG
γ Interval: 1.0DEG
Test System: EVERFINE GO-2000B_V1 SYSTEM V2.0.288
Humidity: 52%
Test Distance: 5.850m [K=1.0000]
Remarks:

Photometric Data Table [cd]

24.0	137.0	143.1	149.2	145.6
27.0	91.77	96.31	100.1	98.82
30.0	65.60	68.27	70.44	70.36
33.0	49.09	50.68	51.97	52.03
36.0	39.45	40.36	41.30	41.37
39.0	32.37	33.03	33.97	34.01
42.0	27.65	27.97	28.52	28.62
45.0	24.45	24.59	24.86	24.94
48.0	21.51	21.65	21.88	21.95
51.0	18.85	18.97	19.18	19.31
54.0	16.63	16.78	17.01	17.08
57.0	14.73	14.80	15.02	15.07
60.0	13.08	12.99	13.15	13.23
63.0	10.96	11.07	11.25	11.48
66.0	7.951	8.091	8.329	8.403
69.0	6.503	6.573	6.686	6.739
72.0	5.296	5.378	5.479	5.502
75.0	4.317	4.400	4.483	4.504
78.0	3.373	3.460	3.537	3.562
81.0	2.448	2.542	2.621	2.638
84.0	1.525	1.628	1.696	1.720
87.0	0.5327	0.6222	0.6706	0.6956
90.0	0.1129	0.1619	0.1704	0.1875

C Range: 0 - 360DEG
 C Interval: 15.0DEG
 Test Speed: HIGH
 Temperature: 25.2DEG
 Operators: Cao Chengpei
 Test Date: 2017-01-07

γ Range: 0 - 90DEG
 γ Interval: 1.0DEG
 Test System: EVERFINE GO-2000B_V1 SYSTEM V2.0.288
 Humidity: 52%
 Test Distance: 5.850m [K=1.0000]
 Remarks: