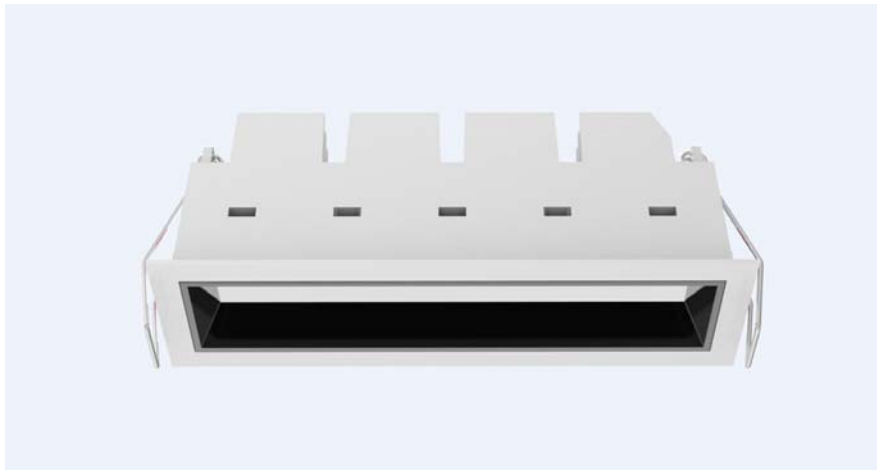


FG5-11W-940



Light Output Ratio:	100.0%	
Luminaire Power:	12.35 W	
SHR Nominal:	1.00	Calculated using the TM5
SHR Maximum:	1.05	fine grid method.

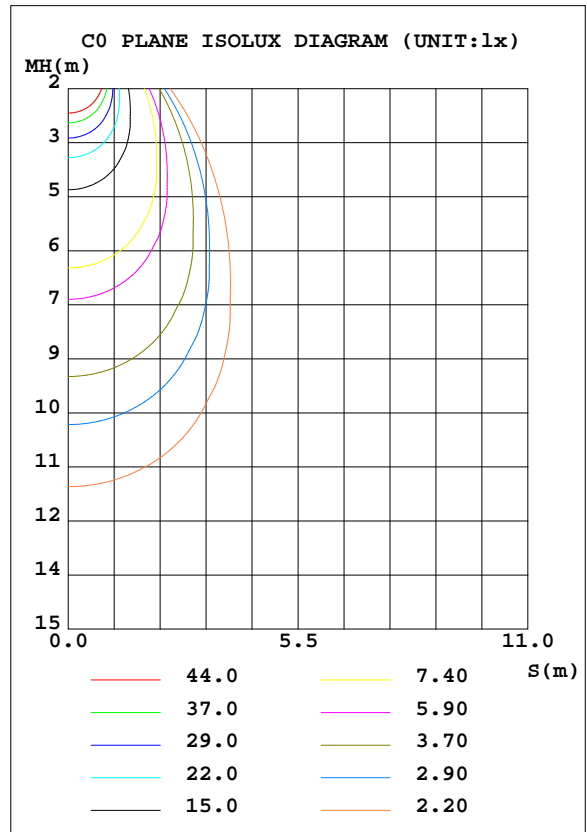
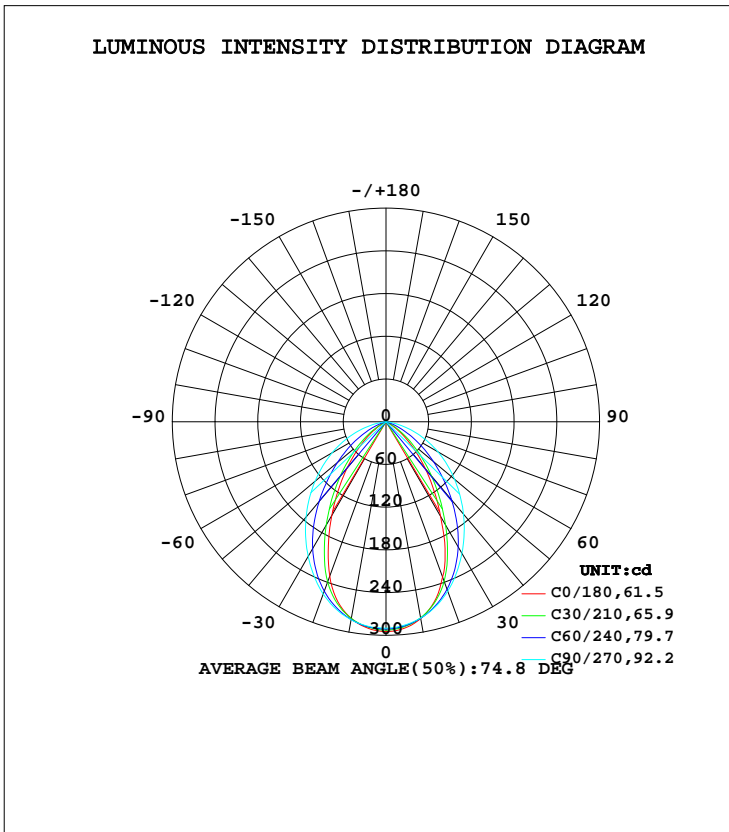
C Range: 0 - 360DEG
C Interval: 15.0DEG
Test Speed: HIGH
Temperature: 25.3DEG
Operators: Meng Yongjian
Test Date: 2017-05-15

γ Range: 0 - 90DEG
 γ Interval: 1.0DEG
Test System: EVERFINE GO-2000B_V1 SYSTEM V2.0.288
Humidity: 52%
Test Distance: 5.850m [K=1.0000]
Remarks:

LUMINAIRE PHOTOMETRIC TEST REPORT

Test:U:220.7V I:0.0583A P:12.35W PF:0.9601 Freq:50.00Hz Lamp Flux:446.354x1 lm		
NAME: FG5-11W-940	TYPE:Downlight	SERIAL No.:
SPEC.:4000K	DIM.: L153mm*W45mm*H60mm	
MFR.: NEKO LIGHTING AG		

DATA OF LAMP		PHOTOMETRIC DATA Eff: 36.13 lm/W			
MODEL	OSRAM-4000K	I _{max} (cd)	294.7	S/MH(C0/180)	0.92
NOMINAL POWER(W)	13.0	LOR(%)	100.0	S/MH(C90/270)	1.14
RATED VOLTAGE(V)	220	TOTAL FLUX(lm)	446.35	η UP, DN(C0-180)	0.0,49.5
NOMINAL FLUX(lm)	446.354	CIE CLASS	DIRECT	η UP, DN(C180-360)	0.0,50.5
LAMPS INSIDE	1	η up(%)	0.0	CIBSE SHR NOM	1.00
TEST VOLTAGE(V)	220	η down(%)	100.0	CIBSE SHR MAX	1.05



C Range: 0 - 360DEG
 C Interval: 15.0DEG
 Test Speed: HIGH
 Temperature:25.3DEG
 Operators:Meng Yongjian
 Test Date:2017-05-15

γ Range: 0 - 90DEG
 γ Interval: 1.0DEG
 Test System:EVERFINE GO-2000B_V1 SYSTEM V2.0.288
 Humidity:52%
 Test Distance:5.850m [K=1.0000]
 Remarks:

ZONAL FLUX DIAGRAM

ZONAL FLUX DIAGRAM:

γ	C0	C45	C90	C135	C180	C225	C270	C315	γ	Φ zone	Φ total	%lum, lamp
10	280.8	280.2	280.0	276.7	280.7	281.0	282.4	278.9	0- 10	27.21	27.21	6.1,6.1
20	232.4	246.0	253.4	242.9	231.1	246.6	257.6	246.8	10- 20	74.31	101.5	22.7,22.7
30	153.3	185.7	213.3	184.4	152.7	185.7	218.5	189.6	20- 30	99.08	200.6	44.9,44.9
40	85.94	118.2	169.4	118.5	85.37	118.7	174.5	123.1	30- 40	96.47	297.1	66.6,66.6
50	37.16	63.43	125.7	64.62	36.83	63.73	130.1	67.92	40- 50	75.83	372.9	83.5,83.5
60	5.437	23.44	84.03	24.51	5.158	23.28	87.52	26.53	50- 60	47.34	420.2	94.1,94.1
70	1.001	0.1770	43.68	0.1377	1.174	0.2691	46.52	0.2765	60- 70	20.33	440.6	98.7,98.7
80	0.8945	0.0959	9.192	0.0611	1.159	0.1579	10.87	0.1138	70- 80	5.453	446.0	99.9,99.9
90	0.1356	0.0241	0.0678	0.0241	0.3083	0.0153	0.0525	0.0219	80- 90	0.3293	446.4	100,100
100									90-100			
110									100-110			
120									110-120			
130									120-130			
140									130-140			
150									140-150			
160									150-160			
170									160-170			
180									170-180			
DEG	LUMINOUS INTENSITY:cd									UNIT:lm		

Conical surface Flux(90deg): 338.29 lm

%lum = 75.8%
%lamp = 75.8%

Conical surface Flux(120deg): 420.24 lm

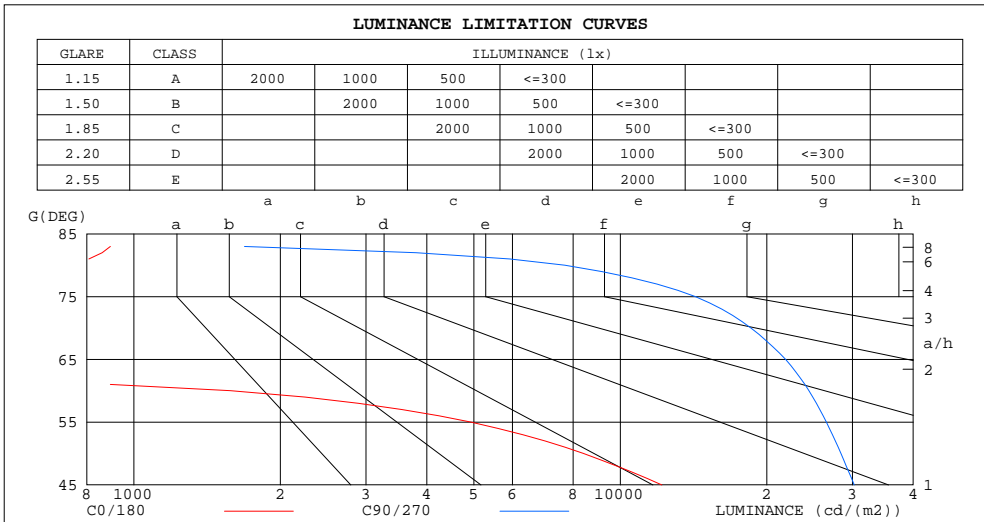
%lum = 94.1%
%lamp = 94.1%

C Range: 0 - 360DEG
C Interval: 15.0DEG
Test Speed: HIGH
Temperature:25.3DEG
Operators:Meng Yongjian
Test Date:2017-05-15

γ Range: 0 - 90DEG
γ Interval: 1.0DEG
Test System:EVERFINE GO-2000B_V1 SYSTEM V2.0.288
Humidity:52%
Test Distance:5.850m [K=1.0000]
Remarks:

LUMINANCE LIMITATION CURVES

Test:U:220.7V I:0.0583A P:12.35W PF:0.9601 Freq:50.00Hz Lamp Flux:446.354x1 lm		
NAME: FG5-11W-940	TYPE:Downlight	SERIAL No.:
SPEC.:4000K	DIM.: L153mm*W45mm*H60mm	
MFR.: NEKO LIGHTING AG		



LUMINANCE cd/(m2)		
G(DEG)	C0/180	C90/270
85	126	155
80	748	7688
75	551	14253
70	425	18547
65	313	21863
60	1579	24410
55	4924	26523
50	8396	28406
45	12167	30260

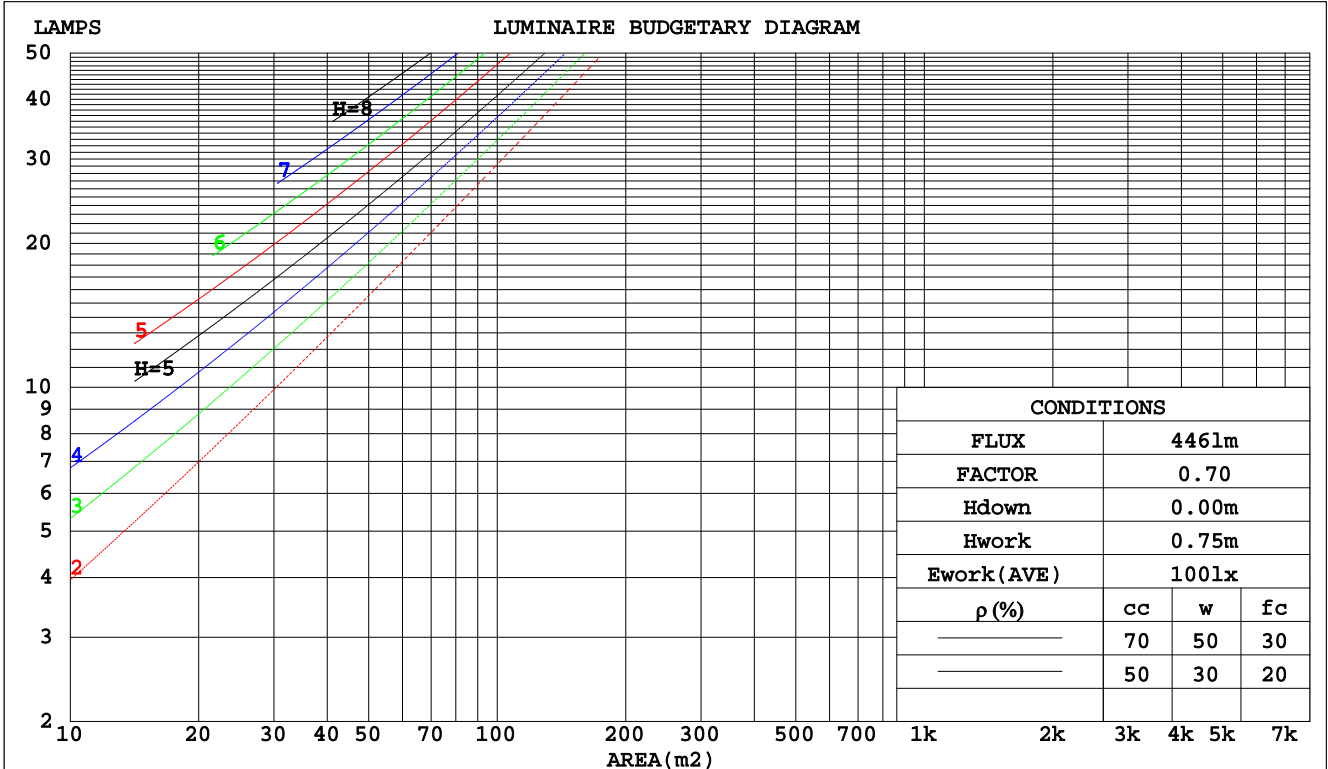
C Range: 0 - 360DEG
 C Interval: 15.0DEG
 Test Speed: HIGH
 Temperature:25.3DEG
 Operators:Meng Yongjian
 Test Date:2017-05-15

γ Range: 0 - 90DEG
 γ Interval: 1.0DEG
 Test System:EVERFINE GO-2000B_V1 SYSTEM V2.0.288
 Humidity:52%
 Test Distance:5.850m [K=1.0000]
 Remarks:

CU AND LUMINAIRE BUDGETARY ESTIMATE DIAGRAM

Test:U:220.7V I:0.0583A P:12.35W PF:0.9601 Freq:50.00Hz Lamp Flux:446.354x1 lm		
NAME: FG5-11W-940	TYPE:Downlight	SERIAL No.:
SPEC.:4000K	DIM.: L153mm*W45mm*H60mm	
MFR.: NEKO LIGHTING AG		

pcc	80%			70%			50%			30%			10%			0
	50%	30%	10%	50%	30%	10%	50%	30%	10%	50%	30%	10%	50%	30%	10%	0
pw																
pfc																
RCR	RCR:Room Cavity Ratio															
	Coefficients of Utilization(CU)															
0.0	1.19	1.19	1.19	1.16	1.16	1.16	1.11	1.11	1.11	1.06	1.06	1.06	1.02	1.02	1.02	1.00
1.0	1.08	1.05	1.02	1.06	1.03	1.01	1.02	.98	.98	.98	.96	.95	.95	.93	.92	.90
2.0	.98	.93	.88	.96	.91	.87	.93	.89	.85	.90	.86	.83	.87	.84	.82	.80
3.0	.89	.82	.77	.87	.81	.76	.84	.79	.75	.82	.77	.74	.79	.76	.73	.71
4.0	.81	.73	.68	.79	.73	.68	.77	.71	.67	.75	.70	.66	.73	.69	.65	.63
5.0	.74	.66	.61	.72	.66	.60	.71	.64	.60	.69	.63	.59	.67	.62	.59	.57
6.0	.67	.60	.54	.67	.59	.54	.65	.59	.54	.63	.58	.53	.62	.57	.53	.51
7.0	.62	.55	.49	.61	.54	.49	.60	.54	.49	.59	.53	.49	.57	.52	.48	.47
8.0	.57	.50	.45	.57	.50	.45	.56	.49	.45	.54	.49	.44	.53	.48	.44	.43
9.0	.53	.46	.41	.53	.46	.41	.52	.45	.41	.51	.45	.41	.50	.45	.41	.39
10.0	.50	.43	.38	.49	.42	.38	.48	.42	.38	.47	.42	.38	.47	.41	.38	.36



C Range: 0 - 360DEG
 C Interval: 15.0DEG
 Test Speed: HIGH
 Temperature: 25.3DEG
 Operators: Meng Yongjian
 Test Date: 2017-05-15

γ Range: 0 - 90DEG
 γ Interval: 1.0DEG
 Test System: EVERFINE GO-2000B_V1 SYSTEM V2.0.288
 Humidity: 52%
 Test Distance: 5.850m [K=1.0000]
 Remarks:

WEC AND CCEC

Test:U:220.7V I:0.0583A P:12.35W PF:0.9601 Freq:50.00Hz Lamp Flux:446.354x1 lm		
NAME: FG5-11W-940	TYPE:Downlight	SERIAL No.:
SPEC.:4000K	DIM.: L153mm*W45mm*H60mm	
MFR.: NEKO LIGHTING AG		

ρcc	80%			70%			50%			30%			10%			0
ρw	50%	30%	10%	50%	30%	10%	50%	30%	10%	50%	30%	10%	50%	30%	10%	0
ρfc	20%			20%			20%			20%			20%			0
RCR	RCR:Room Cavity Ratio						Wall Exitance Coefficients(WEC)									
0.0																
1.0	.226	.129	.041	.219	.125	.040	.206	.118	.038	.195	.112	.036	.184	.106	.034	
2.0	.221	.121	.037	.215	.118	.036	.204	.113	.035	.194	.109	.034	.184	.104	.033	
3.0	.211	.112	.034	.206	.110	.033	.196	.106	.032	.187	.103	.031	.179	.099	.031	
4.0	.200	.104	.031	.195	.102	.030	.187	.099	.030	.179	.096	.029	.172	.093	.028	
5.0	.189	.096	.028	.185	.095	.028	.177	.092	.027	.170	.090	.027	.164	.088	.026	
6.0	.178	.089	.026	.175	.088	.025	.168	.086	.025	.162	.084	.025	.156	.082	.024	
7.0	.169	.083	.024	.166	.083	.024	.160	.081	.023	.154	.079	.023	.149	.077	.023	
8.0	.160	.078	.022	.157	.077	.022	.152	.076	.022	.147	.074	.021	.142	.073	.021	
9.0	.151	.073	.020	.149	.073	.020	.144	.071	.020	.140	.070	.020	.135	.069	.020	
10.0	.144	.069	.019	.142	.068	.019	.137	.067	.019	.133	.066	.019	.129	.065	.019	

ρcc	80%			70%			50%			30%			10%			0
ρw	50%	30%	10%	50%	30%	10%	50%	30%	10%	50%	30%	10%	50%	30%	10%	0
ρfc	20%			20%			20%			20%			20%			0
RCR	RCR:Room Cavity Ratio						Ceiling Cavity Exitance Coefficients(CCEC)									
0.0	.190	.190	.190	.163	.163	.163	.111	.111	.111	.064	.064	.064	.020	.020	.020	
1.0	.175	.157	.141	.149	.135	.121	.102	.093	.084	.059	.054	.049	.019	.017	.016	
2.0	.163	.132	.107	.139	.114	.092	.096	.079	.064	.055	.046	.038	.018	.015	.012	
3.0	.153	.114	.083	.131	.098	.072	.090	.068	.050	.052	.040	.030	.017	.013	.010	
4.0	.145	.100	.066	.124	.086	.057	.085	.060	.040	.049	.035	.024	.016	.011	.008	
5.0	.137	.089	.053	.118	.077	.046	.081	.054	.033	.047	.032	.019	.015	.010	.006	
6.0	.130	.080	.044	.112	.069	.038	.077	.049	.027	.045	.029	.016	.014	.009	.005	
7.0	.124	.073	.037	.107	.063	.033	.074	.044	.023	.043	.026	.014	.014	.009	.005	
8.0	.118	.067	.032	.102	.058	.028	.070	.041	.020	.041	.024	.012	.013	.008	.004	
9.0	.113	.062	.028	.097	.054	.024	.067	.038	.017	.039	.022	.010	.013	.007	.003	
10.0	.108	.058	.025	.093	.050	.021	.065	.035	.015	.038	.021	.009	.012	.007	.003	

C Range: 0 - 360DEG
 C Interval: 15.0DEG
 Test Speed: HIGH
 Temperature:25.3DEG
 Operators:Meng Yongjian
 Test Date:2017-05-15

γ Range: 0 - 90DEG
 γ Interval: 1.0DEG
 Test System:EVERFINE GO-2000B_V1 SYSTEM V2.0.288
 Humidity:52%
 Test Distance:5.850m [K=1.0000]
 Remarks:

UGR(Unified Glare Rating) Table

Test:U:220.7V I:0.0583A P:12.35W PF:0.9601 Freq:50.00Hz Lamp Flux:446.354x1 lm		
NAME: FG5-11W-940	TYPE:Downlight	SERIAL No.:
SPEC.:4000K	DIM.: L153mm*W45mm*H60mm	
MFR.: NEKO LIGHTING AG		

ceiling/cavity	0.7	0.7	0.5	0.5	0.3	0.7	0.7	0.5	0.5	0.3
walls	0.5	0.3	0.5	0.3	0.3	0.5	0.3	0.5	0.3	0.3
working plane	0.2	0.2	0.2	0.2	0.2	0.2	0.2	0.2	0.2	0.2
Room dimensions	Viewed crosswise					Viewed endwise				
x = 2H y = 2H	20.2	21.4	20.5	21.6	21.8	26.5	27.7	26.7	27.9	28.1
3H	20.0	21.1	20.3	21.4	21.6	27.5	28.6	27.7	28.8	29.0
4H	19.9	21.0	20.2	21.2	21.5	27.7	28.8	28.0	29.0	29.3
6H	19.8	20.8	20.1	21.1	21.4	27.8	28.8	28.1	29.0	29.3
8H	19.8	20.8	20.1	21.0	21.3	27.7	28.7	28.1	29.0	29.2
12H	19.7	20.7	20.1	20.9	21.2	27.7	28.6	28.0	28.9	29.2
4H 2H	20.6	21.6	20.9	21.9	22.1	26.3	27.4	26.6	27.6	27.8
3H	20.4	21.3	20.7	21.6	21.9	27.3	28.2	27.6	28.5	28.8
4H	20.3	21.1	20.7	21.4	21.8	27.5	28.4	27.9	28.7	29.0
6H	20.2	20.9	20.6	21.3	21.6	27.6	28.3	28.0	28.7	29.0
8H	20.2	20.9	20.6	21.2	21.6	27.6	28.3	28.0	28.6	29.0
12H	20.1	20.7	20.5	21.1	21.5	27.5	28.1	27.9	28.5	28.9
8H 4H	20.2	20.9	20.6	21.3	21.6	27.4	28.1	27.8	28.4	28.8
6H	20.1	20.7	20.6	21.1	21.5	27.5	28.0	27.9	28.4	28.8
8H	20.1	20.6	20.6	21.0	21.5	27.4	27.9	27.9	28.3	28.8
12H	20.1	20.5	20.5	20.9	21.4	27.4	27.8	27.9	28.3	28.7
12H 4H	20.2	20.8	20.6	21.2	21.6	27.4	28.0	27.8	28.3	28.7
6H	20.1	20.6	20.6	21.0	21.5	27.4	27.9	27.9	28.3	28.8
8H	20.1	20.5	20.5	20.9	21.4	27.4	27.8	27.9	28.3	28.7
Variations with the observer position at spacings:										
S = 1.0H	+ 2.0 / - 5.1					+ 0.4 / - 0.4				
1.5H	+ 1.4 / - 2.2					+ 0.9 / - 1.6				
2.0H	+ 3.3 / -11.3					+ 2.1 / - 4.0				

CIE Pub.117, 446.4 lm Total Lamp Luminous Flux Correct (8log(F/F0) = -2.8)

C Range: 0 - 360DEG
 C Interval: 15.0DEG
 Test Speed: HIGH
 Temperature:25.3DEG
 Operators:Meng Yongjian
 Test Date:2017-05-15

γ Range: 0 - 90DEG
 γ Interval: 1.0DEG
 Test System:EVERFINE GO-2000B_V1 SYSTEM V2.0.288
 Humidity:52%
 Test Distance:5.850m [K=1.0000]
 Remarks:

UTILIZATION FACTORS TABLE

Test:U:220.7V I:0.0583A P:12.35W PF:0.9601 Freq:50.00Hz Lamp Flux:446.354x1 lm		
NAME: FG5-11W-940	TYPE:Downlight	SERIAL No.:
SPEC.:4000K	DIM.: L153mm*W45mm*H60mm	
MFR.: NEKO LIGHTING AG		

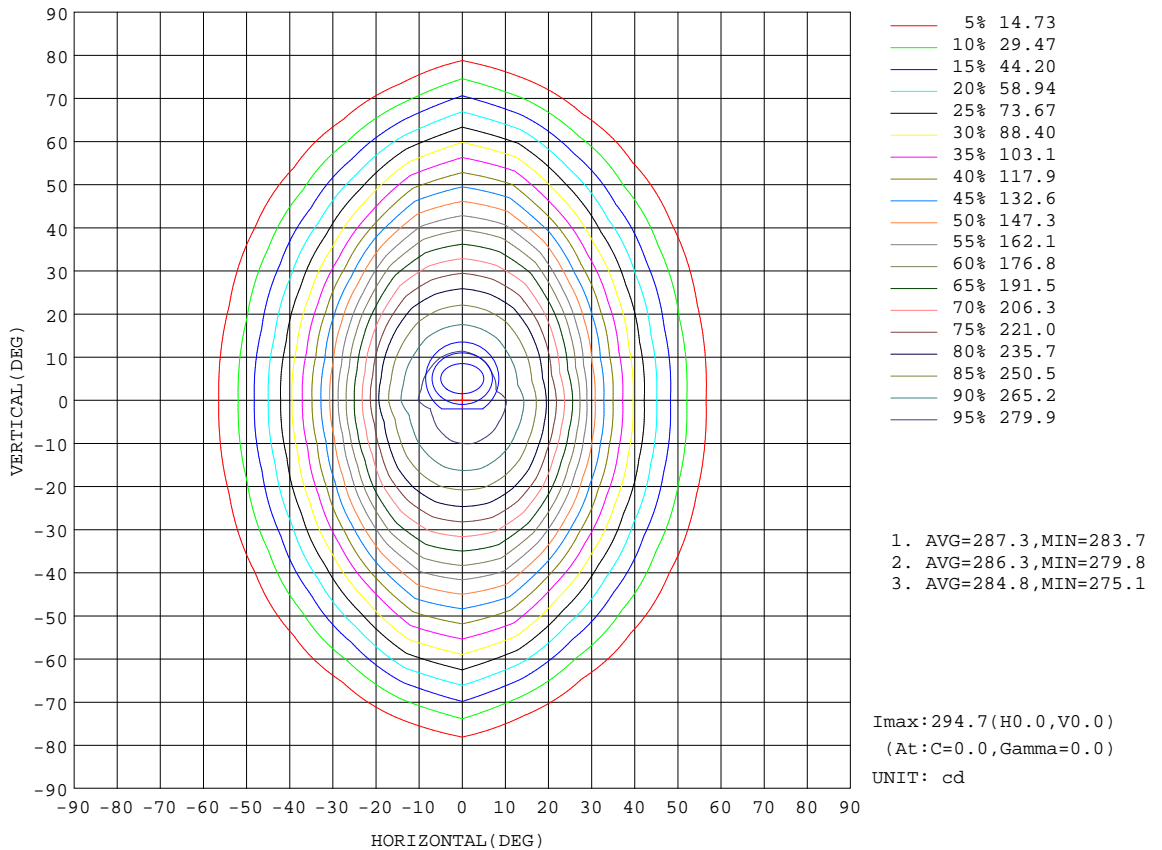
REFLECTANCE										
Ceiling	0.8	0.8	0.8	0.7	0.7	0.7	0.5	0.5	0.5	0
Walls	0.7	0.5	0.3	0.7	0.5	0.3	0.7	0.5	0.3	0
Working plane	0.2	0.2	0.2	0.2	0.2	0.2	0.2	0.2	0.2	0
ROOM INDEX	UTILIZATION FACTORS(PERCENT) $k(RI) \times RCR = 5$									
k = 0.60	70	61	55	70	61	55	69	60	55	50
0.80	80	71	65	79	71	65	78	70	65	59
1.00	87	79	74	86	79	73	85	79	73	67
1.25	94	86	81	92	85	80	90	84	79	74
1.50	98	90	85	96	90	85	94	88	84	78
2.00	103	97	92	101	96	91	98	93	90	83
2.50	105	100	96	104	99	95	100	96	93	86
3.00	108	103	99	106	101	98	102	99	96	88
4.00	111	107	103	108	105	102	104	102	99	91
5.00	112	109	106	110	107	104	106	103	101	93
ROOM INDEX	UF(total)									Direct
According to DIN EN 13032-2 2004			Suspended				SHRNOM = 1.25			

C Range: 0 - 360DEG
 C Interval: 15.0DEG
 Test Speed: HIGH
 Temperature:25.3DEG
 Operators:Meng Yongjian
 Test Date:2017-05-15

γ Range: 0 - 90DEG
 γ Interval: 1.0DEG
 Test System:EVERFINE GO-2000B_V1 SYSTEM V2.0.288
 Humidity:52%
 Test Distance:5.850m [K=1.0000]
 Remarks:

ISOCANDELA DIAGRAM

Test:U:220.7V I:0.0583A P:12.35W PF:0.9601 Freq:50.00Hz Lamp Flux:446.354x1 lm		
NAME: FG5-11W-940	TYPE:Downlight	SERIAL No.:
SPEC.:4000K	DIM.: L153mm*W45mm*H60mm	
MFR.: NEKO LIGHTING AG		



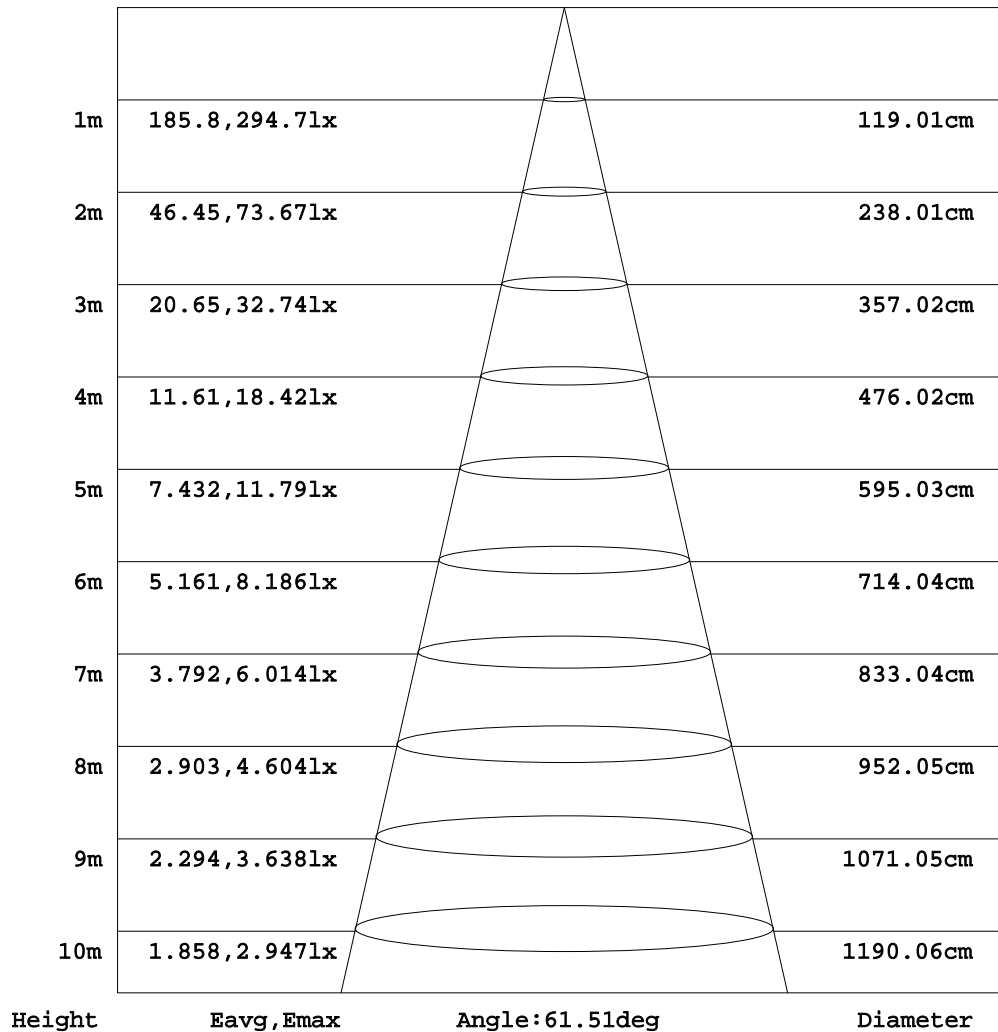
C Range: 0 - 360DEG
C Interval: 15.0DEG
Test Speed: HIGH
Temperature: 25.3DEG
Operators: Meng Yongjian
Test Date: 2017-05-15

γ Range: 0 - 90DEG
γ Interval: 1.0DEG
Test System: EVERFINE GO-2000B_V1 SYSTEM V2.0.288
Humidity: 52%
Test Distance: 5.850m [K=1.0000]
Remarks:

AAI Figure

Test:U:220.7V I:0.0583A P:12.35W PF:0.9601 Freq:50.00Hz Lamp Flux:446.354x1 lm		
NAME: FG5-11W-940	TYPE:Downlight	SERIAL No.:
SPEC.:4000K	DIM.: L153mm*W45mm*H60mm	
MFR.: NEKO LIGHTING AG		

Flux out:210.7 lm



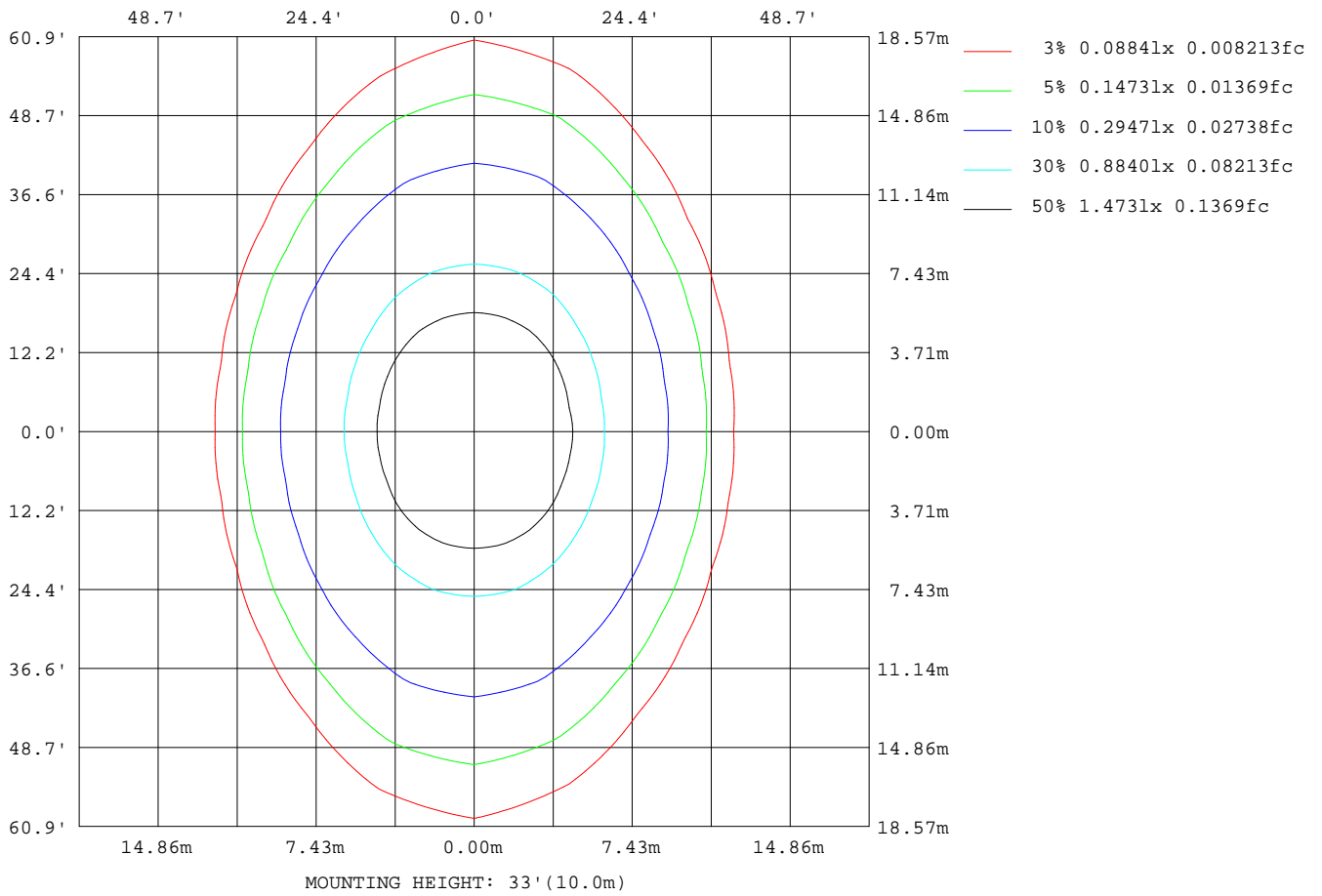
Note:The Curves indicate the illuminated area and the average illumination when the luminaire is at different distance.

C Range: 0 - 360DEG
C Interval: 15.0DEG
Test Speed: HIGH
Temperature:25.3DEG
Operators:Meng Yongjian
Test Date:2017-05-15

γ Range: 0 - 90DEG
γ Interval: 1.0DEG
Test System:EVERFINE GO-2000B_V1 SYSTEM V2.0.288
Humidity:52%
Test Distance:5.850m [K=1.0000]
Remarks:

ISOLUX DIAGRAM

Test:U:220.7V I:0.0583A P:12.35W PF:0.9601 Freq:50.00Hz Lamp Flux:446.354x1 lm		
NAME: FG5-11W-940	TYPE:Downlight	SERIAL No.:
SPEC.:4000K	DIM.: L153mm*W45mm*H60mm	
MFR.: NEKO LIGHTING AG		



C Range: 0 - 360DEG
 C Interval: 15.0DEG
 Test Speed: HIGH
 Temperature:25.3DEG
 Operators:Meng Yongjian
 Test Date:2017-05-15

γ Range: 0 - 90DEG
 γ Interval: 1.0DEG
 Test System:EVERFINE GO-2000B_V1 SYSTEM V2.0.288
 Humidity:52%
 Test Distance:5.850m [K=1.0000]
 Remarks:

LED Avg.L Report

Test:U:220.7V I:0.0583A P:12.35W PF:0.9601 Freq:50.00Hz Lamp Flux:446.354x1 lm		
NAME: FG5-11W-940	TYPE:Downlight	SERIAL No.:
SPEC.:4000K	DIM.: L153mm*W45mm*H60mm	
MFR.: NEKO LIGHTING AG		

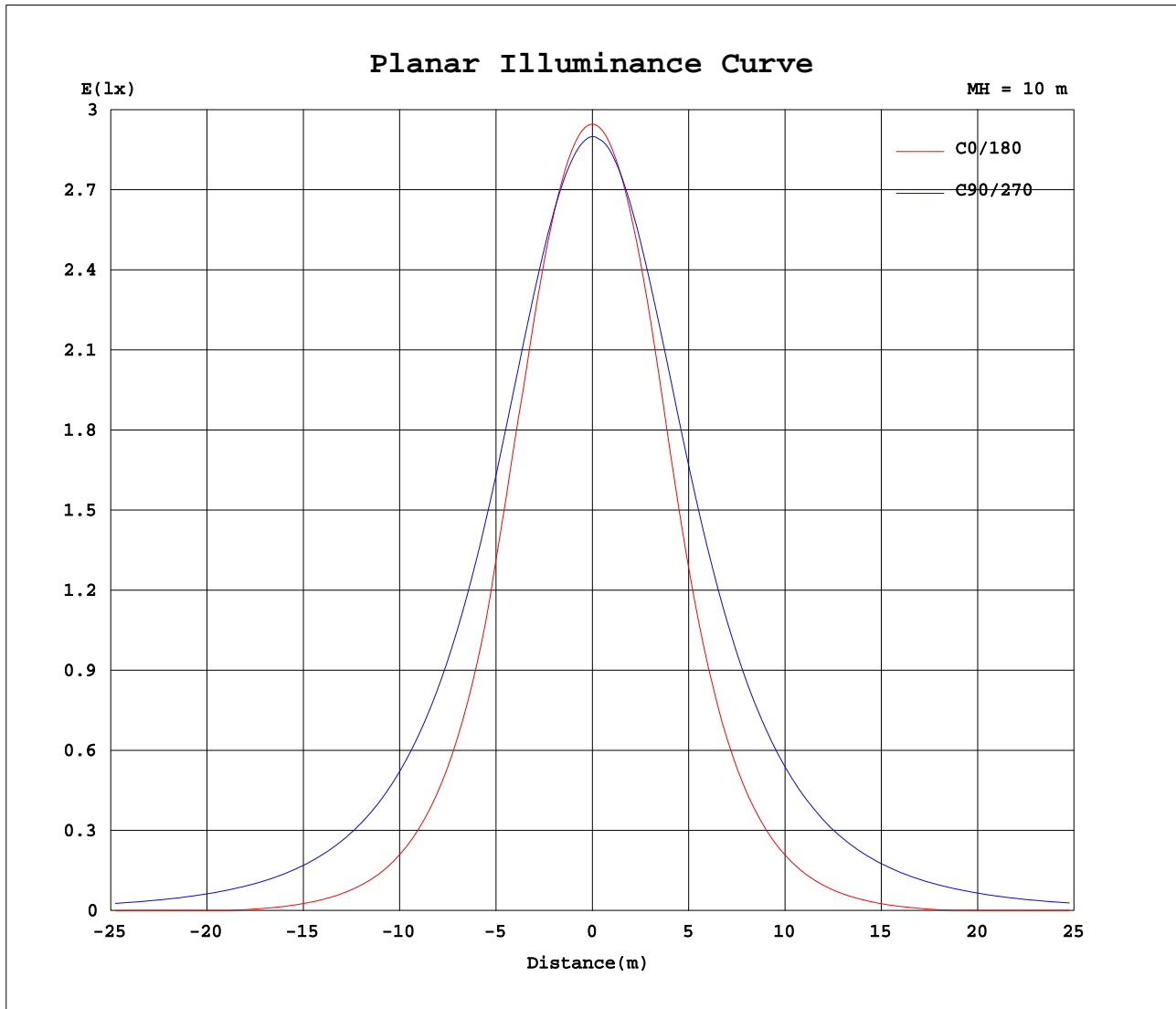
AvgL	cd/m2
L_0~180(65)av	365
L_0~180(75)av	602
L_0~180(85)av	85
L_90~270(65)av	22396
L_90~270(75)av	14943
L_90~270(85)av	161
L_45(65)av	3382
L_45(75)av	92
L_45(85)av	54

Standard: GB/T 29293-2012

C Range: 0 - 360DEG
C Interval: 15.0DEG
Test Speed: HIGH
Temperature:25.3DEG
Operators:Meng Yongjian
Test Date:2017-05-15

γ Range: 0 - 90DEG
 γ Interval: 1.0DEG
Test System:EVERFINE GO-2000B_V1 SYSTEM V2.0.288
Humidity:52%
Test Distance:5.850m [K=1.0000]
Remarks:

Planar Illuminance Curve



C Range: 0 - 360DEG
 C Interval: 15.0DEG
 Test Speed: HIGH
 Temperature: 25.3DEG
 Operators: Meng Yongjian
 Test Date: 2017-05-15

γ Range: 0 - 90DEG
 γ Interval: 1.0DEG
 Test System: EVERFINE GO-2000B_V1 SYSTEM V2.0.288
 Humidity: 52%
 Test Distance: 5.850m [K=1.0000]
 Remarks:

LUMINOUS DISTRIBUTION INTENSITY DATA

Test:U:220.7V I:0.0583A P:12.35W PF:0.9601 Freq:50.00Hz Lamp Flux:446.354x1 lm		
NAME: FG5-11W-940	TYPE:Downlight	SERIAL No.:
SPEC.:4000K	DIM.: L153mm*W45mm*H60mm	
MFR.: NEKO LIGHTING AG		

Table--1

UNIT: cd

C(DEC) γ (DEC)	0	15	30	45	60	75	90	105	120	135	150	165	180	195	210	225	240	255	270
0	295	294	293	292	291	291	290	290	289	289	289	288	295	294	293	292	291	291	290
5	291	290	289	289	288	288	287	287	286	285	285	285	291	290	290	289	289	289	289
10	281	280	280	280	280	281	280	280	278	277	275	274	281	279	281	281	282	282	282
15	262	262	263	266	268	269	269	268	265	263	259	256	262	261	264	267	270	271	272
20	232	234	239	246	251	253	253	252	248	243	234	228	231	232	240	247	253	256	258
25	196	197	205	219	229	234	234	233	227	217	201	193	192	194	205	219	232	237	239
30	153	157	168	186	203	212	213	211	202	184	165	153	153	155	168	186	206	215	219
35	117	121	132	151	174	189	191	189	174	151	130	118	117	120	133	151	177	192	197
40	85.9	89.3	99.7	118	143	165	169	165	145	119	98.6	86.9	85.4	88.3	100	119	146	168	175
45	59.2	62.2	71.3	89.2	114	141	147	142	116	90.0	70.8	60.5	58.8	61.4	71.9	89.5	116	143	152
50	37.2	39.7	47.4	63.4	86.9	116	126	118	89.4	64.6	47.1	38.5	36.8	38.9	47.9	63.7	88.9	119	130
55	19.4	21.6	27.9	41.5	62.9	91.8	105	94.8	65.5	42.7	27.8	20.7	19.2	20.8	28.3	41.5	64.6	93.8	109
60	5.44	7.10	12.4	23.4	41.3	68.3	84.0	71.9	43.8	24.5	12.3	6.45	5.16	6.33	12.5	23.3	42.8	69.9	87.5
65	0.91	0.51	0.40	9.06	23.1	46.0	63.6	49.4	25.2	9.94	0.46	0.62	1.21	0.70	0.43	8.80	24.2	47.2	66.7
70	1.00	0.59	0.34	0.18	8.94	26.6	43.7	29.4	10.4	0.14	0.36	0.59	1.17	0.65	0.38	0.27	9.59	27.5	46.5
75	0.98	0.63	0.24	0.15	0.15	11.1	25.4	13.1	0.24	0.10	0.16	0.61	1.16	0.66	0.33	0.24	0.13	11.7	27.9
80	0.89	0.53	0.21	0.10	0.08	1.47	9.19	2.39	0.08	0.06	0.09	0.32	1.16	0.47	0.19	0.16	0.05	1.69	10.9
85	0.08	0.06	0.06	0.03	0.05	0.05	0.09	0.06	0.05	0.03	0.04	0.03	0.03	0.04	0.03	0.03	0.03	0.06	0.10
90	0.14	0.15	0.03	0.02	0.04	0.05	0.07	0.06	0.04	0.02	0.03	0.24	0.31	0.27	0.03	0.02	0.02	0.05	0.05

C Range: 0 - 360DEG
C Interval: 15.0DEG
Test Speed: HIGH
Temperature:25.3DEG
Operators:Meng Yongjian
Test Date:2017-05-15

γ Range: 0 - 90DEG
γ Interval: 1.0DEG
Test System:EVERFINE GO-2000B_V1 SYSTEM V2.0.288
Humidity:52%
Test Distance:5.850m [K=1.0000]
Remarks:

LUMINOUS DISTRIBUTION INTENSITY DATA

Test:U:220.7V I:0.0583A P:12.35W PF:0.9601 Freq:50.00Hz Lamp Flux:446.354x1 lm		
NAME: FG5-11W-940	TYPE:Downlight	SERIAL No.:
SPEC.:4000K	DIM.: L153mm*W45mm*H60mm	
MFR.: NEKO LIGHTING AG		

Table--2

UNIT: cd

C(DEG) γ (DEG)	285	300	315	330	345													
0	290	289	289	289	288													
5	288	287	287	286	285													
10	282	281	279	278	276													
15	271	269	266	262	259													
20	256	253	247	239	231													
25	237	233	221	207	194													
30	216	208	190	171	156													
35	193	181	156	136	121													
40	170	152	123	103	89.8													
45	146	122	94.0	74.7	62.8													
50	123	94.3	67.9	50.5	40.4													
55	99.0	69.8	45.2	30.6	22.2													
60	75.5	47.6	26.5	14.6	7.72													
65	52.6	28.3	11.6	1.96	0.40													
70	31.7	12.7	0.28	0.30	0.52													
75	14.8	1.70	0.16	0.22	0.55													
80	3.23	0.06	0.11	0.20	0.48													
85	0.07	0.03	0.04	0.04	0.07													
90	0.05	0.03	0.02	0.02	0.14													

C Range: 0 - 360DEG
 C Interval: 15.0DEG
 Test Speed: HIGH
 Temperature: 25.3DEG
 Operators: Meng Yongjian
 Test Date: 2017-05-15

γ Range: 0 - 90DEG
 γ Interval: 1.0DEG
 Test System: EVERFINE GO-2000B_V1 SYSTEM V2.0.288
 Humidity: 52%
 Test Distance: 5.850m [K=1.0000]
 Remarks: