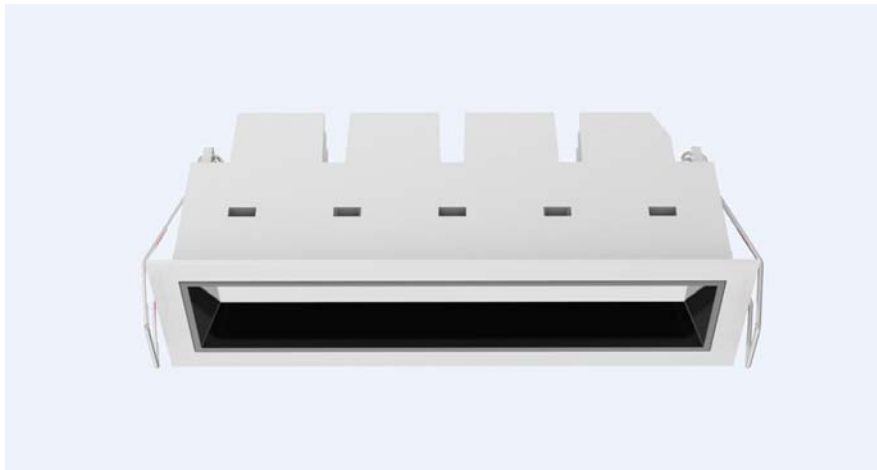


LED Downlight FUSION Series FG5-11W-840



Light Output Ratio:	100.0%	
Luminaire Power:	12.81 W	
SHR Nominal:	1.00	Calculated using the TM5
SHR Maximum:	1.05	fine grid method.

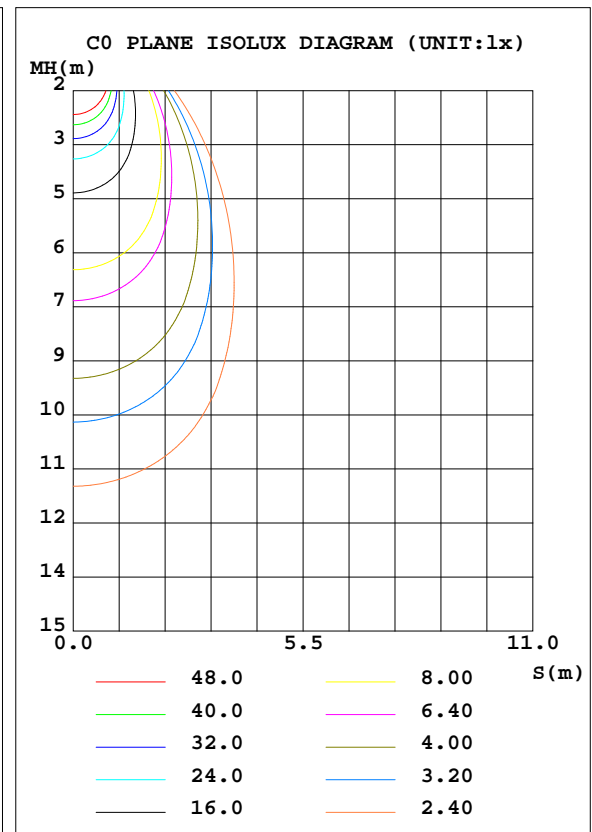
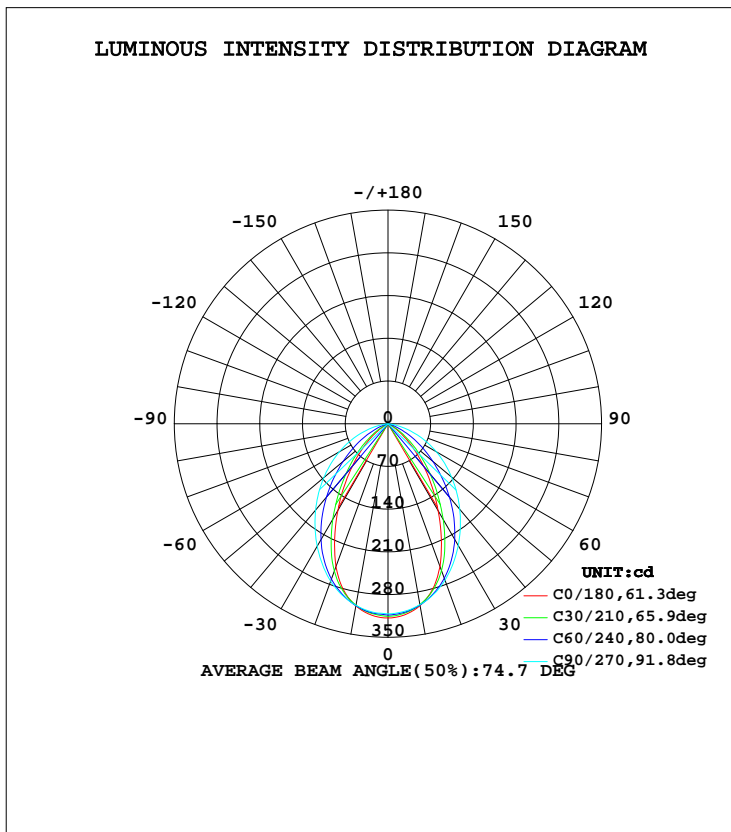
C Range: 0 - 360DEG
C Interval: 15.0DEG
Test Speed: HIGH
Temperature: 25.3DEG
Operators: Meng Yongjian
Test Date: 2017-06-13

γ Range: 0 - 90DEG
 γ Interval: 1.0DEG
Test System: EVERFINE GO-2000B_V1 SYSTEM V2.0.288
Humidity: 52%
Test Distance: 5.850m [K=1.0000]
Remarks:

LUMINAIRE PHOTOMETRIC TEST REPORT

Test:U:220.7V I:0.0645A P:12.81W PF:0.9005 Lamp Flux:476.625x1 lm		
NAME: FG5-11W-840	TYPE:Downlight	SERIAL No.:
SPEC.:4000K	DIM.: L153mm*W45mm*H60mm	
MFR.: NEKO LIGHTING AG		

DATA OF LAMP		PHOTOMETRIC DATA Eff: 37.20 lm/W			
MODEL	CREE-4000K	I _{max} (cd)	318.2	S/MH(C0/180)	0.92
NOMINAL POWER(W)	13.0	LOR(%)	100.0	S/MH(C90/270)	1.13
RATED VOLTAGE(V)	220	TOTAL FLUX(lm)	476.63	η UP, DN(C0-180)	0.0, 49.8
NOMINAL FLUX(lm)	476.625	CIE CLASS	DIRECT	η UP, DN(C180-360)	0.0, 50.2
LAMPS INSIDE	1	η up(%)	0.0	CIBSE SHR NOM	1.00
TEST VOLTAGE(V)	220	η down(%)	100.0	CIBSE SHR MAX	1.05



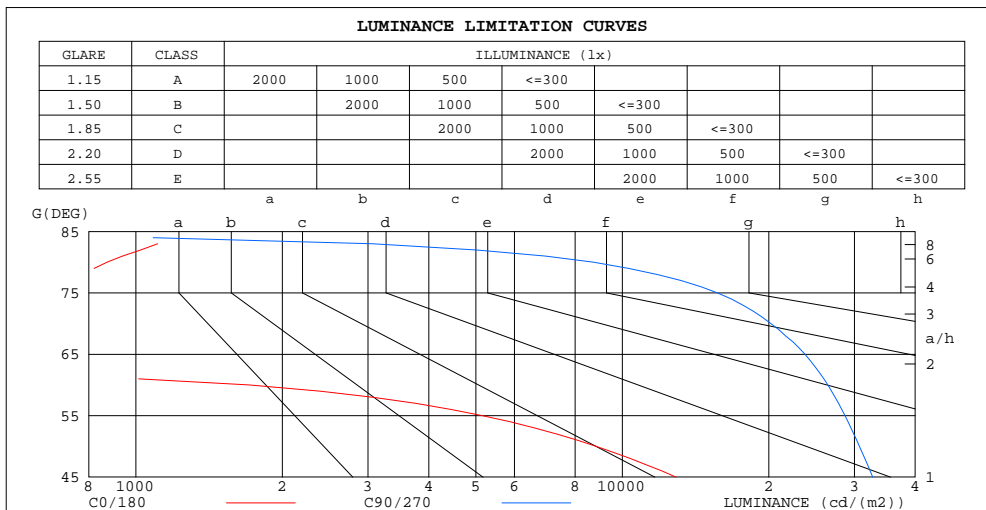
C Range: 0 - 360DEG
 C Interval: 15.0DEG
 Test Speed: HIGH
 Temperature: 25.3DEG
 Operators: Meng Yongjian
 Test Date: 2017-06-13

γ Range: 0 - 90DEG
 γ Interval: 1.0DEG
 Test System: EVERFINE GO-2000B_V1 SYSTEM V2.0.288
 Humidity: 52%
 Test Distance: 5.850m [K=1.0000]
 Remarks:

**ZONAL FLUX DIAGRAM
AND LUMINANCE LIMITATION CURVES**

ZONAL FLUX DIAGRAM:

γ	C0	C45	C90	C135	C180	C225	C270	C315	γ	Φ zone	Φ total	Φ lum,lamp
10	302.5	301.7	301.2	296.8	303.1	302.1	302.3	297.7	0- 10	29.23	29.23	6.13,6.13
20	249.1	264.5	273.0	259.7	249.3	264.2	274.5	261.4	10- 20	79.61	108.8	22.8,22.8
30	164.5	201.0	230.3	196.3	164.3	199.4	231.9	199.2	20- 30	105.9	214.7	45,45
40	91.66	129.1	182.9	125.8	91.27	127.6	184.6	128.6	30- 40	103.0	317.7	66.7,66.7
50	39.13	69.56	136.0	67.60	39.08	68.64	137.5	70.02	40- 50	80.72	398.4	83.6,83.6
60	5.888	25.94	91.08	25.04	5.107	25.33	92.16	26.62	50- 60	50.31	448.7	94.1,94.1
70	1.305	0.2404	47.59	0.2054	0.6298	0.2205	48.87	0.2683	60- 70	21.70	470.4	98.7,98.7
80	1.043	0.1331	10.43	0.0873	0.7389	0.1073	11.60	0.1444	70- 80	5.840	476.3	99.9,99.9
90	0.2012	0.0306	0.0765	0.0284	0.1705	0.0175	0.0656	0.0241	80- 90	0.3667	476.6	100,100
100									90-100			
110									100-110			
120									110-120			
130									120-130			
140									130-140			
150									140-150			
160									150-160			
170									160-170			
180									170-180			
DEG	LUMINOUS INTENSITY:cd									UNIT:lm		



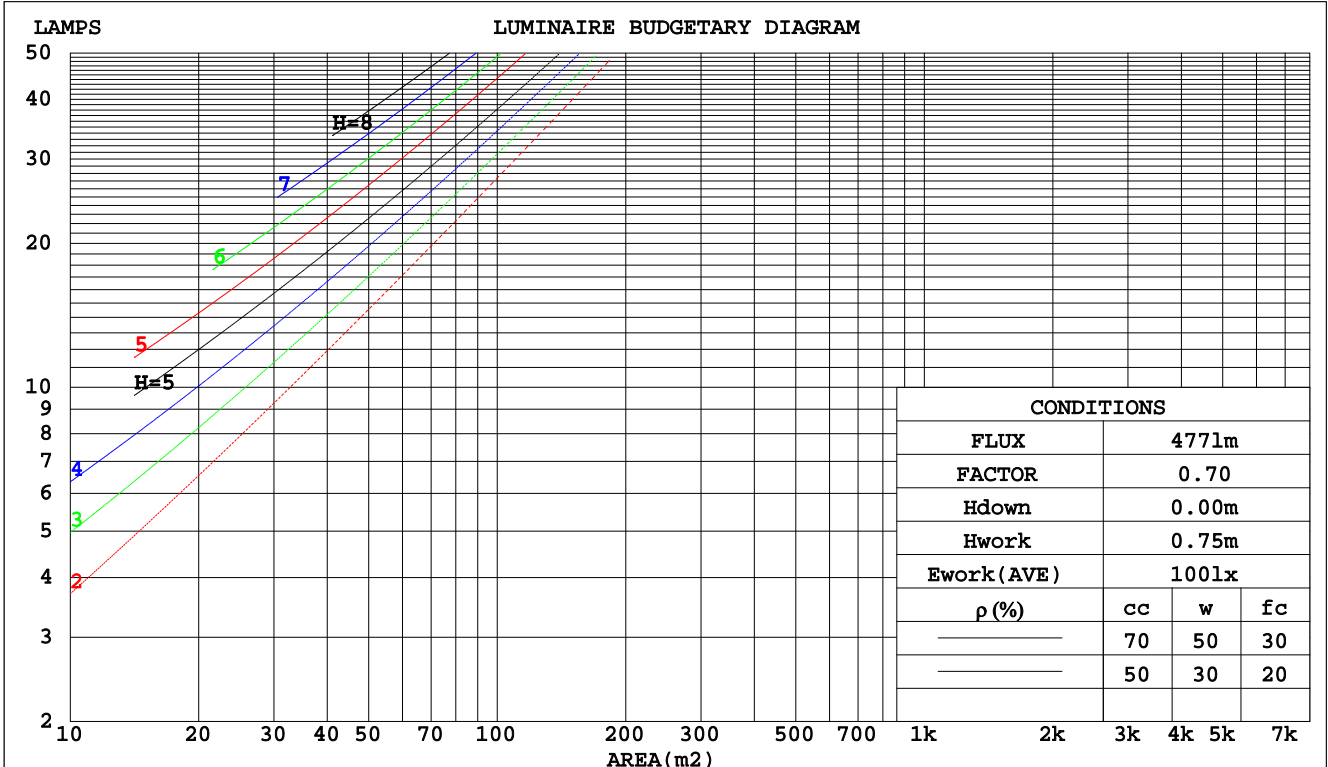
C Range: 0 - 360DEG
C Interval: 15.0DEG
Test Speed: HIGH
Temperature:25.3DEG
Operators:Meng Yongjian
Test Date:2017-06-13

γ Range: 0 - 90DEG
 γ Interval: 1.0DEG
Test System:EVERFINE GO-2000B_V1 SYSTEM V2.0.288
Humidity:52%
Test Distance:5.850m [K=1.0000]
Remarks:

CU AND LUMINAIRE BUDGETARY ESTIMATE DIAGRAM

Test:U:220.7V I:0.0645A P:12.81W PF:0.9005 Lamp Flux:476.625x1 lm		
NAME: FG5-11W-840	TYPE:Downlight	SERIAL No.:
SPEC.:4000K	DIM.: L153mm*W45mm*H60mm	
MFR.: NEKO LIGHTING AG		

pcc	80%			70%			50%			30%			10%			0
	50%	30%	10%	50%	30%	10%	50%	30%	10%	50%	30%	10%	50%	30%	10%	0
pw																
pfc																
RCR	RCR:Room Cavity Ratio															
	Coefficients of Utilization(CU)															
0.0	1.19	1.19	1.19	1.16	1.16	1.16	1.11	1.11	1.11	1.06	1.06	1.06	1.02	1.02	1.02	.00
1.0	1.08	1.05	1.02	1.06	1.03	1.01	1.02	.90	.98	.98	.96	.95	.95	.93	.92	.90
2.0	.98	.93	.88	.96	.91	.87	.93	.89	.85	.90	.86	.83	.87	.84	.82	.80
3.0	.89	.82	.77	.87	.81	.76	.84	.79	.75	.82	.78	.74	.79	.76	.73	.71
4.0	.81	.73	.68	.79	.73	.68	.77	.71	.67	.75	.70	.66	.73	.69	.65	.63
5.0	.74	.66	.61	.73	.66	.60	.71	.64	.60	.69	.63	.59	.67	.62	.59	.57
6.0	.67	.60	.55	.67	.59	.54	.65	.59	.54	.63	.58	.53	.62	.57	.53	.51
7.0	.62	.55	.49	.61	.54	.49	.60	.54	.49	.59	.53	.49	.57	.52	.48	.47
8.0	.57	.50	.45	.57	.50	.45	.56	.49	.45	.54	.49	.44	.53	.48	.44	.43
9.0	.53	.46	.41	.53	.46	.41	.52	.45	.41	.51	.45	.41	.50	.45	.41	.39
10.0	.50	.43	.38	.49	.43	.38	.48	.42	.38	.47	.42	.38	.47	.41	.38	.36



C Range: 0 - 360DEG
 C Interval: 15.0DEG
 Test Speed: HIGH
 Temperature: 25.3DEG
 Operators: Meng Yongjian
 Test Date: 2017-06-13

γ Range: 0 - 90DEG
 γ Interval: 1.0DEG
 Test System: EVERFINE GO-2000B_V1 SYSTEM V2.0.288
 Humidity: 52%
 Test Distance: 5.850m [K=1.0000]
 Remarks:

WEC AND CCEC

Test:U:220.7V I:0.0645A P:12.81W PF:0.9005 Lamp Flux:476.625x1 lm		
NAME: FG5-11W-840	TYPE:Downlight	SERIAL No.:
SPEC.:4000K	DIM.: L153mm*W45mm*H60mm	
MFR.: NEKO LIGHTING AG		

ρcc	80%			70%			50%			30%			10%			0
ρw	50%	30%	10%	50%	30%	10%	50%	30%	10%	50%	30%	10%	50%	30%	10%	0
ρfc	20%			20%			20%			20%			20%			0
RCR	RCR:Room Cavity Ratio						Wall Exitance Coefficients(WEC)									
0.0																
1.0	.226	.128	.041	.219	.125	.040	.206	.118	.038	.194	.112	.036	.184	.106	.034	
2.0	.221	.121	.037	.215	.118	.036	.204	.113	.035	.194	.109	.034	.184	.104	.033	
3.0	.211	.112	.034	.206	.110	.033	.196	.106	.032	.187	.102	.031	.179	.099	.031	
4.0	.200	.104	.030	.195	.102	.030	.187	.099	.030	.179	.096	.029	.171	.093	.028	
5.0	.189	.096	.028	.185	.095	.028	.177	.092	.027	.170	.090	.027	.164	.088	.026	
6.0	.178	.089	.026	.175	.088	.025	.168	.086	.025	.162	.084	.025	.156	.082	.024	
7.0	.169	.083	.024	.165	.082	.023	.160	.081	.023	.154	.079	.023	.149	.077	.023	
8.0	.160	.078	.022	.157	.077	.022	.152	.076	.022	.147	.074	.021	.142	.073	.021	
9.0	.151	.073	.020	.149	.073	.020	.144	.071	.020	.140	.070	.020	.135	.069	.020	
10.0	.144	.069	.019	.142	.068	.019	.137	.067	.019	.133	.066	.019	.129	.065	.019	

ρcc	80%			70%			50%			30%			10%			0
ρw	50%	30%	10%	50%	30%	10%	50%	30%	10%	50%	30%	10%	50%	30%	10%	0
ρfc	20%			20%			20%			20%			20%			0
RCR	RCR:Room Cavity Ratio						Ceiling Cavity Exitance Coefficients(CCEC)									
0.0	.190	.190	.190	.163	.163	.163	.111	.111	.111	.064	.064	.064	.020	.020	.020	
1.0	.175	.157	.141	.149	.135	.121	.102	.093	.084	.059	.054	.049	.019	.017	.016	
2.0	.163	.132	.107	.139	.114	.092	.096	.079	.064	.055	.046	.038	.018	.015	.012	
3.0	.153	.114	.083	.131	.098	.072	.090	.068	.050	.052	.040	.030	.017	.013	.010	
4.0	.145	.100	.066	.124	.086	.057	.085	.060	.040	.049	.035	.024	.016	.011	.008	
5.0	.137	.089	.053	.118	.077	.046	.081	.054	.033	.047	.032	.019	.015	.010	.006	
6.0	.130	.080	.044	.112	.069	.039	.077	.049	.027	.045	.029	.016	.014	.009	.005	
7.0	.124	.073	.037	.107	.063	.033	.074	.044	.023	.043	.026	.014	.014	.009	.005	
8.0	.118	.067	.032	.102	.058	.028	.070	.041	.020	.041	.024	.012	.013	.008	.004	
9.0	.113	.062	.028	.097	.054	.024	.067	.038	.017	.039	.022	.010	.013	.007	.003	
10.0	.108	.058	.025	.093	.050	.021	.064	.035	.015	.038	.021	.009	.012	.007	.003	

C Range: 0 - 360DEG
 C Interval: 15.0DEG
 Test Speed: HIGH
 Temperature:25.3DEG
 Operators:Meng Yongjian
 Test Date:2017-06-13

γ Range: 0 - 90DEG
 γ Interval: 1.0DEG
 Test System:EVERFINE GO-2000B_V1 SYSTEM V2.0.288
 Humidity:52%
 Test Distance:5.850m [K=1.0000]
 Remarks:

UGR(Unified Glare Rating) Table

Test:U:220.7V I:0.0645A P:12.81W PF:0.9005 Lamp Flux:476.625x1 lm		
NAME: FG5-11W-840	TYPE:Downlight	SERIAL No.:
SPEC.:4000K	DIM.: L153mm*W45mm*H60mm	
MFR.: NEKO LIGHTING AG		

ceiling/cavity	0.7	0.7	0.5	0.5	0.3	0.7	0.7	0.5	0.5	0.3
walls	0.5	0.3	0.5	0.3	0.3	0.5	0.3	0.5	0.3	0.3
working plane	0.2	0.2	0.2	0.2	0.2	0.2	0.2	0.2	0.2	0.2
Room dimensions	Viewed crosswise					Viewed endwise				
x = 2H y = 2H	17.7	18.9	18.0	19.1	19.3	24.1	25.4	24.4	25.5	25.7
3H	17.5	18.6	17.8	18.9	19.1	25.1	26.2	25.4	26.5	26.7
4H	17.4	18.5	17.7	18.7	19.0	25.4	26.5	25.7	26.7	26.9
6H	17.3	18.3	17.6	18.6	18.9	25.4	26.4	25.8	26.7	27.0
8H	17.3	18.3	17.6	18.5	18.8	25.4	26.4	25.7	26.6	26.9
12H	17.2	18.2	17.6	18.5	18.7	25.4	26.3	25.7	26.6	26.9
4H 2H	18.1	19.2	18.4	19.4	19.7	23.9	25.0	24.2	25.2	25.5
3H	17.9	18.9	18.3	19.1	19.4	24.9	25.9	25.3	26.1	26.4
4H	17.8	18.7	18.2	19.0	19.3	25.2	26.1	25.6	26.4	26.7
6H	17.8	18.5	18.1	18.8	19.2	25.3	26.0	25.7	26.4	26.7
8H	17.7	18.4	18.1	18.8	19.1	25.3	26.0	25.7	26.3	26.7
12H	17.7	18.3	18.1	18.7	19.1	25.2	25.8	25.6	26.2	26.6
8H 4H	17.8	18.5	18.2	18.8	19.2	25.1	25.8	25.5	26.1	26.5
6H	17.7	18.3	18.1	18.7	19.1	25.2	25.7	25.6	26.1	26.5
8H	17.7	18.2	18.1	18.6	19.0	25.1	25.6	25.6	26.0	26.5
12H	17.6	18.0	18.1	18.5	19.0	25.1	25.5	25.6	26.0	26.4
12H 4H	17.7	18.4	18.2	18.7	19.1	25.0	25.7	25.5	26.0	26.4
6H	17.7	18.2	18.1	18.6	19.0	25.1	25.6	25.6	26.0	26.5
8H	17.6	18.0	18.1	18.5	19.0	25.1	25.5	25.6	26.0	26.4
Variations with the observer position at spacings:										
S = 1.0H	+ 2.0 / - 5.0					+ 0.3 / - 0.3				
1.5H	+ 1.4 / - 2.3					+ 0.8 / - 1.5				
2.0H	+ 3.2 / -10.0					+ 1.9 / - 3.8				

CIE Pub.117 Corrected 476.6 lm Total Lamp Luminous Flux. (8log(F/F0) = -2.6)

C Range: 0 - 360DEG
 C Interval: 15.0DEG
 Test Speed: HIGH
 Temperature:25.3DEG
 Operators:Meng Yongjian
 Test Date:2017-06-13

γ Range: 0 - 90DEG
 γ Interval: 1.0DEG
 Test System:EVERFINE GO-2000B_V1 SYSTEM V2.0.288
 Humidity:52%
 Test Distance:5.850m [K=1.0000]
 Remarks:

UTILIZATION FACTORS TABLE

Test:U:220.7V I:0.0645A P:12.81W PF:0.9005 Lamp Flux:476.625x1 lm		
NAME: FG5-11W-840	TYPE:Downlight	SERIAL No.:
SPEC.:4000K	DIM.: L153mm*W45mm*H60mm	
MFR.: NEKO LIGHTING AG		

REFLECTANCE										
Ceiling	0.8	0.8	0.8	0.7	0.7	0.7	0.5	0.5	0.5	0
Walls	0.7	0.5	0.3	0.7	0.5	0.3	0.7	0.5	0.3	0
Working plane	0.2	0.2	0.2	0.2	0.2	0.2	0.2	0.2	0.2	0
ROOM INDEX	UTILIZATION FACTORS(PERCENT) $k(RI) \times RCR = 5$									
k = 0.60	70	61	55	70	61	55	69	60	55	50
0.80	80	71	65	79	71	65	78	70	65	59
1.00	88	79	74	87	79	73	85	79	73	67
1.25	94	86	81	92	85	80	90	84	79	74
1.50	98	91	86	96	90	85	94	88	84	78
2.00	103	97	92	101	96	91	98	93	90	83
2.50	105	100	96	104	99	95	100	96	93	86
3.00	108	103	99	106	101	98	102	99	96	88
4.00	111	107	103	108	105	102	104	102	99	91
5.00	112	109	106	110	107	104	106	103	101	93
ROOM INDEX	UF(total)									Direct
According to DIN EN 13032-2 2004			Suspended				SHRNOM = 1.25			

C Range: 0 - 360DEG
 C Interval: 15.0DEG
 Test Speed: HIGH
 Temperature:25.3DEG
 Operators:Meng Yongjian
 Test Date:2017-06-13

γ Range: 0 - 90DEG
 γ Interval: 1.0DEG
 Test System:EVERFINE GO-2000B_V1 SYSTEM V2.0.288
 Humidity:52%
 Test Distance:5.850m [K=1.0000]
 Remarks:

ISOCANDELA DIAGRAM

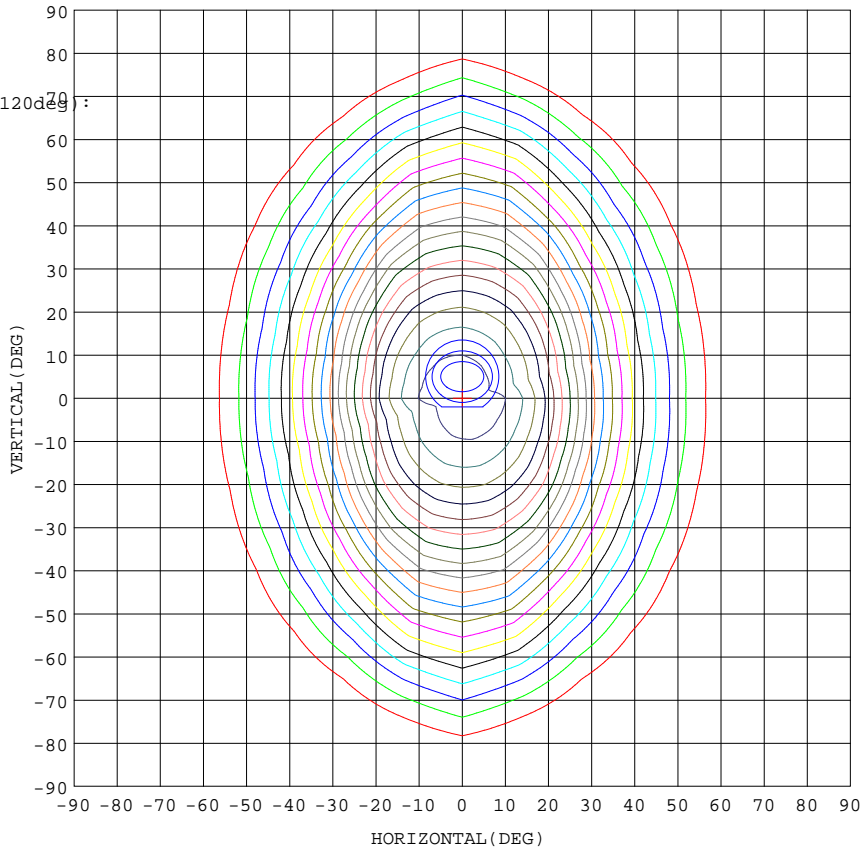
Test:U:220.7V I:0.0645A P:12.81W PF:0.9005 Lamp Flux:476.625x1 lm		
NAME: FG5-11W-840	TYPE:Downlight	SERIAL No.:
SPEC.:4000K	DIM.: L153mm*W45mm*H60mm	
MFR.: NEKO LIGHTING AG		

Conical surface Flux(90deg):

361.59 lm
%lum = 75.9%
%lamp = 75.9%

Conical surface Flux(120deg):

448.72 lm
%lum = 94.1%
%lamp = 94.1%



1. AVG=308.1, MIN=303.3
2. AVG=307.1, MIN=298.8
3. AVG=305.4, MIN=293.7

I_{max}: 318.2 (H0.0, V0.0)
(At: C=0.0, Gamma=0.0)
UNIT: cd

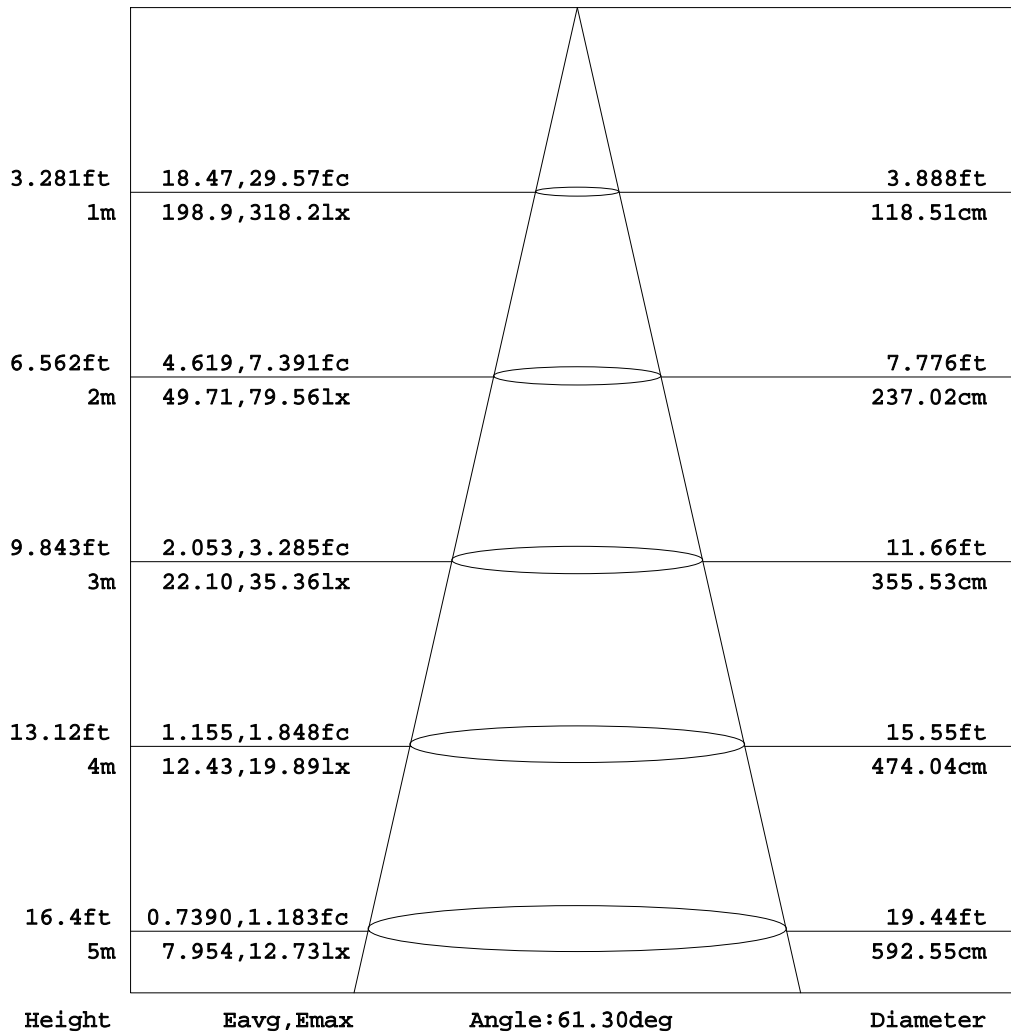
C Range: 0 - 360DEG
C Interval: 15.0DEG
Test Speed: HIGH
Temperature: 25.3DEG
Operators: Meng Yongjian
Test Date: 2017-06-13

γ Range: 0 - 90DEG
γ Interval: 1.0DEG
Test System: EVERFINE GO-2000B_V1 SYSTEM V2.0.288
Humidity: 52%
Test Distance: 5.850m [K=1.0000]
Remarks:

AAI Figure

Test:U:220.7V I:0.0645A P:12.81W PF:0.9005 Lamp Flux:476.625x1 lm		
NAME: FG5-11W-840	TYPE:Downlight	SERIAL No.:
SPEC.:4000K	DIM.: L153mm*W45mm*H60mm	
MFR.: NEKO LIGHTING AG		

Flux out:225.5 lm



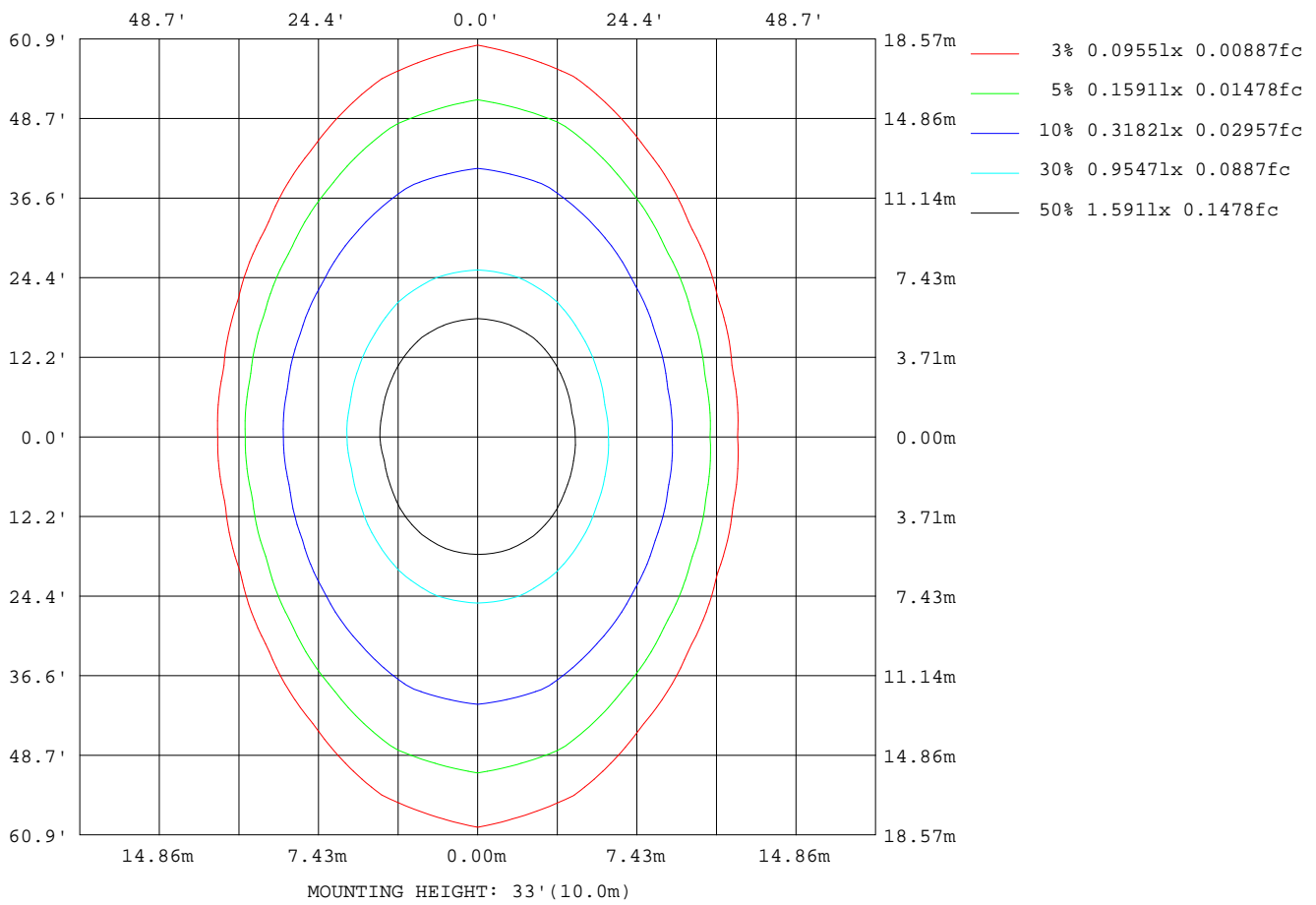
Note:The Curves indicate the illuminated area and the average illumination when the luminaire is at different distance.

C Range: 0 - 360DEG
C Interval: 15.0DEG
Test Speed: HIGH
Temperature:25.3DEG
Operators:Meng Yongjian
Test Date:2017-06-13

γ Range: 0 - 90DEG
γ Interval: 1.0DEG
Test System:EVERFINE GO-2000B_V1 SYSTEM V2.0.288
Humidity:52%
Test Distance:5.850m [K=1.0000]
Remarks:

ISOLUX DIAGRAM

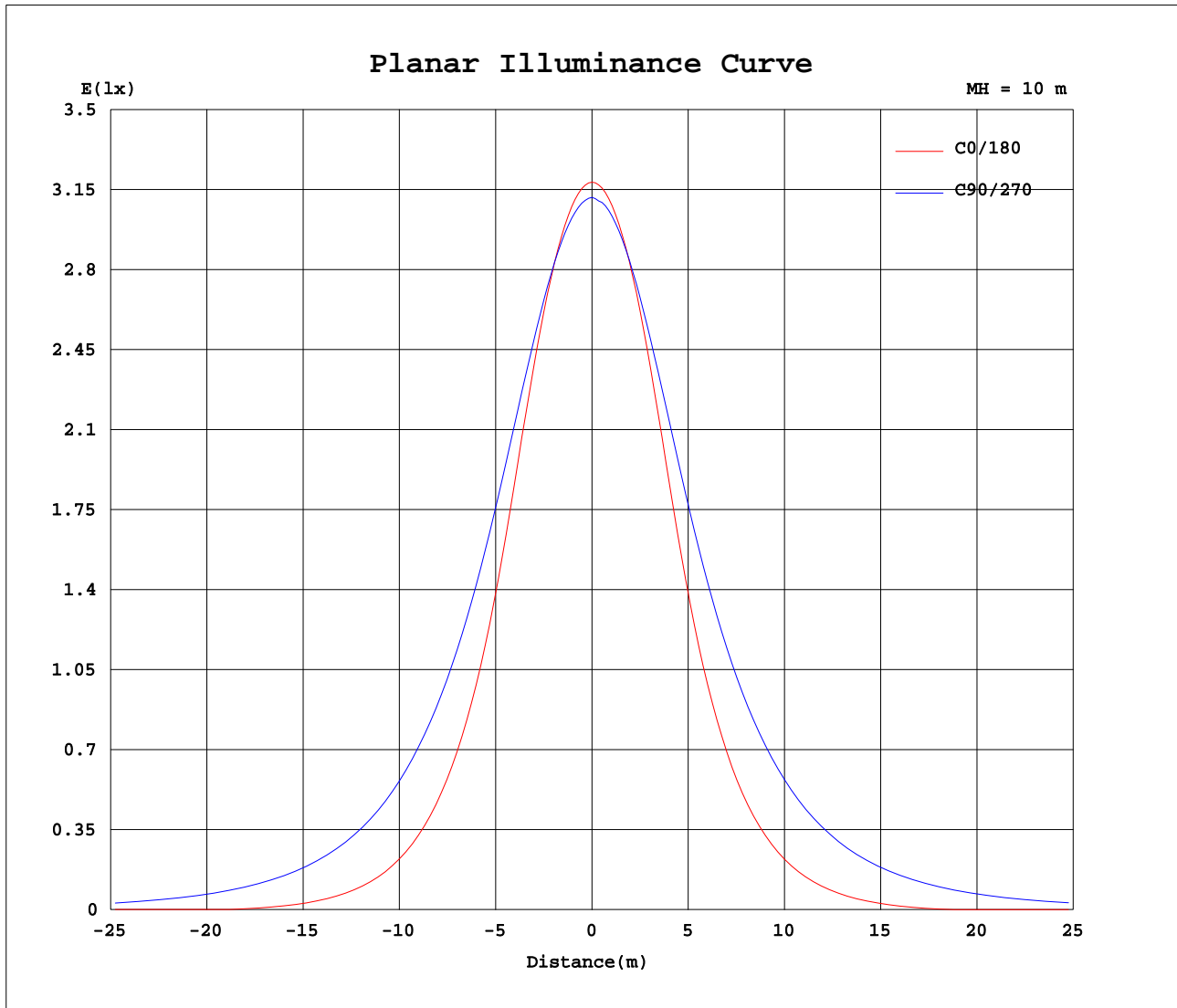
Test:U:220.7V I:0.0645A P:12.81W PF:0.9005 Lamp Flux:476.625x1 lm		
NAME: FG5-11W-840	TYPE:Downlight	SERIAL No.:
SPEC.:4000K	DIM.: L153mm*W45mm*H60mm	
MFR.: NEKO LIGHTING AG		



C Range: 0 - 360DEG
 C Interval: 15.0DEG
 Test Speed: HIGH
 Temperature:25.3DEG
 Operators:Meng Yongjian
 Test Date:2017-06-13

γ Range: 0 - 90DEG
 γ Interval: 1.0DEG
 Test System:EVERFINE GO-2000B_V1 SYSTEM V2.0.288
 Humidity:52%
 Test Distance:5.850m [K=1.0000]
 Remarks:

Planar Illuminance Curve



C Range: 0 - 360DEG
 C Interval: 15.0DEG
 Test Speed: HIGH
 Temperature: 25.3DEG
 Operators: Meng Yongjian
 Test Date: 2017-06-13

γ Range: 0 - 90DEG
 γ Interval: 1.0DEG
 Test System: EVERFINE GO-2000B_V1 SYSTEM V2.0.288
 Humidity: 52%
 Test Distance: 5.850m [K=1.0000]
 Remarks:

LUMINOUS DISTRIBUTION INTENSITY DATA

Test:U:220.7V I:0.0645A P:12.81W PF:0.9005 Lamp Flux:476.625x1 lm		
NAME: FG5-11W-840	TYPE:Downlight	SERIAL No.:
SPEC.:4000K	DIM.: L153mm*W45mm*H60mm	
MFR.: NEKO LIGHTING AG		

Table--1 UNIT: cd

C (DEG) γ (DEG)	0	15	30	45	60	75	90	105	120	135	150	165	180	195	210	225	240	255	270
0	318	317	316	314	313	312	312	311	310	310	309	308	318	317	316	314	313	312	312
5	314	313	312	311	310	309	309	308	307	306	305	305	315	313	312	311	311	310	309
10	303	302	301	302	302	302	301	300	299	297	294	293	303	301	302	302	303	303	302
15	281	282	283	286	288	290	289	288	285	282	277	273	282	281	284	286	289	290	291
20	249	251	256	264	270	273	273	272	267	260	250	243	249	250	257	264	271	273	275
25	207	211	221	236	246	252	253	251	243	231	214	203	207	209	221	235	247	252	254
30	164	169	181	201	219	229	230	228	216	196	175	162	164	167	181	199	220	229	232
35	126	130	143	164	188	204	207	203	186	160	138	125	126	129	143	163	189	204	208
40	91.7	95.9	108	129	156	179	183	177	154	126	104	91.4	91.3	94.5	107	128	157	178	185
45	62.8	66.5	77.1	97.4	125	153	159	152	123	94.8	74.2	63.2	62.5	65.4	77.0	96.2	125	152	161
50	39.1	42.3	51.2	69.6	96.0	127	136	126	94.5	67.6	49.0	39.9	39.1	41.3	51.2	68.6	95.9	126	137
55	20.4	23.0	30.2	45.6	69.9	101	113	101	68.9	44.3	28.6	21.2	20.1	22.0	30.2	44.7	70.0	101	114
60	5.89	7.79	13.6	25.9	46.4	76.4	91.1	76.0	45.7	25.0	12.4	6.36	5.11	6.77	13.5	25.3	46.8	76.1	92.2
65	1.13	0.62	0.73	10.5	26.4	52.1	69.1	51.9	26.0	9.82	0.35	0.36	0.59	0.34	0.50	9.98	26.8	51.7	70.2
70	1.31	0.73	0.43	0.24	10.6	30.9	47.6	30.8	10.4	0.21	0.29	0.40	0.63	0.35	0.26	0.22	11.0	30.7	48.9
75	1.26	0.77	0.28	0.20	0.23	13.4	27.9	13.5	0.21	0.15	0.18	0.45	0.71	0.36	0.22	0.17	0.28	13.5	29.3
80	1.04	0.65	0.25	0.13	0.11	2.17	10.4	2.26	0.11	0.09	0.12	0.20	0.74	0.32	0.12	0.11	0.09	2.31	11.6
85	0.07	0.05	0.07	0.04	0.06	0.07	0.17	0.08	0.06	0.03	0.05	0.03	0.03	0.05	0.03	0.04	0.03	0.09	0.22
90	0.20	0.19	0.04	0.03	0.05	0.07	0.08	0.07	0.04	0.03	0.04	0.17	0.17	0.16	0.03	0.02	0.02	0.06	0.07

C Range: 0 - 360DEG	γ Range: 0 - 90DEG
C Interval: 15.0DEG	γ Interval: 1.0DEG
Test Speed: HIGH	Test System:EVERFINE GO-2000B_V1 SYSTEM V2.0.288
Temperature:25.3DEG	Humidity:52%
Operators:Meng Yongjian	Test Distance:5.850m [K=1.0000]
Test Date:2017-06-13	Remarks:

LUMINOUS DISTRIBUTION INTENSITY DATA

Test:U:220.7V I:0.0645A P:12.81W PF:0.9005 Lamp Flux:476.625x1 lm		
NAME: FG5-11W-840	TYPE:Downlight	SERIAL No.:
SPEC.:4000K	DIM.: L153mm*W45mm*H60mm	
MFR.: NEKO LIGHTING AG		

Table--2

UNIT: cd

C(DEC) γ (DEC)	285	300	315	330	345												
0	311	310	310	309	308												
5	308	308	307	306	304												
10	301	300	298	296	294												
15	289	287	283	279	275												
20	272	269	261	253	245												
25	252	246	233	219	206												
30	228	219	199	180	165												
35	204	189	163	142	128												
40	178	158	129	108	94.2												
45	153	127	97.6	77.6	65.5												
50	127	97.6	70.0	52.0	41.7												
55	102	71.8	46.1	31.1	22.7												
60	77.7	48.5	26.6	14.5	7.86												
65	53.4	28.4	11.2	1.68	0.51												
70	32.1	12.2	0.27	0.33	0.58												
75	14.5	1.11	0.20	0.25	0.59												
80	2.90	0.08	0.14	0.21	0.46												
85	0.09	0.04	0.05	0.05	0.06												
90	0.06	0.04	0.02	0.02	0.11												

C Range: 0 - 360DEG	γ Range: 0 - 90DEG
C Interval: 15.0DEG	γ Interval: 1.0DEG
Test Speed: HIGH	Test System:EVERFINE GO-2000B_V1 SYSTEM V2.0.288
Temperature:25.3DEG	Humidity:52%
Operators:Meng Yongjian	Test Distance:5.850m [K=1.0000]
Test Date:2017-06-13	Remarks:

Photometric Data Table [cd]

24.0	251.0	239.3	226.6	214.1
27.0	235.7	220.4	203.3	189.7
30.0	219.1	199.2	180.1	165.2
33.0	201.3	177.5	156.9	142.3
36.0	183.2	156.0	135.3	120.6
39.0	164.4	135.1	114.3	100.5
42.0	145.5	115.8	95.20	82.16
45.0	127.0	97.56	77.59	65.52
48.0	108.7	80.60	61.59	50.55
51.0	92.22	64.93	47.40	37.51
54.0	76.76	50.52	34.88	26.17
57.0	62.17	37.86	23.94	16.34
60.0	48.52	26.62	14.54	7.862
63.0	35.95	16.90	6.450	0.6542
66.0	24.78	8.608	0.3605	0.5225
69.0	15.12	1.624	0.3345	0.5727
72.0	7.186	0.2275	0.3058	0.5903
75.0	1.105	0.2012	0.2514	0.5882
78.0	0.1200	0.1553	0.2317	0.5293
81.0	0.0720	0.0922	0.1726	0.4006
84.0	0.0437	0.0526	0.0718	0.1936
87.0	0.0415	0.0394	0.0240	0.0481
90.0	0.0437	0.0241	0.0197	0.1093

C Range: 0 - 360DEG
 C Interval: 15.0DEG
 Test Speed: HIGH
 Temperature: 25.3DEG
 Operators: Meng Yongjian
 Test Date: 2017-06-13

γ Range: 0 - 90DEG
 γ Interval: 1.0DEG
 Test System: EVERFINE GO-2000B_V1 SYSTEM V2.0.288
 Humidity: 52%
 Test Distance: 5.850m [K=1.0000]
 Remarks: