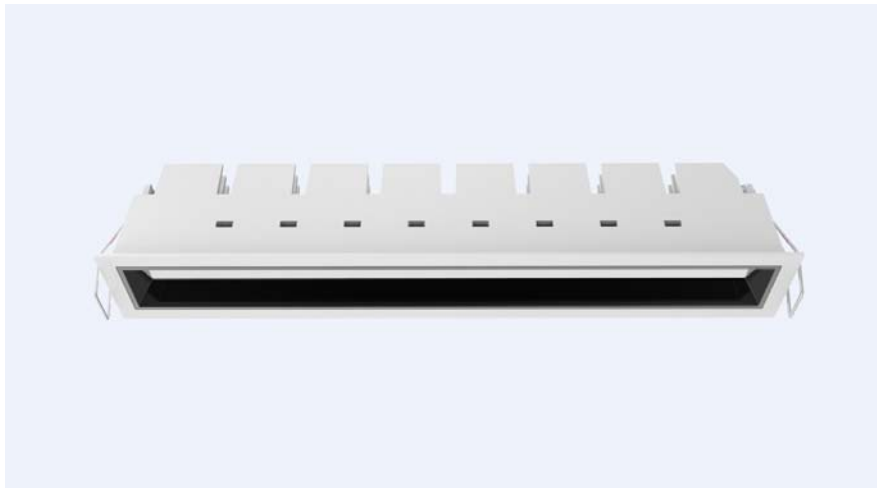


LED Downlight FUSION Series FG10-22W-840



Light Output Ratio:	100.0%	
Luminaire Power:	25.05 W	
SHR Nominal:	1.00	Calculated using the TM5
SHR Maximum:	1.05	fine grid method.

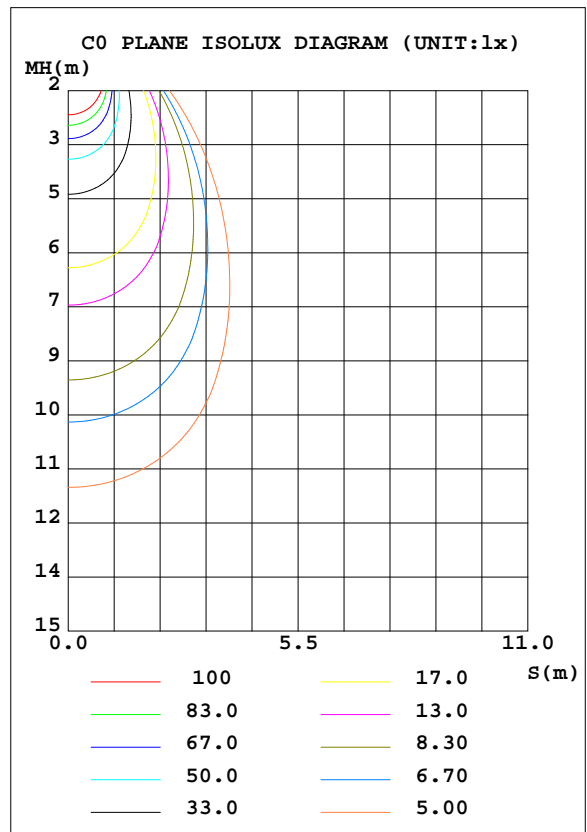
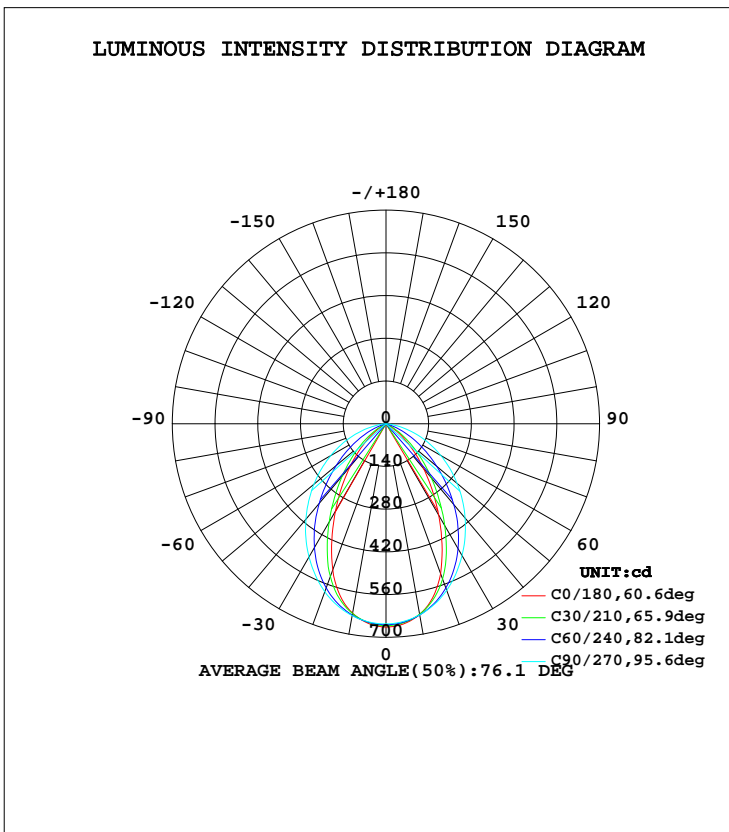
C Range: 0 - 360DEG
C Interval: 15.0DEG
Test Speed: HIGH
Temperature: 25.3DEG
Operators: Meng Yongjian
Test Date: 2017-06-13

γ Range: 0 - 90DEG
 γ Interval: 1.0DEG
Test System: EVERFINE GO-2000B_V1 SYSTEM V2.0.288
Humidity: 52%
Test Distance: 5.850m [K=1.0000]
Remarks:

LUMINAIRE PHOTOMETRIC TEST REPORT

Test:U:220.7V I:0.1179A P:25.05W PF:0.9632 Lamp Flux:1024.4x1 lm		
NAME: FG10-22W-840	TYPE:Downlight	SERIAL No.:
SPEC.:4000K	DIM.: L290mm*W45mm*H60mm	
MFR.: NEKO LIGHTING AG		

DATA OF LAMP		PHOTOMETRIC DATA				Eff: 40.89 lm/W
MODEL	CREE-4000K	I _{max} (cd)	666.0	S/MH(C0/180)	0.89	
NOMINAL POWER(W)	24	LOR(%)	100.0	S/MH(C90/270)	1.15	
RATED VOLTAGE(V)	220	TOTAL FLUX(lm)	1024.4	η UP, DN(C0-180)	0.0, 49.8	
NOMINAL FLUX(lm)	1024.4	CIE CLASS	DIRECT	η UP, DN(C180-360)	0.0, 50.2	
LAMPS INSIDE	1	η up(%)	0.0	CIBSE SHR NOM	1.00	
TEST VOLTAGE(V)	220	η down(%)	100.0	CIBSE SHR MAX	1.05	



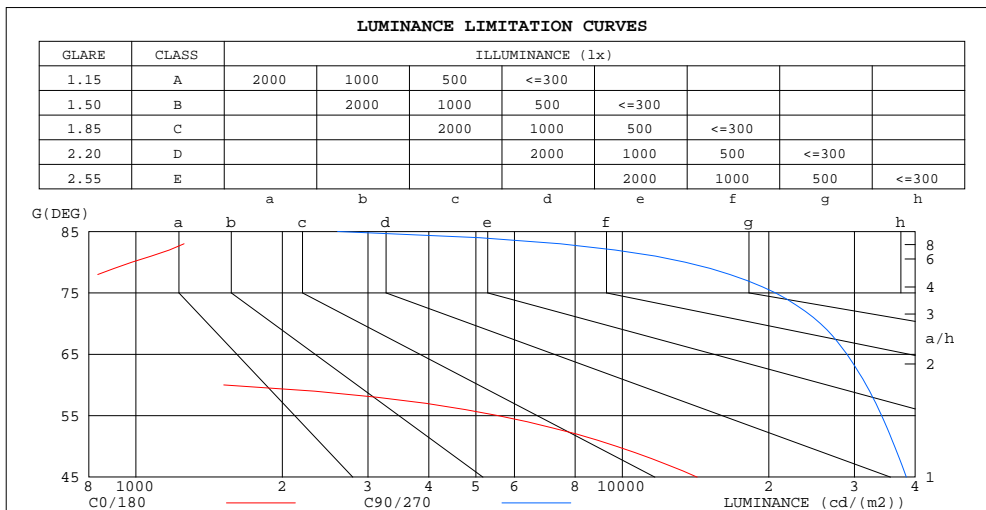
C Range: 0 - 360DEG
 C Interval: 15.0DEG
 Test Speed: HIGH
 Temperature:25.3DEG
 Operators:Meng Yongjian
 Test Date:2017-06-13

γ Range: 0 - 90DEG
 γ Interval: 1.0DEG
 Test System:EVERFINE GO-2000B_V1 SYSTEM V2.0.288
 Humidity:52%
 Test Distance:5.850m [K=1.0000]
 Remarks:

**ZONAL FLUX DIAGRAM
AND LUMINANCE LIMITATION CURVES**

ZONAL FLUX DIAGRAM:

γ	C0	C45	C90	C135	C180	C225	C270	C315	γ	Φ zone	Φ total	Φ lum,lamp
10	634.6	635.8	636.1	625.3	630.6	633.6	638.7	629.7	0- 10	61.53	61.53	6.01,6.01
20	523.4	560.6	581.3	544.0	510.2	553.6	585.9	555.3	10- 20	167.7	229.3	22.4,22.4
30	345.3	431.4	498.6	408.3	331.8	418.4	504.7	425.3	20- 30	223.8	453.1	44.2,44.2
40	192.1	281.8	403.6	261.8	182.9	270.5	408.2	276.6	30- 40	219.7	672.8	65.7,65.7
50	81.72	156.0	304.4	141.5	76.64	148.0	308.2	152.0	40- 50	174.7	847.5	82.7,82.7
60	9.889	60.01	207.0	51.62	7.537	55.92	209.3	57.57	50- 60	110.8	958.3	93.6,93.6
70	1.967	1.147	114.0	1.034	1.885	0.9705	115.0	1.002	60- 70	49.65	1008	98.4,98.4
80	2.224	0.8569	30.49	0.7257	1.788	0.6561	31.75	0.6649	70- 80	14.87	1023	99.8,99.8
90	0.3214	0.4898	0.2536	0.4657	0.3083	0.3083	0.2165	0.2974	80- 90	1.548	1024	100,100
100									90-100			
110									100-110			
120									110-120			
130									120-130			
140									130-140			
150									140-150			
160									150-160			
170									160-170			
180									170-180			
DEG	LUMINOUS INTENSITY:cd									UNIT:lm		



LUMINANCE cd/(m2)		
G(DEG)	C0/180	C90/270
85	236	2597
80	981	13456
75	663	20647
70	441	25546
65	290	28949
60	1516	31722
55	5561	34122
50	9742	36282
45	14245	38363

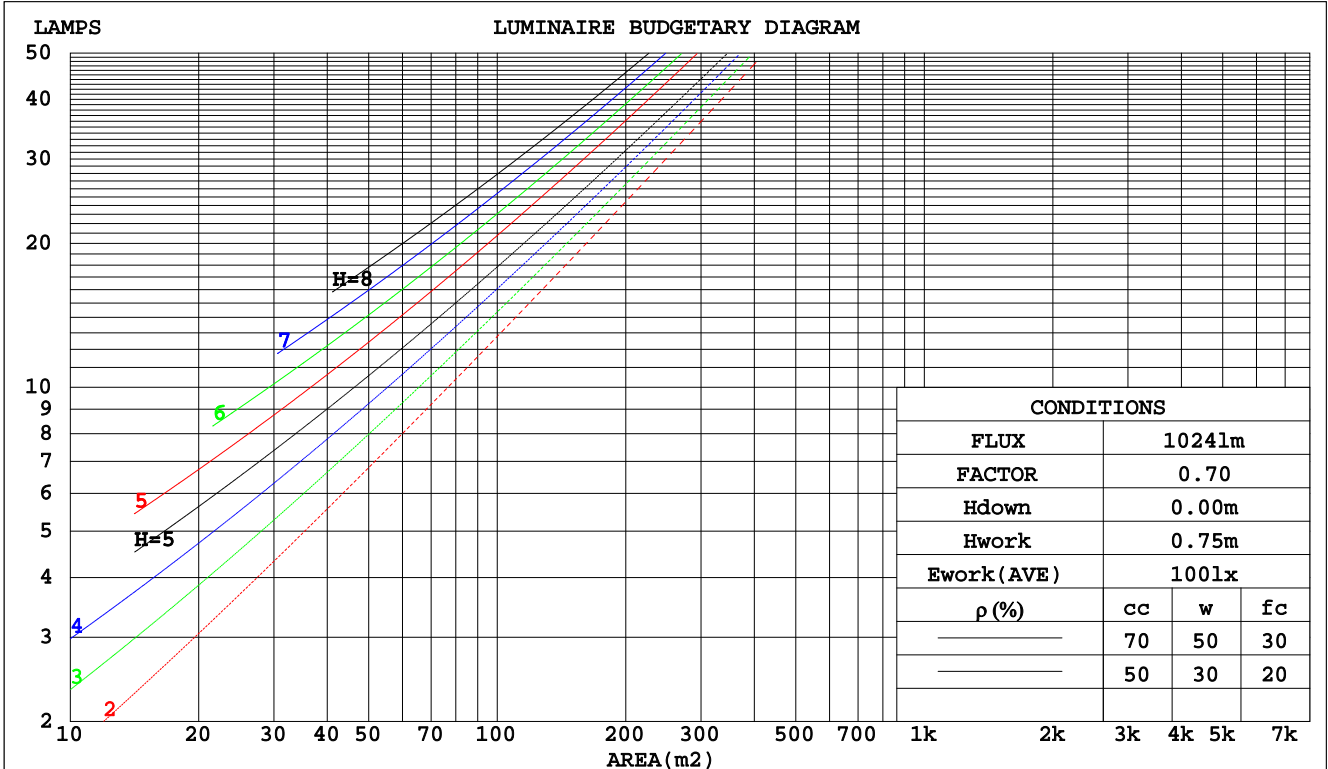
C Range: 0 - 360DEG
C Interval: 15.0DEG
Test Speed: HIGH
Temperature:25.3DEG
Operators:Meng Yongjian
Test Date:2017-06-13

γ Range: 0 - 90DEG
 γ Interval: 1.0DEG
Test System:EVERFINE GO-2000B_V1 SYSTEM V2.0.288
Humidity:52%
Test Distance:5.850m [K=1.0000]
Remarks:

CU AND LUMINAIRE BUDGETARY ESTIMATE DIAGRAM

Test:U:220.7V I:0.1179A P:25.05W PF:0.9632 Lamp Flux:1024.4x1 lm		
NAME: FG10-22W-840	TYPE:Downlight	SERIAL No.:
SPEC.:4000K	DIM.: L290mm*W45mm*H60mm	
MFR.: NEKO LIGHTING AG		

pcc	80%			70%			50%			30%			10%			0
	50%	30%	10%	50%	30%	10%	50%	30%	10%	50%	30%	10%	50%	30%	10%	0
pw																0
pfc	20%			20%			20%			20%			20%			0
RCR	RCR:Room Cavity Ratio Coefficients of Utilization(CU)															
0.0	1.19	1.19	1.19	1.16	1.16	1.16	1.11	1.11	1.11	1.06	1.06	1.06	1.02	1.02	1.02	.00
1.0	1.08	1.05	1.02	1.06	1.03	1.00	1.02	.99	.97	.98	.96	.94	.94	.93	.92	.90
2.0	.98	.92	.88	.96	.91	.87	.92	.88	.85	.89	.86	.83	.86	.84	.81	.79
3.0	.88	.82	.77	.87	.81	.76	.84	.79	.75	.81	.77	.73	.79	.75	.72	.70
4.0	.80	.73	.67	.79	.72	.67	.77	.71	.66	.74	.69	.65	.72	.68	.65	.63
5.0	.73	.66	.60	.72	.65	.60	.70	.64	.59	.68	.63	.59	.67	.62	.58	.56
6.0	.67	.59	.54	.66	.59	.54	.64	.58	.53	.63	.57	.53	.61	.56	.53	.51
7.0	.62	.54	.49	.61	.54	.49	.59	.53	.48	.58	.52	.48	.57	.52	.48	.46
8.0	.57	.50	.44	.56	.49	.44	.55	.49	.44	.54	.48	.44	.53	.48	.44	.42
9.0	.53	.46	.41	.52	.45	.41	.51	.45	.41	.50	.44	.40	.49	.44	.40	.39
10.0	.49	.42	.38	.49	.42	.38	.48	.42	.37	.47	.41	.37	.46	.41	.37	.36



C Range: 0 - 360DEG
 C Interval: 15.0DEG
 Test Speed: HIGH
 Temperature:25.3DEG
 Operators:Meng Yongjian
 Test Date:2017-06-13

γ Range: 0 - 90DEG
 γ Interval: 1.0DEG
 Test System:EVERFINE GO-2000B_V1 SYSTEM V2.0.288
 Humidity:52%
 Test Distance:5.850m [K=1.0000]
 Remarks:

WEC AND CCEC

Test:U:220.7V I:0.1179A P:25.05W PF:0.9632 Lamp Flux:1024.4x1 lm		
NAME: FG10-22W-840	TYPE:Downlight	SERIAL No.:
SPEC.:4000K	DIM.: L290mm*W45mm*H60mm	
MFR.: NEKO LIGHTING AG		

ρcc	80%			70%			50%			30%			10%			0
ρw	50%	30%	10%	50%	30%	10%	50%	30%	10%	50%	30%	10%	50%	30%	10%	0
ρfc	20%			20%			20%			20%			20%			0
RCR	RCR:Room Cavity Ratio						Wall Exitance Coefficients(WEC)									
0.0																
1.0	.229	.130	.041	.222	.127	.040	.210	.120	.038	.198	.114	.037	.187	.108	.035	
2.0	.224	.123	.038	.218	.120	.037	.207	.115	.036	.196	.110	.034	.187	.106	.033	
3.0	.213	.113	.034	.208	.111	.034	.198	.107	.033	.189	.104	.032	.181	.100	.031	
4.0	.202	.105	.031	.197	.103	.031	.189	.100	.030	.181	.097	.029	.173	.094	.029	
5.0	.190	.097	.028	.186	.096	.028	.179	.093	.027	.172	.091	.027	.165	.088	.027	
6.0	.180	.090	.026	.176	.089	.026	.170	.087	.025	.163	.085	.025	.158	.083	.025	
7.0	.170	.084	.024	.167	.083	.024	.161	.081	.023	.155	.080	.023	.150	.078	.023	
8.0	.161	.079	.022	.158	.078	.022	.153	.076	.022	.148	.075	.022	.143	.073	.021	
9.0	.152	.074	.021	.150	.073	.020	.145	.072	.020	.141	.070	.020	.136	.069	.020	
10.0	.145	.069	.019	.142	.069	.019	.138	.068	.019	.134	.067	.019	.130	.065	.019	

ρcc	80%			70%			50%			30%			10%			0
ρw	50%	30%	10%	50%	30%	10%	50%	30%	10%	50%	30%	10%	50%	30%	10%	0
ρfc	20%			20%			20%			20%			20%			0
RCR	RCR:Room Cavity Ratio						Ceiling Cavity Exitance Coefficients(CCEC)									
0.0	.190	.190	.190	.163	.163	.163	.111	.111	.111	.064	.064	.064	.020	.020	.020	
1.0	.175	.157	.141	.150	.135	.121	.102	.093	.084	.059	.054	.049	.019	.017	.016	
2.0	.163	.132	.106	.140	.114	.092	.096	.079	.064	.055	.046	.038	.018	.015	.012	
3.0	.154	.114	.082	.132	.098	.071	.090	.068	.050	.052	.040	.030	.017	.013	.010	
4.0	.145	.100	.065	.125	.086	.057	.086	.060	.040	.050	.035	.024	.016	.011	.008	
5.0	.138	.089	.053	.118	.077	.046	.081	.054	.033	.047	.032	.019	.015	.010	.006	
6.0	.131	.080	.044	.112	.070	.038	.078	.049	.027	.045	.029	.016	.015	.009	.005	
7.0	.124	.073	.037	.107	.063	.032	.074	.044	.023	.043	.026	.014	.014	.009	.005	
8.0	.119	.067	.032	.102	.058	.028	.071	.041	.020	.041	.024	.012	.013	.008	.004	
9.0	.113	.062	.028	.098	.054	.024	.068	.038	.017	.039	.022	.010	.013	.007	.003	
10.0	.108	.058	.024	.093	.050	.021	.065	.035	.015	.038	.021	.009	.012	.007	.003	

C Range: 0 - 360DEG
 C Interval: 15.0DEG
 Test Speed: HIGH
 Temperature:25.3DEG
 Operators:Meng Yongjian
 Test Date:2017-06-13

γ Range: 0 - 90DEG
 γ Interval: 1.0DEG
 Test System:EVERFINE GO-2000B_V1 SYSTEM V2.0.288
 Humidity:52%
 Test Distance:5.850m [K=1.0000]
 Remarks:

UGR(Unified Glare Rating) Table

Test:U:220.7V I:0.1179A P:25.05W PF:0.9632 Lamp Flux:1024.4x1 lm		
NAME: FG10-22W-840	TYPE:Downlight	SERIAL No.:
SPEC.:4000K	DIM.: L290mm*W45mm*H60mm	
MFR.: NEKO LIGHTING AG		

ceiling/cavity	0.7	0.7	0.5	0.5	0.3	0.7	0.7	0.5	0.5	0.3
walls	0.5	0.3	0.5	0.3	0.3	0.5	0.3	0.5	0.3	0.3
working plane	0.2	0.2	0.2	0.2	0.2	0.2	0.2	0.2	0.2	0.2
Room dimensions	Viewed crosswise					Viewed endwise				
x = 2H y = 2H	18.2	19.4	18.4	19.6	19.8	25.0	26.2	25.2	26.4	26.6
3H	18.0	19.1	18.2	19.3	19.6	26.1	27.2	26.4	27.5	27.7
4H	17.9	19.0	18.2	19.2	19.4	26.4	27.5	26.7	27.8	28.0
6H	17.8	18.8	18.1	19.1	19.3	26.6	27.6	26.9	27.9	28.1
8H	17.7	18.7	18.1	19.0	19.3	26.6	27.6	26.9	27.8	28.1
12H	17.7	18.6	18.0	18.9	19.2	26.5	27.5	26.9	27.8	28.0
4H 2H	18.7	19.8	19.0	20.0	20.2	24.8	25.9	25.1	26.1	26.3
3H	18.5	19.4	18.8	19.7	20.0	25.9	26.9	26.3	27.2	27.4
4H	18.4	19.2	18.8	19.6	19.9	26.3	27.2	26.7	27.5	27.8
6H	18.3	19.1	18.7	19.4	19.8	26.5	27.2	26.9	27.6	27.9
8H	18.3	19.0	18.7	19.3	19.7	26.5	27.2	26.9	27.5	27.9
12H	18.2	18.9	18.7	19.3	19.7	26.4	27.1	26.9	27.4	27.8
8H 4H	18.4	19.1	18.8	19.4	19.8	26.2	26.9	26.6	27.2	27.6
6H	18.3	18.9	18.7	19.3	19.7	26.3	26.9	26.8	27.3	27.7
8H	18.3	18.8	18.7	19.2	19.6	26.3	26.8	26.8	27.3	27.7
12H	18.2	18.7	18.7	19.1	19.6	26.3	26.7	26.8	27.2	27.6
12H 4H	18.3	19.0	18.8	19.3	19.7	26.1	26.8	26.5	27.1	27.5
6H	18.3	18.8	18.7	19.2	19.6	26.3	26.8	26.7	27.2	27.7
8H	18.2	18.7	18.7	19.1	19.6	26.3	26.7	26.8	27.2	27.6
Variations with the observer position at spacings:										
S = 1.0H	+ 2.0 / - 4.9					+ 0.3 / - 0.3				
1.5H	+ 1.3 / - 2.3					+ 0.7 / - 1.2				
2.0H	+ 3.1 / -10.0					+ 1.7 / - 3.2				

CIE Pub.117 Corrected 1024 lm Total Lamp Luminous Flux.(8log(F/F0) = 0.1)

C Range: 0 - 360DEG
 C Interval: 15.0DEG
 Test Speed: HIGH
 Temperature:25.3DEG
 Operators:Meng Yongjian
 Test Date:2017-06-13

γ Range: 0 - 90DEG
 γ Interval: 1.0DEG
 Test System:EVERFINE GO-2000B_V1 SYSTEM V2.0.288
 Humidity:52%
 Test Distance:5.850m [K=1.0000]
 Remarks:

UTILIZATION FACTORS TABLE

Test:U:220.7V I:0.1179A P:25.05W PF:0.9632 Lamp Flux:1024.4x1 lm		
NAME: FG10-22W-840	TYPE:Downlight	SERIAL No.:
SPEC.:4000K	DIM.: L290mm*W45mm*H60mm	
MFR.: NEKO LIGHTING AG		

REFLECTANCE										
Ceiling	0.8	0.8	0.8	0.7	0.7	0.7	0.5	0.5	0.5	0
Walls	0.7	0.5	0.3	0.7	0.5	0.3	0.7	0.5	0.3	0
Working plane	0.2	0.2	0.2	0.2	0.2	0.2	0.2	0.2	0.2	0
ROOM INDEX	UTILIZATION FACTORS(PERCENT) $k(RI) \times RCR = 5$									
k = 0.60	70	60	55	69	60	54	68	60	54	49
0.80	79	70	65	79	70	64	77	69	64	59
1.00	87	79	73	86	78	73	84	79	72	67
1.25	93	85	80	92	85	80	90	83	79	73
1.50	97	90	85	96	89	84	93	88	83	77
2.00	102	96	92	101	95	91	98	93	89	83
2.50	105	99	95	103	98	94	100	96	92	85
3.00	108	103	99	106	101	98	102	98	95	88
4.00	110	106	103	108	105	102	104	101	99	91
5.00	112	109	106	110	107	104	106	103	101	93
ROOM INDEX	UF(total)									Direct
According to DIN EN 13032-2 2004			Suspended				SHRNOM = 1.25			

C Range: 0 - 360DEG
 C Interval: 15.0DEG
 Test Speed: HIGH
 Temperature:25.3DEG
 Operators:Meng Yongjian
 Test Date:2017-06-13

γ Range: 0 - 90DEG
 γ Interval: 1.0DEG
 Test System:EVERFINE GO-2000B_V1 SYSTEM V2.0.288
 Humidity:52%
 Test Distance:5.850m [K=1.0000]
 Remarks:

ISOCANDELA DIAGRAM

Test:U:220.7V I:0.1179A P:25.05W PF:0.9632 Lamp Flux:1024.4x1 lm		
NAME: FG10-22W-840	TYPE:Downlight	SERIAL No.:
SPEC.:4000K	DIM.: L290mm*W45mm*H60mm	
MFR.: NEKO LIGHTING AG		

Conical surface Flux(90deg):

767.48 lm

%lum = 74.9%

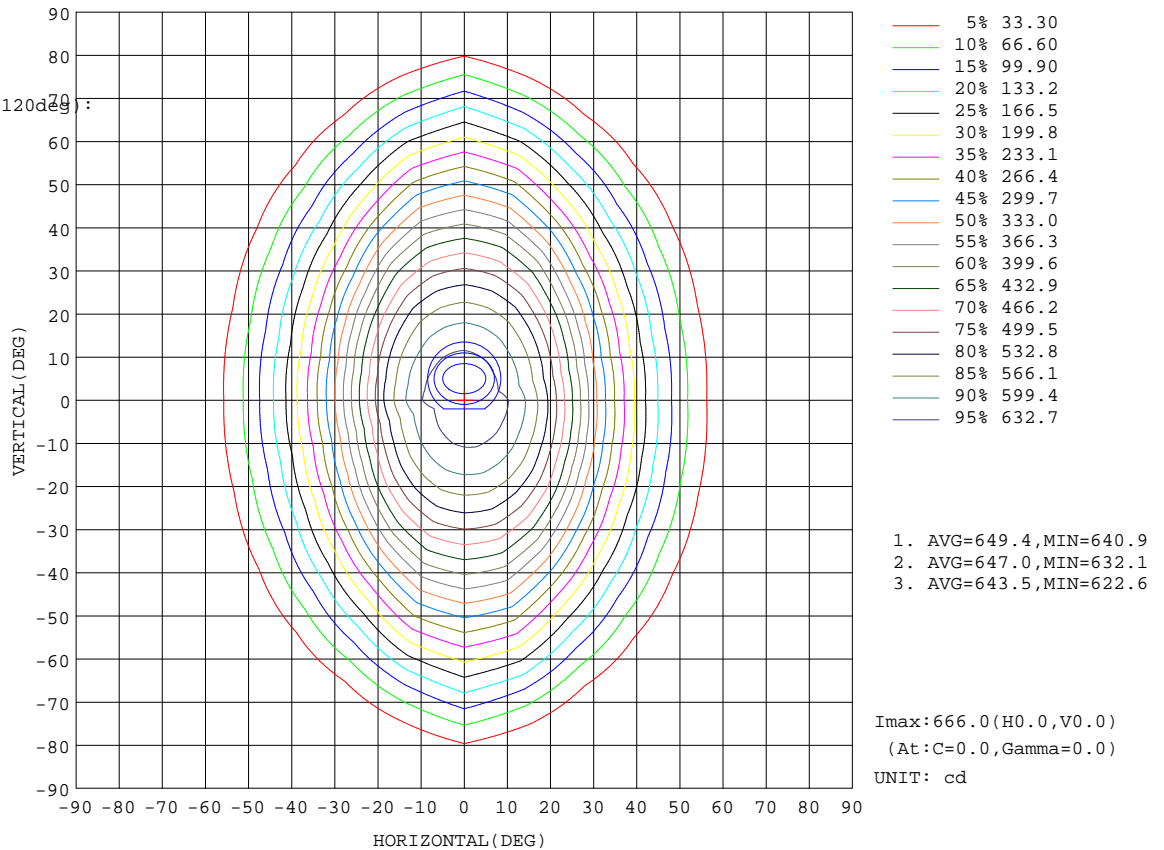
%lamp = 74.9%

Conical surface Flux(120deg):

958.32 lm

%lum = 93.6%

%lamp = 93.6%

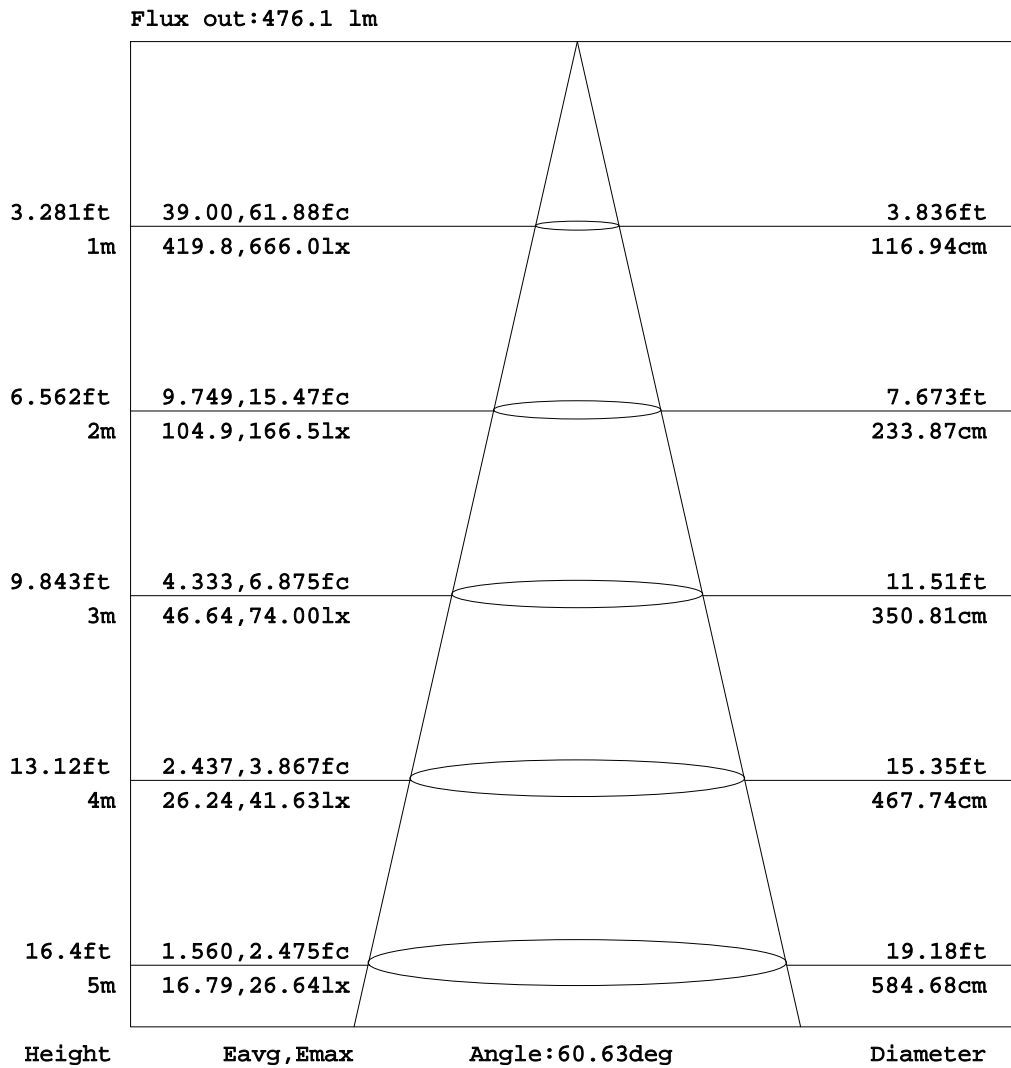


C Range: 0 - 360DEG
C Interval: 15.0DEG
Test Speed: HIGH
Temperature:25.3DEG
Operators:Meng Yongjian
Test Date:2017-06-13

γ Range: 0 - 90DEG
γ Interval: 1.0DEG
Test System:EVERFINE GO-2000B_V1 SYSTEM V2.0.288
Humidity:52%
Test Distance:5.850m [K=1.0000]
Remarks:

AAI Figure

Test:U:220.7V I:0.1179A P:25.05W PF:0.9632 Lamp Flux:1024.4x1 lm		
NAME: FG10-22W-840	TYPE:Downlight	SERIAL No.:
SPEC.:4000K	DIM.: L290mm*W45mm*H60mm	
MFR.: NEKO LIGHTING AG		



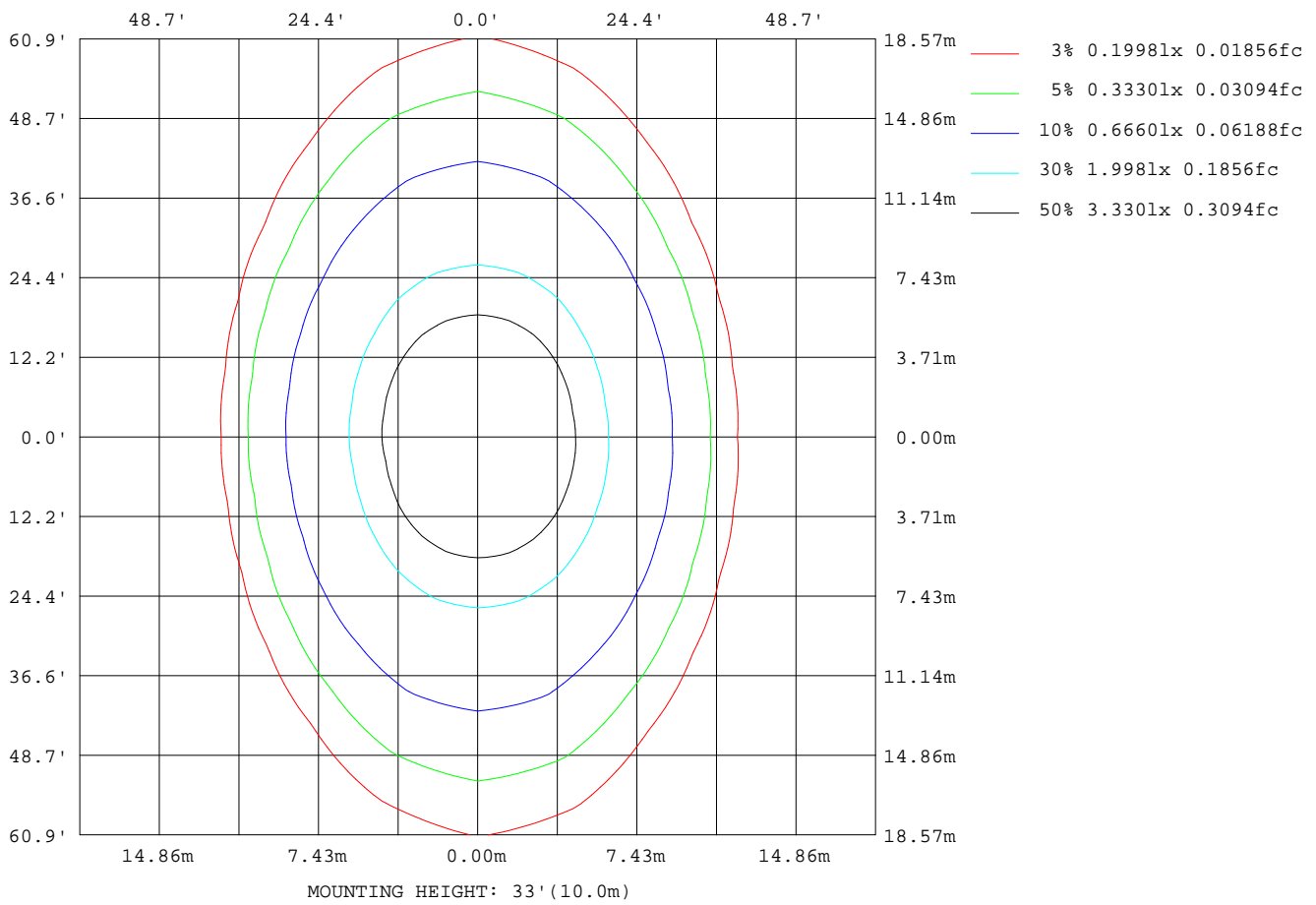
Note:The Curves indicate the illuminated area and the average illumination when the luminaire is at different distance.

C Range: 0 - 360DEG
C Interval: 15.0DEG
Test Speed: HIGH
Temperature:25.3DEG
Operators:Meng Yongjian
Test Date:2017-06-13

γ Range: 0 - 90DEG
γ Interval: 1.0DEG
Test System:EVERFINE GO-2000B_V1 SYSTEM V2.0.288
Humidity:52%
Test Distance:5.850m [K=1.0000]
Remarks:

ISOLUX DIAGRAM

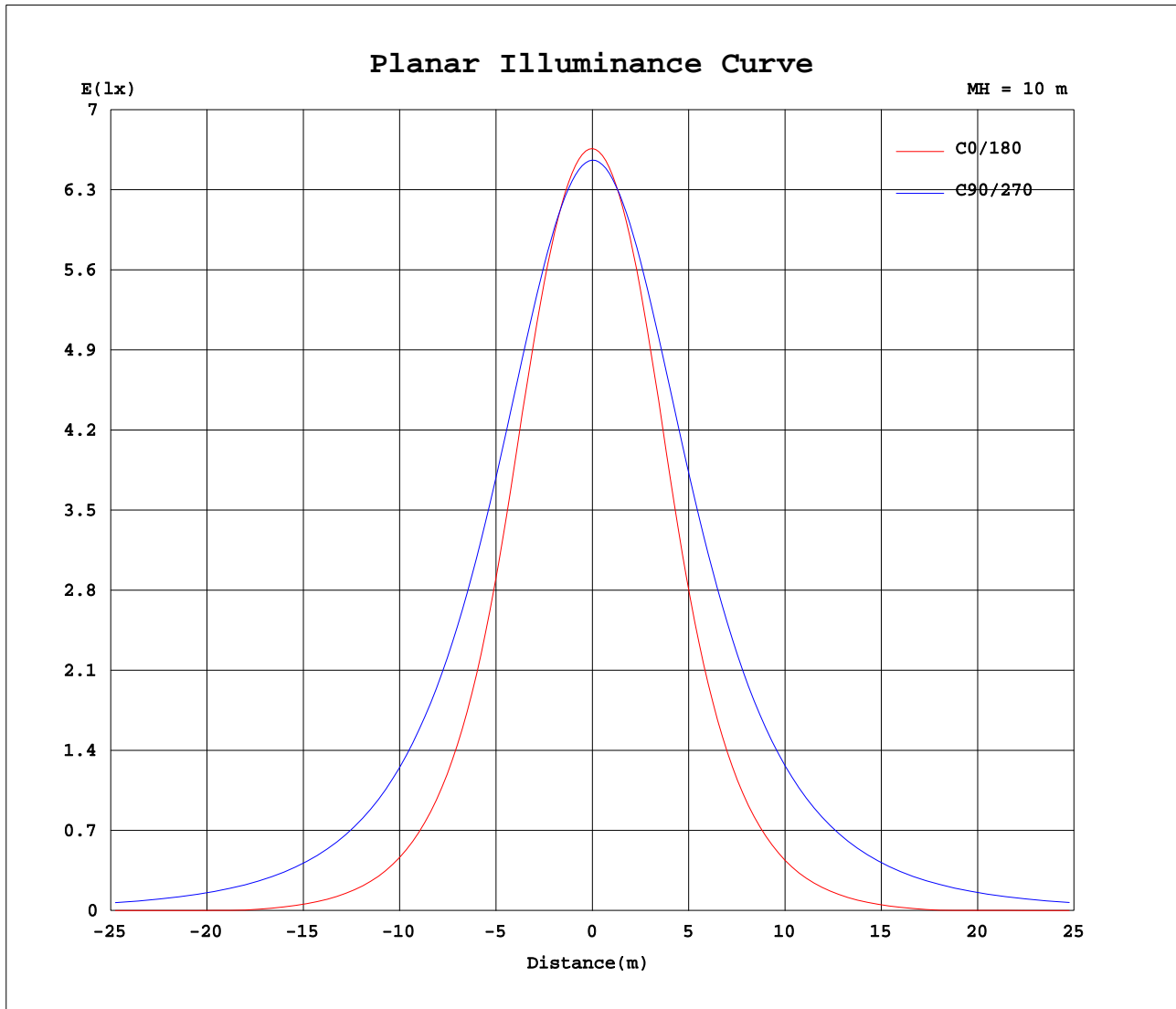
Test:U:220.7V I:0.1179A P:25.05W PF:0.9632 Lamp Flux:1024.4x1 lm		
NAME: FG10-22W-840	TYPE:Downlight	SERIAL No.:
SPEC.:4000K	DIM.: L290mm*W45mm*H60mm	
MFR.: NEKO LIGHTING AG		



C Range: 0 - 360DEG
 C Interval: 15.0DEG
 Test Speed: HIGH
 Temperature:25.3DEG
 Operators:Meng Yongjian
 Test Date:2017-06-13

γ Range: 0 - 90DEG
 γ Interval: 1.0DEG
 Test System:EVERFINE GO-2000B_V1 SYSTEM V2.0.288
 Humidity:52%
 Test Distance:5.850m [K=1.0000]
 Remarks:

Planar Illuminance Curve



C Range: 0 - 360DEG
 C Interval: 15.0DEG
 Test Speed: HIGH
 Temperature: 25.3DEG
 Operators: Meng Yongjian
 Test Date: 2017-06-13

γ Range: 0 - 90DEG
 γ Interval: 1.0DEG
 Test System: EVERFINE GO-2000B_V1 SYSTEM V2.0.288
 Humidity: 52%
 Test Distance: 5.850m [K=1.0000]
 Remarks:

LUMINOUS DISTRIBUTION INTENSITY DATA

Test:U:220.7V I:0.1179A P:25.05W PF:0.9632 Lamp Flux:1024.4x1 lm		
NAME: FG10-22W-840	TYPE:Downlight	SERIAL No.:
SPEC.:4000K	DIM.: L290mm*W45mm*H60mm	
MFR.: NEKO LIGHTING AG		

Table--1 UNIT: cd

C(DEG) γ (DEG)	0	15	30	45	60	75	90	105	120	135	150	165	180	195	210	225	240	255	270
0	666	664	662	660	658	657	656	655	654	653	652	651	666	664	662	660	658	657	656
5	659	657	655	654	653	652	650	649	647	645	643	642	657	655	654	653	653	653	652
10	635	634	634	636	637	637	636	634	630	625	620	616	631	629	632	634	637	638	639
15	591	593	597	605	610	614	613	610	602	592	579	571	583	583	592	601	610	614	617
20	523	529	542	561	573	581	581	577	563	544	519	502	510	515	533	554	573	582	586
25	434	444	468	502	527	541	542	536	515	482	442	416	420	427	456	492	525	542	548
30	345	357	385	431	472	495	499	490	457	408	359	331	332	340	373	418	469	496	505
35	264	276	304	356	411	446	452	439	394	333	282	254	252	261	294	342	408	446	458
40	192	204	231	282	346	395	404	387	327	262	212	185	183	191	223	270	340	393	408
45	131	142	167	215	280	341	354	332	262	198	151	128	124	132	160	206	275	339	358
50	81.7	89.8	112	156	217	287	304	277	202	141	100.0	79.6	76.6	83.3	107	148	213	284	308
55	41.6	48.5	66.8	104	161	234	255	222	147	92.1	57.6	41.3	38.3	43.6	63.2	97.8	158	230	259
60	9.89	15.4	30.0	60.0	110	180	207	168	98.5	51.6	23.8	10.5	7.54	11.9	27.9	55.9	107	176	209
65	1.60	1.26	1.84	24.9	64.9	128	160	116	56.1	19.0	1.17	1.31	1.70	1.11	1.13	22.1	63.2	123	162
70	1.97	1.41	1.11	1.15	27.8	79.3	114	70.9	22.1	1.03	1.06	1.38	1.88	1.08	0.89	0.97	27.3	77.4	115
75	2.24	1.62	1.11	0.95	1.44	39.3	69.7	33.0	1.07	0.84	0.90	1.39	1.88	1.08	0.82	0.78	1.20	38.0	70.9
80	2.22	1.71	1.08	0.86	0.89	9.36	30.5	6.16	0.82	0.73	0.78	1.27	1.79	0.98	0.73	0.66	0.67	9.02	31.7
85	0.27	0.34	0.54	0.65	0.72	0.89	2.95	0.84	0.65	0.54	0.39	0.25	0.15	0.23	0.32	0.46	0.48	0.69	3.46
90	0.32	0.76	0.61	0.49	0.57	0.71	0.25	0.67	0.49	0.47	0.55	0.78	0.31	0.60	0.45	0.31	0.35	0.50	0.22

C Range: 0 - 360DEG γ Range: 0 - 90DEG
 C Interval: 15.0DEG γ Interval: 1.0DEG
 Test Speed: HIGH Test System:EVERFINE GO-2000B_V1 SYSTEM V2.0.288
 Temperature:25.3DEG Humidity:52%
 Operators:Meng Yongjian Test Distance:5.850m [K=1.0000]
 Test Date:2017-06-13 Remarks:

LUMINOUS DISTRIBUTION INTENSITY DATA

Test:U:220.7V I:0.1179A P:25.05W PF:0.9632 Lamp Flux:1024.4x1 lm		
NAME: FG10-22W-840	TYPE:Downlight	SERIAL No.:
SPEC.:4000K	DIM.: L290mm*W45mm*H60mm	
MFR.: NEKO LIGHTING AG		

Table--2

UNIT: cd

C(DEG) \ γ (DEG)	285	300	315	330	345													
0	655	654	653	652	651													
5	651	649	648	646	645													
10	637	634	630	626	622													
15	614	608	599	591	582													
20	582	573	555	537	519													
25	542	527	497	464	436													
30	496	472	425	382	350													
35	447	411	350	302	270													
40	394	344	277	230	199													
45	339	279	211	166	138													
50	284	216	152	111	87.8													
55	230	160	101	66.0	47.0													
60	175	108	57.6	29.9	14.7													
65	123	63.9	23.2	1.89	1.11													
70	76.2	27.3	1.00	0.95	1.18													
75	36.9	1.14	0.80	0.88	1.30													
80	8.05	0.68	0.66	0.78	1.32													
85	0.71	0.51	0.48	0.43	0.29													
90	0.51	0.40	0.30	0.35	0.48													

C Range: 0 - 360DEG
 C Interval: 15.0DEG
 Test Speed: HIGH
 Temperature:25.3DEG
 Operators:Meng Yongjian
 Test Date:2017-06-13

γ Range: 0 - 90DEG
 γ Interval: 1.0DEG
 Test System:EVERFINE GO-2000B_V1 SYSTEM V2.0.288
 Humidity:52%
 Test Distance:5.850m [K=1.0000]
 Remarks:

Photometric Data Table [cd]

G/C	0.0	15.0	30.0	45.0	60.0	75.0	90.0	105.0	120.0	135.0
0.0	666.0	663.8	661.9	660.1	658.5	657.2	655.9	654.8	653.7	652.9
3.0	663.6	661.6	659.5	658.0	656.4	655.2	653.8	652.5	651.0	649.9
6.0	655.3	653.7	651.9	651.5	650.4	649.8	648.3	646.9	644.4	642.5
9.0	640.9	640.0	639.2	640.5	640.6	641.2	639.7	637.9	633.9	630.4
12.0	619.7	620.1	621.0	625.0	627.1	629.1	627.8	625.5	619.7	613.6
15.0	590.8	592.8	597.0	604.9	609.9	613.7	612.9	609.8	601.6	591.9
18.0	552.7	557.4	566.3	580.2	589.0	595.3	594.8	591.0	579.8	565.2
21.0	506.1	514.4	528.3	550.3	564.6	573.9	573.9	569.2	554.3	532.8
24.0	452.6	462.4	484.6	515.2	537.0	549.6	550.5	544.7	525.2	495.5
27.0	398.5	409.7	434.8	476.3	506.0	523.3	525.2	518.0	492.7	453.8
30.0	345.3	357.2	385.3	431.4	472.4	495.5	498.6	489.6	457.2	408.3
33.0	295.2	306.9	335.9	385.6	436.2	466.2	470.9	459.7	420.6	362.5
36.0	248.5	260.4	289.1	340.6	399.1	436.0	442.3	428.9	380.8	317.9
39.0	205.7	217.3	245.5	296.4	359.2	405.2	413.5	397.4	340.7	275.5
42.0	166.6	177.5	204.7	254.5	319.3	373.7	384.1	365.1	301.1	235.4
45.0	131.4	141.8	167.1	215.5	280.4	341.3	354.0	332.0	262.2	198.1
48.0	100.3	109.0	133.0	178.9	242.2	308.6	324.2	298.6	225.2	163.1
51.0	72.96	80.82	102.3	145.1	205.7	276.1	294.5	266.4	190.5	130.9
54.0	48.92	56.07	75.04	113.4	171.7	244.0	265.2	233.4	157.9	101.3
57.0	28.08	34.38	50.88	85.19	139.8	212.1	236.0	200.7	127.1	74.98
60.0	9.889	15.39	30.03	60.01	109.8	179.8	207.0	168.1	98.48	51.62
63.0	1.433	1.378	11.81	37.94	82.03	148.5	178.3	136.4	72.29	31.13
66.0	1.680	1.281	1.190	18.85	56.55	117.2	150.4	106.6	48.58	13.45
69.0	1.893	1.373	1.122	2.405	34.41	88.30	123.2	79.45	28.21	1.114
72.0	2.096	1.494	1.109	1.030	15.88	62.39	95.88	54.64	11.09	0.9376
75.0	2.238	1.618	1.109	0.9488	1.445	39.32	69.74	33.03	1.072	0.8416
78.0	2.265	1.697	1.089	0.8962	0.9735	19.66	45.16	15.23	0.9035	0.7607
81.0	2.196	1.705	1.065	0.8394	0.8531	5.266	23.89	2.571	0.7875	0.6970
84.0	0.7676	1.210	0.9691	0.7295	0.7481	0.9505	6.942	0.8916	0.6869	0.5639
87.0	0.2167	0.2971	0.4200	0.4940	0.6432	0.8264	0.9449	0.7805	0.6037	0.4481
90.0	0.3214	0.7631	0.6144	0.4898	0.5707	0.7062	0.2536	0.6734	0.4876	0.4657
G/C	150.0	165.0	180.0	195.0	210.0	225.0	240.0	255.0	270.0	285.0
0.0	652.0	651.2	666.0	663.8	661.9	660.1	658.5	657.2	655.9	654.8
3.0	648.5	647.6	662.6	660.5	659.1	657.5	656.5	655.5	654.6	653.4
6.0	639.8	638.4	653.2	651.2	650.8	650.5	650.8	650.4	650.0	648.6
9.0	625.6	623.1	637.5	635.7	637.5	638.6	641.0	641.7	642.0	640.2
12.0	605.7	600.9	614.3	613.6	618.1	622.1	627.3	629.8	630.9	628.6
15.0	579.2	570.9	582.6	583.3	592.2	600.6	610.0	614.5	616.6	613.6
18.0	545.4	532.4	542.2	544.4	559.3	574.2	589.0	596.1	599.3	595.5
21.0	505.7	485.9	492.5	497.7	519.8	542.3	564.1	574.6	578.9	574.2
24.0	458.1	434.1	438.7	445.0	472.9	505.2	535.8	550.4	556.0	550.3
27.0	408.8	381.7	384.0	391.7	423.1	464.1	503.9	523.9	531.0	524.1
30.0	359.4	331.0	331.8	340.1	373.0	418.4	469.1	495.8	504.7	496.3
33.0	311.9	283.3	282.8	291.6	324.6	372.7	432.2	466.5	477.0	467.1
36.0	267.1	239.1	237.5	246.2	279.0	327.2	394.2	435.7	448.0	436.4
39.0	225.5	198.3	196.0	204.5	236.4	284.3	353.7	403.8	418.2	404.5
42.0	186.9	161.0	158.3	166.5	196.6	243.8	314.0	371.4	388.4	372.1
45.0	151.3	127.6	124.2	132.1	160.3	205.7	274.6	338.6	358.4	339.3
48.0	119.3	97.37	94.36	101.6	127.4	170.2	236.9	305.5	328.3	306.1
51.0	90.79	71.29	68.28	74.65	97.28	137.3	201.6	272.7	298.2	273.0
54.0	65.60	48.37	45.31	50.87	71.15	107.3	168.4	240.8	268.4	240.8
57.0	43.22	28.22	25.18	30.14	48.16	80.32	136.9	208.0	238.8	207.5
60.0	23.77	10.49	7.537	11.87	27.92	55.92	107.0	175.9	209.3	175.2
63.0	6.654	1.299	1.629	1.153	10.11	34.83	79.80	143.9	180.7	143.8
66.0	1.137	1.319	1.739	1.102	1.014	16.40	55.28	113.7	152.7	112.7
69.0	1.078	1.364	1.857	1.084	0.9180	1.244	33.81	86.06	124.4	84.89
72.0	1.047	1.395	1.902	1.084	0.8657	0.8772	15.60	60.55	96.82	59.46
75.0	0.8996	1.395	1.876	1.084	0.8241	0.7786	1.204	38.02	70.89	36.93
78.0	0.8003	1.390	1.823	1.052	0.7651	0.7043	0.7604	18.90	46.41	17.88
81.0	0.7546	1.361	1.768	0.9731	0.6993	0.6277	0.6314	5.059	25.10	4.117
84.0	0.6742	0.5222	0.4878	0.3943	0.6194	0.4813	0.5156	0.7506	7.737	0.7614
87.0	0.3544	0.2274	0.1179	0.1947	0.2447	0.3413	0.4240	0.6255	0.8897	0.6277
90.0	0.5532	0.7806	0.3083	0.6013	0.4504	0.3083	0.3476	0.5029	0.2165	0.5116
G/C	300.0	315.0	330.0	345.0						
0.0	653.7	652.9	652.0	651.2						
3.0	652.3	651.2	650.5	649.3						
6.0	647.2	645.2	643.6	641.7						
9.0	638.0	634.3	631.7	628.2						
12.0	625.1	619.2	614.2	608.7						
15.0	608.5	599.2	590.8	581.9						
18.0	588.3	574.6	560.8	546.9						
21.0	564.4	544.7	523.4	504.3						

C Range: 0 - 360DEG

C Interval: 15.0DEG

Test Speed: HIGH

Temperature: 25.3DEG

Operators: Meng Yongjian

Test Date: 2017-06-13

γ Range: 0 - 90DEG

γ Interval: 1.0DEG

Test System: EVERFINE GO-2000B_V1 SYSTEM V2.0.288

Humidity: 52%

Test Distance: 5.850m [K=1.0000]

Remarks:

Photometric Data Table [cd]

24.0	537.1	509.5	480.2	452.9
27.0	506.1	470.4	430.9	401.2
30.0	472.4	425.3	381.8	349.7
33.0	435.8	379.7	333.0	300.5
36.0	398.7	334.8	286.7	254.6
39.0	358.0	290.8	243.5	212.1
42.0	317.8	249.5	203.1	173.4
45.0	278.7	210.7	165.9	138.2
48.0	240.3	174.6	132.0	106.7
51.0	204.1	141.0	101.1	78.93
54.0	170.3	110.3	74.19	54.42
57.0	138.8	82.56	50.53	33.29
60.0	108.3	57.57	29.89	14.70
63.0	80.81	36.02	11.87	1.210
66.0	55.93	17.29	1.058	1.109
69.0	33.96	1.669	0.9684	1.161
72.0	15.48	0.8947	0.9423	1.229
75.0	1.141	0.8005	0.8785	1.299
78.0	0.7627	0.7240	0.7958	1.325
81.0	0.6446	0.6473	0.7737	1.312
84.0	0.5310	0.5319	0.6963	0.9568
87.0	0.4501	0.3656	0.2796	0.2407
90.0	0.4023	0.2974	0.3455	0.4832

C Range: 0 - 360DEG
 C Interval: 15.0DEG
 Test Speed: HIGH
 Temperature: 25.3DEG
 Operators: Meng Yongjian
 Test Date: 2017-06-13

γ Range: 0 - 90DEG
 γ Interval: 1.0DEG
 Test System: EVERFINE GO-2000B_V1 SYSTEM V2.0.288
 Humidity: 52%
 Test Distance: 5.850m [K=1.0000]
 Remarks: