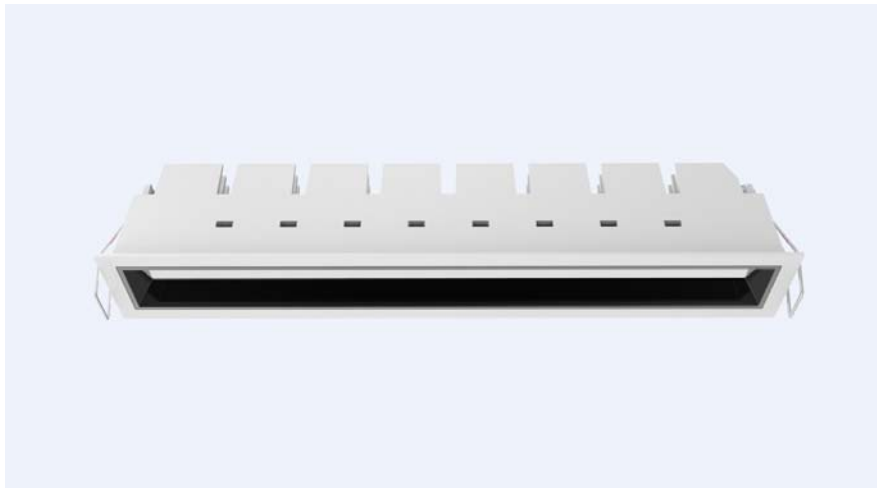


LED Downlight FUSION Series FG10-22W-940



Light Output Ratio:	100.0%	
Luminaire Power:	25.17 W	
SHR Nominal:	1.25	Calculated using the TM5
SHR Maximum:	1.25	fine grid method.

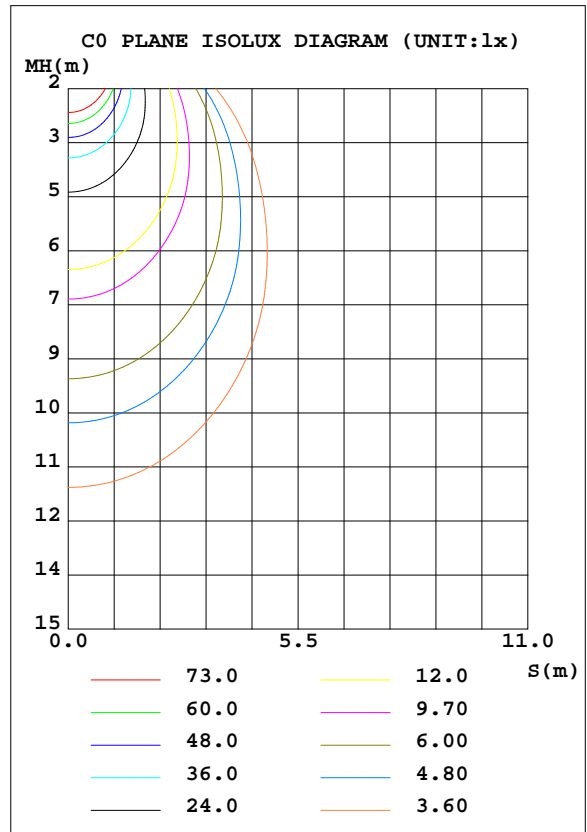
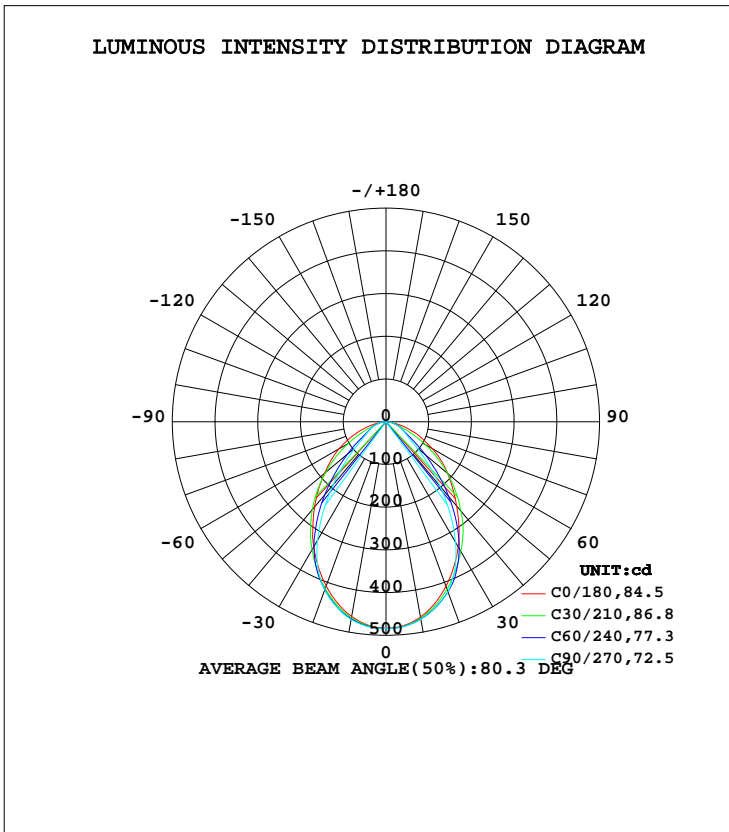
C Range: 0 - 360DEG
C Interval: 15.0DEG
Test Speed: HIGH
Temperature: 25.3DEG
Operators: Jason
Test Date: 2021-07-23

γ Range: 0 - 90DEG
 γ Interval: 0.5DEG
Test System: EVERFINE GO-2000B_V1 SYSTEM V2.0.362
Humidity: 58%
Test Distance: 8.967m [K=1.0000]
Remarks:

LUMINAIRE PHOTOMETRIC TEST REPORT

Test:U:220.2V I:0.1185A P:25.17W PF:0.9636 Freq:49.90Hz Lamp Flux:873.426x1 lm		
NAME: FG10-22W-940	TYPE:Downlight	SERIAL No.:
SPEC.:4000K	DIM.: L290mm*W45mm*H60mm	
MFR.: NEKO LIGHTING AG		

DATA OF LAMP		PHOTOMETRIC DATA Eff: 34.70 lm/W			
MODEL	OSRAM-4000K	I _{max} (cd)	484.0	S/MH(C0/180)	1.07
NOMINAL POWER(W)	24	LOR(%)	100.0	S/MH(C90/270)	1.05
RATED VOLTAGE(V)	220	TOTAL FLUX(lm)	873.43	η UP, DN(C0-180)	0.0,50.3
NOMINAL FLUX(lm)	873.426	CIE CLASS	DIRECT	η UP, DN(C180-360)	0.0,49.7
LAMPS INSIDE	1	η up(%)	0.0	CIBSE SHR NOM	1.25
TEST VOLTAGE(V)	220	η down(%)	100.0	CIBSE SHR MAX	1.25



C Range: 0 - 360DEG
 C Interval: 15.0DEG
 Test Speed: HIGH
 Temperature:25.3DEG
 Operators:Jason
 Test Date:2021-07-23

γ Range: 0 - 90DEG
 γ Interval: 0.5DEG
 Test System:EVERFINE GO-2000B_V1 SYSTEM V2.0.362
 Humidity:58%
 Test Distance:8.967m [K=1.0000]
 Remarks:

ZONAL FLUX DIAGRAM

ZONAL FLUX DIAGRAM:

γ	C0	C45	C90	C135	C180	C225	C270	C315	γ	Φ zone	Φ total	%lum, lamp
10	464.3	468.4	469.7	466.8	462.9	466.7	470.1	468.9	0- 10	45.42	45.42	5.2,5.2
20	410.1	421.8	423.8	419.2	409.4	416.5	418.9	419.7	10- 20	125.4	170.8	19.6,19.6
30	338.2	352.8	325.7	348.9	338.4	344.9	320.7	346.6	20- 30	175.3	346.1	39.6,39.6
40	257.6	257.7	196.5	253.8	259.9	251.9	191.8	250.7	30- 40	181.4	527.5	60.4,60.4
50	188.4	153.1	95.03	149.9	188.0	147.8	93.01	146.7	40- 50	148.3	675.8	77.4,77.4
60	124.1	70.25	51.50	68.00	127.7	66.89	49.00	66.54	50- 60	100.6	776.4	88.9,88.9
70	66.93	33.51	32.35	33.63	69.24	32.60	31.20	32.51	60- 70	60.39	836.8	95.8,95.8
80	19.90	13.84	15.86	13.84	20.97	13.44	15.43	13.62	70- 80	29.03	865.8	99.1,99.1
90	0.6794	0.3084	0.1829	0.3606	0.4129	0.4129	0.1934	0.3972	80- 90	7.605	873.4	100,100
100									90-100			
110									100-110			
120									110-120			
130									120-130			
140									130-140			
150									140-150			
160									150-160			
170									160-170			
180									170-180			
DEG	LUMINOUS INTENSITY:cd									UNIT:lm		

Conical surface Flux(90deg): 607.33 lm

%lum = 69.5%
%lamp = 69.5%

Conical surface Flux(120deg): 776.4 lm

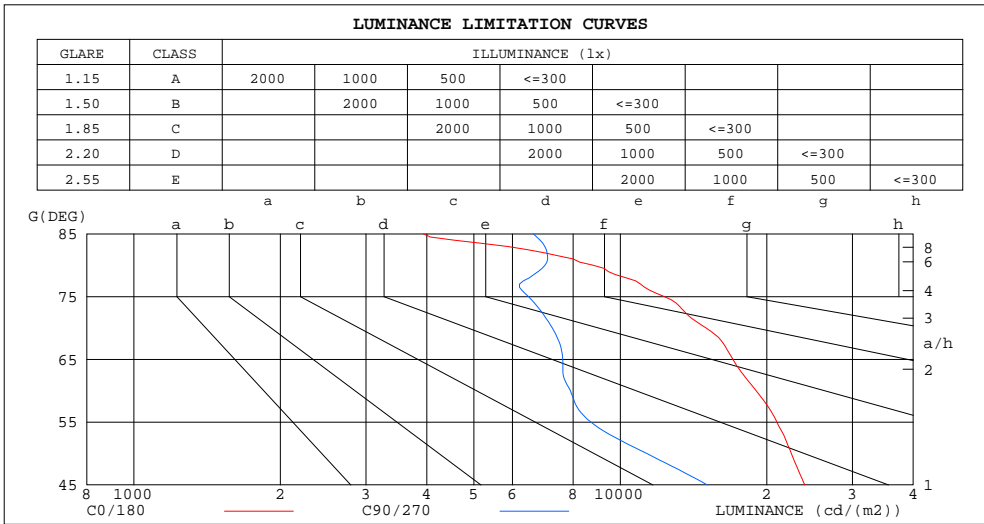
%lum = 88.9%
%lamp = 88.9%

C Range: 0 - 360DEG
C Interval: 15.0DEG
Test Speed: HIGH
Temperature:25.3DEG
Operators:Jason
Test Date:2021-07-23

γ Range: 0 - 90DEG
γ Interval: 0.5DEG
Test System:EVERFINE GO-2000B_V1 SYSTEM V2.0.362
Humidity:58%
Test Distance:8.967m [K=1.0000]
Remarks:

LUMINANCE LIMITATION CURVES

Test:U:220.2V I:0.1185A P:25.17W PF:0.9636 Freq:49.90Hz Lamp Flux:873.426x1 lm		
NAME: FG10-22W-940	TYPE:Downlight	SERIAL No.:
SPEC.:4000K	DIM.: L290mm*W45mm*H60mm	
MFR.: NEKO LIGHTING AG		



LUMINANCE cd/(m2)		
G(DEG)	C0/180	C90/270
85	3937	6622
80	8782	7000
75	12311	6472
70	14995	7249
65	17037	7616
60	19013	7893
55	20986	8702
50	22464	11329
45	23947	15093

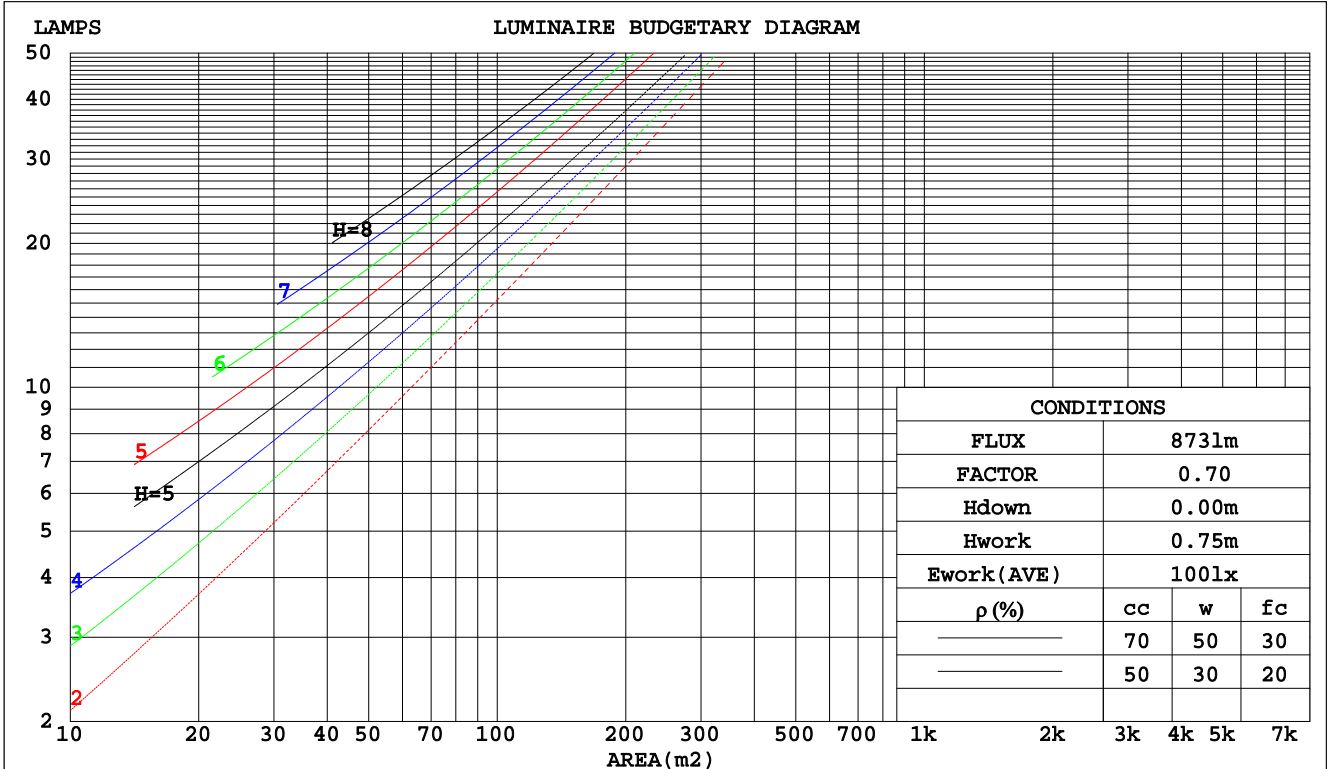
C Range: 0 - 360DEG
 C Interval: 15.0DEG
 Test Speed: HIGH
 Temperature: 25.3DEG
 Operators: Jason
 Test Date: 2021-07-23

γ Range: 0 - 90DEG
 γ Interval: 0.5DEG
 Test System: EVERFINE GO-2000B_V1 SYSTEM V2.0.362
 Humidity: 58%
 Test Distance: 8.967m [K=1.0000]
 Remarks:

CU AND LUMINAIRE BUDGETARY ESTIMATE DIAGRAM

Test:U:220.2V I:0.1185A P:25.17W PF:0.9636 Freq:49.90Hz Lamp Flux:873.426x1 lm		
NAME: FG10-22W-940	TYPE:Downlight	SERIAL No.:
SPEC.:4000K	DIM.: L290mm*W45mm*H60mm	
MFR.: NEKO LIGHTING AG		

pcc	80%			70%			50%			30%			10%			0
pw	50%	30%	10%	50%	30%	10%	50%	30%	10%	50%	30%	10%	50%	30%	10%	0
pfc	20%			20%			20%			20%			20%			0
RCR	RCR:Room Cavity Ratio															
	Coefficients of Utilization(CU)															
0.0	1.19	1.19	1.19	1.16	1.16	1.16	1.11	1.11	1.11	1.06	1.06	1.06	1.02	1.02	1.02	1.00
1.0	1.07	1.03	1.00	1.05	1.01	.98	1.00	.98	.95	.97	.94	.92	.93	.91	.90	.88
2.0	.95	.90	.85	.94	.88	.84	.90	.86	.82	.87	.83	.80	.84	.81	.78	.76
3.0	.86	.79	.73	.84	.78	.72	.81	.76	.71	.79	.74	.70	.76	.72	.69	.67
4.0	.77	.70	.64	.76	.69	.63	.74	.67	.63	.71	.66	.62	.69	.65	.61	.59
5.0	.70	.62	.56	.69	.62	.56	.67	.61	.56	.65	.59	.55	.63	.58	.54	.53
6.0	.64	.56	.50	.63	.56	.50	.61	.55	.50	.60	.54	.49	.58	.53	.49	.47
7.0	.59	.51	.45	.58	.51	.45	.57	.50	.45	.55	.49	.45	.54	.48	.44	.43
8.0	.54	.46	.41	.53	.46	.41	.52	.46	.41	.51	.45	.41	.50	.44	.40	.39
9.0	.50	.43	.38	.50	.42	.37	.48	.42	.37	.47	.41	.37	.46	.41	.37	.35
10.0	.47	.39	.34	.46	.39	.34	.45	.39	.34	.44	.38	.34	.43	.38	.34	.32



C Range: 0 - 360DEG
 C Interval: 15.0DEG
 Test Speed: HIGH
 Temperature: 25.3DEG
 Operators: Jason
 Test Date: 2021-07-23

γ Range: 0 - 90DEG
 γ Interval: 0.5DEG
 Test System: EVERFINE GO-2000B_V1 SYSTEM V2.0.362
 Humidity: 58%
 Test Distance: 8.967m [K=1.0000]
 Remarks:

WEC AND CCEC

Test:U:220.2V I:0.1185A P:25.17W PF:0.9636 Freq:49.90Hz Lamp Flux:873.426x1 lm		
NAME: FG10-22W-940	TYPE:Downlight	SERIAL No.:
SPEC.:4000K	DIM.: L290mm*W45mm*H60mm	
MFR.: NEKO LIGHTING AG		

ρcc	80%			70%			50%			30%			10%			0
ρw	50%	30%	10%	50%	30%	10%	50%	30%	10%	50%	30%	10%	50%	30%	10%	0
ρfc	20%			20%			20%			20%			20%			0
RCR	RCR:Room Cavity Ratio						Wall Exitance Coefficients(WEC)									
0.0																
1.0	.255	.145	.046	.248	.141	.045	.235	.135	.043	.223	.129	.041	.212	.123	.040	
2.0	.244	.134	.041	.238	.131	.040	.227	.126	.039	.216	.121	.038	.207	.117	.037	
3.0	.230	.122	.037	.224	.120	.036	.215	.116	.035	.205	.113	.035	.197	.109	.034	
4.0	.215	.112	.033	.211	.110	.033	.202	.107	.032	.194	.104	.031	.186	.101	.031	
5.0	.202	.103	.030	.198	.101	.030	.190	.099	.029	.183	.096	.029	.176	.094	.028	
6.0	.189	.095	.027	.186	.094	.027	.179	.092	.027	.172	.090	.026	.166	.088	.026	
7.0	.178	.088	.025	.175	.087	.025	.169	.085	.025	.163	.083	.024	.157	.082	.024	
8.0	.168	.082	.023	.165	.081	.023	.159	.080	.023	.154	.078	.023	.149	.077	.022	
9.0	.158	.077	.021	.156	.076	.021	.151	.075	.021	.146	.073	.021	.142	.072	.021	
10.0	.150	.072	.020	.148	.071	.020	.143	.070	.020	.139	.069	.020	.135	.068	.019	

ρcc	80%			70%			50%			30%			10%			0
ρw	50%	30%	10%	50%	30%	10%	50%	30%	10%	50%	30%	10%	50%	30%	10%	0
ρfc	20%			20%			20%			20%			20%			0
RCR	RCR:Room Cavity Ratio						Ceiling Cavity Exitance Coefficients(CCEC)									
0.0	.190	.190	.190	.163	.163	.163	.111	.111	.111	.064	.064	.064	.020	.020	.020	
1.0	.177	.157	.139	.151	.134	.119	.103	.092	.083	.059	.054	.048	.019	.017	.016	
2.0	.166	.132	.104	.142	.114	.090	.097	.079	.063	.056	.046	.037	.018	.015	.012	
3.0	.157	.114	.080	.134	.098	.069	.092	.068	.049	.053	.040	.029	.017	.013	.009	
4.0	.148	.100	.063	.127	.087	.055	.088	.060	.039	.051	.035	.023	.016	.012	.008	
5.0	.141	.089	.051	.121	.077	.045	.083	.054	.032	.048	.032	.019	.016	.010	.006	
6.0	.134	.081	.043	.115	.070	.037	.079	.049	.026	.046	.029	.016	.015	.009	.005	
7.0	.128	.074	.036	.110	.064	.031	.076	.045	.022	.044	.026	.013	.014	.009	.004	
8.0	.122	.068	.031	.105	.059	.027	.072	.041	.019	.042	.024	.011	.014	.008	.004	
9.0	.116	.063	.027	.100	.055	.024	.069	.038	.017	.040	.023	.010	.013	.007	.003	
10.0	.111	.059	.024	.095	.051	.021	.066	.036	.015	.039	.021	.009	.013	.007	.003	

C Range: 0 - 360DEG
 C Interval: 15.0DEG
 Test Speed: HIGH
 Temperature:25.3DEG
 Operators:Jason
 Test Date:2021-07-23

γ Range: 0 - 90DEG
 γ Interval: 0.5DEG
 Test System:EVERFINE GO-2000B_V1 SYSTEM V2.0.362
 Humidity:58%
 Test Distance:8.967m [K=1.0000]
 Remarks:

UGR(Unified Glare Rating) Table

Test:U:220.2V I:0.1185A P:25.17W PF:0.9636 Freq:49.90Hz Lamp Flux:873.426x1 lm		
NAME: FG10-22W-940	TYPE:Downlight	SERIAL No.:
SPEC.:4000K	DIM.: L290mm*W45mm*H60mm	
MFR.: NEKO LIGHTING AG		

ceiling/cavity	0.7	0.7	0.5	0.5	0.3	0.7	0.7	0.5	0.5	0.3
walls	0.5	0.3	0.5	0.3	0.3	0.5	0.3	0.5	0.3	0.3
working plane	0.2	0.2	0.2	0.2	0.2	0.2	0.2	0.2	0.2	0.2
Room dimensions	Viewed crosswise					Viewed endwise				
x = 2H y = 2H	23.8	25.2	24.1	25.4	25.6	20.2	21.5	20.4	21.7	21.9
3H	25.0	26.2	25.3	26.4	26.6	20.9	22.1	21.1	22.3	22.5
4H	25.3	26.5	25.6	26.7	27.0	21.2	22.3	21.5	22.6	22.8
6H	25.5	26.5	25.8	26.8	27.1	21.5	22.5	21.8	22.8	23.1
8H	25.5	26.5	25.8	26.8	27.1	21.6	22.6	21.9	22.9	23.2
12H	25.4	26.4	25.8	26.7	27.0	21.7	22.7	22.0	23.0	23.3
4H 2H	23.8	25.0	24.1	25.2	25.5	20.7	21.8	21.0	22.1	22.3
3H	25.1	26.1	25.4	26.3	26.6	21.5	22.5	21.9	22.8	23.1
4H	25.5	26.4	25.9	26.7	27.0	21.9	22.9	22.3	23.2	23.5
6H	25.7	26.5	26.1	26.9	27.2	22.3	23.1	22.7	23.5	23.8
8H	25.8	26.5	26.2	26.9	27.2	22.5	23.3	22.9	23.7	24.0
12H	25.8	26.4	26.2	26.8	27.2	22.7	23.4	23.1	23.8	24.2
8H 4H	25.5	26.2	25.9	26.6	26.9	22.1	22.9	22.5	23.2	23.6
6H	25.8	26.4	26.2	26.8	27.2	22.7	23.3	23.1	23.7	24.1
8H	25.8	26.4	26.3	26.8	27.2	23.0	23.5	23.4	23.9	24.4
12H	25.9	26.3	26.3	26.8	27.2	23.2	23.7	23.7	24.1	24.6
12H 4H	25.4	26.1	25.9	26.5	26.9	22.1	22.8	22.6	23.2	23.6
6H	25.7	26.3	26.2	26.7	27.2	22.7	23.3	23.2	23.7	24.1
8H	25.8	26.3	26.3	26.7	27.2	23.0	23.5	23.5	24.0	24.4
Variations with the observer position at spacings:										
S = 1.0H	+ 0.5 / - 0.6					+ 0.7 / - 0.9				
1.5H	+ 0.2 / - 0.5					+ 0.5 / - 0.8				
2.0H	+ 0.8 / - 1.2					+ 1.0 / - 0.9				

CIE Pub.117, 873.4 lm Total Lamp Luminous Flux Correct (8log(F/F0) = -0.5)

C Range: 0 - 360DEG
 C Interval: 15.0DEG
 Test Speed: HIGH
 Temperature:25.3DEG
 Operators:Jason
 Test Date:2021-07-23

γ Range: 0 - 90DEG
 γ Interval: 0.5DEG
 Test System:EVERFINE GO-2000B_V1 SYSTEM V2.0.362
 Humidity:58%
 Test Distance:8.967m [K=1.0000]
 Remarks:

UTILIZATION FACTORS TABLE

Test:U:220.2V I:0.1185A P:25.17W PF:0.9636 Freq:49.90Hz Lamp Flux:873.426x1 lm		
NAME: FG10-22W-940	TYPE:Downlight	SERIAL No.:
SPEC.:4000K	DIM.: L290mm*W45mm*H60mm	
MFR.: NEKO LIGHTING AG		

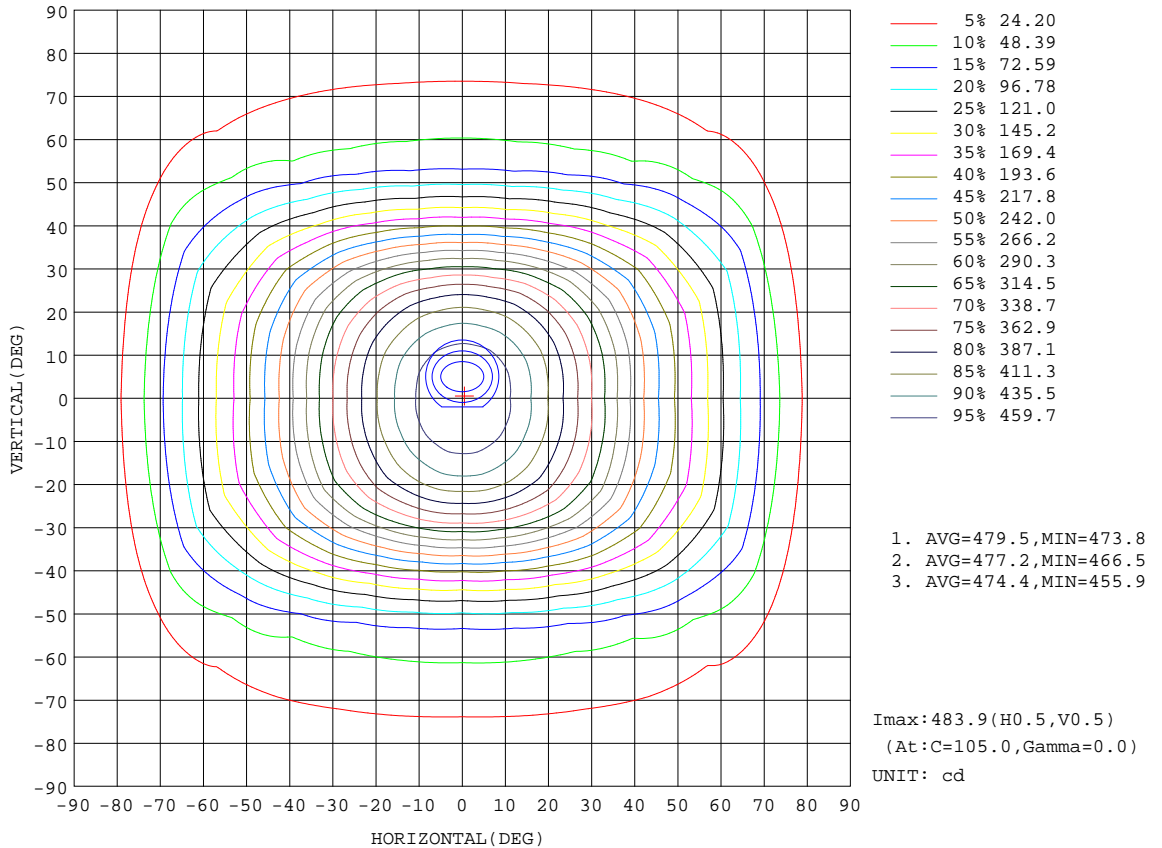
REFLECTANCE										
Ceiling	0.8	0.8	0.8	0.7	0.7	0.7	0.5	0.5	0.5	0
Walls	0.7	0.5	0.3	0.7	0.5	0.3	0.7	0.5	0.3	0
Working plane	0.2	0.2	0.2	0.2	0.2	0.2	0.2	0.2	0.2	0
ROOM INDEX	UTILIZATION FACTORS(PERCENT) $k(RI) \times RCR = 5$									
k = 0.60	67	57	51	66	57	51	65	56	51	45
0.80	76	67	61	76	66	60	74	66	60	54
1.00	84	75	69	83	74	69	81	75	68	62
1.25	90	82	76	89	81	76	87	80	75	69
1.50	95	87	81	93	86	81	90	84	80	73
2.00	100	93	88	99	92	87	95	90	86	79
2.50	103	97	92	101	96	91	98	93	89	82
3.00	106	100	96	104	99	95	100	96	93	85
4.00	109	105	101	107	103	99	103	100	97	89
5.00	111	107	104	109	105	102	104	102	99	91
ROOM INDEX	UF(total)									Direct
According to DIN EN 13032-2 2004			Suspended				SHRNOM = 1.25			

C Range: 0 - 360DEG
 C Interval: 15.0DEG
 Test Speed: HIGH
 Temperature:25.3DEG
 Operators:Jason
 Test Date:2021-07-23

γ Range: 0 - 90DEG
 γ Interval: 0.5DEG
 Test System:EVERFINE GO-2000B_V1 SYSTEM V2.0.362
 Humidity:58%
 Test Distance:8.967m [K=1.0000]
 Remarks:

ISOCANDELA DIAGRAM

Test:U:220.2V I:0.1185A P:25.17W PF:0.9636 Freq:49.90Hz Lamp Flux:873.426x1 lm		
NAME: FG10-22W-940	TYPE:Downlight	SERIAL No.:
SPEC.:4000K	DIM.: L290mm*W45mm*H60mm	
MFR.: NEKO LIGHTING AG		



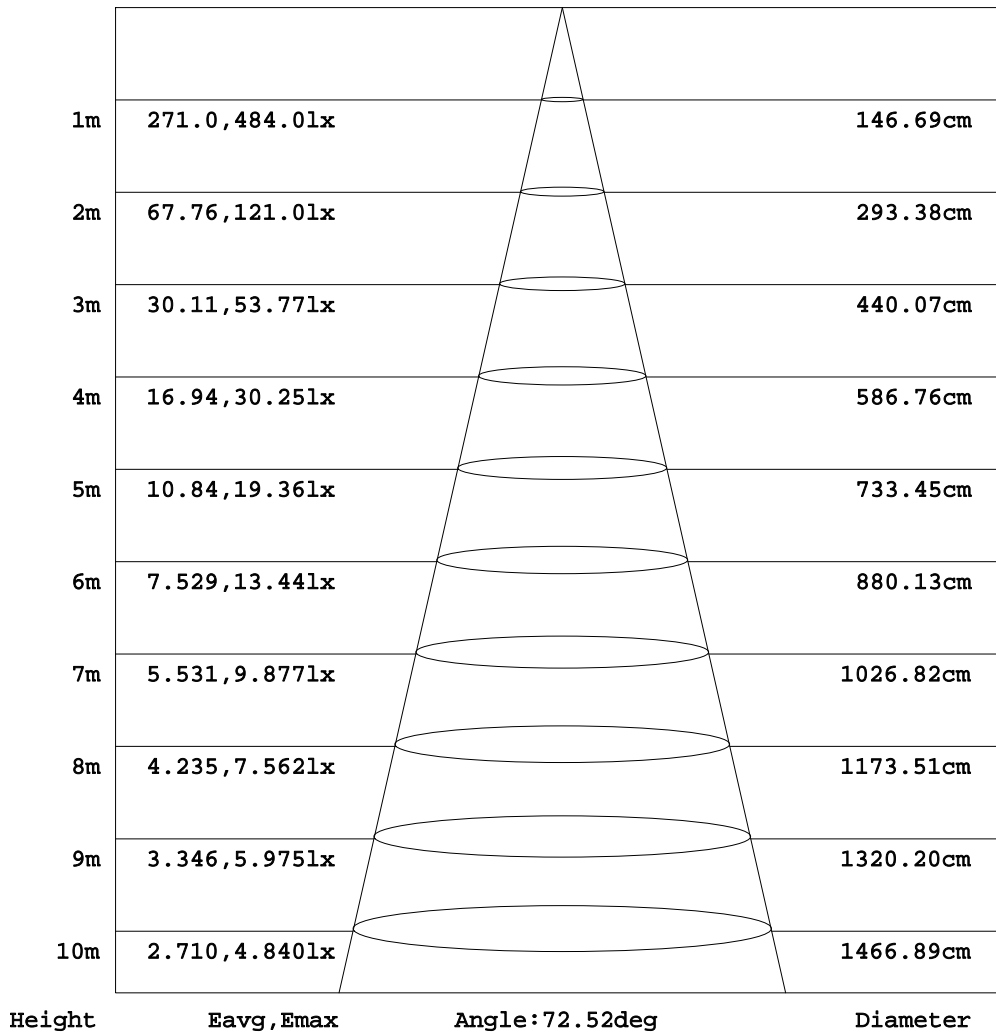
C Range: 0 - 360DEG
C Interval: 15.0DEG
Test Speed: HIGH
Temperature: 25.3DEG
Operators: Jason
Test Date: 2021-07-23

γ Range: 0 - 90DEG
γ Interval: 0.5DEG
Test System: EVERFINE GO-2000B_V1 SYSTEM V2.0.362
Humidity: 58%
Test Distance: 8.967m [K=1.0000]
Remarks:

AAI Figure

Test:U:220.2V I:0.1185A P:25.17W PF:0.9636 Freq:49.90Hz Lamp Flux:873.426x1 lm		
NAME: FG10-22W-940	TYPE:Downlight	SERIAL No.:
SPEC.:4000K	DIM.: L290mm*W45mm*H60mm	
MFR.: NEKO LIGHTING AG		

Flux out:466.2 lm



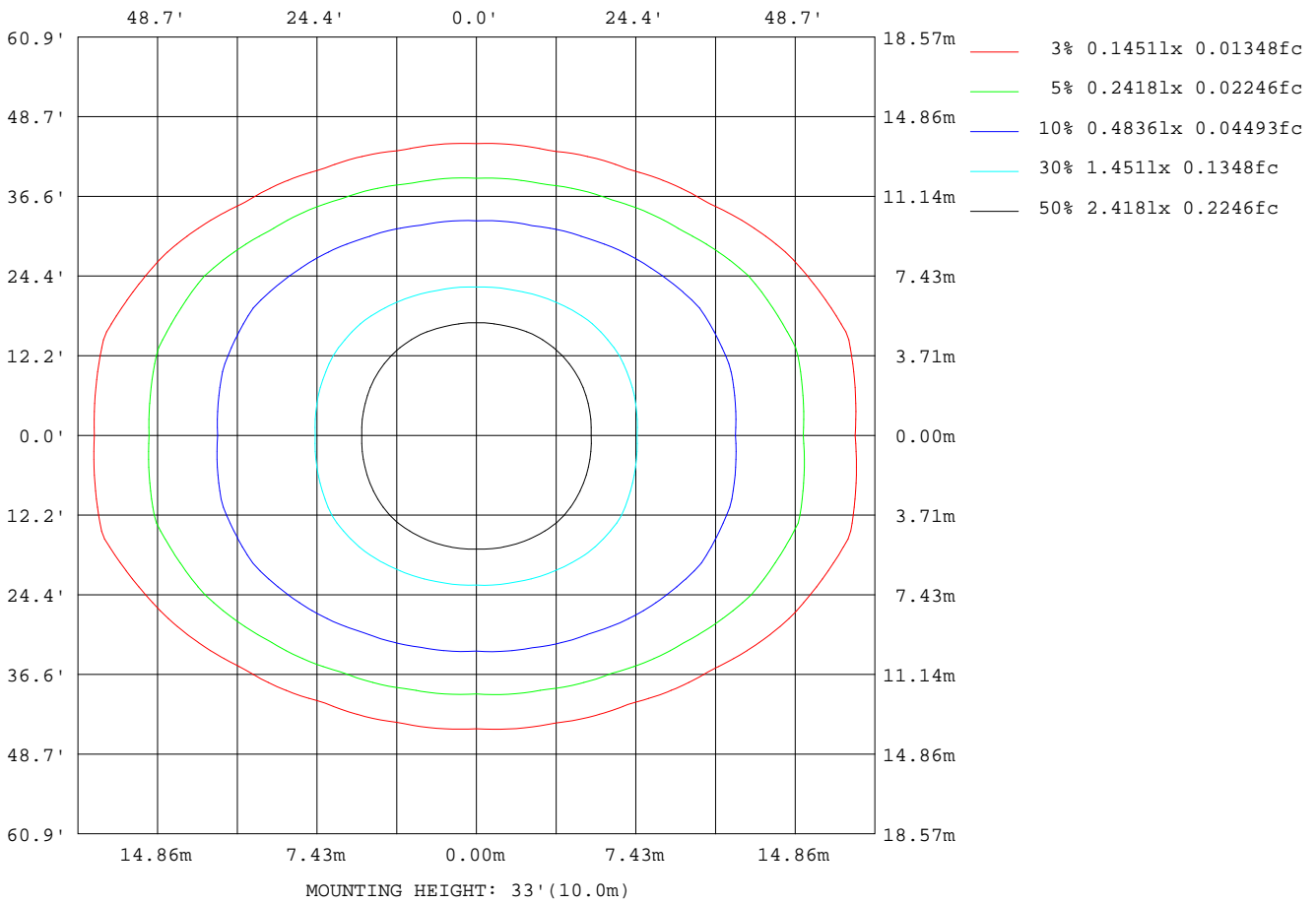
Note:The Curves indicate the illuminated area and the average illumination when the luminaire is at different distance.

C Range: 0 - 360DEG
C Interval: 15.0DEG
Test Speed: HIGH
Temperature:25.3DEG
Operators:Jason
Test Date:2021-07-23

γ Range: 0 - 90DEG
γ Interval: 0.5DEG
Test System:EVERFINE GO-2000B_V1 SYSTEM V2.0.362
Humidity:58%
Test Distance:8.967m [K=1.0000]
Remarks:

ISOLUX DIAGRAM

Test:U:220.2V I:0.1185A P:25.17W PF:0.9636 Freq:49.90Hz Lamp Flux:873.426x1 lm		
NAME: FG10-22W-940	TYPE:Downlight	SERIAL No.:
SPEC.:4000K	DIM.: L290mm*W45mm*H60mm	
MFR.: NEKO LIGHTING AG		



C Range: 0 - 360DEG
 C Interval: 15.0DEG
 Test Speed: HIGH
 Temperature:25.3DEG
 Operators:Jason
 Test Date:2021-07-23

γ Range: 0 - 90DEG
 γ Interval: 0.5DEG
 Test System:EVERFINE GO-2000B_V1 SYSTEM V2.0.362
 Humidity:58%
 Test Distance:8.967m [K=1.0000]
 Remarks:

LED Avg.L Report

Test:U:220.2V I:0.1185A P:25.17W PF:0.9636 Freq:49.90Hz Lamp Flux:873.426x1 lm		
NAME: FG10-22W-940	TYPE:Downlight	SERIAL No.:
SPEC.:4000K	DIM.: L290mm*W45mm*H60mm	
MFR.: NEKO LIGHTING AG		

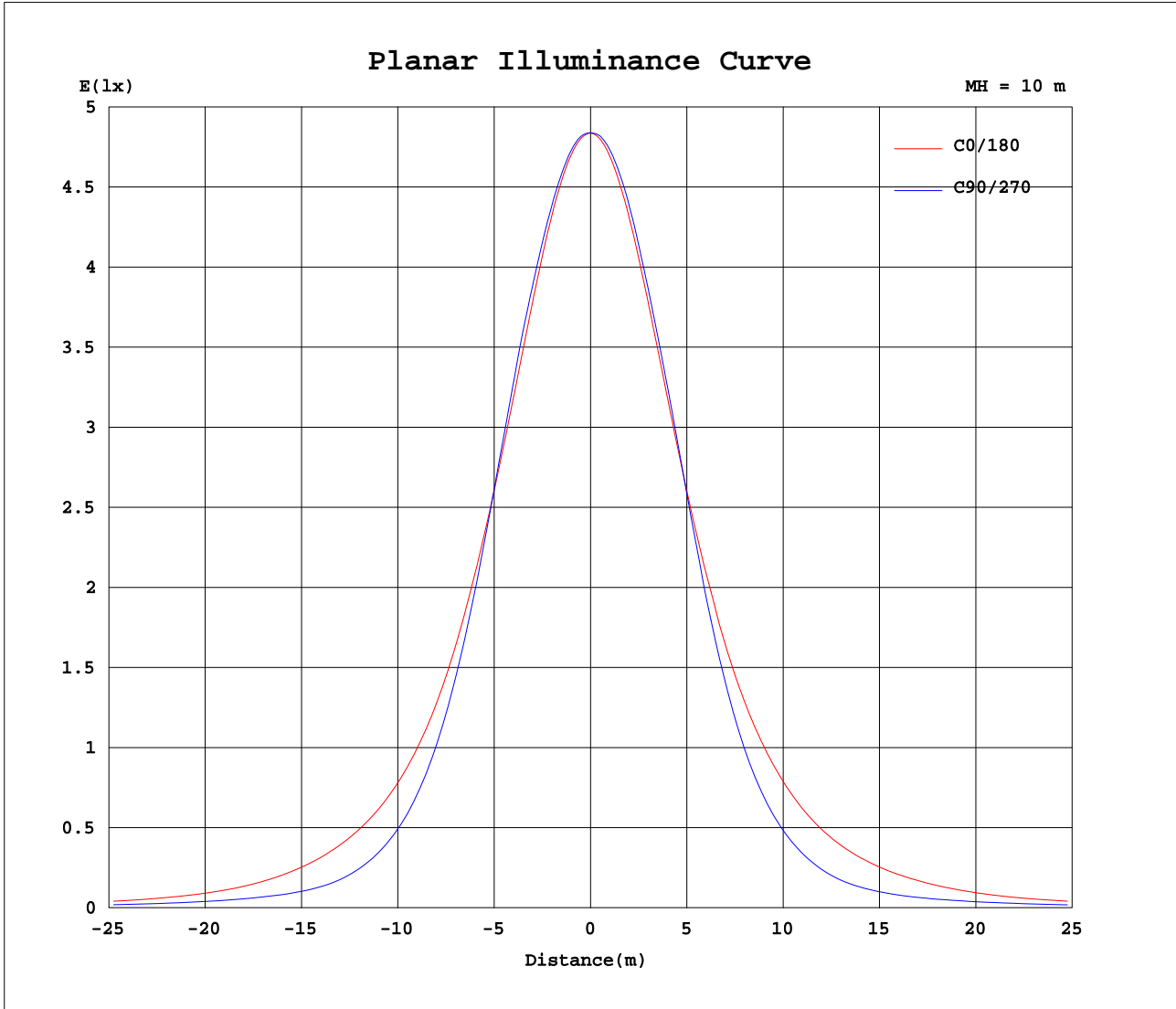
AvgL	cd/m2
L_0~180(65)av	17215
L_0~180(75)av	12537
L_0~180(85)av	4099
L_90~270(65)av	7486
L_90~270(75)av	6381
L_90~270(85)av	6435
L_45(65)av	8050
L_45(75)av	7021
L_45(85)av	6359

Standard: GB/T 29293-2012

C Range: 0 - 360DEG
C Interval: 15.0DEG
Test Speed: HIGH
Temperature:25.3DEG
Operators:Jason
Test Date:2021-07-23

γ Range: 0 - 90DEG
 γ Interval: 0.5DEG
Test System:EVERFINE GO-2000B_V1 SYSTEM V2.0.362
Humidity:58%
Test Distance:8.967m [K=1.0000]
Remarks:

Planar Illuminance Curve



C Range: 0 - 360DEG
 C Interval: 15.0DEG
 Test Speed: HIGH
 Temperature: 25.3DEG
 Operators: Jason
 Test Date: 2021-07-23

γ Range: 0 - 90DEG
 γ Interval: 0.5DEG
 Test System: EVERFINE GO-2000B_V1 SYSTEM V2.0.362
 Humidity: 58%
 Test Distance: 8.967m [K=1.0000]
 Remarks:

LUMINOUS DISTRIBUTION INTENSITY DATA

Test:U:220.2V I:0.1185A P:25.17W PF:0.9636 Freq:49.90Hz Lamp Flux:873.426x1 lm		
NAME: FG10-22W-940	TYPE:Downlight	SERIAL No.:
SPEC.:4000K	DIM.: L290mm*W45mm*H60mm	
MFR.: NEKO LIGHTING AG		

Table--1 UNIT: cd

C(DEG) γ (DEG)	0	15	30	45	60	75	90	105	120	135	150	165	180	195	210	225	240	255	270
0	484	484	484	484	484	484	484	484	484	484	484	484	484	484	484	484	484	484	484
5	479	479	480	481	481	481	481	481	481	480	479	478	478	478	479	480	481	481	481
10	464	466	467	468	469	470	470	470	468	467	465	464	463	464	466	467	469	469	470
15	440	443	445	448	450	451	451	450	448	446	443	441	439	441	444	446	447	447	448
20	410	414	417	422	424	425	424	424	422	419	415	412	409	412	416	417	419	418	419
25	376	380	385	391	389	385	381	384	386	388	382	378	375	378	382	383	383	378	377
30	338	345	350	353	343	333	326	332	340	349	348	343	338	342	346	345	337	325	321
35	298	304	315	307	288	270	261	268	285	303	313	304	299	305	307	301	281	263	256
40	258	265	273	258	229	206	196	204	225	254	271	267	260	266	268	252	223	200	192
45	221	229	230	205	171	149	139	147	168	202	229	231	223	229	227	200	166	143	137
50	188	197	188	153	120	102	95.0	101	118	150	186	197	188	194	185	148	118	98.1	93.0
55	157	167	146	107	79.9	68.7	65.1	68.2	78.3	105	142	165	157	161	143	103	78.1	66.0	63.8
60	124	134	106	70.2	54.4	52.4	51.5	52.2	54.0	68.0	102	133	128	131	103	66.9	53.1	49.1	49.0
65	94.0	100	68.5	45.5	42.1	42.3	42.0	42.2	42.0	45.0	66.2	101	95.9	99.0	67.6	43.6	41.0	40.6	40.6
70	66.9	70.2	39.3	33.5	33.2	33.0	32.4	33.0	33.2	33.6	38.0	67.8	69.2	66.8	38.5	32.6	32.4	31.3	31.2
75	41.6	39.0	24.4	24.2	22.8	22.5	21.9	22.5	22.8	24.1	24.7	37.4	43.1	37.2	24.3	23.2	22.4	21.4	21.2
80	19.9	15.8	14.7	13.8	14.8	15.8	15.9	15.9	15.0	13.8	14.8	15.7	21.0	15.2	14.6	13.4	14.8	15.2	15.4
85	4.48	5.77	6.83	7.44	7.37	7.63	7.53	7.72	7.29	7.31	7.02	6.16	4.85	5.58	6.98	6.99	7.16	6.99	7.11
90	0.68	0.50	0.40	0.31	0.26	0.20	0.18	0.18	0.30	0.36	0.56	0.58	0.41	0.58	0.52	0.41	0.30	0.22	0.19

C Range: 0 - 360DEG
 C Interval: 15.0DEG
 Test Speed: HIGH
 Temperature:25.3DEG
 Operators:Jason
 Test Date:2021-07-23

γ Range: 0 - 90DEG
 γ Interval: 0.5DEG
 Test System:EVERFINE GO-2000B_V1 SYSTEM V2.0.362
 Humidity:58%
 Test Distance:8.967m [K=1.0000]
 Remarks:

LUMINOUS DISTRIBUTION INTENSITY DATA

Test:U:220.2V I:0.1185A P:25.17W PF:0.9636 Freq:49.90Hz Lamp Flux:873.426x1 lm		
NAME: FG10-22W-940	TYPE:Downlight	SERIAL No.:
SPEC.:4000K	DIM.: L290mm*W45mm*H60mm	
MFR.: NEKO LIGHTING AG		

Table--2

UNIT: cd

C(DEG) / γ (DEG)	285	300	315	330	345													
0	484	484	484	484	484													
5	481	481	481	481	479													
10	470	470	469	468	466													
15	448	449	448	447	443													
20	419	421	420	419	414													
25	379	385	385	385	380													
30	325	339	347	348	344													
35	263	282	301	307	305													
40	199	222	251	268	266													
45	142	165	198	226	229													
50	97.3	116	147	185	196													
55	65.5	77.1	102	143	164													
60	48.9	52.7	66.5	103	131													
65	40.4	40.8	43.5	66.2	99.0													
70	31.2	32.2	32.5	38.2	67.1													
75	21.3	22.4	23.3	24.3	35.9													
80	15.2	14.8	13.6	14.8	14.7													
85	6.91	7.29	7.19	7.16	5.76													
90	0.25	0.27	0.40	0.56	0.75													

C Range: 0 - 360DEG	γ Range: 0 - 90DEG
C Interval: 15.0DEG	γ Interval: 0.5DEG
Test Speed: HIGH	Test System:EVERFINE GO-2000B_V1 SYSTEM V2.0.362
Temperature:25.3DEG	Humidity:58%
Operators:Jason	Test Distance:8.967m [K=1.0000]
Test Date:2021-07-23	Remarks: