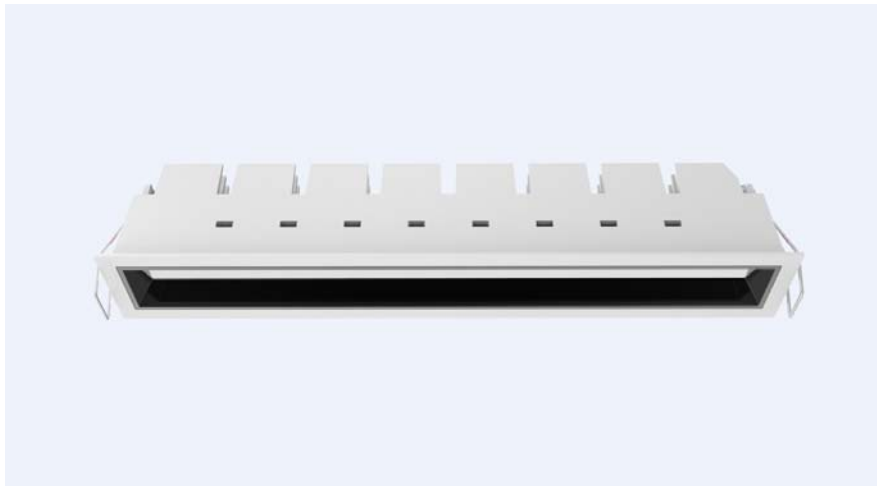


LED Downlight FUSION Series FG10-22W-830



Light Output Ratio:	100.0%	
Luminaire Power:	26 W	
SHR Nominal:	1.00	Calculated using the TM5
SHR Maximum:	1.05	fine grid method.

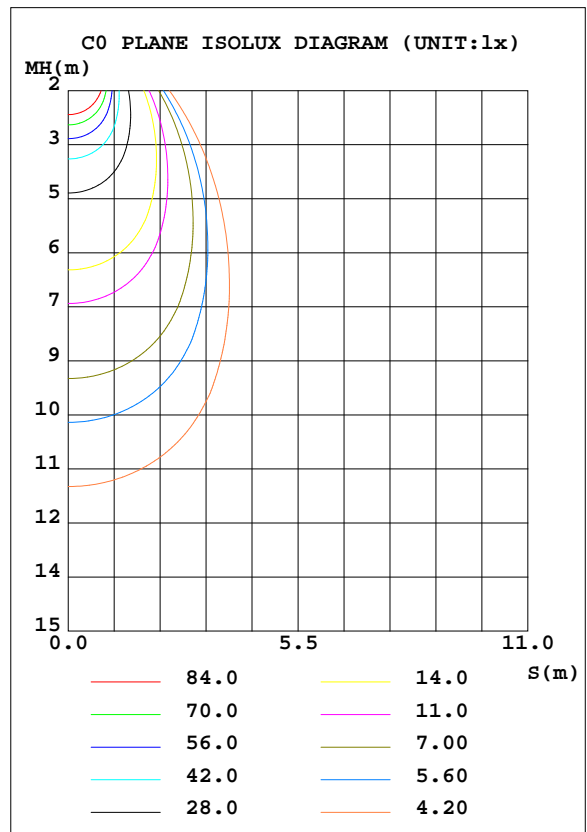
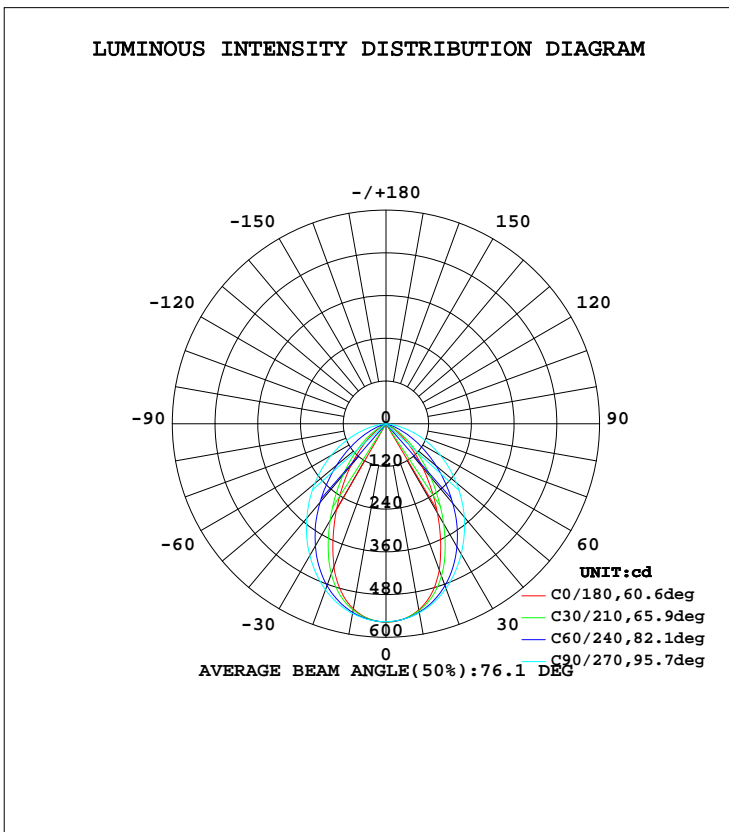
C Range: 0 - 360DEG  
C Interval: 15.0DEG  
Test Speed: HIGH  
Temperature: 25.3DEG  
Operators: Meng Yongjian  
Test Date: 2017-06-13

$\gamma$  Range: 0 - 90DEG  
 $\gamma$  Interval: 1.0DEG  
Test System: EVERFINE GO-2000B\_V1 SYSTEM V2.0.288  
Humidity: 52%  
Test Distance: 5.850m [K=1.0000]  
Remarks:

**LUMINAIRE PHOTOMETRIC TEST REPORT**

Test:U:220.7V I:0.1178A P:26.00W PF:0.9610 Lamp Flux:867.265x1 lm		
NAME: FG10-22W-830	TYPE:Downlight	SERIAL No.:
SPEC.:3000K	DIM.: L290mm*W45mm*H60mm	
MFR.: NEKO LIGHTING AG		

DATA OF LAMP		PHOTOMETRIC DATA				Eff: 33.36 lm/W
MODEL	CREE-3000K	I <sub>max</sub> (cd)	557.5	S/MH(C0/180)	0.89	
NOMINAL POWER(W)	24	LOR(%)	100.0	S/MH(C90/270)	1.15	
RATED VOLTAGE(V)	220	TOTAL FLUX(lm)	867.26	η UP, DN(C0-180)	0.0, 49.8	
NOMINAL FLUX(lm)	867.265	CIE CLASS	DIRECT	η UP, DN(C180-360)	0.0, 50.2	
LAMPS INSIDE	1	η up(%)	0.0	CIBSE SHR NOM	1.00	
TEST VOLTAGE(V)	220	η down(%)	100.0	CIBSE SHR MAX	1.05	



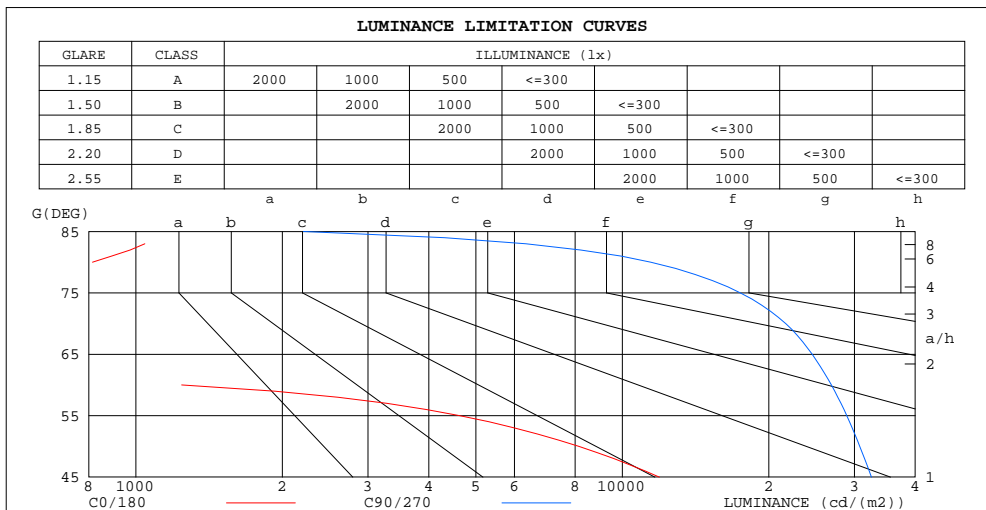
C Range: 0 - 360DEG  
 C Interval: 15.0DEG  
 Test Speed: HIGH  
 Temperature:25.3DEG  
 Operators:Meng Yongjian  
 Test Date:2017-06-13

γ Range: 0 - 90DEG  
 γ Interval: 1.0DEG  
 Test System:EVERFINE GO-2000B\_V1 SYSTEM V2.0.288  
 Humidity:52%  
 Test Distance:5.850m [K=1.0000]  
 Remarks:

**ZONAL FLUX DIAGRAM  
AND LUMINANCE LIMITATION CURVES**

**ZONAL FLUX DIAGRAM:**

$\gamma$	C0	C45	C90	C135	C180	C225	C270	C315	$\gamma$	$\Phi$ zone	$\Phi$ total	$\#lum, lamp$
10	531.2	536.0	539.1	532.1	528.0	534.4	541.4	535.8	0- 10	52.06	52.06	6,6
20	437.9	472.4	492.7	463.0	427.2	467.1	496.8	472.5	10- 20	141.9	194.0	22.4,22.4
30	288.9	363.4	422.7	347.7	278.1	353.3	427.8	361.8	20- 30	189.4	383.4	44.2,44.2
40	160.6	237.4	342.2	223.0	153.4	228.6	346.1	235.3	30- 40	186.1	569.5	65.7,65.7
50	68.31	131.3	258.0	120.0	64.27	125.2	261.4	129.3	40- 50	147.9	717.4	82.7,82.7
60	8.102	50.45	175.6	44.02	6.343	47.36	177.6	48.96	50- 60	93.87	811.3	93.5,93.5
70	1.598	0.9571	96.75	0.8764	1.563	0.8174	97.56	0.8501	60- 70	42.07	853.4	98.4,98.4
80	1.846	0.7170	25.91	0.6120	1.489	0.5512	26.83	0.5664	70- 80	12.60	866.0	99.8,99.8
90	0.2558	0.4154	0.2077	0.3914	0.2361	0.2558	0.1727	0.2536	80- 90	1.305	867.3	100,100
100									90-100			
110									100-110			
120									110-120			
130									120-130			
140									130-140			
150									140-150			
160									150-160			
170									160-170			
180									170-180			
DEG	LUMINOUS INTENSITY:cd									UNIT:lm		



LUMINANCE cd/(m2)		
G(DEG)	C0/180	C90/270
85	193	2208
80	814	11434
75	546	17477
70	358	21677
65	234	24562
60	1242	26905
55	4631	28937
50	8143	30756
45	11911	32520

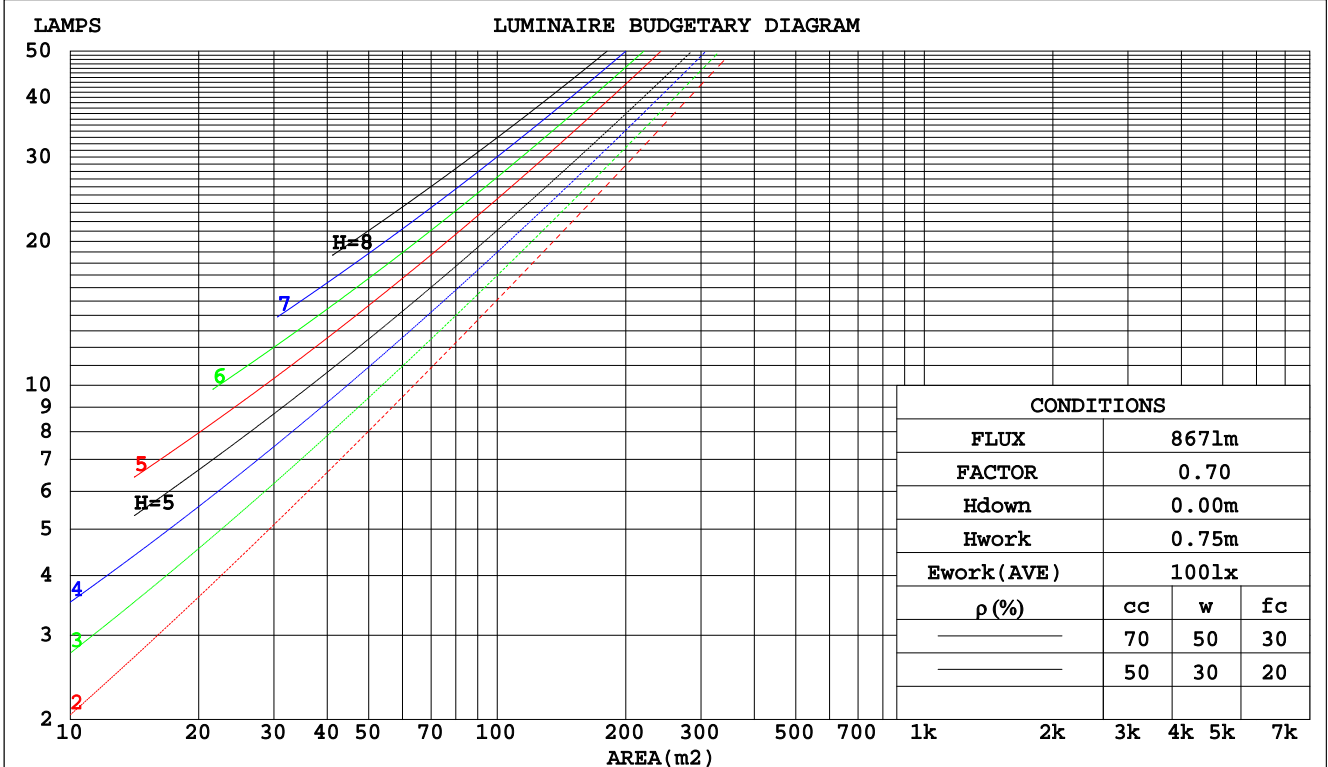
C Range: 0 - 360DEG  
C Interval: 15.0DEG  
Test Speed: HIGH  
Temperature:25.3DEG  
Operators:Meng Yongjian  
Test Date:2017-06-13

$\gamma$  Range: 0 - 90DEG  
 $\gamma$  Interval: 1.0DEG  
Test System:EVERFINE GO-2000B\_V1 SYSTEM V2.0.288  
Humidity:52%  
Test Distance:5.850m [K=1.0000]  
Remarks:

**CU AND LUMINAIRE BUDGETARY ESTIMATE DIAGRAM**

Test:U:220.7V I:0.1178A P:26.00W PF:0.9610 Lamp Flux:867.265x1 lm		
NAME: FG10-22W-830	TYPE:Downlight	SERIAL No.:
SPEC.:3000K	DIM.: L290mm*W45mm*H60mm	
MFR.: NEKO LIGHTING AG		

pcc	80%			70%			50%			30%			10%			0
	50%	30%	10%	50%	30%	10%	50%	30%	10%	50%	30%	10%	50%	30%	10%	0
pw																
pfc	20%			20%			20%			20%			20%			0
RCR	RCR:Room Cavity Ratio      Coefficients of Utilization(CU)															
0.0	1.19	1.19	1.19	1.16	1.16	1.16	1.11	1.11	1.11	1.06	1.06	1.06	1.02	1.02	1.02	1.00
1.0	1.08	1.05	1.02	1.06	1.03	1.00	1.02	.99	.97	.98	.96	.94	.94	.93	.92	.90
2.0	.98	.92	.88	.96	.91	.87	.92	.88	.85	.89	.86	.83	.86	.84	.81	.79
3.0	.88	.82	.77	.87	.81	.76	.84	.79	.75	.81	.77	.73	.79	.75	.72	.70
4.0	.80	.73	.67	.79	.72	.67	.77	.71	.66	.74	.69	.65	.72	.68	.65	.63
5.0	.73	.66	.60	.72	.65	.60	.70	.64	.59	.68	.63	.59	.67	.62	.58	.56
6.0	.67	.59	.54	.66	.59	.54	.64	.58	.53	.63	.57	.53	.61	.56	.53	.51
7.0	.62	.54	.49	.61	.54	.49	.59	.53	.48	.58	.52	.48	.57	.52	.48	.46
8.0	.57	.50	.44	.56	.49	.44	.55	.49	.44	.54	.48	.44	.53	.48	.44	.42
9.0	.53	.46	.41	.52	.45	.41	.51	.45	.41	.50	.44	.40	.49	.44	.40	.39
10.0	.49	.42	.38	.49	.42	.38	.48	.42	.37	.47	.41	.37	.46	.41	.37	.36



C Range: 0 - 360DEG  
 C Interval: 15.0DEG  
 Test Speed: HIGH  
 Temperature: 25.3DEG  
 Operators: Meng Yongjian  
 Test Date: 2017-06-13

γ Range: 0 - 90DEG  
 γ Interval: 1.0DEG  
 Test System: EVERFINE GO-2000B\_V1 SYSTEM V2.0.288  
 Humidity: 52%  
 Test Distance: 5.850m [K=1.0000]  
 Remarks:

WEC AND CCEC

Test:U:220.7V I:0.1178A P:26.00W PF:0.9610 Lamp Flux:867.265x1 lm		
NAME: FG10-22W-830	TYPE:Downlight	SERIAL No.:
SPEC.:3000K	DIM.: L290mm*W45mm*H60mm	
MFR.: NEKO LIGHTING AG		

ρcc	80%			70%			50%			30%			10%			0
ρw	50%	30%	10%	50%	30%	10%	50%	30%	10%	50%	30%	10%	50%	30%	10%	0
ρfc	20%			20%			20%			20%			20%			0
RCR	RCR:Room Cavity Ratio						Wall Exitance Coefficients(WEC)									
0.0																
1.0	.229	.130	.041	.223	.127	.040	.210	.120	.038	.198	.114	.037	.187	.108	.035	
2.0	.224	.123	.038	.218	.120	.037	.207	.115	.036	.196	.110	.034	.187	.106	.033	
3.0	.213	.113	.034	.208	.111	.034	.198	.108	.033	.189	.104	.032	.181	.100	.031	
4.0	.202	.105	.031	.197	.103	.031	.189	.100	.030	.181	.097	.029	.174	.094	.029	
5.0	.190	.097	.028	.186	.096	.028	.179	.093	.027	.172	.091	.027	.165	.088	.027	
6.0	.180	.090	.026	.176	.089	.026	.170	.087	.025	.163	.085	.025	.158	.083	.025	
7.0	.170	.084	.024	.167	.083	.024	.161	.081	.023	.155	.080	.023	.150	.078	.023	
8.0	.161	.079	.022	.158	.078	.022	.153	.076	.022	.148	.075	.022	.143	.073	.021	
9.0	.152	.074	.021	.150	.073	.020	.145	.072	.020	.141	.070	.020	.136	.069	.020	
10.0	.145	.069	.019	.142	.069	.019	.138	.068	.019	.134	.067	.019	.130	.065	.019	

ρcc	80%			70%			50%			30%			10%			0
ρw	50%	30%	10%	50%	30%	10%	50%	30%	10%	50%	30%	10%	50%	30%	10%	0
ρfc	20%			20%			20%			20%			20%			0
RCR	RCR:Room Cavity Ratio						Ceiling Cavity Exitance Coefficients(CCEC)									
0.0	.190	.190	.190	.163	.163	.163	.111	.111	.111	.064	.064	.064	.020	.020	.020	
1.0	.175	.157	.141	.150	.135	.121	.102	.093	.084	.059	.054	.049	.019	.017	.016	
2.0	.163	.132	.106	.140	.114	.092	.096	.079	.064	.055	.046	.038	.018	.015	.012	
3.0	.154	.114	.082	.132	.098	.071	.090	.068	.050	.052	.040	.030	.017	.013	.010	
4.0	.145	.100	.065	.125	.086	.057	.086	.060	.040	.050	.035	.024	.016	.011	.008	
5.0	.138	.089	.053	.118	.077	.046	.081	.054	.033	.047	.032	.019	.015	.010	.006	
6.0	.131	.080	.044	.112	.070	.038	.078	.049	.027	.045	.029	.016	.015	.009	.005	
7.0	.125	.073	.037	.107	.063	.032	.074	.044	.023	.043	.026	.014	.014	.009	.005	
8.0	.119	.067	.032	.102	.058	.028	.071	.041	.020	.041	.024	.012	.013	.008	.004	
9.0	.113	.062	.028	.098	.054	.024	.068	.038	.017	.039	.022	.010	.013	.007	.003	
10.0	.108	.058	.024	.093	.050	.021	.065	.035	.015	.038	.021	.009	.012	.007	.003	

C Range: 0 - 360DEG  
 C Interval: 15.0DEG  
 Test Speed: HIGH  
 Temperature:25.3DEG  
 Operators:Meng Yongjian  
 Test Date:2017-06-13

γ Range: 0 - 90DEG  
 γ Interval: 1.0DEG  
 Test System:EVERFINE GO-2000B\_V1 SYSTEM V2.0.288  
 Humidity:52%  
 Test Distance:5.850m [K=1.0000]  
 Remarks:

UGR(Unified Glare Rating) Table

Test:U:220.7V I:0.1178A P:26.00W PF:0.9610 Lamp Flux:867.265x1 lm		
NAME: FG10-22W-830	TYPE:Downlight	SERIAL No.:
SPEC.:3000K	DIM.: L290mm*W45mm*H60mm	
MFR.: NEKO LIGHTING AG		

ceiling/cavity	0.7	0.7	0.5	0.5	0.3	0.7	0.7	0.5	0.5	0.3
walls	0.5	0.3	0.5	0.3	0.3	0.5	0.3	0.5	0.3	0.3
working plane	0.2	0.2	0.2	0.2	0.2	0.2	0.2	0.2	0.2	0.2
Room dimensions	Viewed crosswise					Viewed endwise				
x = 2H y = 2H	17.5	18.8	17.8	19.0	19.1	24.4	25.6	24.6	25.8	26.0
3H	17.3	18.5	17.6	18.7	18.9	25.5	26.7	25.8	26.9	27.1
4H	17.2	18.3	17.5	18.6	18.8	25.9	26.9	26.2	27.2	27.4
6H	17.1	18.2	17.5	18.4	18.7	26.0	27.0	26.3	27.3	27.5
8H	17.1	18.1	17.4	18.4	18.6	26.0	27.0	26.3	27.2	27.5
12H	17.1	18.0	17.4	18.3	18.6	26.0	26.9	26.3	27.2	27.5
4H 2H	18.1	19.1	18.3	19.4	19.6	24.2	25.3	24.5	25.5	25.7
3H	17.9	18.8	18.2	19.1	19.4	25.3	26.3	25.7	26.6	26.9
4H	17.8	18.6	18.1	18.9	19.2	25.7	26.6	26.1	26.9	27.2
6H	17.7	18.4	18.1	18.8	19.1	25.9	26.6	26.3	27.0	27.3
8H	17.7	18.3	18.1	18.7	19.1	25.9	26.6	26.3	26.9	27.3
12H	17.6	18.2	18.0	18.6	19.0	25.9	26.5	26.3	26.9	27.3
8H 4H	17.7	18.4	18.1	18.8	19.2	25.6	26.3	26.0	26.6	27.0
6H	17.7	18.2	18.1	18.6	19.1	25.8	26.3	26.2	26.7	27.1
8H	17.6	18.1	18.1	18.6	19.0	25.8	26.2	26.2	26.7	27.1
12H	17.6	18.0	18.1	18.5	18.9	25.7	26.1	26.2	26.6	27.1
12H 4H	17.7	18.3	18.1	18.7	19.1	25.5	26.2	26.0	26.5	26.9
6H	17.6	18.1	18.1	18.5	19.0	25.7	26.2	26.2	26.6	27.1
8H	17.6	18.0	18.1	18.5	18.9	25.7	26.1	26.2	26.6	27.0
Variations with the observer position at spacings:										
S = 1.0H	+ 2.0 / - 5.0					+ 0.3 / - 0.3				
1.5H	+ 1.3 / - 2.4					+ 0.7 / - 1.2				
2.0H	+ 3.1 / -10.1					+ 1.7 / - 3.2				

CIE Pub.117 Corrected 867.3 lm Total Lamp Luminous Flux. (8log(F/F0) = -0.5)

C Range: 0 - 360DEG  
 C Interval: 15.0DEG  
 Test Speed: HIGH  
 Temperature:25.3DEG  
 Operators:Meng Yongjian  
 Test Date:2017-06-13

γ Range: 0 - 90DEG  
 γ Interval: 1.0DEG  
 Test System:EVERFINE GO-2000B\_V1 SYSTEM V2.0.288  
 Humidity:52%  
 Test Distance:5.850m [K=1.0000]  
 Remarks:

**UTILIZATION FACTORS TABLE**

Test:U:220.7V I:0.1178A P:26.00W PF:0.9610 Lamp Flux:867.265x1 lm		
NAME: FG10-22W-830	TYPE:Downlight	SERIAL No.:
SPEC.:3000K	DIM.: L290mm*W45mm*H60mm	
MFR.: NEKO LIGHTING AG		

REFLECTANCE										
Ceiling	0.8	0.8	0.8	0.7	0.7	0.7	0.5	0.5	0.5	0
Walls	0.7	0.5	0.3	0.7	0.5	0.3	0.7	0.5	0.3	0
Working plane	0.2	0.2	0.2	0.2	0.2	0.2	0.2	0.2	0.2	0
ROOM INDEX	UTILIZATION FACTORS(PERCENT) $k(RI) \times RCR = 5$									
k = 0.60	70	60	55	69	60	54	68	60	54	49
0.80	79	70	65	79	70	64	77	69	64	59
1.00	87	79	73	86	78	73	84	79	72	67
1.25	93	85	80	92	85	80	90	83	79	73
1.50	97	90	85	96	89	84	93	88	83	77
2.00	102	96	92	101	95	91	98	93	89	83
2.50	105	99	95	103	98	94	100	96	92	85
3.00	108	103	99	106	101	98	102	98	95	88
4.00	110	106	103	108	105	102	104	101	99	91
5.00	112	109	106	110	107	104	106	103	101	93
ROOM INDEX	UF(total)									Direct
According to DIN EN 13032-2 2004			Suspended				SHRNOM = 1.25			

C Range: 0 - 360DEG  
 C Interval: 15.0DEG  
 Test Speed: HIGH  
 Temperature:25.3DEG  
 Operators:Meng Yongjian  
 Test Date:2017-06-13

$\gamma$  Range: 0 - 90DEG  
 $\gamma$  Interval: 1.0DEG  
 Test System:EVERFINE GO-2000B\_V1 SYSTEM V2.0.288  
 Humidity:52%  
 Test Distance:5.850m [K=1.0000]  
 Remarks:

**ISOCANDELA DIAGRAM**

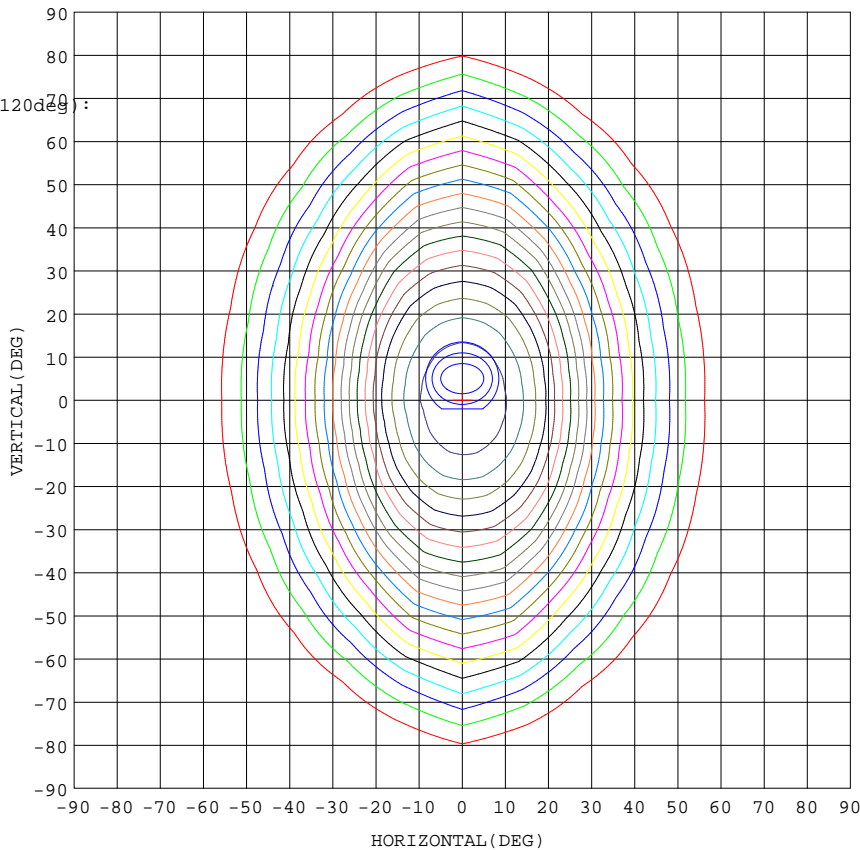
Test:U:220.7V I:0.1178A P:26.00W PF:0.9610 Lamp Flux:867.265x1 lm		
NAME: FG10-22W-830	TYPE:Downlight	SERIAL No.:
SPEC.:3000K	DIM.: L290mm*W45mm*H60mm	
MFR.: NEKO LIGHTING AG		

Conical surface Flux(90deg):

649.64 lm  
%lum = 74.9%  
%lamp = 74.9%

Conical surface Flux(120deg):

811.29 lm  
%lum = 93.5%  
%lamp = 93.5%



- 5% 27.87
- 10% 55.75
- 15% 83.62
- 20% 111.5
- 25% 139.4
- 30% 167.2
- 35% 195.1
- 40% 223.0
- 45% 250.9
- 50% 278.7
- 55% 306.6
- 60% 334.5
- 65% 362.4
- 70% 390.2
- 75% 418.1
- 80% 446.0
- 85% 473.9
- 90% 501.7
- 95% 529.6

1. AVG=550.3,MIN=544.2
2. AVG=547.9,MIN=536.4
3. AVG=544.7,MIN=527.9

I<sub>max</sub>:557.5(H0.0,V0.0)  
(At:C=0.0,Gamma=0.0)  
UNIT: cd

C Range: 0 - 360DEG  
C Interval: 15.0DEG  
Test Speed: HIGH  
Temperature:25.3DEG  
Operators:Meng Yongjian  
Test Date:2017-06-13

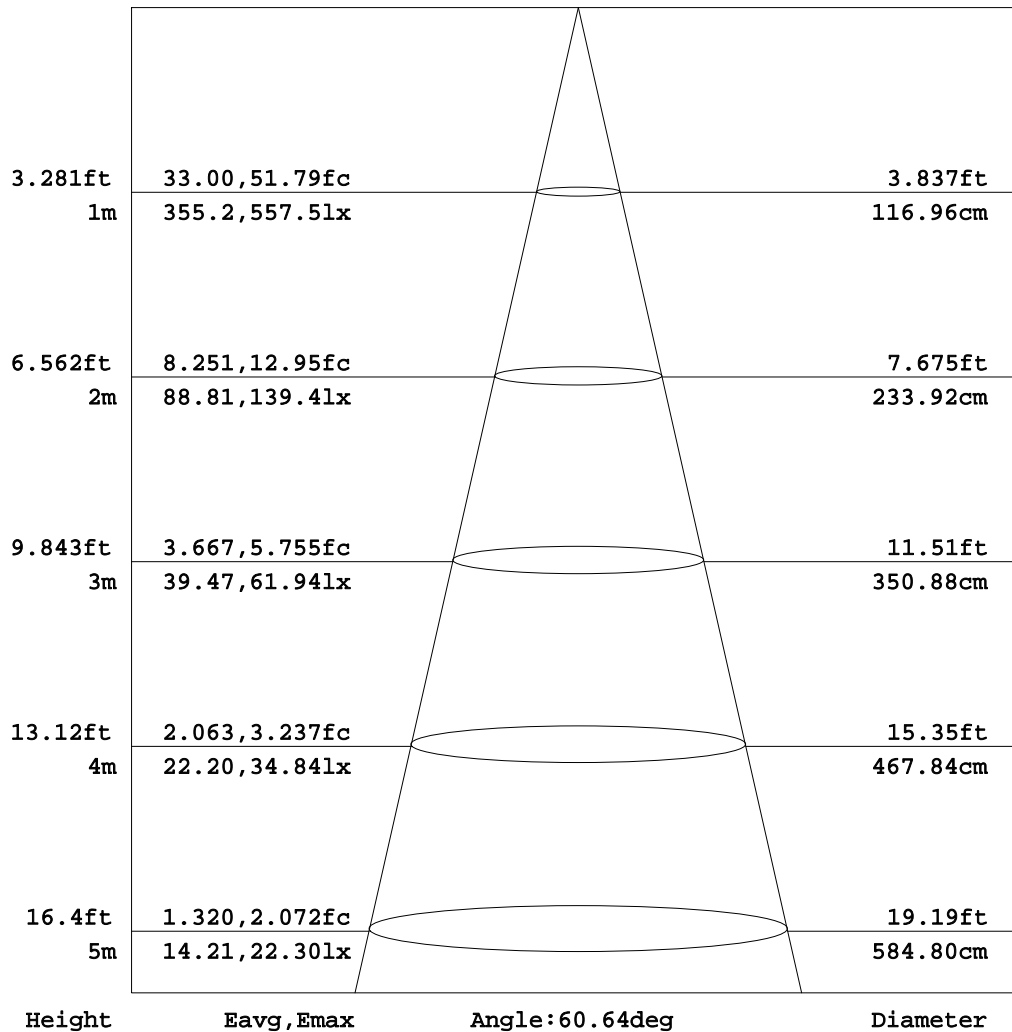
γ Range: 0 - 90DEG  
γ Interval: 1.0DEG  
Test System:EVERFINE GO-2000B\_V1 SYSTEM V2.0.288  
Humidity:52%  
Test Distance:5.850m [K=1.0000]  
Remarks:



**AAI Figure**

Test:U:220.7V I:0.1178A P:26.00W PF:0.9610 Lamp Flux:867.265x1 lm		
NAME: FG10-22W-830	TYPE:Downlight	SERIAL No.:
SPEC.:3000K	DIM.: L290mm*W45mm*H60mm	
MFR.: NEKO LIGHTING AG		

Flux out:402.9 lm



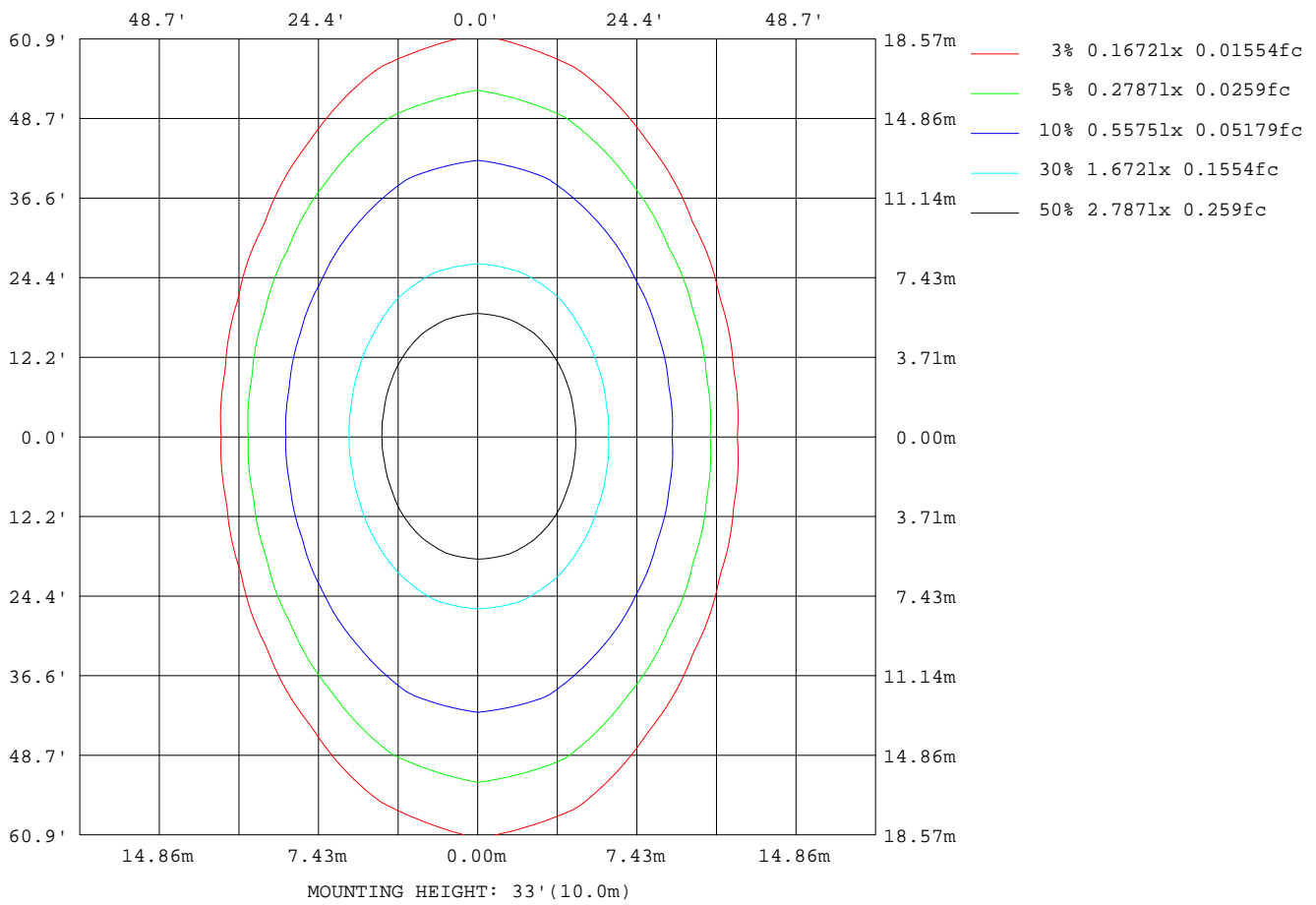
Note:The Curves indicate the illuminated area and the average illumination when the luminaire is at different distance.

C Range: 0 - 360DEG  
C Interval: 15.0DEG  
Test Speed: HIGH  
Temperature:25.3DEG  
Operators:Meng Yongjian  
Test Date:2017-06-13

γ Range: 0 - 90DEG  
γ Interval: 1.0DEG  
Test System:EVERFINE GO-2000B\_V1 SYSTEM V2.0.288  
Humidity:52%  
Test Distance:5.850m [K=1.0000]  
Remarks:

**ISOLUX DIAGRAM**

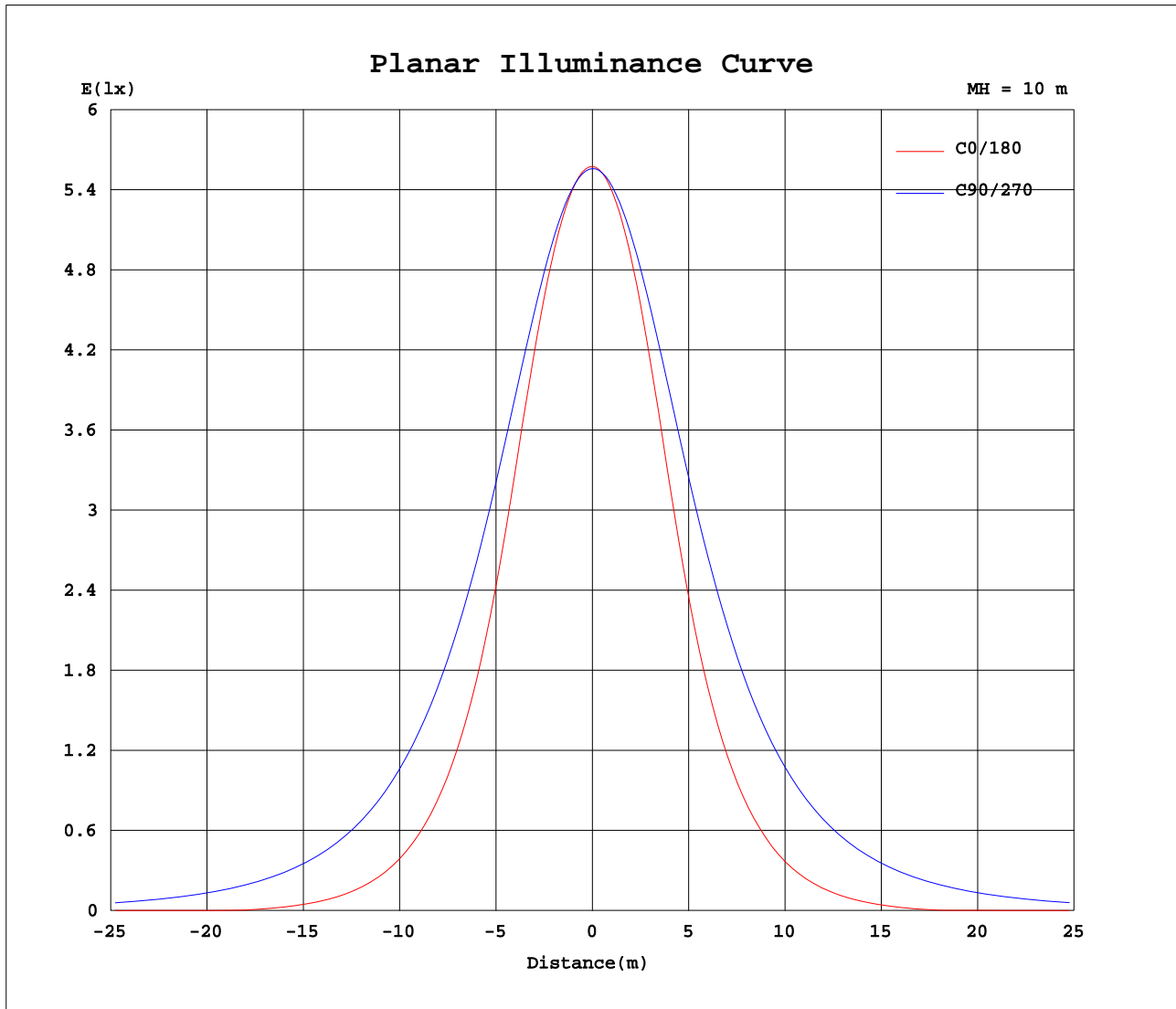
Test:U:220.7V I:0.1178A P:26.00W PF:0.9610 Lamp Flux:867.265x1 lm		
NAME: FG10-22W-830	TYPE:Downlight	SERIAL No.:
SPEC.:3000K	DIM.: L290mm*W45mm*H60mm	
MFR.: NEKO LIGHTING AG		



C Range: 0 - 360DEG  
C Interval: 15.0DEG  
Test Speed: HIGH  
Temperature:25.3DEG  
Operators:Meng Yongjian  
Test Date:2017-06-13

γ Range: 0 - 90DEG  
γ Interval: 1.0DEG  
Test System:EVERFINE GO-2000B\_V1 SYSTEM V2.0.288  
Humidity:52%  
Test Distance:5.850m [K=1.0000]  
Remarks:

Planar Illuminance Curve



C Range: 0 - 360DEG  
 C Interval: 15.0DEG  
 Test Speed: HIGH  
 Temperature: 25.3DEG  
 Operators: Meng Yongjian  
 Test Date: 2017-06-13

$\gamma$  Range: 0 - 90DEG  
 $\gamma$  Interval: 1.0DEG  
 Test System: EVERFINE GO-2000B\_V1 SYSTEM V2.0.288  
 Humidity: 52%  
 Test Distance: 5.850m [K=1.0000]  
 Remarks:





Photometric Data Table [cd]

G/C	0.0	15.0	30.0	45.0	60.0	75.0	90.0	105.0	120.0	135.0
0.0	557.5	557.1	556.8	556.5	556.3	556.1	555.9	555.8	555.6	555.5
3.0	555.4	555.2	554.8	554.8	554.5	554.5	554.1	553.9	553.3	553.0
6.0	548.4	548.5	548.4	549.2	549.4	549.9	549.5	549.1	547.7	546.6
9.0	536.4	537.1	537.7	539.9	541.1	542.6	542.2	541.4	538.9	536.4
12.0	518.7	520.3	522.5	526.8	529.7	532.3	532.1	530.9	526.7	522.2
15.0	494.4	497.4	502.1	509.8	515.1	519.3	519.4	517.6	511.4	503.7
18.0	462.4	467.5	476.4	488.9	497.5	503.7	504.2	501.6	492.9	481.0
21.0	423.3	431.3	444.3	463.7	476.8	485.5	486.5	483.2	471.2	453.5
24.0	378.5	387.7	407.4	434.0	453.5	465.0	466.6	462.3	446.6	421.8
27.0	333.4	343.5	365.5	401.2	427.3	442.7	445.2	439.6	419.0	386.5
30.0	288.9	299.5	323.9	363.4	398.9	419.1	422.7	415.5	389.0	347.7
33.0	247.0	257.4	282.5	324.7	368.3	394.3	399.1	390.2	357.8	308.7
36.0	207.8	218.3	243.1	286.8	336.9	368.8	375.0	364.1	324.0	270.8
39.0	172.1	182.1	206.3	249.5	303.1	342.8	350.5	337.4	289.9	234.7
42.0	139.4	148.9	172.1	214.2	269.5	316.0	325.6	309.9	256.2	200.7
45.0	109.9	118.3	140.5	181.5	236.6	288.7	300.1	281.9	223.1	168.8
48.0	83.88	91.32	111.7	150.6	204.4	261.0	274.8	253.5	191.8	139.2
51.0	60.79	67.65	85.92	121.6	173.5	233.4	249.7	226.1	162.3	111.2
54.0	40.81	46.91	62.77	95.50	144.9	206.2	224.9	198.2	134.4	86.36
57.0	23.33	28.74	42.70	71.68	118.0	179.3	200.1	170.4	108.3	63.98
60.0	8.102	12.77	25.15	50.45	92.71	152.0	175.6	142.9	83.88	44.02
63.0	1.164	1.121	9.800	31.85	69.20	125.0	151.3	115.3	61.37	26.58
66.0	1.359	1.050	0.9894	15.77	47.64	99.02	127.6	90.58	41.41	11.52
69.0	1.543	1.128	0.9337	1.957	28.95	74.59	104.5	67.54	24.05	0.9440
72.0	1.709	1.225	0.9206	0.8568	13.31	52.70	81.37	46.45	9.493	0.7912
75.0	1.843	1.336	0.9205	0.7914	1.196	33.19	59.03	28.08	0.9118	0.7170
78.0	1.867	1.410	0.9030	0.7411	0.8182	16.60	38.31	12.95	0.7722	0.6492
81.0	1.819	1.410	0.8813	0.7016	0.7175	4.409	20.31	2.171	0.6716	0.5900
84.0	0.6403	1.003	0.8072	0.6050	0.6300	0.7976	5.883	0.7539	0.5820	0.4721
87.0	0.1794	0.2403	0.3479	0.4131	0.5447	0.7018	0.8020	0.6646	0.5140	0.3760
90.0	0.2558	0.6275	0.5073	0.4154	0.4810	0.5663	0.2077	0.5685	0.4132	0.3914
G/C	150.0	165.0	180.0	195.0	210.0	225.0	240.0	255.0	270.0	285.0
0.0	555.2	555.1	557.5	557.1	556.8	556.5	556.3	556.1	555.9	555.8
3.0	552.3	552.0	554.7	554.4	554.6	554.5	554.7	554.7	554.8	554.6
6.0	544.9	544.2	546.9	546.7	547.6	548.5	549.8	550.4	551.0	550.5
9.0	532.9	531.3	533.7	533.7	536.4	538.5	541.5	543.2	544.2	543.5
12.0	515.9	512.4	514.4	515.2	520.2	524.7	530.1	533.1	534.8	533.6
15.0	493.5	486.8	487.8	489.8	498.4	506.7	515.5	520.2	522.7	520.9
18.0	464.8	454.1	454.0	457.3	470.7	484.5	497.8	504.7	508.0	505.5
21.0	431.1	414.7	412.3	417.9	437.6	457.6	476.7	486.5	490.8	487.6
24.0	390.6	370.6	367.4	373.8	398.1	426.4	452.9	466.0	471.3	467.2
27.0	348.7	325.9	321.7	329.1	356.3	391.8	426.0	443.7	450.1	445.0
30.0	306.6	282.7	278.1	285.8	314.1	353.3	396.6	420.0	427.8	421.3
33.0	266.2	242.1	237.1	245.1	273.4	314.8	365.5	395.1	404.4	396.6
36.0	228.0	204.3	199.2	207.0	235.1	276.5	333.4	369.1	379.8	370.6
39.0	192.5	169.5	164.4	172.0	199.2	240.2	299.3	342.0	354.6	343.5
42.0	159.5	137.9	132.7	140.0	165.8	206.1	265.7	314.7	329.2	316.0
45.0	129.2	108.7	104.1	111.1	135.0	173.9	232.3	286.9	303.8	288.1
48.0	102.0	83.32	79.13	85.48	106.9	144.0	200.4	258.9	278.4	260.0
51.0	77.63	60.99	57.24	62.60	82.02	116.2	170.6	231.2	252.8	231.8
54.0	55.89	41.42	38.01	42.79	60.02	90.82	142.7	204.2	227.6	204.5
57.0	36.96	24.17	21.10	25.38	40.62	67.89	115.6	176.4	202.5	176.2
60.0	20.39	9.050	6.343	10.01	23.56	47.36	90.67	149.2	177.6	148.8
63.0	5.773	1.100	1.349	0.9623	8.577	29.51	67.66	122.1	153.2	122.0
66.0	0.9689	1.122	1.446	0.9184	0.8436	13.95	46.85	96.51	129.3	95.65
69.0	0.9163	1.159	1.537	0.9030	0.7629	1.080	28.66	73.05	105.5	72.03
72.0	0.8922	1.187	1.579	0.9030	0.7214	0.7415	13.28	51.44	82.11	50.35
75.0	0.7682	1.183	1.561	0.9030	0.6886	0.6583	1.051	32.28	60.10	31.28
78.0	0.6866	1.178	1.517	0.8812	0.6383	0.5927	0.6424	16.07	39.33	15.10
81.0	0.6453	1.160	1.471	0.8178	0.5812	0.5250	0.5266	4.307	21.16	3.452
84.0	0.5756	0.4395	0.4096	0.3279	0.5129	0.4026	0.4305	0.6390	6.472	0.6411
87.0	0.3040	0.1880	0.0938	0.1641	0.2011	0.2866	0.3563	0.5315	0.7545	0.5337
90.0	0.4679	0.6647	0.2361	0.4985	0.3739	0.2558	0.2842	0.4220	0.1727	0.4351
G/C	300.0	315.0	330.0	345.0						
0.0	555.6	555.5	555.2	555.1						
3.0	554.4	554.1	553.9	553.4						
6.0	550.1	548.9	548.0	547.0						
9.0	542.3	539.7	537.9	535.5						
12.0	531.4	526.8	522.9	518.8						
15.0	517.2	509.8	503.0	495.9						
18.0	500.0	488.9	477.5	465.9						
21.0	479.6	463.5	445.6	429.6						

C Range: 0 - 360DEG

C Interval: 15.0DEG

Test Speed: HIGH

Temperature: 25.3DEG

Operators: Meng Yongjian

Test Date: 2017-06-13

γ Range: 0 - 90DEG

γ Interval: 1.0DEG

Test System: EVERFINE GO-2000B\_V1 SYSTEM V2.0.288

Humidity: 52%

Test Distance: 5.850m [K=1.0000]

Remarks:

Photometric Data Table [cd]

24.0	456.4	433.5	408.6	385.9
27.0	430.2	400.2	366.7	341.8
30.0	401.5	361.8	324.9	297.9
33.0	370.4	323.2	283.4	256.0
36.0	338.8	284.8	243.9	216.9
39.0	304.3	247.3	207.1	180.8
42.0	270.1	212.3	172.8	147.7
45.0	236.8	179.3	141.2	117.7
48.0	204.3	148.5	111.8	90.91
51.0	173.4	120.0	85.96	67.31
54.0	144.8	93.87	63.14	46.35
57.0	117.3	70.25	42.95	28.28
60.0	92.08	48.96	25.40	12.44
63.0	68.70	30.61	10.00	1.011
66.0	47.52	14.66	0.8918	0.9337
69.0	28.85	1.390	0.8111	0.9749
72.0	13.12	0.7656	0.7957	1.030
75.0	0.9641	0.6824	0.7408	1.091
78.0	0.6469	0.6125	0.6755	1.122
81.0	0.5462	0.5489	0.6556	1.115
84.0	0.4480	0.4530	0.5875	0.8058
87.0	0.3780	0.3109	0.2359	0.2057
90.0	0.3433	0.2536	0.2799	0.3979

C Range: 0 - 360DEG  
C Interval: 15.0DEG  
Test Speed: HIGH  
Temperature: 25.3DEG  
Operators: Meng Yongjian  
Test Date: 2017-06-13

γ Range: 0 - 90DEG  
γ Interval: 1.0DEG  
Test System: EVERFINE GO-2000B\_V1 SYSTEM V2.0.288  
Humidity: 52%  
Test Distance: 5.850m [K=1.0000]  
Remarks: