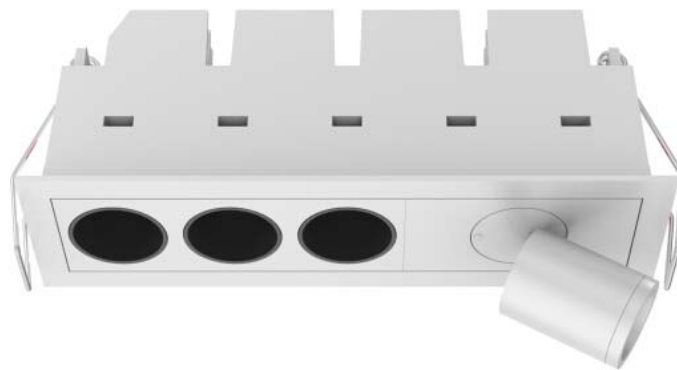


LED Downlight FUSION Series FF3-FS1-9W-940-40D



Light Output Ratio:	100.0%	
Luminaire Power:	10.64 W	
SHR Nominal:	0.50	Calculated using the TM5
SHR Maximum:	0.55	fine grid method.

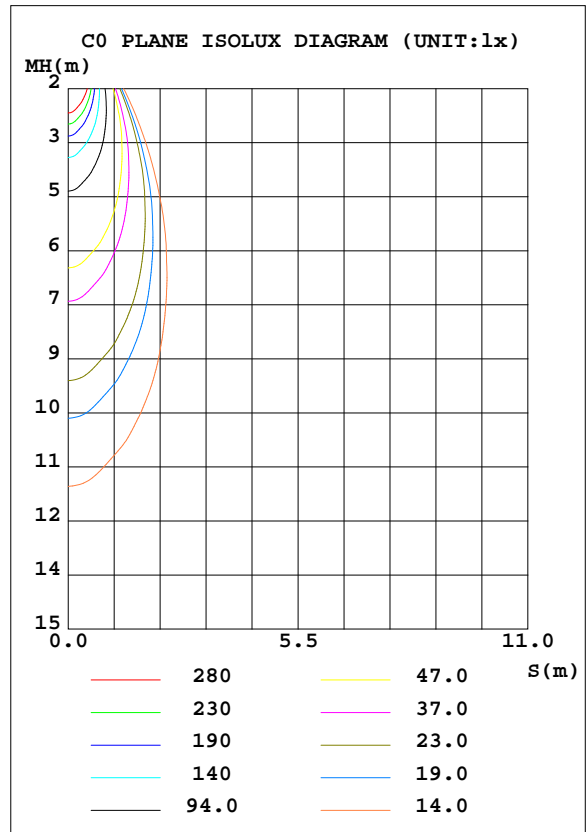
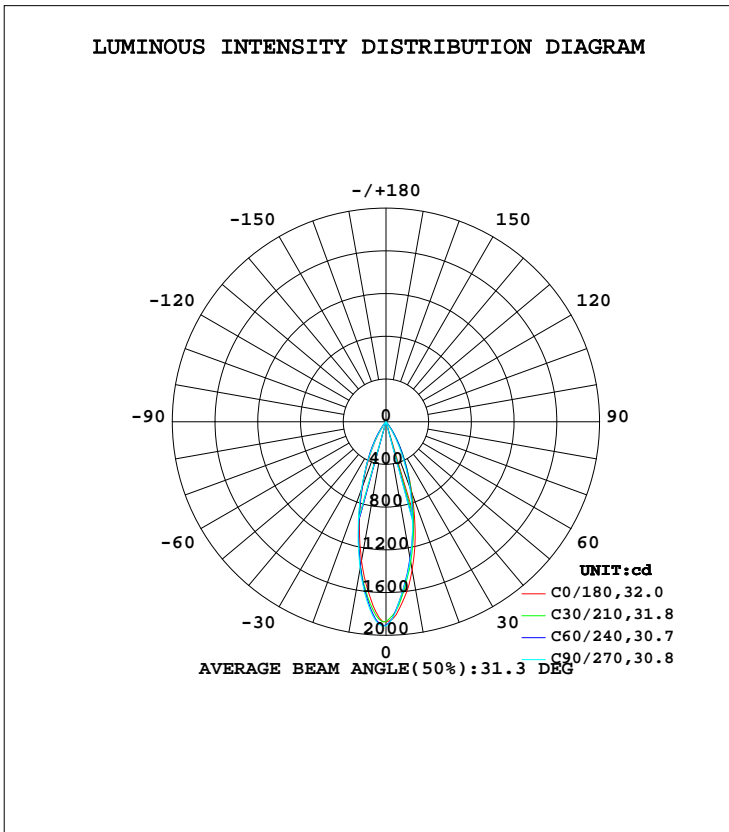
C Range: 0 - 360DEG
 C Interval: 15.0DEG
 Test Speed: HIGH
 Temperature: 25.3DEG
 Operators: Myles
 Test Date: 2018-06-08

γ Range: 0 - 90DEG
 γ Interval: 1.0DEG
 Test System: EVERFINE GO-2000B_V1 SYSTEM V2.0.362
 Humidity: 56%
 Test Distance: 5.850m [K=1.0000]
 Remarks:

LUMINAIRE PHOTOMETRIC TEST REPORT

Test:U:220.4V I:0.0553A P:10.64W PF:0.5472 Freq:49.90Hz Lamp Flux:690.205x1 lm		
NAME: FF3-FS1-9W-940-40D	TYPE:Downlight	SERIAL No.:
SPEC.:4000K	DIM.: L153mm*W45mm*H60mm	
MFR.: NEKO LIGHTING AG		

DATA OF LAMP		PHOTOMETRIC DATA			
MODEL	OSRAM-4000K	Imax(cd)	1948	S/MH(C0/180)	0.50
NOMINAL POWER(W)	11	LOR(%)	100.0	S/MH(C90/270)	0.52
RATED VOLTAGE(V)	220	TOTAL FLUX(lm)	690.21	η UP, DN(C0-180)	0.0,49.6
NOMINAL FLUX(lm)	690.205	CIE CLASS	DIRECT	η UP, DN(C180-360)	0.0,50.4
LAMPS INSIDE	1	η up(%)	0.0	CIBSE SHR NOM	0.50
TEST VOLTAGE(V)	220	η down(%)	100.0	CIBSE SHR MAX	0.55



C Range: 0 - 360DEG
 C Interval: 15.0DEG
 Test Speed: HIGH
 Temperature:25.3DEG
 Operators:Myles
 Test Date:2018-06-08

γ Range: 0 - 90DEG
 γ Interval: 1.0DEG
 Test System:EVERFINE GO-2000B_V1 SYSTEM V2.0.362
 Humidity:56%
 Test Distance:5.850m [K=1.0000]
 Remarks:

ZONAL FLUX DIAGRAM

ZONAL FLUX DIAGRAM:

γ	C0	C45	C90	C135	C180	C225	C270	C315	γ	Φ zone	Φ total	%lum,lamp
10	1411	1323	1311	1339	1325	1369	1399	1390	0- 10	151.4	151.4	21.9,21.9
20	712.3	686.8	655.0	656.1	646.8	650.4	671.5	675.4	10- 20	273.4	424.8	61.5,61.5
30	205.8	266.9	188.1	247.3	184.9	242.8	198.3	256.5	20- 30	190.1	614.9	89.1,89.1
40	16.75	47.37	15.14	42.53	15.70	44.28	18.58	50.04	30- 40	60.05	674.9	97.8,97.8
50	6.576	6.888	6.204	6.798	6.510	7.023	6.722	6.451	40- 50	9.376	684.3	99.1,99.1
60	2.886	2.753	2.748	2.827	2.807	2.770	2.941	2.555	50- 60	3.837	688.2	99.7,99.7
70	0.9377	0.8228	0.8217	0.9168	0.8050	0.8585	1.069	0.7775	60- 70	1.763	689.9	100,100
80	0.0416	0.0328	0.0503	0.0328	0.0262	0.0372	0.0262	0.0328	70- 80	0.2563	690.2	100,100
90	0.0262	0.0284	0.0306	0.0306	0.0153	0.0153	0.0153	0.0175	80- 90	0.0297	690.2	100,100
100									90-100			
110									100-110			
120									110-120			
130									120-130			
140									130-140			
150									140-150			
160									150-160			
170									160-170			
180									170-180			
DEG	LUMINOUS INTENSITY:cd									UNIT:lm		

Conical surface Flux(90deg): 681.03 lm

%lum = 98.7%

%lamp = 98.7%

Conical surface Flux(120deg): 688.16 lm

%lum = 99.7%

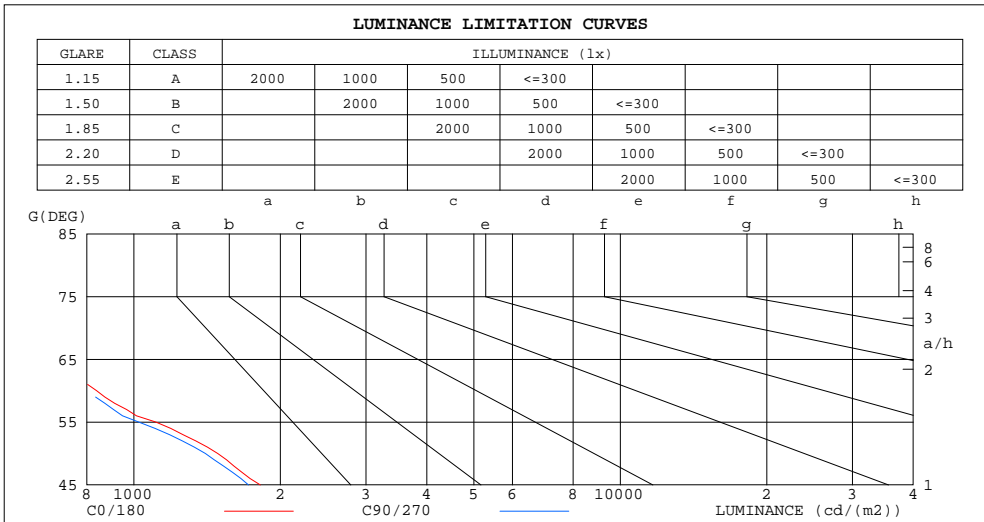
%lamp = 99.7%

C Range: 0 - 360DEG
C Interval: 15.0DEG
Test Speed: HIGH
Temperature:25.3DEG
Operators:Myles
Test Date:2018-06-08

γ Range: 0 - 90DEG
γ Interval: 1.0DEG
Test System:EVERFINE GO-2000B_V1 SYSTEM V2.0.362
Humidity:56%
Test Distance:5.850m [K=1.0000]
Remarks:

LUMINANCE LIMITATION CURVES

Test:U:220.4V I:0.0553A P:10.64W PF:0.5472 Freq:49.90Hz Lamp Flux:690.205x1 lm		
NAME: FF3-FS1-9W-940-40D	TYPE:Downlight	SERIAL No.:
SPEC.:4000K	DIM.: L153mm*W45mm*H60mm	
MFR.: NEKO LIGHTING AG		



LUMINANCE cd/(m2)		
G(DEG)	C0/180	C90/270
85	47	58
80	35	42
75	37	37
70	398	349
65	641	594
60	838	798
55	1109	1023
50	1486	1402
45	1819	1720

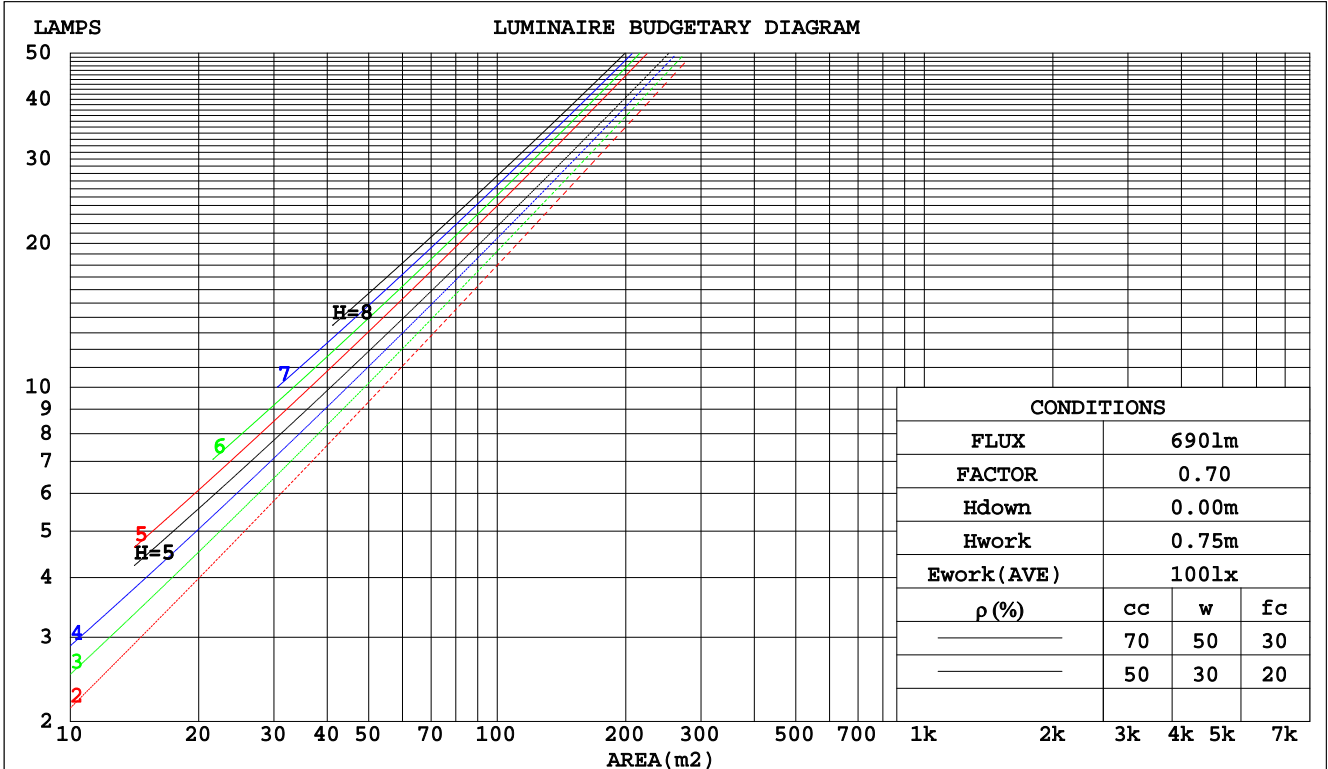
C Range: 0 - 360DEG
 C Interval: 15.0DEG
 Test Speed: HIGH
 Temperature:25.3DEG
 Operators:Myles
 Test Date:2018-06-08

γ Range: 0 - 90DEG
 γ Interval: 1.0DEG
 Test System:EVERFINE GO-2000B_V1 SYSTEM V2.0.362
 Humidity:56%
 Test Distance:5.850m [K=1.0000]
 Remarks:

CU AND LUMINAIRE BUDGETARY ESTIMATE DIAGRAM

Test:U:220.4V I:0.0553A P:10.64W PF:0.5472 Freq:49.90Hz Lamp Flux:690.205x1 lm		
NAME: FF3-FS1-9W-940-40D	TYPE:Downlight	SERIAL No.:
SPEC.:4000K	DIM.: L153mm*W45mm*H60mm	
MFR.: NEKO LIGHTING AG		

pcc	80%			70%			50%			30%			10%			0
	50%	30%	10%	50%	30%	10%	50%	30%	10%	50%	30%	10%	50%	30%	10%	0
pw																
pfc																
RCR	RCR:Room Cavity Ratio															
	Coefficients of Utilization(CU)															
0.0	1.19	1.19	1.19	1.16	1.16	1.16	1.11	1.11	1.11	1.06	1.06	1.06	1.02	1.02	1.02	1.00
1.0	1.12	1.10	1.08	1.10	1.08	1.06	1.06	1.04	1.03	1.02	1.01	.00	.99	.98	.97	.95
2.0	1.06	1.02	.00	1.04	1.01	.98	1.01	.98	.96	.98	.96	.94	.95	.94	.92	.91
3.0	1.00	.96	.93	.99	.95	.92	.96	.93	.91	.94	.91	.89	.92	.90	.88	.86
4.0	.95	.91	.87	.94	.90	.87	.92	.89	.86	.90	.87	.85	.88	.86	.84	.82
5.0	.91	.86	.82	.90	.85	.82	.88	.84	.81	.87	.83	.81	.85	.82	.80	.79
6.0	.87	.82	.78	.86	.81	.78	.85	.80	.77	.83	.80	.77	.82	.79	.76	.75
7.0	.83	.78	.75	.82	.78	.74	.81	.77	.74	.80	.76	.74	.79	.76	.73	.72
8.0	.79	.75	.71	.79	.74	.71	.78	.74	.71	.77	.73	.71	.76	.73	.70	.69
9.0	.76	.71	.68	.76	.71	.68	.75	.71	.68	.74	.70	.68	.73	.70	.67	.66
10.0	.73	.69	.65	.73	.68	.65	.72	.68	.65	.72	.68	.65	.71	.67	.65	.64



C Range: 0 - 360DEG
 C Interval: 15.0DEG
 Test Speed: HIGH
 Temperature: 25.3DEG
 Operators: Myles
 Test Date: 2018-06-08

γ Range: 0 - 90DEG
 γ Interval: 1.0DEG
 Test System: EVERFINE GO-2000B_V1 SYSTEM V2.0.362
 Humidity: 56%
 Test Distance: 5.850m [K=1.0000]
 Remarks:

WEC AND CCEC

Test:U:220.4V I:0.0553A P:10.64W PF:0.5472 Freq:49.90Hz Lamp Flux:690.205x1 lm		
NAME: FF3-FS1-9W-940-40D	TYPE:Downlight	SERIAL No.:
SPEC.:4000K	DIM.: L153mm*W45mm*H60mm	
MFR.: NEKO LIGHTING AG		

ρcc	80%			70%			50%			30%			10%			0
ρw	50%	30%	10%	50%	30%	10%	50%	30%	10%	50%	30%	10%	50%	30%	10%	0
ρfc	20%			20%			20%			20%			20%			0
RCR	RCR:Room Cavity Ratio						Wall Exitance Coefficients(WEC)									
0.0																
1.0	.153	.087	.028	.147	.084	.027	.134	.077	.025	.123	.071	.023	.112	.065	.021	
2.0	.144	.079	.024	.139	.077	.024	.129	.071	.022	.119	.067	.021	.110	.062	.020	
3.0	.136	.072	.022	.132	.070	.021	.123	.067	.020	.115	.063	.019	.107	.059	.018	
4.0	.129	.067	.020	.125	.065	.019	.117	.062	.019	.111	.059	.018	.104	.057	.017	
5.0	.122	.062	.018	.119	.061	.018	.112	.059	.017	.107	.056	.017	.101	.054	.016	
6.0	.116	.058	.017	.113	.057	.016	.108	.055	.016	.103	.053	.016	.098	.051	.015	
7.0	.111	.055	.016	.109	.054	.015	.104	.052	.015	.099	.051	.015	.095	.049	.014	
8.0	.106	.052	.015	.104	.051	.014	.100	.050	.014	.096	.048	.014	.092	.047	.014	
9.0	.102	.049	.014	.100	.049	.014	.096	.047	.013	.092	.046	.013	.089	.045	.013	
10.0	.098	.047	.013	.096	.046	.013	.093	.045	.013	.089	.044	.013	.086	.043	.012	

ρcc	80%			70%			50%			30%			10%			0
ρw	50%	30%	10%	50%	30%	10%	50%	30%	10%	50%	30%	10%	50%	30%	10%	0
ρfc	20%			20%			20%			20%			20%			0
RCR	RCR:Room Cavity Ratio						Ceiling Cavity Exitance Coefficients(CCEC)									
0.0	.190	.190	.190	.163	.163	.163	.111	.111	.111	.064	.064	.064	.020	.020	.020	
1.0	.169	.158	.147	.145	.135	.126	.099	.093	.087	.057	.054	.051	.018	.017	.016	
2.0	.153	.133	.116	.131	.114	.100	.090	.079	.070	.052	.046	.041	.017	.015	.013	
3.0	.139	.113	.093	.119	.098	.081	.082	.068	.057	.047	.040	.033	.015	.013	.011	
4.0	.127	.098	.076	.109	.085	.066	.075	.059	.047	.043	.035	.028	.014	.011	.009	
5.0	.118	.086	.063	.101	.075	.055	.070	.052	.039	.040	.031	.023	.013	.010	.008	
6.0	.109	.077	.053	.094	.066	.046	.065	.046	.033	.038	.027	.019	.012	.009	.006	
7.0	.102	.069	.045	.088	.060	.039	.061	.042	.028	.035	.025	.017	.011	.008	.005	
8.0	.096	.062	.039	.083	.054	.034	.057	.038	.024	.033	.022	.014	.011	.007	.005	
9.0	.091	.057	.034	.078	.049	.029	.054	.035	.021	.032	.020	.012	.010	.007	.004	
10.0	.086	.052	.030	.074	.045	.026	.052	.032	.018	.030	.019	.011	.010	.006	.004	

C Range: 0 - 360DEG
 C Interval: 15.0DEG
 Test Speed: HIGH
 Temperature:25.3DEG
 Operators:Myles
 Test Date:2018-06-08

γ Range: 0 - 90DEG
 γ Interval: 1.0DEG
 Test System:EVERFINE GO-2000B_V1 SYSTEM V2.0.362
 Humidity:56%
 Test Distance:5.850m [K=1.0000]
 Remarks:

UGR(Unified Glare Rating) Table

Test:U:220.4V I:0.0553A P:10.64W PF:0.5472 Freq:49.90Hz Lamp Flux:690.205x1 lm		
NAME: FF3-FS1-9W-940-40D	TYPE:Downlight	SERIAL No.:
SPEC.:4000K	DIM.: L153mm*W45mm*H60mm	
MFR.: NEKO LIGHTING AG		

ceiling/cavity	0.7	0.7	0.5	0.5	0.3	0.7	0.7	0.5	0.5	0.3
walls	0.5	0.3	0.5	0.3	0.3	0.5	0.3	0.5	0.3	0.3
working plane	0.2	0.2	0.2	0.2	0.2	0.2	0.2	0.2	0.2	0.2
Room dimensions	Viewed crosswise					Viewed endwise				
x = 2H y = 2H	11.6	12.4	11.8	12.6	12.7	11.3	12.0	11.5	12.2	12.3
3H	11.5	12.2	11.8	12.4	12.6	11.1	11.9	11.4	12.0	12.2
4H	11.4	12.1	11.7	12.3	12.5	11.1	11.7	11.3	11.9	12.2
6H	11.4	12.0	11.6	12.2	12.5	11.0	11.6	11.3	11.8	12.1
8H	11.3	11.9	11.6	12.2	12.4	10.9	11.5	11.2	11.8	12.0
12H	11.3	11.9	11.6	12.1	12.4	10.9	11.5	11.2	11.7	12.0
4H 2H	11.4	12.1	11.7	12.3	12.5	11.1	11.7	11.3	11.9	12.2
3H	11.3	11.9	11.6	12.2	12.4	10.9	11.5	11.2	11.8	12.1
4H	11.2	11.8	11.6	12.1	12.4	10.8	11.4	11.2	11.7	12.0
6H	11.1	11.6	11.5	11.9	12.3	10.7	11.2	11.1	11.5	11.9
8H	11.1	11.5	11.5	11.9	12.2	10.7	11.1	11.1	11.5	11.8
12H	11.0	11.4	11.4	11.8	12.2	10.6	11.0	11.0	11.4	11.8
8H 4H	11.1	11.5	11.5	11.9	12.2	10.7	11.1	11.1	11.5	11.8
6H	11.0	11.3	11.4	11.7	12.1	10.6	10.9	11.0	11.3	11.7
8H	10.9	11.2	11.3	11.6	12.1	10.5	10.8	11.0	11.3	11.7
12H	10.8	11.1	11.3	11.6	12.0	10.5	10.7	10.9	11.2	11.6
12H 4H	11.0	11.4	11.4	11.8	12.2	10.6	11.0	11.0	11.4	11.8
6H	10.9	11.2	11.3	11.6	12.1	10.5	10.8	11.0	11.3	11.7
8H	10.8	11.1	11.3	11.6	12.0	10.5	10.7	10.9	11.2	11.6
Variations with the observer position at spacings:										
S = 1.0H	+ 2.3 / - 5.0					+ 2.2 / - 5.1				
1.5H	+ 4.2 / - 3.8					+ 3.9 / - 3.8				
2.0H	+ 2.4 / - 2.3					+ 2.2 / - 2.5				

CIE Pub.117, 690.2 lm Total Lamp Luminous Flux Correct (8log(F/F0) = -1.3)

C Range: 0 - 360DEG
 C Interval: 15.0DEG
 Test Speed: HIGH
 Temperature:25.3DEG
 Operators:Myles
 Test Date:2018-06-08

γ Range: 0 - 90DEG
 γ Interval: 1.0DEG
 Test System:EVERFINE GO-2000B_V1 SYSTEM V2.0.362
 Humidity:56%
 Test Distance:5.850m [K=1.0000]
 Remarks:

UTILIZATION FACTORS TABLE

Test:U:220.4V I:0.0553A P:10.64W PF:0.5472 Freq:49.90Hz Lamp Flux:690.205x1 lm		
NAME: FF3-FS1-9W-940-40D	TYPE:Downlight	SERIAL No.:
SPEC.:4000K	DIM.: L153mm*W45mm*H60mm	
MFR.: NEKO LIGHTING AG		

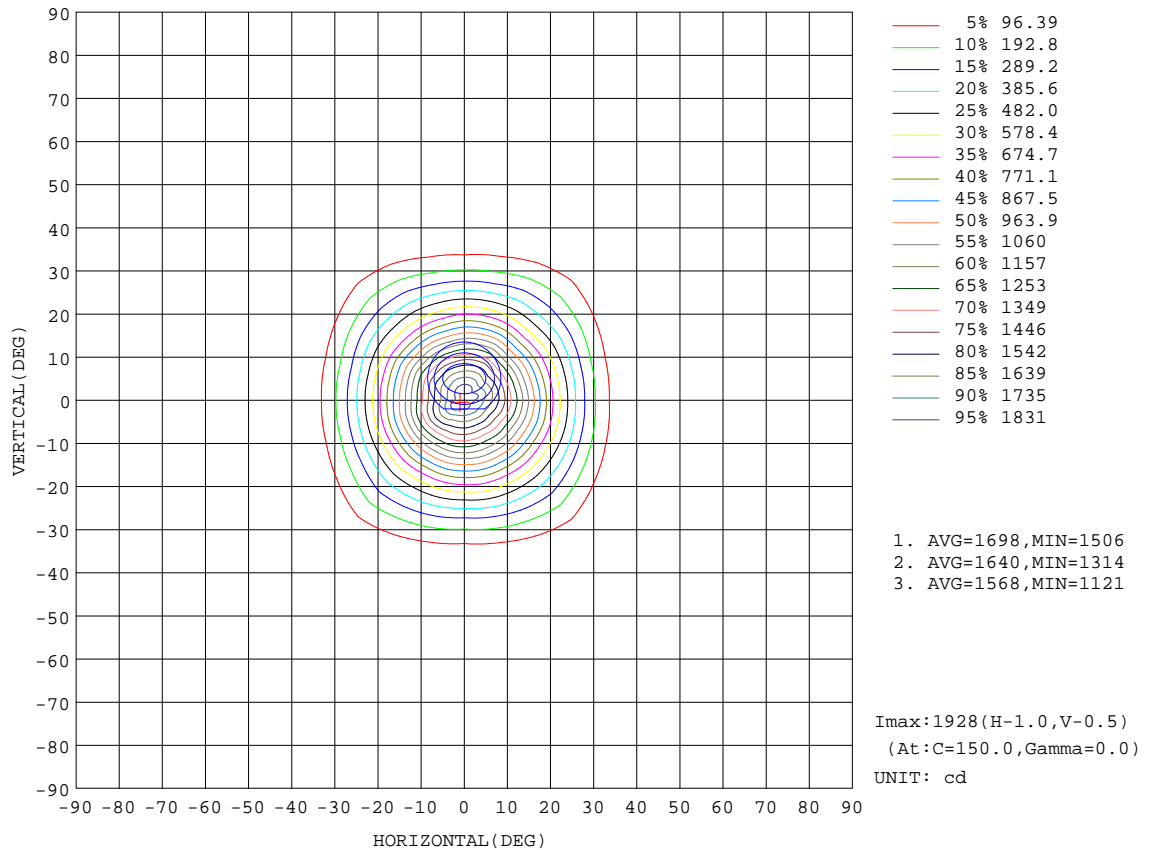
REFLECTANCE										
Ceiling	0.8	0.8	0.8	0.7	0.7	0.7	0.5	0.5	0.5	0
Walls	0.7	0.5	0.3	0.7	0.5	0.3	0.7	0.5	0.3	0
Working plane	0.2	0.2	0.2	0.2	0.2	0.2	0.2	0.2	0.2	0
ROOM INDEX	UTILIZATION FACTORS(PERCENT) $k(RI) \times RCR = 5$									
k = 0.60	90	84	81	90	84	81	89	84	81	77
0.80	97	92	89	97	92	88	95	91	88	85
1.00	101	96	93	100	96	92	99	95	92	88
1.25	105	100	97	104	99	96	102	98	96	92
1.50	107	103	100	106	102	99	104	101	98	94
2.00	110	106	103	108	105	102	106	103	100	95
2.50	111	108	105	109	106	104	106	104	102	96
3.00	112	109	107	111	108	106	107	105	104	97
4.00	114	112	110	112	110	108	109	107	106	99
5.00	116	114	112	113	112	110	110	108	107	100
ROOM INDEX	UF(total)									Direct
According to DIN EN 13032-2 2004			Suspended				SHRNOM = 1.25			

C Range: 0 - 360DEG
 C Interval: 15.0DEG
 Test Speed: HIGH
 Temperature:25.3DEG
 Operators:Myles
 Test Date:2018-06-08

γ Range: 0 - 90DEG
 γ Interval: 1.0DEG
 Test System:EVERFINE GO-2000B_V1 SYSTEM V2.0.362
 Humidity:56%
 Test Distance:5.850m [K=1.0000]
 Remarks:

ISOCANDELA DIAGRAM

Test:U:220.4V I:0.0553A P:10.64W PF:0.5472 Freq:49.90Hz Lamp Flux:690.205x1 lm		
NAME: FF3-FS1-9W-940-40D	TYPE:Downlight	SERIAL No.:
SPEC.:4000K	DIM.: L153mm*W45mm*H60mm	
MFR.: NEKO LIGHTING AG		



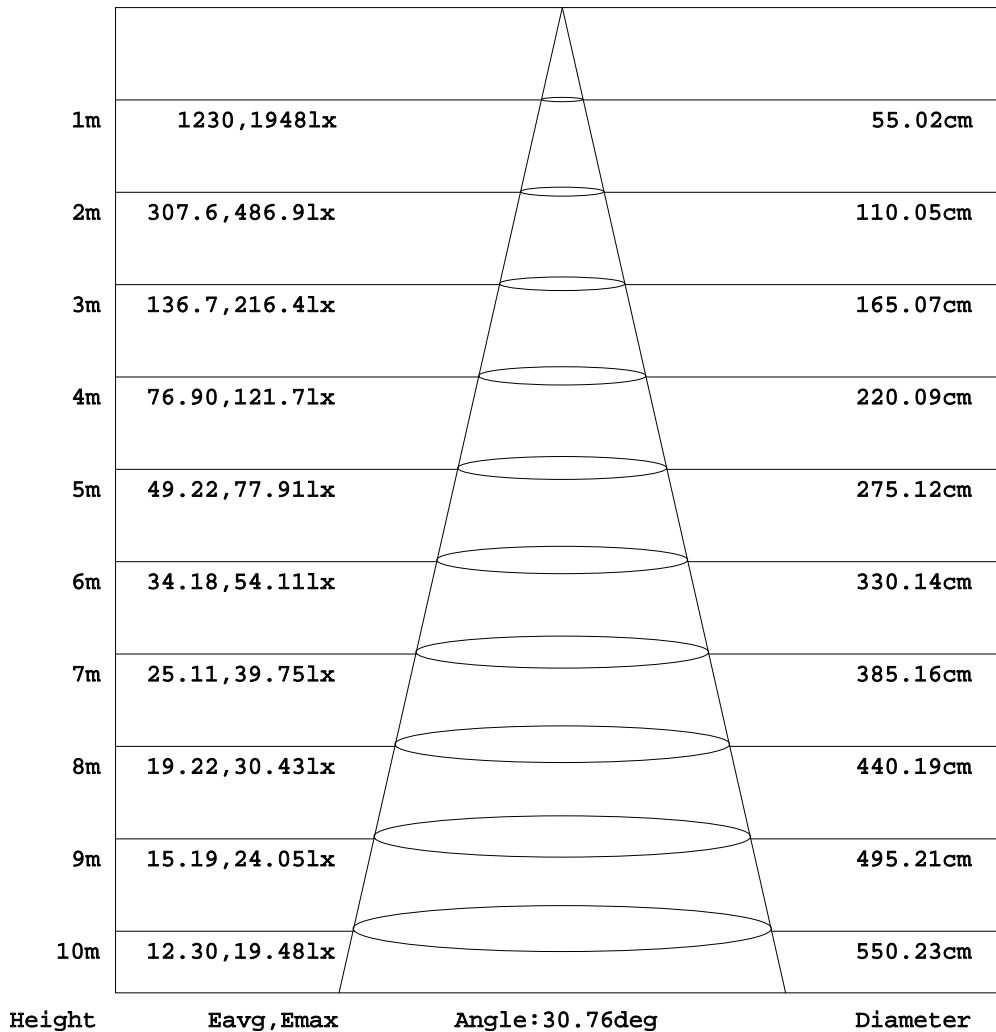
C Range: 0 - 360DEG
C Interval: 15.0DEG
Test Speed: HIGH
Temperature:25.3DEG
Operators:Myles
Test Date:2018-06-08

γ Range: 0 - 90DEG
γ Interval: 1.0DEG
Test System:EVERFINE GO-2000B_V1 SYSTEM V2.0.362
Humidity:56%
Test Distance:5.850m [K=1.0000]
Remarks:

AAI Figure

Test:U:220.4V I:0.0553A P:10.64W PF:0.5472 Freq:49.90Hz Lamp Flux:690.205x1 lm		
NAME: FF3-FS1-9W-940-40D	TYPE:Downlight	SERIAL No.:
SPEC.:4000K	DIM.: L153mm*W45mm*H60mm	
MFR.: NEKO LIGHTING AG		

Flux out:317.8 lm



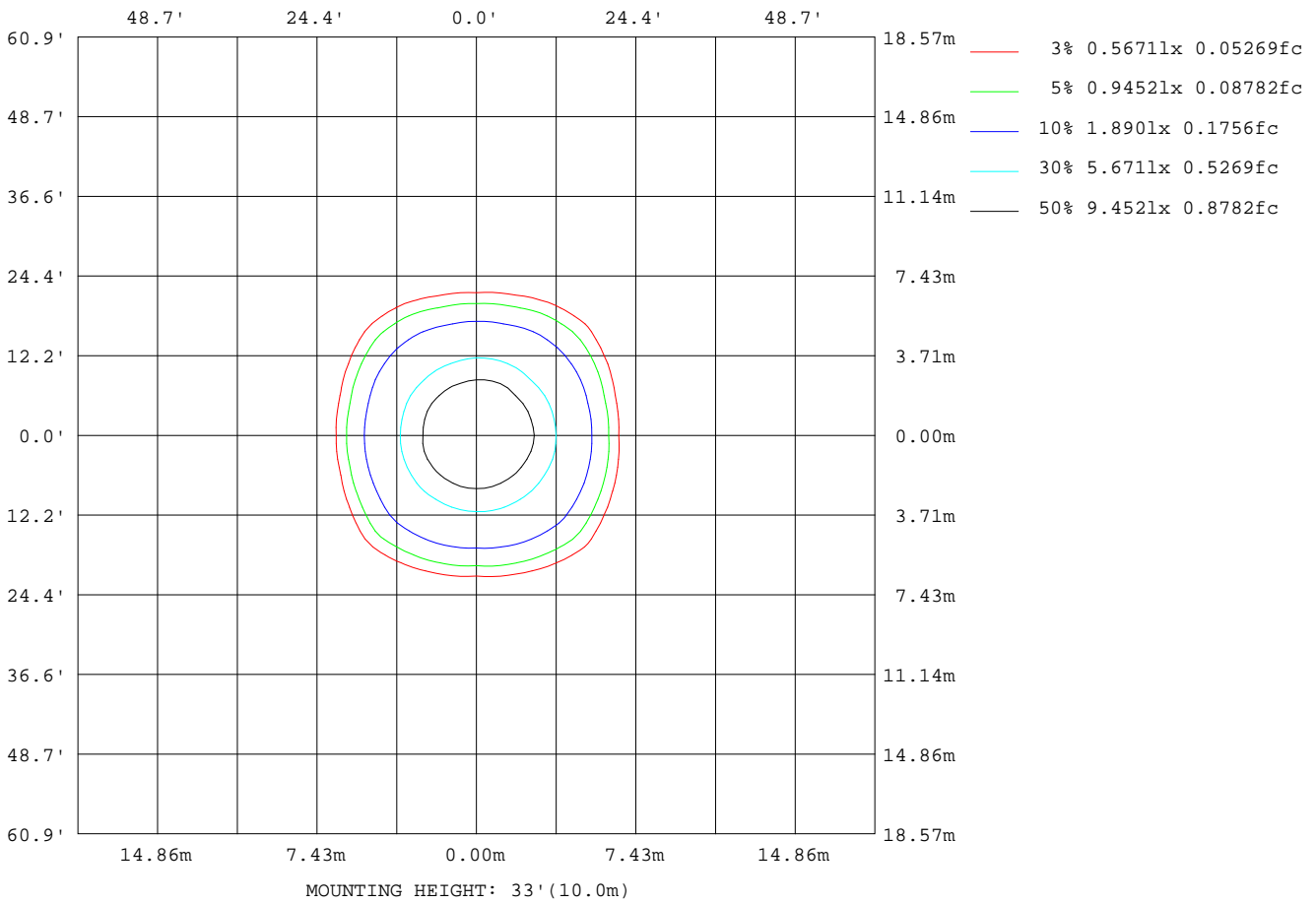
Note:The Curves indicate the illuminated area and the average illumination when the luminaire is at different distance.

C Range: 0 - 360DEG
C Interval: 15.0DEG
Test Speed: HIGH
Temperature:25.3DEG
Operators:Myles
Test Date:2018-06-08

γ Range: 0 - 90DEG
γ Interval: 1.0DEG
Test System:EVERFINE GO-2000B_V1 SYSTEM V2.0.362
Humidity:56%
Test Distance:5.850m [K=1.0000]
Remarks:

ISOLUX DIAGRAM

Test:U:220.4V I:0.0553A P:10.64W PF:0.5472 Freq:49.90Hz Lamp Flux:690.205x1 lm		
NAME: FF3-FS1-9W-940-40D	TYPE:Downlight	SERIAL No.:
SPEC.:4000K	DIM.: L153mm*W45mm*H60mm	
MFR.: NEKO LIGHTING AG		



C Range: 0 - 360DEG
C Interval: 15.0DEG
Test Speed: HIGH
Temperature:25.3DEG
Operators:Myles
Test Date:2018-06-08

γ Range: 0 - 90DEG
γ Interval: 1.0DEG
Test System:EVERFINE GO-2000B_V1 SYSTEM V2.0.362
Humidity:56%
Test Distance:5.850m [K=1.0000]
Remarks:

LED Avg.L Report

Test:U:220.4V I:0.0553A P:10.64W PF:0.5472 Freq:49.90Hz Lamp Flux:690.205x1 lm		
NAME: FF3-FS1-9W-940-40D	TYPE:Downlight	SERIAL No.:
SPEC.:4000K	DIM.: L153mm*W45mm*H60mm	
MFR.: NEKO LIGHTING AG		

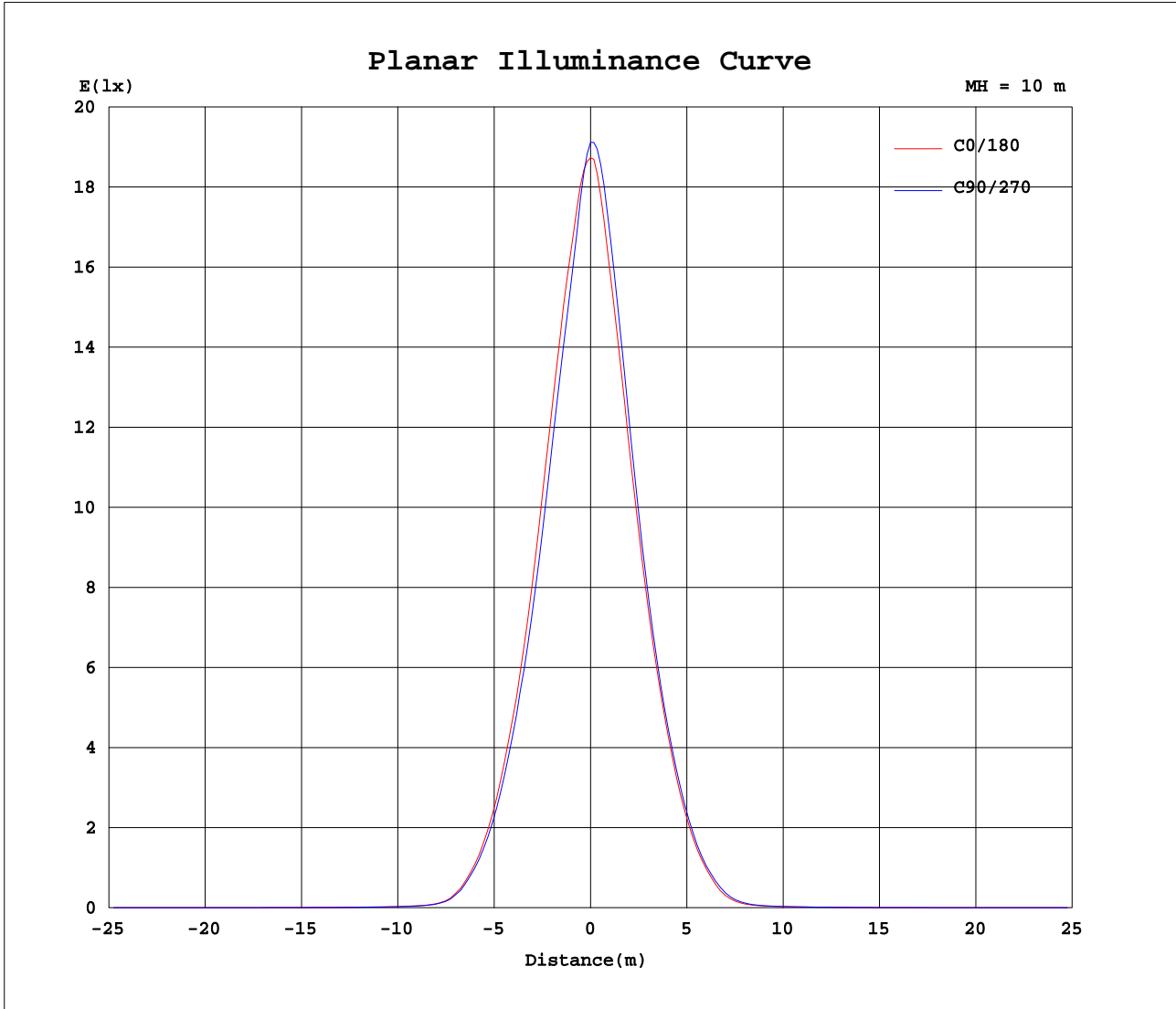
AvgL	cd/m2
L_0~180(65)av	620
L_0~180(75)av	30
L_0~180(85)av	36
L_90~270(65)av	635
L_90~270(75)av	30
L_90~270(85)av	42
L_45(65)av	599
L_45(75)av	32
L_45(85)av	45

Standard: GB/T 29293-2012

C Range: 0 - 360DEG
C Interval: 15.0DEG
Test Speed: HIGH
Temperature:25.3DEG
Operators:Myles
Test Date:2018-06-08

γ Range: 0 - 90DEG
 γ Interval: 1.0DEG
Test System:EVERFINE GO-2000B_V1 SYSTEM V2.0.362
Humidity:56%
Test Distance:5.850m [K=1.0000]
Remarks:

Planar Illuminance Curve



C Range: 0 - 360DEG
 C Interval: 15.0DEG
 Test Speed: HIGH
 Temperature: 25.3DEG
 Operators: Myles
 Test Date: 2018-06-08

γ Range: 0 - 90DEG
 γ Interval: 1.0DEG
 Test System: EVERFINE GO-2000B_V1 SYSTEM V2.0.362
 Humidity: 56%
 Test Distance: 5.850m [K=1.0000]
 Remarks:

LUMINOUS DISTRIBUTION INTENSITY DATA

Test:U:220.4V I:0.0553A P:10.64W PF:0.5472 Freq:49.90Hz Lamp Flux:690.205x1 lm		
NAME: FF3-FS1-9W-940-40D	TYPE:Downlight	SERIAL No.:
SPEC.:4000K	DIM.: L153mm*W45mm*H60mm	
MFR.: NEKO LIGHTING AG		

Table--1

UNIT: cd

C(DEG) γ (DEG)	0	15	30	45	60	75	90	105	120	135	150	165	180	195	210	225	240	255	270
0	1873	1873	1870	1895	1905	1909	1912	1915	1923	1902	1948	1944	1873	1873	1870	1895	1905	1909	1912
5	1707	1689	1660	1656	1635	1632	1634	1640	1655	1707	1730	1712	1662	1674	1708	1715	1738	1750	1755
10	1411	1386	1335	1323	1295	1303	1311	1317	1317	1339	1373	1368	1325	1339	1375	1369	1380	1377	1399
15	1055	1040	1003	993	972	971	960	964	958	969	975	984	964	970	993	983	987	979	1007
20	712	714	693	687	669	664	655	648	644	656	649	650	647	647	664	650	656	648	671
25	428	438	442	442	428	409	388	398	408	418	398	384	381	385	409	410	415	403	405
30	206	221	241	267	238	209	188	205	225	247	210	188	185	188	219	243	235	204	198
35	65.9	76.1	99.9	128	100	70.8	59.2	68.3	92.6	115	84.0	59.2	55.9	64.9	89.1	116	104	76.6	68.1
40	16.8	19.4	27.8	47.4	26.2	17.5	15.1	17.1	24.3	42.5	24.5	16.4	15.7	17.4	26.5	44.3	30.6	20.6	18.6
45	8.86	9.45	11.0	14.1	10.3	8.56	8.38	8.59	9.88	13.6	10.3	8.73	8.71	9.04	11.2	14.5	11.6	9.97	9.45
50	6.58	6.57	6.36	6.89	6.34	6.30	6.20	6.20	6.23	6.80	6.42	6.25	6.51	6.43	6.76	7.02	6.69	6.67	6.72
55	4.38	4.36	4.26	4.11	4.02	4.07	4.04	4.03	4.02	4.32	4.00	3.96	4.21	4.20	4.30	4.18	4.28	4.29	4.45
60	2.89	2.88	2.84	2.75	2.68	2.73	2.75	2.70	2.68	2.83	2.73	2.65	2.81	2.83	2.86	2.77	2.84	2.90	2.94
65	1.87	1.85	1.80	1.73	1.65	1.70	1.73	1.68	1.67	1.83	1.81	1.71	1.74	1.77	1.84	1.78	1.84	1.91	1.97
70	0.94	0.94	0.89	0.82	0.76	0.79	0.82	0.78	0.77	0.92	0.95	0.85	0.80	0.83	0.88	0.86	0.93	1.01	1.07
75	0.07	0.04	0.06	0.03	0.06	0.04	0.07	0.04	0.06	0.10	0.06	0.04	0.04	0.05	0.03	0.05	0.03	0.05	0.04
80	0.04	0.03	0.04	0.03	0.04	0.03	0.05	0.03	0.05	0.03	0.04	0.03	0.03	0.04	0.03	0.04	0.03	0.04	0.03
85	0.03	0.03	0.03	0.03	0.04	0.03	0.03	0.03	0.03	0.03	0.03	0.03	0.02	0.03	0.02	0.02	0.02	0.03	0.02
90	0.03	0.03	0.03	0.03	0.03	0.03	0.03	0.03	0.03	0.03	0.03	0.03	0.02	0.02	0.02	0.02	0.02	0.02	0.02

C Range: 0 - 360DEG
 C Interval: 15.0DEG
 Test Speed: HIGH
 Temperature:25.3DEG
 Operators:Myles
 Test Date:2018-06-08

γ Range: 0 - 90DEG
 γ Interval: 1.0DEG
 Test System:EVERFINE GO-2000B_V1 SYSTEM V2.0.362
 Humidity:56%
 Test Distance:5.850m [K=1.0000]
 Remarks:

