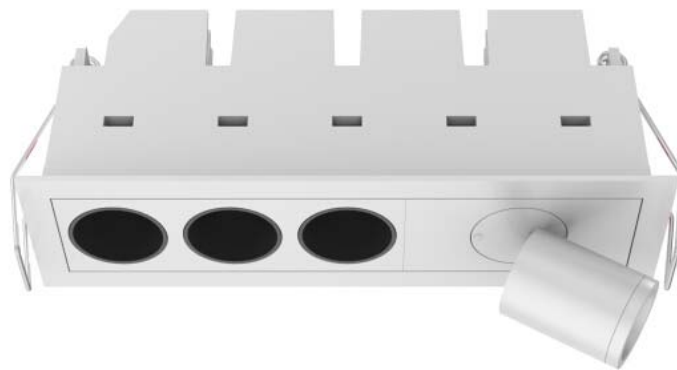


LED Downlight FUSION Series FF3-FS1-9W-830-40D Black



Light Output Ratio:	100.0%	
Luminaire Power:	10.66 W	
SHR Nominal:	0.50	Calculated using the TM5
SHR Maximum:	0.55	fine grid method.

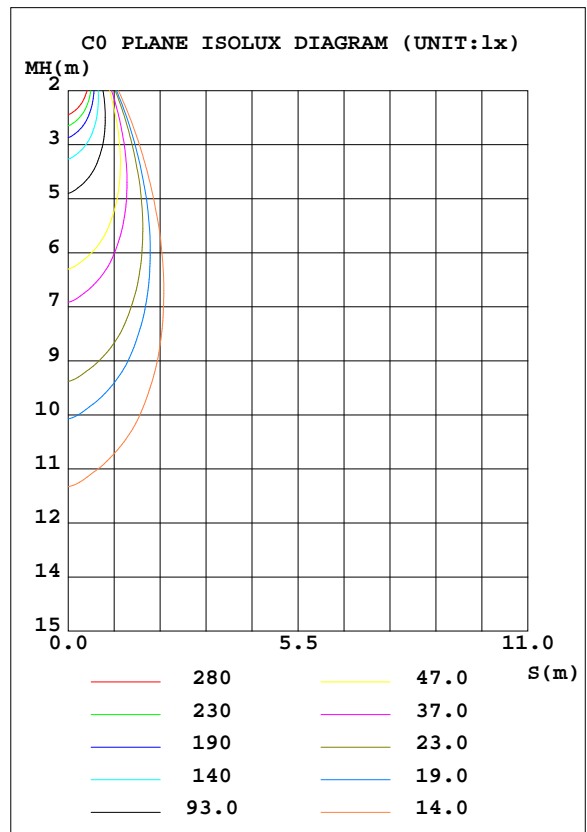
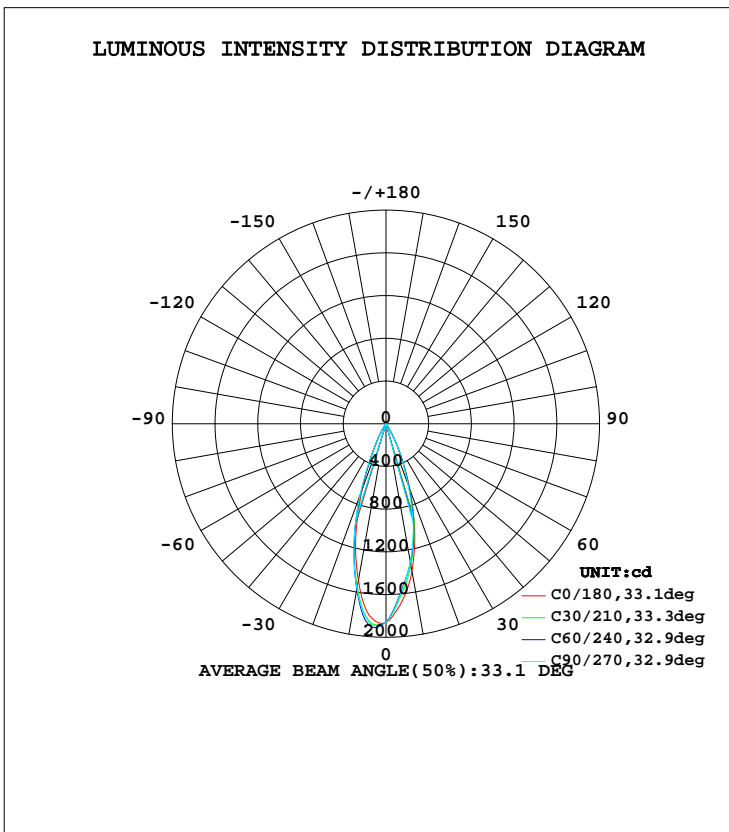
C Range: 0 - 360DEG
C Interval: 15.0DEG
Test Speed: HIGH
Temperature: 25.2DEG
Operators: Cao Chengpei
Test Date: 2016-12-21

γ Range: 0 - 90DEG
 γ Interval: 1.0DEG
Test System: EVERFINE GO-2000B_V1 SYSTEM V2.0.288
Humidity: 52%
Test Distance: 5.850m [K=1.0000]
Remarks:

LUMINAIRE PHOTOMETRIC TEST REPORT

Test:U:220.7V I:0.0557A P:10.66W PF:0.8670 Lamp Flux:623.626x1 lm		
NAME: FF3-FS1-9W-830-40D Black	TYPE:Downlight	SERIAL No.:
SPEC.:3000K	DIM.: L153mm*W45mm*H60mm	
MFR.: NEKO LIGHTING AG		

DATA OF LAMP		PHOTOMETRIC DATA				Eff: 58.48 lm/W
MODEL	CREE-3000K	I _{max} (cd)	1910	S/MH(C0/180)	0.54	
NOMINAL POWER(W)	11.0	LOR(%)	100.0	S/MH(C90/270)	0.56	
RATED VOLTAGE(V)	220	TOTAL FLUX(lm)	623.63	η UP, DN(C0-180)	0.0, 48.0	
NOMINAL FLUX(lm)	623.626	CIE CLASS	DIRECT	η UP, DN(C180-360)	0.0, 52.0	
LAMPS INSIDE	1	η up(%)	0.0	CIBSE SHR NOM	0.50	
TEST VOLTAGE(V)	220	η down(%)	100.0	CIBSE SHR MAX	0.55	



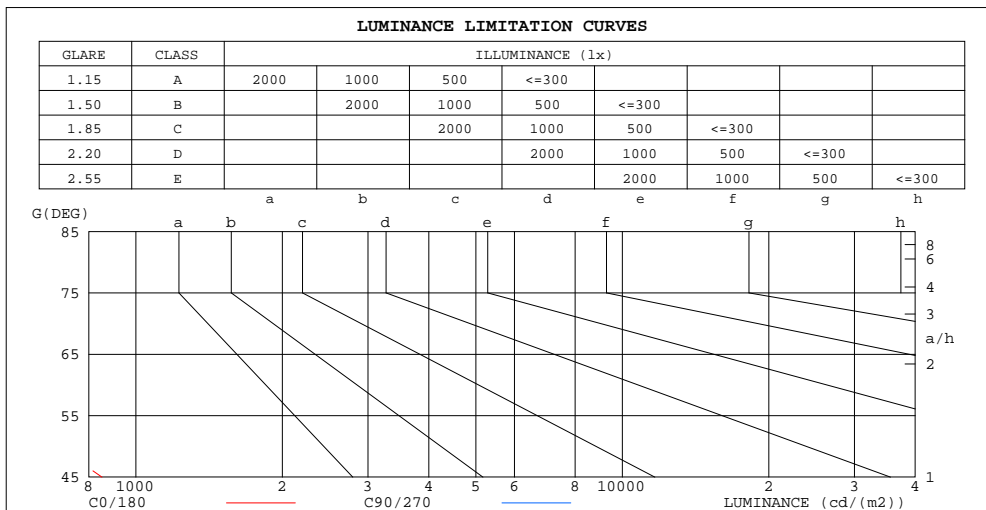
C Range: 0 - 360DEG
 C Interval: 15.0DEG
 Test Speed: HIGH
 Temperature: 25.2DEG
 Operators: Cao Chengpei
 Test Date: 2016-12-21

γ Range: 0 - 90DEG
 γ Interval: 1.0DEG
 Test System: EVERFINE GO-2000B_V1 SYSTEM V2.0.288
 Humidity: 52%
 Test Distance: 5.850m [K=1.0000]
 Remarks:

**ZONAL FLUX DIAGRAM
AND LUMINANCE LIMITATION CURVES**

ZONAL FLUX DIAGRAM:

γ	C0	C45	C90	C135	C180	C225	C270	C315	γ	Φ zone	Φ total	#lum,lamp
10	1402	1336	1316	1382	1491	1554	1569	1486	0- 10	156.1	156.1	25,25
20	656.9	646.4	606.8	602.7	652.4	675.7	708.0	660.0	10- 20	287.7	443.8	71.2,71.2
30	117.5	122.4	119.6	124.5	118.3	108.0	105.4	108.7	20- 30	149.6	593.5	95.2,95.2
40	6.635	6.337	7.077	8.539	11.53	13.16	11.76	8.113	30- 40	23.33	616.8	98.9,98.9
50	2.603	2.245	2.311	3.064	4.167	5.008	4.740	3.451	40- 50	4.300	621.1	99.6,99.6
60	0.9212	0.8237	0.8231	1.030	1.239	1.394	1.407	1.089	50- 60	1.691	622.8	99.9,99.9
70	0.2519	0.1850	0.1922	0.3126	0.4571	0.5502	0.5509	0.3434	60- 70	0.6889	623.5	100,100
80	0.0405	0.0276	0.0383	0.0277	0.0128	0.0405	0.0276	0.0384	70- 80	0.1278	623.6	100,100
90	0.0192	0.0213	0.0234	0.0213	0.0128	0.0149	0.0128	0.0149	80- 90	0.0240	623.6	100,100
100									90-100			
110									100-110			
120									110-120			
130									120-130			
140									130-140			
150									140-150			
160									150-160			
170									160-170			
180									170-180			
DEG	LUMINOUS INTENSITY:cd									UNIT:lm		



LUMINANCE cd/(m2)		
G(DEG)	C0/180	C90/270
85	43	50
80	34	32
75	31	28
70	108	82
65	190	164
60	269	241
55	358	332
50	592	526
45	852	794

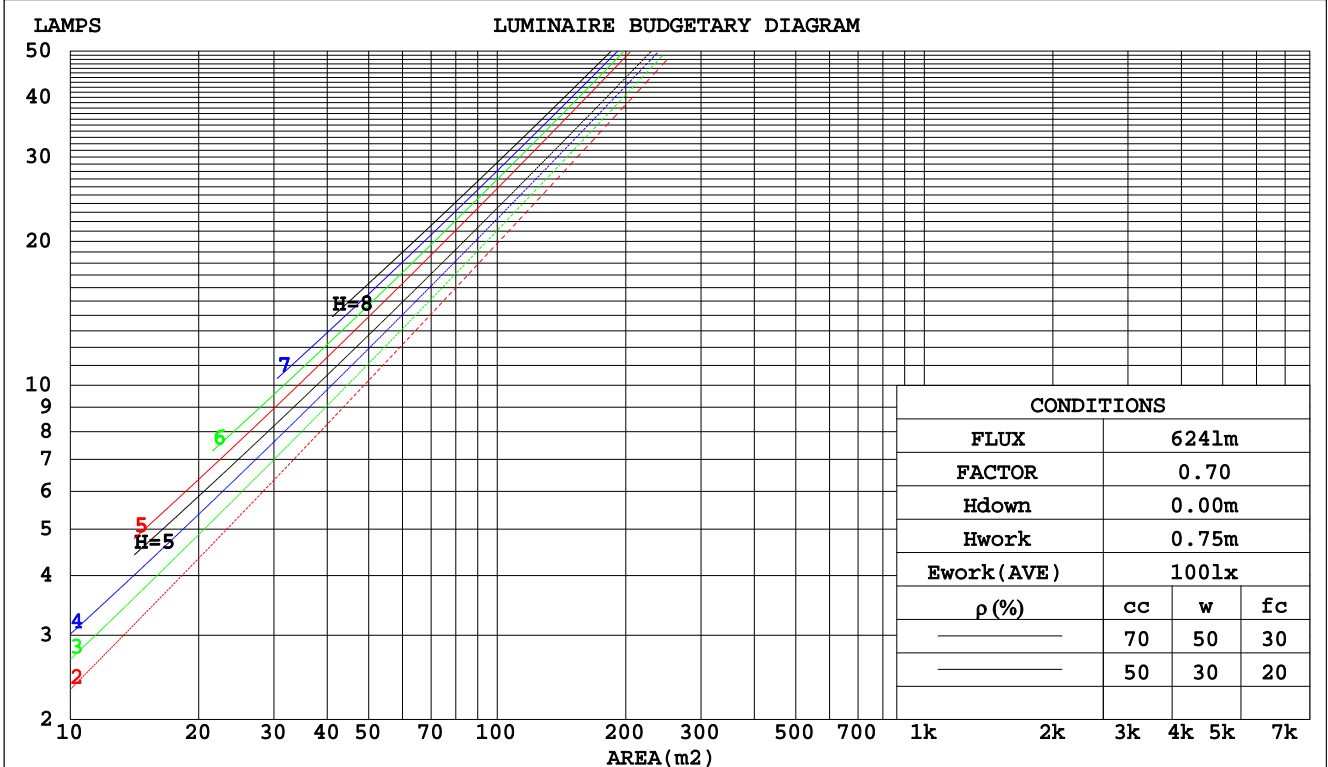
C Range: 0 - 360DEG
C Interval: 15.0DEG
Test Speed: HIGH
Temperature: 25.2DEG
Operators: Cao Chengpei
Test Date: 2016-12-21

γ Range: 0 - 90DEG
 γ Interval: 1.0DEG
Test System: EVERFINE GO-2000B_V1 SYSTEM V2.0.288
Humidity: 52%
Test Distance: 5.850m [K=1.0000]
Remarks:

CU AND LUMINAIRE BUDGETARY ESTIMATE DIAGRAM

Test:U:220.7V I:0.0557A P:10.66W PF:0.8670 Lamp Flux:623.626x1 lm		
NAME: FF3-FS1-9W-830-40D Black	TYPE:Downlight	SERIAL No.:
SPEC.:3000K	DIM.: L153mm*W45mm*H60mm	
MFR.: NEKO LIGHTING AG		

pcc	80%			70%			50%			30%			10%			0
	50%	30%	10%	50%	30%	10%	50%	30%	10%	50%	30%	10%	50%	30%	10%	0
pw																
pfc																
RCR	RCR:Room Cavity Ratio															
	Coefficients of Utilization(CU)															
0.0	1.19	1.19	1.19	1.16	1.16	1.16	1.11	1.11	1.11	1.06	1.06	1.06	1.02	1.02	1.02	.00
1.0	1.12	1.10	1.09	1.10	1.09	1.07	1.06	1.05	1.04	1.03	1.02	1.01	.99	.98	.98	.96
2.0	1.07	1.04	1.01	1.05	1.02	.00	1.02	.00	.98	.99	.97	.96	.96	.95	.94	.92
3.0	1.02	.98	.95	1.00	.97	.94	.98	.95	.93	.96	.93	.91	.93	.91	.90	.88
4.0	.97	.93	.90	.96	.92	.89	.94	.91	.88	.92	.89	.87	.90	.88	.86	.85
5.0	.93	.89	.85	.92	.88	.85	.91	.87	.84	.89	.86	.84	.88	.85	.83	.82
6.0	.89	.85	.82	.89	.84	.81	.87	.84	.81	.86	.83	.80	.85	.82	.80	.79
7.0	.86	.81	.78	.85	.81	.78	.84	.80	.78	.83	.80	.77	.82	.79	.77	.76
8.0	.83	.78	.75	.82	.78	.75	.81	.77	.75	.80	.77	.74	.80	.76	.74	.73
9.0	.80	.75	.72	.79	.75	.72	.79	.75	.72	.78	.74	.72	.77	.74	.72	.71
10.0	.77	.73	.70	.77	.73	.70	.76	.72	.70	.75	.72	.69	.75	.72	.69	.68



C Range: 0 - 360DEG
 C Interval: 15.0DEG
 Test Speed: HIGH
 Temperature:25.2DEG
 Operators:Cao Chengpei
 Test Date:2016-12-21

γ Range: 0 - 90DEG
 γ Interval: 1.0DEG
 Test System:EVERFINE GO-2000B_V1 SYSTEM V2.0.288
 Humidity:52%
 Test Distance:5.850m [K=1.0000]
 Remarks:

WEC AND CCEC

Test:U:220.7V I:0.0557A P:10.66W PF:0.8670 Lamp Flux:623.626x1 lm		
NAME: FF3-FS1-9W-830-40D Black	TYPE:Downlight	SERIAL No.:
SPEC.:3000K	DIM.: L153mm*W45mm*H60mm	
MFR.: NEKO LIGHTING AG		

ρcc	80%			70%			50%			30%			10%			0
ρw	50%	30%	10%	50%	30%	10%	50%	30%	10%	50%	30%	10%	50%	30%	10%	0
ρfc	20%			20%			20%			20%			20%			0
RCR	RCR:Room Cavity Ratio						Wall Exitance Coefficients(WEC)									
0.0																
1.0	.145	.082	.026	.138	.079	.025	.126	.072	.023	.115	.066	.021	.104	.060	.019	
2.0	.135	.074	.023	.130	.072	.022	.120	.067	.021	.110	.062	.019	.101	.057	.018	
3.0	.127	.068	.020	.122	.066	.020	.114	.062	.019	.106	.058	.018	.098	.054	.017	
4.0	.120	.062	.018	.116	.061	.018	.109	.058	.017	.102	.055	.016	.095	.052	.016	
5.0	.113	.058	.017	.110	.056	.016	.104	.054	.016	.098	.052	.015	.092	.049	.015	
6.0	.108	.054	.015	.105	.053	.015	.099	.051	.015	.094	.049	.014	.090	.047	.014	
7.0	.103	.051	.014	.100	.050	.014	.095	.048	.014	.091	.047	.014	.087	.045	.013	
8.0	.098	.048	.013	.096	.047	.013	.092	.046	.013	.088	.045	.013	.084	.043	.013	
9.0	.094	.046	.013	.092	.045	.013	.089	.044	.012	.085	.043	.012	.082	.042	.012	
10.0	.091	.043	.012	.089	.043	.012	.085	.042	.012	.082	.041	.012	.079	.040	.011	

ρcc	80%			70%			50%			30%			10%			0
ρw	50%	30%	10%	50%	30%	10%	50%	30%	10%	50%	30%	10%	50%	30%	10%	0
ρfc	20%			20%			20%			20%			20%			0
RCR	RCR:Room Cavity Ratio						Ceiling Cavity Exitance Coefficients(CCEC)									
0.0	.190	.190	.190	.163	.163	.163	.111	.111	.111	.064	.064	.064	.020	.020	.020	
1.0	.169	.158	.147	.145	.135	.127	.099	.093	.088	.057	.054	.051	.018	.017	.016	
2.0	.151	.133	.117	.130	.114	.101	.089	.079	.071	.051	.046	.041	.016	.015	.013	
3.0	.137	.113	.095	.117	.098	.082	.081	.068	.057	.047	.040	.034	.015	.013	.011	
4.0	.125	.098	.078	.107	.085	.067	.074	.059	.047	.043	.035	.028	.014	.011	.009	
5.0	.115	.086	.065	.099	.074	.056	.068	.052	.040	.039	.030	.024	.013	.010	.008	
6.0	.106	.076	.054	.091	.066	.047	.063	.046	.034	.037	.027	.020	.012	.009	.007	
7.0	.099	.068	.046	.085	.059	.040	.059	.041	.029	.034	.024	.017	.011	.008	.006	
8.0	.093	.061	.040	.080	.053	.035	.055	.037	.025	.032	.022	.015	.010	.007	.005	
9.0	.087	.056	.035	.075	.049	.030	.052	.034	.021	.030	.020	.013	.010	.007	.004	
10.0	.083	.051	.030	.071	.045	.026	.049	.031	.019	.029	.019	.011	.009	.006	.004	

C Range: 0 - 360DEG
 C Interval: 15.0DEG
 Test Speed: HIGH
 Temperature:25.2DEG
 Operators:Cao Chengpei
 Test Date:2016-12-21

γ Range: 0 - 90DEG
 γ Interval: 1.0DEG
 Test System:EVERFINE GO-2000B_V1 SYSTEM V2.0.288
 Humidity:52%
 Test Distance:5.850m [K=1.0000]
 Remarks:

UGR(Unified Glare Rating) Table

Test:U:220.7V I:0.0557A P:10.66W PF:0.8670 Lamp Flux:623.626x1 lm		
NAME: FF3-FS1-9W-830-40D Black	TYPE:Downlight	SERIAL No.:
SPEC.:3000K	DIM.: L153mm*W45mm*H60mm	
MFR.: NEKO LIGHTING AG		

ceiling/cavity	0.7	0.7	0.5	0.5	0.3	0.7	0.7	0.5	0.5	0.3
walls	0.5	0.3	0.5	0.3	0.3	0.5	0.3	0.5	0.3	0.3
working plane	0.2	0.2	0.2	0.2	0.2	0.2	0.2	0.2	0.2	0.2
Room dimensions	Viewed crosswise					Viewed endwise				
x = 2H y = 2H	3.4	4.1	3.6	4.2	4.4	3.4	4.1	3.6	4.2	4.4
3H	3.2	3.9	3.5	4.1	4.3	3.2	3.9	3.5	4.1	4.3
4H	3.2	3.8	3.4	4.0	4.2	3.2	3.8	3.4	4.0	4.2
6H	3.1	3.7	3.4	3.9	4.1	3.1	3.7	3.4	3.9	4.1
8H	3.0	3.6	3.3	3.8	4.1	3.0	3.6	3.3	3.9	4.1
12H	3.0	3.5	3.3	3.8	4.1	3.0	3.5	3.3	3.8	4.1
4H 2H	3.2	3.8	3.4	4.0	4.2	3.2	3.8	3.4	4.0	4.2
3H	3.0	3.6	3.3	3.8	4.1	3.0	3.6	3.3	3.8	4.1
4H	2.9	3.4	3.3	3.7	4.0	2.9	3.4	3.3	3.7	4.0
6H	2.8	3.3	3.2	3.6	3.9	2.8	3.3	3.2	3.6	3.9
8H	2.8	3.2	3.1	3.5	3.9	2.8	3.2	3.2	3.5	3.9
12H	2.7	3.1	3.1	3.5	3.8	2.7	3.1	3.1	3.5	3.9
8H 4H	2.8	3.2	3.1	3.5	3.9	2.8	3.2	3.2	3.5	3.9
6H	2.7	3.0	3.1	3.4	3.8	2.7	3.0	3.1	3.4	3.8
8H	2.6	2.9	3.0	3.3	3.7	2.6	2.9	3.0	3.3	3.8
12H	2.5	2.8	3.0	3.2	3.7	2.5	2.8	3.0	3.2	3.7
12H 4H	2.7	3.1	3.1	3.5	3.8	2.7	3.1	3.1	3.5	3.8
6H	2.6	2.9	3.0	3.3	3.7	2.6	2.9	3.0	3.3	3.8
8H	2.5	2.8	3.0	3.2	3.7	2.5	2.8	3.0	3.2	3.7
Variations with the observer position at spacings:										
S = 1.0H	+ 3.7 / - 5.0					+ 3.7 / - 5.3				
1.5H	+ 5.3 / - 4.1					+ 5.3 / - 4.2				
2.0H	+ 4.1 / - 3.5					+ 4.0 / - 3.9				

CIE Pub.117 Corrected 623.6 lm Total Lamp Luminous Flux. (8log(F/F0) = -1.6)

C Range: 0 - 360DEG
 C Interval: 15.0DEG
 Test Speed: HIGH
 Temperature:25.2DEG
 Operators:Cao Chengpei
 Test Date:2016-12-21

γ Range: 0 - 90DEG
 γ Interval: 1.0DEG
 Test System:EVERFINE GO-2000B_V1 SYSTEM V2.0.288
 Humidity:52%
 Test Distance:5.850m [K=1.0000]
 Remarks:

UTILIZATION FACTORS TABLE

Test:U:220.7V I:0.0557A P:10.66W PF:0.8670 Lamp Flux:623.626x1 lm		
NAME: FF3-FS1-9W-830-40D Black	TYPE:Downlight	SERIAL No.:
SPEC.:3000K	DIM.: L153mm*W45mm*H60mm	
MFR.: NEKO LIGHTING AG		

REFLECTANCE										
Ceiling	0.8	0.8	0.8	0.7	0.7	0.7	0.5	0.5	0.5	0
Walls	0.7	0.5	0.3	0.7	0.5	0.3	0.7	0.5	0.3	0
Working plane	0.2	0.2	0.2	0.2	0.2	0.2	0.2	0.2	0.2	0
ROOM INDEX	UTILIZATION FACTORS(PERCENT) $k(RI) \times RCR = 5$									
k = 0.60	91	85	82	90	85	82	90	85	82	78
0.80	98	93	89	97	92	89	96	92	89	86
1.00	102	97	93	101	96	93	99	96	93	89
1.25	105	101	97	104	100	97	102	99	96	92
1.50	108	103	100	106	103	100	104	101	99	95
2.00	110	106	103	108	105	102	106	103	101	96
2.50	111	108	105	110	107	104	107	104	102	97
3.00	113	110	107	111	108	106	108	106	104	98
4.00	115	112	110	112	110	109	109	107	106	99
5.00	116	114	112	114	112	110	110	108	107	100
ROOM INDEX	UF(total)									Direct
According to DIN EN 13032-2 2004			Suspended				SHRNOM = 1.25			

C Range: 0 - 360DEG
 C Interval: 15.0DEG
 Test Speed: HIGH
 Temperature:25.2DEG
 Operators:Cao Chengpei
 Test Date:2016-12-21

γ Range: 0 - 90DEG
 γ Interval: 1.0DEG
 Test System:EVERFINE GO-2000B_V1 SYSTEM V2.0.288
 Humidity:52%
 Test Distance:5.850m [K=1.0000]
 Remarks:

ISOCANDELA DIAGRAM

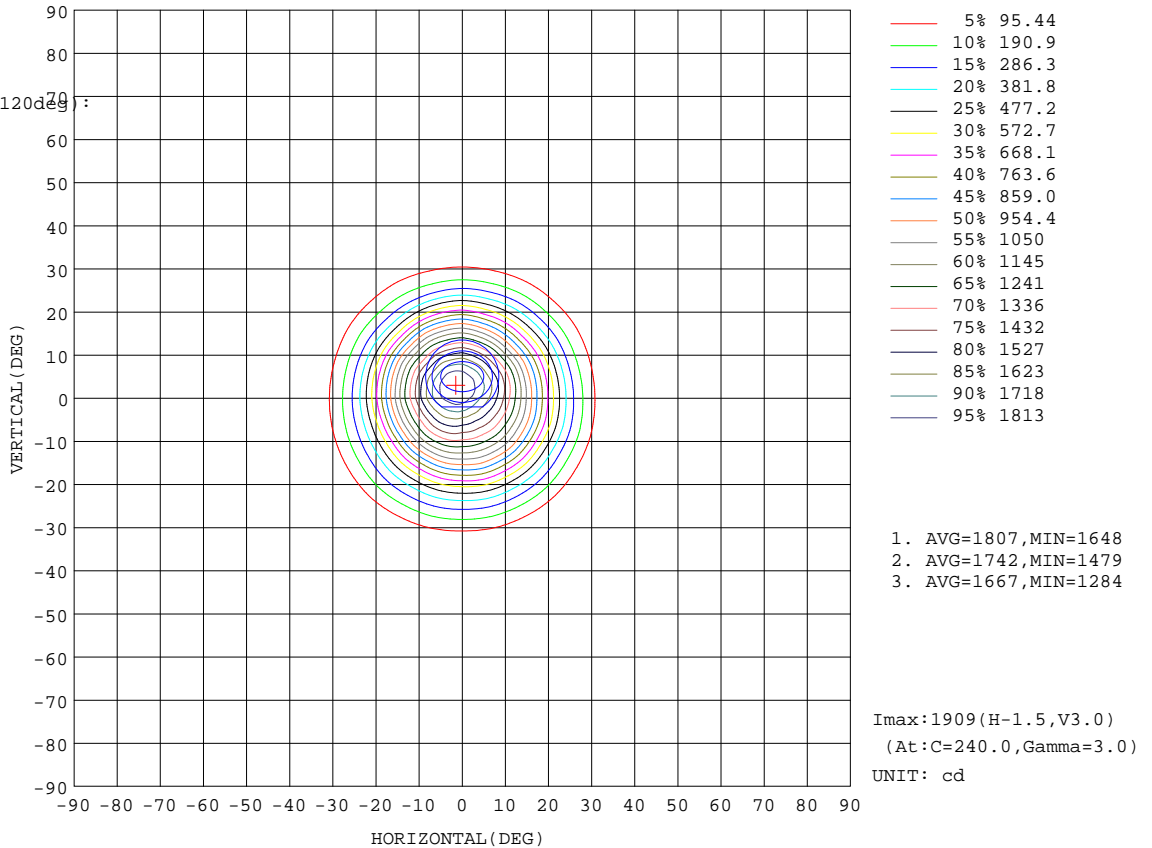
Test:U:220.7V I:0.0557A P:10.66W PF:0.8670 Lamp Flux:623.626x1 lm		
NAME: FF3-FS1-9W-830-40D Black	TYPE:Downlight	SERIAL No.:
SPEC.:3000K	DIM.: L153mm*W45mm*H60mm	
MFR.: NEKO LIGHTING AG		

Conical surface Flux(90deg):

619.29 lm
%lum = 99.3%
%lamp = 99.3%

Conical surface Flux(120deg):

622.79 lm
%lum = 99.9%
%lamp = 99.9%



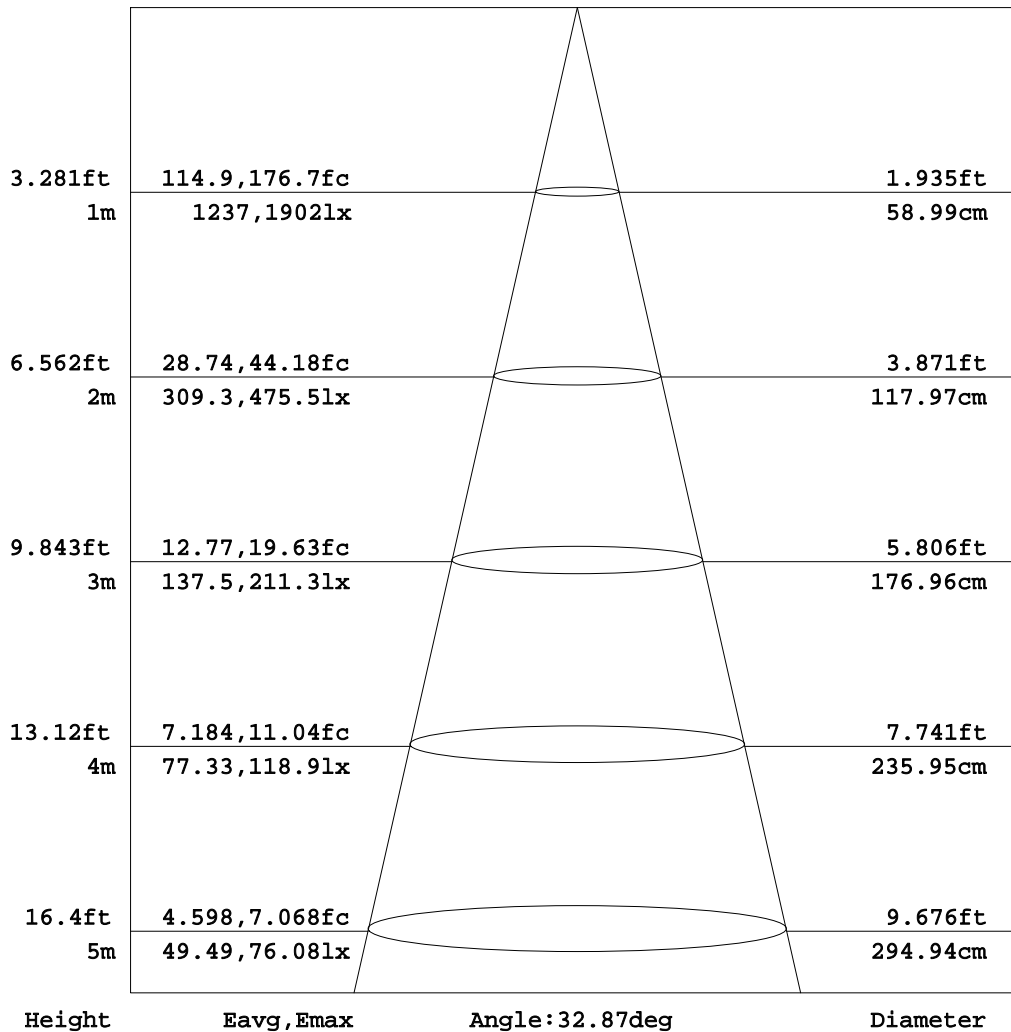
C Range: 0 - 360DEG
C Interval: 15.0DEG
Test Speed: HIGH
Temperature:25.2DEG
Operators:Cao Chengpei
Test Date:2016-12-21

γ Range: 0 - 90DEG
γ Interval: 1.0DEG
Test System:EVERFINE GO-2000B_V1 SYSTEM V2.0.288
Humidity:52%
Test Distance:5.850m [K=1.0000]
Remarks:

AAI Figure

Test:U:220.7V I:0.0557A P:10.66W PF:0.8670 Lamp Flux:623.626x1 lm		
NAME: FF3-FS1-9W-830-40D Black	TYPE:Downlight	SERIAL No.:
SPEC.:3000K	DIM.: L153mm*W45mm*H60mm	
MFR.: NEKO LIGHTING AG		

Flux out:363.3 lm



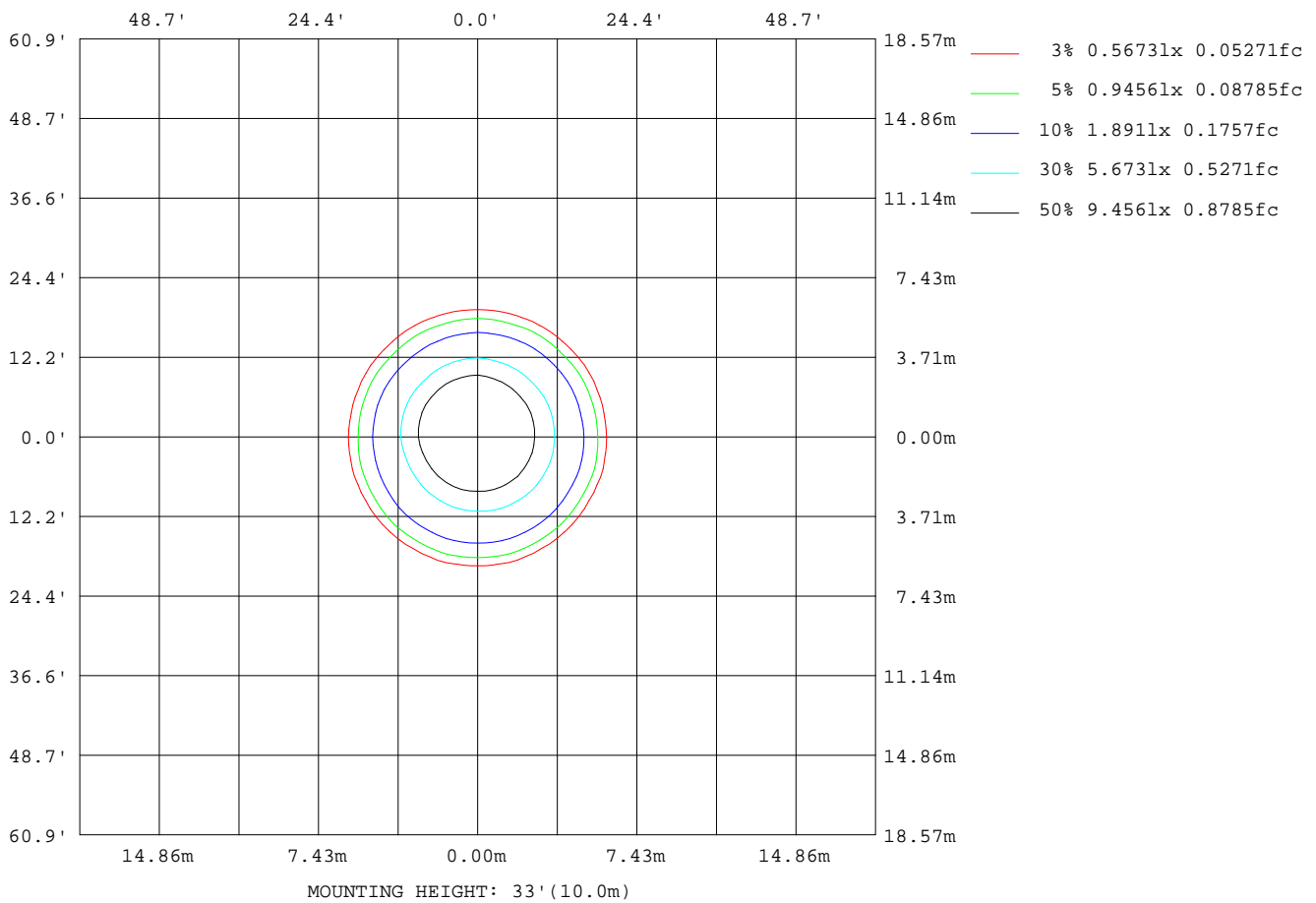
Note:The Curves indicate the illuminated area and the average illumination when the luminaire is at different distance.

C Range: 0 - 360DEG
C Interval: 15.0DEG
Test Speed: HIGH
Temperature:25.2DEG
Operators:Cao Chengpei
Test Date:2016-12-21

γ Range: 0 - 90DEG
γ Interval: 1.0DEG
Test System:EVERFINE GO-2000B_V1 SYSTEM V2.0.288
Humidity:52%
Test Distance:5.850m [K=1.0000]
Remarks:

ISOLUX DIAGRAM

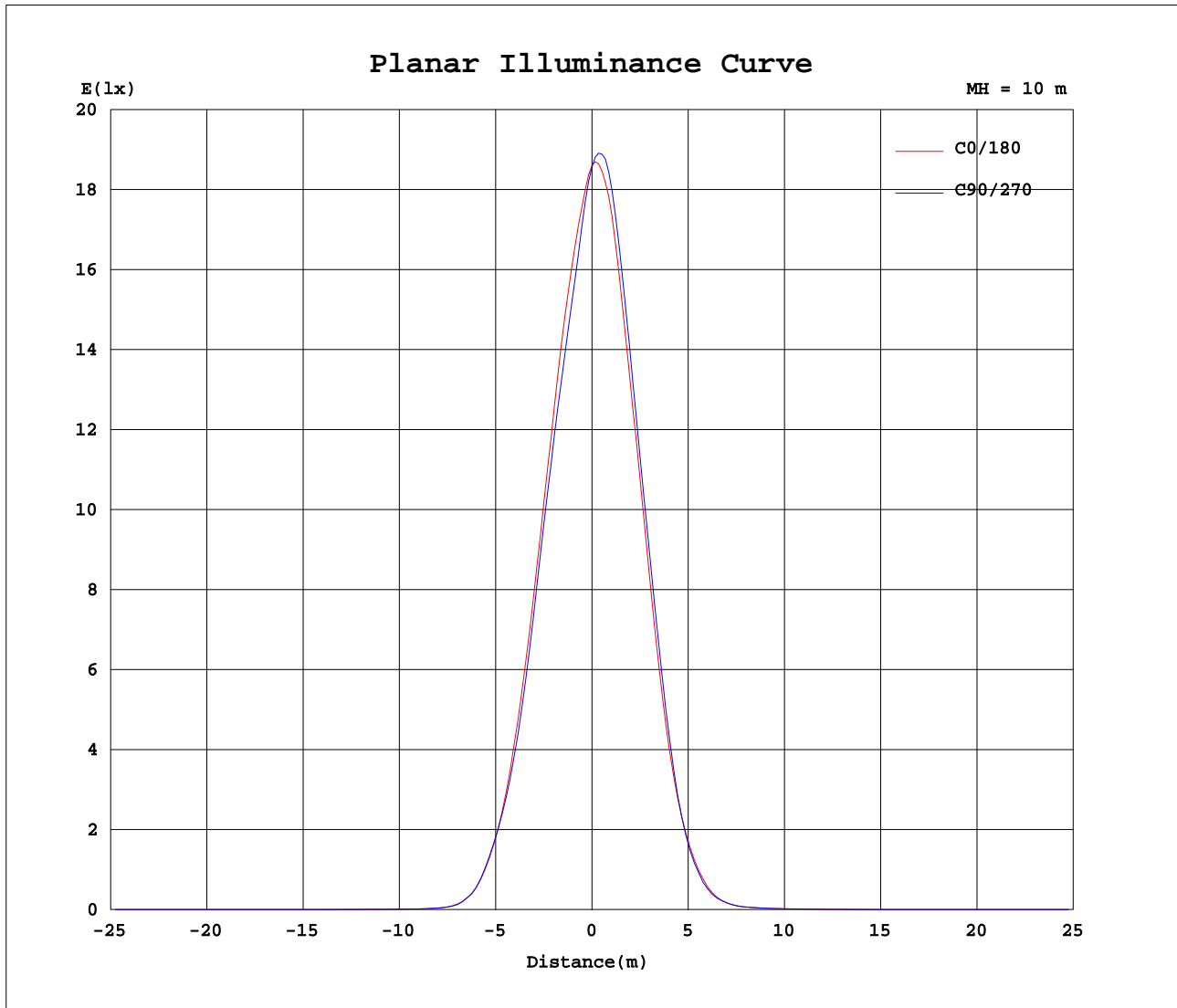
Test:U:220.7V I:0.0557A P:10.66W PF:0.8670 Lamp Flux:623.626x1 lm		
NAME: FF3-FS1-9W-830-40D Black	TYPE:Downlight	SERIAL No.:
SPEC.:3000K	DIM.: L153mm*W45mm*H60mm	
MFR.: NEKO LIGHTING AG		



C Range: 0 - 360DEG
C Interval: 15.0DEG
Test Speed: HIGH
Temperature:25.2DEG
Operators:Cao Chengpei
Test Date:2016-12-21

γ Range: 0 - 90DEG
γ Interval: 1.0DEG
Test System:EVERFINE GO-2000B_V1 SYSTEM V2.0.288
Humidity:52%
Test Distance:5.850m [K=1.0000]
Remarks:

Planar Illuminance Curve



C Range: 0 - 360DEG
 C Interval: 15.0DEG
 Test Speed: HIGH
 Temperature: 25.2DEG
 Operators: Cao Chengpei
 Test Date: 2016-12-21

γ Range: 0 - 90DEG
 γ Interval: 1.0DEG
 Test System: EVERFINE GO-2000B_V1 SYSTEM V2.0.288
 Humidity: 52%
 Test Distance: 5.850m [K=1.0000]
 Remarks:

Photometric Data Table [cd]

G/C	0.0	15.0	30.0	45.0	60.0	75.0	90.0	105.0	120.0	135.0
0.0	1860	1861	1858	1860	1856	1860	1857	1860	1860	1862
3.0	1762	1744	1724	1716	1703	1712	1713	1733	1747	1773
6.0	1631	1596	1564	1549	1530	1535	1540	1568	1591	1625
9.0	1469	1437	1406	1394	1374	1375	1372	1404	1425	1449
12.0	1260	1243	1222	1217	1202	1194	1189	1210	1224	1243
15.0	1038	1036	1023	1026	1005	1003	984.7	994.5	994.2	1009
18.0	805.3	809.8	797.8	795.9	776.2	772.2	753.3	754.8	747.5	757.5
21.0	583.0	588.5	572.1	574.5	558.4	556.0	539.5	539.4	528.4	533.7
24.0	385.9	392.3	379.6	385.1	377.1	377.8	368.2	369.2	359.7	361.5
27.0	231.4	238.3	232.8	238.6	236.2	239.4	235.6	237.1	231.6	232.7
30.0	117.5	124.6	116.0	122.4	118.0	124.9	119.6	125.3	119.4	124.5
33.0	50.24	48.12	48.00	46.87	48.70	48.48	49.23	49.36	51.71	51.97
36.0	17.73	17.45	16.20	16.37	15.88	16.62	16.74	17.98	19.31	21.10
39.0	7.983	7.969	7.517	7.557	7.505	7.988	8.289	8.863	9.284	10.21
42.0	4.827	4.671	4.427	4.320	4.167	4.461	4.726	5.160	5.460	6.055
45.0	4.120	3.820	3.694	3.626	3.583	3.754	3.840	4.130	4.526	4.940
48.0	3.277	3.005	2.896	2.850	2.826	2.958	2.964	3.143	3.502	3.929
51.0	2.283	2.092	1.991	1.956	1.906	1.998	1.981	2.132	2.328	2.650
54.0	1.536	1.486	1.421	1.397	1.365	1.386	1.412	1.475	1.553	1.722
57.0	1.194	1.167	1.115	1.090	1.070	1.083	1.096	1.152	1.205	1.307
60.0	0.9212	0.8897	0.8508	0.8237	0.8018	0.8087	0.8231	0.8705	0.9275	1.030
63.0	0.6953	0.6618	0.6315	0.6044	0.5782	0.5916	0.6037	0.6426	0.7081	0.7684
66.0	0.4843	0.4618	0.4332	0.4128	0.3799	0.4021	0.4097	0.4469	0.4950	0.5470
69.0	0.3052	0.2829	0.2562	0.2381	0.2178	0.2232	0.2392	0.2658	0.3010	0.3659
72.0	0.1624	0.1334	0.0862	0.0595	0.0626	0.0489	0.0692	0.0615	0.1076	0.1862
75.0	0.0554	0.0341	0.0512	0.0319	0.0469	0.0320	0.0490	0.0298	0.0533	0.0341
78.0	0.0448	0.0298	0.0405	0.0298	0.0426	0.0298	0.0426	0.0277	0.0427	0.0298
81.0	0.0342	0.0192	0.0320	0.0213	0.0341	0.0192	0.0341	0.0213	0.0362	0.0277
84.0	0.0277	0.0192	0.0256	0.0213	0.0277	0.0170	0.0299	0.0213	0.0299	0.0213
87.0	0.0234	0.0192	0.0213	0.0213	0.0213	0.0170	0.0235	0.0213	0.0235	0.0213
90.0	0.0192	0.0192	0.0213	0.0213	0.0170	0.0170	0.0234	0.0213	0.0213	0.0213
G/C	150.0	165.0	180.0	195.0	210.0	225.0	240.0	255.0	270.0	285.0
0.0	1864	1863	1861	1858	1860	1856	1860	1857	1860	1862
3.0	1798	1822	1854	1868	1886	1899	1910	1908	1896	1880
6.0	1653	1698	1760	1783	1814	1834	1852	1842	1825	1794
9.0	1466	1508	1566	1593	1628	1631	1655	1639	1643	1609
12.0	1255	1286	1340	1367	1394	1387	1414	1402	1411	1381
15.0	1015	1048	1098	1116	1144	1140	1158	1155	1158	1125
18.0	756.2	782.4	826.7	850.6	873.0	864.5	888.8	884.2	893.2	858.3
21.0	525.8	538.1	569.6	582.9	596.9	582.1	601.0	607.0	615.7	591.1
24.0	352.9	353.6	366.2	367.7	368.2	351.2	360.0	363.8	375.6	366.7
27.0	223.7	221.0	219.6	216.8	217.7	205.3	207.7	203.4	209.4	206.4
30.0	116.0	120.0	118.3	113.6	115.7	108.0	108.9	104.5	105.4	104.1
33.0	53.19	52.15	53.20	54.05	51.82	53.04	50.90	50.87	49.16	49.78
36.0	21.20	22.28	23.71	24.76	26.00	24.64	25.29	24.44	24.24	22.77
39.0	10.79	11.87	13.30	14.36	15.04	14.65	15.14	14.16	13.33	11.83
42.0	6.530	7.602	8.511	9.257	9.829	10.38	10.40	9.725	9.025	7.881
45.0	5.308	5.954	6.622	7.230	7.680	7.918	8.186	7.392	6.888	6.532
48.0	4.262	4.659	5.215	5.696	6.077	6.173	6.384	5.824	5.598	5.471
51.0	2.916	3.265	3.653	3.964	4.253	4.363	4.621	4.323	4.190	3.832
54.0	1.846	1.977	2.240	2.366	2.478	2.574	2.705	2.686	2.576	2.290
57.0	1.469	1.505	1.556	1.620	1.690	1.695	1.782	1.782	1.720	1.601
60.0	1.115	1.222	1.239	1.296	1.352	1.394	1.447	1.473	1.407	1.277
63.0	0.8234	0.9066	0.9768	1.017	1.075	1.092	1.151	1.219	1.141	0.9871
66.0	0.5739	0.6534	0.7533	0.7910	0.8385	0.8315	0.8811	0.9360	0.8682	0.7591
69.0	0.3756	0.4404	0.5317	0.5715	0.6468	0.6226	0.6595	0.6823	0.6233	0.5501
72.0	0.2031	0.2487	0.3080	0.3480	0.4550	0.4139	0.4337	0.4545	0.4167	0.3500
75.0	0.0554	0.0277	0.0319	0.0521	0.0467	0.0723	0.1290	0.1147	0.1269	0.0697
78.0	0.0469	0.0277	0.0149	0.0384	0.0320	0.0448	0.0320	0.0512	0.0298	0.0490
81.0	0.0384	0.0213	0.0128	0.0320	0.0170	0.0405	0.0255	0.0426	0.0213	0.0362
84.0	0.0299	0.0213	0.0128	0.0235	0.0128	0.0277	0.0128	0.0299	0.0128	0.0320
87.0	0.0256	0.0213	0.0128	0.0171	0.0128	0.0192	0.0128	0.0214	0.0128	0.0234
90.0	0.0213	0.0213	0.0128	0.0128	0.0128	0.0149	0.0128	0.0149	0.0128	0.0170
G/C	300.0	315.0	330.0	345.0						
0.0	1860	1862	1864	1863						
3.0	1862	1842	1824	1798						
6.0	1773	1739	1713	1677						
9.0	1589	1557	1543	1510						
12.0	1360	1331	1325	1296						
15.0	1104	1077	1078	1054						
18.0	842.1	825.7	831.0	821.1						
21.0	593.2	582.4	593.2	590.3						

C Range: 0 - 360DEG

C Interval: 15.0DEG

Test Speed: HIGH

Temperature: 25.2DEG

Operators: Cao Chengpei

Test Date: 2016-12-21

γ Range: 0 - 90DEG

γ Interval: 1.0DEG

Test System: EVERFINE GO-2000B_V1 SYSTEM V2.0.288

Humidity: 52%

Test Distance: 5.850m [K=1.0000]

Remarks:

Photometric Data Table [cd]

24.0	377.1	375.7	384.4	383.4
27.0	214.5	215.4	225.9	223.5
30.0	108.9	108.7	117.3	114.6
33.0	49.02	50.46	49.46	49.75
36.0	22.14	20.58	20.54	18.35
39.0	10.75	9.624	9.200	8.312
42.0	7.144	6.287	5.747	5.260
45.0	5.881	5.200	4.678	4.150
48.0	4.929	4.316	3.875	3.362
51.0	3.500	3.037	2.682	2.400
54.0	2.121	1.894	1.766	1.650
57.0	1.518	1.394	1.313	1.256
60.0	1.209	1.089	1.013	0.9636
63.0	0.9427	0.8336	0.7574	0.7250
66.0	0.7129	0.6035	0.5489	0.5140
69.0	0.5127	0.4053	0.3551	0.3306
72.0	0.3316	0.2327	0.1762	0.1773
75.0	0.0404	0.0600	0.0405	0.0575
78.0	0.0319	0.0469	0.0277	0.0448
81.0	0.0212	0.0383	0.0233	0.0341
84.0	0.0128	0.0320	0.0107	0.0235
87.0	0.0128	0.0192	0.0107	0.0192
90.0	0.0128	0.0149	0.0128	0.0149

C Range: 0 - 360DEG
C Interval: 15.0DEG
Test Speed: HIGH
Temperature: 25.2DEG
Operators: Cao Chengpei
Test Date: 2016-12-21

γ Range: 0 - 90DEG
γ Interval: 1.0DEG
Test System: EVERFINE GO-2000B_V1 SYSTEM V2.0.288
Humidity: 52%
Test Distance: 5.850m [K=1.0000]
Remarks: