

LED Downlight FUSION Series FF3-FS1-9W-830-24D Specular



Light Output Ratio:	100.0%	
Luminaire Power:	10.59 W	
SHR Nominal:	0.00	Calculated using the TM5
SHR Maximum:	1.00	fine grid method.

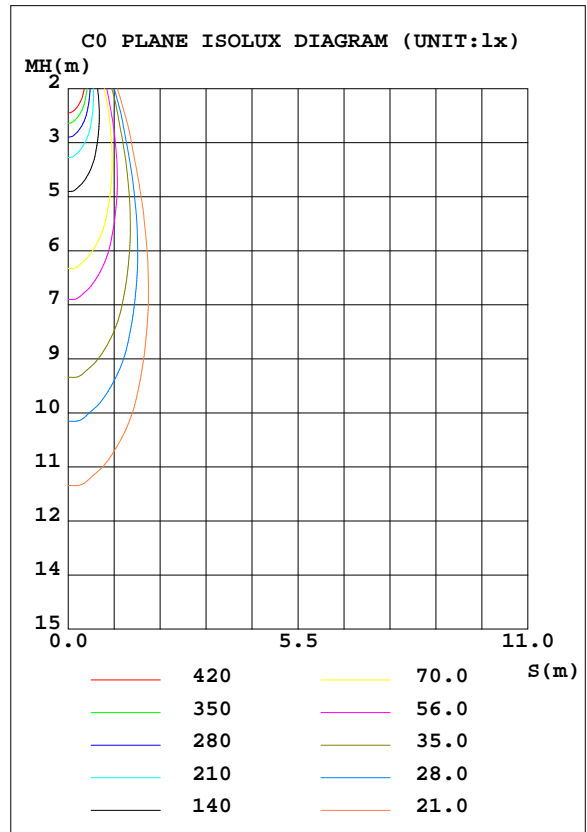
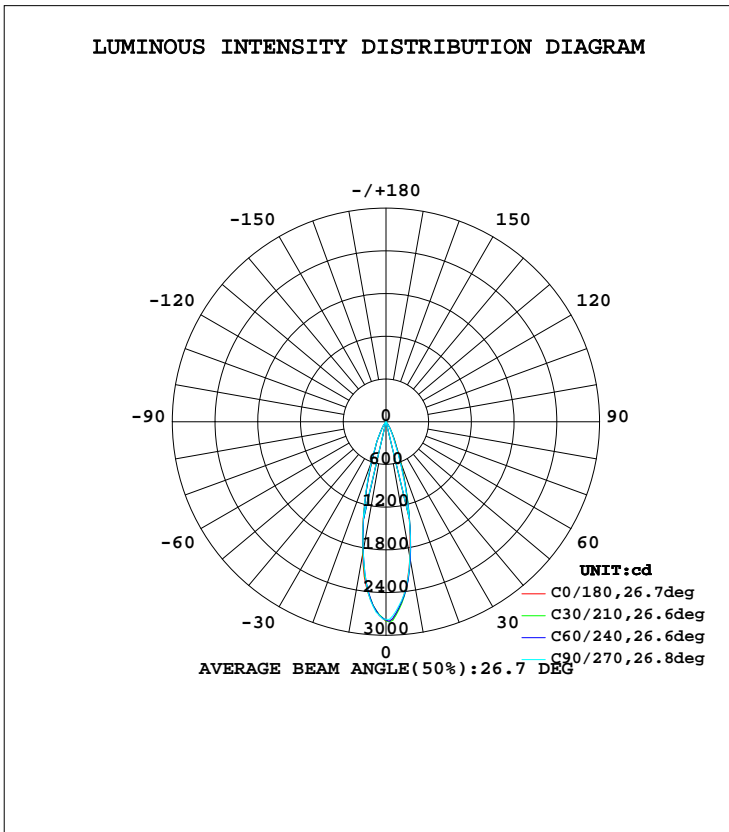
C Range: 0 - 360DEG
C Interval: 15.0DEG
Test Speed: HIGH
Temperature: 25.3DEG
Operators: Meng Yongjian
Test Date: 2017-06-15

γ Range: 0 - 90DEG
 γ Interval: 1.0DEG
Test System: EVERFINE GO-2000B_V1 SYSTEM V2.0.288
Humidity: 52%
Test Distance: 5.850m [K=1.0000]
Remarks:

LUMINAIRE PHOTOMETRIC TEST REPORT

Test:U:220.7V I:0.0552A P:10.59W PF:0.8645 Lamp Flux:728.809x1 lm		
NAME: FF3-FS1-9W-830-24D-Specular	TYPE:Downlight	SERIAL No.:
SPEC.:3000K	DIM.: L153mm*W45mm*H60mm	
MFR.: NEKO LIGHTING AG		

DATA OF LAMP		PHOTOMETRIC DATA			
MODEL	CREE-3000K	Imax(cd)	2813	S/MH(C0/180)	0.45
NOMINAL POWER(W)	11.0	LOR(%)	100.0	S/MH(C90/270)	0.45
RATED VOLTAGE(V)	220	TOTAL FLUX(lm)	728.81	η UP, DN(C0-180)	0.0, 49.9
NOMINAL FLUX(lm)	728.809	CIE CLASS	DIRECT	η UP, DN(C180-360)	0.0, 50.1
LAMPS INSIDE	1	η up(%)	0.0	CIBSE SHR NOM	0.00
TEST VOLTAGE(V)	220	η down(%)	100.0	CIBSE SHR MAX	1.00



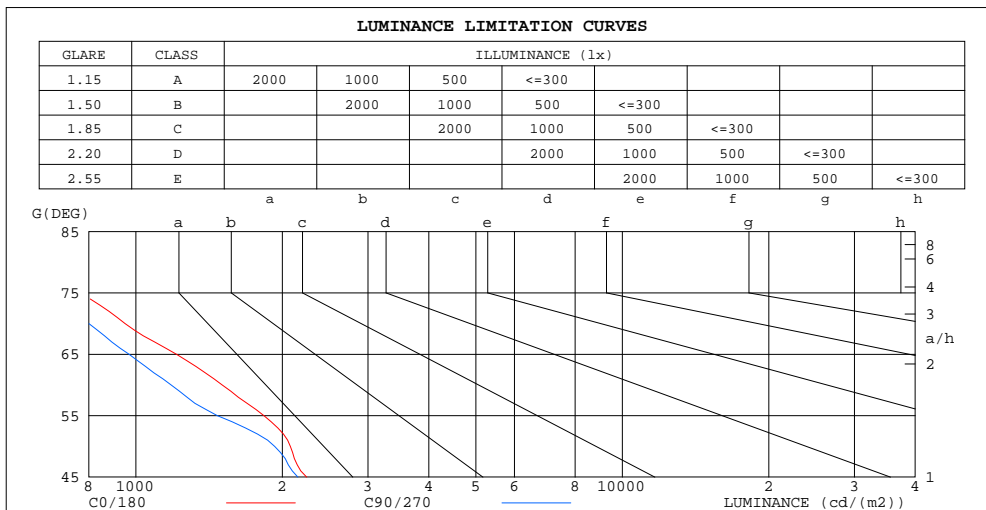
C Range: 0 - 360DEG
 C Interval: 15.0DEG
 Test Speed: HIGH
 Temperature: 25.3DEG
 Operators: Meng Yongjian
 Test Date: 2017-06-15

γ Range: 0 - 90DEG
 γ Interval: 1.0DEG
 Test System: EVERFINE GO-2000B_V1 SYSTEM V2.0.288
 Humidity: 52%
 Test Distance: 5.850m [K=1.0000]
 Remarks:

**ZONAL FLUX DIAGRAM
AND LUMINANCE LIMITATION CURVES**

ZONAL FLUX DIAGRAM:

γ	C0	C45	C90	C135	C180	C225	C270	C315	γ	Φ zone	Φ total	$\%lum, lamp$
10	1929	1981	1940	1927	1895	1825	1851	1876	0- 10	221.2	221.2	30.4,30.4
20	614.9	604.4	545.1	546.7	565.1	556.1	605.4	624.6	10- 20	316.8	538.0	73.8,73.8
30	139.4	133.0	124.3	125.4	128.6	124.7	138.9	142.0	20- 30	134.9	672.9	92.3,92.3
40	22.06	22.10	18.66	19.67	20.26	21.23	22.90	22.99	30- 40	36.46	709.3	97.3,97.3
50	9.132	8.754	8.482	8.148	8.209	8.501	9.154	8.880	40- 50	9.231	718.6	98.6,98.6
60	5.146	4.831	4.041	3.586	3.655	3.857	4.328	4.716	50- 60	5.576	724.1	99.4,99.4
70	2.224	2.167	1.873	1.770	1.862	1.888	2.047	2.131	60- 70	2.987	727.1	99.8,99.8
80	0.7005	0.6947	0.6239	0.6073	0.5918	0.6630	0.6989	0.7527	70- 80	1.306	728.4	99.9,99.9
90	0.1093	0.0787	0.0503	0.0525	0.0525	0.0809	0.0940	0.1050	80- 90	0.3862	728.8	100,100
100									90-100			
110									100-110			
120									110-120			
130									120-130			
140									130-140			
150									140-150			
160									150-160			
170									160-170			
180									170-180			
DEG	LUMINOUS INTENSITY:cd									UNIT:lm		



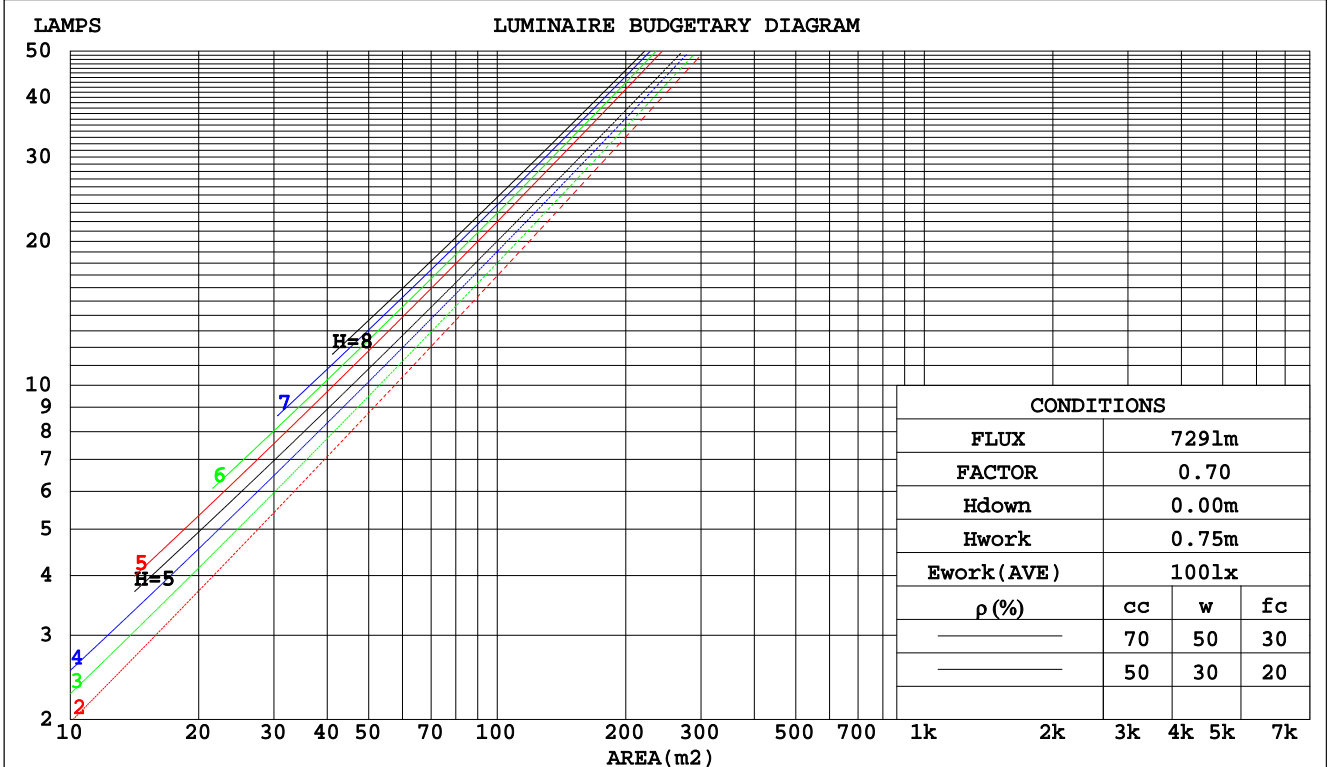
C Range: 0 - 360DEG
C Interval: 15.0DEG
Test Speed: HIGH
Temperature:25.3DEG
Operators:Meng Yongjian
Test Date:2017-06-15

γ Range: 0 - 90DEG
 γ Interval: 1.0DEG
Test System:EVERFINE GO-2000B_V1 SYSTEM V2.0.288
Humidity:52%
Test Distance:5.850m [K=1.0000]
Remarks:

CU AND LUMINAIRE BUDGETARY ESTIMATE DIAGRAM

Test:U:220.7V I:0.0552A P:10.59W PF:0.8645 Lamp Flux:728.809x1 lm		
NAME: FF3-FS1-9W-830-24D-Specular	TYPE:Downlight	SERIAL No.:
SPEC.:3000K	DIM.: L153mm*W45mm*H60mm	
MFR.: NEKO LIGHTING AG		

pcc	80%			70%			50%			30%			10%			0
	50%	30%	10%	50%	30%	10%	50%	30%	10%	50%	30%	10%	50%	30%	10%	0
pw																
pfc	20%			20%			20%			20%			20%			0
RCR	RCR:Room Cavity Ratio															
	Coefficients of Utilization(CU)															
0.0	1.19	1.19	1.19	1.16	1.16	1.16	1.11	1.11	1.11	1.06	1.06	1.06	1.02	1.02	1.02	1.00
1.0	1.12	1.10	1.09	1.10	1.09	1.07	1.06	1.05	1.04	1.03	1.02	1.01	.99	.98	.98	.96
2.0	1.07	1.04	1.01	1.05	1.02	.90	1.02	.90	.98	.99	.97	.96	.96	.95	.94	.92
3.0	1.02	.98	.95	1.00	.97	.94	.98	.95	.93	.96	.93	.91	.94	.92	.90	.89
4.0	.97	.93	.90	.96	.92	.89	.94	.91	.88	.92	.90	.87	.91	.88	.86	.85
5.0	.93	.89	.86	.93	.88	.85	.91	.87	.85	.89	.86	.84	.88	.85	.83	.82
6.0	.90	.85	.82	.89	.85	.82	.88	.84	.81	.87	.83	.81	.85	.83	.80	.79
7.0	.87	.82	.79	.86	.82	.79	.85	.81	.78	.84	.81	.78	.83	.80	.78	.77
8.0	.84	.79	.76	.83	.79	.76	.82	.78	.76	.81	.78	.75	.80	.77	.75	.74
9.0	.81	.77	.74	.81	.76	.74	.80	.76	.73	.79	.76	.73	.78	.75	.73	.72
10.0	.78	.74	.71	.78	.74	.71	.77	.74	.71	.77	.73	.71	.76	.73	.71	.70



C Range: 0 - 360DEG
 C Interval: 15.0DEG
 Test Speed: HIGH
 Temperature: 25.3DEG
 Operators: Meng Yongjian
 Test Date: 2017-06-15

γ Range: 0 - 90DEG
 γ Interval: 1.0DEG
 Test System: EVERFINE GO-2000B_V1 SYSTEM V2.0.288
 Humidity: 52%
 Test Distance: 5.850m [K=1.0000]
 Remarks:

WEC AND CCEC

Test:U:220.7V I:0.0552A P:10.59W PF:0.8645 Lamp Flux:728.809x1 lm		
NAME: FF3-FS1-9W-830-24D-Specular	TYPE:Downlight	SERIAL No.:
SPEC.:3000K	DIM.: L153mm*W45mm*H60mm	
MFR.: NEKO LIGHTING AG		

ρcc	80%			70%			50%			30%			10%			0
ρw	50%	30%	10%	50%	30%	10%	50%	30%	10%	50%	30%	10%	50%	30%	10%	0
ρfc	20%			20%			20%			20%			20%			0
RCR	RCR:Room Cavity Ratio						Wall Exitance Coefficients(WEC)									
0.0																
1.0	.145	.082	.026	.138	.079	.025	.126	.072	.023	.115	.066	.021	.104	.060	.019	
2.0	.135	.074	.023	.130	.071	.022	.119	.066	.021	.110	.062	.019	.101	.057	.018	
3.0	.126	.067	.020	.122	.065	.020	.113	.061	.019	.105	.058	.018	.098	.054	.017	
4.0	.119	.062	.018	.115	.060	.018	.107	.057	.017	.101	.054	.016	.094	.051	.016	
5.0	.112	.057	.017	.109	.056	.016	.102	.053	.016	.097	.051	.015	.091	.049	.015	
6.0	.106	.053	.015	.103	.052	.015	.098	.050	.015	.093	.048	.014	.088	.046	.014	
7.0	.101	.050	.014	.098	.049	.014	.094	.047	.014	.089	.046	.013	.085	.044	.013	
8.0	.096	.047	.013	.094	.046	.013	.090	.045	.013	.086	.044	.013	.082	.042	.012	
9.0	.092	.044	.012	.090	.044	.012	.086	.043	.012	.083	.042	.012	.080	.040	.012	
10.0	.088	.042	.012	.086	.042	.012	.083	.041	.011	.080	.040	.011	.077	.039	.011	

ρcc	80%			70%			50%			30%			10%			0
ρw	50%	30%	10%	50%	30%	10%	50%	30%	10%	50%	30%	10%	50%	30%	10%	0
ρfc	20%			20%			20%			20%			20%			0
RCR	RCR:Room Cavity Ratio						Ceiling Cavity Exitance Coefficients(CCEC)									
0.0	.190	.190	.190	.163	.163	.163	.111	.111	.111	.064	.064	.064	.020	.020	.020	
1.0	.169	.158	.147	.145	.135	.127	.099	.093	.088	.057	.054	.051	.018	.017	.016	
2.0	.151	.133	.117	.130	.114	.101	.089	.079	.071	.051	.046	.041	.016	.015	.013	
3.0	.137	.113	.095	.117	.098	.082	.081	.068	.058	.047	.040	.034	.015	.013	.011	
4.0	.125	.098	.078	.107	.085	.068	.074	.059	.048	.043	.035	.028	.014	.011	.009	
5.0	.114	.086	.065	.098	.074	.056	.068	.052	.040	.039	.030	.024	.013	.010	.008	
6.0	.106	.076	.055	.091	.066	.048	.063	.046	.034	.036	.027	.020	.012	.009	.007	
7.0	.098	.068	.047	.085	.059	.041	.058	.041	.029	.034	.024	.017	.011	.008	.006	
8.0	.092	.061	.040	.079	.053	.035	.055	.037	.025	.032	.022	.015	.010	.007	.005	
9.0	.086	.056	.035	.075	.048	.030	.052	.034	.022	.030	.020	.013	.010	.007	.004	
10.0	.082	.051	.031	.070	.044	.027	.049	.031	.019	.028	.018	.011	.009	.006	.004	

C Range: 0 - 360DEG
 C Interval: 15.0DEG
 Test Speed: HIGH
 Temperature:25.3DEG
 Operators:Meng Yongjian
 Test Date:2017-06-15

γ Range: 0 - 90DEG
 γ Interval: 1.0DEG
 Test System:EVERFINE GO-2000B_V1 SYSTEM V2.0.288
 Humidity:52%
 Test Distance:5.850m [K=1.0000]
 Remarks:

UGR(Unified Glare Rating) Table

Test:U:220.7V I:0.0552A P:10.59W PF:0.8645 Lamp Flux:728.809x1 lm		
NAME: FF3-FS1-9W-830-24D-Specular	TYPE:Downlight	SERIAL No.:
SPEC.:3000K	DIM.: L153mm*W45mm*H60mm	
MFR.: NEKO LIGHTING AG		

ceiling/cavity	0.7	0.7	0.5	0.5	0.3	0.7	0.7	0.5	0.5	0.3
walls	0.5	0.3	0.5	0.3	0.3	0.5	0.3	0.5	0.3	0.3
working plane	0.2	0.2	0.2	0.2	0.2	0.2	0.2	0.2	0.2	0.2
Room dimensions	Viewed crosswise					Viewed endwise				
x = 2H y = 2H	8.1	8.8	8.3	9.0	9.1	7.2	7.9	7.5	8.1	8.3
3H	8.3	9.0	8.6	9.2	9.4	7.4	8.1	7.7	8.3	8.4
4H	8.4	9.0	8.6	9.2	9.4	7.5	8.1	7.7	8.3	8.5
6H	8.4	9.0	8.6	9.2	9.4	7.5	8.0	7.7	8.3	8.5
8H	8.4	8.9	8.6	9.2	9.4	7.4	8.0	7.7	8.3	8.5
12H	8.3	8.9	8.6	9.1	9.4	7.4	8.0	7.7	8.2	8.5
4H 2H	8.1	8.7	8.4	8.9	9.2	7.3	7.9	7.6	8.1	8.3
3H	8.4	8.9	8.7	9.2	9.5	7.6	8.1	7.9	8.4	8.6
4H	8.5	9.0	8.8	9.3	9.6	7.6	8.1	8.0	8.4	8.7
6H	8.5	8.9	8.9	9.3	9.6	7.7	8.1	8.0	8.4	8.8
8H	8.5	8.9	8.9	9.3	9.6	7.7	8.1	8.1	8.4	8.8
12H	8.5	8.9	8.9	9.2	9.6	7.7	8.0	8.1	8.4	8.8
8H 4H	8.4	8.8	8.8	9.2	9.5	7.6	8.0	8.0	8.4	8.7
6H	8.5	8.8	8.9	9.2	9.6	7.7	8.0	8.1	8.4	8.8
8H	8.5	8.8	8.9	9.2	9.7	7.7	8.0	8.1	8.4	8.8
12H	8.5	8.8	9.0	9.2	9.7	7.7	8.0	8.2	8.4	8.9
12H 4H	8.4	8.8	8.8	9.1	9.5	7.6	7.9	8.0	8.3	8.7
6H	8.4	8.7	8.9	9.2	9.6	7.6	7.9	8.1	8.4	8.8
8H	8.5	8.7	8.9	9.2	9.6	7.7	7.9	8.1	8.4	8.8
Variations with the observer position at spacings:										
S = 1.0H	+ 1.5 / - 1.3					+ 1.4 / - 1.5				
1.5H	+ 2.7 / - 1.1					+ 2.4 / - 1.1				
2.0H	+ 1.0 / - 0.9					+ 1.0 / - 1.3				

CIE Pub.117 Corrected 728.8 lm Total Lamp Luminous Flux. (8log(F/F0) = -1.1)

C Range: 0 - 360DEG
 C Interval: 15.0DEG
 Test Speed: HIGH
 Temperature:25.3DEG
 Operators:Meng Yongjian
 Test Date:2017-06-15

γ Range: 0 - 90DEG
 γ Interval: 1.0DEG
 Test System:EVERFINE GO-2000B_V1 SYSTEM V2.0.288
 Humidity:52%
 Test Distance:5.850m [K=1.0000]
 Remarks:

UTILIZATION FACTORS TABLE

Test:U:220.7V I:0.0552A P:10.59W PF:0.8645 Lamp Flux:728.809x1 lm		
NAME: FF3-FS1-9W-830-24D-Specular	TYPE:Downlight	SERIAL No.:
SPEC.:3000K	DIM.: L153mm*W45mm*H60mm	
MFR.: NEKO LIGHTING AG		

REFLECTANCE										
Ceiling	0.8	0.8	0.8	0.7	0.7	0.7	0.5	0.5	0.5	0
Walls	0.7	0.5	0.3	0.7	0.5	0.3	0.7	0.5	0.3	0
Working plane	0.2	0.2	0.2	0.2	0.2	0.2	0.2	0.2	0.2	0
ROOM INDEX	UTILIZATION FACTORS(PERCENT) $k(RI) \times RCR = 5$									
k = 0.60	90	84	81	89	84	80	89	83	80	77
0.80	97	92	88	96	91	88	95	91	88	84
1.00	101	96	92	100	95	92	99	95	92	88
1.25	105	100	97	104	99	96	102	98	95	91
1.50	107	103	100	106	102	99	104	100	98	94
2.00	109	105	103	108	104	102	105	102	100	95
2.50	111	107	105	109	106	104	106	104	102	96
3.00	112	109	107	111	108	106	107	105	103	97
4.00	114	112	110	112	110	108	109	107	106	99
5.00	115	113	112	113	112	110	109	108	107	100
ROOM INDEX	UF(total)									Direct
According to DIN EN 13032-2 2004			Suspended				SHRNOM = 1.25			

C Range: 0 - 360DEG
 C Interval: 15.0DEG
 Test Speed: HIGH
 Temperature:25.3DEG
 Operators:Meng Yongjian
 Test Date:2017-06-15

γ Range: 0 - 90DEG
 γ Interval: 1.0DEG
 Test System:EVERFINE GO-2000B_V1 SYSTEM V2.0.288
 Humidity:52%
 Test Distance:5.850m [K=1.0000]
 Remarks:

ISOCANDELA DIAGRAM

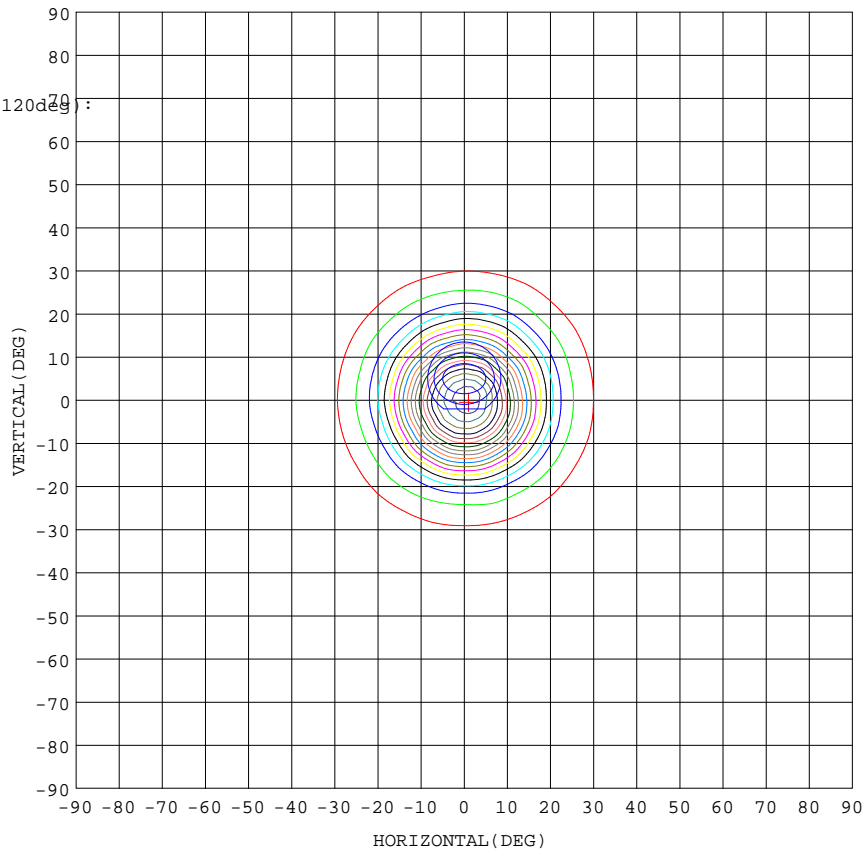
Test:U:220.7V I:0.0552A P:10.59W PF:0.8645 Lamp Flux:728.809x1 lm		
NAME: FF3-FS1-9W-830-24D-Specular	TYPE:Downlight	SERIAL No.:
SPEC.:3000K	DIM.: L153mm*W45mm*H60mm	
MFR.: NEKO LIGHTING AG		

Conical surface Flux(90deg):

714.66 lm
%lum = 98.1%
%lamp = 98.1%

Conical surface Flux(120deg):

724.13 lm
%lum = 99.4%
%lamp = 99.4%



1. AVG=2426, MIN=2071
2. AVG=2330, MIN=1704
3. AVG=2204, MIN=1350

Imax:2807(H1.0,V-0.5)
(At:C=45.0,Gamma=1.0)
UNIT: cd

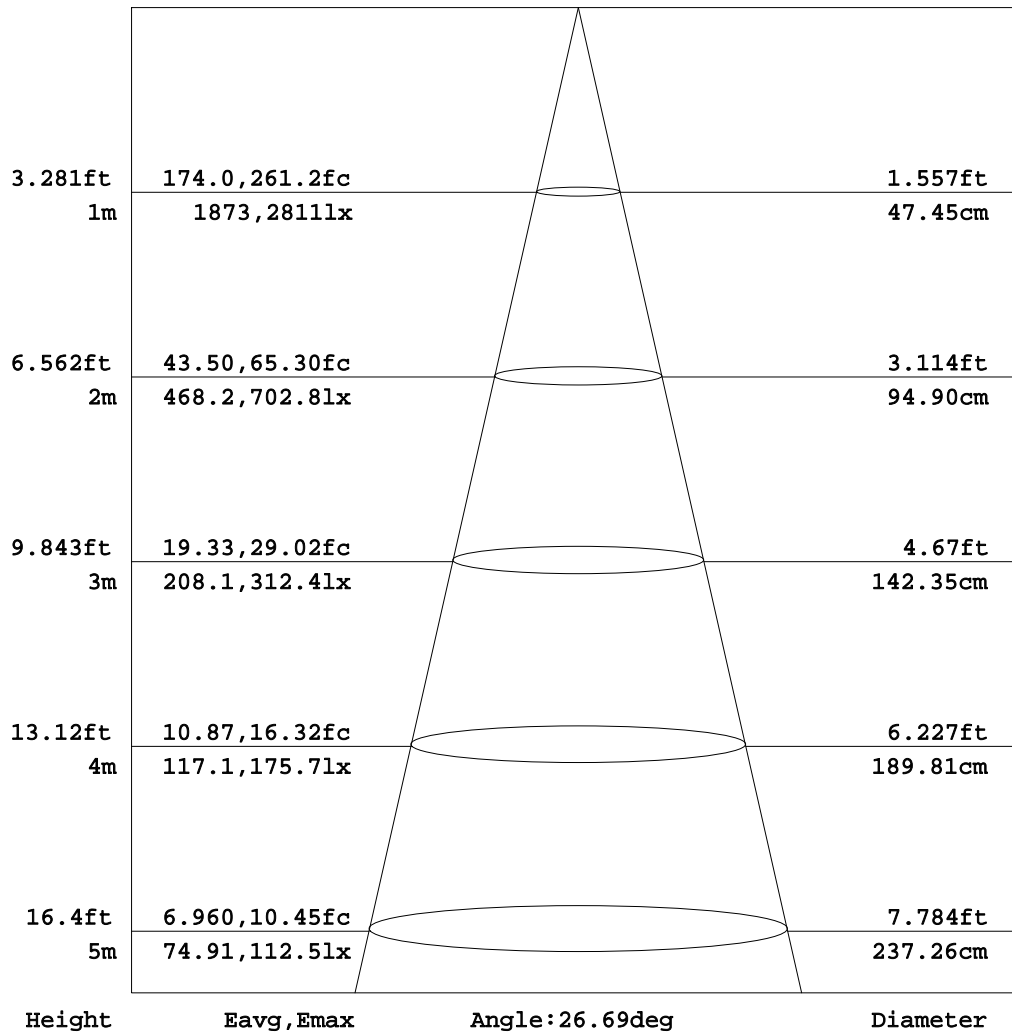
C Range: 0 - 360DEG
C Interval: 15.0DEG
Test Speed: HIGH
Temperature:25.3DEG
Operators:Meng Yongjian
Test Date:2017-06-15

γ Range: 0 - 90DEG
γ Interval: 1.0DEG
Test System:EVERFINE GO-2000B_V1 SYSTEM V2.0.288
Humidity:52%
Test Distance:5.850m [K=1.0000]
Remarks:

AAI Figure

Test:U:220.7V I:0.0552A P:10.59W PF:0.8645 Lamp Flux:728.809x1 lm		
NAME: FF3-FS1-9W-830-24D-Specular	TYPE:Downlight	SERIAL No.:
SPEC.:3000K	DIM.: L153mm*W45mm*H60mm	
MFR.: NEKO LIGHTING AG		

Flux out:365.8 lm



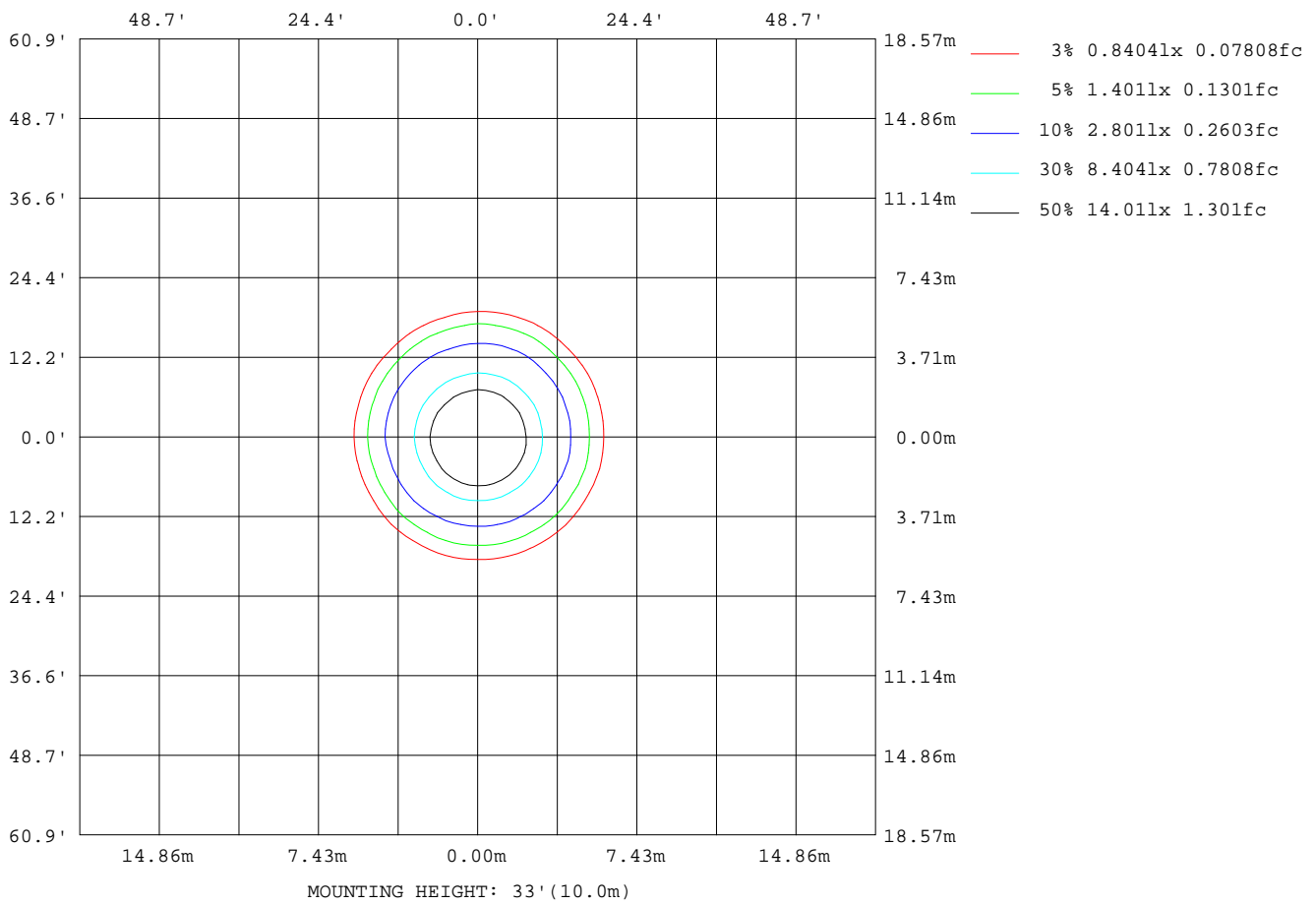
Note:The Curves indicate the illuminated area and the average illumination when the luminaire is at different distance.

C Range: 0 - 360DEG
C Interval: 15.0DEG
Test Speed: HIGH
Temperature:25.3DEG
Operators:Meng Yongjian
Test Date:2017-06-15

γ Range: 0 - 90DEG
γ Interval: 1.0DEG
Test System:EVERFINE GO-2000B_V1 SYSTEM V2.0.288
Humidity:52%
Test Distance:5.850m [K=1.0000]
Remarks:

ISOLUX DIAGRAM

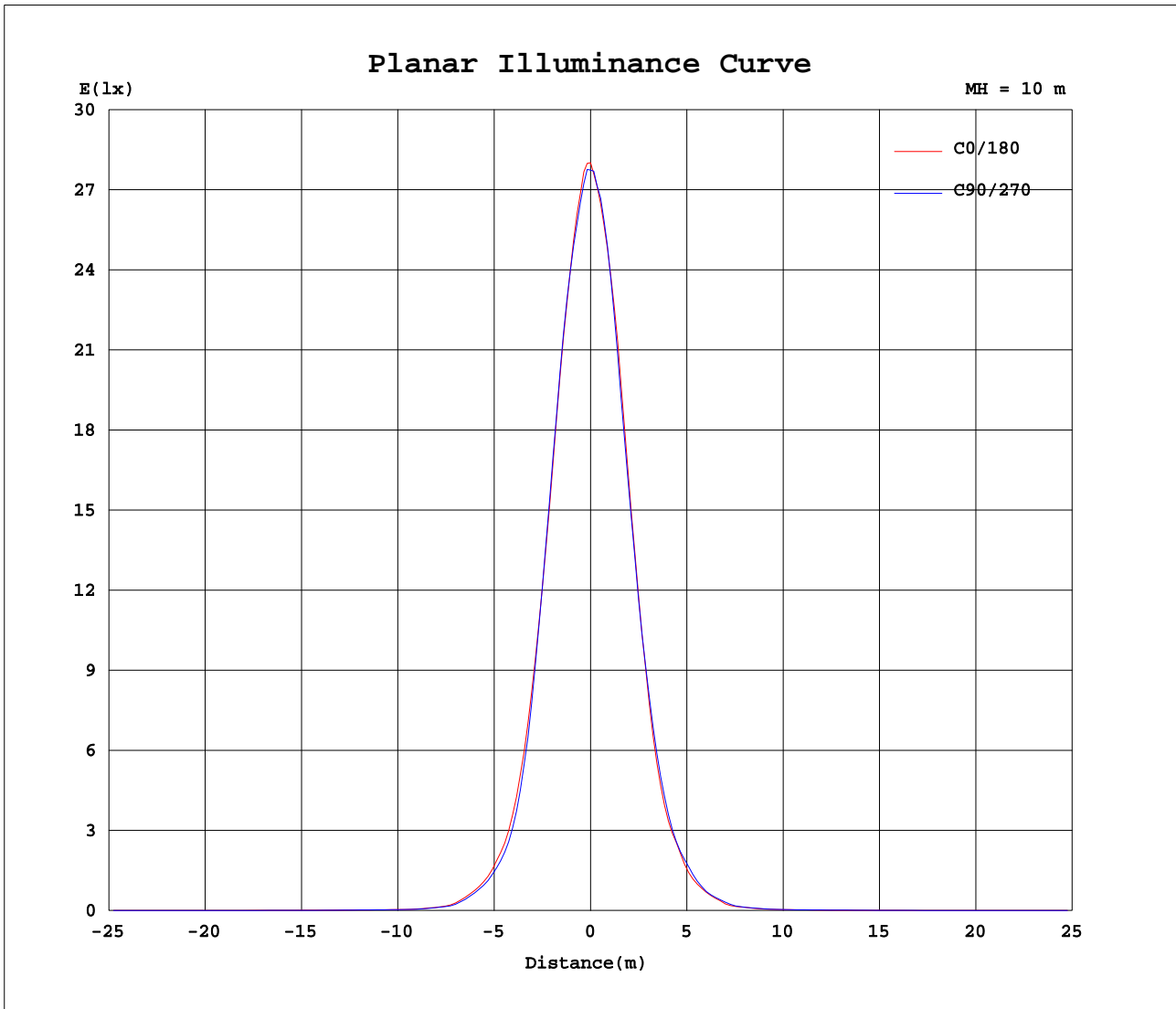
Test:U:220.7V I:0.0552A P:10.59W PF:0.8645 Lamp Flux:728.809x1 lm		
NAME: FF3-FS1-9W-830-24D-Specular	TYPE:Downlight	SERIAL No.:
SPEC.:3000K	DIM.: L153mm*W45mm*H60mm	
MFR.: NEKO LIGHTING AG		



C Range: 0 - 360DEG
C Interval: 15.0DEG
Test Speed: HIGH
Temperature:25.3DEG
Operators:Meng Yongjian
Test Date:2017-06-15

γ Range: 0 - 90DEG
γ Interval: 1.0DEG
Test System:EVERFINE GO-2000B_V1 SYSTEM V2.0.288
Humidity:52%
Test Distance:5.850m [K=1.0000]
Remarks:

Planar Illuminance Curve



C Range: 0 - 360DEG
 C Interval: 15.0DEG
 Test Speed: HIGH
 Temperature: 25.3DEG
 Operators: Meng Yongjian
 Test Date: 2017-06-15

γ Range: 0 - 90DEG
 γ Interval: 1.0DEG
 Test System: EVERFINE GO-2000B_V1 SYSTEM V2.0.288
 Humidity: 52%
 Test Distance: 5.850m [K=1.0000]
 Remarks:

Photometric Data Table [cd]

G/C	0.0	15.0	30.0	45.0	60.0	75.0	90.0	105.0	120.0	135.0
0.0	2801	2795	2798	2787	2786	2773	2774	2771	2766	2766
3.0	2696	2710	2720	2717	2698	2682	2663	2657	2640	2637
6.0	2436	2447	2465	2469	2454	2454	2434	2430	2421	2426
9.0	2078	2112	2099	2125	2111	2114	2093	2101	2066	2073
12.0	1622	1661	1658	1662	1668	1668	1644	1645	1619	1611
15.0	1195	1221	1219	1225	1201	1203	1185	1189	1160	1164
18.0	817.1	828.2	816.6	820.0	783.7	778.5	755.3	760.9	740.0	746.9
21.0	525.2	535.1	526.5	515.9	484.9	477.5	458.8	463.6	457.8	466.8
24.0	331.7	336.9	325.5	321.0	307.6	299.4	286.9	291.3	304.7	309.7
27.0	217.7	217.3	208.2	206.4	196.4	195.5	191.9	192.6	186.4	193.0
30.0	139.4	140.1	132.2	133.0	127.3	126.7	124.3	125.3	121.7	125.4
33.0	85.14	86.95	82.25	80.64	75.85	75.14	72.42	74.28	78.05	80.72
36.0	40.31	40.20	38.46	37.41	34.78	34.64	33.93	34.56	34.33	35.44
39.0	23.99	24.69	24.26	23.89	23.31	23.19	22.55	23.38	23.64	25.00
42.0	14.78	14.53	14.10	14.18	13.48	13.48	13.00	13.32	13.25	13.76
45.0	10.85	10.85	10.57	10.47	10.28	10.40	10.41	10.46	10.47	10.51
48.0	9.691	9.677	9.490	9.299	9.186	9.371	9.283	9.197	9.067	9.091
51.0	8.826	8.812	8.599	8.449	8.273	8.286	8.028	7.756	7.494	7.566
54.0	7.625	7.599	7.400	7.199	6.904	6.741	6.339	6.031	5.750	5.740
57.0	6.308	6.267	6.035	5.885	5.502	5.301	4.926	4.726	4.475	4.429
60.0	5.146	5.150	4.982	4.831	4.481	4.283	4.041	3.833	3.630	3.586
63.0	4.130	4.158	4.051	3.917	3.600	3.452	3.252	3.074	2.952	2.917
66.0	3.204	3.240	3.187	3.087	2.832	2.740	2.580	2.445	2.385	2.378
69.0	2.427	2.458	2.451	2.377	2.215	2.128	2.037	1.921	1.895	1.914
72.0	1.861	1.842	1.854	1.804	1.703	1.645	1.572	1.492	1.462	1.477
75.0	1.355	1.337	1.384	1.310	1.233	1.205	1.031	0.9896	0.9476	0.933
78.0	0.8670	0.8521	0.8734	0.8433	0.8252	0.7778	0.7639	0.7319	0.7376	0.7363
81.0	0.6326	0.6182	0.6523	0.6226	0.6129	0.5679	0.5582	0.5286	0.5429	0.5417
84.0	0.4250	0.4236	0.4534	0.4257	0.4140	0.3711	0.3659	0.3427	0.3637	0.3602
87.0	0.2586	0.2445	0.2653	0.2335	0.2303	0.1942	0.1953	0.1701	0.1909	0.1898
90.0	0.1093	0.1006	0.0962	0.0787	0.0678	0.0568	0.0503	0.0481	0.0525	0.0525
G/C	150.0	165.0	180.0	195.0	210.0	225.0	240.0	255.0	270.0	285.0
0.0	2754	2754	2801	2795	2798	2786	2773	2774	2771	2766
3.0	2623	2621	2658	2645	2651	2642	2657	2656	2679	2680
6.0	2399	2416	2418	2396	2410	2386	2390	2384	2409	2405
9.0	2038	2048	2046	2014	2010	1979	1996	1980	1995	2006
12.0	1569	1584	1590	1552	1554	1515	1535	1530	1568	1561
15.0	1126	1140	1147	1126	1126	1110	1136	1115	1146	1144
18.0	714.2	725.9	762.0	751.6	761.6	748.9	769.9	766.2	800.7	806.1
21.0	451.6	455.8	485.7	484.8	487.2	478.8	493.7	496.7	527.1	533.0
24.0	308.6	314.4	335.4	331.4	343.2	333.2	340.2	327.6	338.6	346.8
27.0	188.5	192.5	201.4	202.3	205.6	204.1	211.6	213.4	232.3	226.5
30.0	120.8	123.2	128.6	127.6	128.7	124.7	130.6	129.8	138.9	141.4
33.0	79.73	78.05	77.63	75.52	79.50	79.93	79.99	80.22	82.92	84.63
36.0	35.05	34.52	35.66	35.24	36.53	36.27	38.02	39.40	44.29	42.61
39.0	24.41	24.51	25.10	24.99	25.25	24.41	24.45	24.33	25.56	25.62
42.0	13.56	13.98	14.47	14.42	15.30	14.88	15.33	15.56	16.72	16.40
45.0	10.59	10.63	10.81	10.88	10.89	10.66	10.93	11.00	11.41	11.37
48.0	9.147	9.174	9.302	9.344	9.385	9.385	9.586	9.691	9.931	9.844
51.0	7.527	7.494	7.564	7.615	7.791	7.923	8.245	8.405	8.700	8.722
54.0	5.687	5.613	5.798	5.823	5.919	6.134	6.479	6.659	7.024	7.155
57.0	4.264	4.331	4.544	4.559	4.671	4.724	4.952	5.124	5.463	5.610
60.0	3.455	3.562	3.655	3.721	3.935	3.857	3.996	4.102	4.328	4.430
63.0	2.825	2.891	2.965	3.043	3.248	3.144	3.236	3.328	3.482	3.536
66.0	2.291	2.367	2.438	2.501	2.580	2.551	2.624	2.680	2.786	2.807
69.0	1.862	1.914	1.993	2.022	2.003	2.041	2.077	2.151	2.215	2.238
72.0	1.440	1.503	1.627	1.576	1.568	1.619	1.618	1.696	1.745	1.777
75.0	0.9559	0.9502	1.006	1.041	1.195	1.213	1.213	1.289	1.346	1.363
78.0	0.7462	0.7123	0.7187	0.7526	0.7537	0.7855	0.7887	0.8227	0.8410	0.8775
81.0	0.5582	0.5264	0.5261	0.5690	0.5700	0.5996	0.5983	0.6280	0.6311	0.6652
84.0	0.3812	0.3537	0.3315	0.3898	0.3885	0.4138	0.4060	0.4335	0.4299	0.4598
87.0	0.2106	0.1963	0.1657	0.2322	0.2137	0.2389	0.2290	0.2563	0.2443	0.2717
90.0	0.0700	0.0678	0.0525	0.0700	0.0700	0.0809	0.0809	0.0962	0.0940	0.1071
G/C	300.0	315.0	330.0	345.0						
0.0	2766	2766	2754	2754						
3.0	2703	2698	2725	2704						
6.0	2439	2442	2467	2466						
9.0	2043	2030	2059	2054						
12.0	1592	1572	1608	1588						
15.0	1167	1156	1187	1167						
18.0	830.9	812.7	834.6	816.1						
21.0	552.7	538.3	549.7	538.9						

C Range: 0 - 360DEG

C Interval: 15.0DEG

Test Speed: HIGH

Temperature: 25.3DEG

Operators: Meng Yongjian

Test Date: 2017-06-15

γ Range: 0 - 90DEG

γ Interval: 1.0DEG

Test System: EVERFINE GO-2000B_V1 SYSTEM V2.0.288

Humidity: 52%

Test Distance: 5.850m [K=1.0000]

Remarks:

Photometric Data Table [cd]

24.0	355.1	336.2	338.5	334.2
27.0	233.0	222.4	223.2	219.2
30.0	146.7	142.0	145.3	141.6
33.0	87.60	86.44	86.93	86.91
36.0	44.76	42.06	42.60	42.77
39.0	26.71	25.71	25.75	25.70
42.0	16.87	16.12	16.33	16.04
45.0	11.24	10.80	10.78	10.73
48.0	9.756	9.470	9.444	9.452
51.0	8.736	8.528	8.534	8.550
54.0	7.313	7.300	7.435	7.473
57.0	5.818	5.855	6.056	6.152
60.0	4.656	4.716	4.924	5.053
63.0	3.705	3.761	3.976	4.111
66.0	2.934	2.963	3.128	3.234
69.0	2.311	2.319	2.433	2.479
72.0	1.791	1.786	1.883	1.869
75.0	1.354	1.342	1.378	1.366
78.0	0.8847	0.9037	0.8956	0.9082
81.0	0.6682	0.6784	0.6726	0.6850
84.0	0.4540	0.4642	0.4561	0.4795
87.0	0.2596	0.2695	0.2596	0.2848
90.0	0.1050	0.1050	0.1006	0.1115

C Range: 0 - 360DEG
 C Interval: 15.0DEG
 Test Speed: HIGH
 Temperature: 25.3DEG
 Operators: Meng Yongjian
 Test Date: 2017-06-15

γ Range: 0 - 90DEG
 γ Interval: 1.0DEG
 Test System: EVERFINE GO-2000B_V1 SYSTEM V2.0.288
 Humidity: 52%
 Test Distance: 5.850m [K=1.0000]
 Remarks: