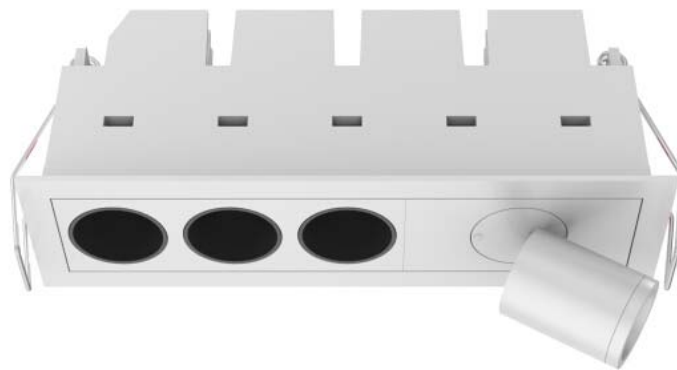


LED Downlight FUSION Series FF3-FS1-9W-830-24D Black



Light Output Ratio:	100.0%	
Luminaire Power:	10.58 W	
SHR Nominal:	0.00	Calculated using the TM5
SHR Maximum:	1.00	fine grid method.

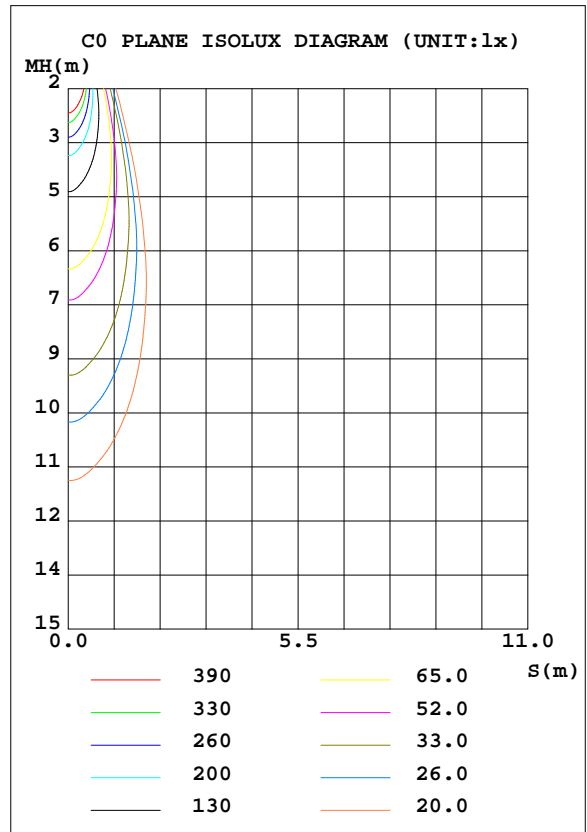
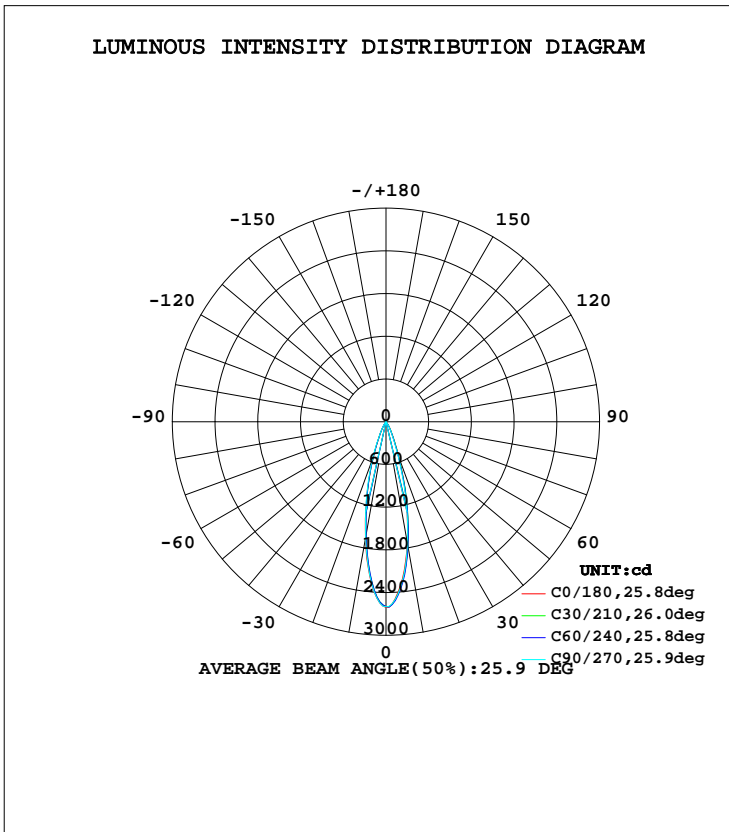
C Range: 0 - 360DEG
C Interval: 15.0DEG
Test Speed: HIGH
Temperature: 25.3DEG
Operators: Meng Yongjian
Test Date: 2017-06-15

γ Range: 0 - 90DEG
 γ Interval: 1.0DEG
Test System: EVERFINE GO-2000B_V1 SYSTEM V2.0.288
Humidity: 52%
Test Distance: 5.850m [K=1.0000]
Remarks:

LUMINAIRE PHOTOMETRIC TEST REPORT

Test:U:220.7V I:0.0551A P:10.58W PF:0.8674 Lamp Flux:641.938x1 lm		
NAME: FF3-FS1-9W-830-24D Black	TYPE:Downlight	SERIAL No.:
SPEC.:3000K	DIM.: L153mm*W45mm*H60mm	
MFR.: NEKO LIGHTING AG		

DATA OF LAMP		PHOTOMETRIC DATA			
MODEL	CREE-3000K	Imax(cd)	2608	S/MH(C0/180)	0.43
NOMINAL POWER(W)	11.0	LOR(%)	100.0	S/MH(C90/270)	0.43
RATED VOLTAGE(V)	220	TOTAL FLUX(lm)	641.94	η UP, DN(C0-180)	0.0, 49.8
NOMINAL FLUX(lm)	641.938	CIE CLASS	DIRECT	η UP, DN(C180-360)	0.0, 50.2
LAMPS INSIDE	1	η up(%)	0.0	CIBSE SHR NOM	0.00
TEST VOLTAGE(V)	220	η down(%)	100.0	CIBSE SHR MAX	1.00



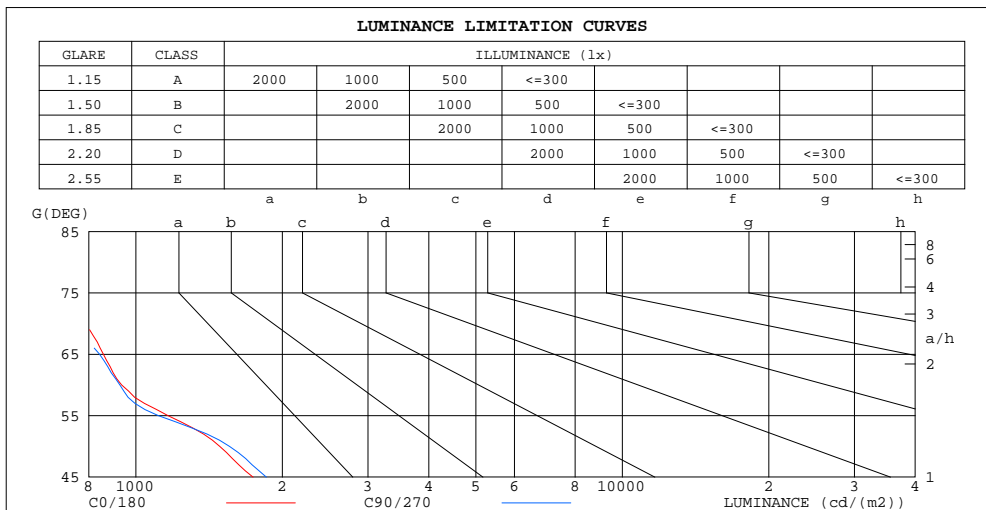
C Range: 0 - 360DEG
 C Interval: 15.0DEG
 Test Speed: HIGH
 Temperature: 25.3DEG
 Operators: Meng Yongjian
 Test Date: 2017-06-15

γ Range: 0 - 90DEG
 γ Interval: 1.0DEG
 Test System: EVERFINE GO-2000B_V1 SYSTEM V2.0.288
 Humidity: 52%
 Test Distance: 5.850m [K=1.0000]
 Remarks:

**ZONAL FLUX DIAGRAM
AND LUMINANCE LIMITATION CURVES**

ZONAL FLUX DIAGRAM:

γ	C0	C45	C90	C135	C180	C225	C270	C315	γ	Φ zone	Φ total	$\%lum, lamp$
10	1727	1796	1737	1678	1666	1588	1653	1712	0- 10	200.9	200.9	31.3,31.3
20	529.9	521.3	467.5	475.0	506.1	500.9	549.0	575.3	10- 20	284.7	485.6	75.6,75.6
30	116.4	111.1	102.8	101.7	101.2	97.70	106.3	116.3	20- 30	112.5	598.1	93.2,93.2
40	14.66	15.51	14.73	15.88	15.97	15.75	16.71	16.44	30- 40	28.57	626.6	97.6,97.6
50	6.540	6.648	6.849	6.878	6.790	6.666	6.685	6.266	40- 50	7.367	634.0	98.8,98.8
60	3.197	3.178	3.170	3.029	3.016	3.108	3.171	3.047	50- 60	4.075	638.1	99.4,99.4
70	1.840	1.809	1.735	1.663	1.702	1.676	1.756	1.739	60- 70	2.378	640.5	99.8,99.8
80	0.6435	0.6029	0.5779	0.5548	0.5219	0.5646	0.5897	0.6258	70- 80	1.149	641.6	99.9,99.9
90	0.1006	0.0765	0.0503	0.0481	0.0415	0.0612	0.0722	0.0918	80- 90	0.3365	641.9	100,100
100									90-100			
110									100-110			
120									110-120			
130									120-130			
140									130-140			
150									140-150			
160									150-160			
170									160-170			
180									170-180			
DEG	LUMINOUS INTENSITY:cd									UNIT:lm		



LUMINANCE cd/(m2)		
G(DEG)	C0/180	C90/270
85	584	485
80	542	487
75	668	598
70	787	742
65	857	842
60	935	927
55	1164	1113
50	1487	1558
45	1741	1854

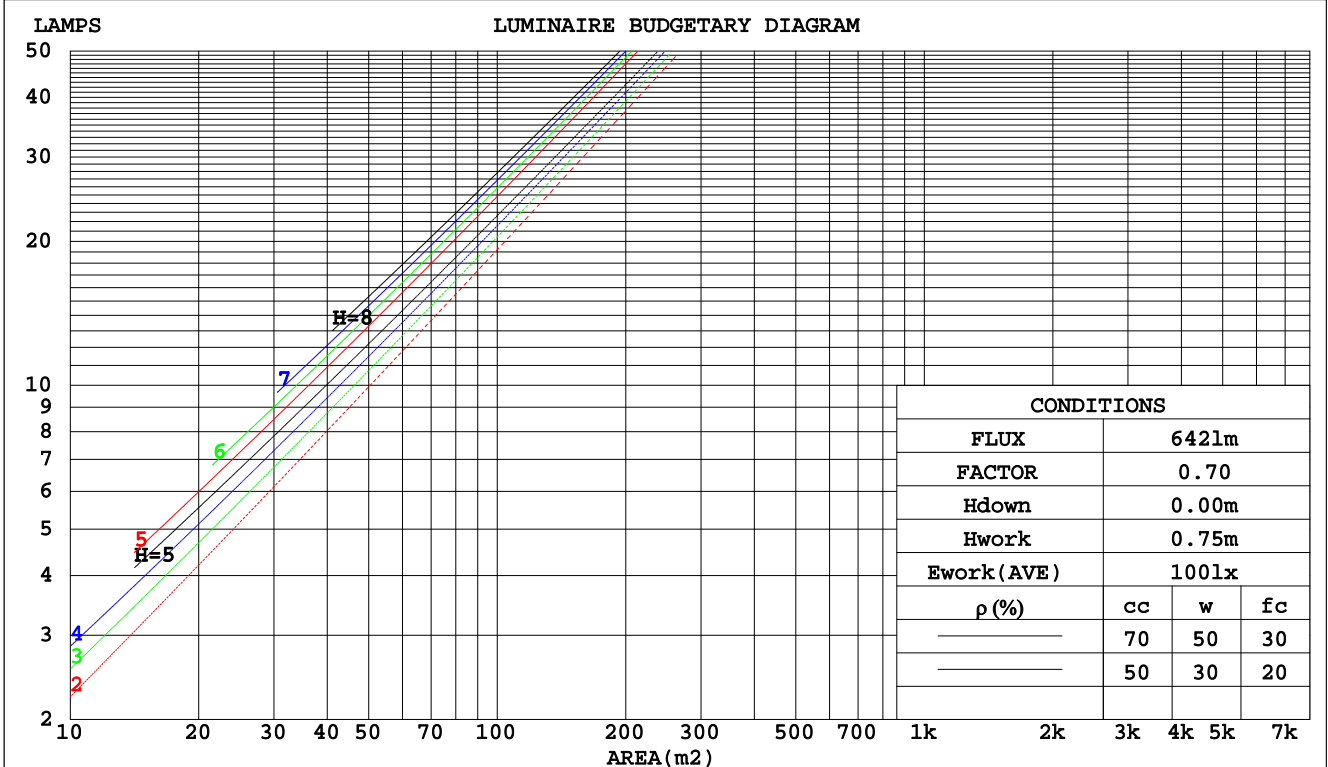
C Range: 0 - 360DEG
C Interval: 15.0DEG
Test Speed: HIGH
Temperature:25.3DEG
Operators:Meng Yongjian
Test Date:2017-06-15

γ Range: 0 - 90DEG
 γ Interval: 1.0DEG
Test System:EVERFINE GO-2000B_V1 SYSTEM V2.0.288
Humidity:52%
Test Distance:5.850m [K=1.0000]
Remarks:

CU AND LUMINAIRE BUDGETARY ESTIMATE DIAGRAM

Test:U:220.7V I:0.0551A P:10.58W PF:0.8674 Lamp Flux:641.938x1 lm		
NAME: FF3-FS1-9W-830-24D Black	TYPE:Downlight	SERIAL No.:
SPEC.:3000K	DIM.: L153mm*W45mm*H60mm	
MFR.: NEKO LIGHTING AG		

pcc	80%			70%			50%			30%			10%			0
	50%	30%	10%	50%	30%	10%	50%	30%	10%	50%	30%	10%	50%	30%	10%	0
pw																
pfc																
RCR	RCR:Room Cavity Ratio															
	Coefficients of Utilization(CU)															
0.0	1.19	1.19	1.19	1.16	1.16	1.16	1.11	1.11	1.11	1.06	1.06	1.06	1.02	1.02	1.02	.00
1.0	1.13	1.11	1.09	1.10	1.09	1.07	1.06	1.05	1.04	1.03	1.02	1.01	.99	.99	.98	.96
2.0	1.07	1.04	1.01	1.05	1.02	1.00	1.02	.99	.98	.99	.97	.96	.97	.95	.94	.92
3.0	1.02	.98	.95	1.01	.97	.95	.98	.95	.93	.96	.94	.92	.94	.92	.90	.89
4.0	.98	.94	.90	.97	.93	.90	.95	.91	.89	.93	.90	.88	.91	.89	.87	.86
5.0	.94	.90	.86	.93	.89	.86	.91	.88	.85	.90	.87	.85	.88	.86	.84	.83
6.0	.90	.86	.83	.90	.86	.83	.88	.85	.82	.87	.84	.82	.86	.83	.81	.80
7.0	.87	.83	.80	.87	.83	.80	.86	.82	.79	.85	.81	.79	.84	.81	.78	.77
8.0	.84	.80	.77	.84	.80	.77	.83	.79	.77	.82	.79	.76	.81	.78	.76	.75
9.0	.82	.77	.74	.81	.77	.74	.80	.77	.74	.80	.76	.74	.79	.76	.74	.73
10.0	.79	.75	.72	.79	.75	.72	.78	.74	.72	.77	.74	.72	.77	.74	.72	.71



C Range: 0 - 360DEG
 C Interval: 15.0DEG
 Test Speed: HIGH
 Temperature: 25.3DEG
 Operators: Meng Yongjian
 Test Date: 2017-06-15

γ Range: 0 - 90DEG
 γ Interval: 1.0DEG
 Test System: EVERFINE GO-2000B_V1 SYSTEM V2.0.288
 Humidity: 52%
 Test Distance: 5.850m [K=1.0000]
 Remarks:

WEC AND CCEC

Test:U:220.7V I:0.0551A P:10.58W PF:0.8674 Lamp Flux:641.938x1 lm		
NAME: FF3-FS1-9W-830-24D Black	TYPE:Downlight	SERIAL No.:
SPEC.:3000K	DIM.: L153mm*W45mm*H60mm	
MFR.: NEKO LIGHTING AG		

ρcc	80%			70%			50%			30%			10%			0
ρw	50%	30%	10%	50%	30%	10%	50%	30%	10%	50%	30%	10%	50%	30%	10%	0
ρfc	20%			20%			20%			20%			20%			0
RCR	RCR:Room Cavity Ratio						Wall Exitance Coefficients(WEC)									
0.0																
1.0	.143	.081	.026	.137	.078	.025	.124	.071	.023	.113	.065	.021	.102	.059	.019	
2.0	.133	.073	.022	.128	.070	.022	.117	.065	.020	.108	.061	.019	.099	.056	.018	
3.0	.124	.066	.020	.120	.064	.019	.111	.060	.018	.103	.057	.017	.096	.053	.016	
4.0	.117	.061	.018	.113	.059	.017	.106	.056	.017	.099	.053	.016	.093	.050	.015	
5.0	.110	.056	.016	.107	.055	.016	.101	.052	.015	.095	.050	.015	.089	.048	.014	
6.0	.104	.052	.015	.101	.051	.015	.096	.049	.014	.091	.047	.014	.086	.045	.014	
7.0	.099	.049	.014	.097	.048	.014	.092	.046	.013	.088	.045	.013	.083	.043	.013	
8.0	.094	.046	.013	.092	.045	.013	.088	.044	.013	.084	.043	.012	.081	.041	.012	
9.0	.090	.044	.012	.088	.043	.012	.085	.042	.012	.081	.041	.012	.078	.040	.011	
10.0	.087	.042	.012	.085	.041	.011	.082	.040	.011	.079	.039	.011	.076	.038	.011	

ρcc	80%			70%			50%			30%			10%			0
ρw	50%	30%	10%	50%	30%	10%	50%	30%	10%	50%	30%	10%	50%	30%	10%	0
ρfc	20%			20%			20%			20%			20%			0
RCR	RCR:Room Cavity Ratio						Ceiling Cavity Exitance Coefficients(CCEC)									
0.0	.190	.190	.190	.163	.163	.163	.111	.111	.111	.064	.064	.064	.020	.020	.020	
1.0	.169	.158	.148	.144	.135	.127	.099	.093	.088	.057	.054	.051	.018	.017	.017	
2.0	.151	.133	.117	.129	.114	.101	.089	.079	.071	.051	.046	.041	.016	.015	.013	
3.0	.136	.113	.095	.117	.098	.082	.080	.068	.058	.046	.040	.034	.015	.013	.011	
4.0	.124	.098	.078	.107	.085	.068	.073	.059	.048	.042	.035	.028	.014	.011	.009	
5.0	.114	.086	.065	.098	.074	.057	.067	.052	.040	.039	.030	.024	.013	.010	.008	
6.0	.105	.076	.055	.090	.066	.048	.062	.046	.034	.036	.027	.020	.012	.009	.007	
7.0	.098	.068	.047	.084	.059	.041	.058	.041	.029	.034	.024	.017	.011	.008	.006	
8.0	.091	.061	.040	.079	.053	.035	.054	.037	.025	.032	.022	.015	.010	.007	.005	
9.0	.086	.056	.035	.074	.048	.031	.051	.034	.022	.030	.020	.013	.010	.007	.004	
10.0	.081	.051	.031	.070	.044	.027	.048	.031	.019	.028	.018	.011	.009	.006	.004	

C Range: 0 - 360DEG
 C Interval: 15.0DEG
 Test Speed: HIGH
 Temperature:25.3DEG
 Operators:Meng Yongjian
 Test Date:2017-06-15

γ Range: 0 - 90DEG
 γ Interval: 1.0DEG
 Test System:EVERFINE GO-2000B_V1 SYSTEM V2.0.288
 Humidity:52%
 Test Distance:5.850m [K=1.0000]
 Remarks:

UGR(Unified Glare Rating) Table

Test:U:220.7V I:0.0551A P:10.58W PF:0.8674 Lamp Flux:641.938x1 lm		
NAME: FF3-FS1-9W-830-24D Black	TYPE:Downlight	SERIAL No.:
SPEC.:3000K	DIM.: L153mm*W45mm*H60mm	
MFR.: NEKO LIGHTING AG		

ceiling/cavity	0.7	0.7	0.5	0.5	0.3	0.7	0.7	0.5	0.5	0.3
walls	0.5	0.3	0.5	0.3	0.3	0.5	0.3	0.5	0.3	0.3
working plane	0.2	0.2	0.2	0.2	0.2	0.2	0.2	0.2	0.2	0.2
Room dimensions	Viewed crosswise					Viewed endwise				
x = 2H y = 2H	7.0	7.7	7.2	7.9	8.0	6.4	7.1	6.6	7.3	7.4
3H	7.2	7.8	7.4	8.0	8.2	6.6	7.3	6.9	7.5	7.6
4H	7.3	7.9	7.5	8.1	8.3	6.7	7.3	7.0	7.5	7.7
6H	7.3	7.9	7.6	8.1	8.3	6.7	7.3	7.0	7.5	7.8
8H	7.3	7.8	7.6	8.1	8.3	6.7	7.3	7.0	7.5	7.8
12H	7.3	7.8	7.6	8.1	8.3	6.7	7.2	7.0	7.5	7.8
4H 2H	7.0	7.6	7.2	7.8	8.0	6.4	7.0	6.7	7.2	7.4
3H	7.3	7.8	7.6	8.0	8.3	6.7	7.3	7.0	7.5	7.8
4H	7.4	7.9	7.7	8.2	8.5	6.8	7.3	7.2	7.6	7.9
6H	7.4	7.9	7.8	8.2	8.5	6.9	7.3	7.3	7.6	8.0
8H	7.4	7.8	7.8	8.2	8.6	6.9	7.3	7.3	7.7	8.0
12H	7.5	7.8	7.9	8.2	8.6	6.9	7.3	7.3	7.6	8.0
8H 4H	7.3	7.7	7.7	8.1	8.4	6.8	7.2	7.2	7.6	7.9
6H	7.4	7.8	7.8	8.1	8.6	6.9	7.2	7.3	7.6	8.0
8H	7.5	7.8	7.9	8.2	8.6	6.9	7.2	7.4	7.7	8.1
12H	7.5	7.8	8.0	8.2	8.7	7.0	7.2	7.4	7.7	8.1
12H 4H	7.3	7.7	7.7	8.0	8.4	6.8	7.1	7.2	7.5	7.9
6H	7.4	7.7	7.8	8.1	8.5	6.9	7.2	7.3	7.6	8.0
8H	7.4	7.7	7.9	8.1	8.6	6.9	7.2	7.4	7.6	8.1
Variations with the observer position at spacings:										
S = 1.0H	+ 1.5 / - 1.4					+ 1.3 / - 1.3				
1.5H	+ 2.6 / - 1.0					+ 2.1 / - 1.0				
2.0H	+ 1.2 / - 0.9					+ 1.4 / - 1.1				

CIE Pub.117 Corrected 641.9 lm Total Lamp Luminous Flux. (8log(F/F0) = -1.5)

C Range: 0 - 360DEG
C Interval: 15.0DEG
Test Speed: HIGH
Temperature:25.3DEG
Operators:Meng Yongjian
Test Date:2017-06-15

γ Range: 0 - 90DEG
γ Interval: 1.0DEG
Test System:EVERFINE GO-2000B_V1 SYSTEM V2.0.288
Humidity:52%
Test Distance:5.850m [K=1.0000]
Remarks:

UTILIZATION FACTORS TABLE

Test:U:220.7V I:0.0551A P:10.58W PF:0.8674 Lamp Flux:641.938x1 lm		
NAME: FF3-FS1-9W-830-24D Black	TYPE:Downlight	SERIAL No.:
SPEC.:3000K	DIM.: L153mm*W45mm*H60mm	
MFR.: NEKO LIGHTING AG		

REFLECTANCE										
Ceiling	0.8	0.8	0.8	0.7	0.7	0.7	0.5	0.5	0.5	0
Walls	0.7	0.5	0.3	0.7	0.5	0.3	0.7	0.5	0.3	0
Working plane	0.2	0.2	0.2	0.2	0.2	0.2	0.2	0.2	0.2	0
ROOM INDEX	UTILIZATION FACTORS(PERCENT) $k(RI) \times RCR = 5$									
k = 0.60	90	84	81	90	84	81	89	84	81	77
0.80	97	92	88	96	91	88	95	91	88	84
1.00	101	96	93	100	95	92	99	95	92	88
1.25	105	100	97	104	99	96	102	98	95	92
1.50	107	103	100	106	102	99	104	101	98	94
2.00	109	106	103	108	105	102	105	103	100	95
2.50	111	107	105	109	106	104	106	104	102	96
3.00	112	109	107	111	108	106	107	105	103	97
4.00	114	112	110	112	110	108	109	107	106	99
5.00	116	113	112	113	112	110	109	108	107	100
ROOM INDEX	UF(total)									Direct
According to DIN EN 13032-2 2004			Suspended				SHRNOM = 1.25			

C Range: 0 - 360DEG
 C Interval: 15.0DEG
 Test Speed: HIGH
 Temperature:25.3DEG
 Operators:Meng Yongjian
 Test Date:2017-06-15

γ Range: 0 - 90DEG
 γ Interval: 1.0DEG
 Test System:EVERFINE GO-2000B_V1 SYSTEM V2.0.288
 Humidity:52%
 Test Distance:5.850m [K=1.0000]
 Remarks:

ISOCANDELA DIAGRAM

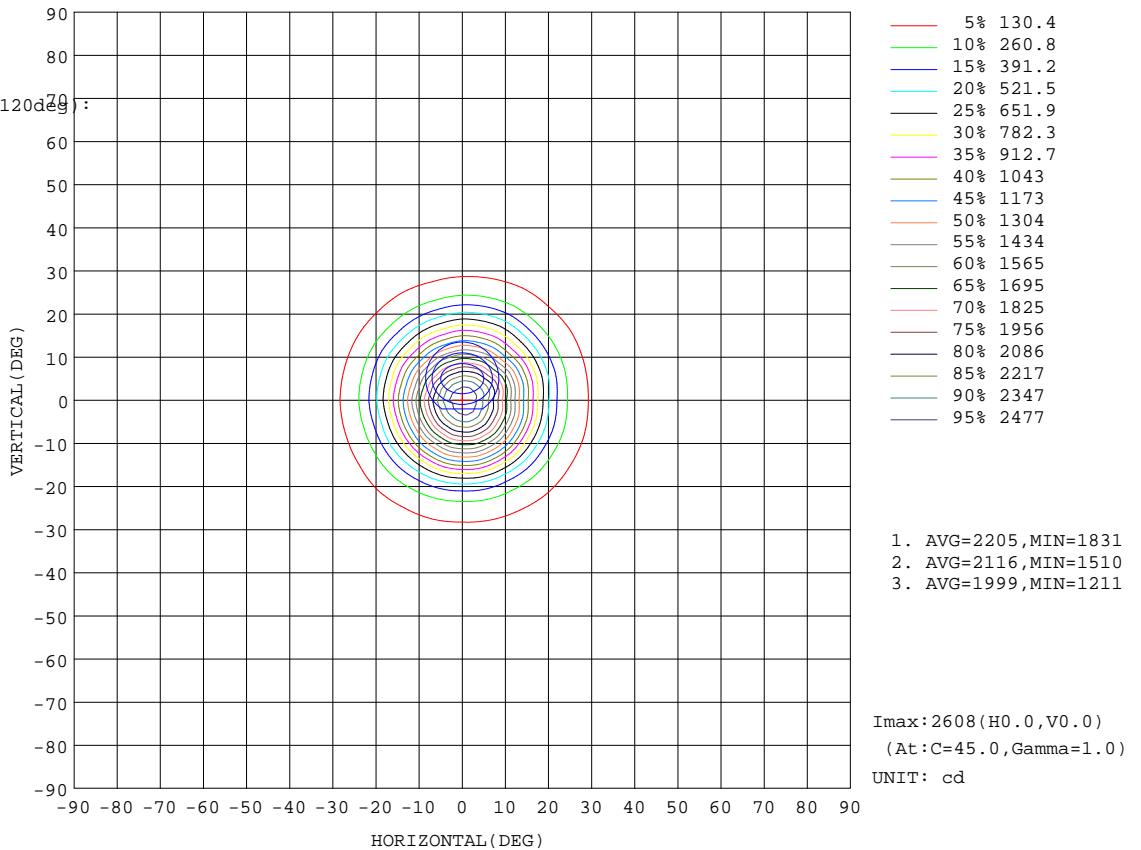
Test:U:220.7V I:0.0551A P:10.58W PF:0.8674 Lamp Flux:641.938x1 lm		
NAME: FF3-FS1-9W-830-24D Black	TYPE:Downlight	SERIAL No.:
SPEC.:3000K	DIM.: L153mm*W45mm*H60mm	
MFR.: NEKO LIGHTING AG		

Conical surface Flux(90deg):

630.89 lm
%lum = 98.3%
%lamp = 98.3%

Conical surface Flux(120deg):

638.07 lm
%lum = 99.4%
%lamp = 99.4%



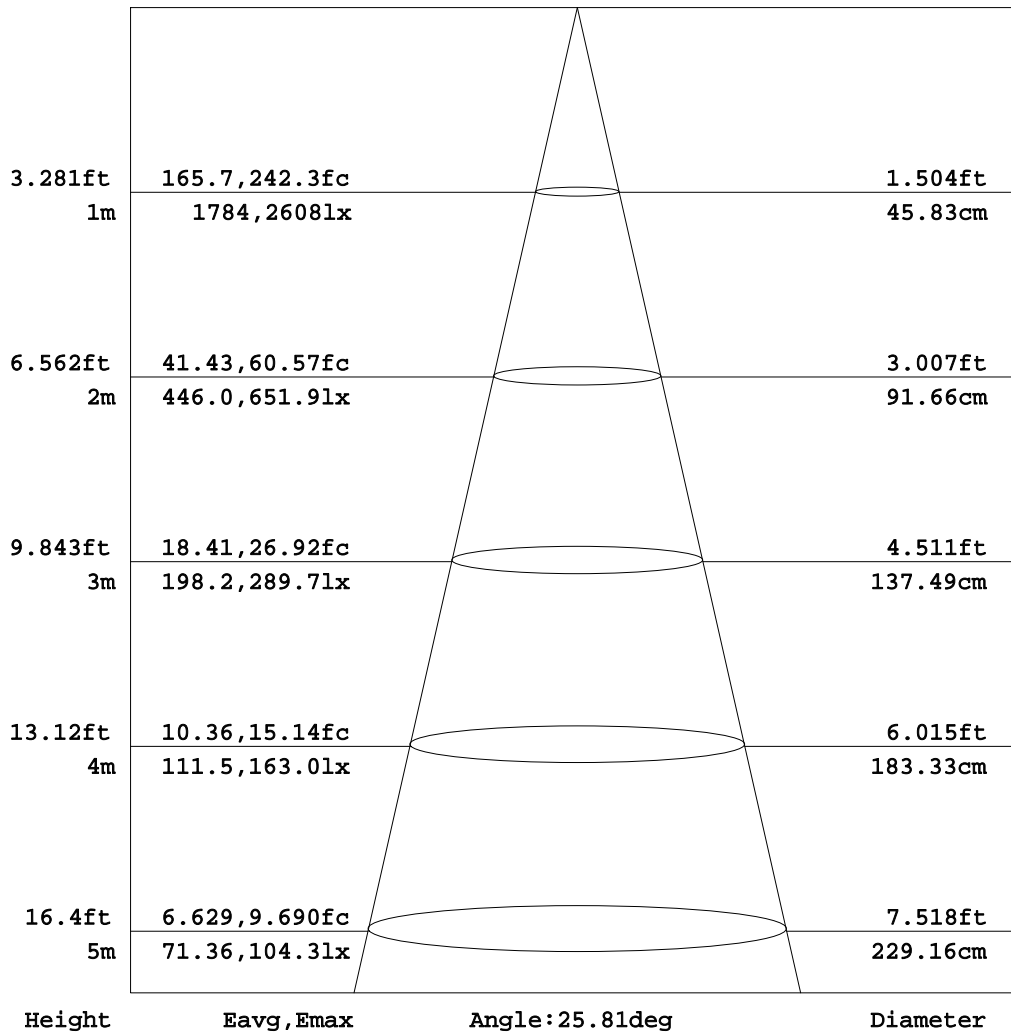
C Range: 0 - 360DEG
C Interval: 15.0DEG
Test Speed: HIGH
Temperature: 25.3DEG
Operators: Meng Yongjian
Test Date: 2017-06-15

γ Range: 0 - 90DEG
γ Interval: 1.0DEG
Test System: EVERFINE GO-2000B_V1 SYSTEM V2.0.288
Humidity: 52%
Test Distance: 5.850m [K=1.0000]
Remarks:

AAI Figure

Test:U:220.7V I:0.0551A P:10.58W PF:0.8674 Lamp Flux:641.938x1 lm		
NAME: FF3-FS1-9W-830-24D Black	TYPE:Downlight	SERIAL No.:
SPEC.:3000K	DIM.: L153mm*W45mm*H60mm	
MFR.: NEKO LIGHTING AG		

Flux out:298.7 lm



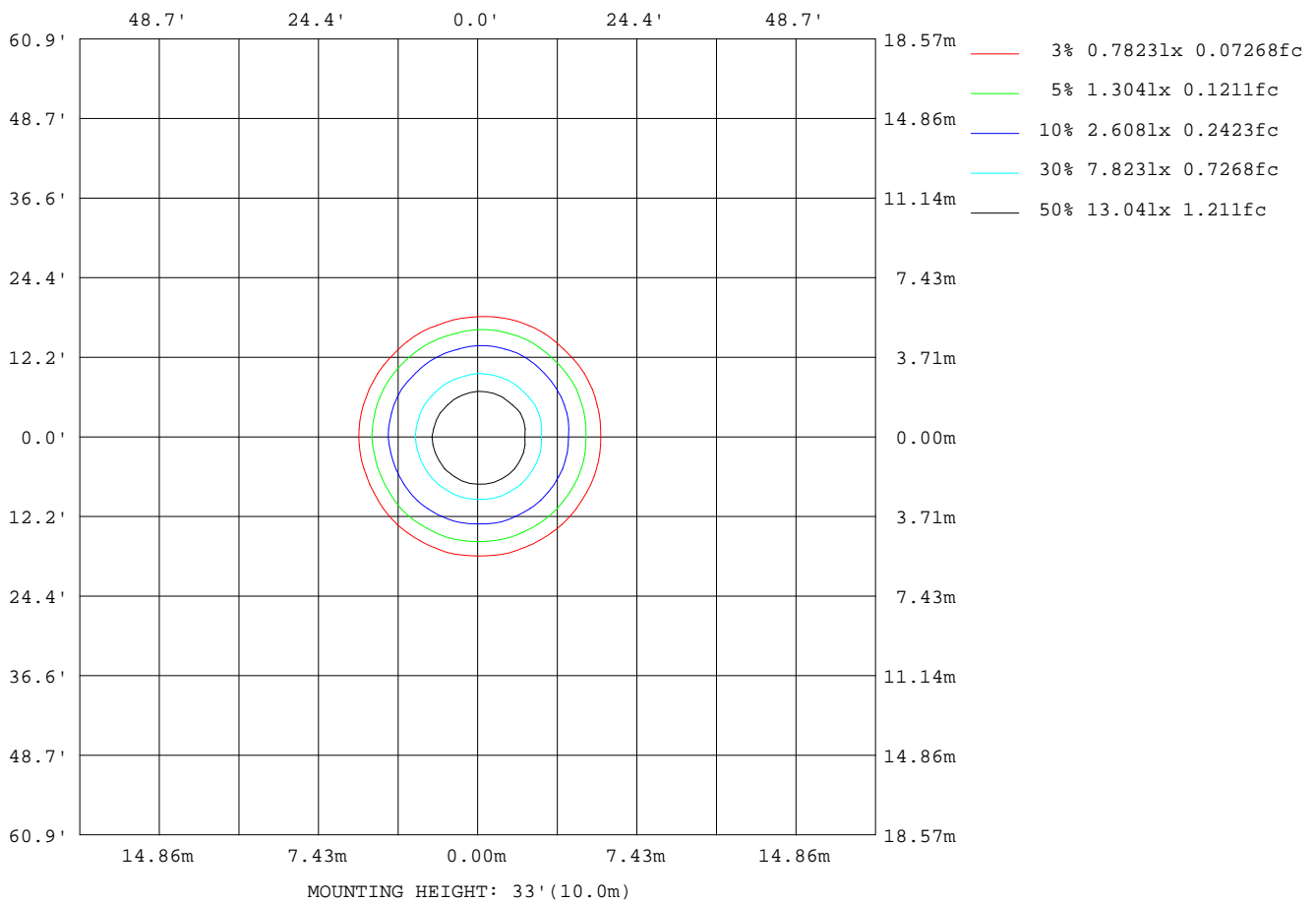
Note:The Curves indicate the illuminated area and the average illumination when the luminaire is at different distance.

C Range: 0 - 360DEG
C Interval: 15.0DEG
Test Speed: HIGH
Temperature:25.3DEG
Operators:Meng Yongjian
Test Date:2017-06-15

γ Range: 0 - 90DEG
γ Interval: 1.0DEG
Test System:EVERFINE GO-2000B_V1 SYSTEM V2.0.288
Humidity:52%
Test Distance:5.850m [K=1.0000]
Remarks:

ISOLUX DIAGRAM

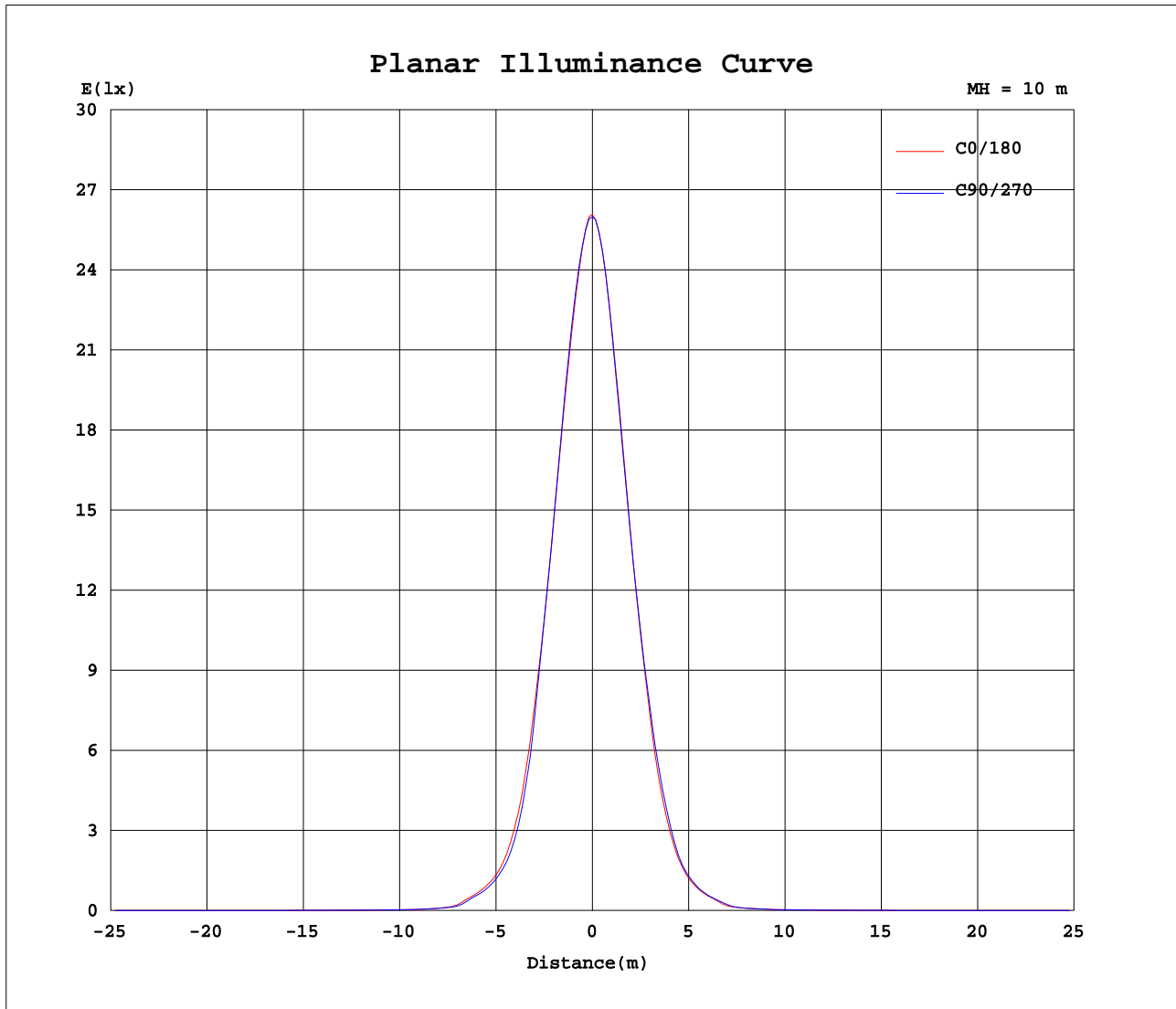
Test:U:220.7V I:0.0551A P:10.58W PF:0.8674 Lamp Flux:641.938x1 lm		
NAME: FF3-FS1-9W-830-24D Black	TYPE:Downlight	SERIAL No.:
SPEC.:3000K	DIM.: L153mm*W45mm*H60mm	
MFR.: NEKO LIGHTING AG		



C Range: 0 - 360DEG
 C Interval: 15.0DEG
 Test Speed: HIGH
 Temperature:25.3DEG
 Operators:Meng Yongjian
 Test Date:2017-06-15

γ Range: 0 - 90DEG
 γ Interval: 1.0DEG
 Test System:EVERFINE GO-2000B_V1 SYSTEM V2.0.288
 Humidity:52%
 Test Distance:5.850m [K=1.0000]
 Remarks:

Planar Illuminance Curve



C Range: 0 - 360DEG
 C Interval: 15.0DEG
 Test Speed: HIGH
 Temperature: 25.3DEG
 Operators: Meng Yongjian
 Test Date: 2017-06-15

γ Range: 0 - 90DEG
 γ Interval: 1.0DEG
 Test System: EVERFINE GO-2000B_V1 SYSTEM V2.0.288
 Humidity: 52%
 Test Distance: 5.850m [K=1.0000]
 Remarks:

LUMINOUS DISTRIBUTION INTENSITY DATA

Test:U:220.7V I:0.0551A P:10.58W PF:0.8674 Lamp Flux:641.938x1 lm		
NAME: FF3-FS1-9W-830-24D Black	TYPE:Downlight	SERIAL No.:
SPEC.:3000K	DIM.: L153mm*W45mm*H60mm	
MFR.: NEKO LIGHTING AG		

Table--1 UNIT: cd

C(DEC) \ γ (DEC)	0	15	30	45	60	75	90	105	120	135	150	165	180	195	210	225	240	255	270
0	2608	2598	2597	2595	2594	2599	2599	2600	2597	2599	2577	2578	2608	2598	2597	2595	2594	2599	2599
5	2318	2342	2344	2374	2364	2365	2339	2330	2301	2295	2281	2273	2297	2263	2269	2250	2267	2264	2293
10	1727	1779	1776	1796	1778	1772	1737	1730	1685	1678	1653	1652	1666	1620	1625	1588	1616	1610	1653
15	1076	1116	1110	1121	1098	1092	1060	1054	1024	1023	1003	1004	1025	998	1004	984	1002	999	1039
20	530	537	526	521	493	485	467	469	468	475	480	477	506	505	516	501	514	521	549
25	235	239	231	226	215	212	207	209	208	212	207	208	220	219	220	212	218	217	231
30	116	117	113	111	107	106	103	103	101	102	96.7	97.6	101	98.6	97.8	97.7	99.9	100	106
35	39.7	41.4	37.5	36.6	33.4	33.5	31.4	32.0	31.1	31.0	28.6	28.3	32.5	32.3	33.7	34.0	37.3	36.7	40.9
40	14.7	15.5	15.4	15.5	15.2	15.1	14.7	15.1	15.3	15.9	15.3	14.9	16.0	16.2	16.4	15.7	15.9	15.8	16.7
45	8.42	8.59	8.52	8.57	8.59	8.84	8.97	9.11	9.29	9.28	9.29	9.35	9.33	9.37	9.09	8.72	8.72	8.58	8.73
50	6.54	6.68	6.69	6.65	6.68	6.89	6.85	6.87	6.87	6.88	6.81	6.86	6.79	6.81	6.77	6.67	6.70	6.62	6.69
55	4.57	4.70	4.62	4.59	4.52	4.53	4.37	4.32	4.24	4.24	4.06	4.16	4.24	4.20	4.24	4.24	4.32	4.30	4.44
60	3.20	3.23	3.20	3.18	3.13	3.15	3.17	3.11	3.06	3.03	2.91	3.02	3.02	3.09	3.23	3.11	3.12	3.13	3.17
65	2.48	2.49	2.50	2.48	2.41	2.44	2.43	2.34	2.34	2.31	2.22	2.28	2.30	2.37	2.43	2.38	2.38	2.42	2.44
70	1.84	1.85	1.85	1.81	1.78	1.76	1.74	1.65	1.65	1.66	1.60	1.65	1.70	1.70	1.65	1.68	1.68	1.74	1.76
75	1.18	1.17	1.22	1.16	1.12	1.12	1.06	1.00	0.91	1.01	0.87	0.88	0.93	0.92	1.04	1.06	1.04	1.12	1.15
80	0.64	0.62	0.63	0.60	0.61	0.58	0.58	0.55	0.56	0.55	0.56	0.53	0.52	0.55	0.54	0.56	0.56	0.59	0.59
85	0.35	0.33	0.34	0.31	0.32	0.28	0.29	0.26	0.28	0.27	0.28	0.26	0.25	0.28	0.27	0.29	0.28	0.31	0.30
90	0.10	0.09	0.09	0.08	0.07	0.06	0.05	0.05	0.05	0.05	0.06	0.05	0.04	0.05	0.05	0.06	0.06	0.08	0.07

C Range: 0 - 360DEG
C Interval: 15.0DEG
Test Speed: HIGH
Temperature:25.3DEG
Operators:Meng Yongjian
Test Date:2017-06-15

γ Range: 0 - 90DEG
γ Interval: 1.0DEG
Test System:EVERFINE GO-2000B_V1 SYSTEM V2.0.288
Humidity:52%
Test Distance:5.850m [K=1.0000]
Remarks:

LUMINOUS DISTRIBUTION INTENSITY DATA

Test:U:220.7V I:0.0551A P:10.58W PF:0.8674 Lamp Flux:641.938x1 lm		
NAME: FF3-FS1-9W-830-24D Black	TYPE:Downlight	SERIAL No.:
SPEC.:3000K	DIM.: L153mm*W45mm*H60mm	
MFR.: NEKO LIGHTING AG		

Table--2 UNIT: cd

C(DEG)	285	300	315	330	345										
γ (DEG)	0	2600	2597	2599	2577	2578									
5	2306	2332	2338	2361	2371										
10	1666	1709	1712	1798	1801										
15	1047	1072	1072	1124	1126										
20	564	584	575	580	584										
25	239	249	244	250	247										
30	112	116	116	121	120										
35	43.2	47.5	46.2	47.9	44.2										
40	16.7	17.4	16.4	15.9	15.1										
45	8.65	8.47	8.21	8.25	8.28										
50	6.57	6.45	6.27	6.34	6.36										
55	4.41	4.46	4.36	4.47	4.52										
60	3.15	3.13	3.05	3.07	3.12										
65	2.42	2.41	2.35	2.38	2.44										
70	1.77	1.77	1.74	1.79	1.81										
75	1.17	1.14	1.12	1.16	1.16										
80	0.62	0.62	0.63	0.62	0.65										
85	0.33	0.32	0.34	0.33	0.35										
90	0.09	0.09	0.09	0.09	0.10										

C Range: 0 - 360DEG
 C Interval: 15.0DEG
 Test Speed: HIGH
 Temperature: 25.3DEG
 Operators: Meng Yongjian
 Test Date: 2017-06-15

γ Range: 0 - 90DEG
 γ Interval: 1.0DEG
 Test System: EVERFINE GO-2000B_V1 SYSTEM V2.0.288
 Humidity: 52%
 Test Distance: 5.850m [K=1.0000]
 Remarks:

Photometric Data Table [cd]

G/C	0.0	15.0	30.0	45.0	60.0	75.0	90.0	105.0	120.0	135.0
0.0	2608	2598	2597	2595	2594	2599	2599	2600	2597	2599
3.0	2489	2505	2502	2523	2516	2516	2496	2486	2468	2465
6.0	2214	2246	2249	2277	2269	2267	2239	2227	2197	2192
9.0	1859	1908	1903	1929	1913	1910	1875	1868	1824	1817
12.0	1457	1511	1508	1526	1503	1497	1461	1455	1412	1408
15.0	1076	1116	1110	1121	1098	1092	1060	1054	1024	1023
18.0	723.7	738.3	718.6	722.6	692.8	686.7	656.8	658.1	645.7	648.2
21.0	453.1	460.6	447.4	441.6	414.9	408.7	393.7	396.8	396.6	405.0
24.0	277.0	280.0	268.5	262.7	250.4	247.5	239.3	241.8	242.6	246.6
27.0	175.8	179.6	172.2	169.9	161.9	160.2	155.6	157.2	153.6	156.6
30.0	116.4	117.3	113.2	111.1	107.2	105.6	102.8	102.8	101.0	101.7
33.0	74.70	74.54	71.10	68.98	63.56	64.80	60.47	59.96	57.70	57.09
36.0	29.86	30.81	28.61	28.09	26.33	26.20	25.57	26.09	26.10	26.19
39.0	17.64	18.29	17.87	17.88	17.38	17.32	16.72	17.11	17.37	18.12
42.0	11.29	11.21	11.35	11.36	11.04	11.30	10.98	11.23	11.28	11.56
45.0	8.422	8.591	8.517	8.574	8.588	8.836	8.966	9.107	9.285	9.284
48.0	7.230	7.389	7.367	7.348	7.374	7.671	7.698	7.767	7.819	7.838
51.0	6.185	6.335	6.295	6.284	6.306	6.459	6.394	6.320	6.272	6.344
54.0	4.970	5.115	5.054	5.019	4.958	4.992	4.849	4.748	4.676	4.691
57.0	3.878	3.935	3.856	3.852	3.764	3.808	3.709	3.676	3.628	3.623
60.0	3.197	3.228	3.203	3.178	3.133	3.149	3.170	3.112	3.063	3.029
63.0	2.748	2.769	2.774	2.740	2.693	2.716	2.717	2.642	2.610	2.583
66.0	2.350	2.360	2.372	2.341	2.278	2.308	2.284	2.203	2.199	2.181
69.0	1.969	1.980	1.982	1.945	1.899	1.894	1.877	1.785	1.792	1.794
72.0	1.582	1.582	1.596	1.556	1.519	1.503	1.473	1.405	1.392	1.389
75.0	1.182	1.173	1.219	1.155	1.119	1.122	1.058	0.9999	0.9145	1.011
78.0	0.7683	0.7473	0.7573	0.7341	0.7354	0.7057	0.7048	0.6751	0.6851	0.6730
81.0	0.5801	0.5592	0.5691	0.5417	0.5451	0.5133	0.5145	0.4871	0.5057	0.4937
84.0	0.4009	0.3799	0.3942	0.3646	0.3702	0.3384	0.3440	0.3165	0.3352	0.3231
87.0	0.2433	0.2205	0.2324	0.2030	0.2170	0.1811	0.1886	0.1636	0.1842	0.1680
90.0	0.1006	0.0918	0.0875	0.0765	0.0678	0.0568	0.0503	0.0459	0.0503	0.0481
G/C	150.0	165.0	180.0	195.0	210.0	225.0	240.0	255.0	270.0	285.0
0.0	2577	2578	2608	2598	2597	2595	2594	2599	2599	2600
3.0	2442	2438	2480	2455	2461	2449	2461	2459	2480	2487
6.0	2176	2168	2186	2147	2152	2131	2145	2143	2173	2187
9.0	1794	1791	1804	1761	1759	1730	1751	1746	1784	1800
12.0	1380	1379	1395	1351	1356	1329	1349	1352	1393	1406
15.0	1003	1004	1025	998.4	1004	984.3	1002	999.3	1039	1047
18.0	650.9	648.7	685.1	677.2	692.3	675.6	693.1	691.6	726.6	739.9
21.0	404.0	407.0	435.0	432.0	444.3	427.6	441.4	444.2	473.8	485.1
24.0	243.2	244.9	259.3	257.8	261.6	252.7	259.1	258.6	275.9	286.7
27.0	150.4	151.4	158.6	157.8	156.7	154.1	159.2	158.4	168.6	175.0
30.0	96.72	97.58	101.2	98.61	97.76	97.70	99.89	100.3	106.3	111.7
33.0	52.31	52.88	60.50	58.34	60.27	59.72	62.68	62.25	66.14	69.77
36.0	24.46	24.25	26.10	26.11	26.19	26.16	27.67	27.36	29.59	31.37
39.0	17.08	16.68	17.76	18.09	18.23	17.55	17.95	17.67	18.61	18.83
42.0	11.33	11.46	12.27	12.30	13.31	12.69	12.57	12.69	13.67	13.25
45.0	9.287	9.352	9.328	9.374	9.094	8.720	8.724	8.585	8.732	8.654
48.0	7.824	7.902	7.877	7.871	7.708	7.535	7.519	7.410	7.458	7.293
51.0	6.254	6.268	6.181	6.213	6.168	6.160	6.208	6.174	6.256	6.165
54.0	4.612	4.575	4.646	4.624	4.577	4.635	4.742	4.738	4.871	4.849
57.0	3.438	3.543	3.631	3.660	3.650	3.625	3.660	3.656	3.799	3.757
60.0	2.914	3.022	3.016	3.089	3.228	3.108	3.118	3.130	3.171	3.152
63.0	2.485	2.550	2.552	2.636	2.773	2.649	2.662	2.704	2.731	2.704
66.0	2.083	2.157	2.181	2.227	2.261	2.227	2.248	2.275	2.303	2.282
69.0	1.724	1.779	1.813	1.833	1.783	1.809	1.813	1.873	1.888	1.892
72.0	1.335	1.400	1.494	1.427	1.398	1.440	1.417	1.484	1.503	1.527
75.0	0.8705	0.8845	0.9274	0.9185	1.044	1.059	1.045	1.116	1.155	1.169
78.0	0.6719	0.6445	0.6378	0.6608	0.6488	0.6783	0.6728	0.7089	0.7078	0.7417
81.0	0.4991	0.4696	0.4650	0.4902	0.4826	0.5077	0.5022	0.5318	0.5306	0.5602
84.0	0.3374	0.3100	0.3011	0.3307	0.3186	0.3438	0.3339	0.3635	0.3579	0.3876
87.0	0.1864	0.1701	0.1504	0.1884	0.1679	0.1929	0.1854	0.2125	0.2007	0.2322
90.0	0.0590	0.0525	0.0415	0.0503	0.0503	0.0612	0.0590	0.0765	0.0722	0.0940
G/C	300.0	315.0	330.0	345.0						
0.0	2597	2599	2577	2578						
3.0	2501	2503	2504	2508						
6.0	2220	2232	2275	2281						
9.0	1843	1851	1931	1937						
12.0	1442	1440	1526	1521						
15.0	1072	1072	1124	1126						
18.0	763.4	756.6	784.2	780.5						
21.0	503.5	492.5	498.1	496.0						

C Range: 0 - 360DEG

C Interval: 15.0DEG

Test Speed: HIGH

Temperature: 25.3DEG

Operators: Meng Yongjian

Test Date: 2017-06-15

γ Range: 0 - 90DEG

γ Interval: 1.0DEG

Test System: EVERFINE GO-2000B_V1 SYSTEM V2.0.288

Humidity: 52%

Test Distance: 5.850m [K=1.0000]

Remarks:

Photometric Data Table [cd]

24.0	299.8	291.3	296.5	293.7
27.0	180.6	178.0	185.8	182.3
30.0	116.4	116.3	121.5	120.0
33.0	73.97	74.36	78.45	78.24
36.0	34.28	33.07	32.95	31.58
39.0	19.92	18.74	18.10	17.96
42.0	13.53	12.87	12.36	11.64
45.0	8.474	8.213	8.247	8.284
48.0	7.191	6.966	7.047	7.069
51.0	6.093	5.894	5.984	5.988
54.0	4.841	4.744	4.904	4.892
57.0	3.779	3.665	3.781	3.779
60.0	3.131	3.047	3.068	3.124
63.0	2.685	2.612	2.637	2.699
66.0	2.284	2.231	2.257	2.321
69.0	1.899	1.866	1.905	1.938
72.0	1.507	1.488	1.566	1.549
75.0	1.140	1.125	1.164	1.164
78.0	0.7362	0.7505	0.7428	0.7703
81.0	0.5525	0.5667	0.5591	0.5865
84.0	0.3776	0.3898	0.3819	0.4073
87.0	0.2138	0.2300	0.2203	0.2453
90.0	0.0896	0.0918	0.0853	0.1050

C Range: 0 - 360DEG
 C Interval: 15.0DEG
 Test Speed: HIGH
 Temperature: 25.3DEG
 Operators: Meng Yongjian
 Test Date: 2017-06-15

γ Range: 0 - 90DEG
 γ Interval: 1.0DEG
 Test System: EVERFINE GO-2000B_V1 SYSTEM V2.0.288
 Humidity: 52%
 Test Distance: 5.850m [K=1.0000]
 Remarks: