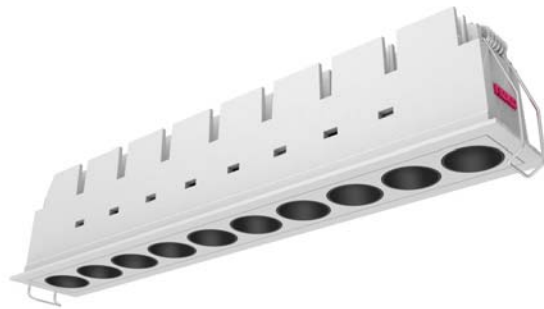


LED Downlight FUSION Series FF10-22W-930-24D



Light Output Ratio:	100.0%	
Luminaire Power:	25.14 W	
SHR Nominal:	0.00	Calculated using the TM5
SHR Maximum:	1.00	fine grid method.

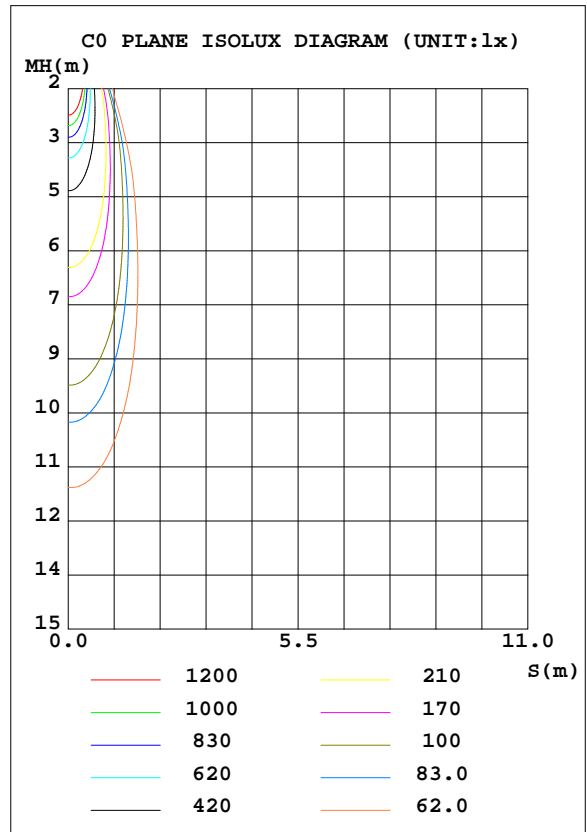
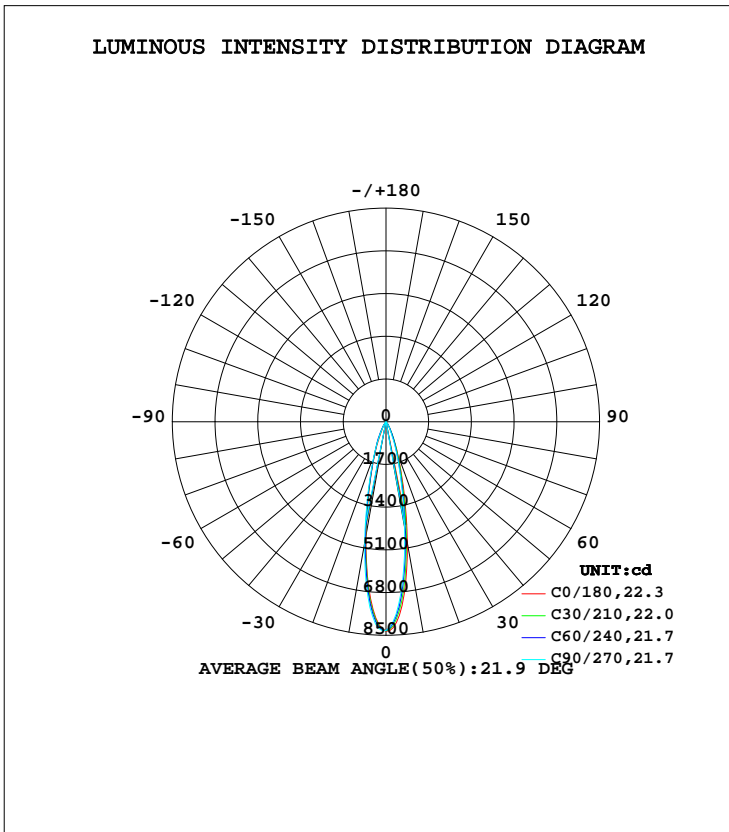
C Range: 0 - 360DEG  
 C Interval: 15.0DEG  
 Test Speed: HIGH  
 Temperature: 25.3DEG  
 Operators: Meng yongjian  
 Test Date: 2018-06-08

$\gamma$  Range: 0 - 90DEG  
 $\gamma$  Interval: 1.0DEG  
 Test System: EVERFINE GO-2000B\_V1 SYSTEM V2.0.288  
 Humidity: 52%  
 Test Distance: 5.850m [K=1.0000]  
 Remarks:

LUMINAIRE PHOTOMETRIC TEST REPORT

Test:U:220.7V I:0.1182A P:25.14W PF:0.9633 Freq:49.90Hz Lamp Flux:1715.09x1 lm		
NAME: FF10-22W-930-24D	TYPE:Downlight	SERIAL No.:
SPEC.:3000K	DIM.: L290mm*W45mm*H60mm	
MFR.: NEKO LIGHTING AG		

DATA OF LAMP		PHOTOMETRIC DATA Eff: 68.22 lm/W			
MODEL	OSRAM-3000K	I <sub>max</sub> (cd)	8340	S/MH(C0/180)	0.37
NOMINAL POWER(W)	24	LOR(%)	100.0	S/MH(C90/270)	0.39
RATED VOLTAGE(V)	220	TOTAL FLUX(lm)	1715.1	η UP, DN(C0-180)	0.0,48.1
NOMINAL FLUX(lm)	1715.09	CIE CLASS	DIRECT	η UP, DN(C180-360)	0.0,51.9
LAMPS INSIDE	1	η up(%)	0.0	CIBSE SHR NOM	0.00
TEST VOLTAGE(V)	220	η down(%)	100.0	CIBSE SHR MAX	1.00



C Range: 0 - 360DEG  
 C Interval: 15.0DEG  
 Test Speed: HIGH  
 Temperature:25.3DEG  
 Operators:Meng yongjian  
 Test Date:2018-06-08

γ Range: 0 - 90DEG  
 γ Interval: 1.0DEG  
 Test System:EVERFINE GO-2000B\_V1 SYSTEM V2.0.288  
 Humidity:52%  
 Test Distance:5.850m [K=1.0000]  
 Remarks:

**ZONAL FLUX DIAGRAM**

ZONAL FLUX DIAGRAM:

γ	C0	C45	C90	C135	C180	C225	C270	C315	γ	Φ zone	Φ total	%lum, lamp
10	4903	4613	4273	4350	4595	4618	4904	5005	0- 10	599.5	599.5	35,35
20	1372	1283	1116	1185	1221	1293	1333	1446	10- 20	702.5	1302	75.9,75.9
30	276.2	399.6	255.8	354.2	248.7	395.2	279.6	453.2	20- 30	306.0	1608	93.8,93.8
40	24.70	81.08	19.55	71.79	18.39	71.19	24.39	88.76	30- 40	95.50	1703	99.3,99.3
50	0.9896	4.693	0.7814	2.424	0.7600	4.258	0.9895	7.296	40- 50	10.72	1714	99.9,99.9
60	0.3743	0.2250	0.3129	0.1879	0.2774	0.2778	0.4172	0.3129	50- 60	0.5230	1715	100,100
70	0.1663	0.1071	0.1575	0.0962	0.1224	0.1400	0.1857	0.1531	60- 70	0.2062	1715	100,100
80	0.0875	0.0656	0.0984	0.0678	0.0633	0.0831	0.0896	0.0897	70- 80	0.1112	1715	100,100
90	0.0634	0.0656	0.0678	0.0678	0.0415	0.0459	0.0481	0.0503	80- 90	0.0715	1715	100,100
100									90-100			
110									100-110			
120									110-120			
130									120-130			
140									130-140			
150									140-150			
160									150-160			
170									160-170			
180									170-180			
DEG	LUMINOUS INTENSITY:cd									UNIT:lm		

Conical surface Flux(90deg): 1712.3 lm

%lum = 99.8%  
%lamp = 99.8%

Conical surface Flux(120deg): 1714.7 lm

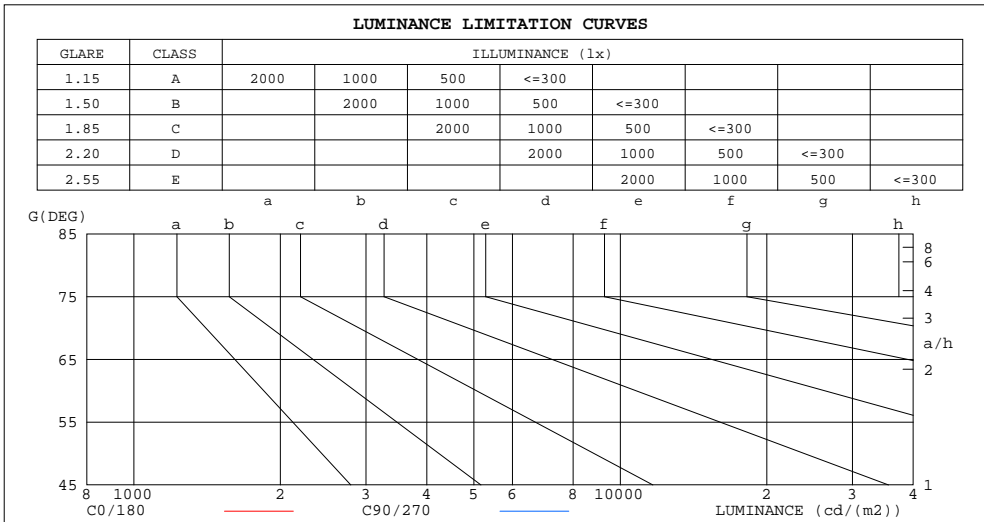
%lum = 100.0%  
%lamp = 100.0%

C Range: 0 - 360DEG  
C Interval: 15.0DEG  
Test Speed: HIGH  
Temperature:25.3DEG  
Operators:Meng yongjian  
Test Date:2018-06-08

γ Range: 0 - 90DEG  
γ Interval: 1.0DEG  
Test System:EVERFINE GO-2000B\_V1 SYSTEM V2.0.288  
Humidity:52%  
Test Distance:5.850m [K=1.0000]  
Remarks:

**LUMINANCE LIMITATION CURVES**

Test:U:220.7V I:0.1182A P:25.14W PF:0.9633 Freq:49.90Hz Lamp Flux:1715.09x1 lm		
NAME: FF10-22W-930-24D	TYPE:Downlight	SERIAL No.:
SPEC.:3000K	DIM.: L290mm*W45mm*H60mm	
MFR.: NEKO LIGHTING AG		



LUMINANCE cd/(m2)		
G(DEG)	C0/180	C90/270
85	63	69
80	39	43
75	34	36
70	37	35
65	44	39
60	57	48
55	80	65
50	118	93
45	372	165

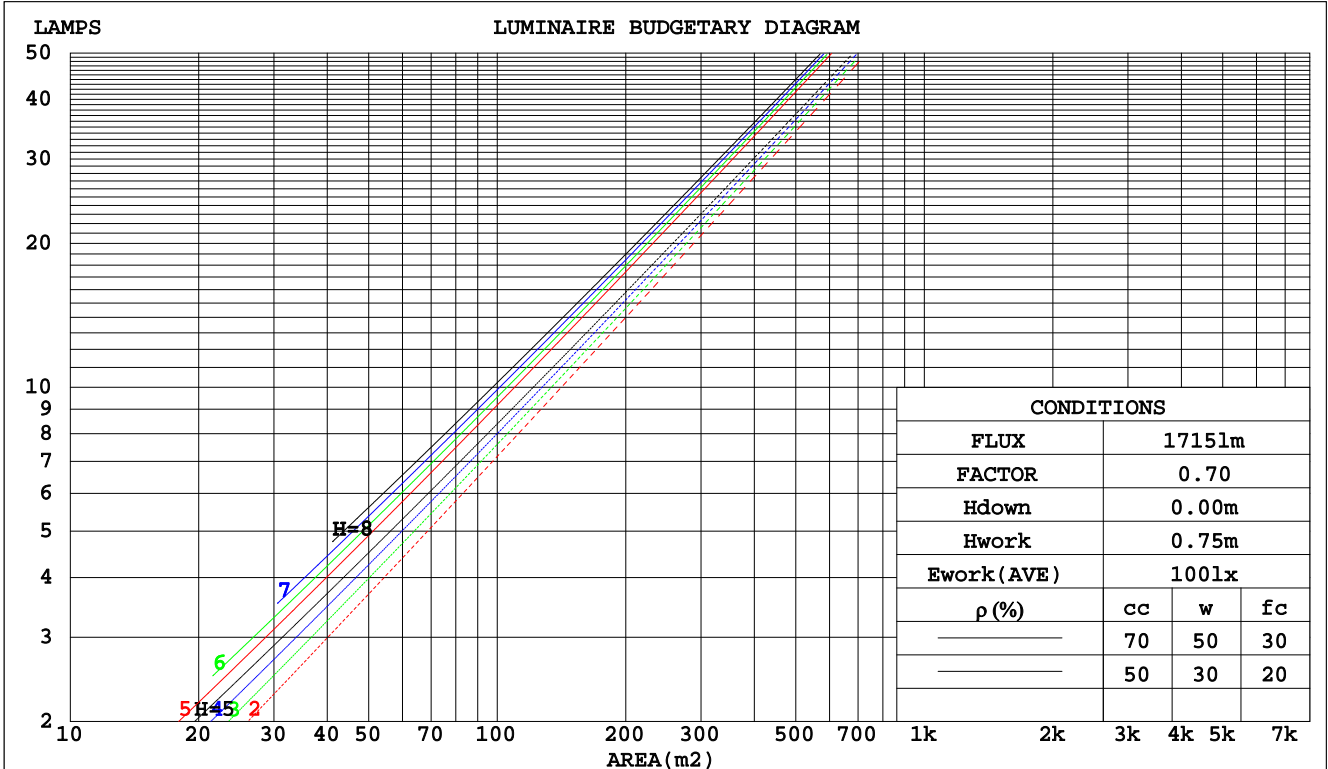
C Range: 0 - 360DEG  
 C Interval: 15.0DEG  
 Test Speed: HIGH  
 Temperature:25.3DEG  
 Operators:Meng yongjian  
 Test Date:2018-06-08

$\gamma$  Range: 0 - 90DEG  
 $\gamma$  Interval: 1.0DEG  
 Test System:EVERFINE GO-2000B\_V1 SYSTEM V2.0.288  
 Humidity:52%  
 Test Distance:5.850m [K=1.0000]  
 Remarks:

**CU AND LUMINAIRE BUDGETARY ESTIMATE DIAGRAM**

Test:U:220.7V I:0.1182A P:25.14W PF:0.9633 Freq:49.90Hz Lamp Flux:1715.09x1 lm		
NAME: FF10-22W-930-24D	TYPE:Downlight	SERIAL No.:
SPEC.:3000K	DIM.: L290mm*W45mm*H60mm	
MFR.: NEKO LIGHTING AG		

pcc	80%			70%			50%			30%			10%			0
pw	50%	30%	10%	50%	30%	10%	50%	30%	10%	50%	30%	10%	50%	30%	10%	0
pfc	20%			20%			20%			20%			20%			0
RCR	RCR:Room Cavity Ratio															
	Coefficients of Utilization(CU)															
0.0	1.19	1.19	1.19	1.16	1.16	1.16	1.11	1.11	1.11	1.06	1.06	1.06	1.02	1.02	1.02	1.00
1.0	1.13	1.11	1.09	1.11	1.09	1.07	1.07	1.05	1.04	1.03	1.02	1.01	.00	.99	.98	.97
2.0	1.07	1.04	1.02	1.06	1.03	1.01	1.03	1.01	.99	.00	.98	.97	.97	.96	.95	.93
3.0	1.03	.99	.96	1.01	.98	.95	.99	.96	.94	.97	.94	.93	.95	.93	.91	.90
4.0	.99	.95	.92	.98	.94	.91	.96	.93	.90	.94	.91	.89	.92	.90	.88	.87
5.0	.95	.91	.88	.94	.90	.87	.92	.89	.87	.91	.88	.86	.90	.87	.85	.84
6.0	.92	.87	.84	.91	.87	.84	.90	.86	.83	.88	.85	.83	.87	.85	.82	.81
7.0	.88	.84	.81	.88	.84	.81	.87	.83	.81	.86	.83	.80	.85	.82	.80	.79
8.0	.86	.81	.79	.85	.81	.78	.84	.81	.78	.83	.80	.78	.83	.80	.78	.77
9.0	.83	.79	.76	.83	.79	.76	.82	.78	.76	.81	.78	.76	.80	.77	.75	.74
10.0	.81	.77	.74	.80	.76	.74	.80	.76	.74	.79	.76	.73	.78	.75	.73	.72



C Range: 0 - 360DEG  
 C Interval: 15.0DEG  
 Test Speed: HIGH  
 Temperature: 25.3DEG  
 Operators: Meng yongjian  
 Test Date: 2018-06-08

γ Range: 0 - 90DEG  
 γ Interval: 1.0DEG  
 Test System: EVERFINE GO-2000B\_V1 SYSTEM V2.0.288  
 Humidity: 52%  
 Test Distance: 5.850m [K=1.0000]  
 Remarks:

WEC AND CCEC

Test:U:220.7V I:0.1182A P:25.14W PF:0.9633 Freq:49.90Hz Lamp Flux:1715.09x1 lm		
NAME: FF10-22W-930-24D	TYPE:Downlight	SERIAL No.:
SPEC.:3000K	DIM.: L290mm*W45mm*H60mm	
MFR.: NEKO LIGHTING AG		

ρcc	80%			70%			50%			30%			10%			0
ρw	50%	30%	10%	50%	30%	10%	50%	30%	10%	50%	30%	10%	50%	30%	10%	0
ρfc	20%			20%			20%			20%			20%			0
RCR	RCR:Room Cavity Ratio						Wall Exitance Coefficients(WEC)									
0.0																
1.0	.138	.078	.025	.131	.075	.024	.119	.068	.022	.108	.062	.020	.097	.056	.018	
2.0	.128	.070	.022	.123	.068	.021	.113	.063	.019	.103	.058	.018	.094	.053	.017	
3.0	.120	.064	.019	.115	.062	.019	.107	.058	.018	.099	.054	.017	.091	.051	.016	
4.0	.112	.058	.017	.109	.057	.017	.101	.054	.016	.095	.051	.015	.089	.048	.015	
5.0	.106	.054	.016	.103	.053	.015	.097	.050	.015	.091	.048	.014	.086	.046	.014	
6.0	.101	.050	.014	.098	.049	.014	.092	.047	.014	.088	.045	.013	.083	.044	.013	
7.0	.096	.047	.013	.093	.046	.013	.089	.045	.013	.084	.043	.013	.080	.042	.012	
8.0	.091	.045	.013	.089	.044	.012	.085	.043	.012	.081	.041	.012	.078	.040	.012	
9.0	.087	.042	.012	.085	.042	.012	.082	.040	.011	.079	.039	.011	.075	.038	.011	
10.0	.084	.040	.011	.082	.040	.011	.079	.039	.011	.076	.038	.011	.073	.037	.011	

ρcc	80%			70%			50%			30%			10%			0
ρw	50%	30%	10%	50%	30%	10%	50%	30%	10%	50%	30%	10%	50%	30%	10%	0
ρfc	20%			20%			20%			20%			20%			0
RCR	RCR:Room Cavity Ratio						Ceiling Cavity Exitance Coefficients(CCEC)									
0.0	.190	.190	.190	.163	.163	.163	.111	.111	.111	.064	.064	.064	.020	.020	.020	
1.0	.168	.158	.148	.144	.135	.127	.099	.093	.088	.057	.054	.051	.018	.017	.017	
2.0	.150	.133	.118	.129	.114	.102	.088	.079	.071	.051	.046	.042	.016	.015	.014	
3.0	.136	.113	.096	.116	.098	.083	.080	.068	.058	.046	.040	.034	.015	.013	.011	
4.0	.123	.098	.079	.106	.085	.068	.073	.059	.048	.042	.035	.028	.014	.011	.009	
5.0	.113	.086	.066	.097	.074	.057	.067	.052	.040	.039	.030	.024	.012	.010	.008	
6.0	.104	.076	.055	.089	.066	.048	.062	.046	.034	.036	.027	.020	.012	.009	.007	
7.0	.096	.068	.047	.083	.059	.041	.057	.041	.029	.033	.024	.017	.011	.008	.006	
8.0	.090	.061	.041	.078	.053	.036	.054	.037	.025	.031	.022	.015	.010	.007	.005	
9.0	.084	.055	.035	.073	.048	.031	.050	.034	.022	.029	.020	.013	.010	.007	.004	
10.0	.080	.050	.031	.069	.044	.027	.048	.031	.019	.028	.018	.011	.009	.006	.004	

C Range: 0 - 360DEG  
 C Interval: 15.0DEG  
 Test Speed: HIGH  
 Temperature:25.3DEG  
 Operators:Meng yongjian  
 Test Date:2018-06-08

γ Range: 0 - 90DEG  
 γ Interval: 1.0DEG  
 Test System:EVERFINE GO-2000B\_V1 SYSTEM V2.0.288  
 Humidity:52%  
 Test Distance:5.850m [K=1.0000]  
 Remarks:

UGR(Unified Glare Rating) Table

Test:U:220.7V I:0.1182A P:25.14W PF:0.9633 Freq:49.90Hz Lamp Flux:1715.09x1 lm		
NAME: FF10-22W-930-24D	TYPE:Downlight	SERIAL No.:
SPEC.:3000K	DIM.: L290mm*W45mm*H60mm	
MFR.: NEKO LIGHTING AG		

ceiling/cavity	0.7	0.7	0.5	0.5	0.3	0.7	0.7	0.5	0.5	0.3
walls	0.5	0.3	0.5	0.3	0.3	0.5	0.3	0.5	0.3	0.3
working plane	0.2	0.2	0.2	0.2	0.2	0.2	0.2	0.2	0.2	0.2
Room dimensions	Viewed crosswise					Viewed endwise				
x = 2H y = 2H	5.9	6.6	6.1	6.7	6.9	5.6	6.3	5.8	6.5	6.6
3H	5.8	6.4	6.0	6.6	6.7	5.5	6.1	5.7	6.3	6.5
4H	5.7	6.3	5.9	6.5	6.7	5.4	6.0	5.7	6.2	6.4
6H	5.6	6.1	5.9	6.4	6.6	5.3	5.9	5.6	6.1	6.3
8H	5.5	6.1	5.8	6.3	6.6	5.3	5.8	5.6	6.1	6.3
12H	5.5	6.0	5.8	6.3	6.5	5.2	5.8	5.5	6.0	6.3
4H 2H	5.7	6.3	5.9	6.5	6.7	5.4	6.0	5.7	6.2	6.4
3H	5.5	6.0	5.8	6.3	6.5	5.2	5.8	5.5	6.0	6.3
4H	5.4	5.9	5.7	6.2	6.5	5.1	5.6	5.5	5.9	6.2
6H	5.3	5.7	5.7	6.0	6.4	5.0	5.5	5.4	5.8	6.1
8H	5.2	5.6	5.6	6.0	6.3	5.0	5.4	5.4	5.7	6.1
12H	5.2	5.5	5.6	5.9	6.3	4.9	5.3	5.3	5.7	6.0
8H 4H	5.2	5.6	5.6	6.0	6.3	5.0	5.4	5.4	5.7	6.1
6H	5.1	5.5	5.6	5.8	6.3	4.9	5.2	5.3	5.6	6.0
8H	5.1	5.4	5.5	5.8	6.2	4.8	5.1	5.3	5.5	5.9
12H	5.0	5.3	5.5	5.7	6.2	4.7	5.0	5.2	5.4	5.9
12H 4H	5.2	5.5	5.6	5.9	6.3	4.9	5.3	5.3	5.7	6.0
6H	5.1	5.4	5.5	5.8	6.2	4.8	5.1	5.3	5.5	5.9
8H	5.0	5.3	5.5	5.7	6.2	4.7	5.0	5.2	5.4	5.9
Variations with the observer position at spacings:										
S = 1.0H	+ 3.4 / -20.6					+ 3.3 / -19.6				
1.5H	+ 6.2 / -19.9					+ 6.1 / -18.7				
2.0H	+ 6.0 / - 4.7					+ 3.4 / - 1.9				

CIE Pub.117, 1715 lm Total Lamp Luminous Flux Correct (8log(F/F0) = 1.9)

C Range: 0 - 360DEG  
 C Interval: 15.0DEG  
 Test Speed: HIGH  
 Temperature:25.3DEG  
 Operators:Meng yongjian  
 Test Date:2018-06-08

γ Range: 0 - 90DEG  
 γ Interval: 1.0DEG  
 Test System:EVERFINE GO-2000B\_V1 SYSTEM V2.0.288  
 Humidity:52%  
 Test Distance:5.850m [K=1.0000]  
 Remarks:

UTILIZATION FACTORS TABLE

Test:U:220.7V I:0.1182A P:25.14W PF:0.9633 Freq:49.90Hz Lamp Flux:1715.09x1 lm		
NAME: FF10-22W-930-24D	TYPE:Downlight	SERIAL No.:
SPEC.:3000K	DIM.: L290mm*W45mm*H60mm	
MFR.: NEKO LIGHTING AG		

REFLECTANCE										
Ceiling	0.8	0.8	0.8	0.7	0.7	0.7	0.5	0.5	0.5	0
Walls	0.7	0.5	0.3	0.7	0.5	0.3	0.7	0.5	0.3	0
Working plane	0.2	0.2	0.2	0.2	0.2	0.2	0.2	0.2	0.2	0
ROOM INDEX	UTILIZATION FACTORS(PERCENT) $k(RI) \times RCR = 5$									
k = 0.60	91	85	82	91	85	82	90	85	82	79
0.80	98	93	90	97	93	90	96	92	89	86
1.00	102	97	94	101	96	93	100	96	93	89
1.25	105	101	98	104	100	97	102	99	96	93
1.50	108	104	101	107	103	100	104	101	99	95
2.00	110	106	103	109	105	103	106	103	101	96
2.50	111	108	105	110	107	104	107	104	102	97
3.00	113	110	107	111	108	106	108	106	104	98
4.00	115	112	110	113	110	109	109	107	106	99
5.00	116	114	112	114	112	111	110	109	107	100
ROOM INDEX	UF(total)									Direct
According to DIN EN 13032-2 2004			Suspended				SHRNOM = 1.25			

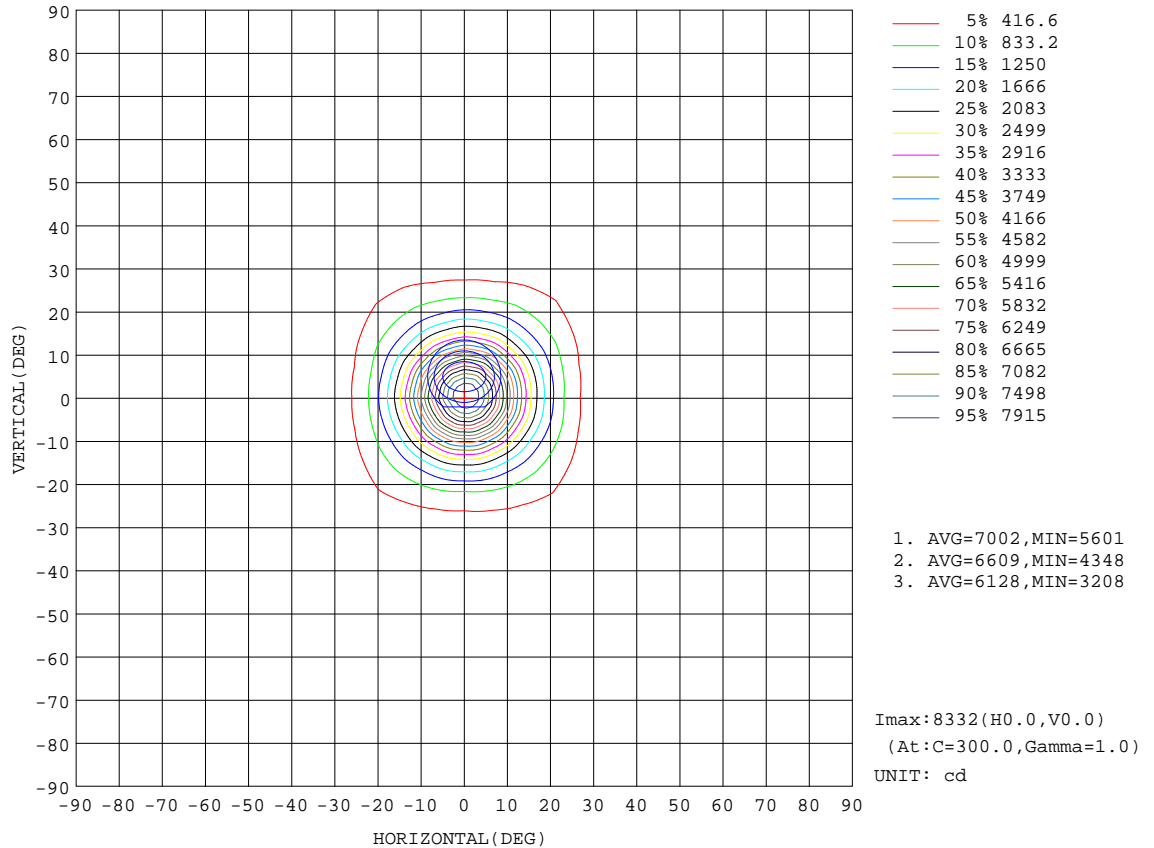
C Range: 0 - 360DEG  
 C Interval: 15.0DEG  
 Test Speed: HIGH  
 Temperature:25.3DEG  
 Operators:Meng yongjian  
 Test Date:2018-06-08

$\gamma$  Range: 0 - 90DEG  
 $\gamma$  Interval: 1.0DEG  
 Test System:EVERFINE GO-2000B\_V1 SYSTEM V2.0.288  
 Humidity:52%  
 Test Distance:5.850m [K=1.0000]  
 Remarks:



ISOCANDELA DIAGRAM

Test:U:220.7V I:0.1182A P:25.14W PF:0.9633 Freq:49.90Hz Lamp Flux:1715.09x1 lm		
NAME: FF10-22W-930-24D	TYPE:Downlight	SERIAL No.:
SPEC.:3000K	DIM.: L290mm*W45mm*H60mm	
MFR.: NEKO LIGHTING AG		

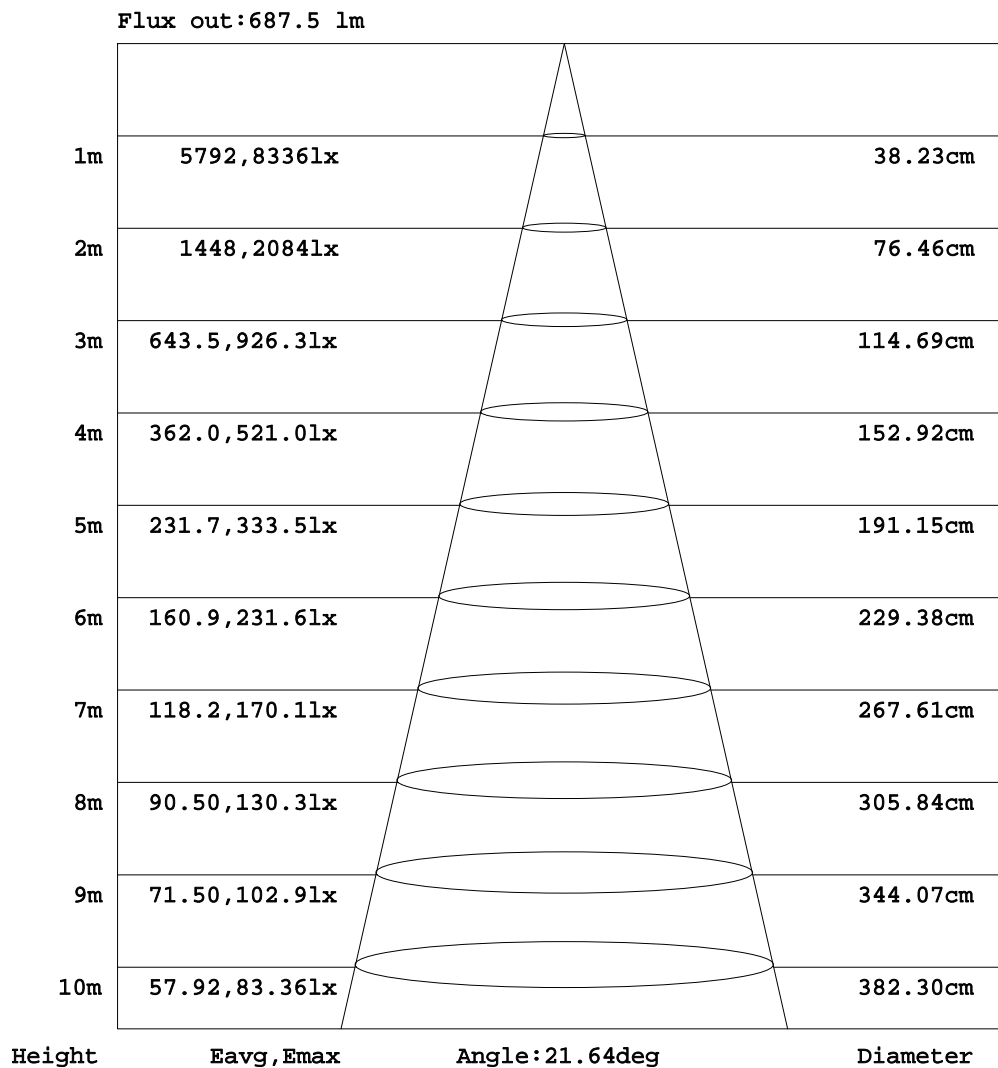


C Range: 0 - 360DEG  
C Interval: 15.0DEG  
Test Speed: HIGH  
Temperature:25.3DEG  
Operators:Meng yongjian  
Test Date:2018-06-08

γ Range: 0 - 90DEG  
γ Interval: 1.0DEG  
Test System:EVERFINE GO-2000B\_V1 SYSTEM V2.0.288  
Humidity:52%  
Test Distance:5.850m [K=1.0000]  
Remarks:

**AAI Figure**

Test:U:220.7V I:0.1182A P:25.14W PF:0.9633 Freq:49.90Hz Lamp Flux:1715.09x1 lm		
NAME: FF10-22W-930-24D	TYPE:Downlight	SERIAL No.:
SPEC.:3000K	DIM.: L290mm*W45mm*H60mm	
MFR.: NEKO LIGHTING AG		



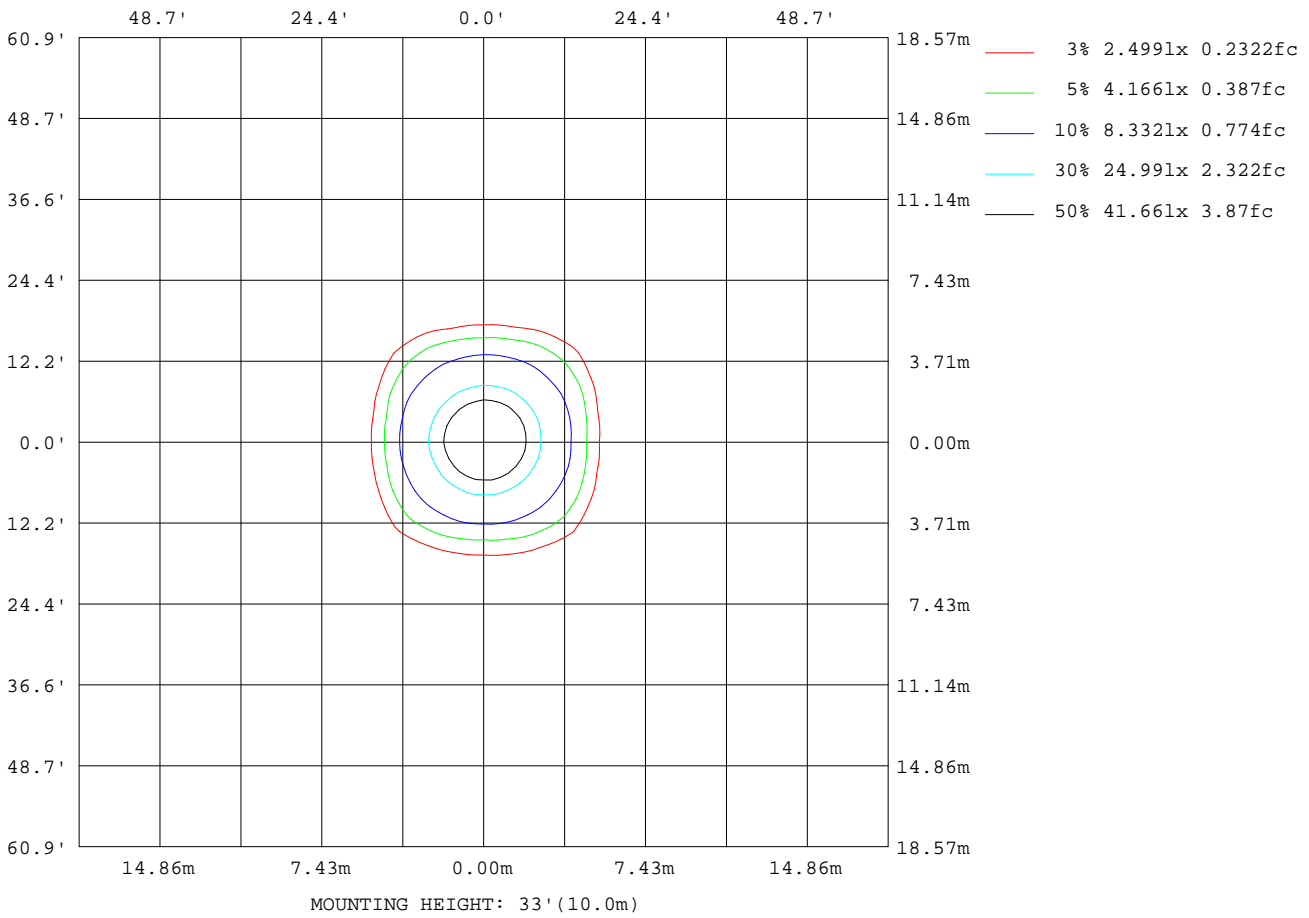
Note:The Curves indicate the illuminated area and the average illumination when the luminaire is at different distance.

C Range: 0 - 360DEG  
C Interval: 15.0DEG  
Test Speed: HIGH  
Temperature:25.3DEG  
Operators:Meng yongjian  
Test Date:2018-06-08

γ Range: 0 - 90DEG  
γ Interval: 1.0DEG  
Test System:EVERFINE GO-2000B\_V1 SYSTEM V2.0.288  
Humidity:52%  
Test Distance:5.850m [K=1.0000]  
Remarks:

**ISOLUX DIAGRAM**

Test:U:220.7V I:0.1182A P:25.14W PF:0.9633 Freq:49.90Hz Lamp Flux:1715.09x1 lm		
NAME: FF10-22W-930-24D	TYPE:Downlight	SERIAL No.:
SPEC.:3000K	DIM.: L290mm*W45mm*H60mm	
MFR.: NEKO LIGHTING AG		



C Range: 0 - 360DEG  
 C Interval: 15.0DEG  
 Test Speed: HIGH  
 Temperature:25.3DEG  
 Operators:Meng yongjian  
 Test Date:2018-06-08

γ Range: 0 - 90DEG  
 γ Interval: 1.0DEG  
 Test System:EVERFINE GO-2000B\_V1 SYSTEM V2.0.288  
 Humidity:52%  
 Test Distance:5.850m [K=1.0000]  
 Remarks:

LED Avg.L Report

Test:U:220.7V I:0.1182A P:25.14W PF:0.9633 Freq:49.90Hz Lamp Flux:1715.09x1 lm		
NAME: FF10-22W-930-24D	TYPE:Downlight	SERIAL No.:
SPEC.:3000K	DIM.: L290mm*W45mm*H60mm	
MFR.: NEKO LIGHTING AG		

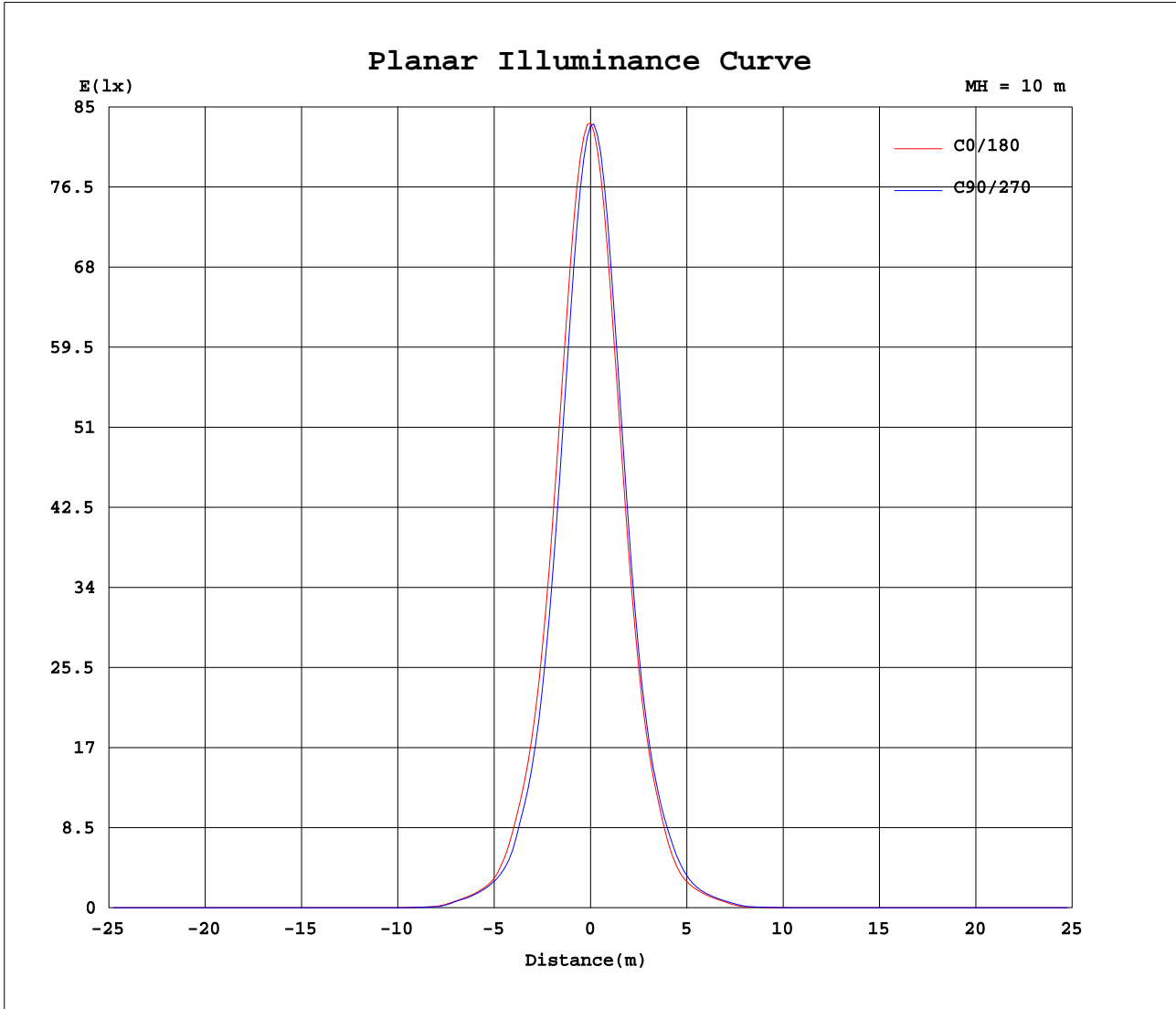
AvgL	cd/m2
L_0~180(65)av	38
L_0~180(75)av	29
L_0~180(85)av	50
L_90~270(65)av	44
L_90~270(75)av	38
L_90~270(85)av	62
L_45(65)av	31
L_45(75)av	28
L_45(85)av	58

Standard: GB/T 29293-2012

C Range: 0 - 360DEG  
C Interval: 15.0DEG  
Test Speed: HIGH  
Temperature:25.3DEG  
Operators:Meng yongjian  
Test Date:2018-06-08

$\gamma$  Range: 0 - 90DEG  
 $\gamma$  Interval: 1.0DEG  
Test System:EVERFINE GO-2000B\_V1 SYSTEM V2.0.288  
Humidity:52%  
Test Distance:5.850m [K=1.0000]  
Remarks:

Planar Illuminance Curve



C Range: 0 - 360DEG  
 C Interval: 15.0DEG  
 Test Speed: HIGH  
 Temperature: 25.3DEG  
 Operators: Meng yongjian  
 Test Date: 2018-06-08

$\gamma$  Range: 0 - 90DEG  
 $\gamma$  Interval: 1.0DEG  
 Test System: EVERFINE GO-2000B\_V1 SYSTEM V2.0.288  
 Humidity: 52%  
 Test Distance: 5.850m [K=1.0000]  
 Remarks:

LUMINOUS DISTRIBUTION INTENSITY DATA

Test:U:220.7V I:0.1182A P:25.14W PF:0.9633 Freq:49.90Hz Lamp Flux:1715.09x1 lm		
NAME: FF10-22W-930-24D	TYPE:Downlight	SERIAL No.:
SPEC.:3000K	DIM.: L290mm*W45mm*H60mm	
MFR.: NEKO LIGHTING AG		

Table--1

UNIT: cd

C( DEG) γ (DEG)	0	15	30	45	60	75	90	105	120	135	150	165	180	195	210	225	240	255	270
0	8332	8321	8318	8314	8308	8310	8304	8312	8300	8283	8273	8284	8332	8321	8318	8314	8308	8310	8304
5	7354	7314	7166	7128	6988	6969	6856	6879	6808	6839	6806	6903	7077	7062	7172	7149	7259	7270	7402
10	4903	4866	4675	4613	4431	4403	4273	4318	4276	4350	4319	4419	4595	4546	4657	4618	4756	4734	4904
15	2659	2633	2506	2460	2327	2299	2218	2259	2240	2307	2288	2350	2442	2416	2481	2457	2523	2512	2614
20	1372	1361	1310	1283	1202	1167	1116	1137	1138	1185	1174	1187	1221	1225	1291	1293	1315	1291	1333
25	592	635	703	708	630	526	483	510	591	642	600	510	492	525	659	717	724	643	625
30	276	291	334	400	319	276	256	265	295	354	285	255	249	255	308	395	360	287	280
35	132	142	162	189	160	138	122	130	149	167	142	121	112	121	149	178	163	136	132
40	24.7	28.2	58.3	81.1	54.5	23.9	19.5	22.5	40.5	71.8	41.4	20.2	18.4	21.3	48.0	71.2	58.7	26.9	24.4
45	3.44	5.25	15.3	22.9	12.7	3.41	1.52	2.26	10.5	16.8	9.24	3.03	1.71	3.66	12.4	19.4	13.8	8.16	6.21
50	0.99	0.91	1.08	4.69	0.77	0.77	0.78	0.70	0.63	2.42	0.70	0.71	0.76	0.78	0.83	4.26	0.98	0.93	0.99
55	0.60	0.53	0.48	0.37	0.47	0.47	0.49	0.43	0.39	0.30	0.38	0.41	0.45	0.46	0.44	0.42	0.53	0.62	0.65
60	0.37	0.32	0.29	0.23	0.29	0.29	0.31	0.26	0.25	0.19	0.24	0.25	0.28	0.29	0.26	0.28	0.33	0.40	0.42
65	0.24	0.20	0.19	0.15	0.19	0.19	0.22	0.17	0.17	0.13	0.16	0.16	0.18	0.20	0.17	0.19	0.21	0.27	0.27
70	0.17	0.13	0.14	0.11	0.14	0.14	0.16	0.13	0.13	0.10	0.12	0.11	0.12	0.14	0.12	0.14	0.14	0.19	0.19
75	0.12	0.09	0.10	0.08	0.11	0.10	0.12	0.09	0.10	0.07	0.10	0.08	0.08	0.10	0.08	0.11	0.10	0.14	0.13
80	0.09	0.06	0.08	0.07	0.09	0.07	0.10	0.07	0.08	0.07	0.08	0.07	0.06	0.08	0.06	0.08	0.07	0.10	0.09
85	0.07	0.06	0.07	0.07	0.07	0.06	0.08	0.07	0.07	0.07	0.07	0.07	0.04	0.06	0.04	0.06	0.05	0.07	0.06
90	0.06	0.06	0.07	0.07	0.07	0.06	0.07	0.07	0.07	0.07	0.07	0.07	0.04	0.04	0.04	0.05	0.04	0.05	0.05

C Range: 0 - 360DEG  
 C Interval: 15.0DEG  
 Test Speed: HIGH  
 Temperature: 25.3DEG  
 Operators: Meng yongjian  
 Test Date: 2018-06-08

γ Range: 0 - 90DEG  
 γ Interval: 1.0DEG  
 Test System: EVERFINE GO-2000B\_V1 SYSTEM V2.0.288  
 Humidity: 52%  
 Test Distance: 5.850m [K=1.0000]  
 Remarks:

LUMINOUS DISTRIBUTION INTENSITY DATA

Test:U:220.7V I:0.1182A P:25.14W PF:0.9633 Freq:49.90Hz Lamp Flux:1715.09x1 lm		
NAME: FF10-22W-930-24D	TYPE:Downlight	SERIAL No.:
SPEC.:3000K	DIM.: L290mm*W45mm*H60mm	
MFR.: NEKO LIGHTING AG		

Table--2

UNIT: cd

C( DEG) γ (DEG)	285	300	315	330	345													
0	8312	8300	8283	8273	8284													
5	7403	7498	7422	7482	7413													
10	4912	5079	5005	5102	5000													
15	2640	2764	2747	2808	2739													
20	1352	1451	1446	1492	1428													
25	661	784	803	795	662													
30	299	382	453	366	294													
35	142	174	210	175	147													
40	29.0	68.6	88.8	71.1	31.8													
45	8.69	16.1	29.5	19.2	6.53													
50	0.97	1.18	7.30	1.81	1.01													
55	0.64	0.57	0.49	0.55	0.61													
60	0.42	0.36	0.31	0.32	0.38													
65	0.28	0.23	0.21	0.20	0.24													
70	0.20	0.15	0.15	0.13	0.16													
75	0.14	0.11	0.12	0.09	0.12													
80	0.11	0.08	0.09	0.07	0.09													
85	0.08	0.05	0.07	0.05	0.07													
90	0.05	0.05	0.05	0.05	0.05													

C Range: 0 - 360DEG  
 C Interval: 15.0DEG  
 Test Speed: HIGH  
 Temperature:25.3DEG  
 Operators:Meng yongjian  
 Test Date:2018-06-08

γ Range: 0 - 90DEG  
 γ Interval: 1.0DEG  
 Test System:EVERFINE GO-2000B\_V1 SYSTEM V2.0.288  
 Humidity:52%  
 Test Distance:5.850m [K=1.0000]  
 Remarks: