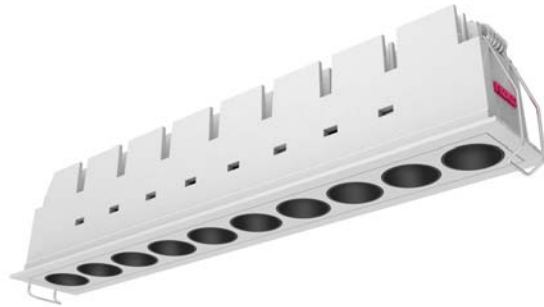


LED Downlight FUSION Series FF10-22W-840-40D Black



Light Output Ratio:	100.0%	
Luminaire Power:	25.23 W	
SHR Nominal:	0.50	Calculated using the TM5
SHR Maximum:	0.65	fine grid method.

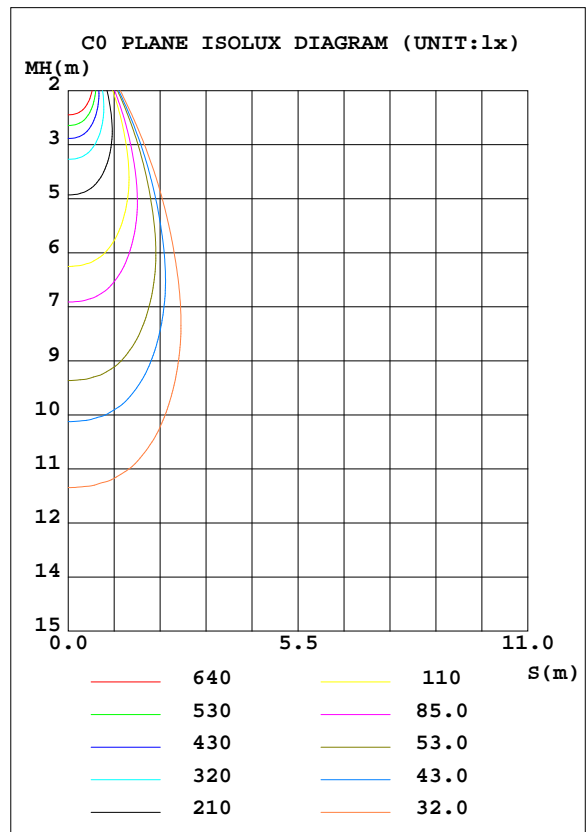
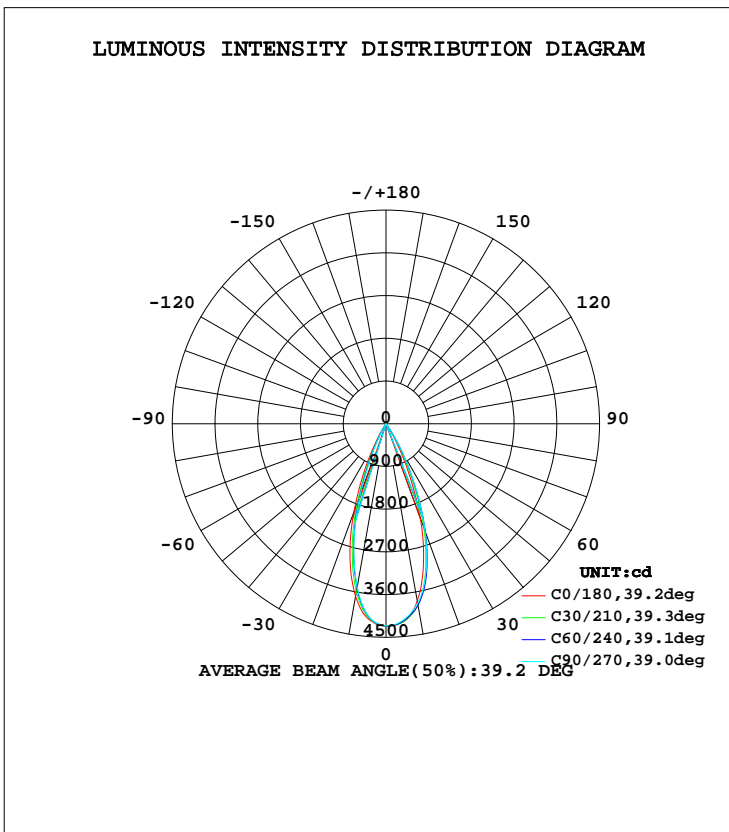
C Range: 0 - 360DEG
C Interval: 15.0DEG
Test Speed: HIGH
Temperature: 25.3DEG
Operators: Meng Yongjian
Test Date: 2017-06-11

γ Range: 0 - 90DEG
 γ Interval: 1.0DEG
Test System: EVERFINE GO-2000B_V1 SYSTEM V2.0.288
Humidity: 52%
Test Distance: 5.850m [K=1.0000]
Remarks:

LUMINAIRE PHOTOMETRIC TEST REPORT

Test:U:220.6V I:0.1186A P:25.23W PF:0.9639 Lamp Flux:1749.56x1 lm		
NAME: FF10-22W-840-40D Black	TYPE:Downlight	SERIAL No.:
SPEC.:4000K	DIM.: L290mm*W45mm*H60mm	
MFR.: NEKO LIGHTING AG		

DATA OF LAMP		PHOTOMETRIC DATA Eff: 69.35 lm/W			
MODEL	CREE-4000K	I _{max} (cd)	4266	S/MH(C0/180)	0.61
NOMINAL POWER(W)	24	LOR(%)	100.0	S/MH(C90/270)	0.55
RATED VOLTAGE(V)	220	TOTAL FLUX(lm)	1749.6	η UP, DN(C0-180)	0.0, 56.1
NOMINAL FLUX(lm)	1749.56	CIE CLASS	DIRECT	η UP, DN(C180-360)	0.0, 43.9
LAMPS INSIDE	1	η up(%)	0.0	CIBSE SHR NOM	0.50
TEST VOLTAGE(V)	220	η down(%)	100.0	CIBSE SHR MAX	0.65



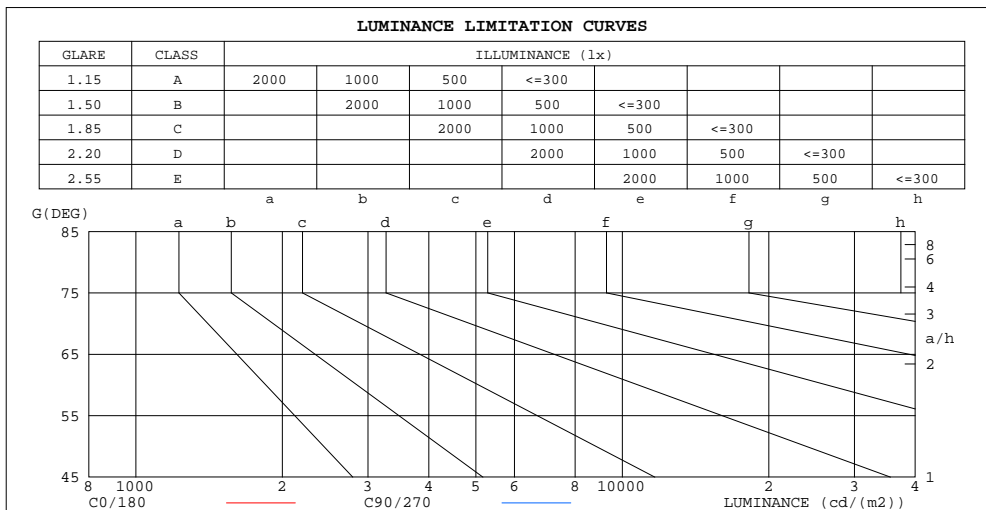
C Range: 0 - 360DEG
 C Interval: 15.0DEG
 Test Speed: HIGH
 Temperature: 25.3DEG
 Operators: Meng Yongjian
 Test Date: 2017-06-11

γ Range: 0 - 90DEG
 γ Interval: 1.0DEG
 Test System: EVERFINE GO-2000B_V1 SYSTEM V2.0.288
 Humidity: 52%
 Test Distance: 5.850m [K=1.0000]
 Remarks:

**ZONAL FLUX DIAGRAM
AND LUMINANCE LIMITATION CURVES**

ZONAL FLUX DIAGRAM:

γ	C0	C45	C90	C135	C180	C225	C270	C315	γ	Φ zone	Φ total	$\%lum, lamp$
10	3794	3901	3838	3800	3694	3532	3499	3601	0- 10	381.2	381.2	21.8,21.8
20	2118	2422	2424	2259	1988	1641	1580	1745	10- 20	804.8	1186	67.8,67.8
30	391.1	621.7	661.4	531.4	345.5	187.7	164.1	217.9	20- 30	494.6	1681	96.1,96.1
40	6.804	14.44	15.75	12.08	5.652	2.308	1.916	3.136	30- 40	66.28	1747	99.8,99.8
50	0.7222	0.8106	0.8427	0.7735	0.6575	0.5907	0.5418	0.6674	40- 50	1.622	1749	99.9,99.9
60	0.3763	0.3977	0.4463	0.3912	0.3452	0.3368	0.3059	0.3674	50- 60	0.4619	1749	100,100
70	0.2253	0.2273	0.2756	0.2338	0.2011	0.2100	0.1879	0.2253	60- 70	0.2903	1749	100,100
80	0.1357	0.1334	0.1772	0.1355	0.1092	0.1225	0.1027	0.1291	70- 80	0.1869	1749	100,100
90	0.0853	0.0962	0.1028	0.0962	0.0503	0.0590	0.0590	0.0634	80- 90	0.1066	1750	100,100
100									90-100			
110									100-110			
120									110-120			
130									120-130			
140									130-140			
150									140-150			
160									150-160			
170									160-170			
180									170-180			
DEG	LUMINOUS INTENSITY:cd									UNIT:lm		



LUMINANCE cd/(m2)		
G(DEG)	C0/180	C90/270
85	94	123
80	60	78
75	53	65
70	50	62
65	52	63
60	58	68
55	68	79
50	86	100
45	125	187

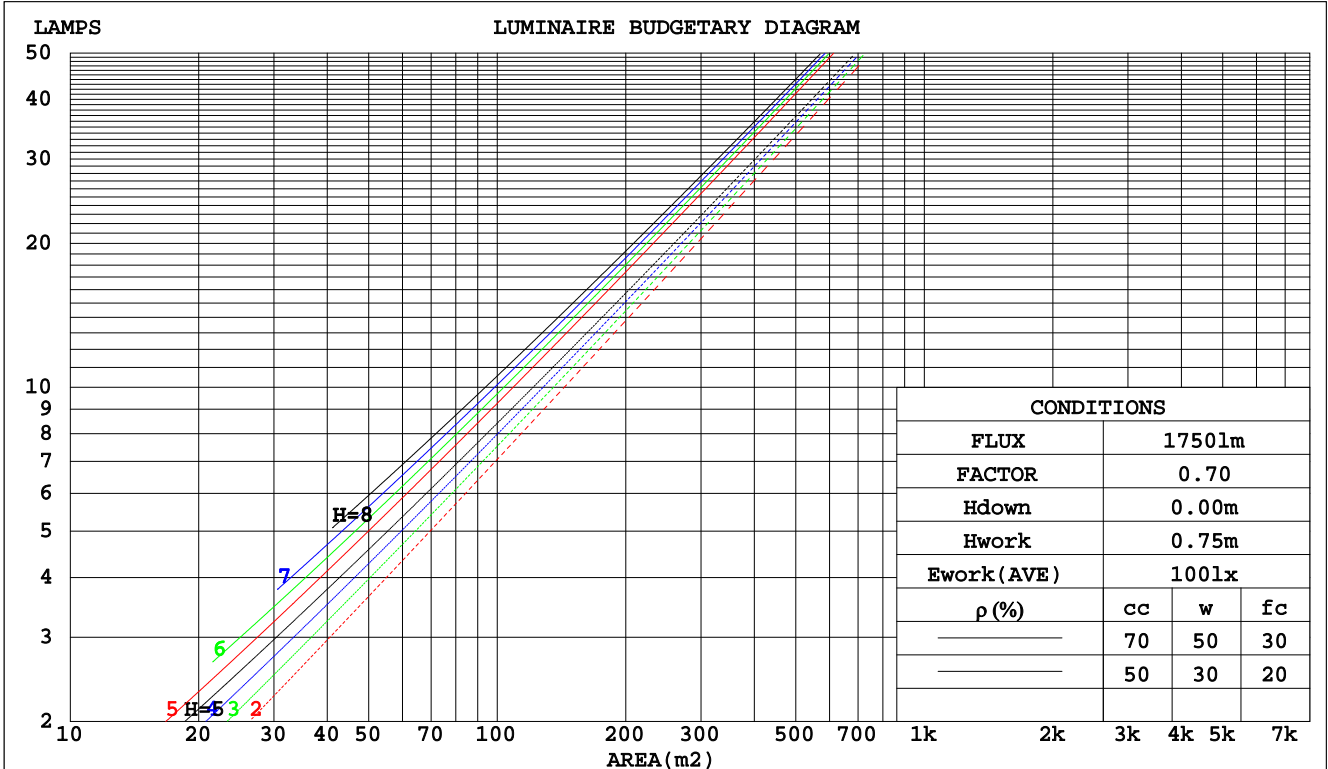
C Range: 0 - 360DEG
 C Interval: 15.0DEG
 Test Speed: HIGH
 Temperature: 25.3DEG
 Operators: Meng Yongjian
 Test Date: 2017-06-11

γ Range: 0 - 90DEG
 γ Interval: 1.0DEG
 Test System: EVERFINE GO-2000B_V1 SYSTEM V2.0.288
 Humidity: 52%
 Test Distance: 5.850m [K=1.0000]
 Remarks:

CU AND LUMINAIRE BUDGETARY ESTIMATE DIAGRAM

Test:U:220.6V I:0.1186A P:25.23W PF:0.9639 Lamp Flux:1749.56x1 lm		
NAME: FF10-22W-840-40D Black	TYPE:Downlight	SERIAL No.:
SPEC.:4000K	DIM.: L290mm*W45mm*H60mm	
MFR.: NEKO LIGHTING AG		

pcc	80%			70%			50%			30%			10%			0
	50%	30%	10%	50%	30%	10%	50%	30%	10%	50%	30%	10%	50%	30%	10%	0
pw																0
pfc																0
RCR	RCR:Room Cavity Ratio															
	Coefficients of Utilization(CU)															
0.0	1.19	1.19	1.19	1.16	1.16	1.16	1.11	1.11	1.11	1.06	1.06	1.06	1.02	1.02	1.02	1.00
1.0	1.12	1.10	1.08	1.10	1.08	1.07	1.06	1.05	1.04	1.03	1.01	1.00	.99	.98	.98	.96
2.0	1.07	1.03	1.01	1.05	1.02	.99	1.02	.99	.97	.99	.97	.95	.96	.95	.93	.92
3.0	1.01	.97	.94	1.00	.96	.94	.98	.95	.92	.95	.93	.91	.93	.91	.89	.88
4.0	.97	.92	.89	.96	.92	.89	.94	.90	.88	.92	.89	.87	.90	.88	.86	.84
5.0	.93	.88	.85	.92	.87	.84	.90	.86	.84	.88	.85	.83	.87	.84	.82	.81
6.0	.89	.84	.81	.88	.84	.80	.87	.83	.80	.85	.82	.79	.84	.81	.79	.78
7.0	.85	.80	.77	.85	.80	.77	.83	.79	.77	.82	.79	.76	.81	.78	.76	.75
8.0	.82	.77	.74	.81	.77	.74	.80	.76	.74	.79	.76	.73	.79	.75	.73	.72
9.0	.79	.74	.71	.78	.74	.71	.77	.74	.71	.77	.73	.71	.76	.73	.70	.69
10.0	.76	.71	.68	.76	.71	.68	.75	.71	.68	.74	.71	.68	.74	.70	.68	.67



C Range: 0 - 360DEG
C Interval: 15.0DEG
Test Speed: HIGH
Temperature:25.3DEG
Operators:Meng Yongjian
Test Date:2017-06-11

γ Range: 0 - 90DEG
γ Interval: 1.0DEG
Test System:EVERFINE GO-2000B_V1 SYSTEM V2.0.288
Humidity:52%
Test Distance:5.850m [K=1.0000]
Remarks:

WEC AND CCEC

Test:U:220.6V I:0.1186A P:25.23W PF:0.9639 Lamp Flux:1749.56x1 lm		
NAME: FF10-22W-840-40D Black	TYPE:Downlight	SERIAL No.:
SPEC.:4000K	DIM.: L290mm*W45mm*H60mm	
MFR.: NEKO LIGHTING AG		

ρcc	80%			70%			50%			30%			10%			0
ρw	50%	30%	10%	50%	30%	10%	50%	30%	10%	50%	30%	10%	50%	30%	10%	0
ρfc	20%			20%			20%			20%			20%			0
RCR	RCR:Room Cavity Ratio						Wall Exitance Coefficients(WEC)									
0.0																
1.0	.147	.084	.026	.140	.080	.025	.128	.073	.023	.116	.067	.022	.106	.061	.020	
2.0	.137	.075	.023	.132	.073	.022	.121	.068	.021	.112	.063	.020	.103	.058	.018	
3.0	.129	.069	.021	.124	.067	.020	.116	.063	.019	.108	.059	.018	.100	.056	.017	
4.0	.122	.063	.019	.118	.062	.018	.111	.059	.018	.104	.056	.017	.097	.053	.016	
5.0	.115	.059	.017	.112	.058	.017	.106	.055	.016	.100	.053	.016	.095	.051	.015	
6.0	.110	.055	.016	.107	.054	.016	.102	.052	.015	.097	.050	.015	.092	.048	.014	
7.0	.105	.052	.015	.103	.051	.015	.098	.049	.014	.093	.048	.014	.089	.046	.014	
8.0	.101	.049	.014	.098	.048	.014	.094	.047	.013	.090	.046	.013	.086	.044	.013	
9.0	.097	.047	.013	.095	.046	.013	.091	.045	.013	.087	.044	.013	.084	.043	.012	
10.0	.093	.045	.012	.091	.044	.012	.088	.043	.012	.085	.042	.012	.082	.041	.012	

ρcc	80%			70%			50%			30%			10%			0
ρw	50%	30%	10%	50%	30%	10%	50%	30%	10%	50%	30%	10%	50%	30%	10%	0
ρfc	20%			20%			20%			20%			20%			0
RCR	RCR:Room Cavity Ratio						Ceiling Cavity Exitance Coefficients(CCEC)									
0.0	.190	.190	.190	.163	.163	.163	.111	.111	.111	.064	.064	.064	.020	.020	.020	
1.0	.169	.158	.147	.145	.135	.127	.099	.093	.088	.057	.054	.051	.018	.017	.016	
2.0	.152	.133	.117	.130	.114	.101	.089	.079	.070	.051	.046	.041	.016	.015	.013	
3.0	.137	.113	.094	.118	.098	.082	.081	.068	.057	.047	.040	.034	.015	.013	.011	
4.0	.125	.098	.077	.108	.085	.067	.074	.059	.047	.043	.035	.028	.014	.011	.009	
5.0	.116	.086	.064	.099	.074	.056	.068	.052	.039	.040	.031	.023	.013	.010	.008	
6.0	.107	.076	.054	.092	.066	.047	.064	.046	.033	.037	.027	.020	.012	.009	.007	
7.0	.100	.068	.046	.086	.059	.040	.059	.041	.028	.035	.024	.017	.011	.008	.006	
8.0	.094	.062	.040	.081	.053	.034	.056	.038	.024	.033	.022	.015	.011	.007	.005	
9.0	.089	.056	.034	.076	.049	.030	.053	.034	.021	.031	.020	.013	.010	.007	.004	
10.0	.084	.052	.030	.072	.045	.026	.050	.032	.019	.029	.019	.011	.009	.006	.004	

C Range: 0 - 360DEG
 C Interval: 15.0DEG
 Test Speed: HIGH
 Temperature:25.3DEG
 Operators:Meng Yongjian
 Test Date:2017-06-11

γ Range: 0 - 90DEG
 γ Interval: 1.0DEG
 Test System:EVERFINE GO-2000B_V1 SYSTEM V2.0.288
 Humidity:52%
 Test Distance:5.850m [K=1.0000]
 Remarks:

UGR(Unified Glare Rating) Table

Test:U:220.6V I:0.1186A P:25.23W PF:0.9639 Lamp Flux:1749.56x1 lm		
NAME: FF10-22W-840-40D Black	TYPE:Downlight	SERIAL No.:
SPEC.:4000K	DIM.: L290mm*W45mm*H60mm	
MFR.: NEKO LIGHTING AG		

ceiling/cavity	0.7	0.7	0.5	0.5	0.3	0.7	0.7	0.5	0.5	0.3
walls	0.5	0.3	0.5	0.3	0.3	0.5	0.3	0.5	0.3	0.3
working plane	0.2	0.2	0.2	0.2	0.2	0.2	0.2	0.2	0.2	0.2
Room dimensions	Viewed crosswise					Viewed endwise				
x = 2H y = 2H	6.1	6.8	6.3	7.0	7.1	9.8	10.5	10.0	10.7	10.8
3H	6.0	6.6	6.2	6.8	7.0	9.6	10.3	9.9	10.5	10.7
4H	5.9	6.5	6.1	6.7	6.9	9.5	10.2	9.8	10.4	10.6
6H	5.8	6.4	6.1	6.6	6.9	9.5	10.1	9.7	10.3	10.5
8H	5.7	6.3	6.0	6.6	6.8	9.4	10.0	9.7	10.2	10.5
12H	5.7	6.3	6.0	6.5	6.8	9.4	9.9	9.7	10.2	10.4
4H 2H	5.9	6.5	6.1	6.7	6.9	9.5	10.2	9.8	10.4	10.6
3H	5.7	6.3	6.0	6.5	6.8	9.4	9.9	9.7	10.2	10.4
4H	5.6	6.1	5.9	6.4	6.7	9.3	9.8	9.6	10.1	10.4
6H	5.5	6.0	5.9	6.3	6.6	9.2	9.6	9.5	9.9	10.3
8H	5.5	5.9	5.8	6.2	6.6	9.1	9.5	9.5	9.9	10.2
12H	5.4	5.8	5.8	6.2	6.5	9.1	9.4	9.5	9.8	10.2
8H 4H	5.5	5.9	5.8	6.2	6.6	9.1	9.5	9.5	9.9	10.2
6H	5.3	5.7	5.8	6.1	6.5	9.0	9.3	9.4	9.7	10.2
8H	5.3	5.6	5.7	6.0	6.4	8.9	9.3	9.4	9.7	10.1
12H	5.2	5.5	5.7	5.9	6.4	8.9	9.1	9.4	9.6	10.1
12H 4H	5.4	5.8	5.8	6.2	6.5	9.1	9.4	9.5	9.8	10.2
6H	5.3	5.6	5.7	6.0	6.4	8.9	9.3	9.4	9.7	10.1
8H	5.2	5.5	5.7	5.9	6.4	8.9	9.1	9.3	9.6	10.1
Variations with the observer position at spacings:										
S = 1.0H	+ 4.1 / - 8.9					+ 5.8 / -13.9				
1.5H	+ 6.8 / - 8.5					+ 8.6 / -13.5				
2.0H	+ 1.1 / - 0.5					+ 2.1 / - 0.6				

CIE Pub.117 Corrected 1750 lm Total Lamp Luminous Flux.(8log(F/F0) = 1.9)

C Range: 0 - 360DEG
 C Interval: 15.0DEG
 Test Speed: HIGH
 Temperature:25.3DEG
 Operators:Meng Yongjian
 Test Date:2017-06-11

γ Range: 0 - 90DEG
 γ Interval: 1.0DEG
 Test System:EVERFINE GO-2000B_V1 SYSTEM V2.0.288
 Humidity:52%
 Test Distance:5.850m [K=1.0000]
 Remarks:

UTILIZATION FACTORS TABLE

Test:U:220.6V I:0.1186A P:25.23W PF:0.9639 Lamp Flux:1749.56x1 lm		
NAME: FF10-22W-840-40D Black	TYPE:Downlight	SERIAL No.:
SPEC.:4000K	DIM.: L290mm*W45mm*H60mm	
MFR.: NEKO LIGHTING AG		

REFLECTANCE										
Ceiling	0.8	0.8	0.8	0.7	0.7	0.7	0.5	0.5	0.5	0
Walls	0.7	0.5	0.3	0.7	0.5	0.3	0.7	0.5	0.3	0
Working plane	0.2	0.2	0.2	0.2	0.2	0.2	0.2	0.2	0.2	0
ROOM INDEX	UTILIZATION FACTORS(PERCENT) $k(RI) \times RCR = 5$									
k = 0.60	92	86	83	91	86	82	90	85	82	79
0.80	98	93	90	98	93	90	97	92	90	86
1.00	102	97	94	101	97	94	100	96	93	90
1.25	105	101	98	104	100	98	103	99	97	93
1.50	108	104	101	107	103	100	105	102	99	95
2.00	110	106	103	109	105	103	106	103	101	96
2.50	111	108	105	110	107	104	107	104	103	97
3.00	113	110	107	111	108	106	108	106	104	98
4.00	115	112	110	113	111	109	109	107	106	99
5.00	116	114	112	114	112	111	110	109	108	100
ROOM INDEX	UF(total)									Direct
According to DIN EN 13032-2 2004			Suspended				SHRNOM = 1.25			

C Range: 0 - 360DEG
 C Interval: 15.0DEG
 Test Speed: HIGH
 Temperature:25.3DEG
 Operators:Meng Yongjian
 Test Date:2017-06-11

γ Range: 0 - 90DEG
 γ Interval: 1.0DEG
 Test System:EVERFINE GO-2000B_V1 SYSTEM V2.0.288
 Humidity:52%
 Test Distance:5.850m [K=1.0000]
 Remarks:

ISOCANDELA DIAGRAM

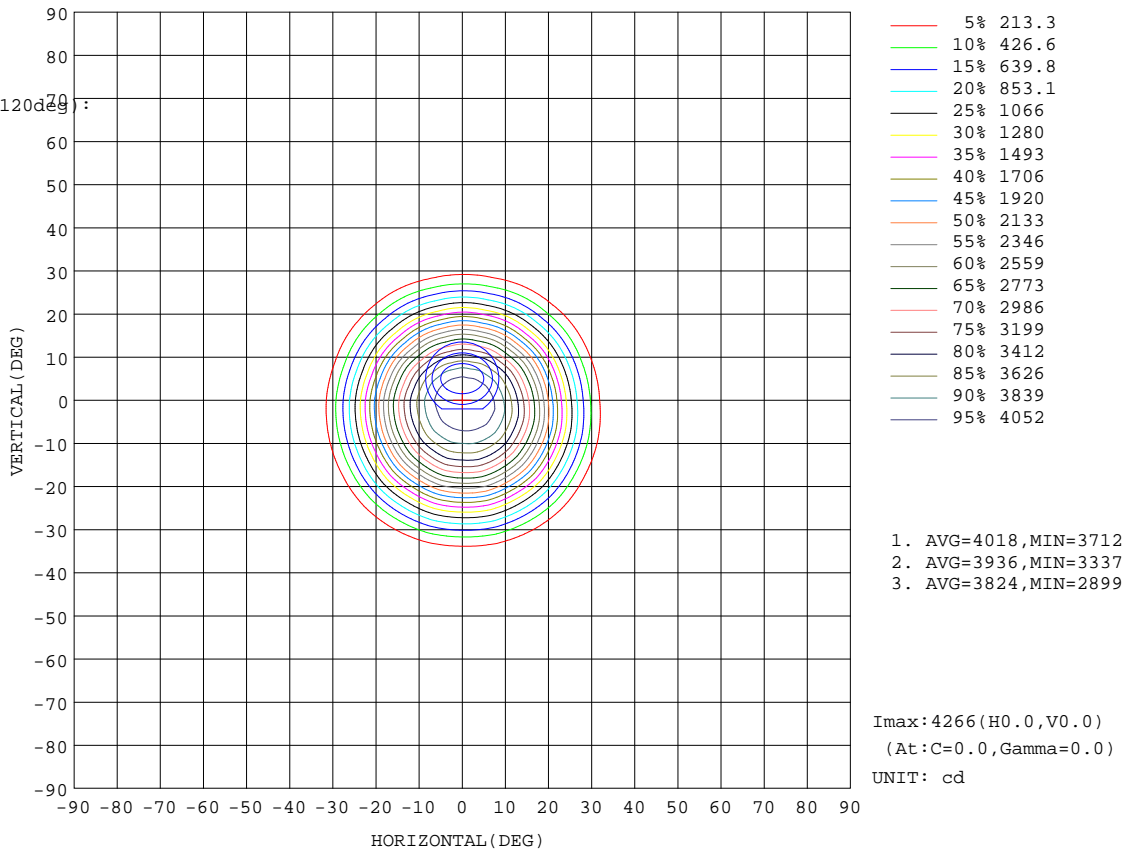
Test:U:220.6V I:0.1186A P:25.23W PF:0.9639 Lamp Flux:1749.56x1 lm		
NAME: FF10-22W-840-40D Black	TYPE:Downlight	SERIAL No.:
SPEC.:4000K	DIM.: L290mm*W45mm*H60mm	
MFR.: NEKO LIGHTING AG		

Conical surface Flux(90deg):

1748.2 lm
%lum = 99.9%
%lamp = 99.9%

Conical surface Flux(120deg):

1749 lm
%lum = 100.0%
%lamp = 100.0%



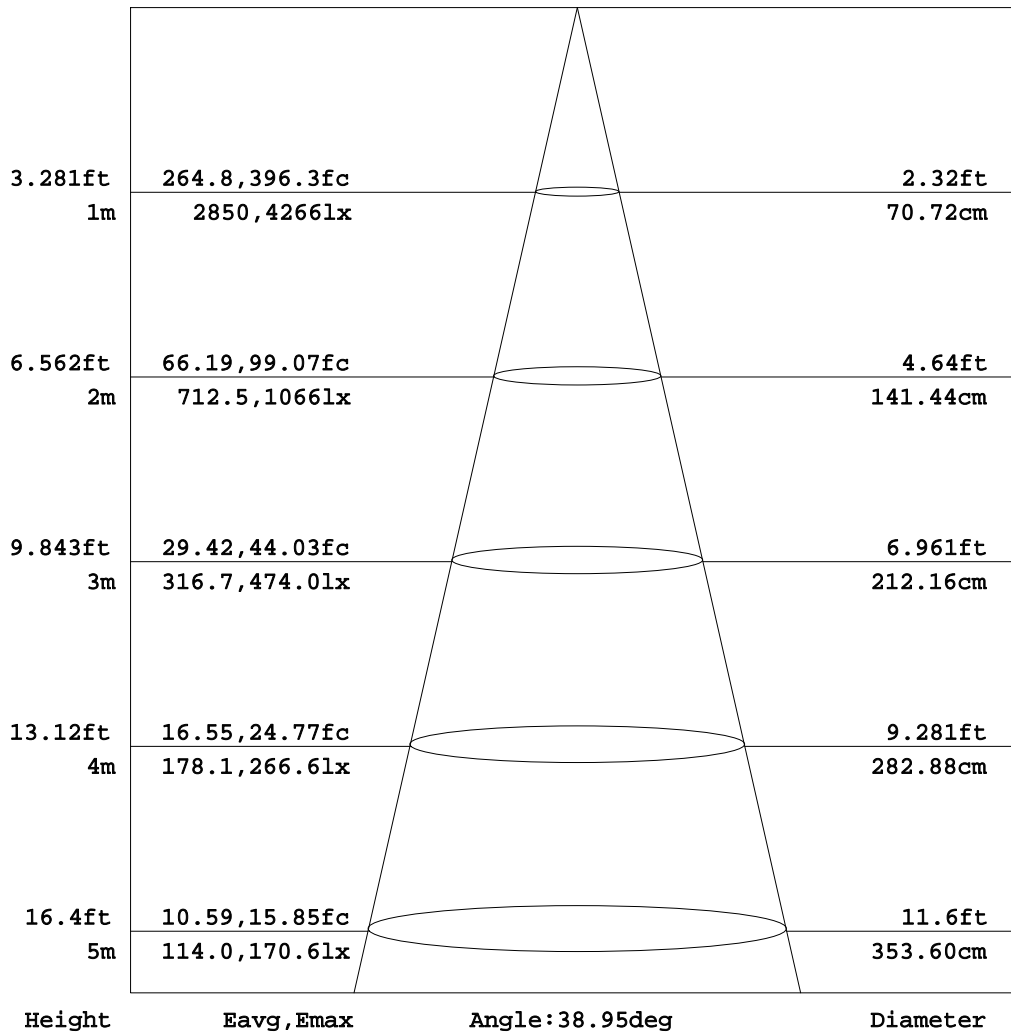
C Range: 0 - 360DEG
C Interval: 15.0DEG
Test Speed: HIGH
Temperature: 25.3DEG
Operators: Meng Yongjian
Test Date: 2017-06-11

γ Range: 0 - 90DEG
γ Interval: 1.0DEG
Test System: EVERFINE GO-2000B_V1 SYSTEM V2.0.288
Humidity: 52%
Test Distance: 5.850m [K=1.0000]
Remarks:

AAI Figure

Test:U:220.6V I:0.1186A P:25.23W PF:0.9639 Lamp Flux:1749.56x1 lm		
NAME: FF10-22W-840-40D Black	TYPE:Downlight	SERIAL No.:
SPEC.:4000K	DIM.: L290mm*W45mm*H60mm	
MFR.: NEKO LIGHTING AG		

Flux out:1186 lm



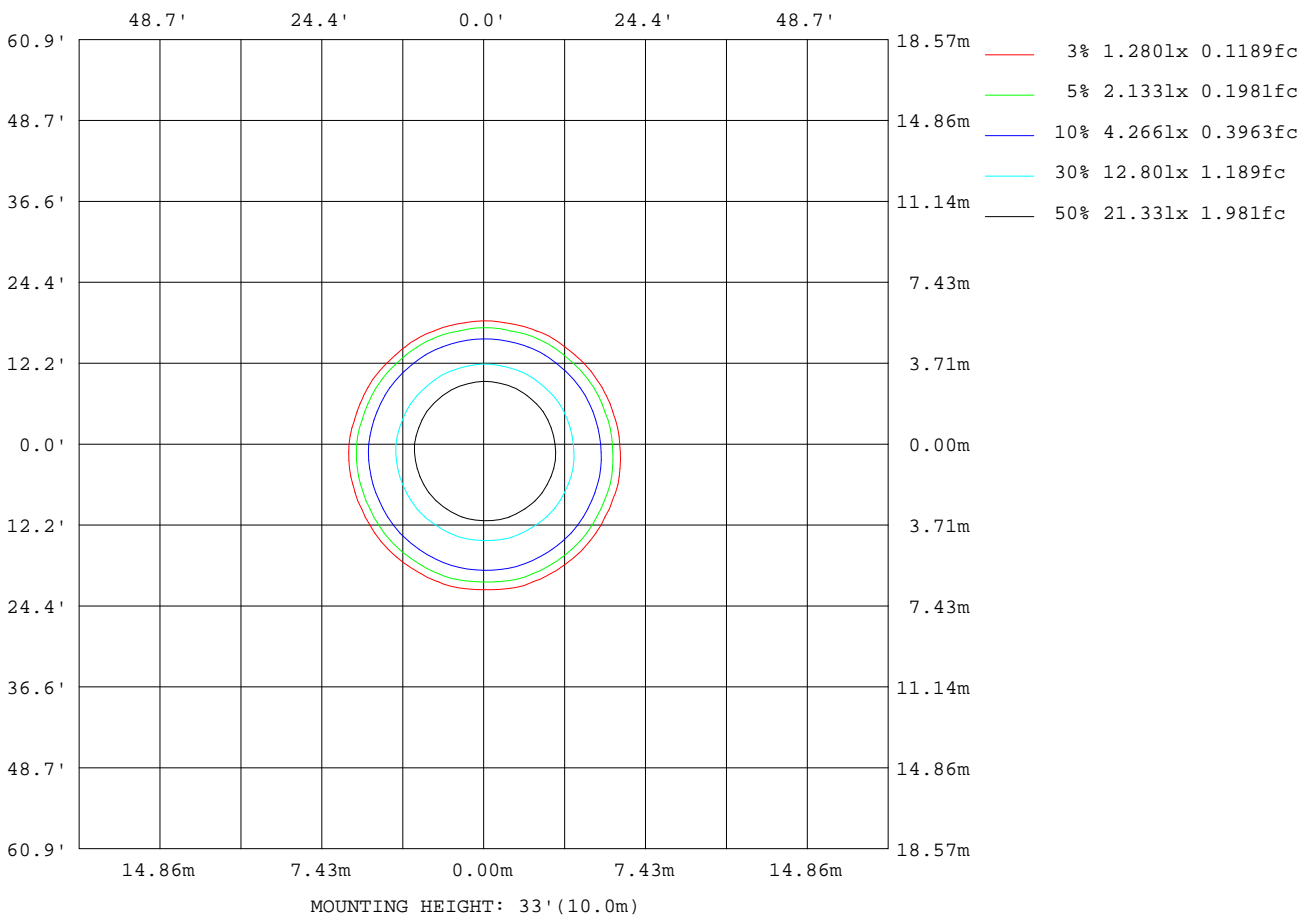
Note:The Curves indicate the illuminated area and the average illumination when the luminaire is at different distance.

C Range: 0 - 360DEG
C Interval: 15.0DEG
Test Speed: HIGH
Temperature:25.3DEG
Operators:Meng Yongjian
Test Date:2017-06-11

γ Range: 0 - 90DEG
γ Interval: 1.0DEG
Test System:EVERFINE GO-2000B_V1 SYSTEM V2.0.288
Humidity:52%
Test Distance:5.850m [K=1.0000]
Remarks:

ISOLUX DIAGRAM

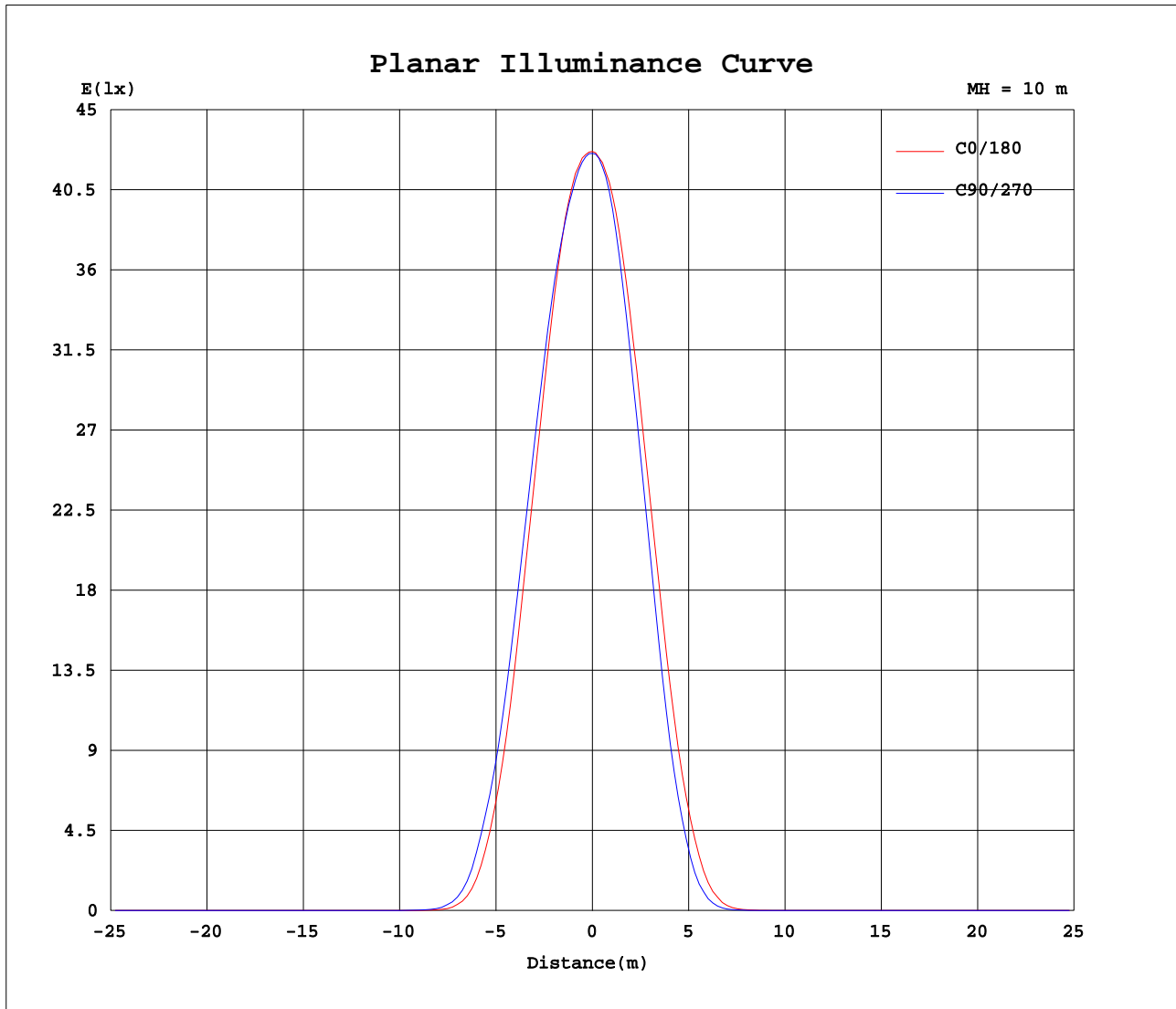
Test:U:220.6V I:0.1186A P:25.23W PF:0.9639 Lamp Flux:1749.56x1 lm		
NAME: FF10-22W-840-40D Black	TYPE:Downlight	SERIAL No.:
SPEC.:4000K	DIM.: L290mm*W45mm*H60mm	
MFR.: NEKO LIGHTING AG		



C Range: 0 - 360DEG
C Interval: 15.0DEG
Test Speed: HIGH
Temperature:25.3DEG
Operators:Meng Yongjian
Test Date:2017-06-11

γ Range: 0 - 90DEG
γ Interval: 1.0DEG
Test System:EVERFINE GO-2000B_V1 SYSTEM V2.0.288
Humidity:52%
Test Distance:5.850m [K=1.0000]
Remarks:

Planar Illuminance Curve



C Range: 0 - 360DEG
 C Interval: 15.0DEG
 Test Speed: HIGH
 Temperature: 25.3DEG
 Operators: Meng Yongjian
 Test Date: 2017-06-11

γ Range: 0 - 90DEG
 γ Interval: 1.0DEG
 Test System: EVERFINE GO-2000B_V1 SYSTEM V2.0.288
 Humidity: 52%
 Test Distance: 5.850m [K=1.0000]
 Remarks:

LUMINOUS DISTRIBUTION INTENSITY DATA

Test:U:220.6V I:0.1186A P:25.23W PF:0.9639 Lamp Flux:1749.56x1 lm		
NAME: FF10-22W-840-40D Black	TYPE:Downlight	SERIAL No.:
SPEC.:4000K	DIM.: L290mm*W45mm*H60mm	
MFR.: NEKO LIGHTING AG		

Table--1

UNIT: cd

C(DEG) γ (DEG)	0	15	30	45	60	75	90	105	120	135	150	165	180	195	210	225	240	255	270
0	4266	4265	4263	4261	4259	4258	4255	4248	4246	4248	4247	4246	4266	4265	4263	4261	4259	4258	4255
5	4190	4187	4187	4184	4171	4170	4152	4154	4135	4142	4127	4122	4141	4124	4117	4096	4094	4081	4089
10	3794	3857	3880	3901	3883	3873	3838	3841	3814	3800	3747	3716	3694	3625	3598	3532	3513	3477	3499
15	3055	3173	3220	3286	3296	3305	3254	3255	3186	3140	3052	2992	2934	2821	2760	2660	2636	2589	2621
20	2118	2264	2340	2422	2435	2465	2424	2404	2317	2259	2149	2065	1988	1847	1761	1641	1606	1547	1580
25	1115	1247	1335	1439	1449	1495	1454	1440	1350	1290	1182	1103	1030	910	839	755	724	680	690
30	391	480	546	622	650	684	661	648	588	531	450	397	345	267	226	188	173	151	164
35	64.2	82.9	99.6	132	138	157	138	144	116	101	78.7	64.8	51.3	36.6	29.4	22.0	18.8	15.8	16.3
40	6.80	9.06	11.1	14.4	16.0	16.9	15.8	15.9	13.8	12.1	9.22	7.26	5.65	4.30	3.52	2.31	1.98	1.85	1.92
45	1.15	1.28	1.42	1.62	1.68	1.77	1.73	1.70	1.53	1.43	1.25	1.16	1.03	1.02	0.93	0.85	0.80	0.80	0.80
50	0.72	0.75	0.80	0.81	0.83	0.83	0.84	0.83	0.82	0.77	0.77	0.72	0.66	0.70	0.62	0.59	0.55	0.56	0.54
55	0.51	0.53	0.56	0.56	0.58	0.57	0.59	0.58	0.58	0.54	0.54	0.51	0.46	0.51	0.45	0.44	0.40	0.42	0.40
60	0.38	0.39	0.41	0.40	0.44	0.42	0.45	0.43	0.43	0.39	0.40	0.38	0.35	0.38	0.33	0.34	0.31	0.33	0.31
65	0.29	0.29	0.32	0.30	0.33	0.32	0.35	0.33	0.33	0.30	0.32	0.29	0.26	0.29	0.26	0.26	0.24	0.26	0.24
70	0.23	0.22	0.25	0.23	0.26	0.25	0.28	0.25	0.26	0.23	0.25	0.22	0.20	0.23	0.20	0.21	0.19	0.21	0.19
75	0.18	0.17	0.19	0.17	0.21	0.20	0.22	0.20	0.21	0.18	0.20	0.17	0.16	0.18	0.15	0.16	0.14	0.16	0.14
80	0.14	0.13	0.15	0.13	0.17	0.15	0.18	0.15	0.17	0.14	0.15	0.12	0.11	0.13	0.10	0.12	0.10	0.12	0.10
85	0.11	0.09	0.12	0.10	0.13	0.11	0.14	0.11	0.13	0.10	0.12	0.09	0.07	0.09	0.06	0.08	0.06	0.08	0.06
90	0.09	0.08	0.10	0.10	0.10	0.10	0.10	0.10	0.10	0.10	0.10	0.09	0.05	0.05	0.05	0.06	0.06	0.06	0.06

C Range: 0 - 360DEG γ Range: 0 - 90DEG
C Interval: 15.0DEG γ Interval: 1.0DEG
Test Speed: HIGH Test System:EVERFINE GO-2000B_V1 SYSTEM V2.0.288
Temperature:25.3DEG Humidity:52%
Operators:Meng Yongjian Test Distance:5.850m [K=1.0000]
Test Date:2017-06-11 Remarks:

LUMINOUS DISTRIBUTION INTENSITY DATA

Test:U:220.6V I:0.1186A P:25.23W PF:0.9639 Lamp Flux:1749.56x1 lm		
NAME: FF10-22W-840-40D Black	TYPE:Downlight	SERIAL No.:
SPEC.:4000K	DIM.: L290mm*W45mm*H60mm	
MFR.: NEKO LIGHTING AG		

Table--2

UNIT: cd

C(DEC) γ (DEC)	285	300	315	330	345														
0	4248	4246	4248	4247	4246														
5	4079	4105	4113	4141	4154														
10	3496	3563	3601	3684	3724														
15	2623	2699	2748	2863	2943														
20	1586	1676	1745	1889	1995														
25	701	766	819	923	1007														
30	159	193	218	269	319														
35	17.0	21.5	26.4	37.0	50.4														
40	1.99	2.37	3.14	4.37	5.47														
45	0.86	0.90	1.00	1.13	1.19														
50	0.59	0.60	0.67	0.73	0.78														
55	0.44	0.43	0.48	0.51	0.56														
60	0.33	0.32	0.37	0.37	0.41														
65	0.26	0.25	0.29	0.28	0.31														
70	0.21	0.20	0.23	0.21	0.23														
75	0.17	0.15	0.18	0.16	0.18														
80	0.12	0.10	0.13	0.11	0.14														
85	0.09	0.07	0.09	0.07	0.09														
90	0.06	0.06	0.06	0.06	0.06														

C Range: 0 - 360DEG
C Interval: 15.0DEG
Test Speed: HIGH
Temperature:25.3DEG
Operators:Meng Yongjian
Test Date:2017-06-11

γ Range: 0 - 90DEG
γ Interval: 1.0DEG
Test System:EVERFINE GO-2000B_V1 SYSTEM V2.0.288
Humidity:52%
Test Distance:5.850m [K=1.0000]
Remarks:

Photometric Data Table [cd]

G/C	0.0	15.0	30.0	45.0	60.0	75.0	90.0	105.0	120.0	135.0
0.0	4266	4265	4263	4261	4259	4258	4255	4248	4246	4248
3.0	4246	4249	4239	4244	4236	4230	4223	4217	4210	4212
6.0	4135	4148	4149	4151	4136	4118	4102	4101	4089	4092
9.0	3905	3952	3964	3977	3963	3948	3920	3923	3899	3896
12.0	3538	3617	3656	3695	3690	3681	3647	3645	3601	3573
15.0	3055	3173	3220	3286	3296	3305	3254	3255	3186	3140
18.0	2516	2648	2713	2788	2803	2828	2780	2773	2686	2635
21.0	1908	2061	2144	2231	2247	2283	2236	2215	2124	2069
24.0	1296	1444	1529	1628	1643	1685	1645	1623	1533	1481
27.0	793.0	912.3	986.7	1078	1101	1136	1105	1090	1017	964.9
30.0	391.1	480.3	546.3	621.7	650.5	684.2	661.4	647.5	588.0	531.4
33.0	140.6	184.8	212.6	259.3	284.2	302.3	281.5	279.7	242.8	211.9
36.0	36.06	52.36	70.58	82.90	92.55	100.1	92.48	90.85	75.91	66.19
39.0	9.658	12.98	16.64	21.71	24.14	25.67	24.01	23.58	20.33	17.97
42.0	2.775	4.110	4.861	6.677	7.514	8.157	7.666	7.715	6.478	5.217
45.0	1.150	1.282	1.415	1.624	1.677	1.770	1.726	1.704	1.533	1.434
48.0	0.8448	0.8892	0.9521	0.9744	0.9851	0.9984	1.007	0.9918	0.9675	0.9220
51.0	0.6697	0.6970	0.7441	0.7451	0.7681	0.7626	0.7792	0.7625	0.7616	0.7188
54.0	0.5427	0.5638	0.5996	0.5966	0.6214	0.6141	0.6324	0.6184	0.6171	0.5769
57.0	0.4442	0.4655	0.4923	0.4851	0.5163	0.5027	0.5251	0.5070	0.5098	0.4720
60.0	0.3763	0.3890	0.4113	0.3977	0.4375	0.4239	0.4463	0.4261	0.4288	0.3912
63.0	0.3216	0.3234	0.3500	0.3343	0.3720	0.3562	0.3785	0.3606	0.3697	0.3300
66.0	0.2756	0.2754	0.2997	0.2798	0.3172	0.3059	0.3282	0.3060	0.3150	0.2820
69.0	0.2363	0.2338	0.2581	0.2404	0.2734	0.2601	0.2844	0.2644	0.2756	0.2448
72.0	0.2057	0.1989	0.2253	0.2033	0.2384	0.2229	0.2537	0.2295	0.2364	0.2120
75.0	0.1794	0.1683	0.1925	0.1749	0.2078	0.1967	0.2209	0.1967	0.2122	0.1792
78.0	0.1531	0.1420	0.1663	0.1530	0.1794	0.1705	0.1947	0.1705	0.1859	0.1552
81.0	0.1291	0.1137	0.1444	0.1311	0.1554	0.1399	0.1684	0.1421	0.1619	0.1311
84.0	0.1116	0.0961	0.1225	0.1049	0.1356	0.1180	0.1465	0.1245	0.1379	0.1114
87.0	0.0963	0.0831	0.1072	0.0962	0.1160	0.0962	0.1182	0.1006	0.1160	0.0962
90.0	0.0853	0.0831	0.0962	0.0962	0.0962	0.0962	0.1028	0.1006	0.0984	0.0962
G/C	150.0	165.0	180.0	195.0	210.0	225.0	240.0	255.0	270.0	285.0
0.0	4247	4266	4265	4263	4261	4259	4258	4255	4248	4248
3.0	4204	4204	4220	4209	4206	4199	4198	4191	4195	4185
6.0	4074	4070	4082	4062	4046	4023	4011	3993	4006	3998
9.0	3853	3824	3812	3756	3727	3676	3664	3630	3644	3645
12.0	3502	3462	3419	3331	3286	3207	3184	3141	3162	3165
15.0	3052	2992	2934	2821	2760	2660	2636	2589	2621	2623
18.0	2528	2453	2387	2258	2177	2070	2032	1982	2014	2018
21.0	1949	1866	1785	1640	1556	1437	1408	1344	1379	1379
24.0	1361	1280	1204	1072	1000	904.9	873.1	825.1	839.6	849.7
27.0	862.7	793.9	724.9	621.9	553.9	483.2	457.7	415.5	421.7	435.0
30.0	450.4	396.7	345.5	266.5	226.4	187.7	172.6	151.1	164.1	159.3
33.0	171.9	155.0	129.0	88.45	72.53	60.93	48.76	41.99	44.25	49.78
36.0	55.39	40.96	32.44	22.93	18.43	14.13	12.39	10.49	10.68	11.04
39.0	13.67	10.99	8.885	6.526	5.324	4.102	3.482	2.835	3.110	3.244
42.0	3.872	2.976	2.137	1.744	1.501	1.228	1.155	1.113	1.144	1.201
45.0	1.254	1.158	1.033	1.024	0.9283	0.8512	0.8017	0.8009	0.8017	0.8599
48.0	0.8952	0.8412	0.7646	0.7985	0.7231	0.6760	0.6270	0.6388	0.6292	0.6782
51.0	0.7091	0.6665	0.6095	0.6498	0.5855	0.5535	0.5112	0.5251	0.5047	0.5513
54.0	0.5733	0.5442	0.4938	0.5403	0.4764	0.4594	0.4261	0.4419	0.4195	0.4572
57.0	0.4748	0.4524	0.4086	0.4550	0.3977	0.3916	0.3606	0.3784	0.3540	0.3872
60.0	0.3982	0.3781	0.3452	0.3828	0.3343	0.3368	0.3059	0.3281	0.3059	0.3325
63.0	0.3456	0.3169	0.2884	0.3281	0.2840	0.2931	0.2666	0.2887	0.2644	0.2931
66.0	0.2997	0.2710	0.2426	0.2778	0.2404	0.2559	0.2295	0.2516	0.2295	0.2537
69.0	0.2625	0.2295	0.2098	0.2450	0.2033	0.2209	0.2010	0.2209	0.1988	0.2209
72.0	0.2297	0.2010	0.1835	0.2100	0.1727	0.1925	0.1683	0.1925	0.1683	0.1925
75.0	0.1969	0.1683	0.1552	0.1794	0.1464	0.1641	0.1399	0.1641	0.1442	0.1663
78.0	0.1663	0.1399	0.1332	0.1509	0.1202	0.1335	0.1158	0.1400	0.1136	0.1400
81.0	0.1444	0.1136	0.1005	0.1203	0.0961	0.1138	0.0939	0.1159	0.0962	0.1159
84.0	0.1247	0.0983	0.0786	0.0963	0.0677	0.0897	0.0677	0.0897	0.0699	0.0941
87.0	0.1050	0.0896	0.0546	0.0723	0.0547	0.0700	0.0569	0.0657	0.0590	0.0700
90.0	0.0984	0.0896	0.0503	0.0547	0.0547	0.0590	0.0590	0.0590	0.0590	0.0612
G/C	300.0	315.0	330.0	345.0						
0.0	4246	4248	4247	4246						
3.0	4196	4203	4212	4223						
6.0	4032	4047	4087	4102						
9.0	3707	3734	3806	3846						
12.0	3241	3284	3381	3447						
15.0	2699	2748	2863	2943						
18.0	2105	2167	2305	2399						
21.0	1474	1534	1679	1782						

C Range: 0 - 360DEG

C Interval: 15.0DEG

Test Speed: HIGH

Temperature: 25.3DEG

Operators: Meng Yongjian

Test Date: 2017-06-11

γ Range: 0 - 90DEG

γ Interval: 1.0DEG

Test System: EVERFINE GO-2000B_V1 SYSTEM V2.0.288

Humidity: 52%

Test Distance: 5.850m [K=1.0000]

Remarks:

Photometric Data Table [cd]

24.0	920.9	976.8	1092	1180
27.0	494.6	542.9	627.0	700.9
30.0	192.5	217.9	269.4	319.4
33.0	56.39	67.46	89.35	109.3
36.0	13.81	16.78	22.60	28.17
39.0	4.197	5.065	6.826	8.149
42.0	1.325	1.520	1.902	2.233
45.0	0.8978	1.002	1.131	1.193
48.0	0.6947	0.7701	0.8563	0.9058
51.0	0.5571	0.6214	0.6750	0.7264
54.0	0.4567	0.5097	0.5441	0.5951
57.0	0.3802	0.4309	0.4479	0.4944
60.0	0.3234	0.3674	0.3715	0.4091
63.0	0.2753	0.3150	0.3146	0.3435
66.0	0.2338	0.2756	0.2622	0.2931
69.0	0.2011	0.2384	0.2207	0.2472
72.0	0.1770	0.2078	0.1857	0.2100
75.0	0.1464	0.1772	0.1552	0.1815
78.0	0.1202	0.1488	0.1332	0.1509
81.0	0.0939	0.1225	0.1005	0.1247
84.0	0.0721	0.0963	0.0764	0.0985
87.0	0.0590	0.0766	0.0634	0.0788
90.0	0.0590	0.0634	0.0634	0.0612

C Range: 0 - 360DEG
 C Interval: 15.0DEG
 Test Speed: HIGH
 Temperature: 25.3DEG
 Operators: Meng Yongjian
 Test Date: 2017-06-11

γ Range: 0 - 90DEG
 γ Interval: 1.0DEG
 Test System: EVERFINE GO-2000B_V1 SYSTEM V2.0.288
 Humidity: 52%
 Test Distance: 5.850m [K=1.0000]
 Remarks: