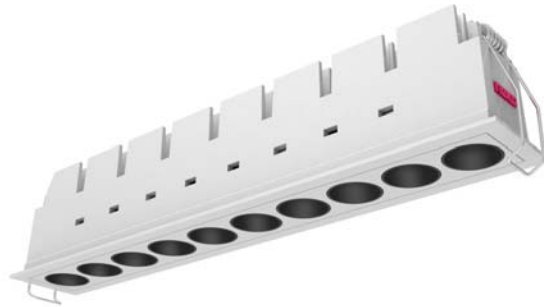


## FF10-22W-840-24D Black



Light Output Ratio:	100.0%	
Luminaire Power:	25.14 W	
SHR Nominal:	0.00	Calculated using the TM5
SHR Maximum:	1.00	fine grid method.

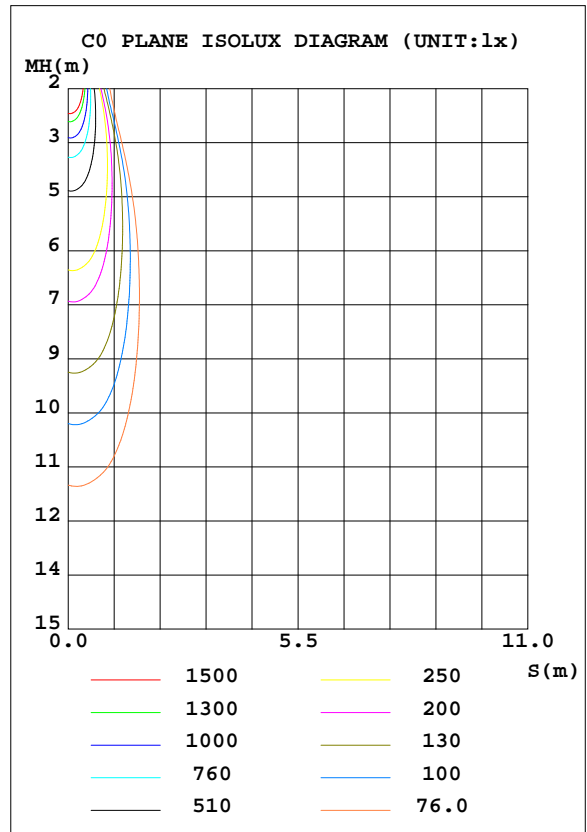
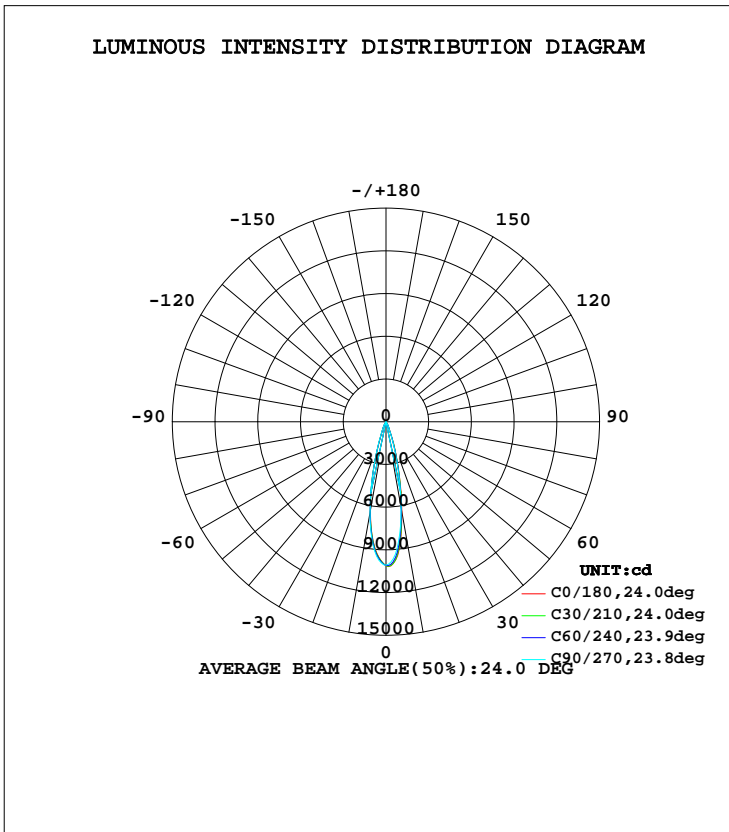
C Range: 0 - 360DEG  
C Interval: 15.0DEG  
Test Speed: HIGH  
Temperature: 25.2DEG  
Operators: Cao Chengpei  
Test Date: 2016-06-23

$\gamma$  Range: 0 - 90DEG  
 $\gamma$  Interval: 1.0DEG  
Test System: EVERFINE GO-2000B\_V1 SYSTEM V2.0.288  
Humidity: 52%  
Test Distance: 5.850m [K=1.0000]  
Remarks:

LUMINAIRE PHOTOMETRIC TEST REPORT

Test:U:220.0V I:0.1185A P:25.14W PF:0.9644 Lamp Flux:1999.4lx1 lm		
NAME: FF10-22W-840-24D Black	TYPE:Downlight	SERIAL No.:
SPEC.:4000K	DIM.: L290mm*W45mm*H60mm	
MFR.: NEKO LIGHTING AG		

DATA OF LAMP		PHOTOMETRIC DATA Eff: 79.52 lm/W			
MODEL	CREE-4000K	Imax(cd)	10173	S/MH(C0/180)	0.41
NOMINAL POWER(W)	24	LOR(%)	100.0	S/MH(C90/270)	0.41
RATED VOLTAGE(V)	220	TOTAL FLUX(lm)	1999.4	η UP, DN(C0-180)	0.0, 49.2
NOMINAL FLUX(lm)	1999.41	CIE CLASS	DIRECT	η UP, DN(C180-360)	0.0, 50.8
LAMPS INSIDE	1	η up(%)	0.0	CIBSE SHR NOM	0.00
TEST VOLTAGE(V)	220	η down(%)	100.0	CIBSE SHR MAX	1.00



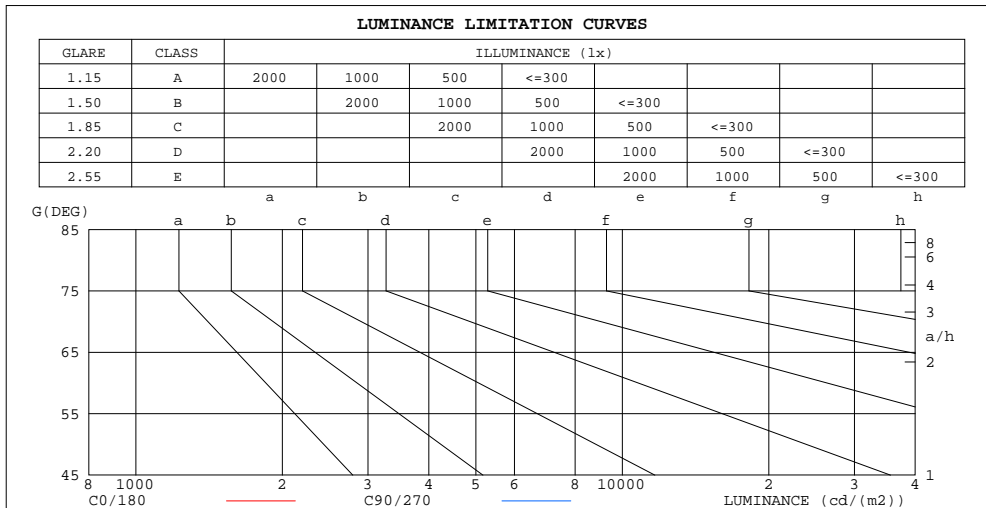
C Range: 0 - 360DEG  
 C Interval: 15.0DEG  
 Test Speed: HIGH  
 Temperature:25.2DEG  
 Operators:Cao Chengpei  
 Test Date:2016-06-23

γ Range: 0 - 90DEG  
 γ Interval: 1.0DEG  
 Test System:EVERFINE GO-2000B\_V1 SYSTEM V2.0.288  
 Humidity:52%  
 Test Distance:5.850m [K=1.0000]  
 Remarks:

ZONAL FLUX DIAGRAM  
AND LUMINANCE LIMITATION CURVES

ZONAL FLUX DIAGRAM:

$\gamma$	C0	C45	C90	C135	C180	C225	C270	C315	$\gamma$	$\Phi$ zone	$\Phi$ total	$\Phi$ lum,lamp
10	642.0	635.0	609.5	614.3	635.3	632.8	647.2	652.6	0- 10	778.4	778.4	38.9,38.9
20	136.4	137.1	121.1	117.5	113.2	115.6	126.1	142.7	10- 20	906.6	1685	84.3,84.3
30	26.61	26.87	26.42	27.20	27.69	28.47	28.56	29.05	20- 30	260.4	1946	97.3,97.3
40	0.9397	0.9236	0.7965	0.7544	0.6499	0.7634	0.9465	1.178	30- 40	52.09	1998	99.9,99.9
50	0.0418	0.0385	0.0388	0.0392	0.0398	0.0411	0.0372	0.0394	40- 50	1.150	1999	100,100
60	0.0243	0.0215	0.0228	0.0209	0.0213	0.0224	0.0200	0.0226	50- 60	0.2590	1999	100,100
70	0.0168	0.0141	0.0160	0.0138	0.0138	0.0147	0.0132	0.0147	60- 70	0.1761	1999	100,100
80	0.0128	0.0096	0.0115	0.0096	0.0100	0.0102	0.0083	0.0107	70- 80	0.1299	1999	100,100
90	0.0094	0.0087	0.0087	0.0085	0.0083	0.0070	0.0068	0.0066	80- 90	0.0955	1999	100,100
100									90-100			
110									100-110			
120									110-120			
130									120-130			
140									130-140			
150									140-150			
160									150-160			
170									160-170			
180									170-180			
DEG	LUMINOUS INTENSITY: $\times 10\text{cd}$									UNIT: lm		



LUMINANCE cd/(m2)		
G(DEG)	C0/180	C90/270
85	94	88
80	56	51
75	44	40
70	38	36
65	37	34
60	37	35
55	41	38
50	50	46
45	72	69

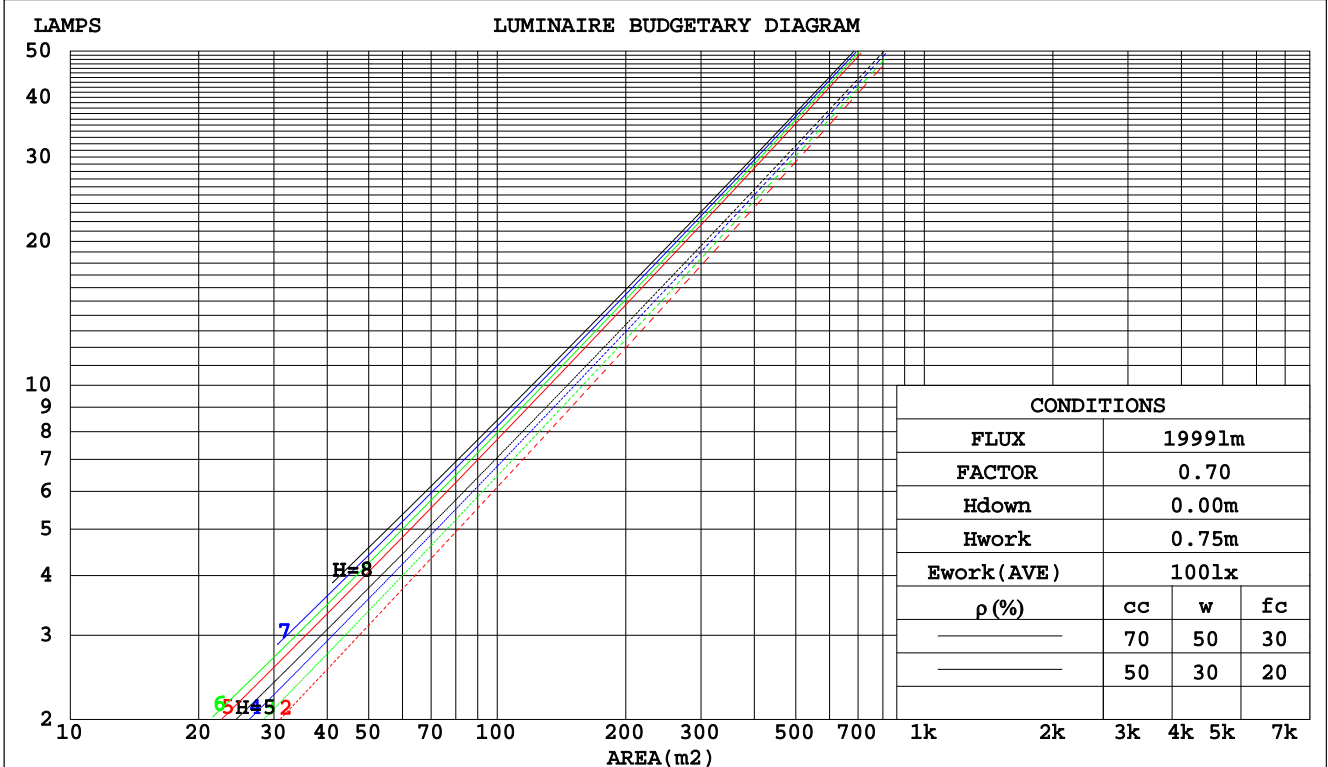
C Range: 0 - 360DEG  
 C Interval: 15.0DEG  
 Test Speed: HIGH  
 Temperature: 25.2DEG  
 Operators: Cao Chengpei  
 Test Date: 2016-06-23

$\gamma$  Range: 0 - 90DEG  
 $\gamma$  Interval: 1.0DEG  
 Test System: EVERFINE GO-2000B\_V1 SYSTEM V2.0.288  
 Humidity: 52%  
 Test Distance: 5.850m [K=1.0000]  
 Remarks:

CU AND LUMINAIRE BUDGETARY ESTIMATE DIAGRAM

Test:U:220.0V I:0.1185A P:25.14W PF:0.9644 Lamp Flux:1999.4lx1 lm		
NAME: FF10-22W-840-24D Black	TYPE:Downlight	SERIAL No.:
SPEC.:4000K	DIM.: L290mm*W45mm*H60mm	
MFR.: NEKO LIGHTING AG		

pcc	80%			70%			50%			30%			10%			0
	50%	30%	10%	50%	30%	10%	50%	30%	10%	50%	30%	10%	50%	30%	10%	0
pw																
pfc																
RCR	RCR:Room Cavity Ratio															
	Coefficients of Utilization(CU)															
0.0	1.19	1.19	1.19	1.16	1.16	1.16	1.11	1.11	1.11	1.06	1.06	1.06	1.02	1.02	1.02	1.00
1.0	1.13	1.11	1.10	1.11	1.09	1.08	1.07	1.06	1.05	1.03	1.02	1.02	1.00	.99	.99	.97
2.0	1.08	1.05	1.03	1.07	1.04	1.02	1.03	1.01	.90	1.01	.99	.98	.98	.97	.96	.94
3.0	1.04	1.01	.98	1.03	.90	.97	1.00	.98	.96	.98	.96	.94	.96	.94	.93	.91
4.0	1.00	.96	.94	.99	.96	.93	.97	.94	.92	.95	.93	.91	.94	.92	.90	.89
5.0	.97	.93	.90	.96	.92	.90	.94	.91	.89	.93	.90	.88	.92	.89	.88	.86
6.0	.94	.90	.87	.93	.89	.87	.92	.89	.86	.91	.88	.86	.89	.87	.85	.84
7.0	.91	.87	.84	.90	.87	.84	.89	.86	.84	.88	.86	.83	.87	.85	.83	.82
8.0	.88	.85	.82	.88	.84	.82	.87	.84	.81	.86	.83	.81	.85	.83	.81	.80
9.0	.86	.82	.80	.86	.82	.80	.85	.82	.79	.84	.81	.79	.84	.81	.79	.78
10.0	.84	.80	.78	.84	.80	.78	.83	.80	.77	.82	.79	.77	.82	.79	.77	.76



C Range: 0 - 360DEG  
 C Interval: 15.0DEG  
 Test Speed: HIGH  
 Temperature: 25.2DEG  
 Operators: Cao Chengpei  
 Test Date: 2016-06-23

γ Range: 0 - 90DEG  
 γ Interval: 1.0DEG  
 Test System: EVERFINE GO-2000B\_V1 SYSTEM V2.0.288  
 Humidity: 52%  
 Test Distance: 5.850m [K=1.0000]  
 Remarks:

WEC AND CCEC

Test:U:220.0V I:0.1185A P:25.14W PF:0.9644 Lamp Flux:1999.4lx1 lm		
NAME: FF10-22W-840-24D Black	TYPE:Downlight	SERIAL No.:
SPEC.:4000K	DIM.: L290mm*W45mm*H60mm	
MFR.: NEKO LIGHTING AG		

ρcc	80%			70%			50%			30%			10%			0
ρw	50%	30%	10%	50%	30%	10%	50%	30%	10%	50%	30%	10%	50%	30%	10%	0
ρfc	20%			20%			20%			20%			20%			0
RCR	RCR:Room Cavity Ratio						Wall Exitance Coefficients(WEC)									
0.0																
1.0	.131	.075	.024	.125	.071	.023	.112	.064	.021	.101	.058	.019	.090	.052	.017	
2.0	.121	.066	.020	.116	.064	.020	.105	.059	.018	.096	.054	.017	.087	.049	.016	
3.0	.112	.060	.018	.108	.058	.017	.099	.054	.016	.092	.050	.015	.084	.047	.014	
4.0	.105	.055	.016	.101	.053	.016	.094	.050	.015	.088	.047	.014	.081	.044	.013	
5.0	.099	.050	.015	.096	.049	.014	.090	.047	.014	.084	.044	.013	.079	.042	.013	
6.0	.093	.047	.013	.091	.046	.013	.085	.044	.013	.081	.042	.012	.076	.040	.012	
7.0	.089	.044	.012	.086	.043	.012	.082	.041	.012	.078	.040	.012	.074	.038	.011	
8.0	.084	.041	.012	.082	.041	.011	.078	.039	.011	.075	.038	.011	.071	.037	.011	
9.0	.081	.039	.011	.079	.038	.011	.075	.037	.011	.072	.036	.010	.069	.035	.010	
10.0	.077	.037	.010	.076	.037	.010	.073	.036	.010	.070	.035	.010	.067	.034	.010	

ρcc	80%			70%			50%			30%			10%			0
ρw	50%	30%	10%	50%	30%	10%	50%	30%	10%	50%	30%	10%	50%	30%	10%	0
ρfc	20%			20%			20%			20%			20%			0
RCR	RCR:Room Cavity Ratio						Ceiling Cavity Exitance Coefficients(CCEC)									
0.0	.190	.190	.190	.163	.163	.163	.111	.111	.111	.064	.064	.064	.020	.020	.020	
1.0	.168	.158	.148	.144	.135	.128	.098	.093	.088	.057	.054	.051	.018	.017	.017	
2.0	.149	.133	.119	.128	.114	.103	.088	.079	.072	.051	.046	.042	.016	.015	.014	
3.0	.134	.113	.097	.115	.098	.084	.079	.068	.059	.046	.040	.035	.015	.013	.011	
4.0	.121	.098	.080	.104	.084	.069	.072	.059	.049	.041	.034	.029	.013	.011	.009	
5.0	.111	.085	.067	.095	.074	.058	.065	.052	.041	.038	.030	.024	.012	.010	.008	
6.0	.102	.075	.056	.087	.065	.049	.060	.046	.035	.035	.027	.021	.011	.009	.007	
7.0	.094	.067	.048	.081	.058	.042	.056	.041	.030	.032	.024	.018	.010	.008	.006	
8.0	.087	.060	.042	.075	.052	.036	.052	.037	.026	.030	.022	.015	.010	.007	.005	
9.0	.082	.054	.036	.070	.047	.032	.049	.033	.022	.028	.020	.013	.009	.006	.004	
10.0	.077	.050	.032	.066	.043	.028	.046	.030	.020	.027	.018	.012	.009	.006	.004	

C Range: 0 - 360DEG  
 C Interval: 15.0DEG  
 Test Speed: HIGH  
 Temperature:25.2DEG  
 Operators:Cao Chengpei  
 Test Date:2016-06-23

γ Range: 0 - 90DEG  
 γ Interval: 1.0DEG  
 Test System:EVERFINE GO-2000B\_V1 SYSTEM V2.0.288  
 Humidity:52%  
 Test Distance:5.850m [K=1.0000]  
 Remarks:

UGR(Unified Glare Rating) Table

Test:U:220.0V I:0.1185A P:25.14W PF:0.9644 Lamp Flux:1999.4lx1 lm		
NAME: FF10-22W-840-24D Black	TYPE:Downlight	SERIAL No.:
SPEC.:4000K	DIM.: L290mm*W45mm*H60mm	
MFR.: NEKO LIGHTING AG		

ceiling/cavity	0.7	0.7	0.5	0.5	0.3	0.7	0.7	0.5	0.5	0.3
walls	0.5	0.3	0.5	0.3	0.3	0.5	0.3	0.5	0.3	0.3
working plane	0.2	0.2	0.2	0.2	0.2	0.2	0.2	0.2	0.2	0.2
Room dimensions	Viewed crosswise					Viewed endwise				
x = 2H y = 2H	3.5	4.1	3.7	4.2	4.4	3.0	3.6	3.2	3.8	3.9
3H	3.3	3.9	3.5	4.1	4.2	2.9	3.4	3.1	3.6	3.8
4H	3.2	3.8	3.5	4.0	4.2	2.8	3.3	3.1	3.5	3.8
6H	3.1	3.7	3.4	3.9	4.1	2.7	3.2	3.0	3.5	3.7
8H	3.1	3.6	3.4	3.8	4.1	2.7	3.2	3.0	3.4	3.7
12H	3.1	3.5	3.4	3.8	4.1	2.6	3.1	2.9	3.4	3.6
4H 2H	3.2	3.8	3.5	4.0	4.2	2.8	3.3	3.1	3.5	3.8
3H	3.1	3.5	3.4	3.8	4.1	2.6	3.1	2.9	3.4	3.6
4H	3.0	3.4	3.3	3.7	4.0	2.5	3.0	2.9	3.3	3.6
6H	2.9	3.3	3.2	3.6	3.9	2.4	2.8	2.8	3.1	3.5
8H	2.8	3.2	3.2	3.5	3.9	2.4	2.7	2.8	3.1	3.4
12H	2.8	3.1	3.2	3.5	3.8	2.3	2.7	2.7	3.0	3.4
8H 4H	2.8	3.2	3.2	3.5	3.9	2.4	2.7	2.8	3.1	3.4
6H	2.7	3.0	3.1	3.4	3.8	2.3	2.6	2.7	3.0	3.4
8H	2.6	2.9	3.1	3.3	3.8	2.2	2.5	2.6	2.9	3.3
12H	2.6	2.8	3.0	3.2	3.7	2.1	2.4	2.6	2.8	3.3
12H 4H	2.7	3.1	3.2	3.5	3.8	2.3	2.7	2.7	3.0	3.4
6H	2.6	2.9	3.1	3.3	3.8	2.2	2.5	2.6	2.9	3.3
8H	2.6	2.8	3.0	3.2	3.7	2.1	2.4	2.6	2.8	3.3
Variations with the observer position at spacings:										
S = 1.0H	+ 3.6 / -11.9					+ 3.7 / -11.1				
1.5H	+ 6.3 / -11.7					+ 6.5 / -10.9				
2.0H	+ 0.7 / - 0.5					+ 0.7 / - 0.3				

CIE Pub.117 Corrected 1999 lm Total Lamp Luminous Flux.(8log(F/F0) = 2.4)

C Range: 0 - 360DEG  
 C Interval: 15.0DEG  
 Test Speed: HIGH  
 Temperature:25.2DEG  
 Operators:Cao Chengpei  
 Test Date:2016-06-23

γ Range: 0 - 90DEG  
 γ Interval: 1.0DEG  
 Test System:EVERFINE GO-2000B\_V1 SYSTEM V2.0.288  
 Humidity:52%  
 Test Distance:5.850m [K=1.0000]  
 Remarks:

UTILIZATION FACTORS TABLE

Test:U:220.0V I:0.1185A P:25.14W PF:0.9644 Lamp Flux:1999.4lx1 lm		
NAME: FF10-22W-840-24D Black	TYPE:Downlight	SERIAL No.:
SPEC.:4000K	DIM.: L290mm*W45mm*H60mm	
MFR.: NEKO LIGHTING AG		

REFLECTANCE										
Ceiling	0.8	0.8	0.8	0.7	0.7	0.7	0.5	0.5	0.5	0
Walls	0.7	0.5	0.3	0.7	0.5	0.3	0.7	0.5	0.3	0
Working plane	0.2	0.2	0.2	0.2	0.2	0.2	0.2	0.2	0.2	0
ROOM INDEX	UTILIZATION FACTORS(PERCENT) $k(RI) \times RCR = 5$									
k = 0.60	92	86	83	91	86	82	90	85	82	79
0.80	98	93	90	98	93	90	97	92	90	86
1.00	102	97	94	101	97	94	100	96	93	90
1.25	106	101	98	105	100	98	103	99	97	93
1.50	108	104	101	107	103	100	105	102	99	95
2.00	110	106	103	109	105	103	106	103	101	96
2.50	111	108	105	110	107	105	107	104	103	97
3.00	113	110	107	111	108	106	108	106	104	98
4.00	115	112	110	113	111	109	109	107	106	99
5.00	116	114	112	114	112	111	110	109	108	100
ROOM INDEX	UF(total)									Direct
According to DIN EN 13032-2 2004			Suspended				SHRNOM = 1.25			

C Range: 0 - 360DEG  
 C Interval: 15.0DEG  
 Test Speed: HIGH  
 Temperature:25.2DEG  
 Operators:Cao Chengpei  
 Test Date:2016-06-23

$\gamma$  Range: 0 - 90DEG  
 $\gamma$  Interval: 1.0DEG  
 Test System:EVERFINE GO-2000B\_V1 SYSTEM V2.0.288  
 Humidity:52%  
 Test Distance:5.850m [K=1.0000]  
 Remarks:

ISOCANDELA DIAGRAM

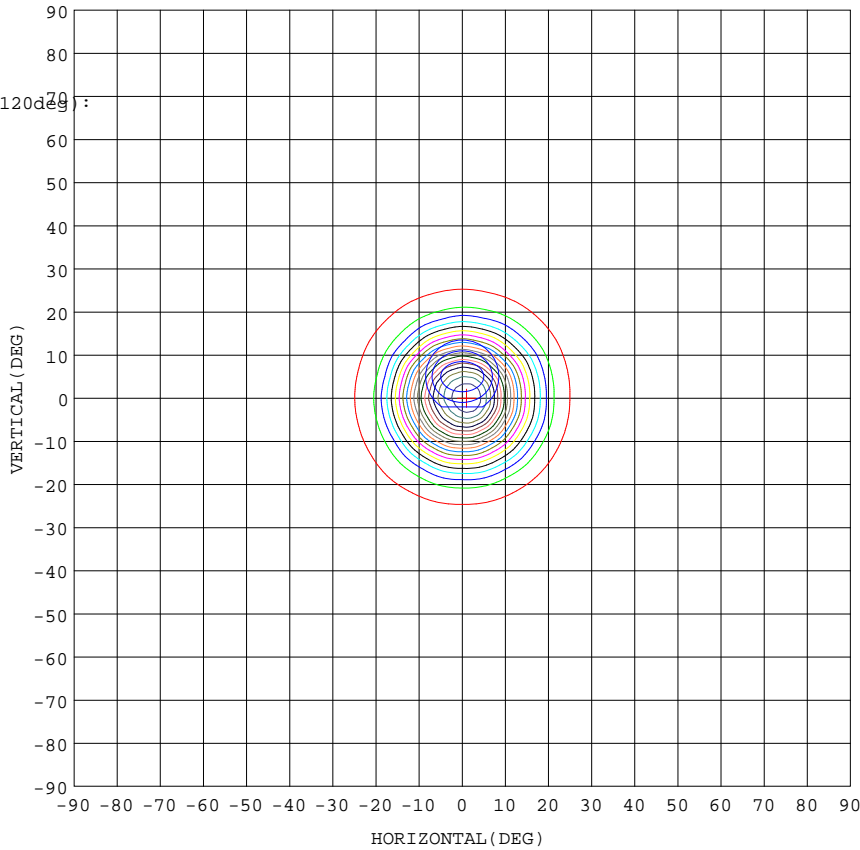
Test:U:220.0V I:0.1185A P:25.14W PF:0.9644 Lamp Flux:1999.4lx1 lm		
NAME: FF10-22W-840-24D Black	TYPE:Downlight	SERIAL No.:
SPEC.:4000K	DIM.: L290mm*W45mm*H60mm	
MFR.: NEKO LIGHTING AG		

Conical surface Flux(90deg):

1998.5 lm  
 %lum = 100.0%  
 %lamp = 100.0%

Conical surface Flux(120deg):

1999 lm  
 %lum = 100.0%  
 %lamp = 100.0%



1. AVG=8787, MIN=7380
2. AVG=8376, MIN=5814
3. AVG=7836, MIN=4248

Imax:10173(H1.0,V0.0)  
 (At:C=0.0,Gamma=1.0)  
 UNIT: cd

C Range: 0 - 360DEG  
 C Interval: 15.0DEG  
 Test Speed: HIGH  
 Temperature:25.2DEG  
 Operators:Cao Chengpei  
 Test Date:2016-06-23

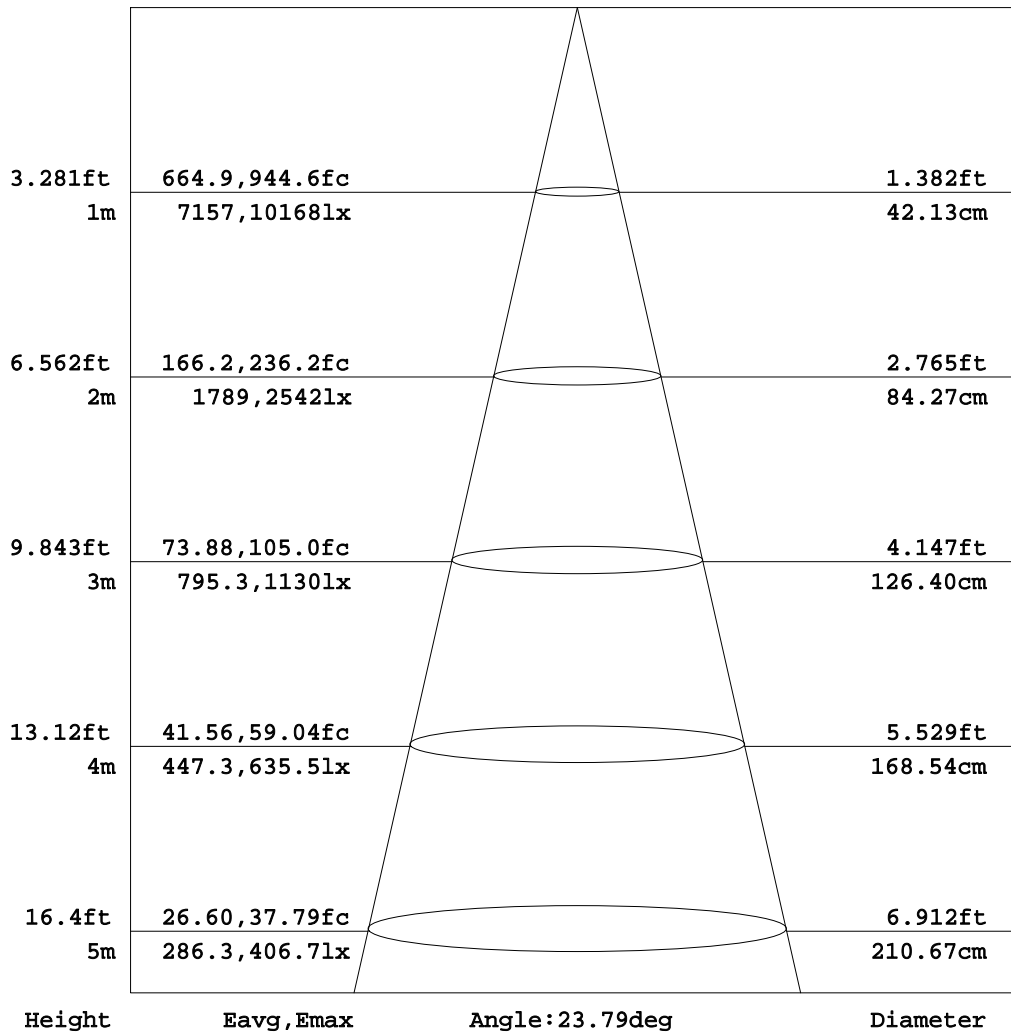
γ Range: 0 - 90DEG  
 γ Interval: 1.0DEG  
 Test System:EVERFINE GO-2000B\_V1 SYSTEM V2.0.288  
 Humidity:52%  
 Test Distance:5.850m [K=1.0000]  
 Remarks:



AAI Figure

Test:U:220.0V I:0.1185A P:25.14W PF:0.9644 Lamp Flux:1999.4lx1 lm		
NAME: FF10-22W-840-24D Black	TYPE:Downlight	SERIAL No.:
SPEC.:4000K	DIM.: L290mm*W45mm*H60mm	
MFR.: NEKO LIGHTING AG		

Flux out:1016 lm



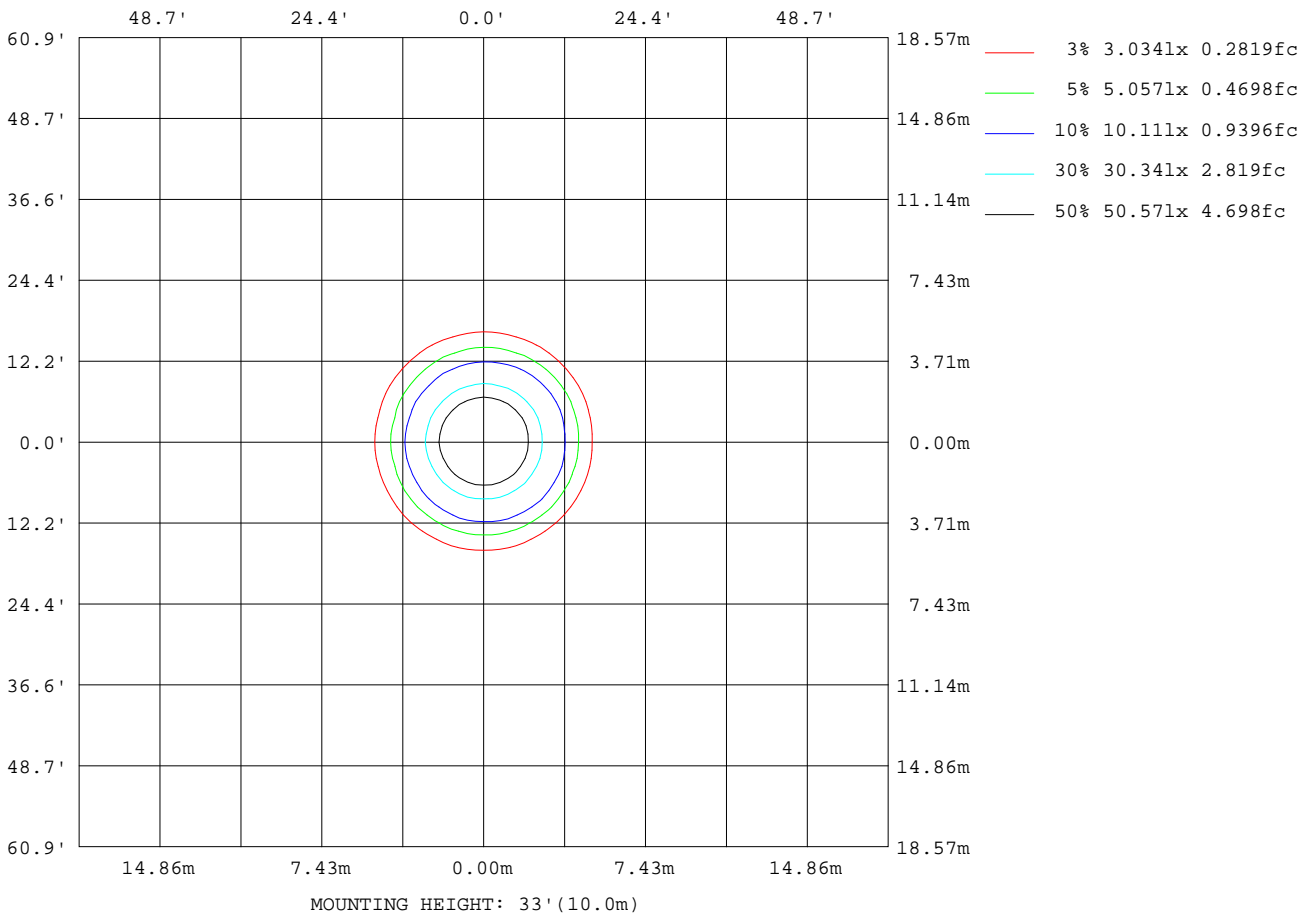
Note:The Curves indicate the illuminated area and the average illumination when the luminaire is at different distance.

C Range: 0 - 360DEG  
 C Interval: 15.0DEG  
 Test Speed: HIGH  
 Temperature:25.2DEG  
 Operators:Cao Chengpei  
 Test Date:2016-06-23

γ Range: 0 - 90DEG  
 γ Interval: 1.0DEG  
 Test System:EVERFINE GO-2000B\_V1 SYSTEM V2.0.288  
 Humidity:52%  
 Test Distance:5.850m [K=1.0000]  
 Remarks:

ISOLUX DIAGRAM

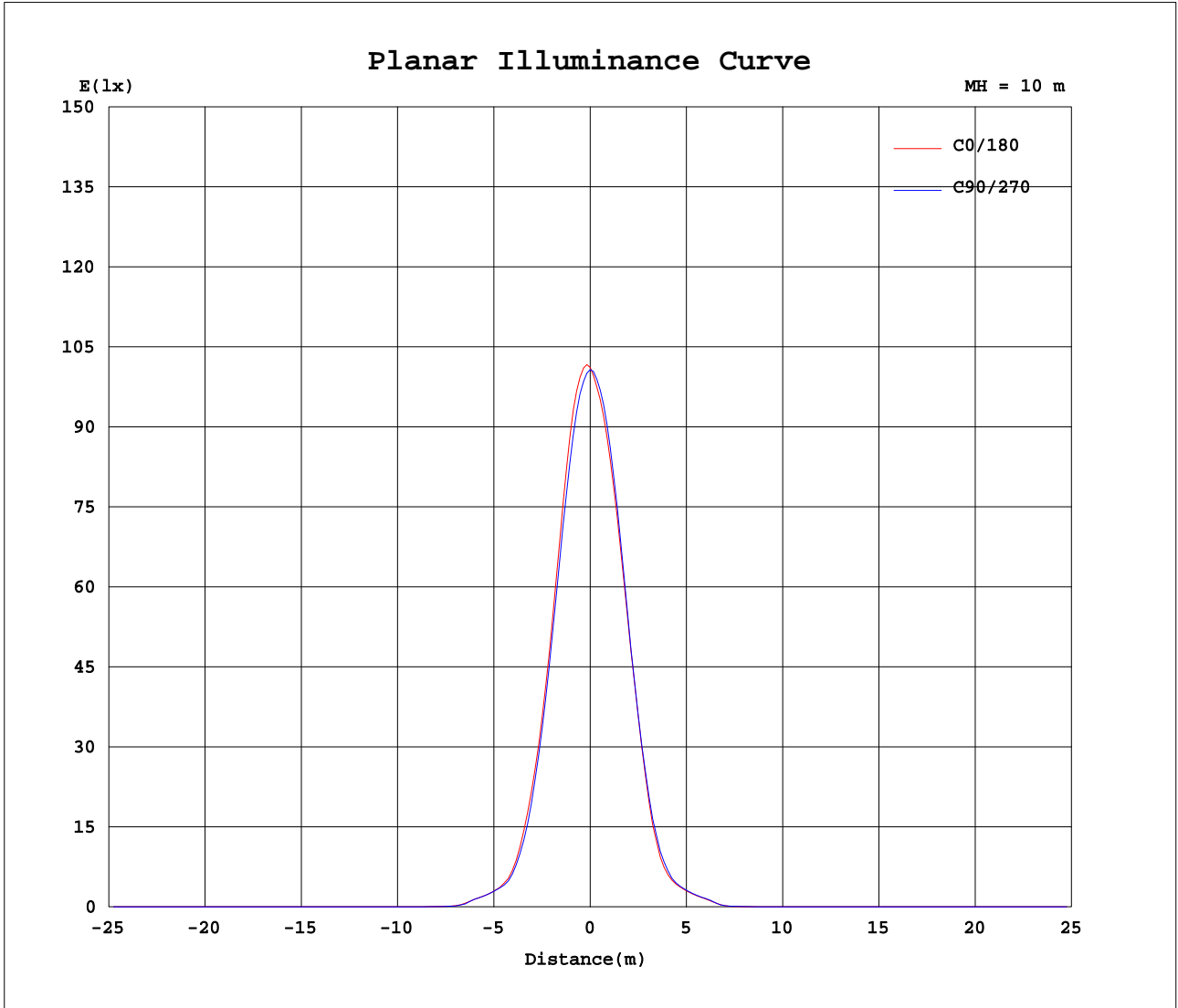
Test:U:220.0V I:0.1185A P:25.14W PF:0.9644 Lamp Flux:1999.4lx1 lm		
NAME: FF10-22W-840-24D Black	TYPE:Downlight	SERIAL No.:
SPEC.:4000K	DIM.: L290mm*W45mm*H60mm	
MFR.: NEKO LIGHTING AG		



C Range: 0 - 360DEG  
 C Interval: 15.0DEG  
 Test Speed: HIGH  
 Temperature:25.2DEG  
 Operators:Cao Chengpei  
 Test Date:2016-06-23

γ Range: 0 - 90DEG  
 γ Interval: 1.0DEG  
 Test System:EVERFINE GO-2000B\_V1 SYSTEM V2.0.288  
 Humidity:52%  
 Test Distance:5.850m [K=1.0000]  
 Remarks:

Planar Illuminance Curve



C Range: 0 - 360DEG  
C Interval: 15.0DEG  
Test Speed: HIGH  
Temperature: 25.2DEG  
Operators: Cao Chengpei  
Test Date: 2016-06-23

$\gamma$  Range: 0 - 90DEG  
 $\gamma$  Interval: 1.0DEG  
Test System: EVERFINE GO-2000B\_V1 SYSTEM V2.0.288  
Humidity: 52%  
Test Distance: 5.850m [K=1.0000]  
Remarks:



LUMINOUS DISTRIBUTION INTENSITY DATA

Test:U:220.0V I:0.1185A P:25.14W PF:0.9644 Lamp Flux:1999.4lx1 lm		
NAME: FF10-22W-840-24D Black	TYPE:Downlight	SERIAL No.:
SPEC.:4000K	DIM.: L290mm*W45mm*H60mm	
MFR.: NEKO LIGHTING AG		

Table--2

UNIT: x10cd

C( DEG) γ (DEG)	285	300	315	330	345														
0	1008	1007	1008	1007	1008														
5	919	932	936	944	943														
10	643	656	653	663	652														
15	336	347	345	352	344														
20	129	141	143	150	142														
25	51.9	53.3	53.4	53.7	51.9														
30	28.4	29.1	29.1	28.6	27.4														
35	3.77	4.06	5.22	4.08	5.22														
40	0.96	1.21	1.18	1.20	1.13														
45	0.06	0.06	0.06	0.06	0.06														
50	0.04	0.04	0.04	0.04	0.04														
55	0.03	0.03	0.03	0.03	0.03														
60	0.02	0.02	0.02	0.02	0.02														
65	0.02	0.02	0.02	0.02	0.02														
70	0.01	0.01	0.01	0.01	0.02														
75	0.01	0.01	0.01	0.01	0.01														
80	0.01	0.01	0.01	0.01	0.01														
85	0.01	0.01	0.01	0.01	0.01														
90	0.01	0.01	0.01	0.01	0.01														

C Range: 0 - 360DEG  
 C Interval: 15.0DEG  
 Test Speed: HIGH  
 Temperature:25.2DEG  
 Operators:Cao Chengpei  
 Test Date:2016-06-23

γ Range: 0 - 90DEG  
 γ Interval: 1.0DEG  
 Test System:EVERFINE GO-2000B\_V1 SYSTEM V2.0.288  
 Humidity:52%  
 Test Distance:5.850m [K=1.0000]  
 Remarks:

Photometric Data Table [cd]

G/C	0.0	15.0	30.0	45.0	60.0	75.0	90.0	105.0	120.0	135.0
0.0	10114	10096	10103	10088	10089	10080	10076	10076	10067	10077
3.0	9969	9994	9955	9931	9835	9768	9659	9602	9500	9484
6.0	8959	8985	8870	8855	8701	8644	8468	8446	8338	8360
9.0	7105	7148	7013	7033	6869	6874	6732	6781	6691	6759
12.0	5082	5128	5012	5041	4905	4935	4831	4894	4832	4915
15.0	3359	3390	3299	3324	3219	3226	3152	3207	3150	3204
18.0	2063	2099	2028	2031	1926	1917	1817	1823	1751	1769
21.0	1080	1101	1064	1075	1012	1013	976.1	983.0	951.9	950.6
24.0	594.6	578.6	585.9	566.2	567.4	555.6	543.8	555.9	550.6	563.5
27.0	394.3	400.6	399.6	396.5	391.1	399.2	391.0	398.8	391.1	397.5
30.0	266.1	271.3	266.1	268.7	264.1	267.5	264.2	269.2	267.2	272.0
33.0	118.4	124.9	112.2	119.7	108.4	118.3	97.43	118.5	102.5	120.0
36.0	29.75	30.58	28.94	31.40	29.16	28.77	25.95	26.64	25.49	25.47
39.0	17.06	16.91	15.87	16.77	15.99	14.18	12.70	12.49	11.76	11.78
42.0	1.581	1.808	1.700	1.770	1.576	1.499	1.429	1.427	1.422	1.467
45.0	0.6620	0.6892	0.7048	0.7040	0.6856	0.6572	0.6366	0.6233	0.6366	0.6300
48.0	0.4776	0.4577	0.4797	0.4513	0.4606	0.4279	0.4499	0.4321	0.4755	0.4619
51.0	0.3881	0.3641	0.3859	0.3619	0.3731	0.3406	0.3604	0.3406	0.3774	0.3640
54.0	0.3261	0.3045	0.3198	0.3002	0.3112	0.2811	0.3027	0.2790	0.3091	0.2981
57.0	0.2792	0.2597	0.2728	0.2512	0.2643	0.2406	0.2579	0.2343	0.2643	0.2427
60.0	0.2430	0.2193	0.2387	0.2151	0.2323	0.2087	0.2280	0.2024	0.2323	0.2087
63.0	0.2152	0.2023	0.2089	0.1980	0.2088	0.1852	0.2025	0.1831	0.2067	0.1831
66.0	0.1940	0.1704	0.1875	0.1640	0.1896	0.1640	0.1854	0.1597	0.1833	0.1639
69.0	0.1769	0.1491	0.1705	0.1469	0.1663	0.1469	0.1641	0.1406	0.1662	0.1406
72.0	0.1620	0.1380	0.1535	0.1342	0.1534	0.1342	0.1513	0.1363	0.1513	0.1341
75.0	0.1470	0.1239	0.1385	0.1193	0.1385	0.1192	0.1343	0.1171	0.1364	0.1171
78.0	0.1321	0.1086	0.1278	0.1043	0.1236	0.1022	0.1173	0.1001	0.1215	0.1001
81.0	0.1236	0.0980	0.1172	0.0959	0.1108	0.0959	0.1108	0.0937	0.1108	0.0958
84.0	0.1109	0.0937	0.1065	0.0895	0.1023	0.0873	0.1044	0.0852	0.1001	0.0831
87.0	0.1023	0.0895	0.0959	0.0873	0.0938	0.0873	0.0938	0.0852	0.0916	0.0831
90.0	0.0937	0.0895	0.0873	0.0873	0.0873	0.0873	0.0873	0.0852	0.0852	0.0852
G/C	150.0	165.0	180.0	195.0	210.0	225.0	240.0	255.0	270.0	285.0
0.0	10065	10083	10114	10096	10103	10088	10089	10080	10076	10076
3.0	9434	9480	9547	9530	9575	9576	9636	9653	9727	9765
6.0	8308	8382	8503	8467	8551	8528	8617	8617	8732	8765
9.0	6706	6818	6956	6896	6996	6932	7046	7003	7120	7092
12.0	4883	4986	5120	5062	5144	5082	5156	5078	5161	5107
15.0	3157	3237	3342	3275	3354	3290	3371	3302	3386	3357
18.0	1703	1736	1797	1755	1833	1805	1873	1844	1923	1929
21.0	906.8	903.6	917.1	897.8	943.8	942.3	990.6	983.0	1038	1052
24.0	553.4	556.5	566.9	568.5	574.8	583.6	584.3	592.9	594.2	608.3
27.0	386.8	391.0	399.3	395.3	409.6	407.6	415.4	411.4	418.2	416.8
30.0	266.5	270.4	276.9	275.6	285.4	284.7	292.0	284.5	285.6	283.9
33.0	108.5	121.0	132.0	127.4	141.9	135.0	144.2	132.9	139.1	135.0
36.0	22.90	21.53	22.60	23.82	27.83	28.36	29.13	27.74	27.80	27.92
39.0	11.01	10.08	10.16	10.66	12.69	12.95	13.33	12.86	13.66	13.28
42.0	1.453	1.725	2.643	2.558	3.046	2.719	2.832	1.838	1.632	1.340
45.0	0.6281	0.6447	0.6762	0.6810	0.6973	0.6874	0.6867	0.6510	0.6252	0.6147
48.0	0.4712	0.4556	0.4661	0.4796	0.4618	0.4796	0.4682	0.4690	0.4405	0.4604
51.0	0.3732	0.3555	0.3682	0.3816	0.3618	0.3816	0.3639	0.3709	0.3427	0.3666
54.0	0.3048	0.2895	0.2959	0.3154	0.2938	0.3091	0.2916	0.3027	0.2811	0.3048
57.0	0.2579	0.2406	0.2491	0.2643	0.2427	0.2600	0.2427	0.2558	0.2321	0.2537
60.0	0.2217	0.2023	0.2129	0.2280	0.2044	0.2238	0.2024	0.2237	0.2001	0.2216
63.0	0.1940	0.1746	0.1873	0.2003	0.1767	0.1939	0.1724	0.1939	0.1703	0.1960
66.0	0.1748	0.1576	0.1639	0.1790	0.1512	0.1705	0.1491	0.1705	0.1469	0.1726
69.0	0.1577	0.1406	0.1427	0.1556	0.1363	0.1534	0.1342	0.1492	0.1342	0.1534
72.0	0.1428	0.1341	0.1363	0.1406	0.1256	0.1364	0.1192	0.1364	0.1171	0.1343
75.0	0.1321	0.1107	0.1235	0.1257	0.1043	0.1236	0.1057	0.1236	0.1069	0.1215
78.0	0.1151	0.0980	0.1044	0.1172	0.0979	0.1129	0.0982	0.1087	0.0979	0.1150
81.0	0.1023	0.0937	0.0979	0.1065	0.0809	0.1001	0.0788	0.0980	0.0809	0.1002
84.0	0.0938	0.0831	0.0852	0.0938	0.0724	0.0874	0.0703	0.0874	0.0703	0.0895
87.0	0.0874	0.0831	0.0810	0.0831	0.0724	0.0809	0.0682	0.0767	0.0703	0.0788
90.0	0.0852	0.0852	0.0831	0.0746	0.0724	0.0703	0.0682	0.0660	0.0682	0.0682
G/C	300.0	315.0	330.0	345.0						
0.0	10067	10077	10065	10083						
3.0	9850	9893	9959	9974						
6.0	8917	8942	9039	9006						
9.0	7218	7192	7305	7208						
12.0	5237	5211	5295	5192						
15.0	3471	3449	3524	3440						
18.0	2053	2086	2173	2125						
21.0	1133	1154	1189	1135						

C Range: 0 - 360DEG  
 C Interval: 15.0DEG  
 Test Speed: HIGH  
 Temperature: 25.2DEG  
 Operators: Cao Chengpei  
 Test Date: 2016-06-23

γ Range: 0 - 90DEG  
 γ Interval: 1.0DEG  
 Test System: EVERFINE GO-2000B\_V1 SYSTEM V2.0.288  
 Humidity: 52%  
 Test Distance: 5.850m [K=1.0000]  
 Remarks:

## Photometric Data Table [cd]

24.0	611.8	633.4	627.0	618.8
27.0	423.0	419.0	419.1	406.4
30.0	291.1	290.5	285.7	274.1
33.0	144.4	139.9	141.6	128.3
36.0	30.40	30.87	29.74	30.18
39.0	15.79	16.45	16.54	16.85
42.0	1.366	1.392	1.476	1.567
45.0	0.6064	0.6040	0.6042	0.6297
48.0	0.4448	0.4604	0.4448	0.4668
51.0	0.3490	0.3646	0.3534	0.3794
54.0	0.2831	0.3027	0.2896	0.3133
57.0	0.2364	0.2600	0.2427	0.2664
60.0	0.2023	0.2259	0.2065	0.2323
63.0	0.1725	0.1940	0.1767	0.2003
66.0	0.1491	0.1726	0.1597	0.1790
69.0	0.1342	0.1534	0.1363	0.1598
72.0	0.1171	0.1385	0.1256	0.1427
75.0	0.1022	0.1257	0.1044	0.1300
78.0	0.1021	0.1130	0.0959	0.1151
81.0	0.0767	0.1023	0.0830	0.1065
84.0	0.0703	0.0874	0.0724	0.0938
87.0	0.0681	0.0788	0.0724	0.0810
90.0	0.0660	0.0660	0.0660	0.0682

C Range: 0 - 360DEG  
C Interval: 15.0DEG  
Test Speed: HIGH  
Temperature: 25.2DEG  
Operators: Cao Chengpei  
Test Date: 2016-06-23

$\gamma$  Range: 0 - 90DEG  
 $\gamma$  Interval: 1.0DEG  
Test System: EVERFINE GO-2000B\_V1 SYSTEM V2.0.288  
Humidity: 52%  
Test Distance: 5.850m [K=1.0000]  
Remarks: