

LED Downlight FUSION Series FF1-2W-840-24D Specular



Light Output Ratio:	100.0%	
Luminaire Power:	3.167 W	
SHR Nominal:	0.00	Calculated using the TM5
SHR Maximum:	1.00	fine grid method.

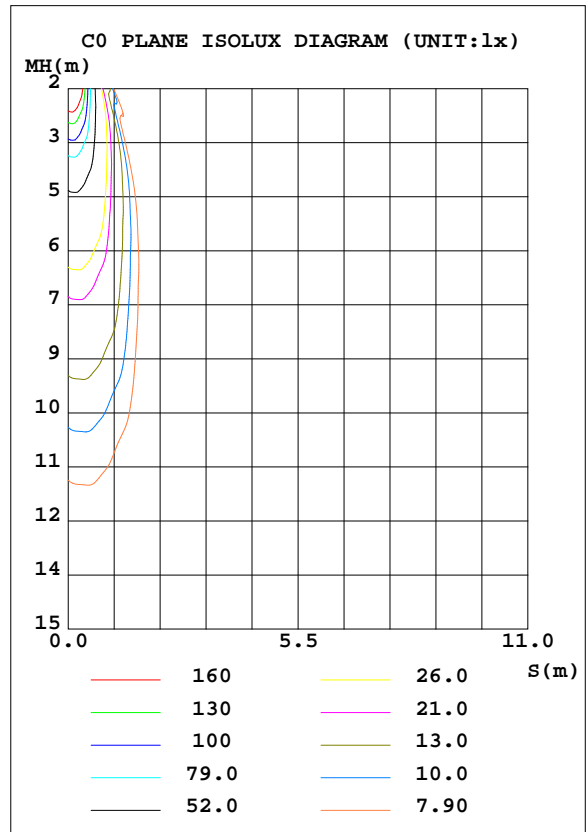
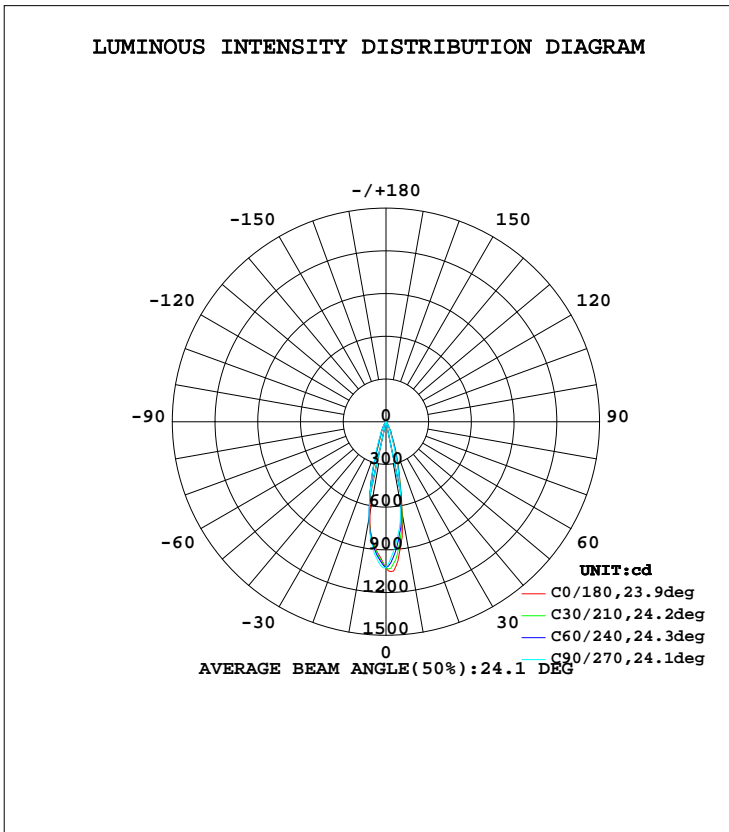
C Range: 0 - 360DEG  
C Interval: 15.0DEG  
Test Speed: HIGH  
Temperature: 25.3DEG  
Operators: Meng Yongjian  
Test Date: 2017-06-14

$\gamma$  Range: 0 - 90DEG  
 $\gamma$  Interval: 1.0DEG  
Test System: EVERFINE GO-2000B\_V1 SYSTEM V2.0.288  
Humidity: 52%  
Test Distance: 5.850m [K=1.0000]  
Remarks:

LUMINAIRE PHOTOMETRIC TEST REPORT

Test:U:220.7V I:0.0202A P:3.167W PF:0.7094 Lamp Flux:219.4x1 lm		
NAME: FF1-2W-840-24D Specular	TYPE:Downlight	SERIAL No.:
SPEC.:4000K	DIM.: L45mm*W45mm*H60mm	
MFR.: NEKO LIGHTING AG		

DATA OF LAMP		PHOTOMETRIC DATA Eff: 69.27 lm/W			
MODEL	CREE-4000K	I <sub>max</sub> (cd)	1063	S/MH(C0/180)	0.41
NOMINAL POWER(W)	3.0	LOR(%)	100.0	S/MH(C90/270)	0.43
RATED VOLTAGE(V)	220	TOTAL FLUX(lm)	219.40	η UP, DN(C0-180)	0.0, 48.4
NOMINAL FLUX(lm)	219.4	CIE CLASS	DIRECT	η UP, DN(C180-360)	0.0, 51.6
LAMPS INSIDE	1	η up(%)	0.0	CIBSE SHR NOM	0.00
TEST VOLTAGE(V)	220	η down(%)	100.0	CIBSE SHR MAX	1.00



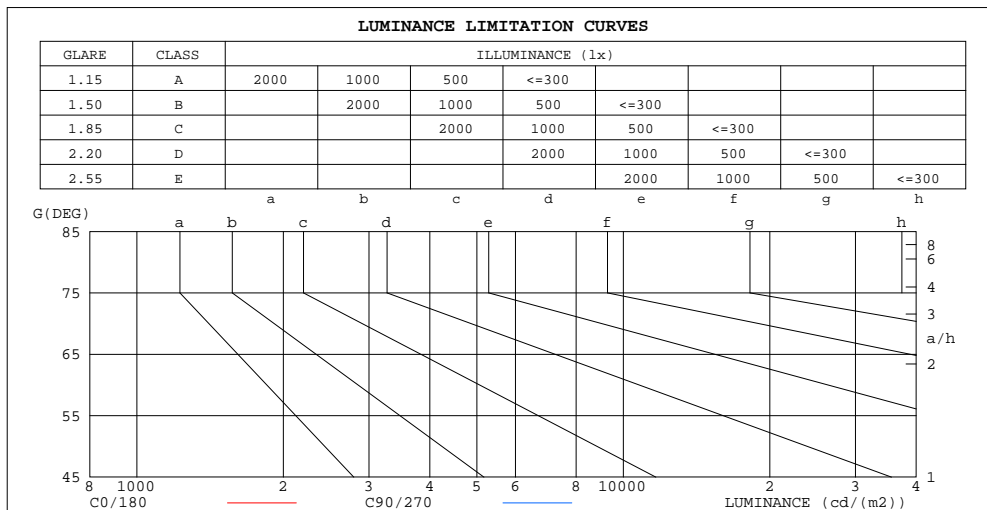
C Range: 0 - 360DEG  
 C Interval: 15.0DEG  
 Test Speed: HIGH  
 Temperature:25.3DEG  
 Operators:Meng Yongjian  
 Test Date:2017-06-14

γ Range: 0 - 90DEG  
 γ Interval: 1.0DEG  
 Test System:EVERFINE GO-2000B\_V1 SYSTEM V2.0.288  
 Humidity:52%  
 Test Distance:5.850m [K=1.0000]  
 Remarks:

**ZONAL FLUX DIAGRAM  
AND LUMINANCE LIMITATION CURVES**

**ZONAL FLUX DIAGRAM:**

$\gamma$	C0	C45	C90	C135	C180	C225	C270	C315	$\gamma$	$\Phi$ zone	$\Phi$ total	$\Phi$ lum,lamp
10	659.2	643.2	607.1	623.6	652.7	669.2	689.8	668.2	0- 10	78.79	78.79	35.9,35.9
20	176.7	162.0	134.1	120.2	117.7	137.8	165.0	186.0	10- 20	95.83	174.6	79.6,79.6
30	31.33	32.40	32.26	33.64	35.01	36.69	36.13	34.35	20- 30	36.02	210.6	96,96
40	2.768	2.863	2.153	2.096	2.089	2.035	2.272	2.498	30- 40	8.321	219.0	99.8,99.8
50	0.0722	0.0634	0.0876	0.0633	0.0415	0.0766	0.0590	0.0700	40- 50	0.3302	219.3	100,100
60	0.0481	0.0372	0.0612	0.0328	0.0371	0.0459	0.0328	0.0437	50- 60	0.0458	219.3	100,100
70	0.0415	0.0218	0.0394	0.0218	0.0153	0.0263	0.0153	0.0284	60- 70	0.0339	219.4	100,100
80	0.0175	0.0022	0.0153	0.0022	0.0022	0.0131	0.0022	0.0109	70- 80	0.0155	219.4	100,100
90	0.0044	0.0022	0.0044	0.0022	0.0022	0.0022	0.0022	0.0022	80- 90	0.0056	219.4	100,100
100									90-100			
110									100-110			
120									110-120			
130									120-130			
140									130-140			
150									140-150			
160									150-160			
170									160-170			
180									170-180			
DEG	LUMINOUS INTENSITY:cd									UNIT:lm		



LUMINANCE cd/(m2)		
G(DEG)	C0/180	C90/270
85	50	37
80	50	44
75	50	46
70	60	57
65	49	59
60	48	60
55	51	62
50	55	67
45	102	104

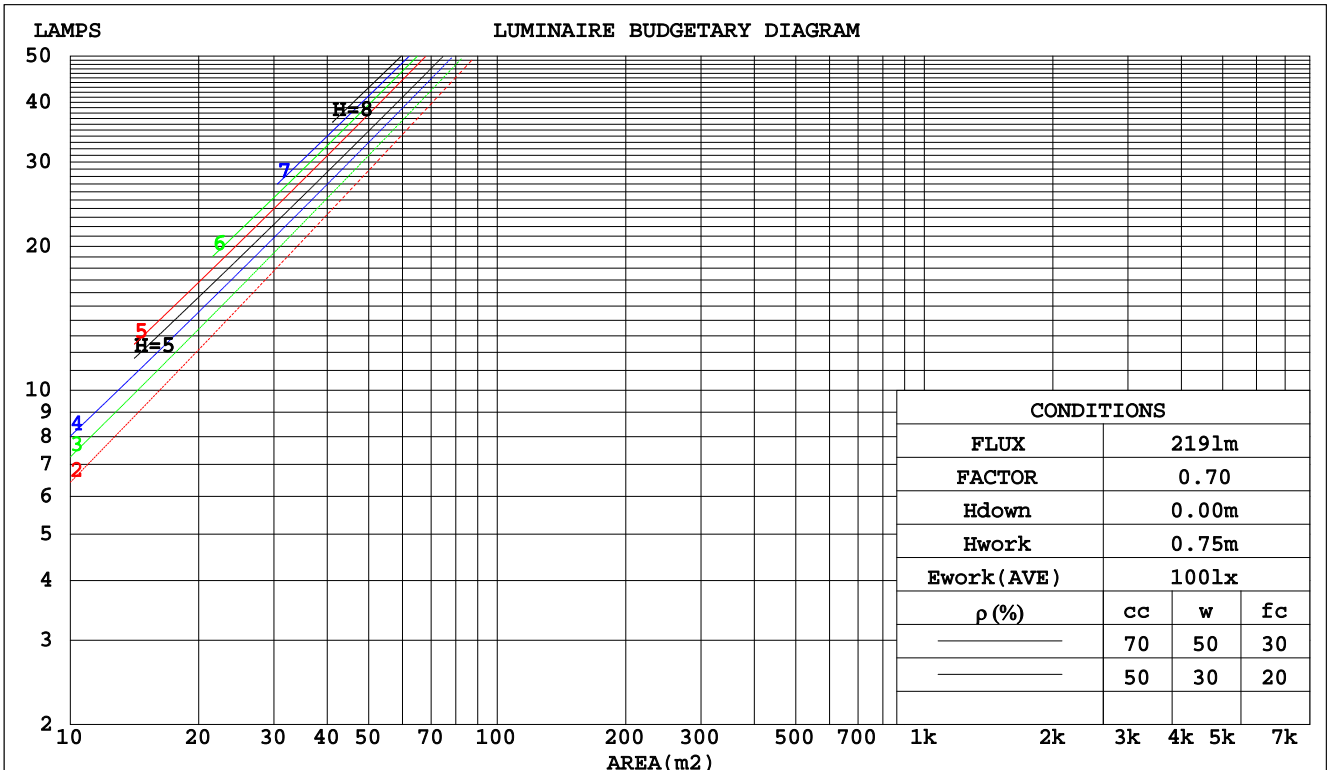
C Range: 0 - 360DEG  
C Interval: 15.0DEG  
Test Speed: HIGH  
Temperature:25.3DEG  
Operators:Meng Yongjian  
Test Date:2017-06-14

$\gamma$  Range: 0 - 90DEG  
 $\gamma$  Interval: 1.0DEG  
Test System:EVERFINE GO-2000B\_V1 SYSTEM V2.0.288  
Humidity:52%  
Test Distance:5.850m [K=1.0000]  
Remarks:

**CU AND LUMINAIRE BUDGETARY ESTIMATE DIAGRAM**

Test:U:220.7V I:0.0202A P:3.167W PF:0.7094 Lamp Flux:219.4x1 lm		
NAME: FF1-2W-840-24D Specular	TYPE:Downlight	SERIAL No.:
SPEC.:4000K	DIM.: L45mm*W45mm*H60mm	
MFR.: NEKO LIGHTING AG		

pcc	80%			70%			50%			30%			10%			0
	50%	30%	10%	50%	30%	10%	50%	30%	10%	50%	30%	10%	50%	30%	10%	0
pw																
pfc																
RCR	RCR:Room Cavity Ratio															
	Coefficients of Utilization(CU)															
0.0	1.19	1.19	1.19	1.16	1.16	1.16	1.11	1.11	1.11	1.06	1.06	1.06	1.02	1.02	1.02	1.00
1.0	1.13	1.11	1.09	1.11	1.09	1.08	1.07	1.06	1.04	1.03	1.02	1.01	.00	.99	.98	.97
2.0	1.08	1.05	1.02	1.06	1.04	1.01	1.03	1.01	.99	1.00	.98	.97	.98	.96	.95	.94
3.0	1.03	.00	.97	1.02	.99	.96	.00	.97	.95	.97	.95	.93	.95	.93	.92	.91
4.0	.99	.95	.92	.98	.95	.92	.96	.93	.91	.94	.92	.90	.93	.91	.89	.88
5.0	.96	.92	.89	.95	.91	.88	.93	.90	.88	.92	.89	.87	.90	.88	.86	.85
6.0	.93	.88	.85	.92	.88	.85	.91	.87	.85	.89	.86	.84	.88	.86	.84	.83
7.0	.90	.85	.83	.89	.85	.82	.88	.84	.82	.87	.84	.82	.86	.83	.81	.80
8.0	.87	.83	.80	.86	.83	.80	.85	.82	.80	.85	.82	.79	.84	.81	.79	.78
9.0	.84	.80	.78	.84	.80	.78	.83	.80	.77	.82	.79	.77	.82	.79	.77	.76
10.0	.82	.78	.75	.82	.78	.75	.81	.78	.75	.80	.77	.75	.80	.77	.75	.74



C Range: 0 - 360DEG  
 C Interval: 15.0DEG  
 Test Speed: HIGH  
 Temperature:25.3DEG  
 Operators:Meng Yongjian  
 Test Date:2017-06-14

γ Range: 0 - 90DEG  
 γ Interval: 1.0DEG  
 Test System:EVERFINE GO-2000B\_V1 SYSTEM V2.0.288  
 Humidity:52%  
 Test Distance:5.850m [K=1.0000]  
 Remarks:

WEC AND CCEC

Test:U:220.7V I:0.0202A P:3.167W PF:0.7094 Lamp Flux:219.4x1 lm		
NAME: FF1-2W-840-24D Specular	TYPE:Downlight	SERIAL No.:
SPEC.:4000K	DIM.: L45mm*W45mm*H60mm	
MFR.: NEKO LIGHTING AG		

ρcc	80%			70%			50%			30%			10%			0
ρw	50%	30%	10%	50%	30%	10%	50%	30%	10%	50%	30%	10%	50%	30%	10%	0
ρfc	20%			20%			20%			20%			20%			0
RCR	RCR:Room Cavity Ratio						Wall Exitance Coefficients(WEC)									
0.0																
1.0	.135	.077	.024	.128	.073	.023	.116	.067	.021	.105	.060	.019	.094	.055	.018	
2.0	.125	.069	.021	.120	.066	.020	.109	.061	.019	.100	.056	.018	.091	.052	.016	
3.0	.117	.062	.019	.112	.060	.018	.104	.056	.017	.096	.052	.016	.088	.049	.015	
4.0	.109	.057	.017	.105	.055	.016	.098	.052	.016	.092	.049	.015	.085	.046	.014	
5.0	.103	.052	.015	.100	.051	.015	.094	.049	.014	.088	.046	.014	.083	.044	.013	
6.0	.097	.049	.014	.095	.048	.014	.089	.046	.013	.085	.044	.013	.080	.042	.013	
7.0	.093	.046	.013	.090	.045	.013	.086	.043	.012	.081	.042	.012	.077	.040	.012	
8.0	.088	.043	.012	.086	.042	.012	.082	.041	.012	.079	.040	.011	.075	.039	.011	
9.0	.085	.041	.011	.083	.040	.011	.079	.039	.011	.076	.038	.011	.073	.037	.011	
10.0	.081	.039	.011	.079	.038	.011	.076	.037	.011	.073	.036	.010	.071	.035	.010	

ρcc	80%			70%			50%			30%			10%			0
ρw	50%	30%	10%	50%	30%	10%	50%	30%	10%	50%	30%	10%	50%	30%	10%	0
ρfc	20%			20%			20%			20%			20%			0
RCR	RCR:Room Cavity Ratio						Ceiling Cavity Exitance Coefficients(CCEC)									
0.0	.190	.190	.190	.163	.163	.163	.111	.111	.111	.064	.064	.064	.020	.020	.020	
1.0	.168	.158	.148	.144	.135	.128	.098	.093	.088	.057	.054	.051	.018	.017	.017	
2.0	.150	.133	.118	.128	.114	.102	.088	.079	.071	.051	.046	.042	.016	.015	.014	
3.0	.135	.113	.096	.116	.098	.083	.079	.068	.058	.046	.040	.034	.015	.013	.011	
4.0	.122	.098	.079	.105	.085	.069	.072	.059	.048	.042	.035	.029	.013	.011	.009	
5.0	.112	.086	.066	.096	.074	.058	.066	.052	.041	.038	.030	.024	.012	.010	.008	
6.0	.103	.076	.056	.088	.065	.049	.061	.046	.034	.035	.027	.020	.011	.009	.007	
7.0	.095	.067	.048	.082	.058	.042	.057	.041	.029	.033	.024	.018	.011	.008	.006	
8.0	.089	.061	.041	.076	.053	.036	.053	.037	.025	.031	.022	.015	.010	.007	.005	
9.0	.083	.055	.036	.072	.048	.031	.050	.033	.022	.029	.020	.013	.009	.006	.004	
10.0	.078	.050	.031	.068	.044	.027	.047	.031	.019	.027	.018	.012	.009	.006	.004	

C Range: 0 - 360DEG  
 C Interval: 15.0DEG  
 Test Speed: HIGH  
 Temperature:25.3DEG  
 Operators:Meng Yongjian  
 Test Date:2017-06-14

γ Range: 0 - 90DEG  
 γ Interval: 1.0DEG  
 Test System:EVERFINE GO-2000B\_V1 SYSTEM V2.0.288  
 Humidity:52%  
 Test Distance:5.850m [K=1.0000]  
 Remarks:

UGR(Unified Glare Rating) Table

Test:U:220.7V I:0.0202A P:3.167W PF:0.7094 Lamp Flux:219.4x1 lm		
NAME: FF1-2W-840-24D Specular	TYPE:Downlight	SERIAL No.:
SPEC.:4000K	DIM.: L45mm*W45mm*H60mm	
MFR.: NEKO LIGHTING AG		

ceiling/cavity	0.7	0.7	0.5	0.5	0.3	0.7	0.7	0.5	0.5	0.3
walls	0.5	0.3	0.5	0.3	0.3	0.5	0.3	0.5	0.3	0.3
working plane	0.2	0.2	0.2	0.2	0.2	0.2	0.2	0.2	0.2	0.2
Room dimensions	Viewed crosswise					Viewed endwise				
x = 2H y = 2H	4.2	4.9	4.4	5.0	5.2	4.5	5.2	4.7	5.3	5.5
3H	4.1	4.7	4.3	4.9	5.1	4.4	5.0	4.6	5.1	5.3
4H	4.0	4.6	4.3	4.8	5.0	4.3	4.9	4.5	5.1	5.3
6H	3.9	4.5	4.2	4.7	4.9	4.2	4.7	4.5	5.0	5.2
8H	3.9	4.4	4.2	4.6	4.9	4.2	4.7	4.5	4.9	5.2
12H	3.8	4.3	4.1	4.6	4.9	4.1	4.6	4.4	4.9	5.1
4H 2H	4.0	4.6	4.3	4.8	5.0	4.3	4.9	4.5	5.1	5.3
3H	3.8	4.3	4.1	4.6	4.9	4.1	4.6	4.4	4.9	5.1
4H	3.7	4.2	4.1	4.5	4.8	4.0	4.5	4.4	4.8	5.1
6H	3.6	4.0	4.0	4.4	4.7	3.9	4.3	4.3	4.7	5.0
8H	3.6	4.0	4.0	4.3	4.7	3.9	4.2	4.3	4.6	5.0
12H	3.5	3.9	3.9	4.2	4.6	3.8	4.2	4.2	4.5	4.9
8H 4H	3.6	4.0	4.0	4.3	4.7	3.9	4.2	4.3	4.6	5.0
6H	3.5	3.8	3.9	4.2	4.6	3.8	4.1	4.2	4.5	4.9
8H	3.4	3.7	3.9	4.1	4.5	3.7	4.0	4.1	4.4	4.8
12H	3.4	3.6	3.8	4.0	4.5	3.6	3.9	4.1	4.3	4.8
12H 4H	3.5	3.9	3.9	4.2	4.6	3.8	4.2	4.2	4.5	4.9
6H	3.4	3.7	3.9	4.1	4.5	3.7	4.0	4.1	4.4	4.8
8H	3.4	3.6	3.8	4.0	4.5	3.6	3.9	4.1	4.3	4.8
Variations with the observer position at spacings:										
S = 1.0H	+ 3.5 / -17.2					+ 3.4 / -15.8				
1.5H	+ 6.3 / -17.3					+ 6.2 / -16.0				
2.0H	+ 3.2 / - 2.2					+ 2.5 / - 1.2				

CIE Pub.117 Corrected 219.4 lm Total Lamp Luminous Flux. (8log(F/F0) = -5.3)

C Range: 0 - 360DEG  
 C Interval: 15.0DEG  
 Test Speed: HIGH  
 Temperature:25.3DEG  
 Operators:Meng Yongjian  
 Test Date:2017-06-14

γ Range: 0 - 90DEG  
 γ Interval: 1.0DEG  
 Test System:EVERFINE GO-2000B\_V1 SYSTEM V2.0.288  
 Humidity:52%  
 Test Distance:5.850m [K=1.0000]  
 Remarks:

UTILIZATION FACTORS TABLE

Test:U:220.7V I:0.0202A P:3.167W PF:0.7094 Lamp Flux:219.4x1 lm		
NAME: FF1-2W-840-24D Specular	TYPE:Downlight	SERIAL No.:
SPEC.:4000K	DIM.: L45mm*W45mm*H60mm	
MFR.: NEKO LIGHTING AG		

REFLECTANCE										
Ceiling	0.8	0.8	0.8	0.7	0.7	0.7	0.5	0.5	0.5	0
Walls	0.7	0.5	0.3	0.7	0.5	0.3	0.7	0.5	0.3	0
Working plane	0.2	0.2	0.2	0.2	0.2	0.2	0.2	0.2	0.2	0
ROOM INDEX	UTILIZATION FACTORS(PERCENT) $k(RI) \times RCR = 5$									
k = 0.60	91	86	83	91	86	82	90	85	82	79
0.80	98	93	90	98	93	90	97	92	89	86
1.00	102	97	94	101	97	94	100	96	93	90
1.25	105	101	98	104	100	97	103	99	97	93
1.50	108	104	101	107	103	100	105	102	99	95
2.00	110	106	103	109	105	103	106	103	101	96
2.50	111	108	105	110	107	104	107	104	103	97
3.00	113	110	107	111	108	106	108	106	104	98
4.00	115	112	110	113	111	109	109	107	106	99
5.00	116	114	112	114	112	111	110	109	108	100
ROOM INDEX	UF(total)									Direct
According to DIN EN 13032-2 2004			Suspended				SHRNOM = 1.25			

C Range: 0 - 360DEG  
 C Interval: 15.0DEG  
 Test Speed: HIGH  
 Temperature:25.3DEG  
 Operators:Meng Yongjian  
 Test Date:2017-06-14

$\gamma$  Range: 0 - 90DEG  
 $\gamma$  Interval: 1.0DEG  
 Test System:EVERFINE GO-2000B\_V1 SYSTEM V2.0.288  
 Humidity:52%  
 Test Distance:5.850m [K=1.0000]  
 Remarks:

**ISOCANDELA DIAGRAM**

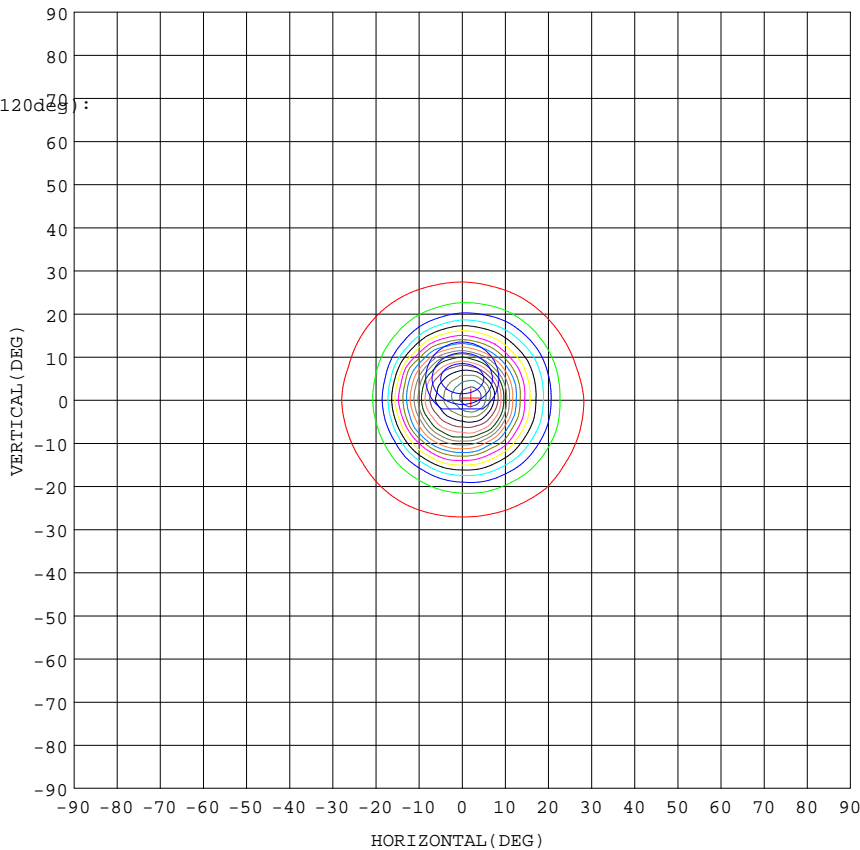
Test:U:220.7V I:0.0202A P:3.167W PF:0.7094 Lamp Flux:219.4x1 lm		
NAME: FF1-2W-840-24D Specular	TYPE:Downlight	SERIAL No.:
SPEC.:4000K	DIM.: L45mm*W45mm*H60mm	
MFR.: NEKO LIGHTING AG		

Conical surface Flux(90deg):

219.27 lm  
%lum = 99.9%  
%lamp = 99.9%

Conical surface Flux(120deg):

219.34 lm  
%lum = 100.0%  
%lamp = 100.0%



1. AVG=900.4,MIN=771.5
2. AVG=862.7,MIN=619.3
3. AVG=807.7,MIN=456.6

Imax:1061(H2.0,V0.5)  
(At:C=345.0,Gamma=2.0)  
UNIT: cd

C Range: 0 - 360DEG  
C Interval: 15.0DEG  
Test Speed: HIGH  
Temperature:25.3DEG  
Operators:Meng Yongjian  
Test Date:2017-06-14

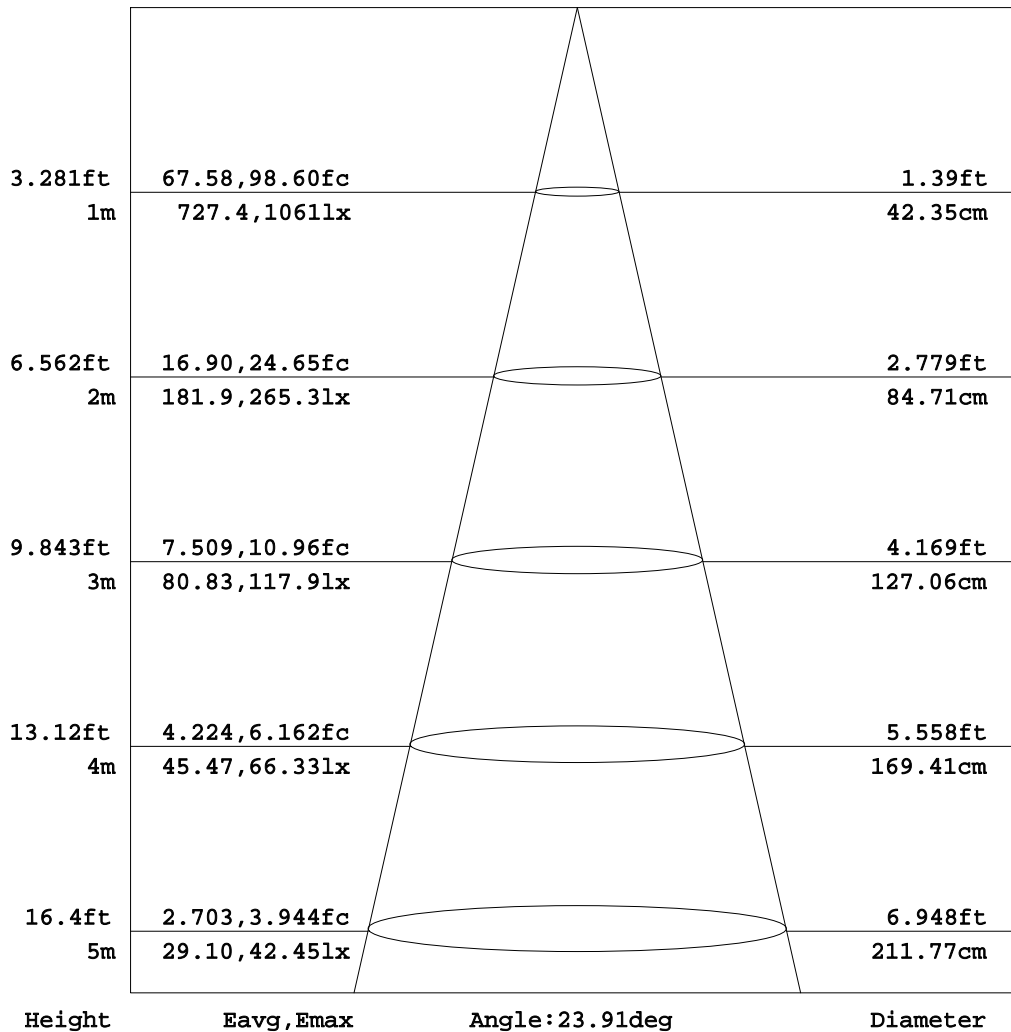
γ Range: 0 - 90DEG  
γ Interval: 1.0DEG  
Test System:EVERFINE GO-2000B\_V1 SYSTEM V2.0.288  
Humidity:52%  
Test Distance:5.850m [K=1.0000]  
Remarks:



**AAI Figure**

Test:U:220.7V I:0.0202A P:3.167W PF:0.7094 Lamp Flux:219.4x1 lm		
NAME: FF1-2W-840-24D Specular	TYPE:Downlight	SERIAL No.:
SPEC.:4000K	DIM.: L45mm*W45mm*H60mm	
MFR.: NEKO LIGHTING AG		

Flux out:103.3 lm



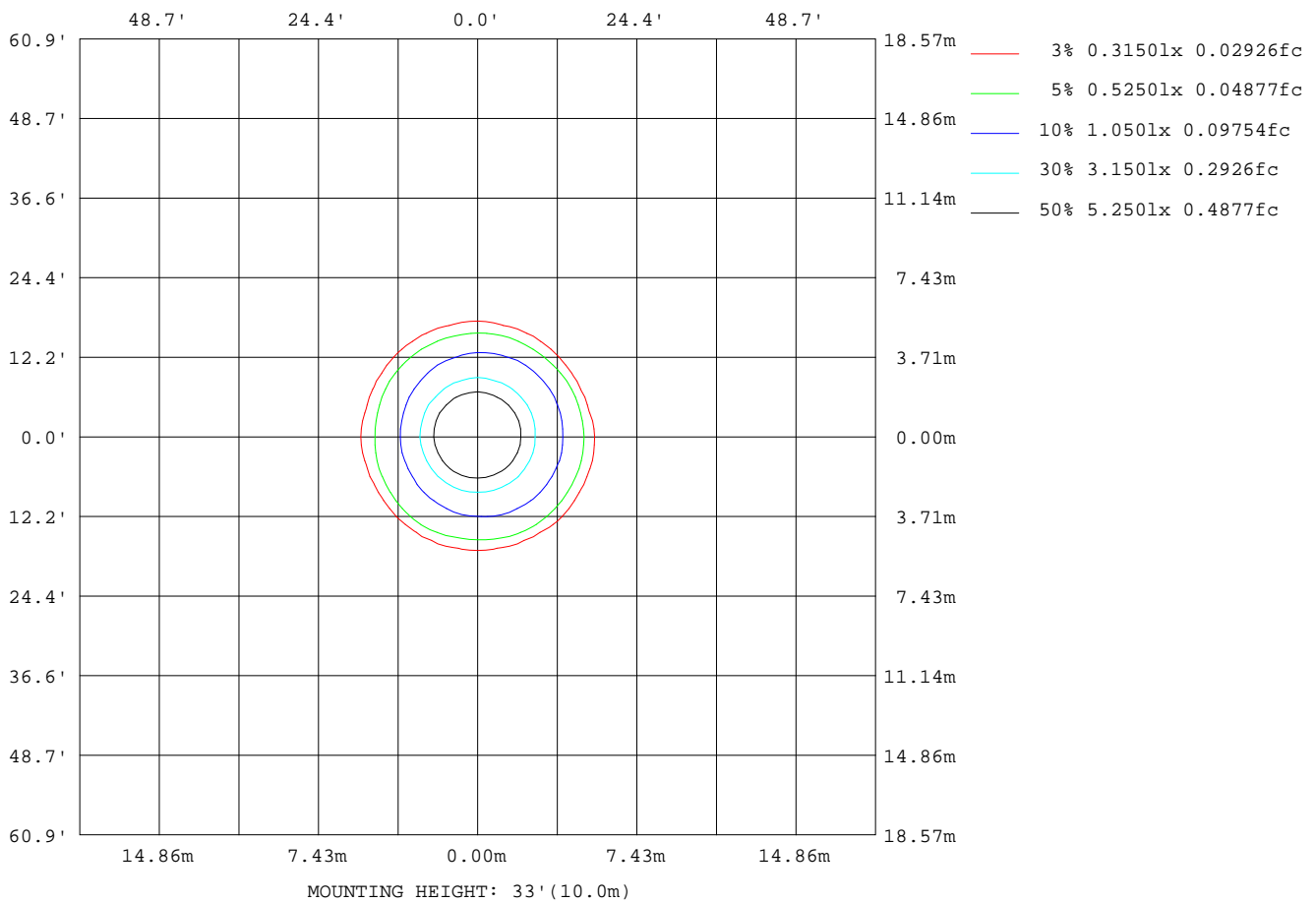
Note:The Curves indicate the illuminated area and the average illumination when the luminaire is at different distance.

C Range: 0 - 360DEG  
C Interval: 15.0DEG  
Test Speed: HIGH  
Temperature:25.3DEG  
Operators:Meng Yongjian  
Test Date:2017-06-14

γ Range: 0 - 90DEG  
γ Interval: 1.0DEG  
Test System:EVERFINE GO-2000B\_V1 SYSTEM V2.0.288  
Humidity:52%  
Test Distance:5.850m [K=1.0000]  
Remarks:

**ISOLUX DIAGRAM**

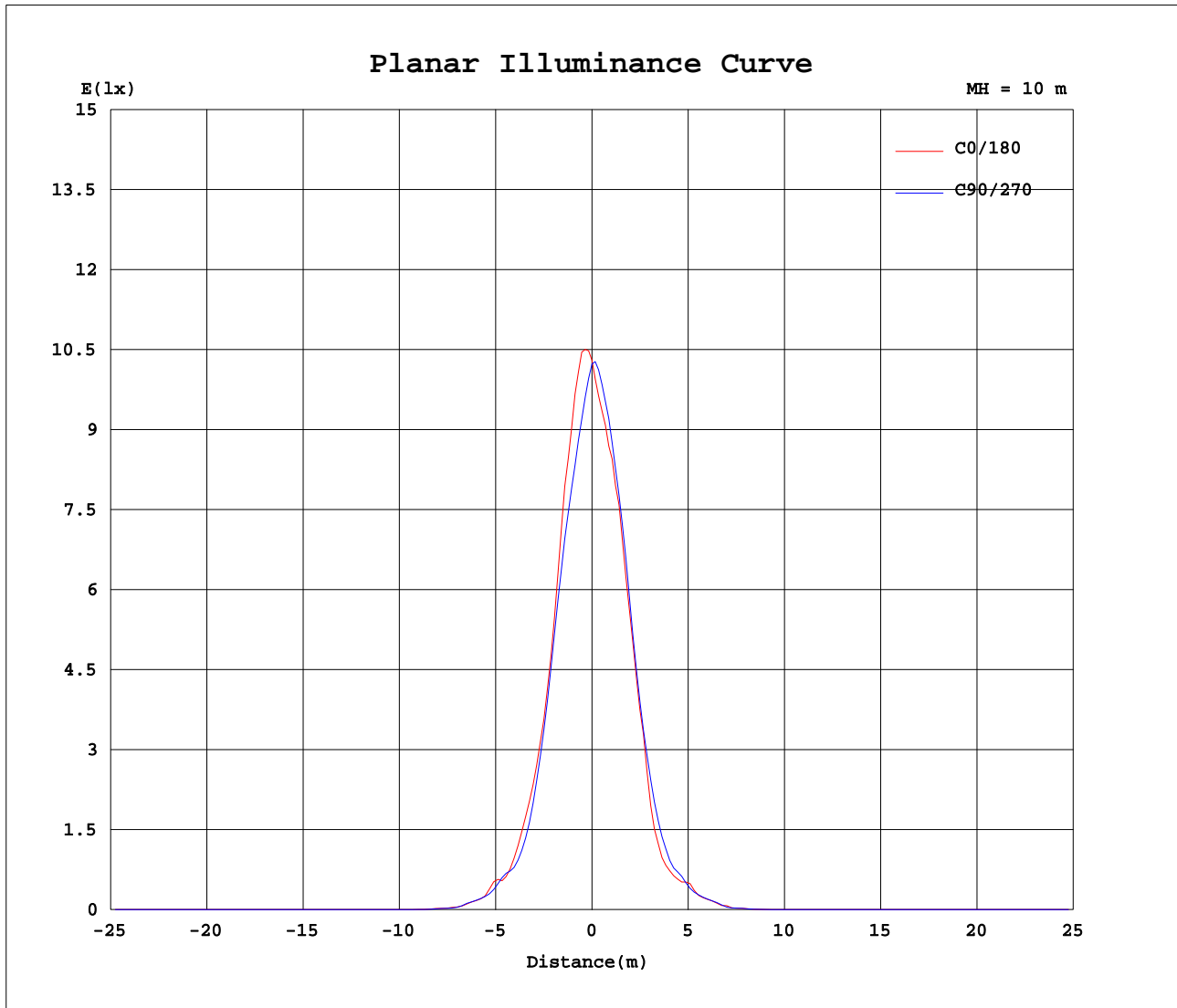
Test:U:220.7V I:0.0202A P:3.167W PF:0.7094 Lamp Flux:219.4x1 lm		
NAME: FF1-2W-840-24D Specular	TYPE:Downlight	SERIAL No.:
SPEC.:4000K	DIM.: L45mm*W45mm*H60mm	
MFR.: NEKO LIGHTING AG		



C Range: 0 - 360DEG  
 C Interval: 15.0DEG  
 Test Speed: HIGH  
 Temperature:25.3DEG  
 Operators:Meng Yongjian  
 Test Date:2017-06-14

γ Range: 0 - 90DEG  
 γ Interval: 1.0DEG  
 Test System:EVERFINE GO-2000B\_V1 SYSTEM V2.0.288  
 Humidity:52%  
 Test Distance:5.850m [K=1.0000]  
 Remarks:

Planar Illuminance Curve



C Range: 0 - 360DEG  
 C Interval: 15.0DEG  
 Test Speed: HIGH  
 Temperature: 25.3DEG  
 Operators: Meng Yongjian  
 Test Date: 2017-06-14

$\gamma$  Range: 0 - 90DEG  
 $\gamma$  Interval: 1.0DEG  
 Test System: EVERFINE GO-2000B\_V1 SYSTEM V2.0.288  
 Humidity: 52%  
 Test Distance: 5.850m [K=1.0000]  
 Remarks:

LUMINOUS DISTRIBUTION INTENSITY DATA

Test:U:220.7V I:0.0202A P:3.167W PF:0.7094 Lamp Flux:219.4x1 lm		
NAME: FF1-2W-840-24D Specular	TYPE:Downlight	SERIAL No.:
SPEC.:4000K	DIM.: L45mm*W45mm*H60mm	
MFR.: NEKO LIGHTING AG		

Table--1

UNIT: cd

C(DEG) γ (DEG)	0	15	30	45	60	75	90	105	120	135	150	165	180	195	210	225	240	255	270
0	1030	1027	1027	1025	1024	1025	1023	1025	1023	1026	1024	1027	1030	1027	1027	1025	1024	1025	1023
5	978	963	929	907	881	860	843	839	842	851	859	866	879	882	891	895	903	907	931
10	659	662	650	643	618	616	607	606	618	624	627	640	653	655	678	669	689	684	690
15	350	352	341	338	330	326	320	326	322	331	326	335	365	352	376	358	372	366	373
20	177	176	167	162	151	146	134	132	123	120	116	115	118	120	134	138	150	155	165
25	72.9	84.8	89.9	88.5	91.6	89.0	80.8	81.6	89.4	85.4	83.2	80.9	69.7	78.8	80.7	82.6	81.4	82.9	84.2
30	31.3	32.4	31.9	32.4	31.5	32.4	32.3	33.1	32.8	33.6	33.2	33.8	35.0	35.1	36.2	36.7	37.2	36.0	36.1
35	9.39	9.95	9.35	9.63	9.13	8.78	8.42	8.88	7.87	8.63	7.89	10.1	13.7	9.35	9.16	9.09	8.88	8.42	8.78
40	2.77	3.10	3.16	2.86	2.42	2.32	2.15	2.05	1.98	2.10	1.93	1.96	2.09	1.87	2.02	2.04	2.19	2.06	2.27
45	0.15	0.13	0.14	0.14	0.15	0.14	0.15	0.13	0.13	0.11	0.12	0.09	0.10	0.11	0.10	0.14	0.14	0.16	0.15
50	0.07	0.05	0.07	0.06	0.09	0.07	0.09	0.07	0.08	0.06	0.07	0.05	0.04	0.07	0.05	0.08	0.06	0.08	0.06
55	0.06	0.04	0.07	0.04	0.07	0.05	0.07	0.05	0.07	0.04	0.06	0.04	0.03	0.05	0.03	0.06	0.04	0.06	0.03
60	0.05	0.03	0.05	0.04	0.06	0.04	0.06	0.04	0.06	0.03	0.05	0.03	0.04	0.04	0.03	0.05	0.03	0.04	0.03
65	0.04	0.03	0.05	0.03	0.05	0.03	0.05	0.03	0.04	0.03	0.04	0.03	0.03	0.04	0.02	0.04	0.03	0.04	0.03
70	0.04	0.02	0.03	0.02	0.04	0.02	0.04	0.02	0.03	0.02	0.03	0.02	0.02	0.03	0.01	0.03	0.01	0.03	0.02
75	0.03	0.00	0.02	0.01	0.03	0.01	0.02	0.01	0.02	0.00	0.02	0.00	0.00	0.02	0.00	0.02	0.00	0.02	0.00
80	0.02	0.00	0.02	0.00	0.02	0.00	0.02	0.00	0.02	0.00	0.02	0.00	0.00	0.01	0.00	0.01	0.00	0.01	0.00
85	0.01	0.00	0.01	0.00	0.01	0.00	0.01	0.00	0.01	0.00	0.01	0.00	0.00	0.01	0.00	0.01	0.00	0.01	0.00
90	0.00	0.00	0.00	0.00	0.00	0.00	0.00	0.00	0.00	0.00	0.00	0.00	0.00	0.00	0.00	0.00	0.00	0.00	0.00

C Range: 0 - 360DEG  
 C Interval: 15.0DEG  
 Test Speed: HIGH  
 Temperature:25.3DEG  
 Operators:Meng Yongjian  
 Test Date:2017-06-14

γ Range: 0 - 90DEG  
 γ Interval: 1.0DEG  
 Test System:EVERFINE GO-2000B\_V1 SYSTEM V2.0.288  
 Humidity:52%  
 Test Distance:5.850m [K=1.0000]  
 Remarks:

LUMINOUS DISTRIBUTION INTENSITY DATA

Test:U:220.7V I:0.0202A P:3.167W PF:0.7094 Lamp Flux:219.4x1 lm		
NAME: FF1-2W-840-24D Specular	TYPE:Downlight	SERIAL No.:
SPEC.:4000K	DIM.: L45mm*W45mm*H60mm	
MFR.: NEKO LIGHTING AG		

Table--2

UNIT: cd

C(DEG) γ (DEG)	285	300	315	330	345														
0	1025	1023	1026	1024	1027														
5	941	967	972	995	987														
10	674	678	668	678	671														
15	365	371	363	368	361														
20	171	183	186	191	184														
25	89.0	82.8	84.7	95.2	93.7														
30	35.2	35.5	34.4	33.2	31.8														
35	8.58	8.79	8.70	9.41	10.2														
40	2.29	2.59	2.50	2.97	2.80														
45	0.16	0.15	0.15	0.14	0.15														
50	0.08	0.05	0.07	0.05	0.07														
55	0.06	0.04	0.05	0.03	0.05														
60	0.05	0.03	0.04	0.03	0.05														
65	0.04	0.03	0.04	0.03	0.04														
70	0.03	0.01	0.03	0.02	0.03														
75	0.02	0.00	0.02	0.00	0.02														
80	0.01	0.00	0.01	0.00	0.02														
85	0.01	0.00	0.01	0.00	0.01														
90	0.00	0.00	0.00	0.00	0.00														

C Range: 0 - 360DEG  
 C Interval: 15.0DEG  
 Test Speed: HIGH  
 Temperature:25.3DEG  
 Operators:Meng Yongjian  
 Test Date:2017-06-14

γ Range: 0 - 90DEG  
 γ Interval: 1.0DEG  
 Test System:EVERFINE GO-2000B\_V1 SYSTEM V2.0.288  
 Humidity:52%  
 Test Distance:5.850m [K=1.0000]  
 Remarks:

Photometric Data Table [cd]

G/C	0.0	15.0	30.0	45.0	60.0	75.0	90.0	105.0	120.0	135.0
0.0	1030	1027	1027	1025	1024	1025	1023	1025	1023	1026
3.0	1050	1025	999.3	990.9	956.6	941.6	923.5	919.3	913.2	918.0
6.0	918.9	911.5	878.0	864.3	837.3	819.3	803.9	805.2	807.7	819.7
9.0	742.7	739.4	723.7	716.5	680.4	675.4	662.5	681.2	666.0	684.5
12.0	509.4	515.9	497.2	500.7	484.0	495.2	486.0	488.7	502.3	510.4
15.0	349.9	351.6	340.8	338.3	329.7	326.4	320.3	326.4	321.9	331.3
18.0	236.6	236.0	225.7	221.4	208.6	203.7	190.4	186.5	176.2	175.0
21.0	147.5	147.8	138.9	137.0	126.7	121.7	114.3	110.8	105.6	103.8
24.0	81.92	97.01	93.92	93.08	96.82	92.32	89.76	87.22	90.22	85.07
27.0	74.24	68.02	62.62	63.30	59.26	54.78	53.76	54.49	57.46	55.52
30.0	31.33	32.36	31.85	32.40	31.49	32.43	32.26	33.07	32.78	33.64
33.0	18.45	18.98	19.05	18.52	17.74	19.21	20.23	20.85	19.29	20.08
36.0	7.978	7.721	7.864	7.618	6.573	6.571	6.148	6.367	6.347	6.672
39.0	4.909	4.907	4.372	4.224	4.149	3.961	3.363	3.420	3.237	3.448
42.0	0.7397	0.7679	0.7622	0.7809	0.7660	0.7764	0.7106	0.7132	0.6731	0.6780
45.0	0.1454	0.1329	0.1433	0.1395	0.1541	0.1396	0.1496	0.1265	0.1342	0.1069
48.0	0.0744	0.0633	0.0831	0.0678	0.0963	0.0743	0.0984	0.0743	0.0897	0.0634
51.0	0.0678	0.0459	0.0743	0.0611	0.0810	0.0634	0.0831	0.0612	0.0809	0.0546
54.0	0.0612	0.0394	0.0678	0.0481	0.0722	0.0546	0.0744	0.0503	0.0722	0.0415
57.0	0.0525	0.0350	0.0612	0.0415	0.0656	0.0415	0.0656	0.0437	0.0634	0.0393
60.0	0.0481	0.0350	0.0525	0.0372	0.0569	0.0372	0.0612	0.0393	0.0568	0.0328
63.0	0.0459	0.0306	0.0482	0.0350	0.0503	0.0350	0.0547	0.0350	0.0481	0.0328
66.0	0.0415	0.0262	0.0438	0.0306	0.0459	0.0328	0.0481	0.0306	0.0416	0.0284
69.0	0.0415	0.0175	0.0328	0.0240	0.0394	0.0284	0.0394	0.0284	0.0350	0.0240
72.0	0.0415	0.0109	0.0306	0.0175	0.0328	0.0197	0.0350	0.0175	0.0328	0.0152
75.0	0.0263	0.0044	0.0241	0.0087	0.0263	0.0066	0.0241	0.0066	0.0219	0.0044
78.0	0.0240	0.0044	0.0175	0.0022	0.0197	0.0022	0.0219	0.0044	0.0197	0.0022
81.0	0.0153	0.0044	0.0131	0.0022	0.0153	0.0022	0.0153	0.0044	0.0132	0.0022
84.0	0.0131	0.0044	0.0109	0.0022	0.0109	0.0022	0.0066	0.0044	0.0110	0.0022
87.0	0.0066	0.0044	0.0066	0.0022	0.0066	0.0022	0.0066	0.0044	0.0066	0.0022
90.0	0.0044	0.0044	0.0044	0.0022	0.0044	0.0044	0.0044	0.0044	0.0022	0.0022
G/C	150.0	165.0	180.0	195.0	210.0	225.0	240.0	255.0	270.0	285.0
0.0	1024	1027	1030	1027	1024	1025	1024	1023	1023	1025
3.0	920.6	927.7	938.6	943.4	951.5	954.3	962.9	971.2	988.4	1004
6.0	820.2	838.4	859.2	852.0	861.7	862.9	871.8	877.5	889.9	901.2
9.0	683.9	710.9	719.0	729.6	739.0	733.5	739.9	740.3	748.5	740.8
12.0	512.3	515.6	536.7	535.4	551.9	545.7	555.6	544.2	552.2	539.4
15.0	326.4	334.6	365.2	352.5	376.2	357.7	371.9	366.5	373.4	364.6
18.0	167.2	170.7	175.8	179.6	192.9	197.7	214.7	221.0	234.9	236.9
21.0	100.3	99.73	102.4	103.1	110.1	115.9	128.6	129.8	140.4	142.5
24.0	82.84	86.26	75.12	84.67	84.27	90.75	87.63	91.19	93.06	99.86
27.0	53.69	59.44	69.13	57.33	59.51	59.52	58.34	56.16	56.86	54.91
30.0	33.23	33.78	35.01	35.09	36.20	36.69	37.20	35.96	36.13	35.19
33.0	21.05	20.80	20.63	23.46	23.61	23.95	21.96	22.28	22.67	21.48
36.0	6.484	6.346	6.428	6.285	6.475	6.518	6.729	6.543	6.648	6.700
39.0	3.195	3.126	3.619	3.280	3.526	3.191	3.424	3.100	3.466	3.538
42.0	0.6313	0.6624	0.6946	0.6860	0.7119	0.6824	0.7384	0.7057	0.7493	0.7334
45.0	0.1167	0.0894	0.0958	0.1099	0.1024	0.1383	0.1373	0.1603	0.1481	0.1625
48.0	0.0744	0.0502	0.0524	0.0722	0.0611	0.0897	0.0721	0.0941	0.0677	0.0875
51.0	0.0678	0.0394	0.0415	0.0634	0.0437	0.0700	0.0567	0.0744	0.0524	0.0700
54.0	0.0612	0.0372	0.0371	0.0547	0.0371	0.0613	0.0394	0.0613	0.0393	0.0591
57.0	0.0525	0.0350	0.0350	0.0525	0.0328	0.0525	0.0350	0.0525	0.0350	0.0547
60.0	0.0481	0.0328	0.0371	0.0438	0.0328	0.0459	0.0328	0.0438	0.0328	0.0459
63.0	0.0416	0.0306	0.0306	0.0415	0.0241	0.0394	0.0284	0.0416	0.0306	0.0394
66.0	0.0372	0.0240	0.0284	0.0350	0.0197	0.0350	0.0284	0.0350	0.0262	0.0350
69.0	0.0307	0.0175	0.0196	0.0284	0.0153	0.0306	0.0196	0.0328	0.0153	0.0306
72.0	0.0263	0.0109	0.0131	0.0284	0.0087	0.0284	0.0043	0.0263	0.0087	0.0263
75.0	0.0241	0.0022	0.0044	0.0175	0	0.0197	0.0022	0.0197	0.0022	0.0197
78.0	0.0175	0.0022	0.0022	0.0153	0	0.0153	0.0022	0.0153	0.0022	0.0175
81.0	0.0131	0.0022	0.0022	0.0109	0	0.0109	0.0022	0.0109	0.0022	0.0109
84.0	0.0109	0.0022	0.0022	0.0066	0	0.0087	0.0022	0.0087	0.0022	0.0087
87.0	0.0066	0.0022	0.0022	0.0044	0	0.0044	0.0022	0.0044	0.0022	0.0044
90.0	0.0044	0.0022	0.0022	0	0	0.0022	0.0022	0.0022	0.0022	0.0022
G/C	300.0	315.0	330.0	345.0						
0.0	1023	1026	1024	1027						
3.0	1015	1036	1040	1045						
6.0	926.5	933.8	948.6	944.6						
9.0	746.1	743.4	755.4	756.2						
12.0	537.9	537.9	532.9	523.5						
15.0	370.9	363.4	367.6	361.1						
18.0	248.1	248.4	253.7	244.2						
21.0	153.8	155.1	158.2	151.4						

C Range: 0 - 360DEG

C Interval: 15.0DEG

Test Speed: HIGH

Temperature: 25.3DEG

Operators: Meng Yongjian

Test Date: 2017-06-14

γ Range: 0 - 90DEG

γ Interval: 1.0DEG

Test System: EVERFINE GO-2000B\_V1 SYSTEM V2.0.288

Humidity: 52%

Test Distance: 5.850m [K=1.0000]

Remarks:

Photometric Data Table [cd]

24.0	93.34	98.60	97.36	93.78
27.0	55.49	54.55	55.30	59.99
30.0	35.53	34.35	33.18	31.76
33.0	20.87	20.16	20.36	19.03
36.0	6.954	6.851	7.033	6.813
39.0	4.468	4.494	5.343	4.920
42.0	0.8251	0.7690	0.7713	0.7494
45.0	0.1480	0.1494	0.1393	0.1496
48.0	0.0634	0.0788	0.0567	0.0744
51.0	0.0459	0.0656	0.0393	0.0678
54.0	0.0372	0.0569	0.0393	0.0569
57.0	0.0350	0.0481	0.0328	0.0525
60.0	0.0328	0.0437	0.0328	0.0481
63.0	0.0306	0.0394	0.0284	0.0394
66.0	0.0240	0.0350	0.0240	0.0350
69.0	0.0174	0.0306	0.0175	0.0328
72.0	0.0022	0.0263	0.0108	0.0263
75.0	0	0.0175	0	0.0219
78.0	0	0.0153	0	0.0175
81.0	0	0.0109	0	0.0131
84.0	0	0.0066	0	0.0131
87.0	0	0.0044	0	0.0066
90.0	0	0.0022	0	0.0022

C Range: 0 - 360DEG  
 C Interval: 15.0DEG  
 Test Speed: HIGH  
 Temperature: 25.3DEG  
 Operators: Meng Yongjian  
 Test Date: 2017-06-14

γ Range: 0 - 90DEG  
 γ Interval: 1.0DEG  
 Test System: EVERFINE GO-2000B\_V1 SYSTEM V2.0.288  
 Humidity: 52%  
 Test Distance: 5.850m [K=1.0000]  
 Remarks: