

LED Downlight FUSION Series FF1-2W-830-24D Specular



Light Output Ratio:	100.0%	
Luminaire Power:	3.21 W	
SHR Nominal:	0.00	Calculated using the TM5
SHR Maximum:	1.00	fine grid method.

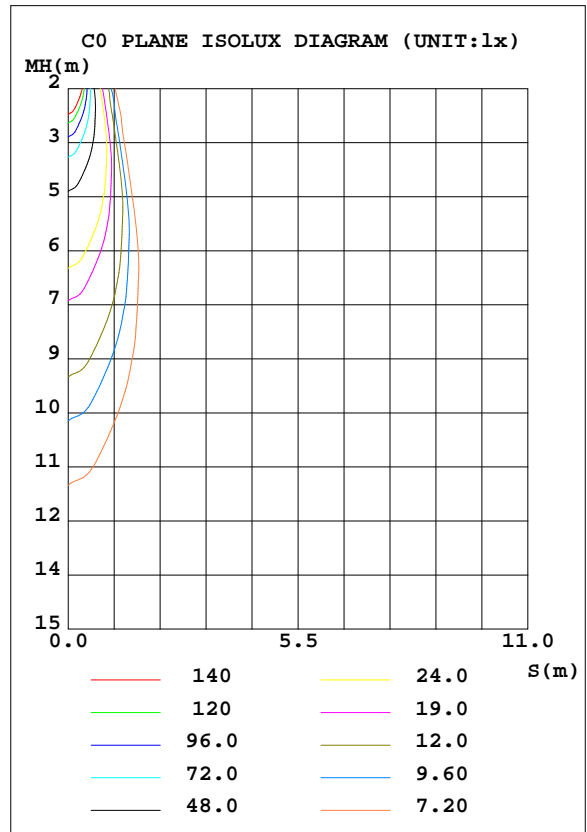
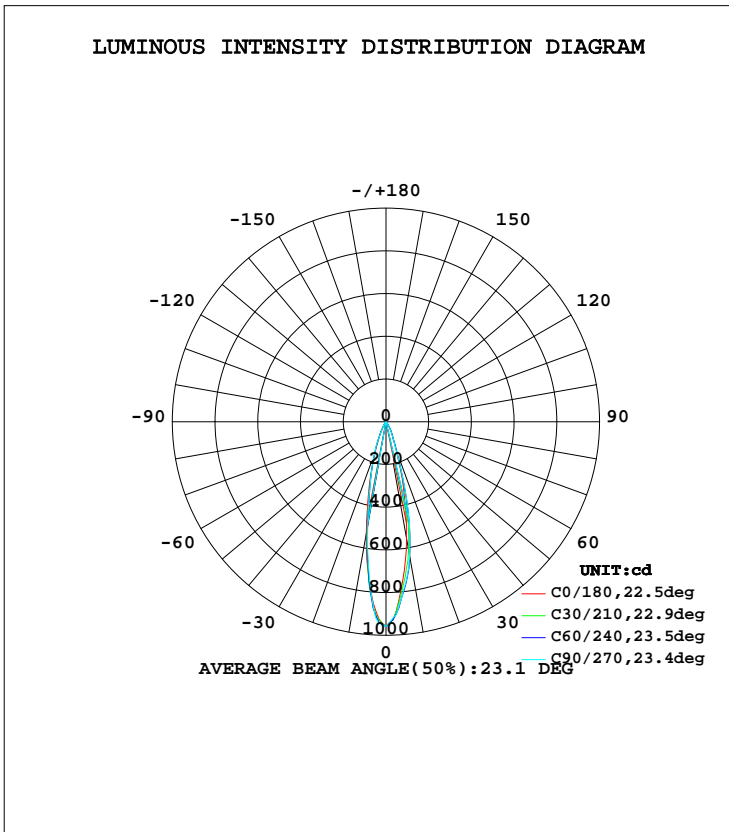
C Range: 0 - 360DEG  
C Interval: 15.0DEG  
Test Speed: HIGH  
Temperature: 25.3DEG  
Operators: Cao Chengpei  
Test Date: 2016-06-25

$\gamma$  Range: 0 - 90DEG  
 $\gamma$  Interval: 1.0DEG  
Test System: EVERFINE GO-2000B\_V1 SYSTEM V2.0.288  
Humidity: 53.0%  
Test Distance: 5.850m [K=1.0000]  
Remarks:

**LUMINAIRE PHOTOMETRIC TEST REPORT**

Test:U:220.6V I:0.0203A P:3.210W PF:0.7168 Lamp Flux:201.631x1 lm		
NAME: FF1-2W-830-24D Specular	TYPE:Downlight	SERIAL No.:
SPEC.:3000K	DIM.: L45mm*W45mm*H60mm	
MFR.: NEKO LIGHTING AG		

DATA OF LAMP		PHOTOMETRIC DATA				Eff: 62.81 lm/W
MODEL	CREE-3000K	I <sub>max</sub> (cd)	960.8	S/MH(C0/180)	0.37	
NOMINAL POWER(W)	3.0	LOR(%)	100.0	S/MH(C90/270)	0.35	
RATED VOLTAGE(V)	220	TOTAL FLUX(lm)	201.63	η UP, DN(C0-180)	0.0, 52.4	
NOMINAL FLUX(lm)	201.631	CIE CLASS	DIRECT	η UP, DN(C180-360)	0.0, 47.6	
LAMPS INSIDE	1	η up(%)	0.0	CIBSE SHR NOM	0.00	
TEST VOLTAGE(V)	220	η down(%)	100.0	CIBSE SHR MAX	1.00	



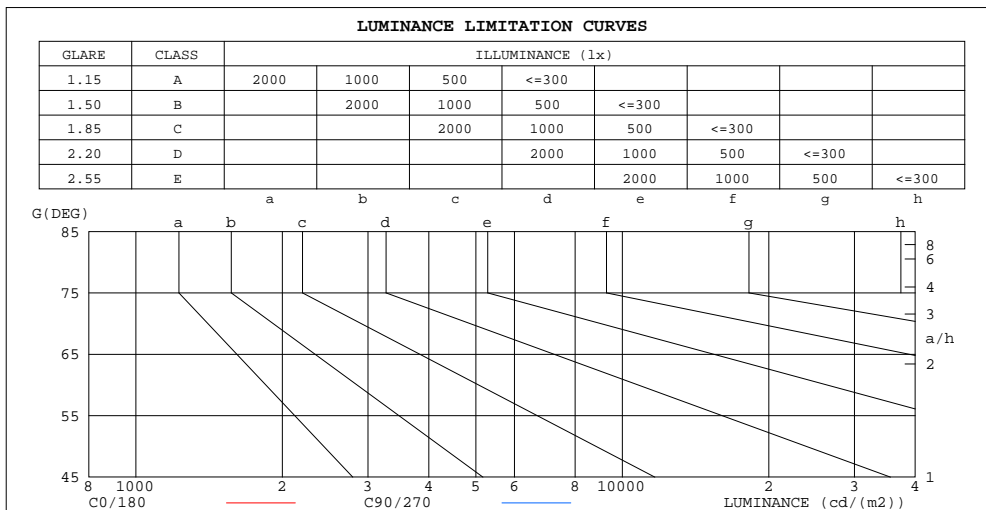
C Range: 0 - 360DEG  
C Interval: 15.0DEG  
Test Speed: HIGH  
Temperature:25.3DEG  
Operators:Cao Chengpei  
Test Date:2016-06-25

γ Range: 0 - 90DEG  
γ Interval: 1.0DEG  
Test System:EVERFINE GO-2000B\_V1 SYSTEM V2.0.288  
Humidity:53.0%  
Test Distance:5.850m [K=1.0000]  
Remarks:

**ZONAL FLUX DIAGRAM  
AND LUMINANCE LIMITATION CURVES**

**ZONAL FLUX DIAGRAM:**

$\gamma$	C0	C45	C90	C135	C180	C225	C270	C315	$\gamma$	$\Phi$ zone	$\Phi$ total	$\Phi$ lum, lamp
10	556.2	637.5	636.0	586.1	532.6	491.9	494.3	511.0	0- 10	69.22	69.22	34.3,34.3
20	136.9	151.8	139.2	145.8	142.9	153.1	154.2	143.6	10- 20	86.28	155.5	77.1,77.1
30	40.42	42.28	39.09	41.69	34.74	29.58	29.04	32.06	20- 30	34.50	190.0	94.2,94.2
40	4.672	5.644	3.920	5.164	4.328	4.109	5.033	4.865	30- 40	9.761	199.8	99.1,99.1
50	0.7996	0.6577	0.5374	0.6151	0.7214	0.7548	0.7129	0.7525	40- 50	1.140	200.9	99.6,99.6
60	0.3497	0.2725	0.2516	0.2533	0.2831	0.3070	0.2979	0.3049	50- 60	0.4133	201.3	99.8,99.8
70	0.1450	0.1085	0.1173	0.1022	0.1276	0.1470	0.1405	0.1237	60- 70	0.1922	201.5	99.9,99.9
80	0.0661	0.0149	0.0490	0.0170	0.0467	0.0363	0.0298	0.0363	70- 80	0.0866	201.6	100,100
90	0.0149	0.0149	0.0149	0.0149	0.0149	0.0128	0.0149	0.0128	80- 90	0.0286	201.6	100,100
100									90-100			
110									100-110			
120									110-120			
130									120-130			
140									130-140			
150									140-150			
160									150-160			
170									160-170			
180									170-180			
DEG	LUMINOUS INTENSITY:cd									UNIT:lm		



LUMINANCE cd/(m2)		
G(DEG)	C0/180	C90/270
85	158	205
80	188	139
75	195	163
70	209	169
65	259	204
60	345	248
55	464	316
50	614	413
45	909	618

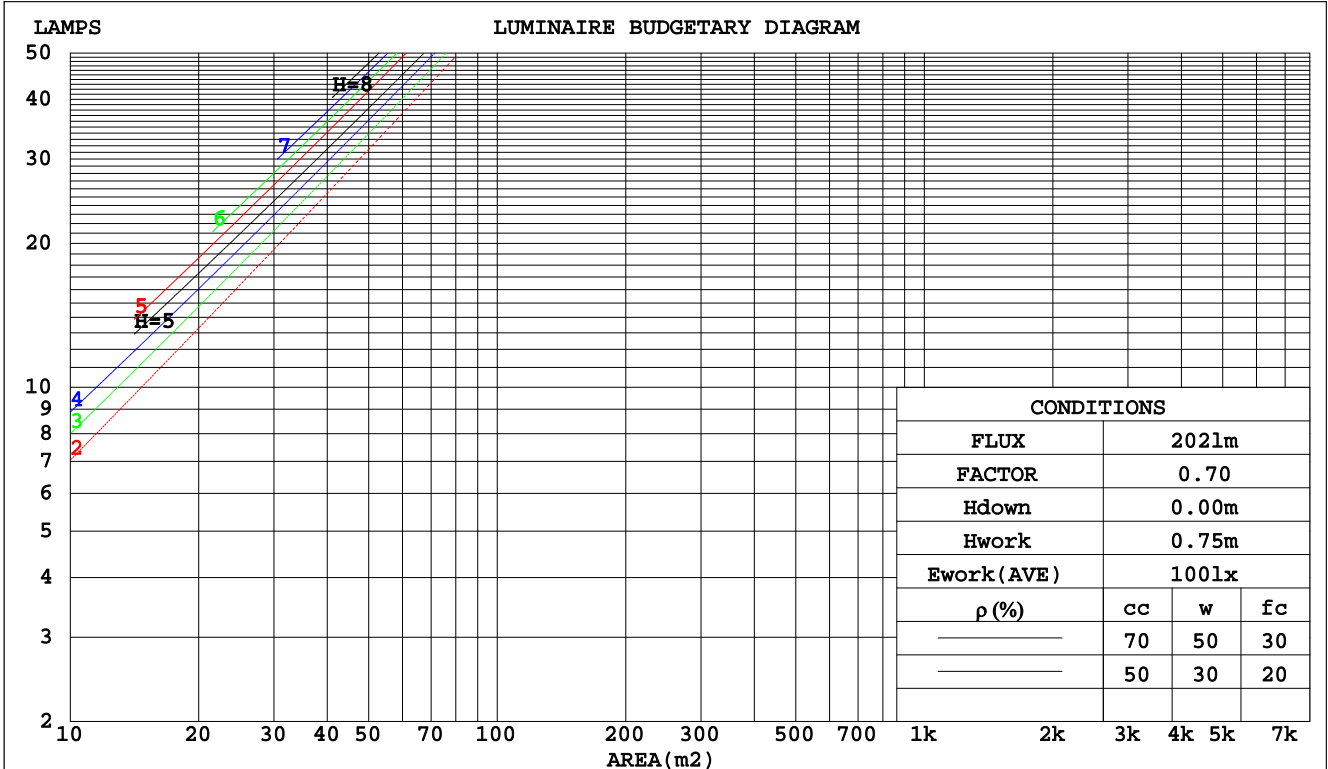
C Range: 0 - 360DEG  
C Interval: 15.0DEG  
Test Speed: HIGH  
Temperature:25.3DEG  
Operators:Cao Chengpei  
Test Date:2016-06-25

$\gamma$  Range: 0 - 90DEG  
 $\gamma$  Interval: 1.0DEG  
Test System:EVERFINE GO-2000B\_V1 SYSTEM V2.0.288  
Humidity:53.0%  
Test Distance:5.850m [K=1.0000]  
Remarks:

**CU AND LUMINAIRE BUDGETARY ESTIMATE DIAGRAM**

Test:U:220.6V I:0.0203A P:3.210W PF:0.7168 Lamp Flux:201.63lx1 lm		
NAME: FF1-2W-830-24D Specular	TYPE:Downlight	SERIAL No.:
SPEC.:3000K	DIM.: L45mm*W45mm*H60mm	
MFR.: NEKO LIGHTING AG		

pcc	80%			70%			50%			30%			10%			0
	50%	30%	10%	50%	30%	10%	50%	30%	10%	50%	30%	10%	50%	30%	10%	0
pw																
pfc																
RCR	RCR:Room Cavity Ratio															
	Coefficients of Utilization(CU)															
0.0	1.19	1.19	1.19	1.16	1.16	1.16	1.11	1.11	1.11	1.06	1.06	1.06	1.02	1.02	1.02	1.00
1.0	1.13	1.11	1.09	1.11	1.09	1.07	1.07	1.05	1.04	1.03	1.02	1.01	.00	.99	.98	.96
2.0	1.07	1.04	1.02	1.06	1.03	1.01	1.03	1.00	.99	.00	.98	.97	.97	.96	.95	.93
3.0	1.03	.99	.96	1.01	.98	.95	.99	.96	.94	.97	.94	.93	.95	.93	.91	.90
4.0	.99	.95	.92	.98	.94	.91	.96	.93	.90	.94	.91	.89	.92	.90	.88	.87
5.0	.95	.91	.88	.94	.90	.87	.92	.89	.87	.91	.88	.86	.90	.87	.85	.84
6.0	.92	.87	.84	.91	.87	.84	.90	.86	.84	.88	.85	.83	.87	.85	.82	.81
7.0	.89	.84	.81	.88	.84	.81	.87	.83	.81	.86	.83	.80	.85	.82	.80	.79
8.0	.86	.82	.79	.85	.81	.78	.84	.81	.78	.83	.80	.78	.83	.80	.78	.77
9.0	.83	.79	.76	.83	.79	.76	.82	.78	.76	.81	.78	.76	.80	.78	.75	.74
10.0	.81	.77	.74	.80	.76	.74	.80	.76	.74	.79	.76	.74	.78	.75	.73	.72



C Range: 0 - 360DEG  
 C Interval: 15.0DEG  
 Test Speed: HIGH  
 Temperature:25.3DEG  
 Operators:Cao Chengpei  
 Test Date:2016-06-25

γ Range: 0 - 90DEG  
 γ Interval: 1.0DEG  
 Test System:EVERFINE GO-2000B\_V1 SYSTEM V2.0.288  
 Humidity:53.0%  
 Test Distance:5.850m [K=1.0000]  
 Remarks:

WEC AND CCEC

Test:U:220.6V I:0.0203A P:3.210W PF:0.7168 Lamp Flux:201.631x1 lm		
NAME: FF1-2W-830-24D Specular	TYPE:Downlight	SERIAL No.:
SPEC.:3000K	DIM.: L45mm*W45mm*H60mm	
MFR.: NEKO LIGHTING AG		

ρcc	80%			70%			50%			30%			10%			0
ρw	50%	30%	10%	50%	30%	10%	50%	30%	10%	50%	30%	10%	50%	30%	10%	0
ρfc	20%			20%			20%			20%			20%			0
RCR	RCR:Room Cavity Ratio						Wall Exitance Coefficients(WEC)									
0.0																
1.0	.138	.079	.025	.132	.075	.024	.119	.068	.022	.108	.062	.020	.097	.056	.018	
2.0	.128	.070	.022	.123	.068	.021	.113	.063	.019	.103	.058	.018	.095	.053	.017	
3.0	.120	.064	.019	.115	.062	.019	.107	.058	.018	.099	.054	.017	.092	.051	.016	
4.0	.112	.058	.017	.109	.057	.017	.101	.054	.016	.095	.051	.015	.089	.048	.015	
5.0	.106	.054	.016	.103	.053	.015	.097	.050	.015	.091	.048	.014	.086	.046	.014	
6.0	.101	.050	.014	.098	.049	.014	.092	.047	.014	.087	.045	.013	.083	.044	.013	
7.0	.096	.047	.013	.093	.046	.013	.089	.045	.013	.084	.043	.013	.080	.042	.012	
8.0	.091	.045	.013	.089	.044	.012	.085	.042	.012	.081	.041	.012	.078	.040	.012	
9.0	.087	.042	.012	.085	.042	.012	.082	.040	.011	.078	.039	.011	.075	.038	.011	
10.0	.084	.040	.011	.082	.040	.011	.079	.039	.011	.076	.038	.011	.073	.037	.011	

ρcc	80%			70%			50%			30%			10%			0
ρw	50%	30%	10%	50%	30%	10%	50%	30%	10%	50%	30%	10%	50%	30%	10%	0
ρfc	20%			20%			20%			20%			20%			0
RCR	RCR:Room Cavity Ratio						Ceiling Cavity Exitance Coefficients(CCEC)									
0.0	.190	.190	.190	.163	.163	.163	.111	.111	.111	.064	.064	.064	.020	.020	.020	
1.0	.168	.158	.148	.144	.135	.127	.099	.093	.088	.057	.054	.051	.018	.017	.017	
2.0	.150	.133	.118	.129	.114	.102	.088	.079	.071	.051	.046	.042	.016	.015	.014	
3.0	.136	.113	.096	.116	.098	.083	.080	.068	.058	.046	.040	.034	.015	.013	.011	
4.0	.123	.098	.079	.106	.085	.068	.073	.059	.048	.042	.035	.028	.014	.011	.009	
5.0	.113	.086	.066	.097	.074	.057	.067	.052	.040	.039	.030	.024	.012	.010	.008	
6.0	.104	.076	.055	.089	.066	.048	.062	.046	.034	.036	.027	.020	.012	.009	.007	
7.0	.096	.068	.047	.083	.059	.041	.057	.041	.029	.033	.024	.017	.011	.008	.006	
8.0	.090	.061	.041	.077	.053	.036	.054	.037	.025	.031	.022	.015	.010	.007	.005	
9.0	.084	.055	.035	.073	.048	.031	.050	.034	.022	.029	.020	.013	.010	.007	.004	
10.0	.080	.050	.031	.069	.044	.027	.048	.031	.019	.028	.018	.012	.009	.006	.004	

C Range: 0 - 360DEG  
 C Interval: 15.0DEG  
 Test Speed: HIGH  
 Temperature:25.3DEG  
 Operators:Cao Chengpei  
 Test Date:2016-06-25

γ Range: 0 - 90DEG  
 γ Interval: 1.0DEG  
 Test System:EVERFINE GO-2000B\_V1 SYSTEM V2.0.288  
 Humidity:53.0%  
 Test Distance:5.850m [K=1.0000]  
 Remarks:

UGR(Unified Glare Rating) Table

Test:U:220.6V I:0.0203A P:3.210W PF:0.7168 Lamp Flux:201.63lx1 lm		
NAME: FF1-2W-830-24D Specular	TYPE:Downlight	SERIAL No.:
SPEC.:3000K	DIM.: L45mm*W45mm*H60mm	
MFR.: NEKO LIGHTING AG		

ceiling/cavity	0.7	0.7	0.5	0.5	0.3	0.7	0.7	0.5	0.5	0.3
walls	0.5	0.3	0.5	0.3	0.3	0.5	0.3	0.5	0.3	0.3
working plane	0.2	0.2	0.2	0.2	0.2	0.2	0.2	0.2	0.2	0.2
Room dimensions	Viewed crosswise					Viewed endwise				
x = 2H y = 2H	7.0	7.6	7.2	7.8	7.9	5.7	6.3	5.9	6.5	6.6
3H	6.8	7.4	7.1	7.6	7.8	5.5	6.2	5.8	6.3	6.5
4H	6.8	7.3	7.0	7.5	7.8	5.5	6.1	5.7	6.3	6.5
6H	6.7	7.2	7.0	7.5	7.7	5.4	6.0	5.7	6.2	6.4
8H	6.6	7.2	6.9	7.4	7.7	5.4	5.9	5.7	6.1	6.4
12H	6.6	7.1	6.9	7.4	7.6	5.3	5.8	5.6	6.1	6.4
4H 2H	6.7	7.3	7.0	7.5	7.7	5.5	6.0	5.7	6.3	6.5
3H	6.6	7.1	6.9	7.4	7.6	5.3	5.8	5.6	6.1	6.4
4H	6.5	7.0	6.8	7.3	7.6	5.2	5.7	5.6	6.0	6.3
6H	6.4	6.8	6.8	7.2	7.5	5.2	5.6	5.5	5.9	6.2
8H	6.4	6.8	6.8	7.1	7.5	5.1	5.5	5.5	5.9	6.2
12H	6.3	6.7	6.7	7.1	7.4	5.1	5.4	5.5	5.8	6.2
8H 4H	6.4	6.8	6.7	7.1	7.5	5.1	5.5	5.5	5.8	6.2
6H	6.3	6.6	6.7	7.0	7.4	5.0	5.3	5.4	5.7	6.1
8H	6.2	6.5	6.7	6.9	7.4	5.0	5.3	5.4	5.7	6.1
12H	6.2	6.4	6.6	6.8	7.3	5.0	5.2	5.4	5.6	6.1
12H 4H	6.3	6.7	6.7	7.0	7.4	5.0	5.4	5.4	5.8	6.1
6H	6.2	6.5	6.6	6.9	7.3	4.9	5.2	5.4	5.6	6.1
8H	6.1	6.4	6.6	6.8	7.3	4.9	5.2	5.4	5.6	6.1
Variations with the observer position at spacings:										
S = 1.0H	+ 3.1 / - 8.0					+ 3.4 / - 8.2				
1.5H	+ 5.7 / - 7.1					+ 6.0 / - 7.2				
2.0H	+ 3.1 / - 2.4					+ 2.1 / - 1.2				

CIE Pub.117 Corrected 201.6 lm Total Lamp Luminous Flux. (8log(F/F0) = -5.6)

C Range: 0 - 360DEG  
 C Interval: 15.0DEG  
 Test Speed: HIGH  
 Temperature:25.3DEG  
 Operators:Cao Chengpei  
 Test Date:2016-06-25

γ Range: 0 - 90DEG  
 γ Interval: 1.0DEG  
 Test System:EVERFINE GO-2000B\_V1 SYSTEM V2.0.288  
 Humidity:53.0%  
 Test Distance:5.850m [K=1.0000]  
 Remarks:

**UTILIZATION FACTORS TABLE**

Test:U:220.6V I:0.0203A P:3.210W PF:0.7168 Lamp Flux:201.63lx1 lm		
NAME: FF1-2W-830-24D Specular	TYPE:Downlight	SERIAL No.:
SPEC.:3000K	DIM.: L45mm*W45mm*H60mm	
MFR.: NEKO LIGHTING AG		

REFLECTANCE										
Ceiling	0.8	0.8	0.8	0.7	0.7	0.7	0.5	0.5	0.5	0
Walls	0.7	0.5	0.3	0.7	0.5	0.3	0.7	0.5	0.3	0
Working plane	0.2	0.2	0.2	0.2	0.2	0.2	0.2	0.2	0.2	0
ROOM INDEX	UTILIZATION FACTORS(PERCENT) $k(RI) \times RCR = 5$									
k = 0.60	91	85	82	91	85	82	90	85	82	78
0.80	98	93	89	97	92	89	96	92	89	86
1.00	102	97	93	101	96	93	99	96	93	89
1.25	105	101	98	104	100	97	102	99	96	92
1.50	108	103	100	106	103	100	104	101	99	95
2.00	110	106	103	108	105	102	106	103	101	96
2.50	111	108	105	110	107	104	107	104	102	97
3.00	113	110	107	111	108	106	108	106	104	98
4.00	115	112	110	113	110	109	109	107	106	99
5.00	116	114	112	114	112	110	110	108	107	100
ROOM INDEX	UF(total)									Direct
According to DIN EN 13032-2 2004			Suspended				SHRNOM = 1.25			

C Range: 0 - 360DEG  
C Interval: 15.0DEG  
Test Speed: HIGH  
Temperature:25.3DEG  
Operators:Cao Chengpei  
Test Date:2016-06-25

$\gamma$  Range: 0 - 90DEG  
 $\gamma$  Interval: 1.0DEG  
Test System:EVERFINE GO-2000B\_V1 SYSTEM V2.0.288  
Humidity:53.0%  
Test Distance:5.850m [K=1.0000]  
Remarks:

**ISOCANDELA DIAGRAM**

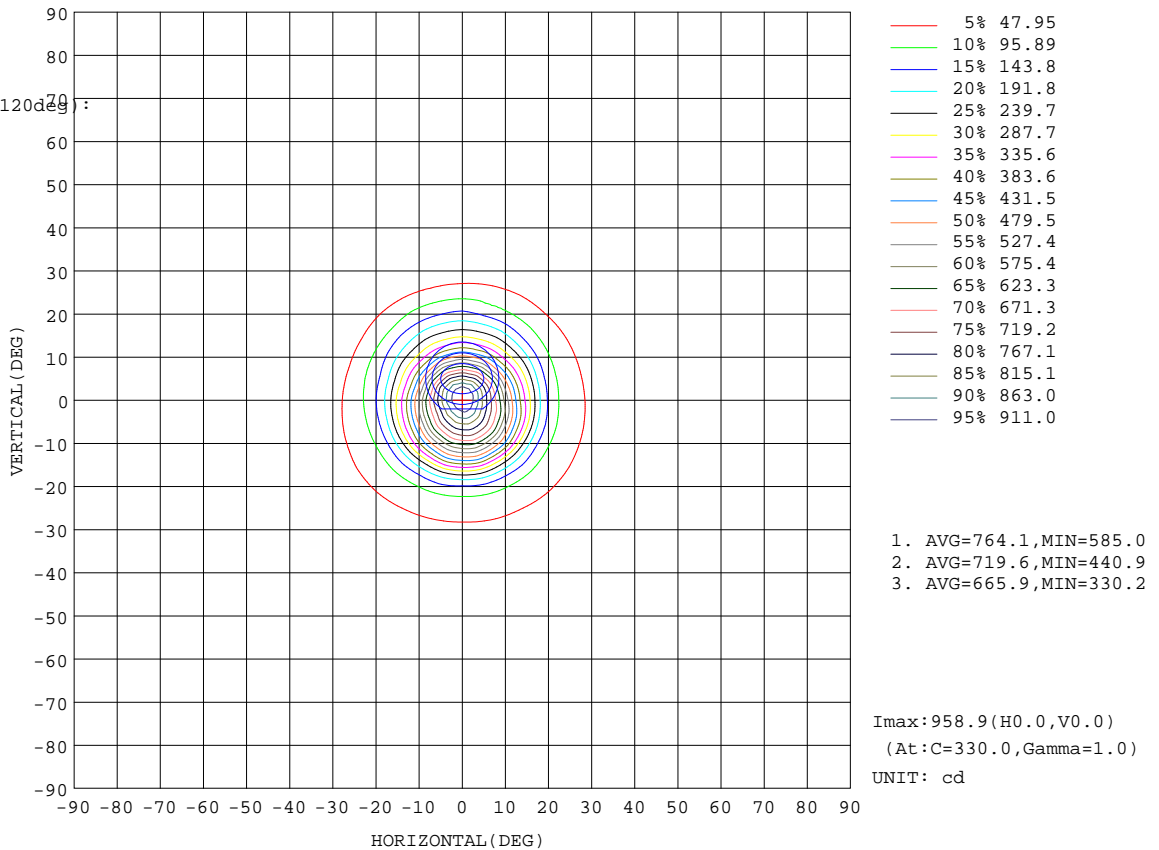
Test:U:220.6V I:0.0203A P:3.210W PF:0.7168 Lamp Flux:201.631x1 lm		
NAME: FF1-2W-830-24D Specular	TYPE:Downlight	SERIAL No.:
SPEC.:3000K	DIM.: L45mm*W45mm*H60mm	
MFR.: NEKO LIGHTING AG		

Conical surface Flux(90deg):

200.56 lm  
%lum = 99.5%  
%lamp = 99.5%

Conical surface Flux(120deg):

201.32 lm  
%lum = 99.8%  
%lamp = 99.8%



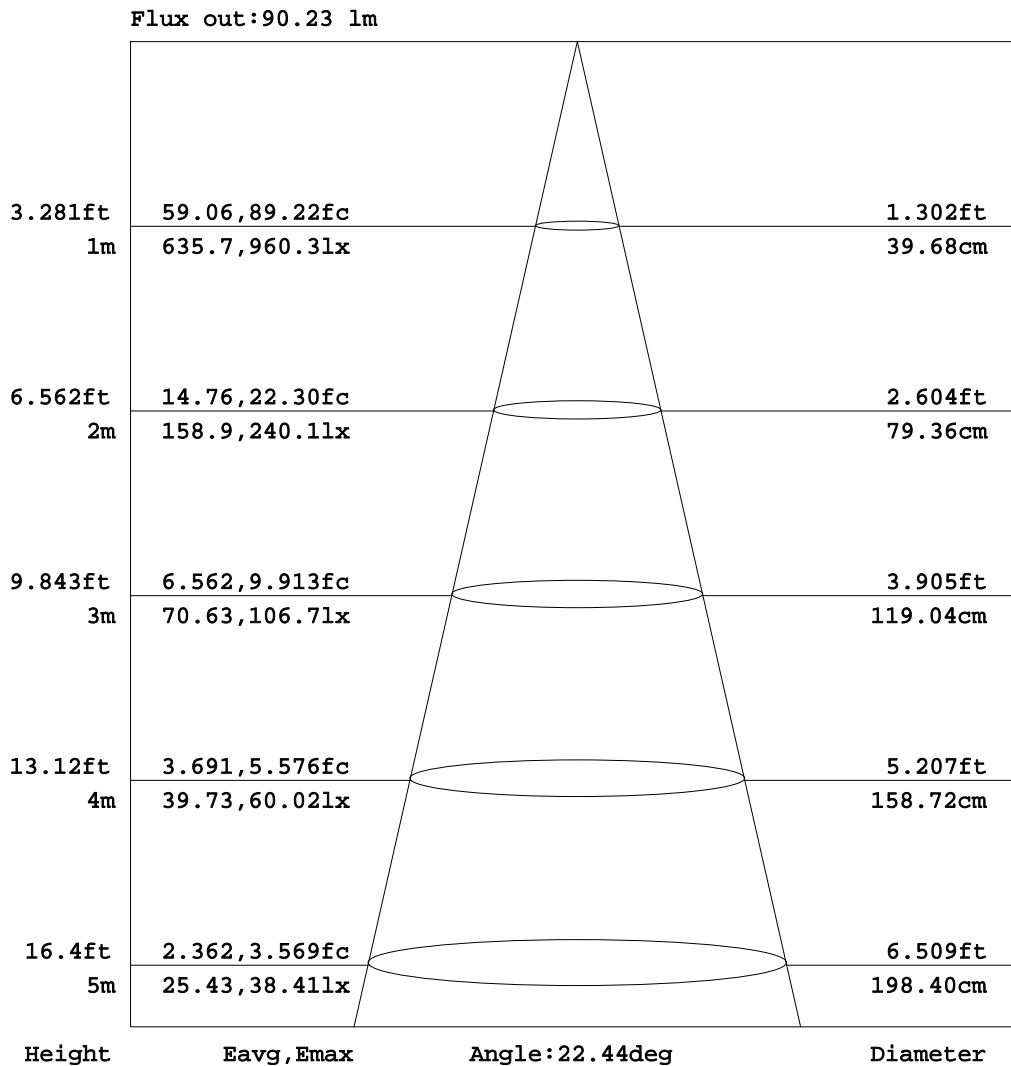
C Range: 0 - 360DEG  
C Interval: 15.0DEG  
Test Speed: HIGH  
Temperature:25.3DEG  
Operators:Cao Chengpei  
Test Date:2016-06-25

γ Range: 0 - 90DEG  
γ Interval: 1.0DEG  
Test System:EVERFINE GO-2000B\_V1 SYSTEM V2.0.288  
Humidity:53.0%  
Test Distance:5.850m [K=1.0000]  
Remarks:



**AAI Figure**

Test:U:220.6V I:0.0203A P:3.210W PF:0.7168 Lamp Flux:201.63lx1 lm		
NAME: FF1-2W-830-24D Specular	TYPE:Downlight	SERIAL No.:
SPEC.:3000K	DIM.: L45mm*W45mm*H60mm	
MFR.: NEKO LIGHTING AG		



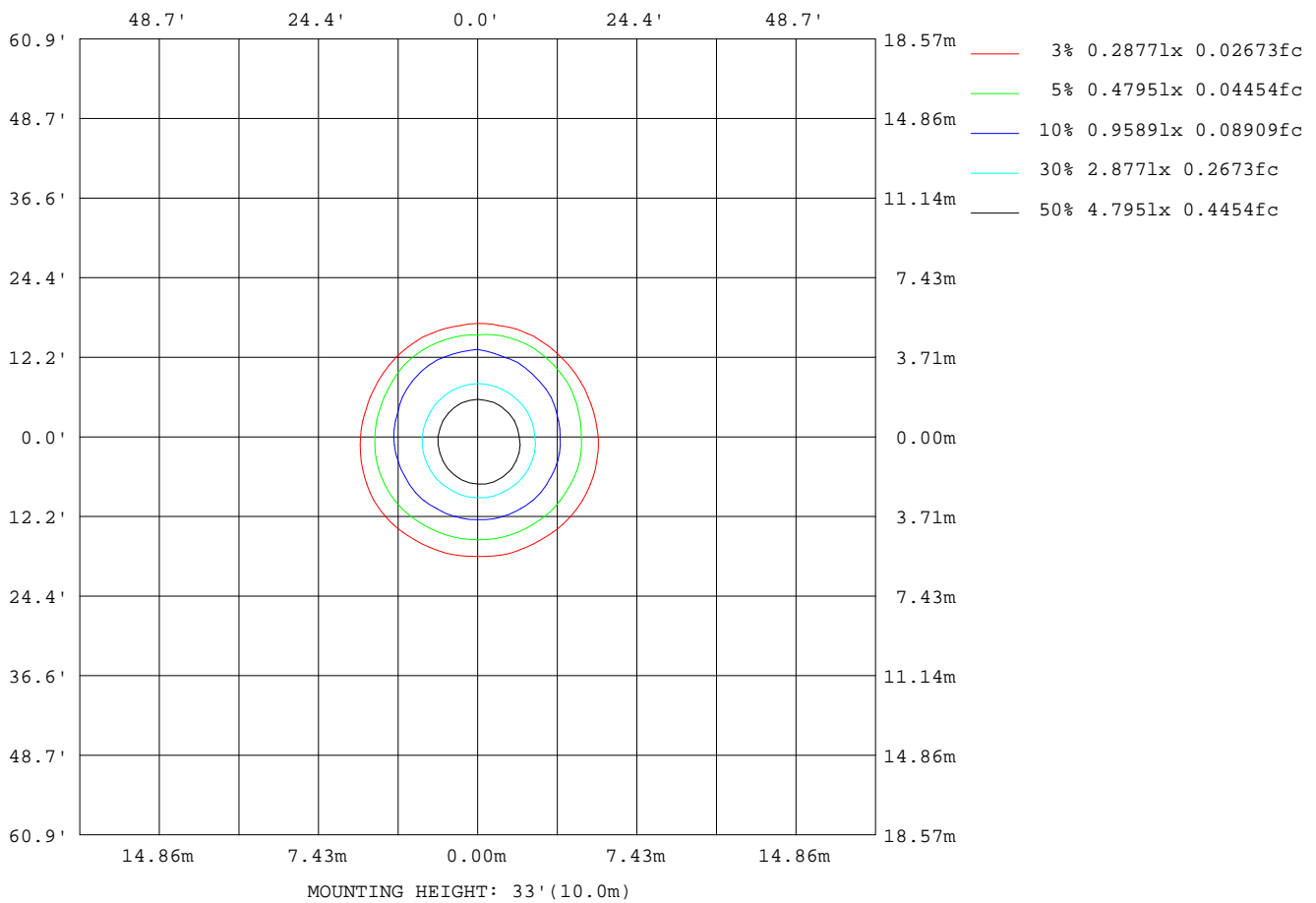
Note:The Curves indicate the illuminated area and the average illumination when the luminaire is at different distance.

C Range: 0 - 360DEG  
C Interval: 15.0DEG  
Test Speed: HIGH  
Temperature:25.3DEG  
Operators:Cao Chengpei  
Test Date:2016-06-25

γ Range: 0 - 90DEG  
γ Interval: 1.0DEG  
Test System:EVERFINE GO-2000B\_V1 SYSTEM V2.0.288  
Humidity:53.0%  
Test Distance:5.850m [K=1.0000]  
Remarks:

**ISOLUX DIAGRAM**

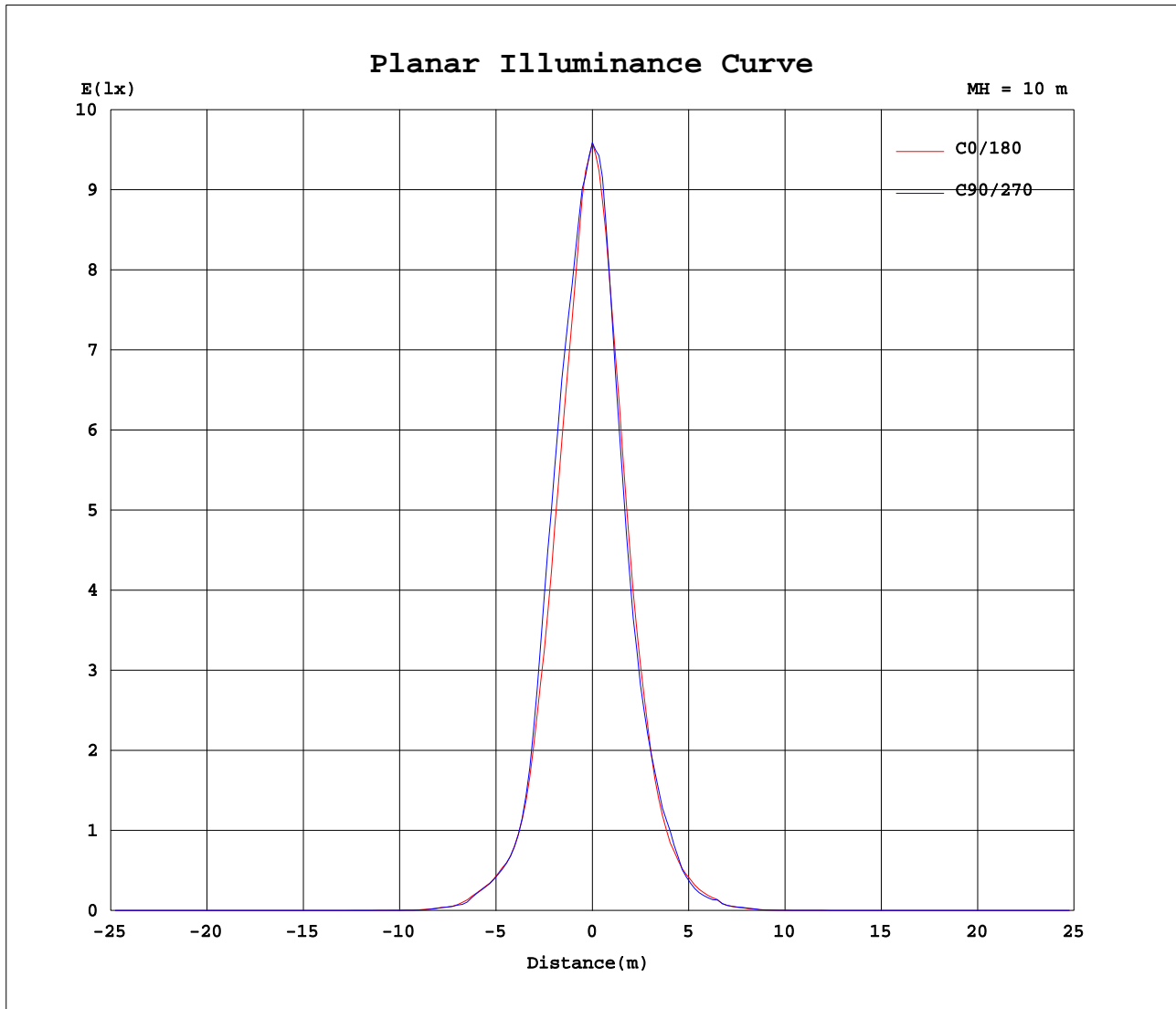
Test:U:220.6V I:0.0203A P:3.210W PF:0.7168 Lamp Flux:201.63lx1 lm		
NAME: FF1-2W-830-24D Specular	TYPE:Downlight	SERIAL No.:
SPEC.:3000K	DIM.: L45mm*W45mm*H60mm	
MFR.: NEKO LIGHTING AG		



C Range: 0 - 360DEG  
C Interval: 15.0DEG  
Test Speed: HIGH  
Temperature:25.3DEG  
Operators:Cao Chengpei  
Test Date:2016-06-25

γ Range: 0 - 90DEG  
γ Interval: 1.0DEG  
Test System:EVERFINE GO-2000B\_V1 SYSTEM V2.0.288  
Humidity:53.0%  
Test Distance:5.850m [K=1.0000]  
Remarks:

Planar Illuminance Curve



C Range: 0 - 360DEG  
C Interval: 15.0DEG  
Test Speed: HIGH  
Temperature: 25.3DEG  
Operators: Cao Chengpei  
Test Date: 2016-06-25

$\gamma$  Range: 0 - 90DEG  
 $\gamma$  Interval: 1.0DEG  
Test System: EVERFINE GO-2000B\_V1 SYSTEM V2.0.288  
Humidity: 53.0%  
Test Distance: 5.850m [K=1.0000]  
Remarks:





Photometric Data Table [cd]

G/C	0.0	15.0	30.0	45.0	60.0	75.0	90.0	105.0	120.0	135.0
0.0	958.9	958.9	959.4	958.9	959.7	958.5	958.7	958.1	957.4	958.6
3.0	893.7	896.5	891.9	902.1	903.0	909.4	904.9	896.6	888.9	886.5
6.0	749.7	761.3	771.7	791.0	798.3	803.8	794.0	791.6	775.3	764.5
9.0	608.8	636.2	659.6	678.9	690.2	697.4	688.5	676.3	651.2	640.2
12.0	452.2	484.4	506.3	529.9	539.0	548.6	535.1	527.1	502.5	482.4
15.0	318.0	340.5	353.6	373.6	372.4	384.2	370.7	366.3	343.7	335.9
18.0	193.9	201.8	208.2	213.2	212.1	215.3	207.3	207.5	201.6	200.5
21.0	117.7	124.5	122.9	129.9	124.3	124.5	116.6	119.0	118.9	125.0
24.0	78.54	79.34	80.01	80.96	79.18	79.13	77.78	78.13	78.04	79.88
27.0	56.69	60.18	58.52	58.71	57.00	56.42	55.71	55.60	56.38	58.33
30.0	40.42	42.05	43.12	42.28	40.50	40.48	39.09	40.38	40.46	41.69
33.0	22.88	25.44	23.93	23.93	21.09	20.67	18.04	19.17	19.36	22.13
36.0	10.09	11.24	11.48	11.61	10.92	10.30	9.850	9.837	10.24	10.34
39.0	6.436	7.605	6.934	7.411	6.865	6.297	5.680	6.002	6.075	5.850
42.0	2.285	2.431	2.332	2.223	1.970	1.865	1.760	1.833	1.821	1.923
45.0	1.302	1.349	1.259	1.138	0.9740	0.9212	0.8842	0.9151	0.9607	1.043
48.0	0.9318	0.9281	0.8828	0.7791	0.6930	0.6322	0.6440	0.6535	0.7016	0.7429
51.0	0.7420	0.7195	0.6930	0.6024	0.5395	0.4832	0.4968	0.4960	0.5332	0.5598
54.0	0.5864	0.5663	0.5395	0.4705	0.4307	0.3811	0.3945	0.3896	0.4201	0.4322
57.0	0.4584	0.4321	0.4158	0.3619	0.3390	0.3002	0.3177	0.3044	0.3305	0.3321
60.0	0.3497	0.3214	0.3156	0.2725	0.2686	0.2320	0.2516	0.2342	0.2580	0.2533
63.0	0.2624	0.2384	0.2410	0.2086	0.2111	0.1809	0.2004	0.1809	0.2026	0.1958
66.0	0.2005	0.1767	0.1856	0.1618	0.1706	0.1384	0.1599	0.1405	0.1599	0.1469
69.0	0.1578	0.1341	0.1514	0.1213	0.1301	0.1064	0.1258	0.1022	0.1279	0.1149
72.0	0.1237	0.1022	0.1194	0.0894	0.1045	0.0809	0.0960	0.0788	0.0960	0.0830
75.0	0.1023	0.0788	0.0896	0.0596	0.0768	0.0810	0.0852	0.0853	0.0683	0.0553
78.0	0.0789	0.0595	0.0598	0.0319	0.0491	0.0787	0.0576	0.0852	0.0470	0.0298
81.0	0.0639	0.0298	0.0384	0.0149	0.0341	0.0639	0.0427	0.0755	0.0256	0.0149
84.0	0.0385	0.0149	0.0171	0.0149	0.0298	0.0639	0.0362	0.0658	0.0234	0.0149
87.0	0.0213	0.0149	0.0149	0.0149	0.0172	0.0149	0.0172	0.0149	0.0171	0.0149
90.0	0.0149	0.0149	0.0149	0.0149	0.0149	0.0149	0.0149	0.0149	0.0170	0.0149
G/C	150.0	165.0	180.0	195.0	210.0	225.0	240.0	255.0	270.0	285.0
0.0	956.9	958.8	958.9	958.9	959.4	958.9	958.7	958.1	958.7	958.1
3.0	876.9	885.6	889.8	894.1	902.8	905.2	910.4	909.8	919.0	910.0
6.0	745.5	743.7	751.7	749.2	749.2	748.7	754.5	740.1	741.0	738.4
9.0	611.2	599.1	589.8	567.0	568.1	559.6	562.2	547.8	556.2	550.8
12.0	455.3	437.2	424.5	401.2	397.1	387.3	391.6	386.4	390.0	387.9
15.0	320.2	308.7	299.3	283.8	283.5	275.6	279.7	275.4	279.0	276.5
18.0	197.5	192.2	191.3	186.1	193.5	195.3	201.3	199.7	201.3	196.9
21.0	119.9	122.4	124.4	121.1	131.8	137.2	136.4	134.1	139.5	125.1
24.0	80.69	84.82	82.38	79.56	79.72	81.29	88.27	86.20	88.10	93.97
27.0	58.41	56.92	54.54	49.74	48.81	51.52	49.67	46.76	48.39	51.94
30.0	41.60	37.36	34.74	32.89	31.14	29.58	30.04	28.96	29.04	28.57
33.0	21.43	22.86	23.30	19.53	19.16	18.72	21.83	21.30	22.43	20.35
36.0	9.735	9.736	9.435	9.374	9.762	9.933	10.25	9.785	10.18	10.15
39.0	5.286	5.002	5.368	5.284	5.587	5.462	5.721	5.513	6.438	6.445
42.0	1.894	1.964	2.027	1.993	2.067	2.002	2.020	1.926	2.011	2.001
45.0	1.106	1.147	1.213	1.224	1.245	1.218	1.177	1.135	1.132	1.156
48.0	0.8019	0.8258	0.8767	0.8997	0.9108	0.9039	0.8661	0.8527	0.8449	0.8740
51.0	0.6121	0.6215	0.6575	0.6823	0.6873	0.6950	0.6639	0.6652	0.6554	0.6908
54.0	0.4734	0.4726	0.4980	0.5181	0.5214	0.5288	0.5023	0.5138	0.5044	0.5372
57.0	0.3710	0.3598	0.3746	0.3965	0.3873	0.4050	0.3809	0.3965	0.3852	0.4157
60.0	0.2878	0.2746	0.2831	0.3027	0.2936	0.3070	0.2852	0.3091	0.2979	0.3240
63.0	0.2239	0.2107	0.2170	0.2366	0.2213	0.2409	0.2213	0.2494	0.2341	0.2537
66.0	0.1791	0.1660	0.1660	0.1855	0.1703	0.1961	0.1745	0.2004	0.1873	0.2025
69.0	0.1449	0.1299	0.1341	0.1534	0.1384	0.1535	0.1320	0.1641	0.1490	0.1684
72.0	0.1152	0.1022	0.1064	0.1258	0.1064	0.1216	0.0979	0.1300	0.1191	0.1322
75.0	0.0832	0.0787	0.0809	0.0981	0.0723	0.0938	0.0681	0.0959	0.0851	0.1002
78.0	0.0597	0.0511	0.0617	0.0746	0.0446	0.0618	0.0340	0.0958	0.0510	0.0980
81.0	0.0342	0.0277	0.0361	0.0512	0.0212	0.0235	0.0192	0.0682	0.0277	0.0810
84.0	0.0150	0.0149	0.0170	0.0278	0.0149	0.0149	0.0192	0.0703	0.0277	0.0873
87.0	0.0149	0.0149	0.0149	0.0149	0.0149	0.0128	0.0128	0.0197	0.0149	0.0198
90.0	0.0149	0.0149	0.0149	0.0149	0.0149	0.0128	0.0128	0.0149	0.0149	0.0149
G/C	300.0	315.0	330.0	345.0						
0.0	957.4	958.6	956.9	958.8						
3.0	914.9	902.8	906.4	900.4						
6.0	755.0	755.7	758.3	757.1						
9.0	567.2	570.9	594.6	602.2						
12.0	401.4	405.4	424.9	439.3						
15.0	282.3	285.7	299.1	306.2						
18.0	200.2	195.3	196.1	191.9						
21.0	128.0	120.7	123.2	118.1						

C Range: 0 - 360DEG  
 C Interval: 15.0DEG  
 Test Speed: HIGH  
 Temperature: 25.3DEG  
 Operators: Cao Chengpei  
 Test Date: 2016-06-25

γ Range: 0 - 90DEG  
 γ Interval: 1.0DEG  
 Test System: EVERFINE GO-2000B\_V1 SYSTEM V2.0.288  
 Humidity: 53.0%  
 Test Distance: 5.850m [K=1.0000]  
 Remarks:

Photometric Data Table [cd]

24.0	92.86	88.12	86.82	80.36
27.0	54.02	52.44	55.54	56.19
30.0	30.92	32.06	34.08	35.56
33.0	20.02	20.31	21.58	21.72
36.0	10.60	9.839	9.473	9.776
39.0	6.837	6.362	5.917	5.812
42.0	2.122	2.112	2.139	2.185
45.0	1.230	1.201	1.231	1.231
48.0	0.8896	0.8804	0.8577	0.8783
51.0	0.6980	0.6950	0.6746	0.6992
54.0	0.5363	0.5351	0.5235	0.5479
57.0	0.4043	0.4093	0.3916	0.4264
60.0	0.3021	0.3049	0.2915	0.3177
63.0	0.2234	0.2282	0.2128	0.2388
66.0	0.1703	0.1748	0.1575	0.1833
69.0	0.1320	0.1364	0.1149	0.1428
72.0	0.0979	0.1066	0.0873	0.1151
75.0	0.0702	0.0810	0.0618	0.0917
78.0	0.0425	0.0576	0.0404	0.0683
81.0	0.0256	0.0256	0.0212	0.0490
84.0	0.0256	0.0170	0.0128	0.0299
87.0	0.0149	0.0128	0.0128	0.0149
90.0	0.0149	0.0128	0.0128	0.0149

C Range: 0 - 360DEG  
 C Interval: 15.0DEG  
 Test Speed: HIGH  
 Temperature: 25.3DEG  
 Operators: Cao Chengpei  
 Test Date: 2016-06-25

γ Range: 0 - 90DEG  
 γ Interval: 1.0DEG  
 Test System: EVERFINE GO-2000B\_V1 SYSTEM V2.0.288  
 Humidity: 53.0%  
 Test Distance: 5.850m [K=1.0000]  
 Remarks: