

FL1200-GL1200-22W-840



Light Output Ratio:	100.0%	
Luminaire Power:	26.42 W	
SHR Nominal:	1.25	Calculated using the TM5
SHR Maximum:	1.35	fine grid method.

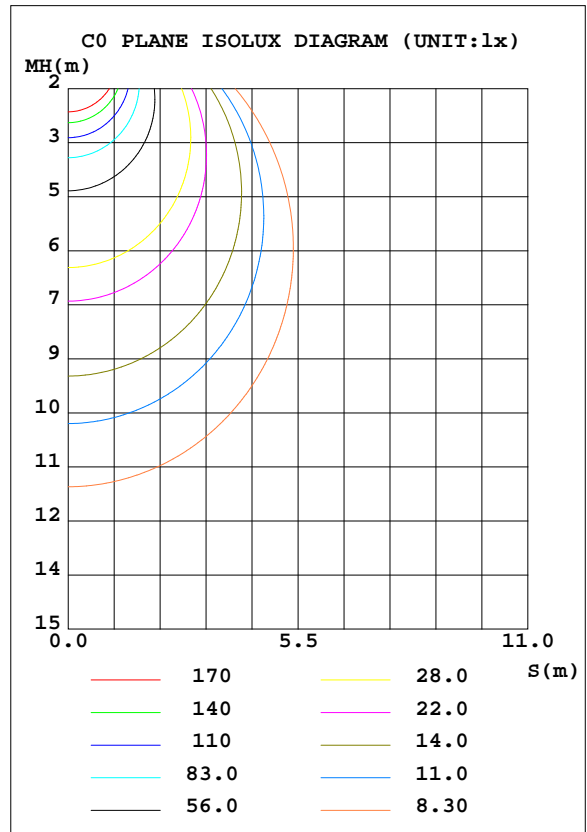
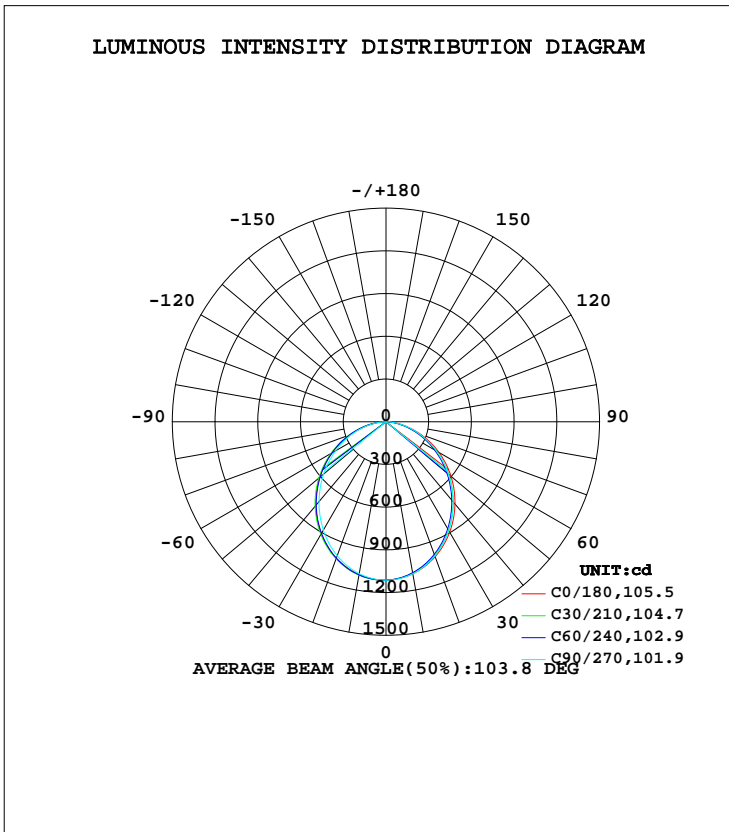
C Range: 0 - 360DEG
C Interval: 15.0DEG
Test Speed: HIGH
Temperature:25.3DEG
Operators:Meng yongjian
Test Date:2018-03-07

γ Range: 0 - 90DEG
 γ Interval: 1.0DEG
Test System:EVERFINE GO-2000B_V1 SYSTEM V2.0.288
Humidity:52%
Test Distance:5.850m [K=1.0000]
Remarks:

LUMINAIRE PHOTOMETRIC TEST REPORT

Test:U:220.8V I:0.1312A P:26.42W PF:0.9012 Freq:50.00Hz Lamp Flux:2894.92x1 lm		
NAME: FL1200-GL1200-22W-840	TYPE:Linear Light	SERIAL No.:
SPEC.:4000K	DIM.: L1200mm*W50mm*H80mm	
MFR.: NEKO LIGHTING AG		

DATA OF LAMP		PHOTOMETRIC DATA Eff: 109.57 lm/W			
MODEL	SAMSUNG-4000K	I _{max} (cd)	1113	S/MH(C0/180)	1.22
NOMINAL POWER(W)	26	LOR(%)	100.0	S/MH(C90/270)	1.18
RATED VOLTAGE(V)	220	TOTAL FLUX(lm)	2894.9	η UP, DN(C0-180)	0.0,49.4
NOMINAL FLUX(lm)	2894.92	CIE CLASS	DIRECT	η UP, DN(C180-360)	0.0,50.6
LAMPS INSIDE	1	η up(%)	0.0	CIBSE SHR NOM	1.25
TEST VOLTAGE(V)	220	η down(%)	100.0	CIBSE SHR MAX	1.35



C Range: 0 - 360DEG
 C Interval: 15.0DEG
 Test Speed: HIGH
 Temperature:25.3DEG
 Operators:Meng yongjian
 Test Date:2018-03-07

γ Range: 0 - 90DEG
 γ Interval: 1.0DEG
 Test System:EVERFINE GO-2000B_V1 SYSTEM V2.0.288
 Humidity:52%
 Test Distance:5.850m [K=1.0000]
 Remarks:

ZONAL FLUX DIAGRAM

ZONAL FLUX DIAGRAM:

γ	C0	C45	C90	C135	C180	C225	C270	C315	γ	Φ zone	Φ total	%lum, lamp
10	1084	1078	1084	1087	1090	1093	1083	1084	0- 10	104.9	104.9	3.62,3.62
20	1009	994.2	1003	1011	1019	1023	1002	1005	10- 20	296.7	401.6	13.9,13.9
30	895.5	872.8	881.4	894.6	908.0	910.7	879.8	887.3	20- 30	439.2	840.8	29,29
40	754.2	725.9	733.0	749.9	767.3	769.6	732.1	743.3	30- 40	513.7	1355	46.8,46.8
50	596.1	565.3	571.9	589.3	607.9	610.7	572.3	584.2	40- 50	515.5	1870	64.6,64.6
60	428.6	399.3	407.4	421.9	437.6	443.7	409.3	419.0	50- 60	451.0	2321	80.2,80.2
70	259.2	236.5	247.8	256.1	263.6	276.9	250.9	255.9	60- 70	334.4	2655	91.7,91.7
80	105.4	91.21	104.3	105.4	103.0	123.5	107.6	108.7	70- 80	188.8	2844	98.2,98.2
90	3.636	2.573	0.6644	1.260	0.8876	3.962	0.6360	2.937	80- 90	50.76	2895	100,100
100									90-100			
110									100-110			
120									110-120			
130									120-130			
140									130-140			
150									140-150			
160									150-160			
170									160-170			
180									170-180			
DEG	LUMINOUS INTENSITY:cd									UNIT:lm		

Conical surface Flux(90deg): 1616.5 lm

%lum = 55.8%

%lamp = 55.8%

Conical surface Flux(120deg): 2321 lm

%lum = 80.2%

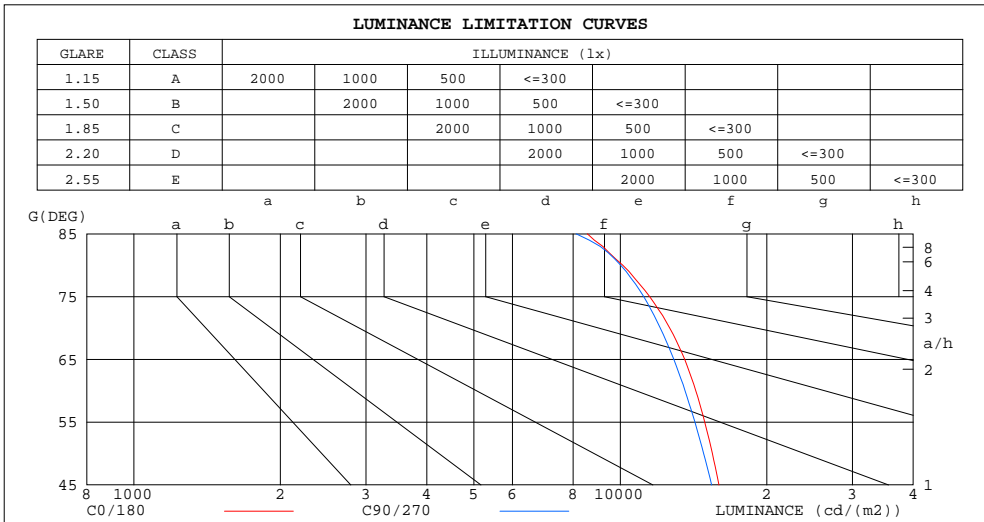
%lamp = 80.2%

C Range: 0 - 360DEG
C Interval: 15.0DEG
Test Speed: HIGH
Temperature:25.3DEG
Operators:Meng yongjian
Test Date:2018-03-07

γ Range: 0 - 90DEG
 γ Interval: 1.0DEG
Test System:EVERFINE GO-2000B_V1 SYSTEM V2.0.288
Humidity:52%
Test Distance:5.850m [K=1.0000]
Remarks:

LUMINANCE LIMITATION CURVES

Test:U:220.8V I:0.1312A P:26.42W PF:0.9012 Freq:50.00Hz Lamp Flux:2894.92x1 lm		
NAME: FL1200-GL1200-22W-840	TYPE:Linear Light	SERIAL No.:
SPEC.:4000K	DIM.: L1200mm*W50mm*H80mm	
MFR.: NEKO LIGHTING AG		



LUMINANCE cd/(m2)		
G(DEG)	C0/180	C90/270
85	8557	8115
80	10115	10019
75	11486	11168
70	12634	12081
65	13562	12882
60	14287	13585
55	14913	14231
50	15458	14835
45	15950	15406

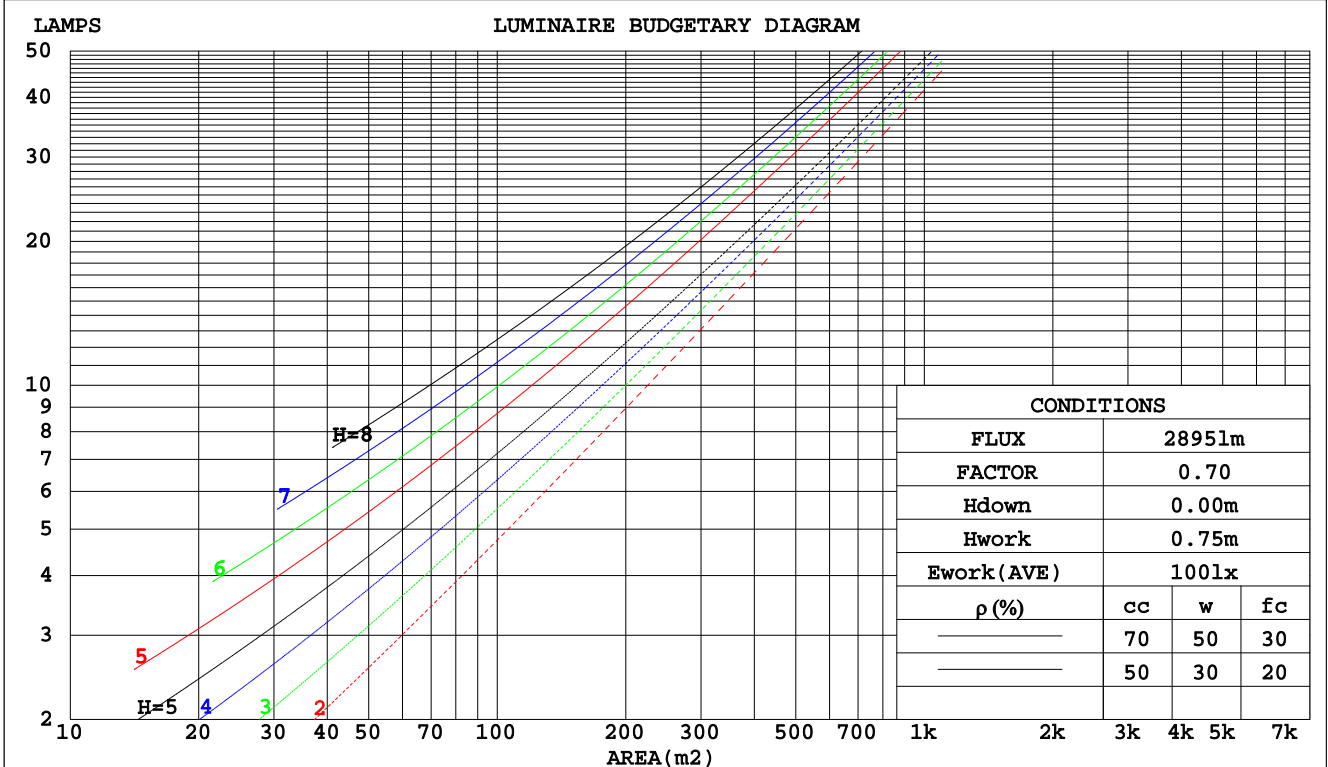
C Range: 0 - 360DEG
 C Interval: 15.0DEG
 Test Speed: HIGH
 Temperature:25.3DEG
 Operators:Meng yongjian
 Test Date:2018-03-07

γ Range: 0 - 90DEG
 γ Interval: 1.0DEG
 Test System:EVERFINE GO-2000B_V1 SYSTEM V2.0.288
 Humidity:52%
 Test Distance:5.850m [K=1.0000]
 Remarks:

CU AND LUMINAIRE BUDGETARY ESTIMATE DIAGRAM

Test:U:220.8V I:0.1312A P:26.42W PF:0.9012 Freq:50.00Hz Lamp Flux:2894.92x1 lm		
NAME: FL1200-GL1200-22W-840	TYPE:Linear Light	SERIAL No.:
SPEC.:4000K	DIM.: L1200mm*W50mm*H80mm	
MFR.: NEKO LIGHTING AG		

pcc	80%			70%			50%			30%			10%			0
	50%	30%	10%	50%	30%	10%	50%	30%	10%	50%	30%	10%	50%	30%	10%	0
pw																
pfc																
RCR	RCR:Room Cavity Ratio															
	Coefficients of Utilization(CU)															
0.0	1.19	1.19	1.19	1.16	1.16	1.16	1.11	1.11	1.11	1.06	1.06	1.06	1.02	1.02	1.02	1.00
1.0	1.04	1.00	.96	1.02	.98	.95	.98	.95	.92	.94	.91	.89	.90	.88	.86	.84
2.0	.91	.84	.79	.89	.83	.78	.86	.80	.76	.82	.78	.74	.79	.76	.73	.70
3.0	.80	.72	.66	.79	.71	.65	.76	.69	.64	.73	.67	.63	.70	.66	.62	.60
4.0	.71	.63	.56	.70	.62	.56	.67	.60	.55	.65	.59	.54	.63	.58	.53	.51
5.0	.64	.55	.48	.63	.54	.48	.61	.53	.48	.59	.52	.47	.57	.51	.46	.44
6.0	.58	.49	.42	.57	.48	.42	.55	.47	.42	.53	.46	.41	.52	.46	.41	.39
7.0	.52	.44	.37	.51	.43	.37	.50	.42	.37	.48	.42	.37	.47	.41	.37	.35
8.0	.48	.39	.34	.47	.39	.33	.46	.38	.33	.44	.38	.33	.43	.37	.33	.31
9.0	.44	.36	.30	.43	.35	.30	.42	.35	.30	.41	.35	.30	.40	.34	.30	.28
10.0	.41	.33	.27	.40	.32	.27	.39	.32	.27	.38	.32	.27	.37	.31	.27	.25



C Range: 0 - 360DEG
 C Interval: 15.0DEG
 Test Speed: HIGH
 Temperature: 25.3DEG
 Operators: Meng yongjian
 Test Date: 2018-03-07

γ Range: 0 - 90DEG
 γ Interval: 1.0DEG
 Test System: EVERFINE GO-2000B_V1 SYSTEM V2.0.288
 Humidity: 52%
 Test Distance: 5.850m [K=1.0000]
 Remarks:

WEC AND CCEC

Test:U:220.8V I:0.1312A P:26.42W PF:0.9012 Freq:50.00Hz Lamp Flux:2894.92x1 lm		
NAME: FL1200-GL1200-22W-840	TYPE:Linear Light	SERIAL No.:
SPEC.:4000K	DIM.: L1200mm*W50mm*H80mm	
MFR.: NEKO LIGHTING AG		

ρcc	80%			70%			50%			30%			10%			0
ρw	50%	30%	10%	50%	30%	10%	50%	30%	10%	50%	30%	10%	50%	30%	10%	0
ρfc	20%			20%			20%			20%			20%			0
RCR	RCR:Room Cavity Ratio						Wall Exitance Coefficients(WEC)									
0.0																
1.0	.302	.172	.054	.295	.168	.053	.282	.162	.052	.270	.156	.050	.259	.150	.048	
2.0	.285	.156	.048	.279	.154	.047	.267	.149	.046	.257	.144	.045	.247	.140	.044	
3.0	.264	.141	.042	.259	.139	.042	.249	.135	.041	.239	.131	.040	.230	.128	.039	
4.0	.244	.127	.037	.240	.125	.037	.231	.122	.037	.222	.119	.036	.214	.116	.035	
5.0	.226	.115	.033	.222	.114	.033	.214	.111	.033	.206	.109	.032	.199	.107	.032	
6.0	.210	.105	.030	.206	.104	.030	.199	.102	.030	.193	.100	.029	.186	.098	.029	
7.0	.196	.097	.027	.193	.096	.027	.186	.094	.027	.180	.092	.027	.174	.091	.027	
8.0	.183	.089	.025	.180	.089	.025	.174	.087	.025	.169	.086	.025	.164	.084	.025	
9.0	.172	.083	.023	.169	.082	.023	.164	.081	.023	.159	.080	.023	.154	.078	.023	
10.0	.162	.078	.022	.159	.077	.021	.155	.076	.021	.150	.075	.021	.146	.073	.021	

ρcc	80%			70%			50%			30%			10%			0
ρw	50%	30%	10%	50%	30%	10%	50%	30%	10%	50%	30%	10%	50%	30%	10%	0
ρfc	20%			20%			20%			20%			20%			0
RCR	RCR:Room Cavity Ratio						Ceiling Cavity Exitance Coefficients(CCEC)									
0.0	.190	.190	.190	.163	.163	.163	.111	.111	.111	.064	.064	.064	.020	.020	.020	
1.0	.180	.156	.135	.154	.134	.116	.105	.092	.080	.061	.053	.047	.019	.017	.015	
2.0	.171	.132	.099	.147	.114	.085	.101	.079	.060	.058	.046	.035	.019	.015	.011	
3.0	.163	.114	.075	.140	.099	.065	.096	.068	.046	.056	.040	.027	.018	.013	.009	
4.0	.156	.101	.059	.134	.087	.051	.092	.061	.036	.053	.036	.021	.017	.012	.007	
5.0	.148	.090	.048	.127	.078	.042	.088	.055	.029	.051	.032	.017	.016	.010	.006	
6.0	.141	.082	.040	.121	.071	.035	.084	.050	.024	.049	.029	.015	.016	.010	.005	
7.0	.134	.075	.034	.116	.065	.029	.080	.046	.021	.046	.027	.012	.015	.009	.004	
8.0	.128	.069	.029	.110	.060	.025	.076	.042	.018	.044	.025	.011	.014	.008	.004	
9.0	.122	.064	.025	.105	.056	.022	.073	.039	.016	.042	.023	.009	.014	.008	.003	
10.0	.116	.060	.023	.100	.052	.020	.070	.037	.014	.041	.022	.008	.013	.007	.003	

C Range: 0 - 360DEG
 C Interval: 15.0DEG
 Test Speed: HIGH
 Temperature:25.3DEG
 Operators:Meng yongjian
 Test Date:2018-03-07

γ Range: 0 - 90DEG
 γ Interval: 1.0DEG
 Test System:EVERFINE GO-2000B_V1 SYSTEM V2.0.288
 Humidity:52%
 Test Distance:5.850m [K=1.0000]
 Remarks:

UGR(Unified Glare Rating) Table

Test:U:220.8V I:0.1312A P:26.42W PF:0.9012 Freq:50.00Hz Lamp Flux:2894.92x1 lm		
NAME: FL1200-GL1200-22W-840	TYPE:Linear Light	SERIAL No.:
SPEC.:4000K	DIM.: L1200mm*W50mm*H80mm	
MFR.: NEKO LIGHTING AG		

ceiling/cavity	0.7	0.7	0.5	0.5	0.3	0.7	0.7	0.5	0.5	0.3
walls	0.5	0.3	0.5	0.3	0.3	0.5	0.3	0.5	0.3	0.3
working plane	0.2	0.2	0.2	0.2	0.2	0.2	0.2	0.2	0.2	0.2
Room dimensions	Viewed crosswise					Viewed endwise				
x = 2H y = 2H	18.3	19.8	18.6	20.0	20.2	18.1	19.6	18.3	19.8	20.0
3H	19.8	21.2	20.1	21.4	21.6	19.5	20.9	19.8	21.1	21.3
4H	20.3	21.6	20.6	21.9	22.1	20.1	21.4	20.4	21.6	21.9
6H	20.7	22.0	21.0	22.2	22.5	20.5	21.7	20.8	22.0	22.2
8H	20.8	22.0	21.2	22.3	22.6	20.6	21.8	20.9	22.1	22.3
12H	20.9	22.0	21.2	22.3	22.6	20.6	21.8	21.0	22.1	22.4
4H 2H	18.8	20.2	19.2	20.4	20.7	18.6	19.9	18.9	20.2	20.5
3H	20.4	21.6	20.8	21.9	22.2	20.2	21.3	20.5	21.6	21.9
4H	21.1	22.2	21.5	22.5	22.8	20.9	21.9	21.2	22.2	22.6
6H	21.6	22.6	22.0	22.9	23.3	21.4	22.3	21.8	22.7	23.0
8H	21.8	22.7	22.2	23.0	23.4	21.6	22.4	22.0	22.8	23.2
12H	21.9	22.7	22.3	23.1	23.5	21.7	22.5	22.1	22.9	23.3
8H 4H	21.3	22.2	21.7	22.5	22.9	21.1	22.0	21.5	22.3	22.7
6H	21.9	22.7	22.4	23.1	23.5	21.7	22.4	22.2	22.8	23.3
8H	22.2	22.8	22.6	23.2	23.7	22.0	22.6	22.4	23.0	23.5
12H	22.4	22.9	22.8	23.4	23.8	22.1	22.7	22.6	23.1	23.6
12H 4H	21.3	22.1	21.7	22.5	22.9	21.1	21.9	21.5	22.3	22.7
6H	22.0	22.6	22.4	23.0	23.5	21.8	22.4	22.2	22.8	23.3
8H	22.2	22.8	22.7	23.2	23.7	22.0	22.6	22.5	23.0	23.5
Variations with the observer position at spacings:										
S = 1.0H	+ 0.2 / - 0.2					+ 0.2 / - 0.2				
1.5H	+ 0.2 / - 0.3					+ 0.1 / - 0.3				
2.0H	+ 0.3 / - 0.3					+ 0.3 / - 0.2				

CIE Pub.117, 2895 lm Total Lamp Luminous Flux Correct (8log(F/F0) = 3.7)

C Range: 0 - 360DEG
 C Interval: 15.0DEG
 Test Speed: HIGH
 Temperature:25.3DEG
 Operators:Meng yongjian
 Test Date:2018-03-07

γ Range: 0 - 90DEG
 γ Interval: 1.0DEG
 Test System:EVERFINE GO-2000B_V1 SYSTEM V2.0.288
 Humidity:52%
 Test Distance:5.850m [K=1.0000]
 Remarks:

UTILIZATION FACTORS TABLE

Test:U:220.8V I:0.1312A P:26.42W PF:0.9012 Freq:50.00Hz Lamp Flux:2894.92x1 lm		
NAME: FL1200-GL1200-22W-840	TYPE:Linear Light	SERIAL No.:
SPEC.:4000K	DIM.: L1200mm*W50mm*H80mm	
MFR.: NEKO LIGHTING AG		

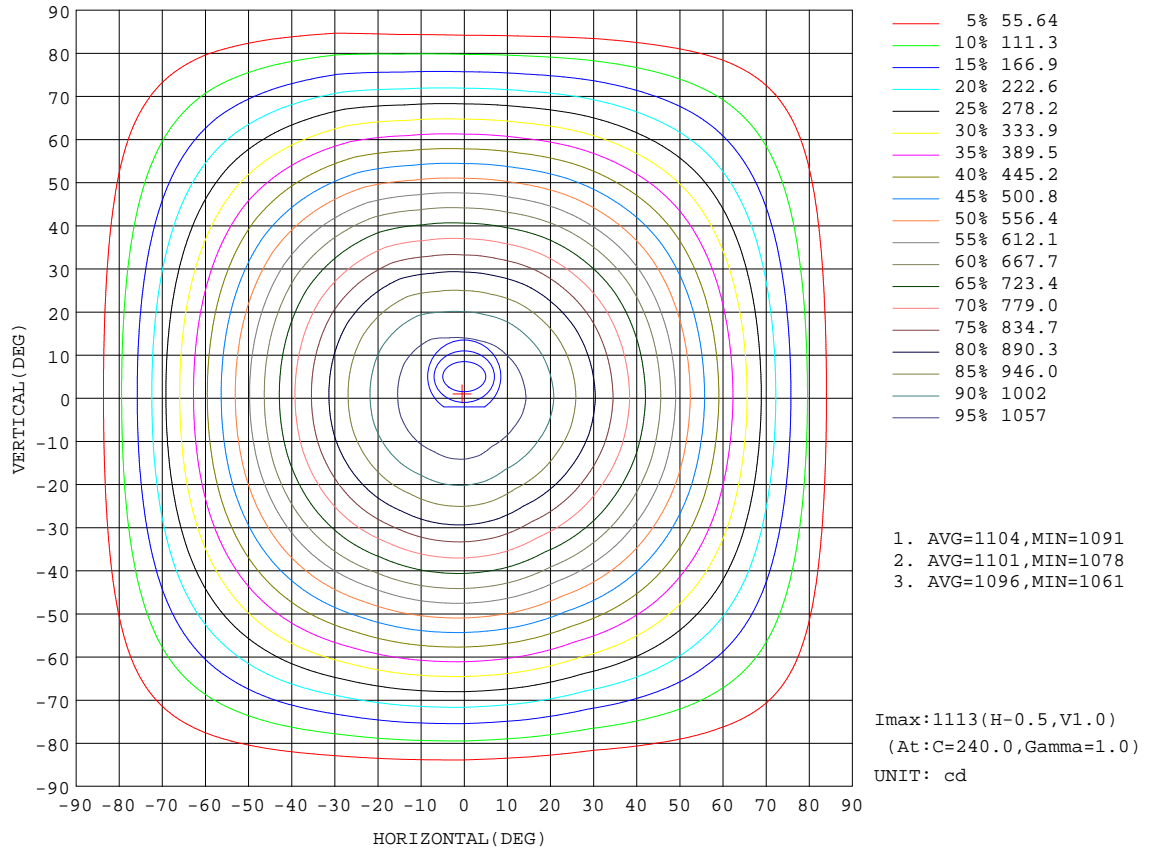
REFLECTANCE										
Ceiling	0.8	0.8	0.8	0.7	0.7	0.7	0.5	0.5	0.5	0
Walls	0.7	0.5	0.3	0.7	0.5	0.3	0.7	0.5	0.3	0
Working plane	0.2	0.2	0.2	0.2	0.2	0.2	0.2	0.2	0.2	0
ROOM INDEX	UTILIZATION FACTORS(PERCENT) $k(RI) \times RCR = 5$									
k = 0.60	59	47	41	58	47	40	57	47	40	34
0.80	69	57	50	68	57	50	66	56	50	43
1.00	77	66	59	76	66	59	74	67	58	51
1.25	84	74	67	83	73	66	80	72	66	59
1.50	89	79	73	87	78	72	84	77	71	64
2.00	96	87	81	94	86	80	90	84	79	71
2.50	99	92	86	97	91	85	94	88	83	75
3.00	103	96	91	101	95	90	97	92	87	79
4.00	107	101	97	104	99	95	100	96	93	84
5.00	109	104	100	107	102	99	102	99	96	87
ROOM INDEX	UF(total)									Direct
According to DIN EN 13032-2 2004			Suspended				SHRNOM = 1.25			

C Range: 0 - 360DEG
 C Interval: 15.0DEG
 Test Speed: HIGH
 Temperature:25.3DEG
 Operators:Meng yongjian
 Test Date:2018-03-07

γ Range: 0 - 90DEG
 γ Interval: 1.0DEG
 Test System:EVERFINE GO-2000B_V1 SYSTEM V2.0.288
 Humidity:52%
 Test Distance:5.850m [K=1.0000]
 Remarks:

ISOCANDELA DIAGRAM

Test:U:220.8V I:0.1312A P:26.42W PF:0.9012 Freq:50.00Hz Lamp Flux:2894.92x1 lm		
NAME: FL1200-GL1200-22W-840	TYPE:Linear Light	SERIAL No.:
SPEC.:4000K	DIM.: L1200mm*W50mm*H80mm	
MFR.: NEKO LIGHTING AG		



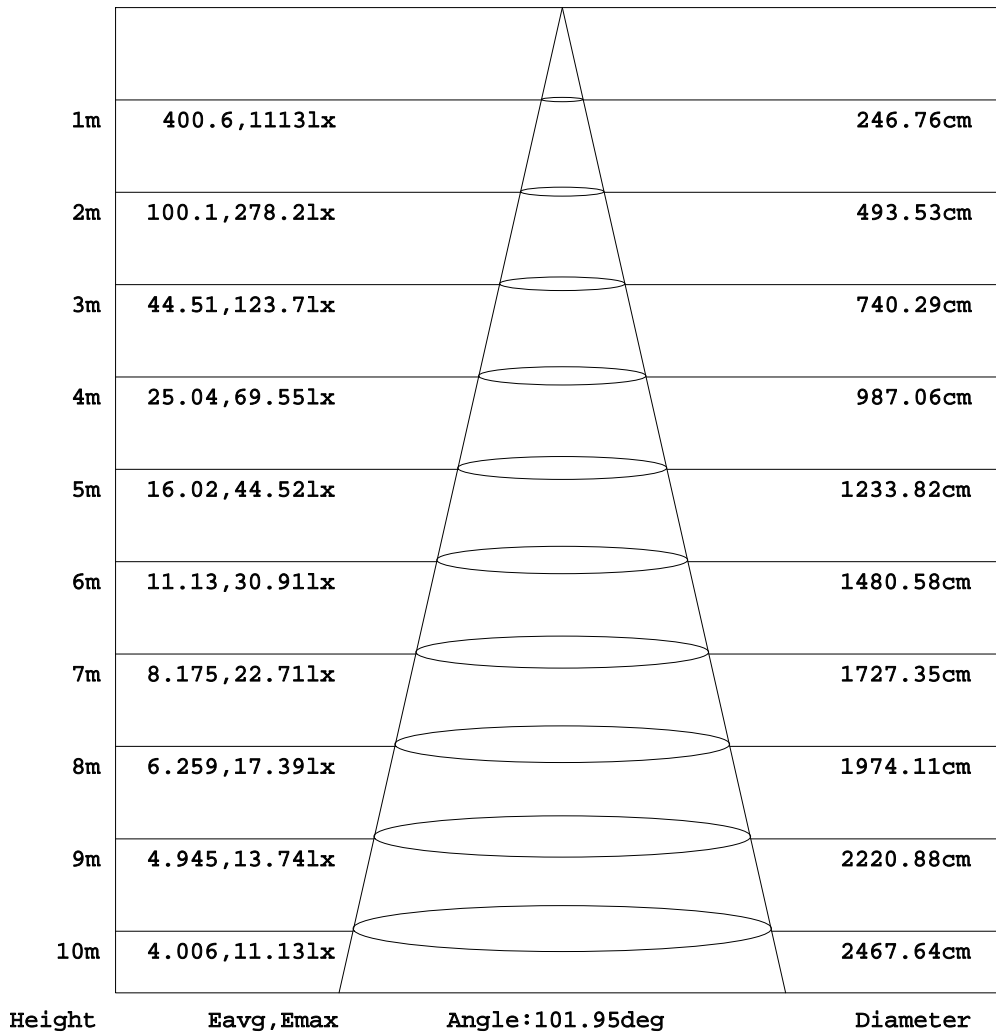
C Range: 0 - 360DEG
 C Interval: 15.0DEG
 Test Speed: HIGH
 Temperature:25.3DEG
 Operators:Meng yongjian
 Test Date:2018-03-07

γ Range: 0 - 90DEG
 γ Interval: 1.0DEG
 Test System:EVERFINE GO-2000B_V1 SYSTEM V2.0.288
 Humidity:52%
 Test Distance:5.850m [K=1.0000]
 Remarks:

AAI Figure

Test:U:220.8V I:0.1312A P:26.42W PF:0.9012 Freq:50.00Hz Lamp Flux:2894.92x1 lm		
NAME: FL1200-GL1200-22W-840	TYPE:Linear Light	SERIAL No.:
SPEC.:4000K	DIM.: L1200mm*W50mm*H80mm	
MFR.: NEKO LIGHTING AG		

Flux out:1919 lm



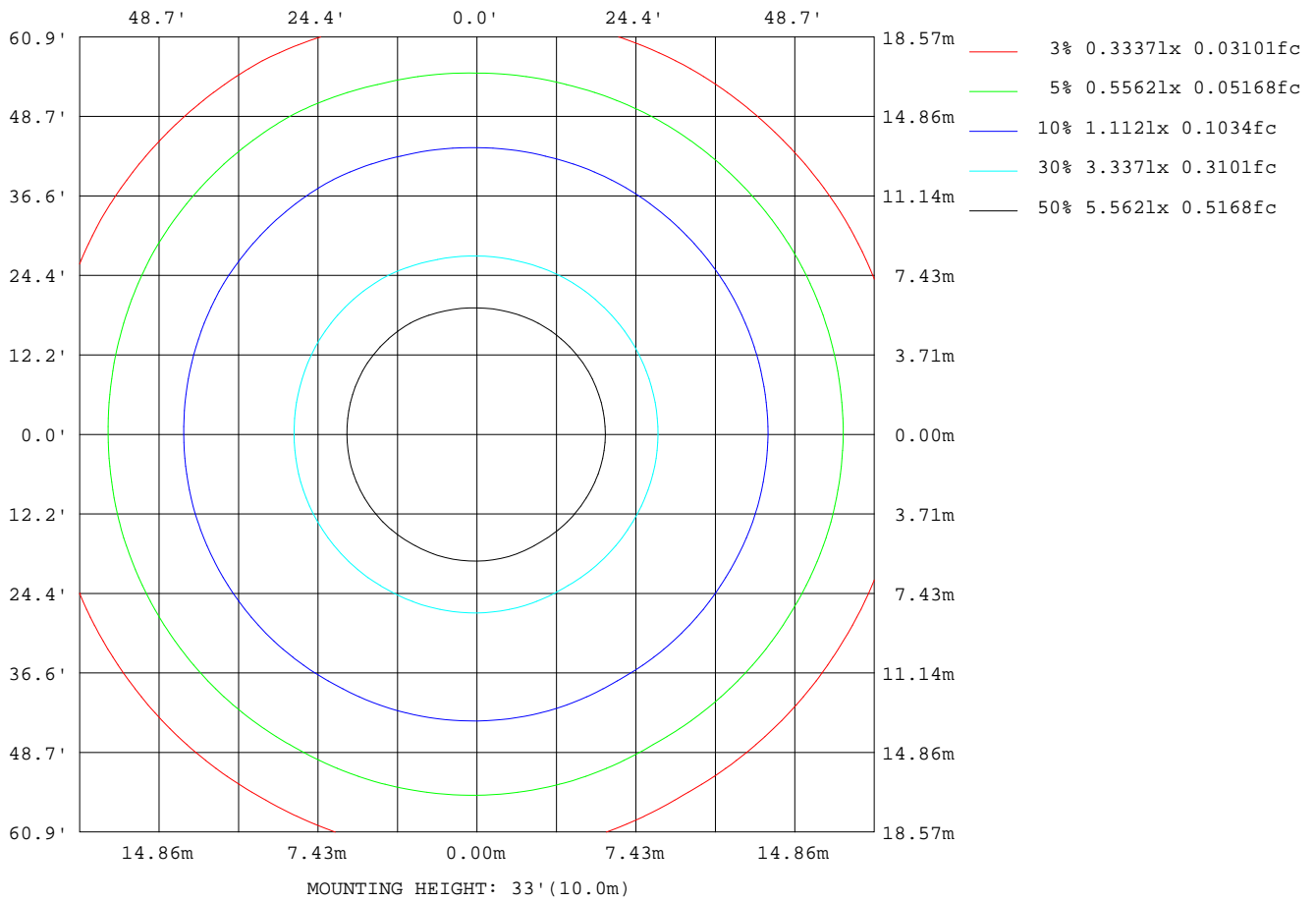
Note:The Curves indicate the illuminated area and the average illumination when the luminaire is at different distance.

C Range: 0 - 360DEG
C Interval: 15.0DEG
Test Speed: HIGH
Temperature:25.3DEG
Operators:Meng yongjian
Test Date:2018-03-07

γ Range: 0 - 90DEG
γ Interval: 1.0DEG
Test System:EVERFINE GO-2000B_V1 SYSTEM V2.0.288
Humidity:52%
Test Distance:5.850m [K=1.0000]
Remarks:

ISOLUX DIAGRAM

Test:U:220.8V I:0.1312A P:26.42W PF:0.9012 Freq:50.00Hz Lamp Flux:2894.92x1 lm		
NAME: FL1200-GL1200-22W-840	TYPE:Linear Light	SERIAL No.:
SPEC.:4000K	DIM.: L1200mm*W50mm*H80mm	
MFR.: NEKO LIGHTING AG		



C Range: 0 - 360DEG
C Interval: 15.0DEG
Test Speed: HIGH
Temperature:25.3DEG
Operators:Meng yongjian
Test Date:2018-03-07

γ Range: 0 - 90DEG
γ Interval: 1.0DEG
Test System:EVERFINE GO-2000B_V1 SYSTEM V2.0.288
Humidity:52%
Test Distance:5.850m [K=1.0000]
Remarks:

LED Avg.L Report

Test:U:220.8V I:0.1312A P:26.42W PF:0.9012 Freq:50.00Hz Lamp Flux:2894.92x1 lm		
NAME: FL1200-GL1200-22W-840	TYPE:Linear Light	SERIAL No.:
SPEC.:4000K	DIM.: L1200mm*W50mm*H80mm	
MFR.: NEKO LIGHTING AG		

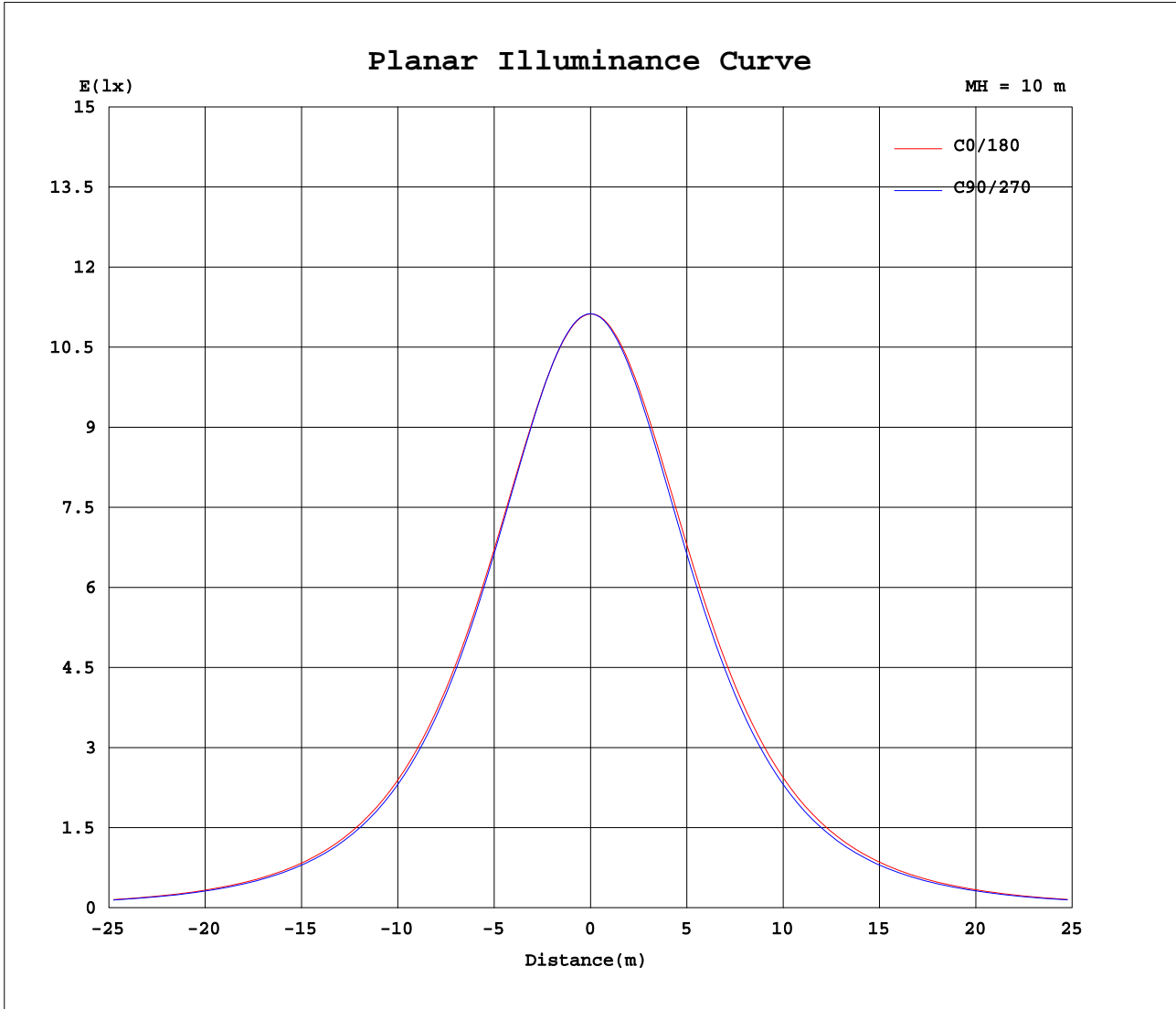
AvgL	cd/m2
L_0~180(65)av	13692
L_0~180(75)av	11536
L_0~180(85)av	8098
L_90~270(65)av	12926
L_90~270(75)av	11272
L_90~270(85)av	8433
L_45(65)av	13321
L_45(75)av	11510
L_45(85)av	8570

Standard: GB/T 29293-2012

C Range: 0 - 360DEG
C Interval: 15.0DEG
Test Speed: HIGH
Temperature:25.3DEG
Operators:Meng yongjian
Test Date:2018-03-07

γ Range: 0 - 90DEG
γ Interval: 1.0DEG
Test System:EVERFINE GO-2000B_V1 SYSTEM V2.0.288
Humidity:52%
Test Distance:5.850m [K=1.0000]
Remarks:

Planar Illuminance Curve



C Range: 0 - 360DEG
 C Interval: 15.0DEG
 Test Speed: HIGH
 Temperature: 25.3DEG
 Operators: Meng yongjian
 Test Date: 2018-03-07

γ Range: 0 - 90DEG
 γ Interval: 1.0DEG
 Test System: EVERFINE GO-2000B_V1 SYSTEM V2.0.288
 Humidity: 52%
 Test Distance: 5.850m [K=1.0000]
 Remarks:

