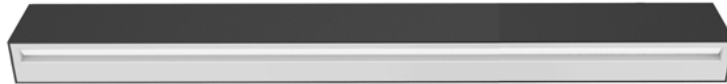


FL600-WW600-16W-830



Light Output Ratio:	100.0%	
Luminaire Power:	15.05 W	
SHR Nominal:	1.00	Calculated using the TM5
SHR Maximum:	1.10	fine grid method.

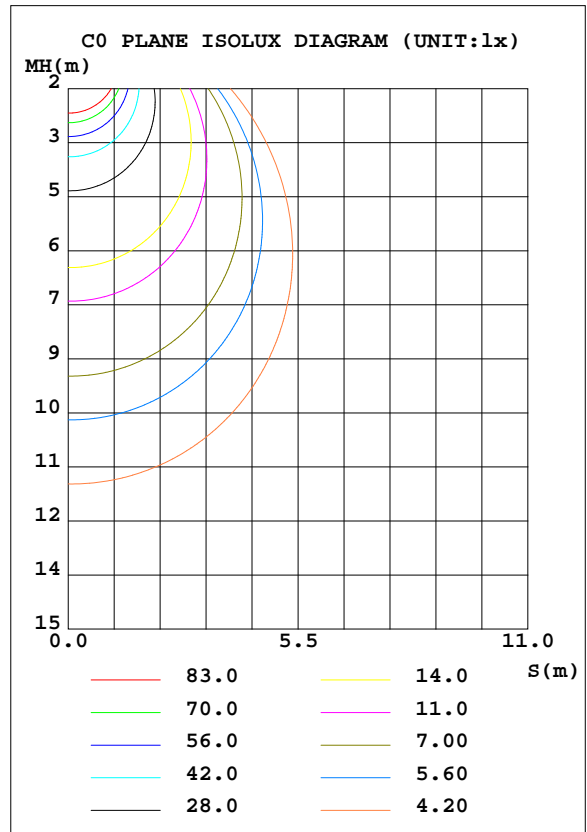
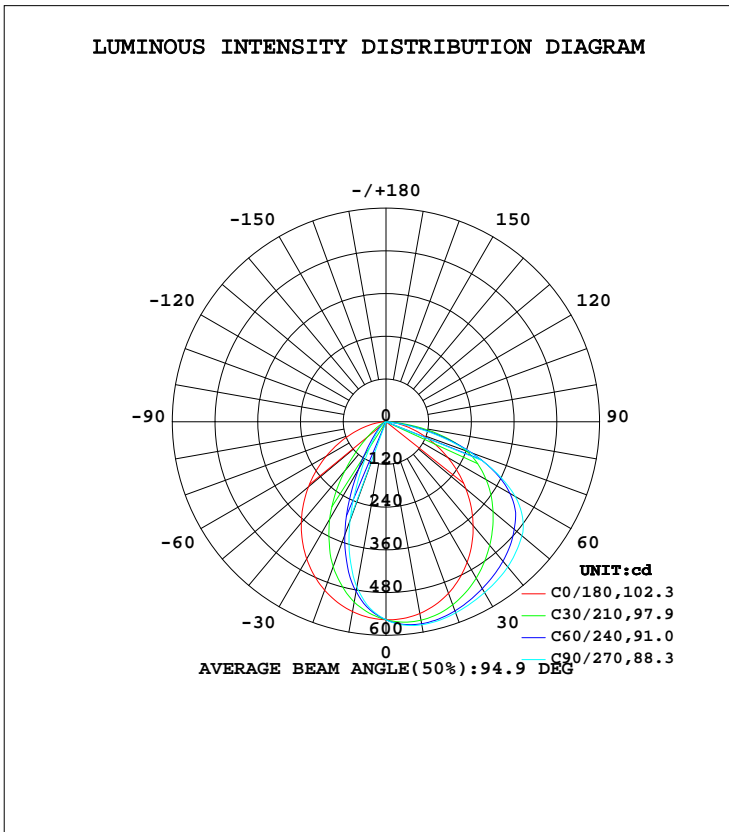
C Range: 0 - 360DEG  
C Interval: 15.0DEG  
Test Speed: HIGH  
Temperature: 25.3DEG  
Operators: Myles  
Test Date: 2018-12-04

$\gamma$  Range: 0 - 90DEG  
 $\gamma$  Interval: 1.0DEG  
Test System: EVERFINE GO-2000B\_V1 SYSTEM V2.0.362  
Humidity: 56%  
Test Distance: 5.850m [K=1.0000]  
Remarks:

LUMINAIRE PHOTOMETRIC TEST REPORT

Test:U:43.00V I:0.3500A P:15.05W PF:1.000 Freq:0Hz Lamp Flux:1275.08x1 lm		
NAME: FL600-WW600-16W-830	TYPE:Linear Light	SERIAL No.:
SPEC.:3000K	DIM.: L600mm*W50mm*H80mm	
MFR.: NEKO LIGHTING AG		

DATA OF LAMP		PHOTOMETRIC DATA Eff: 84.72 lm/W			
MODEL	SAMSUNG-3000K	I <sub>max</sub> (cd)	579.3	S/MH(C0/180)	1.20
NOMINAL POWER(W)	15	LOR(%)	100.0	S/MH(C90/270)	0.67
RATED VOLTAGE(V)	48	TOTAL FLUX(lm)	1275.1	η UP, DN(C0-180)	0.0,75.8
NOMINAL FLUX(lm)	1275.08	CIE CLASS	DIRECT	η UP, DN(C180-360)	0.0,24.2
LAMPS INSIDE	1	η up(%)	0.0	CIBSE SHR NOM	1.00
TEST VOLTAGE(V)	43	η down(%)	100.0	CIBSE SHR MAX	1.10



C Range: 0 - 360DEG  
 C Interval: 15.0DEG  
 Test Speed: HIGH  
 Temperature:25.3DEG  
 Operators:Myles  
 Test Date:2018-12-04

γ Range: 0 - 90DEG  
 γ Interval: 1.0DEG  
 Test System:EVERFINE GO-2000B\_V1 SYSTEM V2.0.362  
 Humidity:56%  
 Test Distance:5.850m [K=1.0000]  
 Remarks:

ZONAL FLUX DIAGRAM

ZONAL FLUX DIAGRAM:

$\gamma$	C0	C45	C90	C135	C180	C225	C270	C315	$\gamma$	$\Phi$ zone	$\Phi$ total	%lum, lamp
10	546.9	572.6	579.0	570.2	541.6	496.8	471.7	499.9	0- 10	52.10	52.10	4.09,4.09
20	512.8	558.7	571.5	554.0	503.7	381.1	296.0	384.5	10- 20	142.4	194.5	15.3,15.3
30	456.0	526.8	554.0	519.9	445.2	222.8	110.6	225.7	20- 30	196.4	390.9	30.7,30.7
40	380.8	485.9	532.3	476.8	370.2	88.48	37.97	90.11	30- 40	215.6	606.5	47.6,47.6
50	293.2	437.3	498.4	426.2	284.3	31.57	14.22	32.39	40- 50	215.0	821.5	64.4,64.4
60	200.2	374.9	418.6	362.5	194.0	11.49	5.775	11.85	50- 60	198.2	1020	80,80
70	111.8	258.0	252.1	247.2	107.9	4.442	2.460	4.568	60- 70	156.3	1176	92.2,92.2
80	39.66	87.15	59.33	82.08	38.44	1.704	1.019	1.715	70- 80	85.44	1262	98.9,98.9
90	0.3324	0.1726	0.1005	0.1729	0.2952	0.4873	0.3910	0.4466	80- 90	13.55	1275	100,100
100									90-100			
110									100-110			
120									110-120			
130									120-130			
140									130-140			
150									140-150			
160									150-160			
170									160-170			
180									170-180			
DEG	LUMINOUS INTENSITY:cd									UNIT:lm		

Conical surface Flux(90deg): 715.07 lm

%lum = 56.1%

%lamp = 56.1%

Conical surface Flux(120deg): 1019.7 lm

%lum = 80.0%

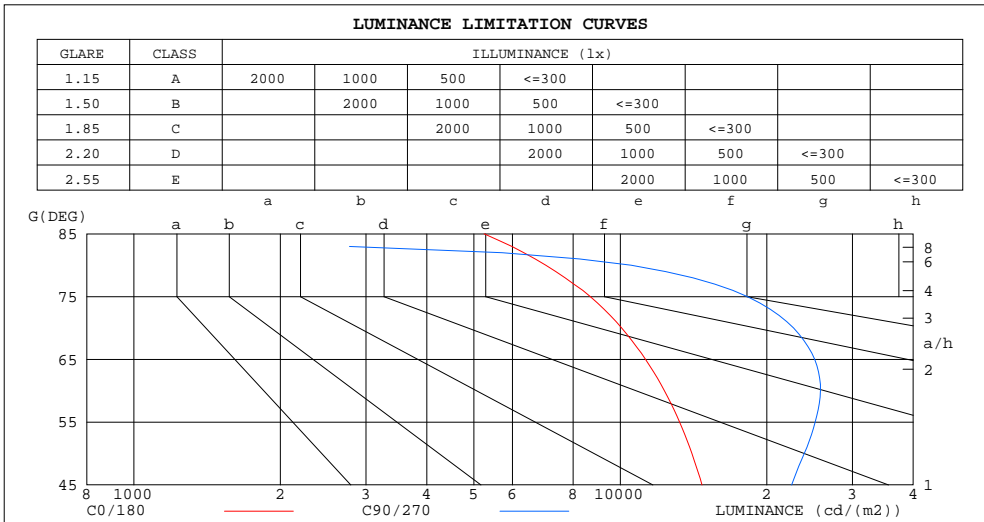
%lamp = 80.0%

C Range: 0 - 360DEG  
C Interval: 15.0DEG  
Test Speed: HIGH  
Temperature:25.3DEG  
Operators:Myles  
Test Date:2018-12-04

$\gamma$  Range: 0 - 90DEG  
 $\gamma$  Interval: 1.0DEG  
Test System:EVERFINE GO-2000B\_V1 SYSTEM V2.0.362  
Humidity:56%  
Test Distance:5.850m [K=1.0000]  
Remarks:

**LUMINANCE LIMITATION CURVES**

Test:U:43.00V I:0.3500A P:15.05W PF:1.000 Freq:0Hz Lamp Flux:1275.08x1 lm		
NAME: FL600-WW600-16W-830	TYPE:Linear Light	SERIAL No.:
SPEC.:3000K	DIM.: L600mm*W50mm*H80mm	
MFR.: NEKO LIGHTING AG		



LUMINANCE cd/(m2)		
G(DEG)	C0/180	C90/270
85	5248	104
80	7027	10522
75	8671	18238
70	10060	22696
65	11267	25083
60	12320	25783
55	13240	25151
50	14031	23880
45	14718	22504

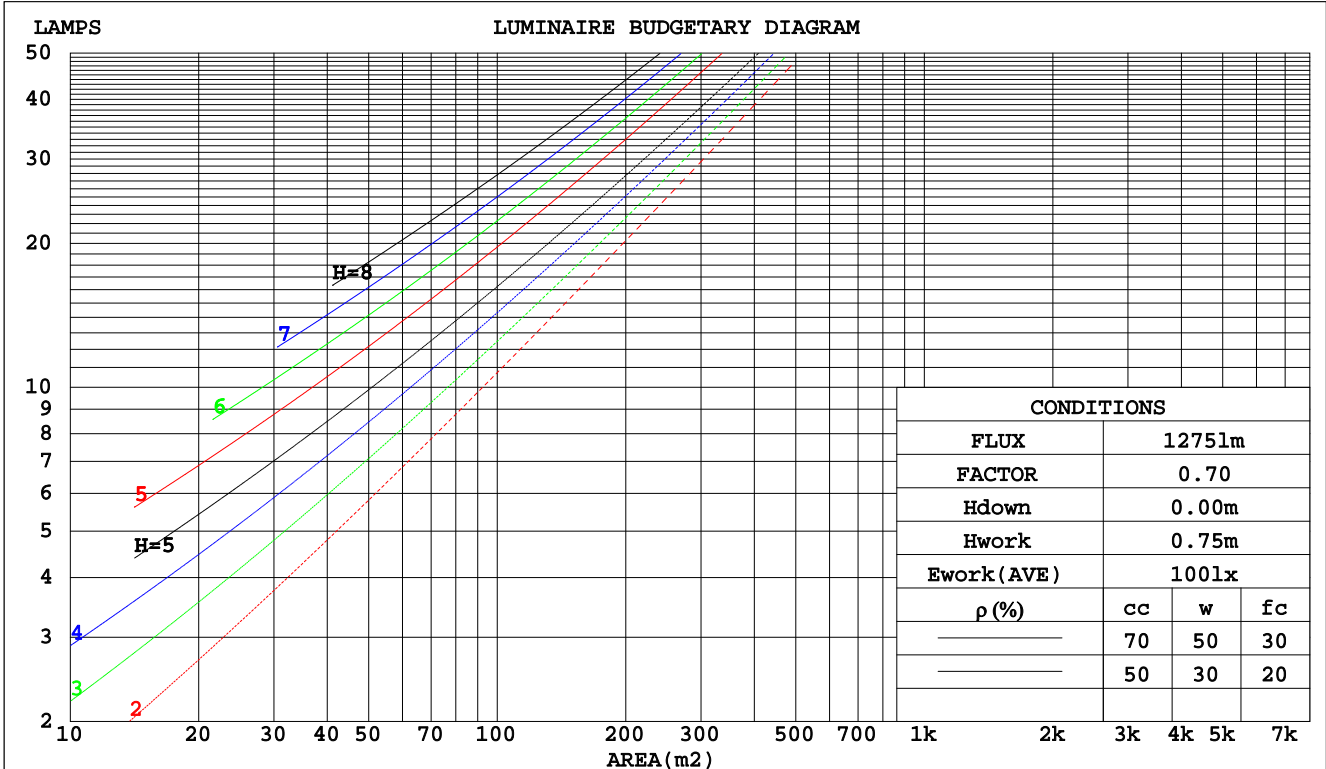
C Range: 0 - 360DEG  
 C Interval: 15.0DEG  
 Test Speed: HIGH  
 Temperature:25.3DEG  
 Operators:Myles  
 Test Date:2018-12-04

γ Range: 0 - 90DEG  
 γ Interval: 1.0DEG  
 Test System:EVERFINE GO-2000B\_V1 SYSTEM V2.0.362  
 Humidity:56%  
 Test Distance:5.850m [K=1.0000]  
 Remarks:

**CU AND LUMINAIRE BUDGETARY ESTIMATE DIAGRAM**

Test:U:43.00V I:0.3500A P:15.05W PF:1.000 Freq:0Hz Lamp Flux:1275.08x1 lm		
NAME: FL600-WW600-16W-830	TYPE:Linear Light	SERIAL No.:
SPEC.:3000K	DIM.: L600mm*W50mm*H80mm	
MFR.: NEKO LIGHTING AG		

pcc	80%			70%			50%			30%			10%			0
	50%	30%	10%	50%	30%	10%	50%	30%	10%	50%	30%	10%	50%	30%	10%	0
pw																0
pfc																0
RCR	RCR:Room Cavity Ratio      Coefficients of Utilization(CU)															
0.0	1.19	1.19	1.19	1.16	1.16	1.16	1.11	1.11	1.11	1.06	1.06	1.06	1.02	1.02	1.02	1.00
1.0	1.05	1.00	.97	1.02	.99	.95	.98	.95	.92	.94	.92	.89	.91	.89	.87	.85
2.0	.91	.85	.79	.90	.83	.78	.86	.81	.76	.83	.79	.75	.80	.76	.73	.71
3.0	.81	.73	.66	.79	.72	.66	.76	.70	.64	.73	.68	.63	.71	.66	.62	.60
4.0	.72	.63	.56	.70	.62	.56	.68	.61	.55	.66	.59	.55	.63	.58	.54	.52
5.0	.64	.55	.49	.63	.55	.49	.61	.54	.48	.59	.53	.48	.57	.52	.47	.45
6.0	.58	.49	.43	.57	.49	.43	.55	.48	.42	.54	.47	.42	.52	.46	.42	.40
7.0	.53	.44	.38	.52	.44	.38	.50	.43	.38	.49	.42	.37	.48	.42	.37	.35
8.0	.48	.40	.34	.48	.40	.34	.46	.39	.34	.45	.39	.34	.44	.38	.34	.32
9.0	.45	.36	.31	.44	.36	.31	.43	.36	.31	.42	.35	.31	.41	.35	.30	.29
10.0	.41	.33	.28	.41	.33	.28	.40	.33	.28	.39	.32	.28	.38	.32	.28	.26



C Range: 0 - 360DEG  
 C Interval: 15.0DEG  
 Test Speed: HIGH  
 Temperature: 25.3DEG  
 Operators: Myles  
 Test Date: 2018-12-04

γ Range: 0 - 90DEG  
 γ Interval: 1.0DEG  
 Test System: EVERFINE GO-2000B\_V1 SYSTEM V2.0.362  
 Humidity: 56%  
 Test Distance: 5.850m [K=1.0000]  
 Remarks:

WEC AND CCEC

Test:U:43.00V I:0.3500A P:15.05W PF:1.000 Freq:0Hz Lamp Flux:1275.08x1 lm		
NAME: FL600-WW600-16W-830	TYPE:Linear Light	SERIAL No.:
SPEC.:3000K	DIM.: L600mm*W50mm*H80mm	
MFR.: NEKO LIGHTING AG		

ρcc	80%			70%			50%			30%			10%			0
ρw	50%	30%	10%	50%	30%	10%	50%	30%	10%	50%	30%	10%	50%	30%	10%	0
ρfc	20%			20%			20%			20%			20%			0
RCR	RCR:Room Cavity Ratio						Wall Exitance Coefficients(WEC)									
0.0																
1.0	.296	.168	.053	.289	.165	.052	.276	.158	.051	.264	.152	.049	.252	.146	.047	
2.0	.282	.154	.047	.276	.152	.047	.264	.147	.046	.253	.142	.044	.243	.138	.043	
3.0	.262	.139	.042	.257	.137	.041	.246	.134	.041	.237	.130	.040	.228	.126	.039	
4.0	.243	.126	.037	.238	.124	.037	.229	.121	.036	.220	.118	.036	.212	.115	.035	
5.0	.225	.114	.033	.220	.113	.033	.212	.111	.033	.205	.108	.032	.198	.106	.032	
6.0	.209	.105	.030	.205	.103	.030	.198	.101	.029	.191	.099	.029	.185	.097	.029	
7.0	.194	.096	.027	.191	.095	.027	.185	.093	.027	.179	.092	.027	.173	.090	.026	
8.0	.182	.089	.025	.179	.088	.025	.173	.086	.025	.168	.085	.024	.162	.083	.024	
9.0	.170	.082	.023	.168	.082	.023	.163	.080	.023	.158	.079	.023	.153	.078	.022	
10.0	.160	.077	.021	.158	.076	.021	.153	.075	.021	.149	.074	.021	.145	.073	.021	

ρcc	80%			70%			50%			30%			10%			0
ρw	50%	30%	10%	50%	30%	10%	50%	30%	10%	50%	30%	10%	50%	30%	10%	0
ρfc	20%			20%			20%			20%			20%			0
RCR	RCR:Room Cavity Ratio						Ceiling Cavity Exitance Coefficients(CCEC)									
0.0	.190	.190	.190	.163	.163	.163	.111	.111	.111	.064	.064	.064	.020	.020	.020	
1.0	.179	.156	.135	.153	.134	.117	.105	.092	.081	.060	.053	.047	.019	.017	.015	
2.0	.171	.132	.099	.146	.114	.086	.100	.079	.060	.058	.046	.035	.019	.015	.011	
3.0	.163	.114	.075	.140	.099	.065	.096	.068	.046	.055	.040	.027	.018	.013	.009	
4.0	.155	.101	.059	.133	.087	.052	.092	.061	.036	.053	.036	.021	.017	.012	.007	
5.0	.148	.090	.048	.127	.078	.042	.087	.055	.030	.051	.032	.018	.016	.010	.006	
6.0	.141	.082	.040	.121	.071	.035	.083	.050	.025	.048	.029	.015	.016	.010	.005	
7.0	.134	.075	.034	.115	.065	.029	.079	.046	.021	.046	.027	.012	.015	.009	.004	
8.0	.127	.069	.029	.110	.060	.025	.076	.042	.018	.044	.025	.011	.014	.008	.004	
9.0	.121	.064	.026	.104	.056	.022	.072	.039	.016	.042	.023	.009	.014	.008	.003	
10.0	.116	.060	.023	.100	.052	.020	.069	.037	.014	.040	.022	.008	.013	.007	.003	

C Range: 0 - 360DEG  
 C Interval: 15.0DEG  
 Test Speed: HIGH  
 Temperature:25.3DEG  
 Operators:Myles  
 Test Date:2018-12-04

γ Range: 0 - 90DEG  
 γ Interval: 1.0DEG  
 Test System:EVERFINE GO-2000B\_V1 SYSTEM V2.0.362  
 Humidity:56%  
 Test Distance:5.850m [K=1.0000]  
 Remarks:

UGR(Unified Glare Rating) Table

Test:U:43.00V I:0.3500A P:15.05W PF:1.000 Freq:0Hz Lamp Flux:1275.08x1 lm		
NAME: FL600-WW600-16W-830	TYPE:Linear Light	SERIAL No.:
SPEC.:3000K	DIM.: L600mm*W50mm*H80mm	
MFR.: NEKO LIGHTING AG		

ceiling/cavity	0.7	0.7	0.5	0.5	0.3	0.7	0.7	0.5	0.5	0.3
walls	0.5	0.3	0.5	0.3	0.3	0.5	0.3	0.5	0.3	0.3
working plane	0.2	0.2	0.2	0.2	0.2	0.2	0.2	0.2	0.2	0.2
Room dimensions	Viewed crosswise					Viewed endwise				
x = 2H y = 2H	23.1	24.6	23.4	24.8	25.0	25.5	27.0	25.8	27.2	27.4
3H	24.5	25.9	24.8	26.1	26.4	27.2	28.6	27.5	28.8	29.1
4H	25.1	26.4	25.4	26.6	26.9	27.8	29.1	28.1	29.3	29.6
6H	25.4	26.7	25.8	26.9	27.2	28.0	29.2	28.3	29.5	29.7
8H	25.5	26.7	25.8	27.0	27.3	27.9	29.1	28.3	29.4	29.7
12H	25.5	26.7	25.9	27.0	27.3	27.9	29.0	28.2	29.3	29.6
4H 2H	24.4	25.7	24.8	26.0	26.3	26.1	27.4	26.4	27.7	27.9
3H	26.2	27.3	26.5	27.6	27.9	28.0	29.2	28.4	29.5	29.8
4H	26.9	28.0	27.3	28.3	28.6	28.7	29.7	29.0	30.0	30.4
6H	27.5	28.4	27.9	28.7	29.1	28.9	29.9	29.3	30.2	30.6
8H	27.6	28.5	28.0	28.8	29.2	28.9	29.8	29.3	30.2	30.5
12H	27.7	28.5	28.1	28.8	29.2	28.9	29.7	29.3	30.1	30.5
8H 4H	27.4	28.3	27.9	28.7	29.1	28.9	29.8	29.3	30.1	30.5
6H	28.2	28.9	28.6	29.3	29.7	29.3	30.0	29.7	30.4	30.8
8H	28.4	29.1	28.9	29.5	29.9	29.3	29.9	29.7	30.3	30.8
12H	28.6	29.1	29.1	29.6	30.0	29.2	29.8	29.7	30.2	30.7
12H 4H	27.4	28.2	27.9	28.6	29.0	28.9	29.7	29.3	30.1	30.5
6H	28.2	28.8	28.7	29.3	29.7	29.3	29.9	29.8	30.4	30.8
8H	28.5	29.0	29.0	29.5	30.0	29.3	29.9	29.8	30.3	30.8
Variations with the observer position at spacings:										
S = 1.0H	+ 0.2 / - 0.2					+ 0.1 / - 0.2				
1.5H	+ 0.3 / - 0.5					+ 0.2 / - 0.3				
2.0H	+ 0.5 / - 0.9					+ 0.3 / - 0.6				

CIE Pub.117, 1275 lm Total Lamp Luminous Flux Correct (8log(F/F0) = 0.8)

C Range: 0 - 360DEG  
 C Interval: 15.0DEG  
 Test Speed: HIGH  
 Temperature:25.3DEG  
 Operators:Myles  
 Test Date:2018-12-04

γ Range: 0 - 90DEG  
 γ Interval: 1.0DEG  
 Test System:EVERFINE GO-2000B\_V1 SYSTEM V2.0.362  
 Humidity:56%  
 Test Distance:5.850m [K=1.0000]  
 Remarks:

UTILIZATION FACTORS TABLE

Test:U:43.00V I:0.3500A P:15.05W PF:1.000 Freq:0Hz Lamp Flux:1275.08x1 lm		
NAME: FL600-WW600-16W-830	TYPE:Linear Light	SERIAL No.:
SPEC.:3000K	DIM.: L600mm*W50mm*H80mm	
MFR.: NEKO LIGHTING AG		

REFLECTANCE										
Ceiling	0.8	0.8	0.8	0.7	0.7	0.7	0.5	0.5	0.5	0
Walls	0.7	0.5	0.3	0.7	0.5	0.3	0.7	0.5	0.3	0
Working plane	0.2	0.2	0.2	0.2	0.2	0.2	0.2	0.2	0.2	0
ROOM INDEX	UTILIZATION FACTORS(PERCENT) $k(RI) \times RCR = 5$									
k = 0.60	59	48	41	59	48	41	57	47	41	35
0.80	69	58	51	68	58	51	66	57	50	44
1.00	77	67	60	76	66	59	74	67	59	52
1.25	84	74	67	83	73	67	80	72	66	59
1.50	89	80	73	88	79	72	85	77	71	64
2.00	96	88	81	94	86	81	91	84	79	71
2.50	100	92	86	98	91	86	94	88	84	76
3.00	103	96	91	101	95	90	97	92	88	80
4.00	107	101	97	105	100	96	100	96	93	84
5.00	109	105	101	107	103	99	102	99	96	87
ROOM INDEX	UF(total)									Direct
According to DIN EN 13032-2 2004			Suspended				SHRNOM = 1.25			

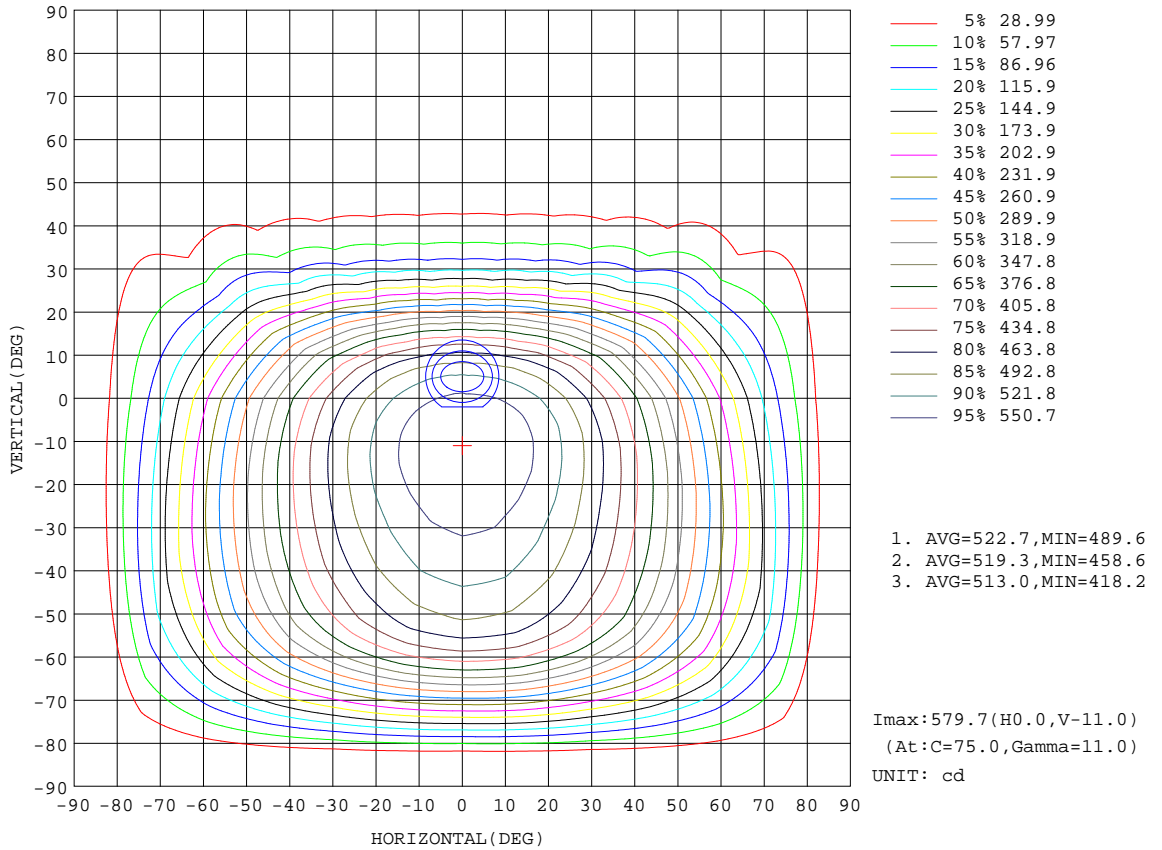
C Range: 0 - 360DEG  
 C Interval: 15.0DEG  
 Test Speed: HIGH  
 Temperature:25.3DEG  
 Operators:Myles  
 Test Date:2018-12-04

$\gamma$  Range: 0 - 90DEG  
 $\gamma$  Interval: 1.0DEG  
 Test System:EVERFINE GO-2000B\_V1 SYSTEM V2.0.362  
 Humidity:56%  
 Test Distance:5.850m [K=1.0000]  
 Remarks:



**ISOCANDELA DIAGRAM**

Test:U:43.00V I:0.3500A P:15.05W PF:1.000 Freq:0Hz Lamp Flux:1275.08x1 lm		
NAME: FL600-WW600-16W-830	TYPE:Linear Light	SERIAL No.:
SPEC.:3000K	DIM.: L600mm*W50mm*H80mm	
MFR.: NEKO LIGHTING AG		



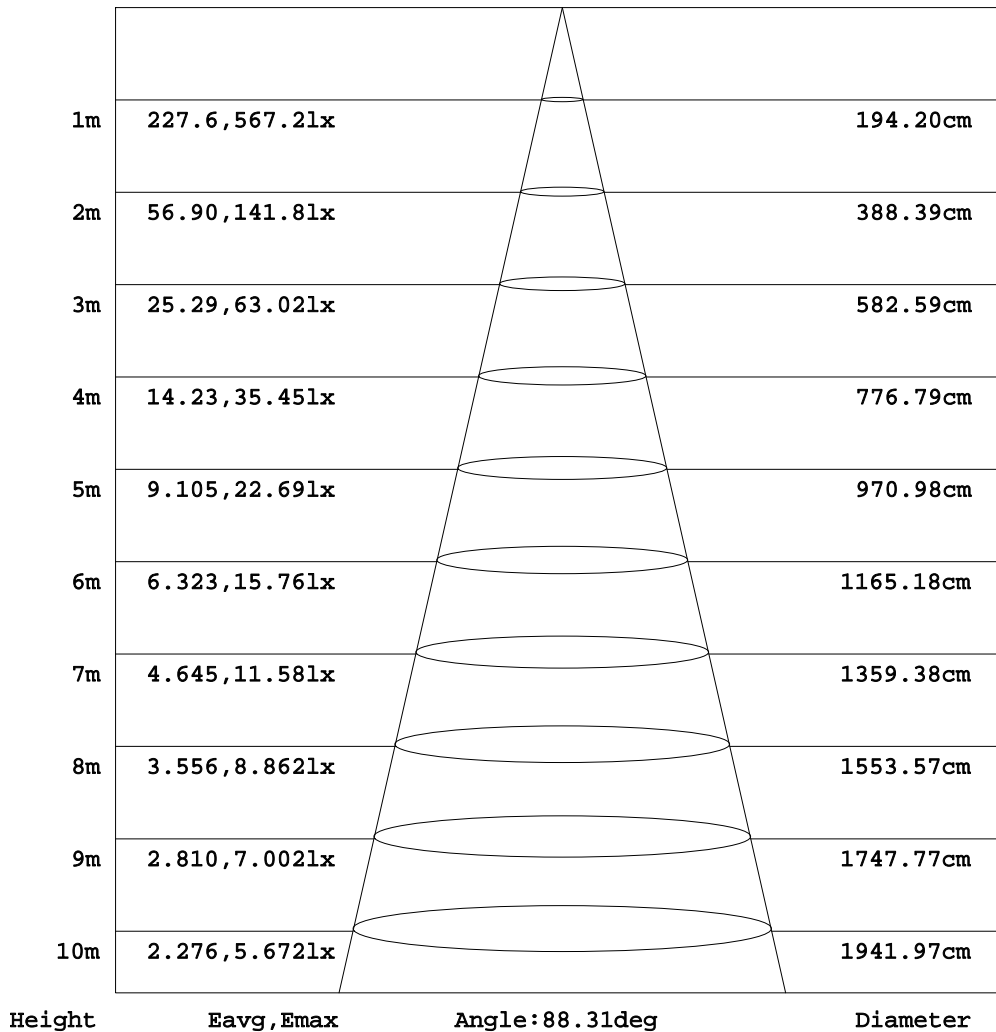
C Range: 0 - 360DEG  
C Interval: 15.0DEG  
Test Speed: HIGH  
Temperature: 25.3DEG  
Operators: Myles  
Test Date: 2018-12-04

γ Range: 0 - 90DEG  
γ Interval: 1.0DEG  
Test System: EVERFINE GO-2000B\_V1 SYSTEM V2.0.362  
Humidity: 56%  
Test Distance: 5.850m [K=1.0000]  
Remarks:

**AAI Figure**

Test:U:43.00V I:0.3500A P:15.05W PF:1.000 Freq:0Hz Lamp Flux:1275.08x1 lm		
NAME: FL600-WW600-16W-830	TYPE:Linear Light	SERIAL No.:
SPEC.:3000K	DIM.: L600mm*W50mm*H80mm	
MFR.: NEKO LIGHTING AG		

Flux out:715.1 lm



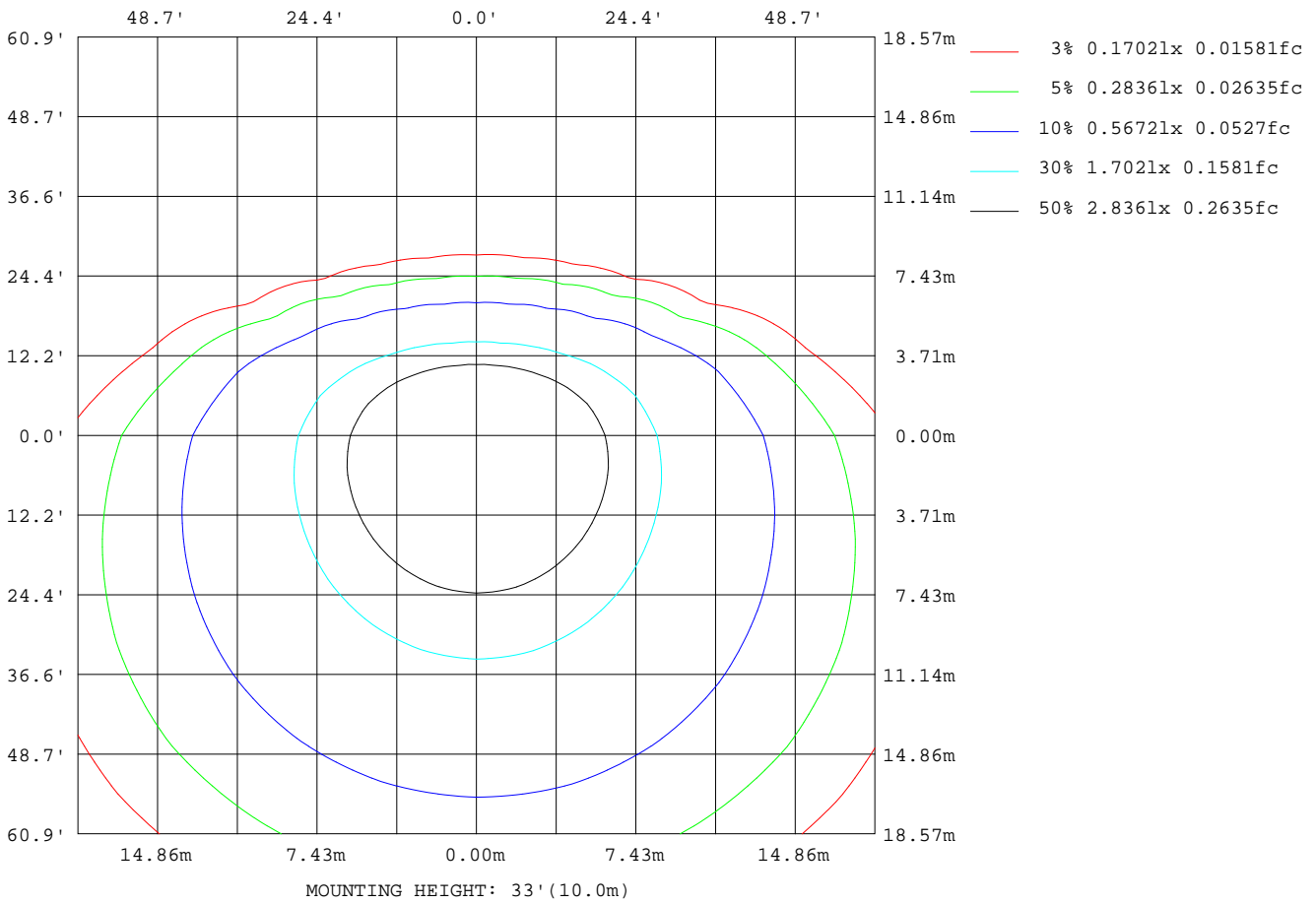
Note:The Curves indicate the illuminated area and the average illumination when the luminaire is at different distance.

C Range: 0 - 360DEG  
C Interval: 15.0DEG  
Test Speed: HIGH  
Temperature:25.3DEG  
Operators:Myles  
Test Date:2018-12-04

γ Range: 0 - 90DEG  
γ Interval: 1.0DEG  
Test System:EVERFINE GO-2000B\_V1 SYSTEM V2.0.362  
Humidity:56%  
Test Distance:5.850m [K=1.0000]  
Remarks:

**ISOLUX DIAGRAM**

Test:U:43.00V I:0.3500A P:15.05W PF:1.000 Freq:0Hz Lamp Flux:1275.08x1 lm		
NAME: FL600-WW600-16W-830	TYPE:Linear Light	SERIAL No.:
SPEC.:3000K	DIM.: L600mm*W50mm*H80mm	
MFR.: NEKO LIGHTING AG		



C Range: 0 - 360DEG  
 C Interval: 15.0DEG  
 Test Speed: HIGH  
 Temperature: 25.3DEG  
 Operators: Myles  
 Test Date: 2018-12-04

γ Range: 0 - 90DEG  
 γ Interval: 1.0DEG  
 Test System: EVERFINE GO-2000B\_V1 SYSTEM V2.0.362  
 Humidity: 56%  
 Test Distance: 5.850m [K=1.0000]  
 Remarks:

LED Avg.L Report

Test:U:43.00V I:0.3500A P:15.05W PF:1.000 Freq:0Hz Lamp Flux:1275.08x1 lm		
NAME: FL600-WW600-16W-830	TYPE:Linear Light	SERIAL No.:
SPEC.:3000K	DIM.: L600mm*W50mm*H80mm	
MFR.: NEKO LIGHTING AG		

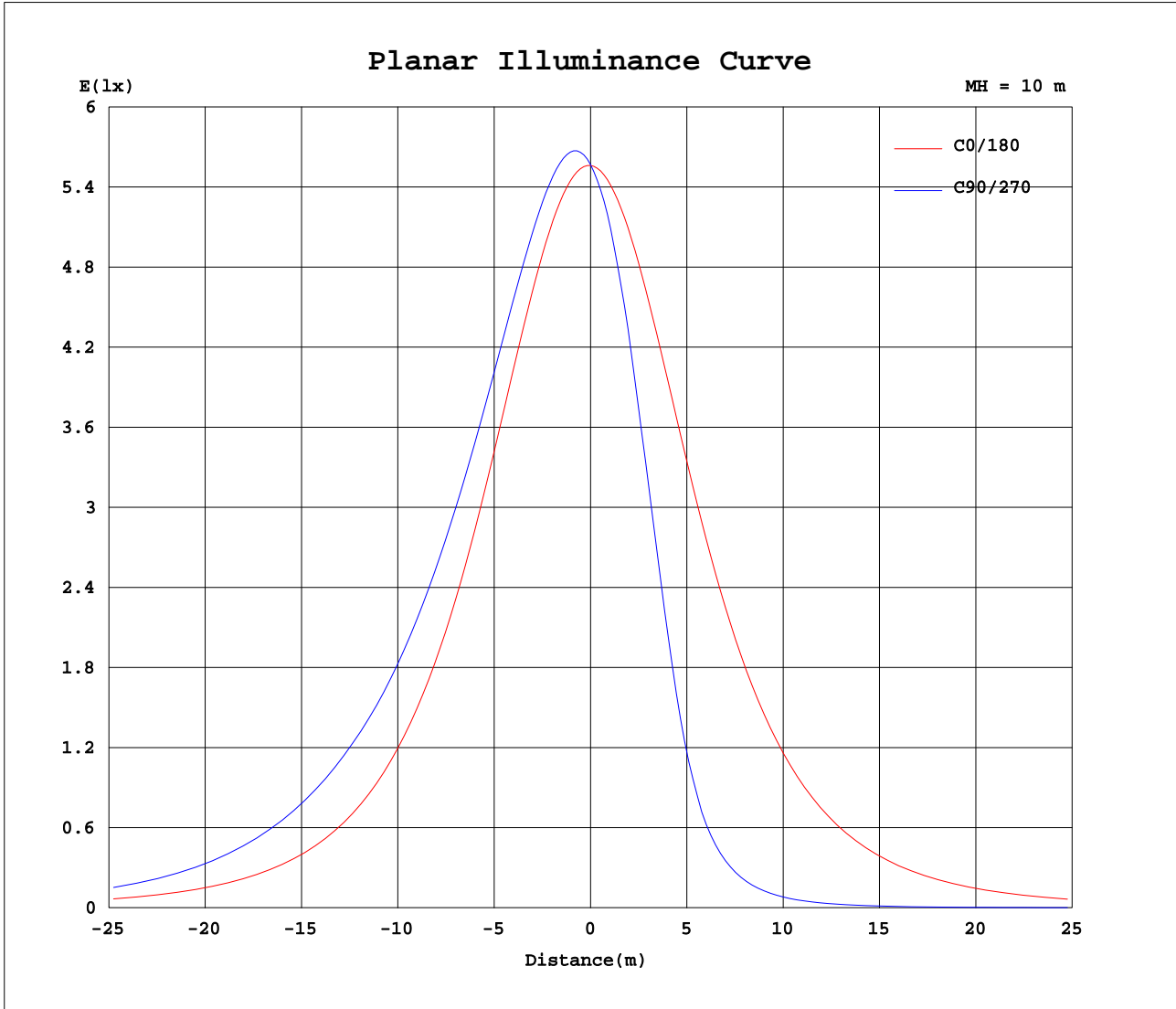
AvgL	cd/m2
L_0~180(65)av	11099
L_0~180(75)av	8521
L_0~180(85)av	5193
L_90~270(65)av	12668
L_90~270(75)av	9207
L_90~270(85)av	158
L_45(65)av	11879
L_45(75)av	10325
L_45(85)av	1488

Standard: GB/T 29293-2012

C Range: 0 - 360DEG  
C Interval: 15.0DEG  
Test Speed: HIGH  
Temperature:25.3DEG  
Operators:Myles  
Test Date:2018-12-04

γ Range: 0 - 90DEG  
γ Interval: 1.0DEG  
Test System:EVERFINE GO-2000B\_V1 SYSTEM V2.0.362  
Humidity:56%  
Test Distance:5.850m [K=1.0000]  
Remarks:

Planar Illuminance Curve



C Range: 0 - 360DEG  
 C Interval: 15.0DEG  
 Test Speed: HIGH  
 Temperature: 25.3DEG  
 Operators: Myles  
 Test Date: 2018-12-04

$\gamma$  Range: 0 - 90DEG  
 $\gamma$  Interval: 1.0DEG  
 Test System: EVERFINE GO-2000B\_V1 SYSTEM V2.0.362  
 Humidity: 56%  
 Test Distance: 5.850m [K=1.0000]  
 Remarks:

LUMINOUS DISTRIBUTION INTENSITY DATA

Test:U:43.00V I:0.3500A P:15.05W PF:1.000 Freq:0Hz Lamp Flux:1275.08x1 lm		
NAME: FL600-WW600-16W-830	TYPE:Linear Light	SERIAL No.:
SPEC.:3000K	DIM.: L600mm*W50mm*H80mm	
MFR.: NEKO LIGHTING AG		

Table--1 UNIT: cd

C (DEG) \ γ (DEG)	0	15	30	45	60	75	90	105	120	135	150	165	180	195	210	225	240	255	270
0	556	556	556	556	556	556	556	556	556	556	556	556	556	556	556	556	556	556	556
5	555	561	565	569	571	573	573	573	571	568	563	558	552	546	540	534	530	526	525
10	547	558	566	573	576	579	579	579	575	570	562	553	542	528	514	497	484	474	472
15	533	549	560	569	573	578	577	577	571	565	555	542	525	504	477	447	419	397	393
20	513	534	547	559	566	571	571	570	563	554	541	525	504	474	434	381	339	304	296
25	487	513	529	544	554	562	563	561	551	539	522	503	477	437	377	306	245	201	191
30	456	486	507	527	541	552	554	550	536	520	499	476	445	394	317	223	155	119	111
35	420	456	481	507	527	542	544	538	521	499	472	445	409	348	250	145	91.9	69.2	64.2
40	381	422	453	486	511	529	532	525	504	477	444	411	370	297	180	88.5	54.5	40.8	38.0
45	338	385	424	463	493	513	517	508	484	453	413	374	328	243	117	53.0	32.6	24.6	23.0
50	293	346	393	437	470	494	498	488	460	426	382	336	284	189	71.3	31.6	19.8	15.2	14.2
55	247	307	360	408	445	466	468	459	434	396	349	297	239	134	41.7	19.0	12.3	9.57	9.01
60	200	267	325	375	402	419	419	411	391	363	314	257	194	83.5	23.5	11.5	7.77	6.14	5.77
65	155	227	286	325	340	348	344	340	329	313	275	218	150	44.5	13.1	7.09	4.99	4.01	3.78
70	112	187	240	258	257	258	252	252	248	247	230	179	108	21.0	7.33	4.44	3.25	2.63	2.46
75	72.9	146	176	175	164	160	153	155	158	167	167	139	70.4	8.97	4.16	2.78	2.10	1.74	1.61
80	39.7	98.9	100	87.2	71.7	64.3	59.3	62.3	68.8	82.1	93.6	92.6	38.4	3.88	2.32	1.70	1.33	1.11	1.02
85	14.9	38.8	24.1	8.46	0.56	0.32	0.30	0.32	0.52	6.52	20.7	34.4	14.6	1.57	1.16	0.94	0.76	0.67	0.60
90	0.33	0.24	0.19	0.17	0.15	0.11	0.10	0.11	0.17	0.17	0.21	0.28	0.30	0.44	0.49	0.49	0.45	0.41	0.39

C Range: 0 - 360DEG	γ Range: 0 - 90DEG
C Interval: 15.0DEG	γ Interval: 1.0DEG
Test Speed: HIGH	Test System:EVERFINE GO-2000B_V1 SYSTEM V2.0.362
Temperature:25.3DEG	Humidity:56%
Operators:Myles	Test Distance:5.850m [K=1.0000]
Test Date:2018-12-04	Remarks:

LUMINOUS DISTRIBUTION INTENSITY DATA

Test:U:43.00V I:0.3500A P:15.05W PF:1.000 Freq:0Hz Lamp Flux:1275.08x1 lm		
NAME: FL600-WW600-16W-830	TYPE:Linear Light	SERIAL No.:
SPEC.:3000K	DIM.: L600mm*W50mm*H80mm	
MFR.: NEKO LIGHTING AG		

Table--2

UNIT: cd

C(DEG) \ γ (DEG)	285	300	315	330	345															
0	556	556	556	556	556															
5	526	530	535	541	548															
10	473	485	500	518	533															
15	398	420	450	483	511															
20	305	340	385	439	483															
25	202	246	310	383	447															
30	119	157	226	323	404															
35	69.6	92.6	147	256	358															
40	41.1	55.1	90.1	186	306															
45	24.8	33.1	54.2	121	253															
50	15.3	20.2	32.4	74.0	197															
55	9.68	12.5	19.5	43.4	142															
60	6.21	7.93	11.8	24.6	88.9															
65	4.04	5.08	7.32	13.7	47.8															
70	2.65	3.29	4.57	7.67	22.6															
75	1.74	2.12	2.83	4.31	9.71															
80	1.11	1.33	1.72	2.37	4.14															
85	0.66	0.75	0.93	1.18	1.65															
90	0.38	0.42	0.45	0.45	0.43															

C Range: 0 - 360DEG  
C Interval: 15.0DEG  
Test Speed: HIGH  
Temperature:25.3DEG  
Operators:Myles  
Test Date:2018-12-04

γ Range: 0 - 90DEG  
γ Interval: 1.0DEG  
Test System:EVERFINE GO-2000B\_V1 SYSTEM V2.0.362  
Humidity:56%  
Test Distance:5.850m [K=1.0000]  
Remarks: