

LED FUSION Linear Series FL600-WW600-13W-840



Light Output Ratio:	100.0%	
Luminaire Power:	13.66 W	
SHR Nominal:	1.00	Calculated using the TM5
SHR Maximum:	1.15	fine grid method.

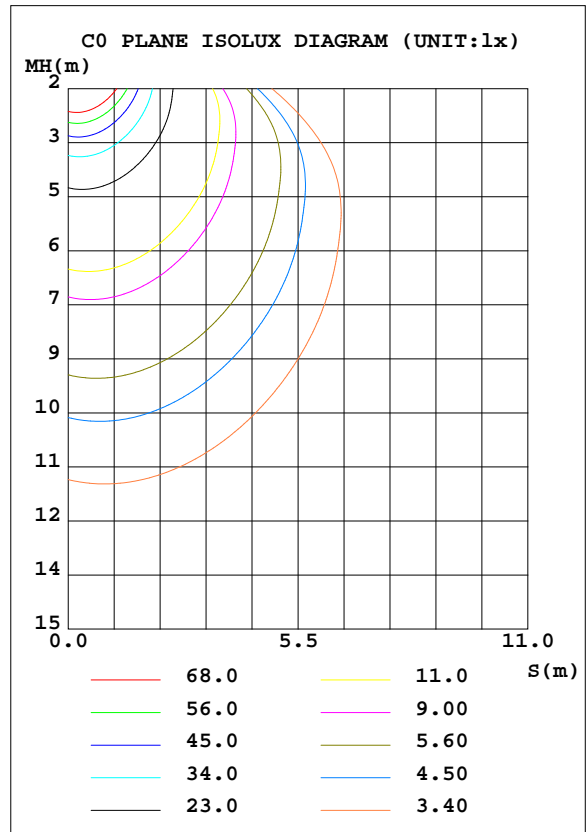
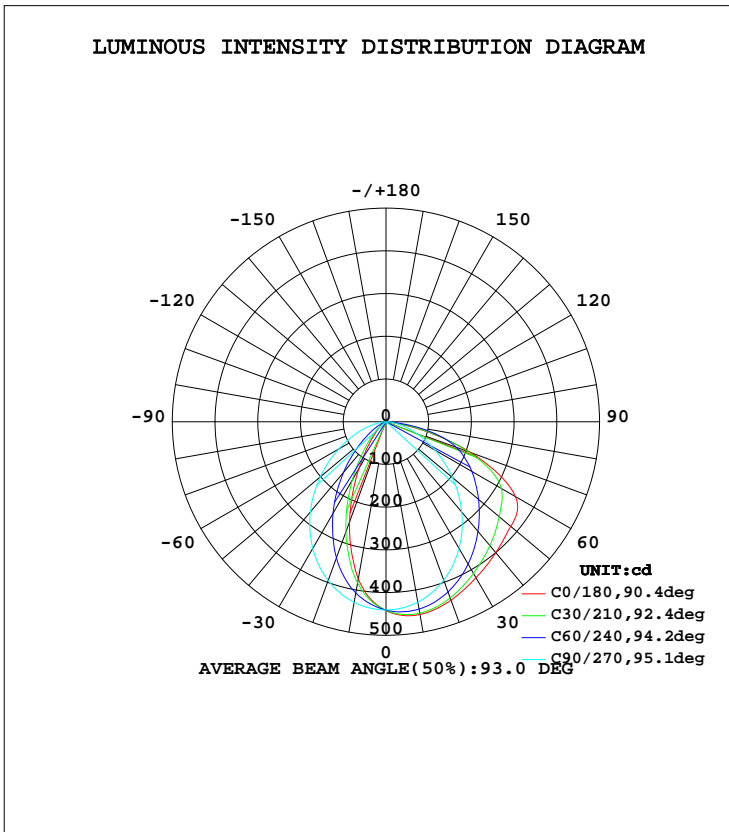
C Range: 0 - 360DEG  
C Interval: 15.0DEG  
Test Speed: HIGH  
Temperature: 25.3DEG  
Operators: Meng Yongjian  
Test Date: 2017-05-12

$\gamma$  Range: 0 - 90DEG  
 $\gamma$  Interval: 1.0DEG  
Test System: EVERFINE GO-2000B\_V1 SYSTEM V2.0.288  
Humidity: 52%  
Test Distance: 5.850m [K=1.0000]  
Remarks:

**LUMINAIRE PHOTOMETRIC TEST REPORT**

Test:U:220.8V I:0.0709A P:13.66W PF:0.8851 Lamp Flux:984.605x1 lm		
NAME: FL600-WW600-13W-840	TYPE:Linear Light	SERIAL No.:
SPEC.:4000K	DIM.: L600mm*W50mm*H95mm	
MFR.: NEKO LIGHTING AG		

DATA OF LAMP		PHOTOMETRIC DATA				Eff: 72.06 lm/W
MODEL	SAMSUNG-4000K	I <sub>max</sub> (cd)	458.3	S/MH(C0/180)	0.69	
NOMINAL POWER(W)	13	LOR(%)	100.0	S/MH(C90/270)	1.17	
RATED VOLTAGE(V)	220	TOTAL FLUX(lm)	984.61	η UP, DN(C0-180)	0.0, 53.2	
NOMINAL FLUX(lm)	984.605	CIE CLASS	DIRECT	η UP, DN(C180-360)	0.0, 46.8	
LAMPS INSIDE	1	η up(%)	0.0	CIBSE SHR NOM	1.00	
TEST VOLTAGE(V)	220	η down(%)	100.0	CIBSE SHR MAX	1.15	



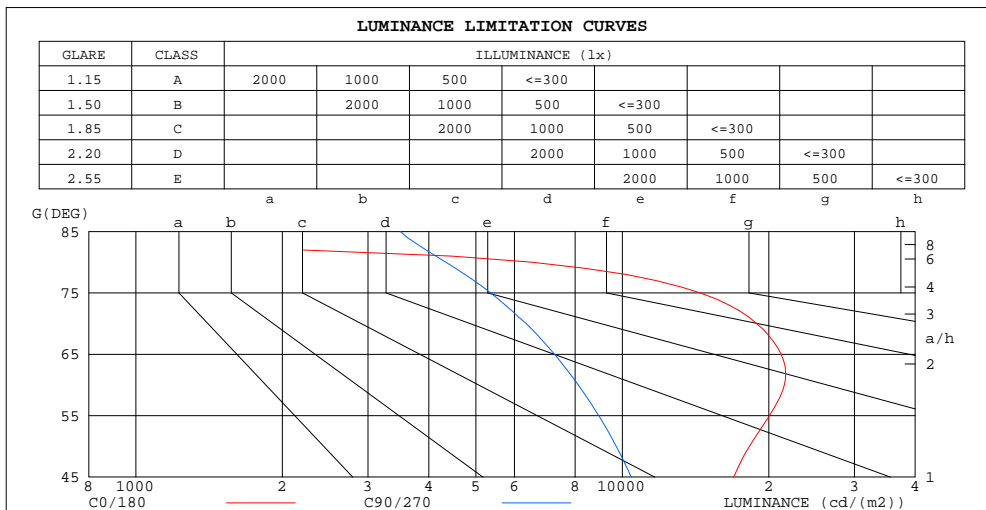
C Range: 0 - 360DEG  
 C Interval: 15.0DEG  
 Test Speed: HIGH  
 Temperature:25.3DEG  
 Operators:Meng Yongjian  
 Test Date:2017-05-12

γ Range: 0 - 90DEG  
 γ Interval: 1.0DEG  
 Test System:EVERFINE GO-2000B\_V1 SYSTEM V2.0.288  
 Humidity:52%  
 Test Distance:5.850m [K=1.0000]  
 Remarks:

**ZONAL FLUX DIAGRAM  
AND LUMINANCE LIMITATION CURVES**

**ZONAL FLUX DIAGRAM:**

$\gamma$	C0	C45	C90	C135	C180	C225	C270	C315	$\gamma$	$\Phi$ zone	$\Phi$ total	$\Phi$ lum,lamp
10	458.2	450.9	428.7	394.9	373.5	393.7	429.3	450.5	0- 10	41.23	41.23	4.19,4.19
20	444.5	432.9	394.8	304.3	249.6	302.0	395.7	431.7	10- 20	112.0	153.3	15.6,15.6
30	421.6	398.4	342.1	198.9	127.6	195.6	342.7	396.5	20- 30	154.9	308.1	31.3,31.3
40	400.0	357.9	275.9	103.5	50.18	100.7	275.6	355.8	30- 40	169.1	477.2	48.5,48.5
50	381.3	315.7	203.0	42.83	17.73	40.60	201.0	313.7	40- 50	164.4	641.6	65.2,65.2
60	349.8	271.3	131.9	15.23	6.408	13.87	127.7	269.1	50- 60	150.2	791.8	80.4,80.4
70	210.1	196.8	70.55	5.219	2.451	4.554	65.97	191.3	60- 70	120.7	912.5	92.7,92.7
80	36.79	60.26	24.47	1.750	0.9107	1.541	20.39	53.59	70- 80	63.59	976.1	99.1,99.1
90	0.0831	0.8527	1.218	0.4198	0.2864	0.4220	0.3979	0.2208	80- 90	8.522	984.6	100,100
100									90-100			
110									100-110			
120									110-120			
130									120-130			
140									130-140			
150									140-150			
160									150-160			
170									160-170			
180									170-180			
DEG	LUMINOUS INTENSITY:cd									UNIT:lm		



LUMINANCE cd/(m2)		
G(DEG)	C0/180	C90/270
85	66	3495
80	6518	4336
75	14464	5360
70	18904	6347
65	21212	7255
60	21528	8118
55	20058	8945
50	18250	9718
45	16950	10430

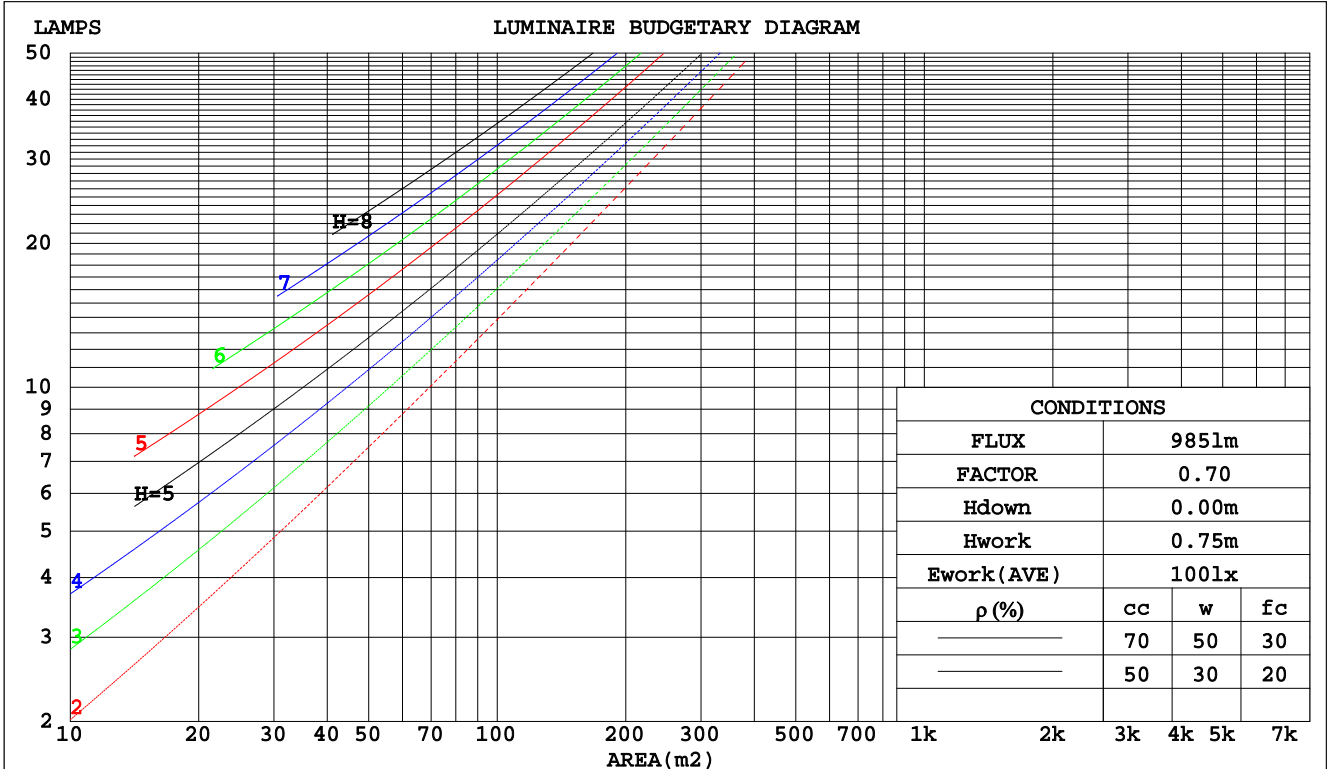
C Range: 0 - 360DEG  
C Interval: 15.0DEG  
Test Speed: HIGH  
Temperature:25.3DEG  
Operators:Meng Yongjian  
Test Date:2017-05-12

$\gamma$  Range: 0 - 90DEG  
 $\gamma$  Interval: 1.0DEG  
Test System:EVERFINE GO-2000B\_V1 SYSTEM V2.0.288  
Humidity:52%  
Test Distance:5.850m [K=1.0000]  
Remarks:

**CU AND LUMINAIRE BUDGETARY ESTIMATE DIAGRAM**

Test:U:220.8V I:0.0709A P:13.66W PF:0.8851 Lamp Flux:984.605x1 lm		
NAME: FL600-WW600-13W-840	TYPE:Linear Light	SERIAL No.:
SPEC.:4000K	DIM.: L600mm*W50mm*H95mm	
MFR.: NEKO LIGHTING AG		

pcc	80%			70%			50%			30%			10%			0
pw	50%	30%	10%	50%	30%	10%	50%	30%	10%	50%	30%	10%	50%	30%	10%	0
pfc	20%			20%			20%			20%			20%			0
RCR	RCR:Room Cavity Ratio						Coefficients of Utilization(CU)									
0.0	1.19	1.19	1.19	1.16	1.16	1.16	1.11	1.11	1.11	1.06	1.06	1.06	1.02	1.02	1.02	1.00
1.0	1.05	1.01	.97	1.03	.99	.96	.98	.95	.93	.94	.92	.90	.91	.89	.87	.85
2.0	.92	.85	.80	.90	.84	.79	.86	.81	.77	.83	.79	.75	.80	.77	.73	.71
3.0	.81	.73	.67	.79	.72	.66	.76	.70	.65	.74	.68	.64	.71	.67	.63	.61
4.0	.72	.63	.57	.71	.63	.57	.68	.61	.56	.66	.60	.55	.64	.59	.54	.52
5.0	.65	.56	.49	.64	.55	.49	.61	.54	.49	.59	.53	.48	.58	.52	.48	.45
6.0	.58	.50	.43	.57	.49	.43	.56	.48	.43	.54	.47	.42	.52	.47	.42	.40
7.0	.53	.45	.39	.52	.44	.39	.51	.44	.38	.49	.43	.38	.48	.42	.38	.36
8.0	.49	.40	.35	.48	.40	.35	.47	.40	.34	.46	.39	.34	.44	.38	.34	.32
9.0	.45	.37	.31	.44	.37	.31	.43	.36	.31	.42	.36	.31	.41	.35	.31	.29
10.0	.42	.34	.29	.41	.34	.29	.40	.33	.29	.39	.33	.28	.38	.32	.28	.27



C Range: 0 - 360DEG  
 C Interval: 15.0DEG  
 Test Speed: HIGH  
 Temperature: 25.3DEG  
 Operators: Meng Yongjian  
 Test Date: 2017-05-12

γ Range: 0 - 90DEG  
 γ Interval: 1.0DEG  
 Test System: EVERFINE GO-2000B\_V1 SYSTEM V2.0.288  
 Humidity: 52%  
 Test Distance: 5.850m [K=1.0000]  
 Remarks:

WEC AND CCEC

Test:U:220.8V I:0.0709A P:13.66W PF:0.8851 Lamp Flux:984.605x1 lm		
NAME: FL600-WW600-13W-840	TYPE:Linear Light	SERIAL No.:
SPEC.:4000K	DIM.: L600mm*W50mm*H95mm	
MFR.: NEKO LIGHTING AG		

ρcc	80%			70%			50%			30%			10%			0
ρw	50%	30%	10%	50%	30%	10%	50%	30%	10%	50%	30%	10%	50%	30%	10%	0
ρfc	20%			20%			20%			20%			20%			0
RCR	RCR:Room Cavity Ratio						Wall Exitance Coefficients(WEC)									
0.0																
1.0	.292	.166	.053	.285	.162	.052	.272	.156	.050	.260	.150	.048	.248	.144	.046	
2.0	.279	.153	.047	.273	.150	.046	.261	.145	.045	.250	.141	.044	.241	.136	.043	
3.0	.260	.138	.041	.254	.136	.041	.244	.132	.040	.235	.129	.039	.226	.125	.039	
4.0	.241	.125	.037	.236	.123	.036	.227	.120	.036	.218	.117	.035	.211	.114	.035	
5.0	.223	.114	.033	.219	.112	.033	.211	.110	.032	.203	.107	.032	.196	.105	.032	
6.0	.207	.104	.030	.204	.103	.030	.196	.101	.029	.190	.099	.029	.183	.097	.029	
7.0	.193	.096	.027	.190	.095	.027	.183	.093	.027	.177	.091	.026	.172	.089	.026	
8.0	.181	.088	.025	.178	.087	.025	.172	.086	.025	.167	.084	.024	.162	.083	.024	
9.0	.170	.082	.023	.167	.081	.023	.162	.080	.023	.157	.079	.023	.152	.077	.022	
10.0	.160	.077	.021	.157	.076	.021	.153	.075	.021	.148	.074	.021	.144	.072	.021	

ρcc	80%			70%			50%			30%			10%			0
ρw	50%	30%	10%	50%	30%	10%	50%	30%	10%	50%	30%	10%	50%	30%	10%	0
ρfc	20%			20%			20%			20%			20%			0
RCR	RCR:Room Cavity Ratio						Ceiling Cavity Exitance Coefficients(CCEC)									
0.0	.190	.190	.190	.163	.163	.163	.111	.111	.111	.064	.064	.064	.020	.020	.020	
1.0	.179	.156	.136	.153	.134	.117	.105	.092	.081	.060	.053	.047	.019	.017	.015	
2.0	.171	.132	.100	.146	.114	.086	.100	.079	.060	.058	.046	.035	.019	.015	.011	
3.0	.163	.114	.076	.139	.099	.066	.096	.068	.046	.055	.040	.027	.018	.013	.009	
4.0	.155	.101	.060	.133	.087	.052	.091	.061	.036	.053	.036	.022	.017	.012	.007	
5.0	.147	.090	.048	.126	.078	.042	.087	.055	.030	.050	.032	.018	.016	.010	.006	
6.0	.140	.082	.040	.120	.071	.035	.083	.050	.025	.048	.029	.015	.016	.010	.005	
7.0	.133	.075	.034	.115	.065	.030	.079	.046	.021	.046	.027	.012	.015	.009	.004	
8.0	.127	.069	.029	.109	.060	.026	.076	.042	.018	.044	.025	.011	.014	.008	.004	
9.0	.121	.064	.026	.104	.056	.022	.072	.039	.016	.042	.023	.010	.014	.008	.003	
10.0	.115	.060	.023	.099	.052	.020	.069	.037	.014	.040	.022	.008	.013	.007	.003	

C Range: 0 - 360DEG  
 C Interval: 15.0DEG  
 Test Speed: HIGH  
 Temperature:25.3DEG  
 Operators:Meng Yongjian  
 Test Date:2017-05-12

γ Range: 0 - 90DEG  
 γ Interval: 1.0DEG  
 Test System:EVERFINE GO-2000B\_V1 SYSTEM V2.0.288  
 Humidity:52%  
 Test Distance:5.850m [K=1.0000]  
 Remarks:

UGR(Unified Glare Rating) Table

Test:U:220.8V I:0.0709A P:13.66W PF:0.8851 Lamp Flux:984.605x1 lm		
NAME: FL600-WW600-13W-840	TYPE:Linear Light	SERIAL No.:
SPEC.:4000K	DIM.: L600mm*W50mm*H95mm	
MFR.: NEKO LIGHTING AG		

ceiling/cavity	0.7	0.7	0.5	0.5	0.3	0.7	0.7	0.5	0.5	0.3
walls	0.5	0.3	0.5	0.3	0.3	0.5	0.3	0.5	0.3	0.3
working plane	0.2	0.2	0.2	0.2	0.2	0.2	0.2	0.2	0.2	0.2
Room dimensions	Viewed crosswise					Viewed endwise				
x = 2H y = 2H	25.6	27.0	25.8	27.2	27.4	22.5	23.9	22.7	24.1	24.3
3H	27.5	28.8	27.8	29.1	29.3	23.8	25.2	24.1	25.4	25.6
4H	28.0	29.3	28.3	29.5	29.8	24.3	25.6	24.6	25.9	26.1
6H	28.1	29.3	28.4	29.6	29.9	24.6	25.8	25.0	26.1	26.4
8H	28.1	29.2	28.4	29.5	29.8	24.7	25.9	25.0	26.2	26.4
12H	28.0	29.1	28.4	29.4	29.7	24.7	25.8	25.1	26.1	26.4
4H 2H	26.1	27.4	26.4	27.7	27.9	23.9	25.2	24.3	25.5	25.7
3H	28.2	29.3	28.5	29.6	29.9	25.6	26.8	26.0	27.1	27.4
4H	28.8	29.8	29.2	30.2	30.5	26.3	27.4	26.7	27.7	28.0
6H	29.0	29.9	29.4	30.3	30.6	26.8	27.8	27.2	28.1	28.5
8H	29.0	29.8	29.4	30.2	30.6	27.0	27.8	27.4	28.2	28.6
12H	28.9	29.7	29.4	30.1	30.5	27.0	27.8	27.5	28.2	28.6
8H 4H	29.0	29.9	29.4	30.2	30.6	26.9	27.8	27.3	28.1	28.5
6H	29.3	30.0	29.7	30.4	30.8	27.6	28.3	28.1	28.7	29.2
8H	29.3	29.9	29.7	30.3	30.7	27.9	28.5	28.3	28.9	29.4
12H	29.2	29.8	29.7	30.2	30.7	28.0	28.5	28.5	29.0	29.5
12H 4H	29.0	29.8	29.4	30.2	30.6	26.9	27.7	27.3	28.1	28.5
6H	29.3	29.9	29.8	30.3	30.8	27.7	28.3	28.1	28.7	29.1
8H	29.3	29.8	29.8	30.3	30.7	27.9	28.5	28.4	28.9	29.4
Variations with the observer position at spacings:										
S = 1.0H	+ 0.1 / - 0.2					+ 0.2 / - 0.2				
1.5H	+ 0.1 / - 0.3					+ 0.3 / - 0.4				
2.0H	+ 0.5 / - 0.6					+ 0.5 / - 0.8				

CIE Pub.117 Corrected 984.6 lm Total Lamp Luminous Flux. (8log(F/F0) = -0.1)

C Range: 0 - 360DEG  
 C Interval: 15.0DEG  
 Test Speed: HIGH  
 Temperature:25.3DEG  
 Operators:Meng Yongjian  
 Test Date:2017-05-12

γ Range: 0 - 90DEG  
 γ Interval: 1.0DEG  
 Test System:EVERFINE GO-2000B\_V1 SYSTEM V2.0.288  
 Humidity:52%  
 Test Distance:5.850m [K=1.0000]  
 Remarks:

UTILIZATION FACTORS TABLE

Test:U:220.8V I:0.0709A P:13.66W PF:0.8851 Lamp Flux:984.605x1 lm		
NAME: FL600-WW600-13W-840	TYPE:Linear Light	SERIAL No.:
SPEC.:4000K	DIM.: L600mm*W50mm*H95mm	
MFR.: NEKO LIGHTING AG		

REFLECTANCE										
Ceiling	0.8	0.8	0.8	0.7	0.7	0.7	0.5	0.5	0.5	0
Walls	0.7	0.5	0.3	0.7	0.5	0.3	0.7	0.5	0.3	0
Working plane	0.2	0.2	0.2	0.2	0.2	0.2	0.2	0.2	0.2	0
ROOM INDEX	UTILIZATION FACTORS(PERCENT) $k(RI) \times RCR = 5$									
k = 0.60	60	49	42	59	49	42	58	48	42	36
0.80	70	59	52	69	58	51	67	57	51	44
1.00	78	67	60	77	67	60	74	68	59	52
1.25	85	75	68	83	74	67	81	73	67	60
1.50	90	80	73	88	79	73	85	77	72	65
2.00	96	88	82	94	87	81	91	85	80	72
2.50	100	93	87	98	91	86	94	89	84	76
3.00	103	97	92	101	95	90	97	92	88	80
4.00	107	102	97	105	100	96	101	97	93	85
5.00	109	105	101	107	103	100	103	99	97	88
ROOM INDEX	UF(total)									Direct
According to DIN EN 13032-2 2004			Suspended				SHRNOM = 1.25			

C Range: 0 - 360DEG  
 C Interval: 15.0DEG  
 Test Speed: HIGH  
 Temperature:25.3DEG  
 Operators:Meng Yongjian  
 Test Date:2017-05-12

$\gamma$  Range: 0 - 90DEG  
 $\gamma$  Interval: 1.0DEG  
 Test System:EVERFINE GO-2000B\_V1 SYSTEM V2.0.288  
 Humidity:52%  
 Test Distance:5.850m [K=1.0000]  
 Remarks:

**ISOCANDELA DIAGRAM**

Test:U:220.8V I:0.0709A P:13.66W PF:0.8851 Lamp Flux:984.605x1 lm		
NAME: FL600-WW600-13W-840	TYPE:Linear Light	SERIAL No.:
SPEC.:4000K	DIM.: L600mm*W50mm*H95mm	
MFR.: NEKO LIGHTING AG		

Conical surface Flux(90deg):

560.76 lm

%lum = 57.0%

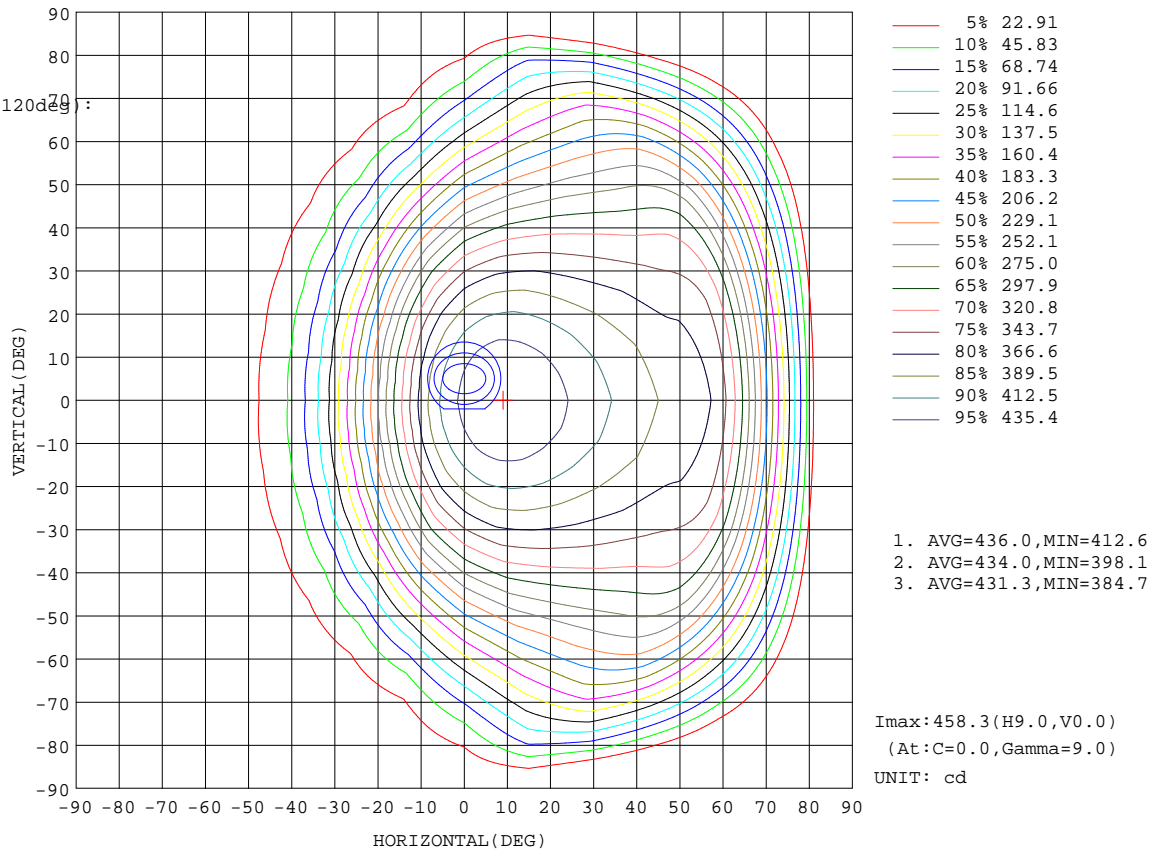
%lamp = 57.0%

Conical surface Flux(120deg):

791.79 lm

%lum = 80.4%

%lamp = 80.4%



C Range: 0 - 360DEG  
C Interval: 15.0DEG  
Test Speed: HIGH  
Temperature: 25.3DEG  
Operators: Meng Yongjian  
Test Date: 2017-05-12

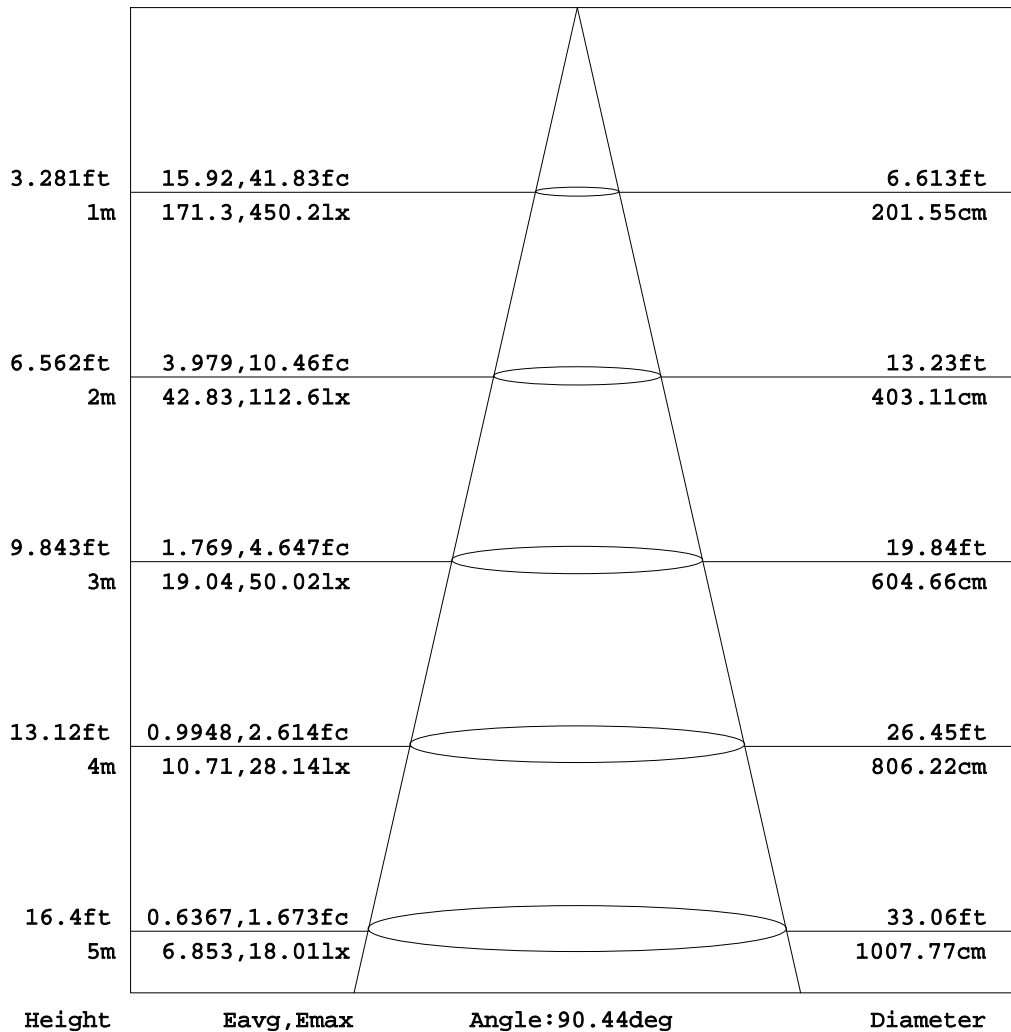
γ Range: 0 - 90DEG  
γ Interval: 1.0DEG  
Test System: EVERFINE GO-2000B\_V1 SYSTEM V2.0.288  
Humidity: 52%  
Test Distance: 5.850m [K=1.0000]  
Remarks:



**AAI Figure**

Test:U:220.8V I:0.0709A P:13.66W PF:0.8851 Lamp Flux:984.605x1 lm		
NAME: FL600-WW600-13W-840	TYPE:Linear Light	SERIAL No.:
SPEC.:4000K	DIM.: L600mm*W50mm*H95mm	
MFR.: NEKO LIGHTING AG		

Flux out:577.2 lm



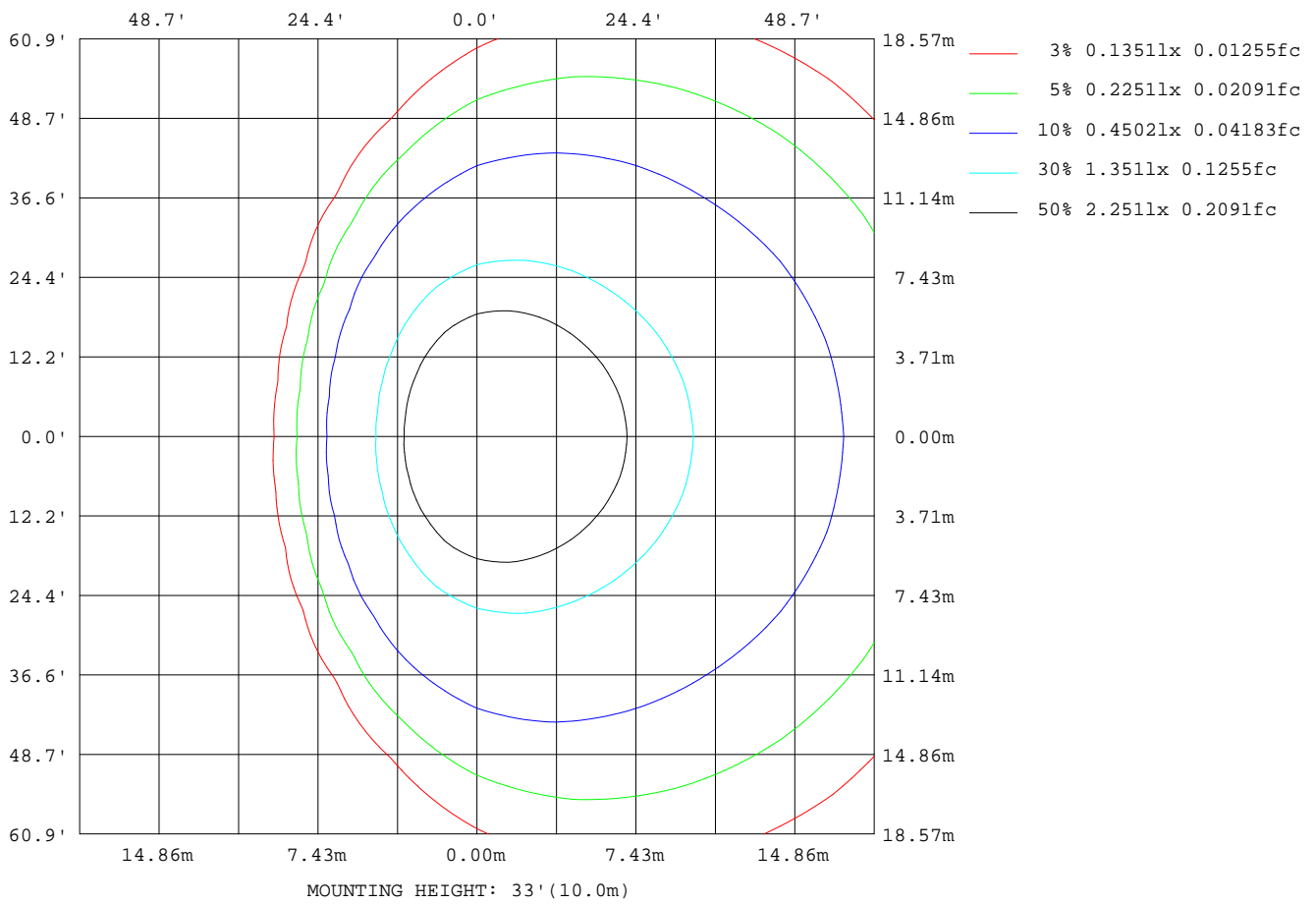
Note:The Curves indicate the illuminated area and the average illumination when the luminaire is at different distance.

C Range: 0 - 360DEG  
C Interval: 15.0DEG  
Test Speed: HIGH  
Temperature:25.3DEG  
Operators:Meng Yongjian  
Test Date:2017-05-12

γ Range: 0 - 90DEG  
γ Interval: 1.0DEG  
Test System:EVERFINE GO-2000B\_V1 SYSTEM V2.0.288  
Humidity:52%  
Test Distance:5.850m [K=1.0000]  
Remarks:

**ISOLUX DIAGRAM**

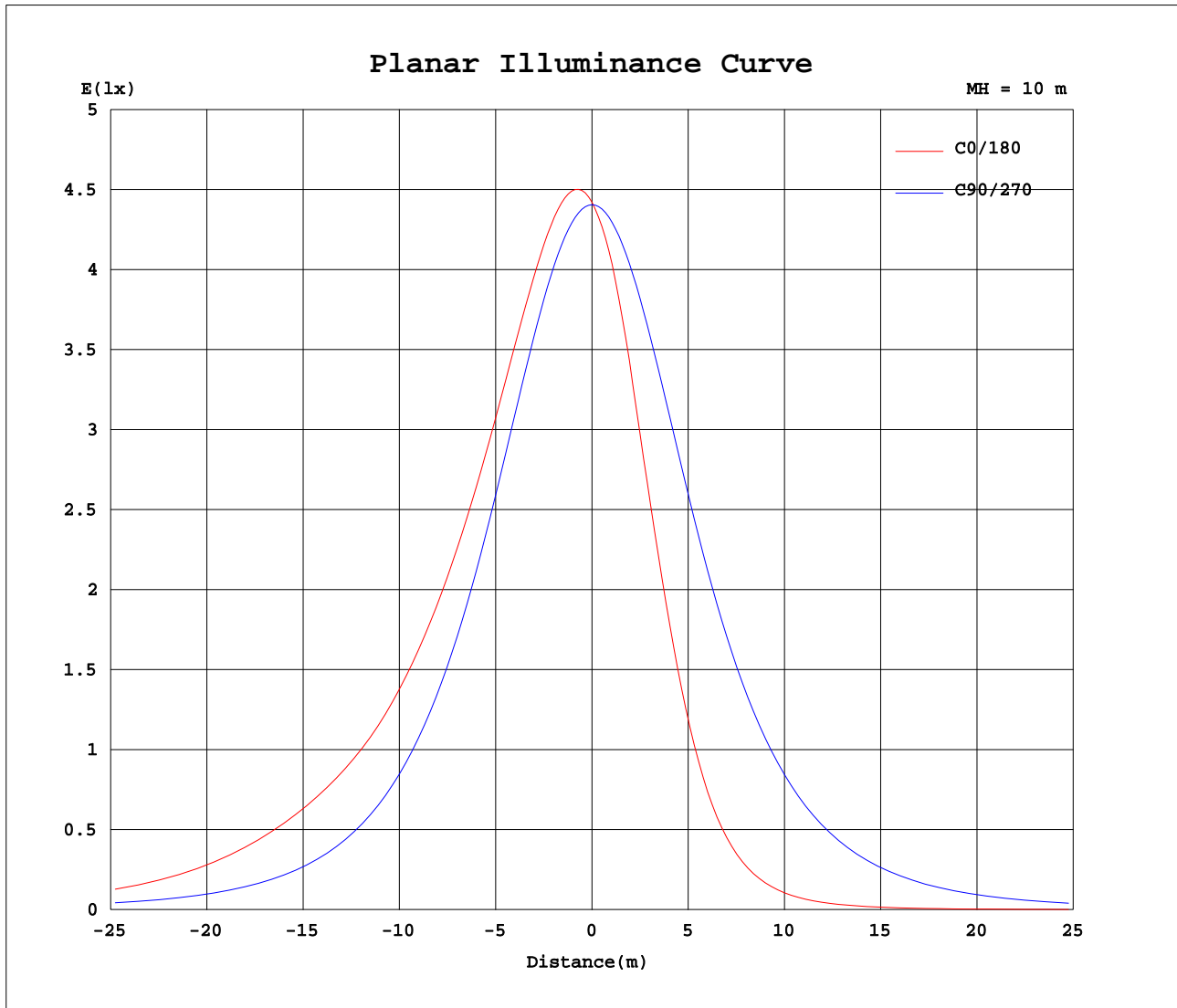
Test:U:220.8V I:0.0709A P:13.66W PF:0.8851 Lamp Flux:984.605x1 lm		
NAME: FL600-WW600-13W-840	TYPE:Linear Light	SERIAL No.:
SPEC.:4000K	DIM.: L600mm*W50mm*H95mm	
MFR.: NEKO LIGHTING AG		



C Range: 0 - 360DEG  
 C Interval: 15.0DEG  
 Test Speed: HIGH  
 Temperature:25.3DEG  
 Operators:Meng Yongjian  
 Test Date:2017-05-12

γ Range: 0 - 90DEG  
 γ Interval: 1.0DEG  
 Test System:EVERFINE GO-2000B\_V1 SYSTEM V2.0.288  
 Humidity:52%  
 Test Distance:5.850m [K=1.0000]  
 Remarks:

Planar Illuminance Curve



C Range: 0 - 360DEG  
 C Interval: 15.0DEG  
 Test Speed: HIGH  
 Temperature: 25.3DEG  
 Operators: Meng Yongjian  
 Test Date: 2017-05-12

$\gamma$  Range: 0 - 90DEG  
 $\gamma$  Interval: 1.0DEG  
 Test System: EVERFINE GO-2000B\_V1 SYSTEM V2.0.288  
 Humidity: 52%  
 Test Distance: 5.850m [K=1.0000]  
 Remarks:

LUMINOUS DISTRIBUTION INTENSITY DATA

Test:U:220.8V I:0.0709A P:13.66W PF:0.8851 Lamp Flux:984.605x1 lm		
NAME: FL600-WW600-13W-840	TYPE:Linear Light	SERIAL No.:
SPEC.:4000K	DIM.: L600mm*W50mm*H95mm	
MFR.: NEKO LIGHTING AG		

Table--1 UNIT: cd

C(DEG) γ (DEG)	0	15	30	45	60	75	90	105	120	135	150	165	180	195	210	225	240	255	270
0	442	441	442	441	441	441	441	441	441	441	441	442	442	441	442	441	441	441	441
5	455	454	453	450	447	442	438	433	427	424	420	418	417	417	420	423	428	433	438
10	458	457	455	451	445	438	429	418	407	395	383	377	374	375	383	394	407	418	429
15	454	453	449	445	437	428	414	398	376	355	332	319	313	316	332	353	377	398	415
20	445	443	439	433	424	412	395	372	339	304	275	257	250	254	275	302	339	372	396
25	433	431	425	417	406	392	371	340	294	252	216	194	185	191	215	249	294	339	371
30	422	418	410	398	385	368	342	304	248	199	159	137	128	133	158	196	248	303	343
35	411	406	394	378	360	341	310	264	201	148	109	89.5	82.0	87.4	108	145	201	262	311
40	400	394	378	358	335	311	276	221	155	103	71.2	55.7	50.2	53.9	69.7	101	155	218	276
45	390	382	362	337	309	280	240	179	113	68.5	44.0	33.7	29.9	32.3	42.9	66.0	112	176	239
50	381	371	346	316	283	249	203	139	77.4	42.8	26.6	20.1	17.7	19.1	25.6	40.6	75.8	135	201
55	374	362	331	293	257	218	167	101	49.3	25.8	15.9	12.0	10.6	11.3	15.1	24.0	47.8	97.1	164
60	350	341	312	271	232	188	132	68.0	29.5	15.2	9.53	7.31	6.41	6.81	8.91	13.9	28.0	63.9	128
65	291	288	272	243	205	158	99.6	41.5	16.9	8.92	5.75	4.51	3.96	4.15	5.29	7.95	15.4	37.8	95.2
70	210	211	204	197	175	129	70.6	22.6	9.42	5.22	3.49	2.81	2.45	2.55	3.18	4.55	8.18	19.6	66.0
75	122	124	126	131	132	101	45.1	11.2	5.27	3.07	2.13	1.74	1.51	1.58	1.92	2.63	4.34	8.86	40.8
80	36.8	41.1	47.1	60.3	74.8	69.7	24.5	5.40	2.92	1.75	1.28	1.06	0.91	0.97	1.15	1.54	2.32	3.78	20.4
85	0.19	0.24	0.42	1.68	13.9	27.4	9.90	2.93	1.56	0.92	0.74	0.63	0.54	0.60	0.68	0.87	1.16	1.53	6.24
90	0.08	0.12	0.26	0.85	3.18	4.12	1.22	1.37	0.72	0.42	0.35	0.34	0.29	0.31	0.37	0.42	0.46	0.46	0.40

C Range: 0 - 360DEG γ Range: 0 - 90DEG  
C Interval: 15.0DEG γ Interval: 1.0DEG  
Test Speed: HIGH Test System:EVERFINE GO-2000B\_V1 SYSTEM V2.0.288  
Temperature:25.3DEG Humidity:52%  
Operators:Meng Yongjian Test Distance:5.850m [K=1.0000]  
Test Date:2017-05-12 Remarks:

LUMINOUS DISTRIBUTION INTENSITY DATA

Test:U:220.8V I:0.0709A P:13.66W PF:0.8851 Lamp Flux:984.605x1 lm		
NAME: FL600-WW600-13W-840	TYPE:Linear Light	SERIAL No.:
SPEC.:4000K	DIM.: L600mm*W50mm*H95mm	
MFR.: NEKO LIGHTING AG		

Table--2

UNIT: cd

C( DEG) γ (DEG)	285	300	315	330	345															
0	441	441	441	441	442															
5	443	447	450	452	454															
10	438	445	450	454	457															
15	428	438	444	449	452															
20	412	424	432	438	442															
25	392	406	415	424	430															
30	367	384	397	408	417															
35	339	360	376	393	405															
40	309	334	356	377	393															
45	277	308	335	362	381															
50	245	281	314	345	370															
55	213	255	291	330	361															
60	182	228	269	311	338															
65	152	199	240	270	282															
70	123	169	191	201	204															
75	94.7	125	124	122	117															
80	63.1	67.2	53.6	43.0	34.7															
85	21.4	9.81	0.53	0.28	0.21															
90	0.33	0.27	0.22	0.17	0.11															

C Range: 0 - 360DEG  
 C Interval: 15.0DEG  
 Test Speed: HIGH  
 Temperature:25.3DEG  
 Operators:Meng Yongjian  
 Test Date:2017-05-12

γ Range: 0 - 90DEG  
 γ Interval: 1.0DEG  
 Test System:EVERFINE GO-2000B\_V1 SYSTEM V2.0.288  
 Humidity:52%  
 Test Distance:5.850m [K=1.0000]  
 Remarks:

Photometric Data Table [cd]

G/C	0.0	15.0	30.0	45.0	60.0	75.0	90.0	105.0	120.0	135.0
0.0	442.1	441.4	441.6	441.0	440.8	440.6	440.6	440.7	440.7	441.3
3.0	451.4	450.5	449.6	447.5	445.2	442.5	439.5	436.7	433.6	431.7
6.0	456.6	455.7	453.9	450.9	446.9	442.1	436.2	430.3	423.9	419.0
9.0	458.3	457.4	455.1	451.4	446.1	439.5	430.9	421.8	411.4	402.2
12.0	457.1	456.2	453.5	449.3	442.9	434.8	423.6	411.0	395.9	380.0
15.0	453.6	452.7	449.5	444.8	437.5	428.0	414.3	398.2	376.3	354.7
18.0	448.5	447.4	443.6	438.2	430.0	419.3	403.1	383.4	355.0	324.5
21.0	442.3	440.9	436.3	430.0	420.8	408.8	390.2	366.4	330.7	294.2
24.0	435.5	433.7	427.9	420.5	410.0	396.7	375.7	347.4	303.2	262.9
27.0	428.5	426.1	419.0	409.8	397.7	383.0	359.6	326.2	275.8	230.8
30.0	421.6	418.5	409.6	398.4	384.5	368.0	342.1	304.0	248.1	198.9
33.0	414.9	411.0	400.3	386.5	370.3	351.9	323.4	280.6	219.7	167.8
36.0	408.5	403.7	390.8	374.4	355.4	334.9	303.6	255.8	191.6	138.9
39.0	402.1	396.5	381.6	362.0	340.3	317.2	283.0	230.1	164.3	111.7
42.0	395.8	389.3	372.1	349.7	324.7	298.9	261.6	204.3	137.9	88.38
45.0	389.5	382.0	362.4	337.2	308.9	280.3	239.7	179.2	113.2	68.49
48.0	383.9	374.9	352.5	324.4	293.2	261.5	217.7	154.6	90.89	51.95
51.0	380.3	369.1	342.7	311.3	277.6	242.7	195.7	130.8	71.24	38.82
54.0	376.0	364.1	333.8	297.9	262.0	224.1	173.9	107.9	54.25	28.67
57.0	367.6	355.9	324.4	284.3	247.0	205.7	152.6	86.93	40.48	20.95
60.0	349.8	340.5	311.5	271.3	232.1	187.6	131.9	67.95	29.51	15.23
63.0	318.8	313.2	291.2	255.9	216.0	169.9	112.2	51.22	21.19	11.06
66.0	276.0	274.0	260.0	236.1	199.4	152.5	93.53	37.15	15.05	8.038
69.0	227.2	227.2	219.2	208.2	181.6	135.5	76.10	25.80	10.58	5.822
72.0	175.5	177.2	173.7	172.0	159.9	117.8	59.71	17.20	7.448	4.236
75.0	121.7	124.4	126.1	131.1	132.1	100.8	45.09	11.18	5.270	3.067
78.0	68.94	72.64	77.95	88.48	98.56	83.27	32.09	7.216	3.707	2.200
81.0	22.66	26.73	32.91	46.55	62.26	62.03	21.03	4.693	2.599	1.555
84.0	0.2366	0.3055	0.7261	9.521	24.96	36.25	12.29	3.313	1.794	1.059
87.0	0.1293	0.1703	0.3285	1.182	3.787	10.88	5.769	2.094	1.157	0.6858
90.0	0.0831	0.1224	0.2602	0.8527	3.183	4.124	1.218	1.373	0.7193	0.4198
G/C	150.0	165.0	180.0	195.0	210.0	225.0	240.0	255.0	270.0	285.0
0.0	441.3	442.0	441.4	441.6	441.0	440.8	440.6	440.6	440.7	441.3
3.0	429.5	429.0	428.5	428.1	429.8	431.2	433.9	436.5	439.7	442.6
6.0	413.8	411.5	410.0	410.0	414.0	418.2	424.3	430.2	436.6	442.2
9.0	391.3	386.2	383.5	384.2	391.6	401.0	411.9	421.6	431.5	439.6
12.0	364.5	355.5	350.7	352.9	364.6	378.5	396.5	410.8	424.3	434.9
15.0	331.5	319.2	313.4	316.4	331.6	352.8	376.9	397.8	415.1	428.0
18.0	298.1	282.6	275.7	279.8	298.0	322.3	355.6	382.9	404.1	419.3
21.0	263.1	244.6	236.5	241.5	262.8	291.7	331.3	365.8	391.2	408.6
24.0	227.5	206.6	197.7	203.4	226.9	260.1	303.6	346.4	376.6	396.2
27.0	192.2	170.0	160.8	167.0	191.5	227.9	276.0	324.9	360.4	382.4
30.0	158.8	136.5	127.6	133.5	157.8	195.6	248.1	302.5	342.7	367.1
33.0	128.0	106.5	98.30	104.3	126.3	164.6	219.6	278.6	323.7	350.7
36.0	100.9	81.67	74.52	79.60	99.32	135.3	191.4	253.6	303.7	333.1
39.0	77.98	61.54	55.52	59.54	76.43	108.9	163.6	227.2	282.7	315.0
42.0	58.94	45.69	40.91	44.04	57.70	85.67	137.3	201.3	261.0	296.2
45.0	44.01	33.68	29.95	32.29	42.91	66.01	111.8	175.9	238.7	277.0
48.0	32.58	24.72	21.86	23.60	31.58	49.48	89.31	151.2	216.1	257.7
51.0	23.99	18.11	15.98	17.21	23.03	36.62	69.55	127.2	193.5	238.3
54.0	17.60	13.33	11.74	12.59	16.78	26.76	52.72	104.4	171.2	219.3
57.0	12.94	9.851	8.662	9.265	12.21	19.35	38.87	83.33	149.4	200.7
60.0	9.532	7.310	6.408	6.805	8.906	13.87	27.97	63.93	127.7	182.3
63.0	7.021	5.450	4.787	5.062	6.501	9.937	19.66	47.43	107.8	164.3
66.0	5.214	4.110	3.595	3.755	4.768	7.091	13.61	33.57	89.03	146.6
69.0	3.861	3.085	2.702	2.810	3.529	5.090	9.297	22.60	71.52	129.2
72.0	2.870	2.320	2.025	2.108	2.599	3.645	6.351	14.45	55.42	111.9
75.0	2.134	1.739	1.512	1.582	1.918	2.631	4.339	8.861	40.80	94.68
78.0	1.574	1.296	1.120	1.184	1.415	1.911	2.981	5.298	27.87	77.04
81.0	1.149	0.9547	0.8212	0.8775	1.037	1.381	2.037	3.155	17.04	55.55
84.0	0.8211	0.7011	0.6006	0.6566	0.7512	0.9785	1.349	1.855	8.556	30.19
87.0	0.5846	0.5091	0.4391	0.4902	0.5460	0.6721	0.8119	0.9841	2.279	4.793
90.0	0.3542	0.3411	0.2864	0.3127	0.3651	0.4220	0.4592	0.4635	0.3979	0.3323
G/C	300.0	315.0	330.0	345.0						
0.0	440.7	441.3	441.3	442.0						
3.0	445.2	447.6	449.2	450.8						
6.0	447.0	450.7	453.5	455.6						
9.0	446.3	451.0	454.6	457.0						
12.0	443.1	448.6	452.8	455.5						
15.0	437.8	443.9	448.7	451.7						
18.0	430.3	437.1	442.8	446.3						
21.0	421.0	428.7	435.3	439.6						

C Range: 0 - 360DEG  
C Interval: 15.0DEG  
Test Speed: HIGH  
Temperature: 25.3DEG  
Operators: Meng Yongjian  
Test Date: 2017-05-12

γ Range: 0 - 90DEG  
γ Interval: 1.0DEG  
Test System: EVERFINE GO-2000B\_V1 SYSTEM V2.0.288  
Humidity: 52%  
Test Distance: 5.850m [K=1.0000]  
Remarks:

Photometric Data Table [cd]

24.0	410.1	418.9	426.9	432.2
27.0	397.8	408.1	417.8	424.6
30.0	384.3	396.5	408.5	417.0
33.0	370.0	384.5	399.1	409.5
36.0	354.9	372.3	389.7	402.3
39.0	339.5	359.9	380.4	395.2
42.0	323.8	347.6	371.1	388.0
45.0	307.9	335.0	361.5	380.8
48.0	291.9	322.4	351.8	374.0
51.0	276.0	309.3	342.1	368.5
54.0	260.1	295.9	333.4	363.2
57.0	243.9	282.3	323.9	354.5
60.0	227.6	269.1	310.8	337.8
63.0	210.7	253.2	289.8	308.8
66.0	193.7	232.2	257.8	267.9
69.0	175.6	203.0	216.3	220.3
72.0	153.6	165.7	170.4	169.8
75.0	124.8	124.4	121.8	117.4
78.0	90.98	81.85	73.43	66.11
81.0	55.33	39.99	29.00	20.78
84.0	20.40	4.081	0.3965	0.2562
87.0	0.3686	0.2739	0.1878	0.1489
90.0	0.2689	0.2208	0.1662	0.1093

C Range: 0 - 360DEG  
C Interval: 15.0DEG  
Test Speed: HIGH  
Temperature: 25.3DEG  
Operators: Meng Yongjian  
Test Date: 2017-05-12

γ Range: 0 - 90DEG  
γ Interval: 1.0DEG  
Test System: EVERFINE GO-2000B\_V1 SYSTEM V2.0.288  
Humidity: 52%  
Test Distance: 5.850m [K=1.0000]  
Remarks: