

FL1200-UL1200-11W-840



Light Output Ratio:	100.0%	
Luminaire Power:	10.85 W	
SHR Nominal:	1.25	Calculated using the TM5
SHR Maximum:	1.35	fine grid method.

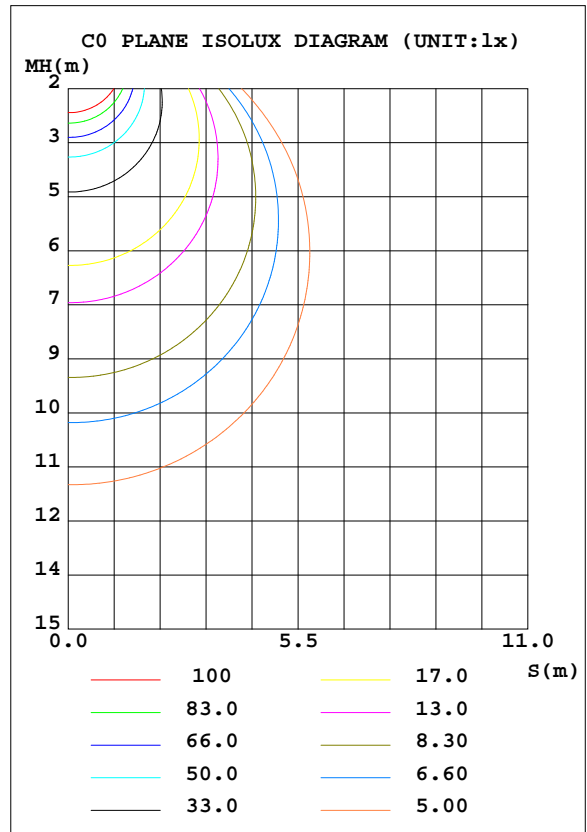
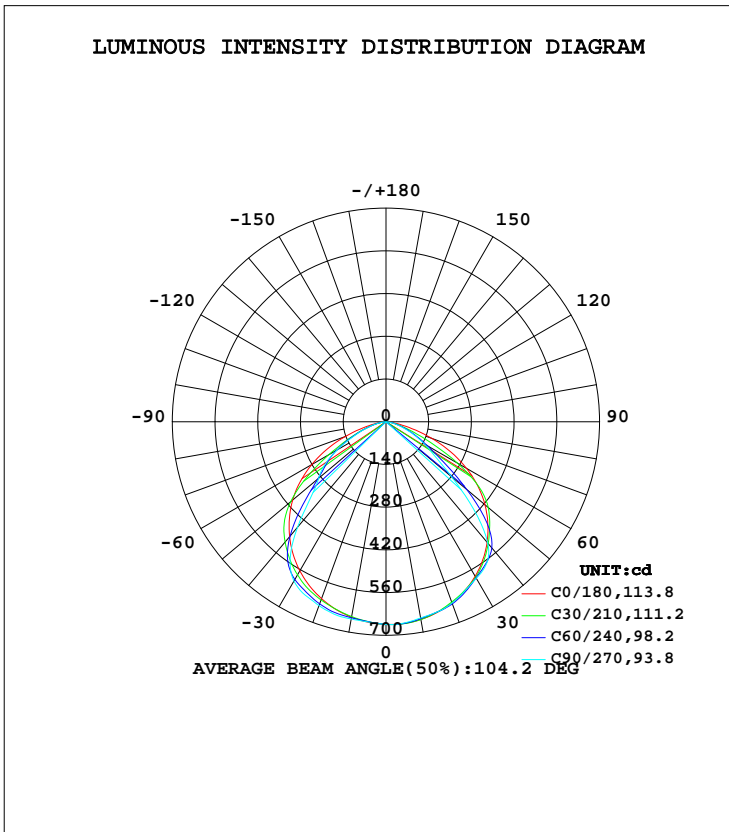
C Range: 0 - 360DEG
C Interval: 15.0DEG
Test Speed: HIGH
Temperature:25.3DEG
Operators:Meng yongjian
Test Date:2018-03-27

γ Range: 0 - 90DEG
 γ Interval: 1.0DEG
Test System:EVERFINE GO-2000B_V1 SYSTEM V2.0.288
Humidity:52%
Test Distance:5.850m [K=1.0000]
Remarks:

LUMINAIRE PHOTOMETRIC TEST REPORT

Test:U:43.40V I:0.2500A P:10.85W PF:1.000 Freq:0Hz Lamp Flux:1679.4lx1 lm		
NAME: FL1200-UL1200-11W-840	TYPE:Linear Light	SERIAL No.:
SPEC.:4000K	DIM.: L1200mm*W50mm*H80mm	
MFR.: NEKO LIGHTING AG		

DATA OF LAMP		PHOTOMETRIC DATA Eff: 154.78 lm/W			
MODEL	SAMSUNG-4000K	I _{max} (cd)	665.4	S/MH(C0/180)	1.26
NOMINAL POWER(W)	11	LOR(%)	100.0	S/MH(C90/270)	1.28
RATED VOLTAGE(V)	45	TOTAL FLUX(lm)	1679.4	η UP, DN(C0-180)	0.0,50.0
NOMINAL FLUX(lm)	1679.41	CIE CLASS	DIRECT	η UP, DN(C180-360)	0.0,50.0
LAMPS INSIDE	1	η up(%)	0.0	CIBSE SHR NOM	1.25
TEST VOLTAGE(V)	43.4	η down(%)	100.0	CIBSE SHR MAX	1.35



C Range: 0 - 360DEG
 C Interval: 15.0DEG
 Test Speed: HIGH
 Temperature:25.3DEG
 Operators:Meng yongjian
 Test Date:2018-03-27

γ Range: 0 - 90DEG
 γ Interval: 1.0DEG
 Test System:EVERFINE GO-2000B_V1 SYSTEM V2.0.288
 Humidity:52%
 Test Distance:5.850m [K=1.0000]
 Remarks:

ZONAL FLUX DIAGRAM

ZONAL FLUX DIAGRAM:

γ	C0	C45	C90	C135	C180	C225	C270	C315	γ	Φ zone	Φ total	%lum, lamp
10	658.0	657.1	653.0	651.5	650.6	649.5	656.4	655.3	0- 10	62.87	62.87	3.74,3.74
20	631.7	633.1	632.7	622.1	617.3	630.2	641.3	640.3	10- 20	182.1	245.0	14.6,14.6
30	584.7	590.6	592.5	575.5	564.4	587.1	603.1	601.2	20- 30	281.9	526.8	31.4,31.4
40	515.6	532.9	518.6	513.5	491.4	516.2	450.5	535.2	30- 40	346.4	873.2	52,52
50	423.5	418.6	281.6	395.9	399.6	337.2	287.9	359.0	40- 50	338.4	1212	72.1,72.1
60	303.9	191.0	144.9	178.4	281.5	182.3	184.7	194.2	50- 60	256.9	1469	87.4,87.4
70	160.2	73.03	63.49	67.26	143.0	84.44	79.51	92.56	60- 70	148.3	1617	96.3,96.3
80	38.12	21.26	15.24	19.15	32.48	22.94	16.48	25.33	70- 80	56.11	1673	99.6,99.6
90	0.5925	0.2449	0.1662	0.2777	0.6319	0.2296	0.1421	0.2121	80- 90	6.412	1679	100,100
100									90-100			
110									100-110			
120									110-120			
130									120-130			
140									130-140			
150									140-150			
160									150-160			
170									160-170			
180									170-180			
DEG	LUMINOUS INTENSITY:cd									UNIT:lm		

Conical surface Flux(90deg): 1049.3 lm

%lum = 62.5%

%lamp = 62.5%

Conical surface Flux(120deg): 1468.6 lm

%lum = 87.4%

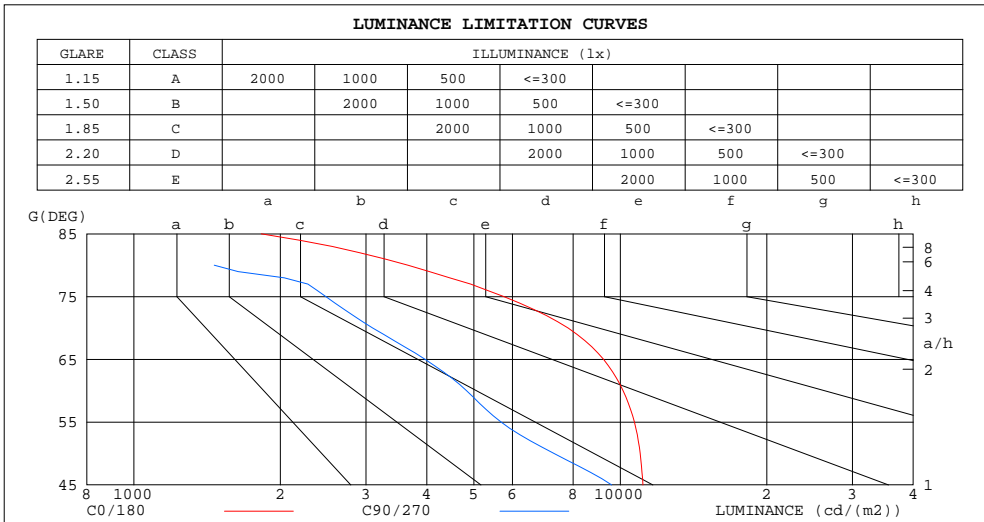
%lamp = 87.4%

C Range: 0 - 360DEG
C Interval: 15.0DEG
Test Speed: HIGH
Temperature:25.3DEG
Operators:Meng yongjian
Test Date:2018-03-27

γ Range: 0 - 90DEG
 γ Interval: 1.0DEG
Test System:EVERFINE GO-2000B_V1 SYSTEM V2.0.288
Humidity:52%
Test Distance:5.850m [K=1.0000]
Remarks:

LUMINANCE LIMITATION CURVES

Test:U:43.40V I:0.2500A P:10.85W PF:1.000 Freq:0Hz Lamp Flux:1679.4lx1 lm		
NAME: FL1200-UL1200-11W-840	TYPE:Linear Light	SERIAL No.:
SPEC.:4000K	DIM.: L1200mm*W50mm*H80mm	
MFR.: NEKO LIGHTING AG		



LUMINANCE cd/(m2)		
G(DEG)	C0/180	C90/270
85	1828	84
80	3659	1463
75	5760	2481
70	7806	3094
65	9233	3968
60	10130	4830
55	10686	5688
50	10982	7300
45	11132	9598

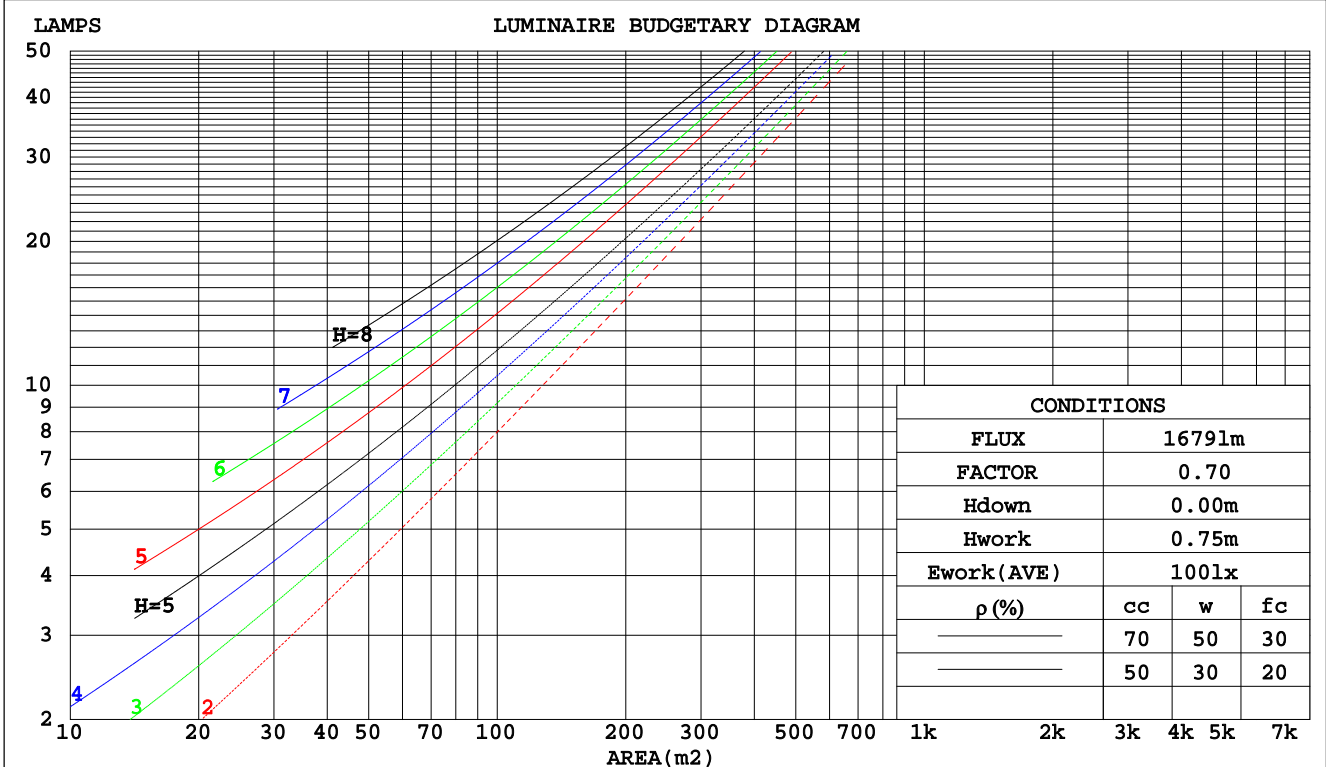
C Range: 0 - 360DEG
 C Interval: 15.0DEG
 Test Speed: HIGH
 Temperature:25.3DEG
 Operators:Meng yongjian
 Test Date:2018-03-27

γ Range: 0 - 90DEG
 γ Interval: 1.0DEG
 Test System:EVERFINE GO-2000B_V1 SYSTEM V2.0.288
 Humidity:52%
 Test Distance:5.850m [K=1.0000]
 Remarks:

CU AND LUMINAIRE BUDGETARY ESTIMATE DIAGRAM

Test:U:43.40V I:0.2500A P:10.85W PF:1.000 Freq:0Hz Lamp Flux:1679.41x1 lm		
NAME: FL1200-UL1200-11W-840	TYPE:Linear Light	SERIAL No.:
SPEC.:4000K	DIM.: L1200mm*W50mm*H80mm	
MFR.: NEKO LIGHTING AG		

pcc	80%			70%			50%			30%			10%			0
pw	50%	30%	10%	50%	30%	10%	50%	30%	10%	50%	30%	10%	50%	30%	10%	0
pfc	20%			20%			20%			20%			20%			0
RCR	RCR:Room Cavity Ratio Coefficients of Utilization(CU)															
0.0	1.19	1.19	1.19	1.16	1.16	1.16	1.11	1.11	1.11	1.06	1.06	1.06	1.02	1.02	1.02	.00
1.0	1.06	1.03	.99	1.04	1.01	.98	.90	.97	.95	.96	.94	.92	.92	.91	.89	.87
2.0	.94	.88	.83	.92	.87	.82	.89	.84	.80	.85	.82	.78	.82	.79	.76	.74
3.0	.83	.76	.70	.82	.75	.69	.79	.73	.68	.76	.71	.67	.74	.70	.66	.64
4.0	.74	.66	.60	.73	.66	.60	.71	.64	.59	.68	.63	.58	.66	.61	.57	.55
5.0	.67	.58	.52	.66	.58	.52	.64	.57	.51	.62	.56	.51	.60	.55	.50	.48
6.0	.60	.52	.46	.59	.51	.46	.58	.51	.45	.56	.50	.45	.55	.49	.44	.43
7.0	.55	.47	.41	.54	.46	.41	.53	.45	.40	.51	.45	.40	.50	.44	.40	.38
8.0	.50	.42	.36	.49	.42	.36	.48	.41	.36	.47	.41	.36	.46	.40	.36	.34
9.0	.46	.38	.33	.45	.38	.33	.44	.37	.33	.43	.37	.32	.42	.36	.32	.30
10.0	.43	.35	.30	.42	.35	.30	.41	.34	.30	.40	.34	.29	.39	.33	.29	.28



C Range: 0 - 360DEG
 C Interval: 15.0DEG
 Test Speed: HIGH
 Temperature: 25.3DEG
 Operators: Meng yongjian
 Test Date: 2018-03-27

γ Range: 0 - 90DEG
 γ Interval: 1.0DEG
 Test System: EVERFINE GO-2000B_V1 SYSTEM V2.0.288
 Humidity: 52%
 Test Distance: 5.850m [K=1.0000]
 Remarks:

WEC AND CCEC

Test:U:43.40V I:0.2500A P:10.85W PF:1.000 Freq:0Hz Lamp Flux:1679.41x1 lm		
NAME: FL1200-UL1200-11W-840	TYPE:Linear Light	SERIAL No.:
SPEC.:4000K	DIM.: L1200mm*W50mm*H80mm	
MFR.: NEKO LIGHTING AG		

ρcc	80%			70%			50%			30%			10%			0
ρw	50%	30%	10%	50%	30%	10%	50%	30%	10%	50%	30%	10%	50%	30%	10%	0
ρfc	20%			20%			20%			20%			20%			0
RCR	RCR:Room Cavity Ratio						Wall Exitance Coefficients(WEC)									
0.0																
1.0	.265	.151	.048	.258	.147	.047	.245	.141	.045	.233	.135	.043	.222	.129	.042	
2.0	.258	.141	.043	.252	.139	.043	.241	.134	.042	.230	.129	.040	.220	.125	.039	
3.0	.244	.130	.039	.239	.128	.038	.229	.124	.038	.219	.120	.037	.211	.117	.036	
4.0	.229	.119	.035	.224	.117	.035	.215	.114	.034	.207	.111	.034	.200	.108	.033	
5.0	.215	.109	.032	.210	.108	.031	.202	.105	.031	.195	.103	.031	.188	.101	.030	
6.0	.201	.101	.029	.197	.100	.029	.190	.098	.028	.184	.095	.028	.178	.093	.028	
7.0	.189	.093	.026	.185	.092	.026	.179	.090	.026	.173	.089	.026	.168	.087	.026	
8.0	.177	.087	.024	.174	.086	.024	.169	.084	.024	.163	.083	.024	.158	.081	.024	
9.0	.167	.081	.023	.164	.080	.022	.159	.079	.022	.155	.077	.022	.150	.076	.022	
10.0	.158	.076	.021	.155	.075	.021	.151	.074	.021	.146	.073	.021	.142	.072	.021	

ρcc	80%			70%			50%			30%			10%			0
ρw	50%	30%	10%	50%	30%	10%	50%	30%	10%	50%	30%	10%	50%	30%	10%	0
ρfc	20%			20%			20%			20%			20%			0
RCR	RCR:Room Cavity Ratio						Ceiling Cavity Exitance Coefficients(CCEC)									
0.0	.190	.190	.190	.163	.163	.163	.111	.111	.111	.064	.064	.064	.020	.020	.020	
1.0	.177	.157	.138	.152	.134	.119	.104	.092	.082	.060	.053	.048	.019	.017	.015	
2.0	.168	.132	.102	.144	.114	.088	.098	.079	.062	.057	.046	.036	.018	.015	.012	
3.0	.160	.114	.078	.137	.098	.068	.094	.068	.047	.054	.040	.028	.017	.013	.009	
4.0	.152	.101	.061	.130	.087	.053	.090	.061	.038	.052	.035	.022	.017	.012	.007	
5.0	.145	.090	.050	.124	.078	.043	.086	.054	.030	.050	.032	.018	.016	.010	.006	
6.0	.138	.081	.041	.119	.071	.036	.082	.049	.025	.047	.029	.015	.015	.009	.005	
7.0	.132	.075	.035	.113	.065	.030	.078	.045	.021	.045	.027	.013	.015	.009	.004	
8.0	.125	.069	.030	.108	.060	.026	.075	.042	.018	.043	.025	.011	.014	.008	.004	
9.0	.120	.064	.026	.103	.055	.023	.072	.039	.016	.042	.023	.010	.013	.008	.003	
10.0	.114	.060	.023	.099	.052	.020	.068	.036	.014	.040	.022	.009	.013	.007	.003	

C Range: 0 - 360DEG
 C Interval: 15.0DEG
 Test Speed: HIGH
 Temperature:25.3DEG
 Operators:Meng yongjian
 Test Date:2018-03-27

γ Range: 0 - 90DEG
 γ Interval: 1.0DEG
 Test System:EVERFINE GO-2000B_V1 SYSTEM V2.0.288
 Humidity:52%
 Test Distance:5.850m [K=1.0000]
 Remarks:

UGR(Unified Glare Rating) Table

Test:U:43.40V I:0.2500A P:10.85W PF:1.000 Freq:0Hz Lamp Flux:1679.41x1 lm		
NAME: FL1200-UL1200-11W-840	TYPE:Linear Light	SERIAL No.:
SPEC.:4000K	DIM.: L1200mm*W50mm*H80mm	
MFR.: NEKO LIGHTING AG		

ceiling/cavity	0.7	0.7	0.5	0.5	0.3	0.7	0.7	0.5	0.5	0.3
walls	0.5	0.3	0.5	0.3	0.3	0.5	0.3	0.5	0.3	0.3
working plane	0.2	0.2	0.2	0.2	0.2	0.2	0.2	0.2	0.2	0.2
Room dimensions	Viewed crosswise					Viewed endwise				
x = 2H y = 2H	19.7	21.1	20.0	21.3	21.5	17.1	18.5	17.4	18.7	18.9
3H	20.8	22.1	21.1	22.3	22.5	17.5	18.8	17.8	19.0	19.3
4H	21.0	22.3	21.3	22.5	22.8	17.6	18.9	17.9	19.1	19.4
6H	21.1	22.3	21.4	22.5	22.8	17.6	18.8	18.0	19.1	19.3
8H	21.1	22.2	21.4	22.5	22.8	17.6	18.7	17.9	19.0	19.3
12H	21.1	22.1	21.4	22.4	22.7	17.5	18.6	17.9	18.9	19.2
4H 2H	19.7	21.0	20.1	21.2	21.5	17.6	18.8	17.9	19.0	19.3
3H	20.9	21.9	21.2	22.2	22.5	18.1	19.1	18.4	19.4	19.7
4H	21.2	22.2	21.6	22.5	22.8	18.2	19.2	18.6	19.5	19.9
6H	21.3	22.2	21.7	22.5	22.9	18.3	19.2	18.7	19.5	19.9
8H	21.3	22.1	21.7	22.5	22.9	18.3	19.1	18.7	19.4	19.8
12H	21.3	22.0	21.7	22.4	22.8	18.2	19.0	18.7	19.3	19.7
8H 4H	21.1	21.9	21.5	22.3	22.7	18.3	19.1	18.7	19.5	19.8
6H	21.3	21.9	21.7	22.3	22.8	18.4	19.1	18.9	19.5	19.9
8H	21.3	21.9	21.8	22.3	22.8	18.4	19.0	18.9	19.4	19.8
12H	21.3	21.8	21.8	22.3	22.7	18.4	18.8	18.8	19.3	19.8
12H 4H	21.1	21.8	21.5	22.2	22.6	18.3	19.0	18.7	19.4	19.8
6H	21.3	21.8	21.7	22.3	22.7	18.4	19.0	18.9	19.4	19.9
8H	21.3	21.8	21.8	22.2	22.7	18.4	18.9	18.9	19.3	19.8
Variations with the observer position at spacings:										
S = 1.0H	+ 0.4 / - 0.4					+ 0.9 / - 1.2				
1.5H	+ 0.5 / - 0.6					+ 0.4 / - 1.0				
2.0H	+ 0.7 / - 1.2					+ 1.6 / - 1.6				

CIE Pub.117, 1679 lm Total Lamp Luminous Flux Correct (8log(F/F0) = 1.8)

C Range: 0 - 360DEG
 C Interval: 15.0DEG
 Test Speed: HIGH
 Temperature:25.3DEG
 Operators:Meng yongjian
 Test Date:2018-03-27

γ Range: 0 - 90DEG
 γ Interval: 1.0DEG
 Test System:EVERFINE GO-2000B_V1 SYSTEM V2.0.288
 Humidity:52%
 Test Distance:5.850m [K=1.0000]
 Remarks:

UTILIZATION FACTORS TABLE

Test:U:43.40V I:0.2500A P:10.85W PF:1.000 Freq:0Hz Lamp Flux:1679.41x1 lm		
NAME: FL1200-UL1200-11W-840	TYPE:Linear Light	SERIAL No.:
SPEC.:4000K	DIM.: L1200mm*W50mm*H80mm	
MFR.: NEKO LIGHTING AG		

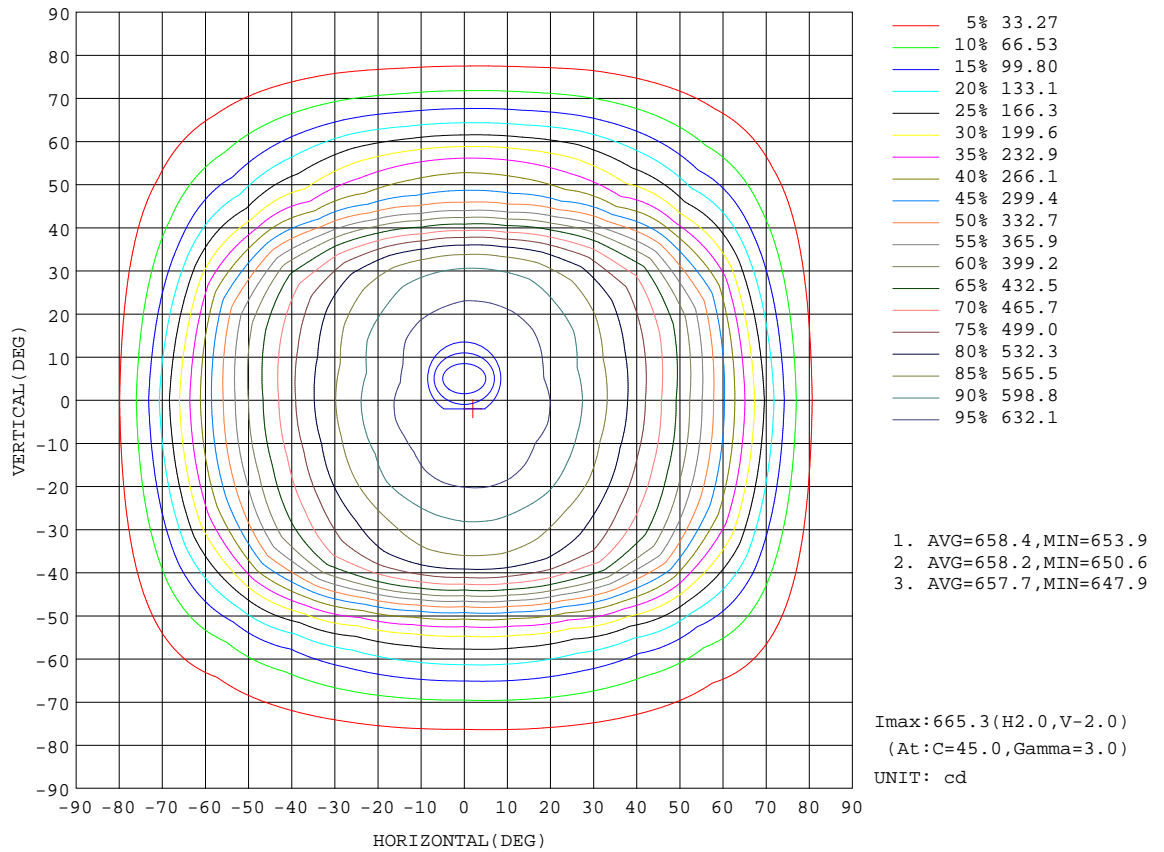
REFLECTANCE										
Ceiling	0.8	0.8	0.8	0.7	0.7	0.7	0.5	0.5	0.5	0
Walls	0.7	0.5	0.3	0.7	0.5	0.3	0.7	0.5	0.3	0
Working plane	0.2	0.2	0.2	0.2	0.2	0.2	0.2	0.2	0.2	0
ROOM INDEX	UTILIZATION FACTORS(PERCENT) $k(RI) \times RCR = 5$									
k = 0.60	61	50	44	61	50	44	60	50	44	38
0.80	72	61	54	71	61	54	69	60	54	47
1.00	80	70	64	79	70	63	77	71	63	56
1.25	87	78	72	86	77	71	84	76	70	64
1.50	92	83	77	91	83	77	88	81	76	69
2.00	99	91	85	97	90	85	93	88	83	76
2.50	102	95	90	100	94	89	96	91	87	79
3.00	105	99	94	103	97	93	99	95	91	83
4.00	108	103	99	106	102	98	102	98	95	87
5.00	110	106	103	108	104	101	104	101	98	89
ROOM INDEX	UF(total)									Direct
According to DIN EN 13032-2 2004			Suspended				SHRNOM = 1.25			

C Range: 0 - 360DEG
 C Interval: 15.0DEG
 Test Speed: HIGH
 Temperature:25.3DEG
 Operators:Meng yongjian
 Test Date:2018-03-27

γ Range: 0 - 90DEG
 γ Interval: 1.0DEG
 Test System:EVERFINE GO-2000B_V1 SYSTEM V2.0.288
 Humidity:52%
 Test Distance:5.850m [K=1.0000]
 Remarks:

ISOCANDELA DIAGRAM

Test:U:43.40V I:0.2500A P:10.85W PF:1.000 Freq:0Hz Lamp Flux:1679.4lx1 lm		
NAME: FL1200-UL1200-11W-840	TYPE:Linear Light	SERIAL No.:
SPEC.:4000K	DIM.: L1200mm*W50mm*H80mm	
MFR.: NEKO LIGHTING AG		



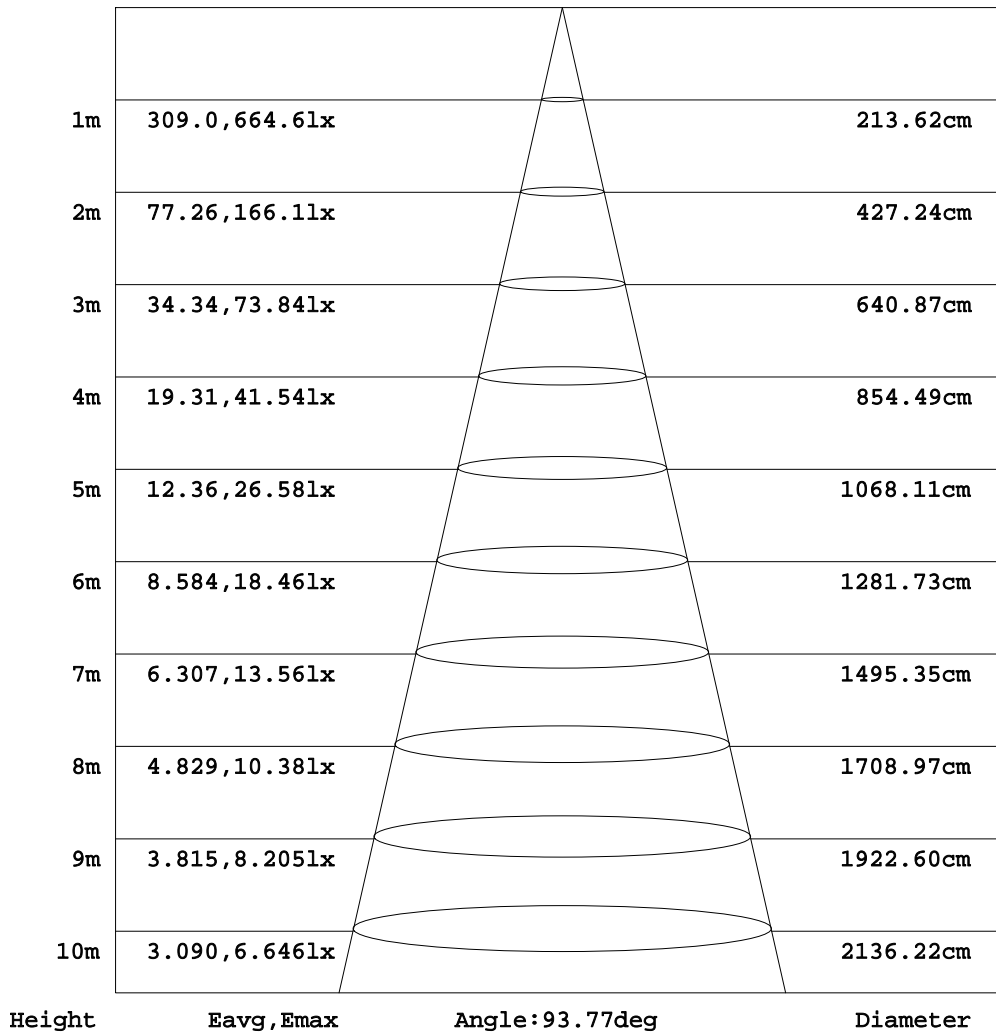
C Range: 0 - 360DEG
C Interval: 15.0DEG
Test Speed: HIGH
Temperature:25.3DEG
Operators:Meng yongjian
Test Date:2018-03-27

γ Range: 0 - 90DEG
γ Interval: 1.0DEG
Test System:EVERFINE GO-2000B_V1 SYSTEM V2.0.288
Humidity:52%
Test Distance:5.850m [K=1.0000]
Remarks:

AAI Figure

Test:U:43.40V I:0.2500A P:10.85W PF:1.000 Freq:0Hz Lamp Flux:1679.41x1 lm		
NAME: FL1200-UL1200-11W-840	TYPE:Linear Light	SERIAL No.:
SPEC.:4000K	DIM.: L1200mm*W50mm*H80mm	
MFR.: NEKO LIGHTING AG		

Flux out:1116 lm



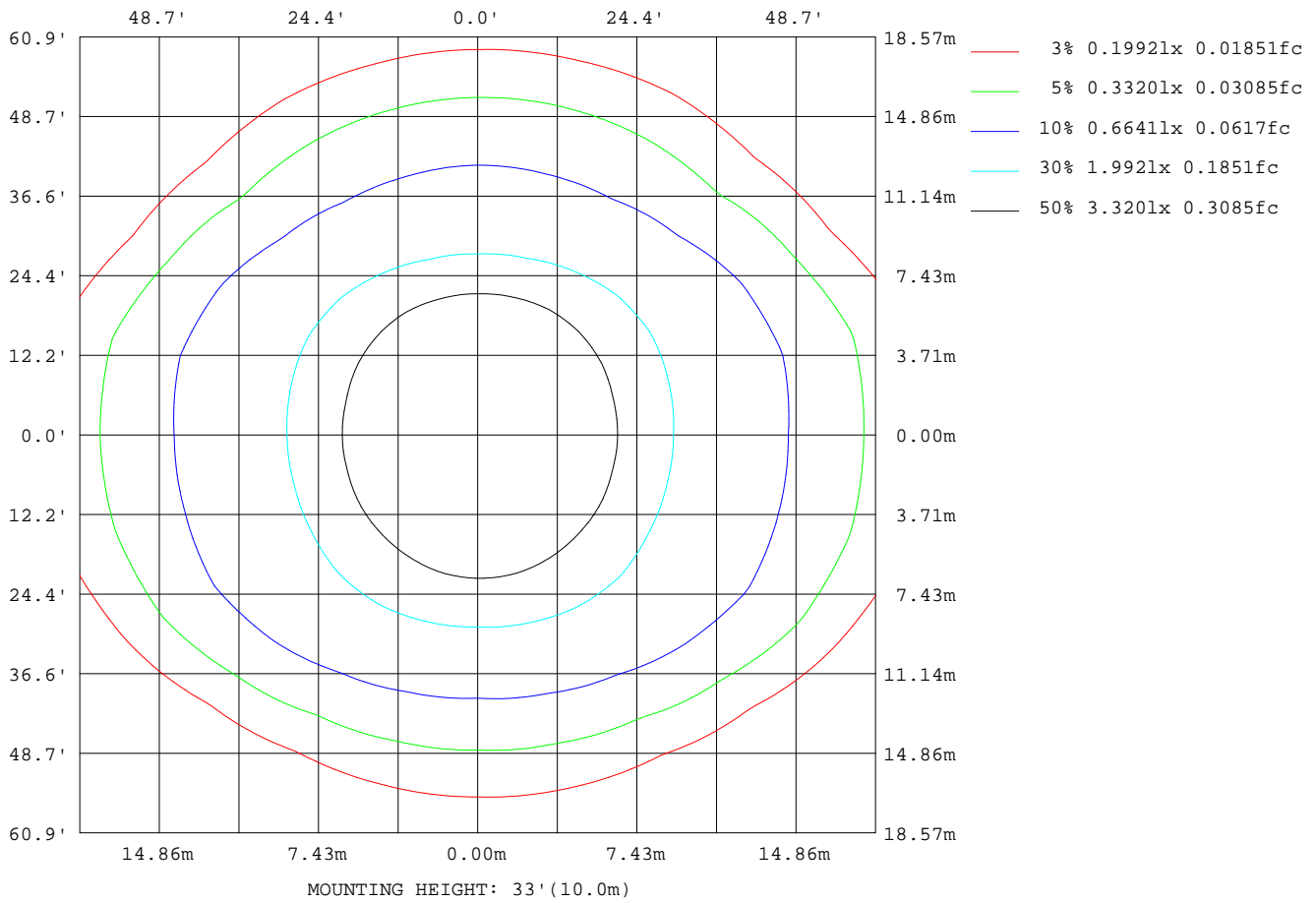
Note: The Curves indicate the illuminated area and the average illumination when the luminaire is at different distance.

C Range: 0 - 360DEG
C Interval: 15.0DEG
Test Speed: HIGH
Temperature: 25.3DEG
Operators: Meng yongjian
Test Date: 2018-03-27

γ Range: 0 - 90DEG
γ Interval: 1.0DEG
Test System: EVERFINE GO-2000B_V1 SYSTEM V2.0.288
Humidity: 52%
Test Distance: 5.850m [K=1.0000]
Remarks:

ISOLUX DIAGRAM

Test:U:43.40V I:0.2500A P:10.85W PF:1.000 Freq:0Hz Lamp Flux:1679.4lx1 lm		
NAME: FL1200-UL1200-11W-840	TYPE:Linear Light	SERIAL No.:
SPEC.:4000K	DIM.: L1200mm*W50mm*H80mm	
MFR.: NEKO LIGHTING AG		



C Range: 0 - 360DEG
 C Interval: 15.0DEG
 Test Speed: HIGH
 Temperature:25.3DEG
 Operators:Meng yongjian
 Test Date:2018-03-27

γ Range: 0 - 90DEG
 γ Interval: 1.0DEG
 Test System:EVERFINE GO-2000B_V1 SYSTEM V2.0.288
 Humidity:52%
 Test Distance:5.850m [K=1.0000]
 Remarks:

LED Avg.L Report

Test:U:43.40V I:0.2500A P:10.85W PF:1.000 Freq:0Hz Lamp Flux:1679.41x1 lm		
NAME: FL1200-UL1200-11W-840	TYPE:Linear Light	SERIAL No.:
SPEC.:4000K	DIM.: L1200mm*W50mm*H80mm	
MFR.: NEKO LIGHTING AG		

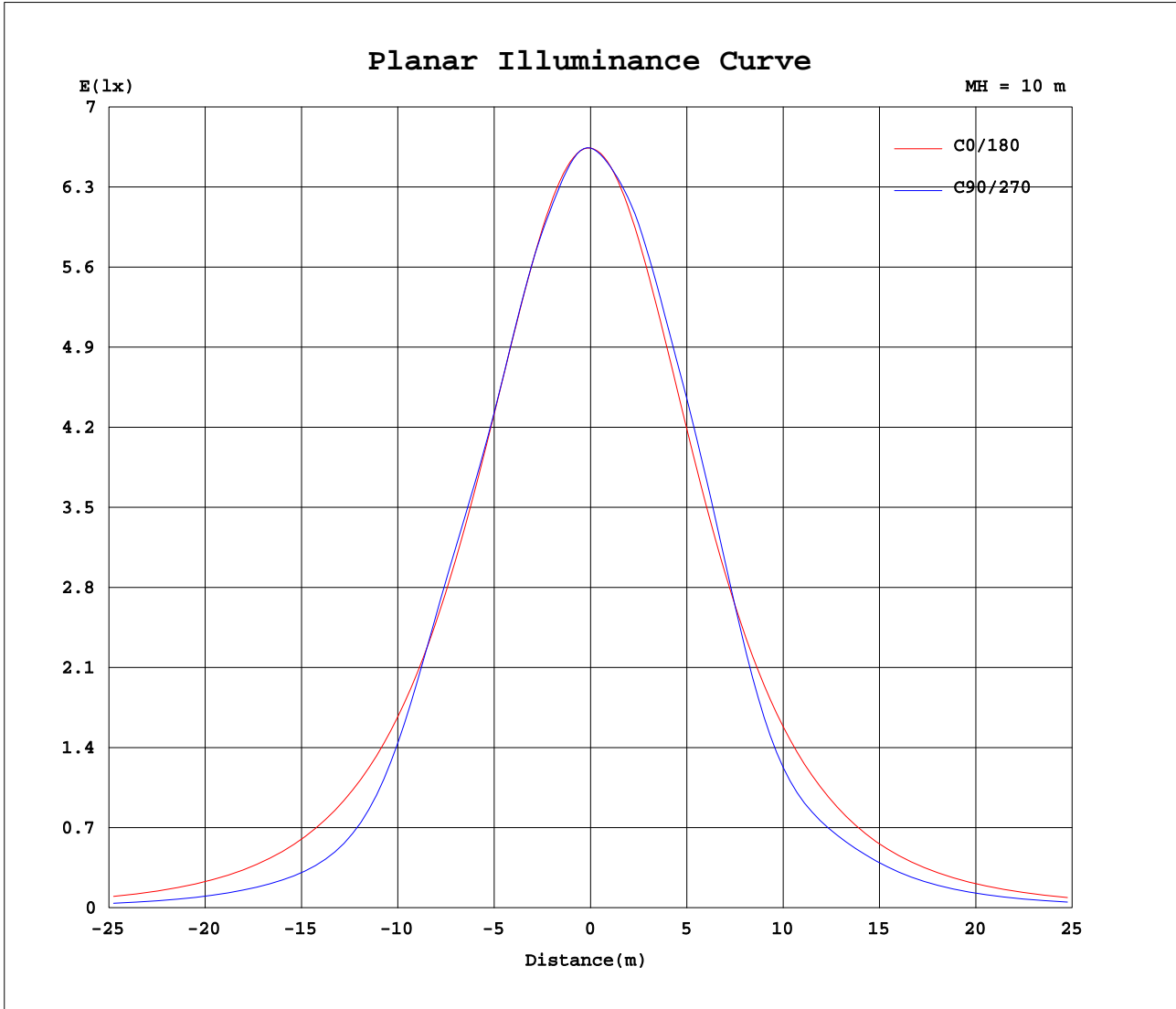
AvgL	cd/m2
L_0~180(65)av	8837
L_0~180(75)av	5390
L_0~180(85)av	1654
L_90~270(65)av	4456
L_90~270(75)av	2728
L_90~270(85)av	79
L_45(65)av	4941
L_45(75)av	2927
L_45(85)av	228

Standard: GB/T 29293-2012

C Range: 0 - 360DEG
C Interval: 15.0DEG
Test Speed: HIGH
Temperature:25.3DEG
Operators:Meng yongjian
Test Date:2018-03-27

γ Range: 0 - 90DEG
γ Interval: 1.0DEG
Test System:EVERFINE GO-2000B_V1 SYSTEM V2.0.288
Humidity:52%
Test Distance:5.850m [K=1.0000]
Remarks:

Planar Illuminance Curve



C Range: 0 - 360DEG
 C Interval: 15.0DEG
 Test Speed: HIGH
 Temperature: 25.3DEG
 Operators: Meng yongjian
 Test Date: 2018-03-27

γ Range: 0 - 90DEG
 γ Interval: 1.0DEG
 Test System: EVERFINE GO-2000B_V1 SYSTEM V2.0.288
 Humidity: 52%
 Test Distance: 5.850m [K=1.0000]
 Remarks:

LUMINOUS DISTRIBUTION INTENSITY DATA

Test:U:43.40V I:0.2500A P:10.85W PF:1.000 Freq:0Hz Lamp Flux:1679.41x1 lm		
NAME: FL1200-UL1200-11W-840	TYPE:Linear Light	SERIAL No.:
SPEC.:4000K	DIM.: L1200mm*W50mm*H80mm	
MFR.: NEKO LIGHTING AG		

Table--1

UNIT: cd

C(DEG)\γ (DEG)	0	15	30	45	60	75	90	105	120	135	150	165	180	195	210	225	240	255	270
0	664	664	664	664	664	664	664	664	664	664	664	664	664	664	664	664	664	664	664
5	664	664	665	664	664	663	662	662	662	662	661	660	660	659	658	657	658	658	659
10	658	659	658	657	655	654	653	652	651	651	651	652	651	648	648	650	652	655	656
15	647	649	646	645	646	647	646	644	640	637	636	638	636	633	636	642	648	651	653
20	632	632	629	633	635	635	633	631	627	622	616	618	617	614	622	630	635	639	641
25	611	610	610	616	615	614	612	609	606	603	594	593	593	591	604	611	617	622	627
30	585	583	588	591	591	594	592	588	580	576	569	563	564	565	580	587	597	600	603
35	553	550	558	561	570	574	572	568	557	544	537	528	531	534	550	560	561	549	548
40	516	514	521	533	539	530	519	523	525	513	499	489	491	500	514	516	489	457	450
45	472	473	481	496	467	429	407	421	451	474	456	446	448	461	472	439	386	351	347
50	424	425	438	419	347	302	282	295	334	396	410	398	400	415	408	337	292	284	288
55	368	369	372	301	231	205	196	201	221	282	342	341	343	358	316	244	237	241	245
60	304	303	269	191	156	149	145	145	148	178	243	275	281	284	217	182	187	184	185
65	234	225	163	118	108	104	101	101	102	109	147	198	214	196	140	132	132	125	125
70	160	140	88.3	73.0	69.9	66.6	63.5	64.6	65.9	67.3	79.9	120	143	113	85.5	84.4	82.7	79.1	79.5
75	89.5	70.3	45.5	42.7	41.4	40.1	38.5	38.9	38.6	39.1	40.8	60.6	77.9	56.2	47.7	47.6	47.6	45.5	46.2
80	38.1	29.2	20.9	21.3	18.7	15.7	15.2	15.1	16.4	19.2	18.5	25.1	32.5	24.1	22.1	22.9	22.0	16.9	16.5
85	9.56	7.73	5.12	1.37	0.77	0.55	0.44	0.49	0.64	1.10	3.81	6.27	7.74	6.29	5.40	1.00	0.61	0.39	0.38
90	0.59	0.40	0.28	0.24	0.20	0.18	0.17	0.17	0.21	0.28	0.36	0.56	0.63	0.51	0.35	0.23	0.18	0.14	0.14

C Range: 0 - 360DEG
 C Interval: 15.0DEG
 Test Speed: HIGH
 Temperature:25.3DEG
 Operators:Meng yongjian
 Test Date:2018-03-27

γ Range: 0 - 90DEG
 γ Interval: 1.0DEG
 Test System:EVERFINE GO-2000B_V1 SYSTEM V2.0.288
 Humidity:52%
 Test Distance:5.850m [K=1.0000]
 Remarks:

LUMINOUS DISTRIBUTION INTENSITY DATA

Test:U:43.40V I:0.2500A P:10.85W PF:1.000 Freq:0Hz Lamp Flux:1679.41x1 lm		
NAME: FL1200-UL1200-11W-840	TYPE:Linear Light	SERIAL No.:
SPEC.:4000K	DIM.: L1200mm*W50mm*H80mm	
MFR.: NEKO LIGHTING AG		

Table--2

UNIT: cd

C(DEG)\ γ (DEG)	285	300	315	330	345														
0	664	664	664	664	664														
5	659	660	660	661	662														
10	657	656	655	655	656														
15	654	653	650	646	645														
20	642	643	640	634	629														
25	627	626	624	619	609														
30	606	607	601	597	585														
35	556	573	576	570	556														
40	464	504	535	536	524														
45	357	400	462	496	486														
50	289	303	359	436	441														
55	246	246	260	344	385														
60	189	197	194	239	312														
65	129	140	143	154	223														
70	81.8	88.3	92.6	95.5	132														
75	47.4	51.2	52.5	53.9	66.9														
80	17.8	24.2	25.3	25.1	28.7														
85	0.45	0.73	1.30	6.60	7.94														
90	0.15	0.17	0.21	0.27	0.38														

C Range: 0 - 360DEG
 C Interval: 15.0DEG
 Test Speed: HIGH
 Temperature:25.3DEG
 Operators:Meng yongjian
 Test Date:2018-03-27
 γ Range: 0 - 90DEG
 γ Interval: 1.0DEG
 Test System:EVERFINE GO-2000B_V1 SYSTEM V2.0.288
 Humidity:52%
 Test Distance:5.850m [K=1.0000]
 Remarks: