

FL450-SL450-3S-15W-840-30



Light Output Ratio:	100.0%	
Luminaire Power:	14.81 W	
SHR Nominal:	0.50	Calculated using the TM5
SHR Maximum:	0.50	fine grid method.

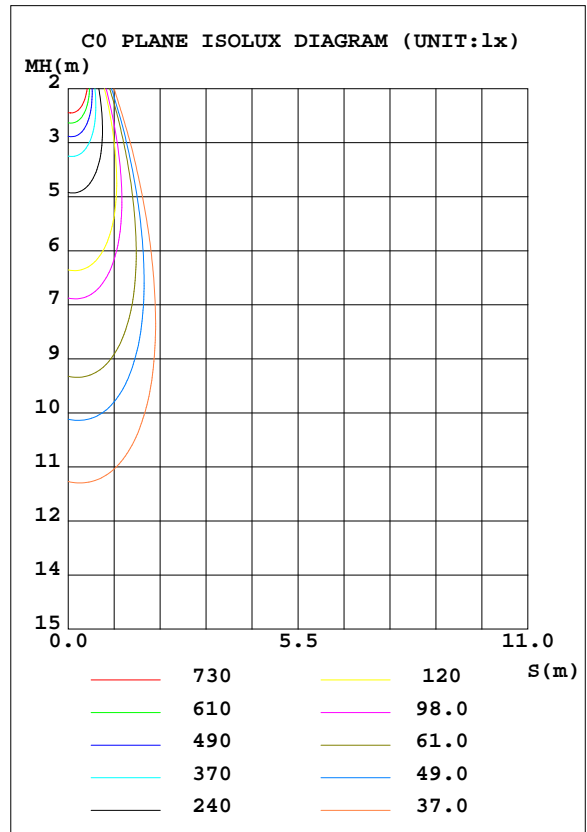
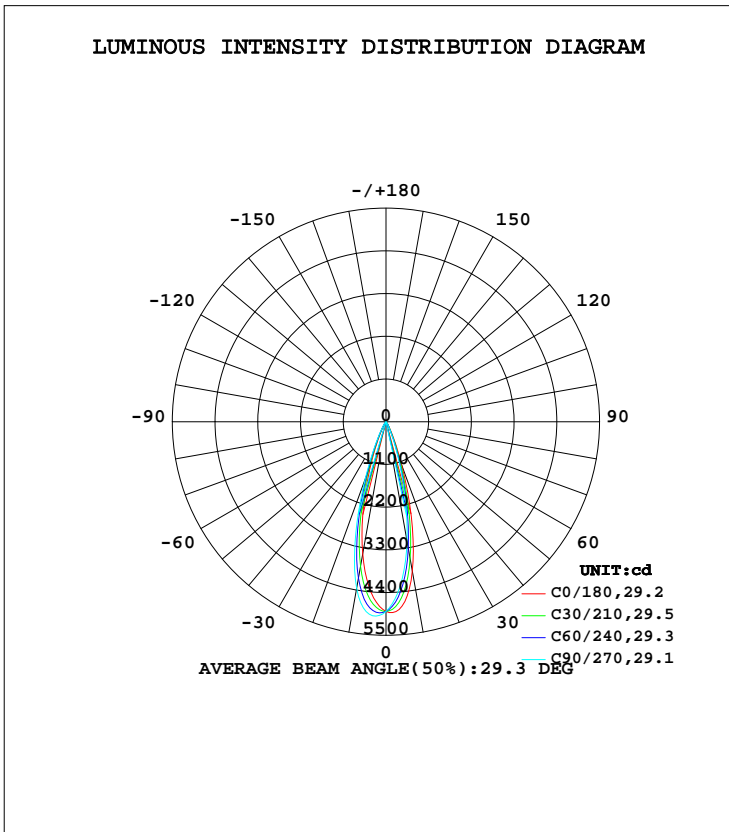
C Range: 0 - 360DEG  
C Interval: 15.0DEG  
Test Speed: HIGH  
Temperature: 25.3DEG  
Operators: Myles  
Test Date: 2019-03-13

$\gamma$  Range: 0 - 90DEG  
 $\gamma$  Interval: 1.0DEG  
Test System: EVERFINE GO-2000B\_V1 SYSTEM V2.0.362  
Humidity: 56%  
Test Distance: 5.850m [K=1.0000]  
Remarks:

**LUMINAIRE PHOTOMETRIC TEST REPORT**

Test:U:221.0V I:0.0693A P:14.81W PF:0.9682 Freq:49.90Hz Lamp Flux:1350.43x1 lm		
NAME: FL450-SL450-3S-15W-840-30	TYPE:Spotlight	SERIAL No.:
SPEC.:4000K	DIM.: L450mm*W45mm*H73mm	
MFR.: NEKO LIGHTING AG		

DATA OF LAMP		PHOTOMETRIC DATA Eff: 91.18 lm/W			
MODEL	CREE-4000K	I <sub>max</sub> (cd)	5012	S/MH(C0/180)	0.47
NOMINAL POWER(W)	15	LOR(%)	100.0	S/MH(C90/270)	0.53
RATED VOLTAGE(V)	220	TOTAL FLUX(lm)	1350.4	η UP, DN(C0-180)	0.0,44.6
NOMINAL FLUX(lm)	1350.43	CIE CLASS	DIRECT	η UP, DN(C180-360)	0.0,55.4
LAMPS INSIDE	1	η up(%)	0.0	CIBSE SHR NOM	0.50
TEST VOLTAGE(V)	220	η down(%)	100.0	CIBSE SHR MAX	0.50



C Range: 0 - 360DEG  
 C Interval: 15.0DEG  
 Test Speed: HIGH  
 Temperature:25.3DEG  
 Operators:Myles  
 Test Date:2019-03-13

γ Range: 0 - 90DEG  
 γ Interval: 1.0DEG  
 Test System:EVERFINE GO-2000B\_V1 SYSTEM V2.0.362  
 Humidity:56%  
 Test Distance:5.850m [K=1.0000]  
 Remarks:

ZONAL FLUX DIAGRAM

ZONAL FLUX DIAGRAM:

$\gamma$	C0	C45	C90	C135	C180	C225	C270	C315	$\gamma$	$\Phi$ zone	$\Phi$ total	%lum, lamp
10	3911	3469	3127	3299	3463	3870	4362	4070	0- 10	409.9	409.9	30.4,30.4
20	1192	944.1	798.4	912.9	1073	1304	1585	1326	10- 20	637.2	1047	77.5,77.5
30	178.7	147.6	126.6	146.2	164.9	199.4	230.4	198.8	20- 30	224.3	1271	94.2,94.2
40	45.10	37.24	32.96	36.57	41.90	49.68	56.01	50.37	30- 40	56.50	1328	98.3,98.3
50	10.93	9.545	8.960	9.508	11.24	11.93	13.38	11.59	40- 50	17.22	1345	99.6,99.6
60	1.328	0.9752	0.8312	0.9114	1.225	1.541	2.000	1.585	50- 60	4.692	1350	100,100
70	0.1719	0.1358	0.1478	0.1340	0.1209	0.1602	0.1606	0.1734	60- 70	0.4200	1350	100,100
80	0.0683	0.0416	0.0618	0.0476	0.0374	0.0570	0.0440	0.0628	70- 80	0.0968	1350	100,100
90	0.0440	0.0416	0.0441	0.0455	0.0286	0.0285	0.0286	0.0303	80- 90	0.0456	1350	100,100
100									90-100			
110									100-110			
120									110-120			
130									120-130			
140									130-140			
150									140-150			
160									150-160			
170									160-170			
180									170-180			
DEG	LUMINOUS INTENSITY:cd									UNIT:lm		

Conical surface Flux(90deg): 1339.1 lm

%lum = 99.2%  
%lamp = 99.2%

Conical surface Flux(120deg): 1349.9 lm

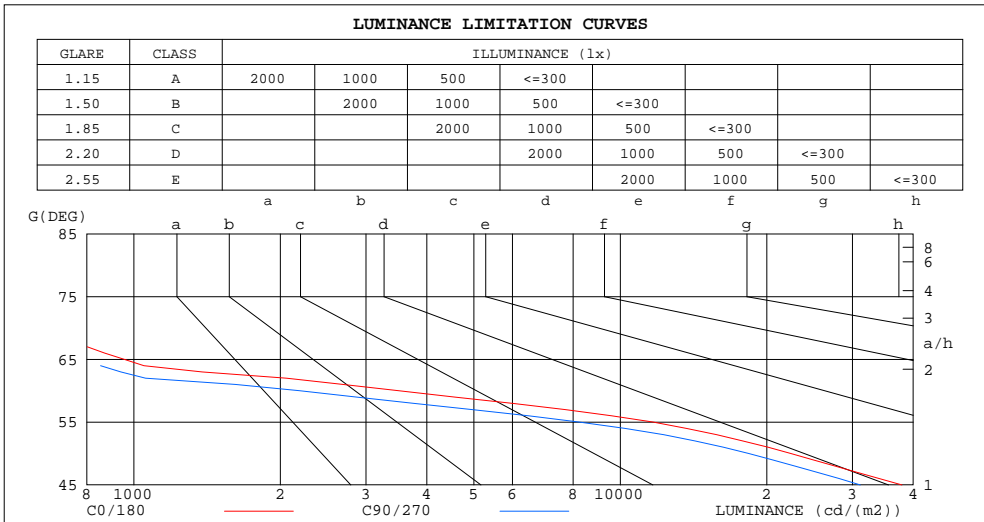
%lum = 100.0%  
%lamp = 100.0%

C Range: 0 - 360DEG  
C Interval: 15.0DEG  
Test Speed: HIGH  
Temperature:25.3DEG  
Operators:Myles  
Test Date:2019-03-13

$\gamma$  Range: 0 - 90DEG  
 $\gamma$  Interval: 1.0DEG  
Test System:EVERFINE GO-2000B\_V1 SYSTEM V2.0.362  
Humidity:56%  
Test Distance:5.850m [K=1.0000]  
Remarks:

**LUMINANCE LIMITATION CURVES**

Test:U:221.0V I:0.0693A P:14.81W PF:0.9682 Freq:49.90Hz Lamp Flux:1350.43x1 lm		
NAME: FL450-SL450-3S-15W-840-30	TYPE:Spotlight	SERIAL No.:
SPEC.:4000K	DIM.: L450mm*W45mm*H73mm	
MFR.: NEKO LIGHTING AG		



LUMINANCE cd/(m2)		
G(DEG)	C0/180	C90/270
85	798	732
80	518	468
75	516	471
70	662	568
65	955	783
60	3496	2187
55	11669	8227
50	22380	18339
45	37920	31134

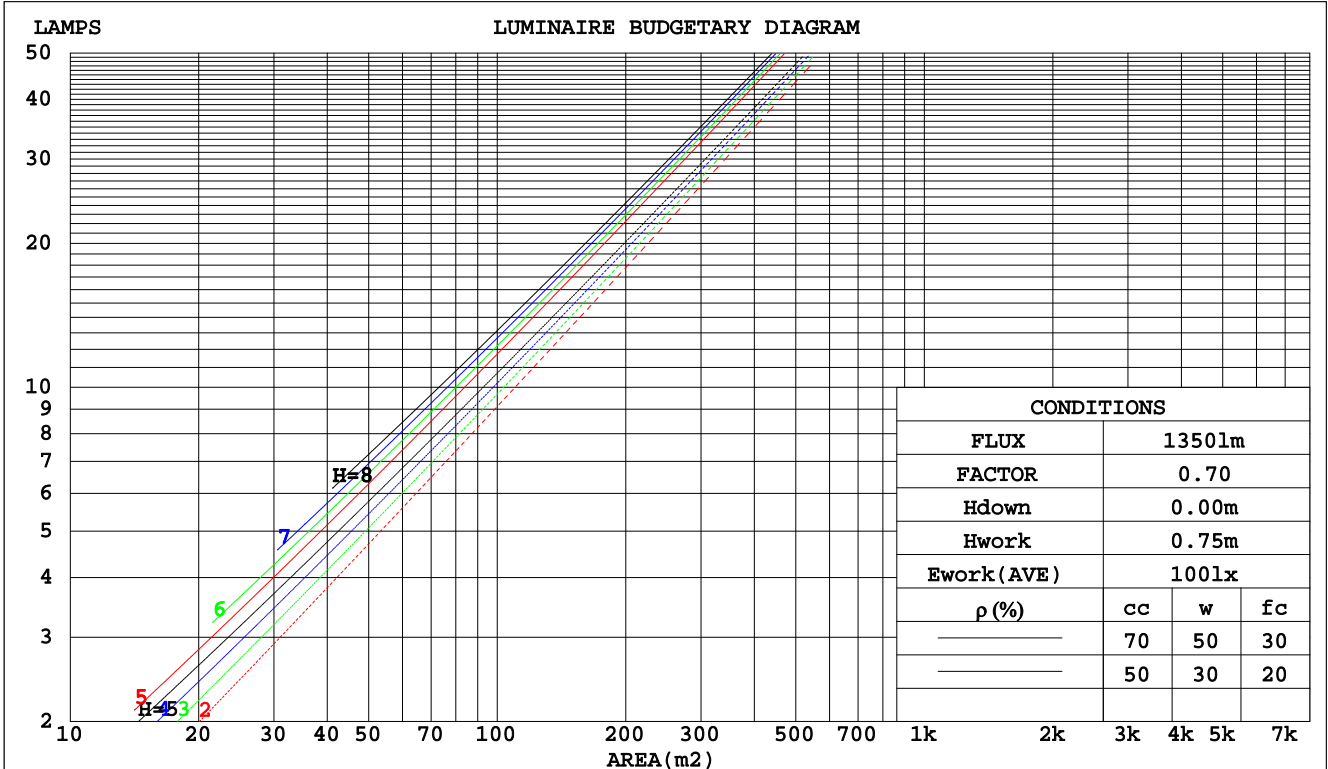
C Range: 0 - 360DEG  
 C Interval: 15.0DEG  
 Test Speed: HIGH  
 Temperature:25.3DEG  
 Operators:Myles  
 Test Date:2019-03-13

γ Range: 0 - 90DEG  
 γ Interval: 1.0DEG  
 Test System:EVERFINE GO-2000B\_V1 SYSTEM V2.0.362  
 Humidity:56%  
 Test Distance:5.850m [K=1.0000]  
 Remarks:

**CU AND LUMINAIRE BUDGETARY ESTIMATE DIAGRAM**

Test:U:221.0V I:0.0693A P:14.81W PF:0.9682 Freq:49.90Hz Lamp Flux:1350.43x1 lm		
NAME: FL450-SL450-3S-15W-840-30	TYPE:Spotlight	SERIAL No.:
SPEC.:4000K	DIM.: L450mm*W45mm*H73mm	
MFR.: NEKO LIGHTING AG		

pcc	80%			70%			50%			30%			10%			0
pw	50%	30%	10%	50%	30%	10%	50%	30%	10%	50%	30%	10%	50%	30%	10%	0
pfc	20%			20%			20%			20%			20%			0
RCR	RCR:Room Cavity Ratio															
	Coefficients of Utilization(CU)															
0.0	1.19	1.19	1.19	1.16	1.16	1.16	1.11	1.11	1.11	1.06	1.06	1.06	1.02	1.02	1.02	1.00
1.0	1.13	1.11	1.09	1.11	1.09	1.07	1.07	1.05	1.04	1.03	1.02	1.01	.00	.99	.98	.96
2.0	1.07	1.04	1.02	1.06	1.03	1.00	1.02	1.00	.98	.00	.98	.96	.97	.96	.94	.93
3.0	1.02	.99	.96	1.01	.98	.95	.99	.96	.94	.96	.94	.92	.94	.92	.91	.89
4.0	.98	.94	.91	.97	.93	.90	.95	.92	.89	.93	.91	.88	.92	.89	.87	.86
5.0	.94	.90	.87	.94	.90	.87	.92	.88	.86	.90	.87	.85	.89	.86	.84	.83
6.0	.91	.87	.83	.90	.86	.83	.89	.85	.83	.88	.85	.82	.86	.84	.82	.81
7.0	.88	.83	.80	.87	.83	.80	.86	.82	.80	.85	.82	.79	.84	.81	.79	.78
8.0	.85	.81	.78	.84	.80	.77	.83	.80	.77	.82	.79	.77	.82	.79	.77	.76
9.0	.82	.78	.75	.82	.78	.75	.81	.77	.75	.80	.77	.74	.79	.76	.74	.73
10.0	.80	.75	.73	.79	.75	.73	.79	.75	.72	.78	.75	.72	.77	.74	.72	.71



C Range: 0 - 360DEG  
C Interval: 15.0DEG  
Test Speed: HIGH  
Temperature:25.3DEG  
Operators:Myles  
Test Date:2019-03-13

γ Range: 0 - 90DEG  
γ Interval: 1.0DEG  
Test System:EVERFINE GO-2000B\_V1 SYSTEM V2.0.362  
Humidity:56%  
Test Distance:5.850m [K=1.0000]  
Remarks:

WEC AND CCEC

Test:U:221.0V I:0.0693A P:14.81W PF:0.9682 Freq:49.90Hz Lamp Flux:1350.43x1 lm		
NAME: FL450-SL450-3S-15W-840-30	TYPE:Spotlight	SERIAL No.:
SPEC.:4000K	DIM.: L450mm*W45mm*H73mm	
MFR.: NEKO LIGHTING AG		

ρcc	80%			70%			50%			30%			10%			0
ρw	50%	30%	10%	50%	30%	10%	50%	30%	10%	50%	30%	10%	50%	30%	10%	0
ρfc	20%			20%			20%			20%			20%			0
RCR	RCR:Room Cavity Ratio						Wall Exitance Coefficients(WEC)									
0.0																
1.0	.140	.080	.025	.134	.076	.024	.121	.070	.022	.110	.063	.020	.099	.058	.019	
2.0	.131	.072	.022	.125	.069	.021	.115	.064	.020	.105	.059	.019	.097	.055	.017	
3.0	.122	.065	.019	.118	.063	.019	.109	.059	.018	.101	.055	.017	.094	.052	.016	
4.0	.115	.060	.018	.111	.058	.017	.104	.055	.016	.097	.052	.016	.091	.049	.015	
5.0	.108	.055	.016	.105	.054	.016	.099	.052	.015	.093	.049	.015	.088	.047	.014	
6.0	.103	.052	.015	.100	.050	.015	.095	.049	.014	.090	.047	.014	.085	.045	.013	
7.0	.098	.048	.014	.095	.048	.014	.091	.046	.013	.086	.044	.013	.082	.043	.013	
8.0	.093	.046	.013	.091	.045	.013	.087	.044	.012	.083	.042	.012	.080	.041	.012	
9.0	.089	.043	.012	.087	.043	.012	.084	.041	.012	.080	.040	.012	.077	.039	.011	
10.0	.086	.041	.011	.084	.041	.011	.081	.040	.011	.078	.039	.011	.075	.038	.011	

ρcc	80%			70%			50%			30%			10%			0
ρw	50%	30%	10%	50%	30%	10%	50%	30%	10%	50%	30%	10%	50%	30%	10%	0
ρfc	20%			20%			20%			20%			20%			0
RCR	RCR:Room Cavity Ratio						Ceiling Cavity Exitance Coefficients(CCEC)									
0.0	.190	.190	.190	.163	.163	.163	.111	.111	.111	.064	.064	.064	.020	.020	.020	
1.0	.169	.158	.148	.144	.135	.127	.099	.093	.088	.057	.054	.051	.018	.017	.017	
2.0	.151	.133	.118	.129	.114	.102	.088	.079	.071	.051	.046	.042	.016	.015	.014	
3.0	.136	.113	.095	.117	.098	.083	.080	.068	.058	.046	.040	.034	.015	.013	.011	
4.0	.124	.098	.078	.106	.085	.068	.073	.059	.048	.042	.035	.028	.014	.011	.009	
5.0	.113	.086	.065	.097	.074	.057	.067	.052	.040	.039	.030	.024	.013	.010	.008	
6.0	.105	.076	.055	.090	.066	.048	.062	.046	.034	.036	.027	.020	.012	.009	.007	
7.0	.097	.068	.047	.084	.059	.041	.058	.041	.029	.034	.024	.017	.011	.008	.006	
8.0	.091	.061	.040	.078	.053	.035	.054	.037	.025	.031	.022	.015	.010	.007	.005	
9.0	.085	.055	.035	.074	.048	.031	.051	.034	.022	.030	.020	.013	.010	.007	.004	
10.0	.081	.051	.031	.069	.044	.027	.048	.031	.019	.028	.018	.011	.009	.006	.004	

C Range: 0 - 360DEG  
 C Interval: 15.0DEG  
 Test Speed: HIGH  
 Temperature:25.3DEG  
 Operators:Myles  
 Test Date:2019-03-13

γ Range: 0 - 90DEG  
 γ Interval: 1.0DEG  
 Test System:EVERFINE GO-2000B\_V1 SYSTEM V2.0.362  
 Humidity:56%  
 Test Distance:5.850m [K=1.0000]  
 Remarks:

UGR(Unified Glare Rating) Table

Test:U:221.0V I:0.0693A P:14.81W PF:0.9682 Freq:49.90Hz Lamp Flux:1350.43x1 lm		
NAME: FL450-SL450-3S-15W-840-30	TYPE:Spotlight	SERIAL No.:
SPEC.:4000K	DIM.: L450mm*W45mm*H73mm	
MFR.: NEKO LIGHTING AG		

ceiling/cavity	0.7	0.7	0.5	0.5	0.3	0.7	0.7	0.5	0.5	0.3
walls	0.5	0.3	0.5	0.3	0.3	0.5	0.3	0.5	0.3	0.3
working plane	0.2	0.2	0.2	0.2	0.2	0.2	0.2	0.2	0.2	0.2
Room dimensions	Viewed crosswise					Viewed endwise				
x = 2H y = 2H	14.3	14.9	14.5	15.1	15.2	12.9	13.5	13.1	13.7	13.8
3H	14.1	14.8	14.4	14.9	15.1	12.7	13.3	12.9	13.5	13.7
4H	14.0	14.6	14.3	14.8	15.1	12.6	13.2	12.9	13.4	13.6
6H	14.0	14.5	14.2	14.8	15.0	12.5	13.1	12.8	13.3	13.6
8H	13.9	14.5	14.2	14.7	15.0	12.5	13.0	12.8	13.3	13.5
12H	13.9	14.4	14.2	14.7	14.9	12.4	13.0	12.8	13.2	13.5
4H 2H	14.1	14.7	14.3	14.9	15.1	12.6	13.2	12.9	13.4	13.7
3H	13.9	14.4	14.2	14.7	14.9	12.5	13.0	12.8	13.3	13.5
4H	13.8	14.3	14.1	14.6	14.9	12.4	12.9	12.7	13.1	13.4
6H	13.7	14.1	14.0	14.4	14.8	12.3	12.7	12.6	13.0	13.4
8H	13.6	14.0	14.0	14.4	14.7	12.2	12.6	12.6	13.0	13.3
12H	13.6	13.9	14.0	14.3	14.7	12.2	12.5	12.6	12.9	13.3
8H 4H	13.6	14.0	14.0	14.4	14.7	12.2	12.6	12.6	13.0	13.3
6H	13.5	13.8	13.9	14.2	14.6	12.1	12.4	12.5	12.8	13.2
8H	13.5	13.7	13.9	14.2	14.6	12.0	12.3	12.5	12.8	13.2
12H	13.4	13.6	13.9	14.1	14.6	12.0	12.2	12.4	12.7	13.1
12H 4H	13.6	13.9	14.0	14.3	14.7	12.2	12.5	12.6	12.9	13.3
6H	13.5	13.7	13.9	14.2	14.6	12.0	12.3	12.5	12.7	13.2
8H	13.4	13.6	13.9	14.1	14.6	12.0	12.2	12.4	12.7	13.1
Variations with the observer position at spacings:										
S = 1.0H	+ 3.6 / -11.6					+ 3.1 / -12.0				
1.5H	+ 5.4 / - 8.2					+ 4.6 / - 7.5				
2.0H	+ 5.9 / -15.6					+ 5.5 / -15.1				

CIE Pub.117, 1350 lm Total Lamp Luminous Flux Correct (8log(F/F0) = 1.0)

C Range: 0 - 360DEG  
 C Interval: 15.0DEG  
 Test Speed: HIGH  
 Temperature:25.3DEG  
 Operators:Myles  
 Test Date:2019-03-13

γ Range: 0 - 90DEG  
 γ Interval: 1.0DEG  
 Test System:EVERFINE GO-2000B\_V1 SYSTEM V2.0.362  
 Humidity:56%  
 Test Distance:5.850m [K=1.0000]  
 Remarks:

UTILIZATION FACTORS TABLE

Test:U:221.0V I:0.0693A P:14.81W PF:0.9682 Freq:49.90Hz Lamp Flux:1350.43x1 lm		
NAME: FL450-SL450-3S-15W-840-30	TYPE:Spotlight	SERIAL No.:
SPEC.:4000K	DIM.: L450mm*W45mm*H73mm	
MFR.: NEKO LIGHTING AG		

REFLECTANCE										
Ceiling	0.8	0.8	0.8	0.7	0.7	0.7	0.5	0.5	0.5	0
Walls	0.7	0.5	0.3	0.7	0.5	0.3	0.7	0.5	0.3	0
Working plane	0.2	0.2	0.2	0.2	0.2	0.2	0.2	0.2	0.2	0
ROOM INDEX	UTILIZATION FACTORS(PERCENT) $k(RI) \times RCR = 5$									
k = 0.60	91	85	81	90	85	81	89	84	81	78
0.80	98	92	89	97	92	89	96	91	88	85
1.00	101	96	93	101	96	93	99	96	92	89
1.25	105	100	97	104	100	97	102	99	96	92
1.50	107	103	100	106	102	100	104	101	99	94
2.00	110	106	103	108	105	102	106	103	101	96
2.50	111	108	105	110	107	104	107	104	102	97
3.00	113	109	107	111	108	106	108	105	104	97
4.00	114	112	110	112	110	109	109	107	106	99
5.00	116	114	112	114	112	110	110	108	107	100
ROOM INDEX	UF(total)									Direct
According to DIN EN 13032-2 2004			Suspended				SHRNOM = 1.25			

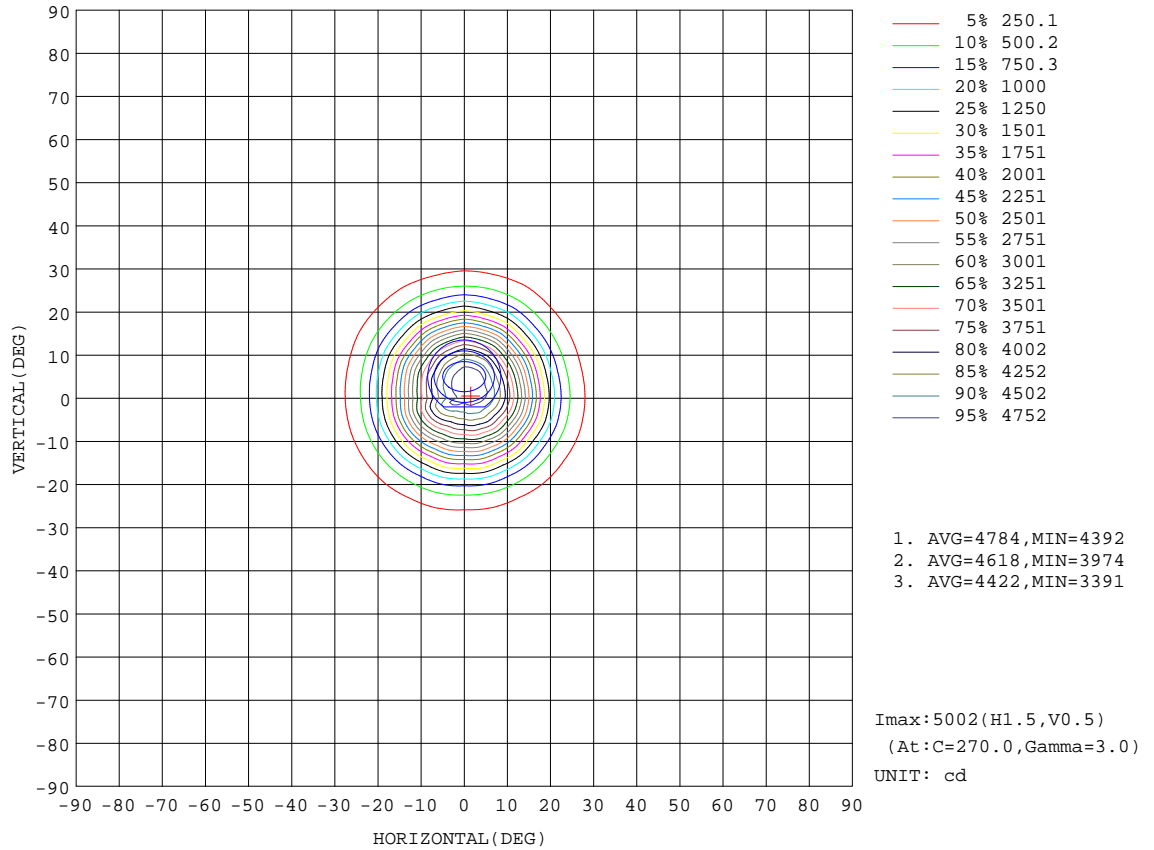
C Range: 0 - 360DEG  
 C Interval: 15.0DEG  
 Test Speed: HIGH  
 Temperature:25.3DEG  
 Operators:Myles  
 Test Date:2019-03-13

$\gamma$  Range: 0 - 90DEG  
 $\gamma$  Interval: 1.0DEG  
 Test System:EVERFINE GO-2000B\_V1 SYSTEM V2.0.362  
 Humidity:56%  
 Test Distance:5.850m [K=1.0000]  
 Remarks:



ISOCANDELA DIAGRAM

Test:U:221.0V I:0.0693A P:14.81W PF:0.9682 Freq:49.90Hz Lamp Flux:1350.43x1 lm		
NAME: FL450-SL450-3S-15W-840-30	TYPE:Spotlight	SERIAL No.:
SPEC.:4000K	DIM.: L450mm*W45mm*H73mm	
MFR.: NEKO LIGHTING AG		

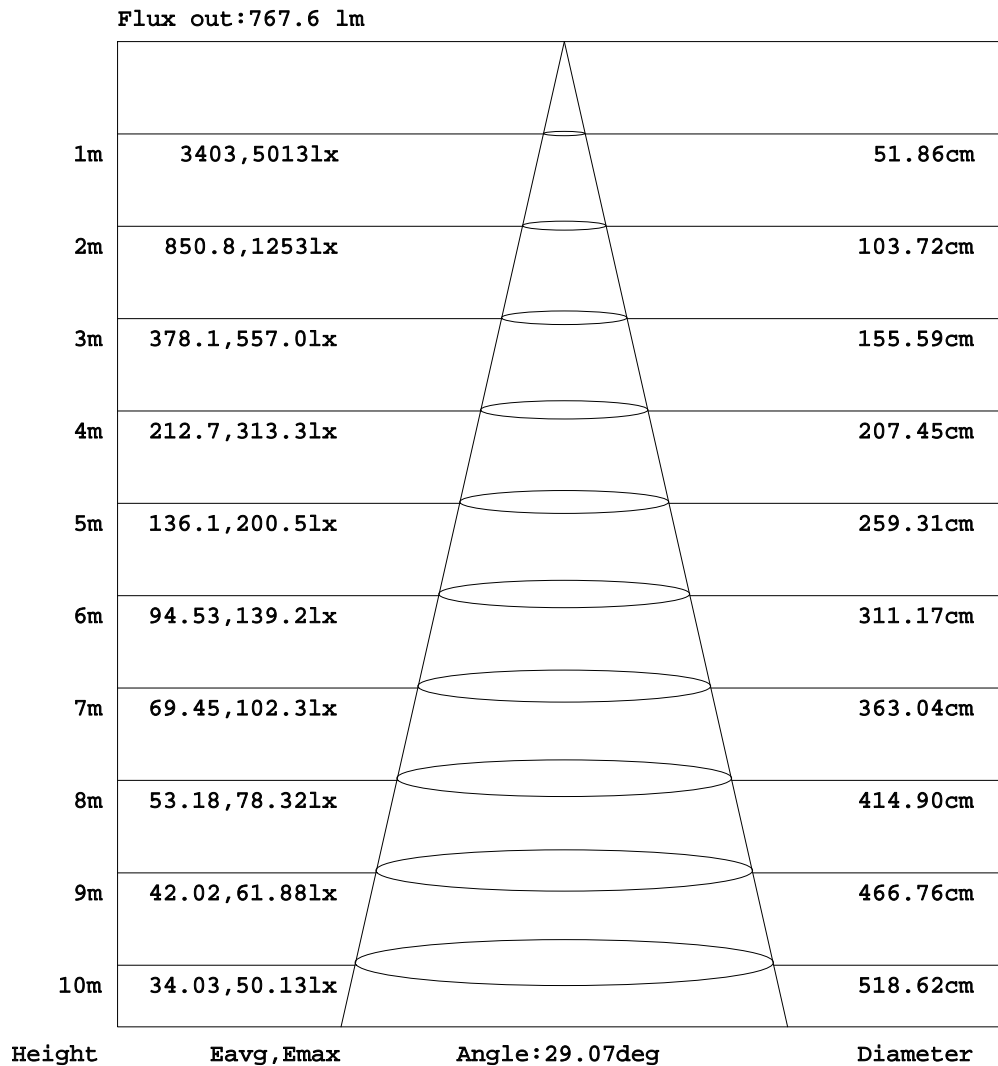


C Range: 0 - 360DEG  
C Interval: 15.0DEG  
Test Speed: HIGH  
Temperature:25.3DEG  
Operators:Myles  
Test Date:2019-03-13

γ Range: 0 - 90DEG  
γ Interval: 1.0DEG  
Test System:EVERFINE GO-2000B\_V1 SYSTEM V2.0.362  
Humidity:56%  
Test Distance:5.850m [K=1.0000]  
Remarks:

**AAI Figure**

Test:U:221.0V I:0.0693A P:14.81W PF:0.9682 Freq:49.90Hz Lamp Flux:1350.43x1 lm		
NAME: FL450-SL450-3S-15W-840-30	TYPE:Spotlight	SERIAL No.:
SPEC.:4000K	DIM.: L450mm*W45mm*H73mm	
MFR.: NEKO LIGHTING AG		



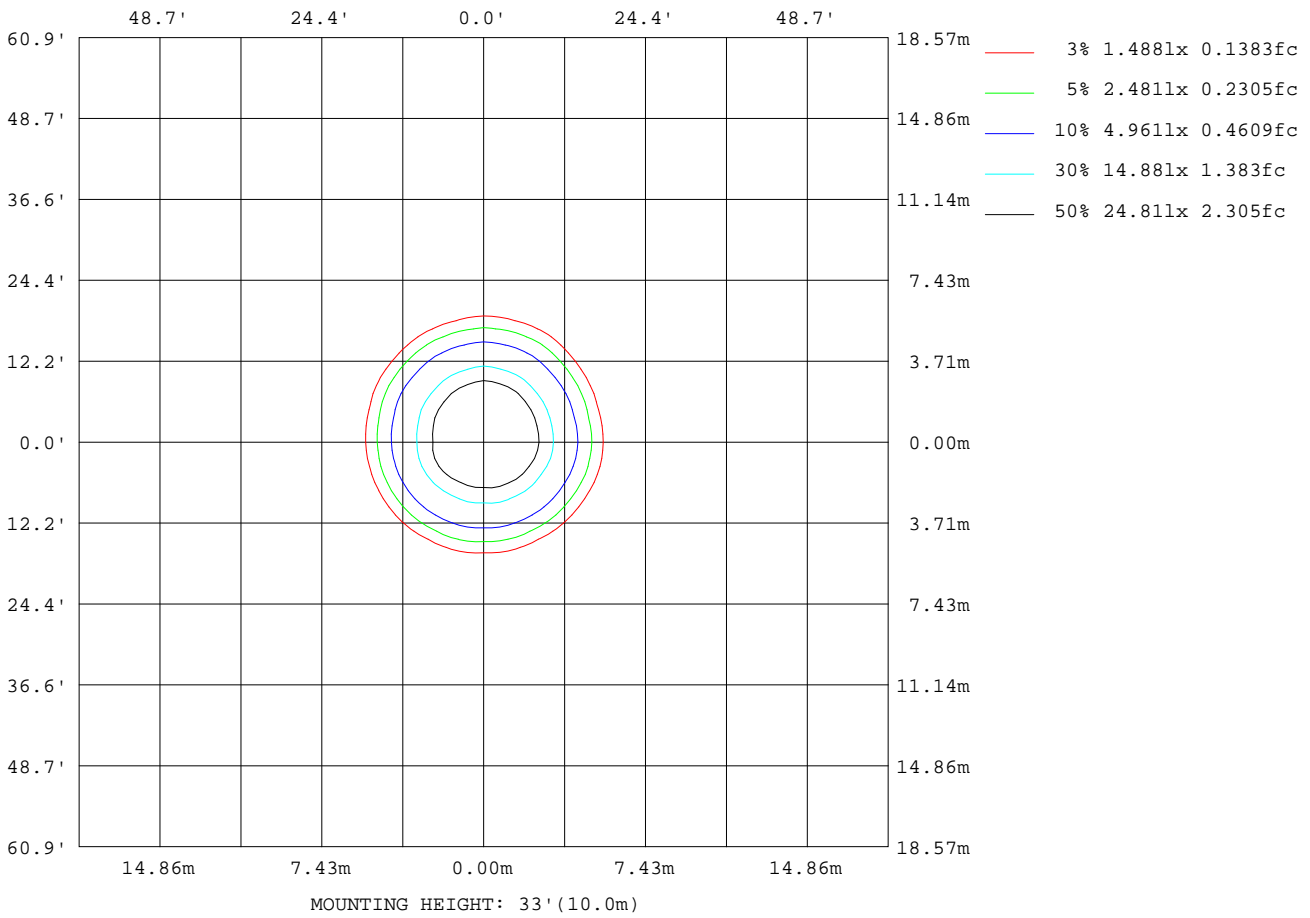
Note:The Curves indicate the illuminated area and the average illumination when the luminaire is at different distance.

C Range: 0 - 360DEG  
C Interval: 15.0DEG  
Test Speed: HIGH  
Temperature:25.3DEG  
Operators:Myles  
Test Date:2019-03-13

γ Range: 0 - 90DEG  
γ Interval: 1.0DEG  
Test System:EVERFINE GO-2000B\_V1 SYSTEM V2.0.362  
Humidity:56%  
Test Distance:5.850m [K=1.0000]  
Remarks:

**ISOLUX DIAGRAM**

Test:U:221.0V I:0.0693A P:14.81W PF:0.9682 Freq:49.90Hz Lamp Flux:1350.43x1 lm		
NAME: FL450-SL450-3S-15W-840-30	TYPE:Spotlight	SERIAL No.:
SPEC.:4000K	DIM.: L450mm*W45mm*H73mm	
MFR.: NEKO LIGHTING AG		



C Range: 0 - 360DEG  
C Interval: 15.0DEG  
Test Speed: HIGH  
Temperature:25.3DEG  
Operators:Myles  
Test Date:2019-03-13

γ Range: 0 - 90DEG  
γ Interval: 1.0DEG  
Test System:EVERFINE GO-2000B\_V1 SYSTEM V2.0.362  
Humidity:56%  
Test Distance:5.850m [K=1.0000]  
Remarks:

LED Avg.L Report

Test:U:221.0V I:0.0693A P:14.81W PF:0.9682 Freq:49.90Hz Lamp Flux:1350.43x1 lm		
NAME: FL450-SL450-3S-15W-840-30	TYPE:Spotlight	SERIAL No.:
SPEC.:4000K	DIM.: L450mm*W45mm*H73mm	
MFR.: NEKO LIGHTING AG		

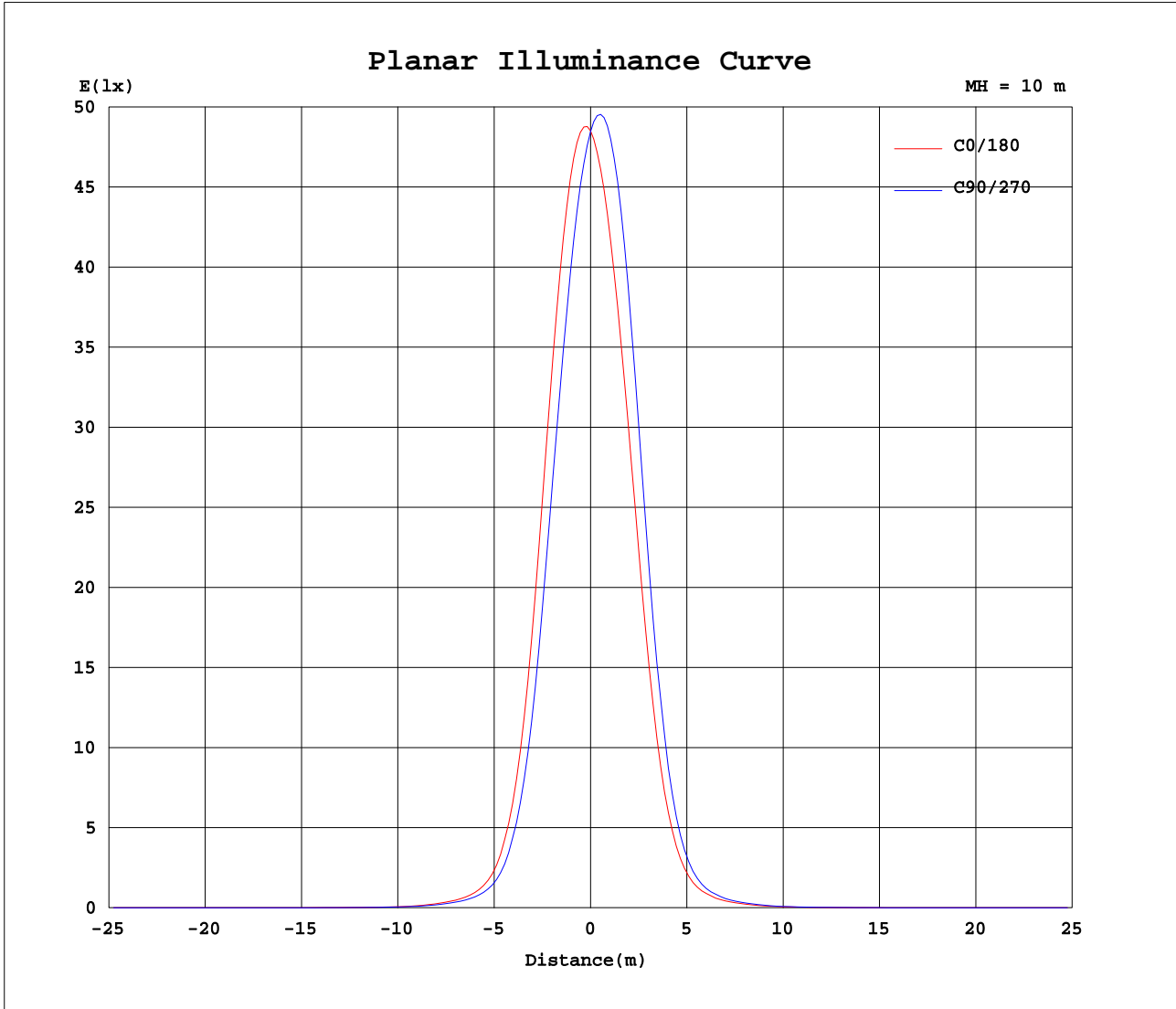
AvgL	cd/m2
L_0~180(65)av	867
L_0~180(75)av	423
L_0~180(85)av	636
L_90~270(65)av	908
L_90~270(75)av	451
L_90~270(85)av	653
L_45(65)av	884
L_45(75)av	449
L_45(85)av	613

Standard: GB/T 29293-2012

C Range: 0 - 360DEG  
C Interval: 15.0DEG  
Test Speed: HIGH  
Temperature:25.3DEG  
Operators:Myles  
Test Date:2019-03-13

γ Range: 0 - 90DEG  
γ Interval: 1.0DEG  
Test System:EVERFINE GO-2000B\_V1 SYSTEM V2.0.362  
Humidity:56%  
Test Distance:5.850m [K=1.0000]  
Remarks:

Planar Illuminance Curve



C Range: 0 - 360DEG  
 C Interval: 15.0DEG  
 Test Speed: HIGH  
 Temperature: 25.3DEG  
 Operators: Myles  
 Test Date: 2019-03-13

$\gamma$  Range: 0 - 90DEG  
 $\gamma$  Interval: 1.0DEG  
 Test System: EVERFINE GO-2000B\_V1 SYSTEM V2.0.362  
 Humidity: 56%  
 Test Distance: 5.850m [K=1.0000]  
 Remarks:

**LUMINOUS DISTRIBUTION INTENSITY DATA**

Test:U:221.0V I:0.0693A P:14.81W PF:0.9682 Freq:49.90Hz Lamp Flux:1350.43x1 lm		
NAME: FL450-SL450-3S-15W-840-30	TYPE:Spotlight	SERIAL No.:
SPEC.:4000K	DIM.: L450mm*W45mm*H73mm	
MFR.: NEKO LIGHTING AG		

Table--1

UNIT: cd

C(DEC) γ (DEC)	0	15	30	45	60	75	90	105	120	135	150	165	180	195	210	225	240	255	270
0	4884	4884	4884	4884	4884	4884	4884	4884	4884	4884	4884	4884	4884	4884	4884	4884	4884	4884	4884
5	4765	4683	4557	4485	4375	4323	4243	4245	4253	4341	4445	4469	4412	4493	4618	4688	4812	4880	4975
10	3911	3789	3582	3469	3304	3238	3127	3157	3169	3299	3456	3511	3463	3584	3779	3870	4090	4194	4362
15	2517	2412	2202	2094	1941	1898	1810	1864	1879	2004	2123	2188	2214	2327	2528	2606	2817	2877	3036
20	1192	1138	1009	944	856	839	798	840	842	913	969	1021	1073	1134	1265	1304	1449	1459	1585
25	452	431	375	348	314	311	297	315	318	344	361	385	417	444	502	530	569	594	615
30	179	172	154	148	132	134	127	135	134	146	146	153	165	174	193	199	216	215	230
35	88.5	86.5	79.0	73.8	68.9	66.6	65.8	68.3	69.6	72.2	73.5	75.0	79.5	84.5	92.7	95.4	99.6	100	106
40	45.1	43.5	39.1	37.2	34.2	34.0	33.0	34.4	34.4	36.6	37.3	38.8	41.9	43.9	48.2	49.7	52.7	53.2	56.0
45	20.4	19.5	18.2	17.9	17.1	17.1	16.7	17.1	17.0	18.0	18.3	19.1	20.7	21.0	22.1	22.6	24.2	24.4	25.3
50	10.9	10.5	9.69	9.55	9.20	9.24	8.96	9.05	8.93	9.51	9.85	10.3	11.2	11.3	11.7	11.9	12.9	13.0	13.4
55	5.08	4.80	4.27	4.18	3.85	3.82	3.59	3.70	3.66	4.07	4.26	4.59	5.15	5.26	5.55	5.74	6.30	6.40	6.64
60	1.33	1.18	0.98	0.98	0.93	0.92	0.83	0.83	0.78	0.91	1.04	1.14	1.22	1.27	1.42	1.54	1.82	1.90	2.00
65	0.31	0.28	0.29	0.26	0.27	0.24	0.25	0.23	0.25	0.24	0.25	0.23	0.25	0.28	0.28	0.31	0.30	0.33	0.33
70	0.17	0.15	0.16	0.14	0.15	0.13	0.15	0.13	0.14	0.13	0.14	0.12	0.12	0.15	0.14	0.16	0.15	0.17	0.16
75	0.10	0.08	0.10	0.08	0.09	0.07	0.09	0.07	0.09	0.07	0.09	0.07	0.06	0.09	0.07	0.10	0.08	0.10	0.08
80	0.07	0.05	0.07	0.04	0.07	0.05	0.06	0.04	0.06	0.05	0.06	0.04	0.04	0.06	0.04	0.06	0.04	0.06	0.04
85	0.05	0.04	0.05	0.04	0.05	0.05	0.05	0.04	0.05	0.04	0.05	0.04	0.03	0.04	0.03	0.04	0.03	0.04	0.04
90	0.04	0.04	0.04	0.04	0.05	0.05	0.04	0.04	0.05	0.05	0.05	0.04	0.03	0.03	0.03	0.03	0.02	0.03	0.03

C Range: 0 - 360DEG  
C Interval: 15.0DEG  
Test Speed: HIGH  
Temperature:25.3DEG  
Operators:Myles  
Test Date:2019-03-13

γ Range: 0 - 90DEG  
γ Interval: 1.0DEG  
Test System:EVERFINE GO-2000B\_V1 SYSTEM V2.0.362  
Humidity:56%  
Test Distance:5.850m [K=1.0000]  
Remarks:

LUMINOUS DISTRIBUTION INTENSITY DATA

Test:U:221.0V I:0.0693A P:14.81W PF:0.9682 Freq:49.90Hz Lamp Flux:1350.43x1 lm		
NAME: FL450-SL450-3S-15W-840-30	TYPE:Spotlight	SERIAL No.:
SPEC.:4000K	DIM.: L450mm*W45mm*H73mm	
MFR.: NEKO LIGHTING AG		

Table--2

UNIT: cd

C(DEG) γ (DEG)	285	300	315	330	345															
0	4884	4884	4884	4884	4884															
5	4966	4956	4845	4743	4702															
10	4302	4276	4070	3933	3831															
15	2951	2933	2714	2595	2458															
20	1488	1494	1326	1259	1165															
25	610	586	522	477	437															
30	225	226	199	184	170															
35	107	108	96.9	88.5	83.4															
40	55.1	55.6	50.4	47.7	44.9															
45	24.1	23.7	22.0	21.8	20.7															
50	12.6	12.3	11.6	11.7	11.2															
55	6.17	5.97	5.65	5.74	5.38															
60	1.81	1.74	1.58	1.60	1.46															
65	0.34	0.32	0.32	0.30	0.31															
70	0.18	0.16	0.17	0.15	0.17															
75	0.11	0.09	0.11	0.08	0.10															
80	0.06	0.04	0.06	0.04	0.06															
85	0.04	0.03	0.04	0.03	0.04															
90	0.03	0.03	0.03	0.02	0.03															

C Range: 0 - 360DEG  
 C Interval: 15.0DEG  
 Test Speed: HIGH  
 Temperature:25.3DEG  
 Operators:Myles  
 Test Date:2019-03-13

γ Range: 0 - 90DEG  
 γ Interval: 1.0DEG  
 Test System:EVERFINE GO-2000B\_V1 SYSTEM V2.0.362  
 Humidity:56%  
 Test Distance:5.850m [K=1.0000]  
 Remarks: