

LED Linear Light FL300-SL300-2S-8W-940-55



Light Output Ratio:	100.0%	
Luminaire Power:	7.5 W	
SHR Nominal:	0.75	Calculated using the TM5
SHR Maximum:	0.90	fine grid method.

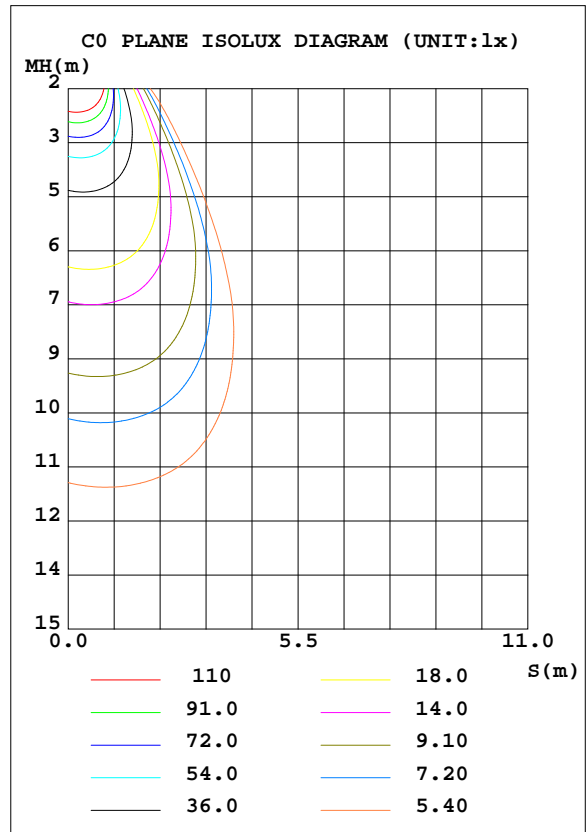
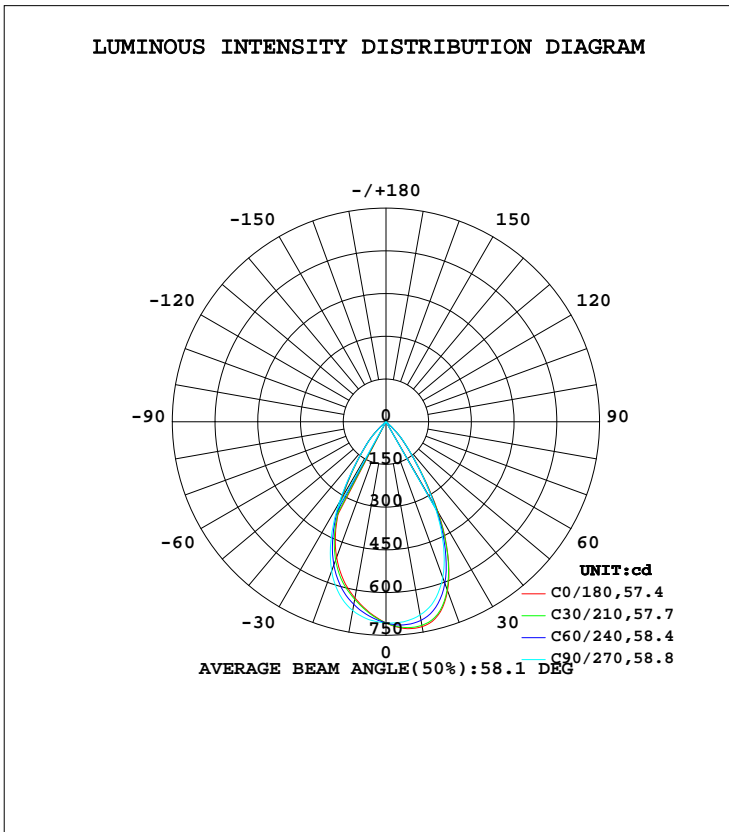
C Range: 0 - 360DEG
 C Interval: 15.0DEG
 Test Speed: HIGH
 Temperature: 25.3DEG
 Operators: Jason
 Test Date: 2021-04-23

γ Range: 0 - 90DEG
 γ Interval: 1.0DEG
 Test System: EVERFINE GO-2000B_V1 SYSTEM V2.0.362
 Humidity: 58%
 Test Distance: 8.967m [K=1.0000]
 Remarks:

LUMINAIRE PHOTOMETRIC TEST REPORT

Test:U:220.4V I:0.0367A P:7.500W PF:0.9453 Freq:49.90Hz Lamp Flux:629.678x1 lm		
NAME: FL300-SL300-2S-8W-940-55	TYPE:Linear Light	SERIAL No.:
SPEC.:4000K	DIM.: L300mm*W31*H50mm	
MFR.: NEKO LIGHTING AG		

DATA OF LAMP		PHOTOMETRIC DATA Eff: 83.96 lm/W			
MODEL	CREE-4000K	I _{max} (cd)	732.4	S/MH(C0/180)	0.85
NOMINAL POWER(W)	10	LOR(%)	100.0	S/MH(C90/270)	0.87
RATED VOLTAGE(V)	220	TOTAL FLUX(lm)	629.68	η UP, DN(C0-180)	0.0,50.7
NOMINAL FLUX(lm)	629.678	CIE CLASS	DIRECT	η UP, DN(C180-360)	0.0,49.3
LAMPS INSIDE	1	η up(%)	0.0	CIBSE SHR NOM	0.75
TEST VOLTAGE(V)	220	η down(%)	100.0	CIBSE SHR MAX	0.90



C Range: 0 - 360DEG
 C Interval: 15.0DEG
 Test Speed: HIGH
 Temperature:25.3DEG
 Operators:Jason
 Test Date:2021-04-23

γ Range: 0 - 90DEG
 γ Interval: 1.0DEG
 Test System:EVERFINE GO-2000B_V1 SYSTEM V2.0.362
 Humidity:58%
 Test Distance:8.967m [K=1.0000]
 Remarks:

ZONAL FLUX DIAGRAM

ZONAL FLUX DIAGRAM:

γ	C0	C45	C90	C135	C180	C225	C270	C315	γ	Φ zone	Φ total	%lum,lamp
10	730.6	718.8	689.0	650.2	628.3	640.2	673.1	708.6	0- 10	66.21	66.21	10.5,10.5
20	632.1	619.3	582.6	533.0	507.5	524.0	558.2	600.4	10- 20	178.2	244.4	38.8,38.8
30	365.3	361.2	343.9	318.9	306.7	315.3	329.7	351.8	20- 30	210.7	455.1	72.3,72.3
40	113.5	114.2	115.6	113.4	111.8	112.1	112.5	113.9	30- 40	129.7	584.8	92.9,92.9
50	8.708	8.913	9.076	8.718	8.608	8.665	8.301	8.836	40- 50	41.01	625.8	99.4,99.4
60	1.047	1.087	1.219	1.151	1.025	1.076	1.049	1.099	50- 60	3.317	629.1	99.9,99.9
70	0.1923	0.1405	0.2098	0.1625	0.1711	0.2242	0.1518	0.1943	60- 70	0.3979	629.5	100,100
80	0.0779	0.0208	0.0735	0.0366	0.0311	0.0783	0.0261	0.0735	70- 80	0.1119	629.6	100,100
90	0.0260	0.0156	0.0210	0.0210	0.0260	0.0261	0.0105	0.0210	80- 90	0.0377	629.7	100,100
100									90-100			
110									100-110			
120									110-120			
130									120-130			
140									130-140			
150									140-150			
160									150-160			
170									160-170			
180									170-180			
DEG	LUMINOUS INTENSITY:cd									UNIT:lm		

Conical surface Flux(90deg): 615.64 lm

%lum = 97.8%

%lamp = 97.8%

Conical surface Flux(120deg): 629.13 lm

%lum = 99.9%

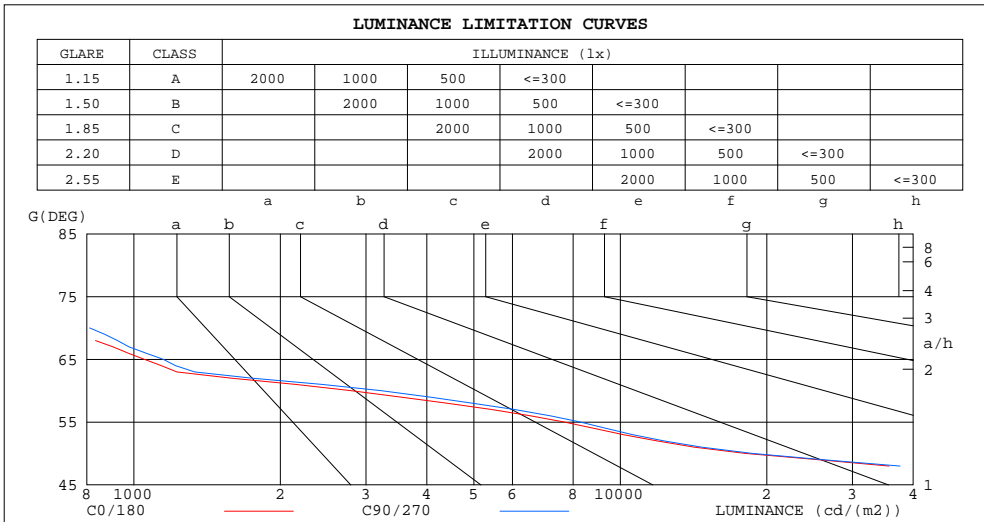
%lamp = 99.9%

C Range: 0 - 360DEG
C Interval: 15.0DEG
Test Speed: HIGH
Temperature:25.3DEG
Operators:Jason
Test Date:2021-04-23

γ Range: 0 - 90DEG
γ Interval: 1.0DEG
Test System:EVERFINE GO-2000B_V1 SYSTEM V2.0.362
Humidity:58%
Test Distance:8.967m [K=1.0000]
Remarks:

LUMINANCE LIMITATION CURVES

Test:U:220.4V I:0.0367A P:7.500W PF:0.9453 Freq:49.90Hz Lamp Flux:629.678x1 lm		
NAME: FL300-SL300-2S-8W-940-55	TYPE:Linear Light	SERIAL No.:
SPEC.:4000K	DIM.: L300mm*W31*H50mm	
MFR.: NEKO LIGHTING AG		



LUMINANCE cd/(m2)		
G(DEG)	C0/180	C90/270
85	639	795
80	598	560
75	616	643
70	750	811
65	1051	1149
60	2794	3224
55	7674	8277
50	18080	18672
45	99925	103221

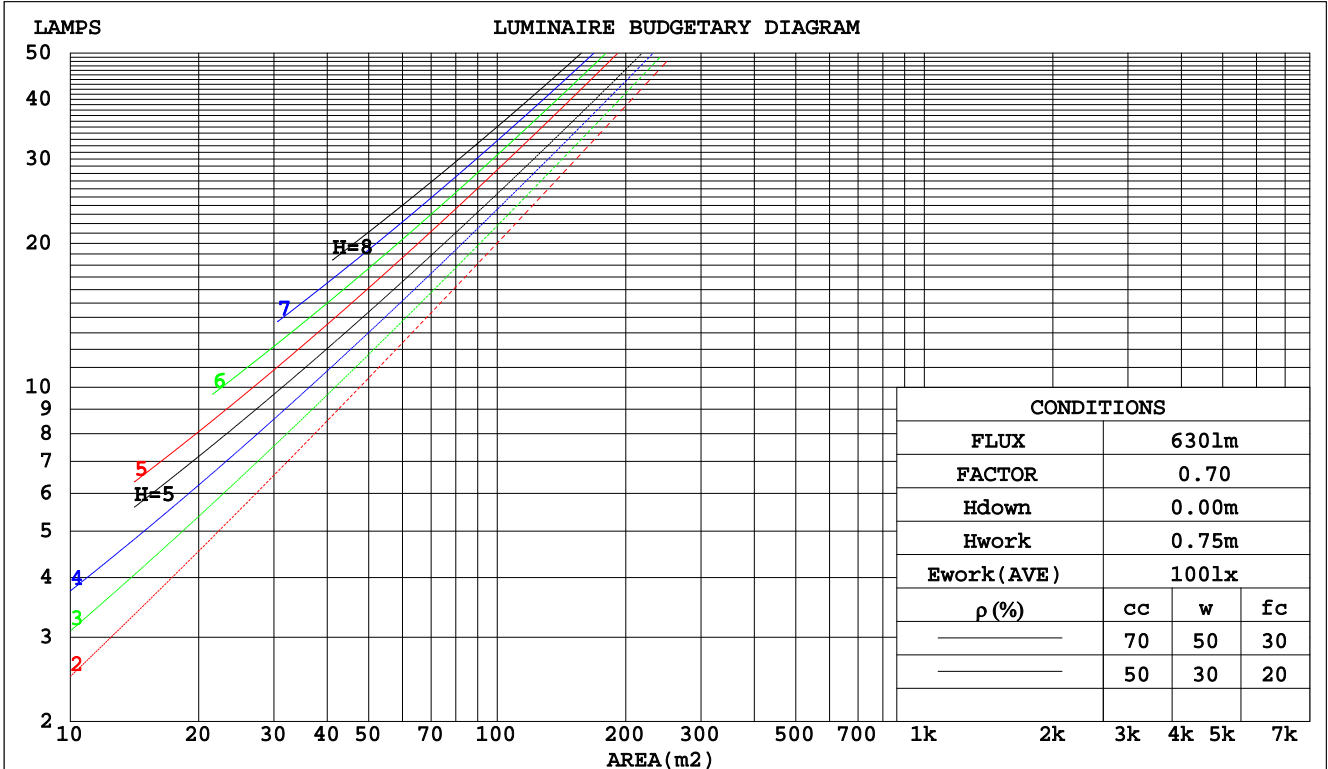
C Range: 0 - 360DEG
 C Interval: 15.0DEG
 Test Speed: HIGH
 Temperature:25.3DEG
 Operators:Jason
 Test Date:2021-04-23

γ Range: 0 - 90DEG
 γ Interval: 1.0DEG
 Test System:EVERFINE GO-2000B_V1 SYSTEM V2.0.362
 Humidity:58%
 Test Distance:8.967m [K=1.0000]
 Remarks:

CU AND LUMINAIRE BUDGETARY ESTIMATE DIAGRAM

Test:U:220.4V I:0.0367A P:7.500W PF:0.9453 Freq:49.90Hz Lamp Flux:629.678x1 lm		
NAME: FL300-SL300-2S-8W-940-55	TYPE:Linear Light	SERIAL No.:
SPEC.:4000K	DIM.: L300mm*W31*H50mm	
MFR.: NEKO LIGHTING AG		

pcc	80%			70%			50%			30%			10%			0
	50%	30%	10%	50%	30%	10%	50%	30%	10%	50%	30%	10%	50%	30%	10%	0
pw																0
pfc	20%			20%			20%			20%			20%			0
RCR	RCR:Room Cavity Ratio Coefficients of Utilization(CU)															
0.0	1.19	1.19	1.19	1.16	1.16	1.16	1.11	1.11	1.11	1.06	1.06	1.06	1.02	1.02	1.02	.00
1.0	1.11	1.08	1.06	1.09	1.07	1.05	1.05	1.03	1.01	1.01	.00	.98	.98	.96	.95	.94
2.0	1.03	.99	.96	1.02	.98	.95	.98	.95	.93	.95	.93	.91	.93	.91	.89	.87
3.0	.96	.91	.88	.95	.91	.87	.92	.89	.85	.90	.87	.84	.88	.85	.83	.81
4.0	.90	.85	.81	.89	.84	.80	.87	.83	.79	.85	.81	.78	.83	.80	.77	.76
5.0	.84	.79	.74	.83	.78	.74	.82	.77	.73	.80	.76	.73	.79	.75	.72	.71
6.0	.79	.73	.69	.78	.73	.69	.77	.72	.68	.76	.71	.68	.74	.70	.67	.66
7.0	.75	.69	.64	.74	.68	.64	.73	.68	.64	.71	.67	.64	.70	.66	.63	.62
8.0	.70	.64	.60	.70	.64	.60	.69	.63	.60	.68	.63	.60	.67	.62	.59	.58
9.0	.66	.60	.57	.66	.60	.56	.65	.60	.56	.64	.59	.56	.63	.59	.56	.55
10.0	.63	.57	.53	.62	.57	.53	.61	.56	.53	.61	.56	.53	.60	.56	.53	.51



C Range: 0 - 360DEG
 C Interval: 15.0DEG
 Test Speed: HIGH
 Temperature: 25.3DEG
 Operators: Jason
 Test Date: 2021-04-23

γ Range: 0 - 90DEG
 γ Interval: 1.0DEG
 Test System: EVERFINE GO-2000B_V1 SYSTEM V2.0.362
 Humidity: 58%
 Test Distance: 8.967m [K=1.0000]
 Remarks:

WEC AND CCEC

Test:U:220.4V I:0.0367A P:7.500W PF:0.9453 Freq:49.90Hz Lamp Flux:629.678x1 lm		
NAME: FL300-SL300-2S-8W-940-55	TYPE:Linear Light	SERIAL No.:
SPEC.:4000K	DIM.: L300mm*W31*H50mm	
MFR.: NEKO LIGHTING AG		

ρcc	80%			70%			50%			30%			10%			0
ρw	50%	30%	10%	50%	30%	10%	50%	30%	10%	50%	30%	10%	50%	30%	10%	0
ρfc	20%			20%			20%			20%			20%			0
RCR	RCR:Room Cavity Ratio						Wall Exitance Coefficients(WEC)									
0.0																
1.0	.176	.100	.032	.169	.096	.031	.156	.090	.029	.145	.083	.027	.134	.078	.025	
2.0	.168	.092	.028	.163	.090	.028	.152	.085	.026	.142	.080	.025	.133	.075	.024	
3.0	.161	.086	.026	.156	.084	.025	.147	.080	.024	.139	.076	.023	.131	.072	.022	
4.0	.154	.080	.023	.149	.078	.023	.142	.075	.022	.134	.072	.022	.128	.069	.021	
5.0	.147	.075	.022	.143	.073	.021	.136	.071	.021	.130	.069	.020	.124	.066	.020	
6.0	.140	.070	.020	.137	.069	.020	.131	.067	.020	.125	.065	.019	.120	.063	.019	
7.0	.134	.066	.019	.131	.065	.019	.126	.064	.018	.121	.062	.018	.116	.061	.018	
8.0	.129	.063	.018	.126	.062	.018	.121	.061	.017	.117	.059	.017	.113	.058	.017	
9.0	.123	.060	.017	.121	.059	.017	.117	.058	.016	.113	.057	.016	.109	.055	.016	
10.0	.119	.057	.016	.117	.056	.016	.113	.055	.016	.109	.054	.015	.106	.053	.015	

ρcc	80%			70%			50%			30%			10%			0
ρw	50%	30%	10%	50%	30%	10%	50%	30%	10%	50%	30%	10%	50%	30%	10%	0
ρfc	20%			20%			20%			20%			20%			0
RCR	RCR:Room Cavity Ratio						Ceiling Cavity Exitance Coefficients(CCEC)									
0.0	.190	.190	.190	.163	.163	.163	.111	.111	.111	.064	.064	.064	.020	.020	.020	
1.0	.171	.157	.145	.146	.135	.125	.100	.093	.086	.058	.054	.050	.018	.017	.016	
2.0	.156	.133	.113	.133	.114	.098	.091	.079	.068	.053	.046	.040	.017	.015	.013	
3.0	.143	.114	.090	.123	.098	.078	.084	.068	.055	.049	.040	.032	.016	.013	.011	
4.0	.133	.099	.073	.114	.085	.063	.079	.060	.044	.045	.035	.026	.015	.011	.009	
5.0	.125	.087	.060	.107	.075	.052	.074	.053	.037	.043	.031	.022	.014	.010	.007	
6.0	.117	.078	.050	.101	.068	.043	.070	.047	.031	.040	.028	.018	.013	.009	.006	
7.0	.111	.070	.042	.096	.061	.037	.066	.043	.026	.038	.025	.015	.012	.008	.005	
8.0	.105	.064	.036	.091	.056	.031	.063	.039	.022	.037	.023	.013	.012	.008	.004	
9.0	.100	.059	.031	.087	.051	.027	.060	.036	.019	.035	.021	.012	.011	.007	.004	
10.0	.096	.055	.027	.083	.048	.024	.057	.033	.017	.033	.020	.010	.011	.006	.003	

C Range: 0 - 360DEG
 C Interval: 15.0DEG
 Test Speed: HIGH
 Temperature:25.3DEG
 Operators:Jason
 Test Date:2021-04-23

γ Range: 0 - 90DEG
 γ Interval: 1.0DEG
 Test System:EVERFINE GO-2000B_V1 SYSTEM V2.0.362
 Humidity:58%
 Test Distance:8.967m [K=1.0000]
 Remarks:

UGR(Unified Glare Rating) Table

Test:U:220.4V I:0.0367A P:7.500W PF:0.9453 Freq:49.90Hz Lamp Flux:629.678x1 lm		
NAME: FL300-SL300-2S-8W-940-55	TYPE:Linear Light	SERIAL No.:
SPEC.:4000K	DIM.: L300mm*W31*H50mm	
MFR.: NEKO LIGHTING AG		

ceiling/cavity	0.7	0.7	0.5	0.5	0.3	0.7	0.7	0.5	0.5	0.3
walls	0.5	0.3	0.5	0.3	0.3	0.5	0.3	0.5	0.3	0.3
working plane	0.2	0.2	0.2	0.2	0.2	0.2	0.2	0.2	0.2	0.2
Room dimensions	Viewed crosswise					Viewed endwise				
x = 2H y = 2H	25.9	26.8	26.1	27.0	27.2	25.8	26.7	26.0	26.9	27.0
3H	25.7	26.6	26.0	26.8	27.0	25.6	26.5	25.8	26.7	26.9
4H	25.6	26.4	25.9	26.7	26.9	25.5	26.3	25.8	26.5	26.8
6H	25.5	26.3	25.8	26.5	26.8	25.4	26.2	25.7	26.4	26.7
8H	25.5	26.2	25.8	26.5	26.7	25.4	26.1	25.7	26.4	26.6
12H	25.4	26.1	25.8	26.4	26.7	25.3	26.0	25.6	26.3	26.6
4H 2H	25.6	26.4	25.9	26.7	26.9	25.5	26.3	25.8	26.5	26.8
3H	25.4	26.1	25.8	26.4	26.7	25.3	26.0	25.6	26.3	26.6
4H	25.3	26.0	25.7	26.3	26.6	25.2	25.9	25.6	26.2	26.5
6H	25.3	25.8	25.6	26.1	26.5	25.1	25.7	25.5	26.0	26.4
8H	25.2	25.7	25.6	26.1	26.4	25.1	25.6	25.5	25.9	26.3
12H	25.2	25.6	25.6	26.0	26.4	25.0	25.5	25.4	25.9	26.3
8H 4H	25.2	25.7	25.6	26.1	26.4	25.1	25.6	25.5	25.9	26.3
6H	25.1	25.5	25.5	25.9	26.3	25.0	25.4	25.4	25.8	26.2
8H	25.0	25.4	25.5	25.8	26.3	24.9	25.3	25.4	25.7	26.2
12H	25.0	25.3	25.5	25.8	26.2	24.9	25.2	25.3	25.6	26.1
12H 4H	25.2	25.6	25.6	26.0	26.4	25.0	25.5	25.4	25.9	26.3
6H	25.0	25.4	25.5	25.8	26.3	24.9	25.3	25.4	25.7	26.2
8H	25.0	25.3	25.5	25.8	26.2	24.9	25.2	25.3	25.6	26.1
Variations with the observer position at spacings:										
S = 1.0H	+ 3.1 / -19.6					+ 3.1 / -18.9				
1.5H	+ 5.4 / -15.7					+ 5.3 / -15.6				
2.0H	+ 8.6 / -19.4					+ 8.6 / -19.3				

CIE Pub.117, 629.7 lm Total Lamp Luminous Flux Correct (8log(F/F0) = -1.6)

C Range: 0 - 360DEG
 C Interval: 15.0DEG
 Test Speed: HIGH
 Temperature:25.3DEG
 Operators:Jason
 Test Date:2021-04-23

γ Range: 0 - 90DEG
 γ Interval: 1.0DEG
 Test System:EVERFINE GO-2000B_V1 SYSTEM V2.0.362
 Humidity:58%
 Test Distance:8.967m [K=1.0000]
 Remarks:

UTILIZATION FACTORS TABLE

Test:U:220.4V I:0.0367A P:7.500W PF:0.9453 Freq:49.90Hz Lamp Flux:629.678x1 lm		
NAME: FL300-SL300-2S-8W-940-55	TYPE:Linear Light	SERIAL No.:
SPEC.:4000K	DIM.: L300mm*W31*H50mm	
MFR.: NEKO LIGHTING AG		

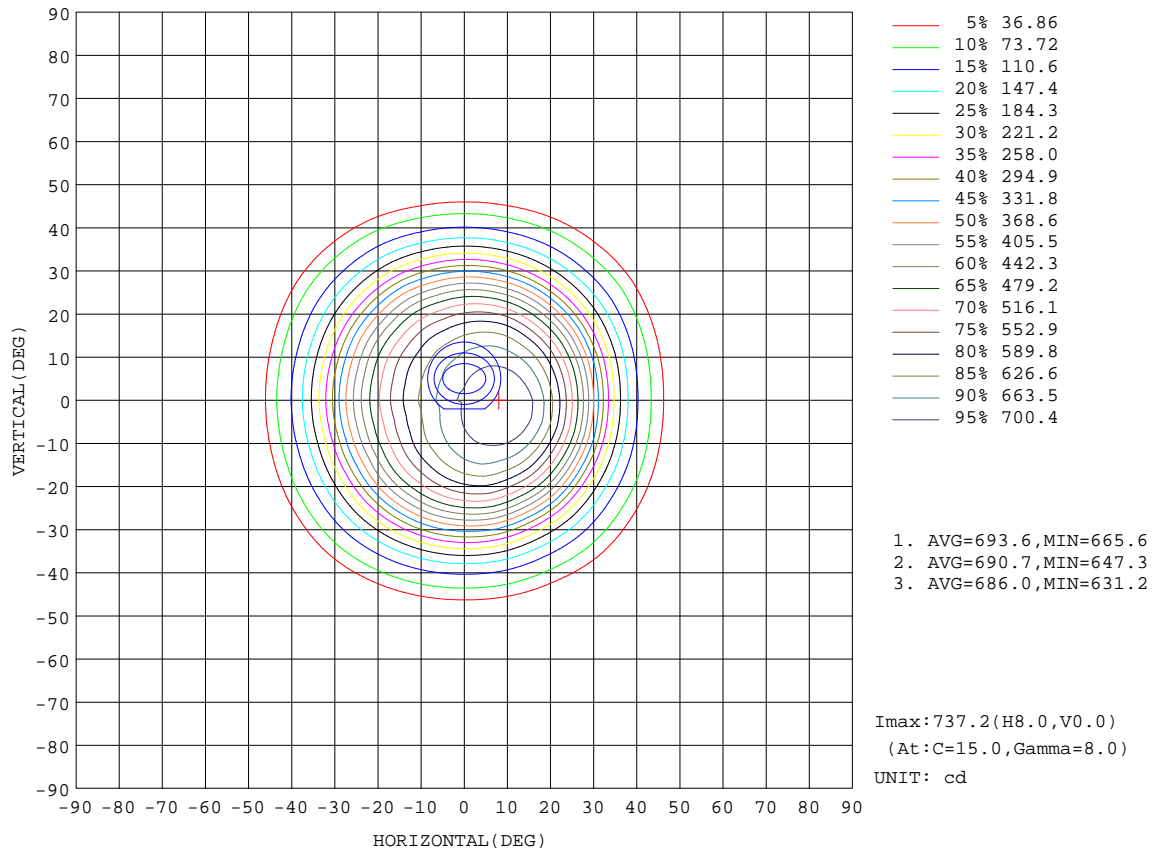
REFLECTANCE										
Ceiling	0.8	0.8	0.8	0.7	0.7	0.7	0.5	0.5	0.5	0
Walls	0.7	0.5	0.3	0.7	0.5	0.3	0.7	0.5	0.3	0
Working plane	0.2	0.2	0.2	0.2	0.2	0.2	0.2	0.2	0.2	0
ROOM INDEX	UTILIZATION FACTORS(PERCENT) $k(RI) \times RCR = 5$									
k = 0.60	87	81	77	87	80	77	86	80	77	73
0.80	95	89	85	94	88	85	93	88	85	81
1.00	99	94	90	98	93	90	97	93	89	85
1.25	103	98	95	102	98	94	100	96	94	89
1.50	106	101	98	105	101	98	103	99	97	92
2.00	109	105	102	107	104	101	105	102	99	94
2.50	110	107	104	109	105	103	106	103	101	95
3.00	112	109	106	110	107	105	107	104	103	96
4.00	114	111	109	112	109	108	108	106	105	98
5.00	115	113	111	113	111	109	109	108	106	99
ROOM INDEX	UF(total)									Direct
According to DIN EN 13032-2 2004			Suspended				SHRNOM = 1.25			

C Range: 0 - 360DEG
 C Interval: 15.0DEG
 Test Speed: HIGH
 Temperature:25.3DEG
 Operators:Jason
 Test Date:2021-04-23

γ Range: 0 - 90DEG
 γ Interval: 1.0DEG
 Test System:EVERFINE GO-2000B_V1 SYSTEM V2.0.362
 Humidity:58%
 Test Distance:8.967m [K=1.0000]
 Remarks:

ISOCANDELA DIAGRAM

Test:U:220.4V I:0.0367A P:7.500W PF:0.9453 Freq:49.90Hz Lamp Flux:629.678x1 lm		
NAME: FL300-SL300-2S-8W-940-55	TYPE:Linear Light	SERIAL No.:
SPEC.:4000K	DIM.: L300mm*W31*H50mm	
MFR.: NEKO LIGHTING AG		



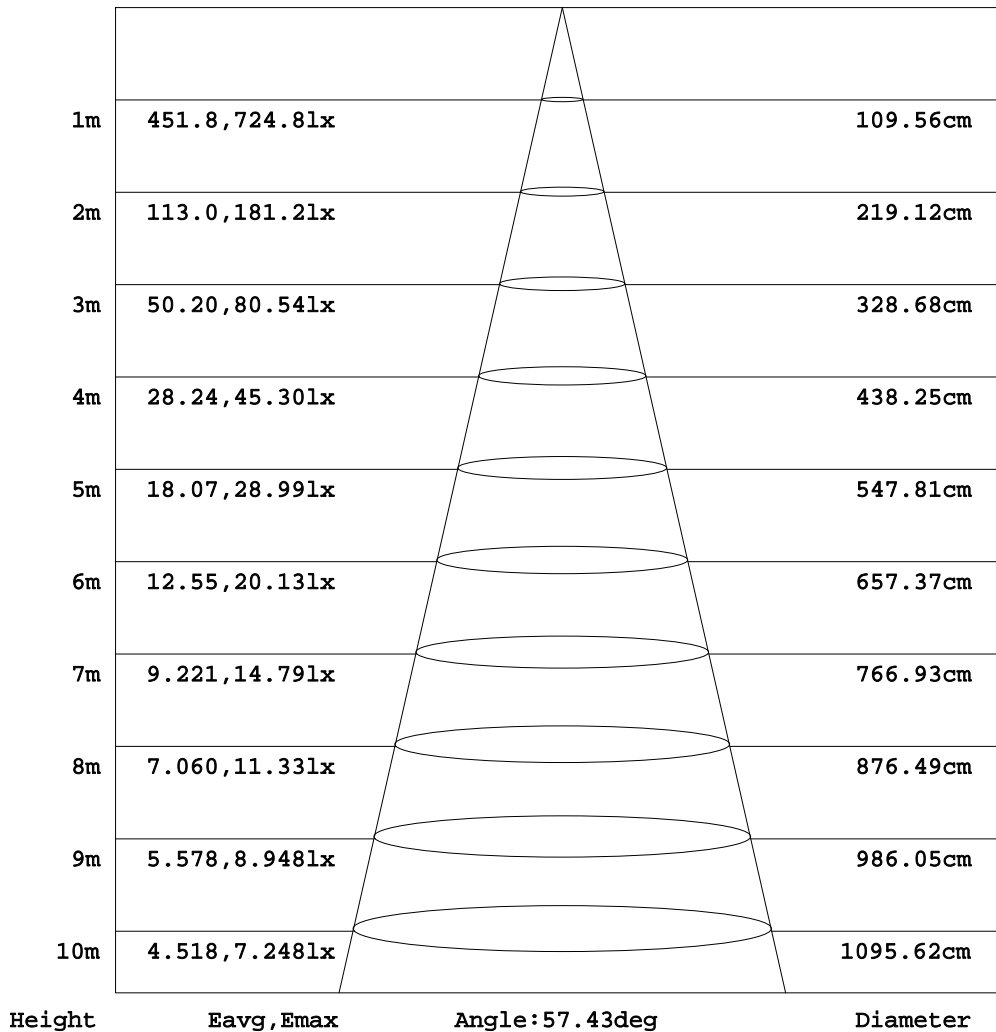
C Range: 0 - 360DEG
C Interval: 15.0DEG
Test Speed: HIGH
Temperature:25.3DEG
Operators:Jason
Test Date:2021-04-23

γ Range: 0 - 90DEG
γ Interval: 1.0DEG
Test System:EVERFINE GO-2000B_V1 SYSTEM V2.0.362
Humidity:58%
Test Distance:8.967m [K=1.0000]
Remarks:

AAI Figure

Test:U:220.4V I:0.0367A P:7.500W PF:0.9453 Freq:49.90Hz Lamp Flux:629.678x1 lm		
NAME: FL300-SL300-2S-8W-940-55	TYPE:Linear Light	SERIAL No.:
SPEC.:4000K	DIM.: L300mm*W31*H50mm	
MFR.: NEKO LIGHTING AG		

Flux out:436.2 lm



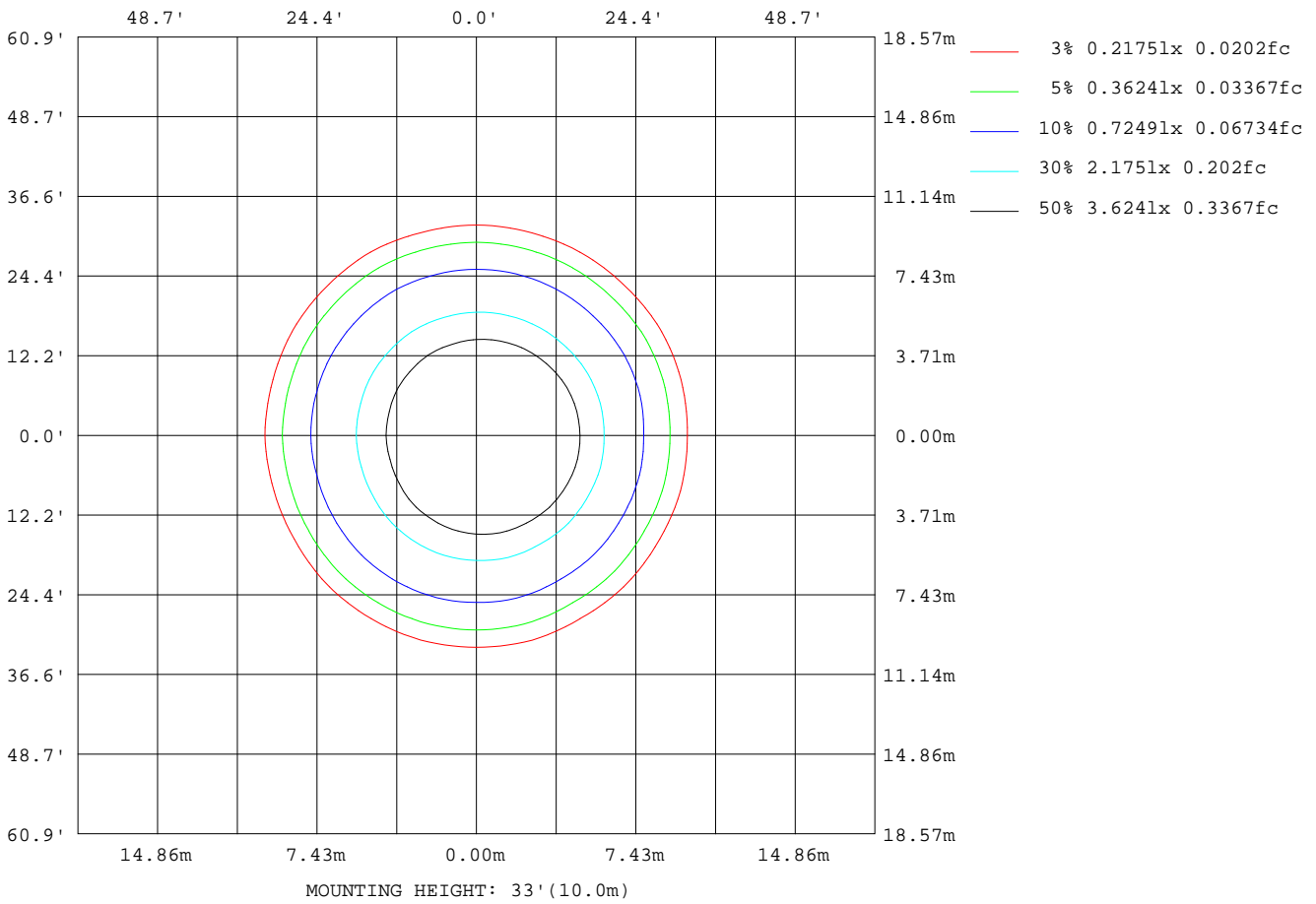
Note:The Curves indicate the illuminated area and the average illumination when the luminaire is at different distance.

C Range: 0 - 360DEG
C Interval: 15.0DEG
Test Speed: HIGH
Temperature:25.3DEG
Operators:Jason
Test Date:2021-04-23

γ Range: 0 - 90DEG
γ Interval: 1.0DEG
Test System:EVERFINE GO-2000B_V1 SYSTEM V2.0.362
Humidity:58%
Test Distance:8.967m [K=1.0000]
Remarks:

ISOLUX DIAGRAM

Test:U:220.4V I:0.0367A P:7.500W PF:0.9453 Freq:49.90Hz Lamp Flux:629.678x1 lm		
NAME: FL300-SL300-2S-8W-940-55	TYPE:Linear Light	SERIAL No.:
SPEC.:4000K	DIM.: L300mm*W31*H50mm	
MFR.: NEKO LIGHTING AG		



C Range: 0 - 360DEG
 C Interval: 15.0DEG
 Test Speed: HIGH
 Temperature:25.3DEG
 Operators:Jason
 Test Date:2021-04-23

γ Range: 0 - 90DEG
 γ Interval: 1.0DEG
 Test System:EVERFINE GO-2000B_V1 SYSTEM V2.0.362
 Humidity:58%
 Test Distance:8.967m [K=1.0000]
 Remarks:

LED Avg.L Report

Test:U:220.4V I:0.0367A P:7.500W PF:0.9453 Freq:49.90Hz Lamp Flux:629.678x1 lm		
NAME: FL300-SL300-2S-8W-940-55	TYPE:Linear Light	SERIAL No.:
SPEC.:4000K	DIM.: L300mm*W31*H50mm	
MFR.: NEKO LIGHTING AG		

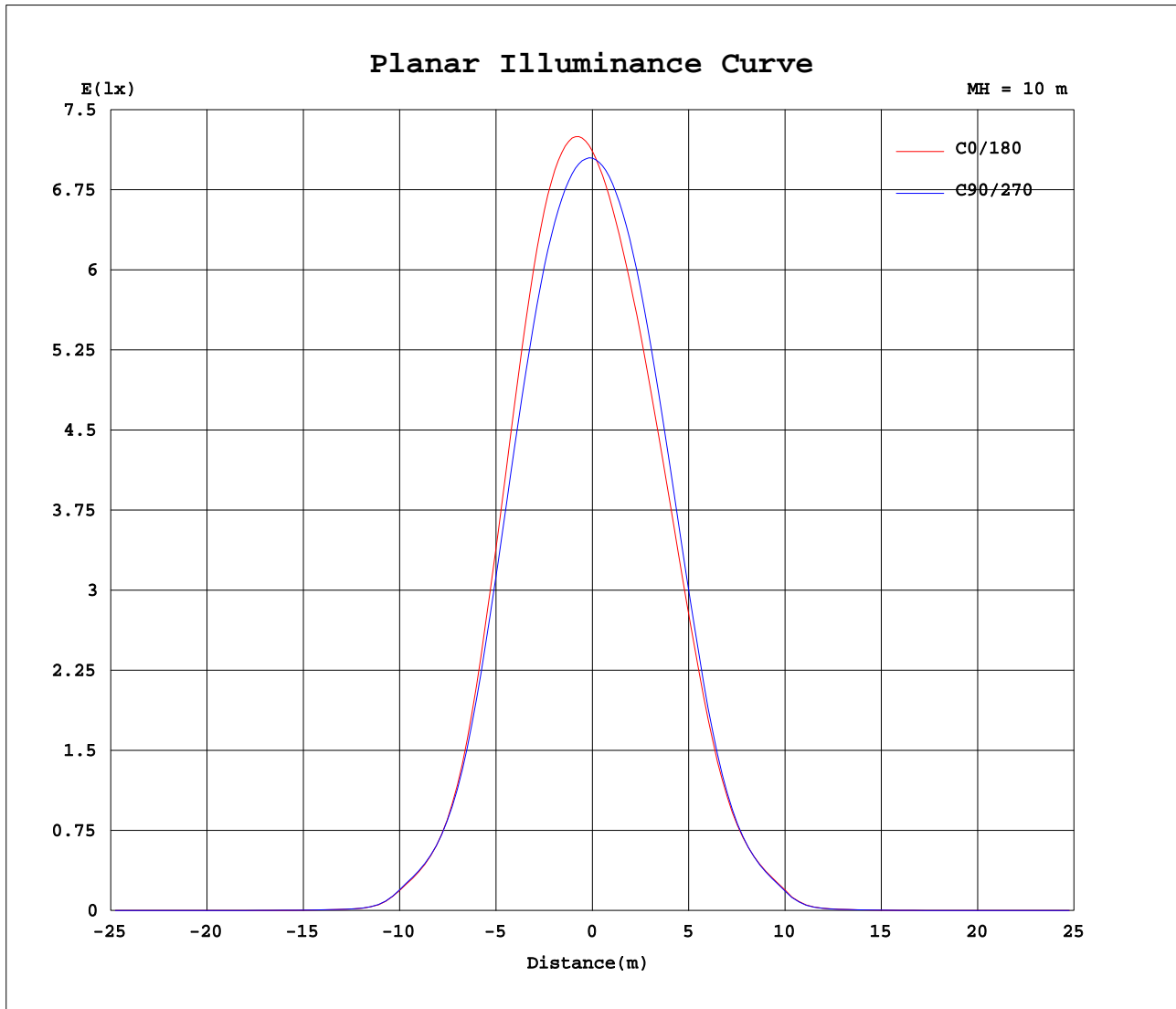
AvgL	cd/m2
L_0~180(65)av	1018
L_0~180(75)av	532
L_0~180(85)av	515
L_90~270(65)av	1027
L_90~270(75)av	510
L_90~270(85)av	478
L_45(65)av	1017
L_45(75)av	502
L_45(85)av	498

Standard: GB/T 29293-2012

C Range: 0 - 360DEG
C Interval: 15.0DEG
Test Speed: HIGH
Temperature:25.3DEG
Operators:Jason
Test Date:2021-04-23

γ Range: 0 - 90DEG
γ Interval: 1.0DEG
Test System:EVERFINE GO-2000B_V1 SYSTEM V2.0.362
Humidity:58%
Test Distance:8.967m [K=1.0000]
Remarks:

Planar Illuminance Curve



C Range: 0 - 360DEG
 C Interval: 15.0DEG
 Test Speed: HIGH
 Temperature: 25.3DEG
 Operators: Jason
 Test Date: 2021-04-23

γ Range: 0 - 90DEG
 γ Interval: 1.0DEG
 Test System: EVERFINE GO-2000B_V1 SYSTEM V2.0.362
 Humidity: 58%
 Test Distance: 8.967m [K=1.0000]
 Remarks:

LUMINOUS DISTRIBUTION INTENSITY DATA

Test:U:220.4V I:0.0367A P:7.500W PF:0.9453 Freq:49.90Hz Lamp Flux:629.678x1 lm		
NAME: FL300-SL300-2S-8W-940-55	TYPE:Linear Light	SERIAL No.:
SPEC.:4000K	DIM.: L300mm*W31*H50mm	
MFR.: NEKO LIGHTING AG		

Table--1

UNIT: cd

C(DEC)	0	15	30	45	60	75	90	105	120	135	150	165	180	195	210	225	240	255	270
0	706	706	706	706	706	706	706	706	706	706	706	706	706	706	706	706	706	706	706
5	728	728	725	721	716	711	705	698	691	683	677	674	672	672	675	679	684	690	697
10	731	731	726	719	708	700	689	676	663	650	639	631	628	629	633	640	651	661	673
15	704	708	700	689	675	667	652	634	617	603	587	579	576	578	585	592	604	614	629
20	632	637	628	619	604	598	583	565	548	533	517	509	508	509	517	524	536	543	558
25	514	518	511	506	493	490	477	465	451	439	423	418	418	418	426	431	441	445	457
30	365	368	360	361	350	353	344	339	329	319	307	304	307	307	312	315	323	323	330
35	212	214	210	211	206	210	207	205	202	197	191	189	192	193	195	196	200	198	201
40	113	115	113	114	112	116	116	115	114	113	110	110	112	111	112	112	114	112	112
45	52.9	54.8	52.2	54.3	52.7	56.6	55.2	56.2	54.4	53.5	49.7	50.4	54.5	52.5	54.5	53.5	55.8	51.5	51.9
50	8.71	9.08	8.71	8.91	8.64	9.24	9.08	9.12	8.97	8.72	8.20	8.26	8.61	8.32	8.74	8.66	8.98	8.19	8.30
55	3.30	3.36	3.31	3.45	3.40	3.58	3.59	3.61	3.55	3.53	3.37	3.33	3.35	3.31	3.41	3.40	3.45	3.27	3.32
60	1.05	1.05	1.05	1.09	1.11	1.20	1.22	1.21	1.21	1.15	1.06	1.01	1.02	1.04	1.06	1.08	1.12	1.07	1.05
65	0.33	0.28	0.33	0.28	0.34	0.30	0.37	0.32	0.37	0.33	0.37	0.32	0.32	0.37	0.31	0.37	0.31	0.35	0.29
70	0.19	0.15	0.19	0.14	0.19	0.15	0.21	0.16	0.22	0.16	0.22	0.17	0.17	0.22	0.17	0.22	0.16	0.21	0.15
75	0.12	0.07	0.11	0.07	0.12	0.07	0.13	0.07	0.13	0.08	0.13	0.08	0.09	0.14	0.08	0.13	0.08	0.13	0.07
80	0.08	0.02	0.07	0.02	0.07	0.02	0.07	0.03	0.08	0.04	0.08	0.03	0.03	0.08	0.04	0.08	0.03	0.08	0.03
85	0.04	0.02	0.04	0.02	0.04	0.02	0.05	0.02	0.05	0.02	0.05	0.02	0.03	0.05	0.03	0.05	0.02	0.04	0.01
90	0.03	0.02	0.03	0.02	0.03	0.02	0.02	0.02	0.03	0.02	0.02	0.02	0.03	0.03	0.03	0.03	0.03	0.02	0.01

C Range: 0 - 360DEG
C Interval: 15.0DEG
Test Speed: HIGH
Temperature:25.3DEG
Operators:Jason
Test Date:2021-04-23

γ Range: 0 - 90DEG
γ Interval: 1.0DEG
Test System:EVERFINE GO-2000B_V1 SYSTEM V2.0.362
Humidity:58%
Test Distance:8.967m [K=1.0000]
Remarks:

LUMINOUS DISTRIBUTION INTENSITY DATA

Test:U:220.4V I:0.0367A P:7.500W PF:0.9453 Freq:49.90Hz Lamp Flux:629.678x1 lm		
NAME: FL300-SL300-2S-8W-940-55	TYPE:Linear Light	SERIAL No.:
SPEC.:4000K	DIM.: L300mm*W31*H50mm	
MFR.: NEKO LIGHTING AG		

Table--2

UNIT: cd

C(DEG) \ γ (DEG)	285	300	315	330	345														
0	706	706	706	706	706														
5	704	711	717	723	727														
10	685	698	709	720	727														
15	644	660	672	687	699														
20	573	590	600	617	628														
25	468	481	491	507	514														
30	336	345	352	365	370														
35	203	206	210	216	218														
40	112	114	114	118	117														
45	51.0	52.6	53.6	56.9	56.4														
50	8.22	8.50	8.84	9.64	9.40														
55	3.29	3.33	3.32	3.46	3.38														
60	1.06	1.08	1.10	1.11	1.09														
65	0.34	0.27	0.33	0.28	0.33														
70	0.20	0.15	0.19	0.14	0.19														
75	0.12	0.07	0.12	0.07	0.12														
80	0.08	0.02	0.07	0.02	0.07														
85	0.04	0.02	0.05	0.02	0.05														
90	0.02	0.02	0.02	0.02	0.03														

C Range: 0 - 360DEG
C Interval: 15.0DEG
Test Speed: HIGH
Temperature:25.3DEG
Operators:Jason
Test Date:2021-04-23

γ Range: 0 - 90DEG
γ Interval: 1.0DEG
Test System:EVERFINE GO-2000B_V1 SYSTEM V2.0.362
Humidity:58%
Test Distance:8.967m [K=1.0000]
Remarks: